

V&V Reference Report

L2 ASCDS Version : 8.4.5

Observation 3244 - L2 Version 3
Chandra X-Ray Center

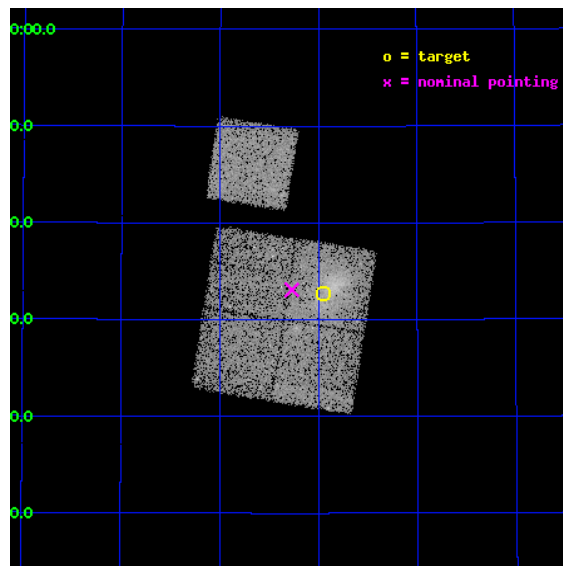
L2 Processing Date : Oct 16 2012

Contents

1	Front	2
2	OBI	3
2.1	OBI	3
2.1.1	Images	3
2.1.2	Bias	3
2.1.3	Parameters	4
2.1.4	Events	4
2.2	Compared Parameters	5
2.3	Aspect	6
2.4	Star Slots	9
2.4.1	Slot 3	9
2.4.2	Slot 4	10
2.4.3	Slot 5	11
2.4.4	Slot 6	12
2.4.5	Slot 7	13
2.5	FID Slots	14
2.5.1	Slot 0	14
2.5.2	Slot 1	15
2.5.3	Slot 2	16
A	Summary	17
A.1	Status	17
A.2	Comments	17

1 Front

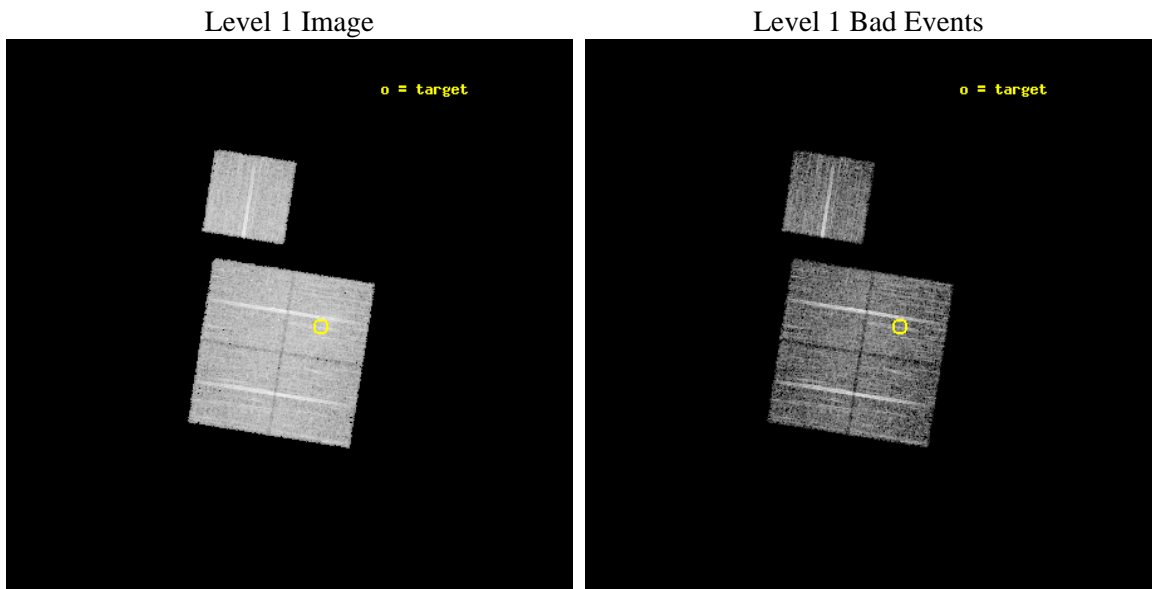
seq_num	800244	Sequence number
obs_id	3244	Observation id
title	OBSERVATION OF BCS CLUSTERS, SECOND SET	Proposal title
observer	DR. LEON VANSPEYBROECK	Principal investigator
object	A1682	Source name
dtcycle	0	
cycle	P	events from which exps? Prim/Second/Both
ra_targ	196.739167	Observer's specified target RA [deg]
dec_targ	46.545	Observer's specified target Dec [deg]
ra_nom	196.81755005844	Nominal RA [deg]
dec_nom	46.55153593602	Nominal Dec [deg]
roll_nom	9.0285371518688	Nominal Roll [deg]
revision	3	Processing version of data
ontime	9907.5999809206	Sum of GTIs [s]
livetime	9778.1498933008	Livetime [s]
ontime0	9907.5999809206	Sum of GTIs [s]
ontime1	9907.5999809206	Sum of GTIs [s]
ontime2	9907.5999809206	Sum of GTIs [s]
ontime3	9907.5999809206	Sum of GTIs [s]
ontime6	9907.5999809206	Sum of GTIs [s]
l2events	46295	Number of level 2 events



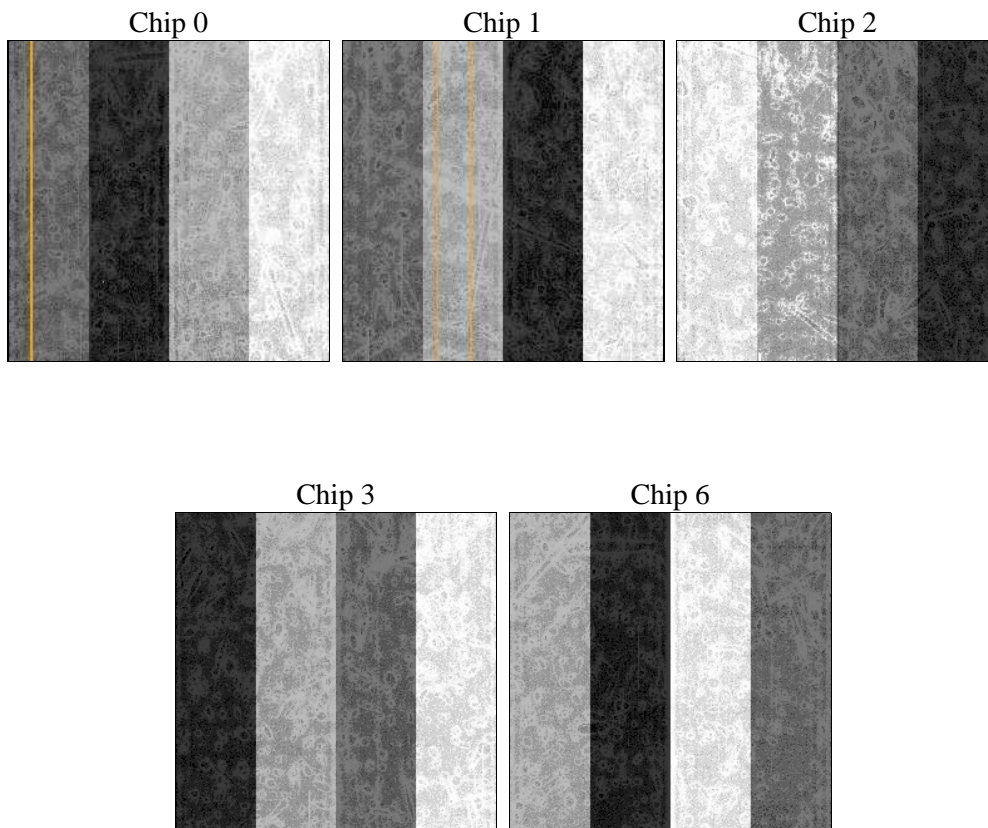
2 OBI

2.1 OBI

2.1.1 Images



2.1.2 Bias



2.1.3 Parameters

obi_num	0	Obi number	sched_exp_time	9789.338000	[s] Scheduled observation exposure time
ascdsver	8.4.5	Processing system revision	ontime	9907.5999809206	Sum of GTIs [s]
caldsver	4.5.2	 	ontime0	9907.5999809206	Sum of GTIs [s]
date	2012-10-16T23:41:22	Date and time of file creation	ontime1	9907.5999809206	Sum of GTIs [s]
revision	3	Processing version of data	ontime2	9907.5999809206	Sum of GTIs [s]
			ontime3	9907.5999809206	Sum of GTIs [s]
			ontime6	9907.5999809206	Sum of GTIs [s]
			l1events	277927	Number of level 1 events

2.1.4 Events

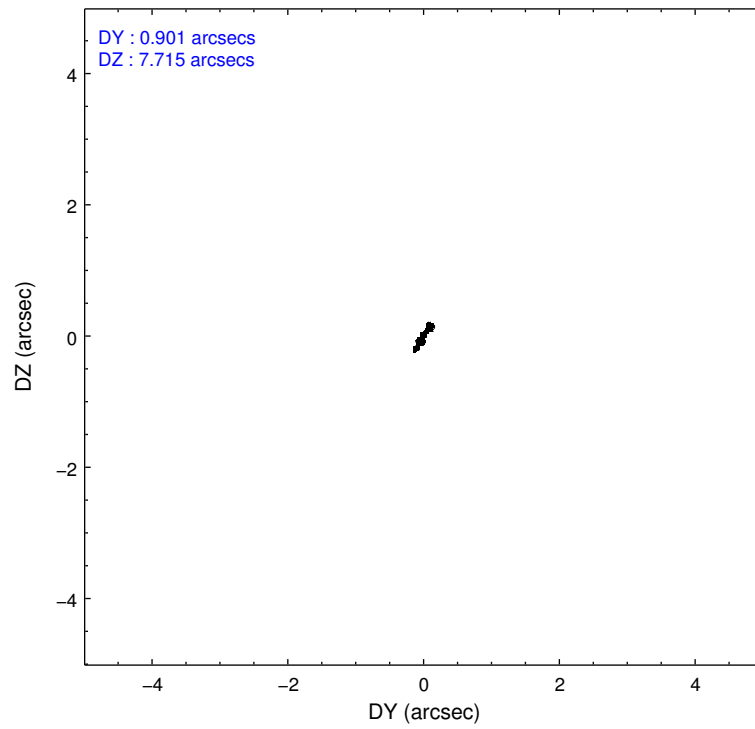
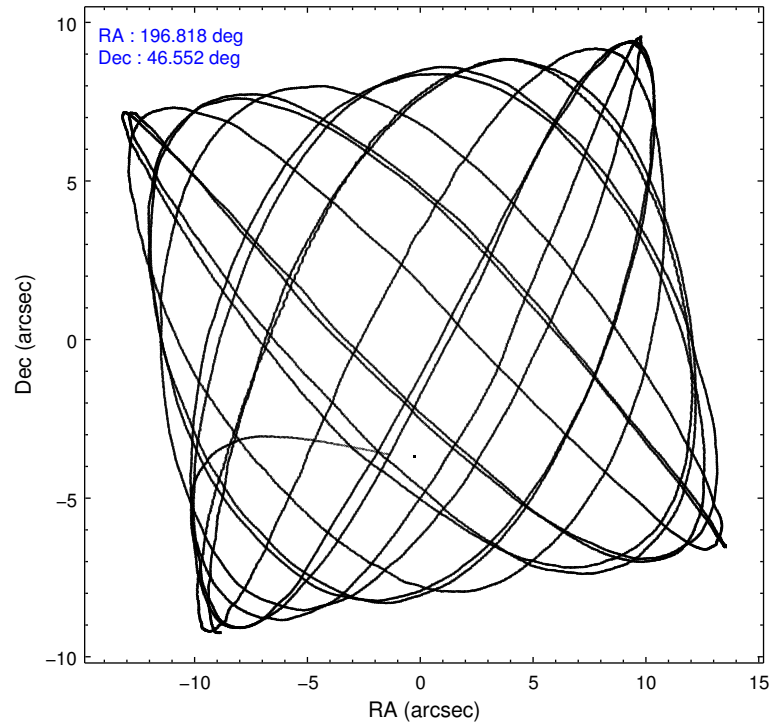
	ccd 0	ccd 1	ccd 2	ccd 3	ccd 6
level 1 events	51656	52370	55134	60813	57954
rejected events	43030	42355	46142	47678	46475
rejected %	83%	80%	83%	78%	80%

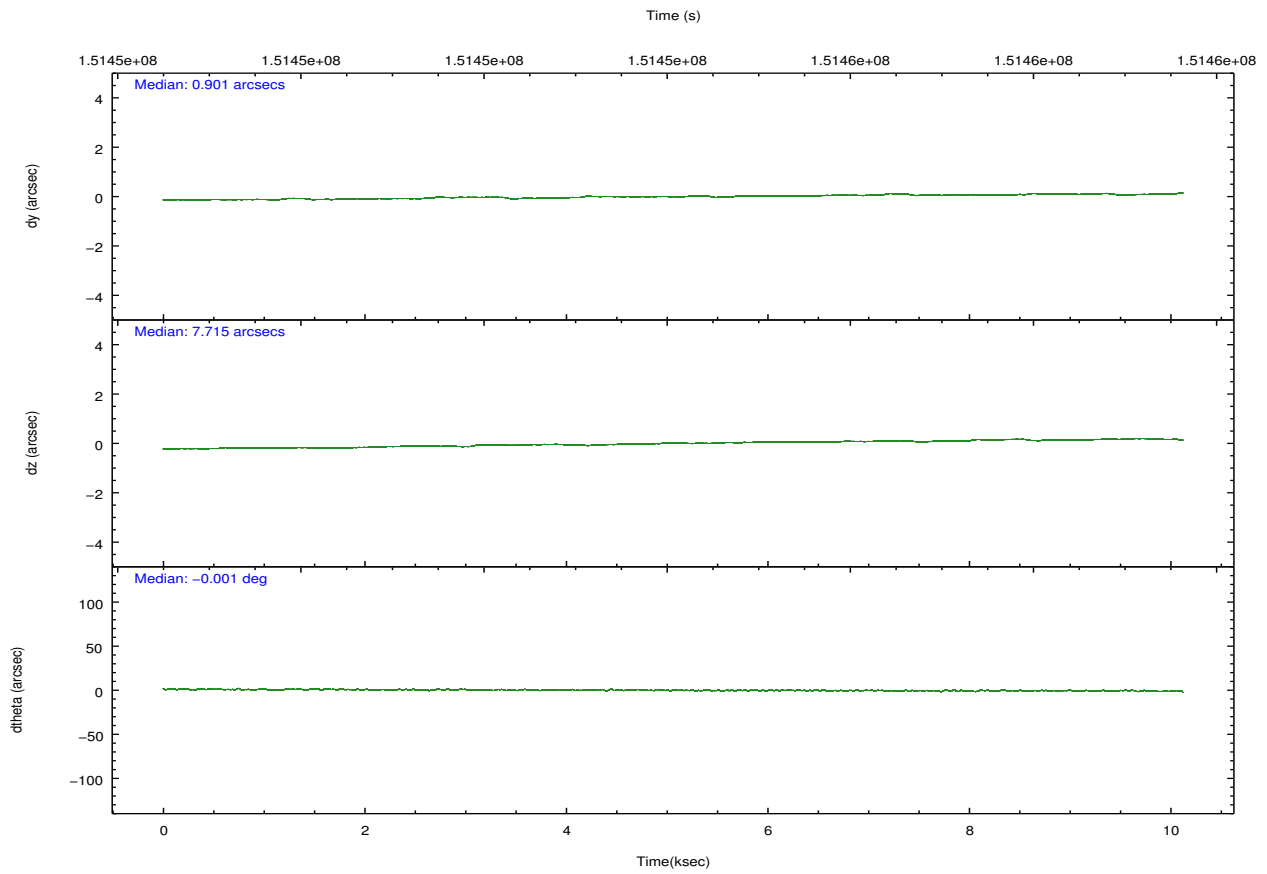
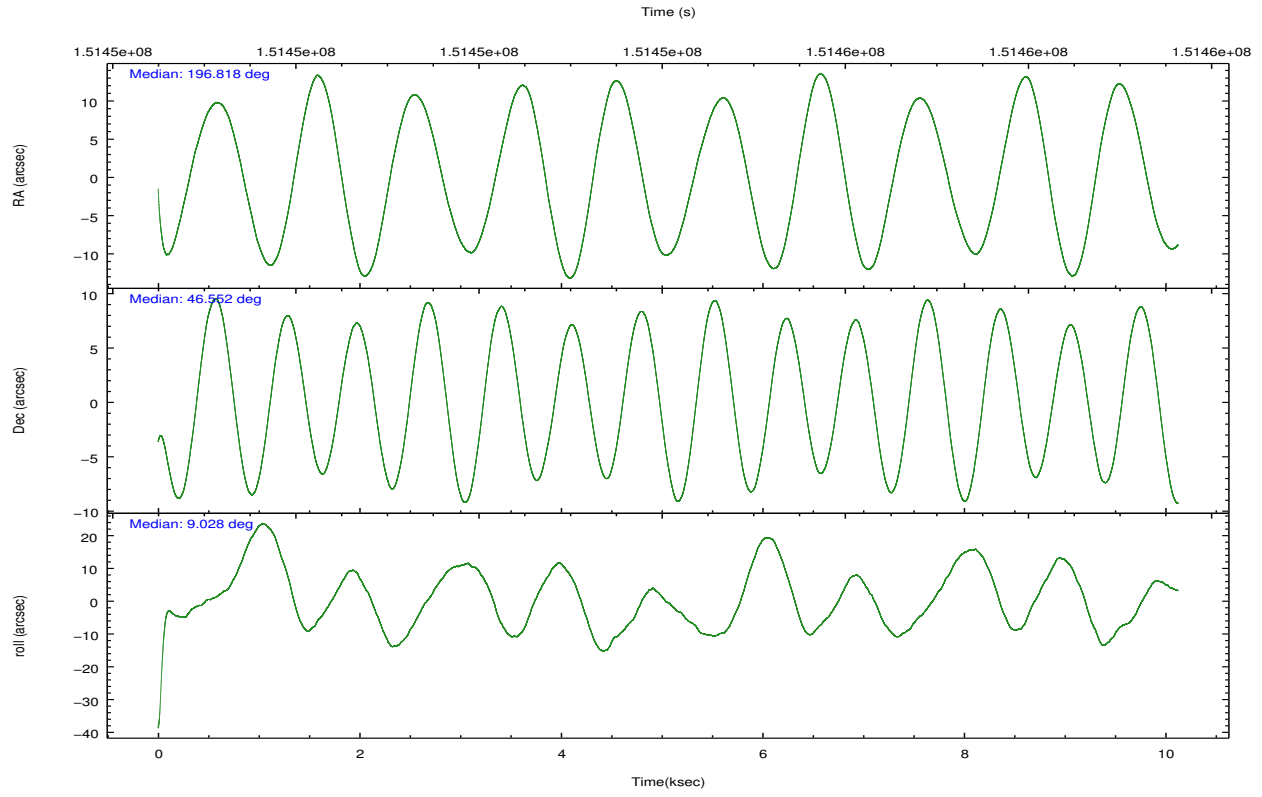
	ccd 0	ccd 1	ccd 2	ccd 3	ccd 6
grade 0 events	4708	5589	5089	8608	7028
	9%	10%	9%	14%	12%
grade 1 events	36	40	54	49	48
	0%	0%	0%	0%	0%
grade 2 events	1520	1613	1515	1879	1765
	2%	3%	2%	3%	3%
grade 3 events	700	764	707	800	723
	1%	1%	1%	1%	1%
grade 4 events	621	771	673	759	701
	1%	1%	1%	1%	1%
grade 5 events	1697	1804	1621	1981	1950
	3%	3%	2%	3%	3%
grade 6 events	1081	1281	1013	1097	1270
	2%	2%	1%	1%	2%
grade 7 events	41293	40508	44462	45640	44469
	79%	77%	80%	75%	76%

2.2 Compared Parameters

Parameter	Planned	Actual	Parameter	Planned	Actual
Instrument	ACIS	ACIS	Obspar format version number	7	7
Detector	ACIS-01236	ACIS-01236	Obspar file type	PREDICTED	ACTUAL
Grating	NONE	NONE	Obspar update status	NONE	UPDATED
Data mode	VFAINT	VFAINT	Number of optional ACIS chips dropped	0	0
Observation mode	POINTING	POINTING	On-chip summing requested	N	N
[deg] Pointing RA	196.786723	196.8175500584368	Subarray requested	NONE	NONE
[deg] Pointing Dec	46.534247	46.5515359360204	Alternating exposures requested	N	N
[deg] Pointing Roll	8.842268	9.028537151868772	[s] Primary exposure time	0.000000	3.1
[mm] SIM focus pos	-0.782348	-0.7809083437167272			
[mm] SIM defocus	0	0.001439871863259334			
[mm] SIM translation stage pos	-225.840463	-225.8433433320239			
[mm] SIM translation stage offset	-7.752	-7.749109670905796			
[s] Observation start time (MET)	151449338.184000	151448291.16659			
Observation start date	2002-10-19T21:14:34	2002-10-19T20:58:11			
[s] Observation end time (MET)	151459127.184000	151459442.14206			
Observation end date	2002-10-19T23:57:43	2002-10-20T00:04:02			
Read mode	TIMED	TIMED			

2.3 Aspect



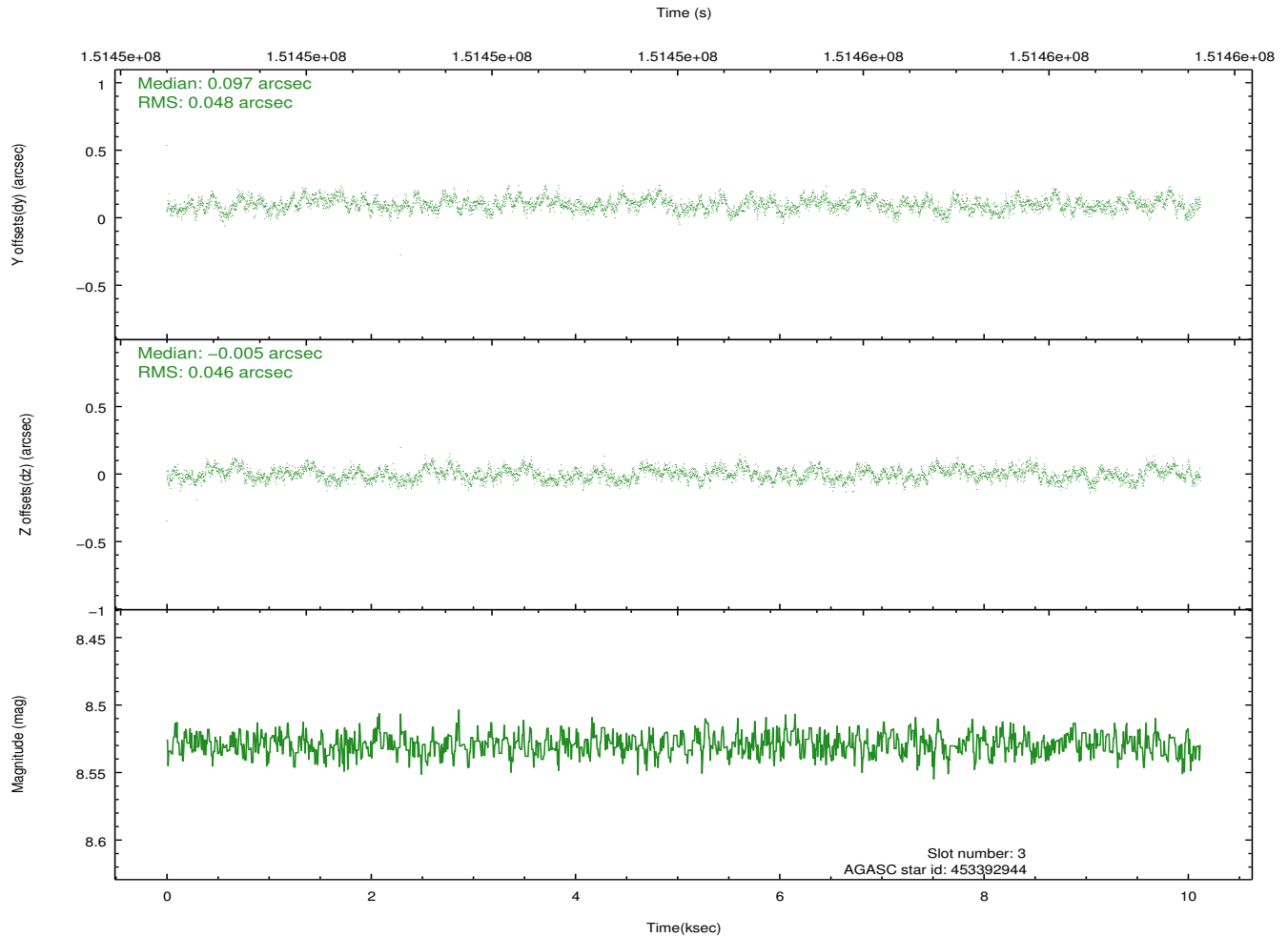
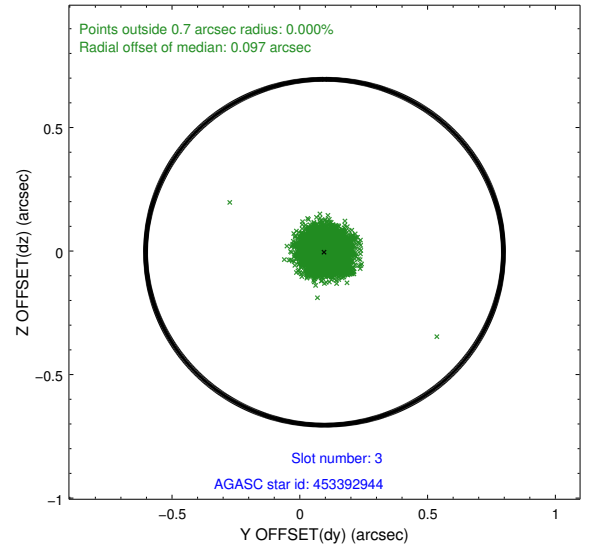
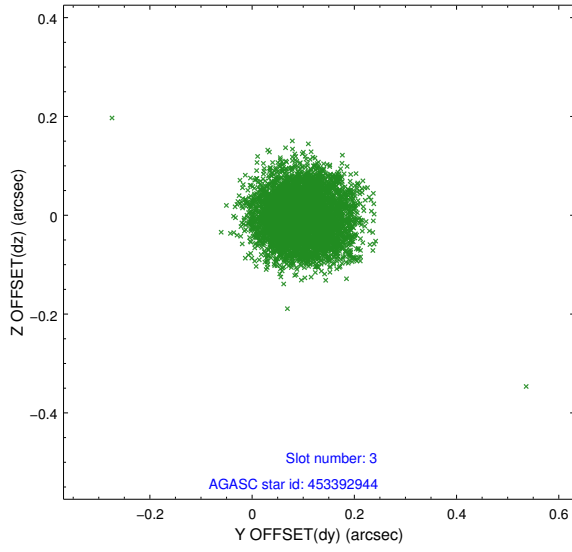


Slot Statistics

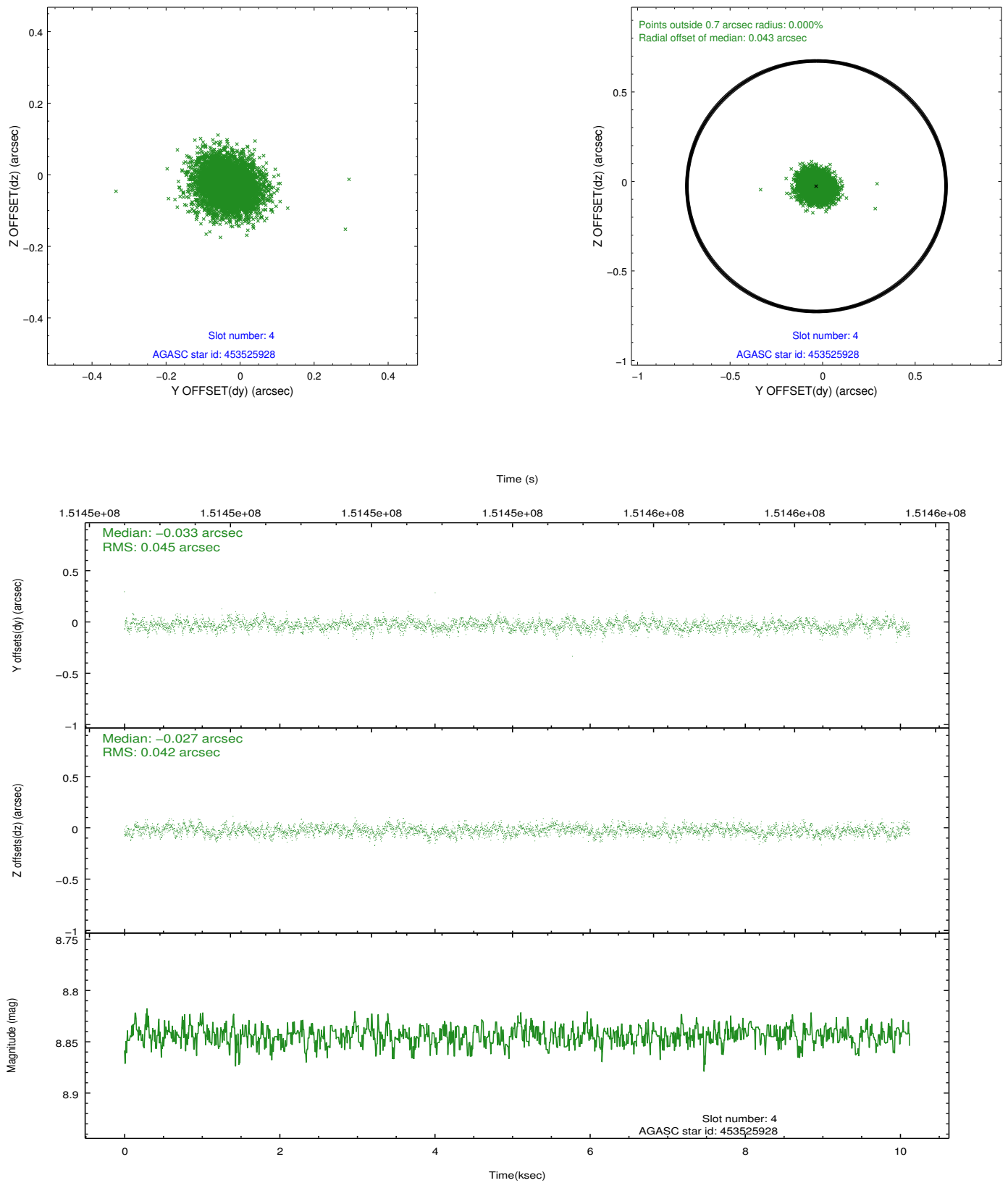
slot	status	id	mag	n_pts	med_dy	med_dz	dr1	dr2	ra	dec	mean_y	mean_z
0	FID	ACIS-I-1	7.22	2469	0.084	-0.028	0.009	0.015	0.000000	0.000000	938.88	-990.24
1	FID	ACIS-I-5	7.22	2469	-0.191	0.097	0.009	0.016	0.000000	0.000000	-1809.19	907.09
2	FID	ACIS-I-6	7.26	2469	0.015	0.001	0.006	0.011	0.000000	0.000000	403.82	1552.06
3	GUIDE	453392944	8.53	4939	0.097	-0.005	0.072	0.110	196.043621	46.459257	-1862.00	25.35
4	GUIDE	453525928	8.84	4936	-0.033	-0.027	0.065	0.104	197.234950	46.853493	1266.31	969.18
5	GUIDE	453395040	9.65	4918	0.102	0.119	0.099	0.162	196.255895	46.165420	-1511.70	-1103.81
6	GUIDE	453526760	7.34	4939	-0.300	-0.079	0.046	0.075	197.584634	47.041118	2214.77	1511.85
7	GUIDE	453389112	10.01	4935	0.134	-0.008	0.132	0.213	196.538814	46.948010	-373.14	1566.83

2.4 Star Slots

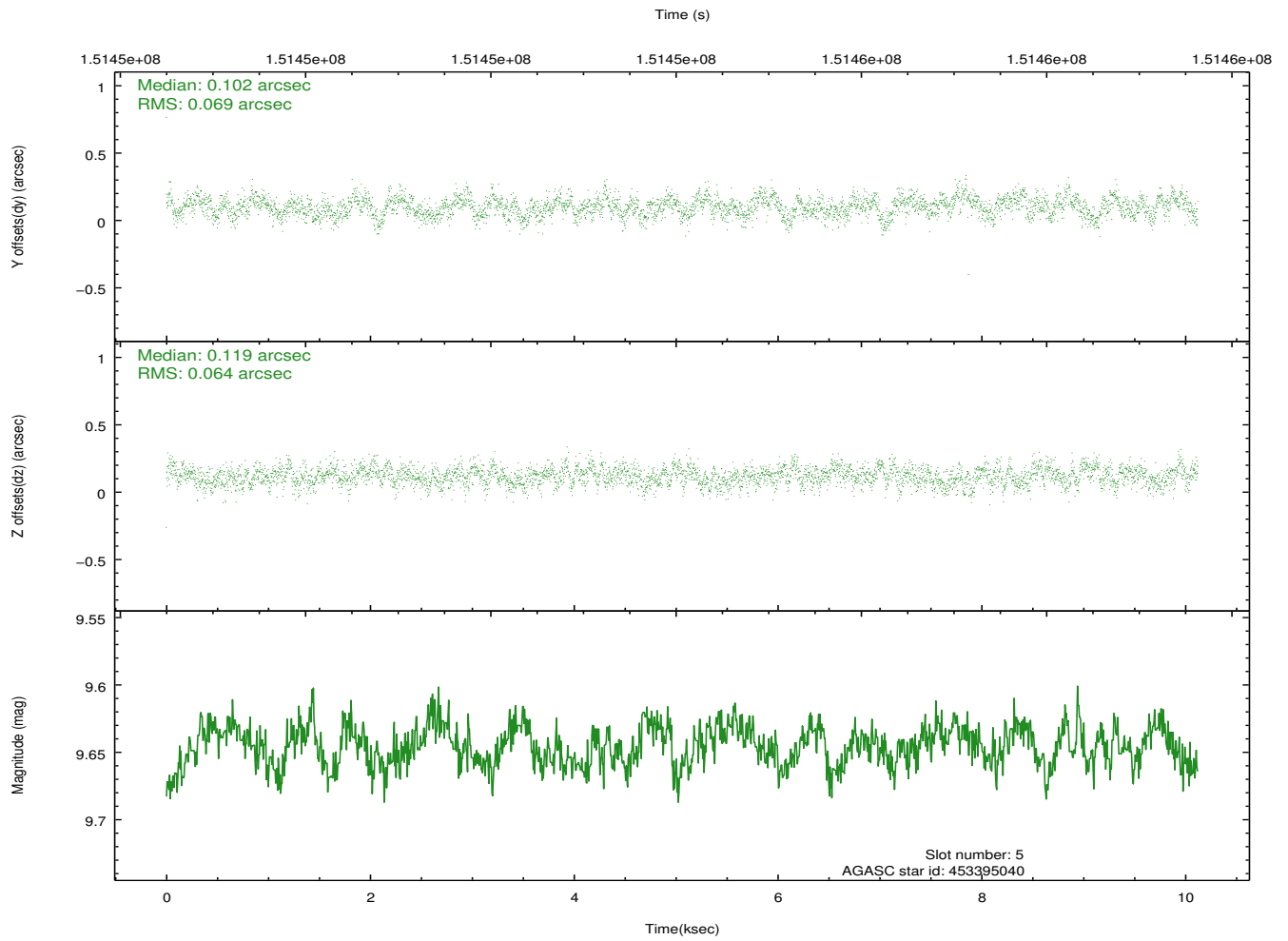
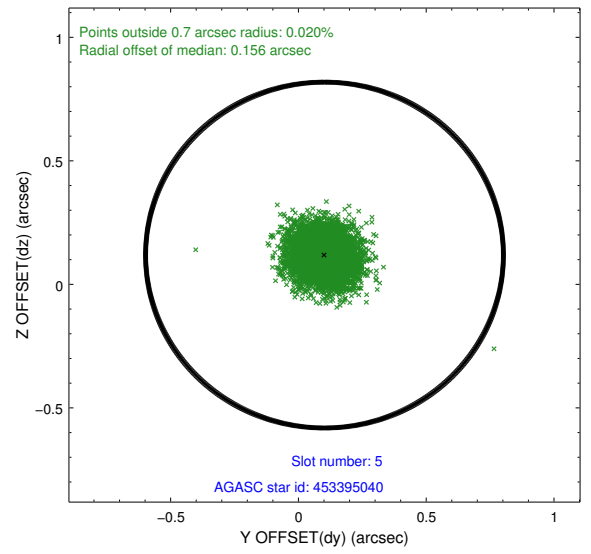
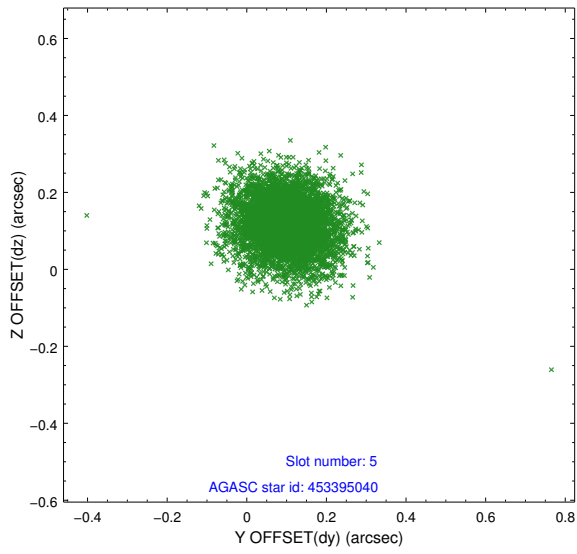
2.4.1 Slot 3



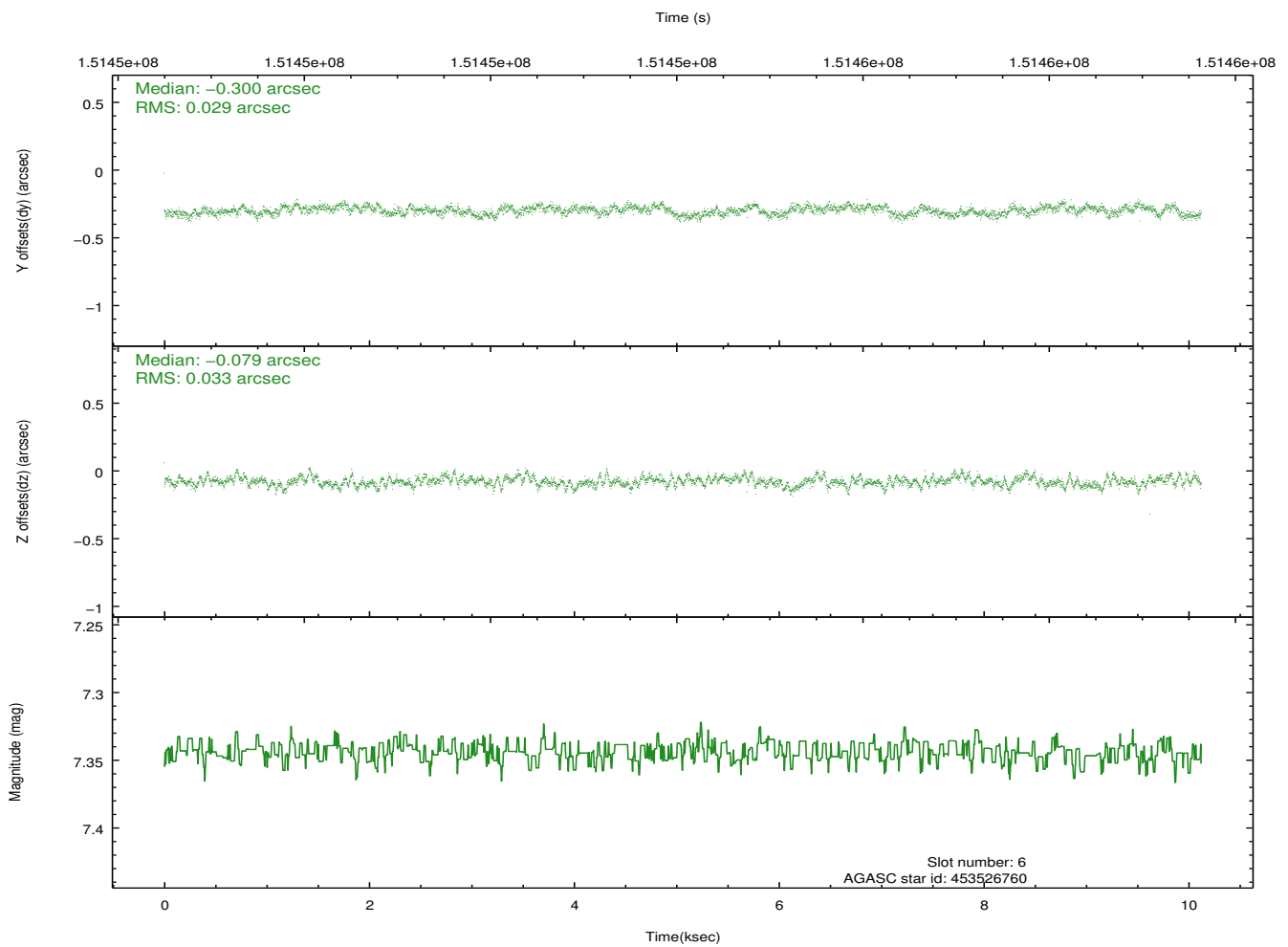
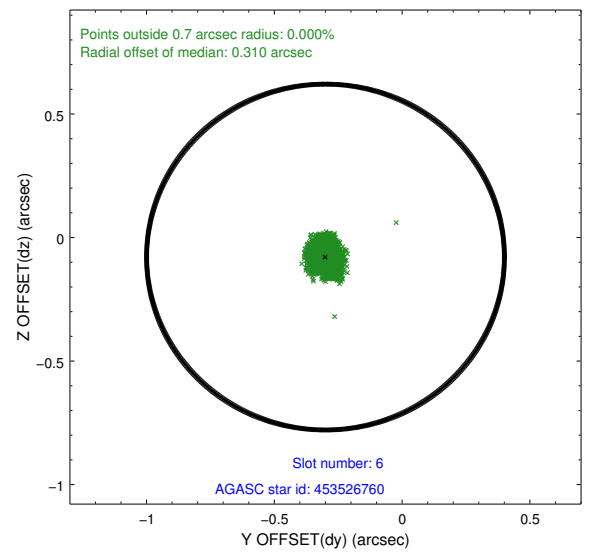
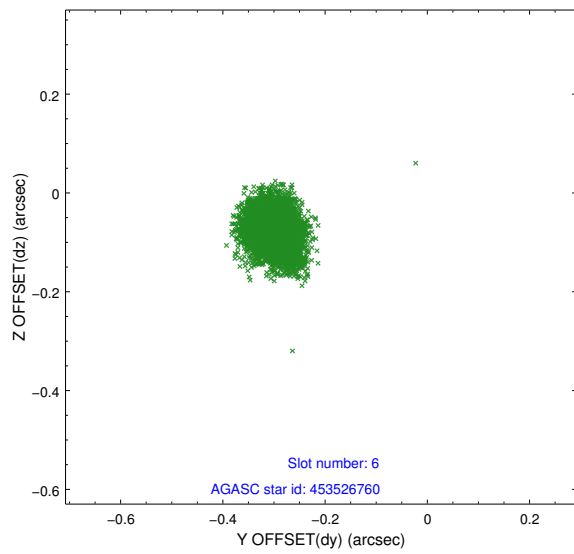
2.4.2 Slot 4



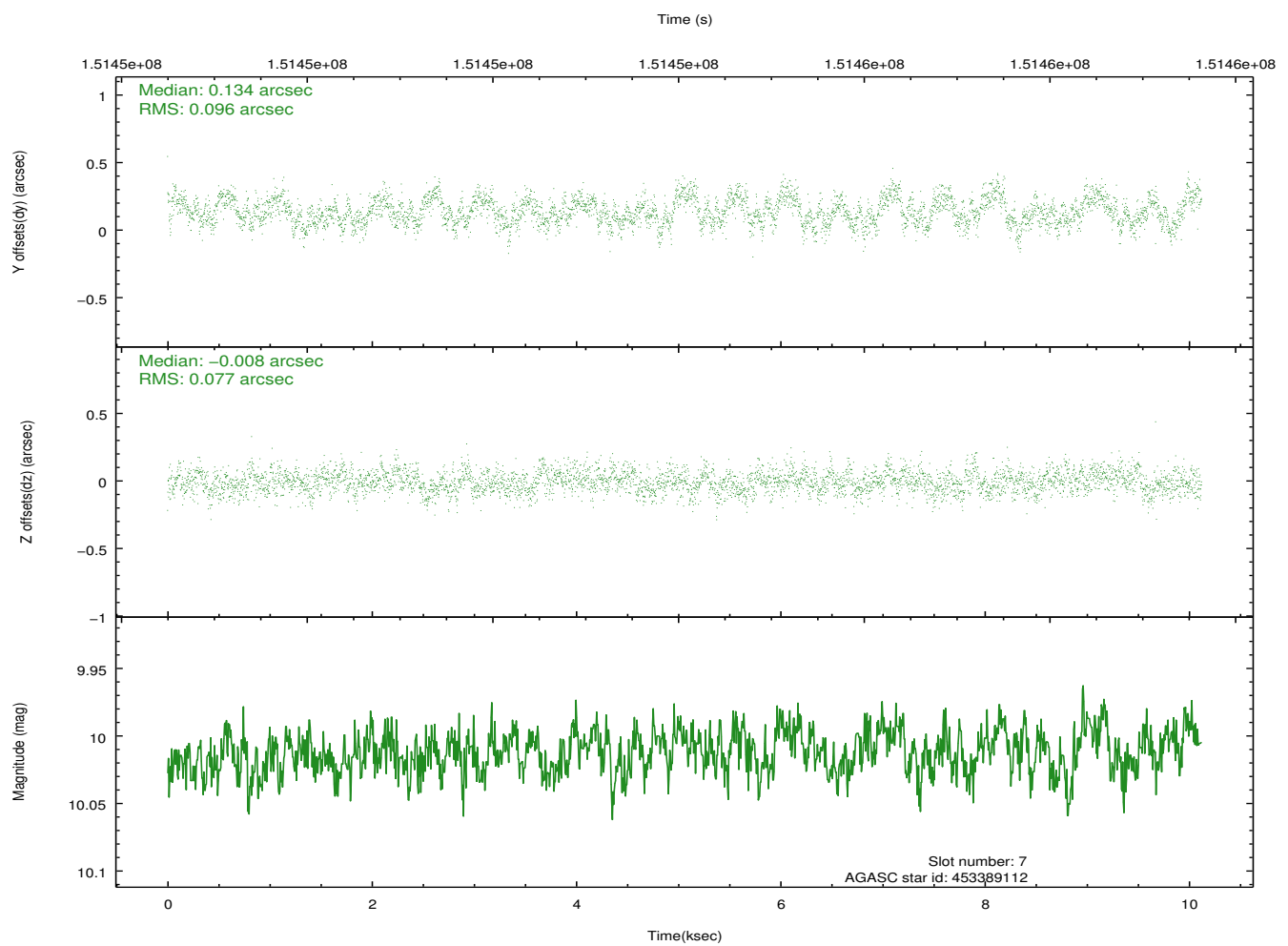
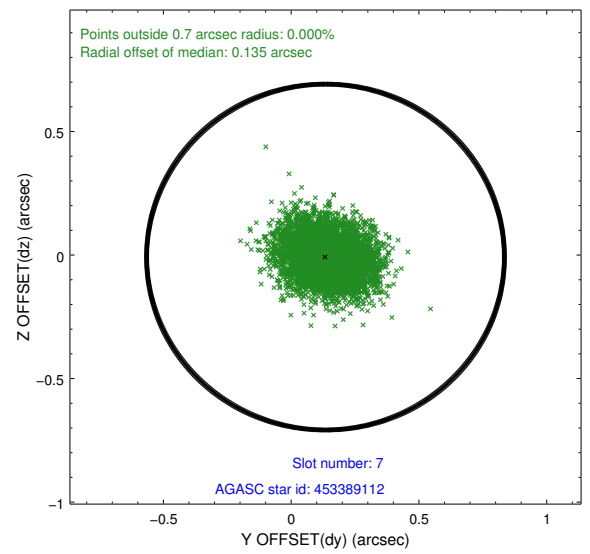
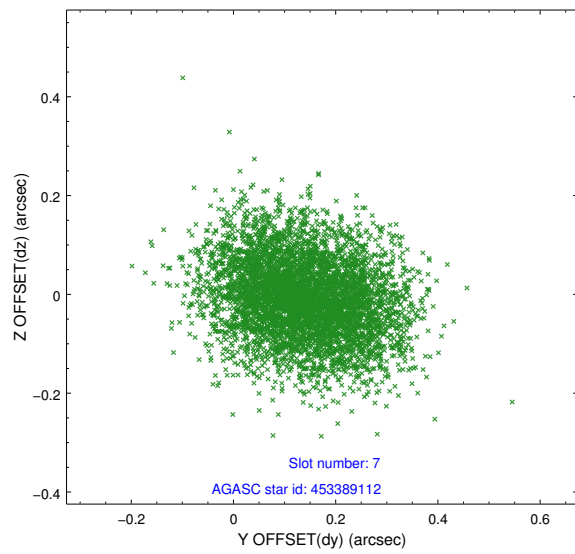
2.4.3 Slot 5



2.4.4 Slot 6

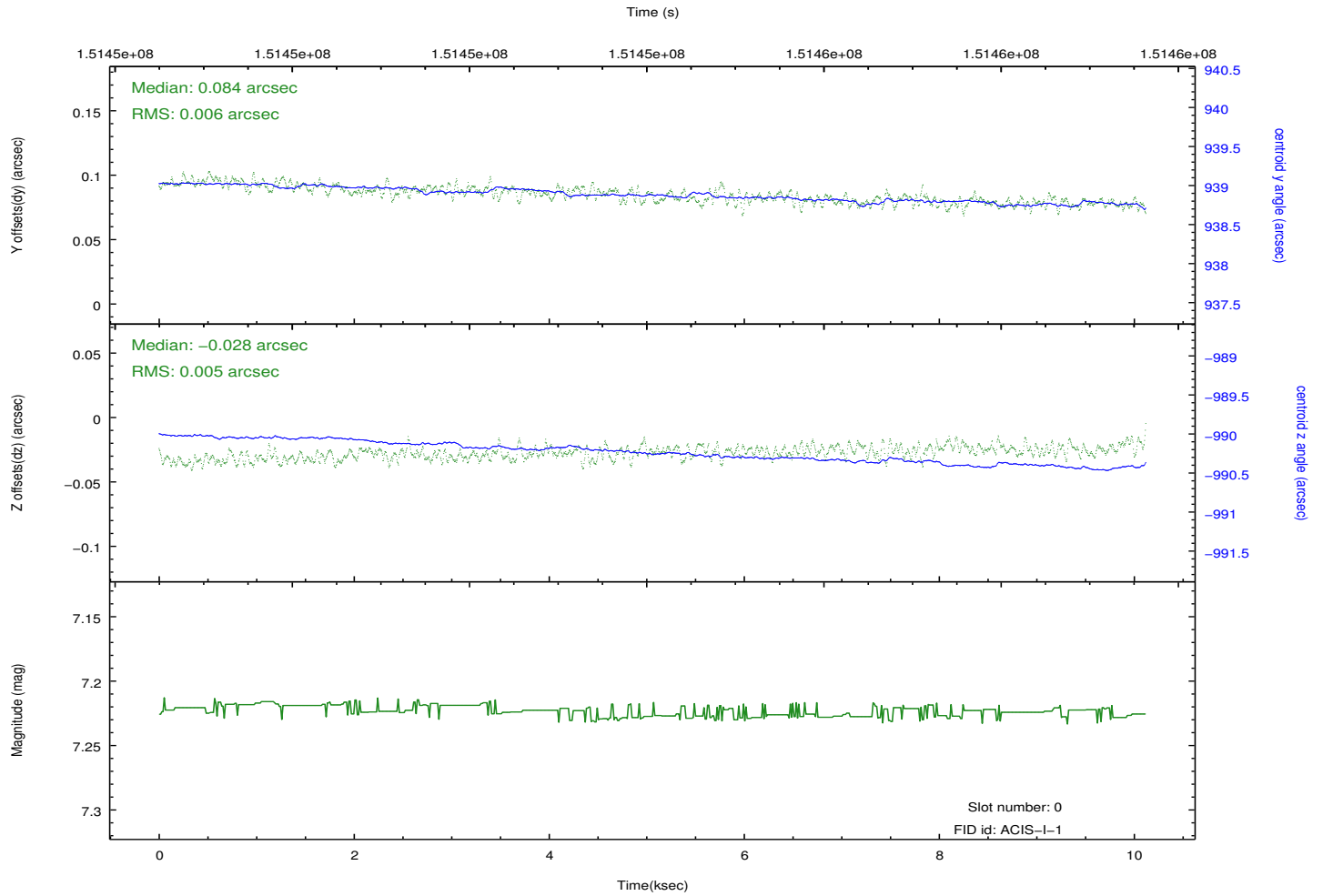
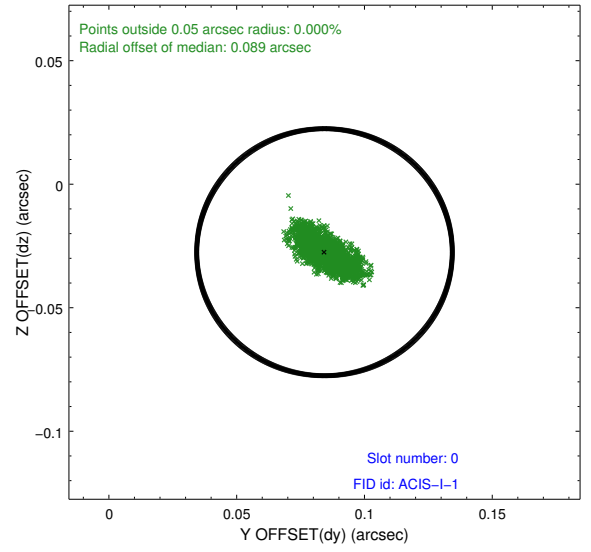
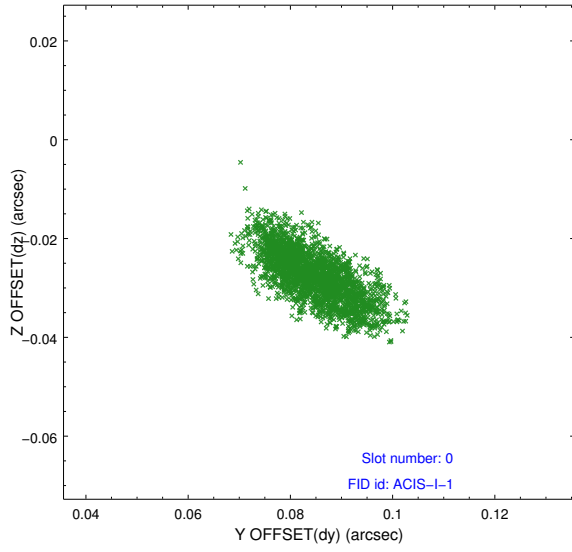


2.4.5 Slot 7

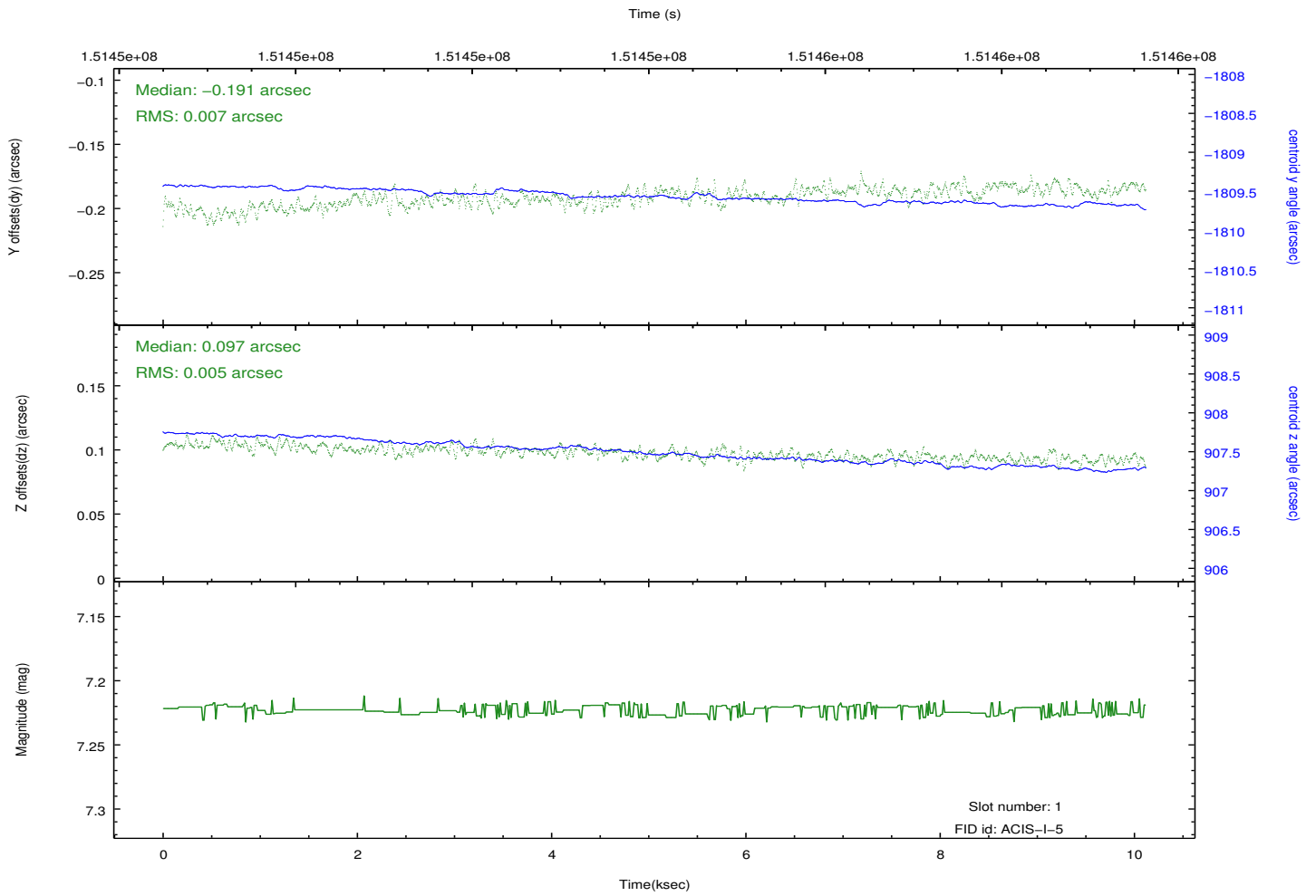
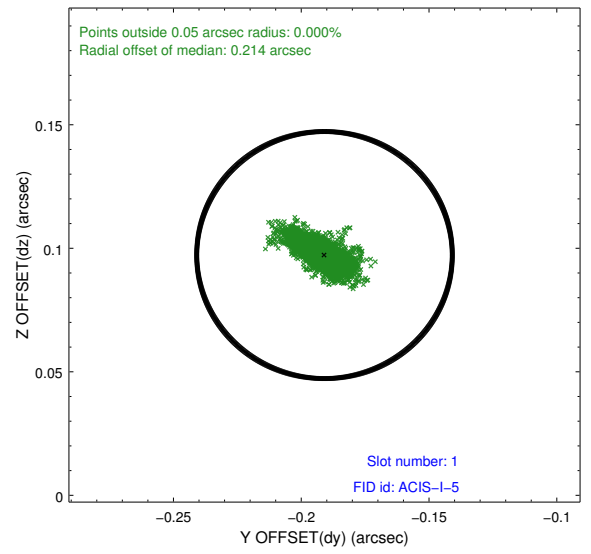
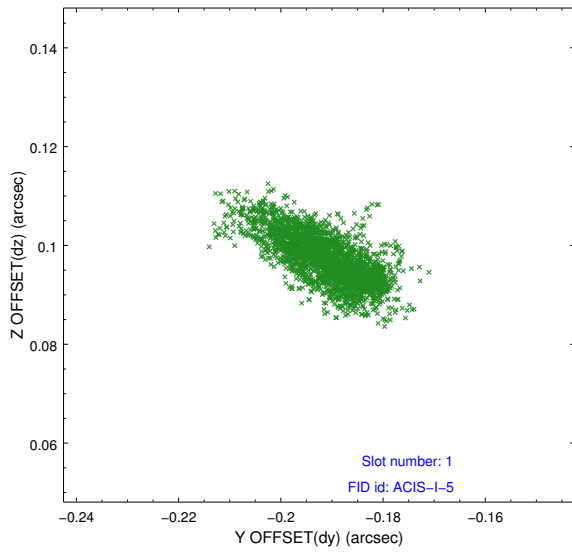


2.5 FID Slots

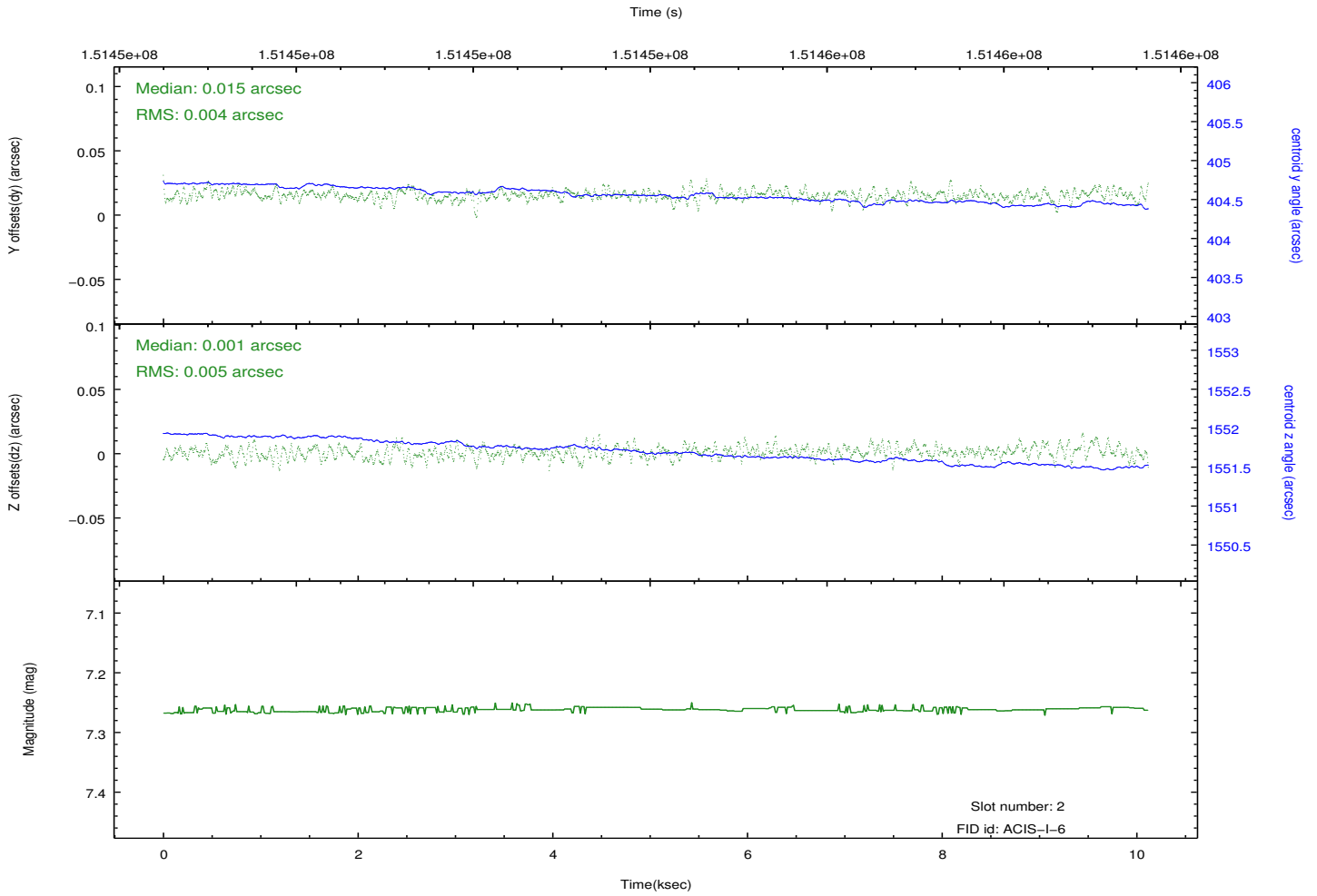
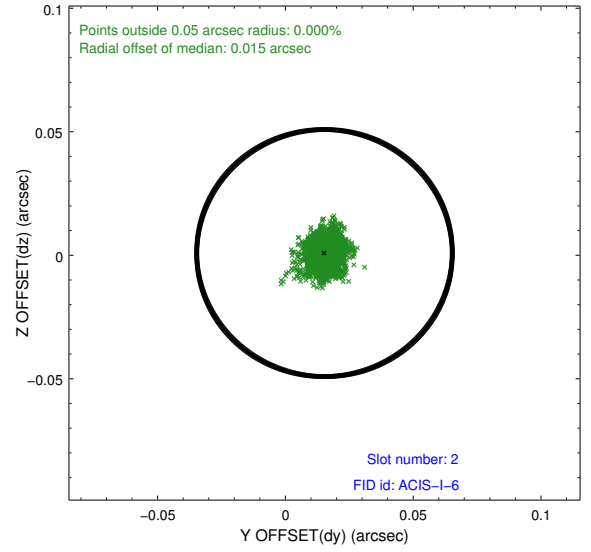
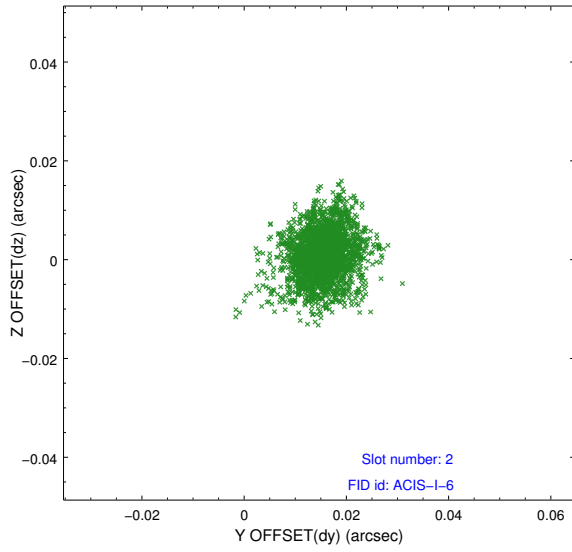
2.5.1 Slot 0



2.5.2 Slot 1



2.5.3 Slot 2



A Summary

A.1 Status

V&V Scientist	Beth Sundheim
V&V Date (YYYY-MM-DD)	2012.10.25
V&V Edition	1
V&V Disposition and Status	OK
V&V Charge Time	9.91

A.2 Comments