

V&V Reference Report

L2 ASCDS Version : 8.4.5

Observation 3274 - L2 Version 3
Chandra X-Ray Center

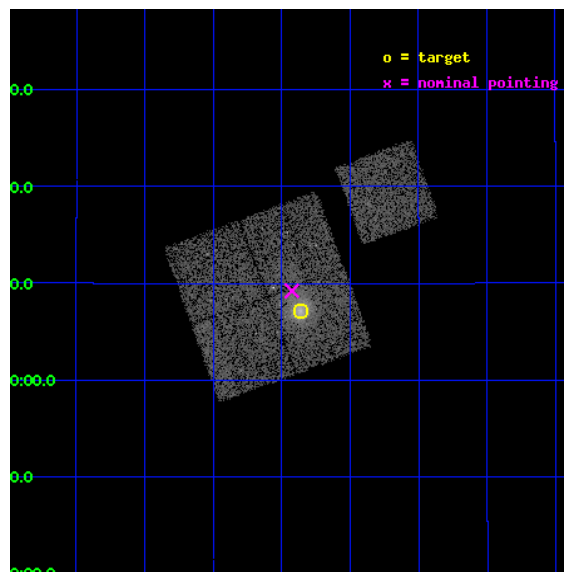
L2 Processing Date : Oct 17 2012

Contents

1	Front	2
2	OBI	3
2.1	OBI	3
2.1.1	Images	3
2.1.2	Bias	3
2.1.3	Parameters	4
2.1.4	Events	4
2.2	Compared Parameters	5
2.3	Aspect	6
2.4	Star Slots	9
2.4.1	Slot 3	9
2.4.2	Slot 4	10
2.4.3	Slot 5	11
2.4.4	Slot 6	12
2.4.5	Slot 7	13
2.5	FID Slots	14
2.5.1	Slot 0	14
2.5.2	Slot 1	15
2.5.3	Slot 2	16
A	Summary	17
A.1	Status	17
A.2	Comments	17

1 Front

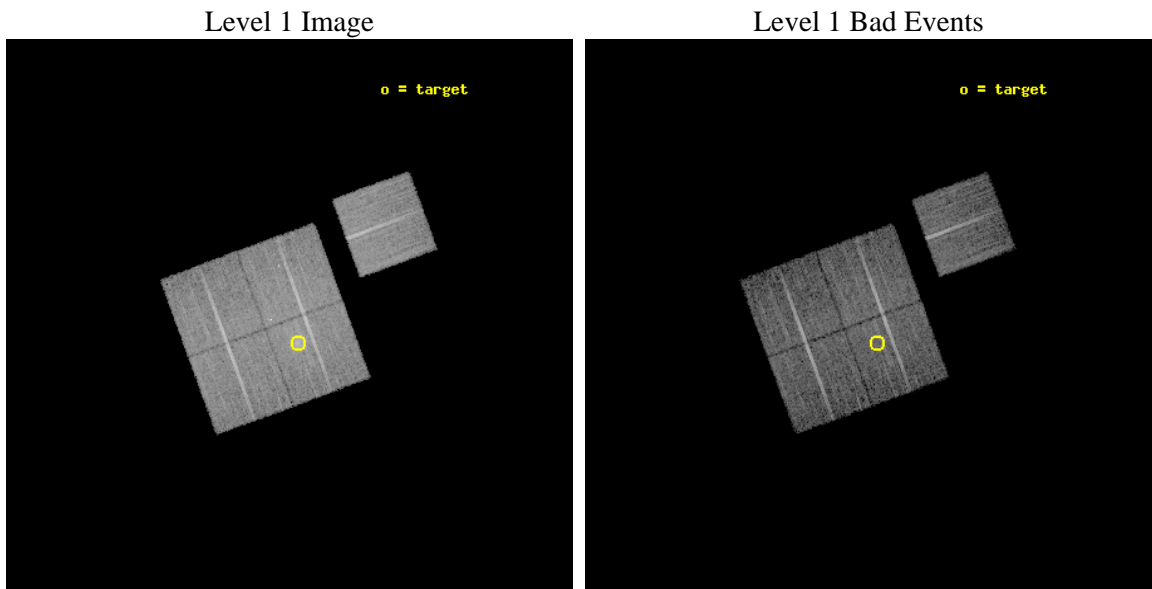
seq_num	800274	Sequence number
obs_id	3274	Observation id
title	MACS: THE X-RAY PROPERTIES OF THE MOST MASSIVE GALAXY CLUSTERS AT Z>0.3	Proposal title
observer	Dr. Harald Ebeling	Principal investigator
object	MACSJ0949.8+1708	Source name
dtcycle	0	
cycle	P	events from which exps? Prim/Second/Both
ra_targ	147.465833	Observer's specified target RA [deg]
dec_targ	17.119167	Observer's specified target Dec [deg]
ra_nom	147.48130921452	Nominal RA [deg]
dec_nom	17.153830638947	Nominal Dec [deg]
roll_nom	69.835884854566	Nominal Roll [deg]
revision	3	Processing version of data
ontime	14507.877011627	Sum of GTIs [s]
livetime	14318.320917926	Livetime [s]
ontime0	14514.159011841	Sum of GTIs [s]
ontime1	14514.1591115	Sum of GTIs [s]
ontime2	14514.159011841	Sum of GTIs [s]
ontime3	14507.877011627	Sum of GTIs [s]
ontime6	14514.158981919	Sum of GTIs [s]
l2events	37197	Number of level 2 events



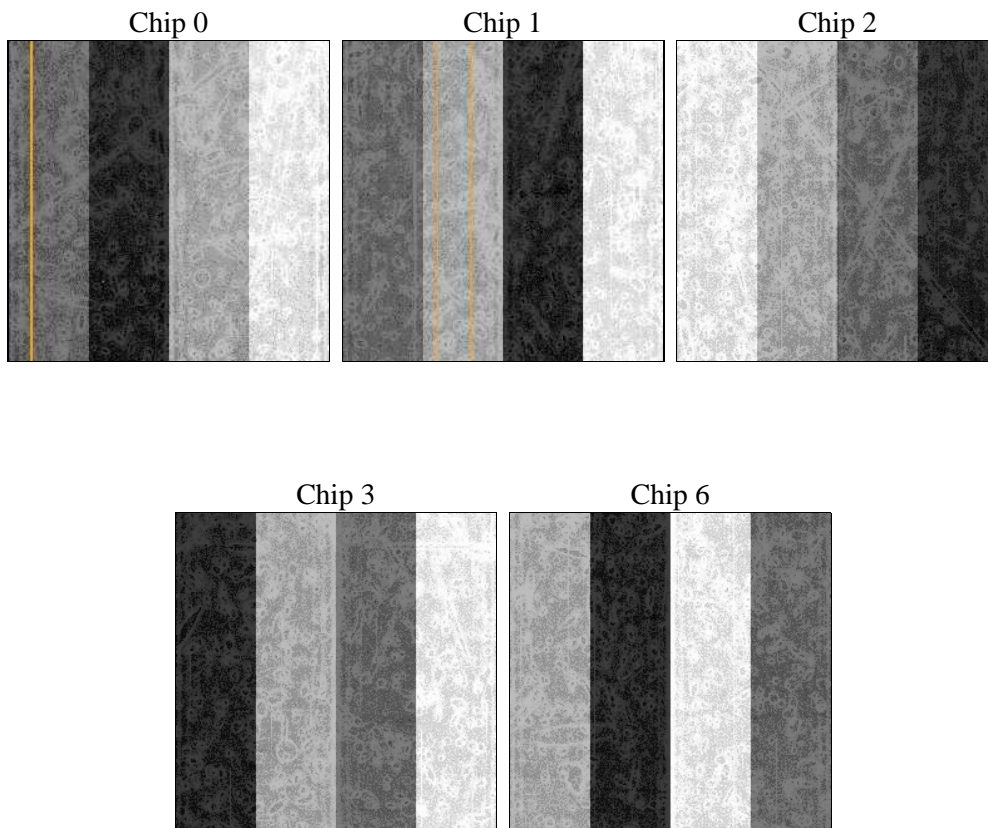
2 OBI

2.1 OBI

2.1.1 Images



2.1.2 Bias



2.1.3 Parameters

obi_num	0	Obi number	sched_exp_time	14400.000000	[s] Scheduled observation exposure time
ascdsver	8.4.5	Processing system revision	ontime	14507.877011627	Sum of GTIs [s]
caldbver	4.5.2	 	ontime0	14514.159011841	Sum of GTIs [s]
date	2012-10-17T11:07:26	Date and time of file creation	ontime1	14514.1591115	Sum of GTIs [s]
revision	3	Processing version of data	ontime2	14514.159011841	Sum of GTIs [s]
			ontime3	14507.877011627	Sum of GTIs [s]
			ontime6	14514.158981919	Sum of GTIs [s]
			l1events	363255	Number of level 1 events

2.1.4 Events

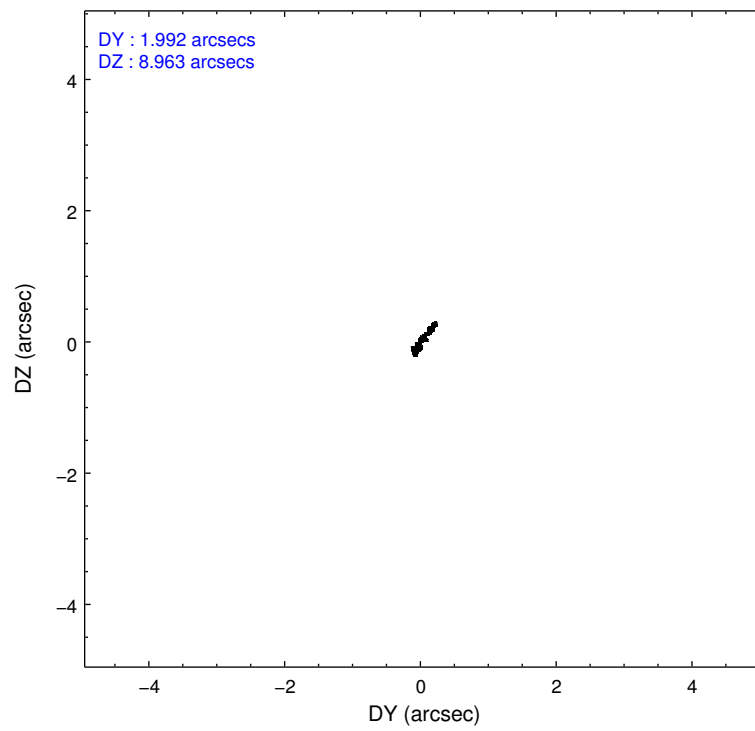
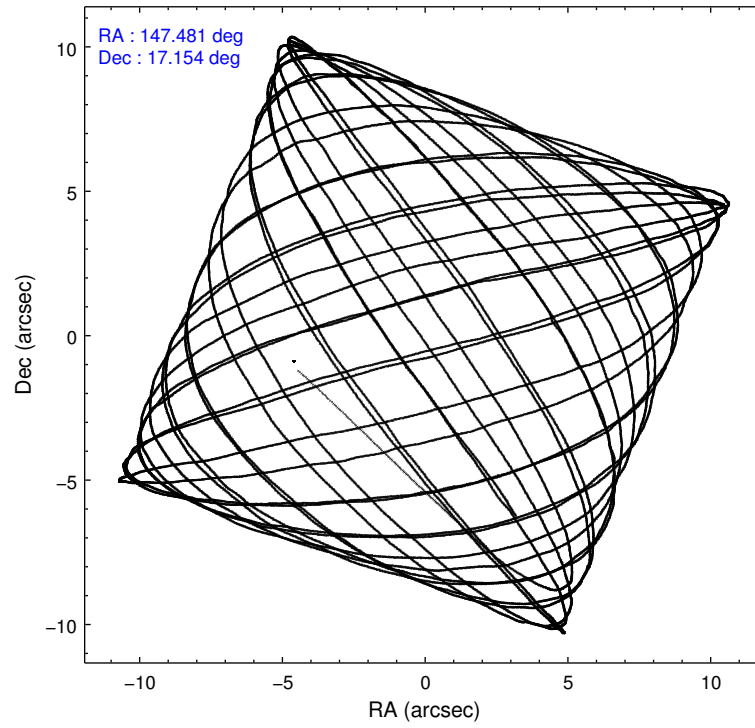
	ccd 0	ccd 1	ccd 2	ccd 3	ccd 6
level 1 events	67055	67482	78596	75982	74140
rejected events	59760	59388	69713	63721	66891
rejected %	89%	88%	88%	83%	90%

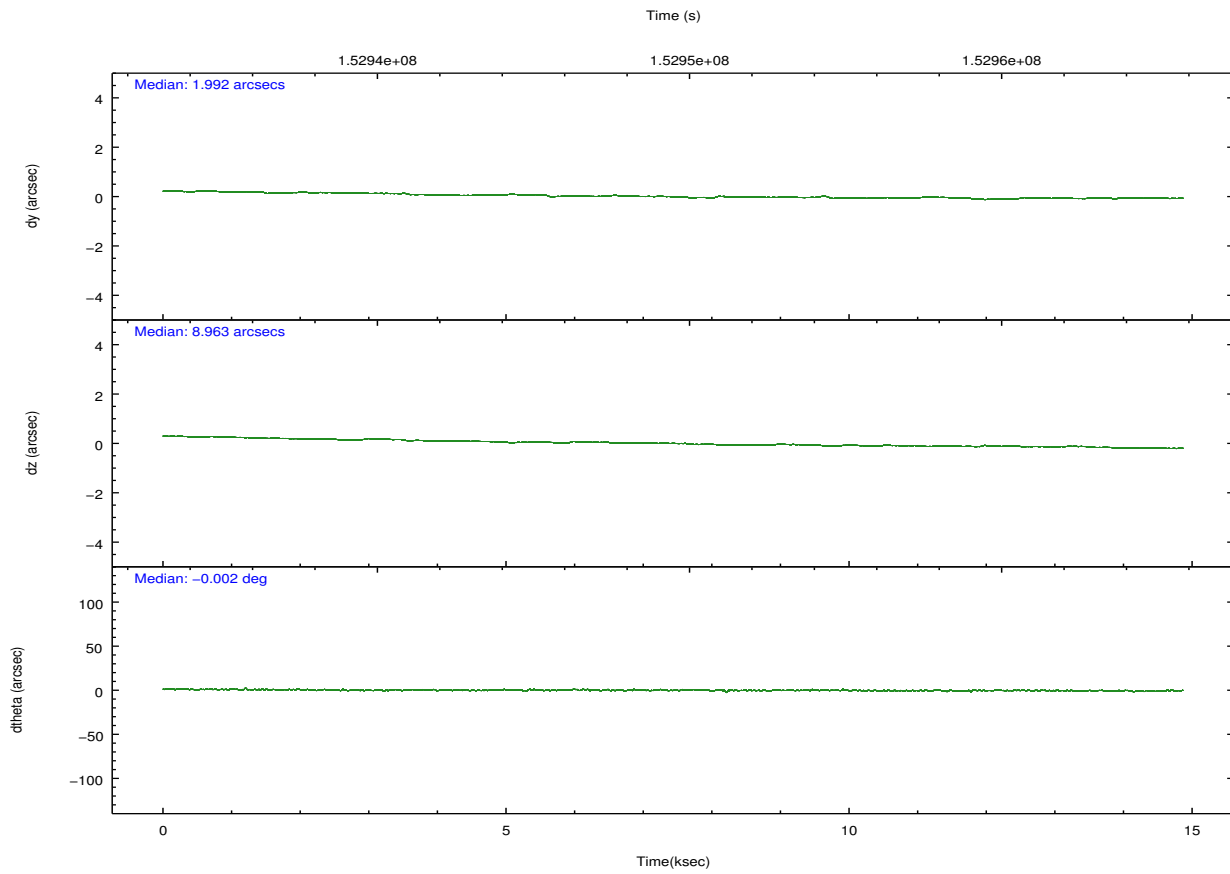
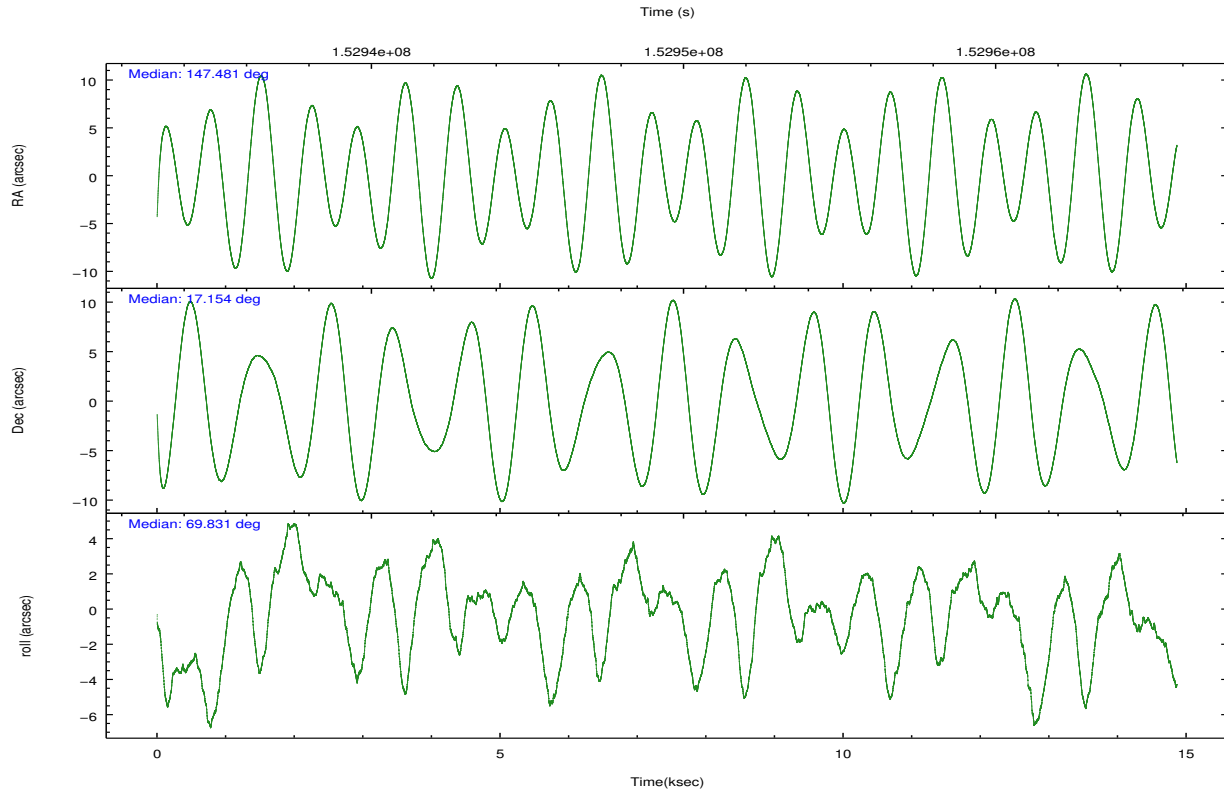
	ccd 0	ccd 1	ccd 2	ccd 3	ccd 6
grade 0 events	2595	3191	4054	7064	2506
	3%	4%	5%	9%	3%
grade 1 events	27	34	66	54	28
	0%	0%	0%	0%	0%
grade 2 events	1693	1595	1767	1932	1521
	2%	2%	2%	2%	2%
grade 3 events	881	918	907	979	792
	1%	1%	1%	1%	1%
grade 4 events	804	887	861	930	888
	1%	1%	1%	1%	1%
grade 5 events	2365	2698	2340	2797	2754
	3%	3%	2%	3%	3%
grade 6 events	1326	1507	1297	1361	1547
	1%	2%	1%	1%	2%
grade 7 events	57364	56652	67304	60865	64104
	85%	83%	85%	80%	86%

2.2 Compared Parameters

Parameter	Planned	Actual	Parameter	Planned	Actual
Instrument	ACIS	ACIS	Obspar format version number	7	7
Detector	ACIS-01236	ACIS-01236	Obspar file type	PREDICTED	ACTUAL
Grating	NONE	NONE	Obspar update status	NONE	UPDATED
Data mode	VFAINT	VFAINT	Number of optional ACIS chips dropped	0	0
Observation mode	POINTING	POINTING	On-chip summing requested	N	N
[deg] Pointing RA	147.486301	147.4813092145182	Subarray requested	NONE	NONE
[deg] Pointing Dec	17.126836	17.15383063894722	Alternating exposures requested	N	N
[deg] Pointing Roll	69.625724	69.835884854566	[s] Primary exposure time	0.000000	3.1
[mm] SIM focus pos	-0.782348	-0.7809083437167272			
[mm] SIM defocus	0	0.001439871863259334			
[mm] SIM translation stage pos	-227.742463	-227.734108438797			
[mm] SIM translation stage offset	-5.85	-5.858344564132665			
[s] Observation start time (MET)	152942771.184000	152941665.49115			
Observation start date	2002-11-06T04:05:07	2002-11-06T03:47:45			
[s] Observation end time (MET)	152957171.184000	152957769.77932			
Observation end date	2002-11-06T08:05:07	2002-11-06T08:16:09			
Read mode	TIMED	TIMED			

2.3 Aspect



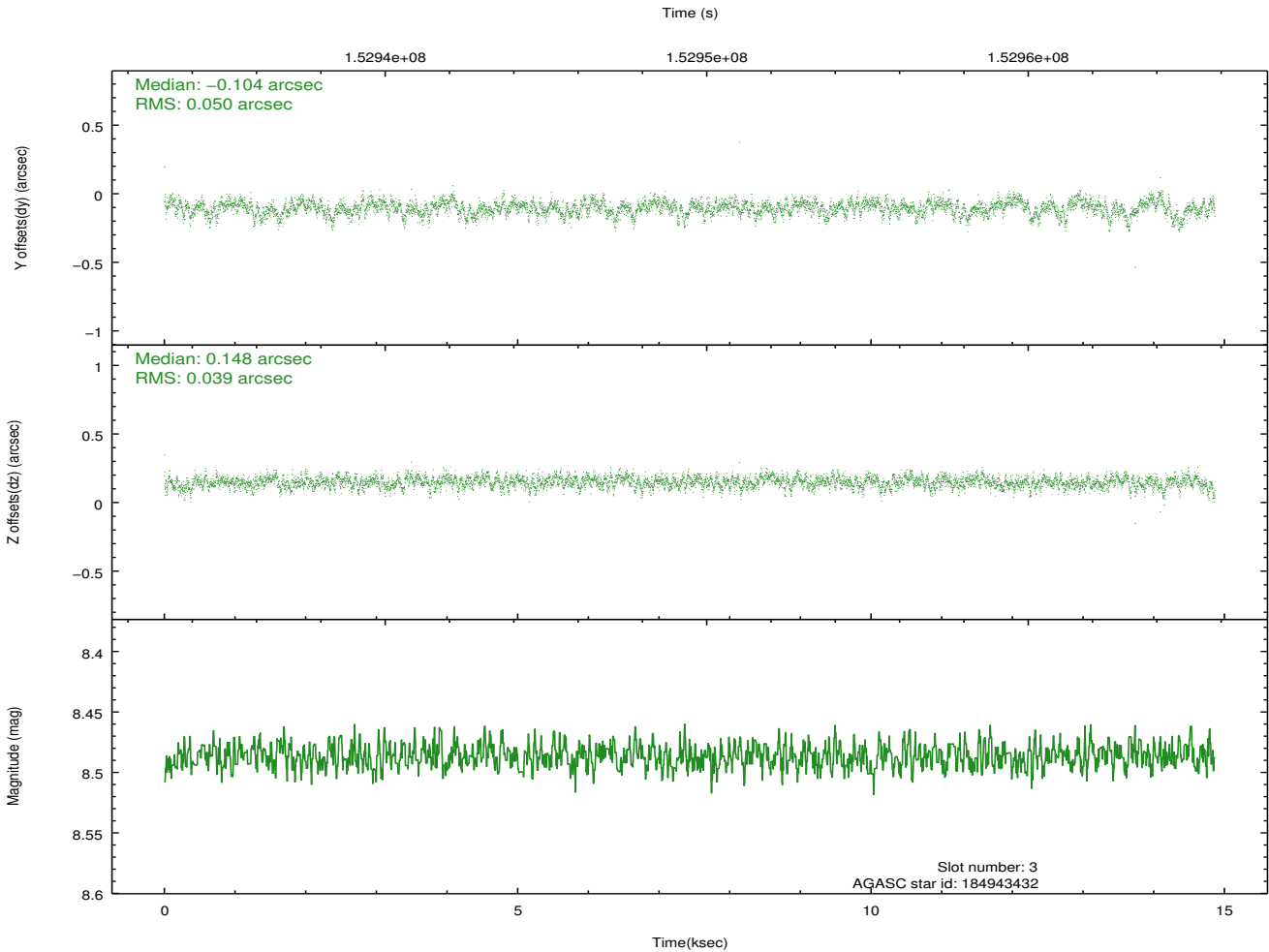
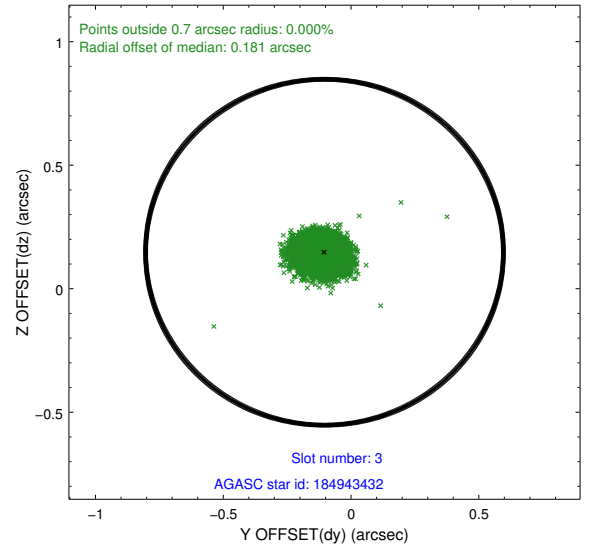
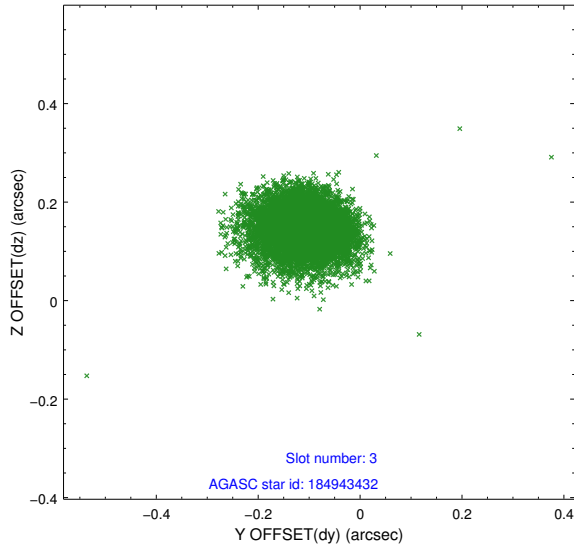


Slot Statistics

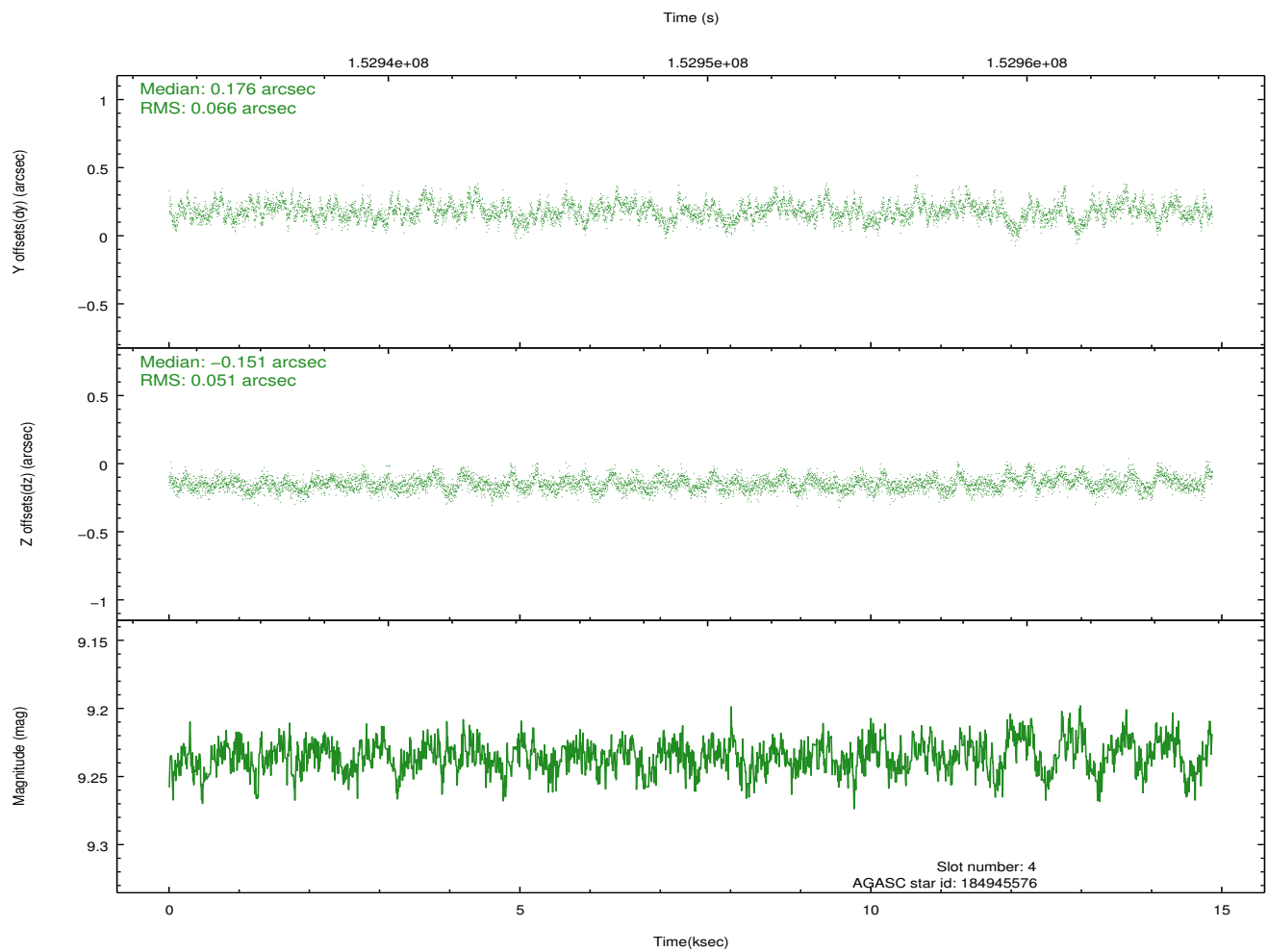
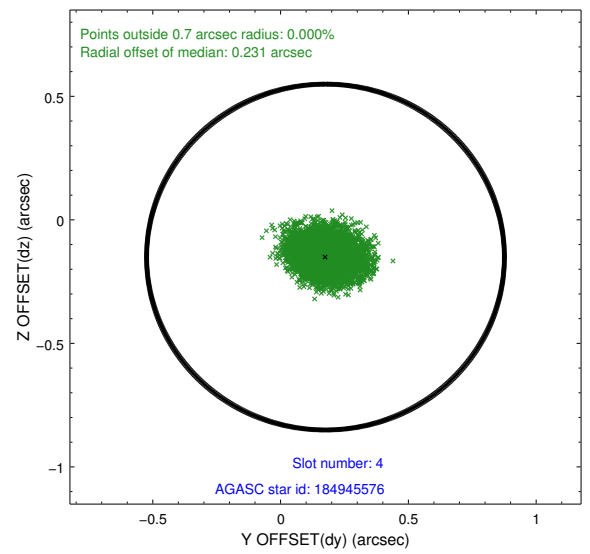
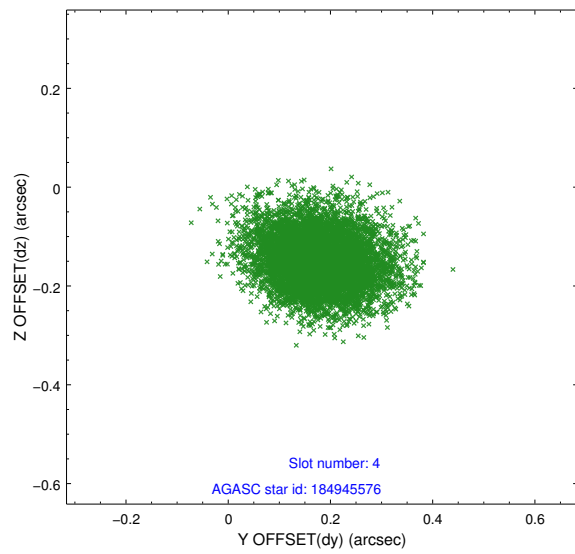
slot	status	id	mag	n_pts	med_dy	med_dz	dr1	dr2	ra	dec	mean_y	mean_z
0	FID	ACIS-I-1	7.24	3625	0.027	-0.007	0.010	0.016	0.000000	0.000000	937.71	-952.67
1	FID	ACIS-I-5	7.23	3626	-0.128	0.055	0.007	0.011	0.000000	0.000000	-1810.37	944.71
2	FID	ACIS-I-6	7.25	3626	0.009	0.024	0.009	0.013	0.000000	0.000000	402.92	1589.52
3	GUIDE	184943432	8.49	7250	-0.104	0.148	0.065	0.111	147.913077	17.475778	1689.28	-936.07
4	GUIDE	184945576	9.24	7250	0.176	-0.151	0.088	0.146	147.062507	16.898087	-1278.07	1081.59
5	GUIDE	184946632	7.58	7252	0.118	0.175	0.061	0.096	147.807278	16.320002	-2335.47	-2050.82
6	GUIDE	184943176	9.28	7250	-0.123	0.234	0.106	0.178	148.344879	17.405804	1974.72	-2413.12
7	GUIDE	185341432	9.61	7247	-0.062	-0.407	0.122	0.192	146.917165	17.566119	805.45	2381.94

2.4 Star Slots

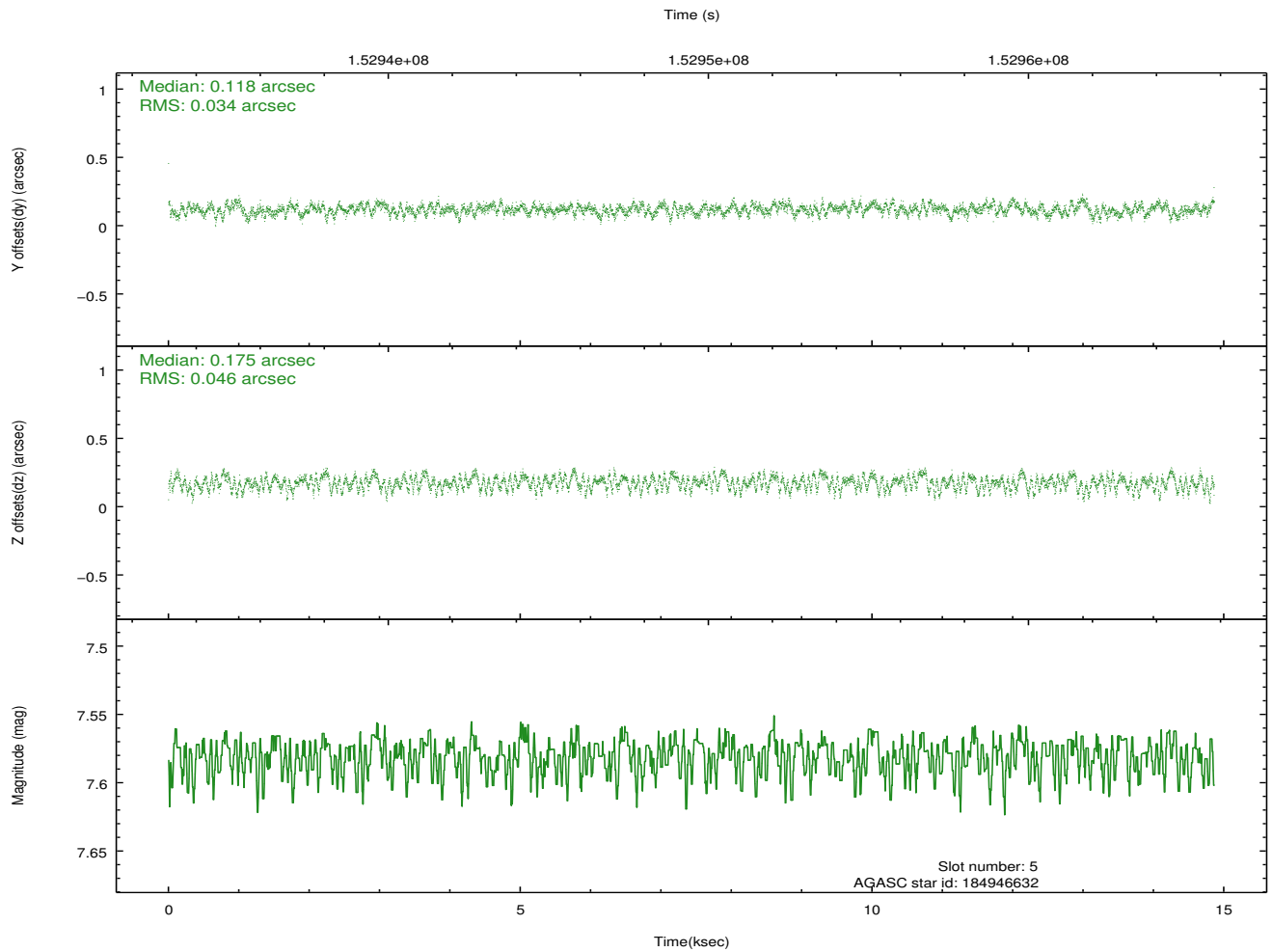
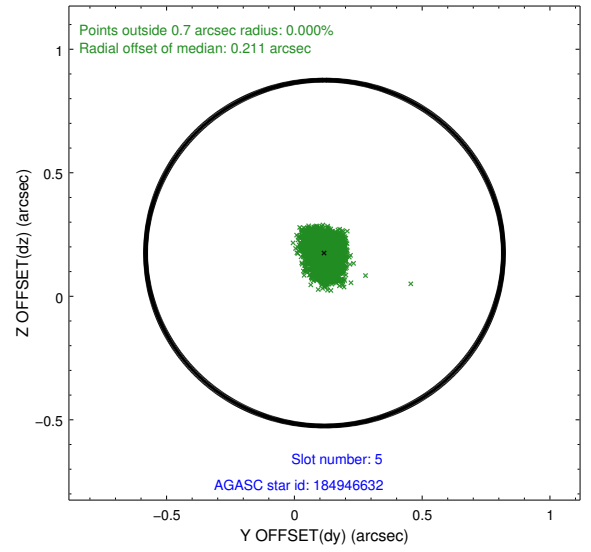
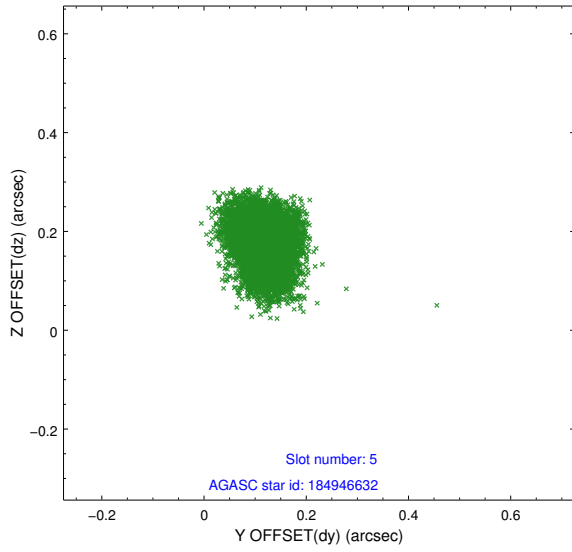
2.4.1 Slot 3



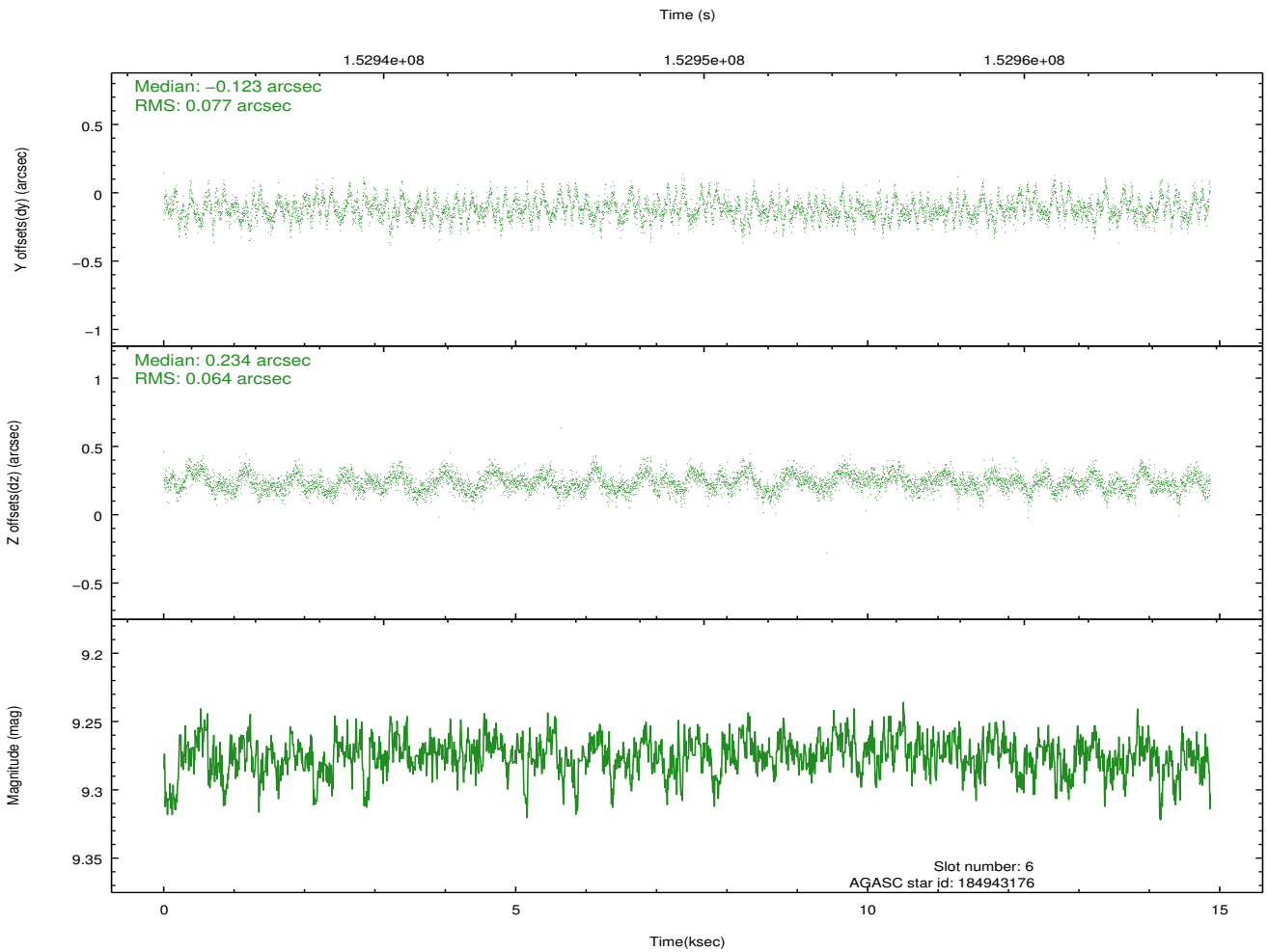
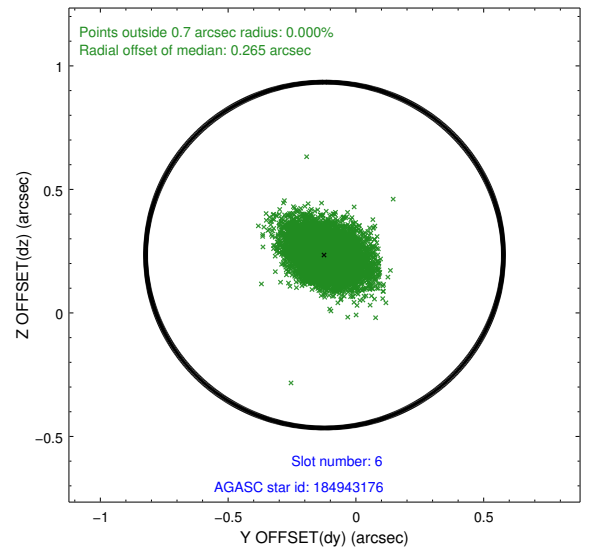
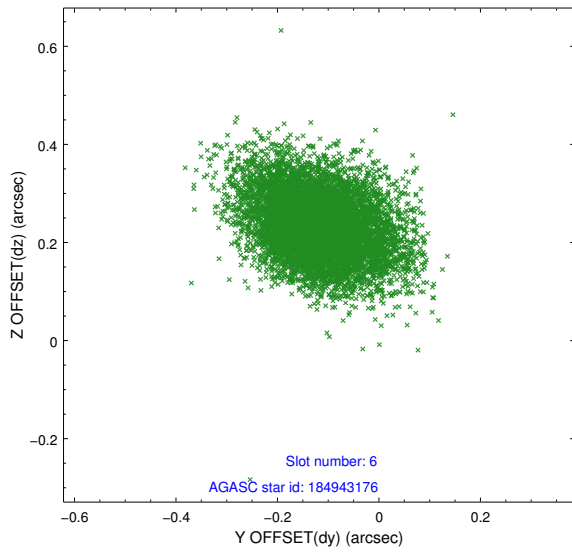
2.4.2 Slot 4



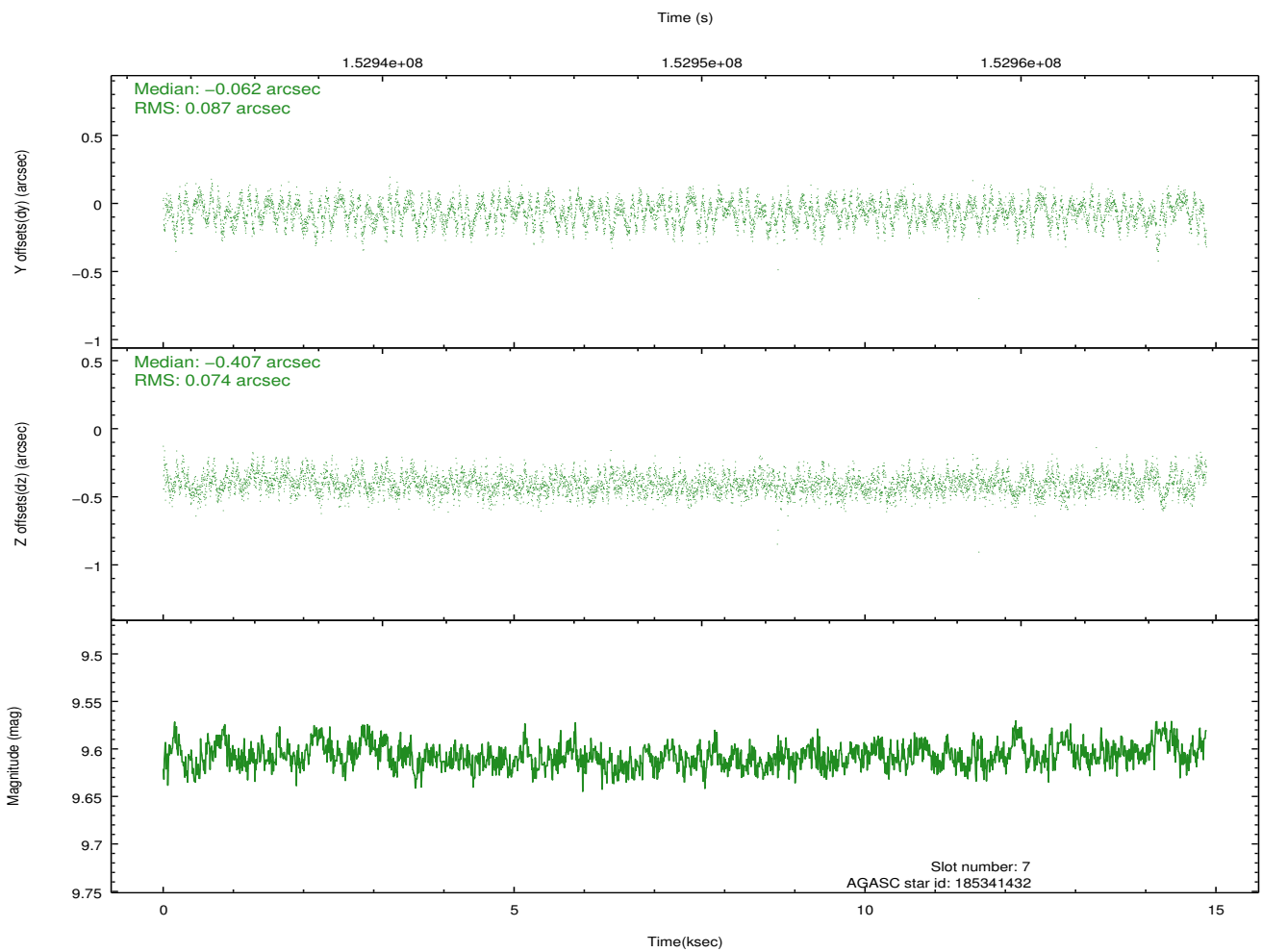
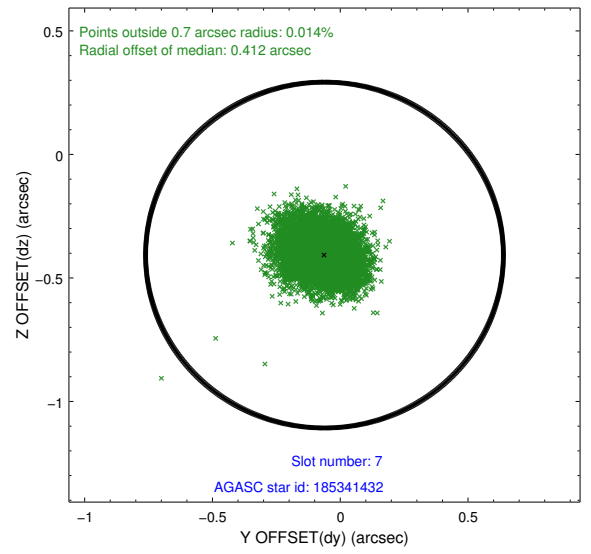
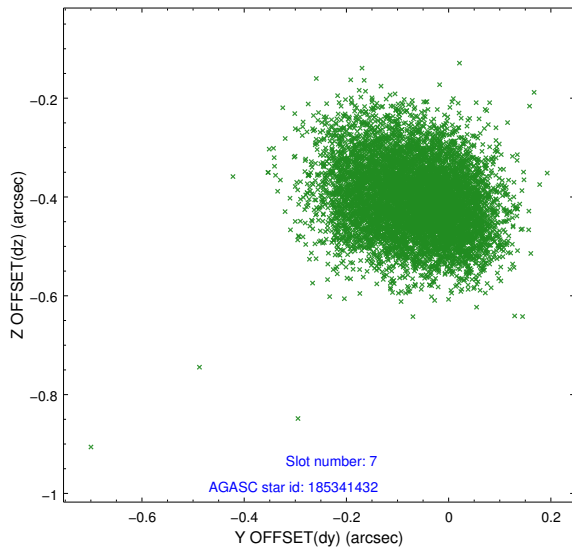
2.4.3 Slot 5



2.4.4 Slot 6

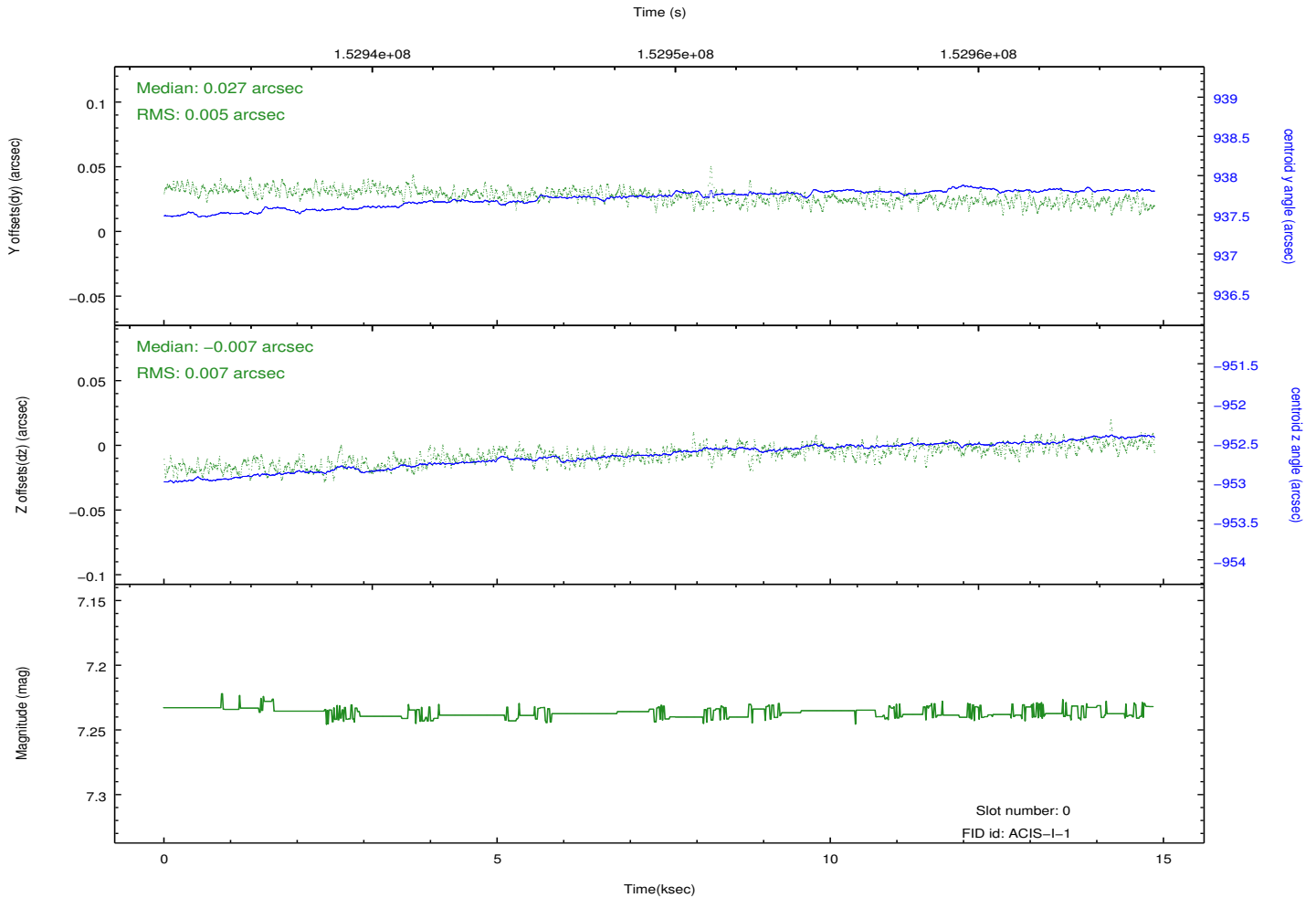
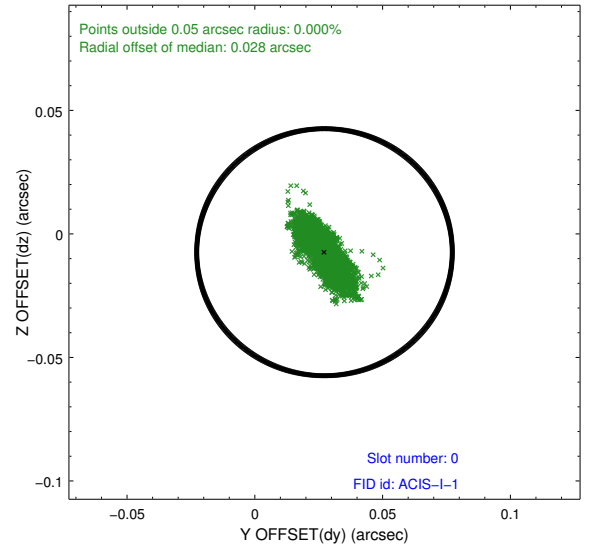
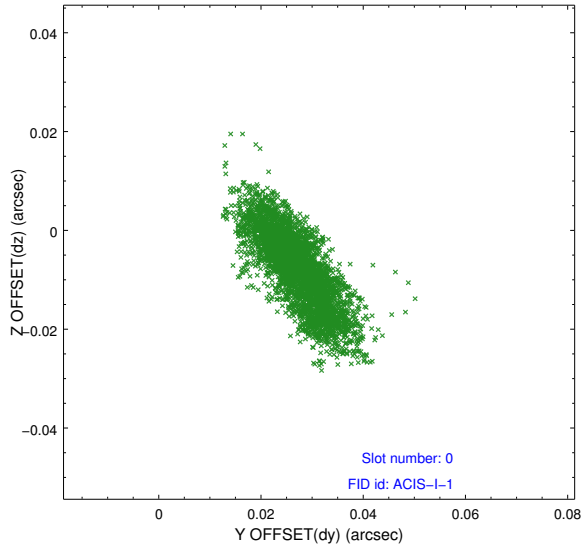


2.4.5 Slot 7

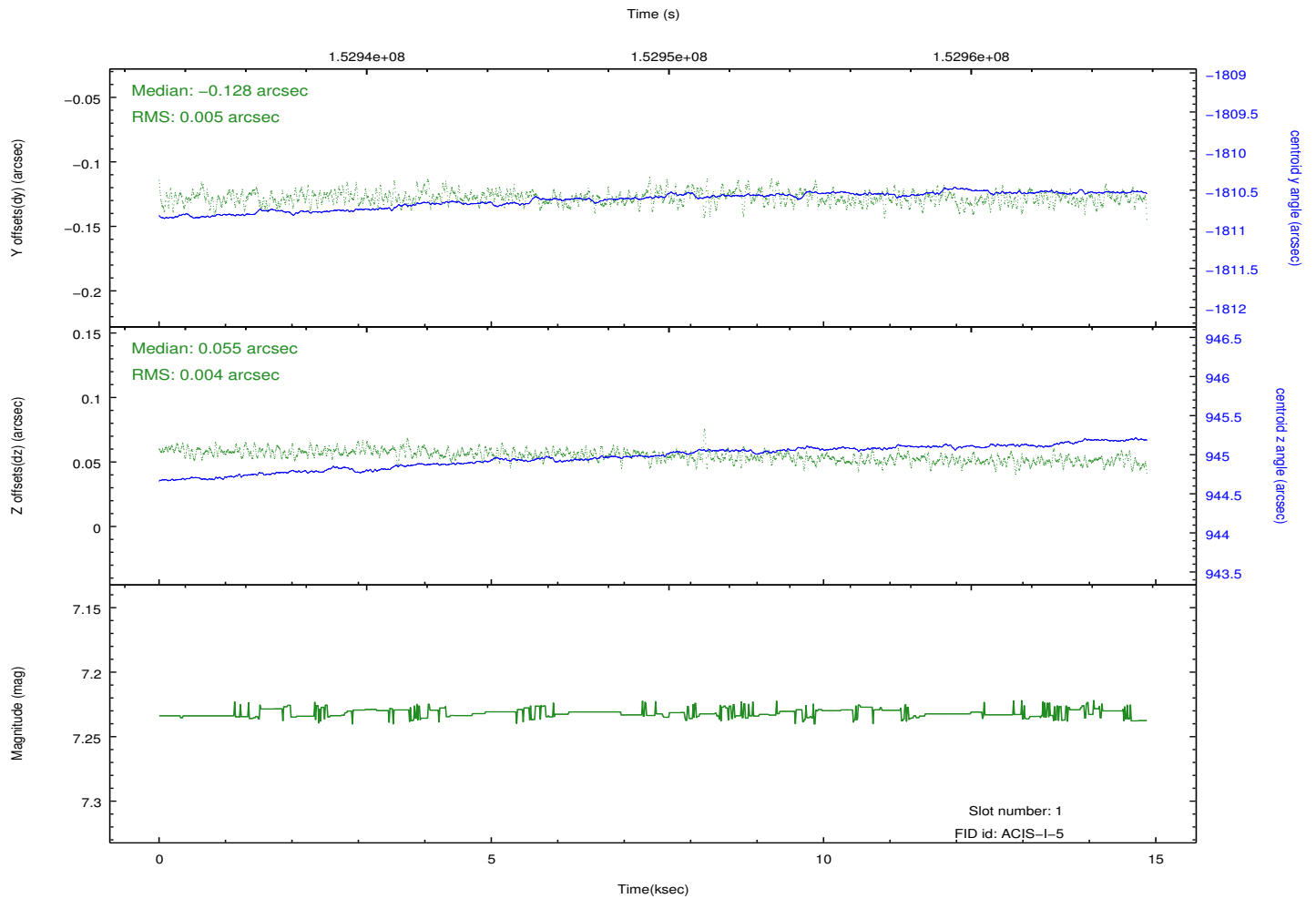
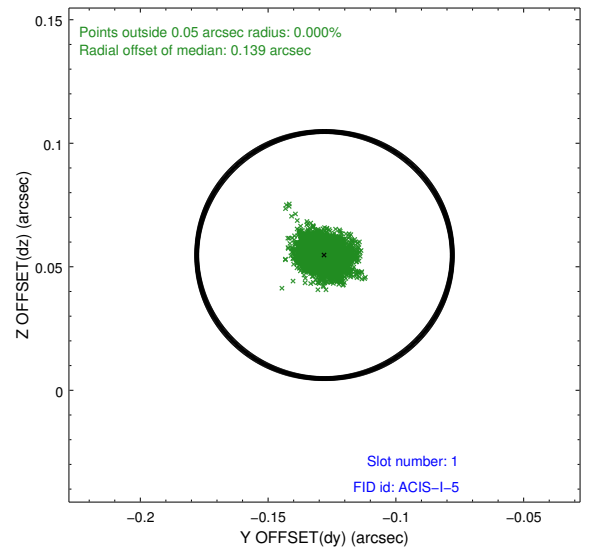
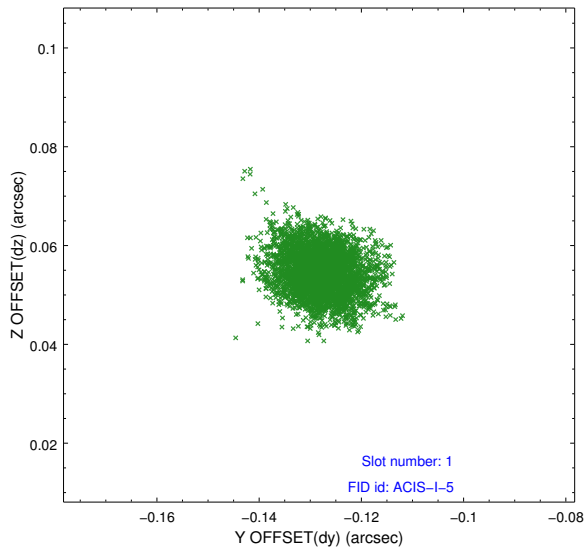


2.5 FID Slots

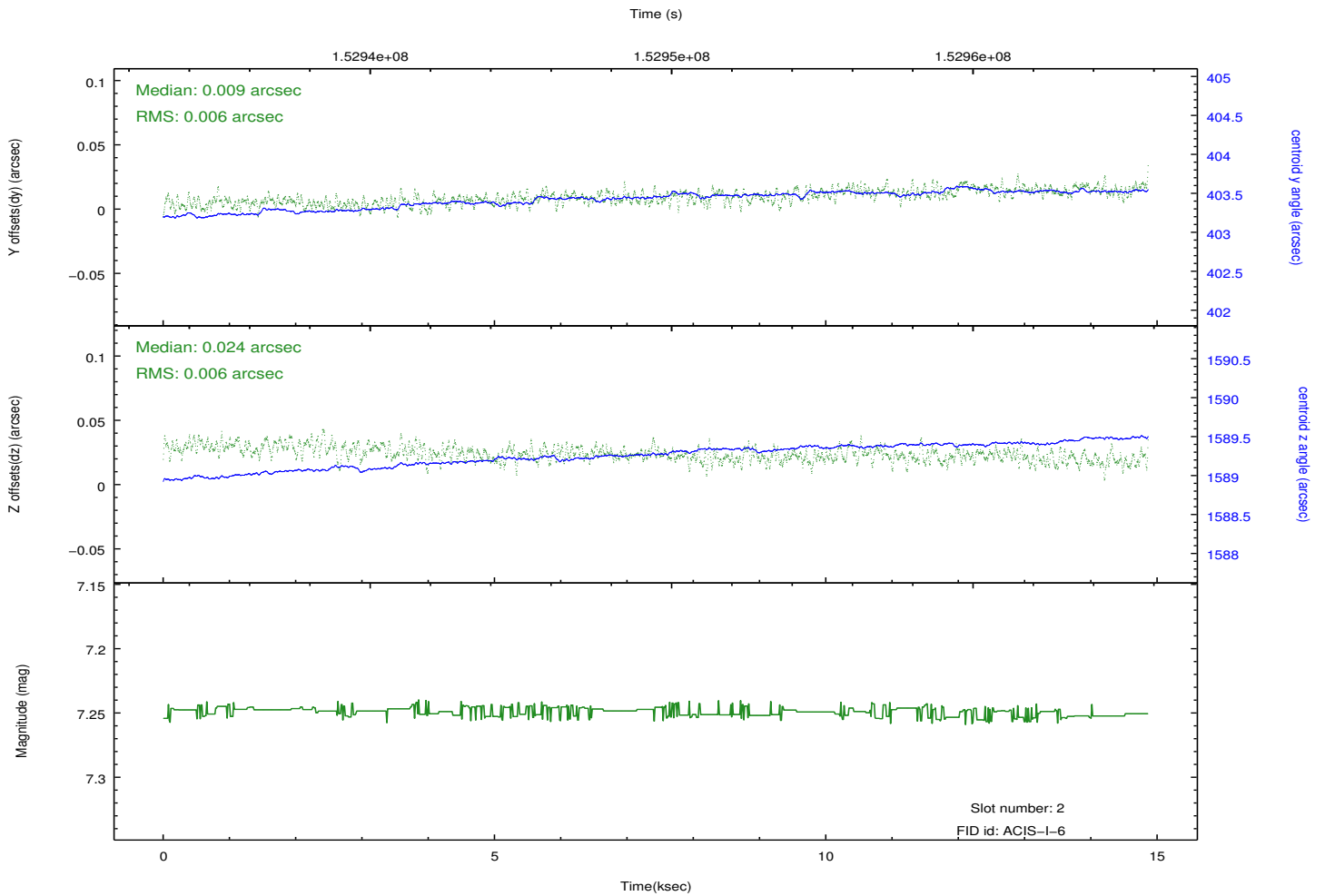
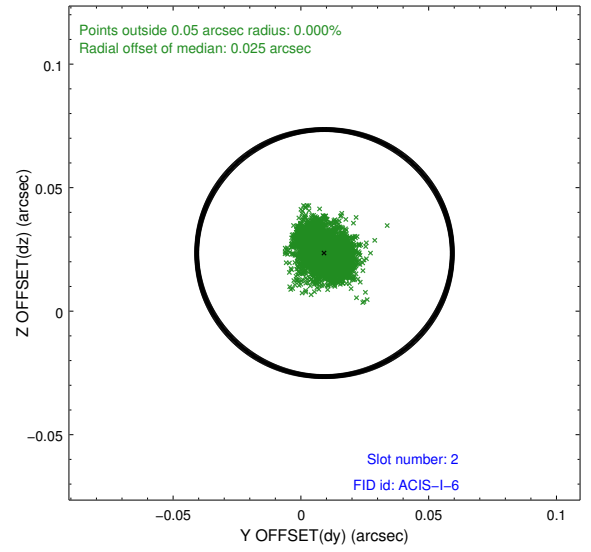
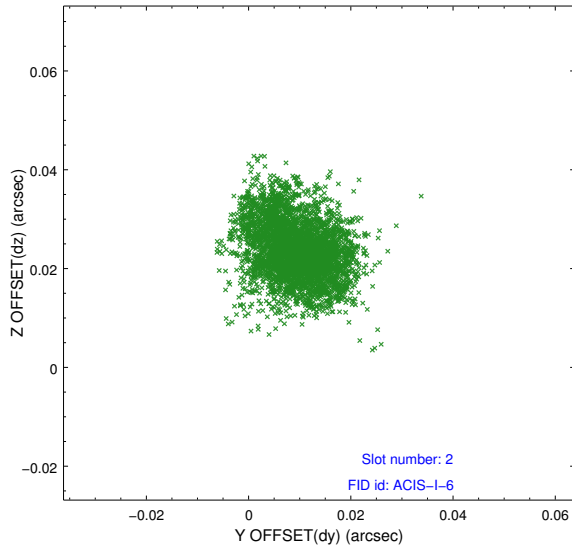
2.5.1 Slot 0



2.5.2 Slot 1



2.5.3 Slot 2



A Summary

A.1 Status

V&V Scientist	Jen Lauer
V&V Date (YYYY-MM-DD)	2012.10.26
V&V Edition	1
V&V Disposition and Status	OK
V&V Charge Time	14.51

A.2 Comments