

# V&V Reference Report

## L2 ASCDS Version : 8.4.5

Observation 3344 - L2 Version 3  
Chandra X-Ray Center

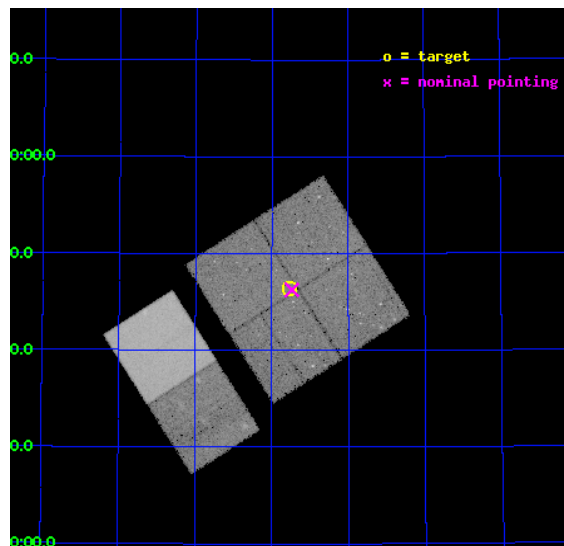
L2 Processing Date : Oct 7 2012

## Contents

<b>1</b>	<b>Front</b>	<b>2</b>
<b>2</b>	<b>OBI</b>	<b>3</b>
2.1	OBI . . . . .	3
2.1.1	Images . . . . .	3
2.1.2	Bias . . . . .	3
2.1.3	Parameters . . . . .	4
2.1.4	Events . . . . .	4
2.2	Compared Parameters . . . . .	5
2.3	Aspect . . . . .	6
2.4	Star Slots . . . . .	9
2.4.1	Slot 3 . . . . .	9
2.4.2	Slot 4 . . . . .	10
2.4.3	Slot 5 . . . . .	11
2.4.4	Slot 6 . . . . .	12
2.4.5	Slot 7 . . . . .	13
2.5	FID Slots . . . . .	14
2.5.1	Slot 0 . . . . .	14
2.5.2	Slot 1 . . . . .	15
2.5.3	Slot 2 . . . . .	16
<b>A</b>	<b>Summary</b>	<b>17</b>
A.1	Status . . . . .	17
A.2	Comments . . . . .	17

# 1 Front

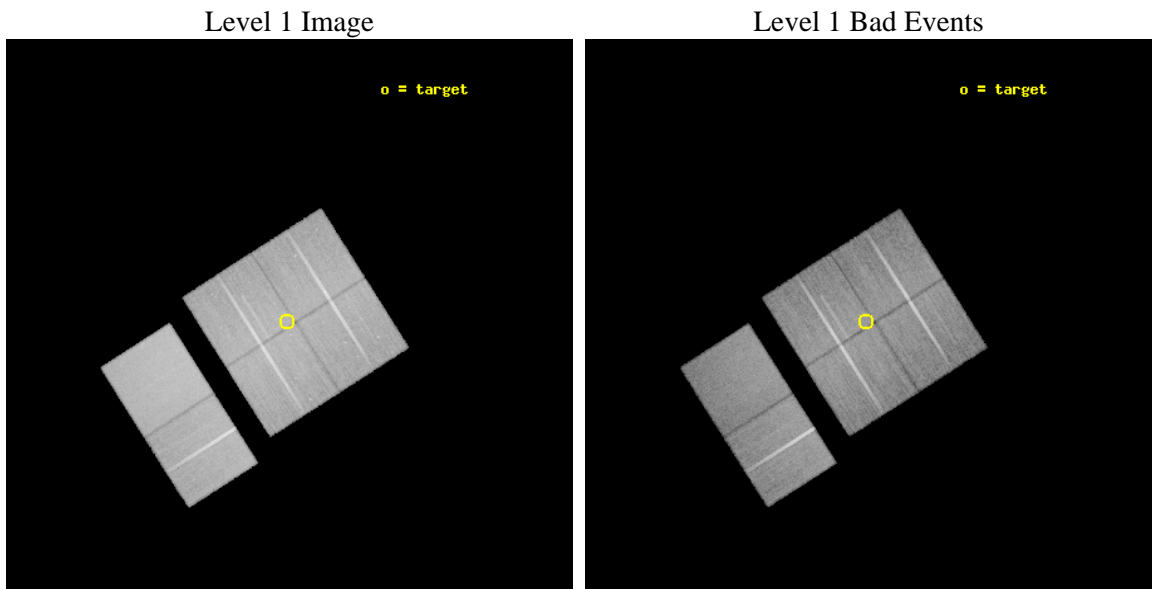
seq_num	900183	Sequence number
obs_id	3344	Observation id
title	WIDE-FIELD CHANDRA SURVEY OF THE LOCKMAN HOLE-NORTHWEST	Proposal t
observer	Prof. Amy Barger	Principal investigator
object	LH-NW-7	Source name
dtcycle	0	&#160
cycle	P	events from which exps? Prim/Second/Both
ra_targ	158.191666	Observer's specified target RA [deg]
dec_targ	57.773609	Observer's specified target Dec [deg]
ra_nom	158.18443968158	Nominal RA [deg]
dec_nom	57.770975229236	Nominal Dec [deg]
roll_nom	237.4881235898	Nominal Roll [deg]
revision	3	Processing version of data
ontime	39039.024455428	Sum of GTIs [s]
livetime	38544.688821295	Livetime [s]
ontime0	39035.660345256	Sum of GTIs [s]
ontime1	39029.219454736	Sum of GTIs [s]
ontime2	39035.742455155	Sum of GTIs [s]
ontime3	39039.024455428	Sum of GTIs [s]
ontime6	39035.865565181	Sum of GTIs [s]
ontime7	39042.306455702	Sum of GTIs [s]
l2events	272509	Number of level 2 events



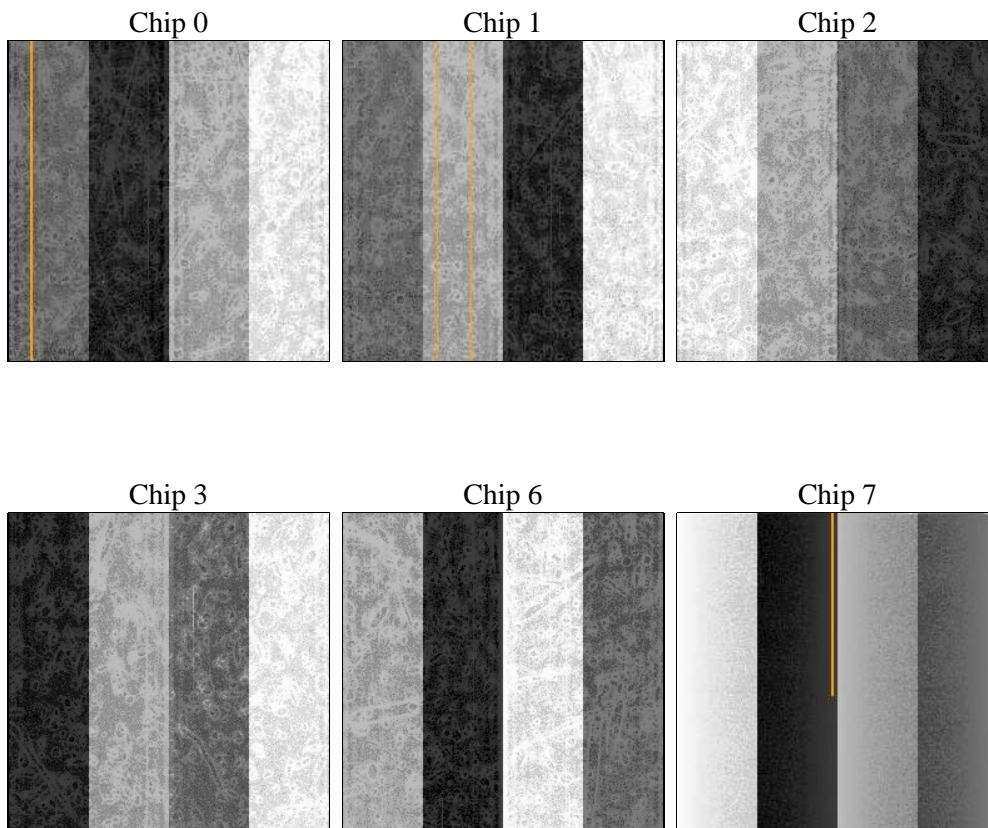
## 2 OBI

### 2.1 OBI

#### 2.1.1 Images



#### 2.1.2 Bias



### 2.1.3 Parameters

obi_num	0	Obi number	sched_exp_time	39000.000000	[s] Scheduled observation exposure time
ascdsver	8.4.5	Processing system revision	ontime	39039.024455428	Sum of GTIs [s]
caldbver	4.5.2	&#160	ontime0	39035.660345256	Sum of GTIs [s]
date	2012-10-07T09:25:39	Date and time of file creation	ontime1	39029.219454736	Sum of GTIs [s]
revision	3	Processing version of data	ontime2	39035.742455155	Sum of GTIs [s]
			ontime3	39039.024455428	Sum of GTIs [s]
			ontime6	39035.865565181	Sum of GTIs [s]
			ontime7	39042.306455702	Sum of GTIs [s]
			l1events	1611079	Number of level 1 events

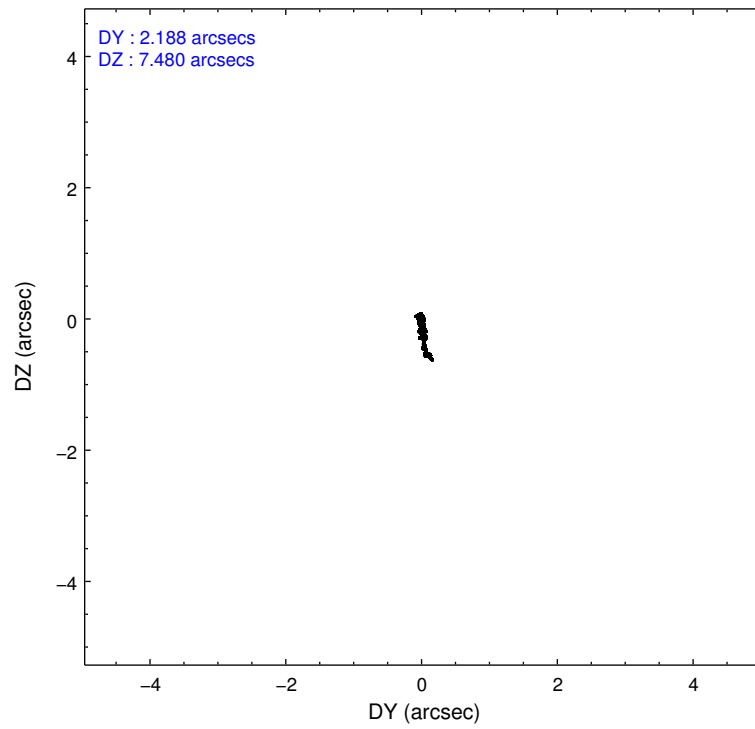
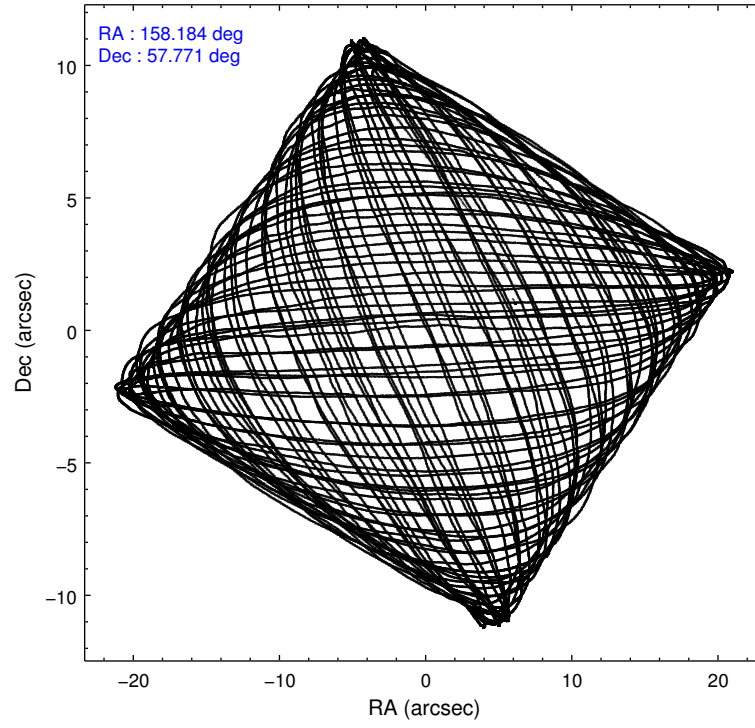
### 2.1.4 Events

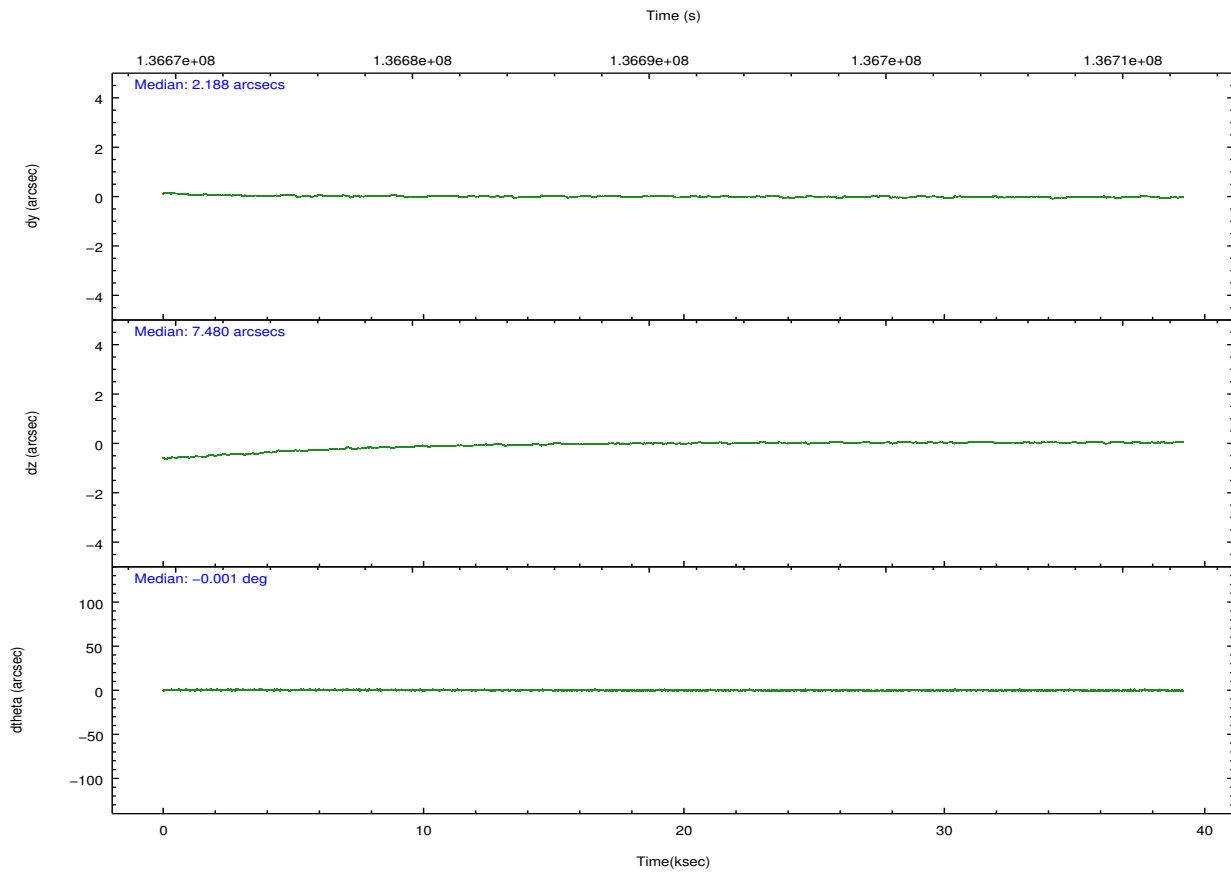
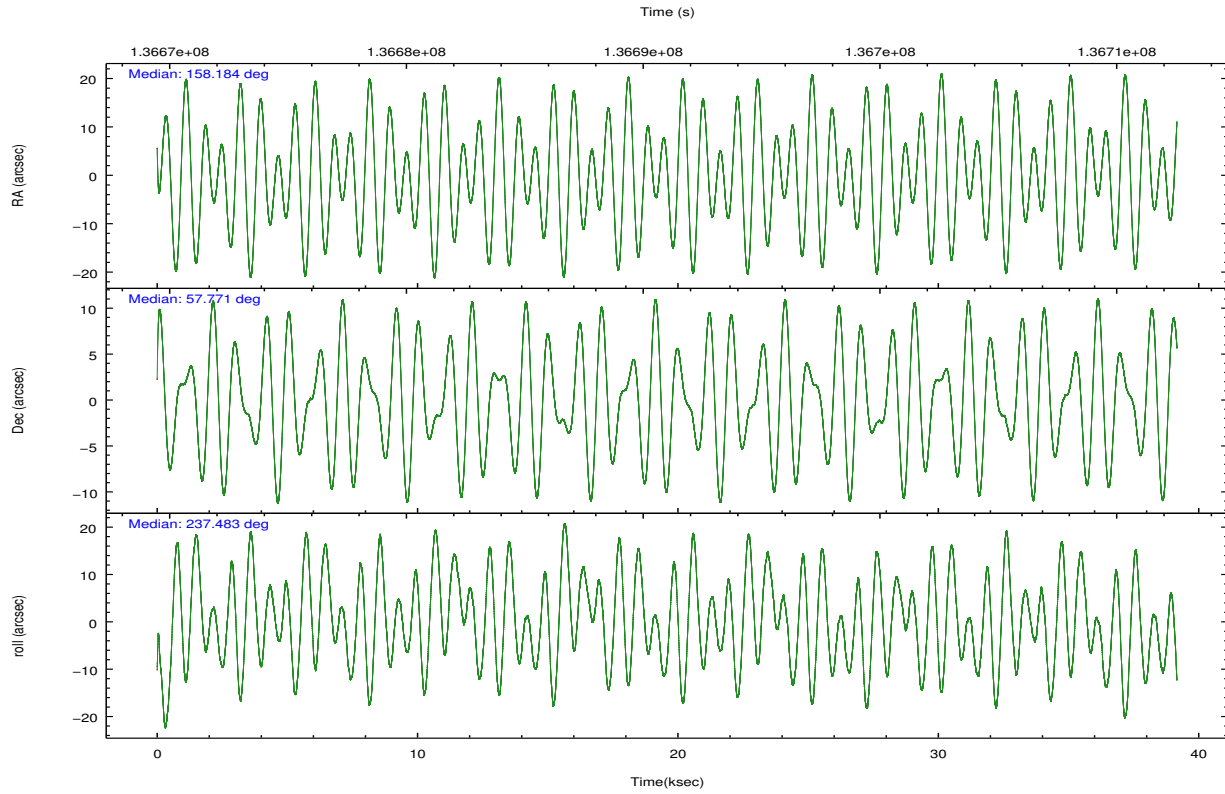
	ccd 0	ccd 1	ccd 2	ccd 3	ccd 6	ccd 7		ccd 0	ccd 1	ccd 2	ccd 3	ccd 6	ccd 7
level 1 events	237657	242274	261918	260112	273469	335649	grade 0 events	14117	14060	13863	12563	12433	12714
rejected events	204817	208072	229991	229737	241922	196794		5%	5%	5%	4%	4%	3%
rejected %	86%	85%	87%	88%	88%	58%	grade 1 events	128	142	117	120	129	304
								0%	0%	0%	0%	0%	0%
							grade 2 events	7180	7131	6945	6397	6782	27385
								3%	2%	2%	2%	2%	8%
							grade 3 events	2965	3322	2800	2896	3013	12454
								1%	1%	1%	1%	1%	3%
							grade 4 events	2892	3326	2919	2895	2944	12447
								1%	1%	1%	1%	1%	3%
							grade 5 events	9409	10202	8988	10087	11468	32087
								3%	4%	3%	3%	4%	9%
							grade 6 events	5691	6368	5405	5628	6384	73869
								2%	2%	2%	2%	2%	22%
							grade 7 events	195275	197723	220881	219526	230316	164389
								82%	81%	84%	84%	84%	48%

## 2.2 Compared Parameters

Parameter	Planned	Actual	Parameter	Planned	Actual
Instrument	ACIS	ACIS	Obspar format version number	7	7
Detector	ACIS-012367	ACIS-012367	Obspar file type	PREDICTED	ACTUAL
Grating	NONE	NONE	Obspar update status	NONE	UPDATED
Data mode	VFAINT	VFAINT	Number of optional ACIS chips dropped	0	0
Observation mode	POINTING	POINTING	On-chip summing requested	N	N
[deg] Pointing RA	158.186542	158.1844396815765	Subarray requested	NONE	NONE
[deg] Pointing Dec	57.798329	57.7709752292362	Alternating exposures requested	N	N
[deg] Pointing Roll	237.277661	237.4881235897978	[s] Primary exposure time	0.000000	3.2
[mm] SIM focus pos	-0.782348	-0.7809083437167272			
[mm] SIM defocus	0	0.001439871863259334			
[mm] SIM translation stage pos	-233.592463	-233.5874344608287			
[mm] SIM translation stage offset	0	-0.005018542100998502			
[s] Observation start time (MET)	136671587.184000	136670586.7591			
Observation start date	2002-05-01T20:18:43	2002-05-01T20:03:06			
[s] Observation end time (MET)	136710587.184000	136711214.68575			
Observation end date	2002-05-02T07:08:43	2002-05-02T07:20:14			
Read mode	TIMED	TIMED			

## 2.3 Aspect



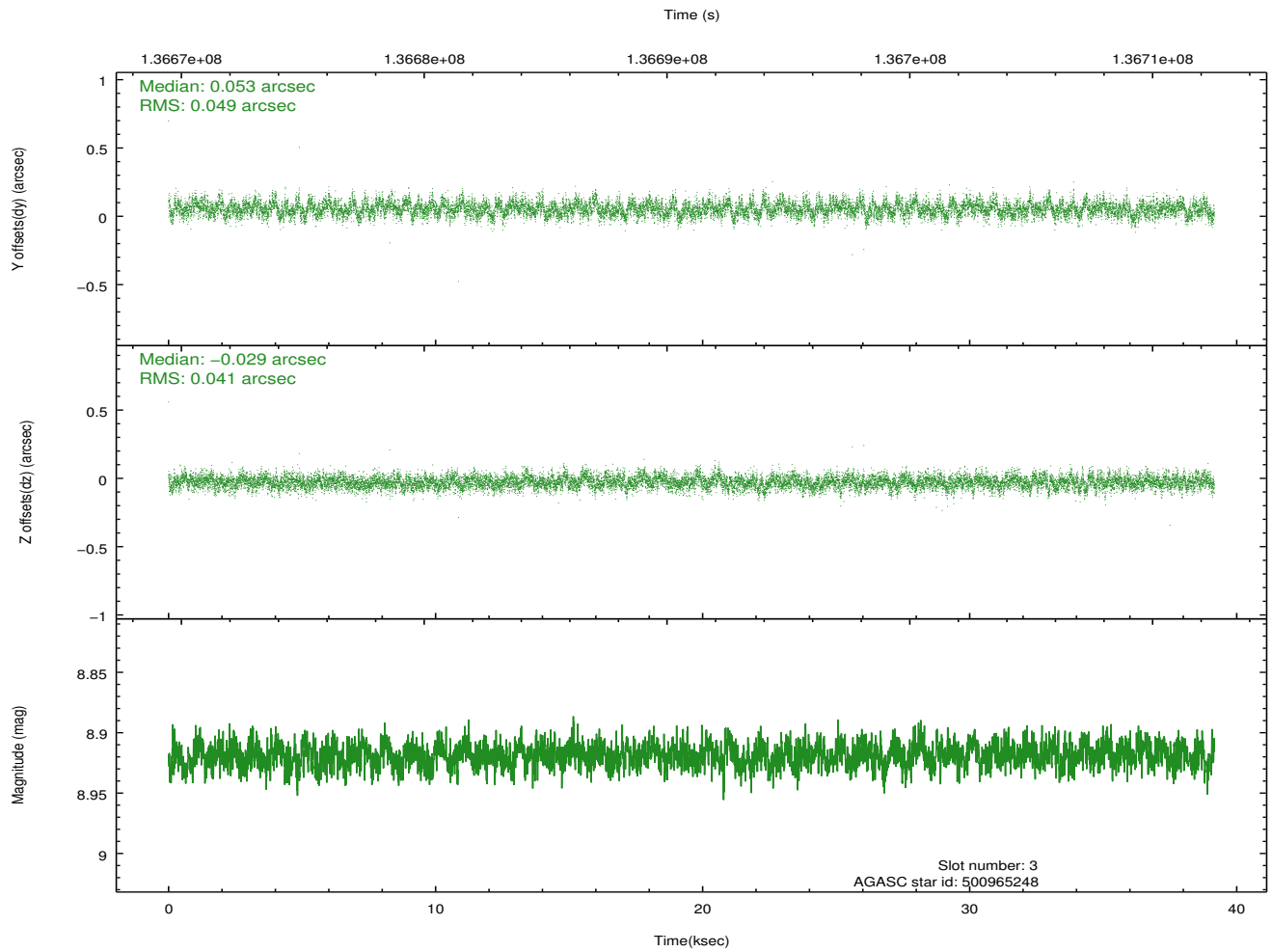
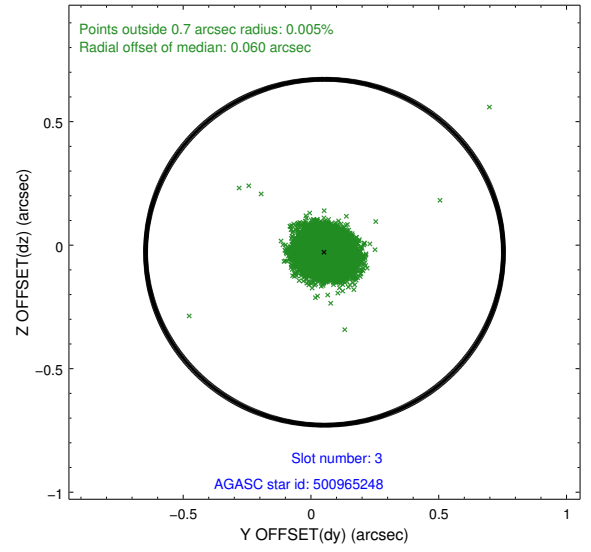
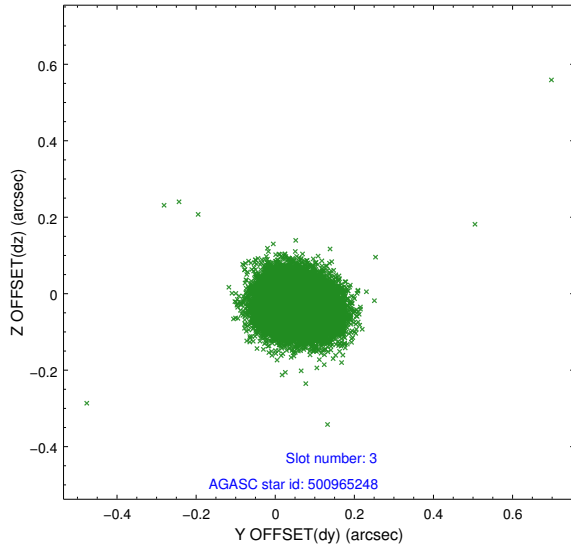


### Slot Statistics

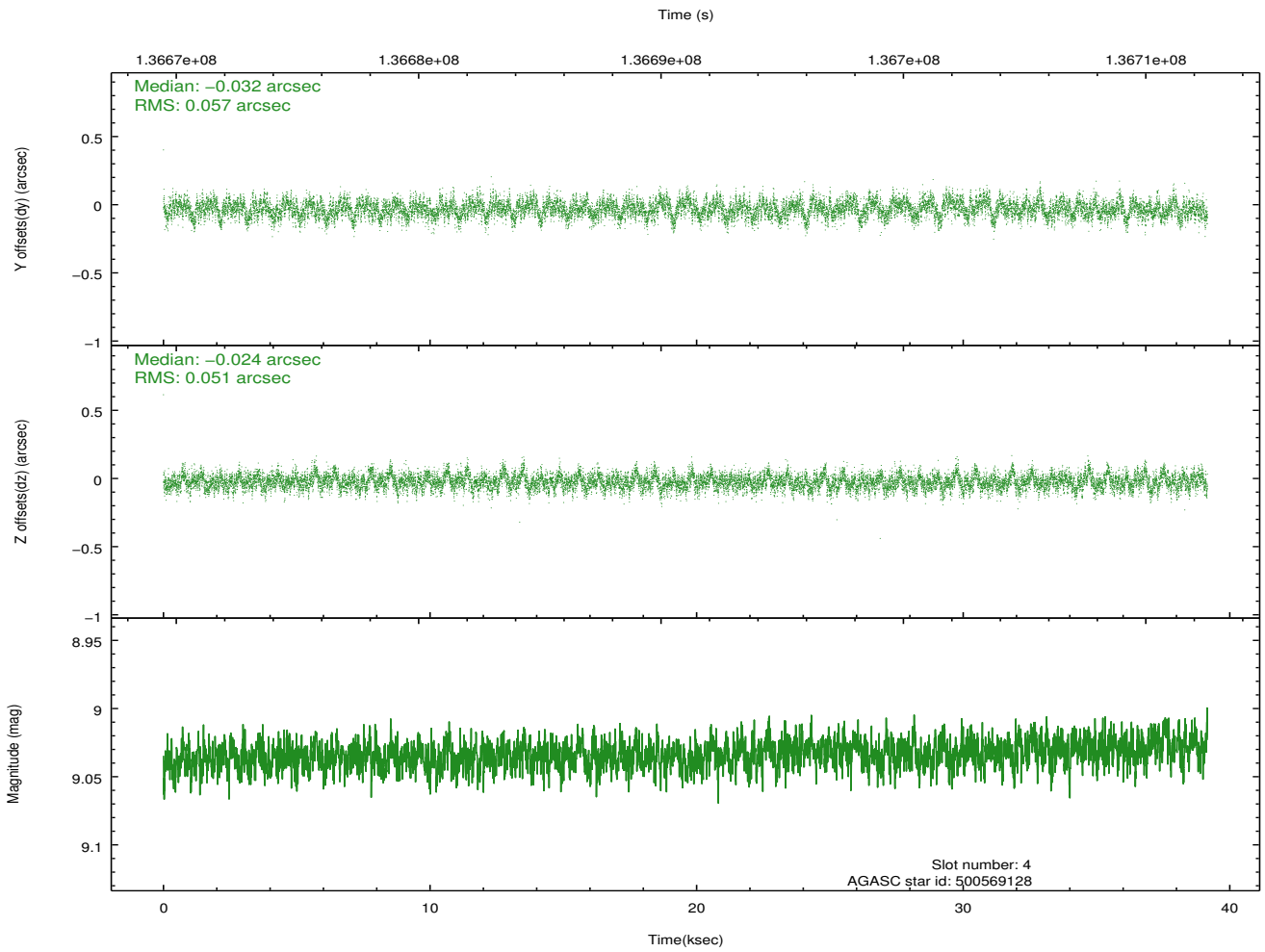
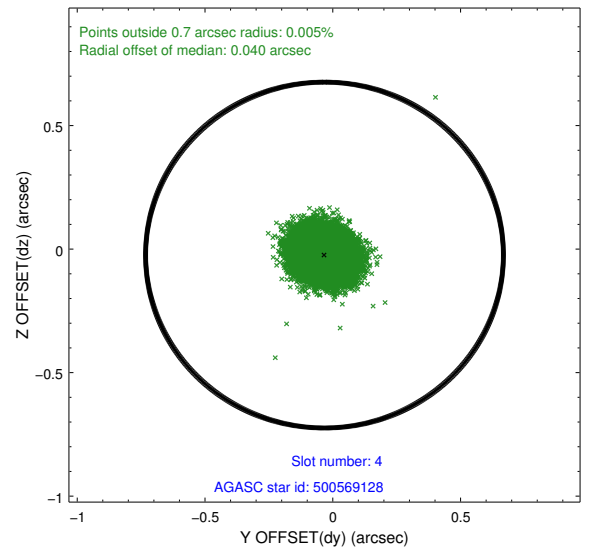
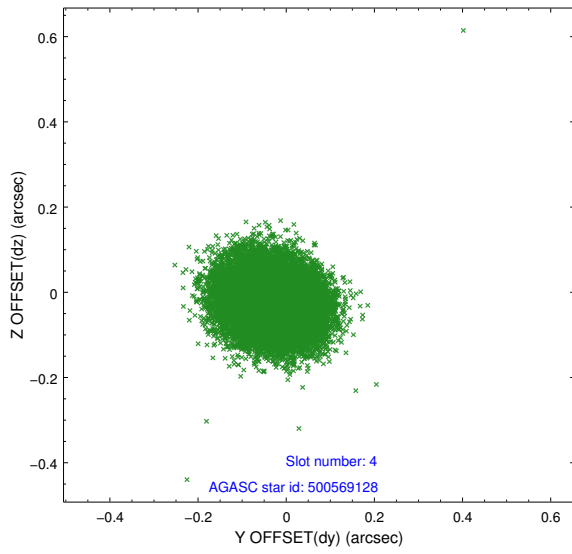
slot	status	id	mag	n_pts	med_dy	med_dz	dr1	dr2	ra	dec	mean_y	mean_z
0	FID	ACIS-I-1	7.24	9553	-0.010	0.038	0.008	0.017	0.000000	0.000000	937.59	-830.79
1	FID	ACIS-I-5	7.24	9547	-0.042	0.048	0.006	0.010	0.000000	0.000000	-1810.50	1066.76
2	FID	ACIS-I-6	7.26	9551	-0.039	-0.015	0.008	0.016	0.000000	0.000000	403.14	1711.18
3	GUIDE	500965248	8.92	19093	0.053	-0.029	0.067	0.109	157.040068	57.653140	1617.28	-1584.49
4	GUIDE	500569128	9.03	19095	-0.032	-0.024	0.082	0.132	157.930103	57.115848	2336.27	906.46
5	GUIDE	500959408	9.51	19090	0.095	-0.077	0.088	0.148	157.361573	57.862425	651.49	-1458.28
6	GUIDE	500961384	9.51	19086	-0.091	0.070	0.107	0.170	159.416101	58.123584	-2267.28	1322.53
7	GUIDE	500962432	9.51	19020	-0.030	0.060	0.106	0.171	158.977500	58.020820	-1497.21	831.67

## 2.4 Star Slots

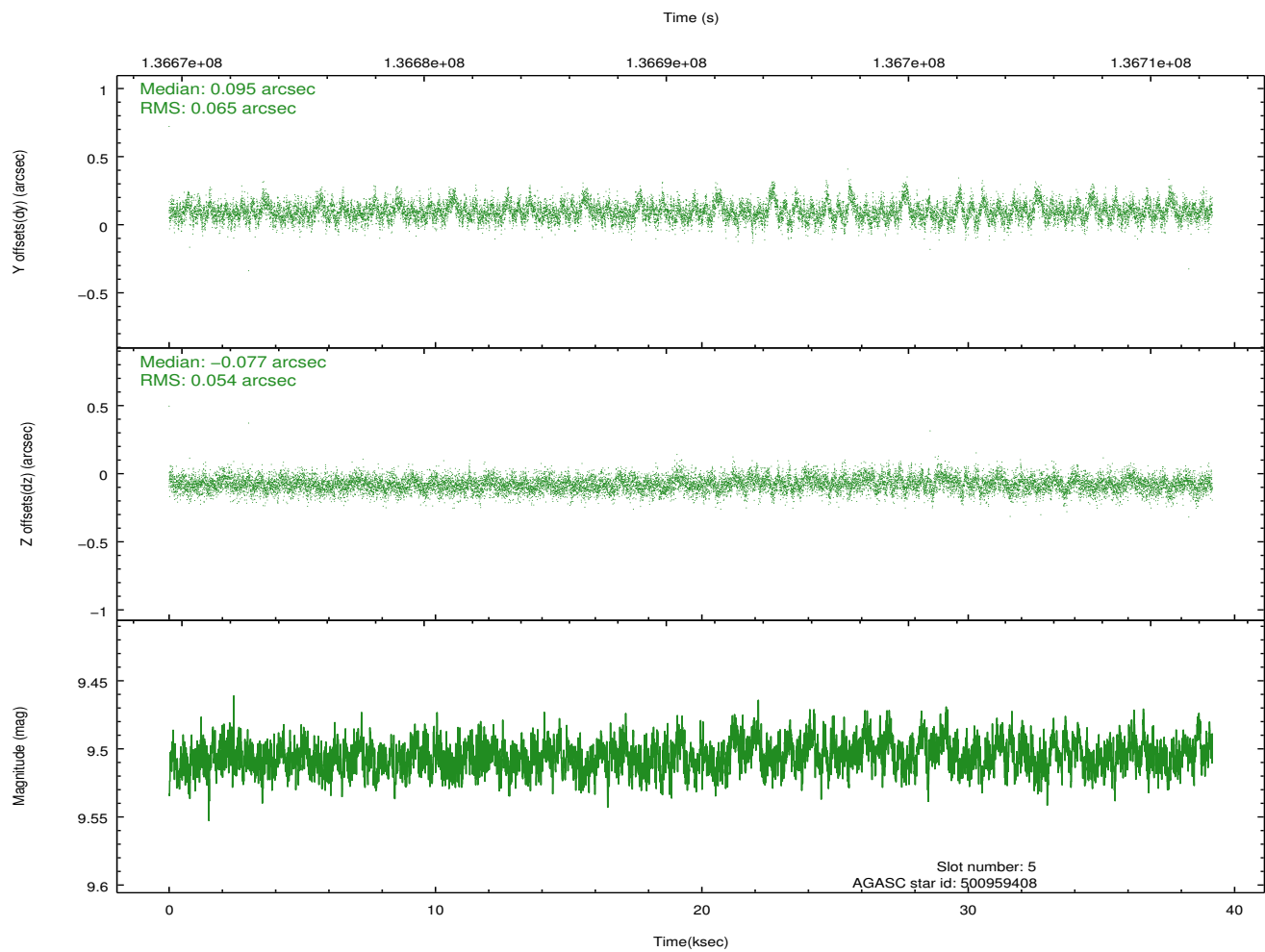
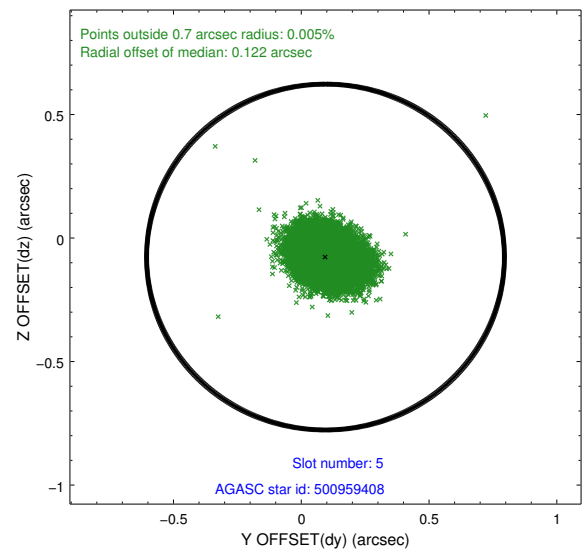
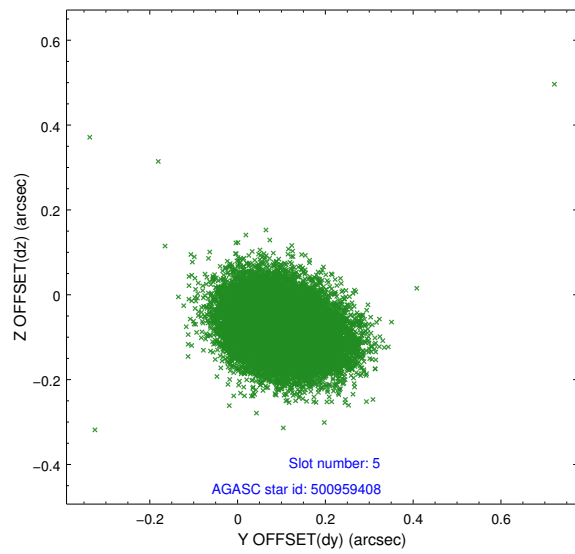
### 2.4.1 Slot 3



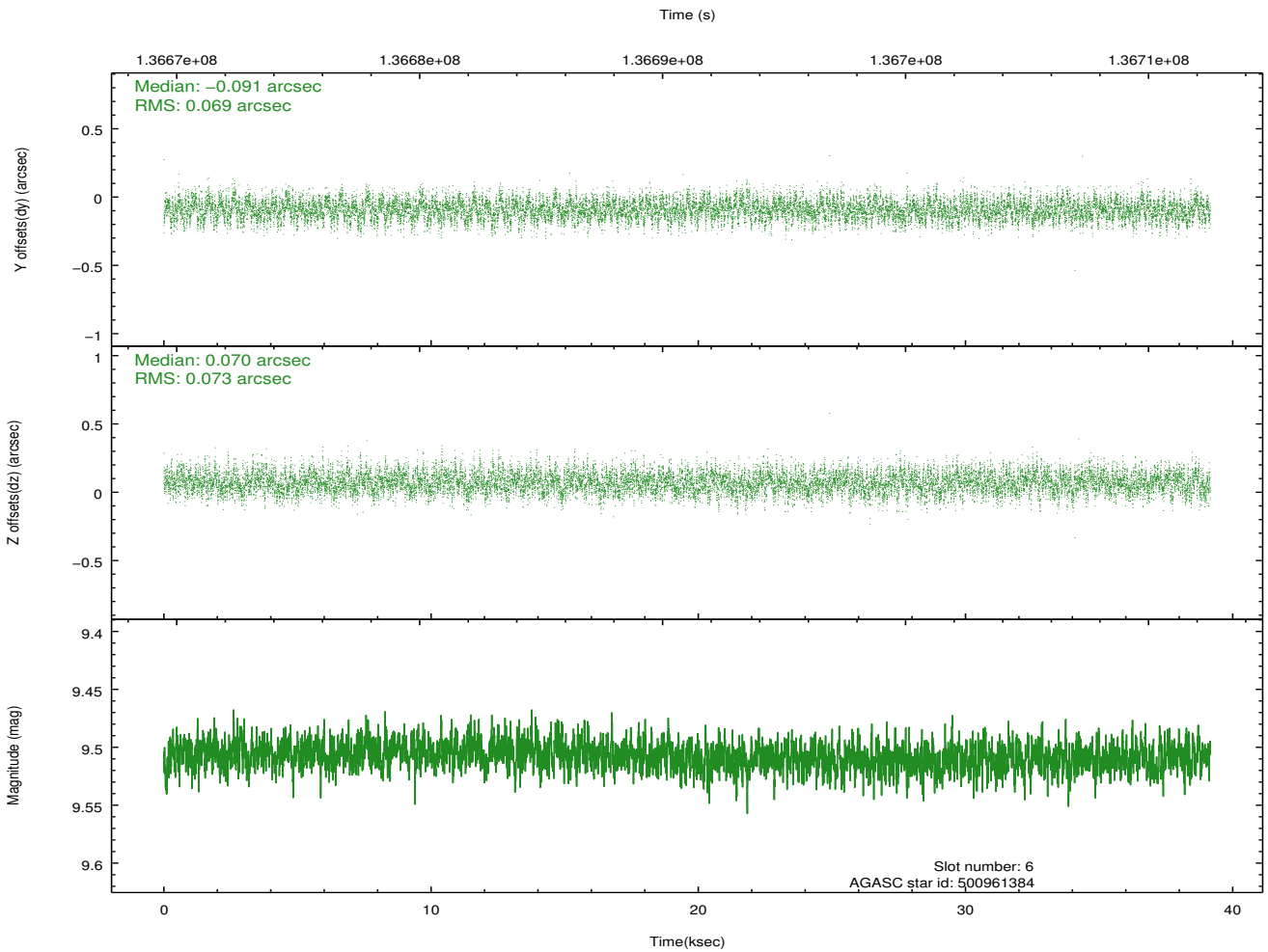
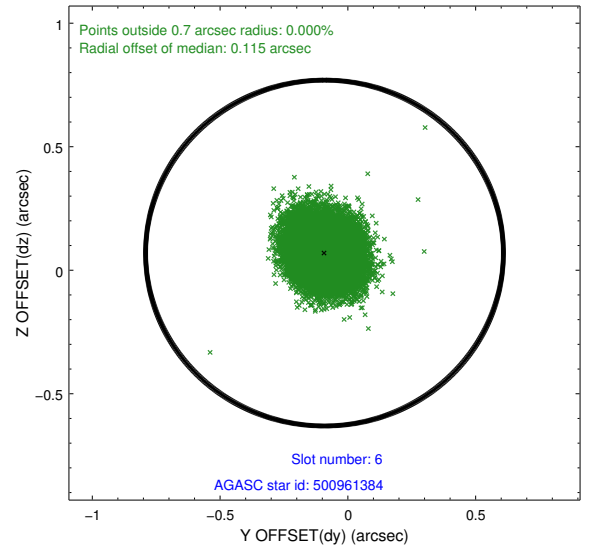
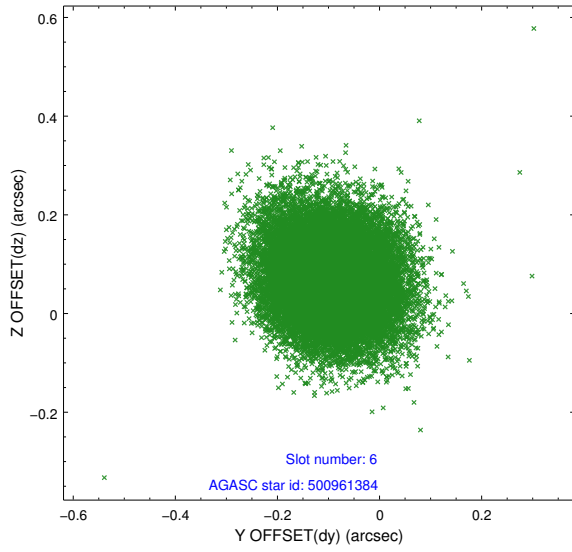
## 2.4.2 Slot 4



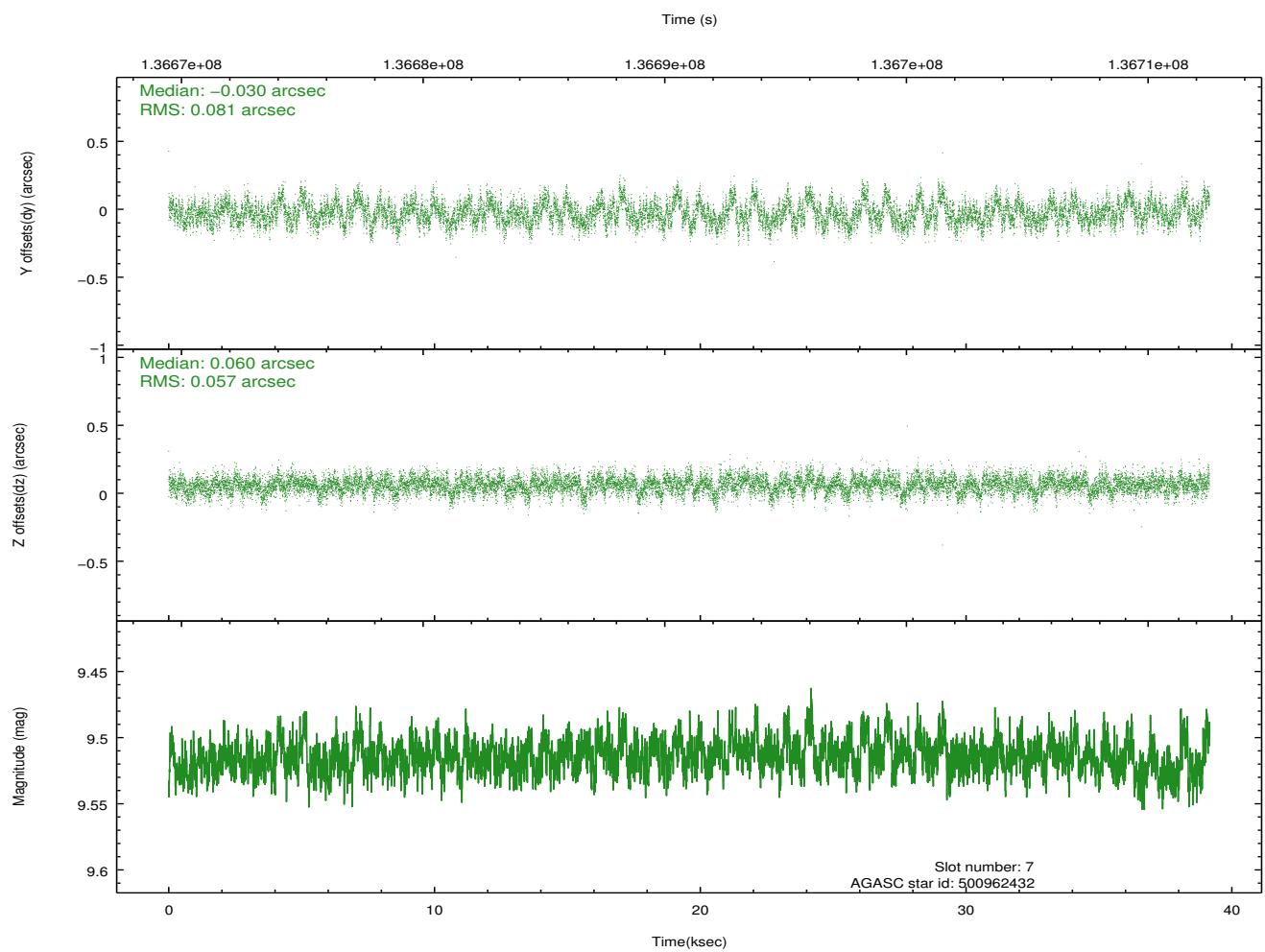
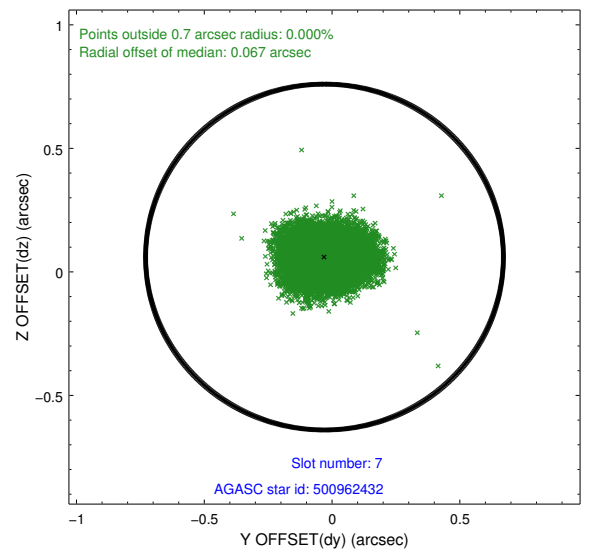
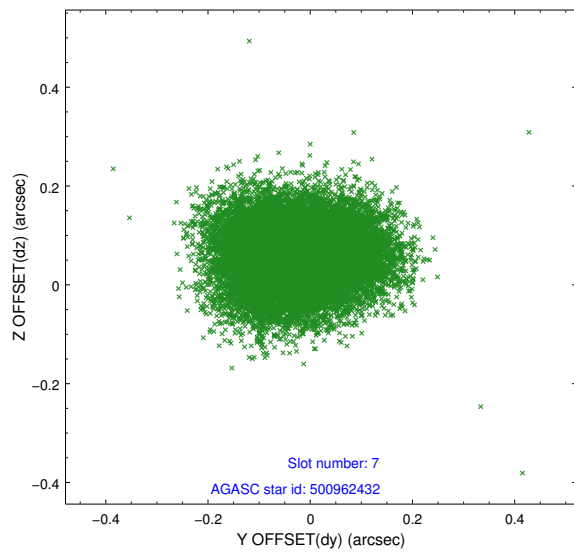
### 2.4.3 Slot 5



### 2.4.4 Slot 6

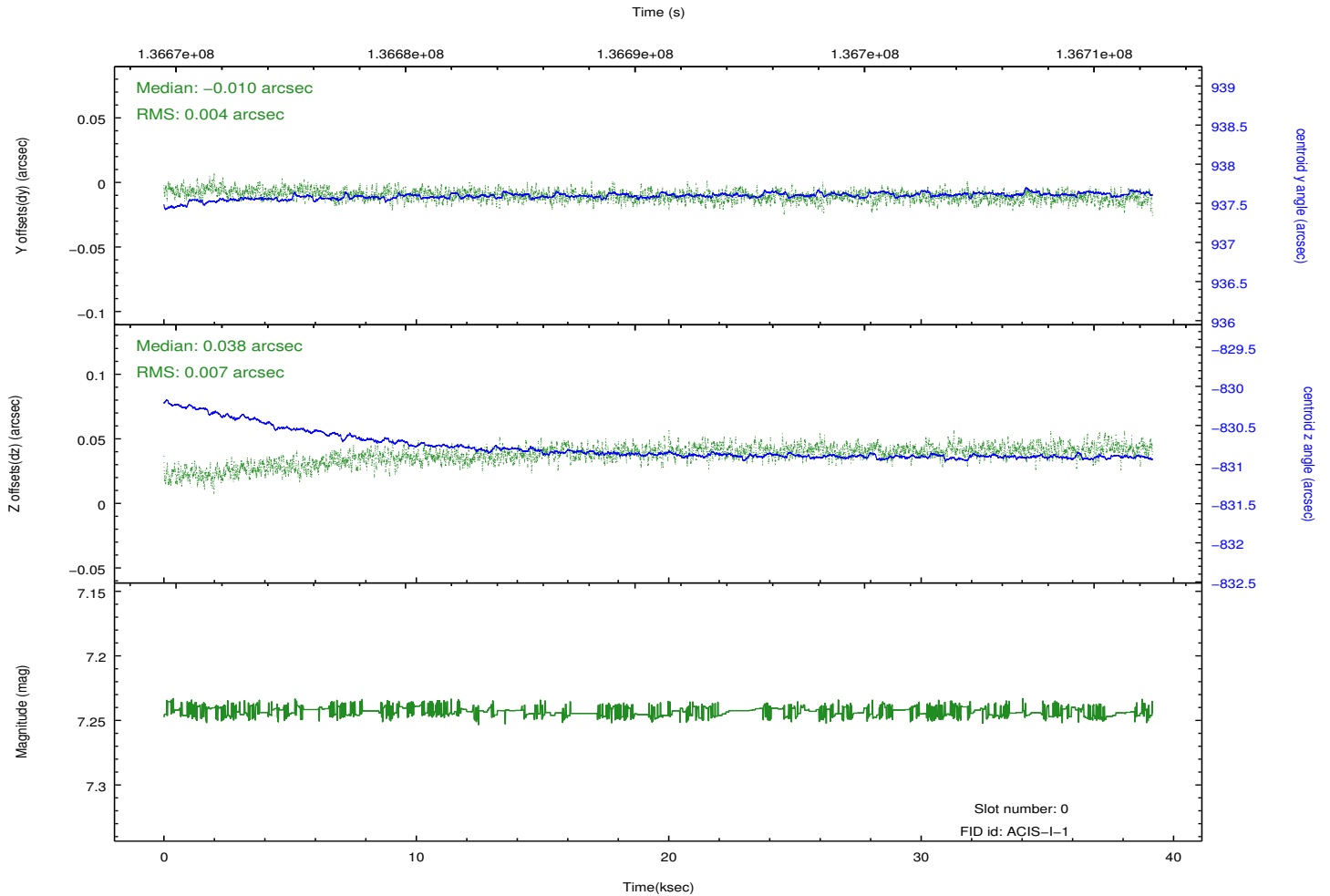
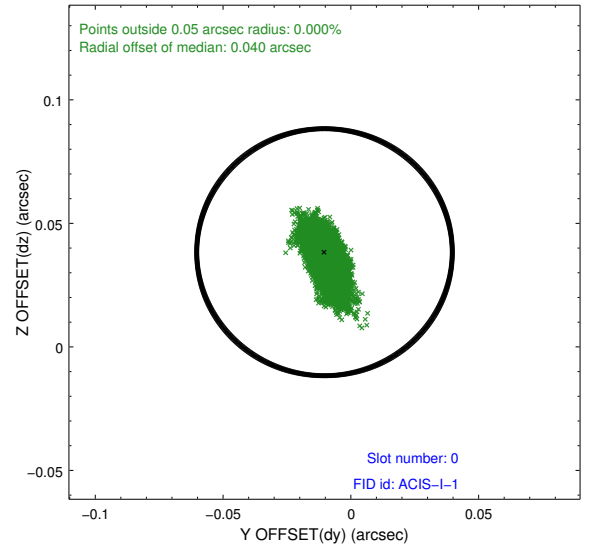
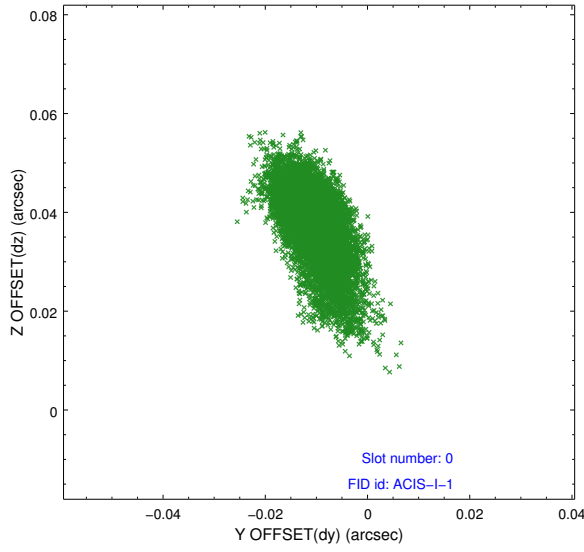


## 2.4.5 Slot 7

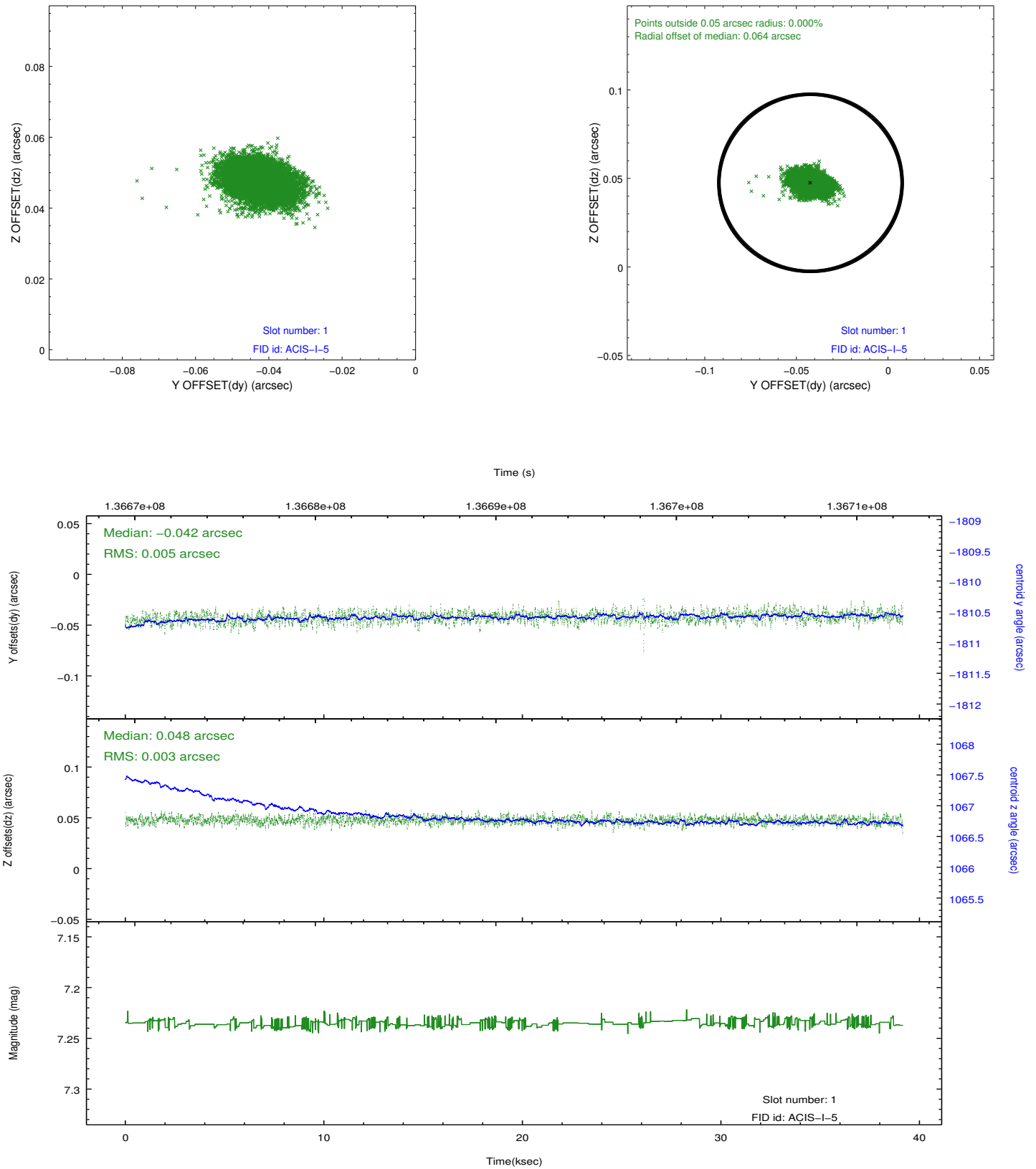


## 2.5 FID Slots

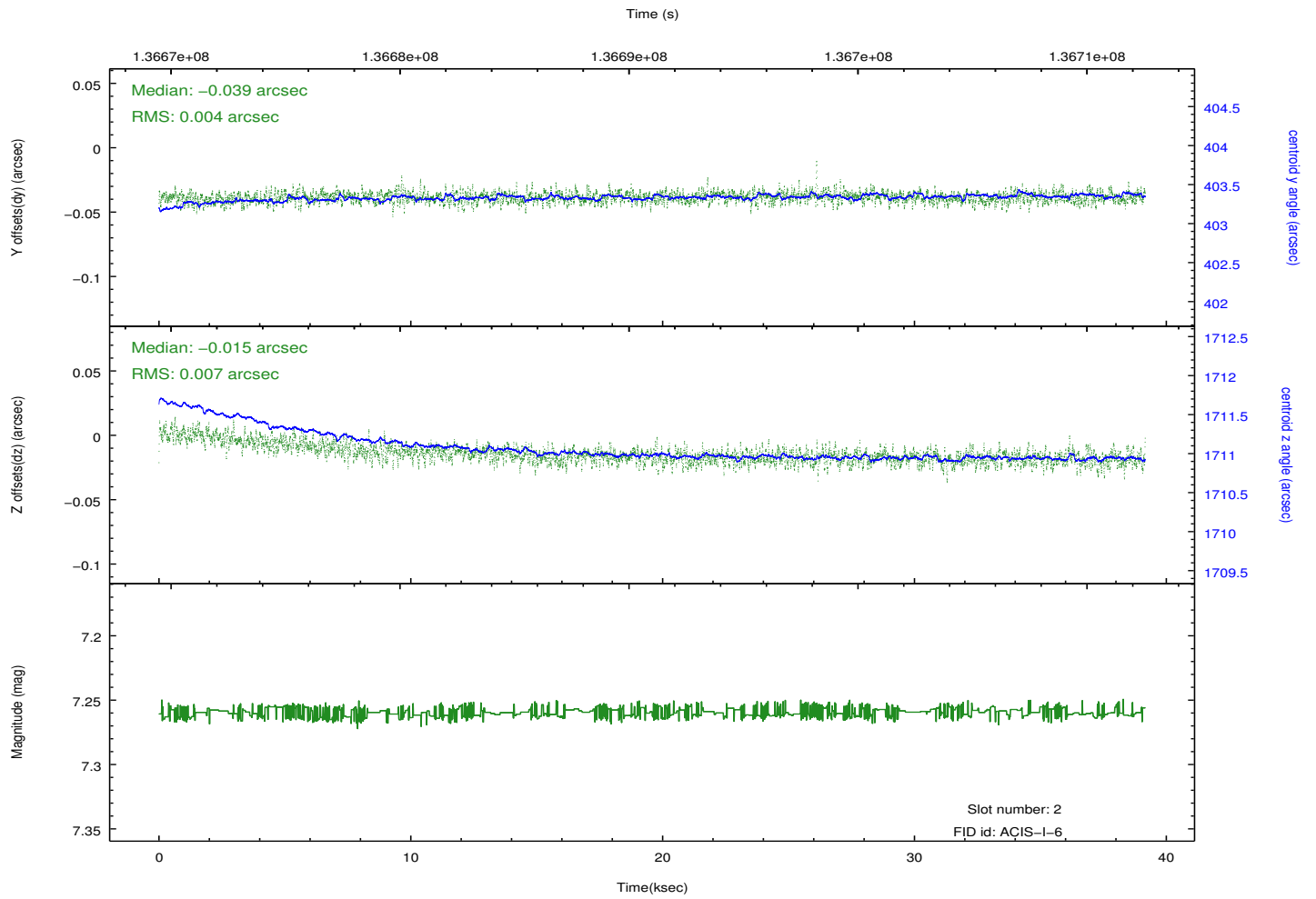
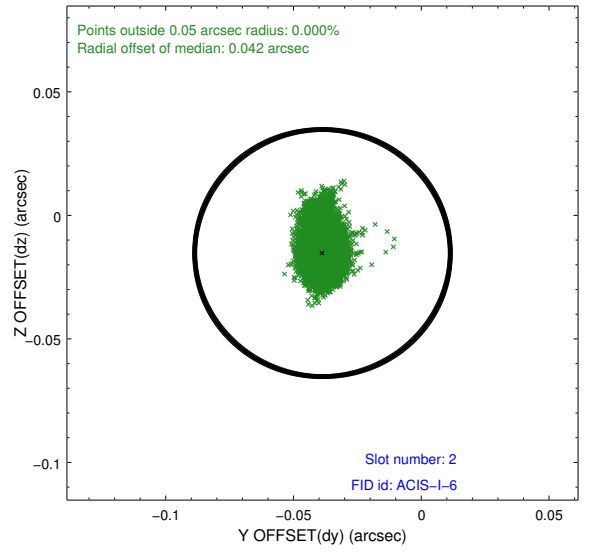
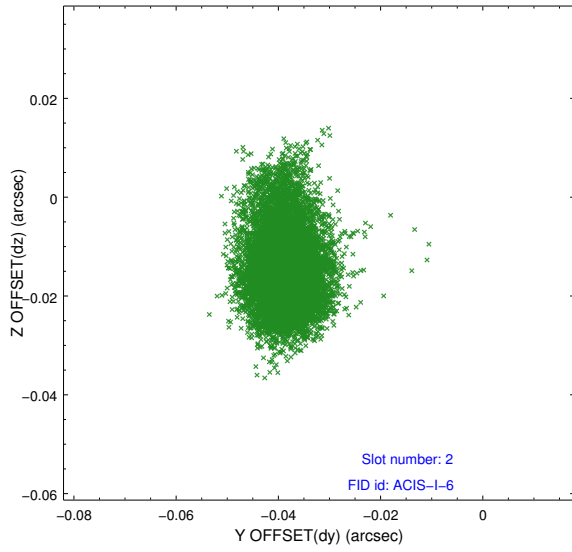
### 2.5.1 Slot 0



## 2.5.2 Slot 1



### 2.5.3 Slot 2



# A Summary

## A.1 Status

V&V Scientist	Beth Sundheim
V&V Date (YYYY-MM-DD)	2012.10.16
V&V Edition	1
V&V Disposition and Status	OK
V&V Charge Time	39.036

## A.2 Comments