

V&V Reference Report

L2 ASCDS Version : 8.4.5

Observation 3544 - L2 Version 3
Chandra X-Ray Center

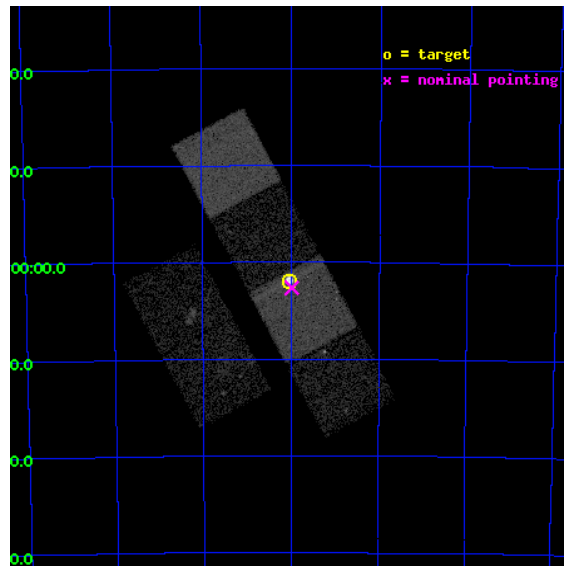
L2 Processing Date : Nov 3 2012

Contents

1	Front	2
2	OBI	3
2.1	OBI	3
2.1.1	Images	3
2.1.2	Bias	3
2.1.3	Parameters	4
2.1.4	Events	4
2.2	Compared Parameters	5
2.3	Aspect	6
2.4	Star Slots	9
2.4.1	Slot 3	9
2.4.2	Slot 4	10
2.4.3	Slot 5	11
2.4.4	Slot 6	12
2.4.5	Slot 7	13
2.5	FID Slots	14
2.5.1	Slot 0	14
2.5.2	Slot 1	15
2.5.3	Slot 2	16
A	Summary	17
A.1	Status	17
A.2	Comments	17

1 Front

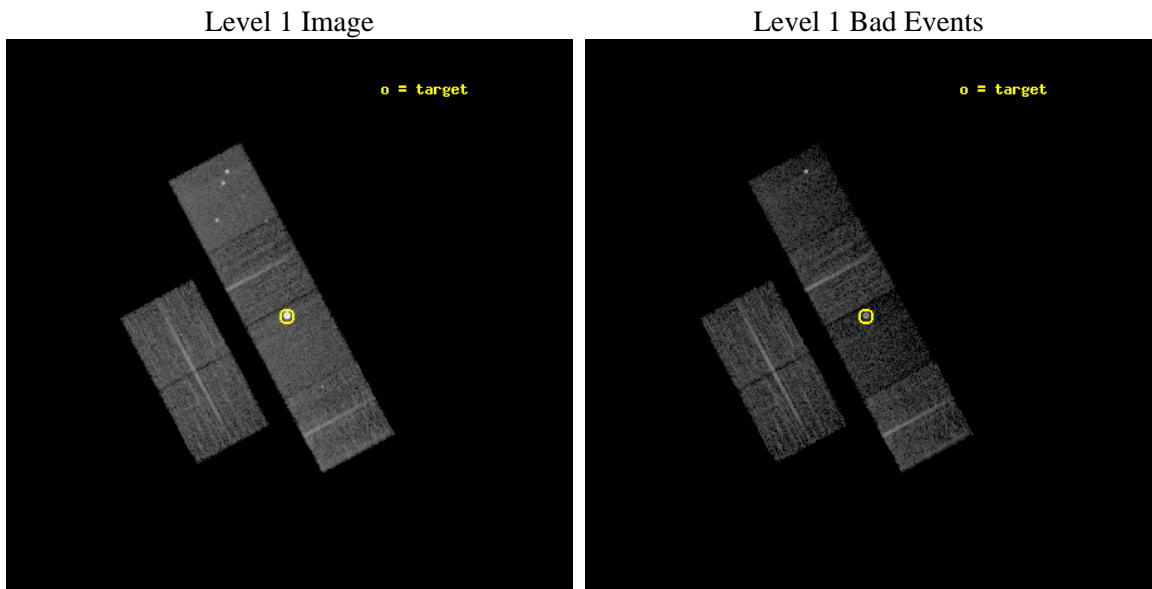
seq_num	590299	Sequence number
obs_id	3544	Observation id
title	AO4B ACIS-S CALIBRATION OBSERVATIONS OF E0102-72	Proposal title
observer	Dr. CXC Calibration	Principal investigator
object	E0102-72[S3,-120,1,0,0]	Source name
dtycycle	0	
cycle	P	events from which exps? Prim/Second/Both
ra_targ	16.01	Observer's specified target RA [deg]
dec_targ	-72.032028	Observer's specified target Dec [deg]
ra_nom	15.995206173805	Nominal RA [deg]
dec_nom	-72.043990797533	Nominal Dec [deg]
roll_nom	61.849733219373	Nominal Roll [deg]
revision	3	Processing version of data
ontime	7961.5999703407	Sum of GTIs [s]
livetime	7860.7853976163	Livetime [s]
ontime2	7961.5999703407	Sum of GTIs [s]
ontime3	7961.5999703407	Sum of GTIs [s]
ontime5	7961.5999703407	Sum of GTIs [s]
ontime6	7961.5999703407	Sum of GTIs [s]
ontime7	7961.5999703407	Sum of GTIs [s]
ontime8	7961.5999703407	Sum of GTIs [s]
l2events	111655	Number of level 2 events



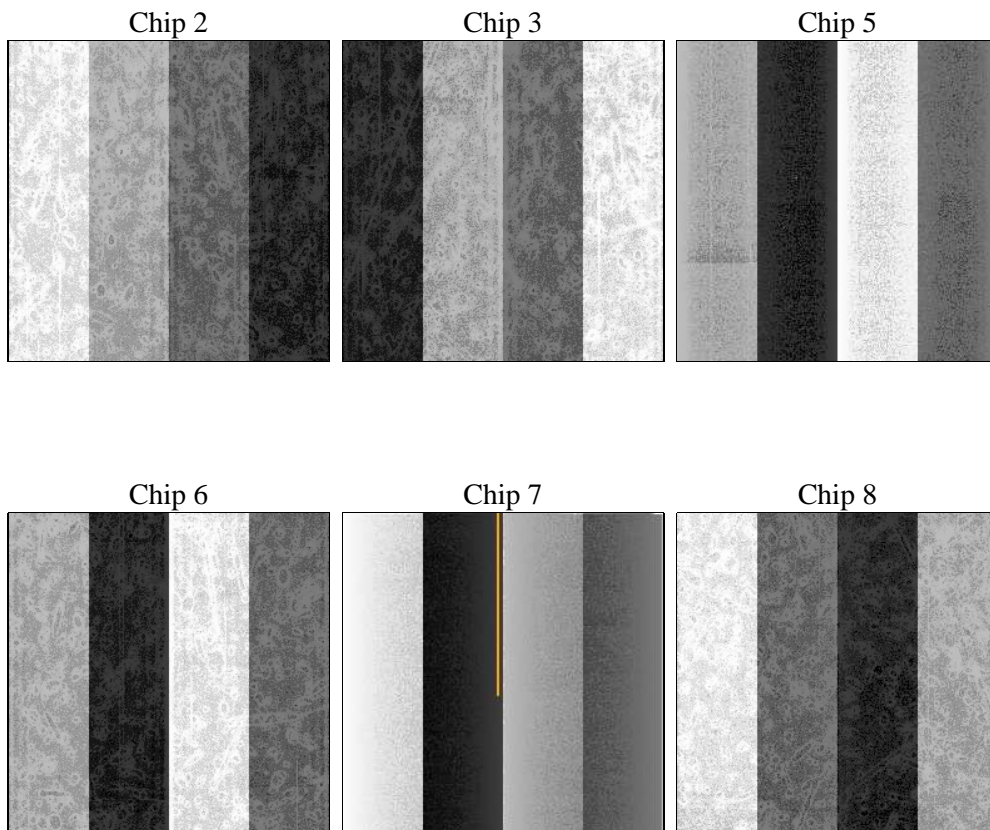
2 OBI

2.1 OBI

2.1.1 Images



2.1.2 Bias



2.1.3 Parameters

obi_num	0	Obi number	sched_exp_time	8000.000000	[s] Scheduled observation exposure time
ascdsver	8.4.5	Processing system revision	ontime	7961.5999703407	Sum of GTIs [s]
caldbver	4.5.2	 	ontime2	7961.5999703407	Sum of GTIs [s]
date	2012-11-03T14:30:17	Date and time of file creation	ontime3	7961.5999703407	Sum of GTIs [s]
revision	3	Processing version of data	ontime5	7961.5999703407	Sum of GTIs [s]
			ontime6	7961.5999703407	Sum of GTIs [s]
			ontime7	7961.5999703407	Sum of GTIs [s]
			ontime8	7961.5999703407	Sum of GTIs [s]
			l1events	309232	Number of level 1 events

2.1.4 Events

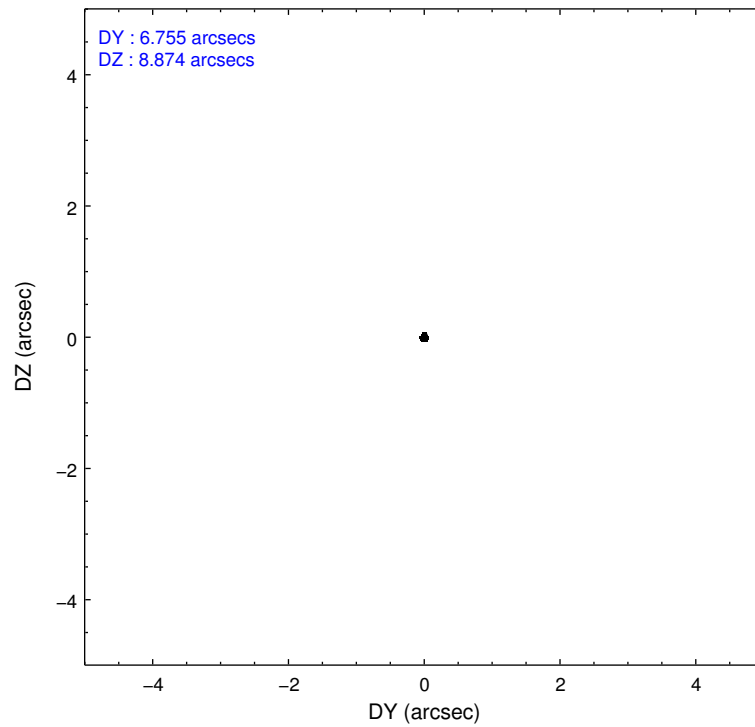
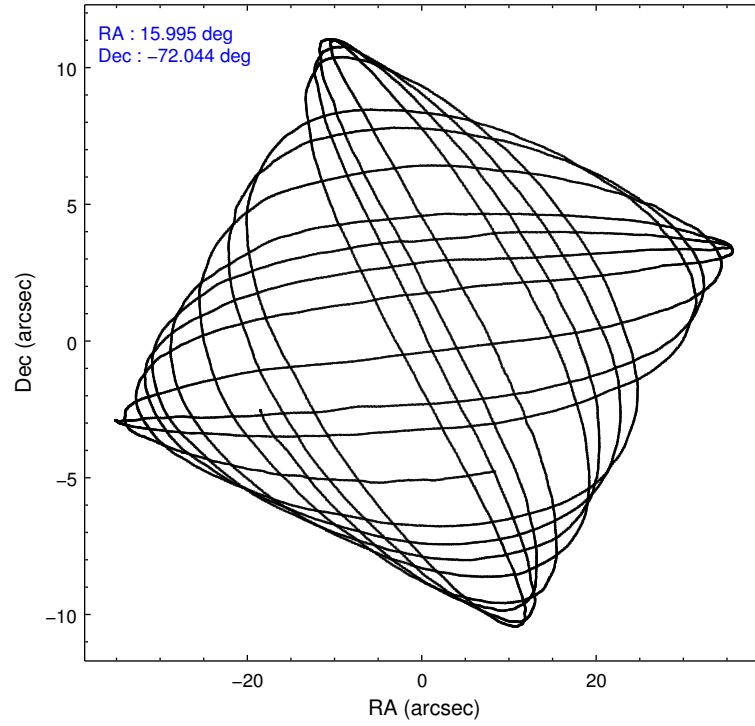
	ccd 2	ccd 3	ccd 5	ccd 6	ccd 7	ccd 8
level 1 events	42858	37851	49507	37462	94976	46578
rejected events	38777	33887	22813	33347	19953	35803
rejected %	90%	89%	46%	89%	21%	76%

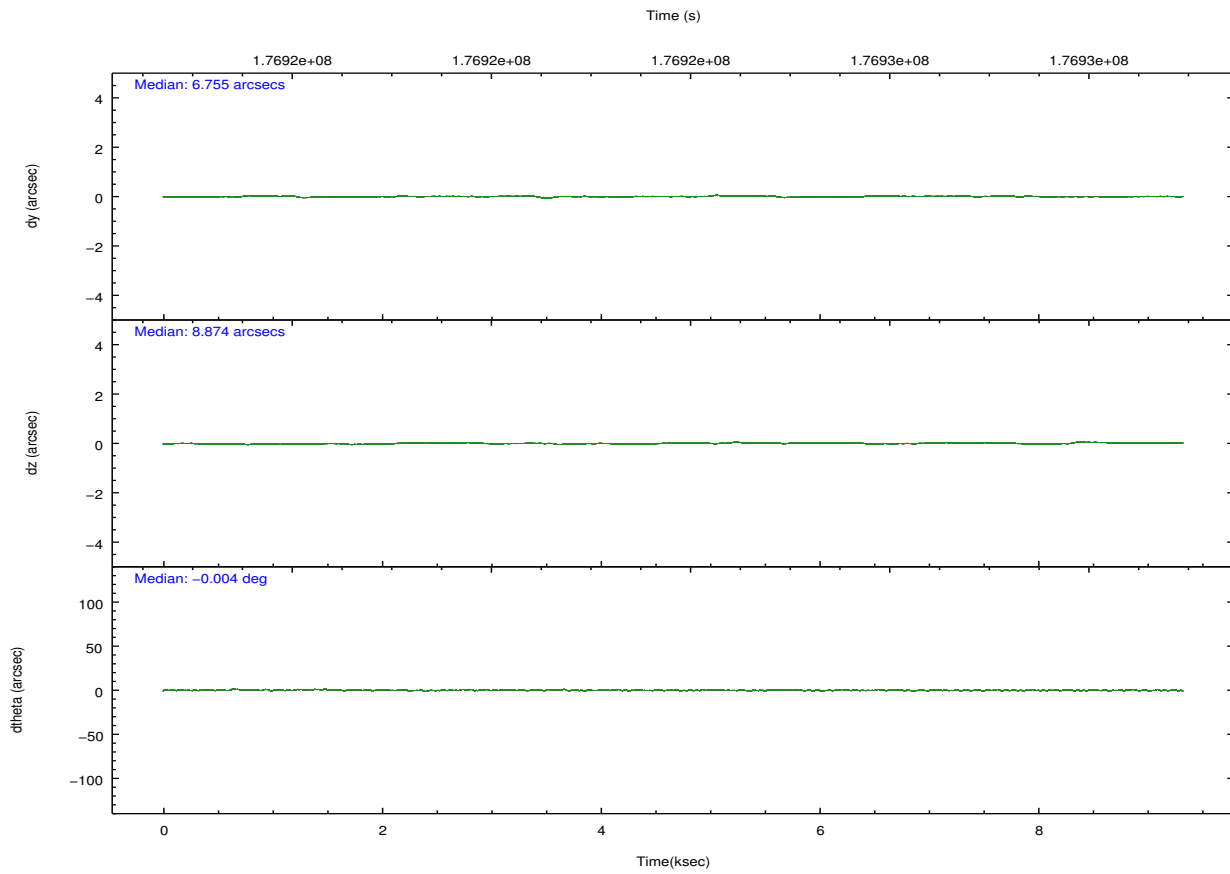
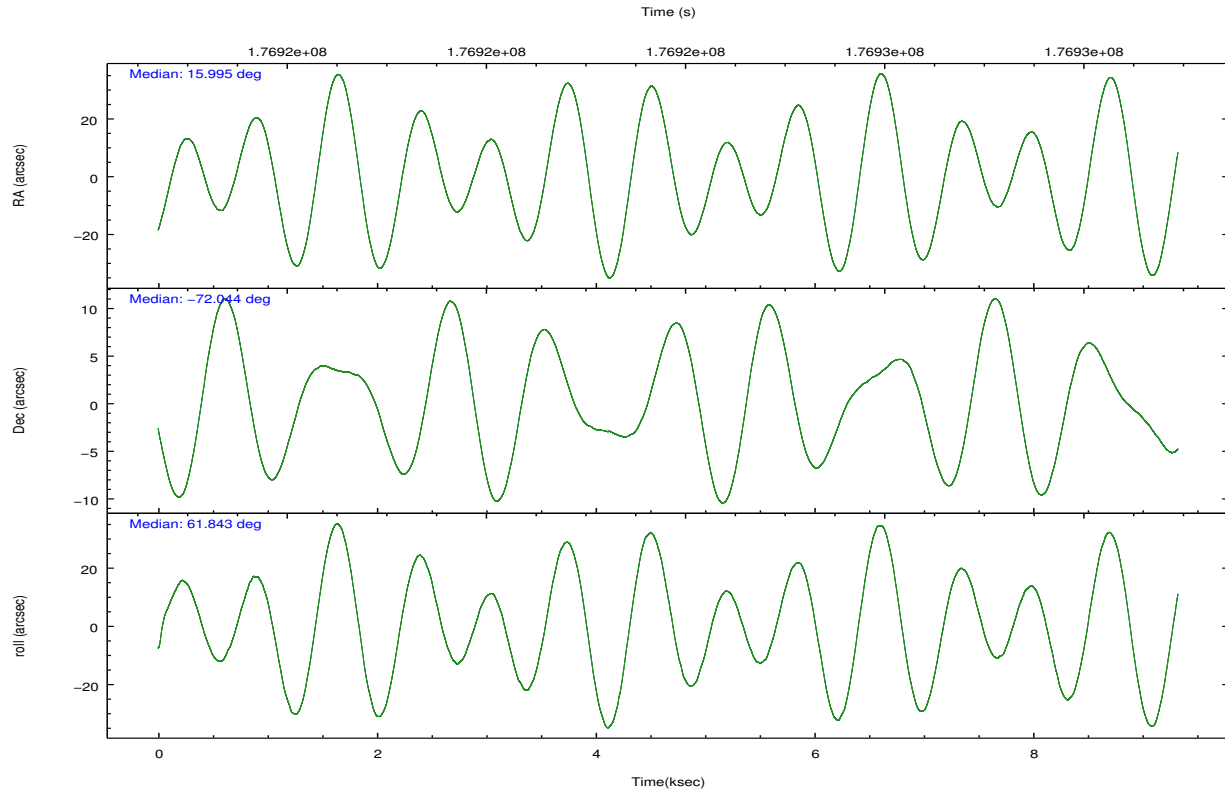
	ccd 2	ccd 3	ccd 5	ccd 6	ccd 7	ccd 8
grade 0 events	1680	1722	4564	1655	19364	3377
	3%	4%	9%	4%	20%	7%
grade 1 events	25	19	312	12	353	31
	0%	0%	0%	0%	0%	0%
grade 2 events	915	749	7453	830	19871	2373
	2%	1%	15%	2%	20%	5%
grade 3 events	426	452	1325	438	8865	1160
	0%	1%	2%	1%	9%	2%
grade 4 events	440	418	1155	458	8644	1175
	1%	1%	2%	1%	9%	2%
grade 5 events	1137	1220	4563	1367	5048	1899
	2%	3%	9%	3%	5%	4%
grade 6 events	621	627	12206	736	18318	2693
	1%	1%	24%	1%	19%	5%
grade 7 events	37614	32644	17929	31966	14513	33870
	87%	86%	36%	85%	15%	72%

2.2 Compared Parameters

Parameter	Planned	Actual	Parameter	Planned	Actual
Instrument	ACIS	ACIS	Obspar format version number	7	7
Detector	ACIS-235678	ACIS-235678	Obspar file type	PREDICTED	ACTUAL
Grating	NONE	NONE	Obspar update status	NONE	UPDATED
Data mode	VFAINT	VFAINT	Number of optional ACIS chips dropped	0	0
Observation mode	POINTING	POINTING	On-chip summing requested	N	N
[deg] Pointing RA	15.999375	15.99520617380545	Subarray requested	NONE	NONE
[deg] Pointing Dec	-72.071147	-72.04399079753266	Alternating exposures requested	N	N
[deg] Pointing Roll	61.697073	61.84973321937269	[s] Primary exposure time	0.000000	3.2
[s] Window start time (MET)	174614464.184000	174614464.184000			
[s] Window stop time (MET)	177292864.184000	177292864.184000			
[mm] SIM focus pos	-0.684267	-0.6828225247311905			
[mm] SIM defocus	0	0.001444936568705701			
[mm] SIM translation stage pos	-190.132523	-190.1425803651734			
[mm] SIM translation stage offset	0	0.01005778216563158			
[s] Observation start time (MET)	176920485.184000	176918955.42667			
Observation start date	2003-08-10T16:33:41	2003-08-10T16:09:15			
[s] Observation end time (MET)	176928485.184000	176929441.17712			
Observation end date	2003-08-10T18:47:01	2003-08-10T19:04:01			
Read mode	TIMED	TIMED			

2.3 Aspect





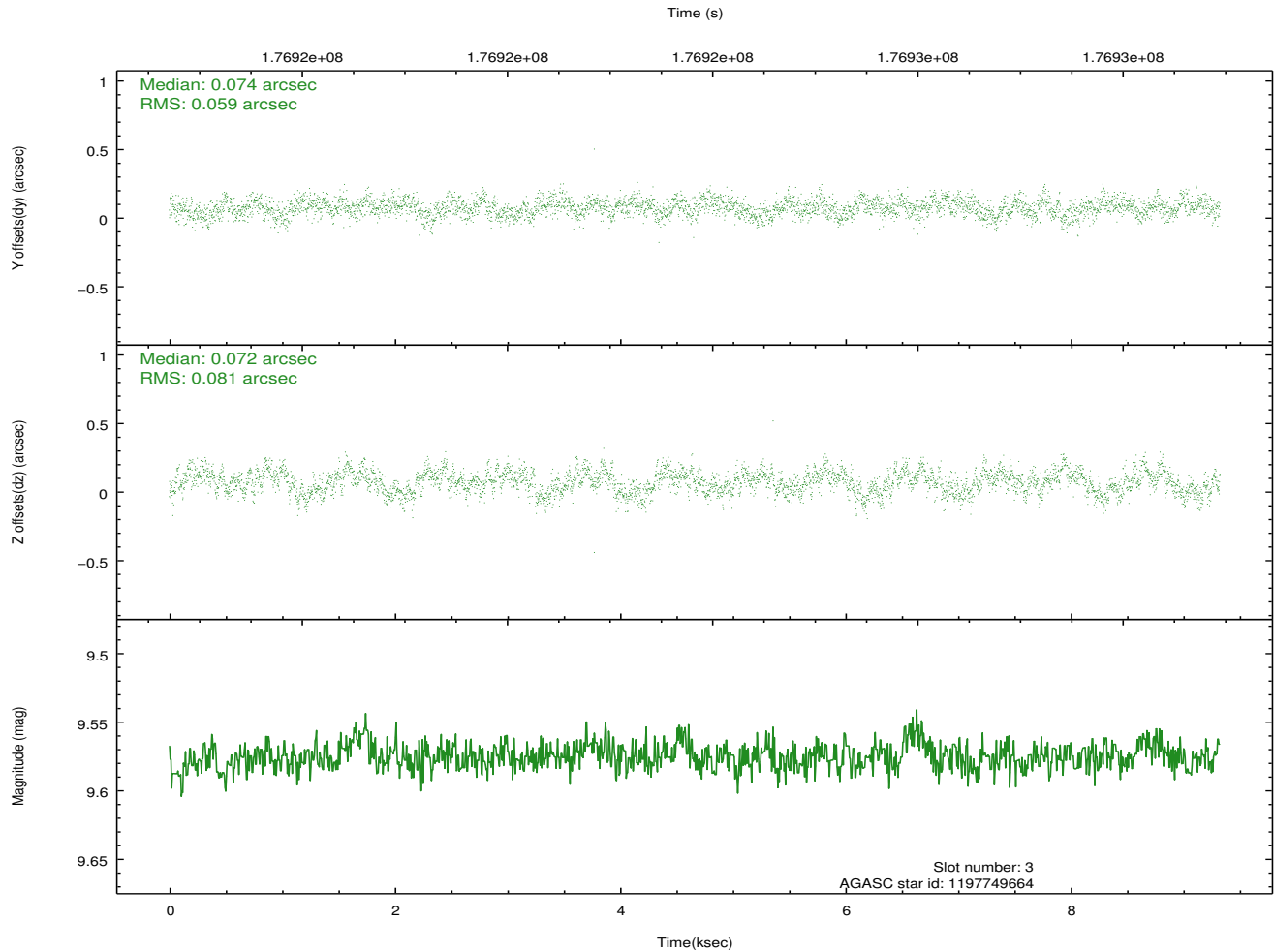
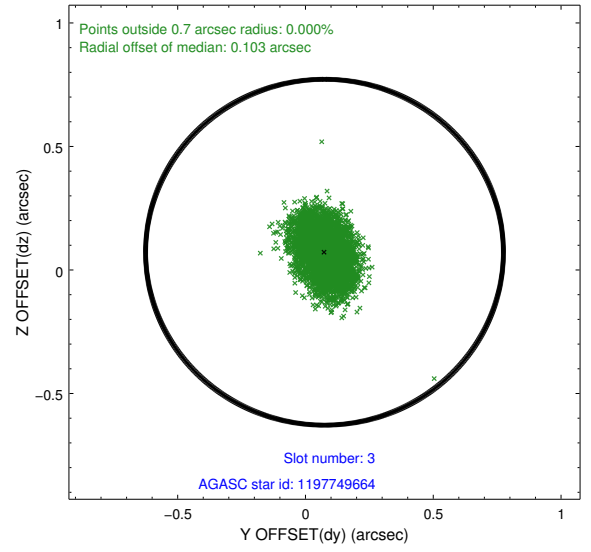
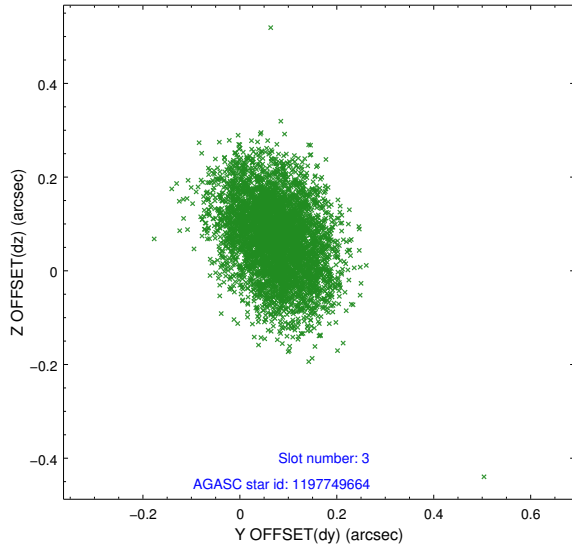
Slot Statistics

slot	status	id	mag	n_pts	med_dy	med_dz	dr1	dr2	ra	dec	mean_y	mean_z
0	FID	ACIS-S-2	7.09	2275	-0.034	-0.041	0.007	0.011	0.000000	0.000000	-759.53	-1730.08
1	FID	ACIS-S-4	7.20	2275	0.066	0.027	0.005	0.010	0.000000	0.000000	2153.58	177.87
2	FID	ACIS-S-5	7.22	2275	-0.063	0.023	0.007	0.011	0.000000	0.000000	-1811.66	172.20
3	GUIDE	1197749664	9.58	4548	0.074	0.072	0.106	0.172	15.809015	-72.366369	-1033.88	-321.45
4	GUIDE	1197750936	7.56	4549	-0.159	-0.040	0.053	0.085	15.387940	-71.549550	1319.63	1501.86
5	GUIDE	1197884712	8.30	4546	0.047	0.005	0.064	0.100	16.087398	-72.252690	-528.89	-394.78
6	GUIDE	1197885104	9.36	4547	-0.002	0.016	0.096	0.151	17.845067	-72.189368	561.60	-2005.75
7	GUIDE	1197750824	10.09	4545	0.038	-0.044	0.154	0.239	14.791487	-71.393477	1478.30	2371.28

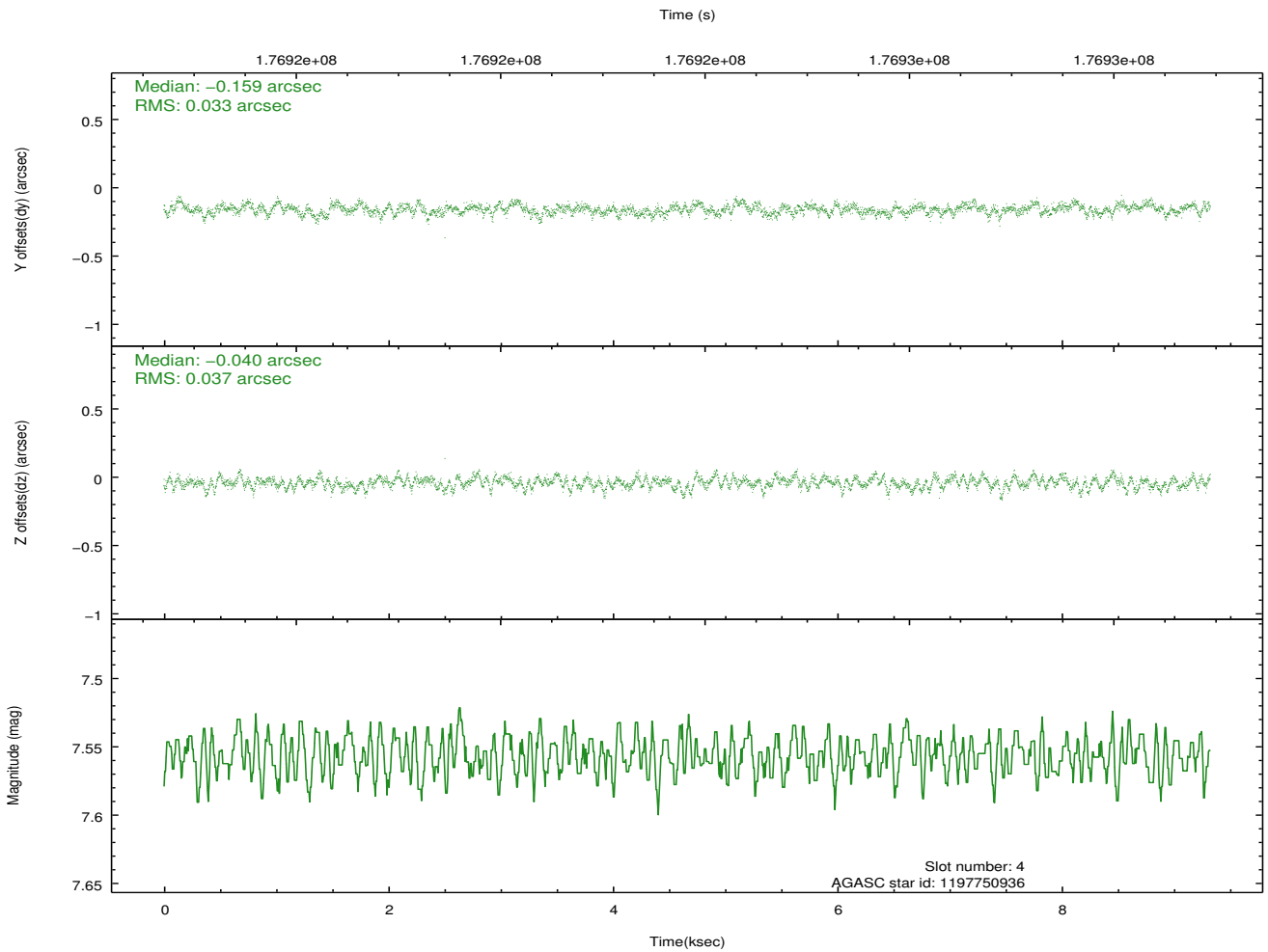
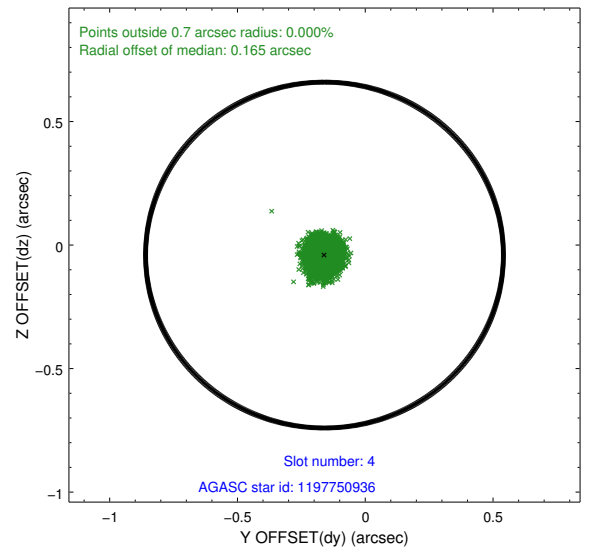
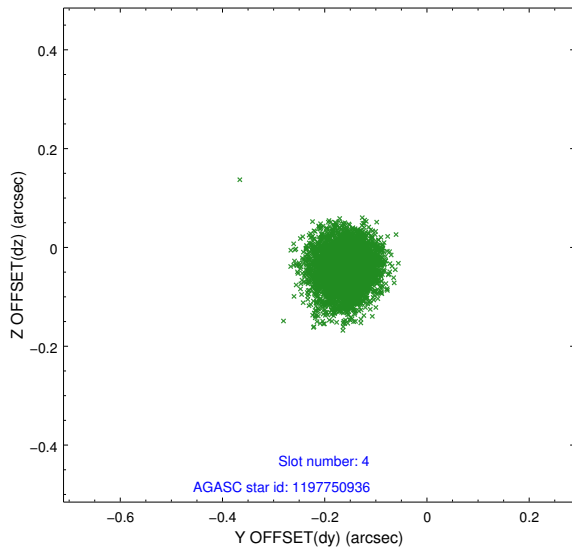
∞

2.4 Star Slots

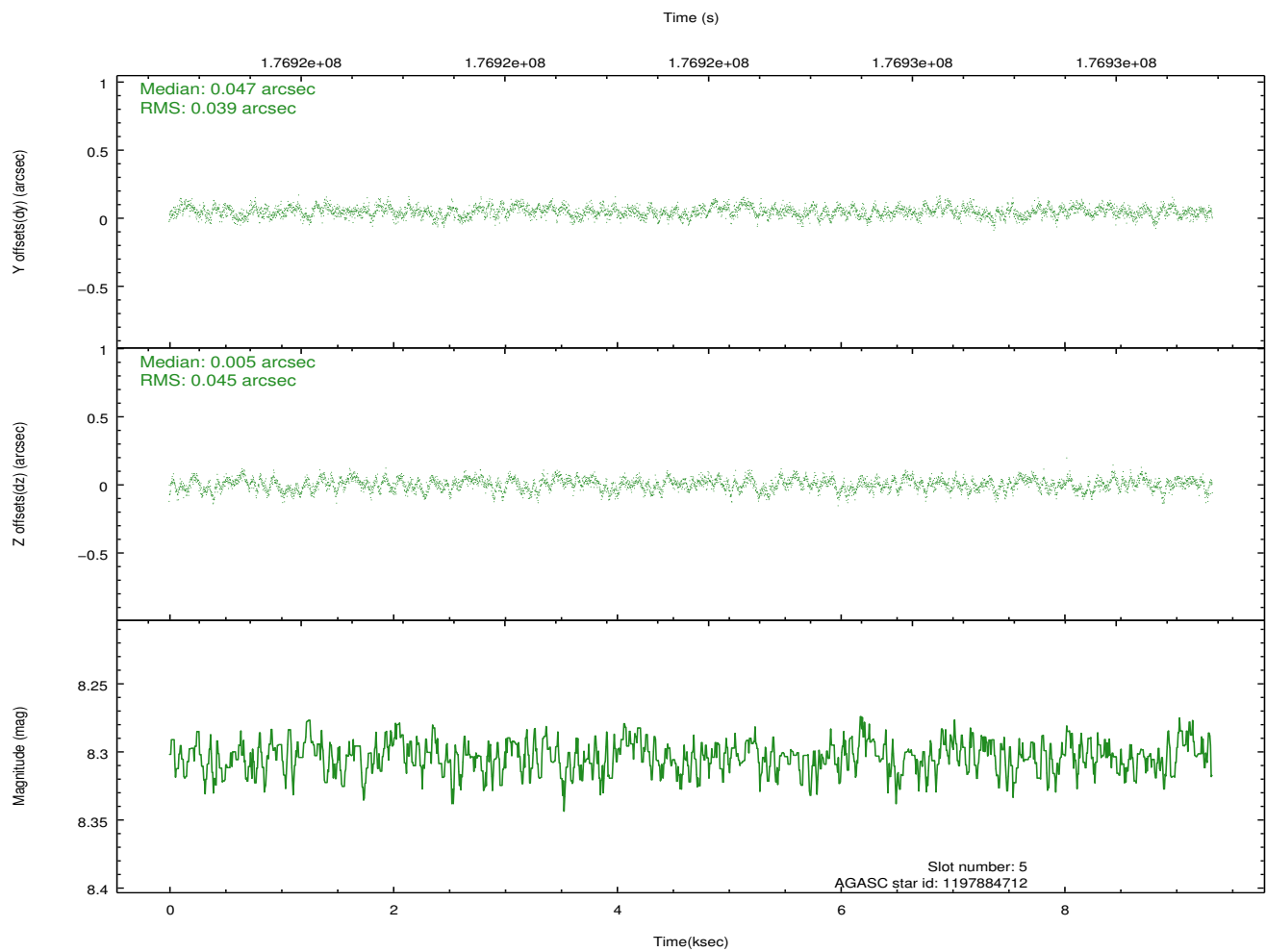
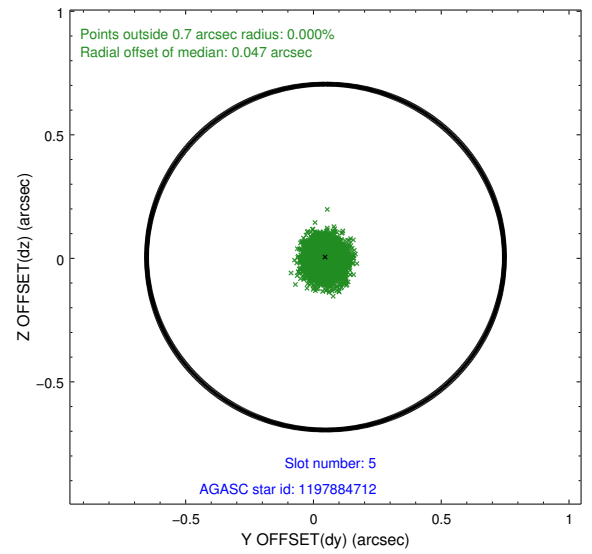
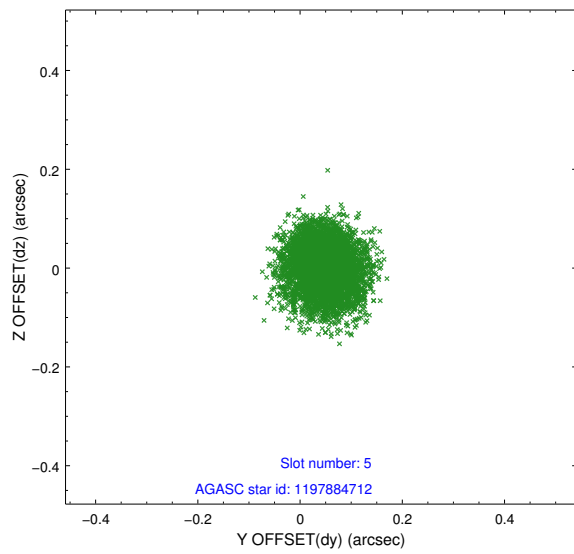
2.4.1 Slot 3



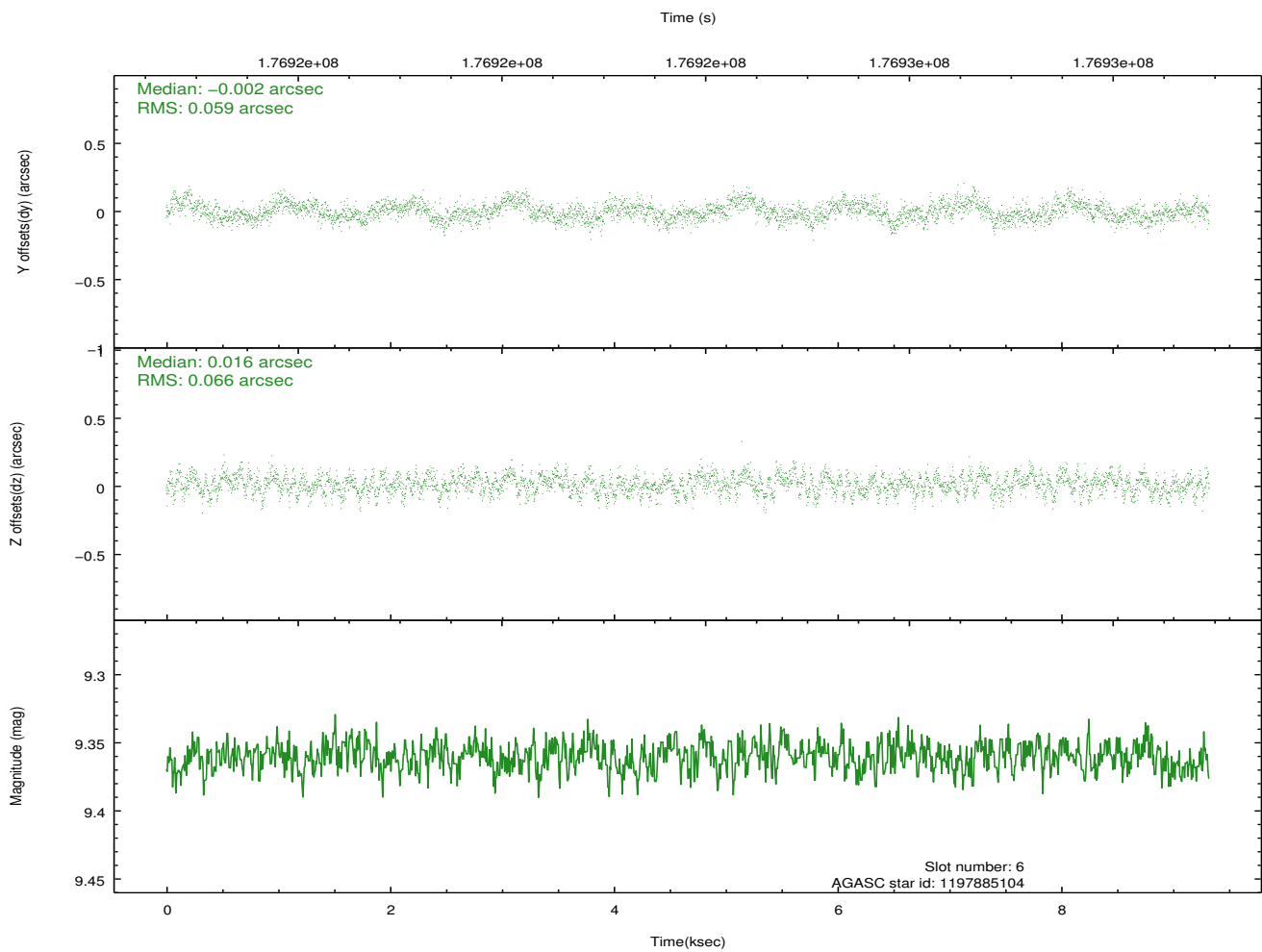
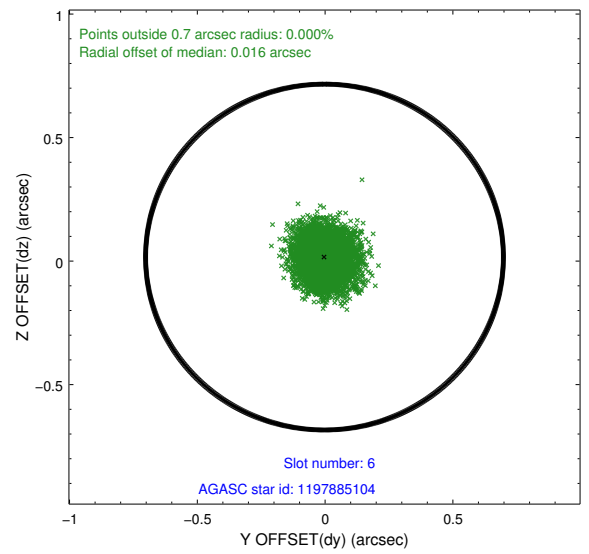
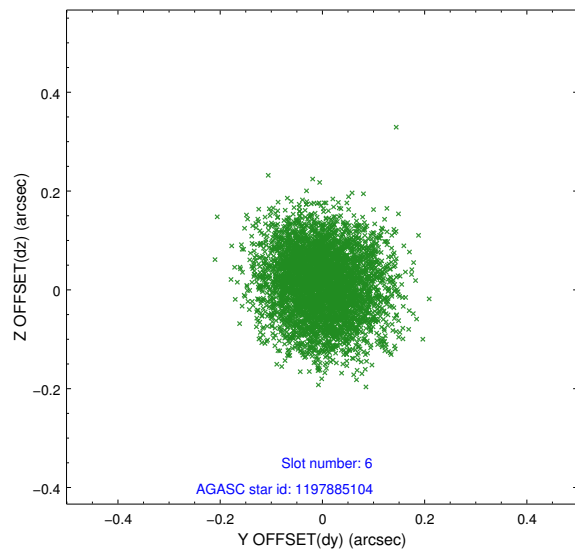
2.4.2 Slot 4



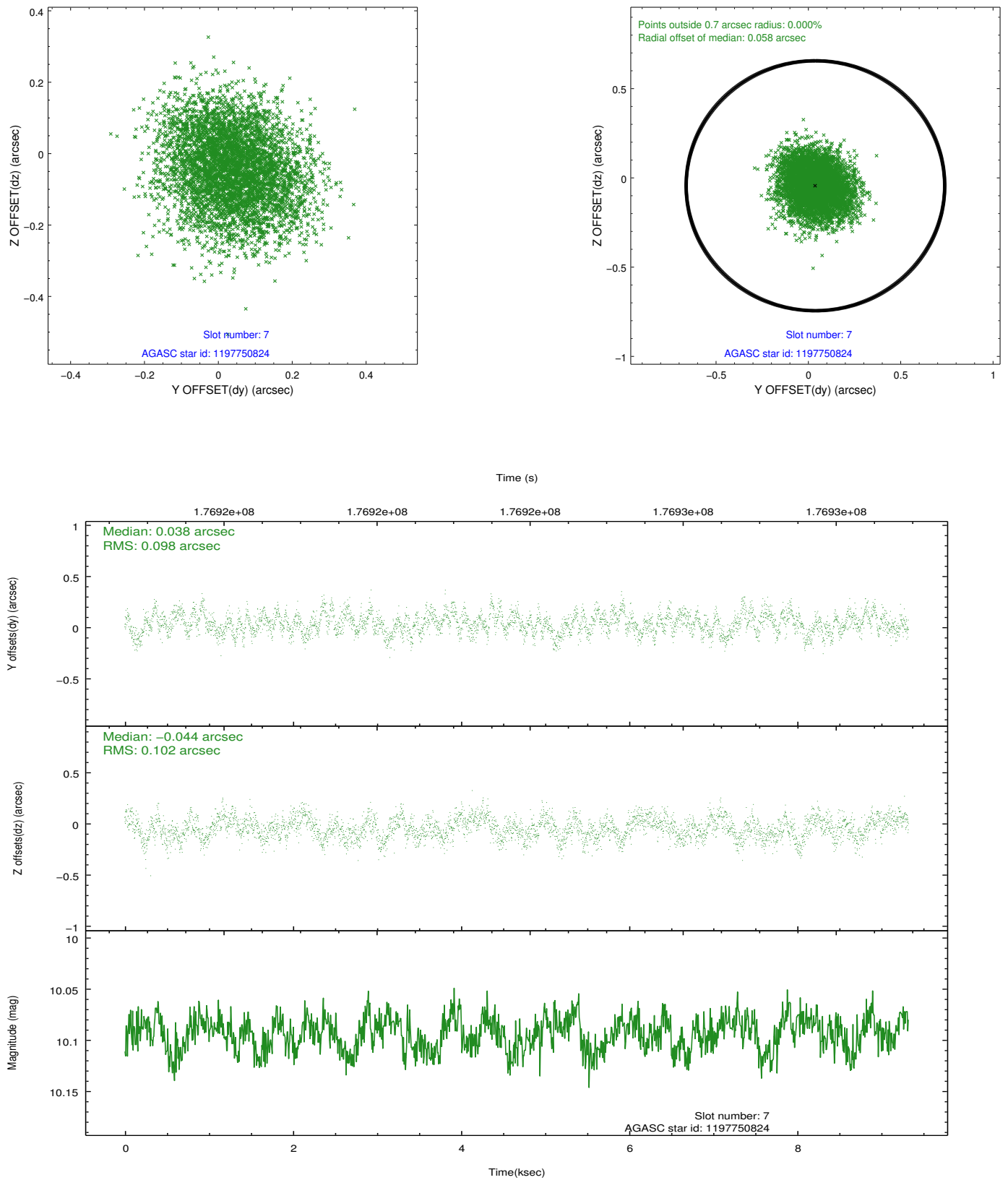
2.4.3 Slot 5



2.4.4 Slot 6

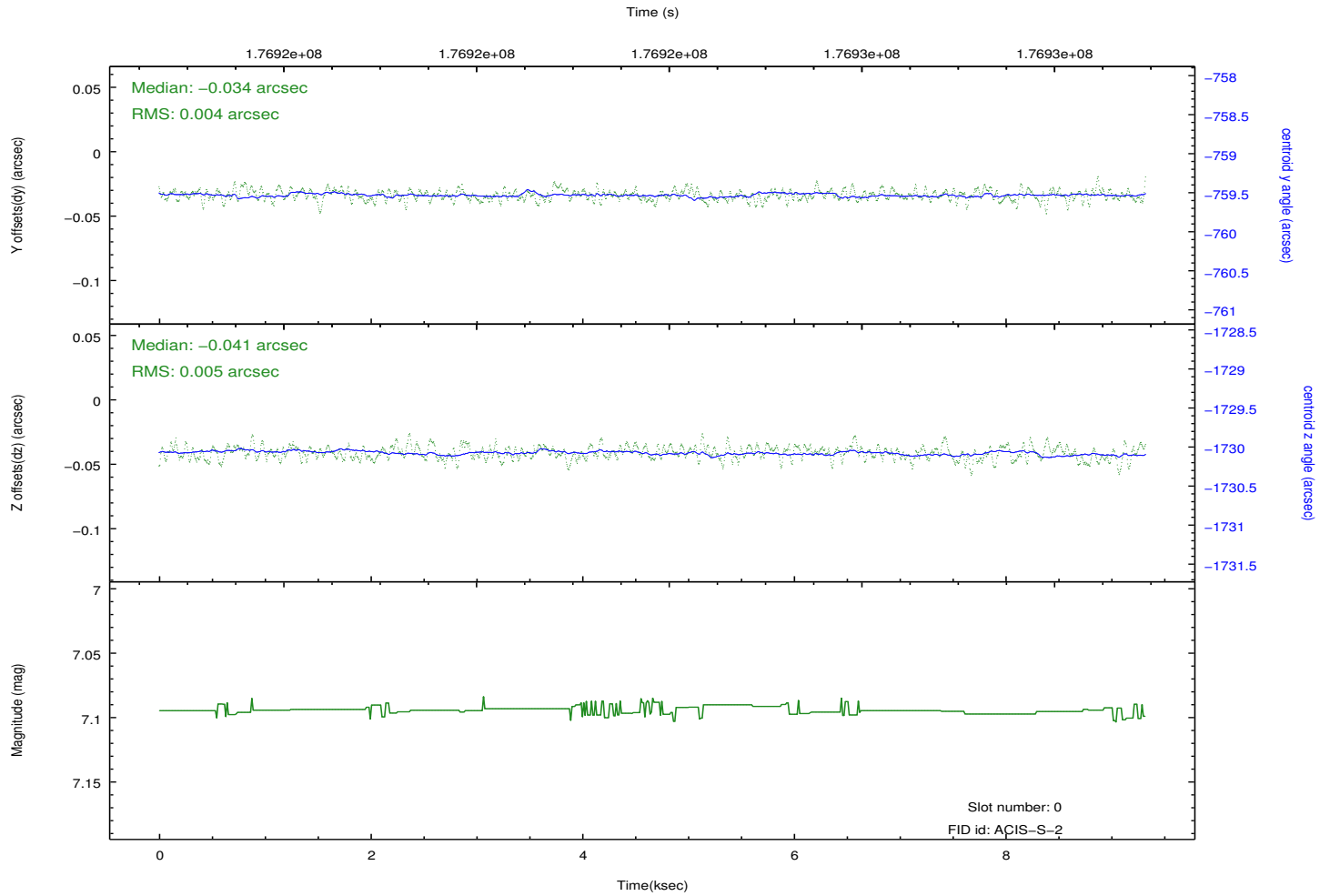
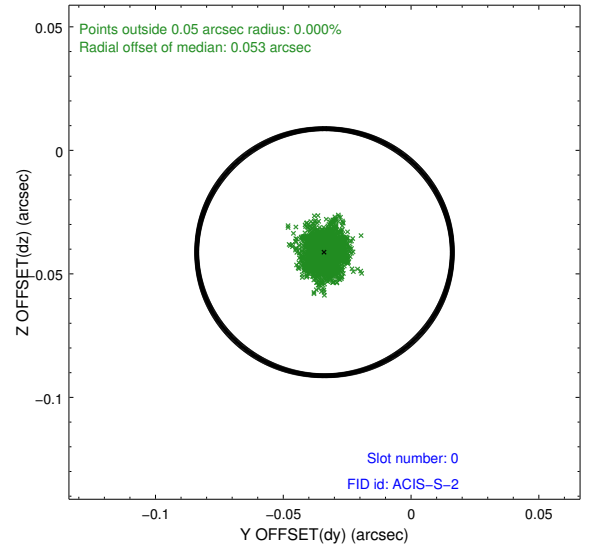
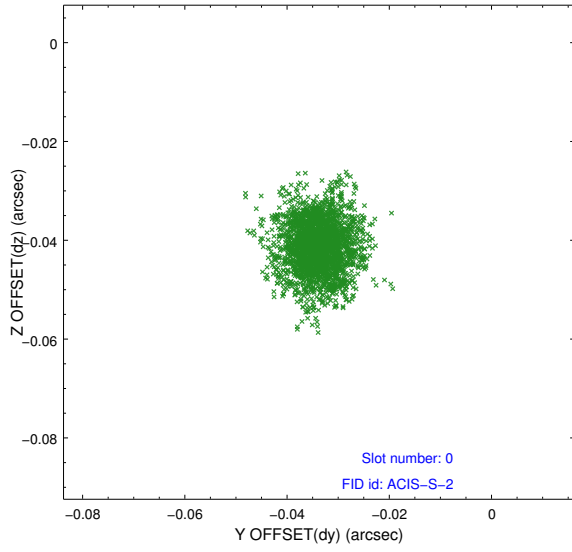


2.4.5 Slot 7

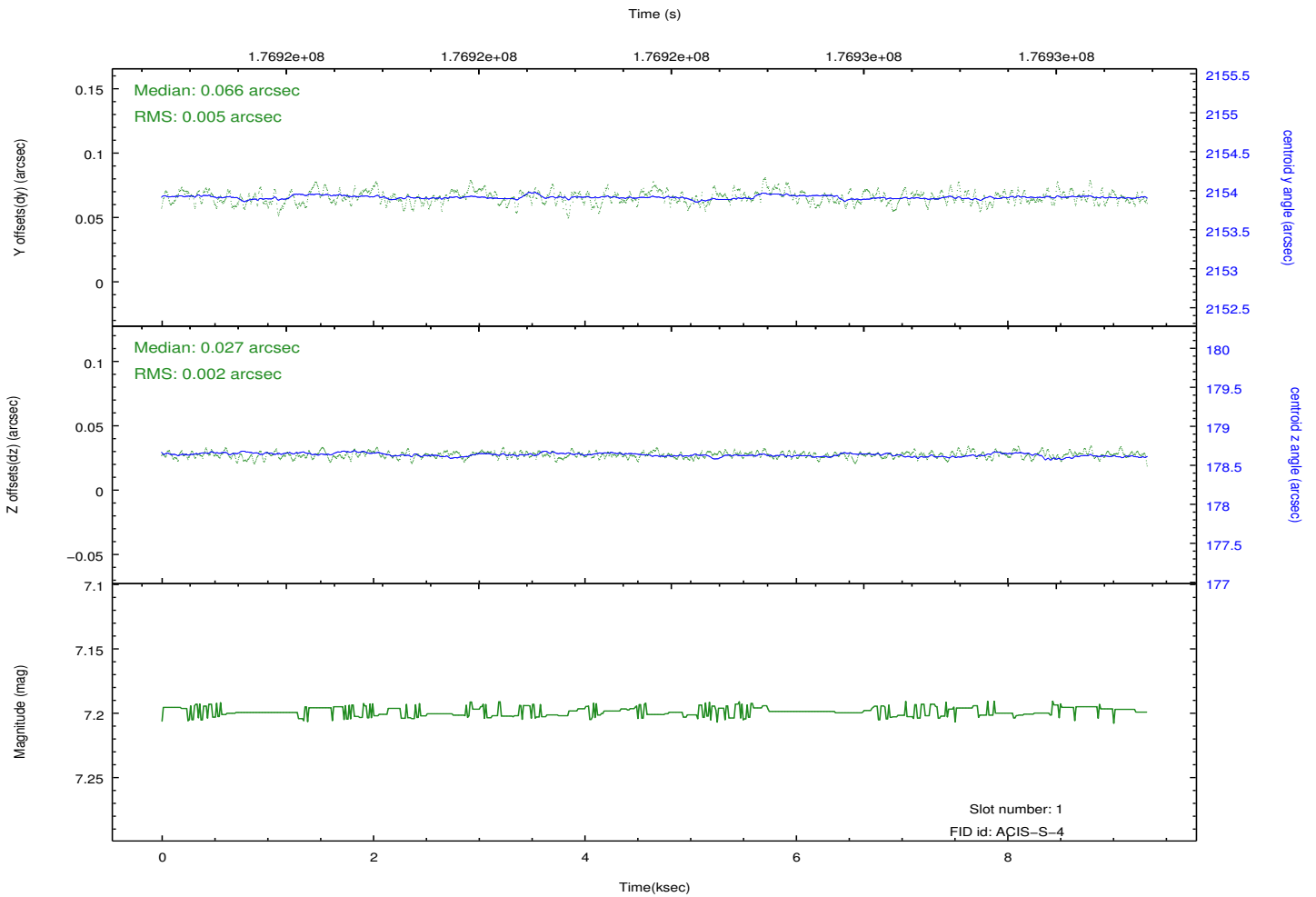
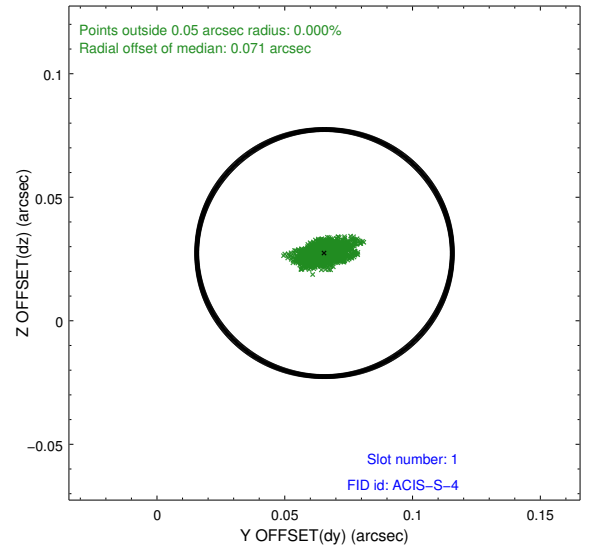
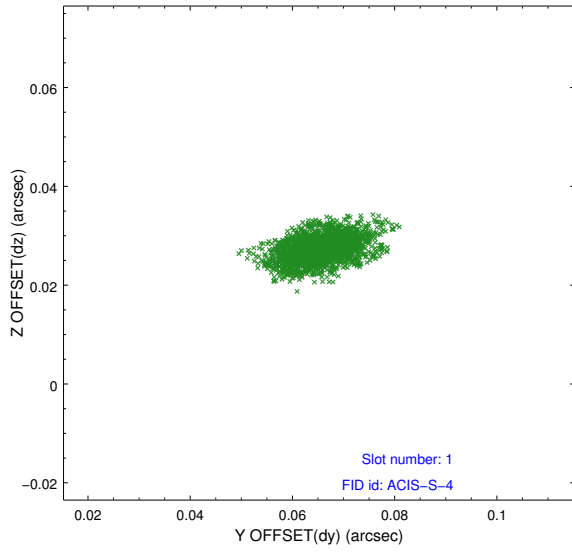


2.5 FID Slots

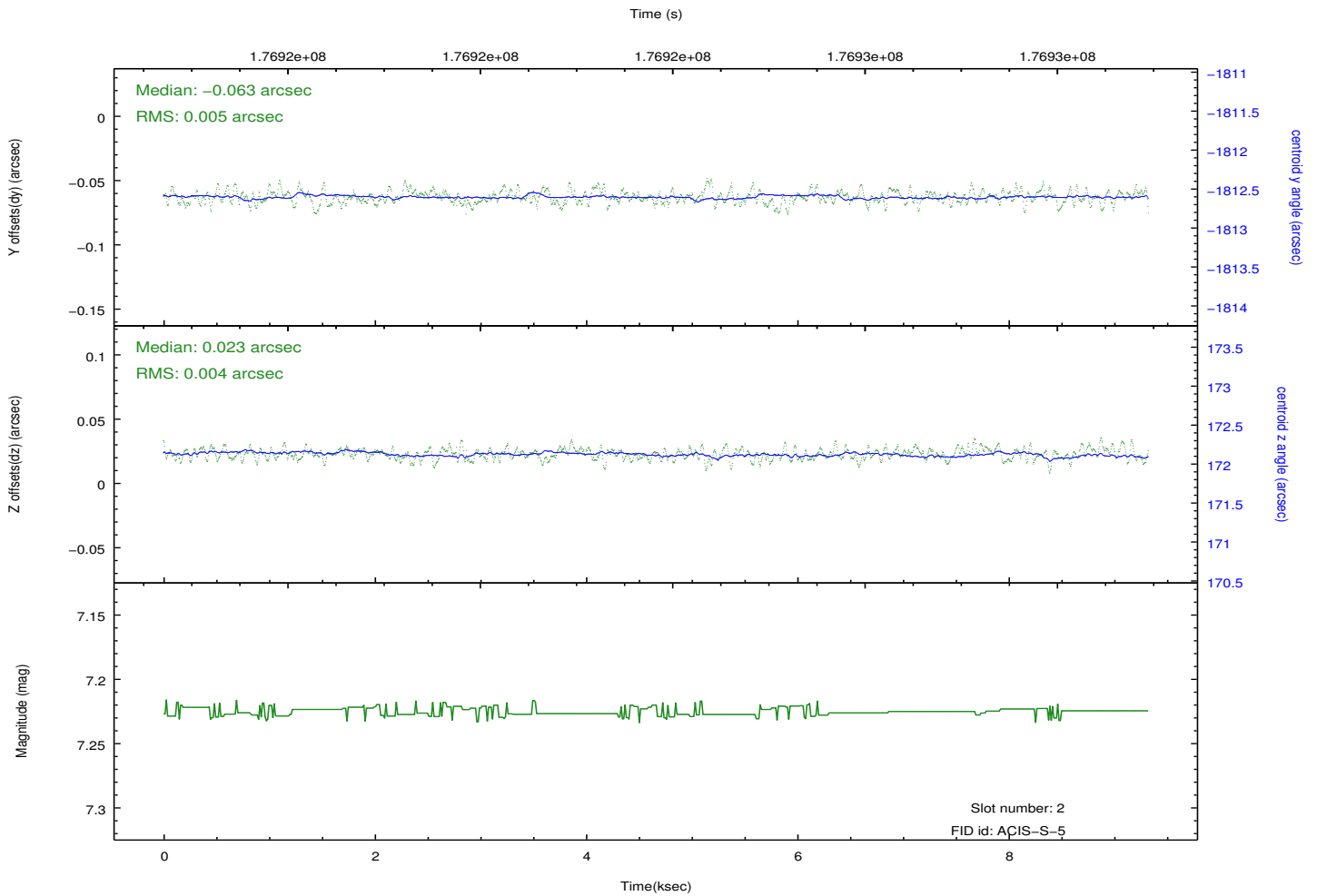
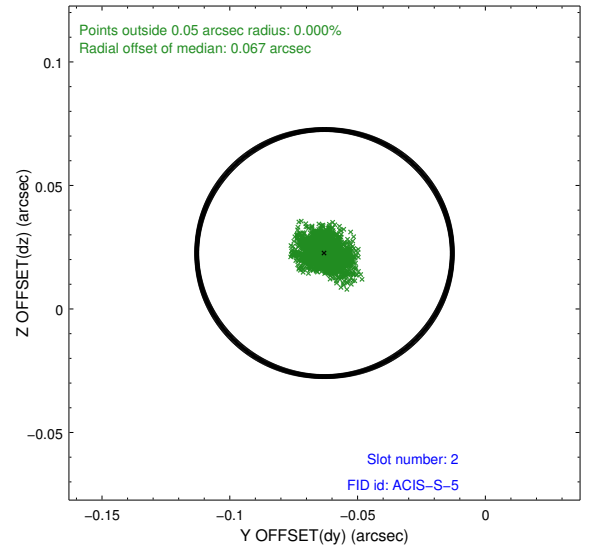
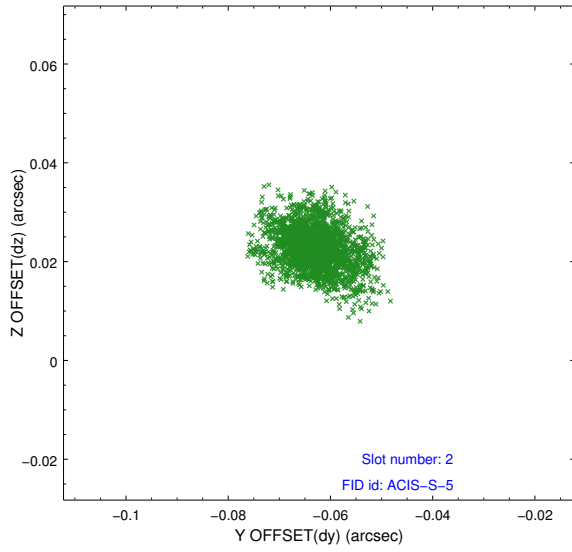
2.5.1 Slot 0



2.5.2 Slot 1



2.5.3 Slot 2



A Summary

A.1 Status

V&V Scientist	Jen Lauer
V&V Date (YYYY-MM-DD)	2012.11.29
V&V Edition	1
V&V Disposition and Status	OK
V&V Charge Time	7.964

A.2 Comments

Window constraint satisfied.