

V&V Reference Report

L2 ASCDS Version : 8.4.5

Observation 3554 - L2 Version 3
Chandra X-Ray Center

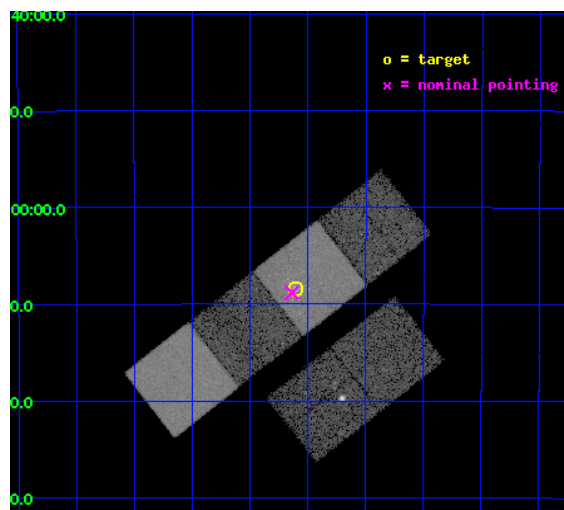
L2 Processing Date : Oct 19 2012

Contents

1	Front	2
2	OBI	3
2.1	OBI	3
2.1.1	Images	3
2.1.2	Bias	3
2.1.3	Parameters	4
2.1.4	Events	4
2.2	Compared Parameters	5
2.3	Aspect	6
2.4	Star Slots	9
2.4.1	Slot 3	9
2.4.2	Slot 4	10
2.4.3	Slot 5	11
2.4.4	Slot 6	12
2.4.5	Slot 7	13
2.5	FID Slots	14
2.5.1	Slot 0	14
2.5.2	Slot 1	15
2.5.3	Slot 2	16
A	Summary	17
A.1	Status	17
A.2	Comments	17

1 Front

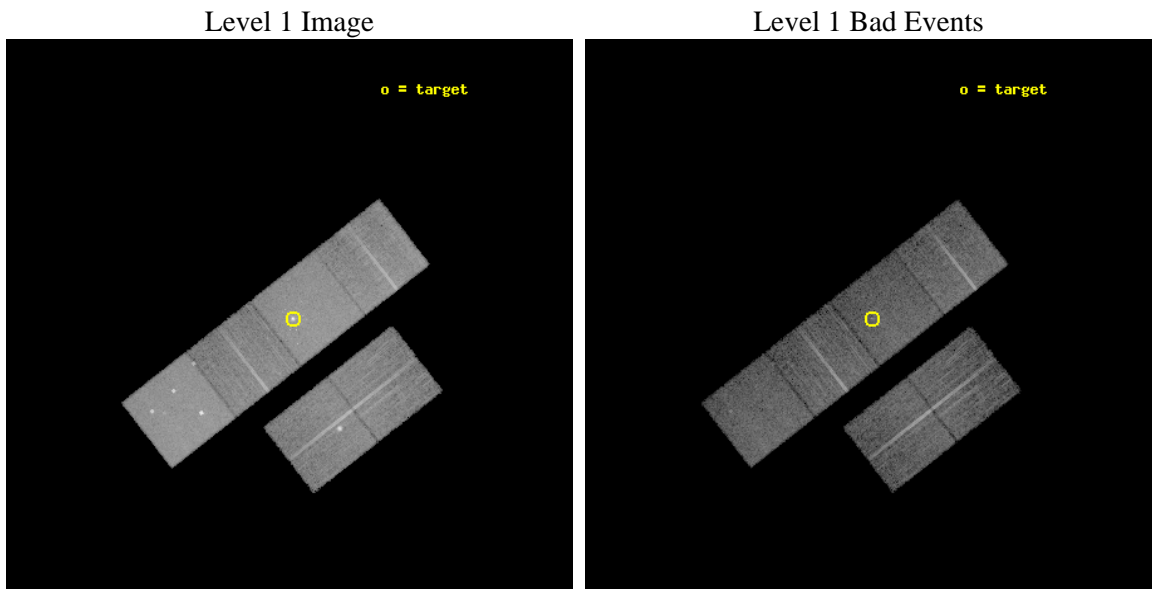
seq_num	700616	Sequence number
obs_id	3554	Observation id
title	SOLVING THE ENIGMAS OF THE NEARBY SEYFERT/STARBURST GALAXY NCG1365 WITH CHANDRA ACIS-S	Proposal title
observer	Dr. Peter Predehl	Principal investigator
object	NGC 1365	Source name
dtcycle	0	
cycle	P	events from which exps? Prim/Second/Both
ra_targ	53.401667	Observer's specified target RA [deg]
dec_targ	-36.140278	Observer's specified target Dec [deg]
ra_nom	53.409638406126	Nominal RA [deg]
dec_nom	-36.147430020537	Nominal Dec [deg]
roll_nom	321.93528179745	Nominal Roll [deg]
revision	3	Processing version of data
ontime	14796.755327731	Sum of GTIs [s]
livetime	14609.389902235	Livetime [s]
ontime2	14793.555397451	Sum of GTIs [s]
ontime3	14796.632207721	Sum of GTIs [s]
ontime5	14796.714287728	Sum of GTIs [s]
ontime6	14796.673247725	Sum of GTIs [s]
ontime7	14796.755327731	Sum of GTIs [s]
ontime8	14793.350227386	Sum of GTIs [s]
l2events	167290	Number of level 2 events



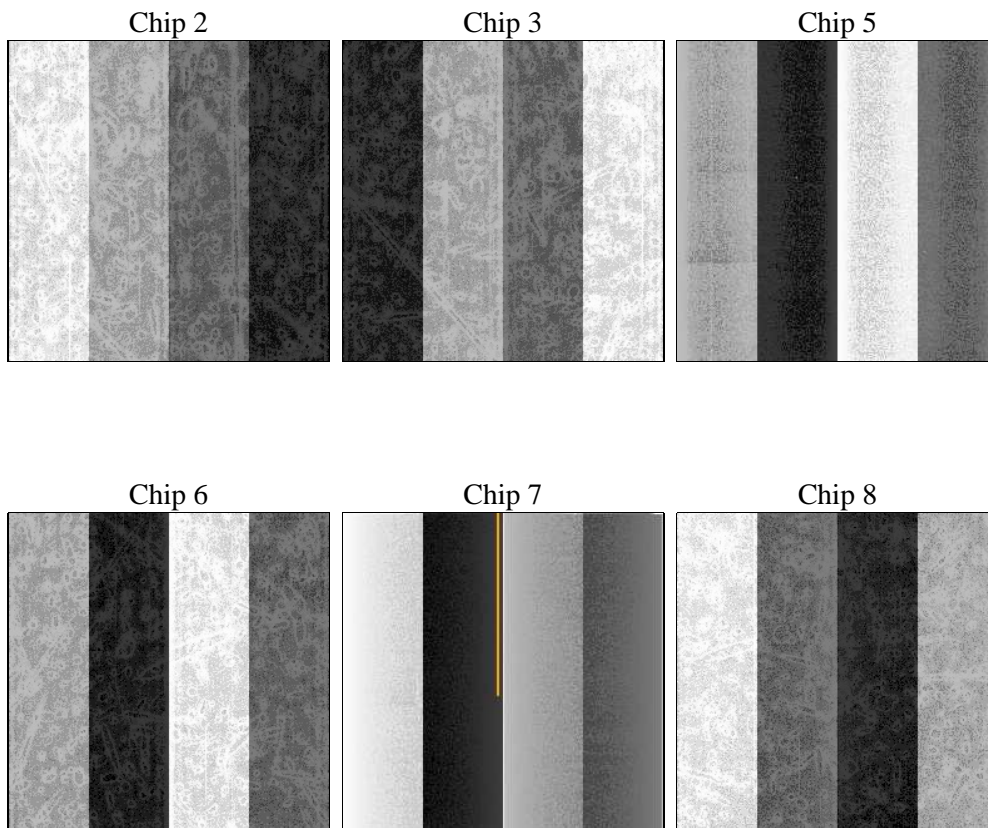
2 OBI

2.1 OBI

2.1.1 Images



2.1.2 Bias



2.1.3 Parameters

obi_num	0	Obi number	sched_exp_time	15000.000000	[s] Scheduled observation exposure time
ascdsver	8.4.5	Processing system revision	ontime	14796.755327731	Sum of GTIs [s]
caldbver	4.5.2	 	ontime2	14793.555397451	Sum of GTIs [s]
date	2012-10-19T07:19:18	Date and time of file creation	ontime3	14796.632207721	Sum of GTIs [s]
revision	3	Processing version of data	ontime5	14796.714287728	Sum of GTIs [s]
			ontime6	14796.673247725	Sum of GTIs [s]
			ontime7	14796.755327731	Sum of GTIs [s]
			ontime8	14793.350227386	Sum of GTIs [s]
			l1events	641690	Number of level 1 events

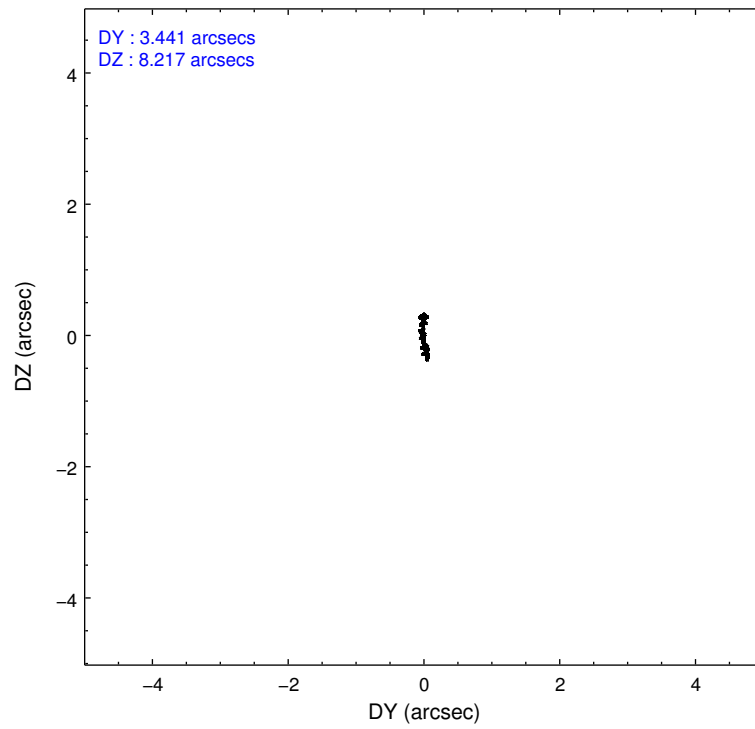
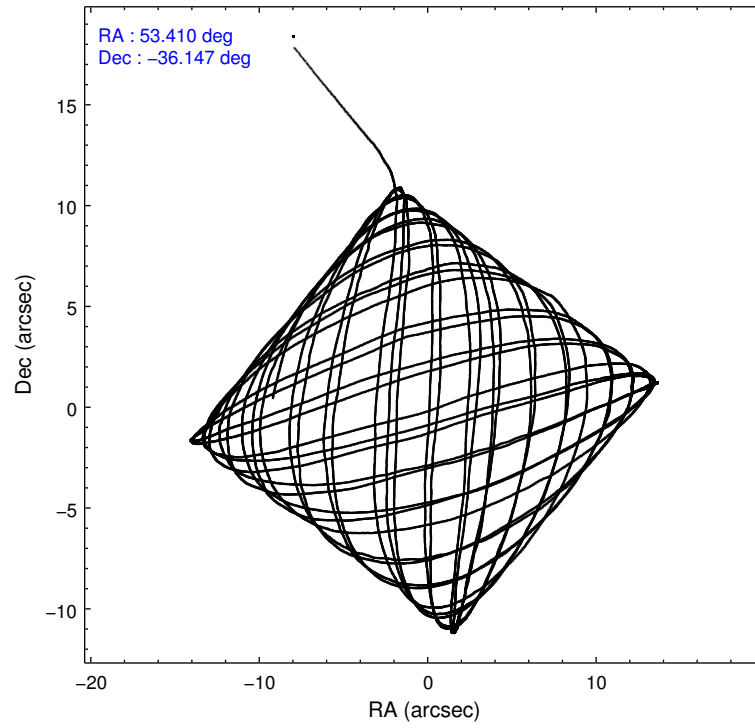
2.1.4 Events

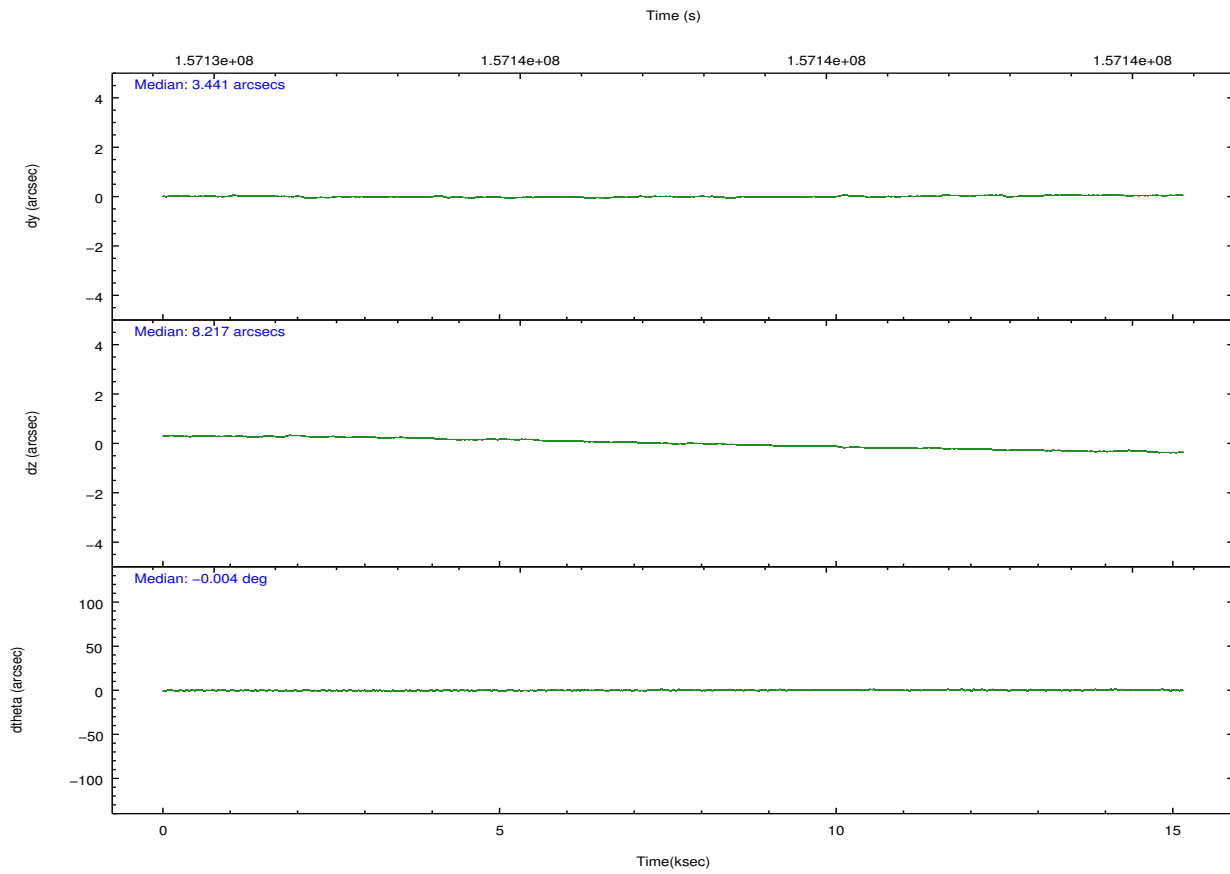
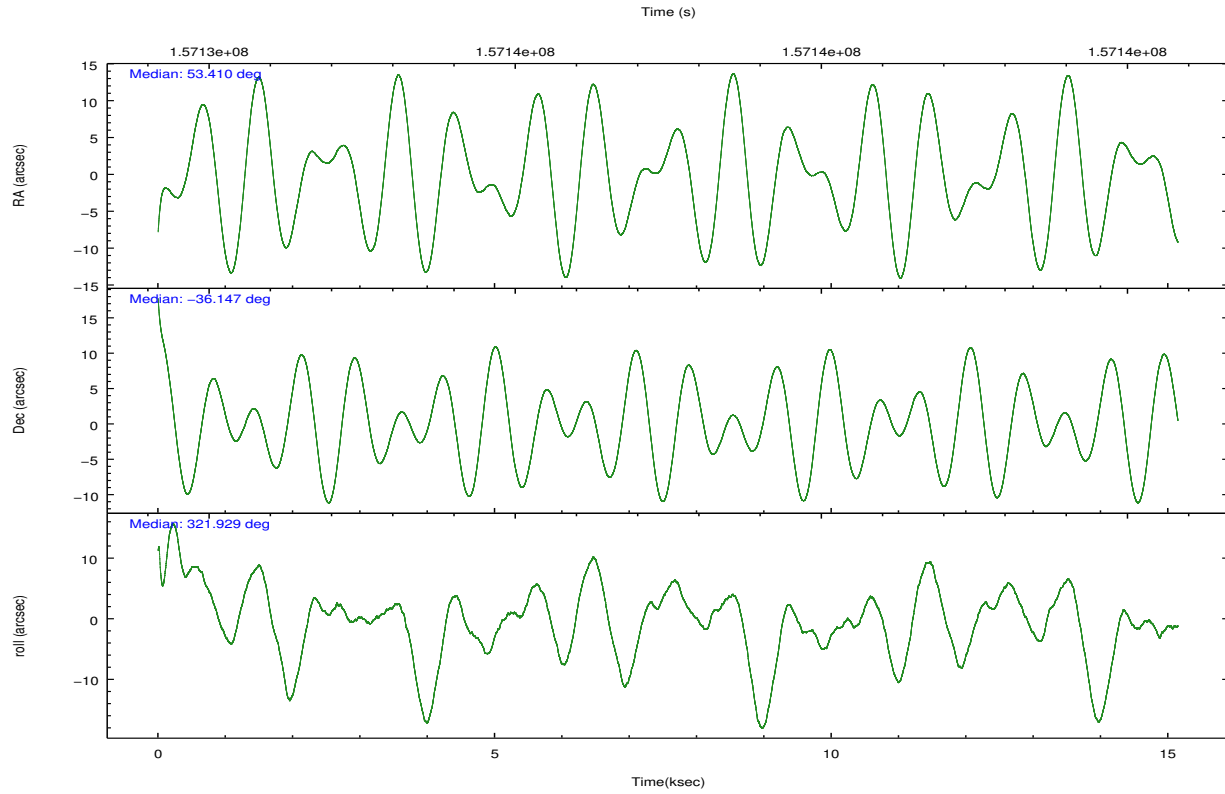
	ccd 2	ccd 3	ccd 5	ccd 6	ccd 7	ccd 8		ccd 2	ccd 3	ccd 5	ccd 6	ccd 7	ccd 8
level 1 events	90127	84191	141169	87329	129718	109156	grade 0 events	7677	5004	12466	5228	7650	8476
rejected events	76214	73432	69722	75528	67213	85246		8%	5%	8%	5%	5%	7%
rejected %	84%	87%	49%	86%	51%	78%	grade 1 events	58	51	214	54	100	84
								0%	0%	0%	0%	0%	0%
							grade 2 events	2381	2038	19561	2437	12490	4873
								2%	2%	13%	2%	9%	4%
							grade 3 events	1012	972	2964	1035	5597	2451
								1%	1%	2%	1%	4%	2%
							grade 4 events	1038	1001	2959	1065	5674	2426
								1%	1%	2%	1%	4%	2%
							grade 5 events	3372	3633	9540	3903	11314	5076
								3%	4%	6%	4%	8%	4%
							grade 6 events	1808	1750	33535	2038	31126	5692
								2%	2%	23%	2%	23%	5%
							grade 7 events	72781	69742	59930	71569	55767	80078
								80%	82%	42%	81%	42%	73%

2.2 Compared Parameters

Parameter	Planned	Actual	Parameter	Planned	Actual
Instrument	ACIS	ACIS	Obspar format version number	7	7
Detector	ACIS-235678	ACIS-235678	Obspar file type	PREDICTED	ACTUAL
Grating	NONE	NONE	Obspar update status	NONE	UPDATED
Data mode	FAINT	FAINT	Number of optional ACIS chips dropped	0	0
Observation mode	POINTING	POINTING	On-chip summing requested	N	N
[deg] Pointing RA	53.376210	53.40963840612605	Subarray requested	NONE	NONE
[deg] Pointing Dec	-36.144027	-36.14743002053731	Alternating exposures requested	N	N
[deg] Pointing Roll	321.758934	321.9352817974537	[s] Primary exposure time	0.000000	3.2
[mm] SIM focus pos	-0.684267	-0.6828225247311905			
[mm] SIM defocus	0	0.001444936568705701			
[mm] SIM translation stage pos	-190.132523	-190.1400660498719			
[mm] SIM translation stage offset	0	0.00754346686406393			
[s] Observation start time (MET)	157130071.184000	157129060.75315			
Observation start date	2002-12-24T15:13:27	2002-12-24T14:57:40			
[s] Observation end time (MET)	157145071.184000	157145663.70385			
Observation end date	2002-12-24T19:23:27	2002-12-24T19:34:23			
Read mode	TIMED	TIMED			

2.3 Aspect



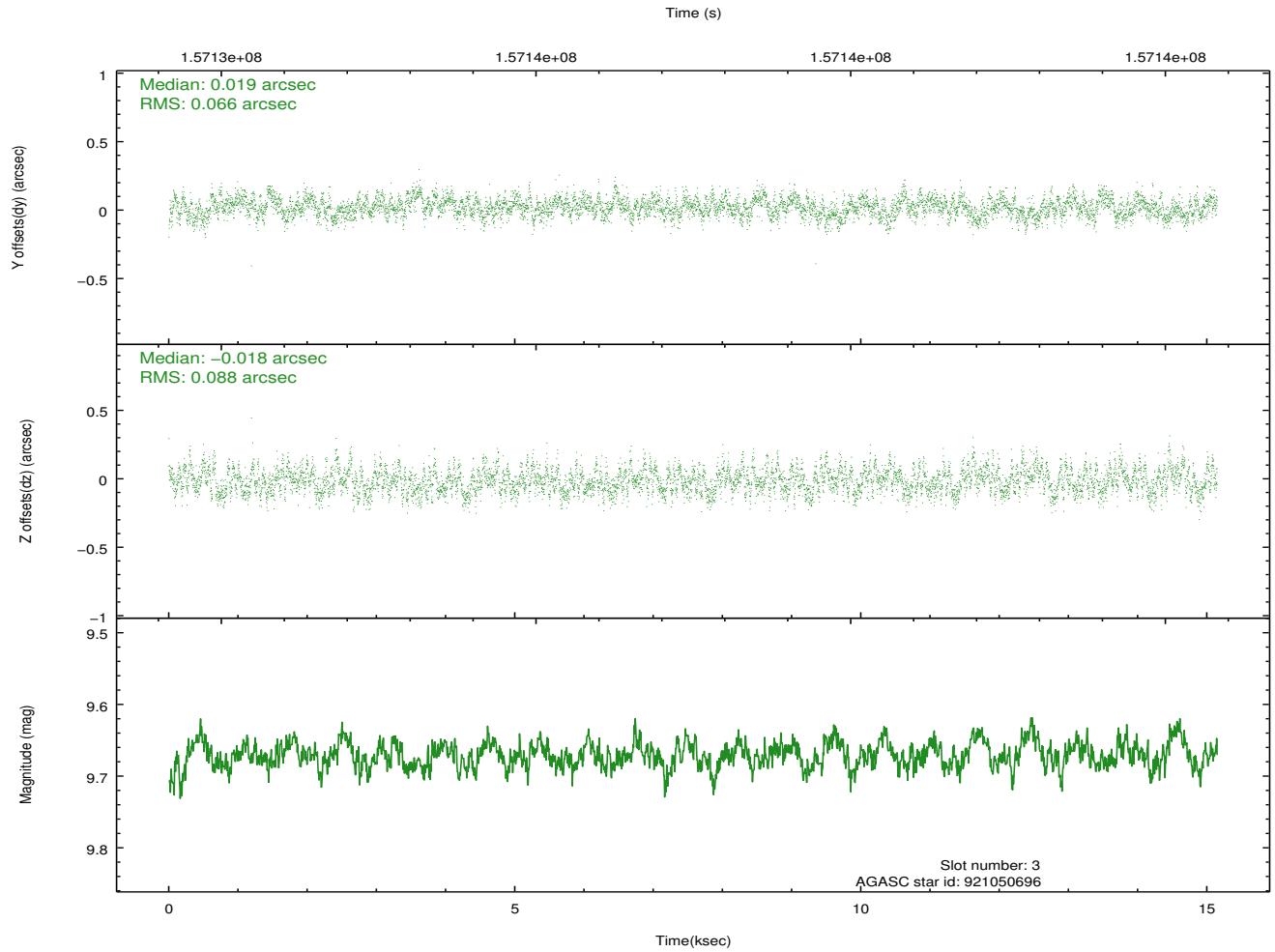
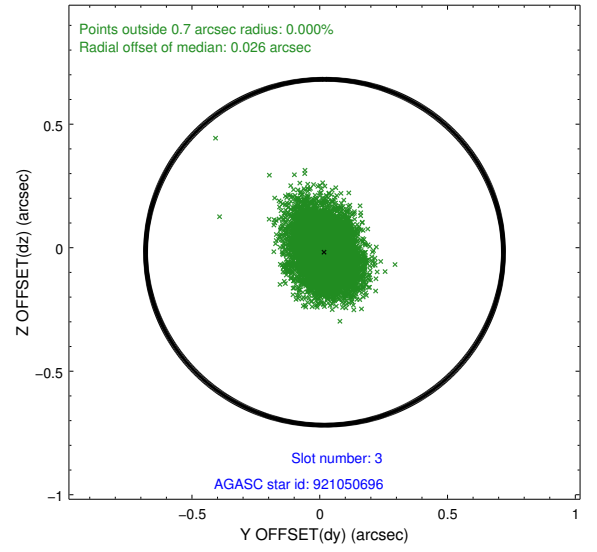
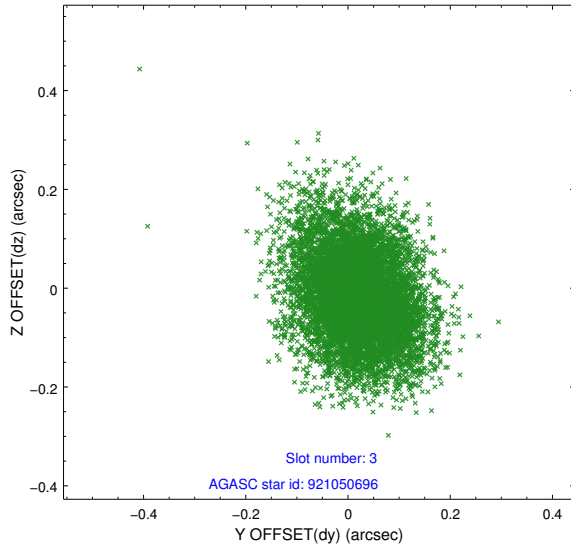


Slot Statistics

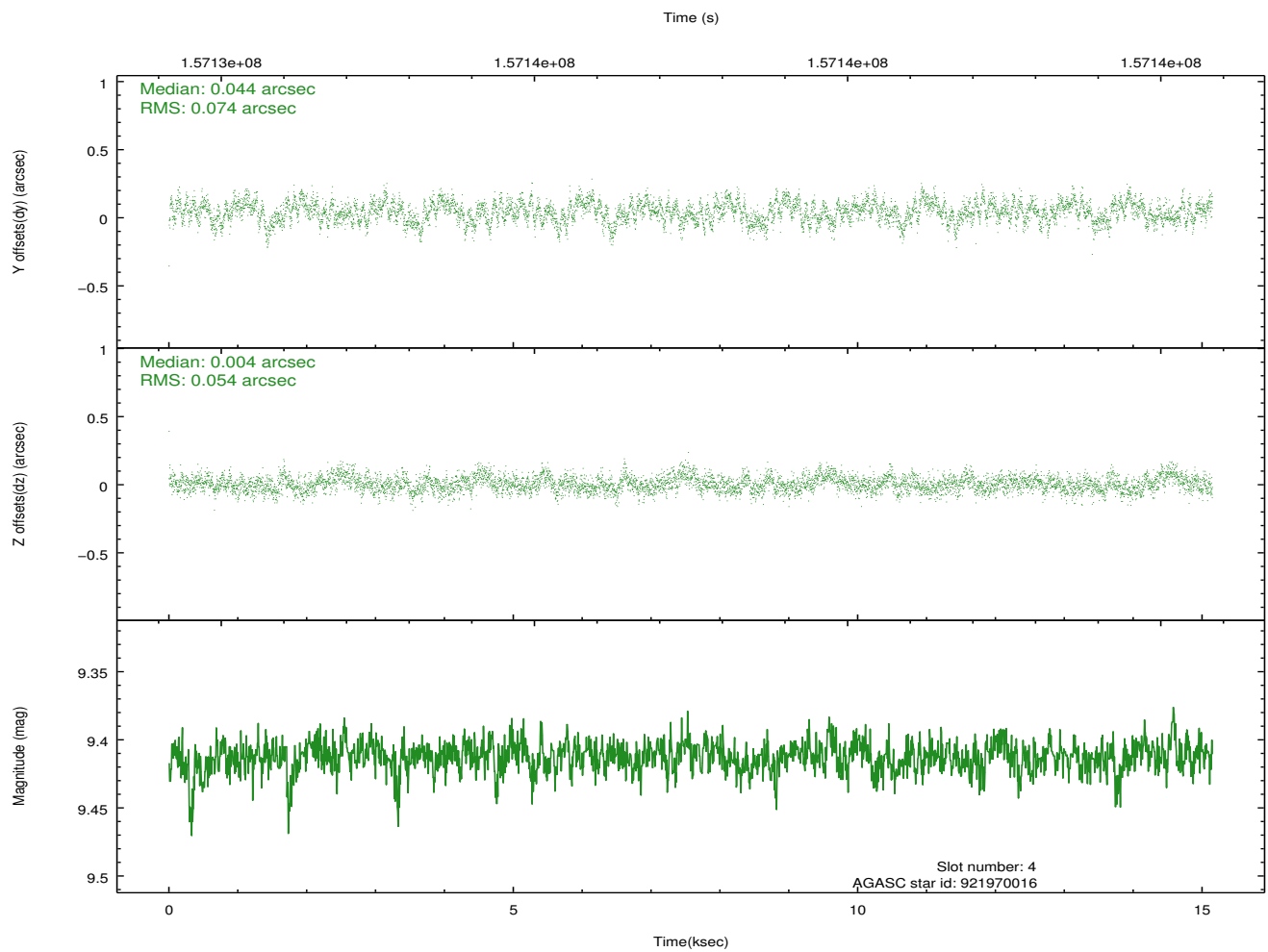
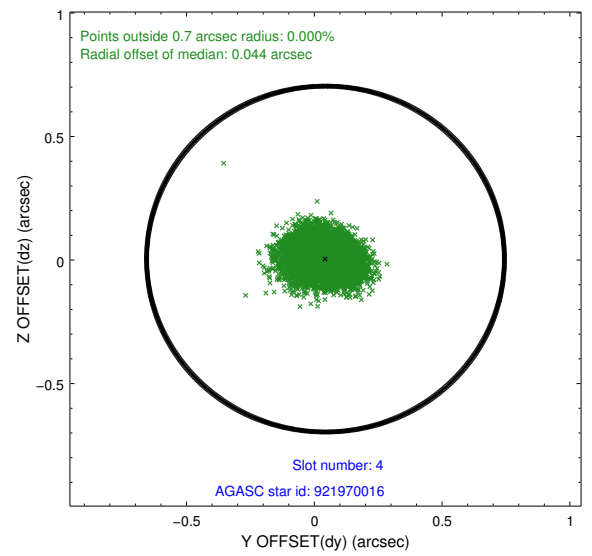
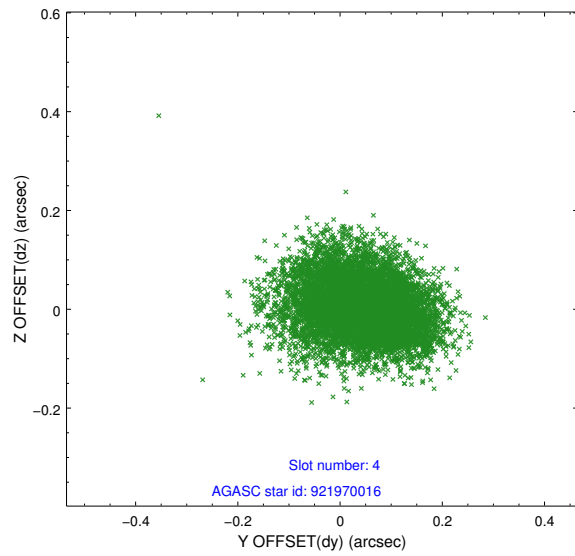
slot	status	id	mag	n_pts	med_dy	med_dz	dr1	dr2	ra	dec	mean_y	mean_z
0	FID	ACIS-S-2	7.11	3694	-0.004	0.002	0.008	0.012	0.000000	0.000000	-756.12	-1729.40
1	FID	ACIS-S-4	7.20	3692	-0.008	0.002	0.006	0.011	0.000000	0.000000	2157.04	178.75
2	FID	ACIS-S-5	7.24	3693	-0.019	0.005	0.007	0.011	0.000000	0.000000	-1808.57	172.79
3	GUIDE	921050696	9.67	7383	0.019	-0.018	0.116	0.190	52.859413	-36.623296	-101.62	-2282.69
4	GUIDE	921970016	9.41	7383	0.044	0.004	0.098	0.159	54.228536	-36.081558	1815.92	1703.21
5	GUIDE	921051744	9.87	7366	-0.047	-0.008	0.120	0.202	52.780334	-36.203991	-1221.83	-1245.19
6	GUIDE	921048648	9.05	7386	-0.008	-0.003	0.112	0.174	53.884610	-35.870023	556.74	1689.61
7	GUIDE	921967072	7.69	7388	-0.003	0.024	0.054	0.096	54.269247	-36.292226	2373.21	1175.91

2.4 Star Slots

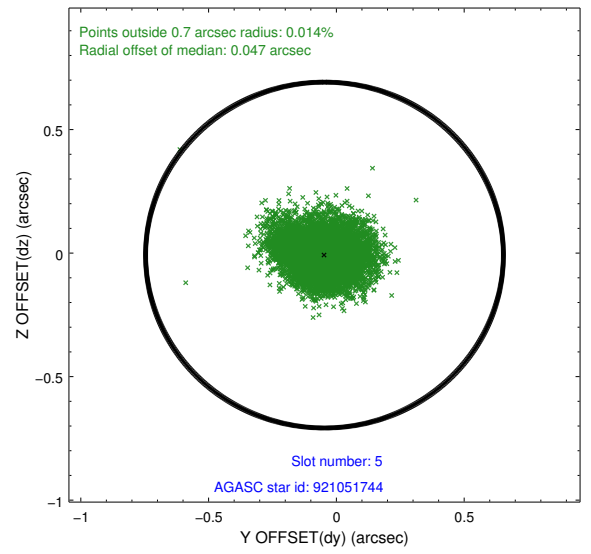
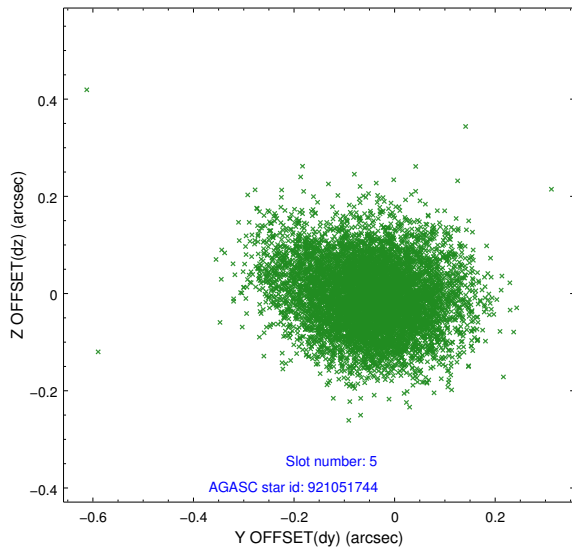
2.4.1 Slot 3



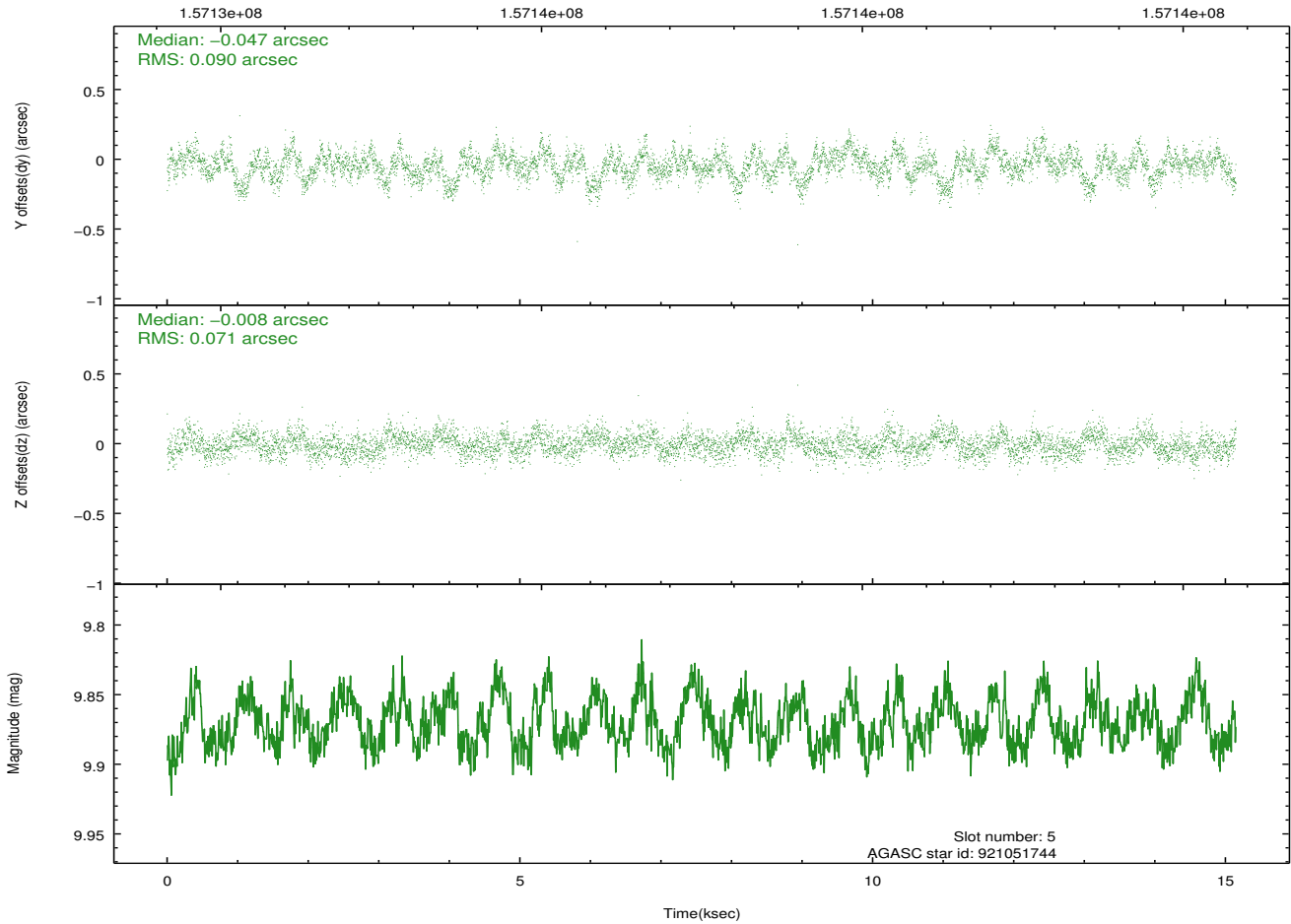
2.4.2 Slot 4



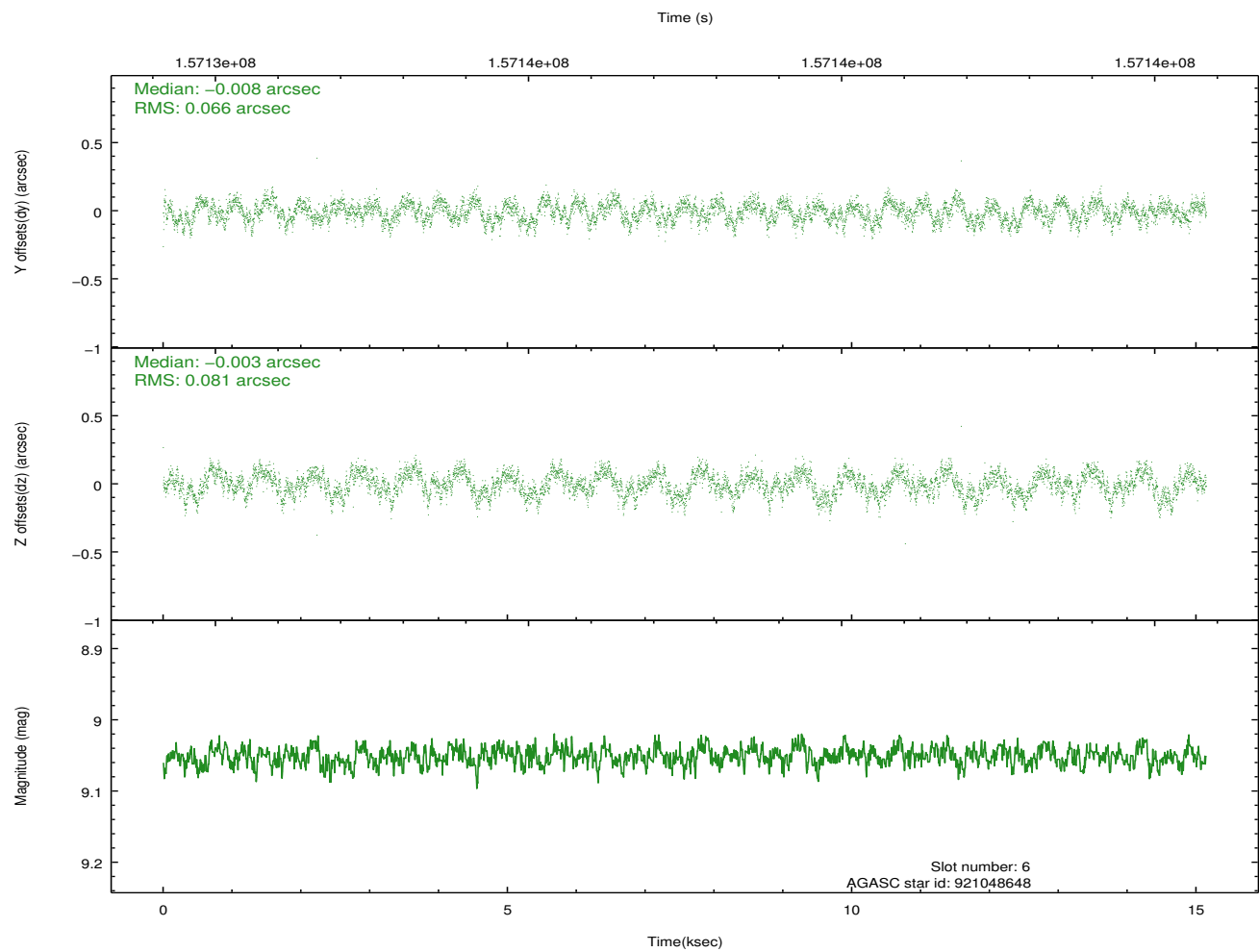
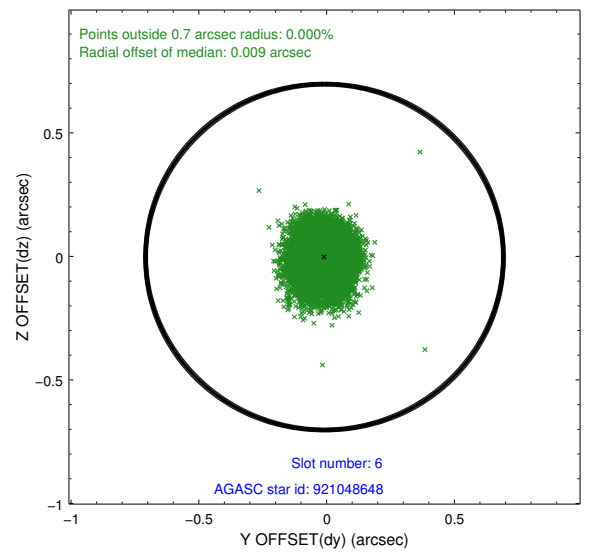
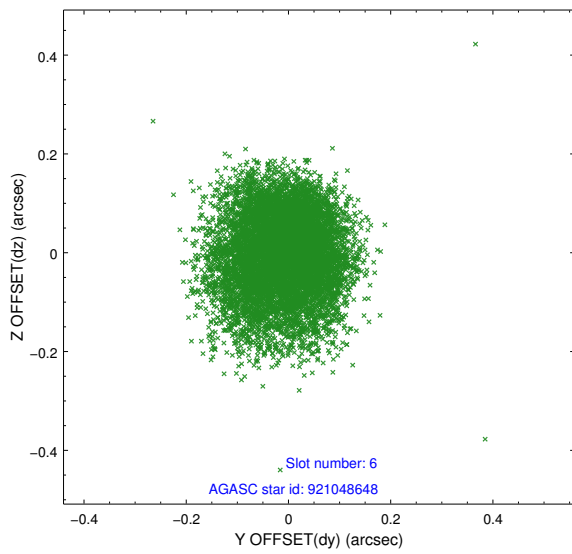
2.4.3 Slot 5



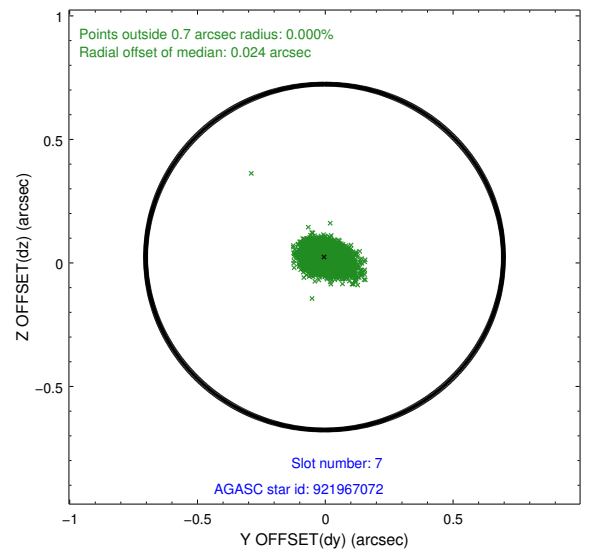
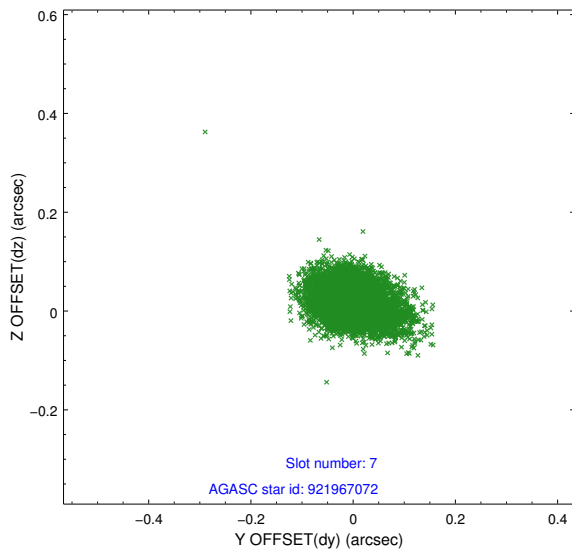
Time (s)



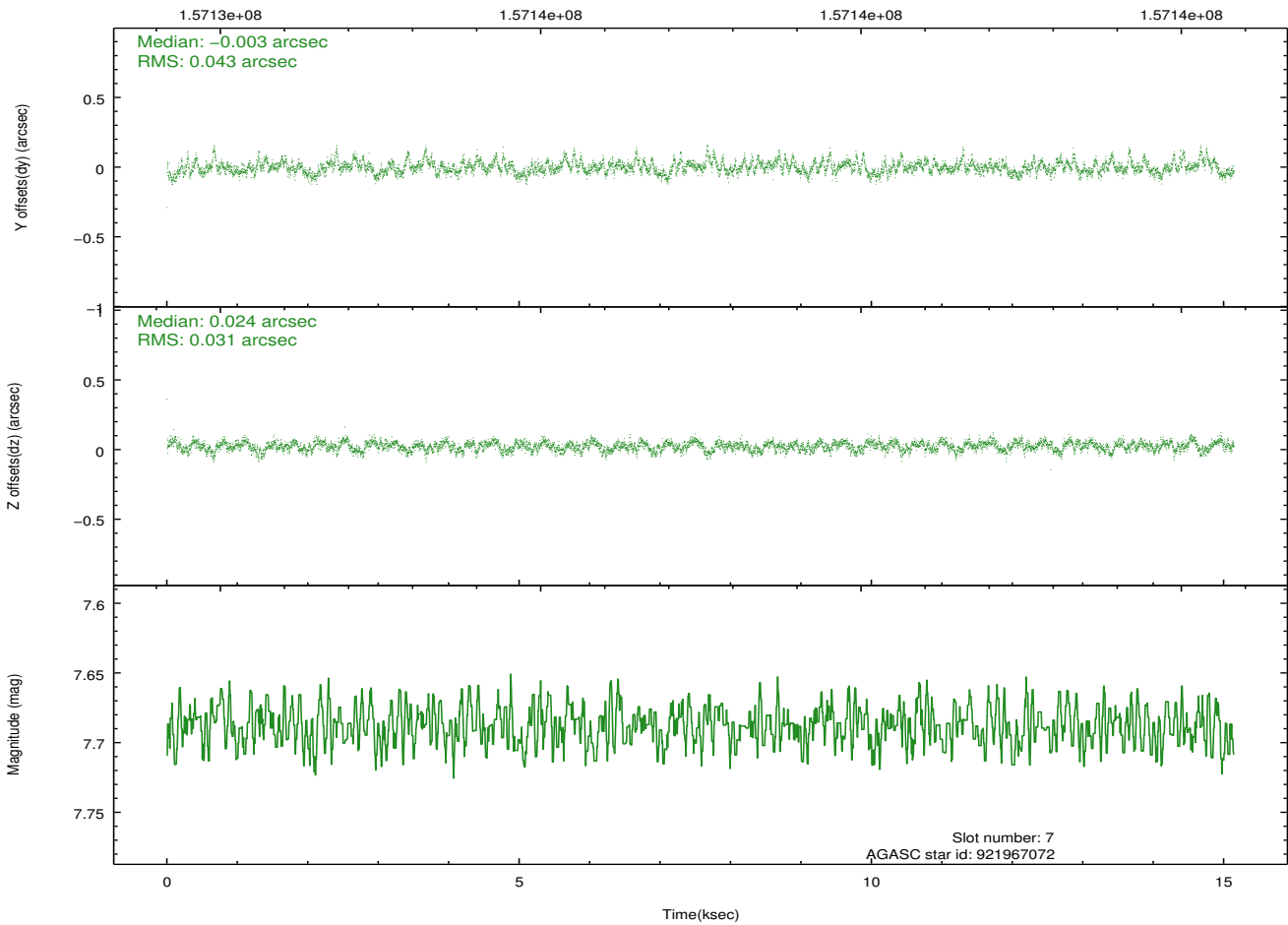
2.4.4 Slot 6



2.4.5 Slot 7

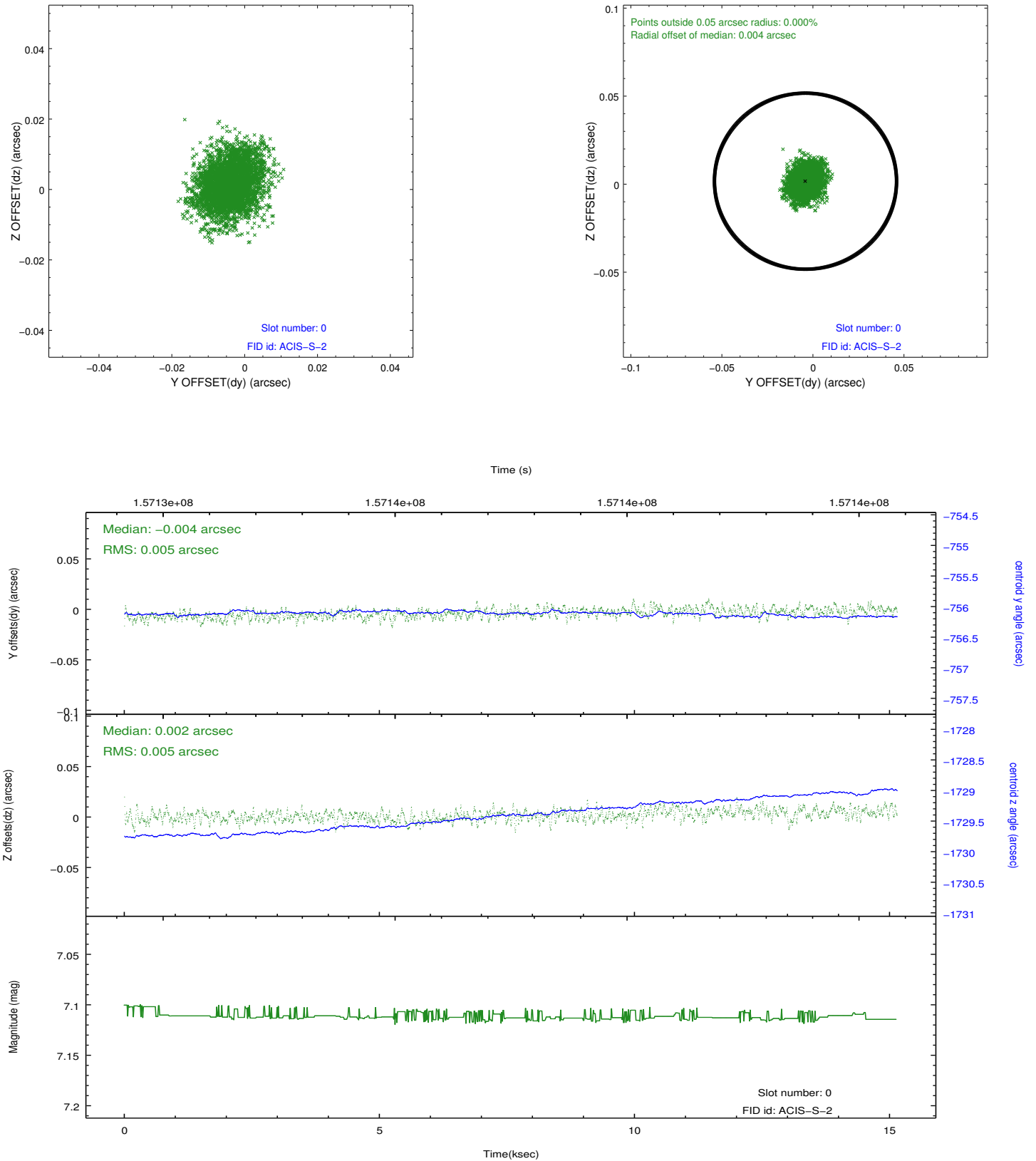


Time (s)

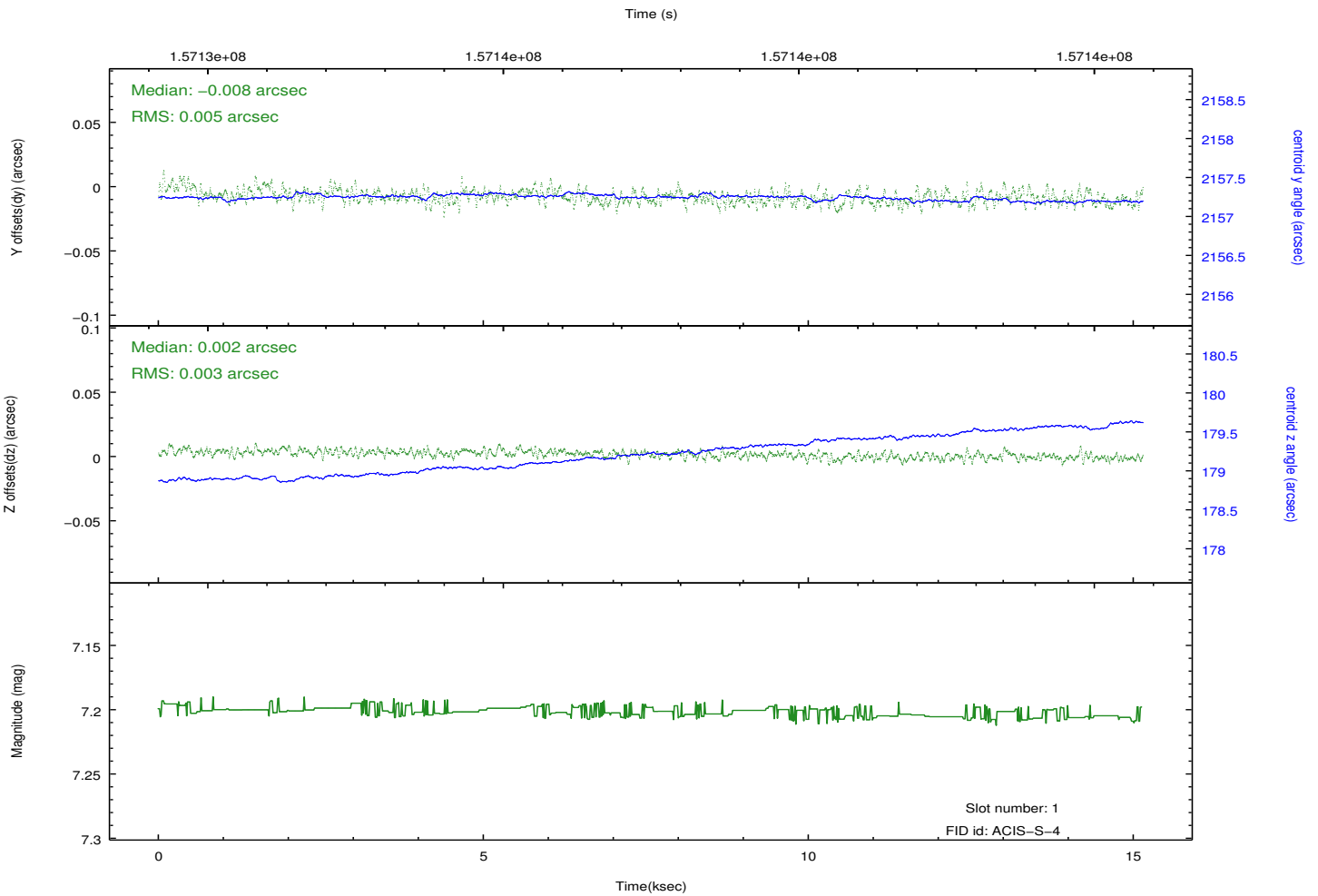
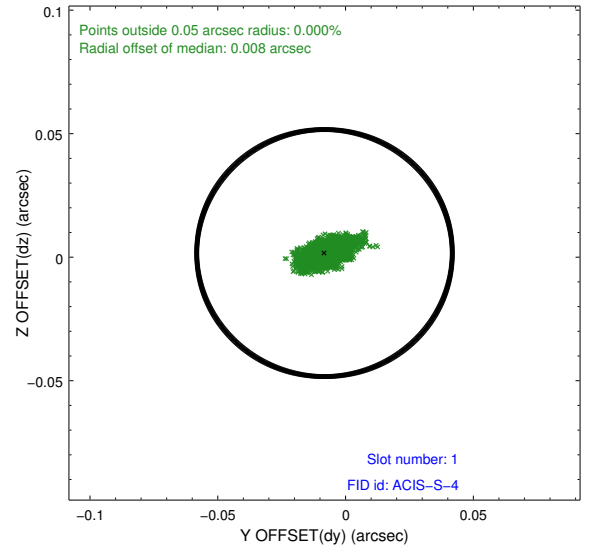
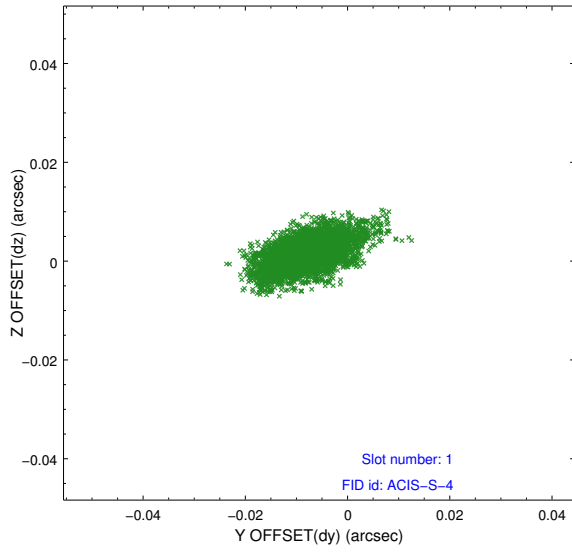


2.5 FID Slots

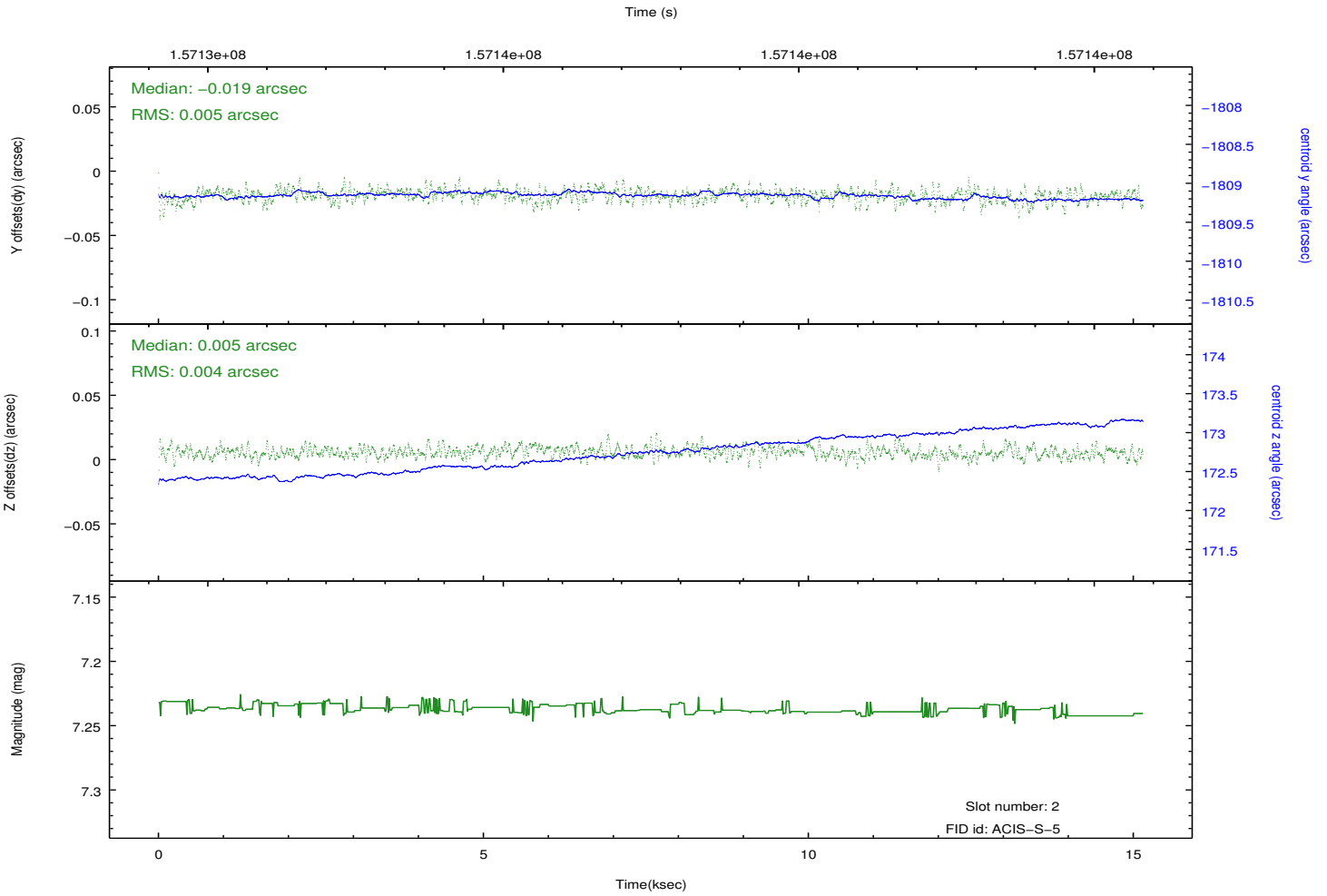
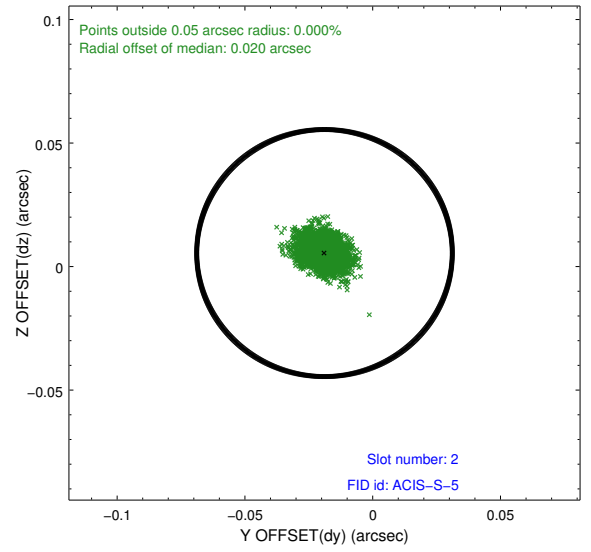
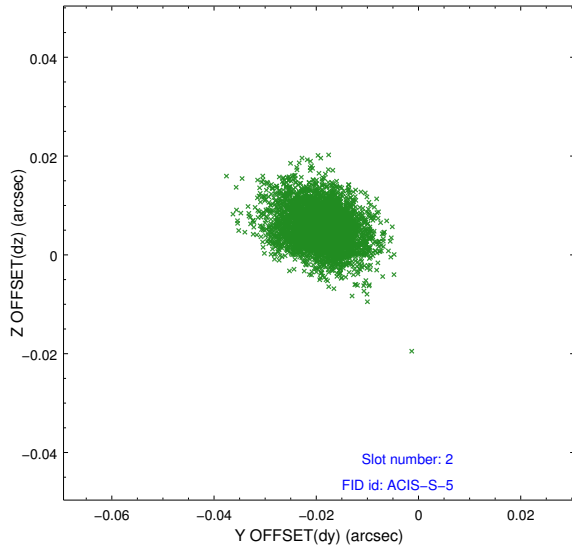
2.5.1 Slot 0



2.5.2 Slot 1



2.5.3 Slot 2



A Summary

A.1 Status

V&V Scientist	Jen Lauer
V&V Date (YYYY-MM-DD)	2012.10.31
V&V Edition	1
V&V Disposition and Status	OK
V&V Charge Time	14.799

A.2 Comments