

V&V Reference Report

L2 ASCDS Version : 8.4.5

Observation 3594 - L2 Version 3
Chandra X-Ray Center

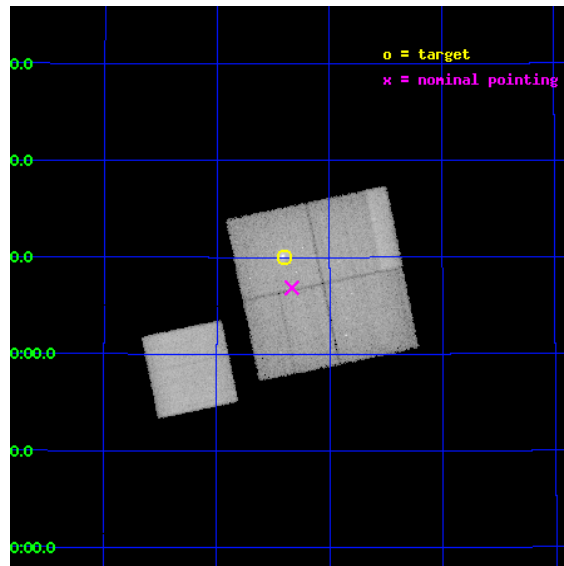
L2 Processing Date : Nov 2 2012

Contents

1	Front	2
2	OBI	3
2.1	OBI	3
2.1.1	Images	3
2.1.2	Bias	3
2.1.3	Parameters	4
2.1.4	Events	4
2.2	Compared Parameters	5
2.3	Aspect	6
2.4	Star Slots	9
2.4.1	Slot 3	9
2.4.2	Slot 4	10
2.4.3	Slot 5	11
2.4.4	Slot 6	12
2.4.5	Slot 7	13
2.5	FID Slots	14
2.5.1	Slot 0	14
2.5.2	Slot 1	15
2.5.3	Slot 2	16
A	Summary	17
A.1	Status	17
A.2	Comments	17

1 Front

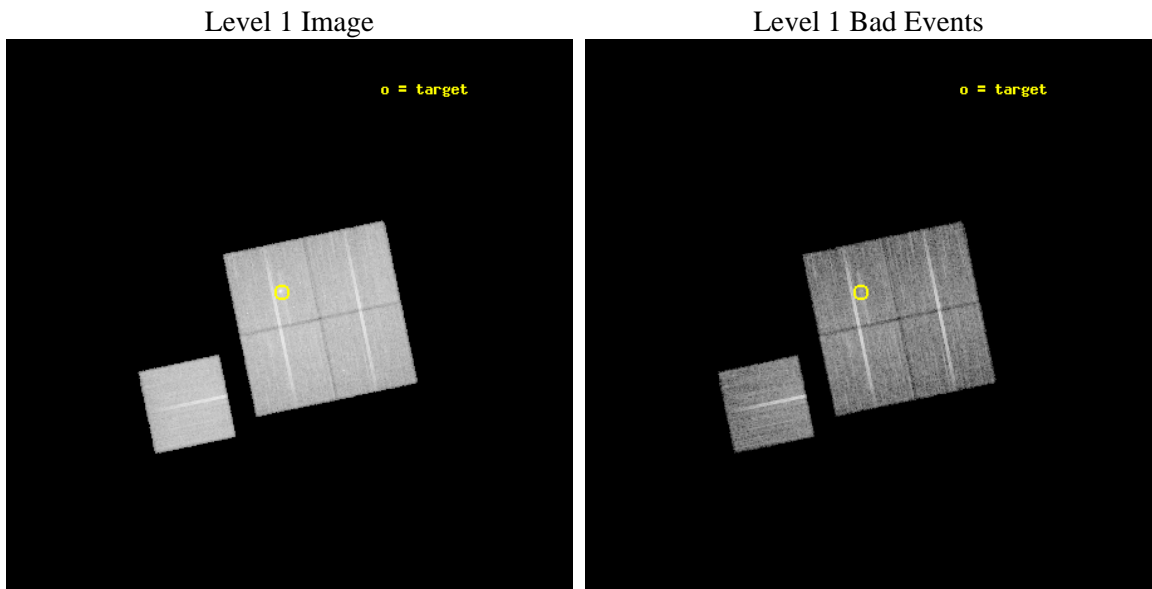
seq_num	800315	Sequence number
obs_id	3594	Observation id
title	X-RAY/SZ DETERMINATION OF COSMOLOGICAL PARAMETERS	Proposal title
observer	DR. LEON VANSPEYBROECK	Principal investigator
object	MACS-J1621.3+3810	Source name
dtcycle	0	
cycle	P	events from which exps? Prim/Second/Both
ra_targ	245.35	Observer's specified target RA [deg]
dec_targ	38.167	Observer's specified target Dec [deg]
ra_nom	245.3334570427	Nominal RA [deg]
dec_nom	38.114278789555	Nominal Dec [deg]
roll_nom	258.22899805995	Nominal Roll [deg]
revision	3	Processing version of data
ontime	19990.269895583	Sum of GTIs [s]
livetime	19729.082302775	Livetime [s]
ontime0	20030.9792386	Sum of GTIs [s]
ontime1	20009.033626914	Sum of GTIs [s]
ontime2	19993.369915217	Sum of GTIs [s]
ontime3	19990.269895583	Sum of GTIs [s]
ontime6	20008.95157674	Sum of GTIs [s]
l2events	248650	Number of level 2 events



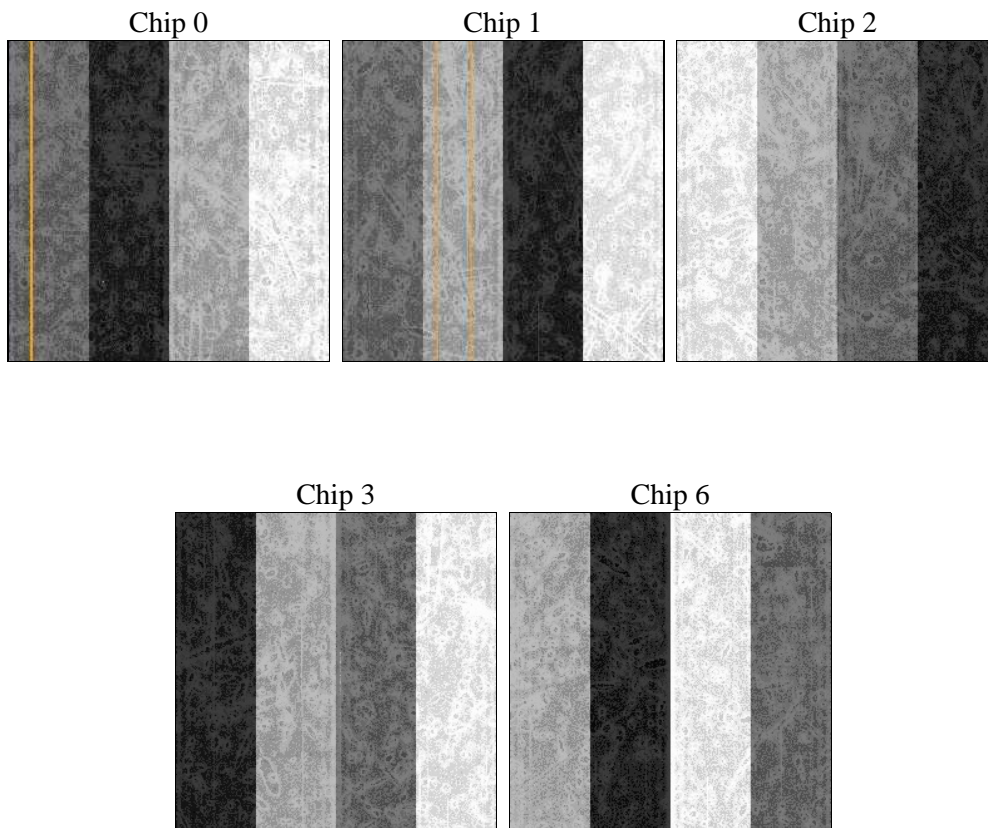
2 OBI

2.1 OBI

2.1.1 Images



2.1.2 Bias



2.1.3 Parameters

obi_num	0	Obi number	sched_exp_time	19994.357000	[s] Scheduled observation exposure time
ascdsver	8.4.5	Processing system revision	ontime	19990.269895583	Sum of GTIs [s]
caldbver	4.5.2	 	ontime0	20030.9792386	Sum of GTIs [s]
date	2012-11-02T16:14:12	Date and time of file creation	ontime1	20009.033626914	Sum of GTIs [s]
revision	3	Processing version of data	ontime2	19993.369915217	Sum of GTIs [s]
			ontime3	19990.269895583	Sum of GTIs [s]
			ontime6	20008.95157674	Sum of GTIs [s]
			l1events	754689	Number of level 1 events

2.1.4 Events

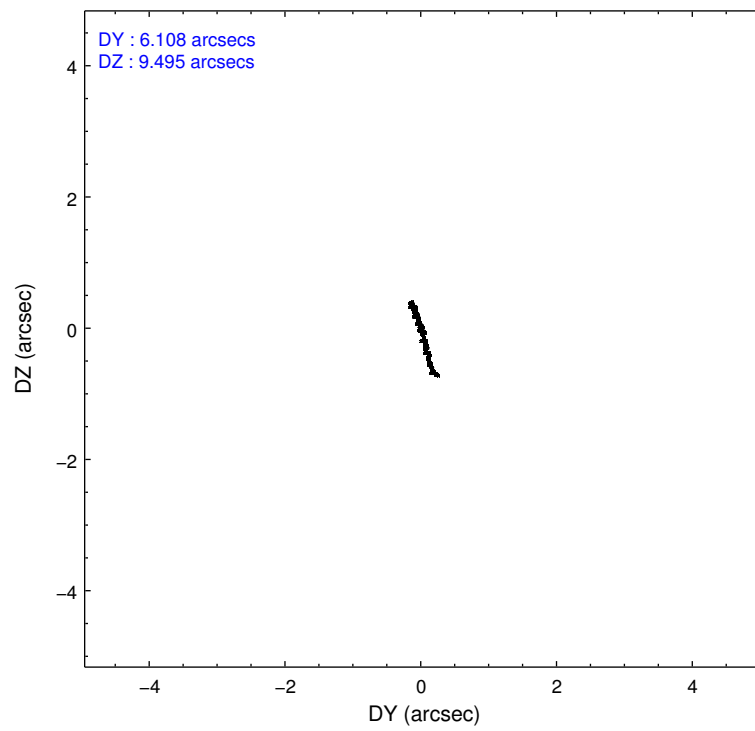
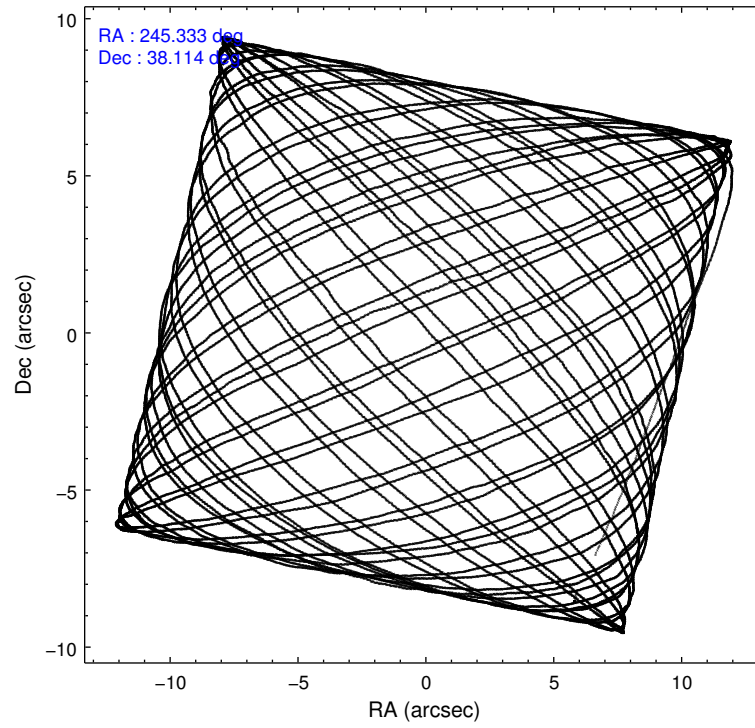
	ccd 0	ccd 1	ccd 2	ccd 3	ccd 6
level 1 events	134009	147623	150598	149672	172787
rejected events	88736	91267	104824	99668	100887
rejected %	66%	61%	69%	66%	58%

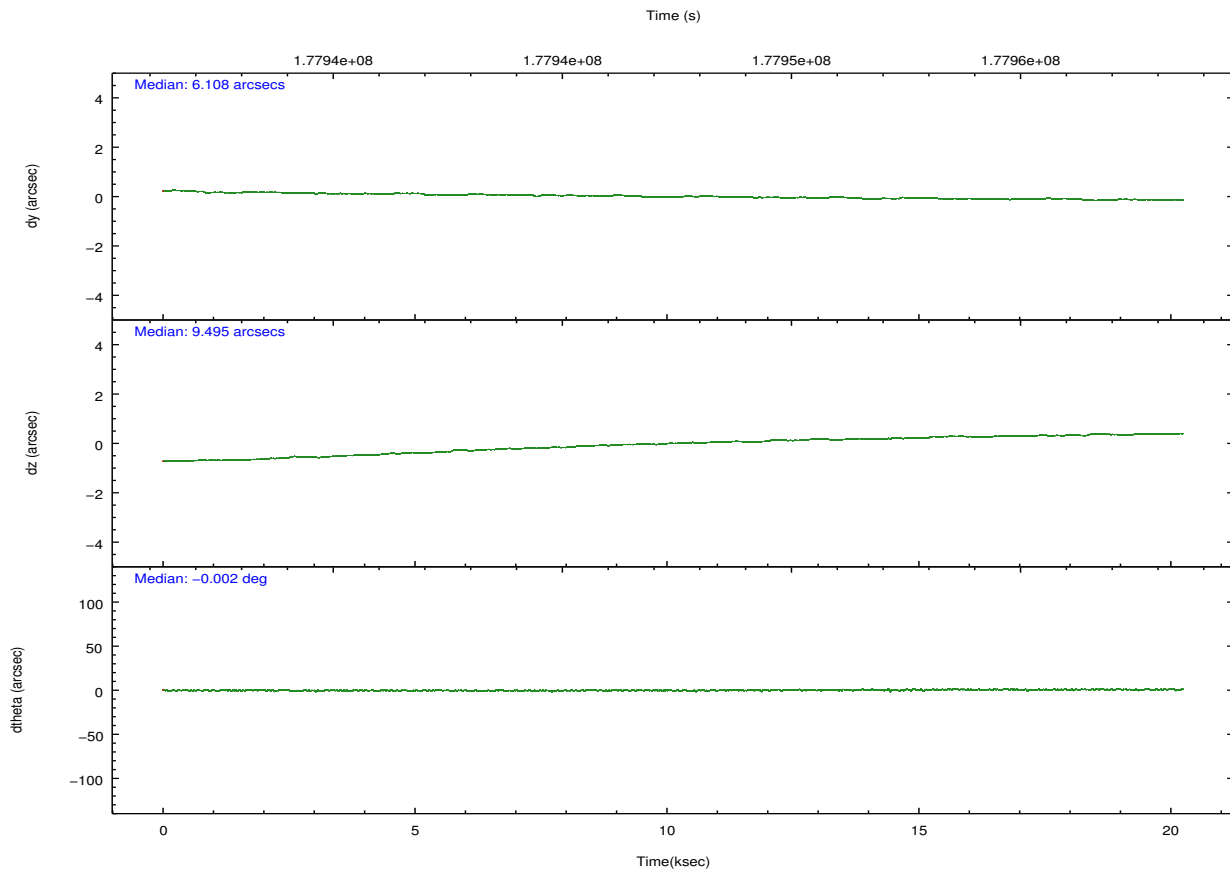
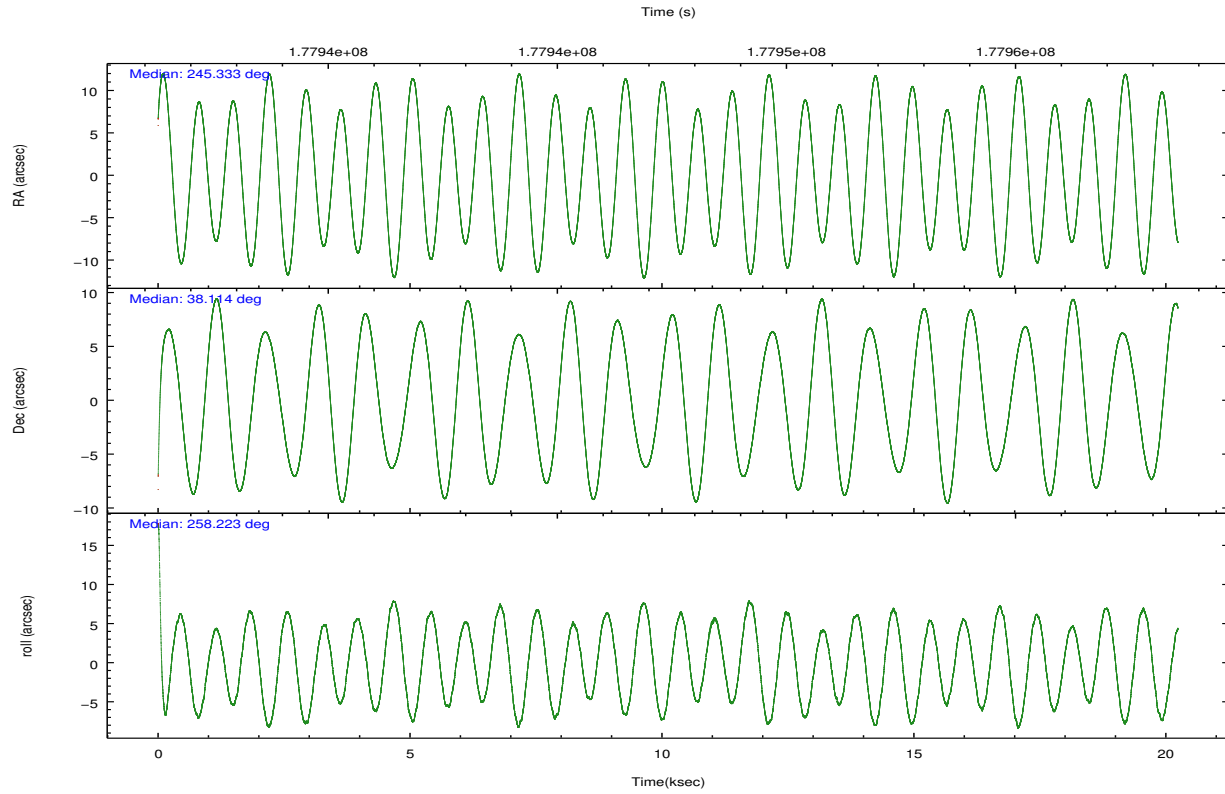
	ccd 0	ccd 1	ccd 2	ccd 3	ccd 6
grade 0 events	31740	39180	32657	35879	54555
	23%	26%	21%	23%	31%
grade 1 events	184	193	190	205	233
	0%	0%	0%	0%	0%
grade 2 events	5942	8166	5682	6060	7794
	4%	5%	3%	4%	4%
grade 3 events	2252	2503	2188	2319	2805
	1%	1%	1%	1%	1%
grade 4 events	2143	2369	2214	2444	2718
	1%	1%	1%	1%	1%
grade 5 events	3853	4121	3668	4122	4184
	2%	2%	2%	2%	2%
grade 6 events	3213	4157	3045	3313	4056
	2%	2%	2%	2%	2%
grade 7 events	84682	86934	100954	95330	96442
	63%	58%	67%	63%	55%

2.2 Compared Parameters

Parameter	Planned	Actual	Parameter	Planned	Actual
Instrument	ACIS	ACIS	Obspar format version number	7	7
Detector	ACIS-01236	ACIS-01236	Obspar file type	PREDICTED	ACTUAL
Grating	NONE	NONE	Obspar update status	NONE	UPDATED
Data mode	VFAINT	VFAINT	Number of optional ACIS chips dropped	0	0
Observation mode	POINTING	POINTING	On-chip summing requested	N	N
[deg] Pointing RA	245.322417	245.3334570426962	Subarray requested	NONE	NONE
[deg] Pointing Dec	38.140254	38.11427878955486	Alternating exposures requested	N	N
[deg] Pointing Roll	258.027111	258.2289980599534	[s] Primary exposure time	0.000000	3.1
[mm] SIM focus pos	-0.782348	-0.7809083437167272			
[mm] SIM defocus	0	0.001439871863259334			
[mm] SIM translation stage pos	-225.840463	-225.8458576473255			
[mm] SIM translation stage offset	-7.752	-7.746595355604228			
[s] Observation start time (MET)	177937542.184000	177936549.84519			
Observation start date	2003-08-22T11:04:38	2003-08-22T10:49:09			
[s] Observation end time (MET)	177957536.184000	177957850.8836			
Observation end date	2003-08-22T16:37:52	2003-08-22T16:44:10			
Read mode	TIMED	TIMED			

2.3 Aspect



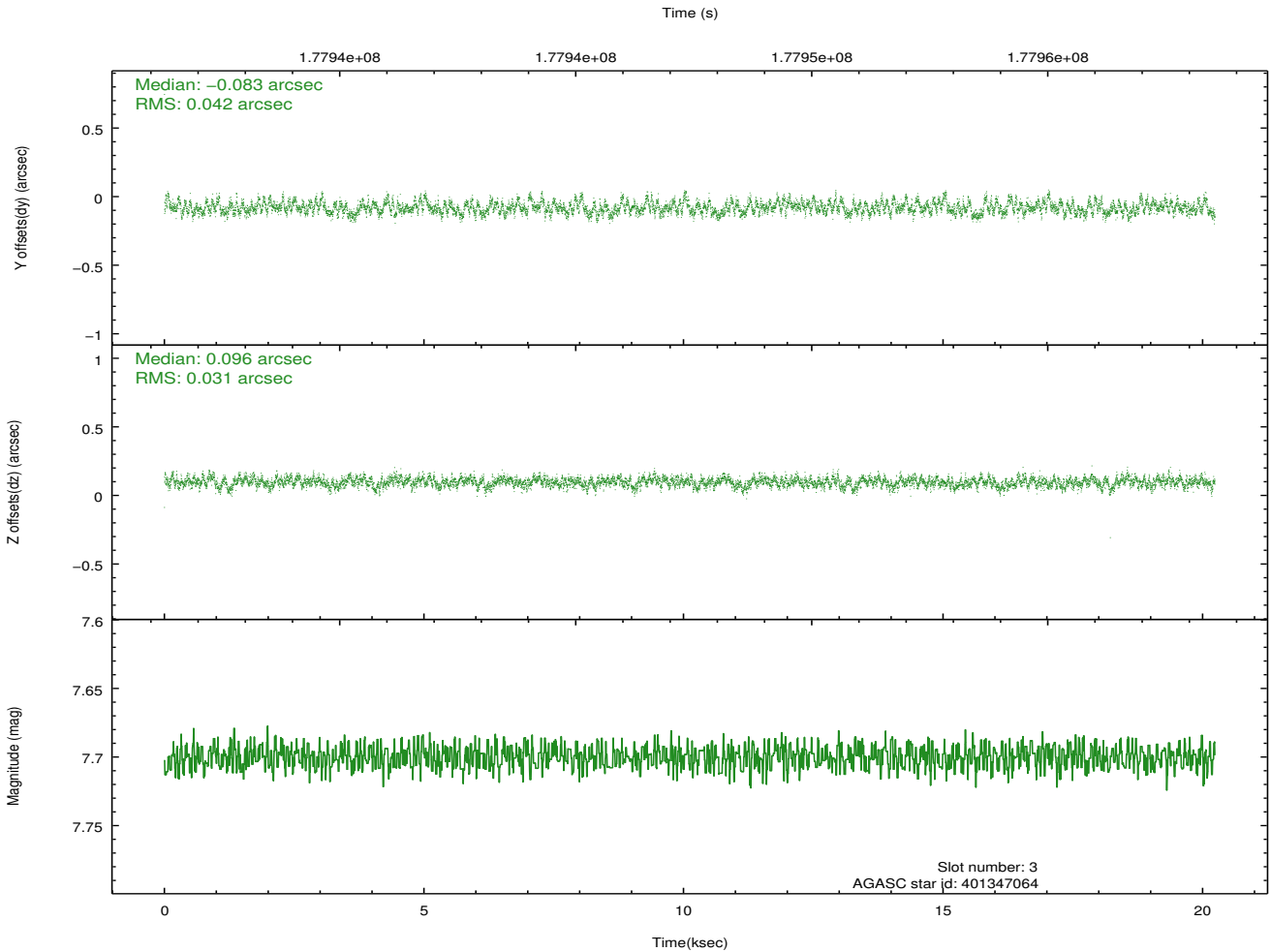
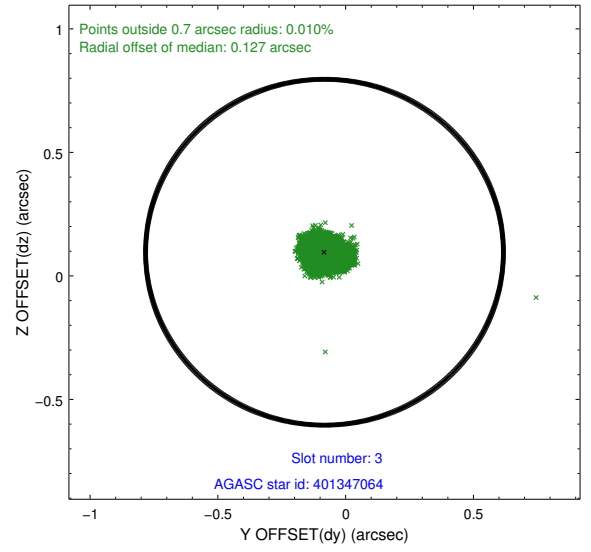
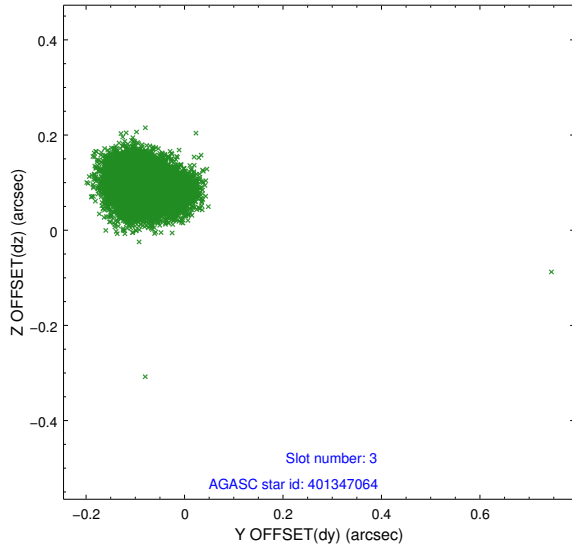


Slot Statistics

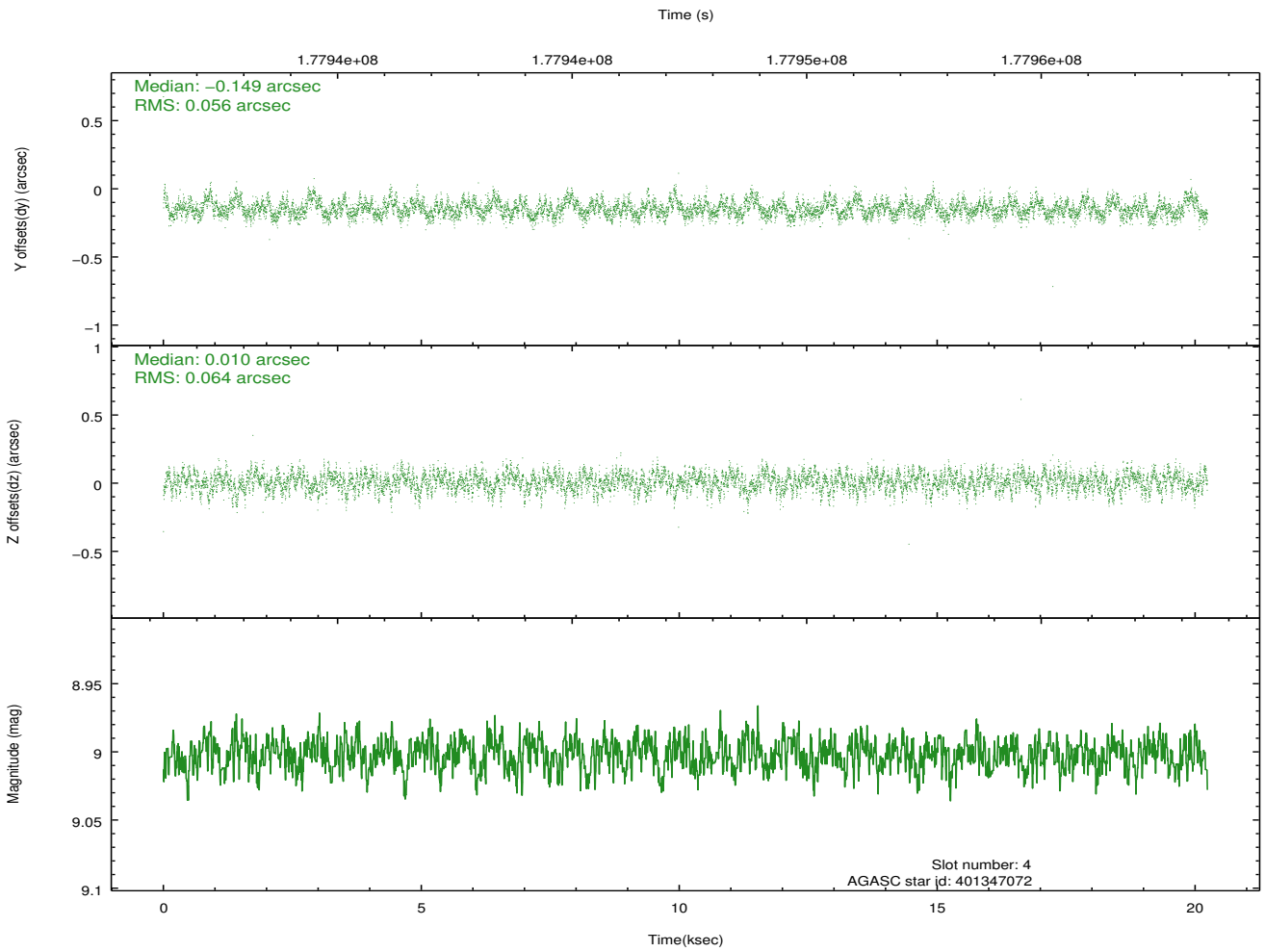
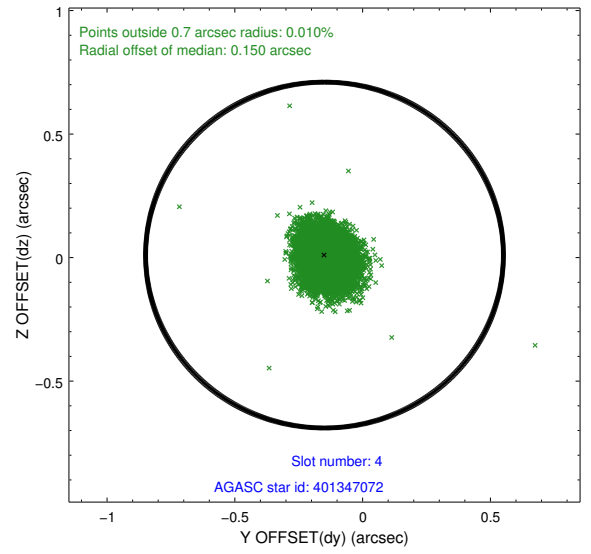
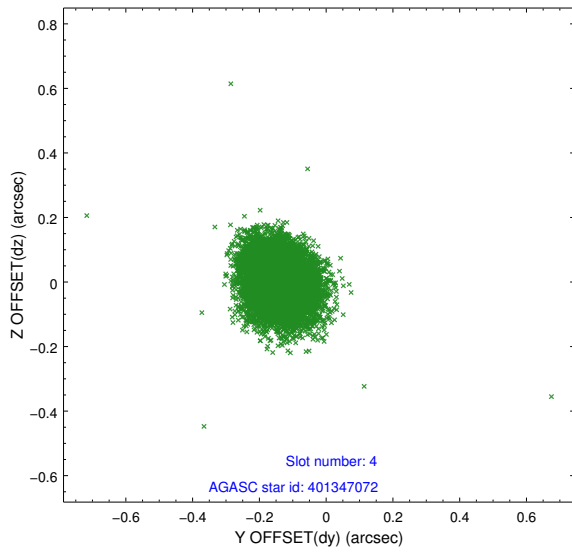
slot	status	id	mag	n_pts	med_dy	med_dz	dr1	dr2	ra	dec	mean_y	mean_z
0	FID	ACIS-I-1	7.23	4935	0.072	-0.059	0.007	0.012	0.000000	0.000000	933.51	-991.96
1	FID	ACIS-I-5	7.22	4935	-0.202	0.072	0.007	0.011	0.000000	0.000000	-1814.77	905.53
2	FID	ACIS-I-6	7.25	4935	0.038	0.058	0.008	0.014	0.000000	0.000000	398.82	1550.24
3	GUIDE	401347064	7.70	9871	-0.083	0.096	0.055	0.088	245.989801	38.641750	-2161.83	1460.04
4	GUIDE	401347072	9.00	9867	-0.149	0.010	0.089	0.144	244.804822	38.793671	-2003.56	-1909.31
5	GUIDE	401352992	9.63	9864	0.128	-0.010	0.101	0.163	244.701659	37.819192	1491.73	-1488.07
6	GUIDE	401357120	7.08	9870	0.036	0.009	0.053	0.084	244.752378	37.765715	1651.69	-1307.95
7	GUIDE	401357888	8.52	9867	0.066	-0.104	0.080	0.122	244.567474	38.275306	-40.55	-2189.68

2.4 Star Slots

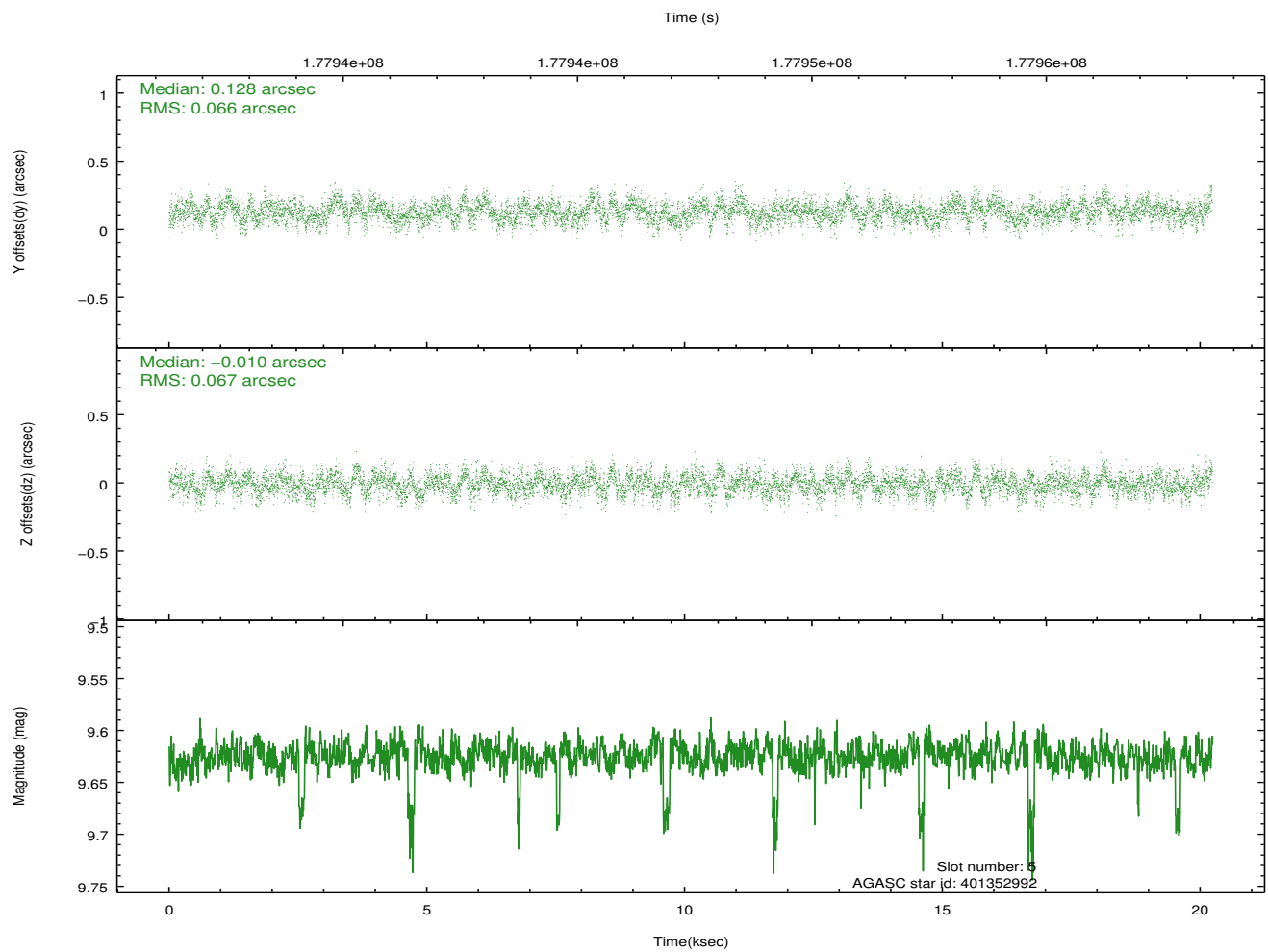
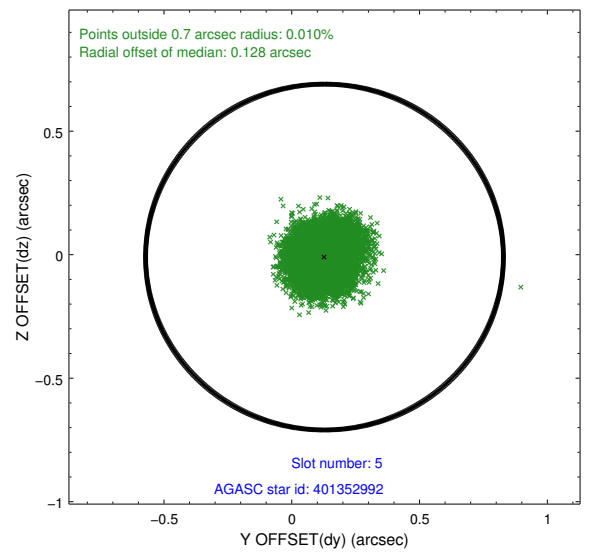
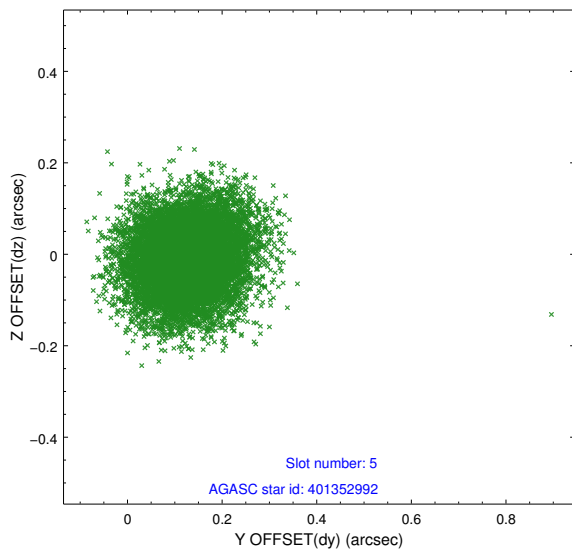
2.4.1 Slot 3



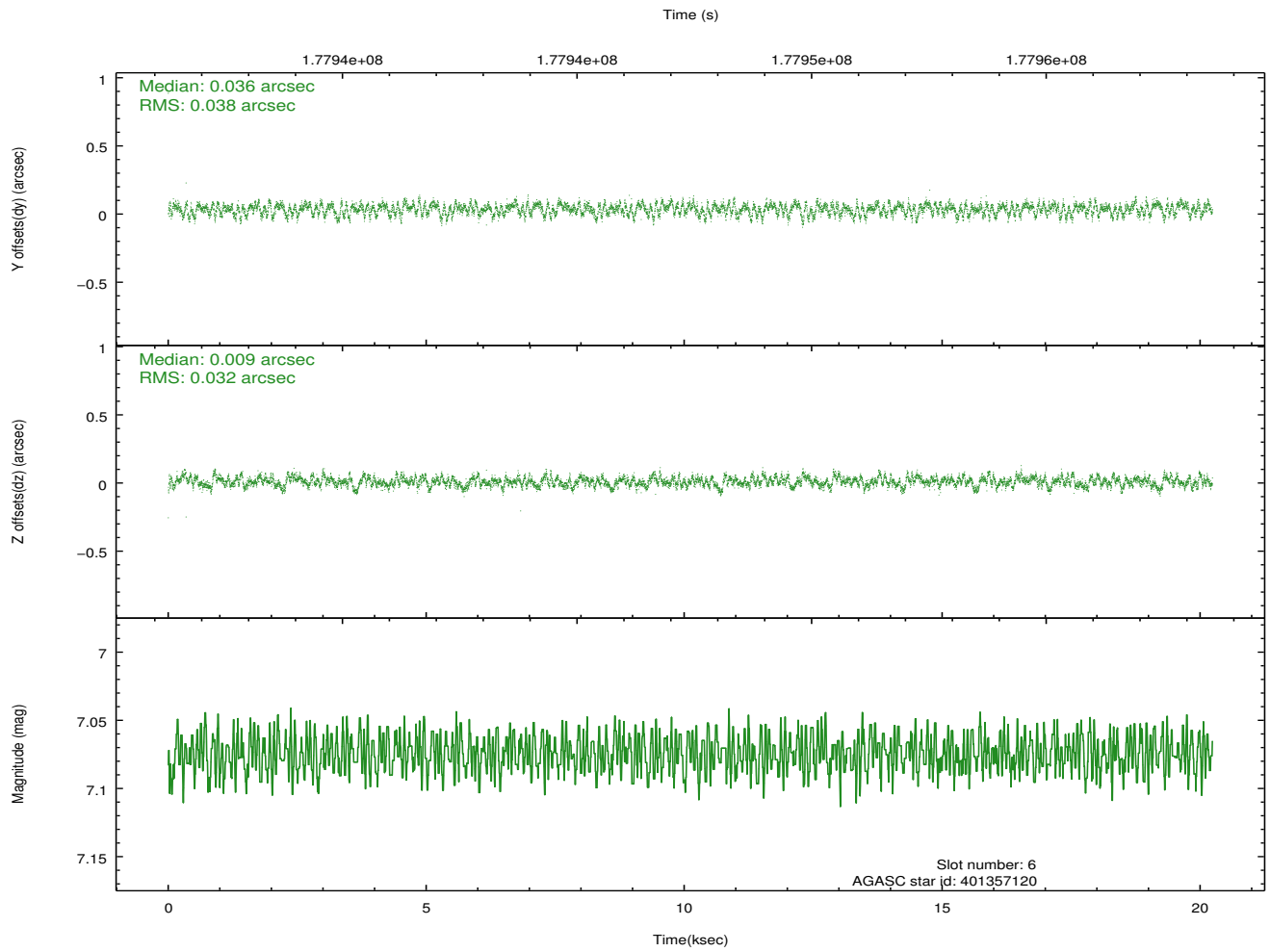
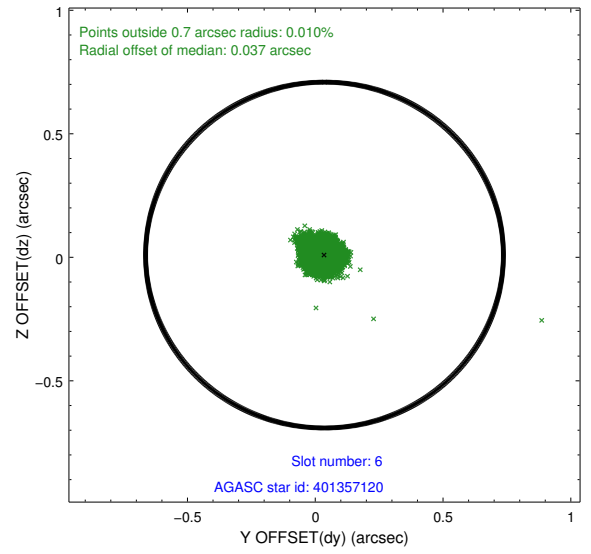
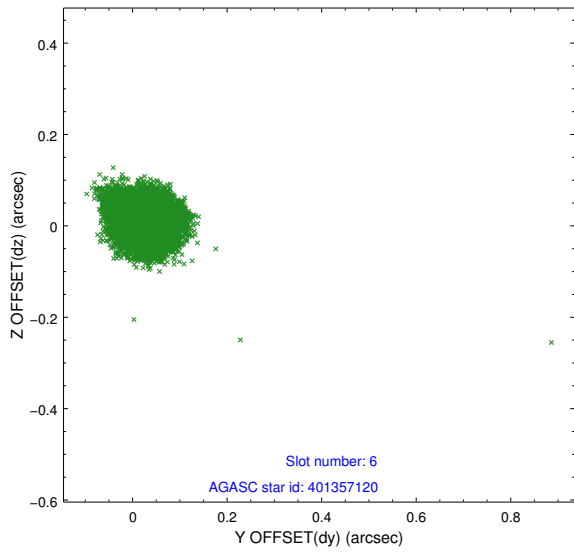
2.4.2 Slot 4



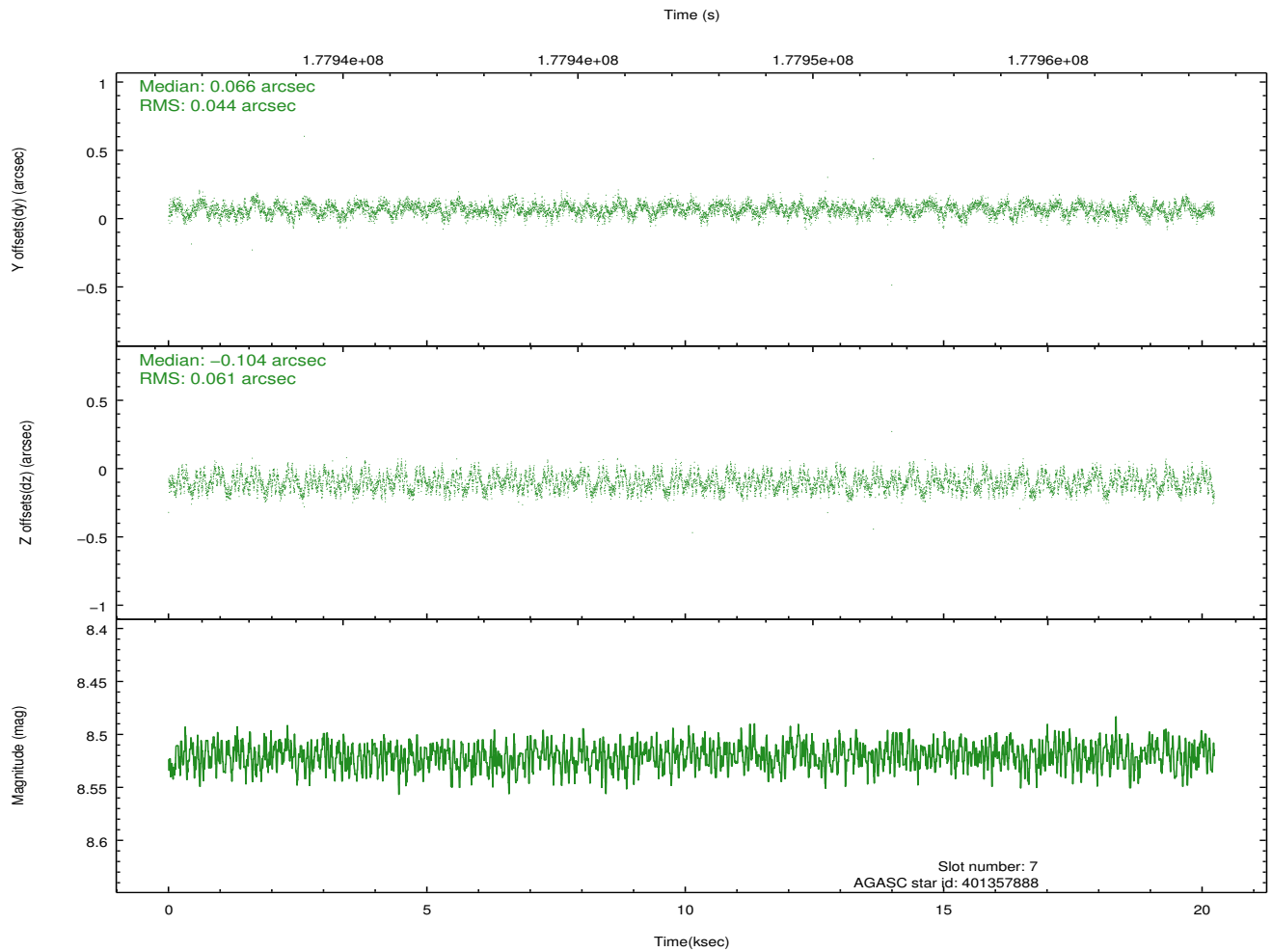
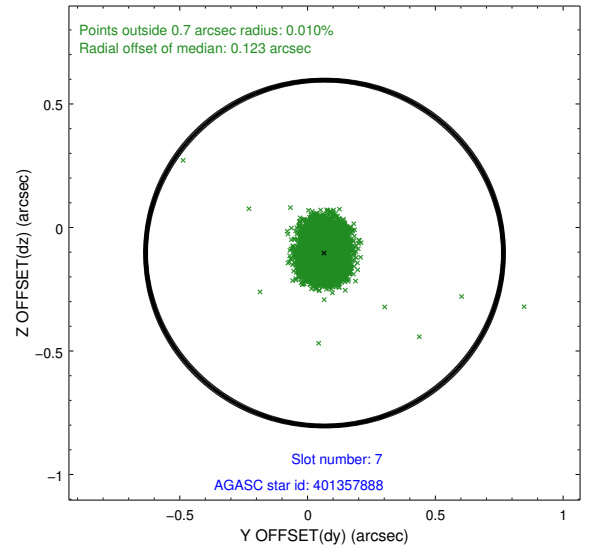
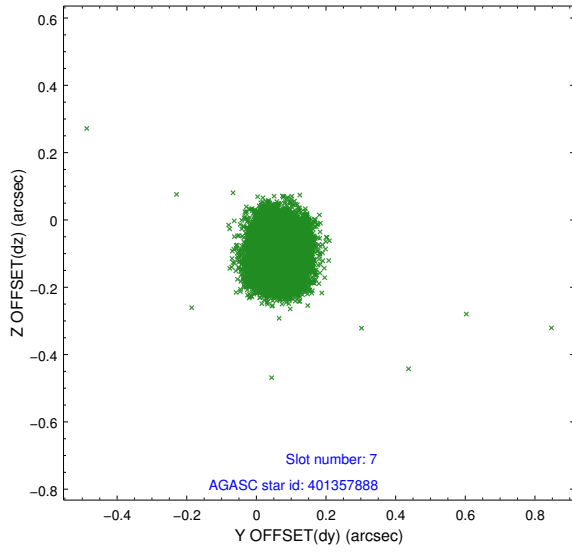
2.4.3 Slot 5



2.4.4 Slot 6

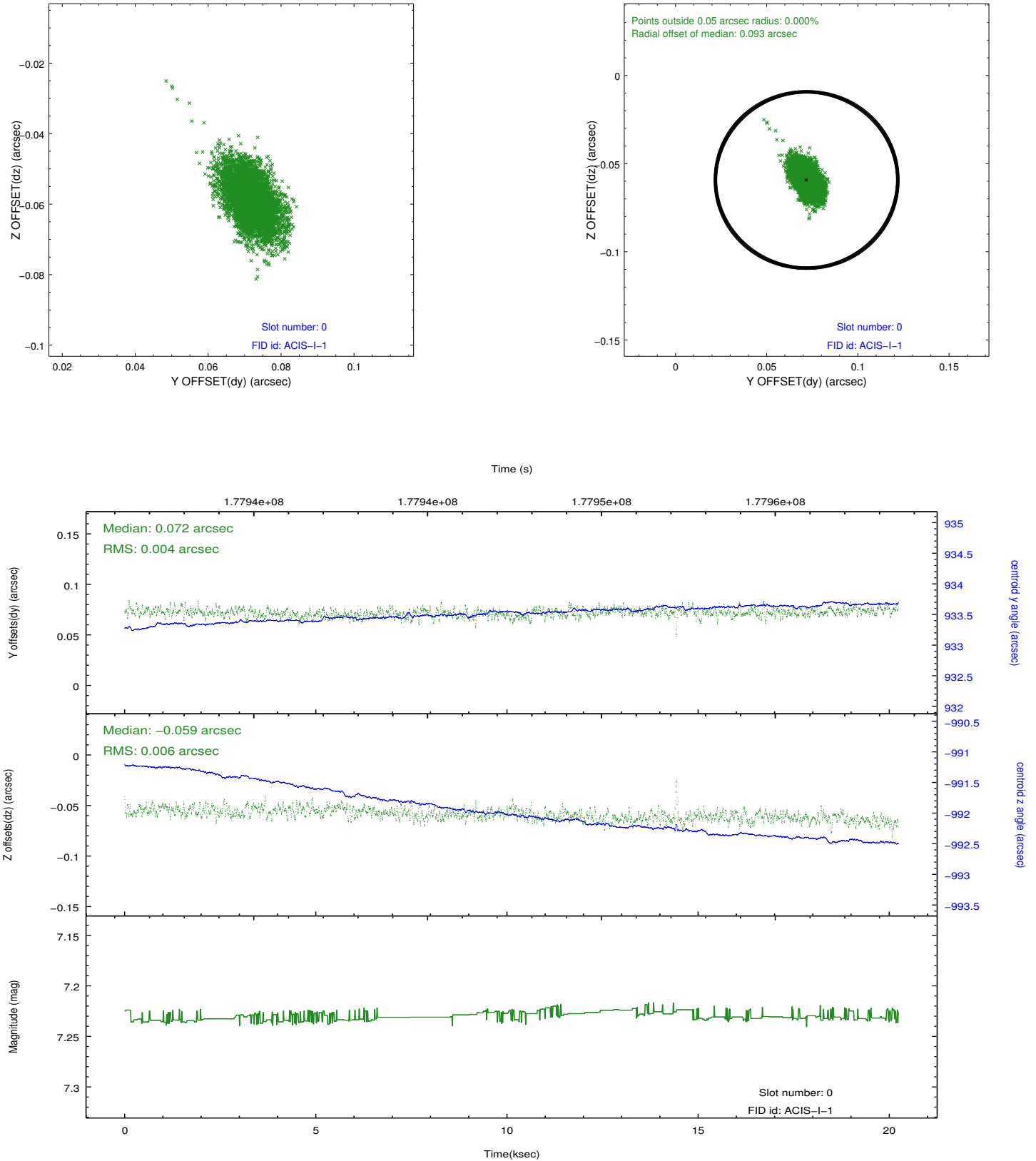


2.4.5 Slot 7

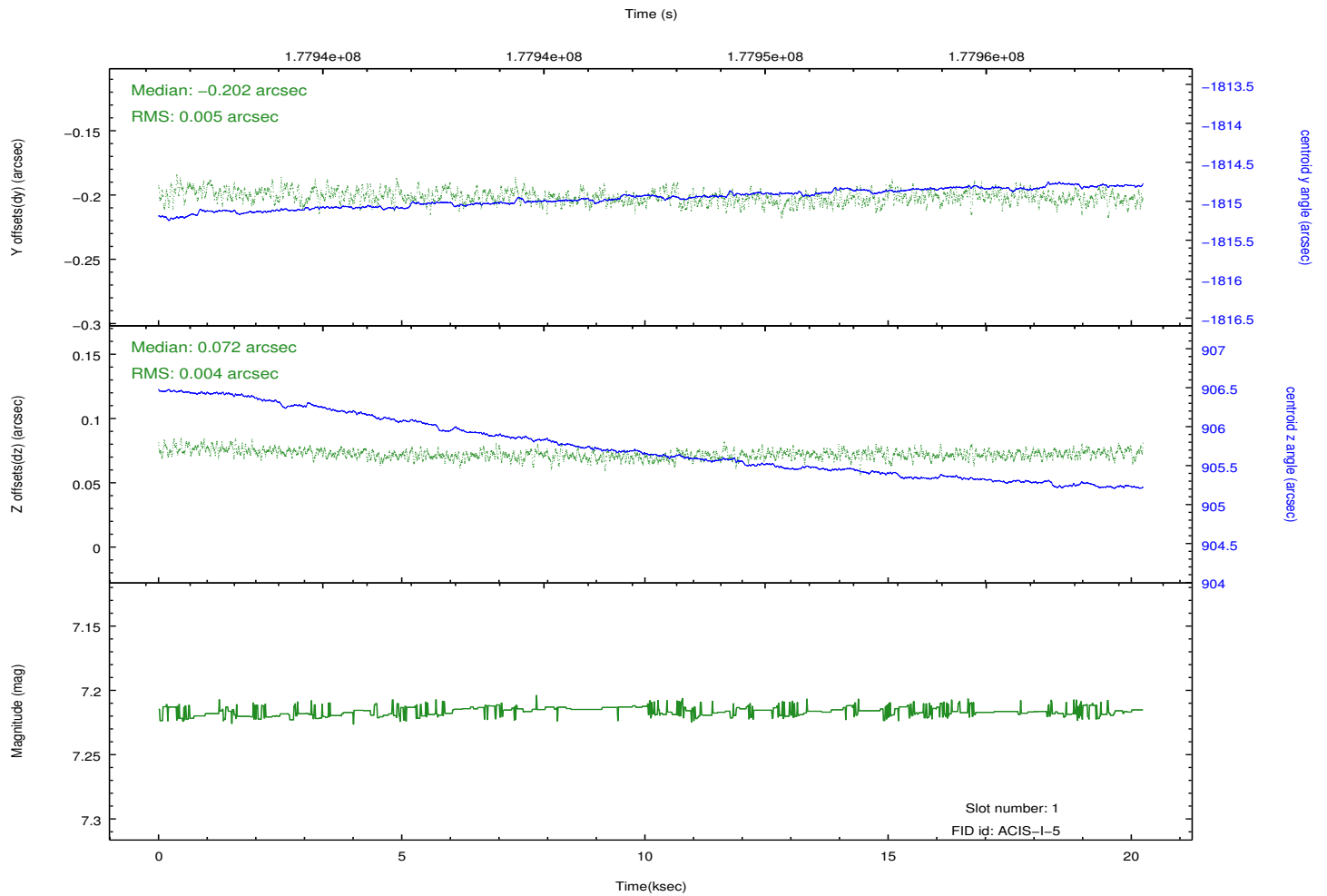
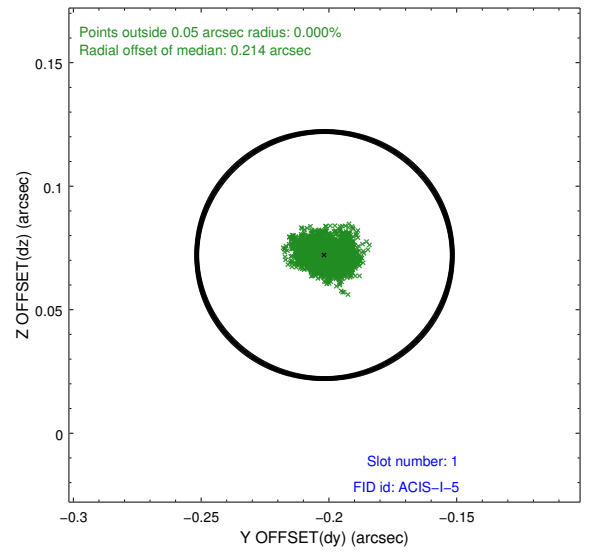
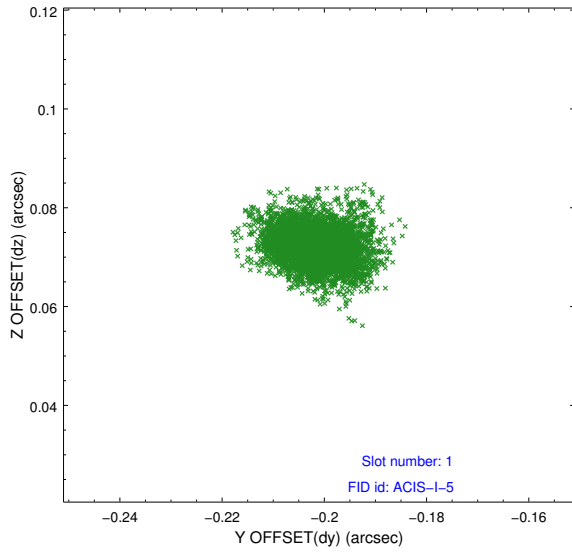


2.5 FID Slots

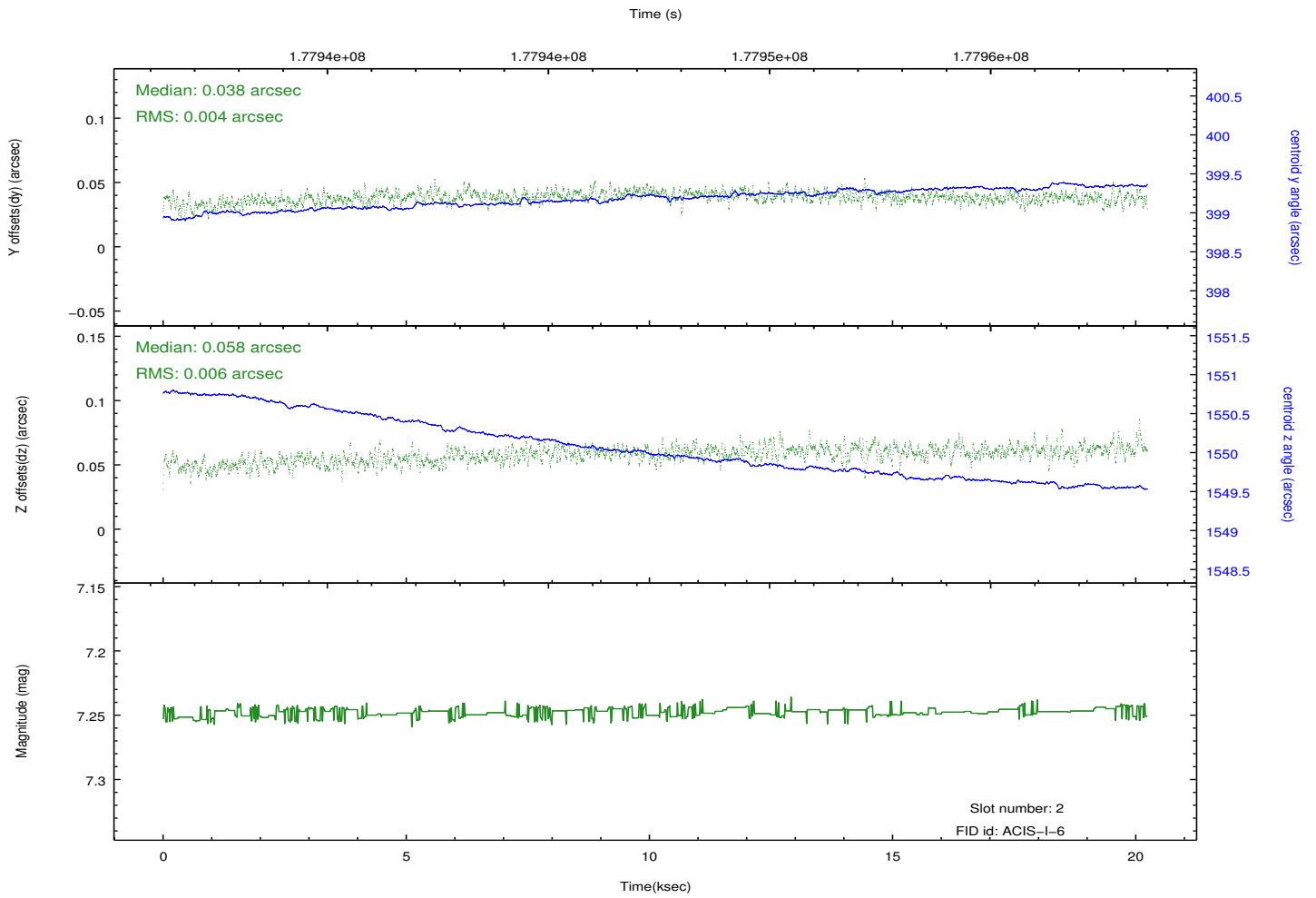
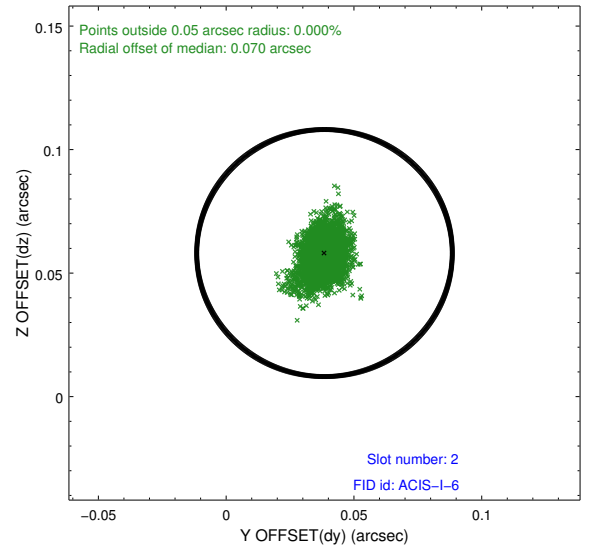
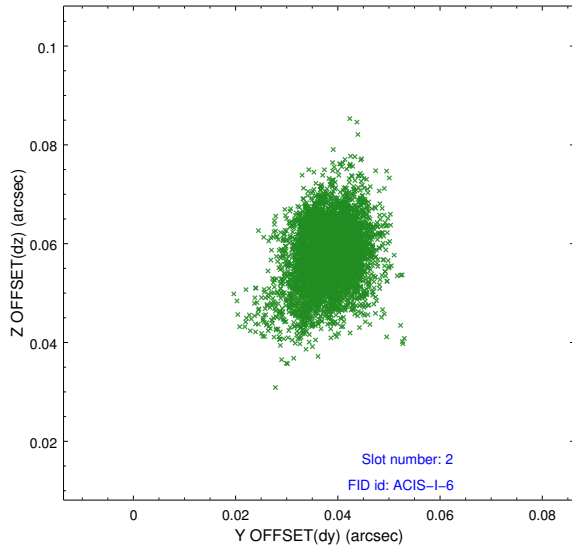
2.5.1 Slot 0



2.5.2 Slot 1



2.5.3 Slot 2



A Summary

A.1 Status

V&V Scientist	Jen Lauer
V&V Date (YYYY-MM-DD)	2012.11.28
V&V Edition	1
V&V Disposition and Status	OK
V&V Charge Time	19.99

A.2 Comments