

V&V Reference Report

L2 ASCDS Version : 8.4.5

Observation 3864 - L2 Version 3
Chandra X-Ray Center

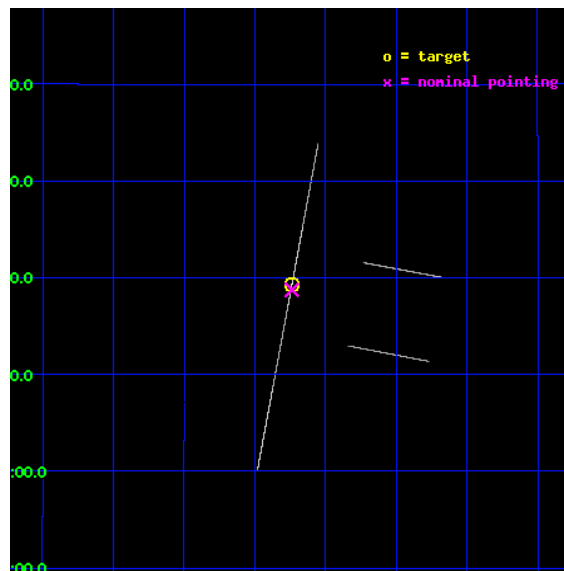
L2 Processing Date : Nov 5 2012

Contents

1	Front	2
2	OBI	3
2.1	OBI	3
2.1.1	Images	3
2.1.2	Bias	3
2.1.3	Parameters	4
2.1.4	Events	4
2.2	Compared Parameters	5
2.3	Aspect	6
2.4	Star Slots	9
2.4.1	Slot 3	9
2.4.2	Slot 4	10
2.4.3	Slot 5	11
2.4.4	Slot 6	12
2.4.5	Slot 7	13
2.5	FID Slots	14
2.5.1	Slot 0	14
2.5.2	Slot 1	15
2.5.3	Slot 2	16
A	Summary	17
A.1	Status	17
A.2	Comments	17

1 Front

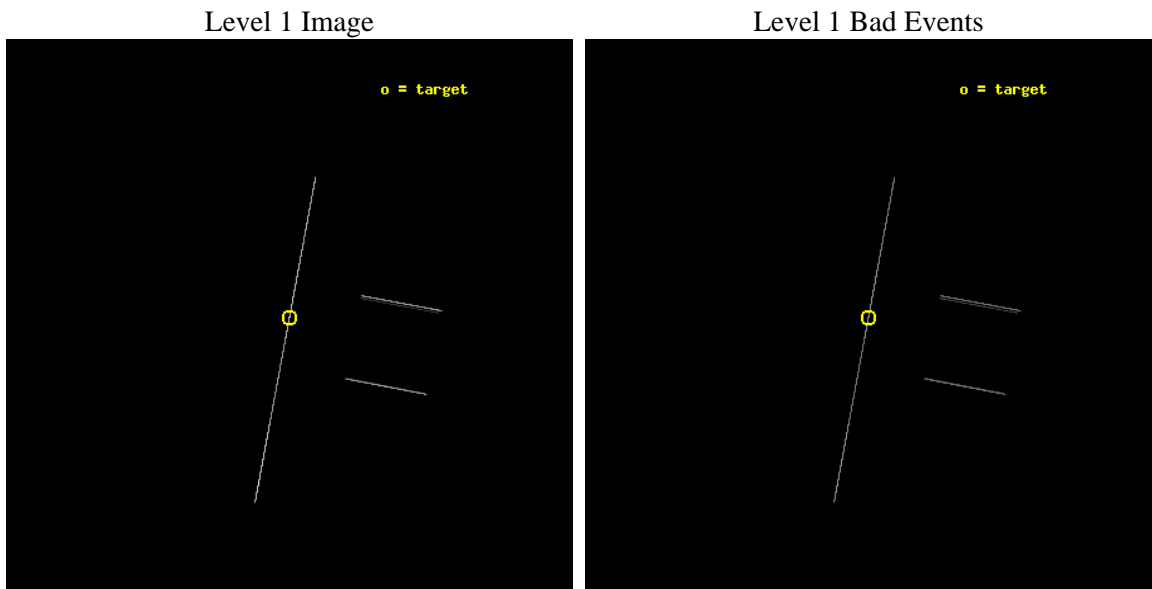
seq_num	500343	Sequence number
obs_id	3864	Observation id
title	PROBING THE NATURE OF THE TORQUE VARIABILITY IN SGR 1900+14	Propos
observer	Dr. Peter Woods	Principal investigator
object	SGR 1900+14	Source name
ra_targ	286.809583	Observer's specified target RA [deg]
dec_targ	9.32225	Observer's specified target Dec [deg]
ra_nom	286.80968031579	Nominal RA [deg]
dec_nom	9.3125941432711	Nominal Dec [deg]
roll_nom	280.62159547585	Nominal Roll [deg]
revision	3	Processing version of data
ontime	25399.33235386	Sum of GTIs [s]
livetime	25300.116211853	Livetime [s]
ontime2	25399.330223858	Sum of GTIs [s]
ontime3	25399.333091527	Sum of GTIs [s]
ontime5	25399.332351625	Sum of GTIs [s]
ontime6	25399.332352936	Sum of GTIs [s]
ontime7	25399.33235386	Sum of GTIs [s]
ontime8	25397.873583227	Sum of GTIs [s]
l2events	301821	Number of level 2 events



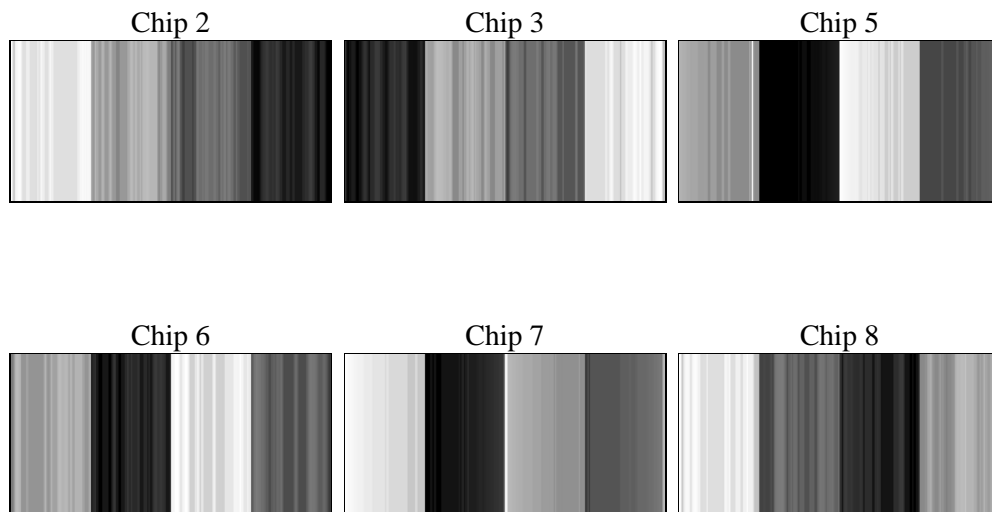
2 OBI

2.1 OBI

2.1.1 Images



2.1.2 Bias



2.1.3 Parameters

obi_num	0	Obi number	sched_exp_time	25000.000000	[s] Scheduled observation exposure time
ascdsver	8.4.5	Processing system revision	ontime	25399.33235386	Sum of GTIs [s]
caldbver	4.5.2	 	ontime2	25399.330223858	Sum of GTIs [s]
date	2012-11-05T19:59:04	Date and time of file creation	ontime3	25399.333091527	Sum of GTIs [s]
revision	3	Processing version of data	ontime5	25399.332351625	Sum of GTIs [s]
			ontime6	25399.332352936	Sum of GTIs [s]
			ontime7	25399.33235386	Sum of GTIs [s]
			ontime8	25397.873583227	Sum of GTIs [s]
			l1events	476611	Number of level 1 events

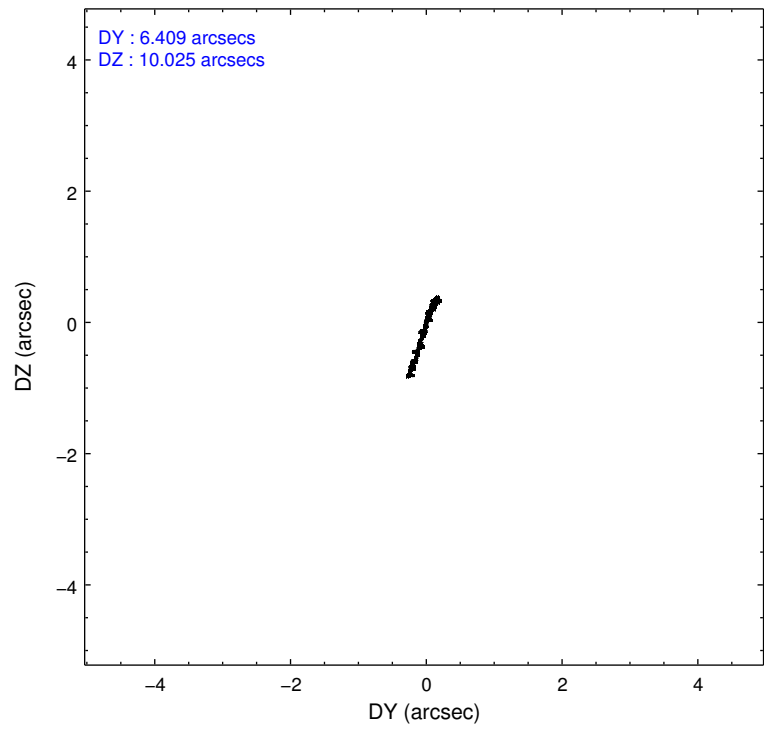
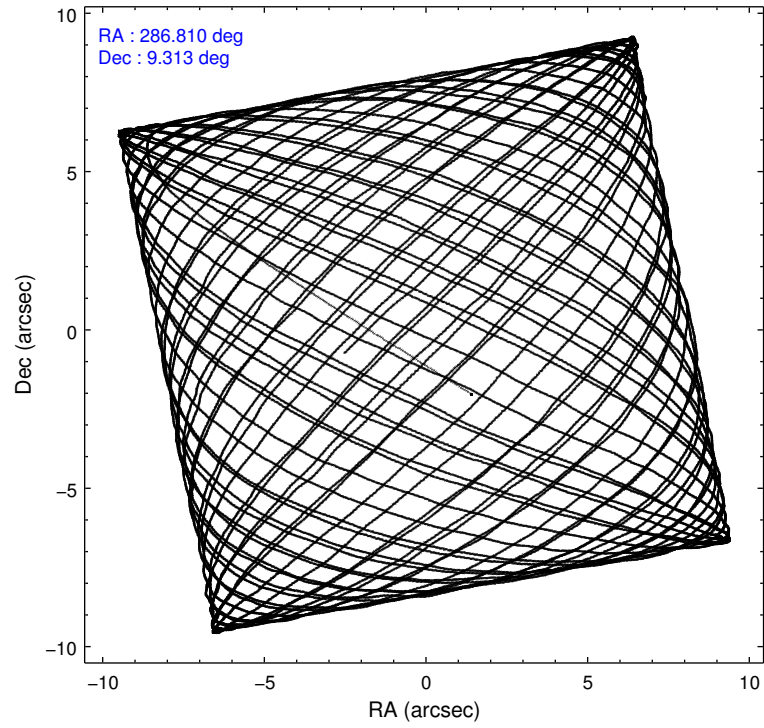
2.1.4 Events

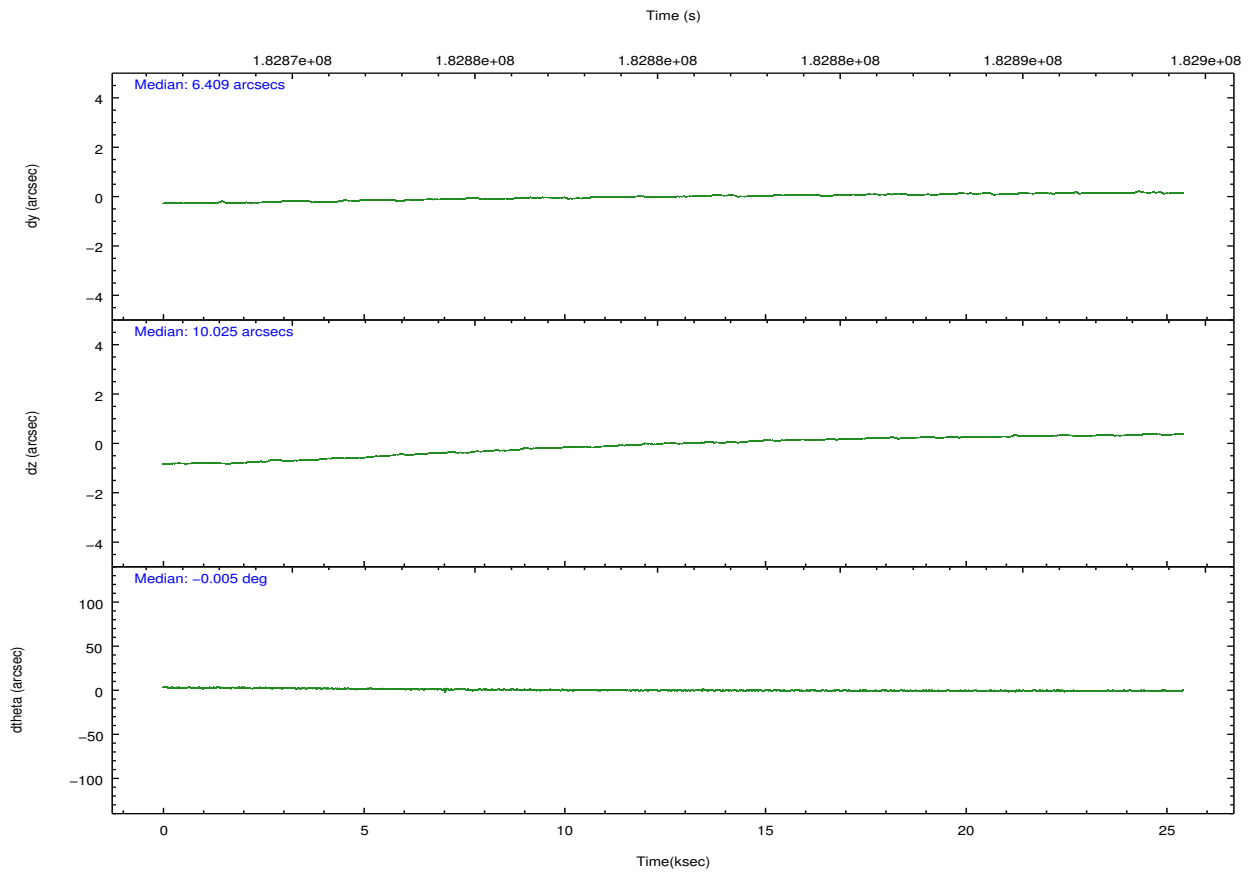
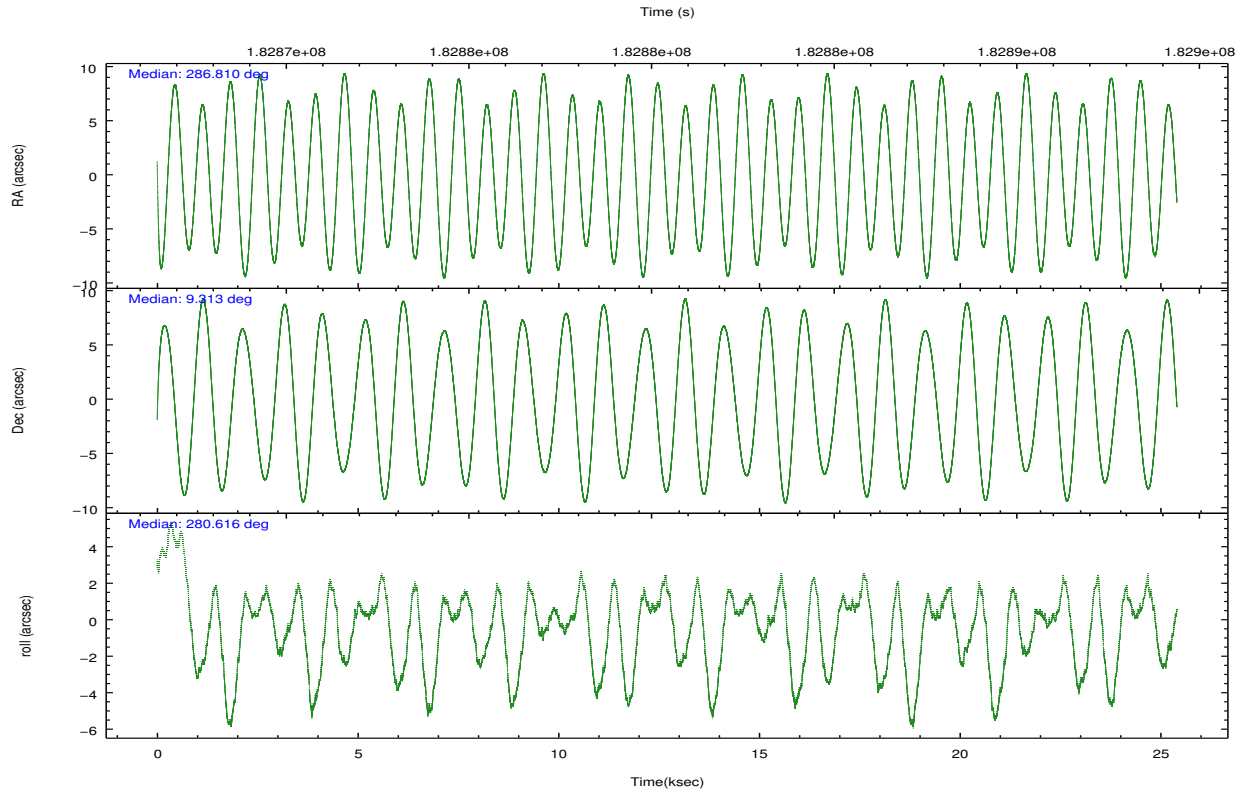
	ccd 2	ccd 3	ccd 5	ccd 6	ccd 7	ccd 8		ccd 2	ccd 3	ccd 5	ccd 6	ccd 7	ccd 8
level 1 events	33614	36149	176916	36353	121967	71612	grade 0 events	3906	3908	45612	3299	10366	11542
rejected events	6707	7452	20526	7730	22367	11424		11%	10%	25%	9%	8%	16%
rejected %	19%	20%	11%	21%	18%	15%	grade 1 events	136	138	258	138	312	251
								0%	0%	0%	0%	0%	0%
							grade 2 events	10197	11117	42998	11347	24930	19069
								30%	30%	24%	31%	20%	26%
							grade 3 events	3803	4346	3408	3862	8062	7424
								11%	12%	1%	10%	6%	10%
							grade 4 events	3749	3706	3213	3745	7818	7019
								11%	10%	1%	10%	6%	9%
							grade 5 events	5905	6580	16009	6936	19649	9846
								17%	18%	9%	19%	16%	13%
							grade 6 events	5918	6354	65418	7026	50830	16461
								17%	17%	36%	19%	41%	22%
							grade 7 events	0	0	0	0	0	0
								0%	0%	0%	0%	0%	0%

2.2 Compared Parameters

Parameter	Planned	Actual	Parameter	Planned	Actual
Instrument	ACIS	ACIS	Obspar format version number	7	7
Detector	ACIS-235678	ACIS-235678	Obspar file type	PREDICTED	ACTUAL
Grating	NONE	NONE	Obspar update status	NONE	UPDATED
Data mode	CC33_FAINT	CC33_FAINT	Number of optional ACIS chips dropped	0	0
Observation mode	POINTING	POINTING	On-chip summing requested	N	N
[deg] Pointing RA	286.791424	286.80968031579	Subarray requested	NONE	NONE
[deg] Pointing Dec	9.333009	9.312594143271092	Alternating exposures requested	N	N
[deg] Pointing Roll	280.467928	280.6215954758471	[s] Primary exposure time	0.000000	0
[mm] SIM focus pos	-0.684267	-0.6828225247311905			
[mm] SIM defocus	0	0.001444936568705701			
[mm] SIM translation stage pos	-190.132523	-190.1425803651734			
[mm] SIM translation stage offset	0	0.01005778216563158			
[s] Observation start time (MET)	182868127.184000	182867055.28168			
Observation start date	2003-10-18T12:41:03	2003-10-18T12:24:15			
[s] Observation end time (MET)	182893127.184000	182893680.68283			
Observation end date	2003-10-18T19:37:43	2003-10-18T19:48:00			
Read mode	CONTINUOUS	CONTINUOUS			

2.3 Aspect



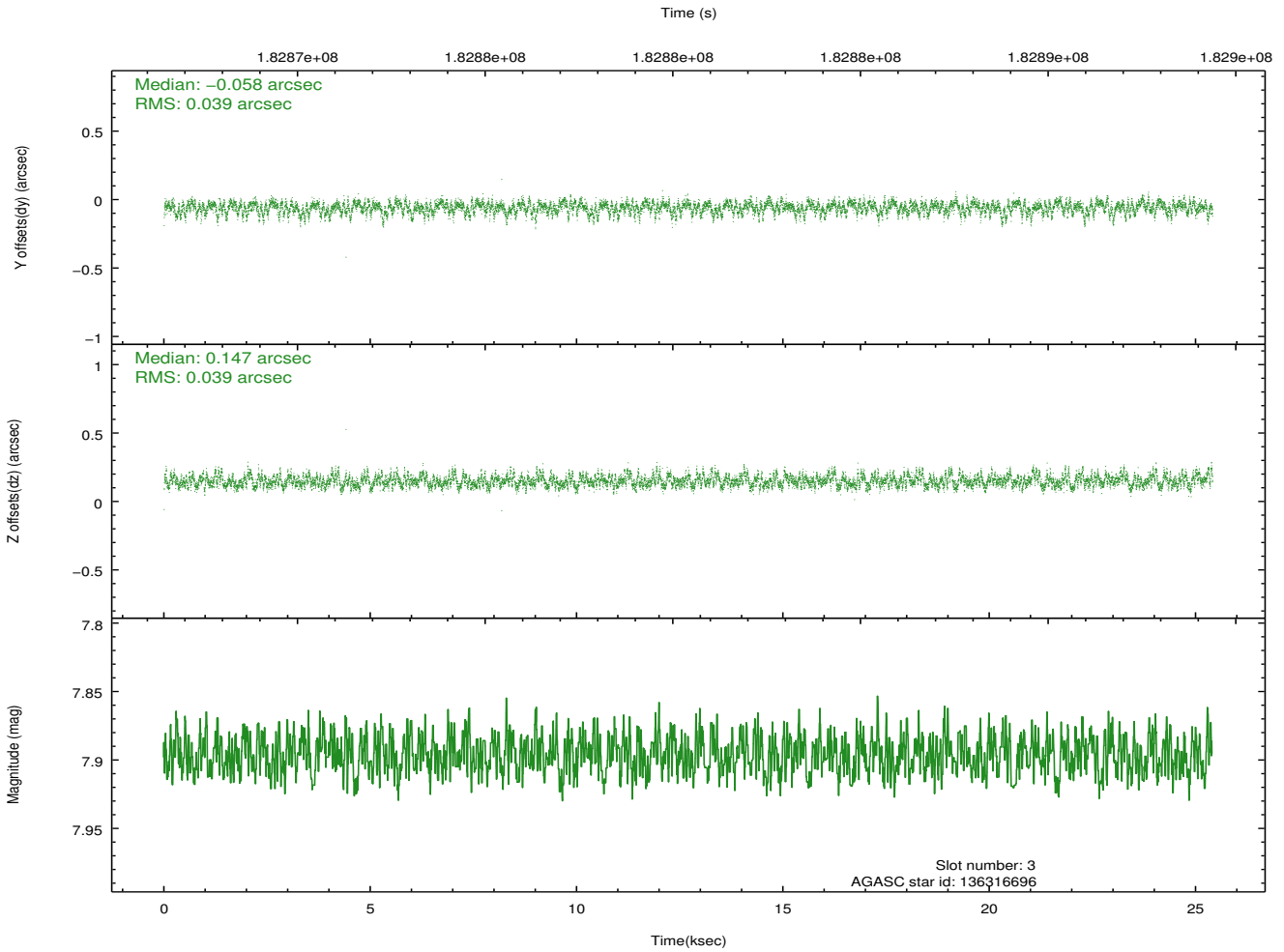
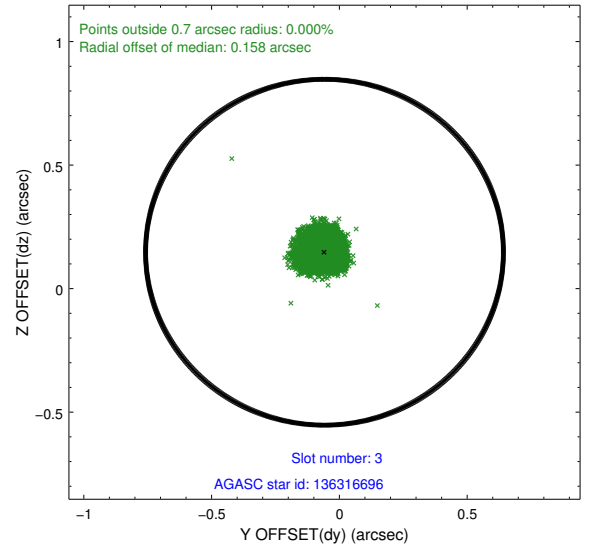
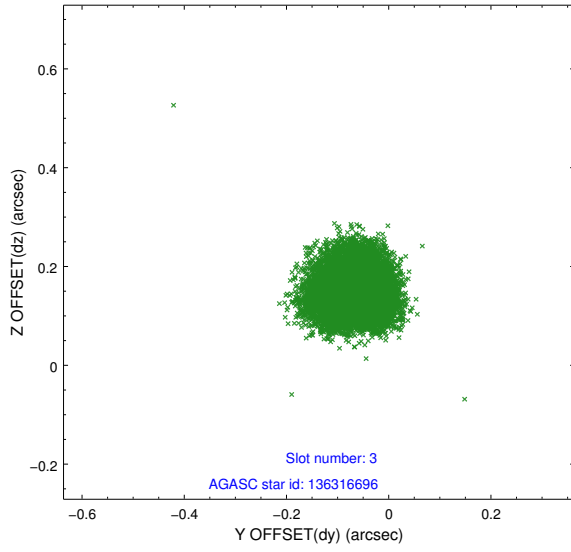


Slot Statistics

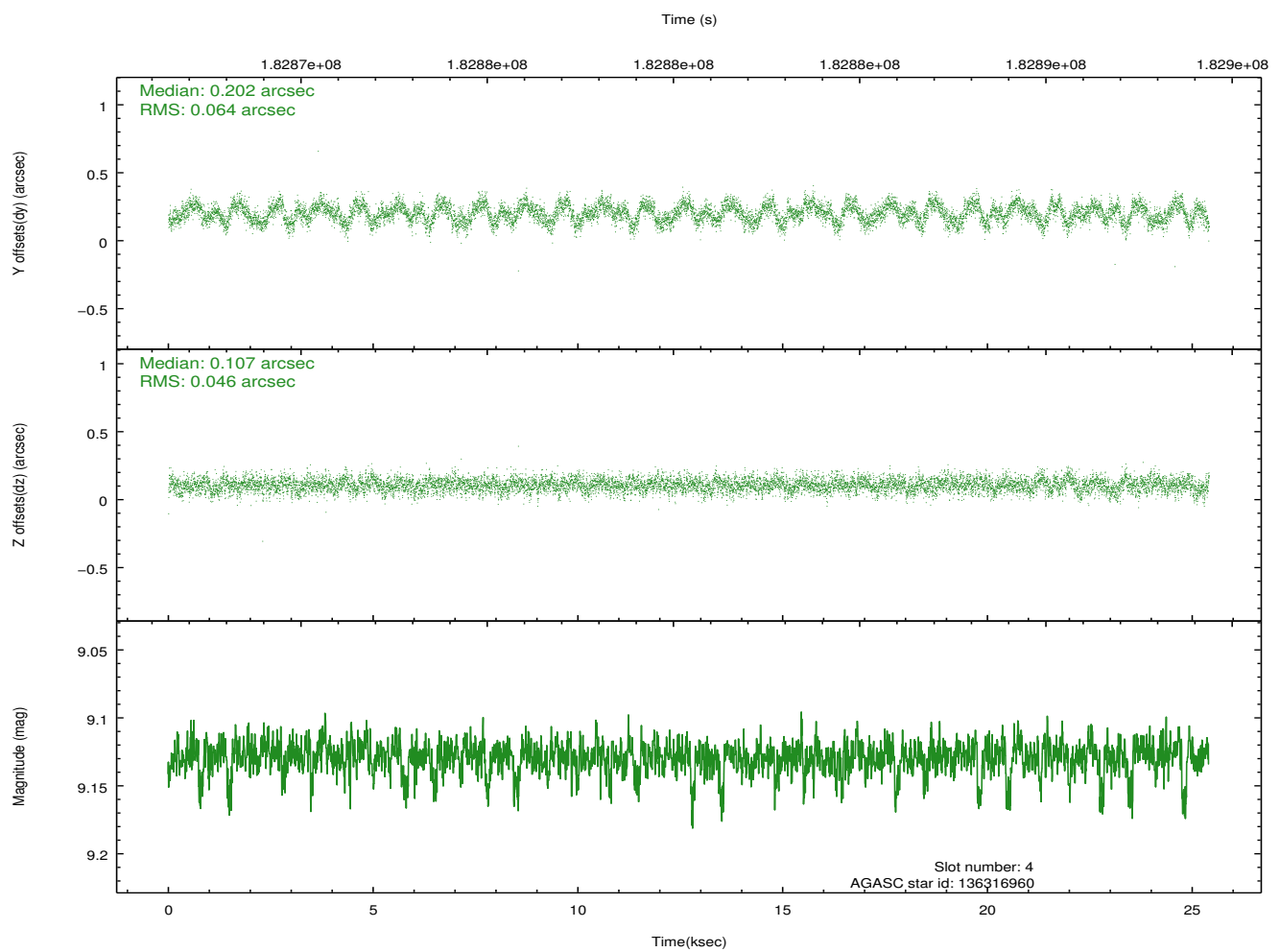
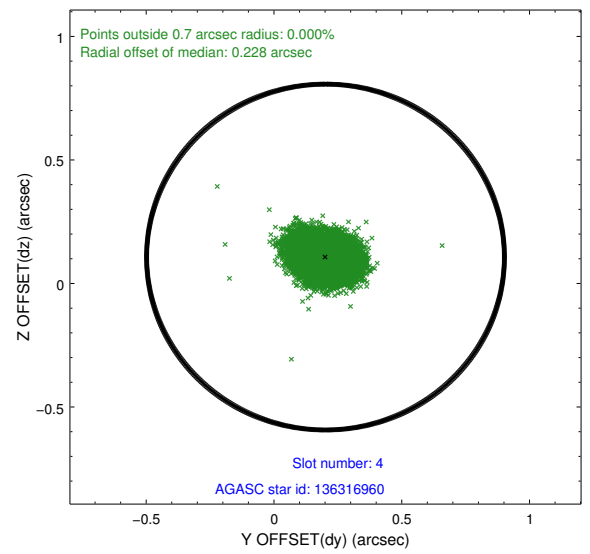
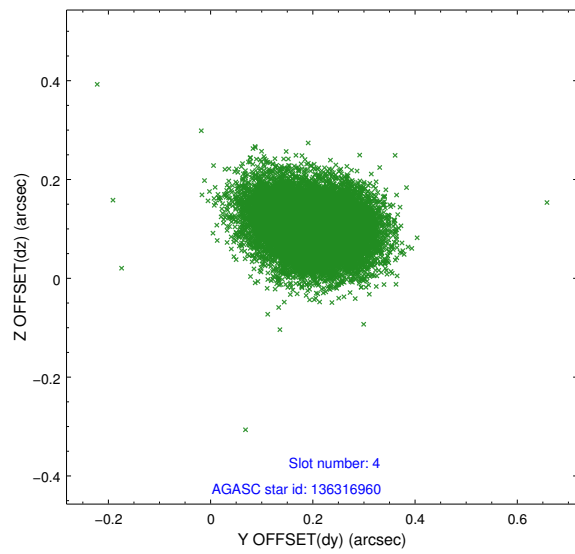
slot	status	id	mag	n_pts	med_dy	med_dz	dr1	dr2	ra	dec	mean_y	mean_z
0	FID	ACIS-S-2	7.10	6194	-0.059	-0.025	0.010	0.018	0.000000	0.000000	-759.16	-1731.14
1	FID	ACIS-S-4	7.20	6194	0.076	0.035	0.006	0.011	0.000000	0.000000	2154.18	177.32
2	FID	ACIS-S-5	7.23	6194	-0.048	-0.002	0.009	0.017	0.000000	0.000000	-1811.87	171.04
3	GUIDE	136316696	7.90	12390	-0.058	0.147	0.059	0.095	287.190166	9.367792	133.47	1415.79
4	GUIDE	136316960	9.13	12377	0.202	0.107	0.084	0.134	287.104881	9.133555	908.52	965.67
5	GUIDE	136323720	8.86	12386	0.153	-0.109	0.079	0.130	286.331708	8.774626	1679.52	-1973.32
6	GUIDE	136844512	7.38	12392	-0.159	0.028	0.056	0.086	286.436543	9.770401	-1777.29	-952.21
7	GUIDE	136845056	9.46	12384	-0.132	-0.174	0.080	0.132	286.321553	9.661191	-1465.63	-1425.26

2.4 Star Slots

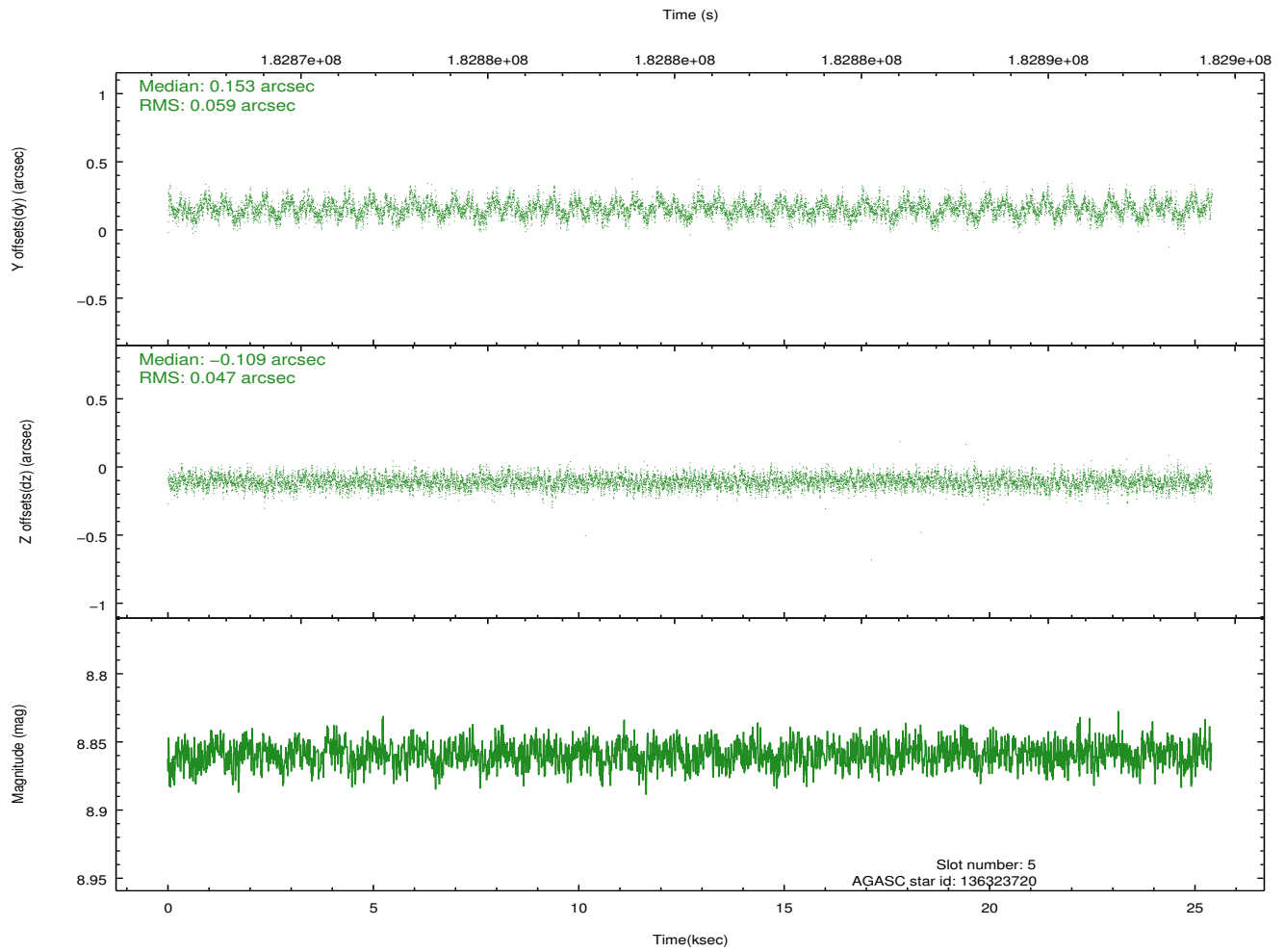
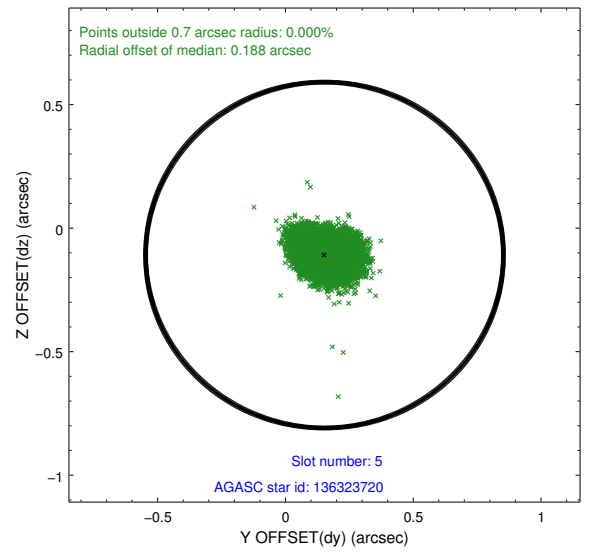
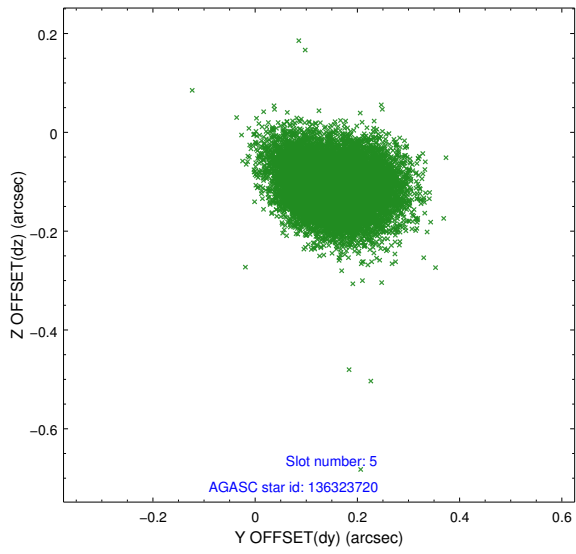
2.4.1 Slot 3



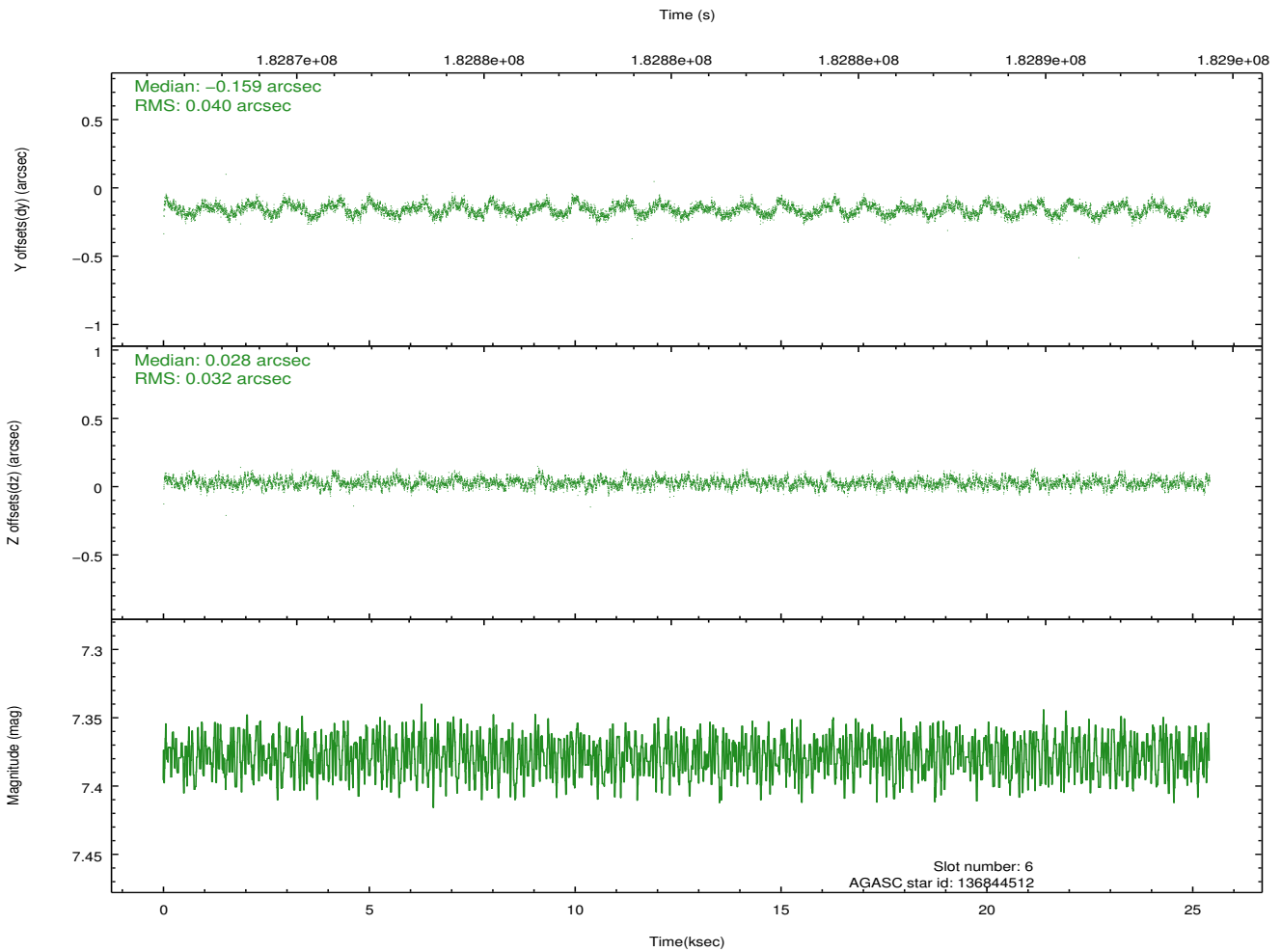
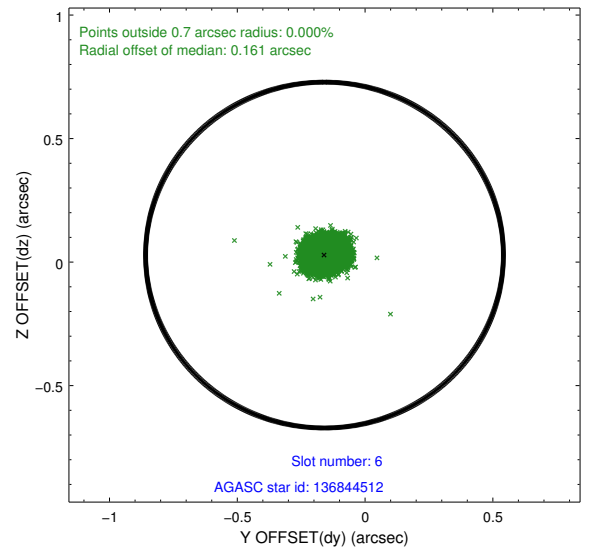
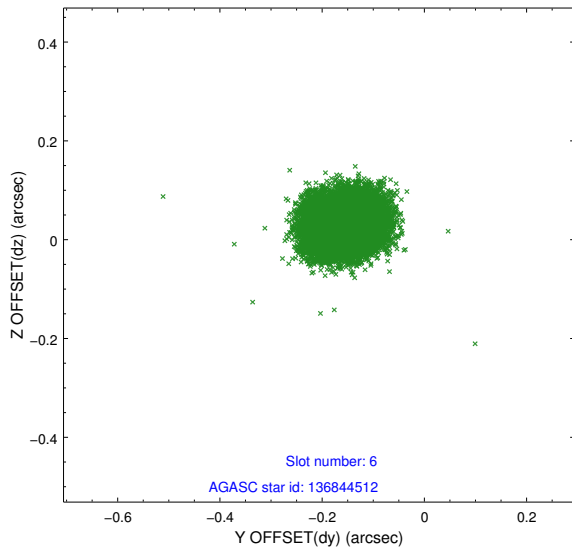
2.4.2 Slot 4



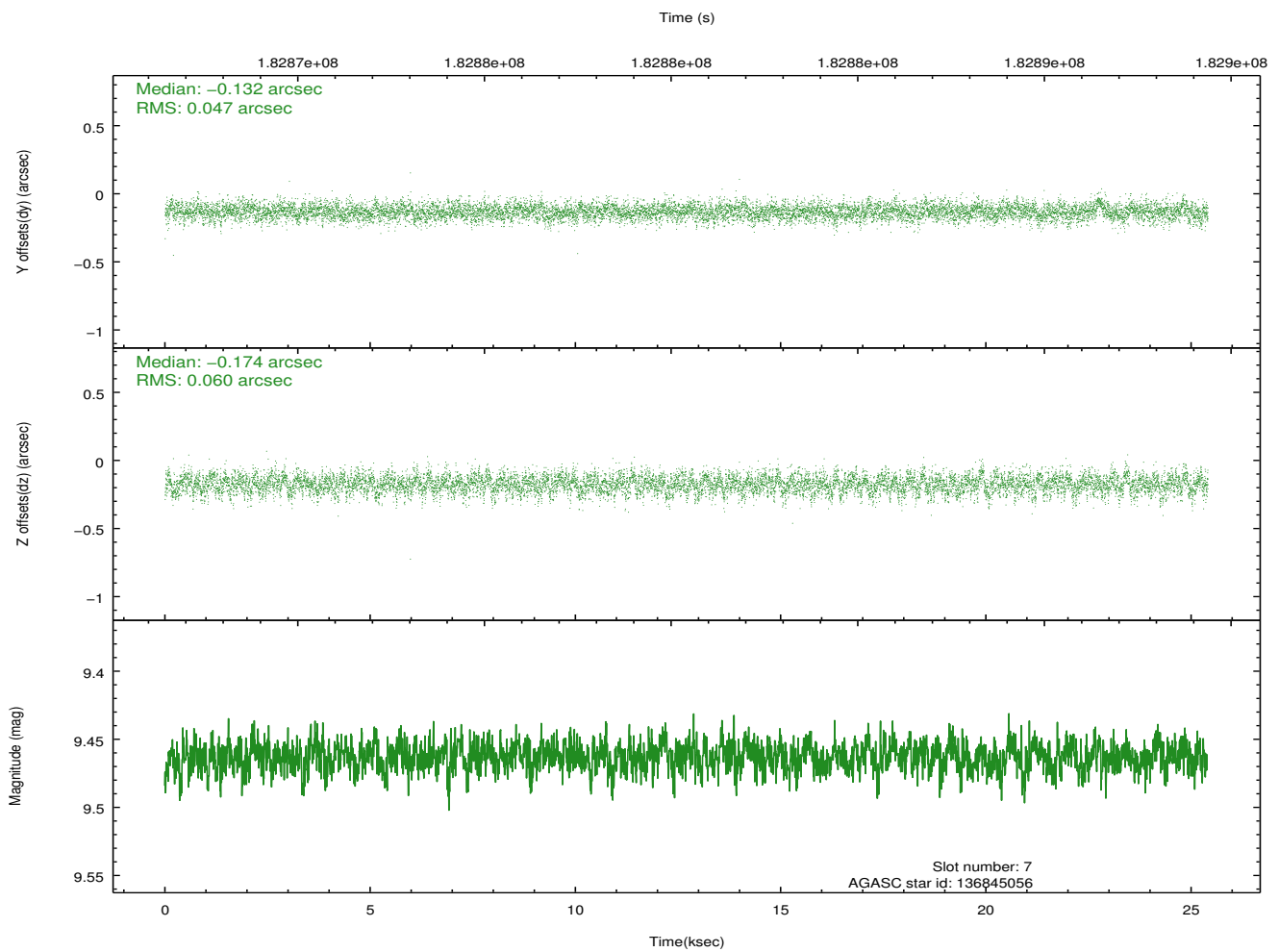
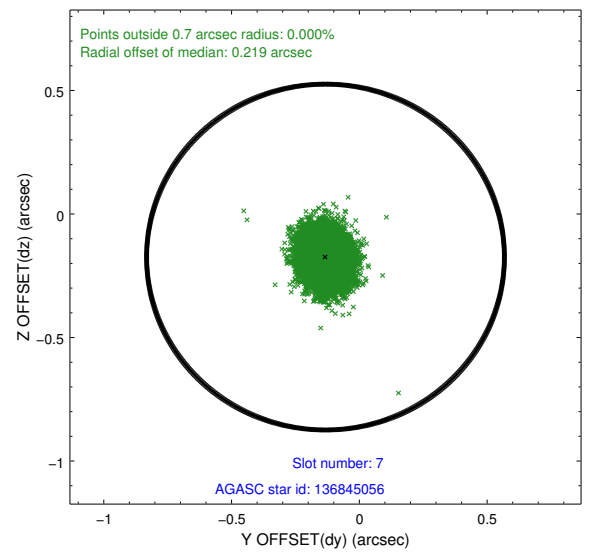
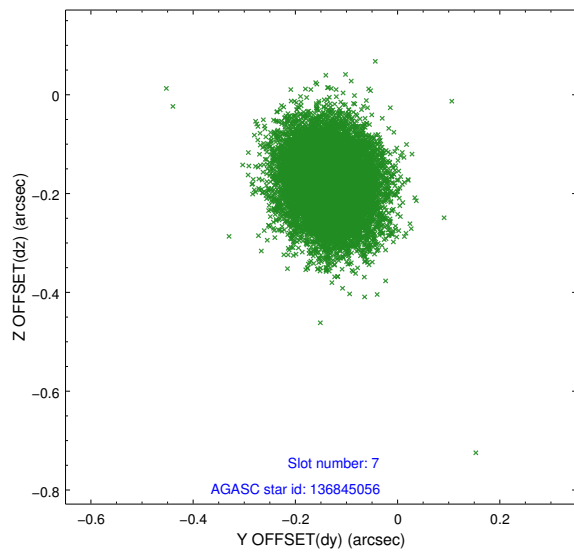
2.4.3 Slot 5



2.4.4 Slot 6

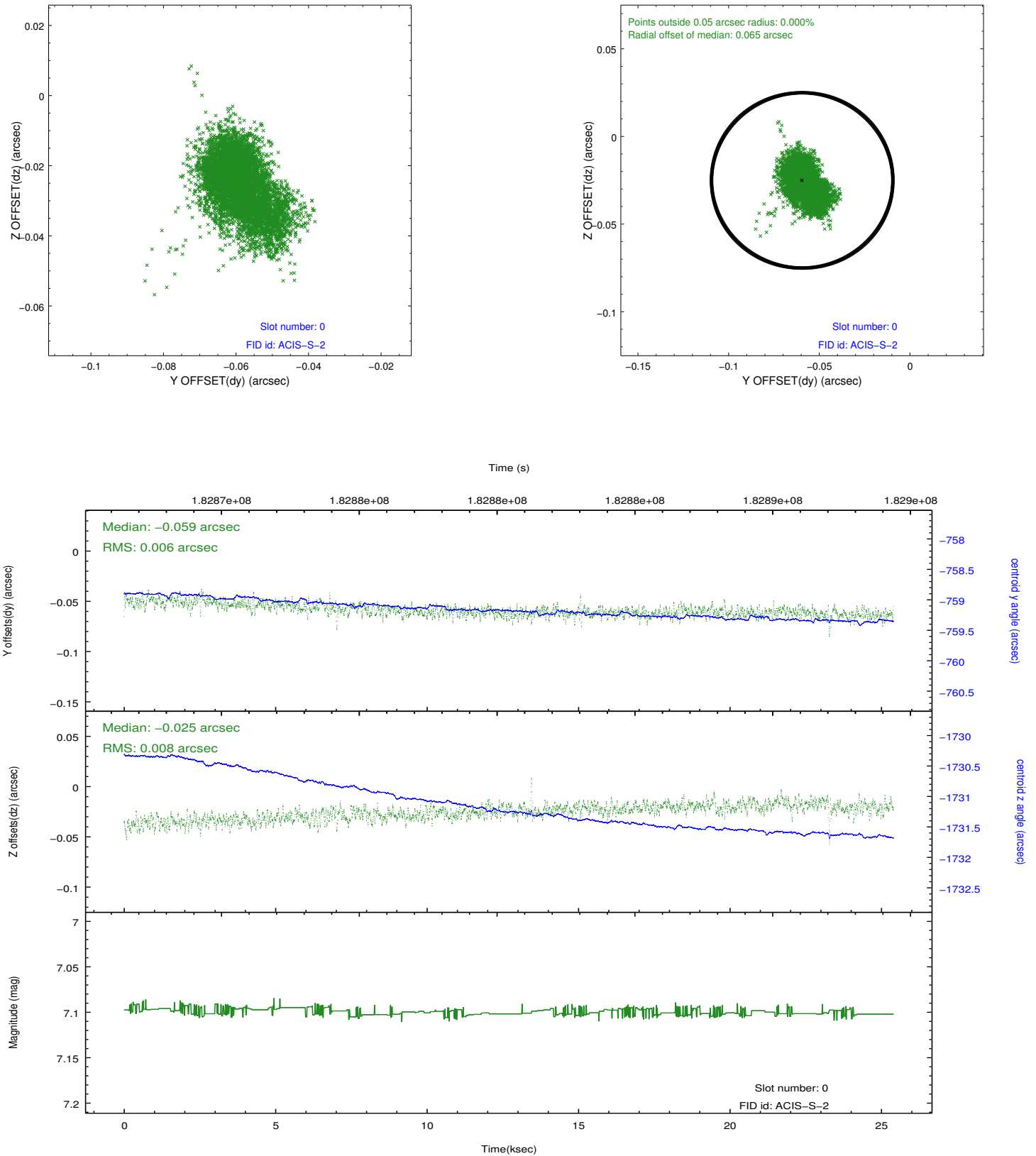


2.4.5 Slot 7

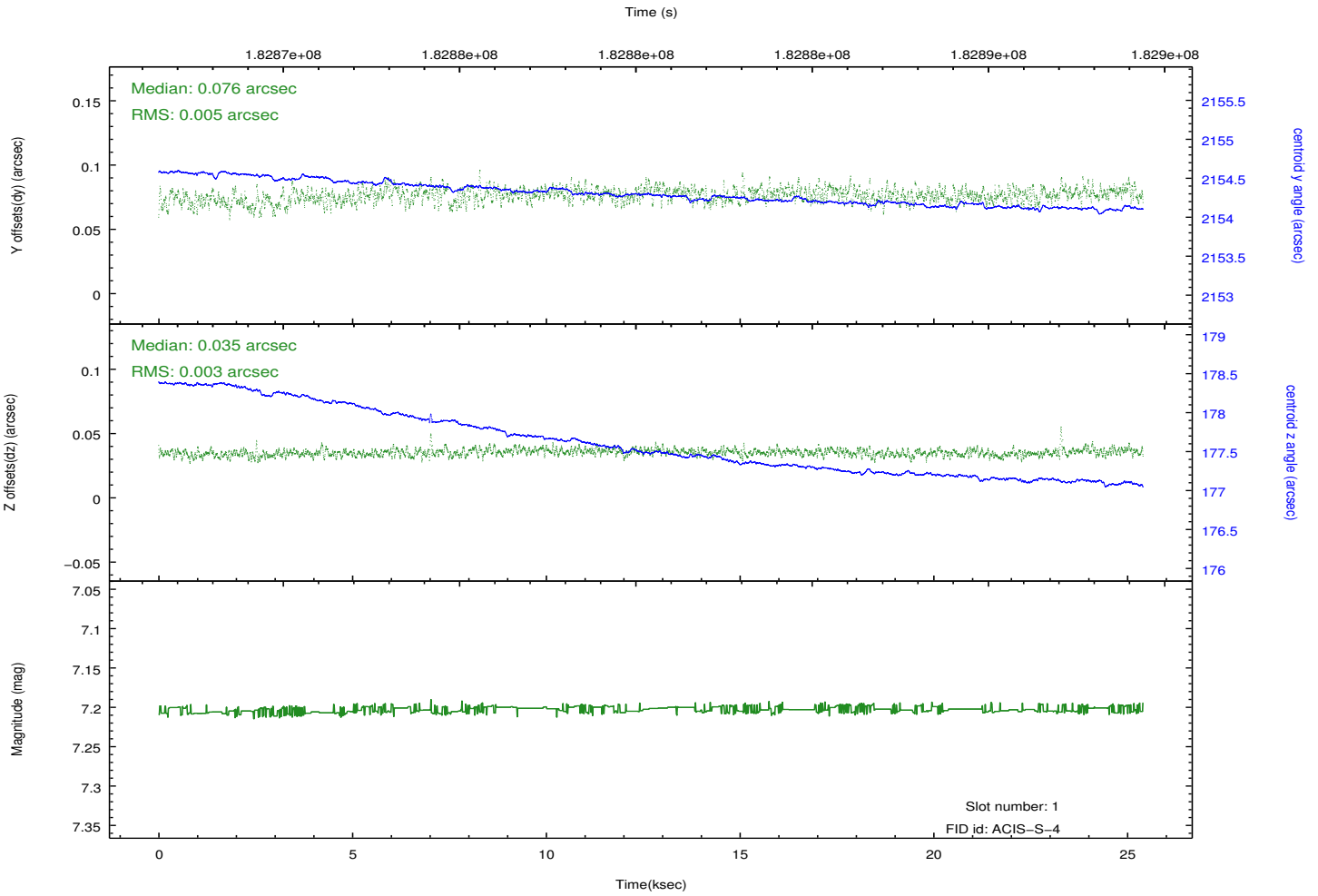
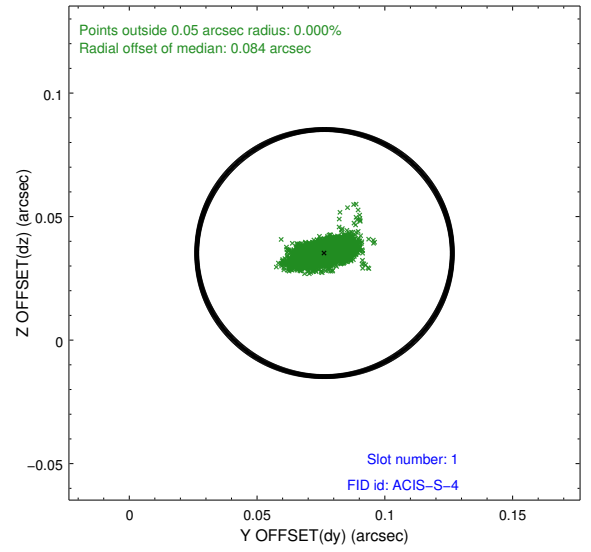
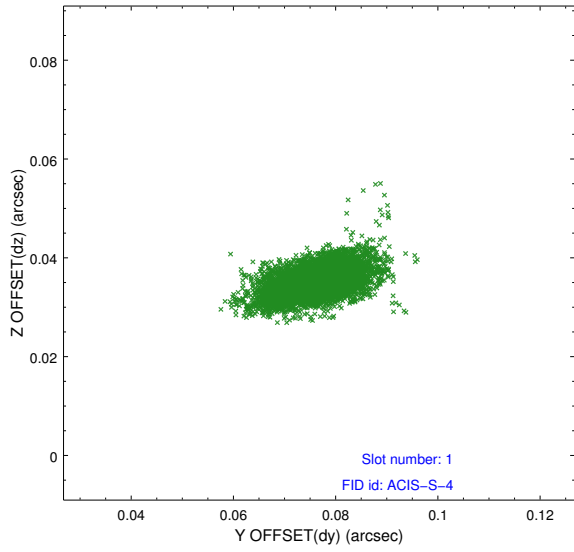


2.5 FID Slots

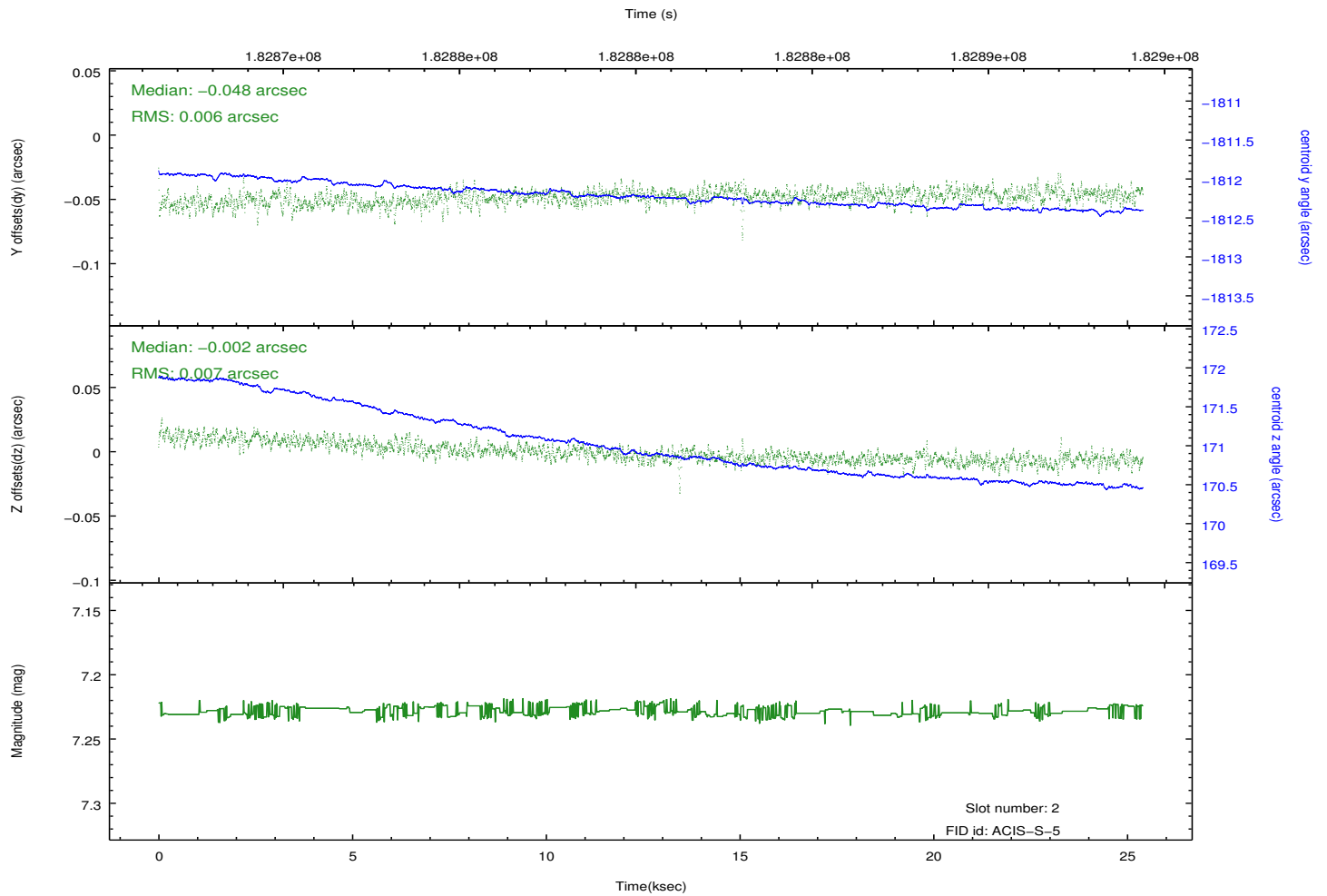
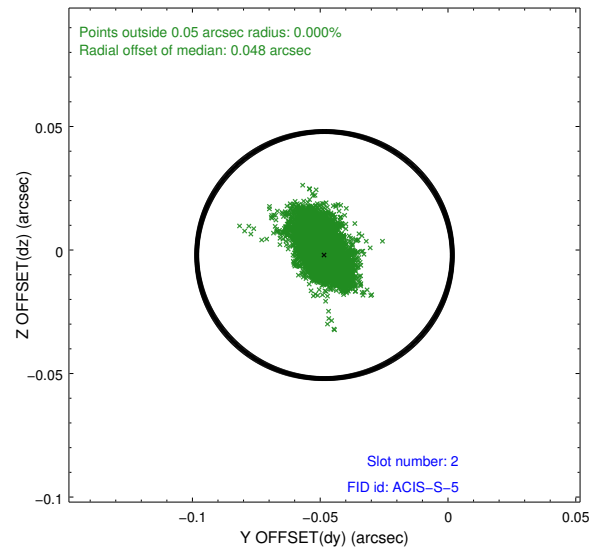
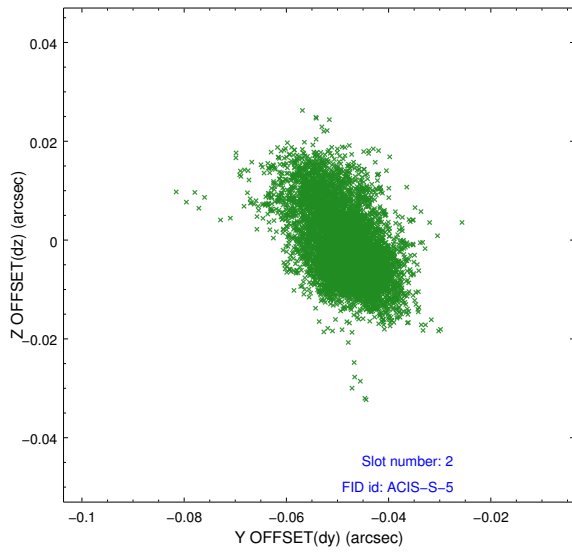
2.5.1 Slot 0



2.5.2 Slot 1



2.5.3 Slot 2



A Summary

A.1 Status

V&V Scientist	Joy Nichols
V&V Date (YYYY-MM-DD)	2012.11.07
V&V Edition	1
V&V Disposition and Status	OK
V&V Charge Time	25.402

A.2 Comments