

V&V Reference Report

L2 ASCDS Version : 8.4.5

Observation 3924 - L2 Version 5
Chandra X-Ray Center

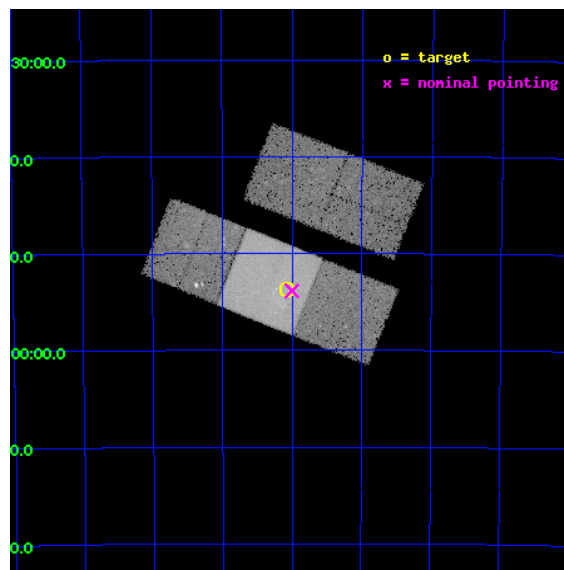
L2 Processing Date : Nov 2 2012

Contents

1	Front	2
2	OBI	3
2.1	OBI	3
2.1.1	Images	3
2.1.2	Bias	3
2.1.3	Parameters	4
2.1.4	Events	4
2.2	Compared Parameters	5
2.3	Aspect	6
2.4	Star Slots	9
2.4.1	Slot 3	9
2.4.2	Slot 4	10
2.4.3	Slot 5	11
2.4.4	Slot 6	12
2.4.5	Slot 7	13
2.5	FID Slots	14
2.5.1	Slot 0	14
2.5.2	Slot 1	15
2.5.3	Slot 2	16
A	Summary	17
A.1	Status	17
A.2	Comments	17

1 Front

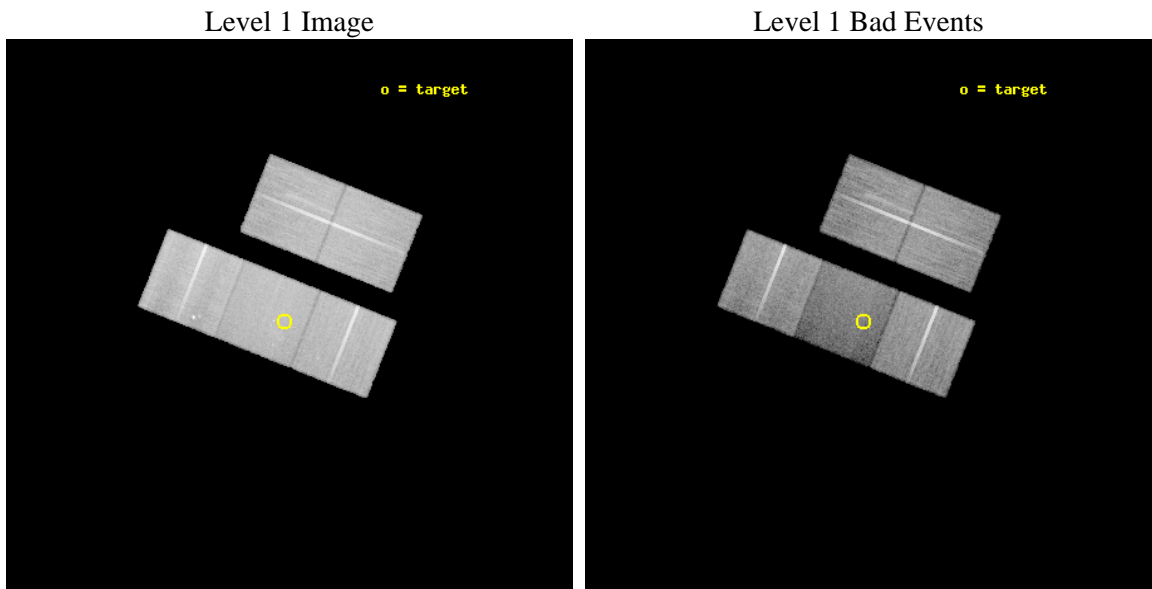
seq_num	500403	Sequence number
obs_id	3924	Observation id
title	MAKING THE MOST OF REMNANTS WITH CENTRAL OBJECT CANDIDATES	Proposa
observer	Dr. Eric Gotthelf	Principal investigator
object	G293.8+0.6	Source name
dtycycle	0	
cycle	P	events from which exps? Prim/Second/Both
ra_targ	173.77	Observer's specified target RA [deg]
dec_targ	-60.895831	Observer's specified target Dec [deg]
ra_nom	173.75052851514	Nominal RA [deg]
dec_nom	-60.897788042043	Nominal Dec [deg]
roll_nom	201.74550357368	Nominal Roll [deg]
revision	5	Processing version of data
ontime	36591.652762651	Sum of GTIs [s]
livetime	36113.555880925	Livetime [s]
ontime2	36594.629552901	Sum of GTIs [s]
ontime3	36594.711632907	Sum of GTIs [s]
ontime6	36597.893643141	Sum of GTIs [s]
ontime7	36591.652762651	Sum of GTIs [s]
ontime8	36591.529572845	Sum of GTIs [s]
l2events	169494	Number of level 2 events



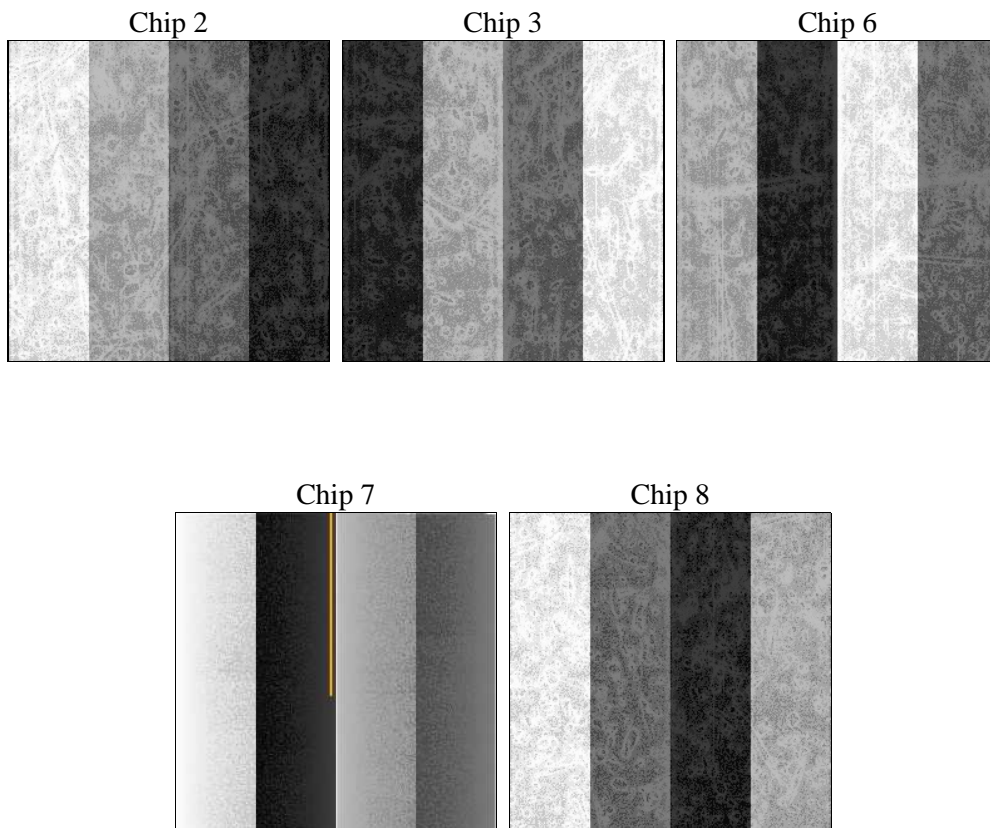
2 OBI

2.1 OBI

2.1.1 Images



2.1.2 Bias



2.1.3 Parameters

obi_num	0	Obi number	sched_exp_time	36500.000000	[s] Scheduled observation exposure time
ascdsver	8.4.5	Processing system revision	ontime	36591.652762651	Sum of GTIs [s]
caldbver	4.5.2	 	ontime2	36594.629552901	Sum of GTIs [s]
date	2012-11-02T17:13:12	Date and time of file creation	ontime3	36594.711632907	Sum of GTIs [s]
revision	5	Processing version of data	ontime6	36597.893643141	Sum of GTIs [s]
			ontime7	36591.652762651	Sum of GTIs [s]
			ontime8	36591.529572845	Sum of GTIs [s]
			l1events	986841	Number of level 1 events

2.1.4 Events

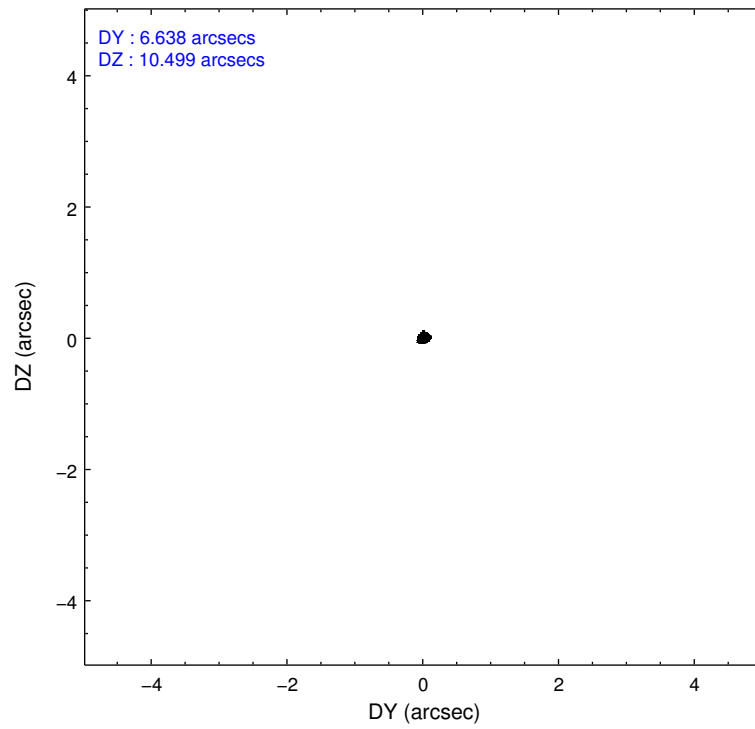
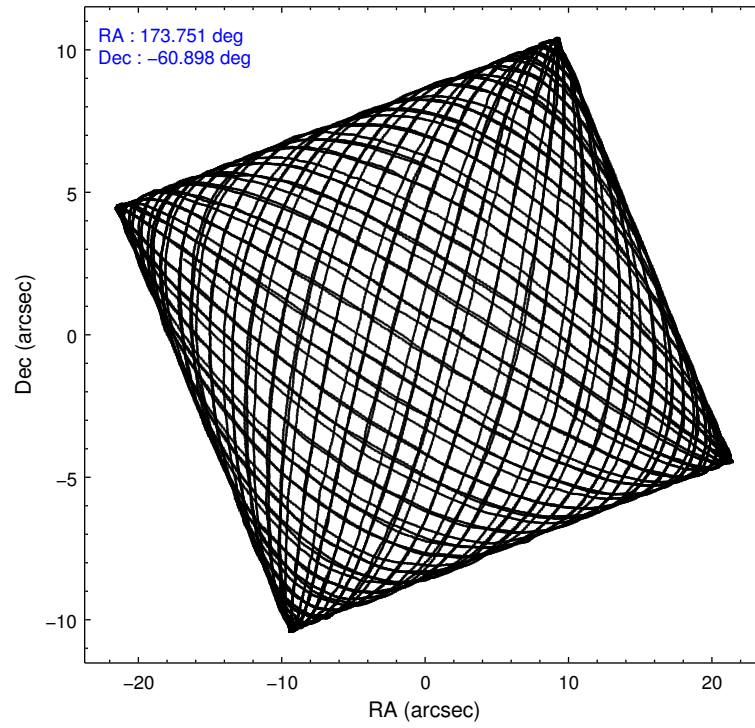
	ccd 2	ccd 3	ccd 6	ccd 7	ccd 8
level 1 events	193627	187049	190168	187458	228539
rejected events	174601	168894	167405	87751	174205
rejected %	90%	90%	88%	46%	76%

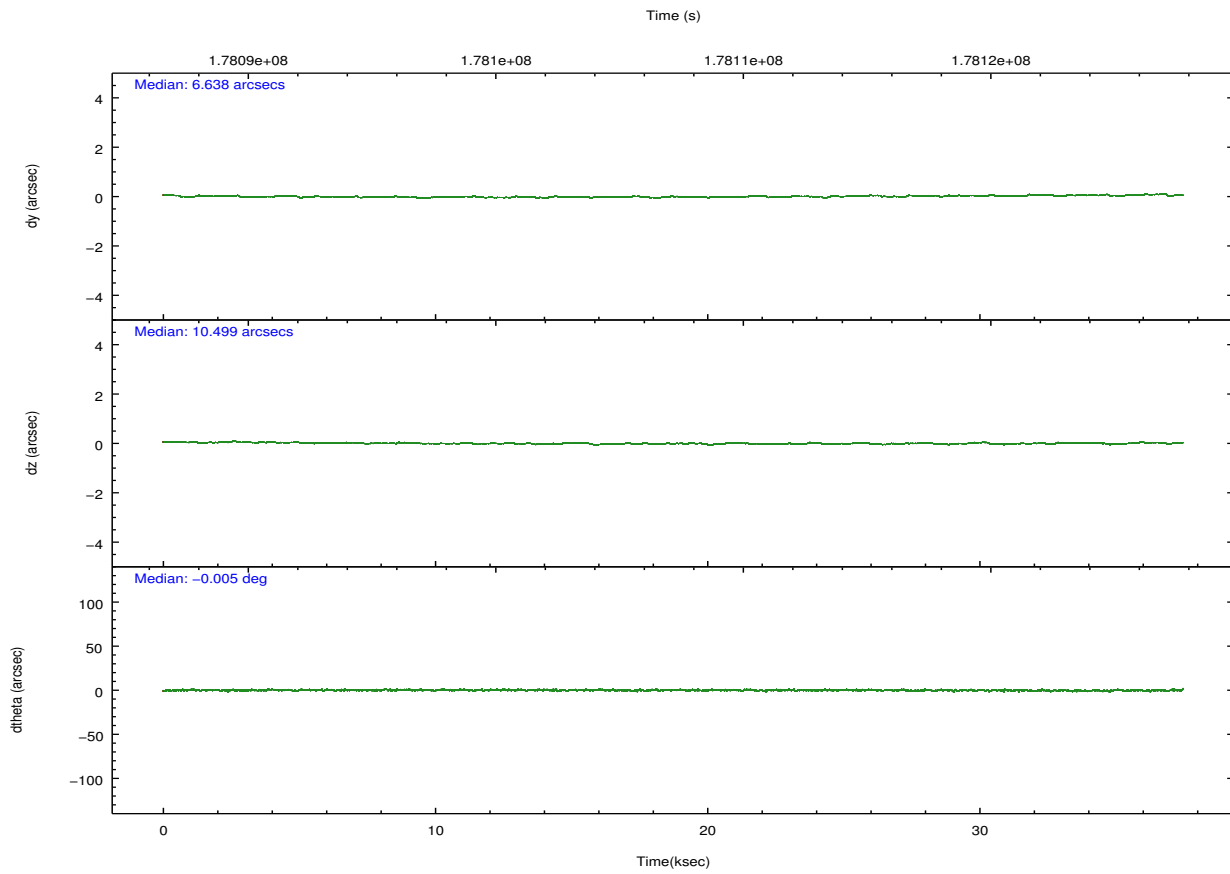
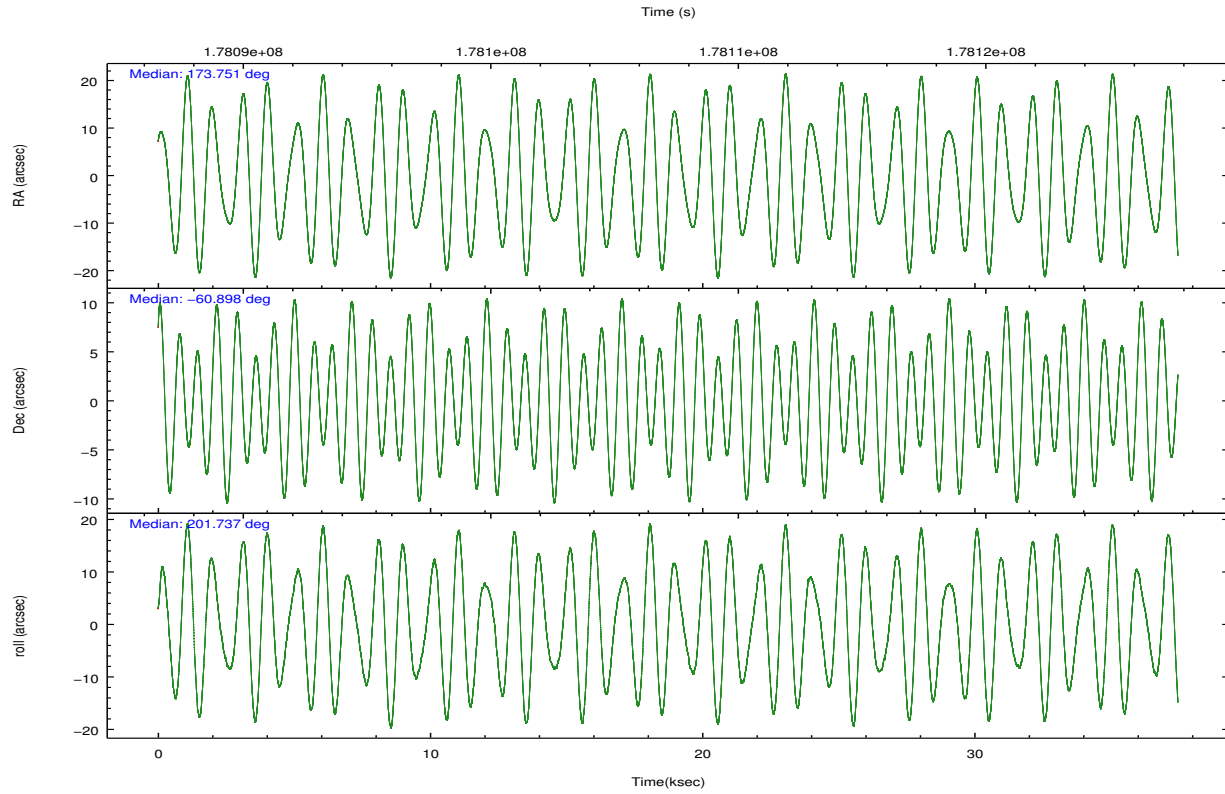
	ccd 2	ccd 3	ccd 6	ccd 7	ccd 8
grade 0 events	7712	7284	10380	12147	17304
	3%	3%	5%	6%	7%
grade 1 events	83	97	102	186	153
	0%	0%	0%	0%	0%
grade 2 events	4271	3638	4208	21391	11876
	2%	1%	2%	11%	5%
grade 3 events	2008	2125	2189	9864	5693
	1%	1%	1%	5%	2%
grade 4 events	2007	1905	2174	9873	5358
	1%	1%	1%	5%	2%
grade 5 events	4951	6019	6215	18745	8984
	2%	3%	3%	9%	3%
grade 6 events	3030	3203	3813	46438	14106
	1%	1%	2%	24%	6%
grade 7 events	169565	162778	161087	68814	165065
	87%	87%	84%	36%	72%

2.2 Compared Parameters

Parameter	Planned	Actual	Parameter	Planned	Actual
Instrument	ACIS	ACIS	Obspar format version number	7	7
Detector	ACIS-23678	ACIS-23678	Obspar file type	PREDICTED	ACTUAL
Grating	NONE	NONE	Obspar update status	NONE	UPDATED
Data mode	VFAINT	VFAINT	Number of optional ACIS chips dropped	0	0
Observation mode	POINTING	POINTING	On-chip summing requested	N	N
[deg] Pointing RA	173.784572	173.7505285151437	Subarray requested	NONE	NONE
[deg] Pointing Dec	-60.876168	-60.89778804204266	Alternating exposures requested	N	N
[deg] Pointing Roll	201.618620	201.7455035736785	[s] Primary exposure time	0.000000	3.1
[mm] SIM focus pos	-0.684267	-0.6828225247311905			
[mm] SIM defocus	0	0.001444936568705701			
[mm] SIM translation stage pos	-190.132523	-190.1425803651734			
[mm] SIM translation stage offset	0	0.01005778216563158			
[s] Observation start time (MET)	178089390.184000	178088036.13917			
Observation start date	2003-08-24T05:15:26	2003-08-24T04:53:56			
[s] Observation end time (MET)	178125890.184000	178126479.79082			
Observation end date	2003-08-24T15:23:46	2003-08-24T15:34:39			
Read mode	TIMED	TIMED			

2.3 Aspect



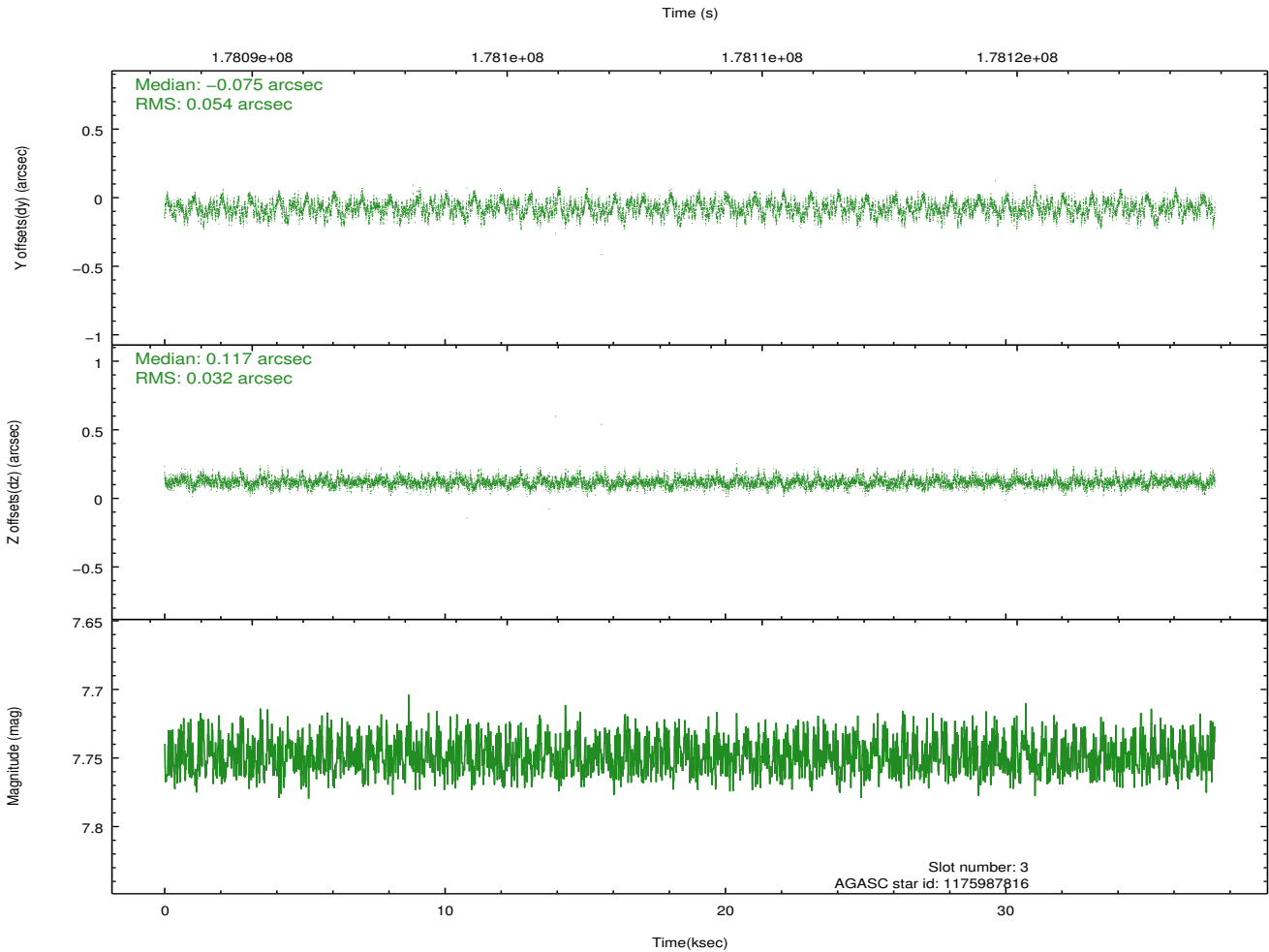
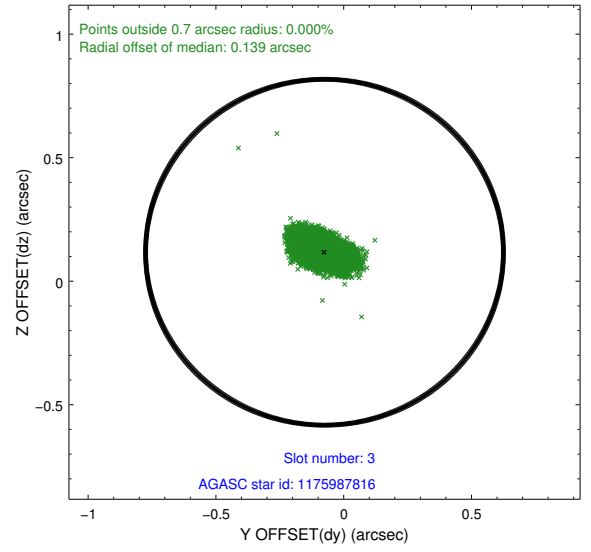
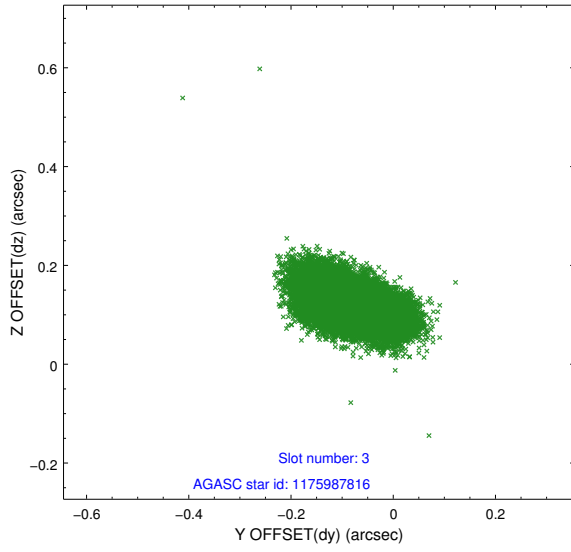


Slot Statistics

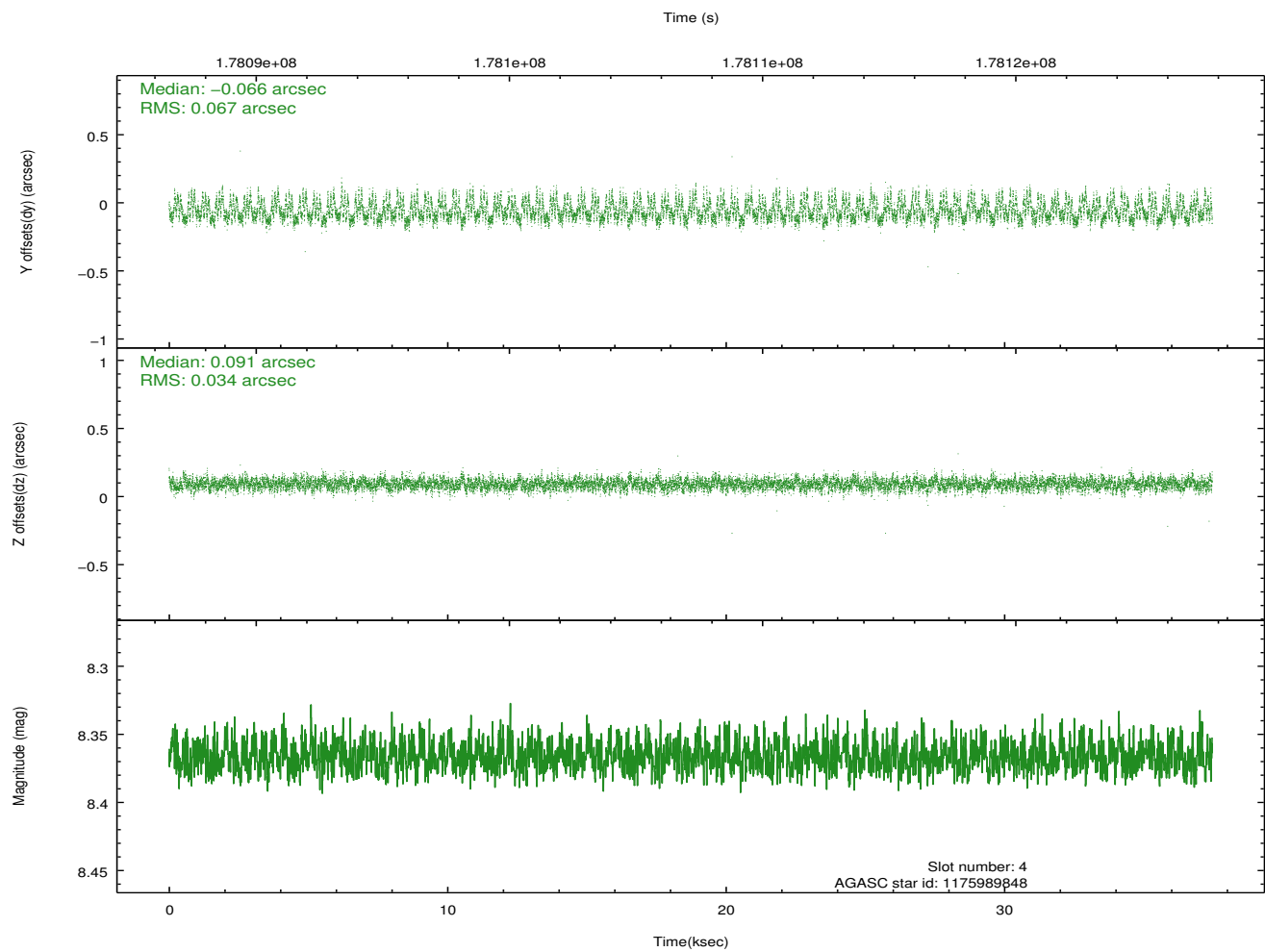
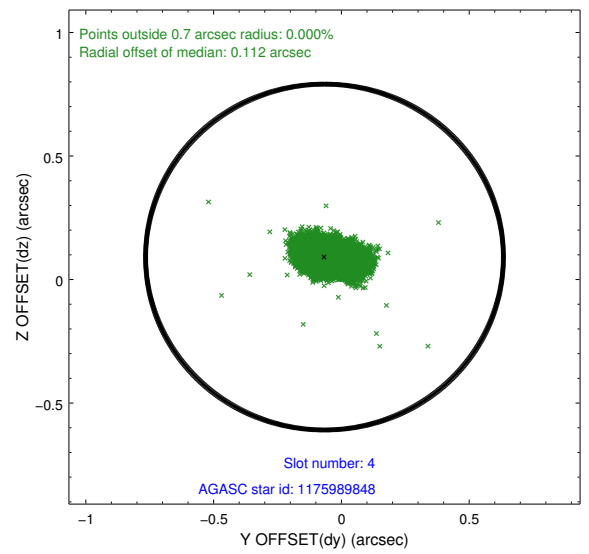
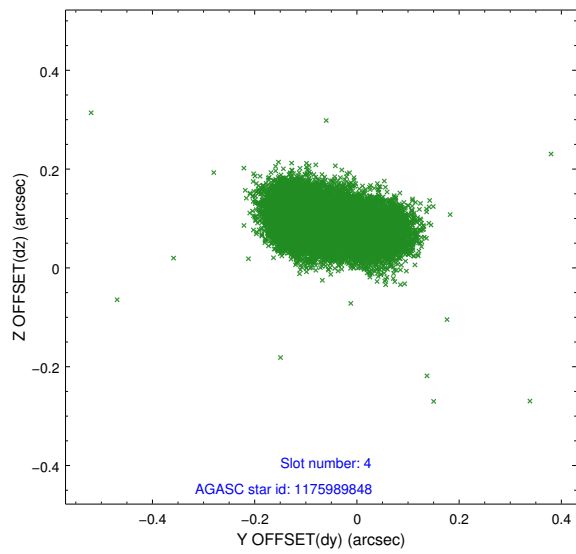
slot	status	id	mag	n_pts	med_dy	med_dz	dr1	dr2	ra	dec	mean_y	mean_z
0	FID	ACIS-S-2	7.10	9134	-0.031	-0.019	0.007	0.011	0.000000	0.000000	-759.39	-1731.74
1	FID	ACIS-S-5	7.23	9134	-0.014	-0.012	0.007	0.011	0.000000	0.000000	-1812.53	170.20
2	FID	ACIS-S-6	7.34	9135	0.019	0.039	0.006	0.011	0.000000	0.000000	402.21	814.22
3	GUIDE	1175987816	7.75	18269	-0.075	0.117	0.065	0.112	175.028658	-61.185744	-1588.74	1850.54
4	GUIDE	1175989848	8.37	18267	-0.066	0.091	0.078	0.135	174.871596	-61.162609	-1369.37	1668.82
5	GUIDE	1175992576	8.52	18265	0.159	-0.122	0.066	0.110	172.218957	-60.664058	2298.19	-1696.06
6	GUIDE	1175983312	8.97	18263	0.124	-0.130	0.074	0.119	172.564937	-60.527142	1553.39	-1945.12
7	GUIDE	1175981336	7.28	18263	-0.149	0.044	0.059	0.096	175.260323	-60.923305	-2326.70	1135.73

2.4 Star Slots

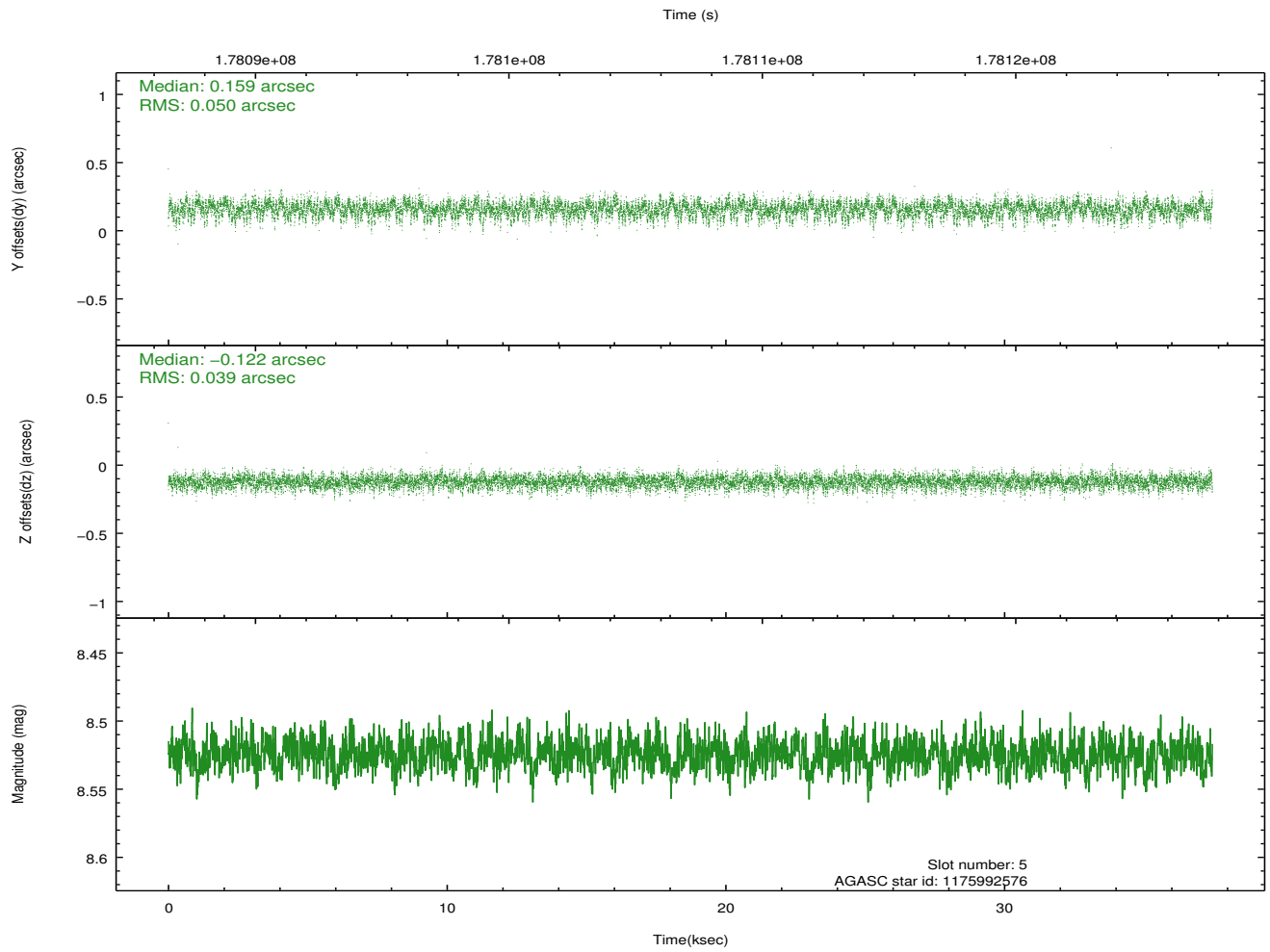
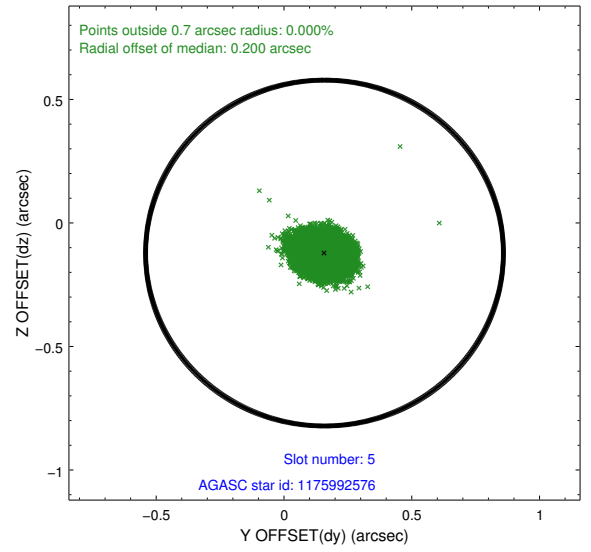
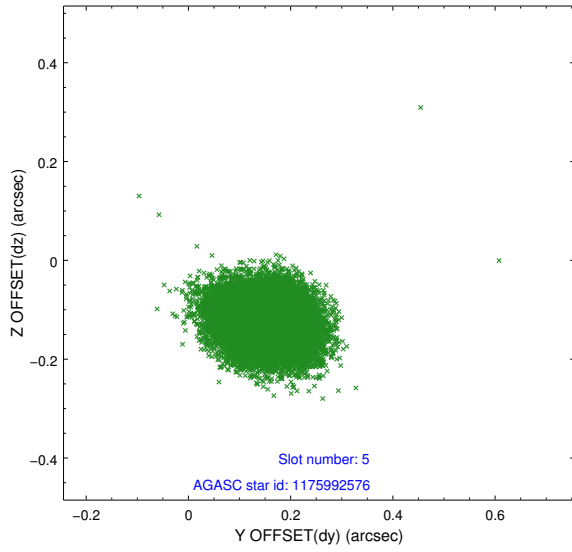
2.4.1 Slot 3



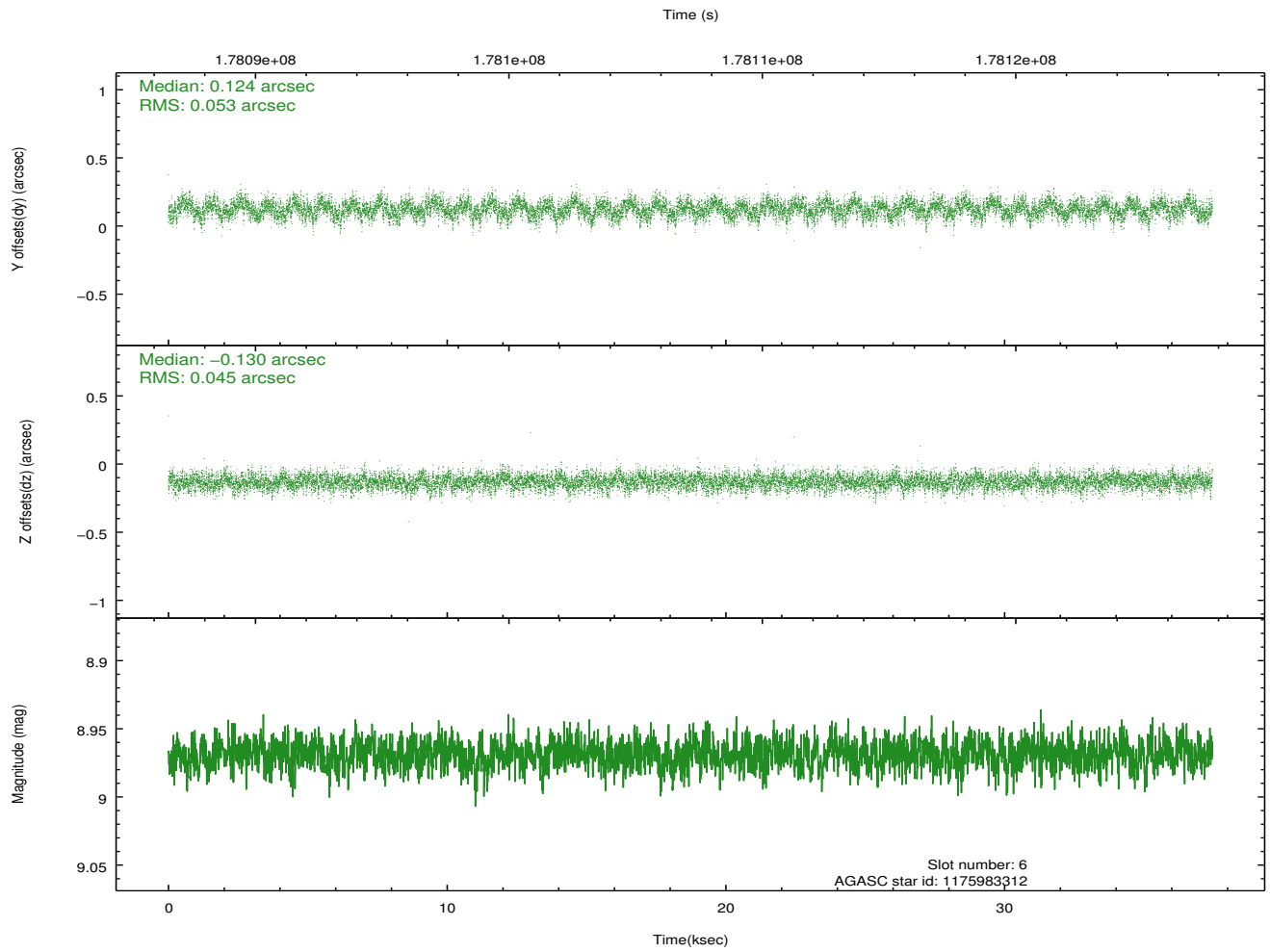
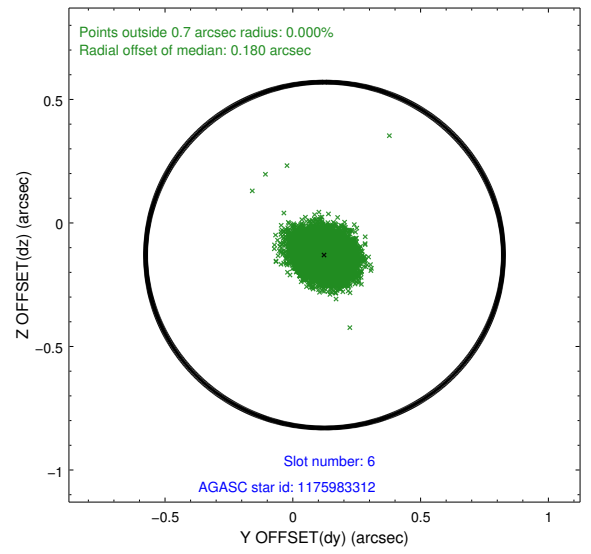
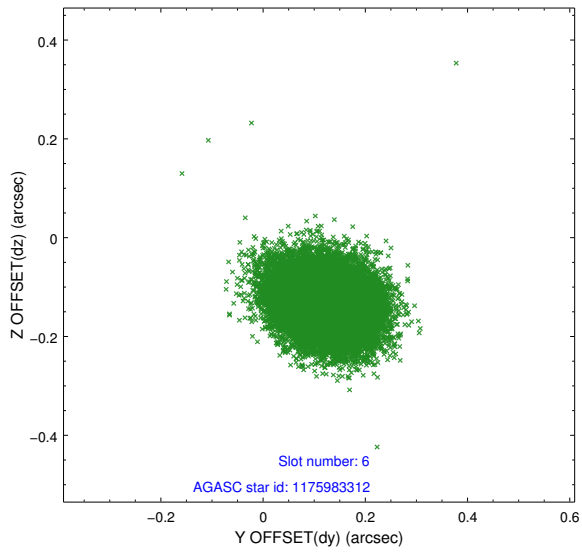
2.4.2 Slot 4



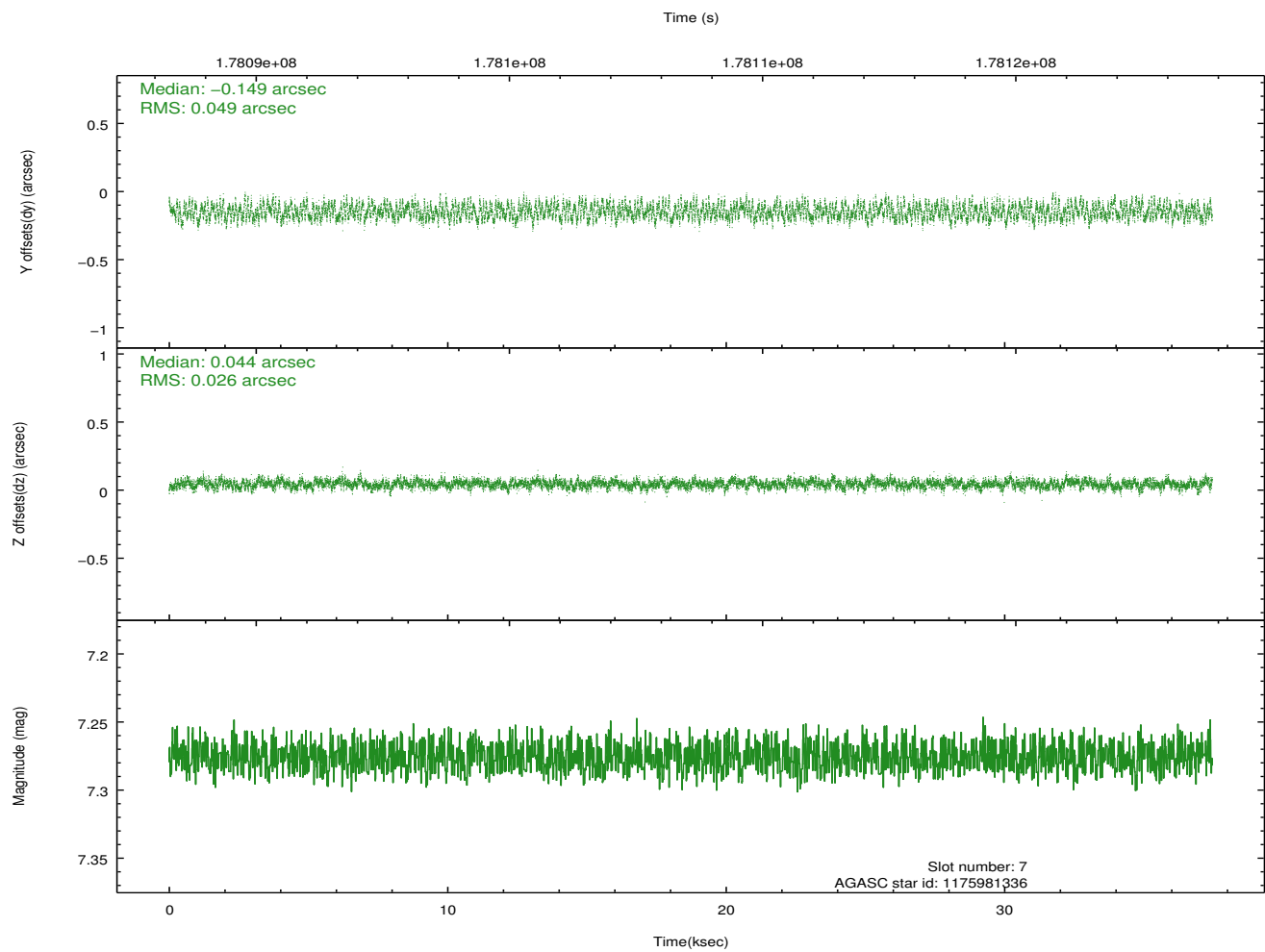
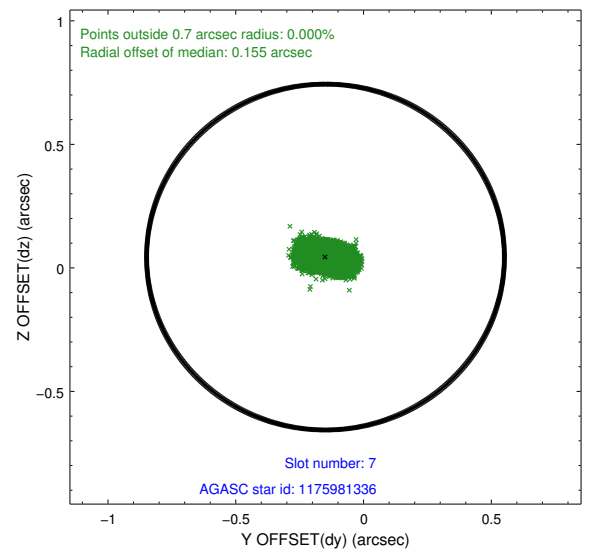
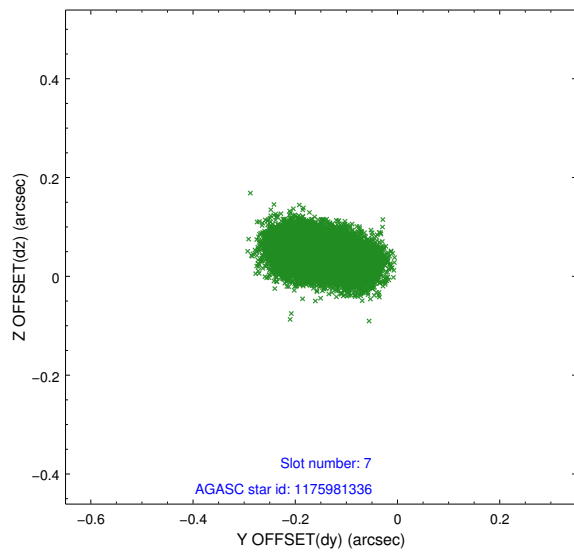
2.4.3 Slot 5



2.4.4 Slot 6

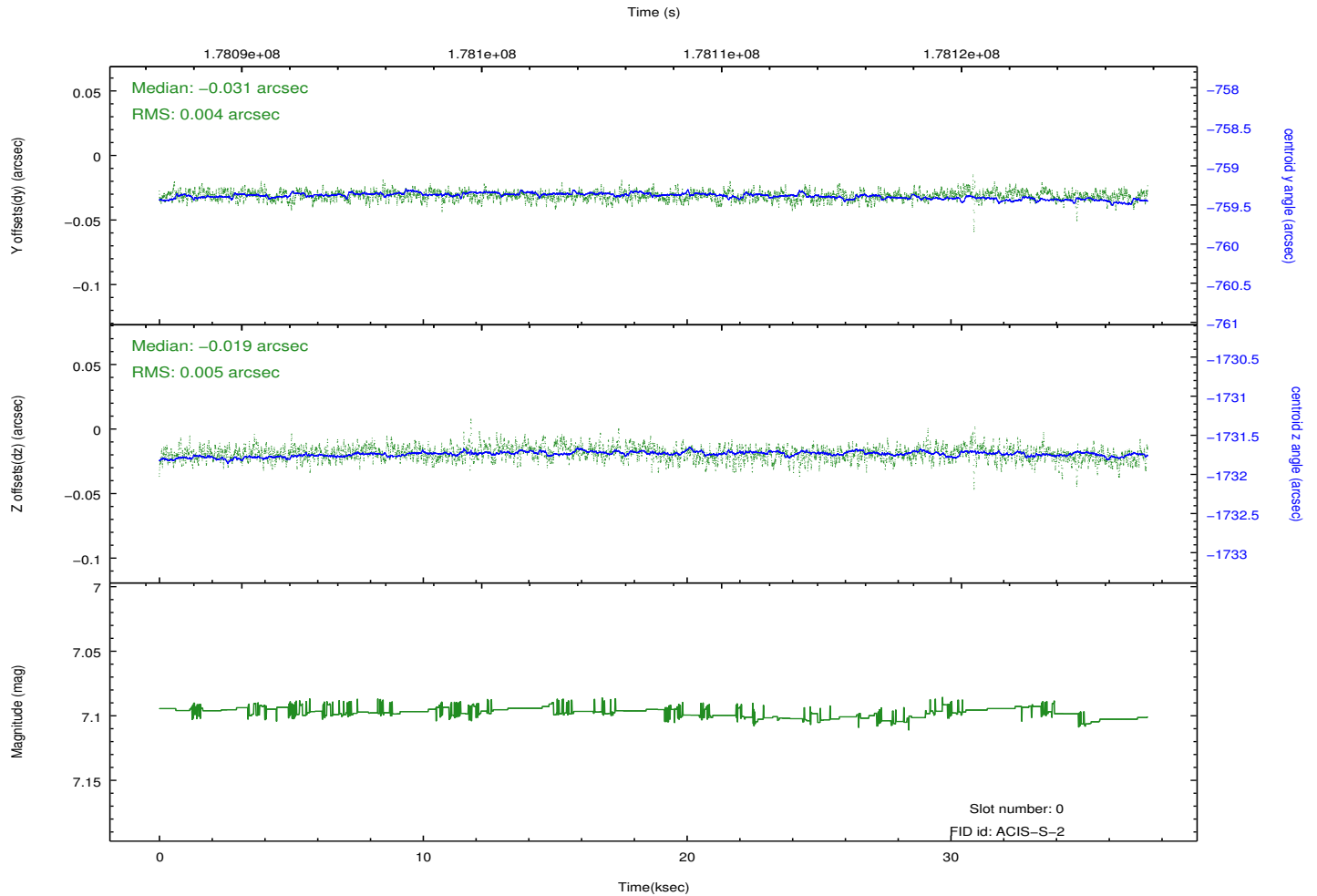
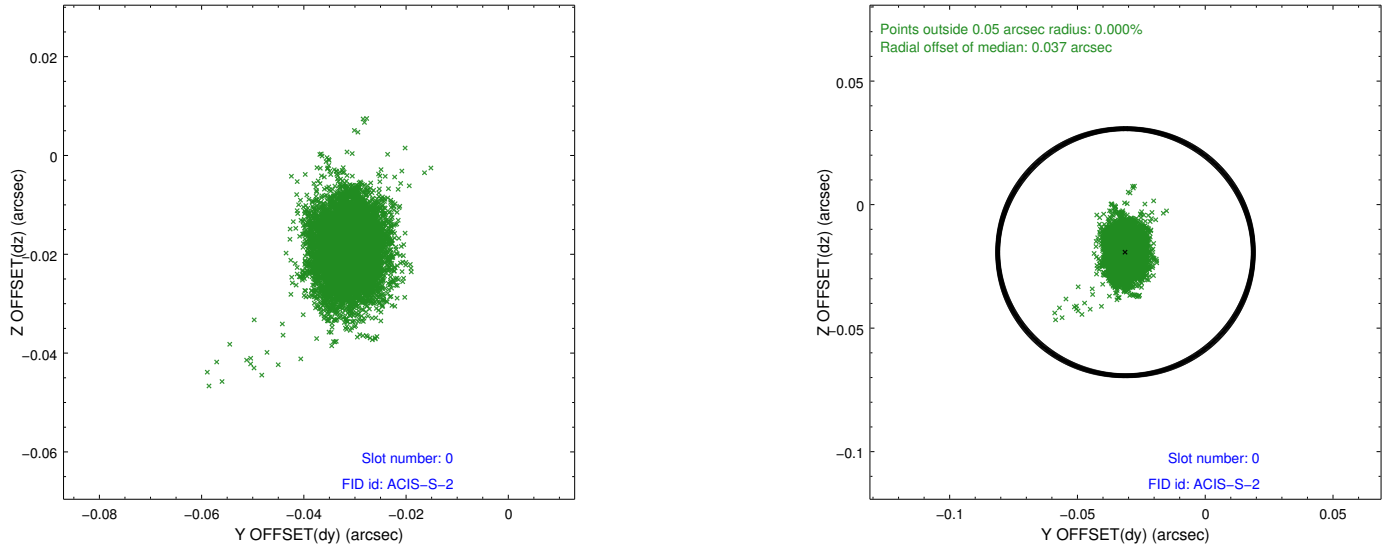


2.4.5 Slot 7

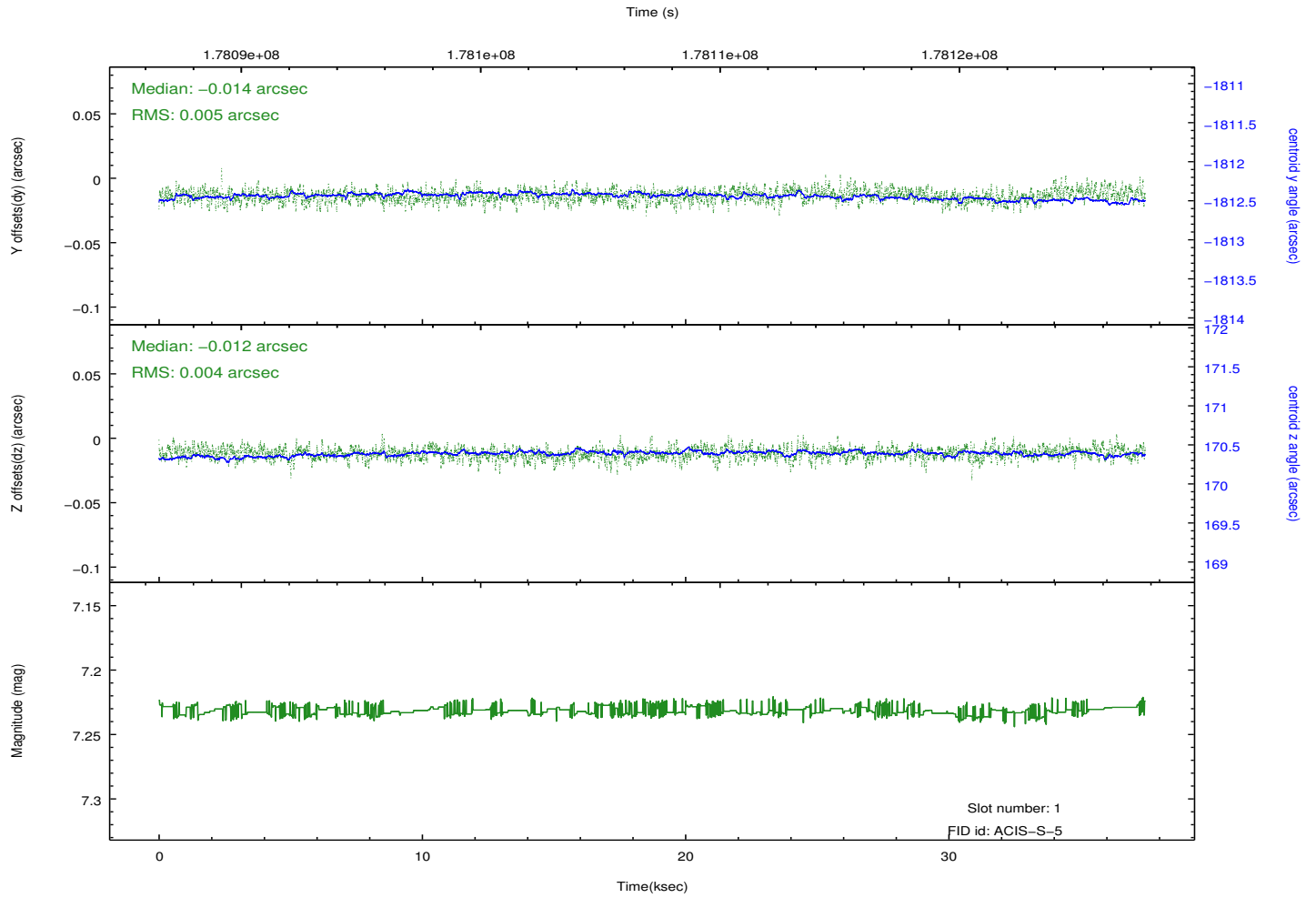
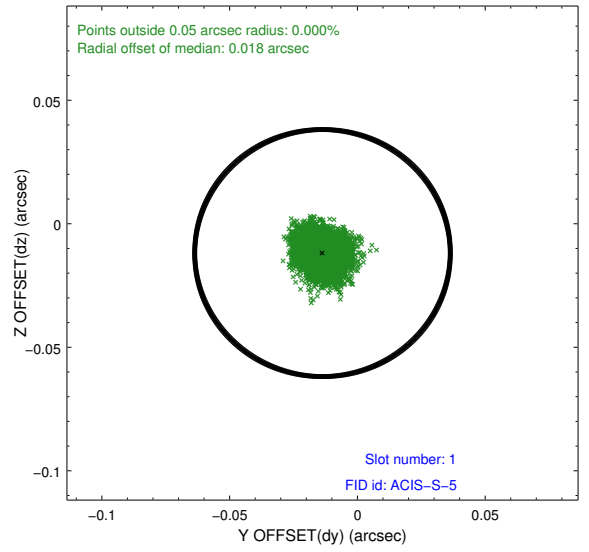
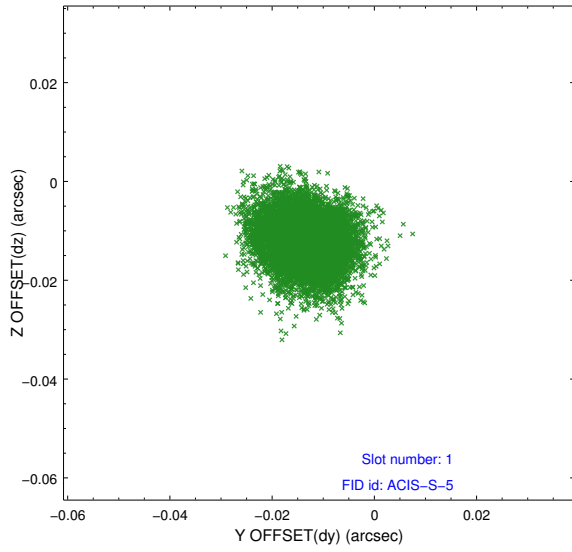


2.5 FID Slots

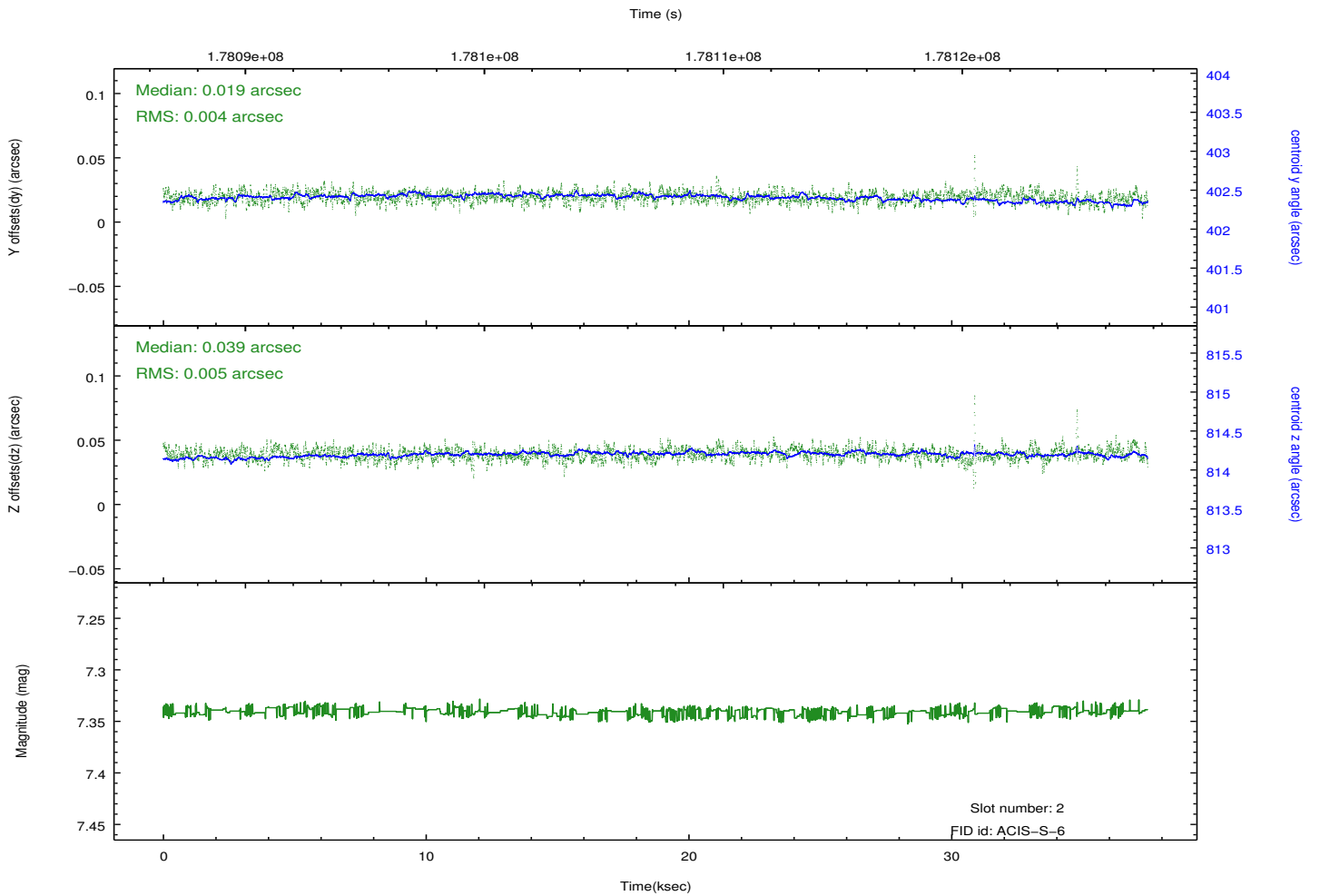
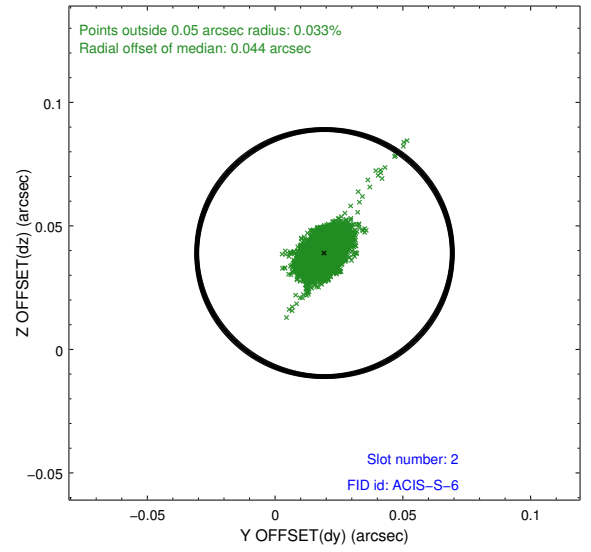
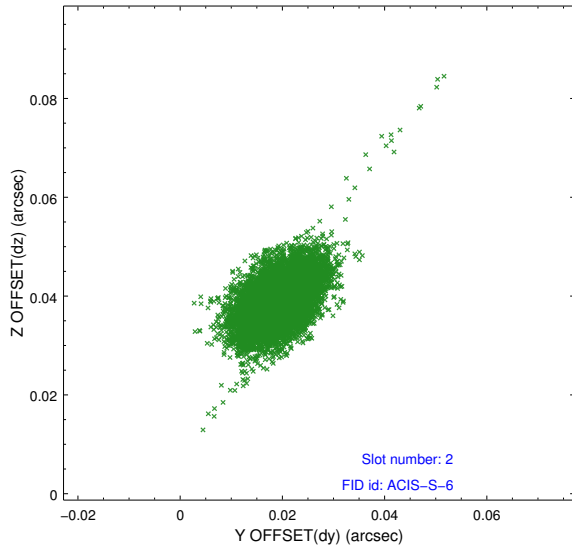
2.5.1 Slot 0



2.5.2 Slot 1



2.5.3 Slot 2



A Summary

A.1 Status

V&V Scientist	Jen Lauer
V&V Date (YYYY-MM-DD)	2012.11.28
V&V Edition	1
V&V Disposition and Status	OK
V&V Charge Time	36.592

A.2 Comments