

V&V Reference Report

L2 ASCDS Version : 8.4.5

Observation 4004 - L2 Version 3
Chandra X-Ray Center

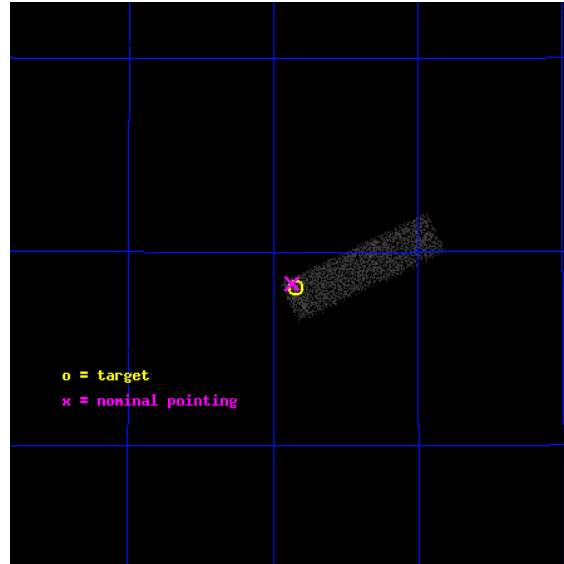
L2 Processing Date : Oct 24 2012

Contents

1	Front	2
2	OBI	3
2.1	OBI	3
2.1.1	Images	3
2.1.2	Bias	3
2.1.3	Parameters	4
2.1.4	Events	4
2.2	Compared Parameters	5
2.3	Aspect	6
2.4	Star Slots	9
2.4.1	Slot 3	9
2.4.2	Slot 4	10
2.4.3	Slot 5	11
2.4.4	Slot 6	12
2.4.5	Slot 7	13
2.5	FID Slots	14
2.5.1	Slot 0	14
2.5.2	Slot 1	15
2.5.3	Slot 2	16
A	Summary	17
A.1	Status	17
A.2	Comments	17

1 Front

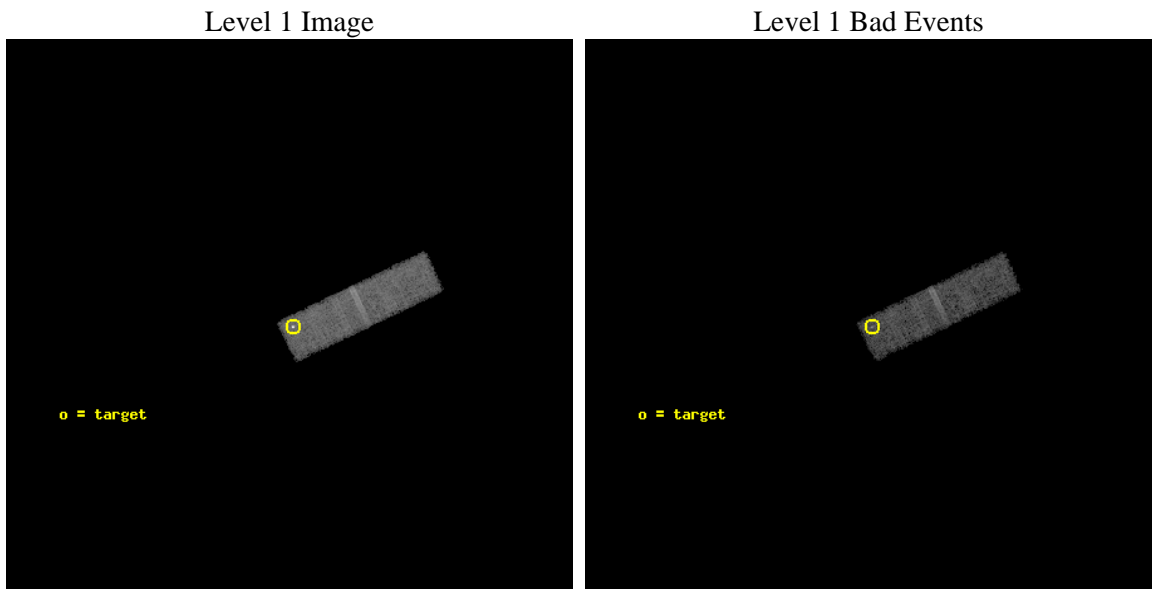
seq_num	700683	Sequence number
obs_id	4004	Observation id
title	THE NATURE OF THE ``COMPOSITE" SEYFERT/STAR-FORMING GALAXIES	Pr
observer	Dr Anna Wolter	Principal investigator
object	IRAS20069+5929	Source name
dtcycle	0	
cycle	P	events from which exps? Prim/Second/Both
ra_targ	301.96125	Observer's specified target RA [deg]
dec_targ	59.636389	Observer's specified target Dec [deg]
ra_nom	301.96812725427	Nominal RA [deg]
dec_nom	59.639461015358	Nominal Dec [deg]
roll_nom	64.589312818368	Nominal Roll [deg]
revision	3	Processing version of data
ontime	25184.759365201	Sum of GTIs [s]
livetime	23955.825516219	Livetime [s]
ontime3	25184.759365201	Sum of GTIs [s]
l2events	9274	Number of level 2 events



2 OBI

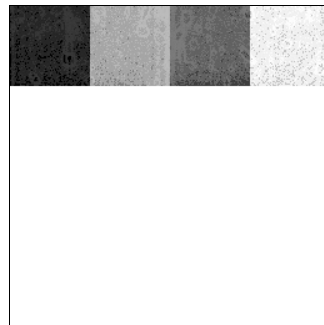
2.1 OBI

2.1.1 Images



2.1.2 Bias

Chip 3



2.1.3 Parameters

obi_num	0	Obi number	sched_exp_time	25000.000000	[s] Scheduled observation exposure time
ascdsver	8.4.5	Processing system revision	ontime	25184.759365201	Sum of GTIs [s]
caldbver	4.5.2	 	ontime3	25184.759365201	Sum of GTIs [s]
date	2012-10-24T21:20:41	Date and time of file creation	l1events	61363	Number of level 1 events
revision	3	Processing version of data			

2.1.4 Events

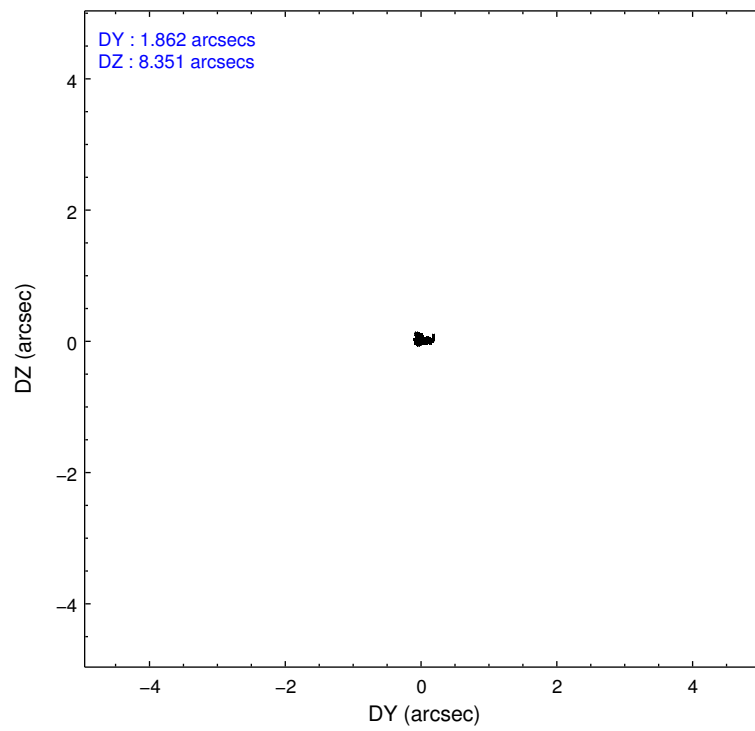
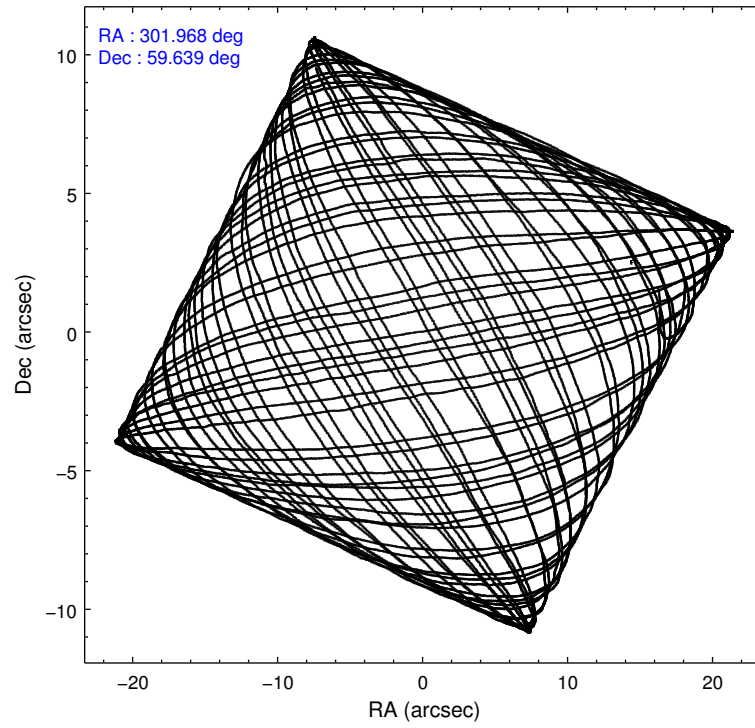
	ccd 3
level 1 events	61363
rejected events	51131
rejected %	83%

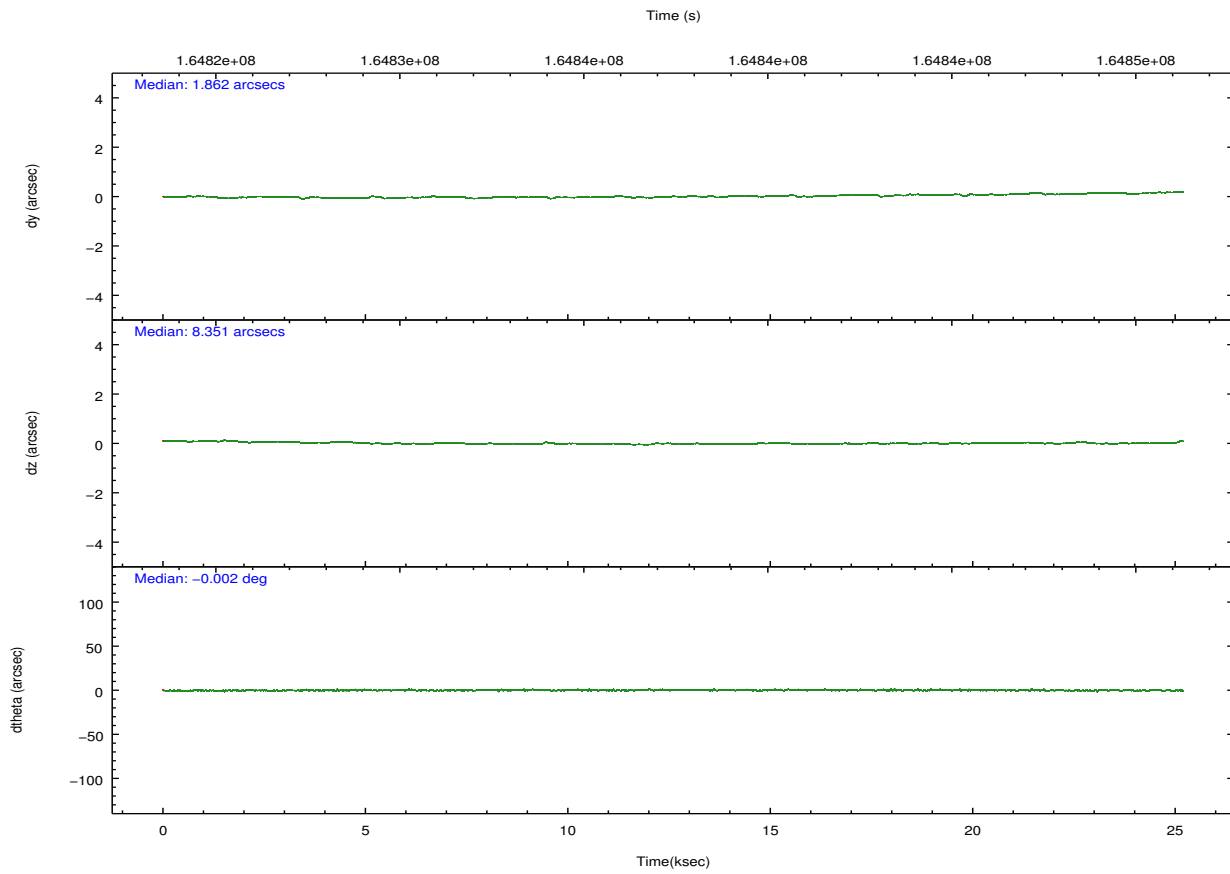
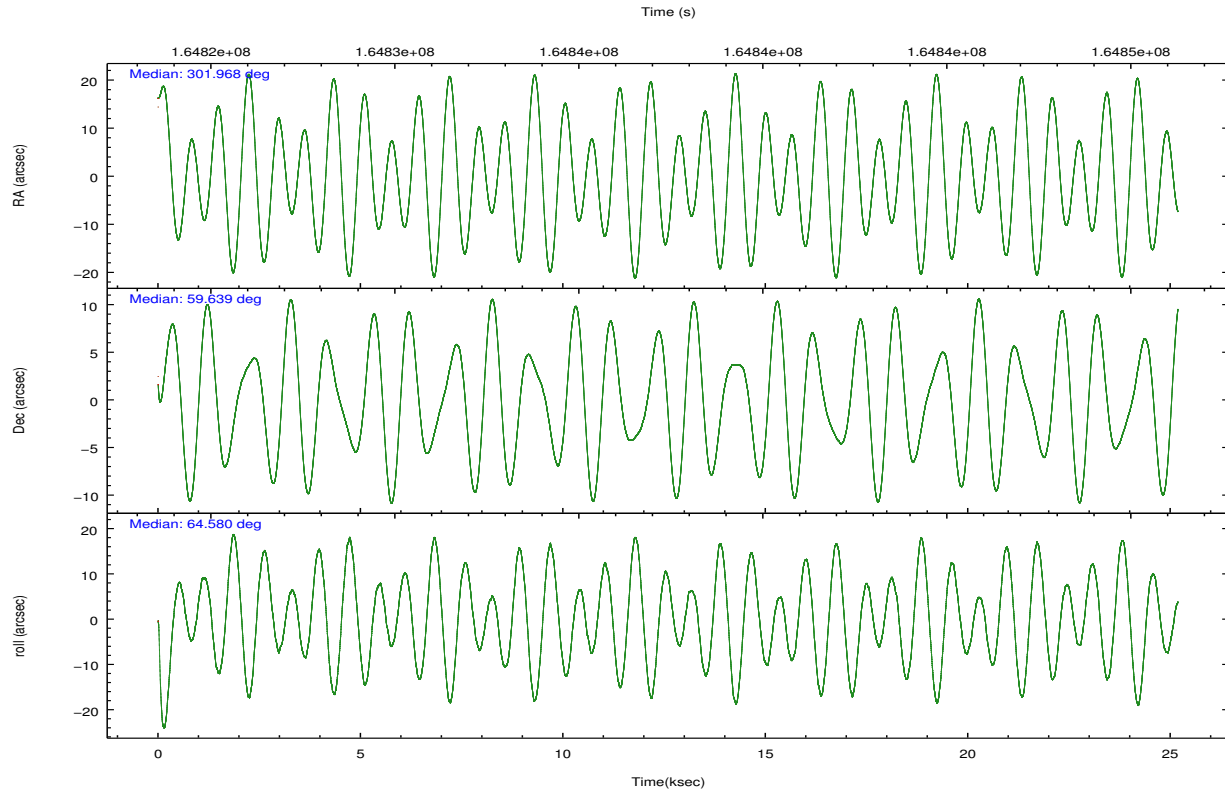
	ccd 3
grade 0 events	5810
	9%
grade 1 events	77
	0%
grade 2 events	1366
	2%
grade 3 events	1131
	1%
grade 4 events	1097
	1%
grade 5 events	2102
	3%
grade 6 events	1088
	1%
grade 7 events	48692
	79%

2.2 Compared Parameters

Parameter	Planned	Actual	Parameter	Planned	Actual
Instrument	ACIS	ACIS	Obspar format version number	7	7
Detector	ACIS-3	ACIS-3	Obspar file type	PREDICTED	ACTUAL
Grating	NONE	NONE	Obspar update status	NONE	UPDATED
Data mode	FAINT	FAINT	Number of optional ACIS chips dropped	0	0
Observation mode	POINTING	POINTING	On-chip summing requested	N	N
[deg] Pointing RA	301.972655	301.9681272542749	Subarray requested	CUSTOM	1/4
[deg] Pointing Dec	59.612188	59.63946101535785	Subarray start row	769	769
[deg] Pointing Roll	64.376712	64.58931281836828	Subarray row count	256	256
[mm] SIM focus pos	-0.782348	-0.7809083437167272	Alternating exposures requested	N	N
[mm] SIM defocus	0	0.001439871863259334	[s] Primary exposure time	0.000000	0.8
[mm] SIM translation stage pos	-233.592463	-233.5874344608287			
[mm] SIM translation stage offset	0	-0.005018542100998502			
[s] Observation start time (MET)	164825024.184000	164823735.56355			
Observation start date	2003-03-23T16:42:40	2003-03-23T16:22:15			
[s] Observation end time (MET)	164850024.184000	164850724.83969			
Observation end date	2003-03-23T23:39:20	2003-03-23T23:52:04			
Read mode	TIMED	TIMED			

2.3 Aspect



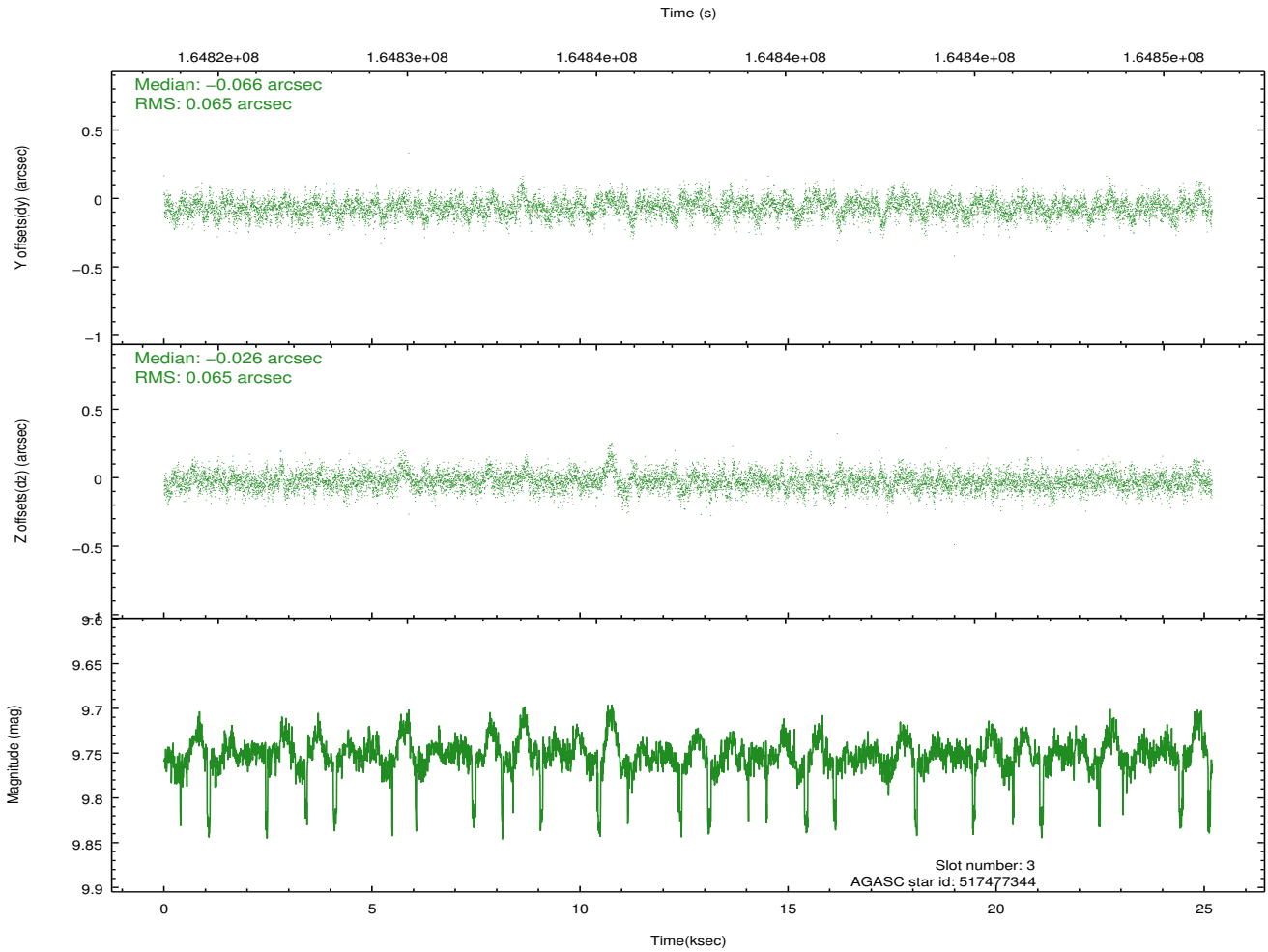
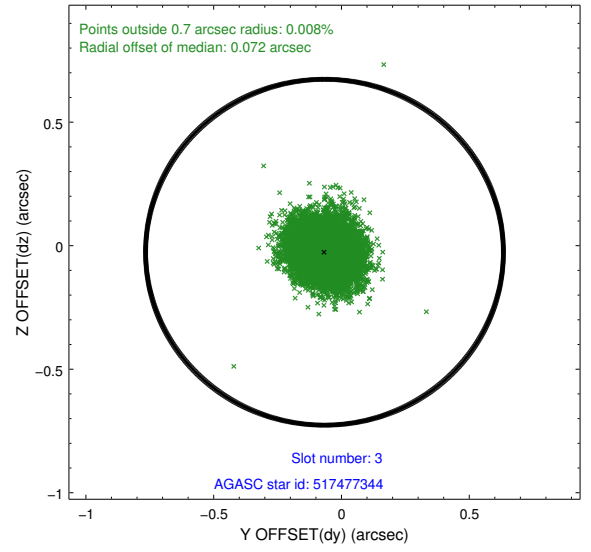
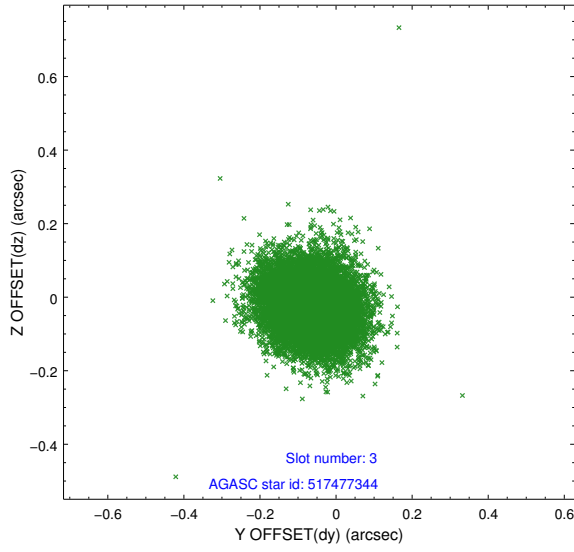


Slot Statistics

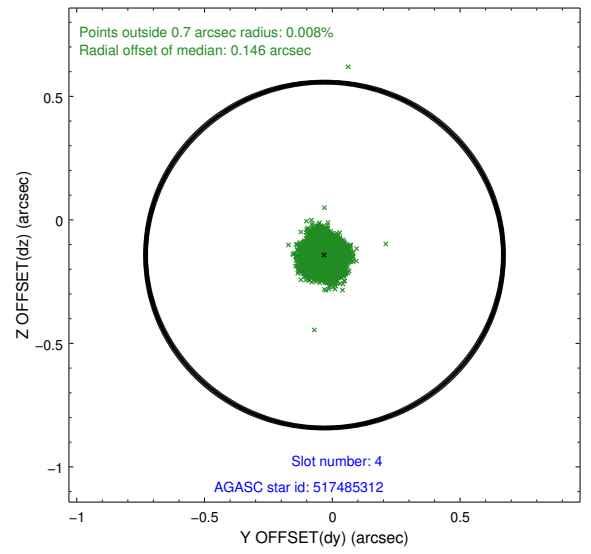
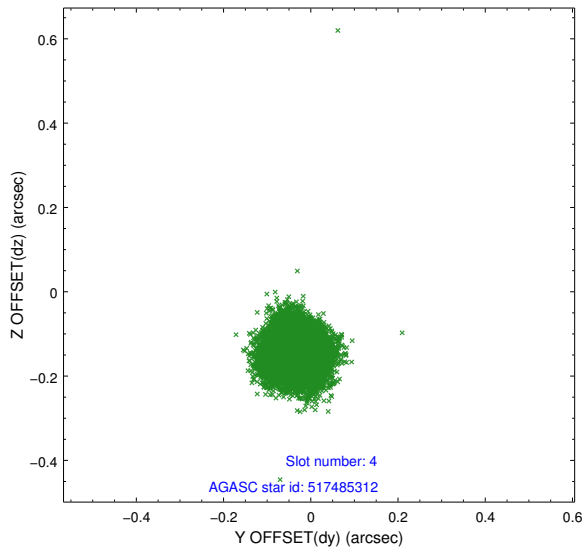
slot	status	id	mag	n_pts	med_dy	med_dz	dr1	dr2	ra	dec	mean_y	mean_z
0	FID	ACIS-I-1	7.24	6141	-0.033	0.072	0.007	0.011	0.000000	0.000000	937.90	-831.72
1	FID	ACIS-I-5	7.24	6142	-0.044	0.029	0.006	0.010	0.000000	0.000000	-1810.14	1065.68
2	FID	ACIS-I-6	7.26	6142	-0.014	-0.031	0.007	0.011	0.000000	0.000000	403.35	1710.24
3	GUIDE	517477344	9.75	12260	-0.066	-0.026	0.097	0.159	301.507004	59.779255	180.11	1022.21
4	GUIDE	517485312	7.89	12286	-0.031	-0.142	0.055	0.088	301.032870	59.662296	-565.49	1623.95
5	GUIDE	517473376	9.61	12276	-0.050	0.066	0.117	0.192	302.709648	59.024693	-1309.19	-2142.55
6	GUIDE	517475800	9.23	12280	-0.003	0.109	0.107	0.168	303.181010	59.931462	1997.17	-1459.19
7	GUIDE	554710096	9.50	12280	0.156	-0.004	0.105	0.168	301.819415	60.290524	2084.30	1303.04

2.4 Star Slots

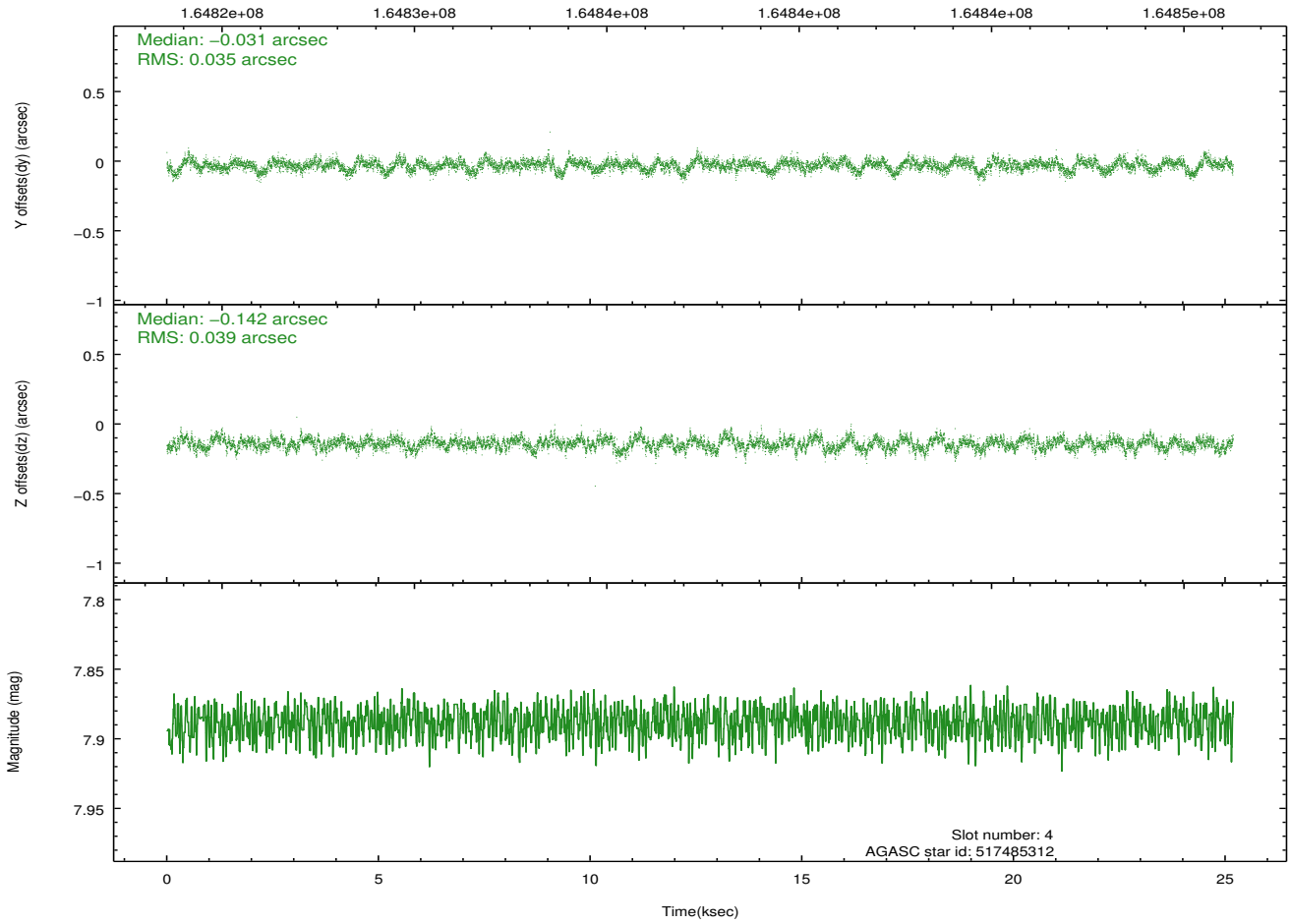
2.4.1 Slot 3



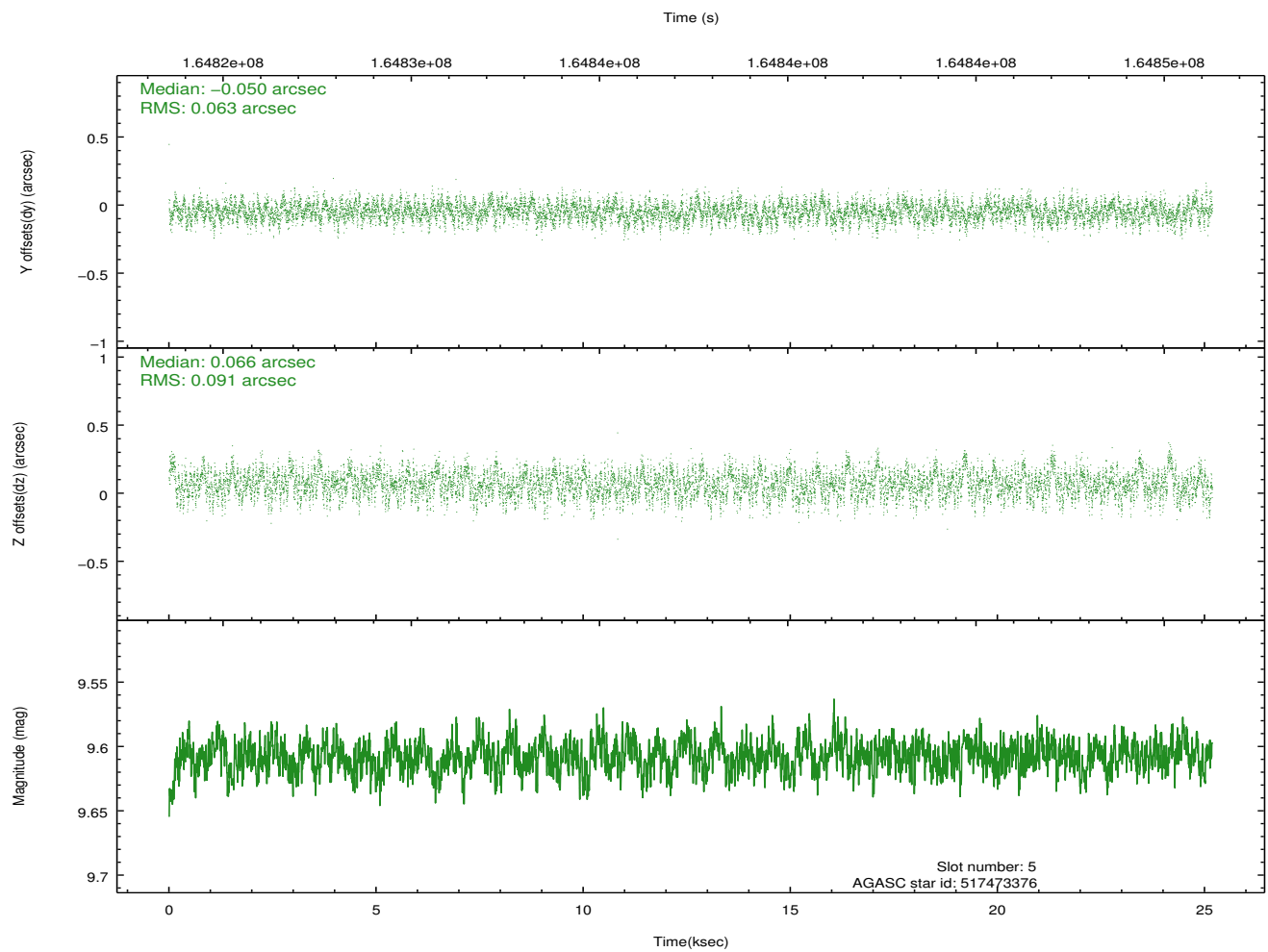
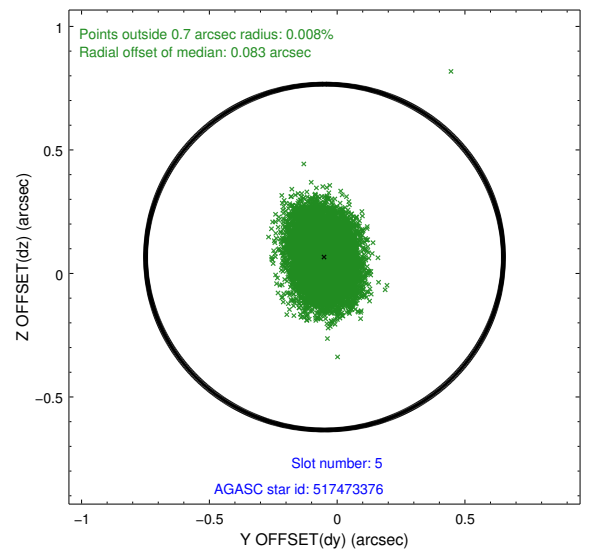
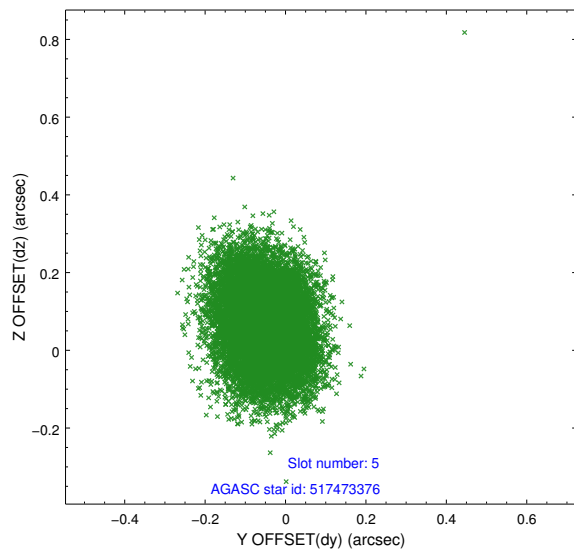
2.4.2 Slot 4



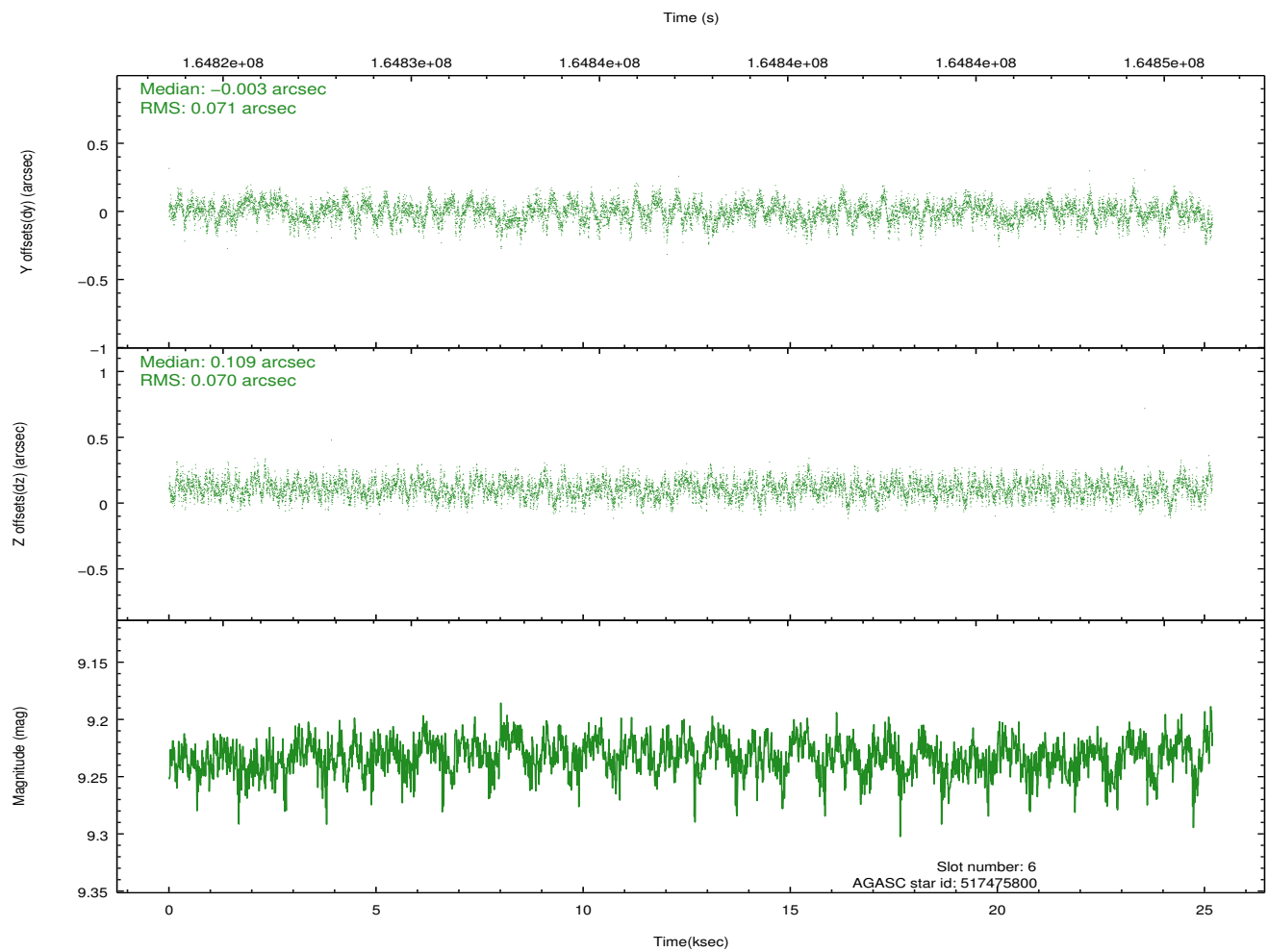
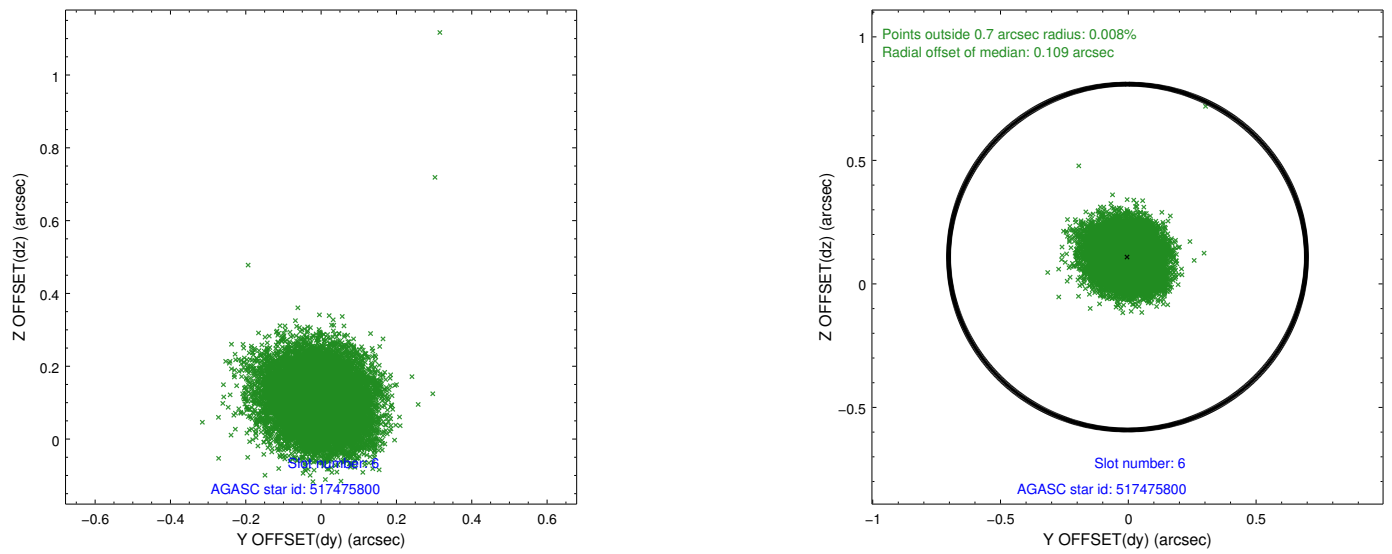
Time (s)



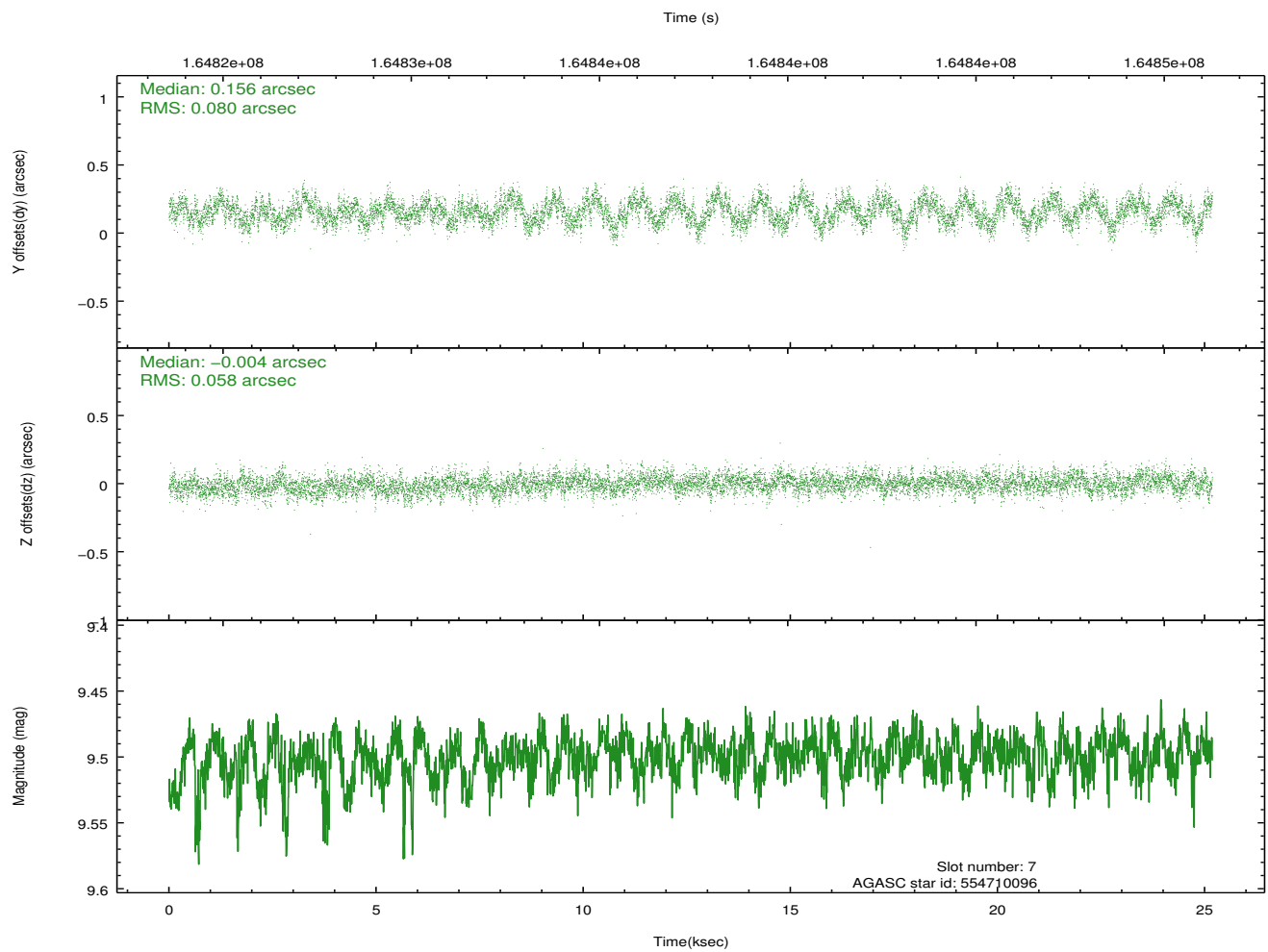
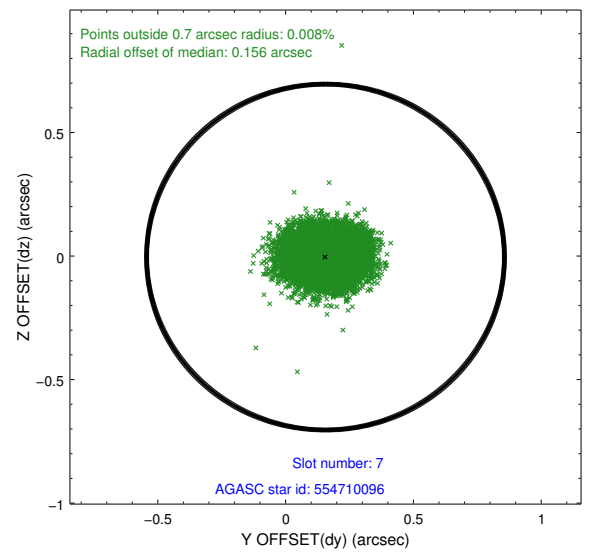
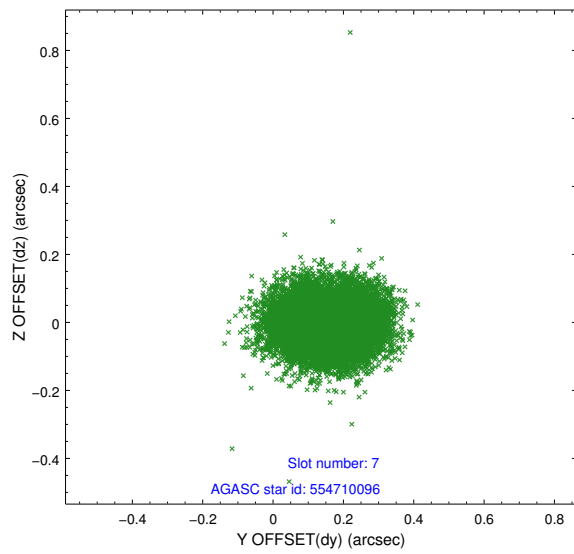
2.4.3 Slot 5



2.4.4 Slot 6

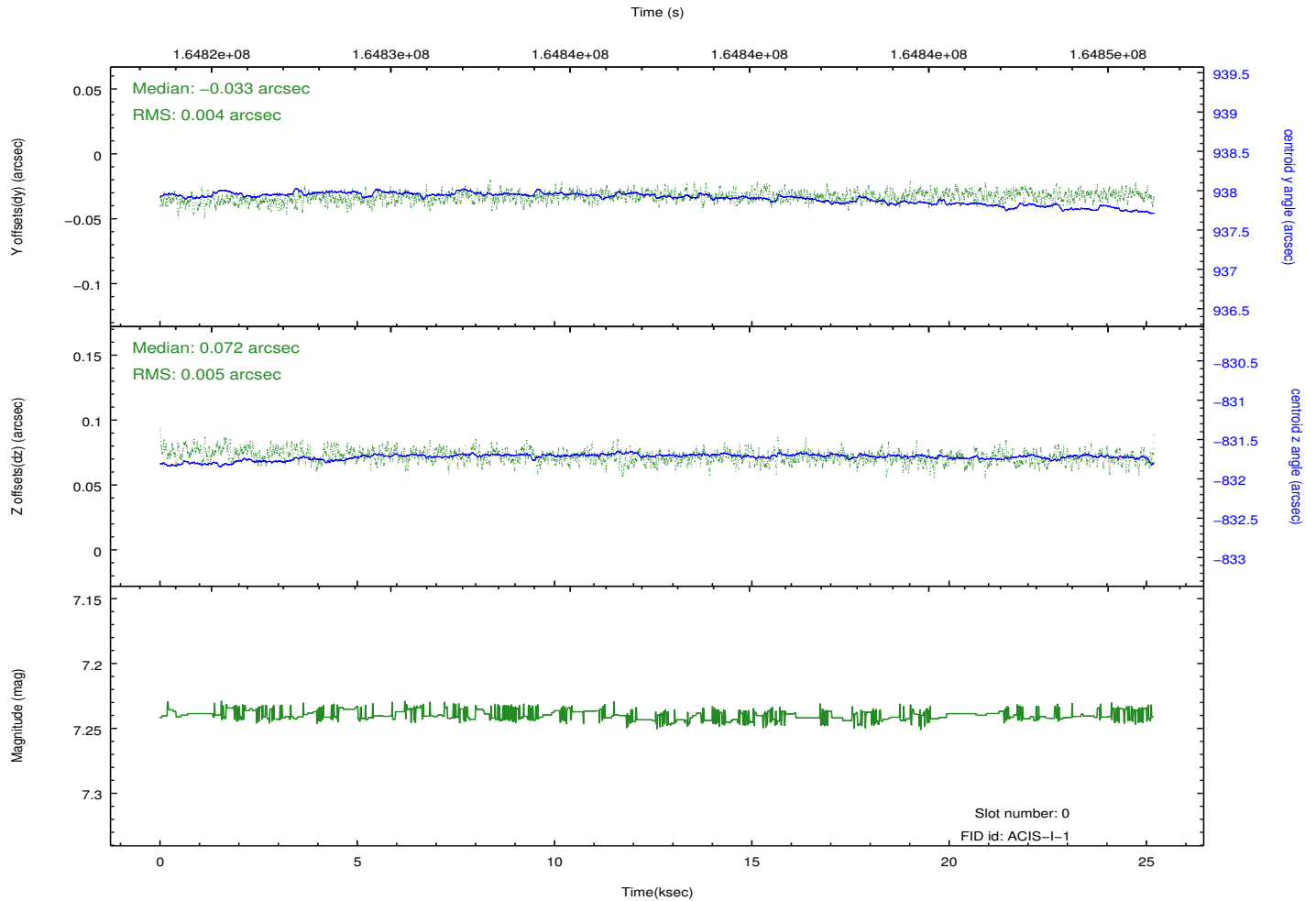
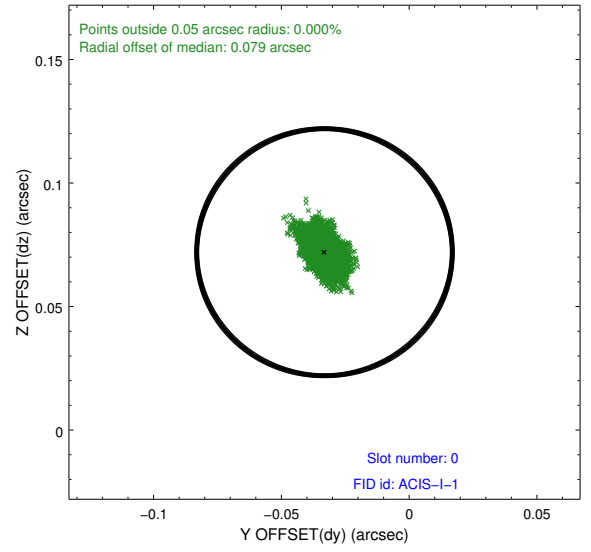
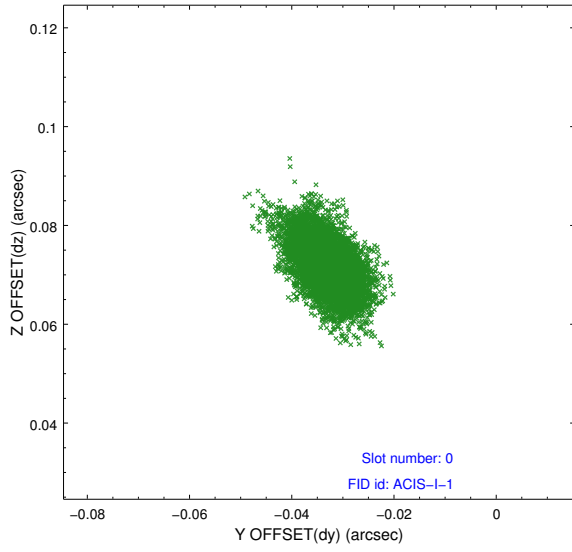


2.4.5 Slot 7

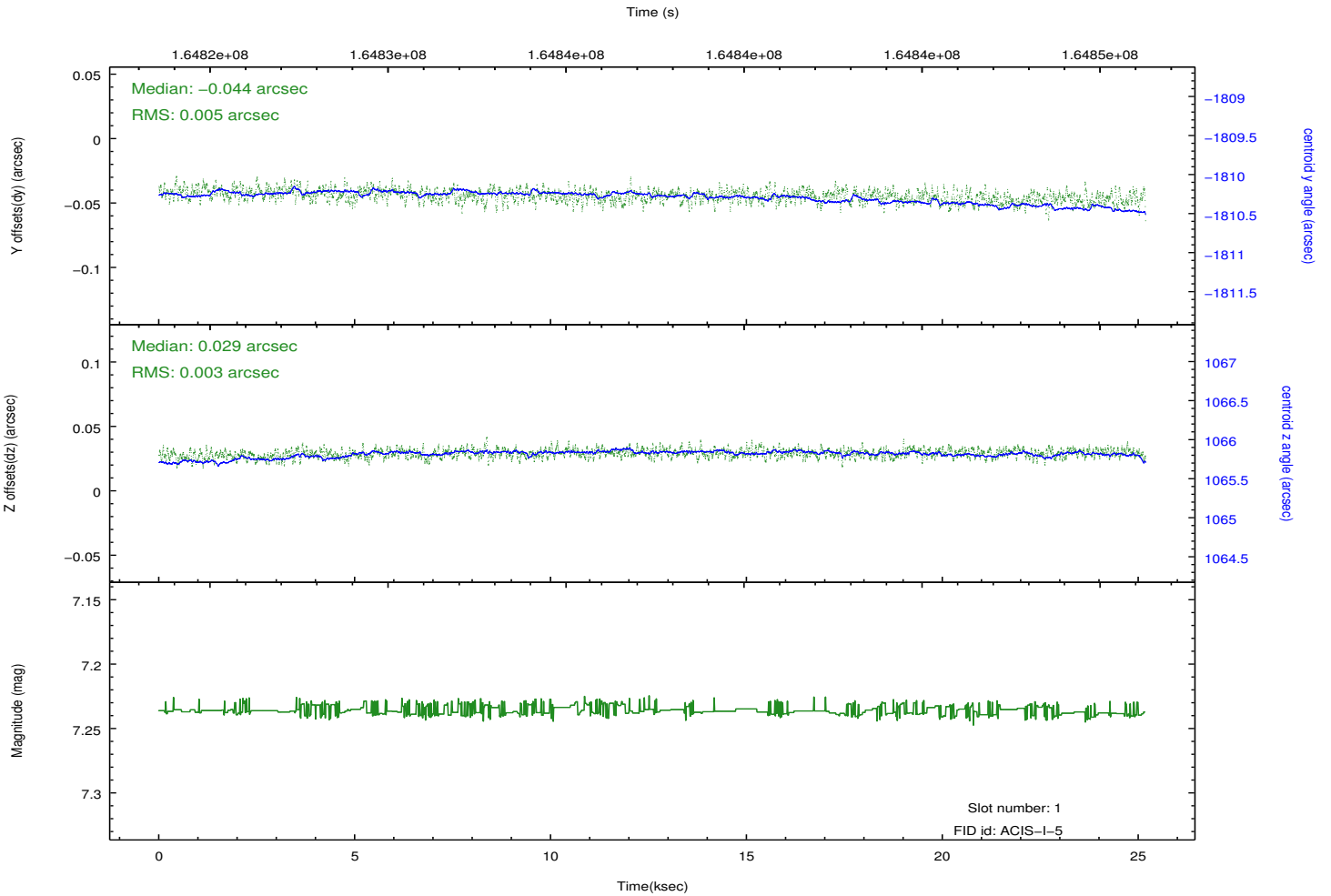
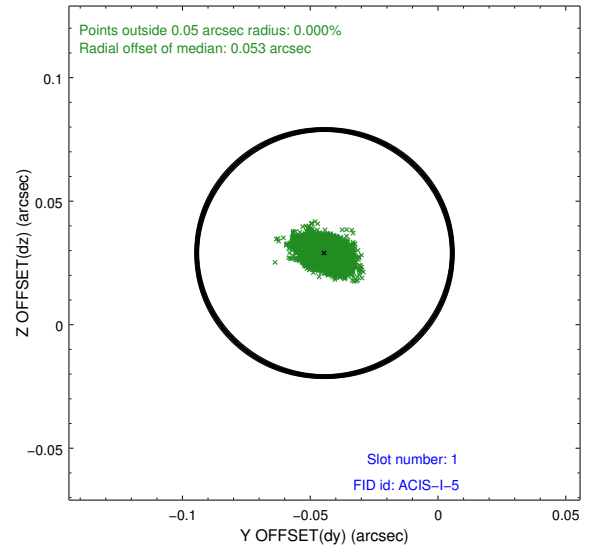
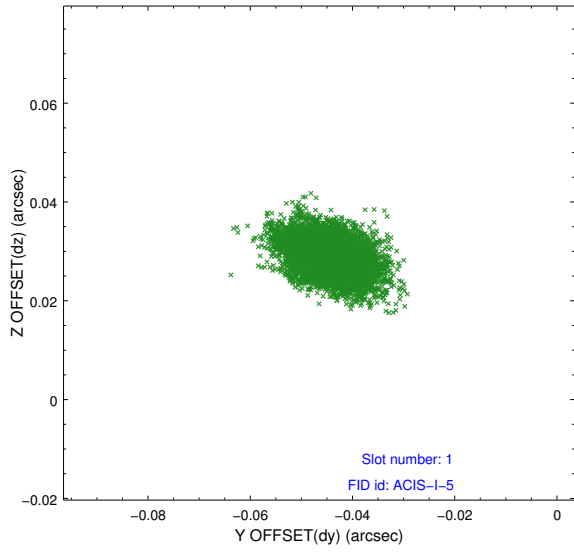


2.5 FID Slots

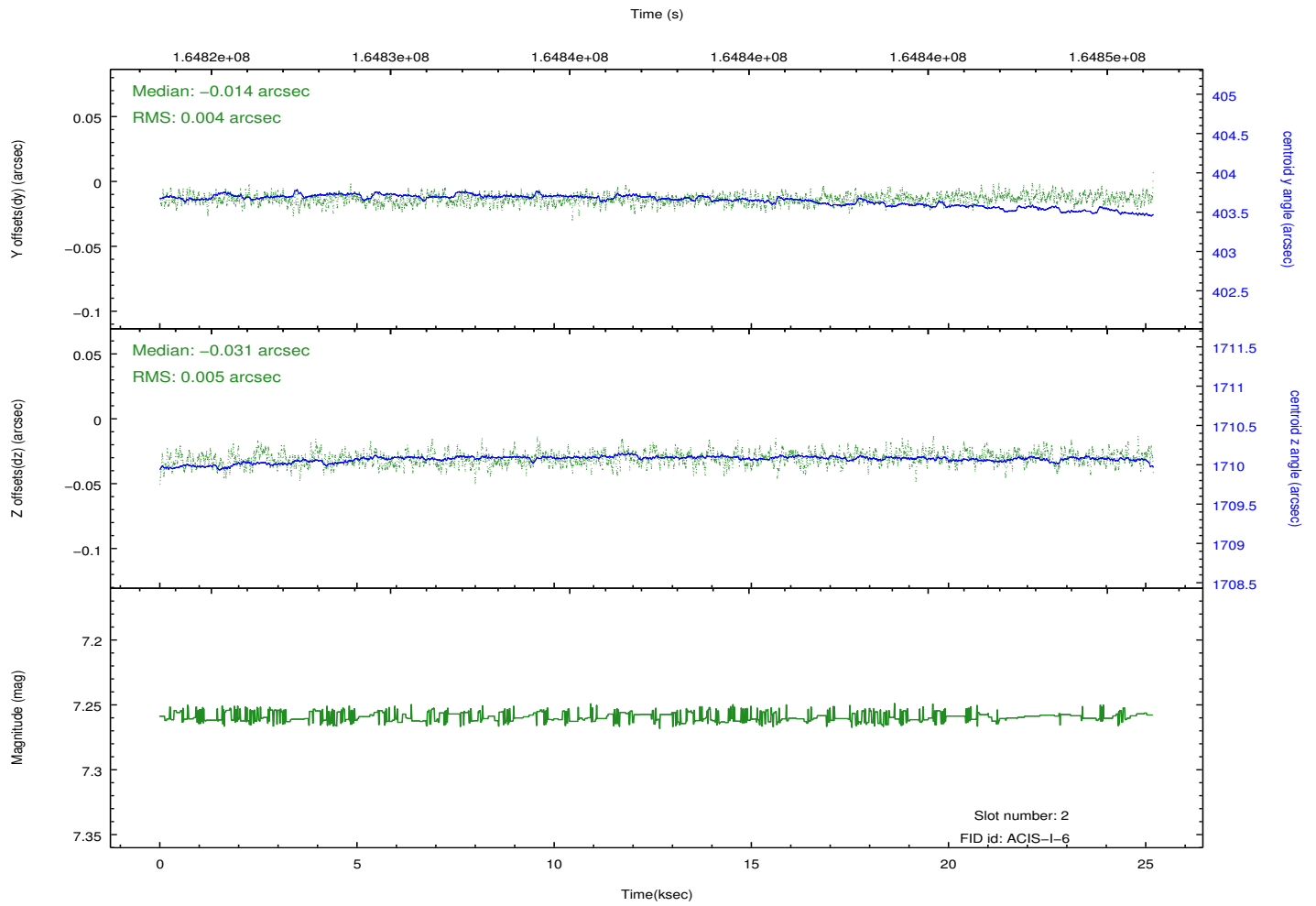
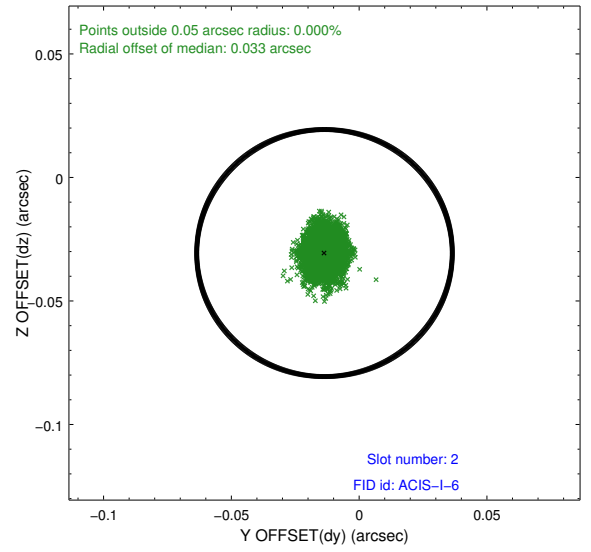
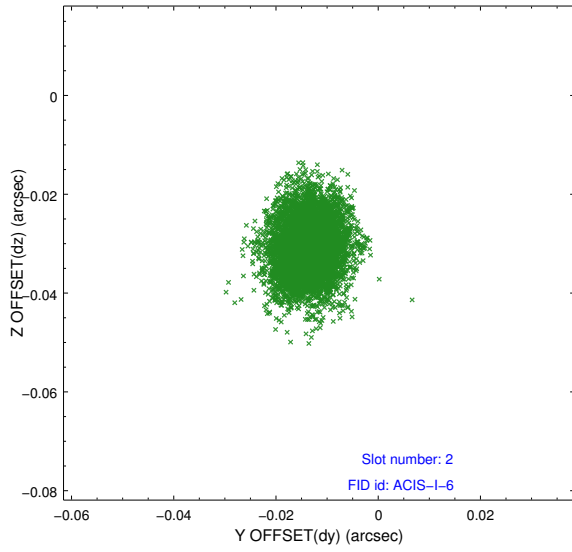
2.5.1 Slot 0



2.5.2 Slot 1



2.5.3 Slot 2



A Summary

A.1 Status

V&V Scientist	Jen Lauer
V&V Date (YYYY-MM-DD)	2012.11.09
V&V Edition	1
V&V Disposition and Status	OK
V&V Charge Time	25.184

A.2 Comments