

V&V Reference Report

L2 ASCDS Version : 8.4.5

Observation 4194 - L2 Version 3
Chandra X-Ray Center

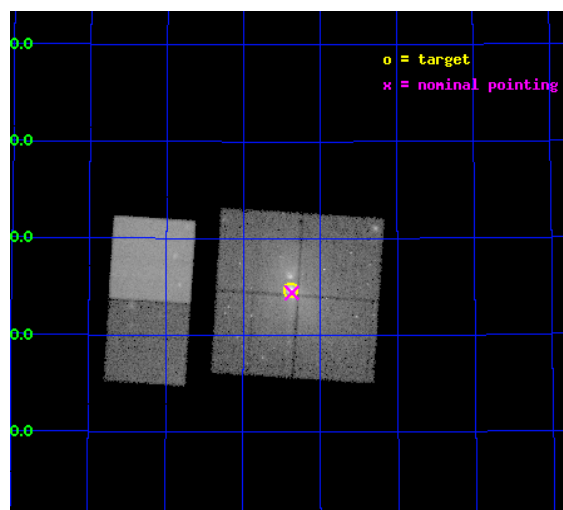
L2 Processing Date : Nov 4 2012

Contents

1	Front	2
2	OBI	3
2.1	OBI	3
2.1.1	Images	3
2.1.2	Bias	3
2.1.3	Parameters	4
2.1.4	Events	4
2.2	Compared Parameters	5
2.3	Aspect	6
2.4	Star Slots	9
2.4.1	Slot 3	9
2.4.2	Slot 4	10
2.4.3	Slot 5	11
2.4.4	Slot 6	12
2.4.5	Slot 7	13
2.5	FID Slots	14
2.5.1	Slot 0	14
2.5.2	Slot 1	15
2.5.3	Slot 2	16
A	Summary	17
A.1	Status	17
A.2	Comments	17

1 Front

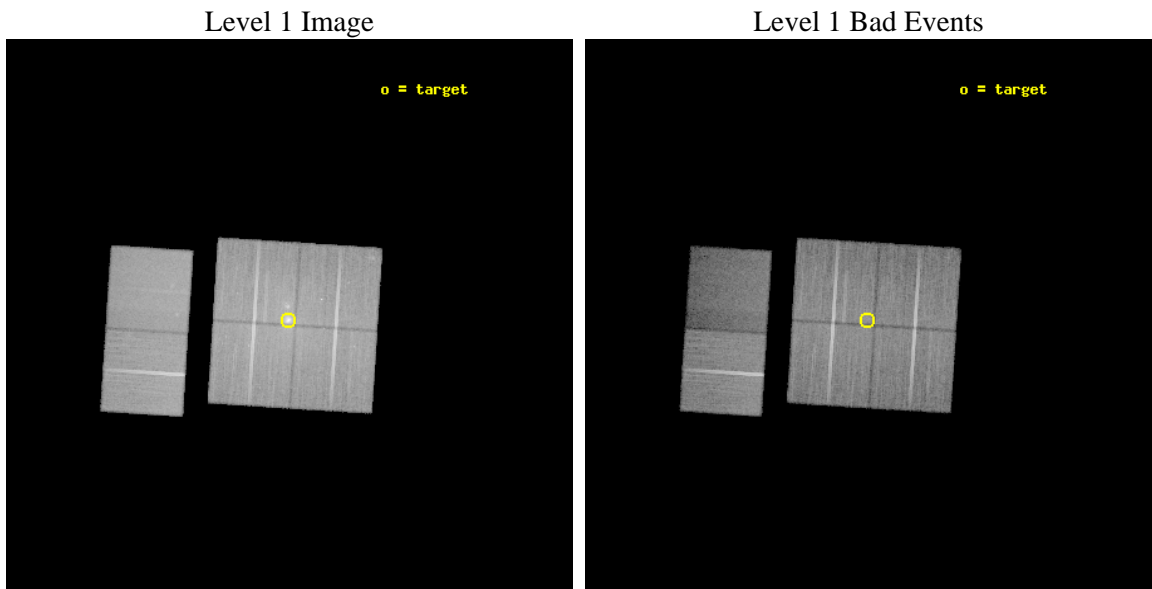
seq_num	800350	Sequence number
obs_id	4194	Observation id
title	ENTROPY FLUCTUATIONS IN GALAXY GROUPS	Proposal title
observer	Prof Trevor Ponman	Principal investigator
object	NGC 6338	Source name
dtcycle	0	
cycle	P	events from which exps? Prim/Second/Both
ra_targ	258.845417	Observer's specified target RA [deg]
dec_targ	57.411111	Observer's specified target Dec [deg]
ra_nom	258.84256142854	Nominal RA [deg]
dec_nom	57.406723150418	Nominal Dec [deg]
roll_nom	273.66908296838	Nominal Roll [deg]
revision	3	Processing version of data
ontime	47935.67181021	Sum of GTIs [s]
livetime	47328.681470353	Livetime [s]
ontime0	47938.912929982	Sum of GTIs [s]
ontime1	47935.671929806	Sum of GTIs [s]
ontime2	47942.153880239	Sum of GTIs [s]
ontime3	47935.67181021	Sum of GTIs [s]
ontime6	47942.1539101	Sum of GTIs [s]
ontime7	47935.671919763	Sum of GTIs [s]
l2events	299665	Number of level 2 events



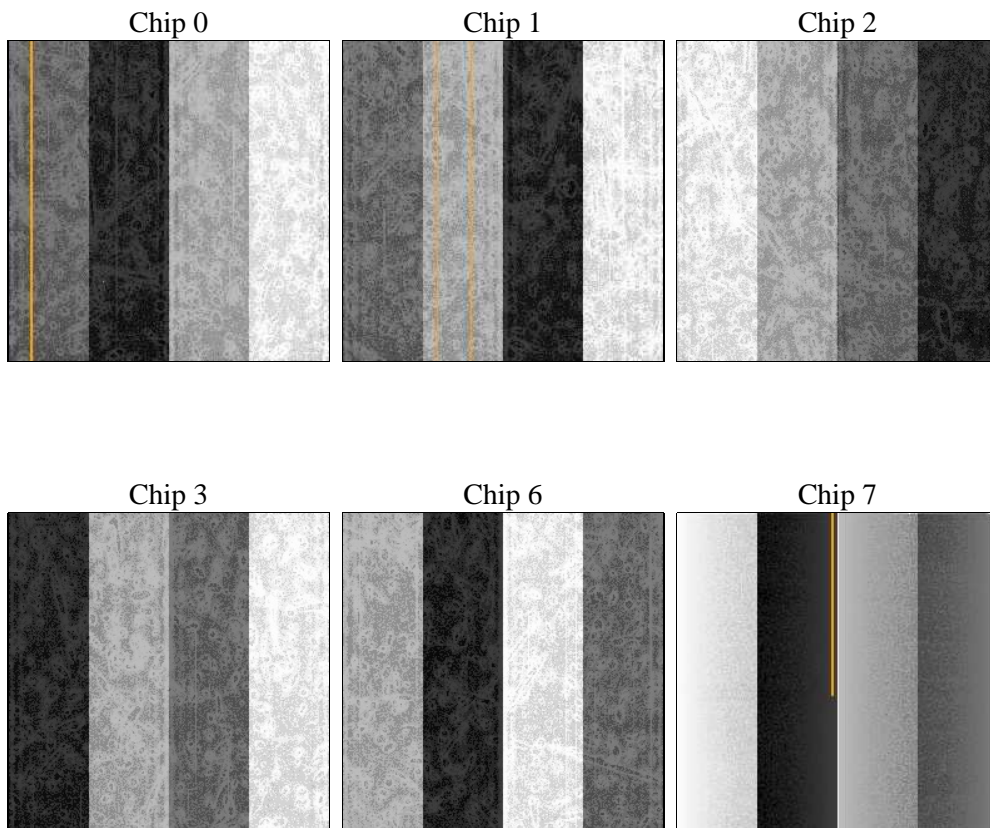
2 OBI

2.1 OBI

2.1.1 Images



2.1.2 Bias



2.1.3 Parameters

obi_num	0	Obi number	sched_exp_time	48000.000000	[s] Scheduled observation exposure time
ascdsver	8.4.5	Processing system revision	ontime	47935.67181021	Sum of GTIs [s]
caldbver	4.5.2	 	ontime0	47938.912929982	Sum of GTIs [s]
date	2012-11-04T12:01:46	Date and time of file creation	ontime1	47935.671929806	Sum of GTIs [s]
revision	3	Processing version of data	ontime2	47942.153880239	Sum of GTIs [s]
			ontime3	47935.67181021	Sum of GTIs [s]
			ontime6	47942.1539101	Sum of GTIs [s]
			ontime7	47935.671919763	Sum of GTIs [s]
			l1events	1506481	Number of level 1 events

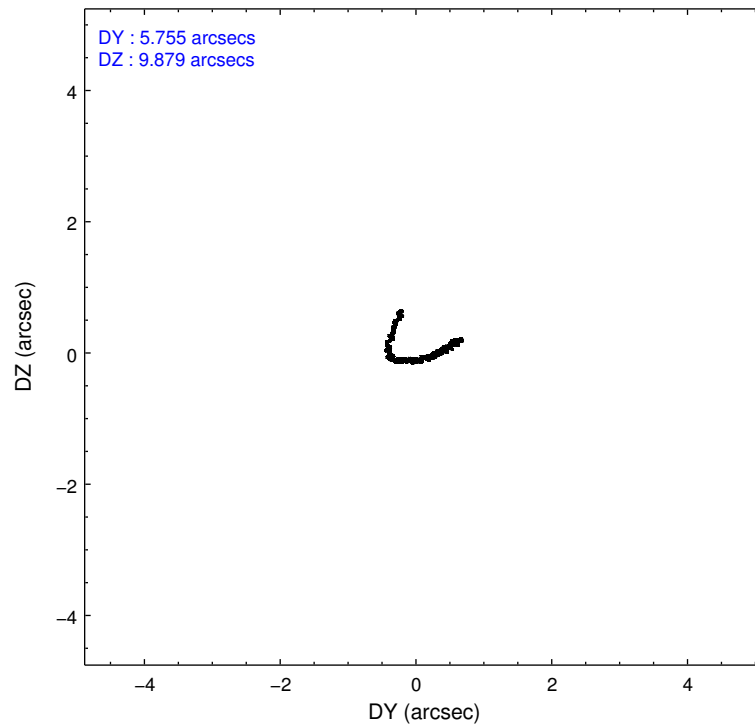
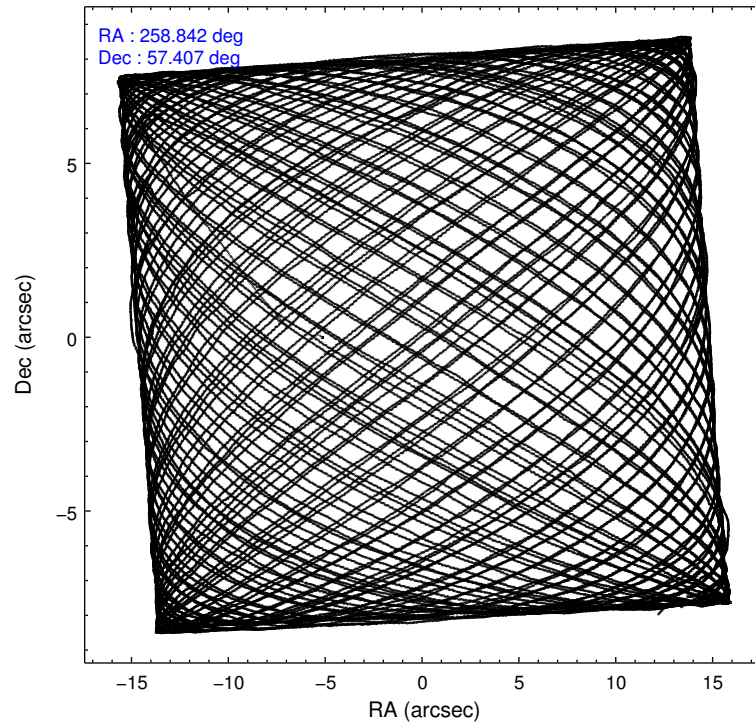
2.1.4 Events

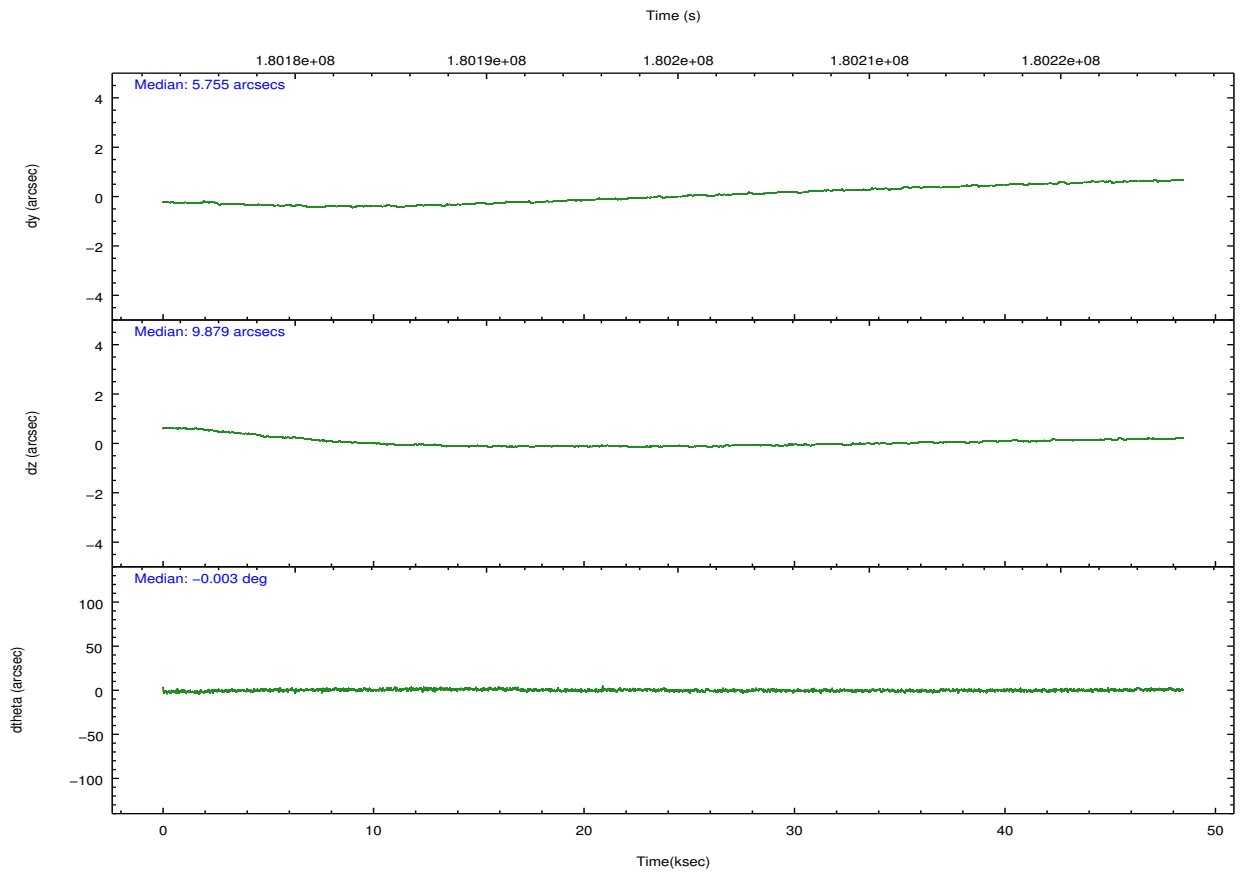
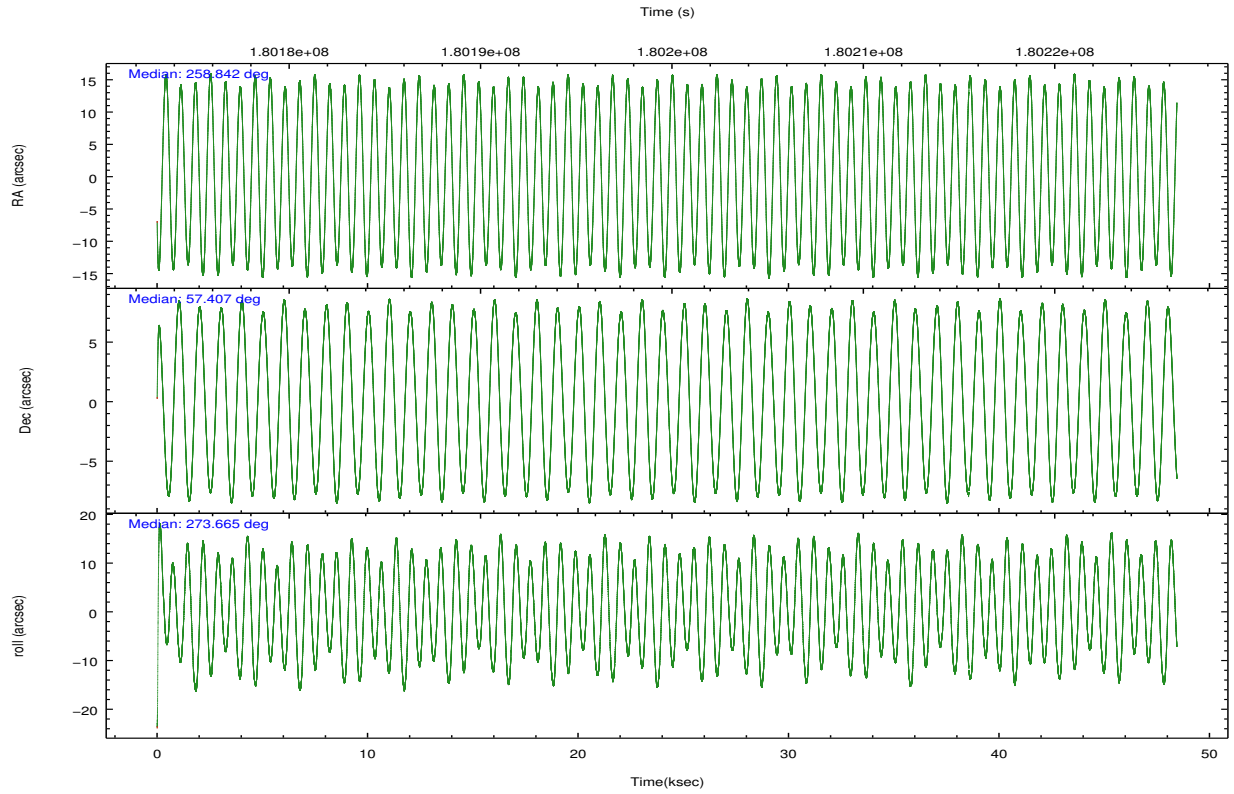
	ccd 0	ccd 1	ccd 2	ccd 3	ccd 6	ccd 7		ccd 0	ccd 1	ccd 2	ccd 3	ccd 6	ccd 7
level 1 events	240770	235641	265415	276575	249098	238982	grade 0 events	21144	21172	22087	40172	11017	13209
rejected events	202303	196184	226384	216987	222175	113191		8%	8%	8%	14%	4%	5%
rejected %	84%	83%	85%	78%	89%	47%	grade 1 events	173	147	162	294	120	236
								0%	0%	0%	0%	0%	0%
							grade 2 events	6800	6698	6793	7946	5436	26184
								2%	2%	2%	2%	2%	10%
							grade 3 events	3093	3289	2878	3444	2778	12319
								1%	1%	1%	1%	1%	5%
							grade 4 events	2958	3282	3057	3411	2804	12114
								1%	1%	1%	1%	1%	5%
							grade 5 events	6888	7580	6521	7921	8127	24253
								2%	3%	2%	2%	3%	10%
							grade 6 events	4477	5018	4218	4619	4891	61998
								1%	2%	1%	1%	1%	25%
							grade 7 events	195237	188455	219699	208768	213925	88669
								81%	79%	82%	75%	85%	37%

2.2 Compared Parameters

Parameter	Planned	Actual	Parameter	Planned	Actual
Instrument	ACIS	ACIS	Obspar format version number	7	7
Detector	ACIS-012367	ACIS-012367	Obspar file type	PREDICTED	ACTUAL
Grating	NONE	NONE	Obspar update status	NONE	UPDATED
Data mode	VFAINT	VFAINT	Number of optional ACIS chips dropped	0	0
Observation mode	POINTING	POINTING	On-chip summing requested	N	N
[deg] Pointing RA	258.814189	258.8425614285449	Subarray requested	NONE	NONE
[deg] Pointing Dec	57.429457	57.40672315041825	Alternating exposures requested	N	N
[deg] Pointing Roll	273.484315	273.6690829683797	[s] Primary exposure time	0.000000	3.2
[mm] SIM focus pos	-0.782348	-0.7809083437167272			
[mm] SIM defocus	0	0.001439871863259334			
[mm] SIM translation stage pos	-233.592463	-233.5874344608287			
[mm] SIM translation stage offset	0	-0.005018542100998502			
[s] Observation start time (MET)	180175974.184000	180174881.90356			
Observation start date	2003-09-17T08:51:50	2003-09-17T08:34:41			
[s] Observation end time (MET)	180223974.184000	180224735.85569			
Observation end date	2003-09-17T22:11:50	2003-09-17T22:25:35			
Read mode	TIMED	TIMED			

2.3 Aspect



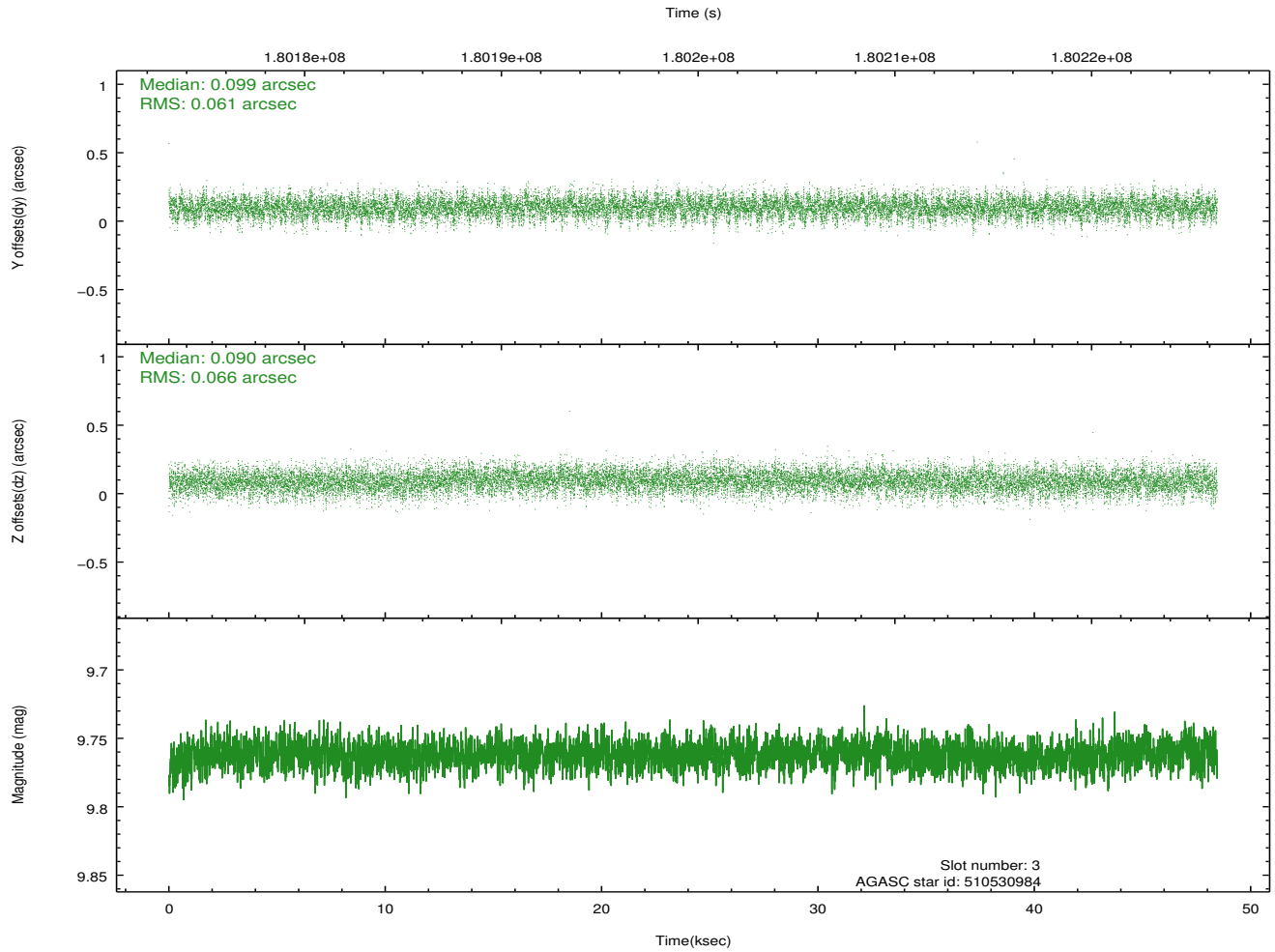
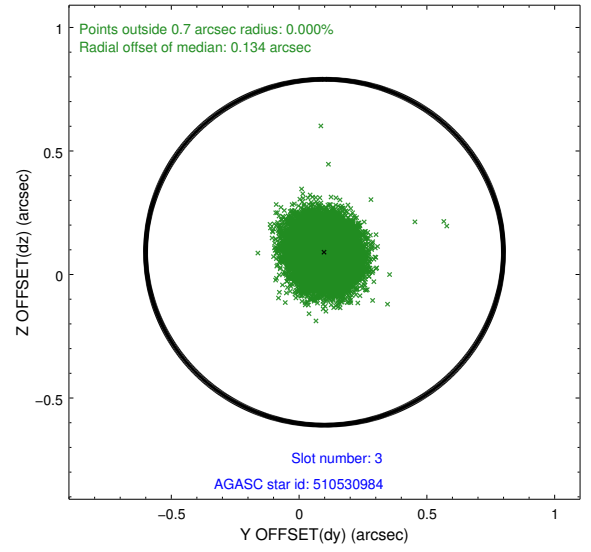
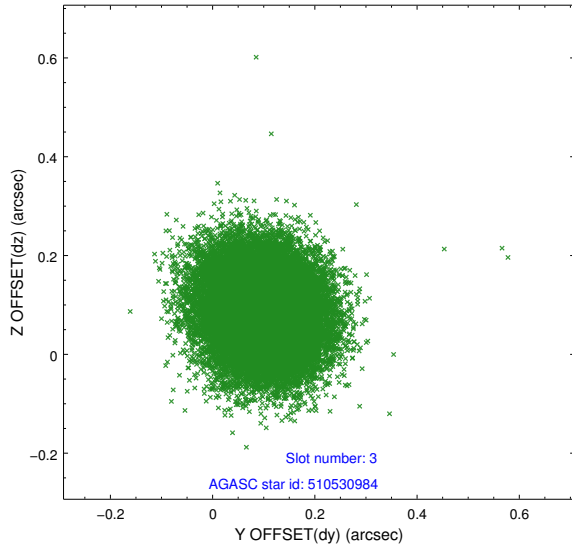


Slot Statistics

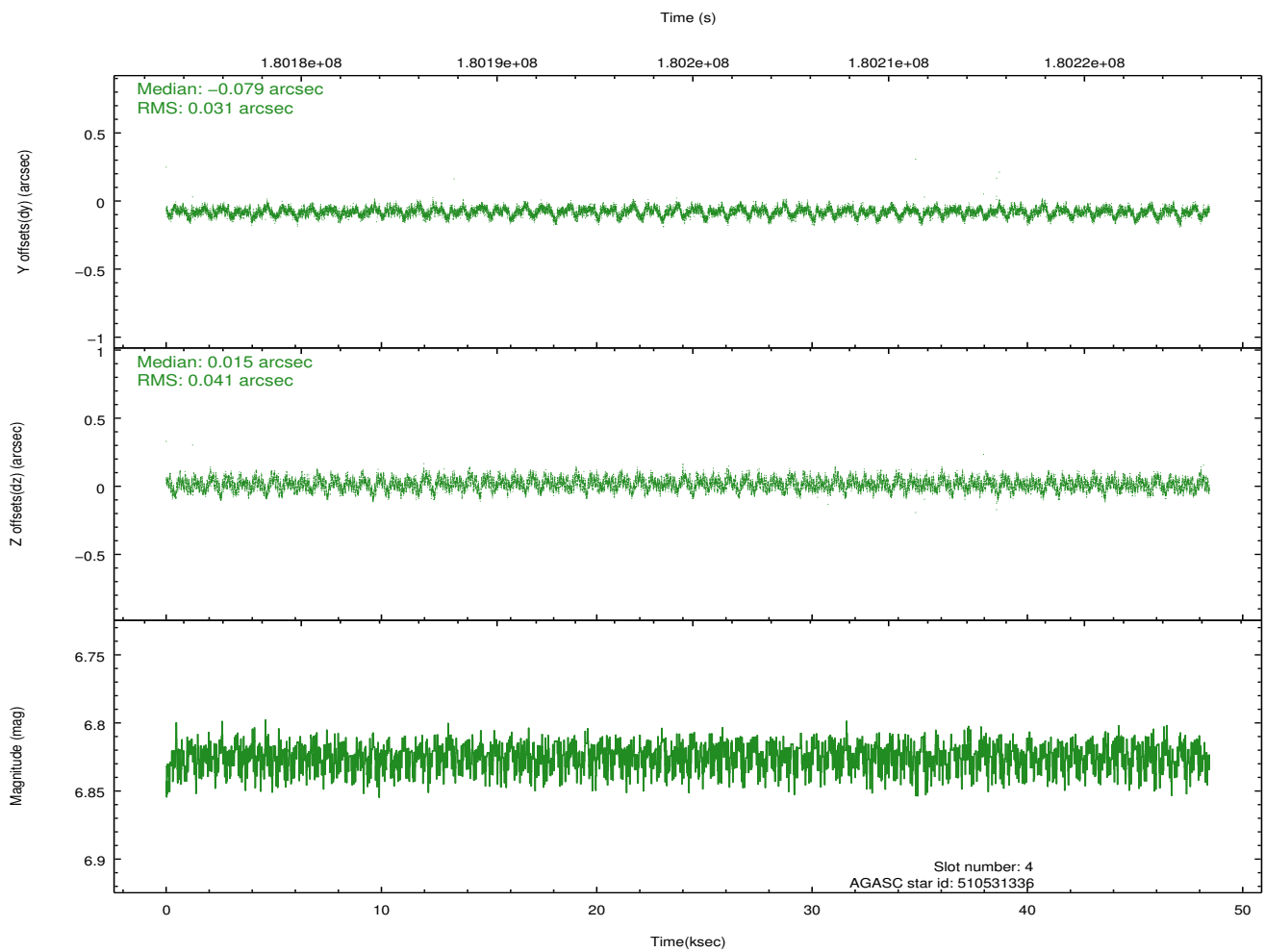
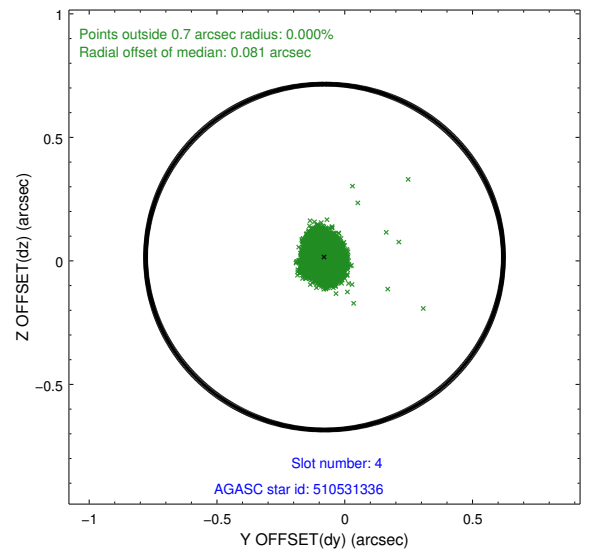
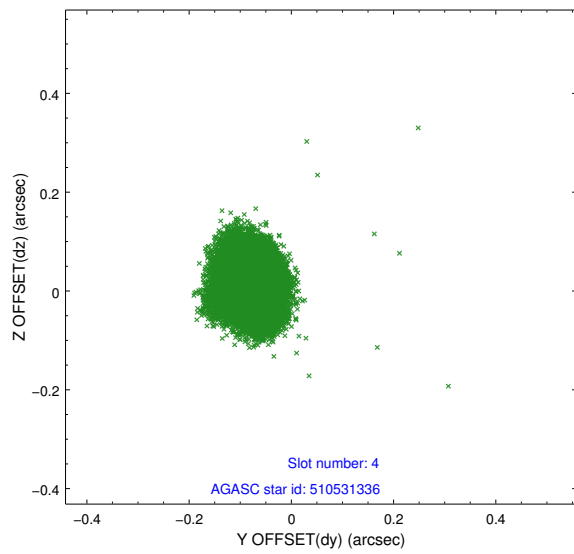
slot	status	id	mag	n_pts	med_dy	med_dz	dr1	dr2	ra	dec	mean_y	mean_z
0	FID	ACIS-I-1	7.24	11808	-0.046	0.064	0.016	0.031	0.000000	0.000000	933.88	-833.33
1	FID	ACIS-I-2	7.14	11808	-0.096	-0.048	0.013	0.024	0.000000	0.000000	-760.27	-839.89
2	FID	ACIS-I-4	7.18	11809	0.046	0.053	0.015	0.026	0.000000	0.000000	2153.84	1066.49
3	GUIDE	510530984	9.76	23611	0.099	0.090	0.096	0.154	257.843013	57.888060	-1773.81	-1753.71
4	GUIDE	510531336	6.82	23622	-0.079	0.015	0.055	0.088	258.217938	57.862631	-1630.83	-1044.53
5	GUIDE	510537304	7.31	23622	-0.038	-0.018	0.054	0.086	257.977845	57.967610	-2040.70	-1475.69
6	GUIDE	510537624	9.55	23594	0.051	-0.086	0.118	0.191	259.862211	57.989137	-1905.07	2119.67
7	GUIDE	510537952	9.44	23612	-0.033	0.001	0.097	0.155	259.803735	57.190117	963.29	1875.64

2.4 Star Slots

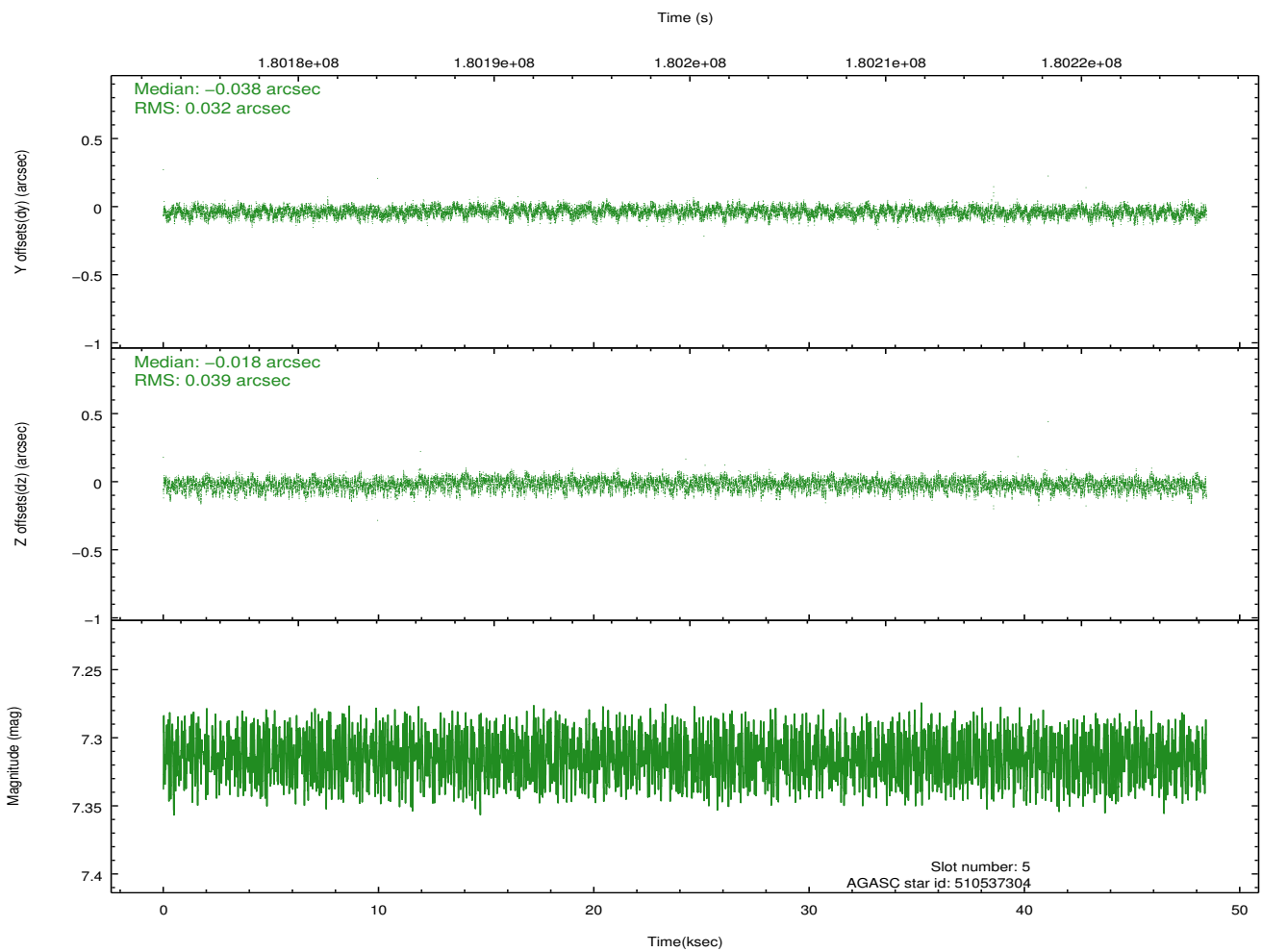
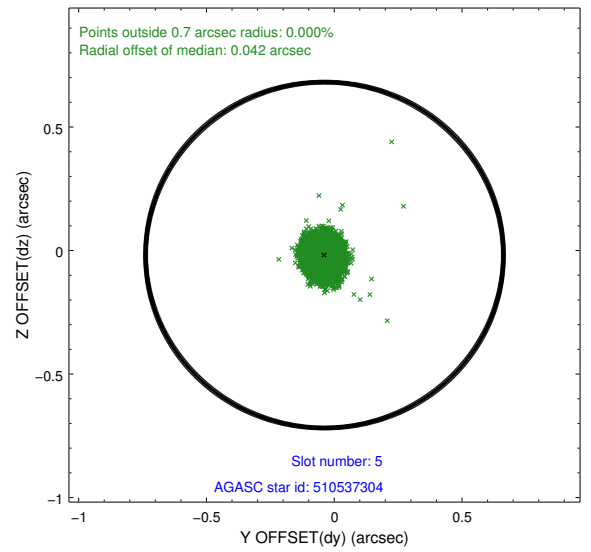
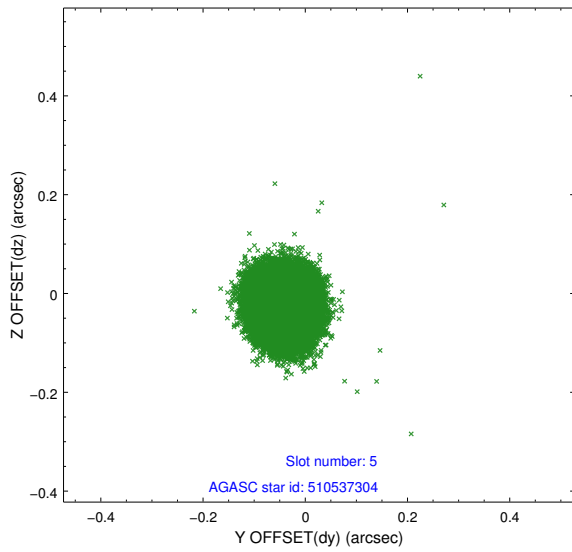
2.4.1 Slot 3



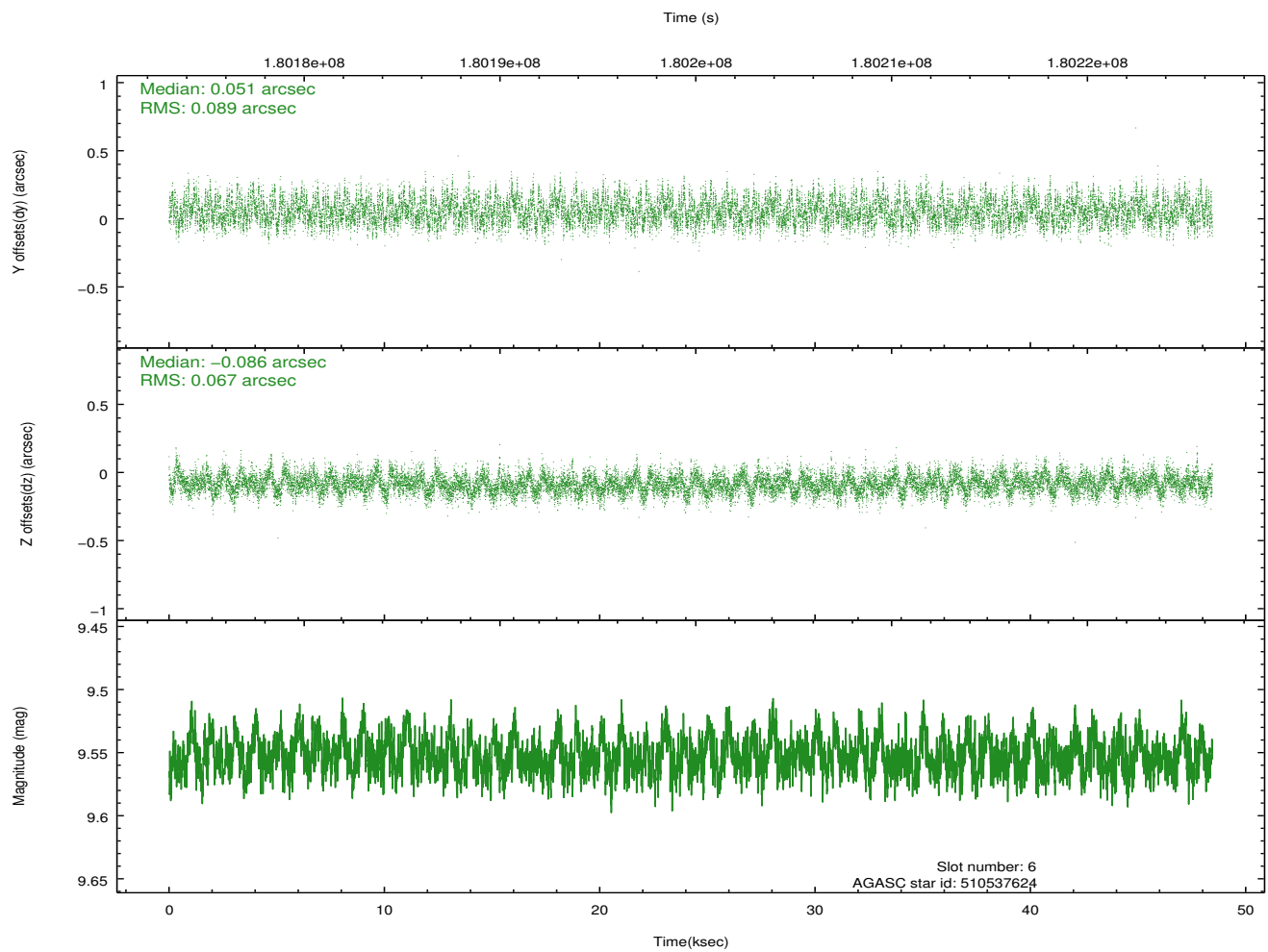
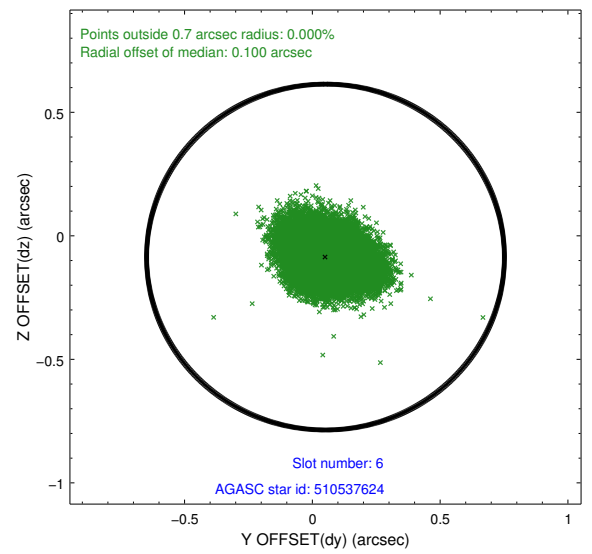
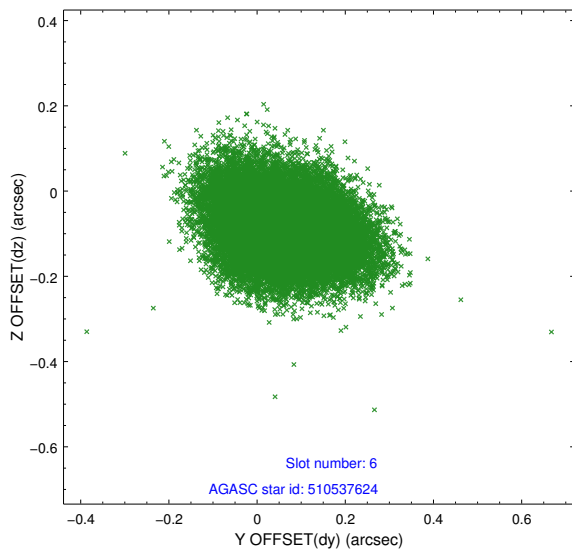
2.4.2 Slot 4



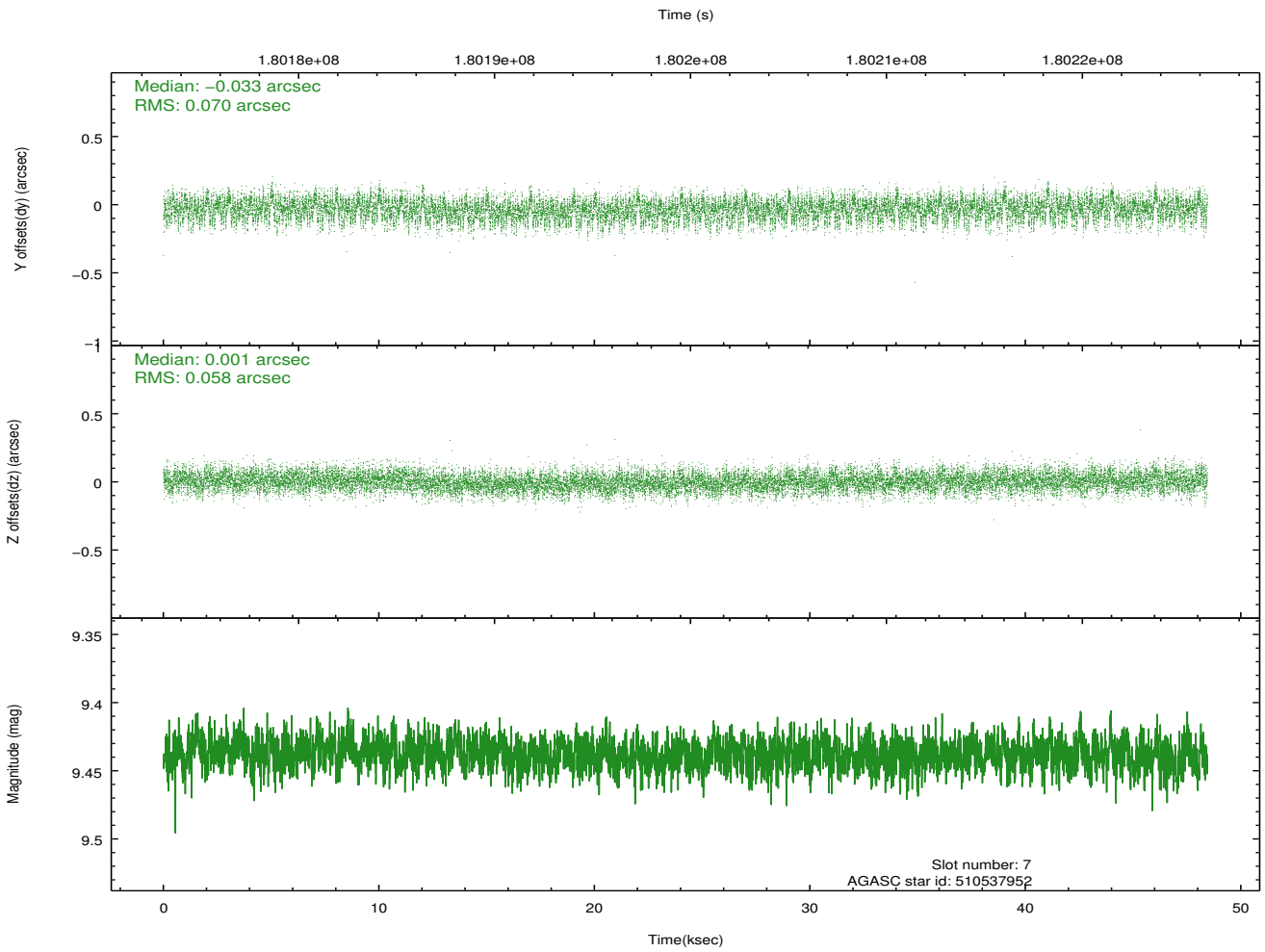
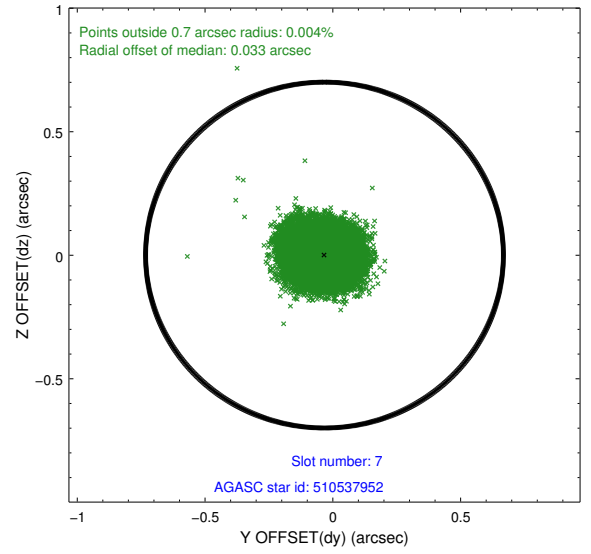
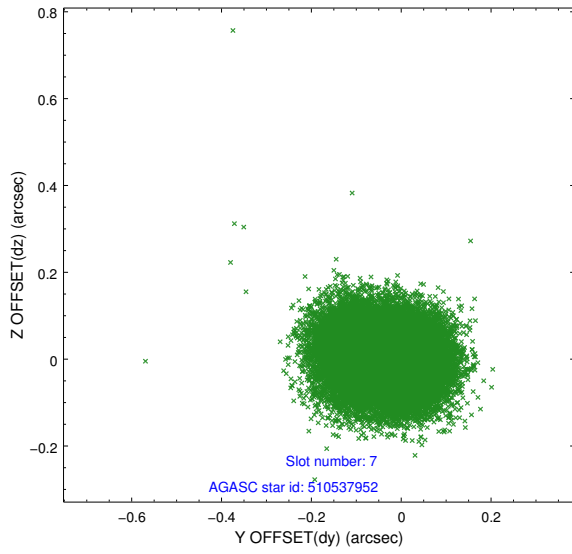
2.4.3 Slot 5



2.4.4 Slot 6

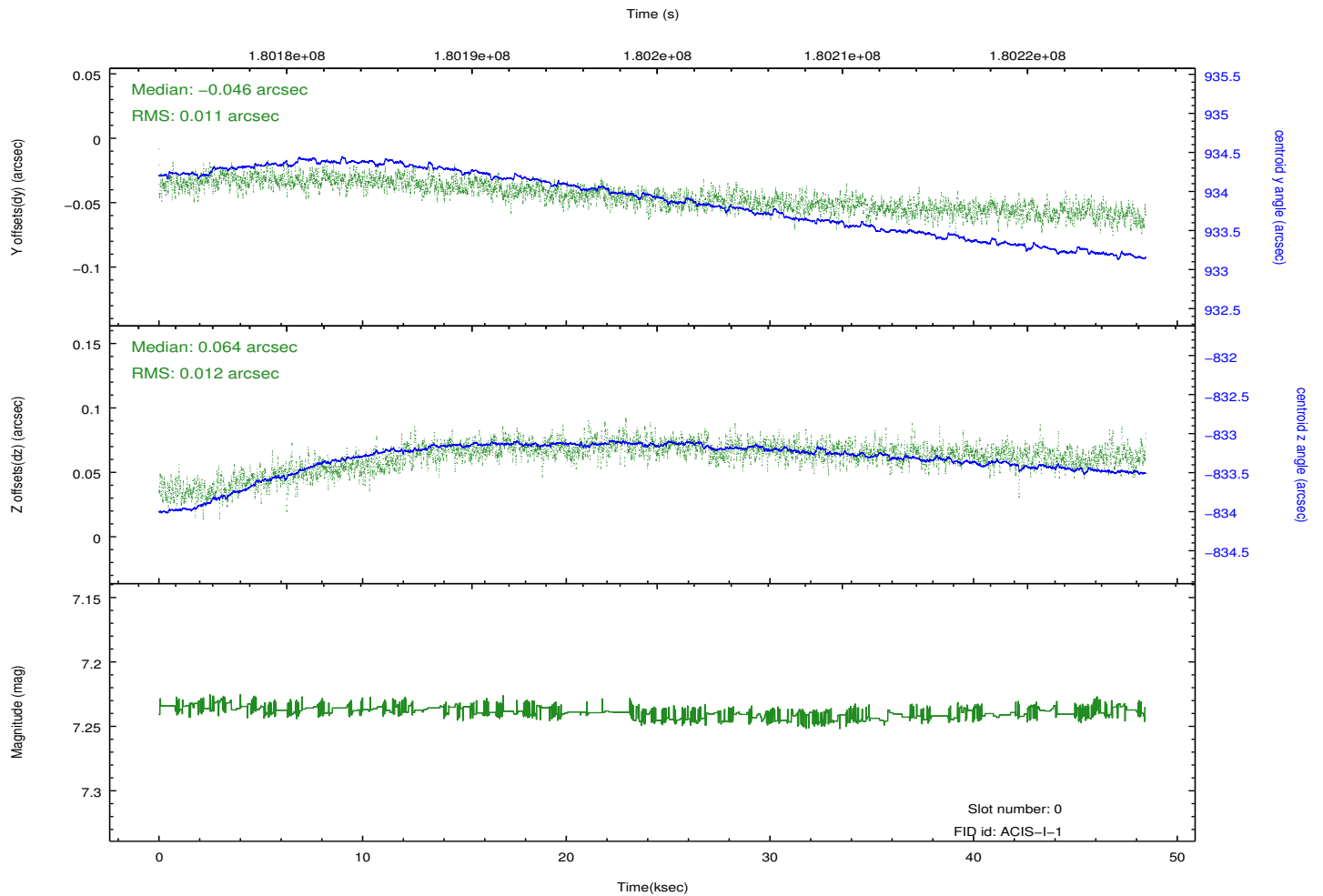
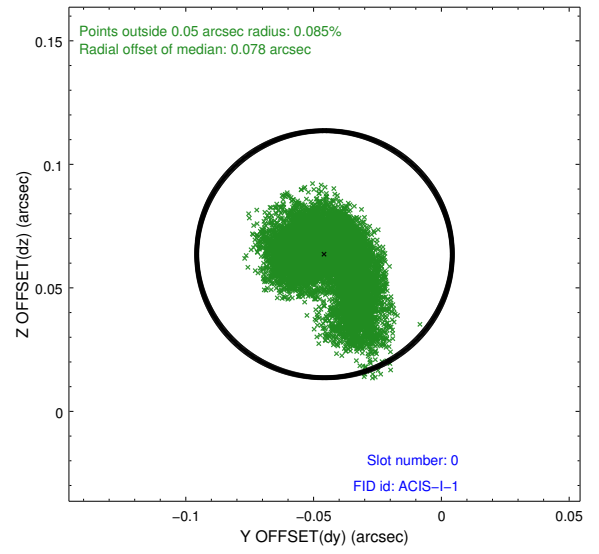
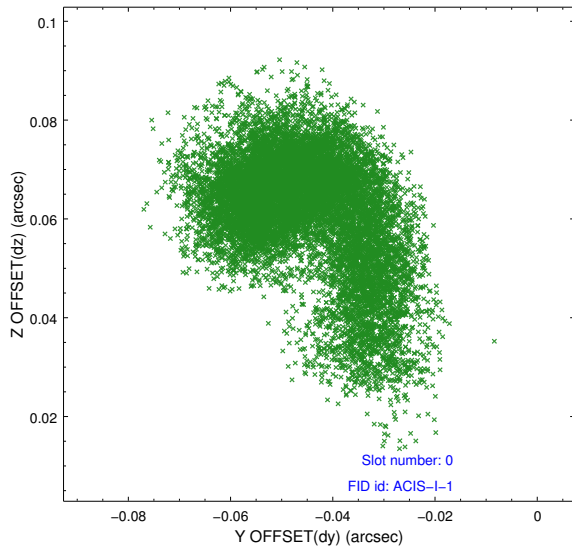


2.4.5 Slot 7

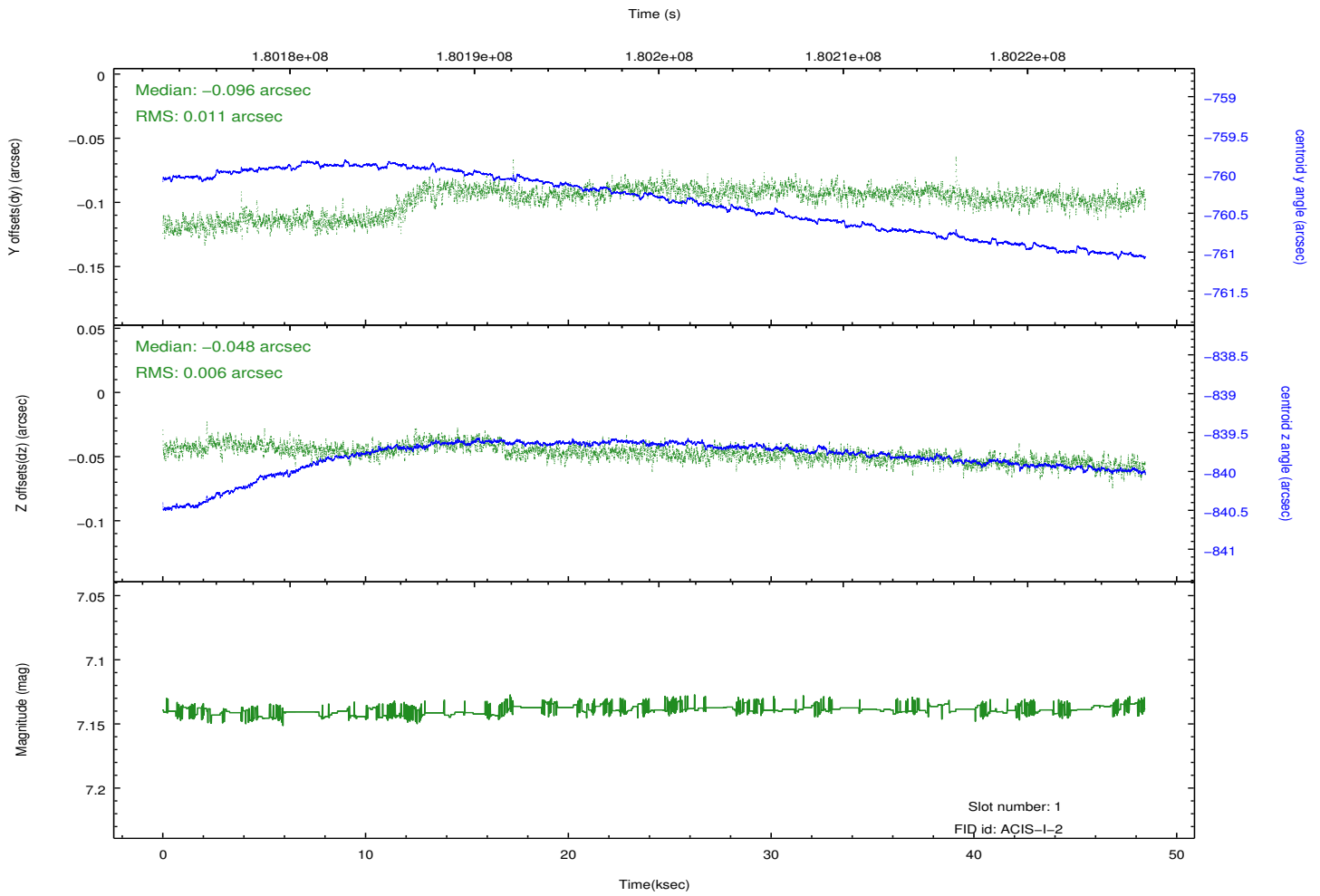
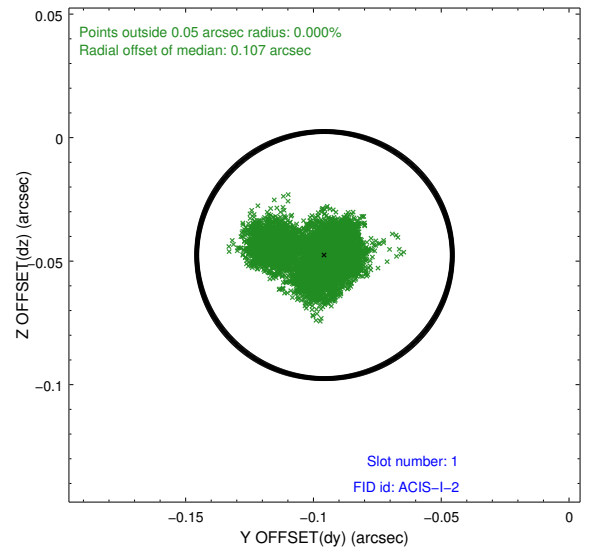
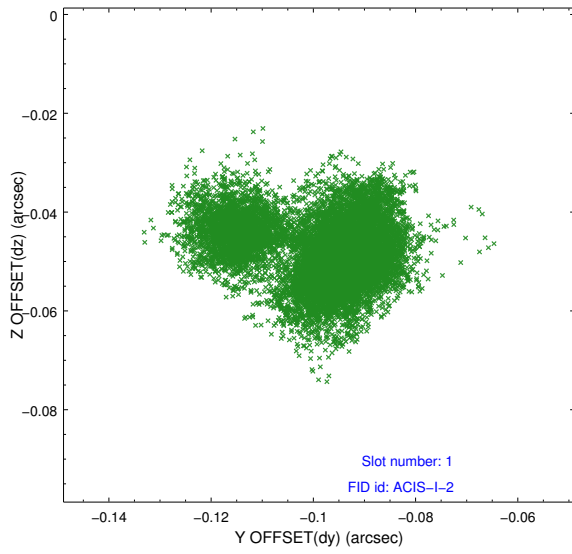


2.5 FID Slots

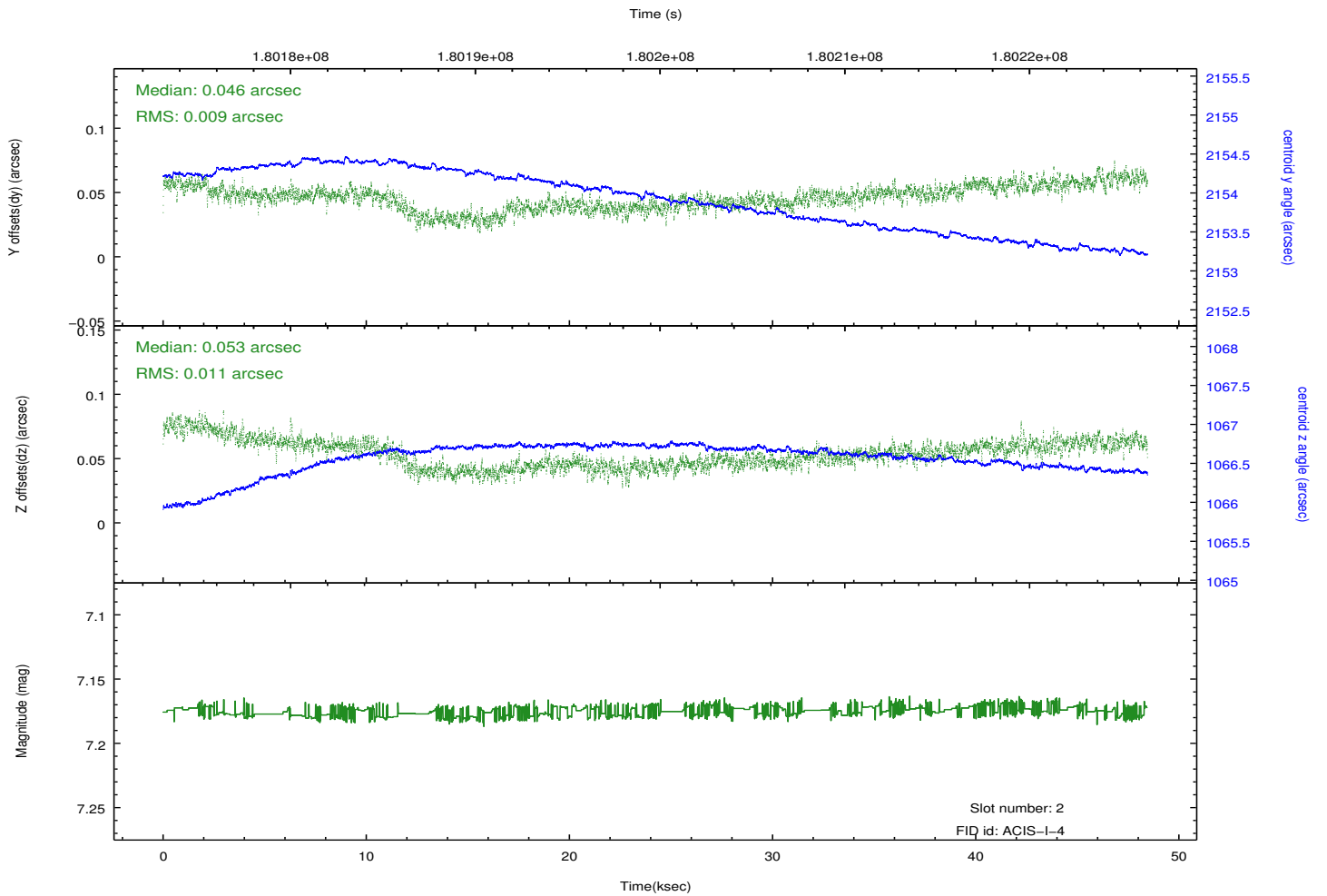
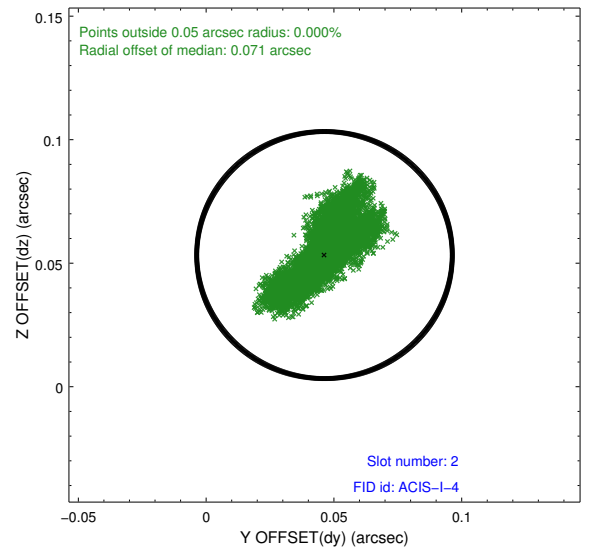
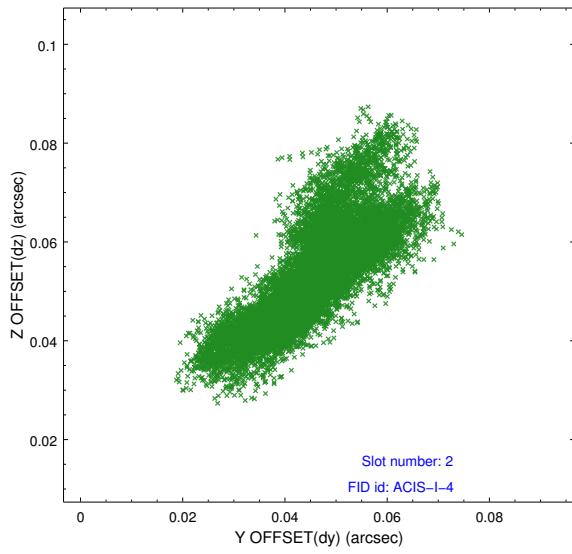
2.5.1 Slot 0



2.5.2 Slot 1



2.5.3 Slot 2



A Summary

A.1 Status

V&V Scientist	Jen Lauer
V&V Date (YYYY-MM-DD)	2012.11.29
V&V Edition	1
V&V Disposition and Status	OK
V&V Charge Time	47.938

A.2 Comments