

# V&V Reference Report

## L2 ASCDS Version : 8.4.5

Observation 4404 - L2 Version 3  
Chandra X-Ray Center

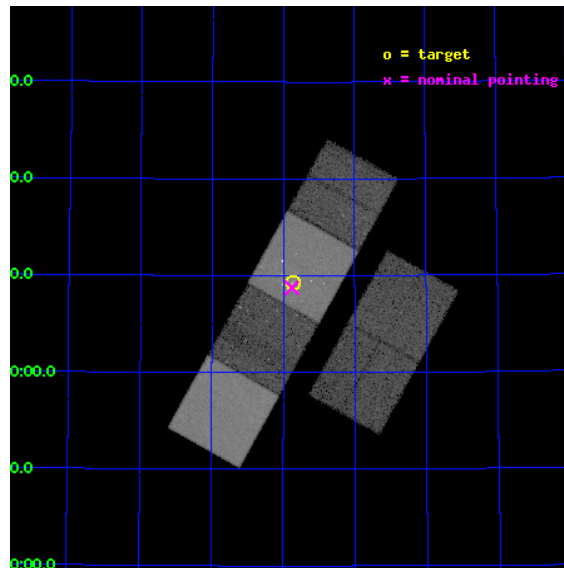
L2 Processing Date : Oct 18 2012

## Contents

<b>1</b>	<b>Front</b>	<b>2</b>
<b>2</b>	<b>OBI</b>	<b>3</b>
2.1	OBI . . . . .	3
2.1.1	Images . . . . .	3
2.1.2	Bias . . . . .	3
2.1.3	Parameters . . . . .	4
2.1.4	Events . . . . .	4
2.2	Compared Parameters . . . . .	5
2.3	Aspect . . . . .	6
2.4	Star Slots . . . . .	9
2.4.1	Slot 3 . . . . .	9
2.4.2	Slot 4 . . . . .	10
2.4.3	Slot 5 . . . . .	11
2.4.4	Slot 6 . . . . .	12
2.4.5	Slot 7 . . . . .	13
2.5	FID Slots . . . . .	14
2.5.1	Slot 0 . . . . .	14
2.5.2	Slot 1 . . . . .	15
2.5.3	Slot 2 . . . . .	16
<b>A</b>	<b>Summary</b>	<b>17</b>
A.1	Status . . . . .	17
A.2	Comments . . . . .	17

# 1 Front

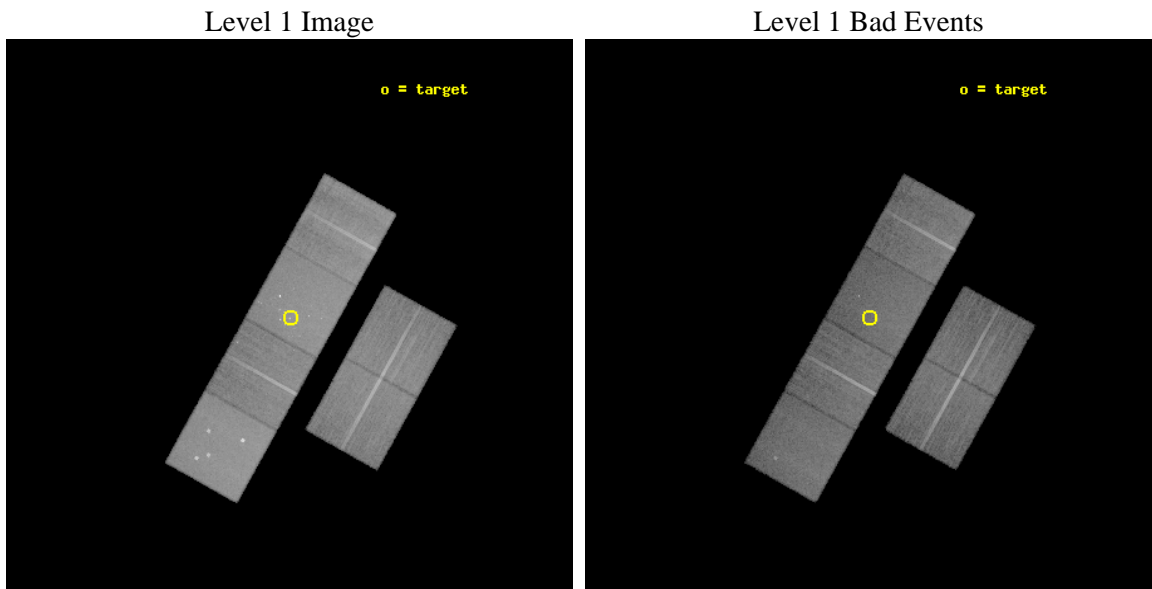
seq_num	500406	Sequence number
obs_id	4404	Observation id
title	PROMPT CHANDRA OBSERVATION OF THE TYPE II SN 2002HH	Proposal title
observer	Prof. Walter Lewin	Principal investigator
object	SN 2002HH	Source name
dtycycle	0	&#160
cycle	P	events from which exps? Prim/Second/Both
ra_targ	308.713333	Observer's specified target RA [deg]
dec_targ	60.154861	Observer's specified target Dec [deg]
ra_nom	308.71966563339	Nominal RA [deg]
dec_nom	60.145729890651	Nominal Dec [deg]
roll_nom	299.18057658236	Nominal Roll [deg]
revision	3	Processing version of data
ontime	30335.99988699	Sum of GTIs [s]
livetime	29951.867190274	Livetime [s]
ontime2	30335.99988699	Sum of GTIs [s]
ontime3	30329.517966509	Sum of GTIs [s]
ontime5	30335.99988699	Sum of GTIs [s]
ontime6	30335.99988699	Sum of GTIs [s]
ontime7	30335.99988699	Sum of GTIs [s]
ontime8	30332.759016395	Sum of GTIs [s]
l2events	317078	Number of level 2 events



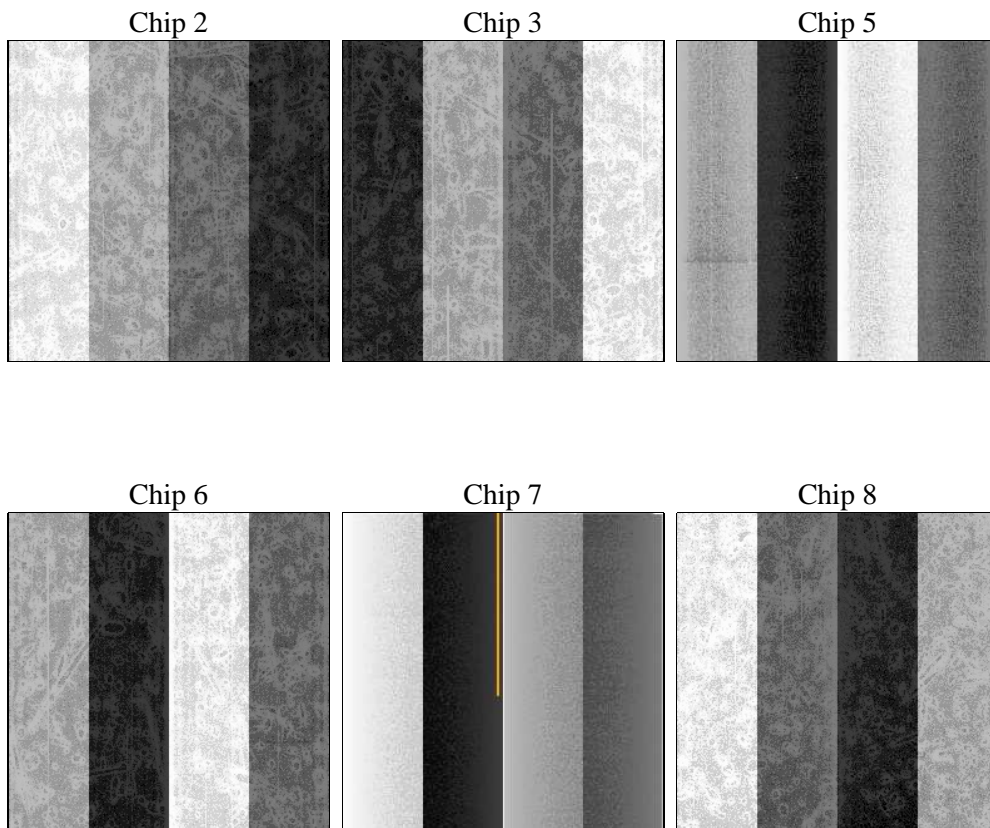
## 2 OBI

### 2.1 OBI

#### 2.1.1 Images



#### 2.1.2 Bias



### 2.1.3 Parameters

obi_num	0	Obi number	sched_exp_time	30200.000000	[s] Scheduled observation exposure time
ascdsver	8.4.5	Processing system revision	ontime	30335.99988699	Sum of GTIs [s]
caldbver	4.5.2	&#160	ontime2	30335.99988699	Sum of GTIs [s]
date	2012-10-18T04:30:21	Date and time of file creation	ontime3	30329.517966509	Sum of GTIs [s]
revision	3	Processing version of data	ontime5	30335.99988699	Sum of GTIs [s]
			ontime6	30335.99988699	Sum of GTIs [s]
			ontime7	30335.99988699	Sum of GTIs [s]
			ontime8	30332.759016395	Sum of GTIs [s]
			l1events	1381539	Number of level 1 events

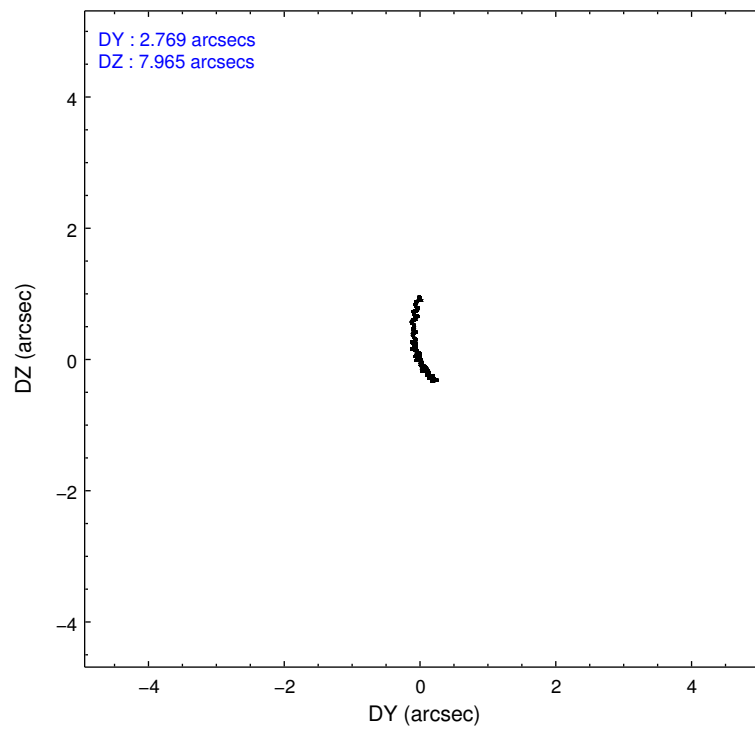
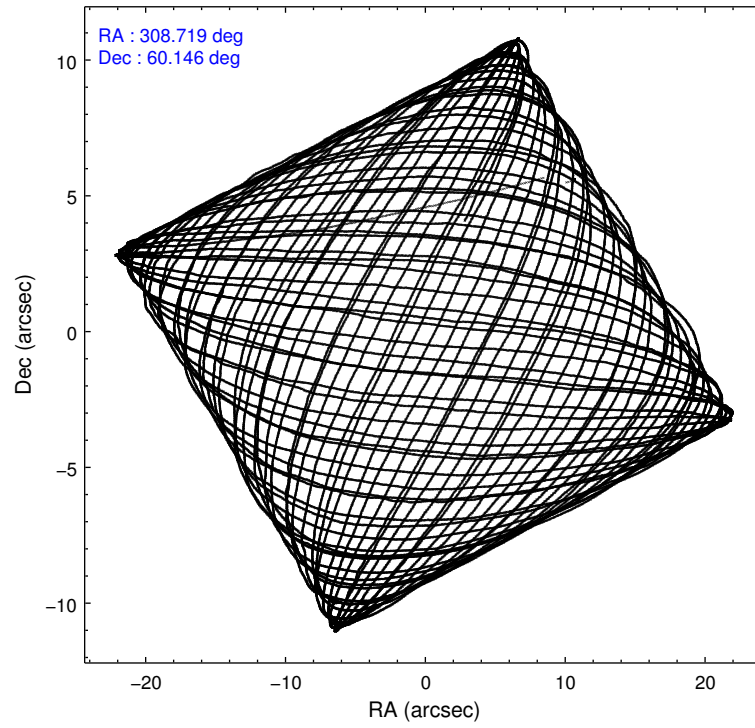
### 2.1.4 Events

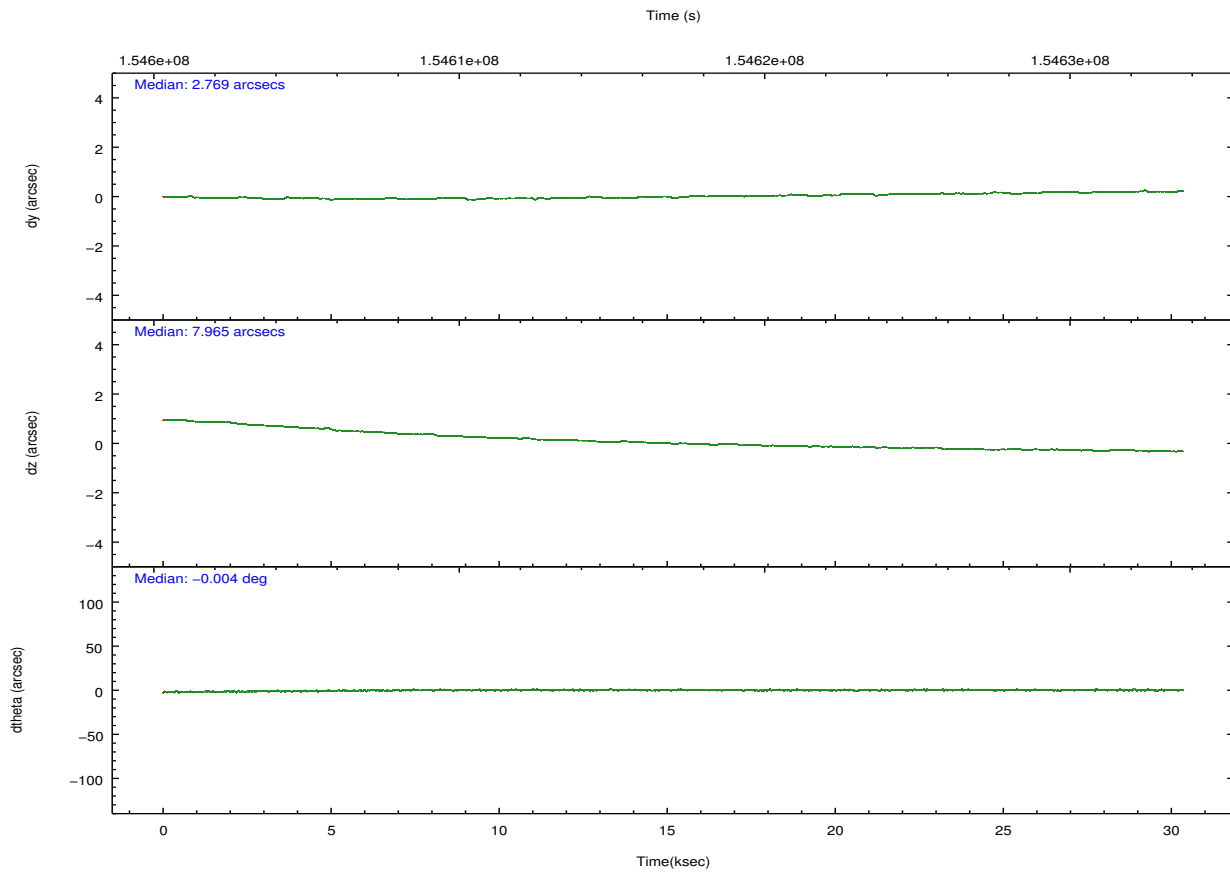
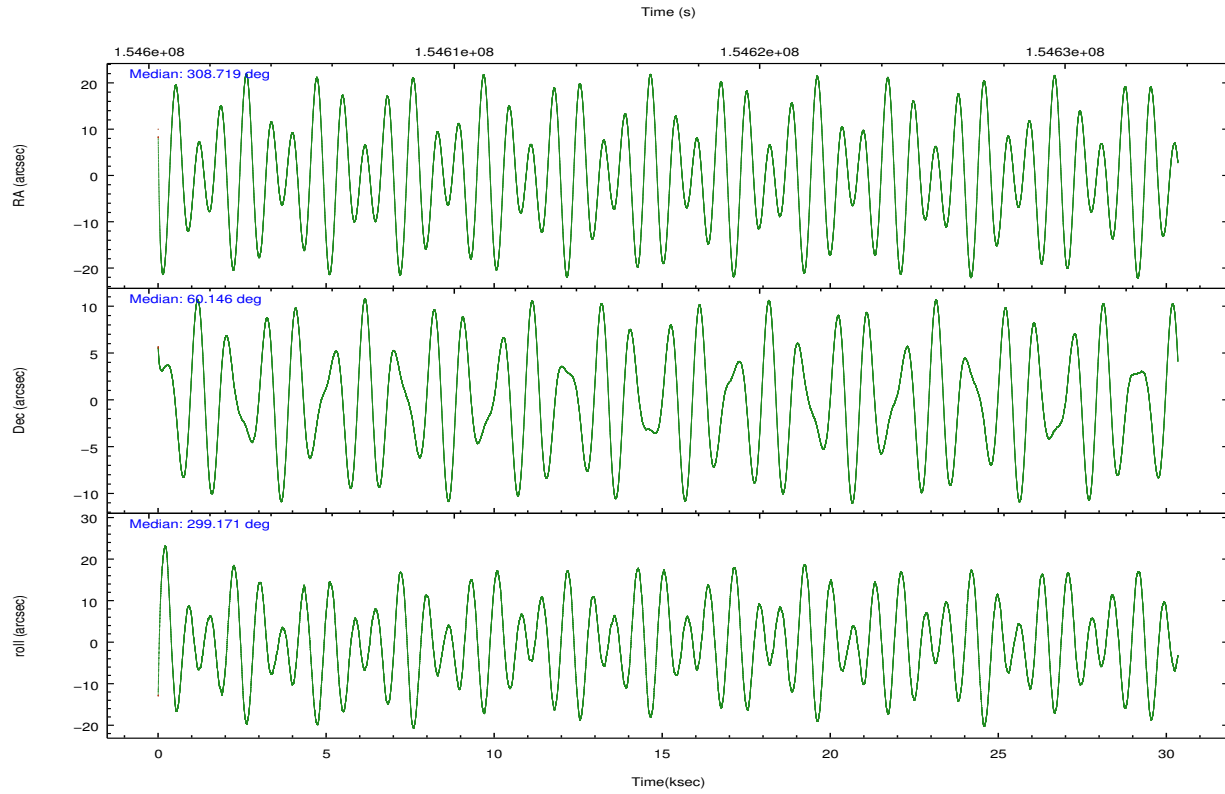
	ccd 2	ccd 3	ccd 5	ccd 6	ccd 7	ccd 8		ccd 2	ccd 3	ccd 5	ccd 6	ccd 7	ccd 8
level 1 events	195157	189707	286469	193856	266854	249496	grade 0 events	10816	10021	18436	10536	13413	20245
rejected events	171488	166747	153985	169047	150146	189703		5%	5%	6%	5%	5%	8%
rejected %	87%	87%	53%	87%	56%	76%	grade 1 events	127	118	357	82	290	207
								0%	0%	0%	0%	0%	0%
							grade 2 events	4822	4751	38445	5478	24509	11937
								2%	2%	13%	2%	9%	4%
							grade 3 events	2131	2201	5560	2201	11042	7375
								1%	1%	1%	1%	4%	2%
							grade 4 events	2168	2178	5334	2243	10933	6803
								1%	1%	1%	1%	4%	2%
							grade 5 events	7379	8167	20783	8621	24429	11133
								3%	4%	7%	4%	9%	4%
							grade 6 events	4124	4192	66993	4773	58693	14301
								2%	2%	23%	2%	21%	5%
							grade 7 events	163590	158079	130561	159922	123545	177495
								83%	83%	45%	82%	46%	71%

## 2.2 Compared Parameters

Parameter	Planned	Actual	Parameter	Planned	Actual
Instrument	ACIS	ACIS	Obspar format version number	7	7
Detector	ACIS-235678	ACIS-235678	Obspar file type	PREDICTED	ACTUAL
Grating	NONE	NONE	Obspar update status	NONE	UPDATED
Data mode	FAINT	FAINT	Number of optional ACIS chips dropped	0	0
Observation mode	POINTING	POINTING	On-chip summing requested	N	N
[deg] Pointing RA	308.672307	308.7196656333879	Subarray requested	NONE	NONE
[deg] Pointing Dec	60.159348	60.14572989065108	Alternating exposures requested	N	N
[deg] Pointing Roll	299.065023	299.1805765823623	[s] Primary exposure time	0.000000	3.2
[mm] SIM focus pos	-0.684267	-0.6828225247311905			
[mm] SIM defocus	0	0.001444936568705701			
[mm] SIM translation stage pos	-190.132523	-190.1425803651734			
[mm] SIM translation stage offset	0	0.01005778216563158			
[s] Observation start time (MET)	154601970.184000	154600662.91018			
Observation start date	2002-11-25T08:58:26	2002-11-25T08:37:42			
[s] Observation end time (MET)	154632170.184000	154632929.39903			
Observation end date	2002-11-25T17:21:46	2002-11-25T17:35:29			
Read mode	TIMED	TIMED			

## 2.3 Aspect



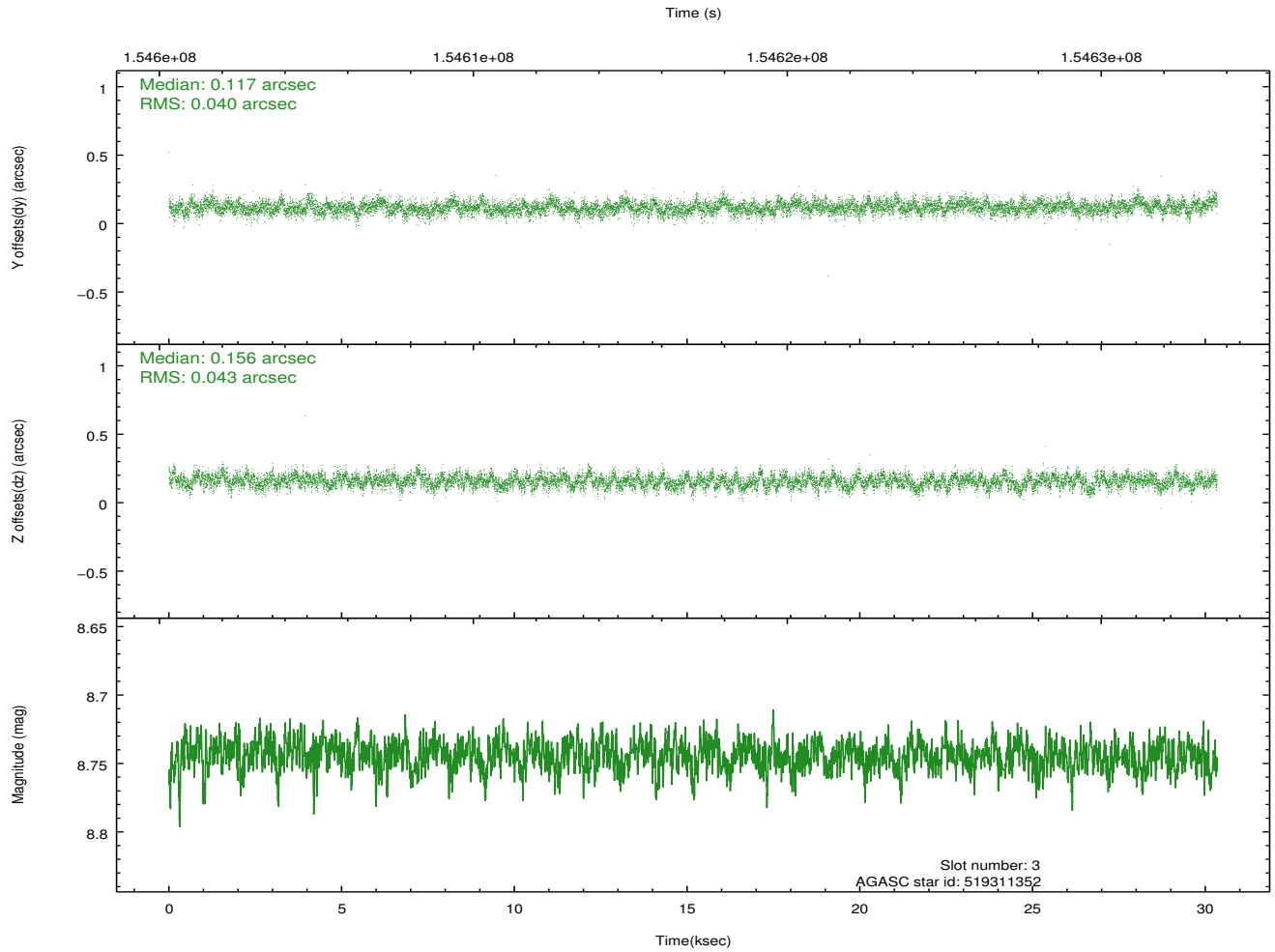
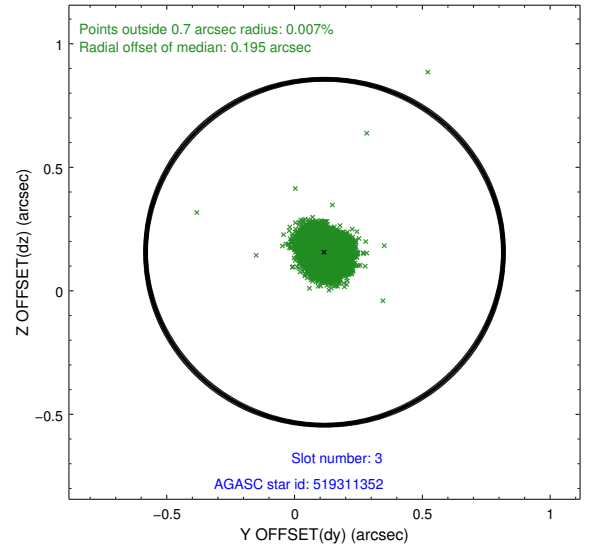
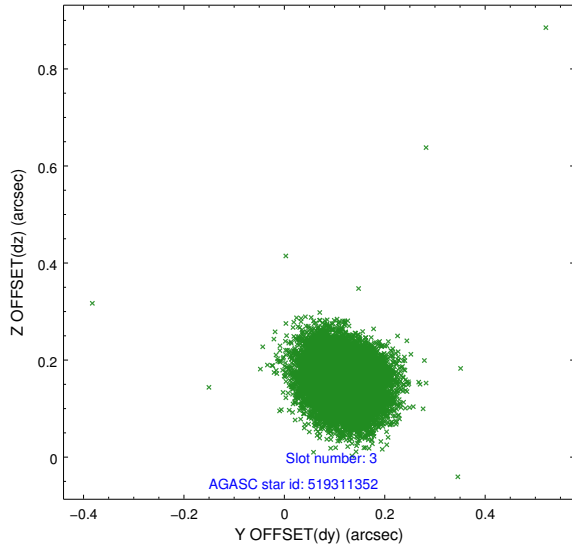


### Slot Statistics

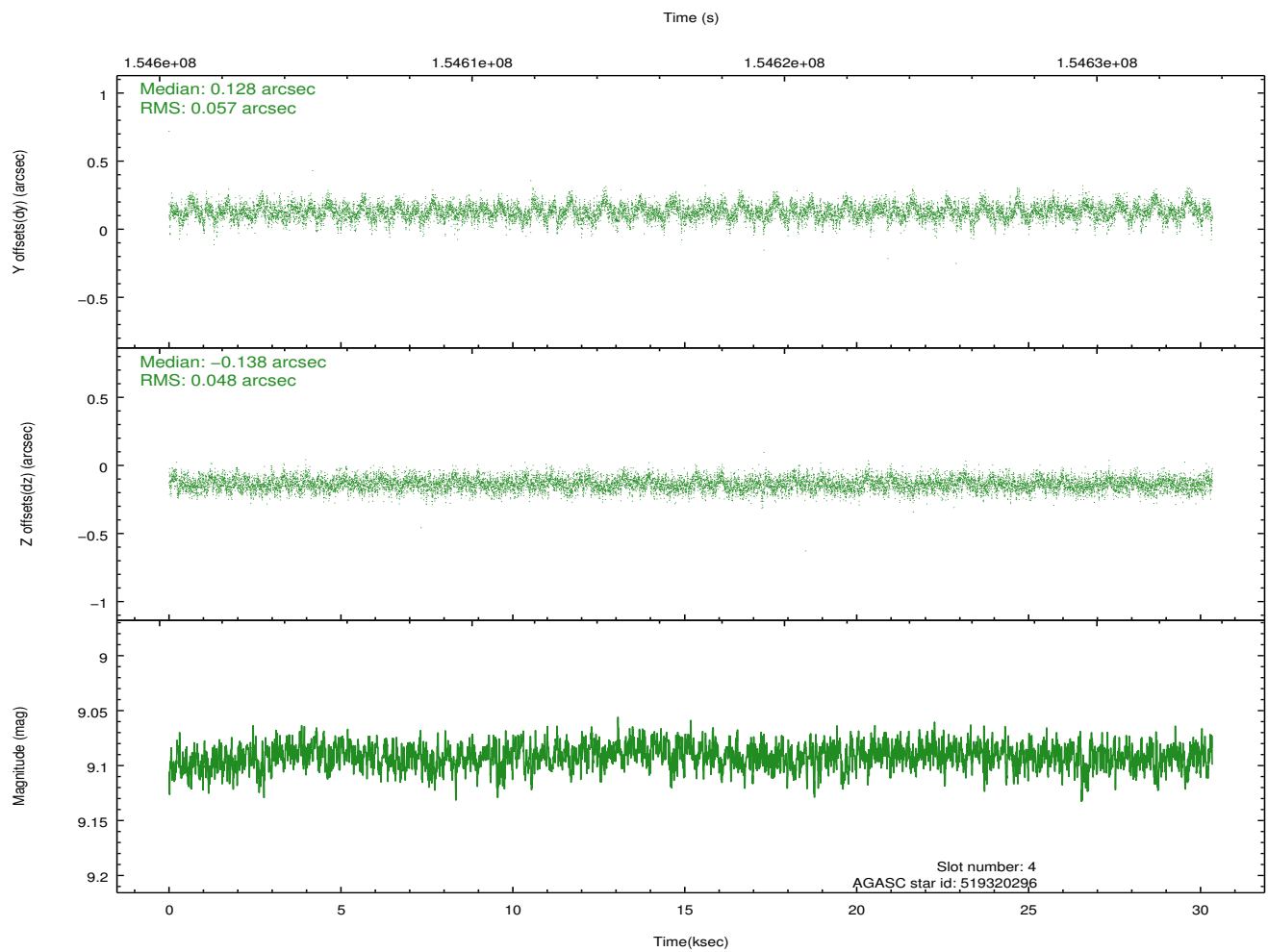
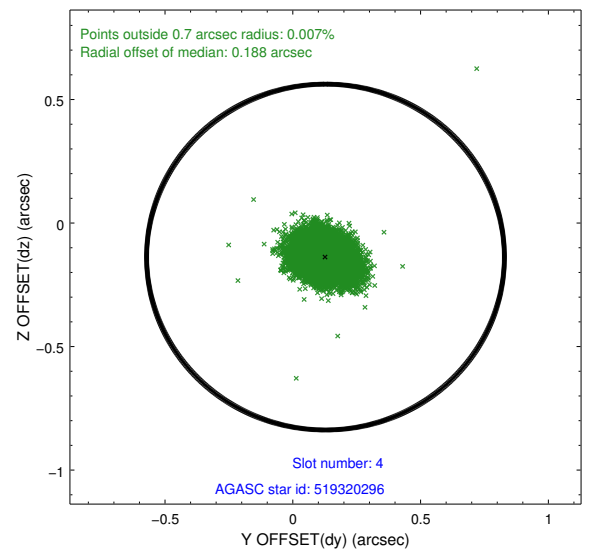
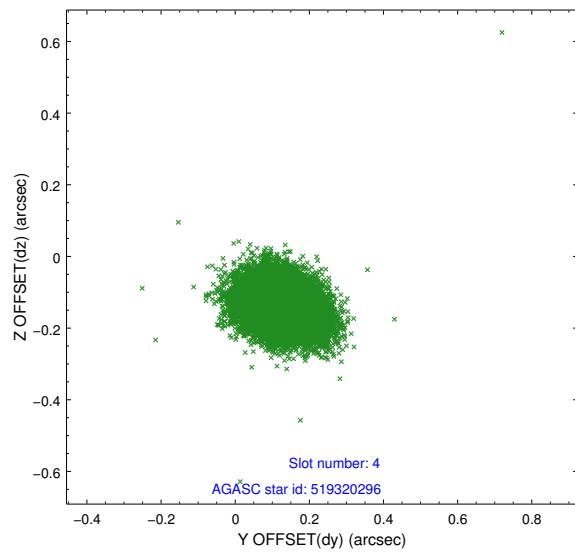
slot	status	id	mag	n_pts	med_dy	med_dz	dr1	dr2	ra	dec	mean_y	mean_z
0	FID	ACIS-S-1	7.19	7401	0.042	-0.013	0.019	0.044	0.000000	0.000000	940.61	-1724.88
1	FID	ACIS-S-4	7.20	7400	-0.035	-0.008	0.014	0.022	0.000000	0.000000	2158.01	179.18
2	FID	ACIS-S-5	7.24	7398	-0.033	0.033	0.013	0.024	0.000000	0.000000	-1808.21	172.96
3	GUIDE	519311352	8.74	14794	0.117	0.156	0.062	0.100	309.050952	59.661888	1899.27	-266.38
4	GUIDE	519320296	9.09	14798	0.128	-0.138	0.078	0.130	308.366901	59.489372	1837.49	-1658.51
5	GUIDE	554839376	7.42	14802	-0.159	0.109	0.071	0.114	308.018563	60.422364	-1395.70	-552.61
6	GUIDE	554838576	9.31	14798	-0.096	-0.074	0.095	0.151	307.625324	60.310495	-1394.38	-1360.20
7	GUIDE	556537192	9.20	14794	0.004	-0.056	0.112	0.179	309.975880	60.344309	526.41	2364.35

## 2.4 Star Slots

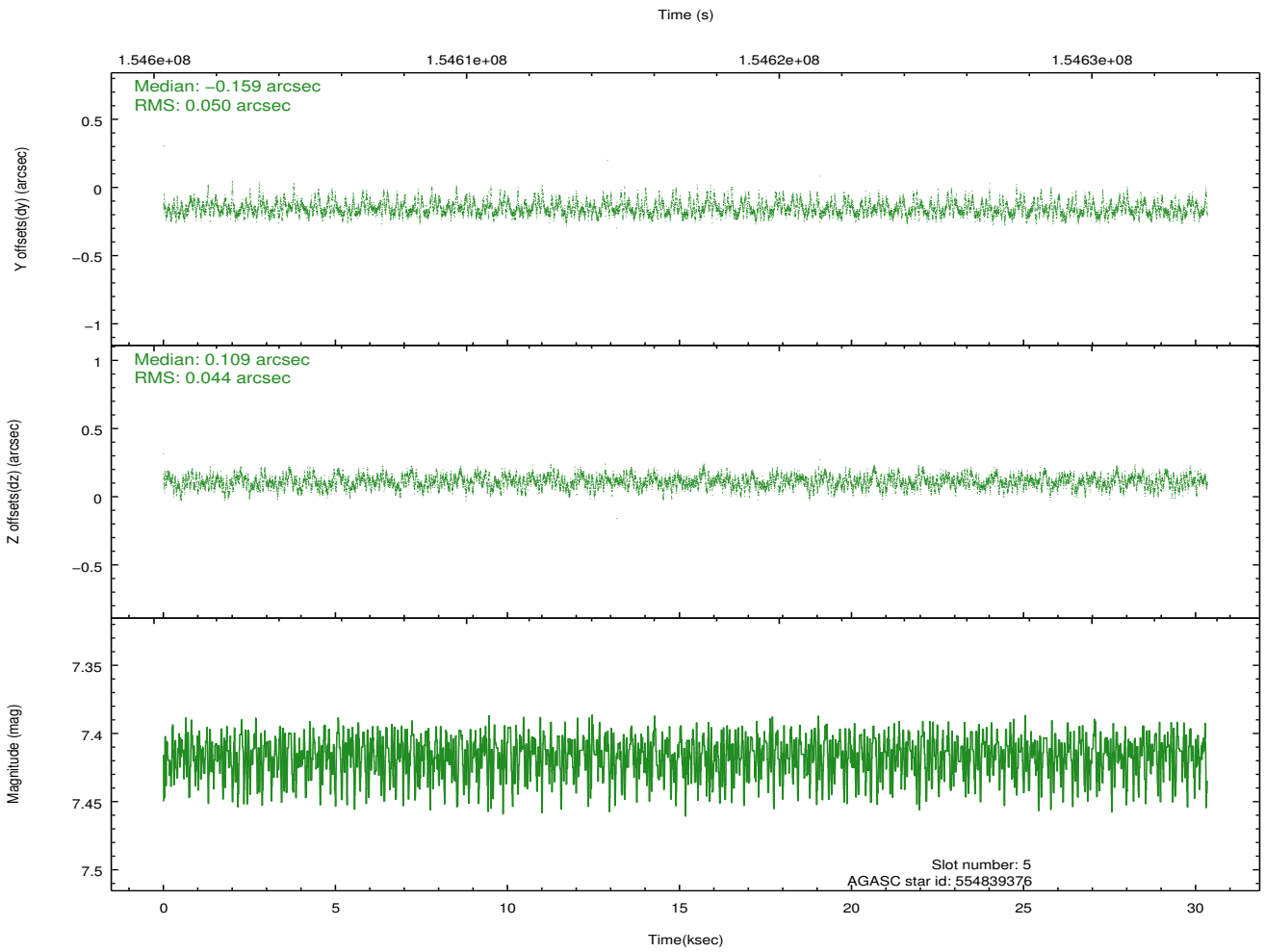
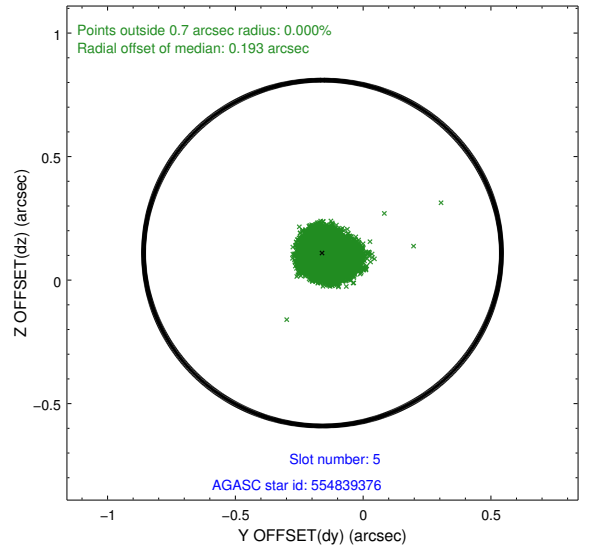
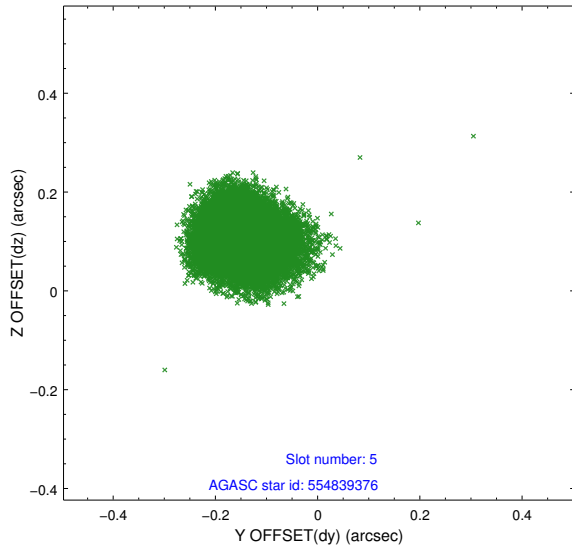
### 2.4.1 Slot 3



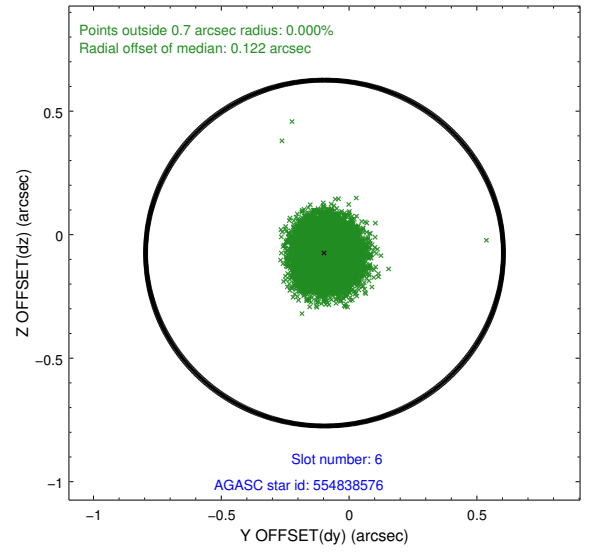
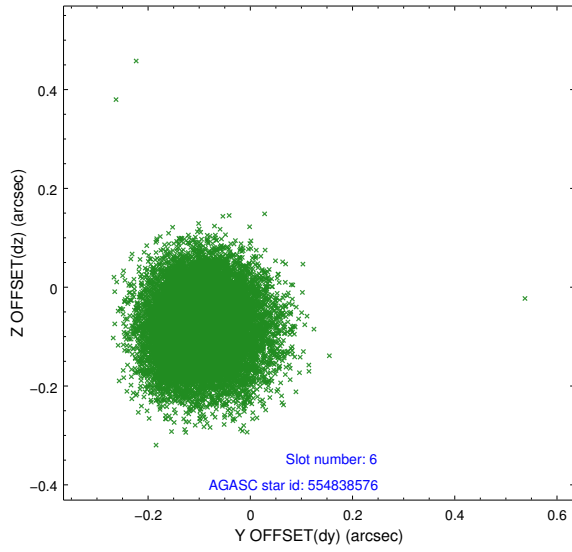
## 2.4.2 Slot 4



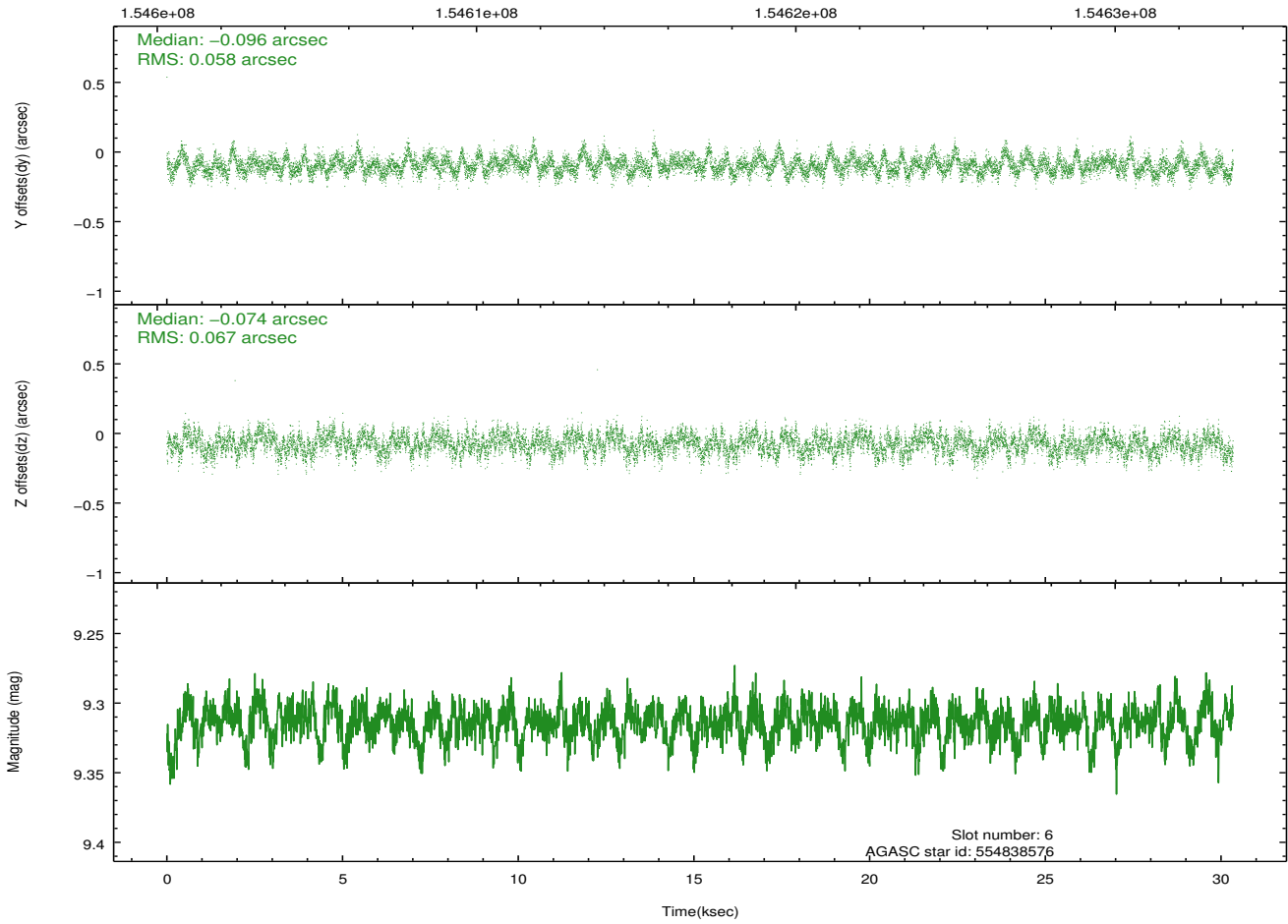
### 2.4.3 Slot 5



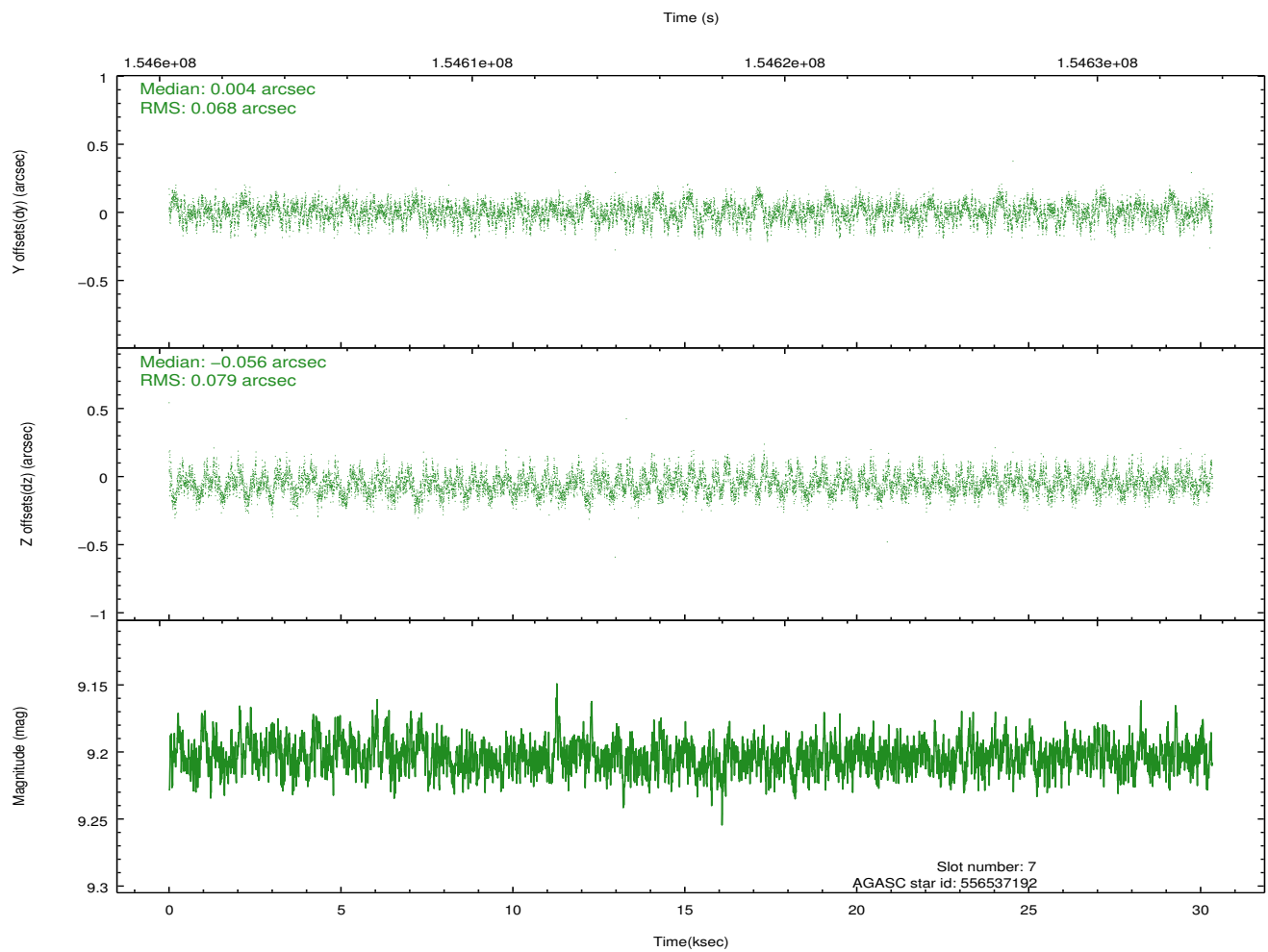
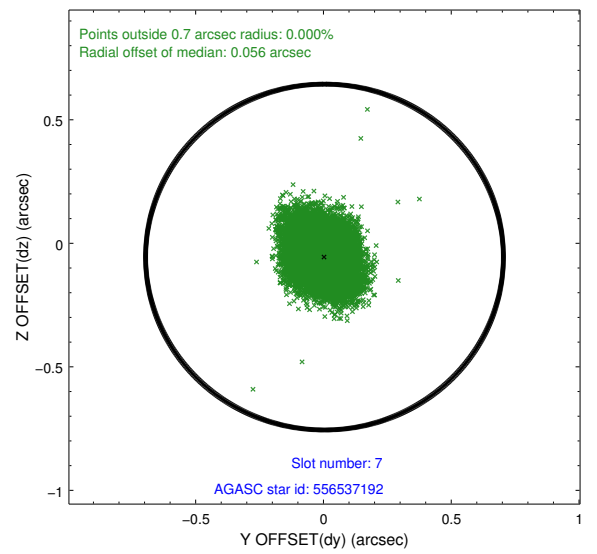
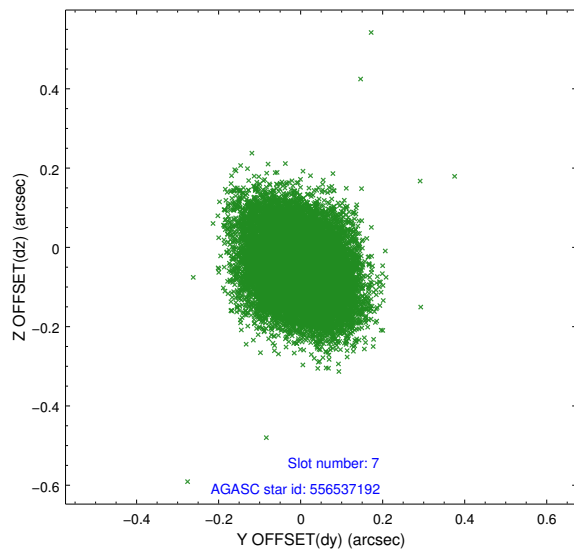
### 2.4.4 Slot 6



Time (s)

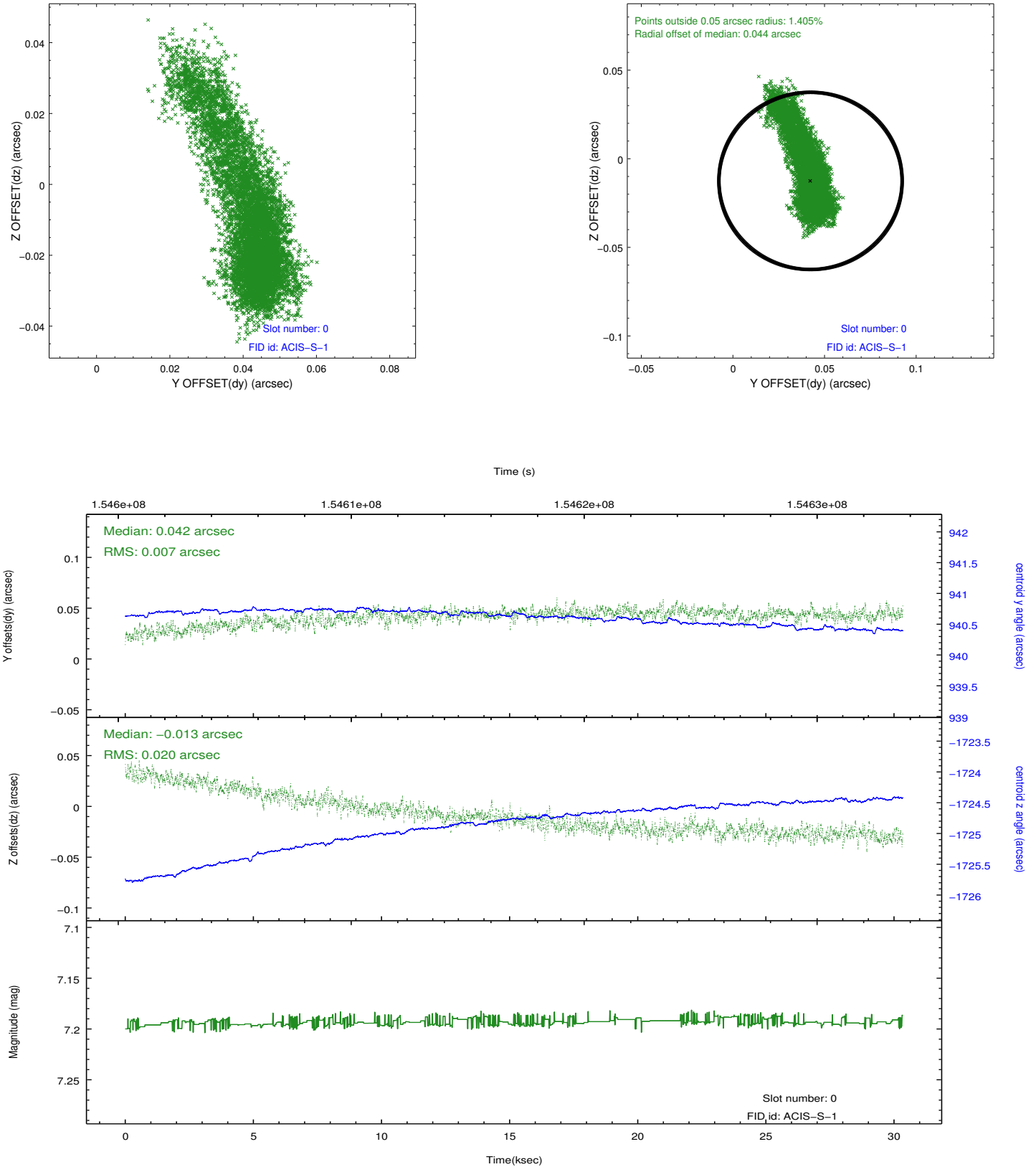


## 2.4.5 Slot 7

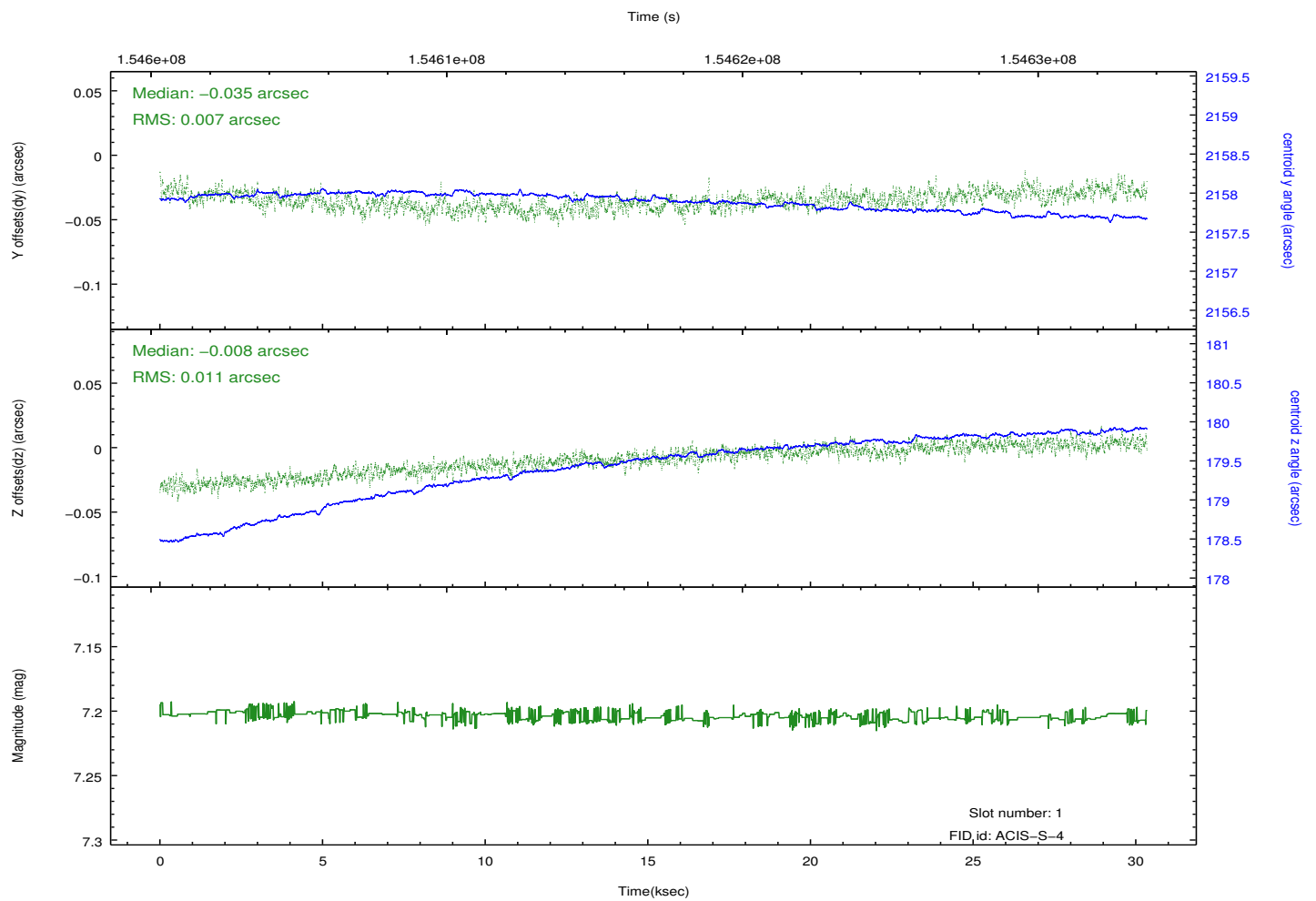
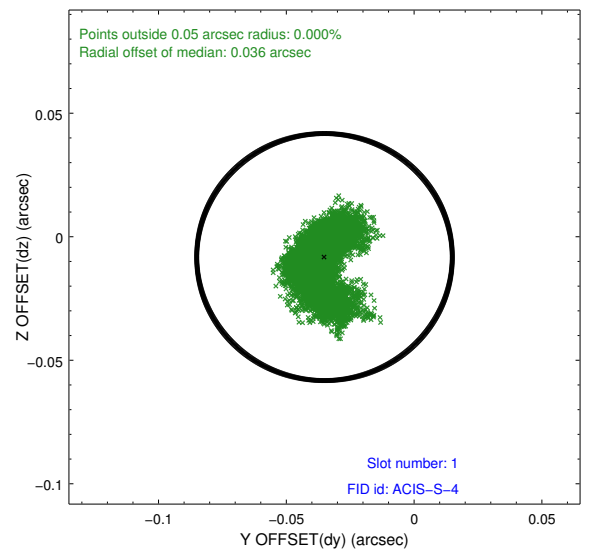
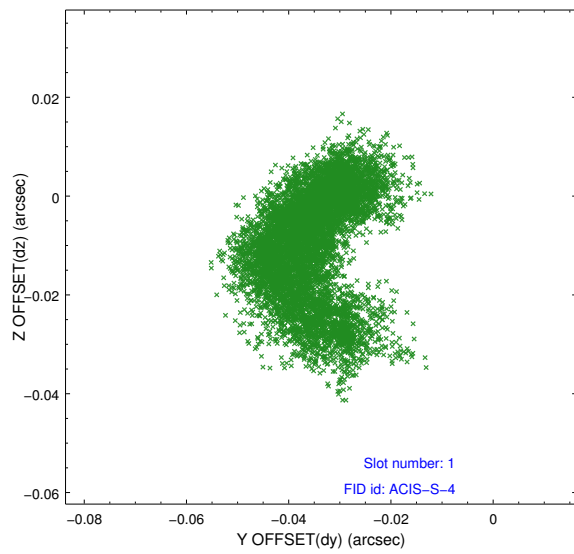


## 2.5 FID Slots

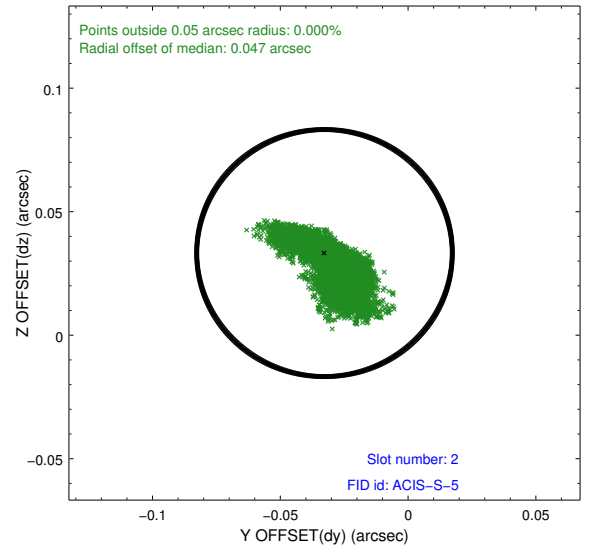
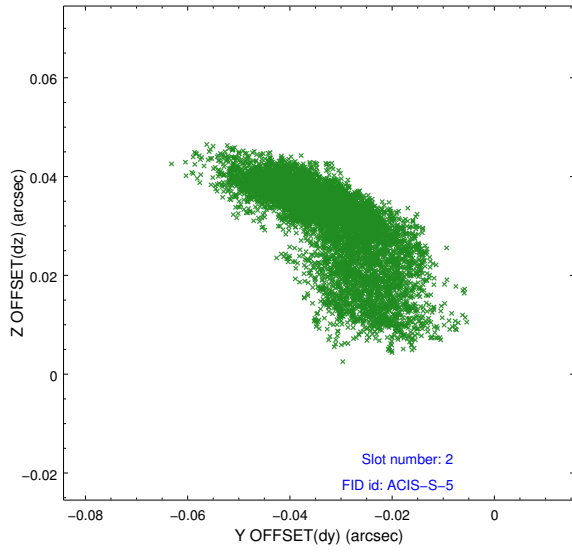
### 2.5.1 Slot 0



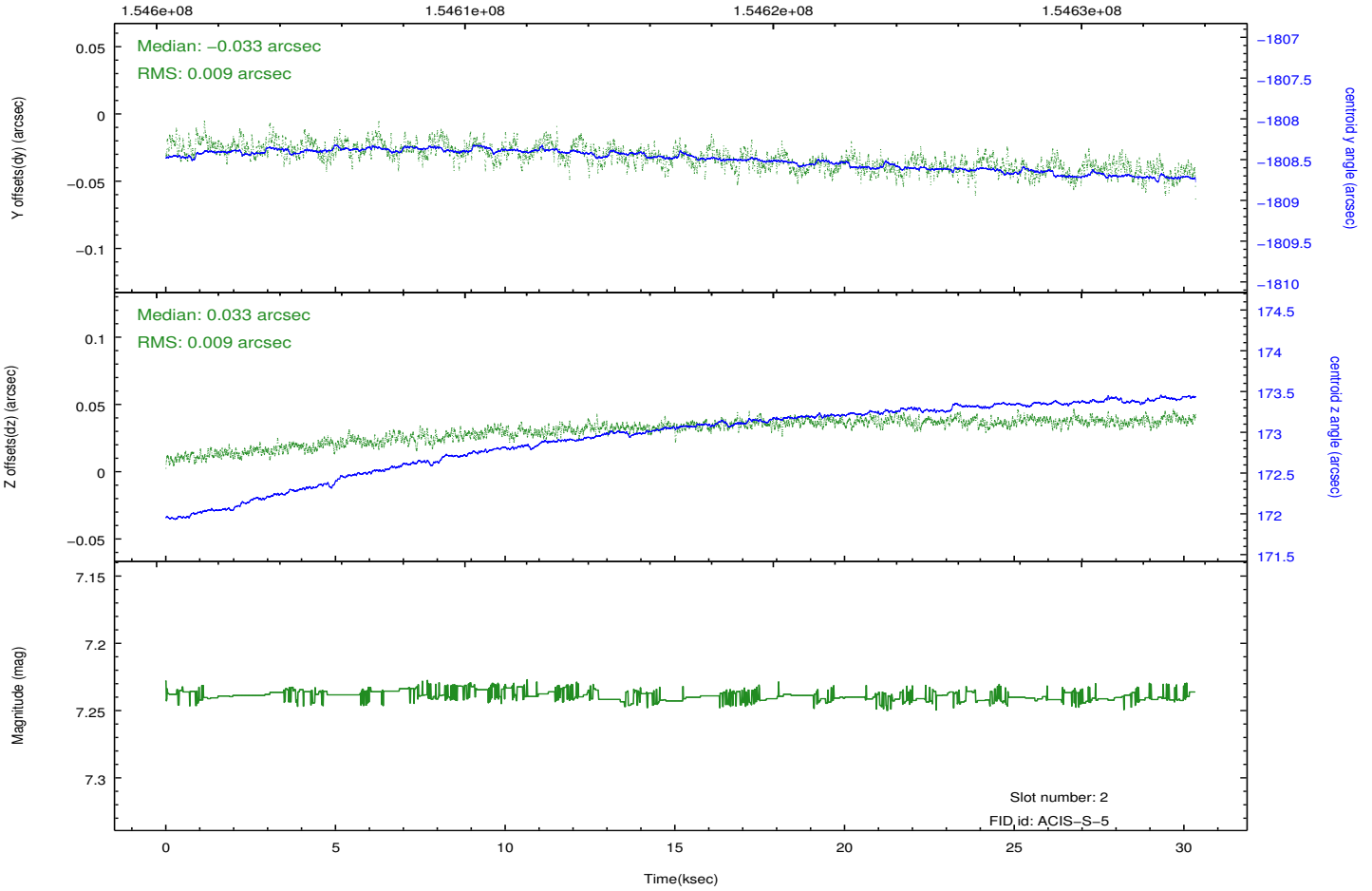
## 2.5.2 Slot 1



### 2.5.3 Slot 2



Time (s)



# A Summary

## A.1 Status

V&V Scientist	Jen Lauer
V&V Date (YYYY-MM-DD)	2012.10.28
V&V Edition	1
V&V Disposition and Status	OK
V&V Charge Time	30.335

## A.2 Comments