

V&V Reference Report

L2 ASCDS Version : 8.4.5

Observation 4434 - L2 Version 3
Chandra X-Ray Center

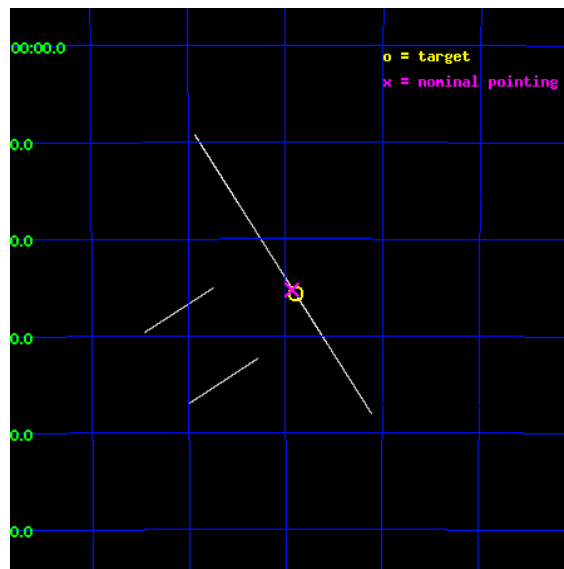
L2 Processing Date : Oct 26 2012

Contents

1	Front	2
2	OBI	3
2.1	OBI	3
2.1.1	Images	3
2.1.2	Bias	3
2.1.3	Parameters	4
2.1.4	Events	4
2.2	Compared Parameters	5
2.3	Aspect	6
2.4	Star Slots	9
2.4.1	Slot 3	9
2.4.2	Slot 4	10
2.4.3	Slot 5	11
2.4.4	Slot 6	12
2.4.5	Slot 7	13
2.5	FID Slots	14
2.5.1	Slot 0	14
2.5.2	Slot 1	15
2.5.3	Slot 2	16
A	Summary	17
A.1	Status	17
A.2	Comments	17

1 Front

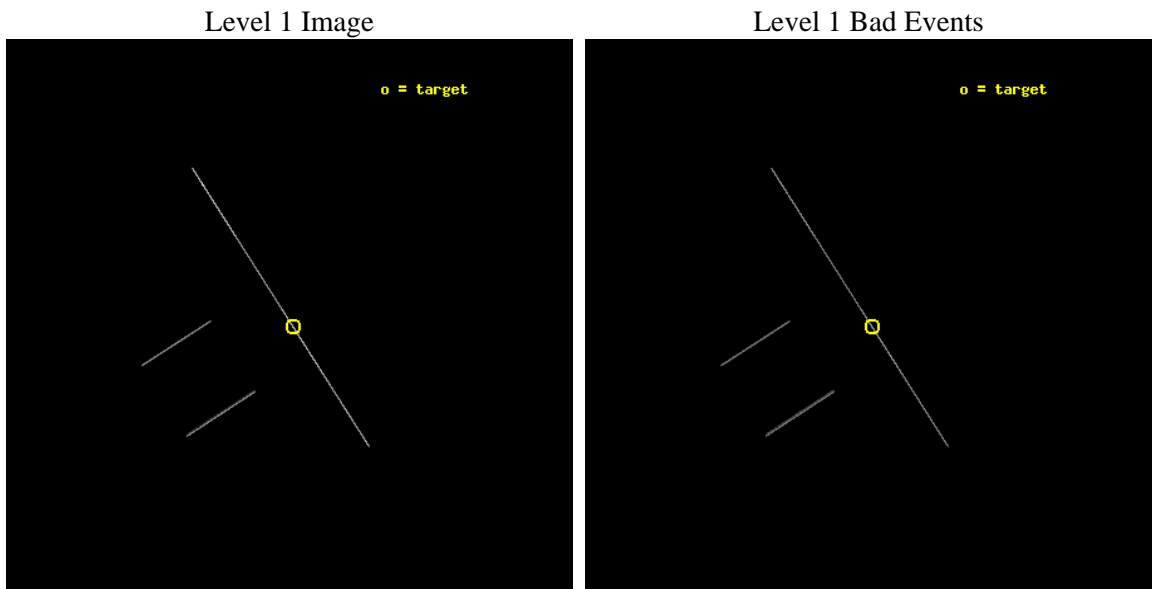
seq_num	400323	Sequence number
obs_id	4434	Observation id
title	Determining the Nature of the Peculiar X-ray Transient IGR J16358-4726	Proposal title
observer	Dr. CHRYSSA KOUVELIOTOU	Principal investigator
object	IGR J16358-4726	Source name
ra_targ	248.974167	Observer's specified target RA [deg]
dec_targ	-47.428083	Observer's specified target Dec [deg]
ra_nom	248.9838630807	Nominal RA [deg]
dec_nom	-47.421000261028	Nominal Dec [deg]
roll_nom	57.251211763672	Nominal Roll [deg]
revision	3	Processing version of data
ontime	47056.949812233	Sum of GTIs [s]
livetime	46873.133602029	Livetime [s]
ontime2	47056.953934073	Sum of GTIs [s]
ontime3	47055.484277099	Sum of GTIs [s]
ontime5	47055.491097003	Sum of GTIs [s]
ontime6	47056.949481755	Sum of GTIs [s]
ontime7	47056.949812233	Sum of GTIs [s]
ontime8	47056.949490219	Sum of GTIs [s]
l2events	535617	Number of level 2 events



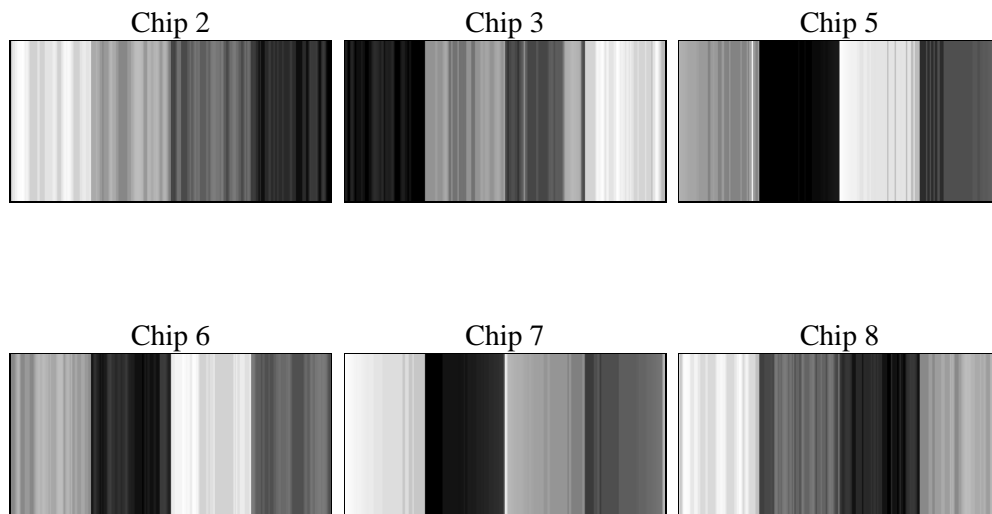
2 OBI

2.1 OBI

2.1.1 Images



2.1.2 Bias



2.1.3 Parameters

obi_num	1	Obi number	sched_exp_time	47000.000000	[s] Scheduled observation exposure time
ascdsver	8.4.5	Processing system revision	ontime	47056.949812233	Sum of GTIs [s]
caldbver	4.5.2	 	ontime2	47056.953934073	Sum of GTIs [s]
date	2012-10-26T20:16:31	Date and time of file creation	ontime3	47055.484277099	Sum of GTIs [s]
revision	3	Processing version of data	ontime5	47055.491097003	Sum of GTIs [s]
			ontime6	47056.949481755	Sum of GTIs [s]
			ontime7	47056.949812233	Sum of GTIs [s]
			ontime8	47056.949490219	Sum of GTIs [s]
			l1events	845317	Number of level 1 events

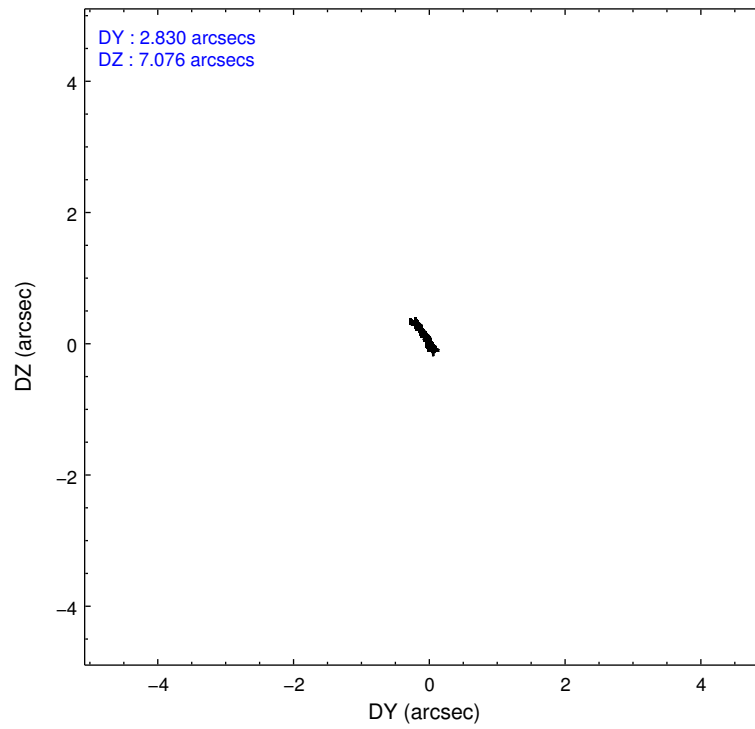
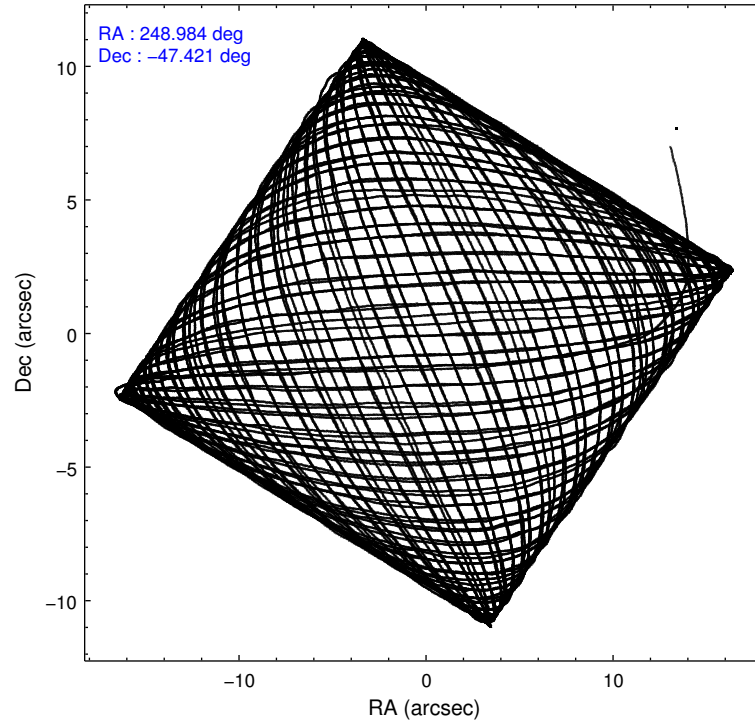
2.1.4 Events

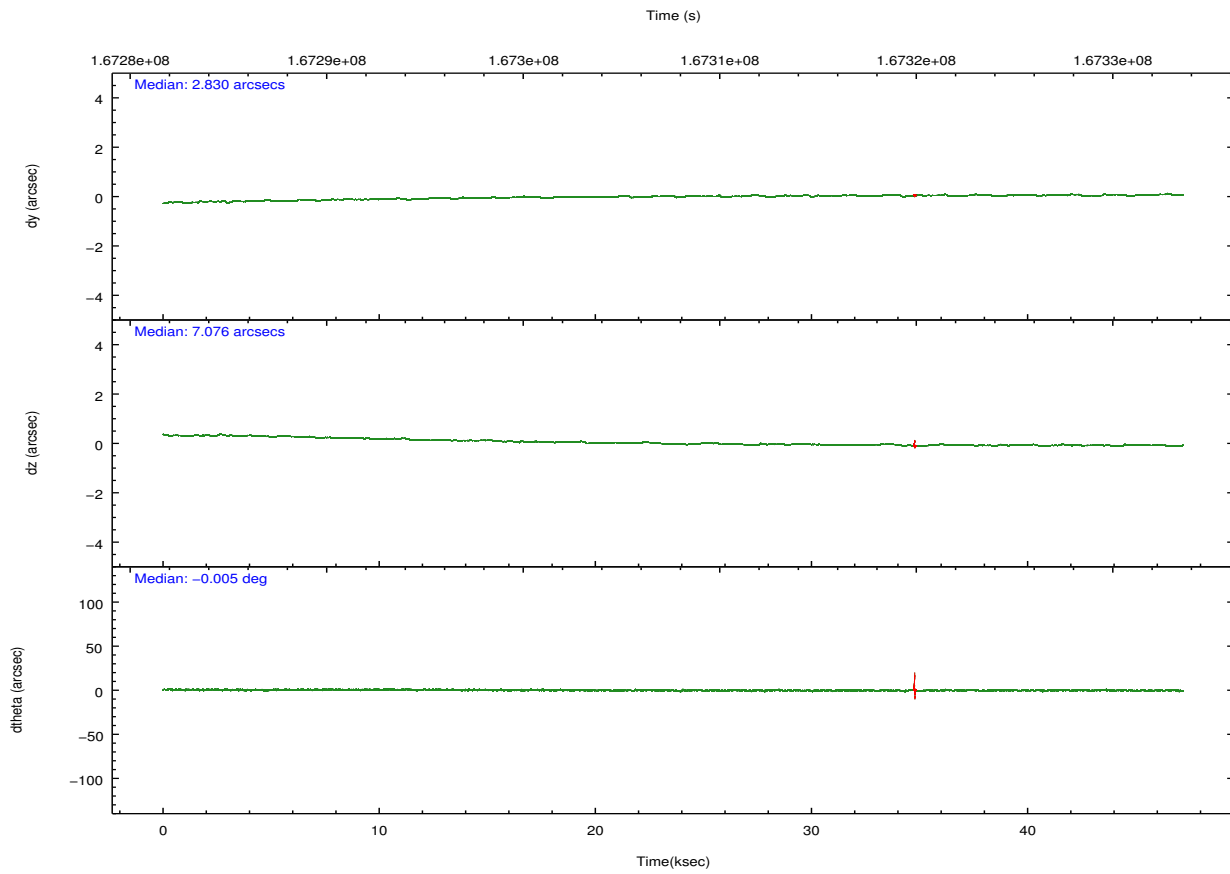
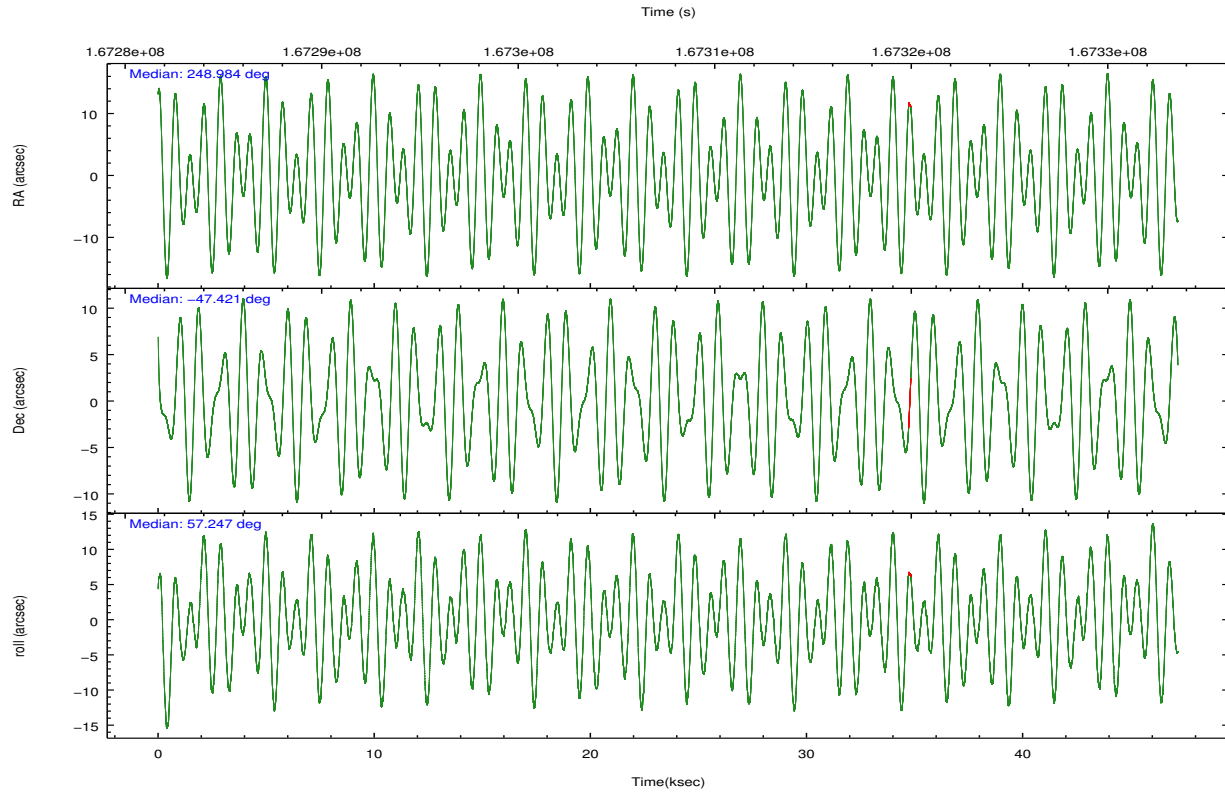
	ccd 2	ccd 3	ccd 5	ccd 6	ccd 7	ccd 8		ccd 2	ccd 3	ccd 5	ccd 6	ccd 7	ccd 8
level 1 events	60260	66727	319087	69190	201359	128694	grade 0 events	7426	7806	89620	7302	16014	21081
rejected events	11385	12941	32320	13243	36268	18751		12%	11%	28%	10%	7%	16%
rejected %	18%	19%	10%	19%	18%	14%	grade 1 events	182	247	415	192	450	408
								0%	0%	0%	0%	0%	0%
							grade 2 events	19083	21160	76656	22826	41198	36592
								31%	31%	24%	32%	20%	28%
							grade 3 events	6407	7817	6117	6877	12789	12522
								10%	11%	1%	9%	6%	9%
							grade 4 events	6604	6732	5809	6638	12757	12376
								10%	10%	1%	9%	6%	9%
							grade 5 events	10351	11721	27267	12131	33094	16607
								17%	17%	8%	17%	16%	12%
							grade 6 events	10207	11244	113203	13224	85057	29108
								16%	16%	35%	19%	42%	22%
							grade 7 events	0	0	0	0	0	0
								0%	0%	0%	0%	0%	0%

2.2 Compared Parameters

Parameter	Planned	Actual	Parameter	Planned	Actual
Instrument	ACIS	ACIS	Obspar format version number	7	7
Detector	ACIS-235678	ACIS-235678	Obspar file type	PREDICTED	ACTUAL
Grating	NONE	NONE	Obspar update status	NONE	UPDATED
Data mode	CC33_FAINT	CC33_FAINT	Number of optional ACIS chips dropped	0	0
Observation mode	POINTING	POINTING	On-chip summing requested	N	N
[deg] Pointing RA	248.982508	248.9838630806971	Subarray requested	NONE	NONE
[deg] Pointing Dec	-47.448210	-47.42100026102777	Alternating exposures requested	N	N
[deg] Pointing Roll	57.093584	57.25121176367187	[s] Primary exposure time	0.000000	0
[mm] SIM focus pos	-0.684267	-0.6828225247311905			
[mm] SIM defocus	0	0.001444936568705701			
[mm] SIM translation stage pos	-190.132523	-190.1400660498719			
[mm] SIM translation stage offset	0	0.00754346686406393			
[s] Observation start time (MET)	167284219.184000	167283222.65486			
Observation start date	2003-04-21T03:49:15	2003-04-21T03:33:42			
[s] Observation end time (MET)	167331219.184000	167331688.75691			
Observation end date	2003-04-21T16:52:35	2003-04-21T17:01:28			
Read mode	CONTINUOUS	CONTINUOUS			

2.3 Aspect



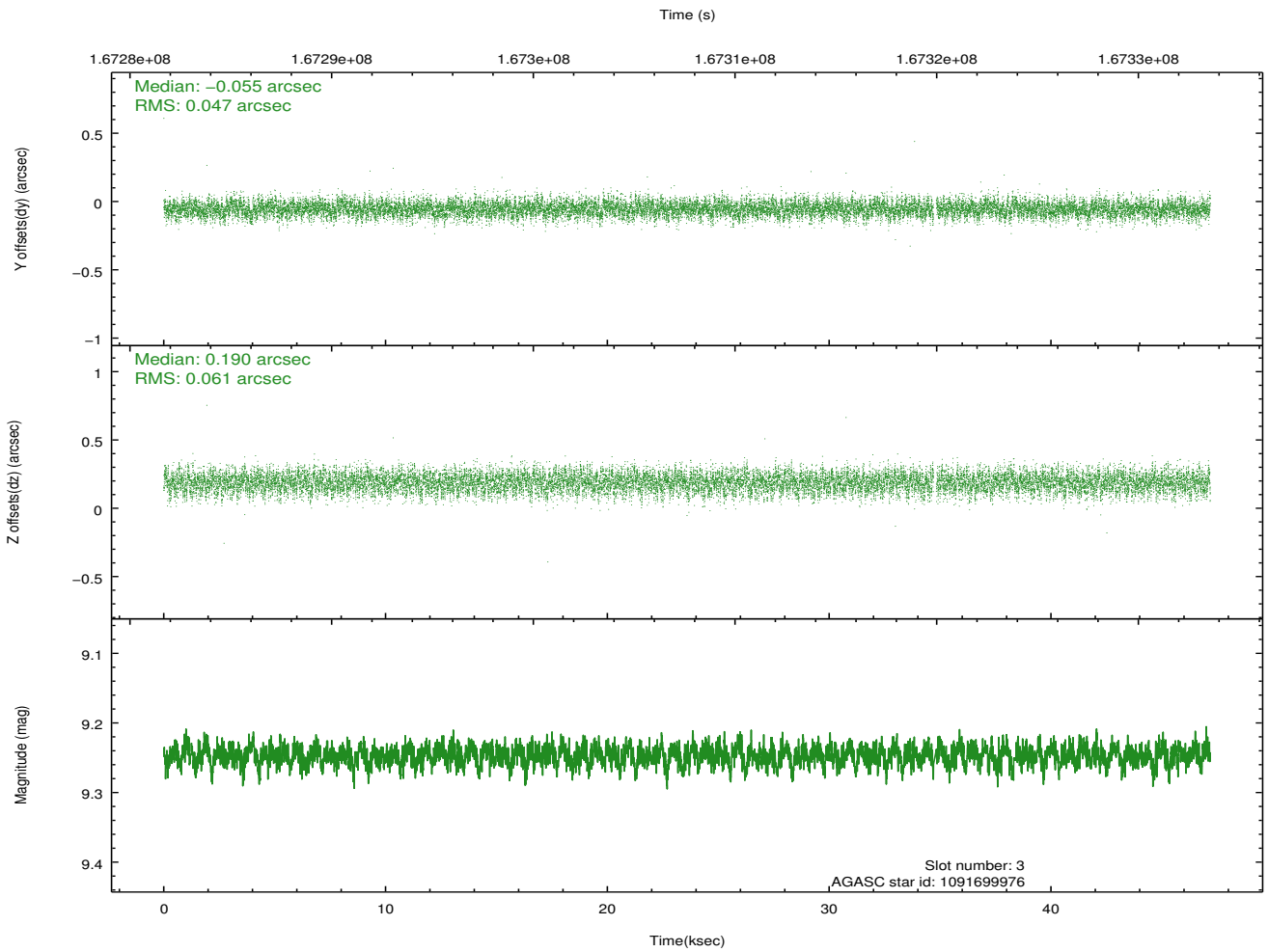
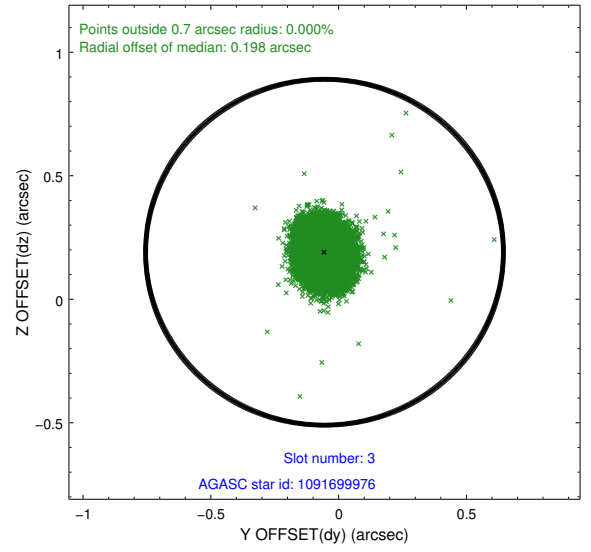
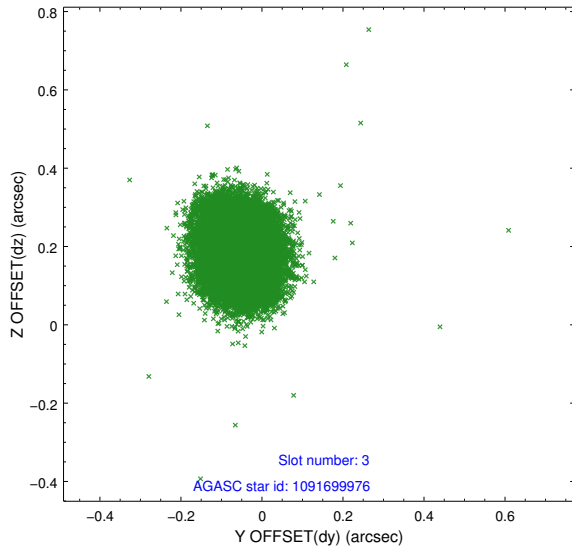


Slot Statistics

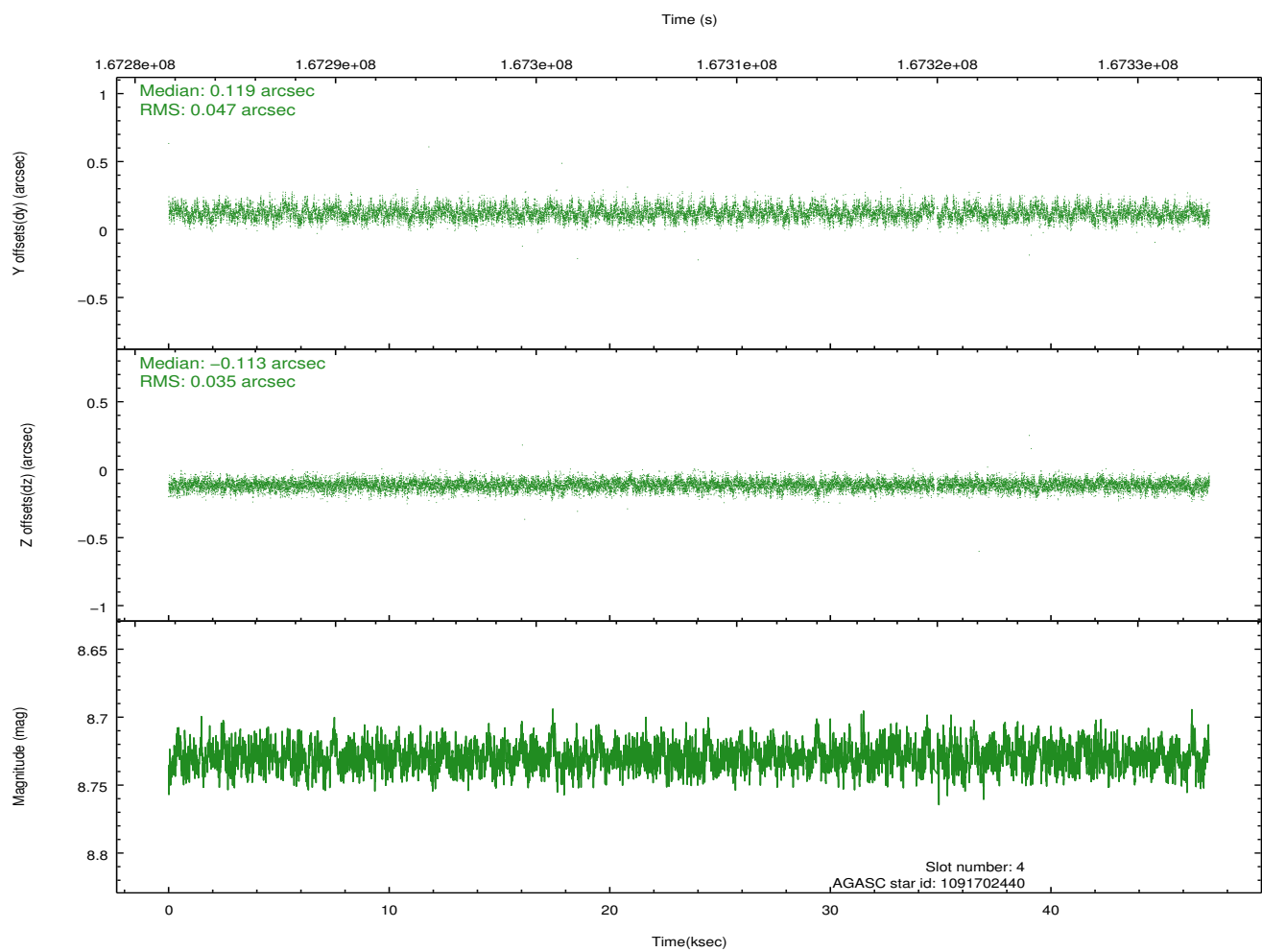
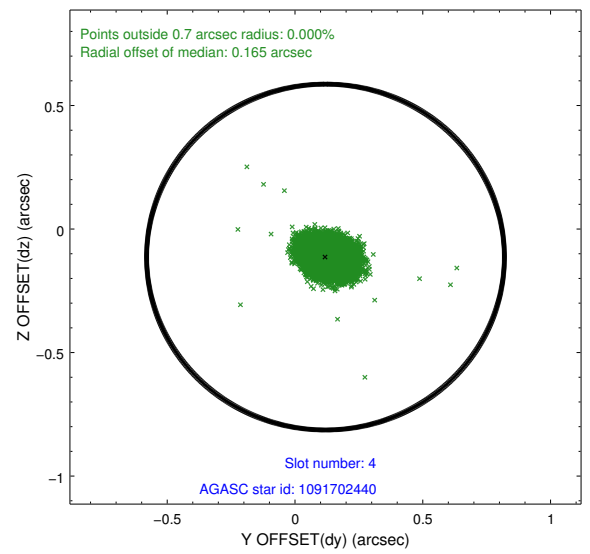
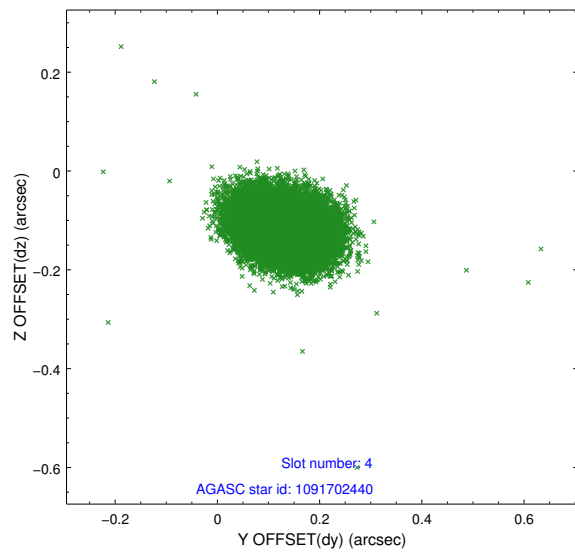
slot	status	id	mag	n_pts	med_dy	med_dz	dr1	dr2	ra	dec	mean_y	mean_z
0	FID	ACIS-S-1	7.19	11477	0.041	-0.057	0.008	0.014	0.000000	0.000000	940.62	-1723.99
1	FID	ACIS-S-5	7.24	11478	-0.032	0.037	0.008	0.013	0.000000	0.000000	-1808.43	173.70
2	FID	ACIS-S-6	7.36	11478	-0.030	0.032	0.010	0.019	0.000000	0.000000	406.14	817.62
3	GUIDE	1091699976	9.25	22942	-0.055	0.190	0.081	0.132	249.617486	-47.776281	-162.03	-1934.51
4	GUIDE	1091702440	8.73	22946	0.119	-0.113	0.062	0.102	248.295809	-47.683380	-1620.97	933.11
5	GUIDE	1091709408	9.21	22933	-0.093	0.055	0.068	0.111	249.304466	-47.312562	835.57	-395.11
6	GUIDE	1091197728	9.37	22938	-0.085	-0.068	0.086	0.138	248.676222	-46.686919	1888.79	2123.34
7	GUIDE	1091706216	9.04	22901	0.115	-0.061	0.076	0.123	248.520013	-47.617493	-1123.86	609.38

2.4 Star Slots

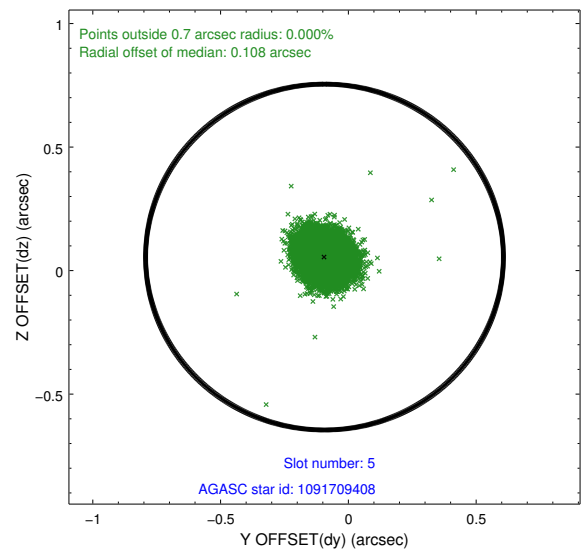
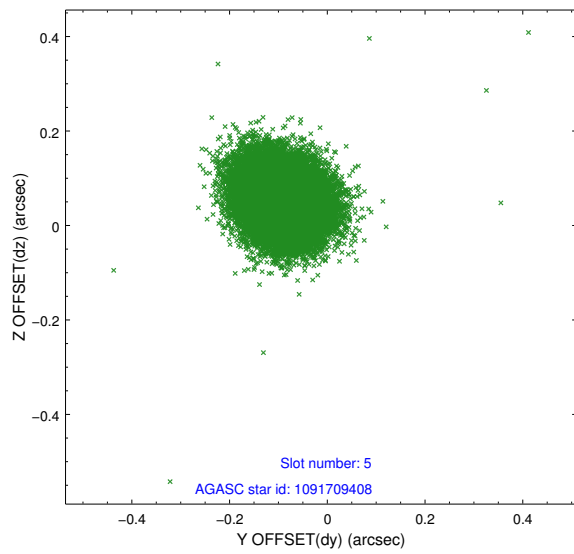
2.4.1 Slot 3



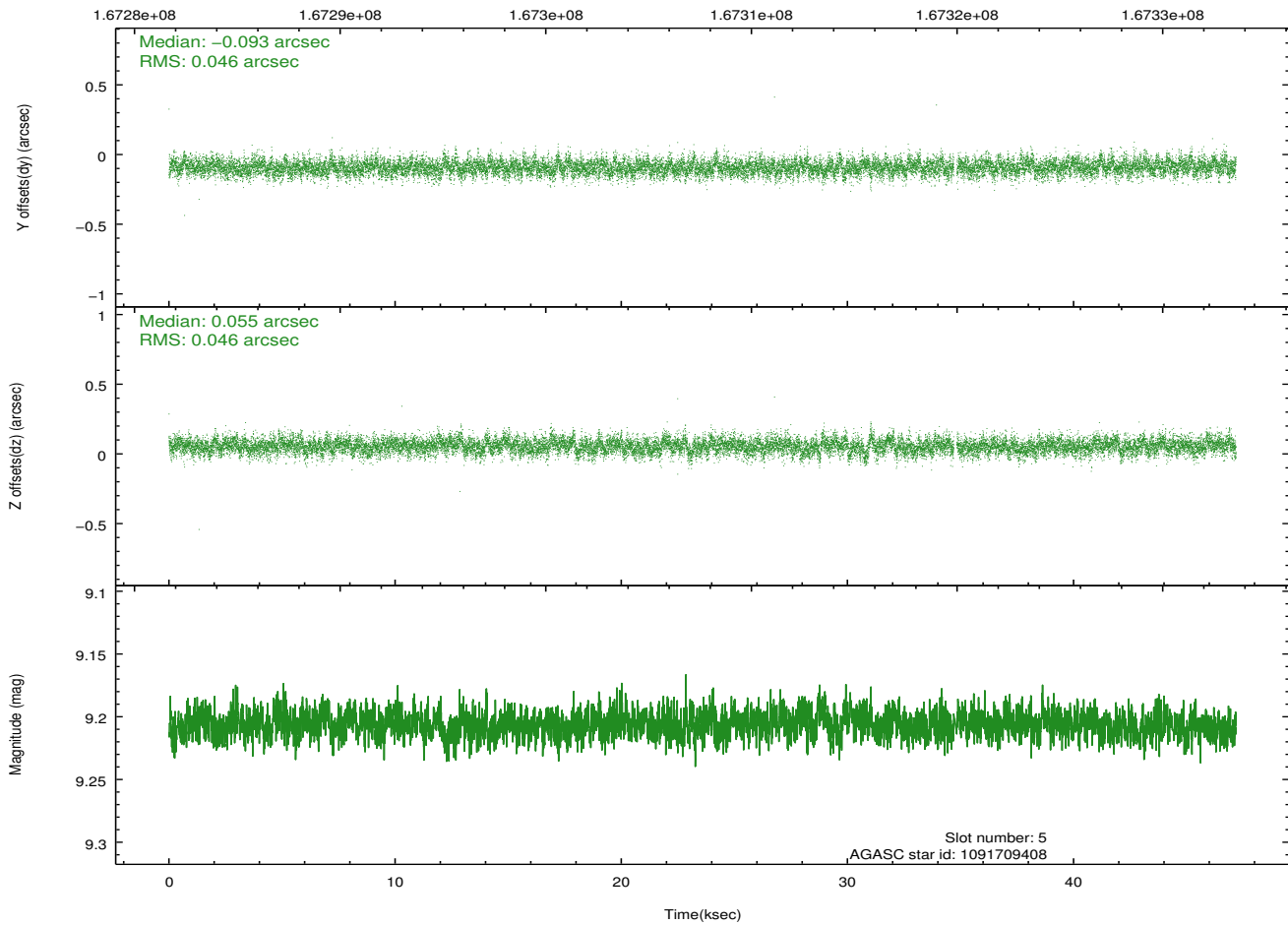
2.4.2 Slot 4



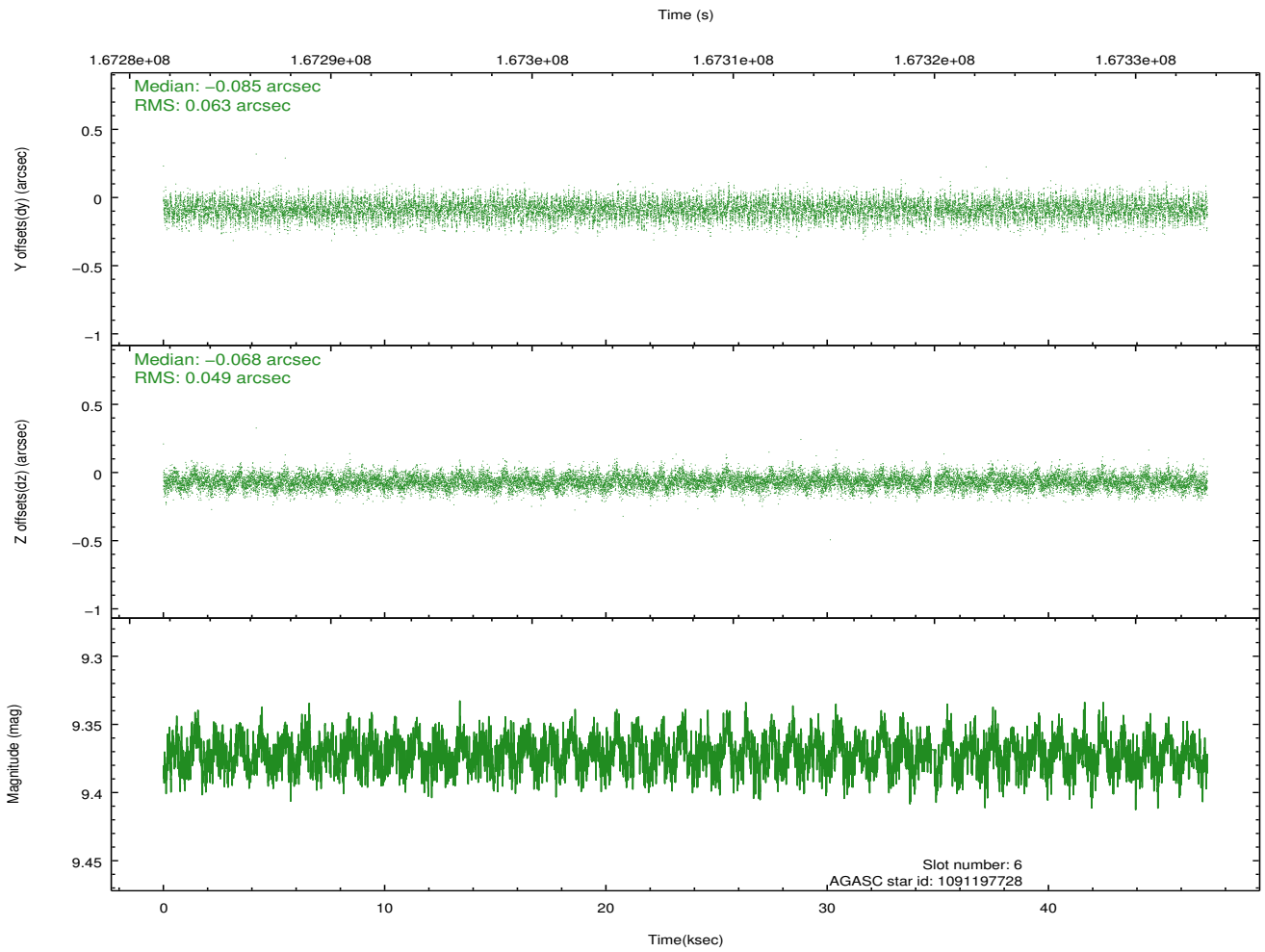
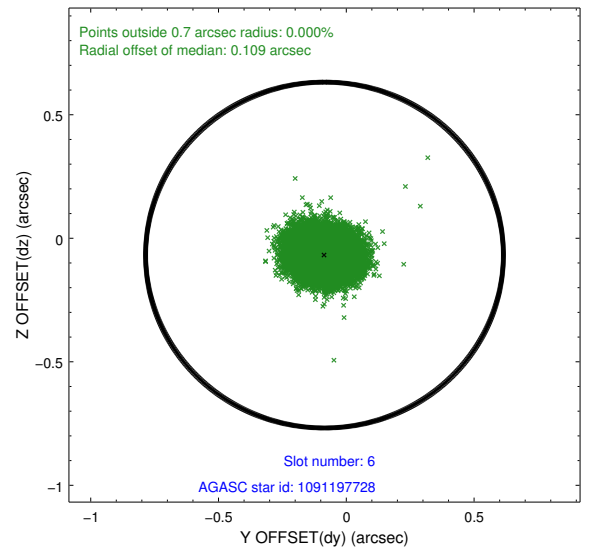
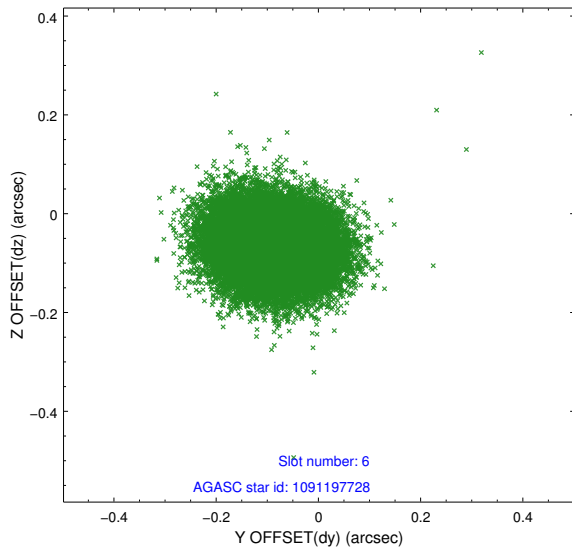
2.4.3 Slot 5



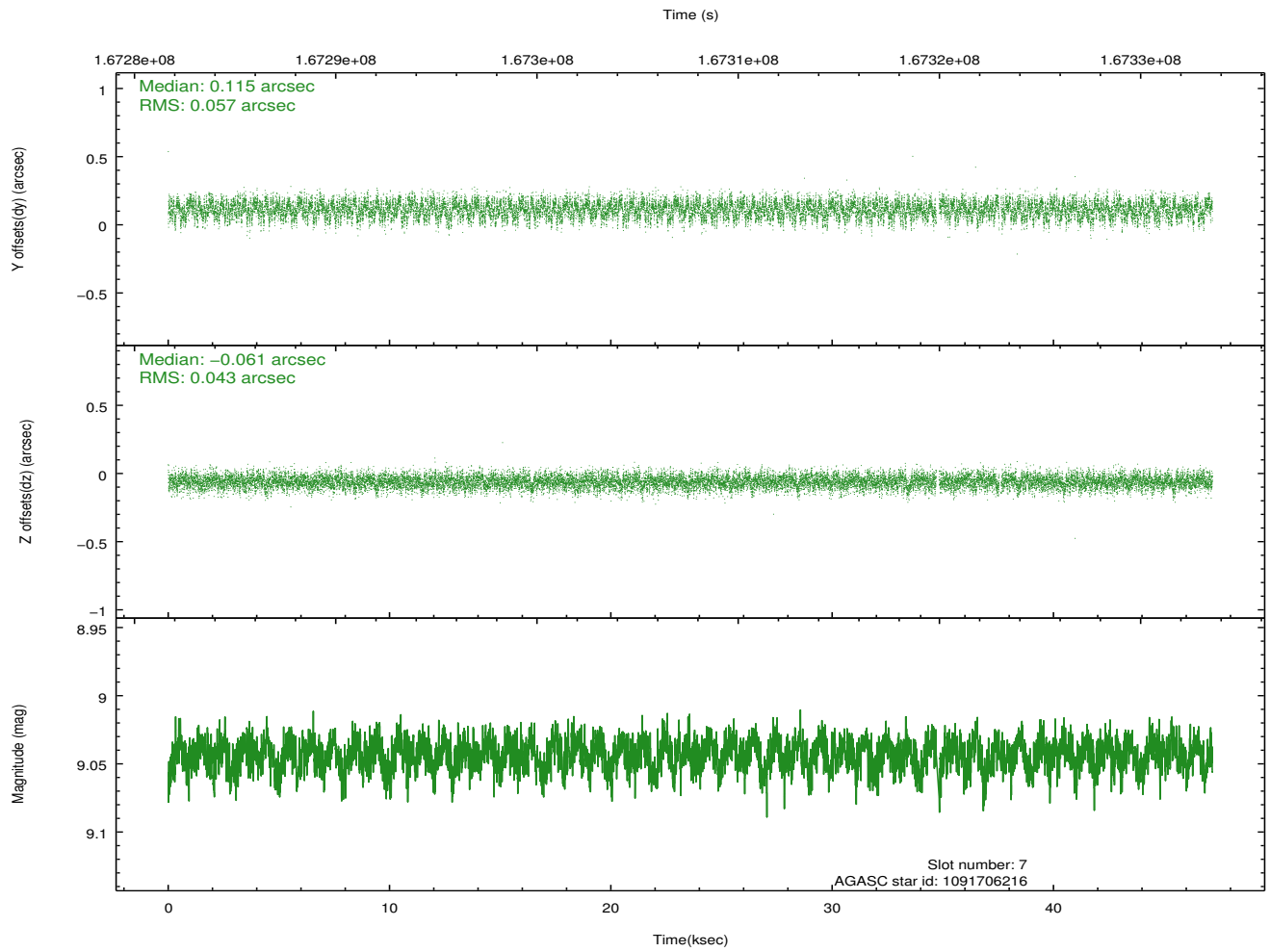
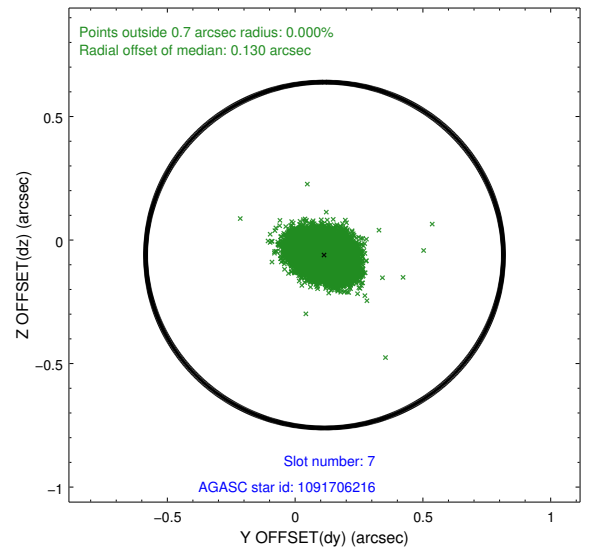
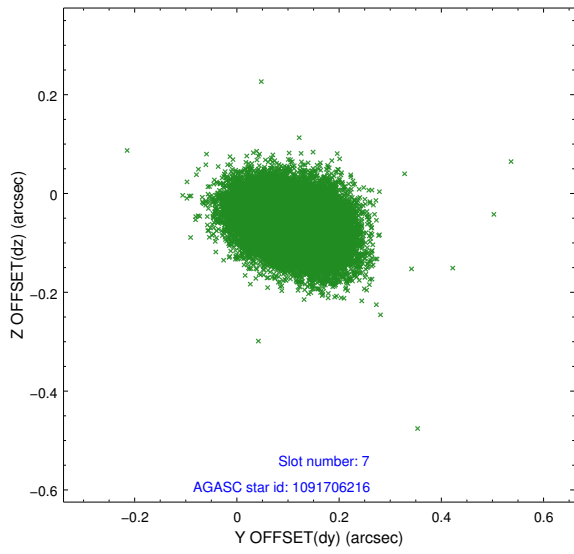
Time (s)



2.4.4 Slot 6

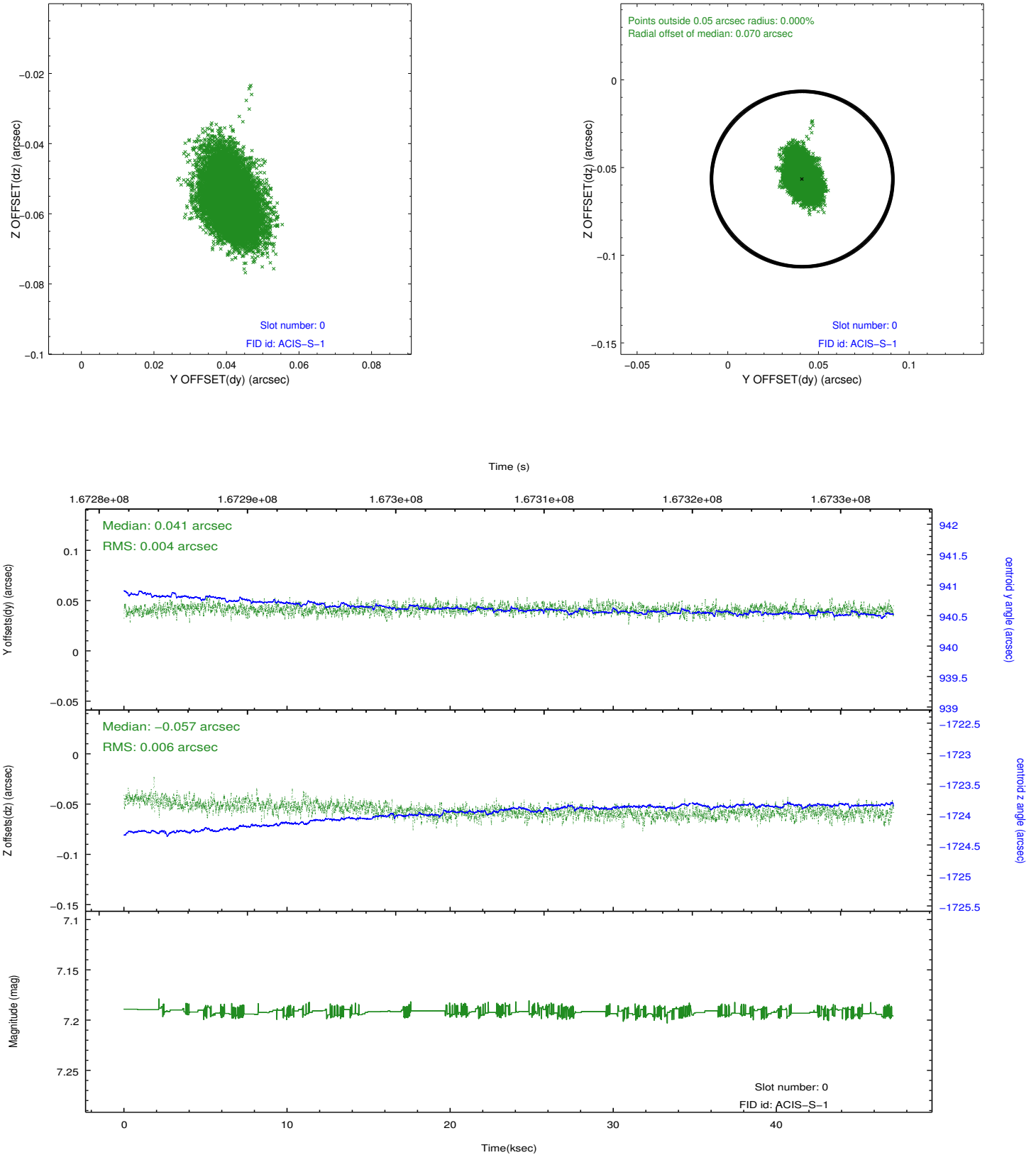


2.4.5 Slot 7

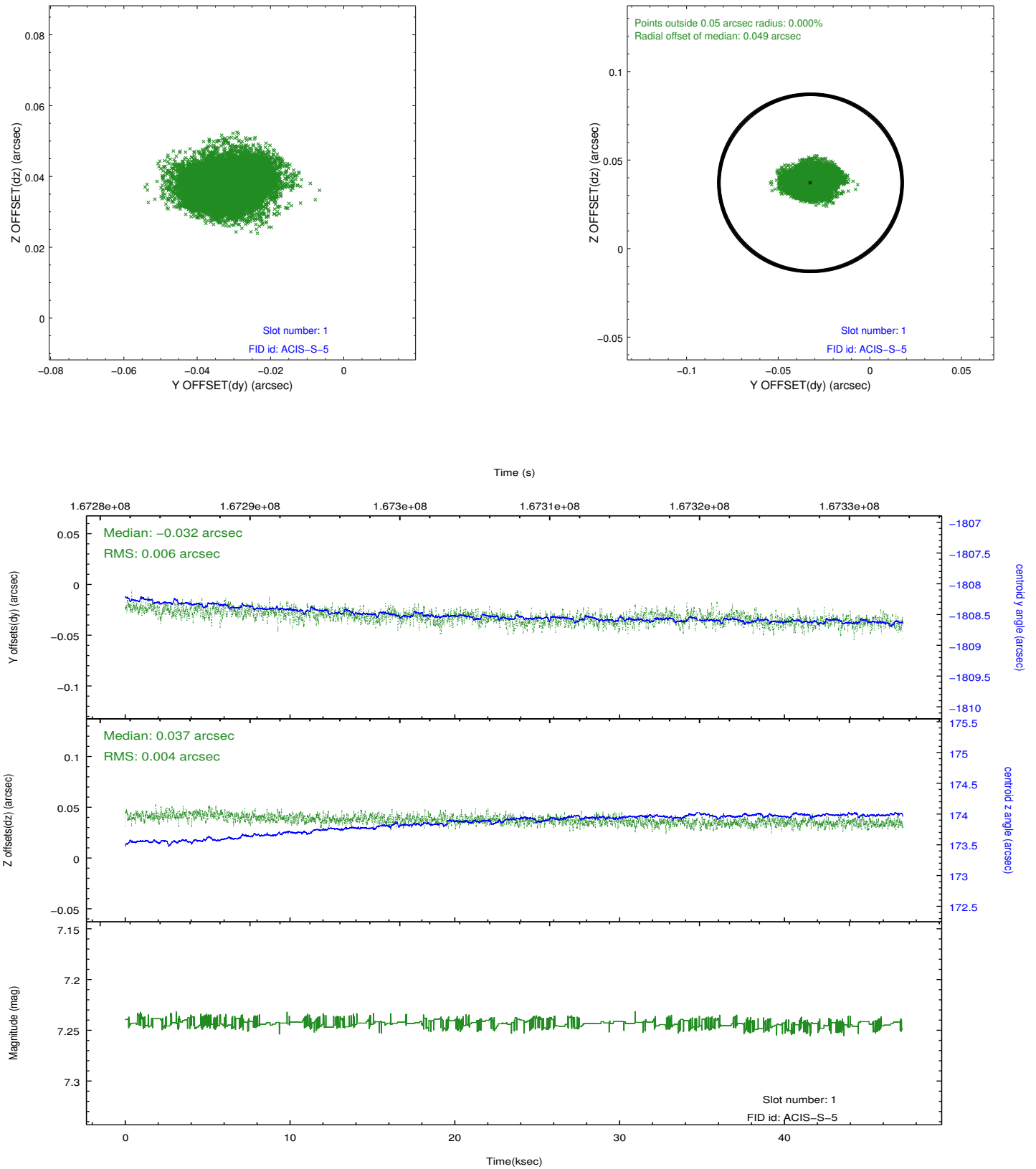


2.5 FID Slots

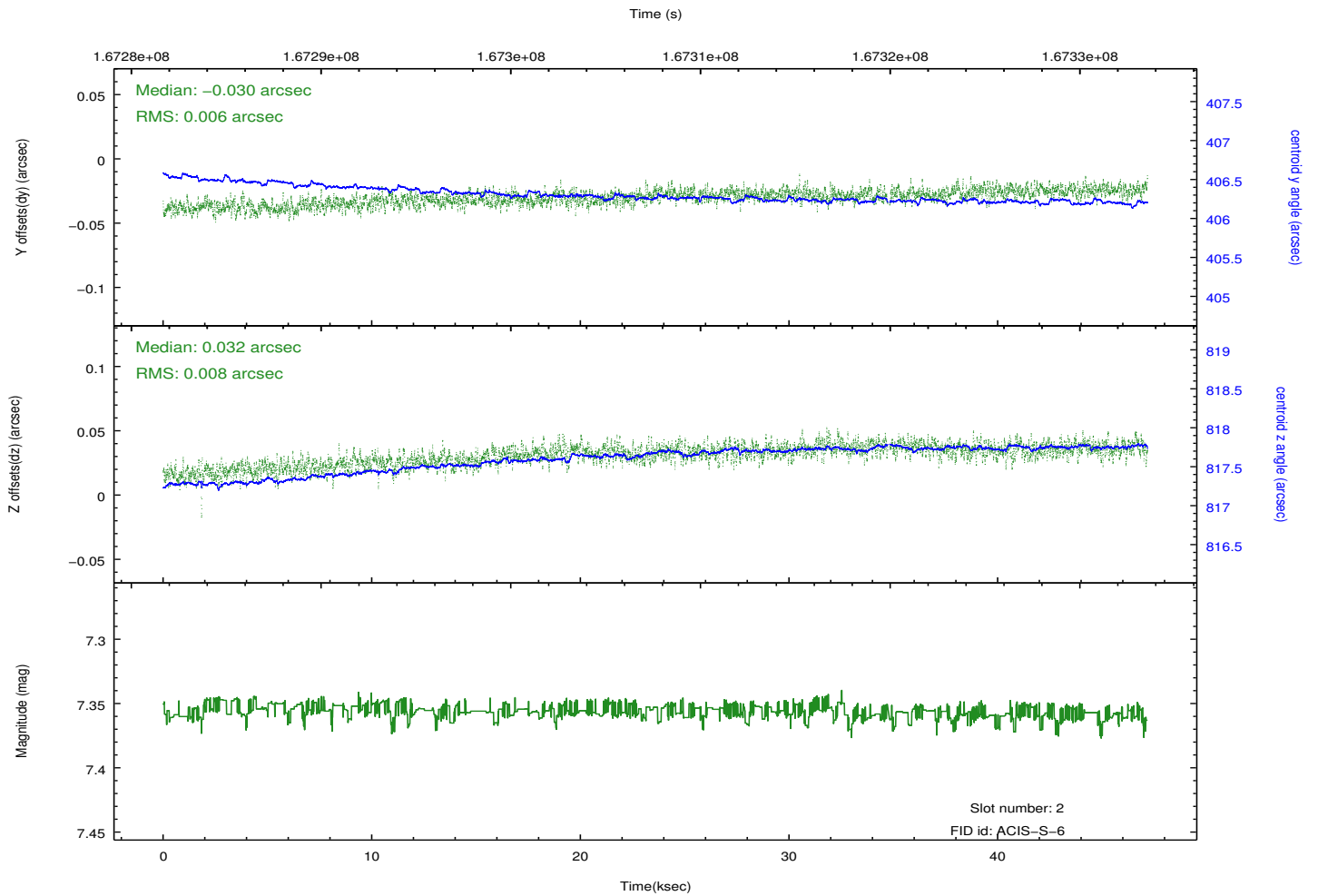
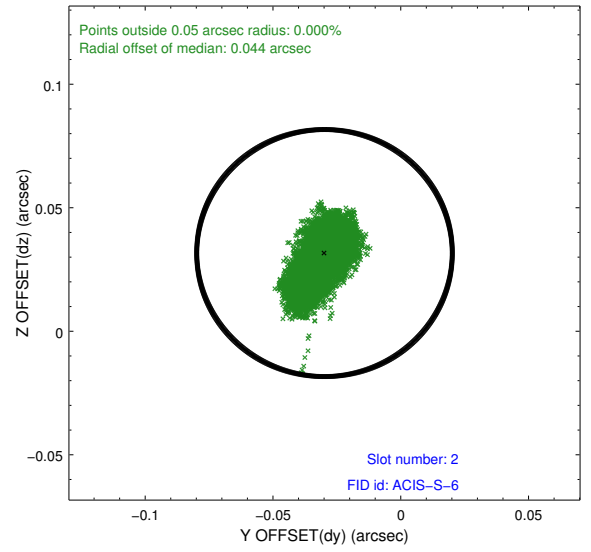
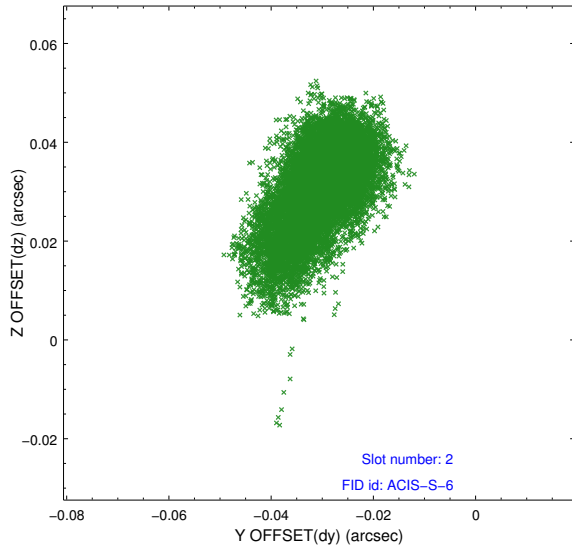
2.5.1 Slot 0



2.5.2 Slot 1



2.5.3 Slot 2



A Summary

A.1 Status

V&V Scientist	Joy Nichols
V&V Date (YYYY-MM-DD)	2012.11.06
V&V Edition	1
V&V Disposition and Status	OK
V&V Charge Time	47.051

A.2 Comments