

V&V Reference Report

L2 ASCDS Version : 8.4.5

Observation 4464 - L2 Version 4
Chandra X-Ray Center

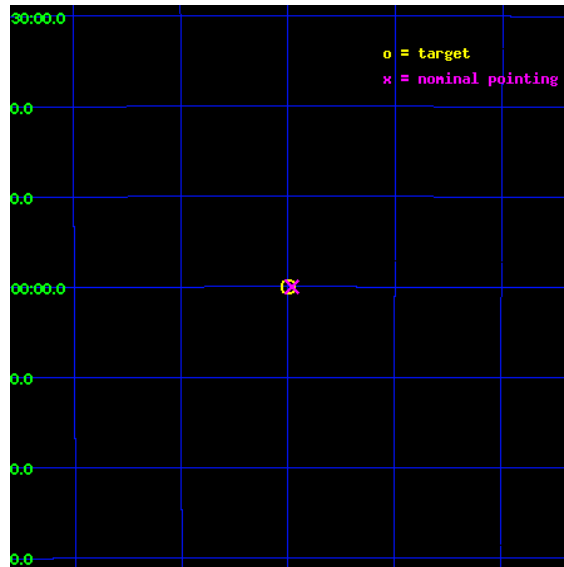
L2 Processing Date : Nov 30 2012

Contents

1	Front	2
2	OBI	3
2.1	OBI	3
2.1.1	Images	3
2.1.2	Parameters	4
2.1.3	Events	4
2.2	Compared Parameters	5
2.3	Star Slots	6
2.4	FID Slots	6
A	Summary	7
A.1	Status	7
A.2	Comments	7

1 Front

seq_num	100047	Sequence number
obs_id	4464	Observation id
title	A Search for Soft X-Ray Auroras on Earth	Proposal title
observer	Dr. Ronald Elsner	Principal investigator
object	EARTH	Source name
ra_targ	72.5	Observer's specified target RA [deg]
dec_targ	-37.0	Observer's specified target Dec [deg]
ra_nom	72.490466467619	Nominal RA [deg]
dec_nom	-37.000115011088	Nominal Dec [deg]
roll_nom	239.22795875024	Nominal Roll [deg]
revision	4	Processing version of data
ontime	0.0	[s]
livetime	0.0	Ontime multiplied by DTCOR
l2events	0	Number of level 2 events

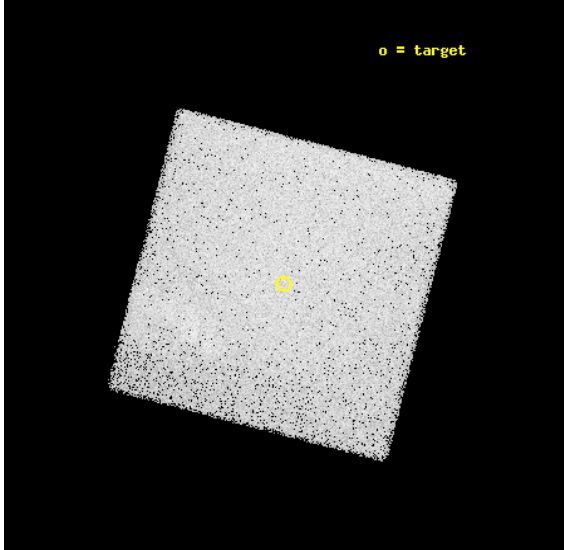


2 OBI

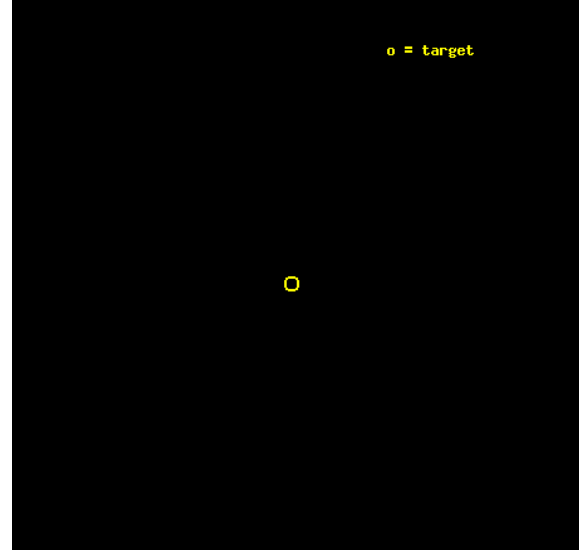
2.1 OBI

2.1.1 Images

Level 1 Image



Level 1 Bad Events



2.1.2 Parameters

obi_num	0	Obi number	sched_exp_time	1200.000000	[s] Scheduled observation exposure time
ascdsver	8.4.5	Processing system revision	ontime	0.0	[s]
caldbver	4.5.2	 	l1events	196056	Number of level 1 events
date	2012-11-30T13:24:29	Date and time of file creation			
revision	4	Processing version of data			

2.1.3 Events

Level 1 Events

	segment 0
level 1 events	196056
rejected events	0
rejected %	0%

2.2 Compared Parameters

Parameter	Planned	Actual	Parameter	Planned	Actual
Instrument	HRC	HRC	Obspar format version number	7	7
Detector	HRC-I	HRC-I	Obspar file type	PREDICTED	ACTUAL
Grating	NONE	NONE	Obspar update status	OVERRIDE	OVERRIDE
Data mode	OBSERVING	OBSERVING			
Observation mode	POINTING	POINTING			
[deg] Pointing RA	72.49048421286979	72.49046646761919			
[deg] Pointing Dec	-37.0000911204983	-37.00011501108807			
[deg] Pointing Roll	239.2279694228139	239.2279587502384			
[s] Window start time (MET)	197986264.184000	197986264.184000			
[s] Window stop time (MET)	197988664.184000	197988664.184000			
[mm] SIM focus pos	-1.0388663562	-1.0388663562			
[mm] SIM defocus	0.00142623215544524	0.00142623215544524			
[mm] SIM translation stage pos	126.98297999	126.98297999			
[mm] SIM translation stage offset	0.002514315287797331	0.002514315287797331			
[s] Observation start time (MET)	197987298.184	197987298.184			
Observation start date	2004-04-10T12:27:14	2004-04-10T12:28:18			
[s] Observation end time (MET)	197988498.184	197988498.184			
Observation end date	2004-04-10T12:47:14	2004-04-10T12:48:18			

2.3 Star Slots

2.4 FID Slots

A Summary

A.1 Status

V&V Scientist	Beth Sundheim
V&V Date (YYYY-MM-DD)	2012.12.06
V&V Edition	1
V&V Disposition and Status	OK
V&V Charge Time	1.2

A.2 Comments

Window preference met.

Because the OBC aspect solution was used, there are no L2 events, and consequently no GTIs. Charge time is taken from the L1 ontime instead.