

# V&V Reference Report

## L2 ASCDS Version : 8.5.1

Observation 4504 - L2 Version 3  
Chandra X-Ray Center

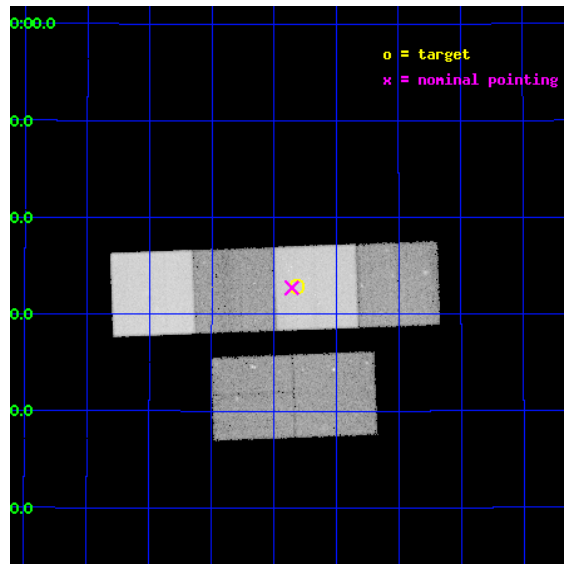
L2 Processing Date : Dec 16 2012

## Contents

<b>1</b>	<b>Front</b>	<b>2</b>
<b>2</b>	<b>OBI</b>	<b>3</b>
2.1	OBI . . . . .	3
2.1.1	Images . . . . .	3
2.1.2	Bias . . . . .	3
2.1.3	Parameters . . . . .	4
2.1.4	Events . . . . .	4
2.2	Compared Parameters . . . . .	5
2.3	Aspect . . . . .	6
2.4	Star Slots . . . . .	9
2.4.1	Slot 3 . . . . .	9
2.4.2	Slot 4 . . . . .	10
2.4.3	Slot 5 . . . . .	11
2.4.4	Slot 6 . . . . .	12
2.4.5	Slot 7 . . . . .	13
2.5	FID Slots . . . . .	14
2.5.1	Slot 0 . . . . .	14
2.5.2	Slot 1 . . . . .	15
2.5.3	Slot 2 . . . . .	16
<b>A</b>	<b>Summary</b>	<b>17</b>
A.1	Status . . . . .	17
A.2	Comments . . . . .	17

# 1 Front

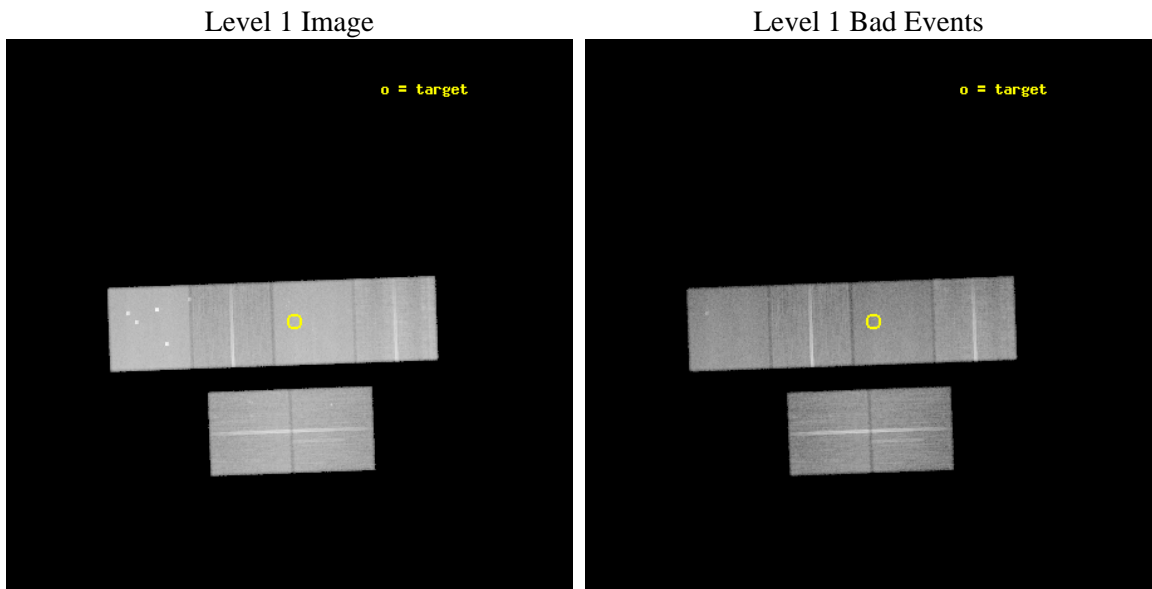
seq_num	200273	Sequence number
obs_id	4504	Observation id
title	Wind-Wind Interactions and Stellar Magnetic Fields in Pre-Planetary Nebulae	Proposal title
observer	Dr. Raghvendra Sahai	Principal investigator
object	M1-92	Source name
dtcycle	0	&#160
cycle	P	events from which exps? Prim/Second/Both
ra_targ	294.078333	Observer's specified target RA [deg]
dec_targ	29.547611	Observer's specified target Dec [deg]
ra_nom	294.08921860433	Nominal RA [deg]
dec_nom	29.545562068387	Nominal Dec [deg]
roll_nom	357.90478881507	Nominal Roll [deg]
revision	3	Processing version of data
ontime	39756.492299646	Sum of GTIs [s]
livetime	39253.071655662	Livetime [s]
ontime2	39756.533359528	Sum of GTIs [s]
ontime3	39756.369199514	Sum of GTIs [s]
ontime5	39756.451259643	Sum of GTIs [s]
ontime6	39756.410239518	Sum of GTIs [s]
ontime7	39756.492299646	Sum of GTIs [s]
ontime8	39749.846089542	Sum of GTIs [s]
l2events	455701	Number of level 2 events



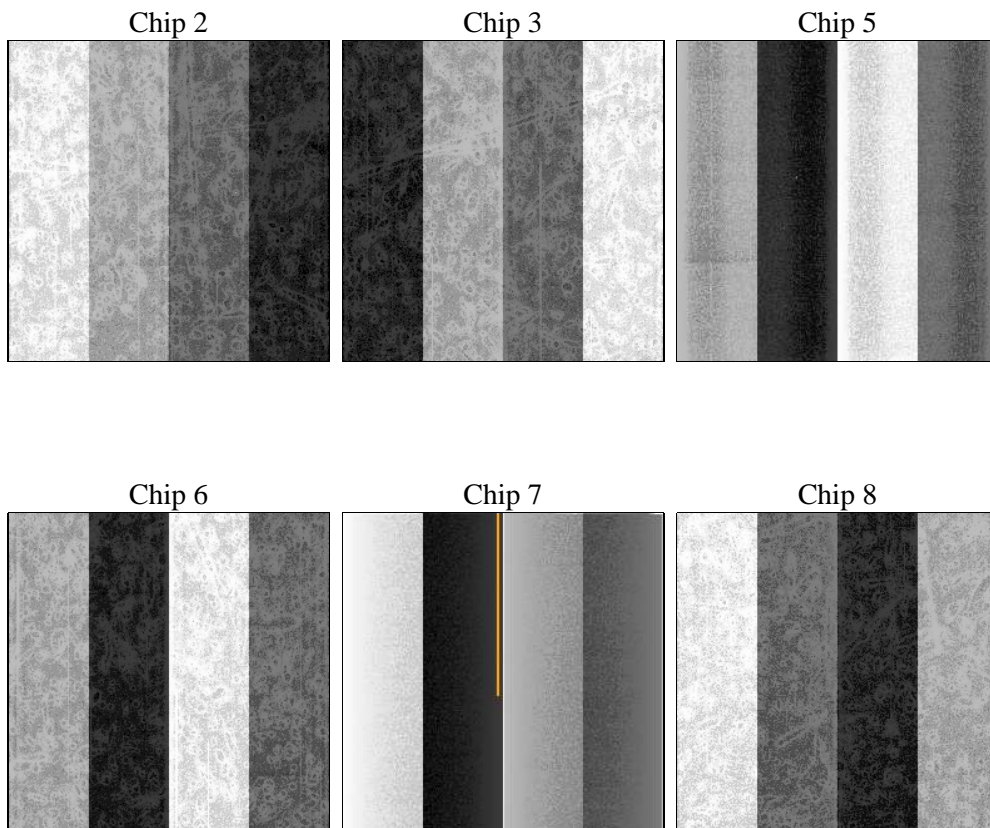
## 2 OBI

### 2.1 OBI

#### 2.1.1 Images



#### 2.1.2 Bias



### 2.1.3 Parameters

obi_num	1	Obi number	sched_exp_time	40000.000000	[s] Scheduled observation exposure time
ascdsver	8.5.1	Processing system revision	ontime	39756.492299646	Sum of GTIs [s]
caldbver	4.5.5	&#160	ontime2	39756.533359528	Sum of GTIs [s]
date	2012-12-16T00:52:29	Date and time of file creation	ontime3	39756.369199514	Sum of GTIs [s]
revision	3	Processing version of data	ontime5	39756.451259643	Sum of GTIs [s]
			ontime6	39756.410239518	Sum of GTIs [s]
			ontime7	39756.492299646	Sum of GTIs [s]
			ontime8	39749.846089542	Sum of GTIs [s]
			l1events	2007140	Number of level 1 events

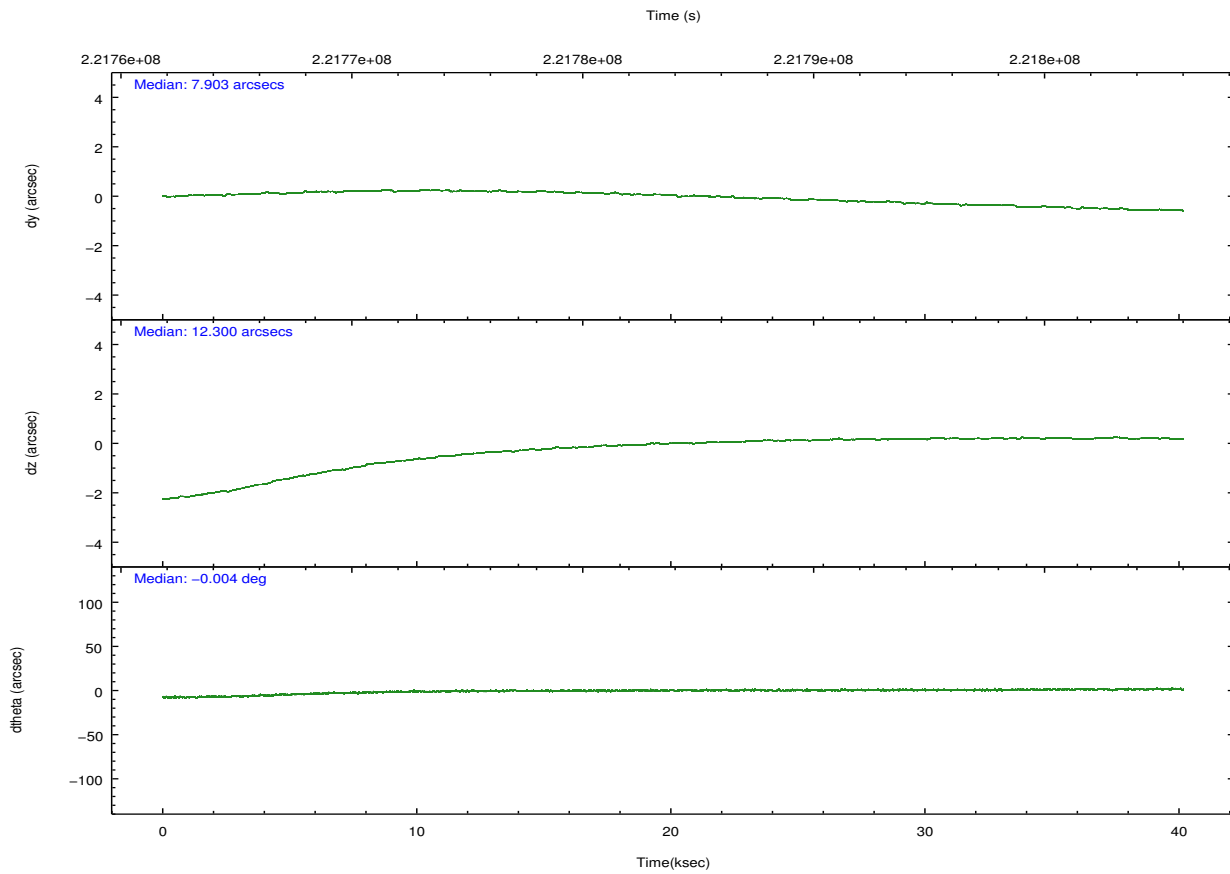
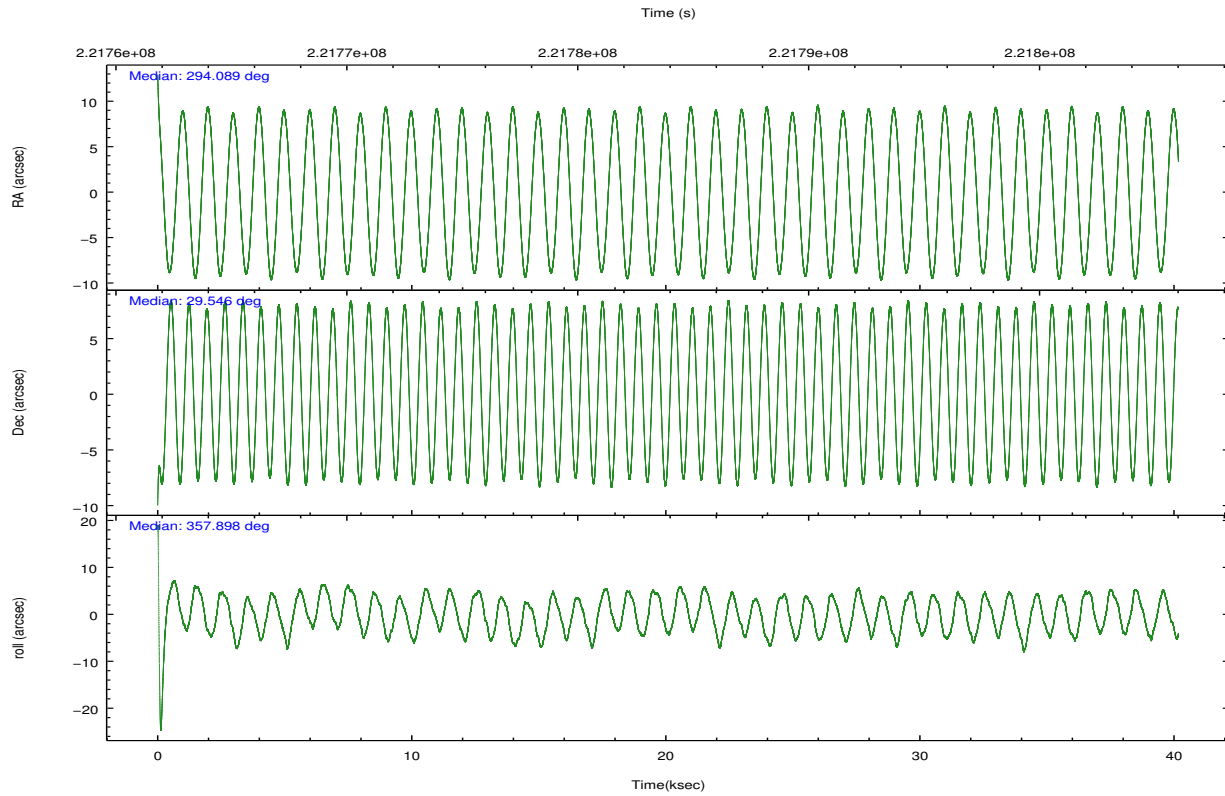
### 2.1.4 Events

	ccd 2	ccd 3	ccd 5	ccd 6	ccd 7	ccd 8		ccd 2	ccd 3	ccd 5	ccd 6	ccd 7	ccd 8
level 1 events	284405	269598	429495	280156	379864	363622	grade 0 events	15479	14609	27759	13290	14044	25051
rejected events	249940	236698	227746	246839	221788	284813		5%	5%	6%	4%	3%	6%
rejected %	87%	87%	53%	88%	58%	78%	grade 1 events	195	146	522	118	374	268
								0%	0%	0%	0%	0%	0%
							grade 2 events	7050	6238	58060	6826	31334	17134
								2%	2%	13%	2%	8%	4%
							grade 3 events	3277	3120	7506	3292	13979	8478
								1%	1%	1%	1%	3%	2%
							grade 4 events	3079	3223	7102	3259	13973	7875
								1%	1%	1%	1%	3%	2%
							grade 5 events	11261	12378	30838	13062	36370	17193
								3%	4%	7%	4%	9%	4%
							grade 6 events	5582	5713	101336	6652	84757	20276
								1%	2%	23%	2%	22%	5%
							grade 7 events	238482	224171	196372	233657	185033	267347
								83%	83%	45%	83%	48%	73%

## 2.2 Compared Parameters

Parameter	Planned	Actual	Parameter	Planned	Actual
Instrument	ACIS	ACIS	Obspar format version number	7	7
Detector	ACIS-235678	ACIS-235678	Obspar file type	PREDICTED	ACTUAL
Grating	NONE	NONE	Obspar update status	NONE	UPDATED
Data mode	FAINT	FAINT	Number of optional ACIS chips dropped	0	0
Observation mode	POINTING	POINTING	On-chip summing requested	N	N
[deg] Pointing RA	294.061742	294.0892186043304	Subarray requested	NONE	NONE
[deg] Pointing Dec	29.532502	29.54556206838722	Alternating exposures requested	N	N
[deg] Pointing Roll	357.761690	357.9047888150651	[s] Primary exposure time	0.000000	3.2
[mm] SIM focus pos	-0.684267	-0.6828225247311905			
[mm] SIM defocus	0	0.001444936568705701			
[mm] SIM translation stage pos	-190.132523	-190.1425803651734			
[mm] SIM translation stage offset	0	0.01005778216563158			
[s] Observation start time (MET)	221764000.184000	221762798.11227			
Observation start date	2005-01-10T17:05:36	2005-01-10T16:46:38			
[s] Observation end time (MET)	221804000.184000	221805494.4892			
Observation end date	2005-01-11T04:12:16	2005-01-11T04:38:14			
Read mode	TIMED	TIMED			

## 2.3 Aspect

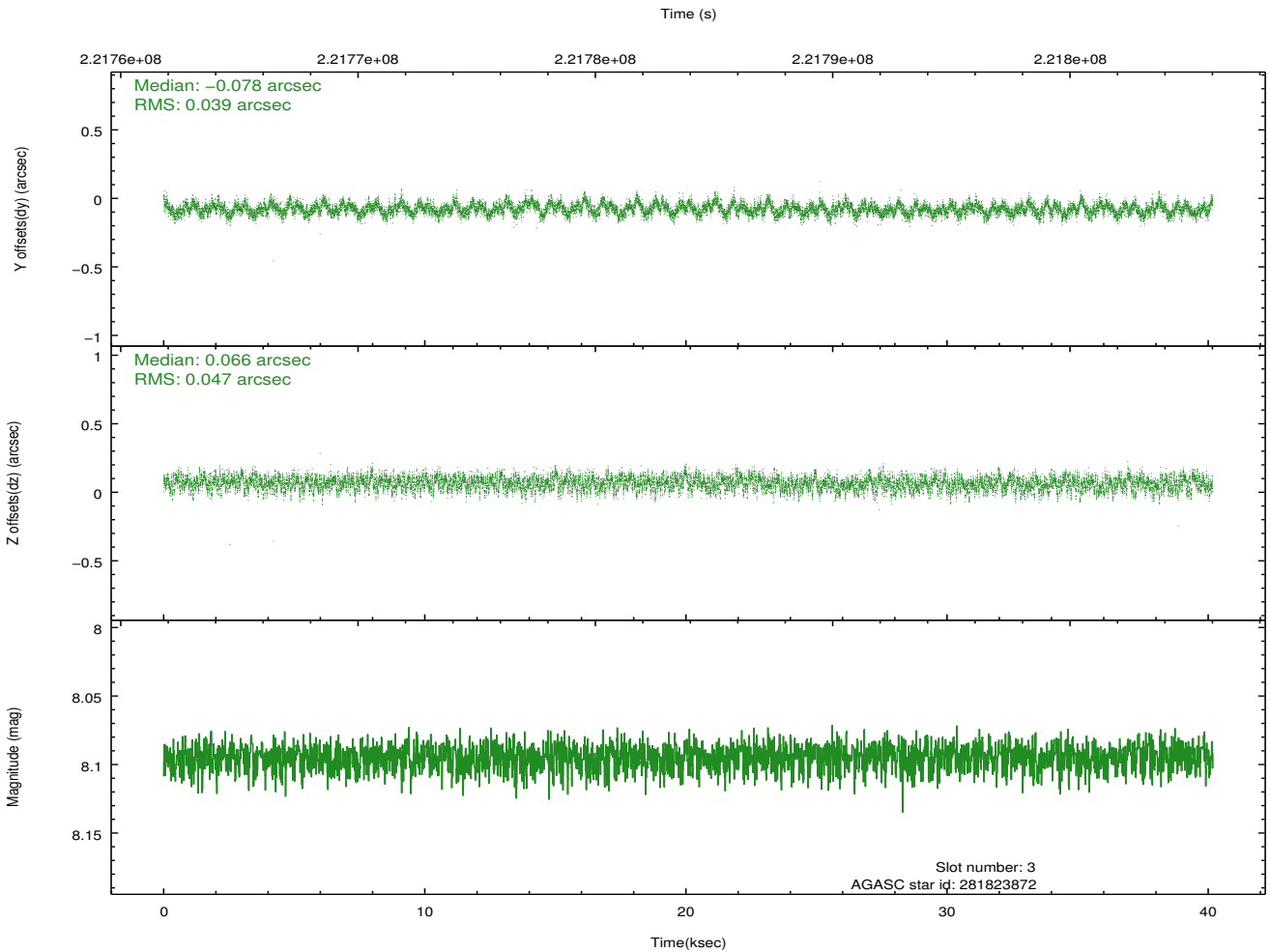
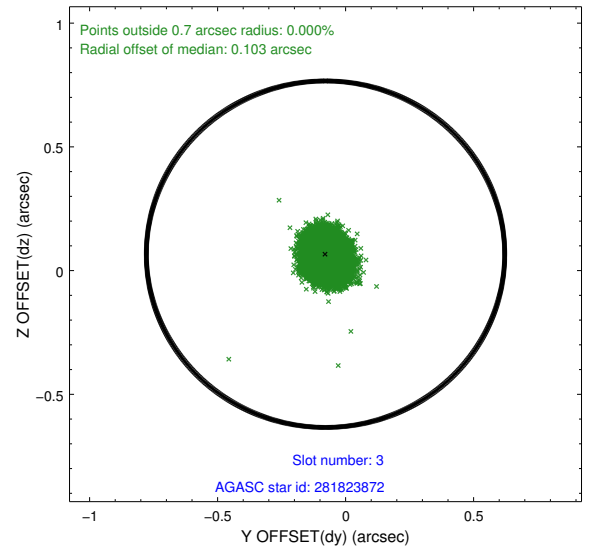
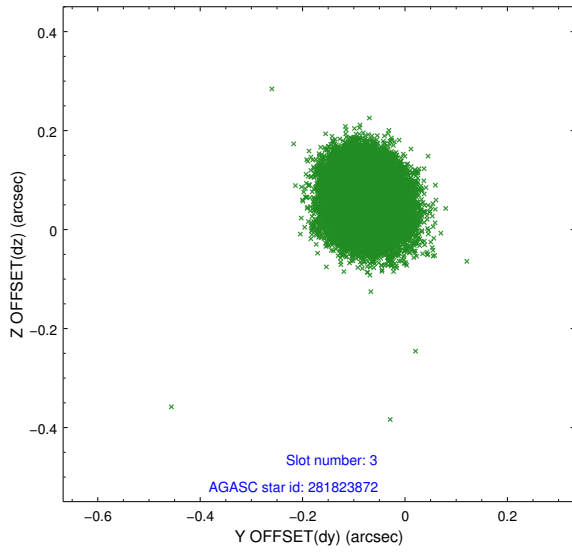


### Slot Statistics

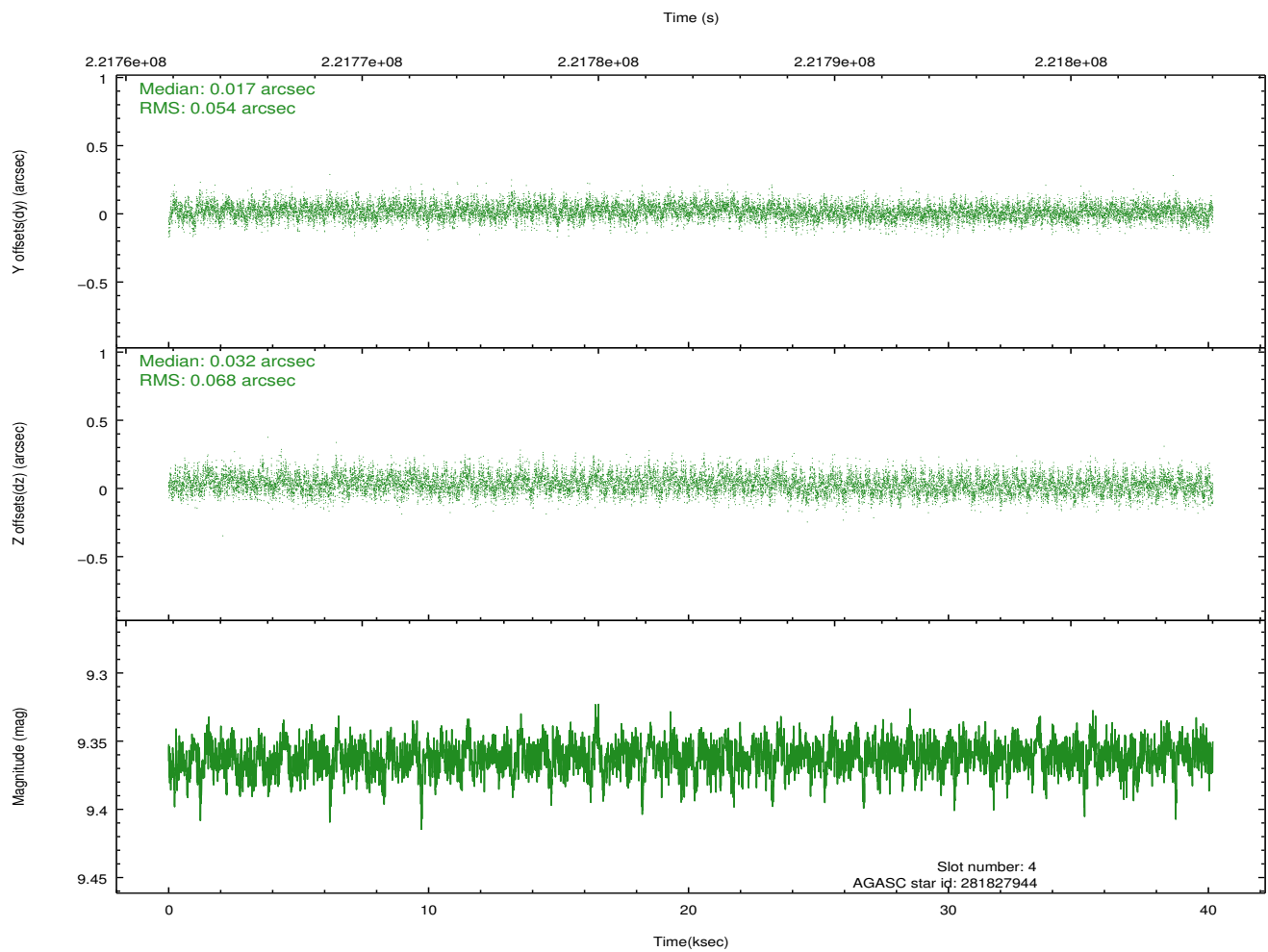
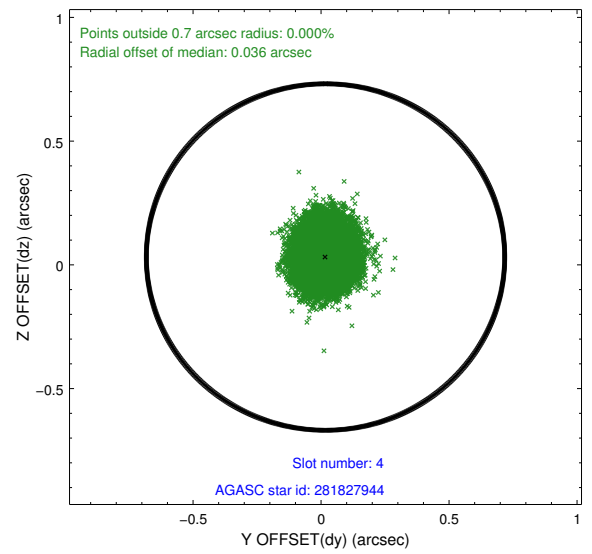
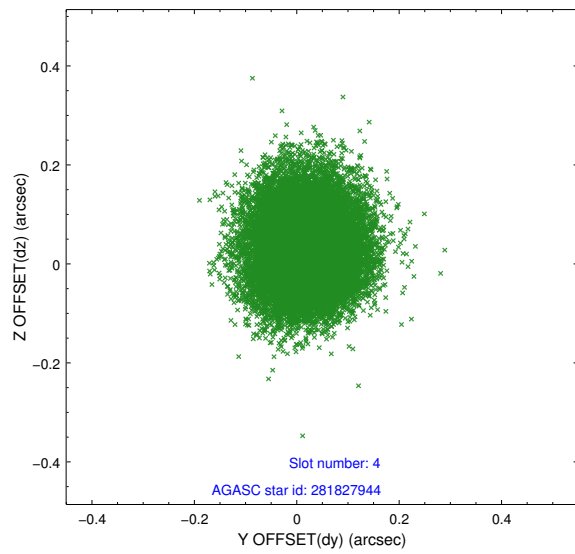
slot	status	id	mag	n_pts	med_dy	med_dz	dr1	dr2	ra	dec	mean_y	mean_z
0	FID	ACIS-S-1	7.19	9800	0.075	-0.058	0.012	0.027	0.000000	0.000000	935.46	-1728.91
1	FID	ACIS-S-2	7.10	9799	-0.009	0.009	0.016	0.027	0.000000	0.000000	-760.51	-1733.37
2	FID	ACIS-S-5	7.23	9800	-0.092	0.055	0.014	0.038	0.000000	0.000000	-1813.81	168.80
3	GUIDE	281823872	8.09	19594	-0.078	0.066	0.065	0.103	293.583727	29.366915	-1475.16	-651.12
4	GUIDE	281827944	9.36	19585	0.017	0.032	0.092	0.150	293.418907	29.040186	-1952.36	-1844.57
5	GUIDE	347998528	9.28	19590	0.031	-0.042	0.095	0.153	294.052060	30.163784	-118.97	2269.71
6	GUIDE	348009424	8.85	19595	-0.066	-0.071	0.089	0.140	294.512266	30.147769	1314.79	2271.18
7	GUIDE	281822608	9.81	19579	0.094	0.017	0.129	0.210	294.414251	29.049896	1176.99	-1690.63

## 2.4 Star Slots

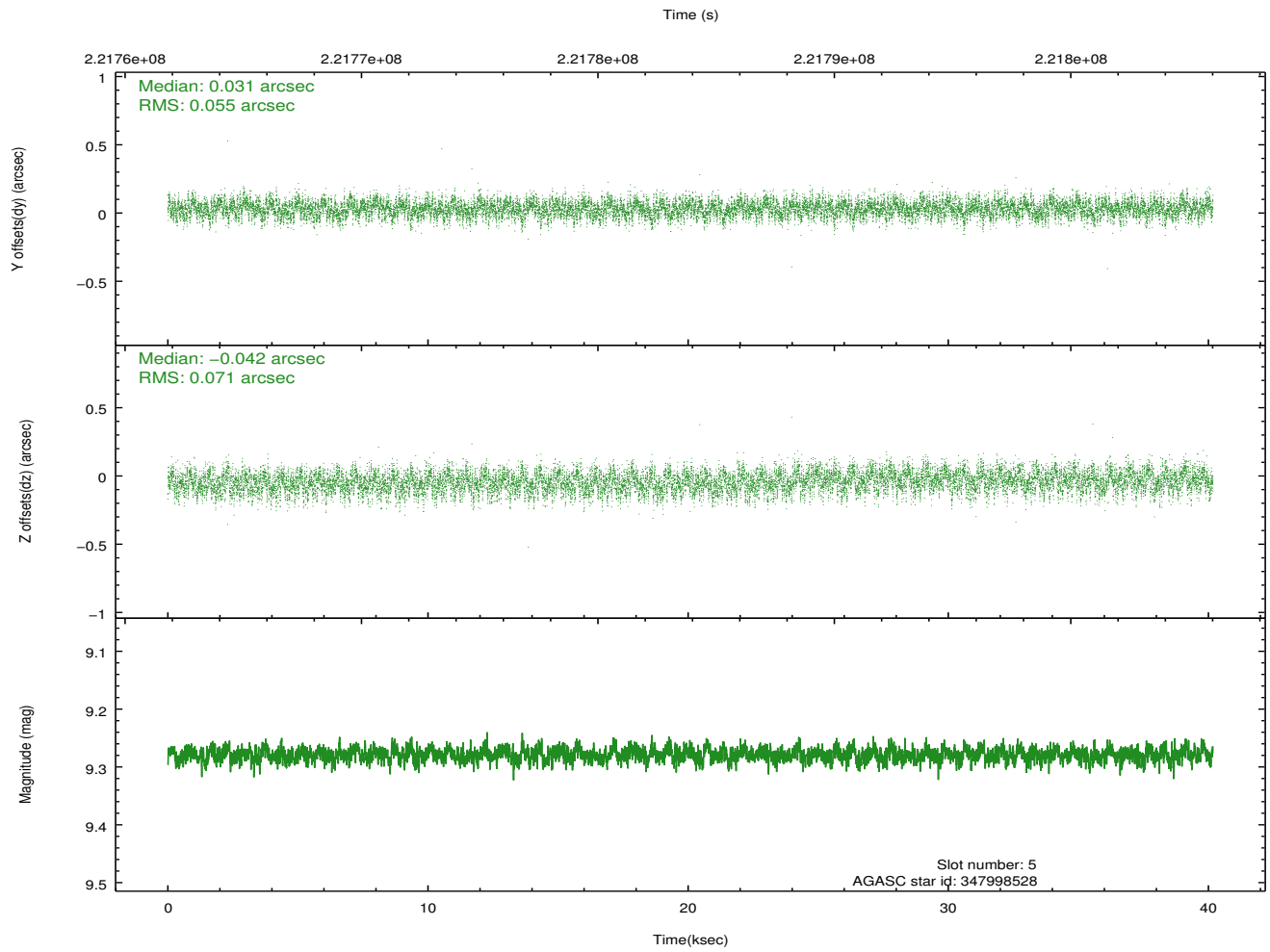
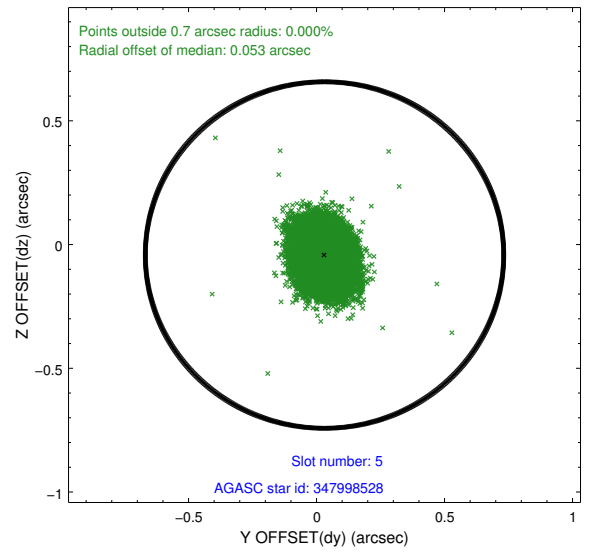
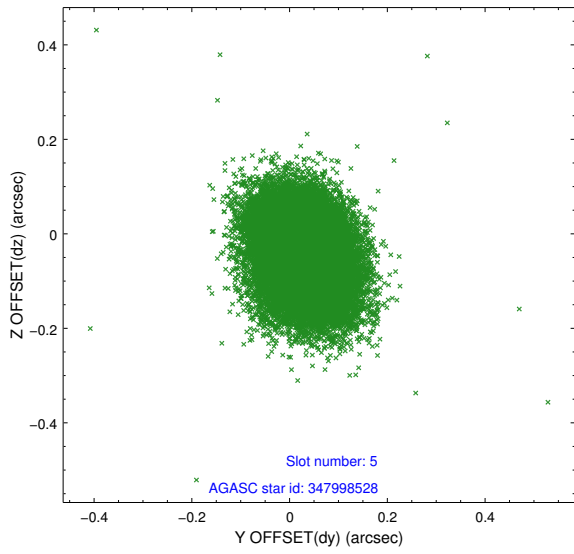
### 2.4.1 Slot 3



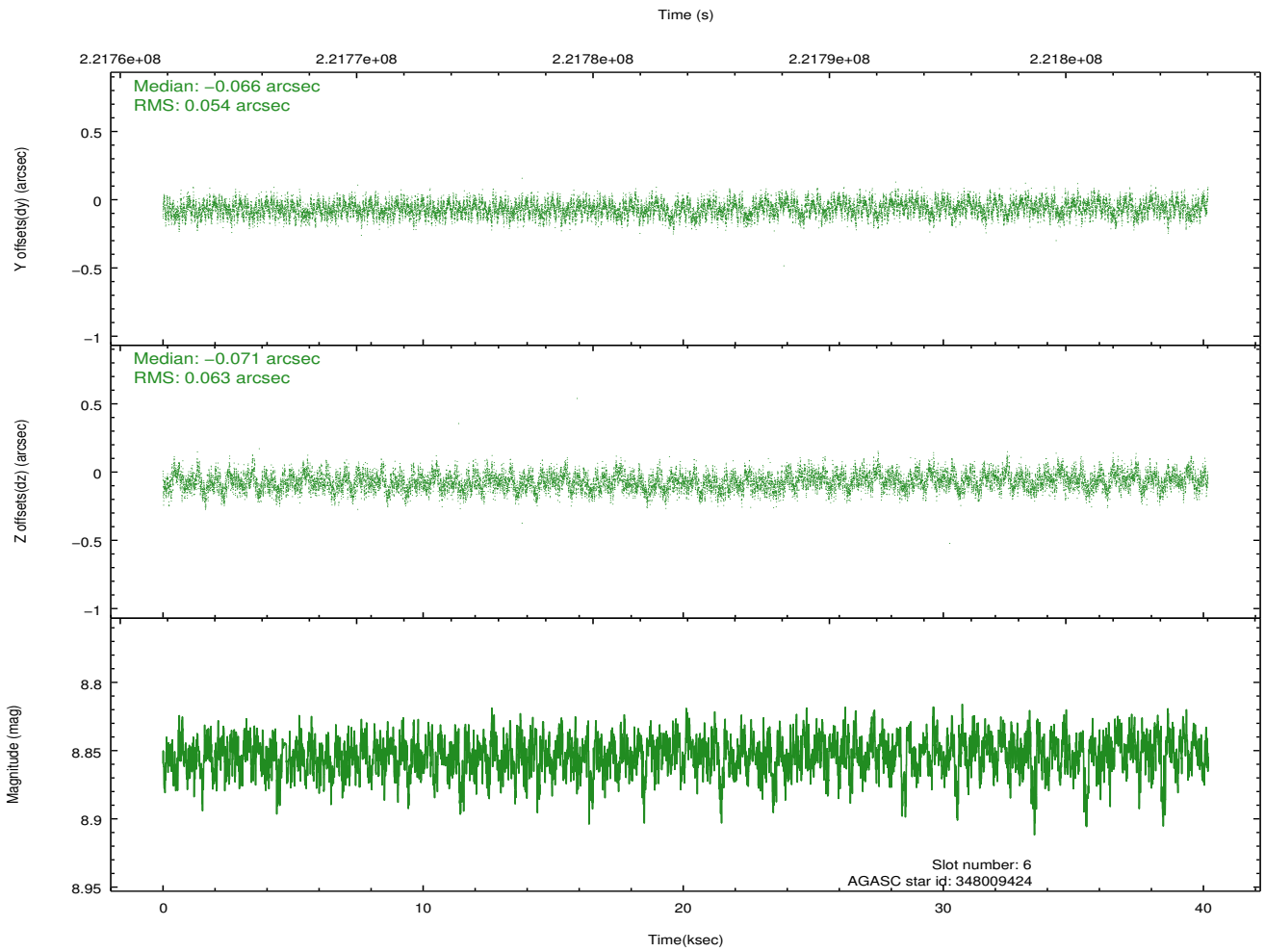
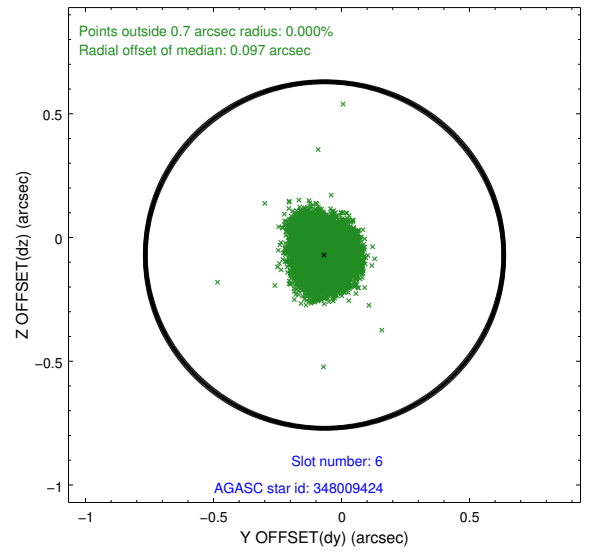
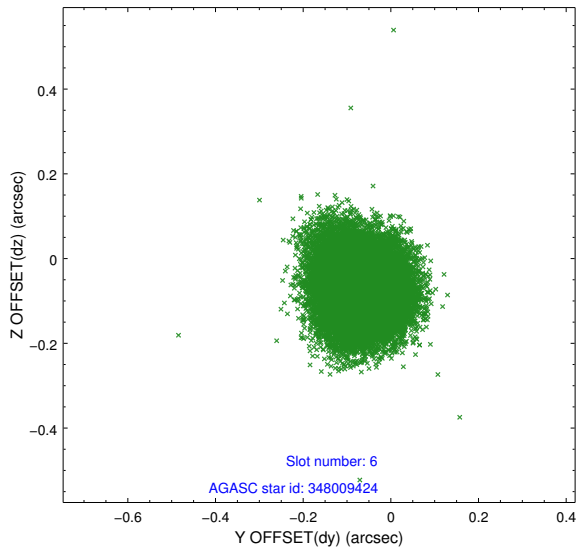
## 2.4.2 Slot 4



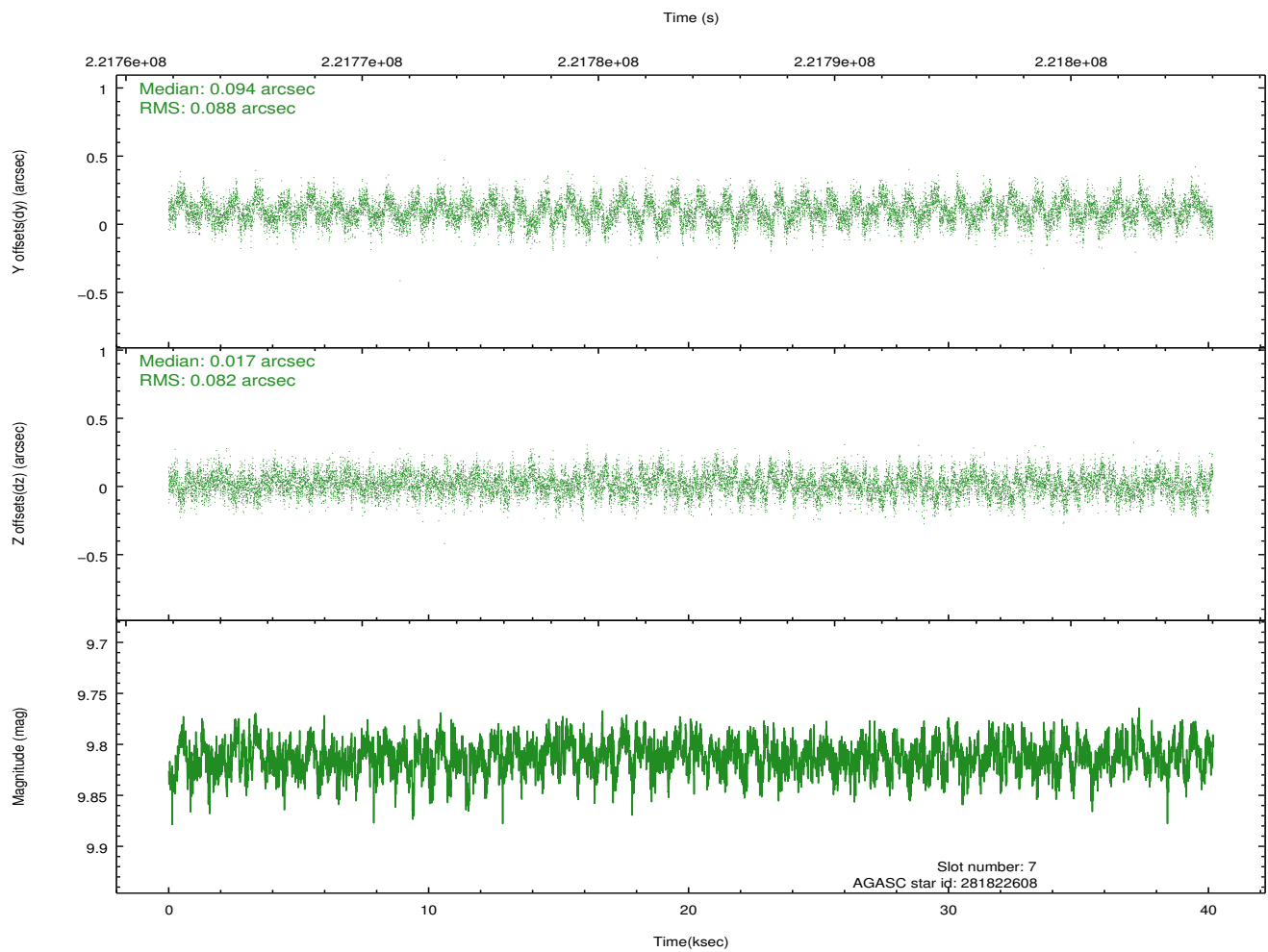
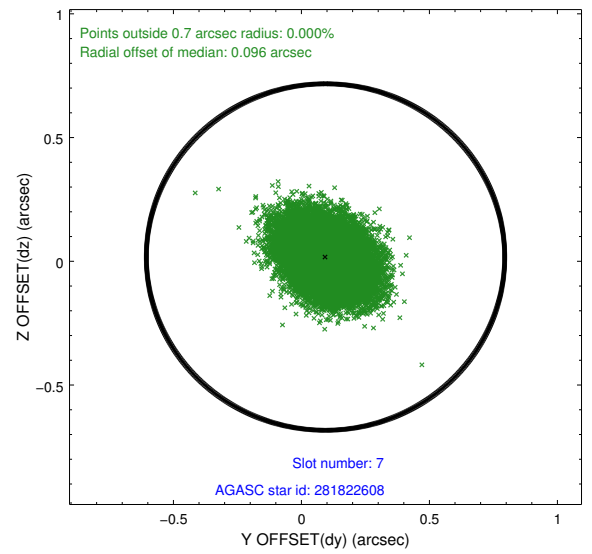
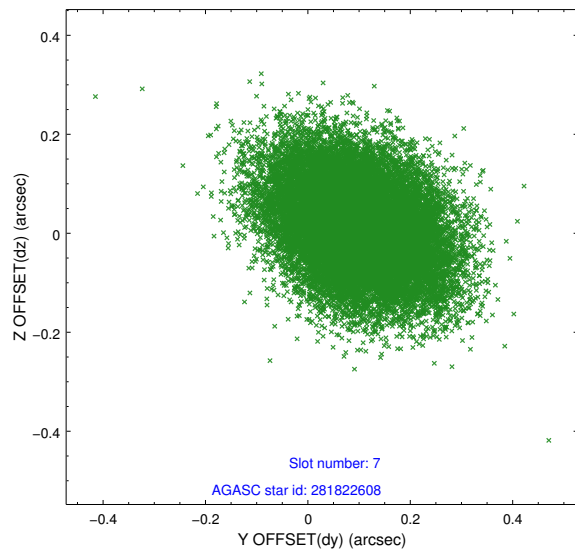
### 2.4.3 Slot 5



### 2.4.4 Slot 6

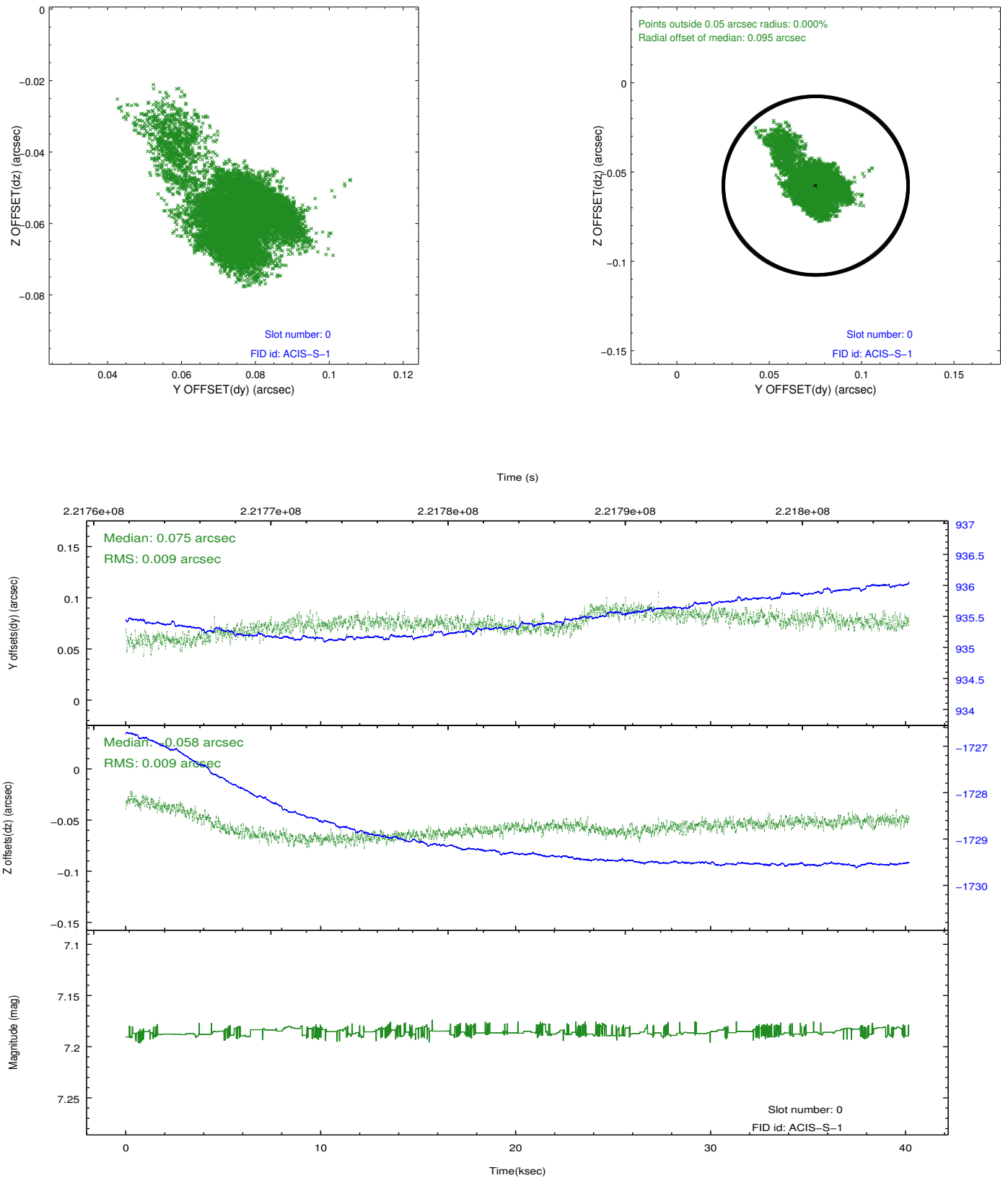


## 2.4.5 Slot 7

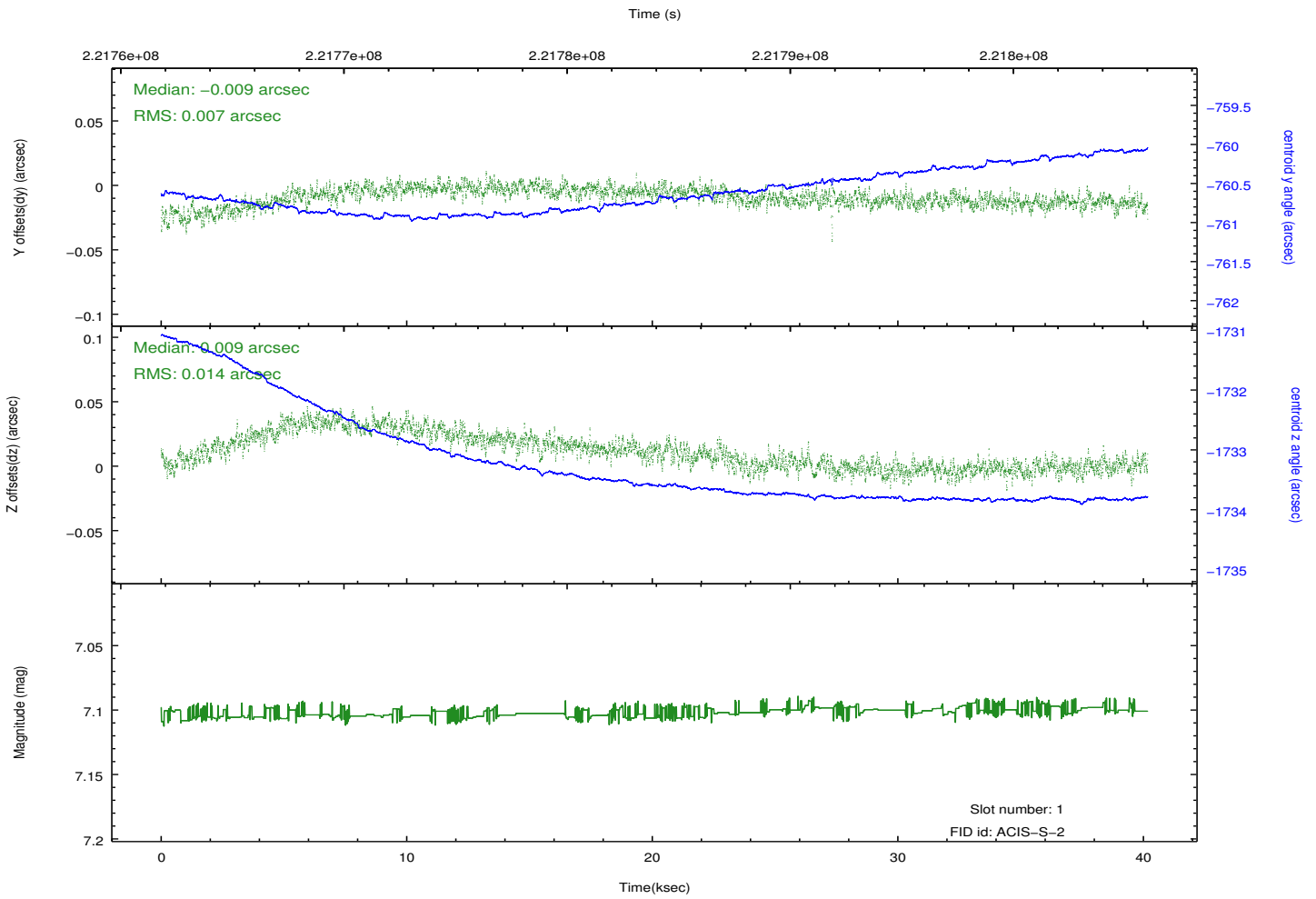
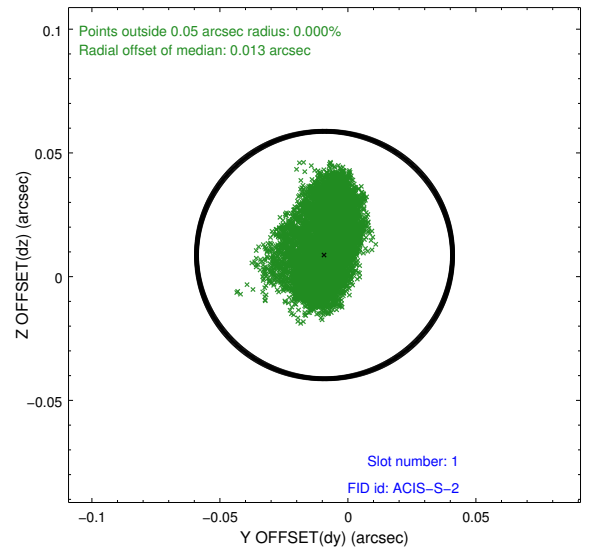
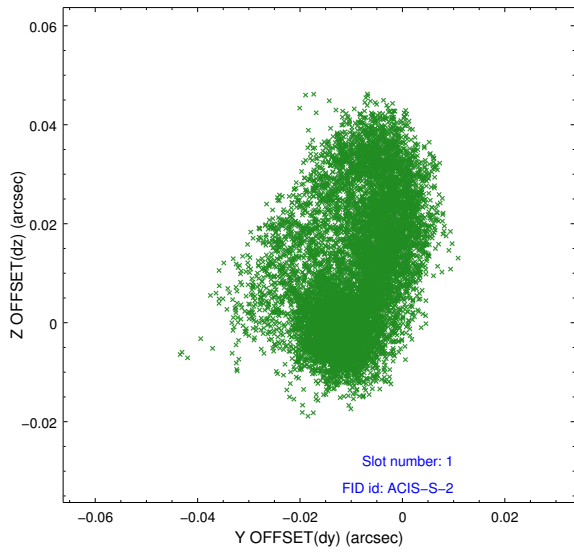


## 2.5 FID Slots

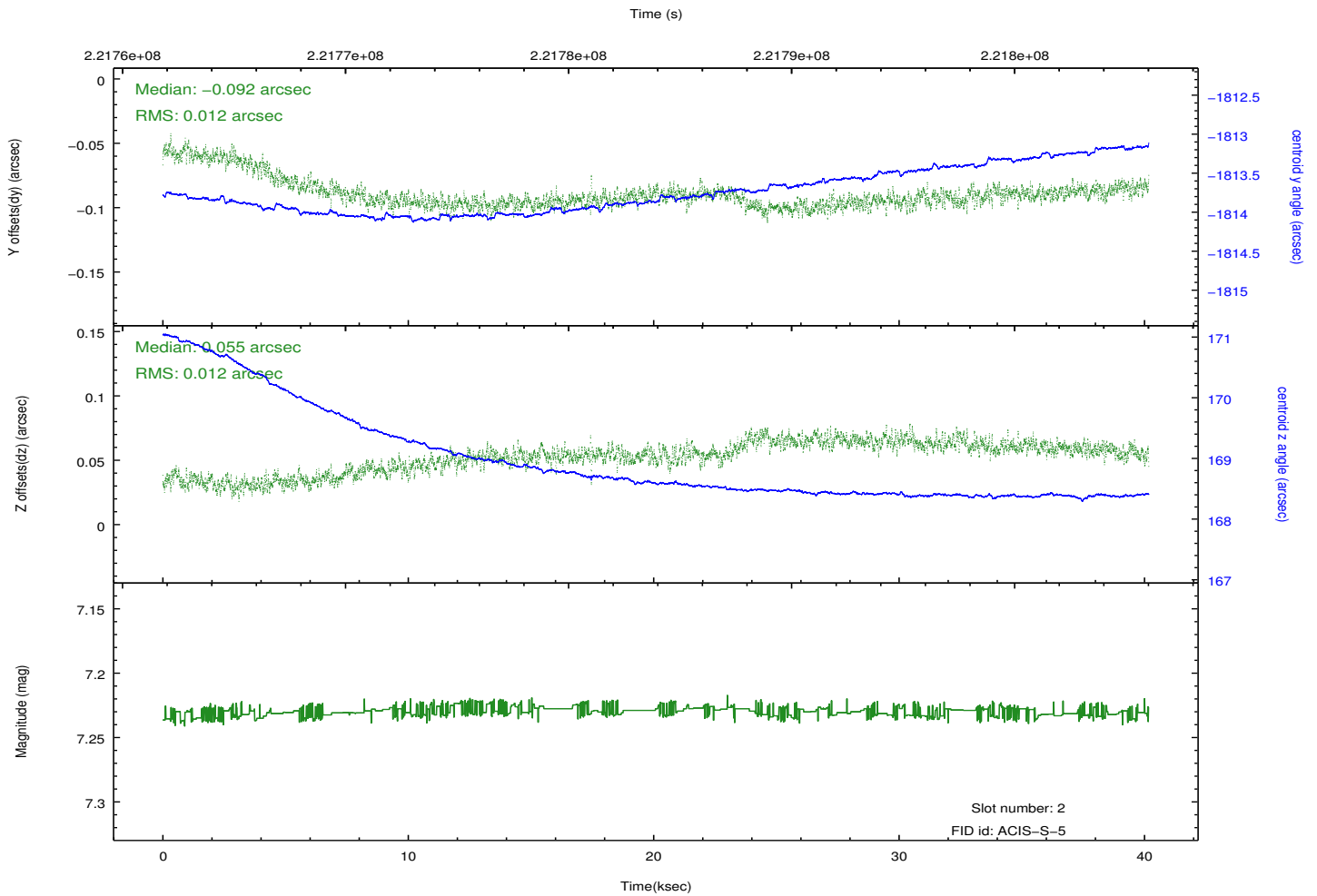
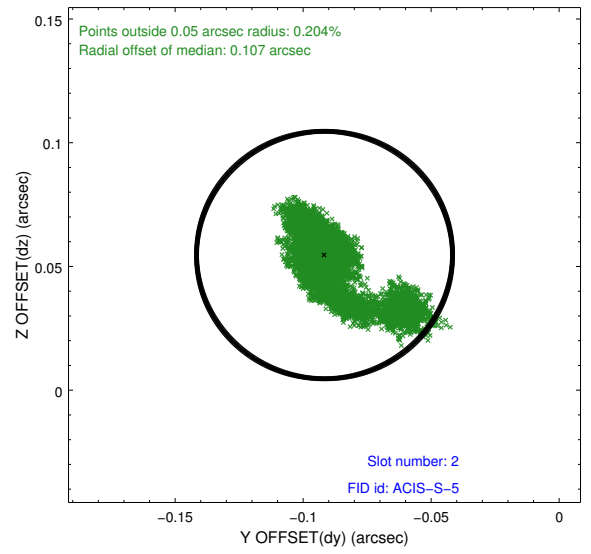
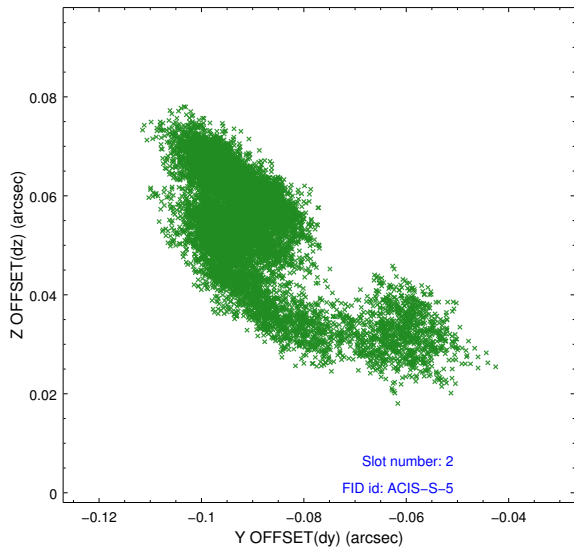
### 2.5.1 Slot 0



## 2.5.2 Slot 1



### 2.5.3 Slot 2



# A Summary

## A.1 Status

V&V Scientist	Jen Lauer
V&V Date (YYYY-MM-DD)	2013.01.08
V&V Edition	1
V&V Disposition and Status	OK
V&V Charge Time	39.75679

## A.2 Comments