

V&V Reference Report

L2 ASCDS Version : 8.4.5

Observation 4614 - L2 Version 3
Chandra X-Ray Center

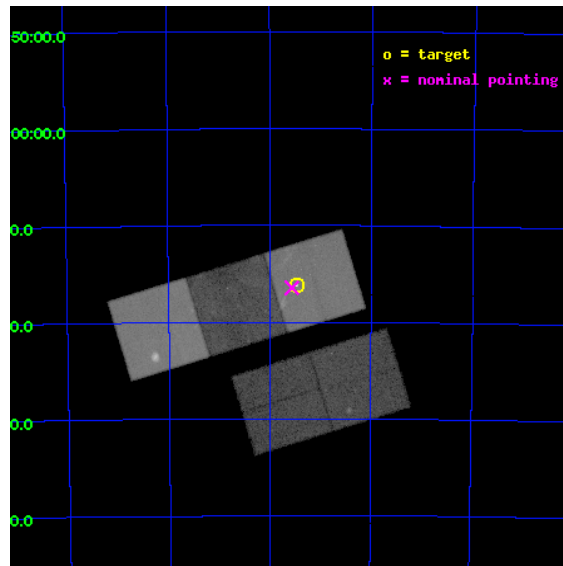
L2 Processing Date : Nov 10 2012

Contents

1	Front	2
2	OBI	3
2.1	OBI	3
2.1.1	Images	3
2.1.2	Bias	3
2.1.3	Parameters	4
2.1.4	Events	4
2.2	Compared Parameters	5
2.3	Aspect	6
2.4	Star Slots	9
2.4.1	Slot 3	9
2.4.2	Slot 4	10
2.4.3	Slot 5	11
2.4.4	Slot 6	12
2.4.5	Slot 7	13
2.5	FID Slots	14
2.5.1	Slot 0	14
2.5.2	Slot 1	15
2.5.3	Slot 2	16
A	Summary	17
A.1	Status	17
A.2	Comments	17

1 Front

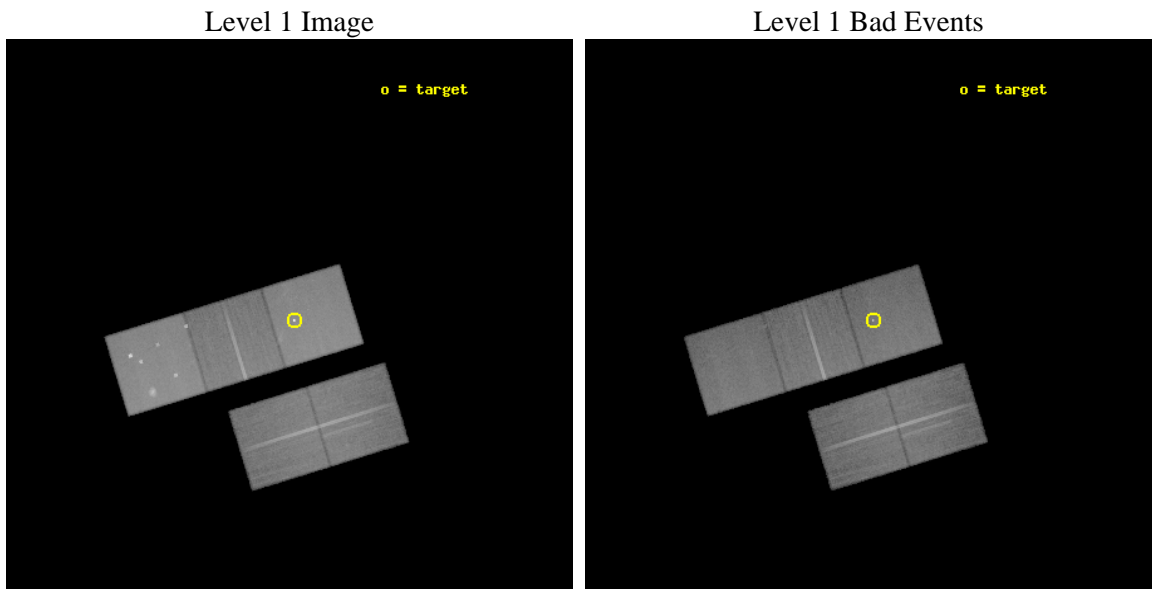
seq_num	500439	Sequence number
obs_id	4614	Observation id
title	Chandra AO5 Monitoring Observations of SN1987A	Proposal title
observer	Prof. David Burrows	Principal investigator
object	SNR1987A	Source name
dtycycle	0	
cycle	P	events from which exps? Prim/Second/Both
ra_targ	83.866667	Observer's specified target RA [deg]
dec_targ	-69.26975	Observer's specified target Dec [deg]
ra_nom	83.890988281303	Nominal RA [deg]
dec_nom	-69.274160215829	Nominal Dec [deg]
roll_nom	342.96768521227	Nominal Roll [deg]
revision	3	Processing version of data
ontime	47104.499909401	Sum of GTIs [s]
livetime	46489.044940256	Livetime [s]
ontime2	47104.499909401	Sum of GTIs [s]
ontime3	47104.499909401	Sum of GTIs [s]
ontime5	47104.499909401	Sum of GTIs [s]
ontime6	47104.499909401	Sum of GTIs [s]
ontime7	47104.499909401	Sum of GTIs [s]
l2events	529098	Number of level 2 events



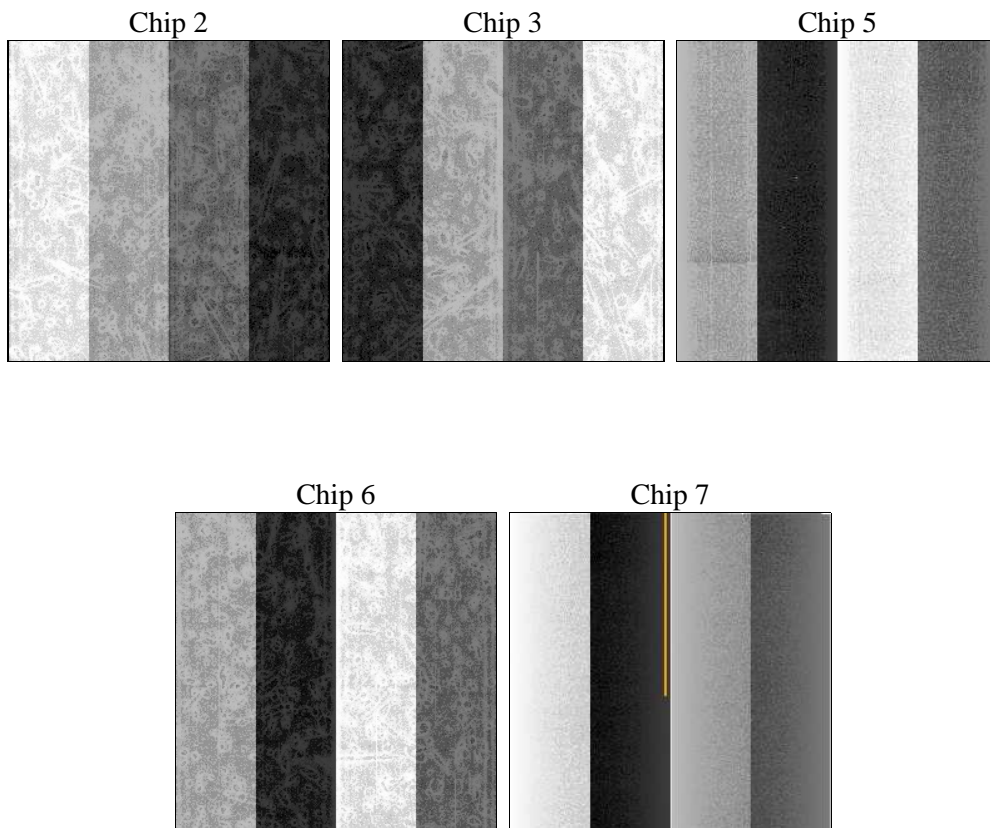
2 OBI

2.1 OBI

2.1.1 Images



2.1.2 Bias



2.1.3 Parameters

obi_num	0	Obi number	sched_exp_time	47000.000000	[s] Scheduled observation exposure time
ascdsver	8.4.5	Processing system revision	ontime	47104.499909401	Sum of GTIs [s]
caldbver	4.5.2	 	ontime2	47104.499909401	Sum of GTIs [s]
date	2012-11-10T03:17:25	Date and time of file creation	ontime3	47104.499909401	Sum of GTIs [s]
revision	3	Processing version of data	ontime5	47104.499909401	Sum of GTIs [s]
			ontime6	47104.499909401	Sum of GTIs [s]
			ontime7	47104.499909401	Sum of GTIs [s]
			l1events	1823316	Number of level 1 events

2.1.4 Events

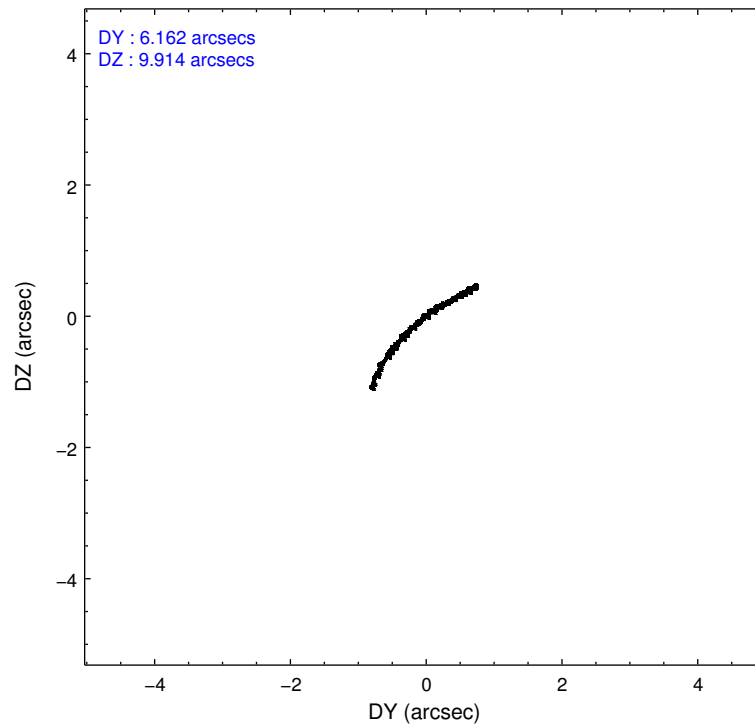
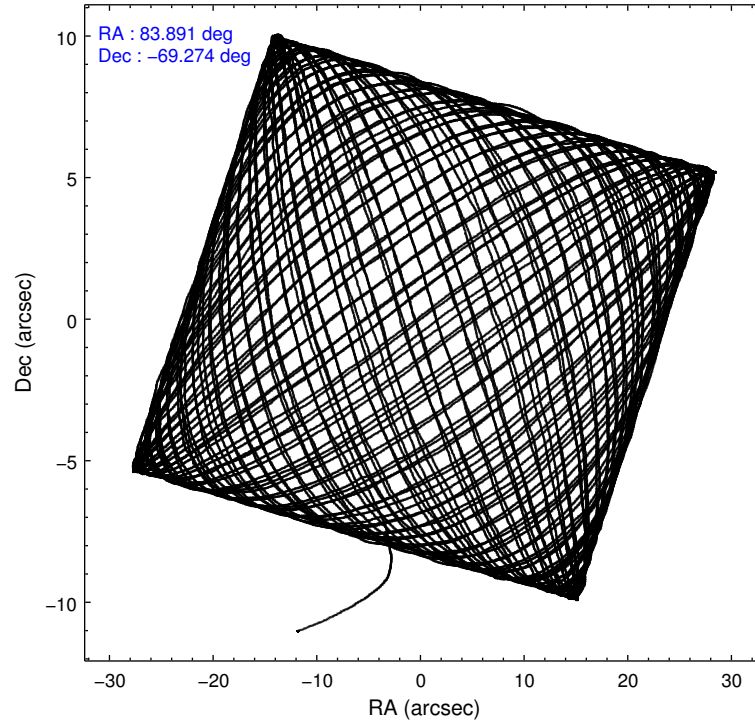
	ccd 2	ccd 3	ccd 5	ccd 6	ccd 7
level 1 events	289777	292377	486796	312497	441869
rejected events	249997	252516	243903	262415	241717
rejected %	86%	86%	50%	83%	54%

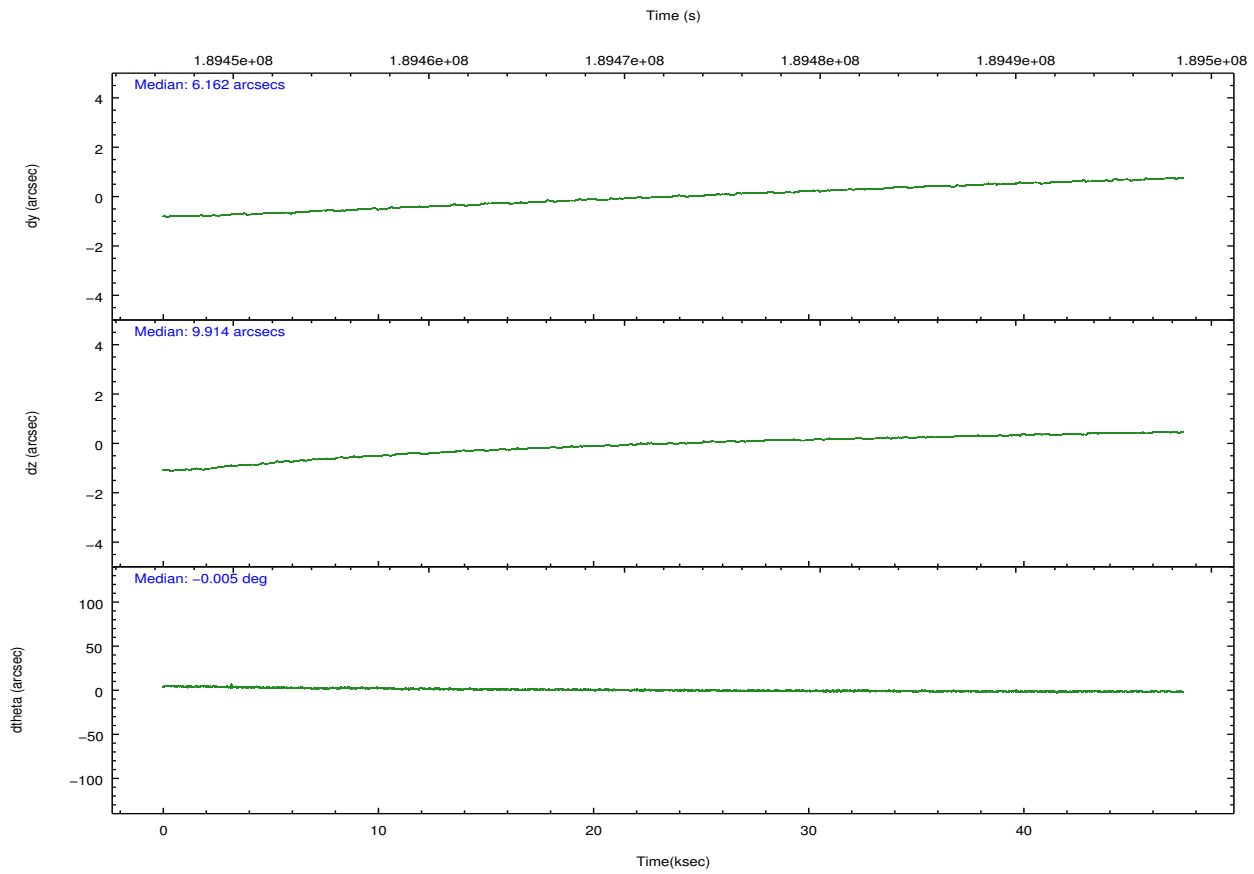
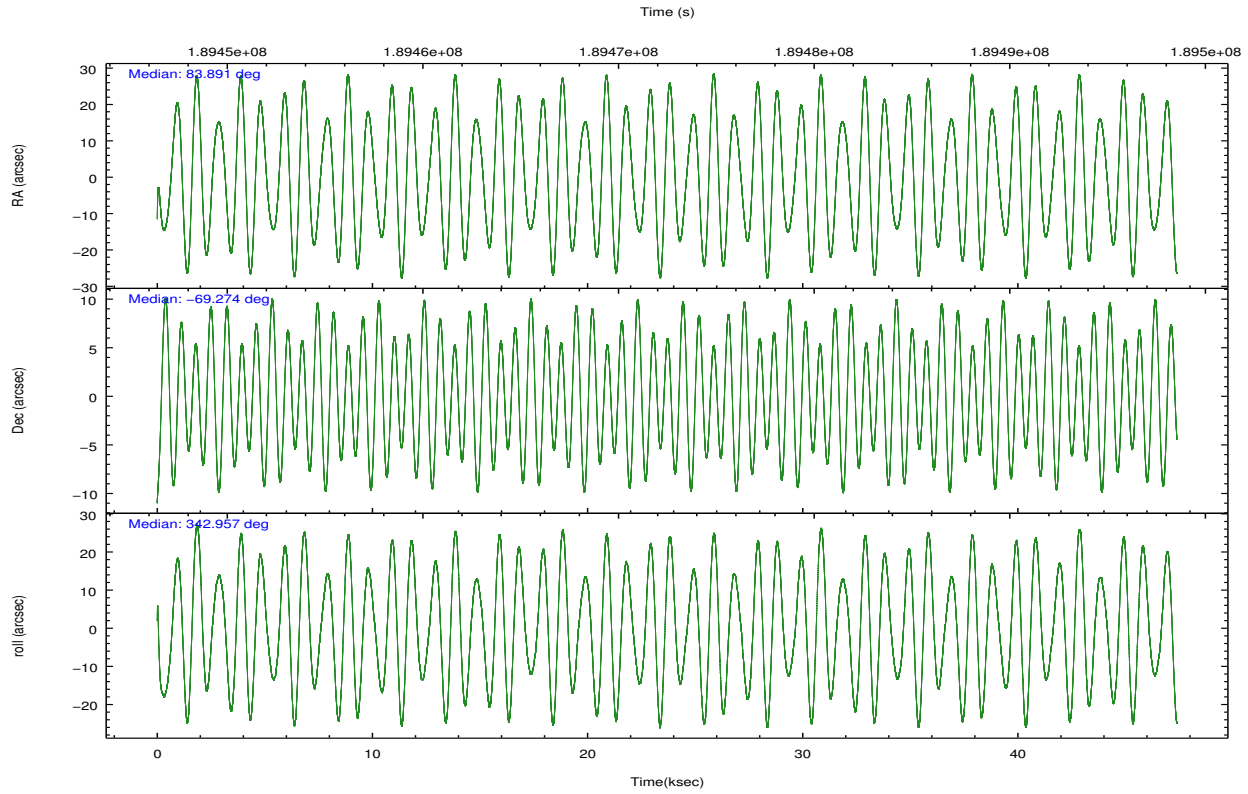
	ccd 2	ccd 3	ccd 5	ccd 6	ccd 7
grade 0 events	20003	19733	42644	26758	26180
	6%	6%	8%	8%	5%
grade 1 events	158	193	732	187	684
	0%	0%	0%	0%	0%
grade 2 events	7341	6912	69730	8302	41833
	2%	2%	14%	2%	9%
grade 3 events	3318	3606	10805	3745	18926
	1%	1%	2%	1%	4%
grade 4 events	3342	3619	10683	3797	18693
	1%	1%	2%	1%	4%
grade 5 events	11510	13316	33708	13908	40043
	3%	4%	6%	4%	9%
grade 6 events	5785	5998	109085	7484	94554
	1%	2%	22%	2%	21%
grade 7 events	238320	239000	209409	248316	200956
	82%	81%	43%	79%	45%

2.2 Compared Parameters

Parameter	Planned	Actual	Parameter	Planned	Actual
Instrument	ACIS	ACIS	Obspar format version number	7	7
Detector	ACIS-23567	ACIS-23567	Obspar file type	PREDICTED	ACTUAL
Grating	NONE	NONE	Obspar update status	NONE	UPDATED
Data mode	FAINT	FAINT	Number of optional ACIS chips dropped	0	0
Observation mode	POINTING	POINTING	On-chip summing requested	N	N
[deg] Pointing RA	83.816206	83.89098828130298	Subarray requested	NONE	NONE
[deg] Pointing Dec	-69.280608	-69.27416021582907	Alternating exposures requested	N	N
[deg] Pointing Roll	342.741111	342.967685212272	[s] Primary exposure time	0.000000	3.1
[mm] SIM focus pos	-0.684267	-0.6828225247311905			
[mm] SIM defocus	0	0.001444936568705701			
[mm] SIM translation stage pos	-190.132523	-190.1400660498719			
[mm] SIM translation stage offset	0	0.00754346686406393			
[s] Observation start time (MET)	189449175.184000	189448109.57929			
Observation start date	2004-01-02T16:45:11	2004-01-02T16:28:29			
[s] Observation end time (MET)	189496175.184000	189496770.94391			
Observation end date	2004-01-03T05:48:31	2004-01-03T05:59:30			
Read mode	TIMED	TIMED			

2.3 Aspect





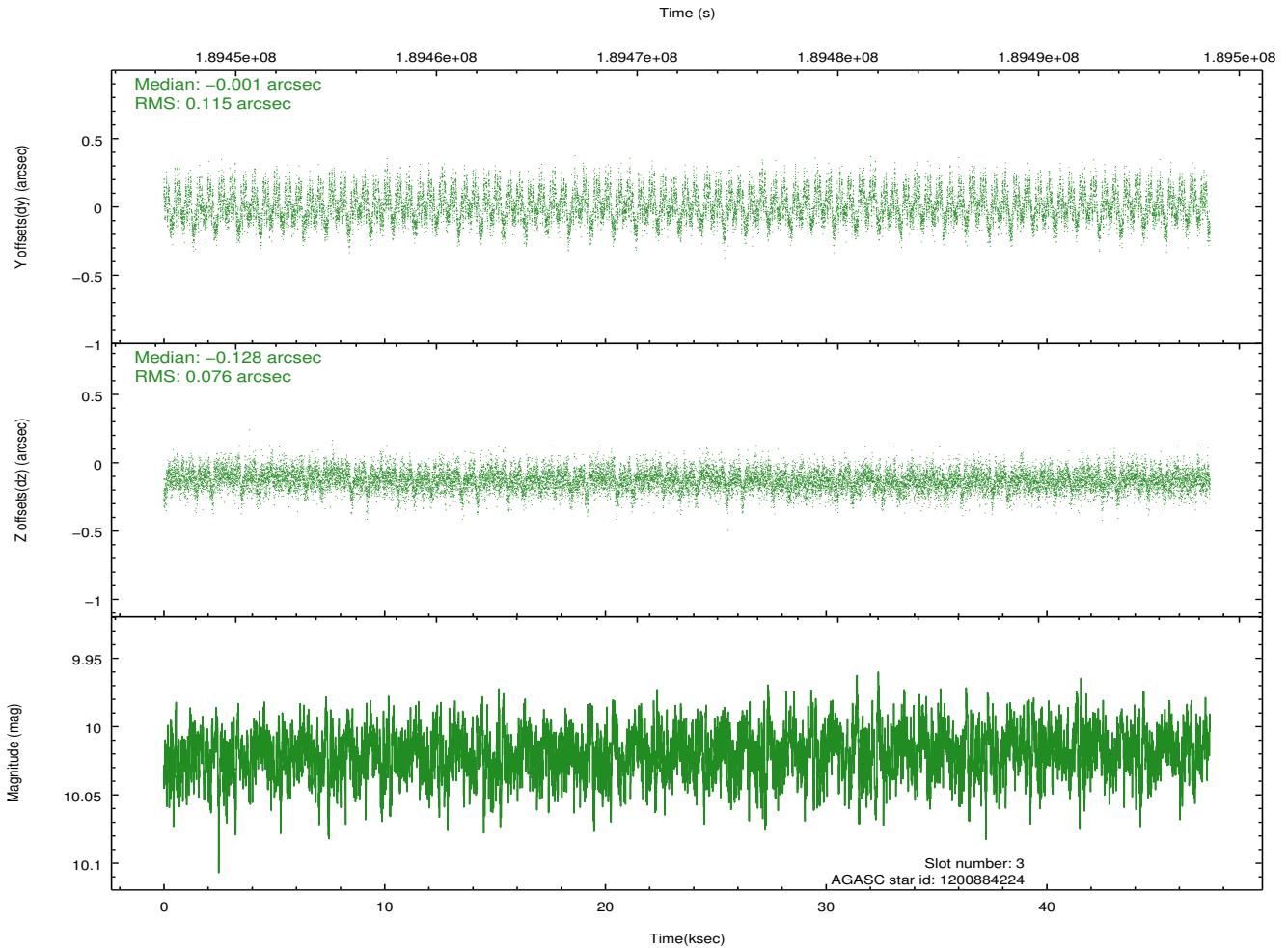
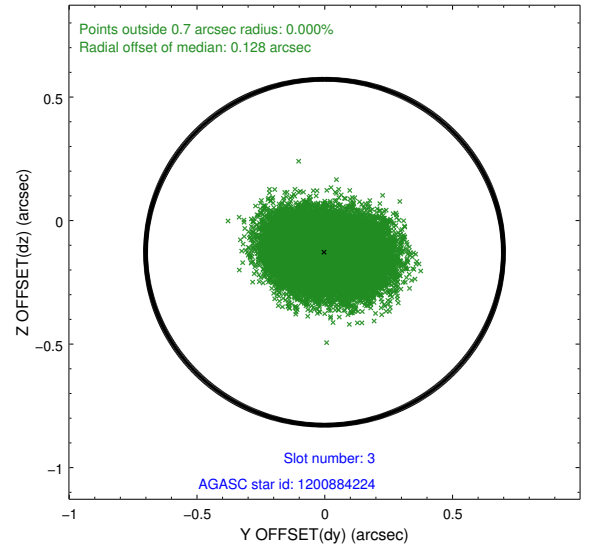
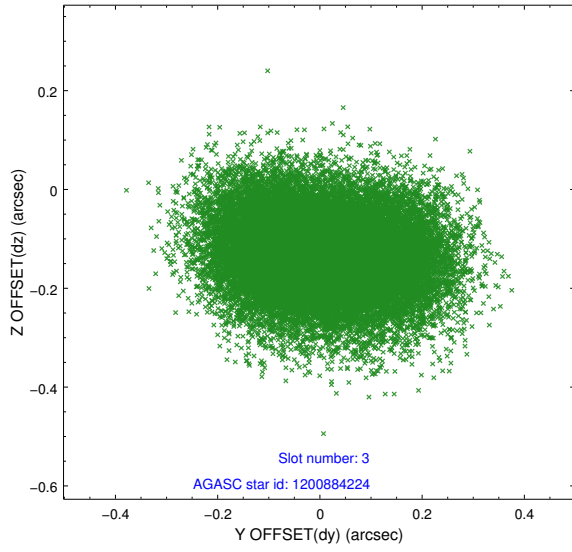
Slot Statistics

slot	status	id	mag	n_pts	med_dy	med_dz	dr1	dr2	ra	dec	mean_y	mean_z
0	FID	ACIS-S-1	7.18	11561	0.014	-0.011	0.026	0.048	0.000000	0.000000	937.16	-1726.70
1	FID	ACIS-S-5	7.23	11561	-0.054	0.008	0.011	0.042	0.000000	0.000000	-1811.90	170.92
2	FID	ACIS-S-6	7.35	11559	0.023	0.018	0.028	0.040	0.000000	0.000000	402.76	814.86
3	GUIDE	1200884224	10.02	23095	-0.001	-0.128	0.148	0.236	83.314443	-68.577335	-1380.67	2219.46
4	GUIDE	1200885760	9.48	23106	0.019	-0.019	0.093	0.151	83.723637	-68.777667	-652.47	1693.45
5	GUIDE	1201019200	9.47	23106	0.020	-0.044	0.109	0.175	84.213591	-68.777384	-42.59	1882.44
6	GUIDE	1201410616	9.34	23111	0.016	0.135	0.120	0.193	82.516808	-69.784406	-999.80	-2227.60
7	GUIDE	1201542672	8.20	23115	-0.056	0.070	0.080	0.127	84.492488	-69.957531	1521.73	-2082.79

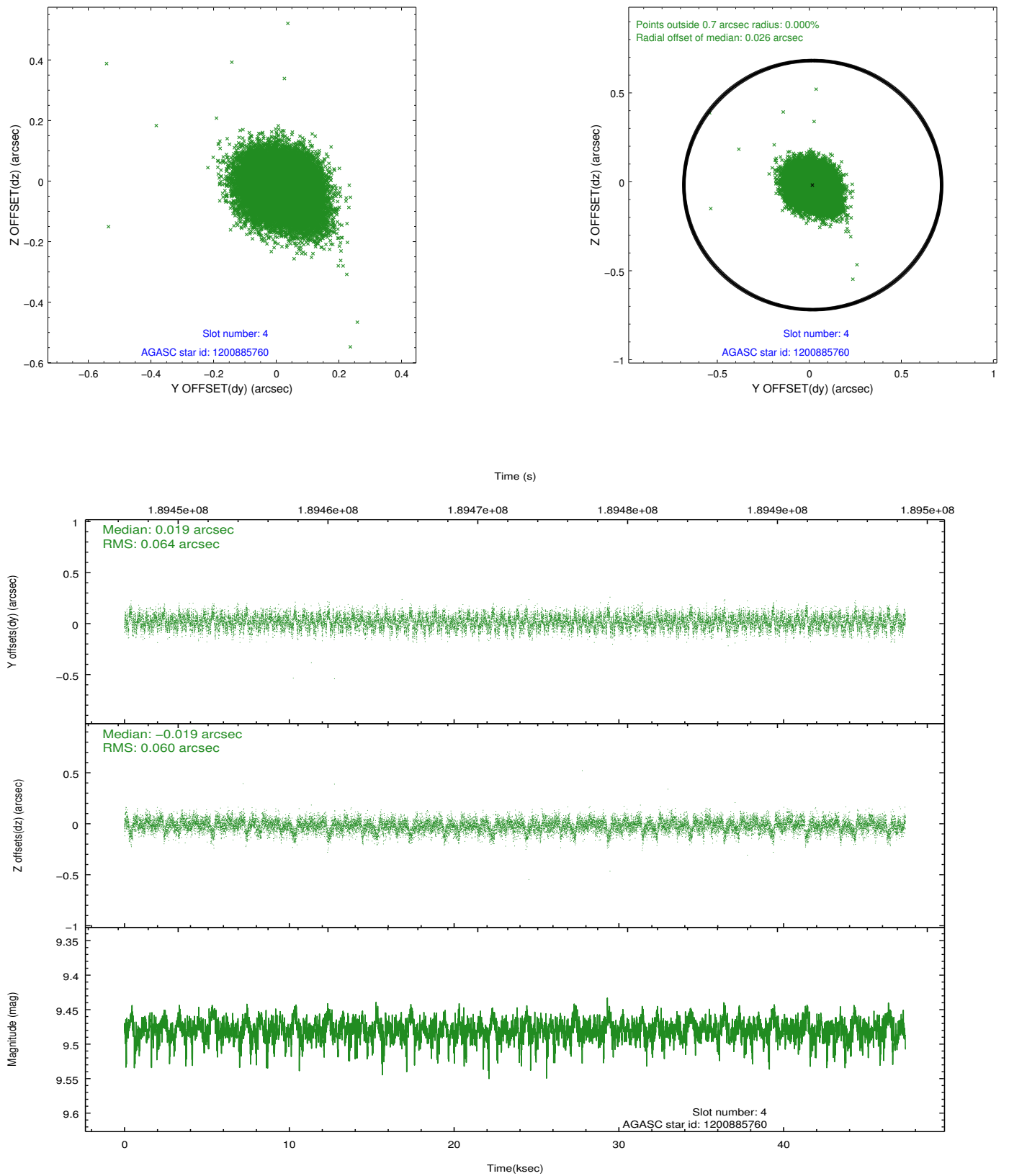
∞

2.4 Star Slots

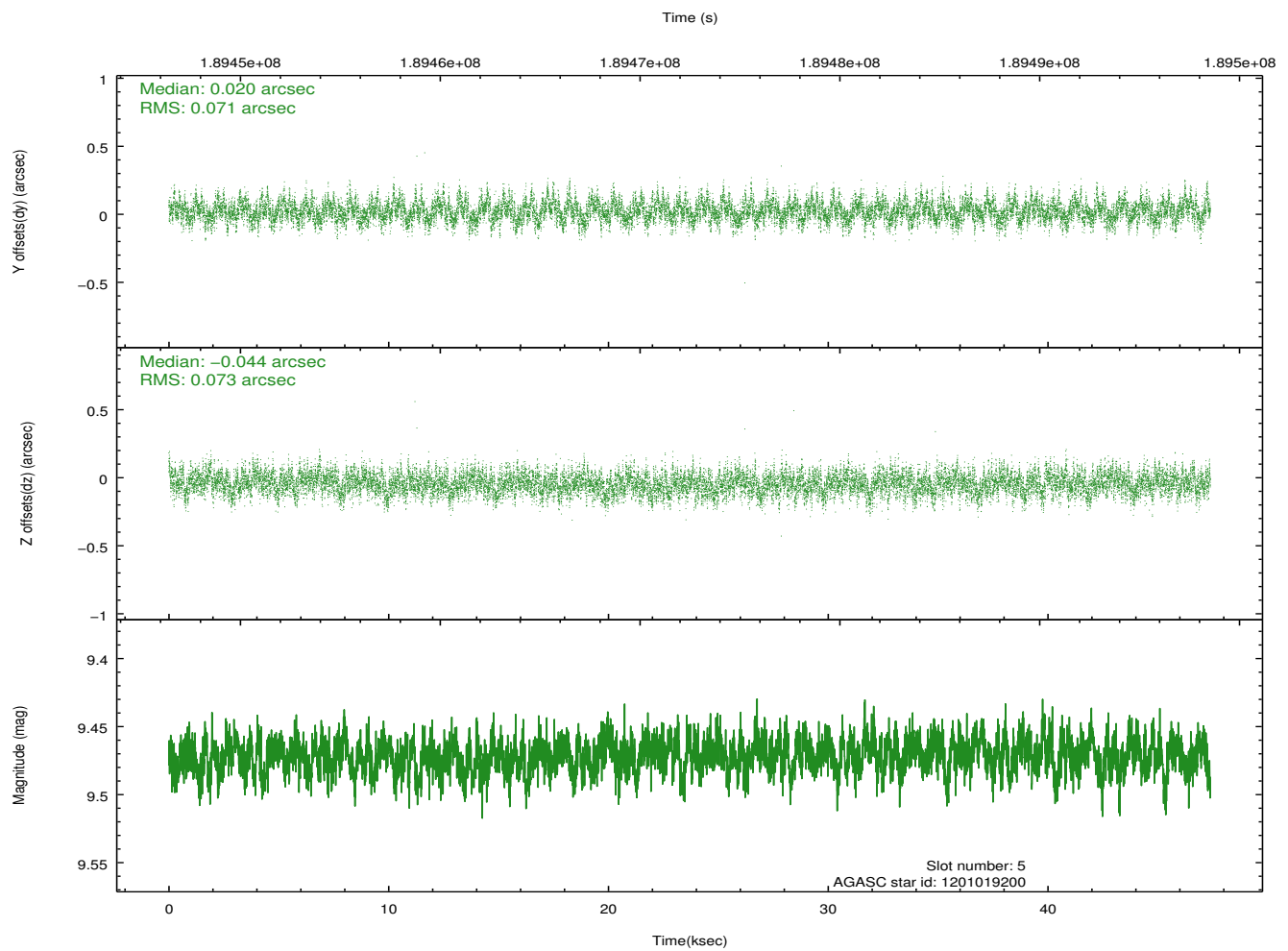
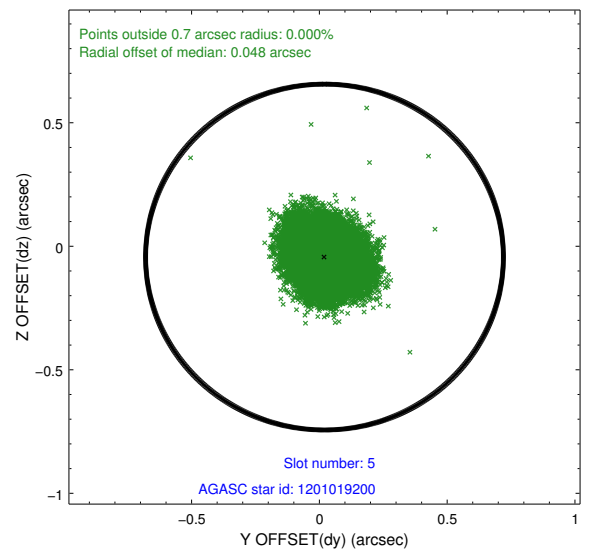
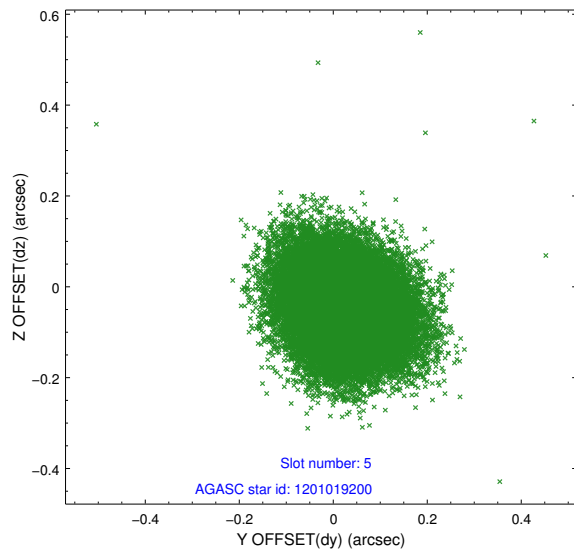
2.4.1 Slot 3



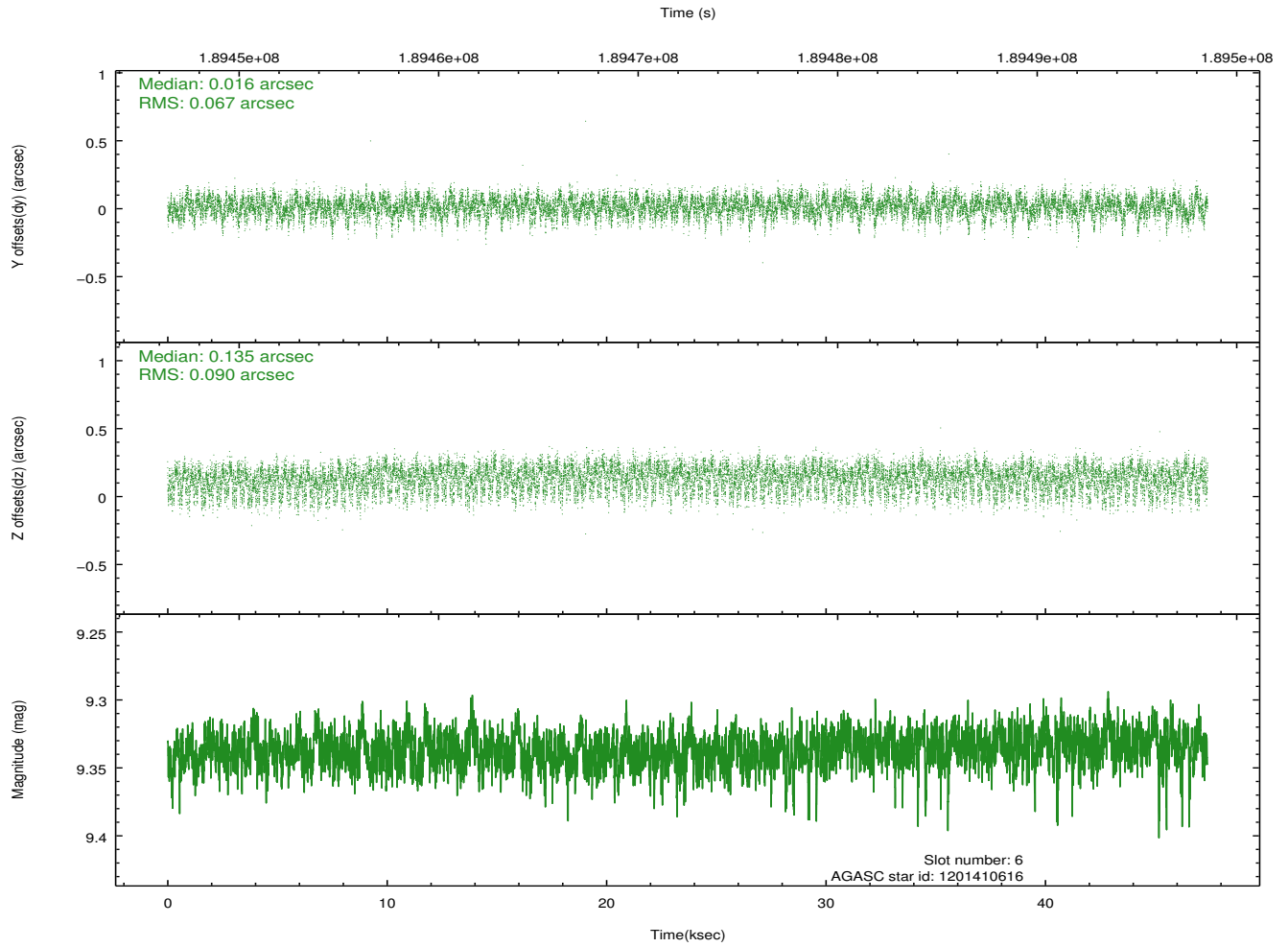
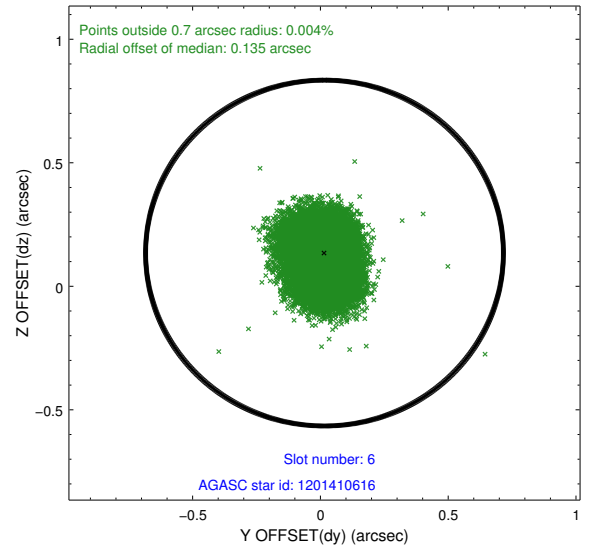
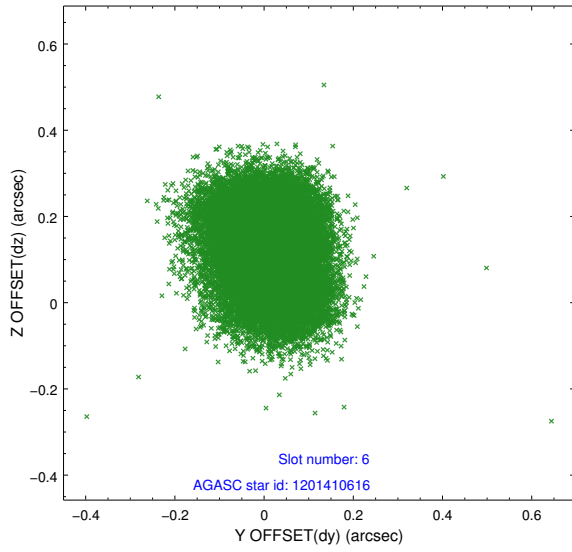
2.4.2 Slot 4



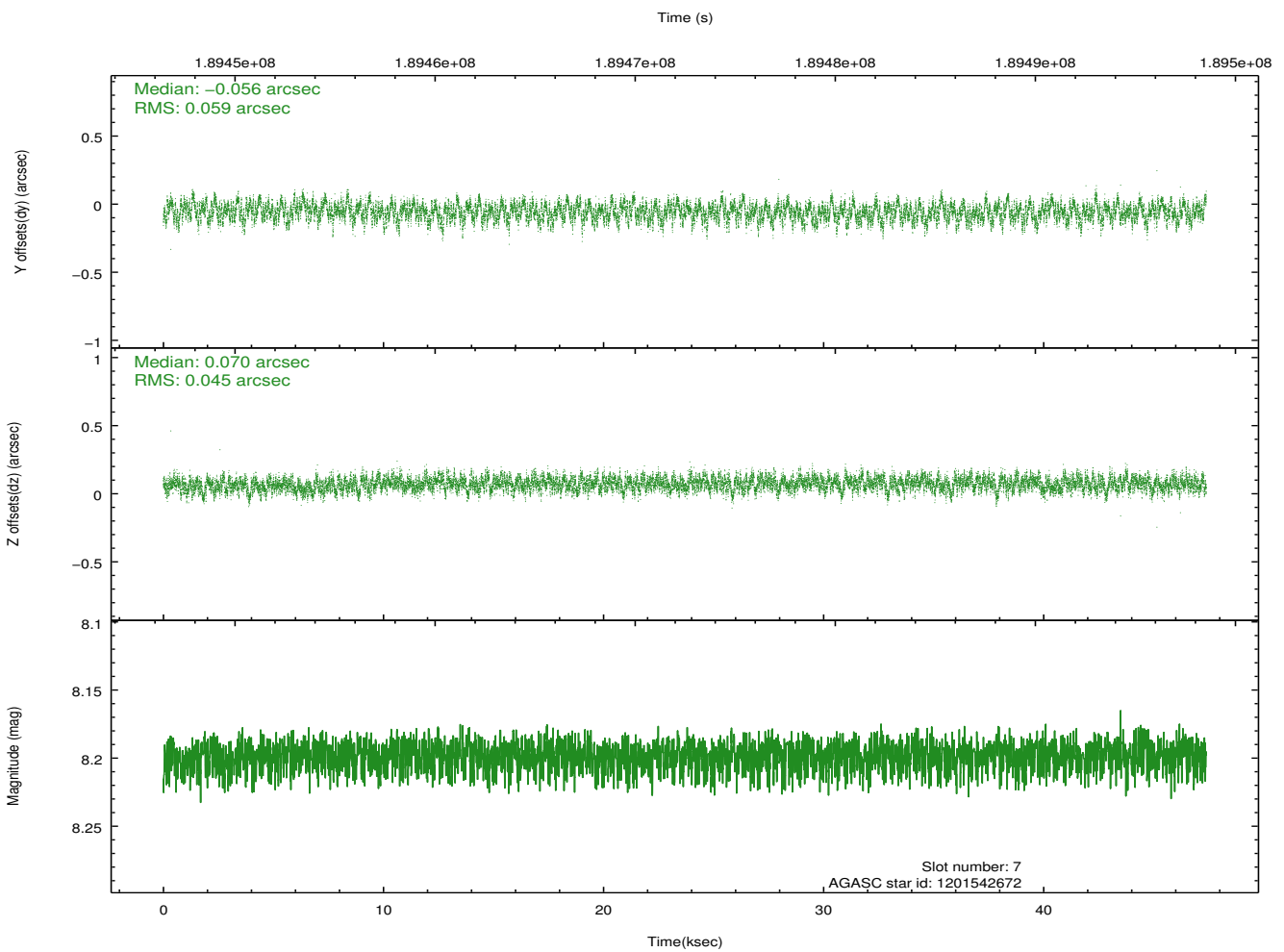
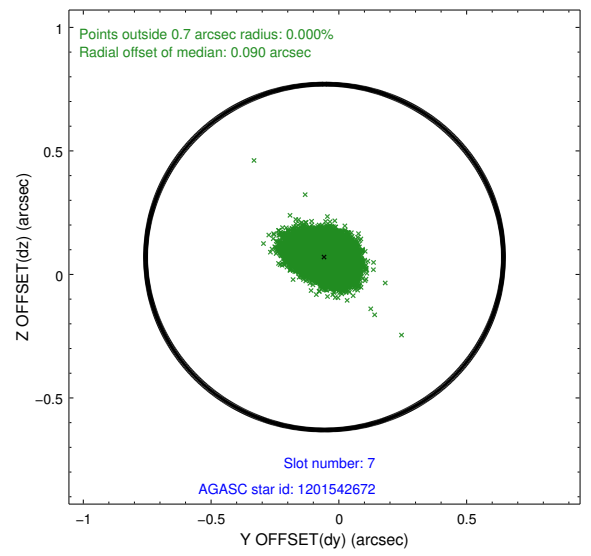
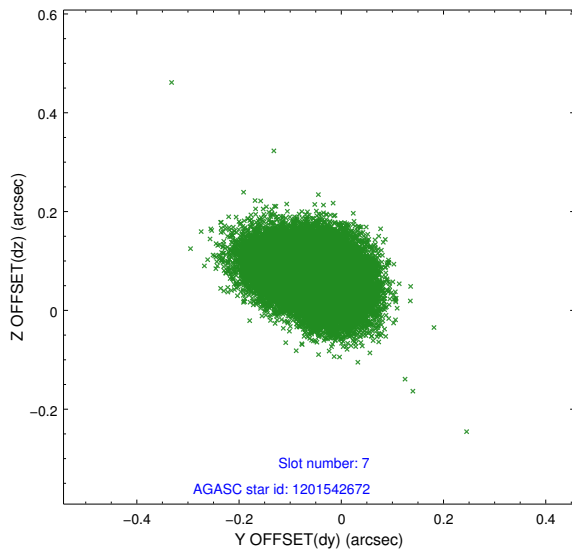
2.4.3 Slot 5



2.4.4 Slot 6

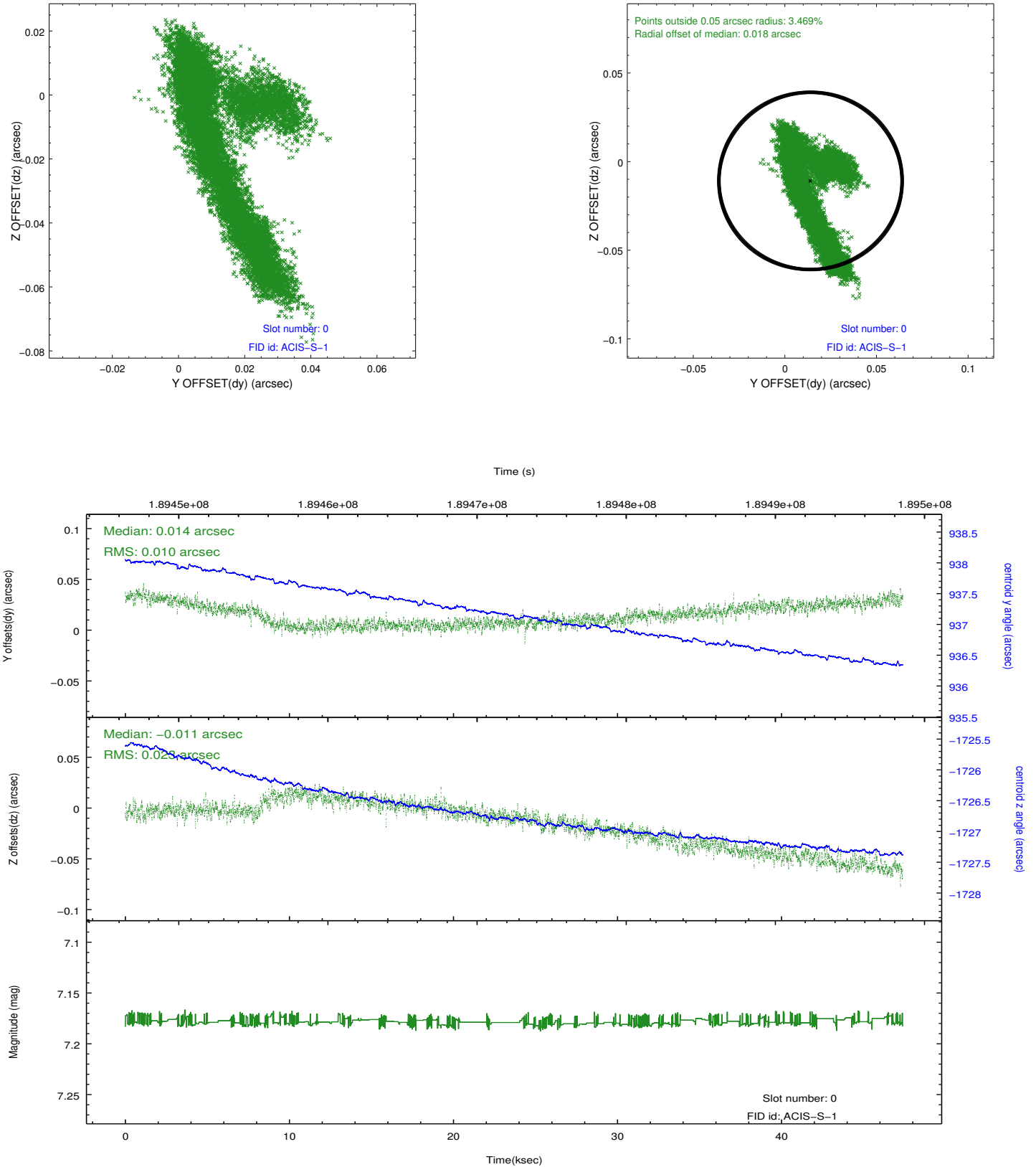


2.4.5 Slot 7

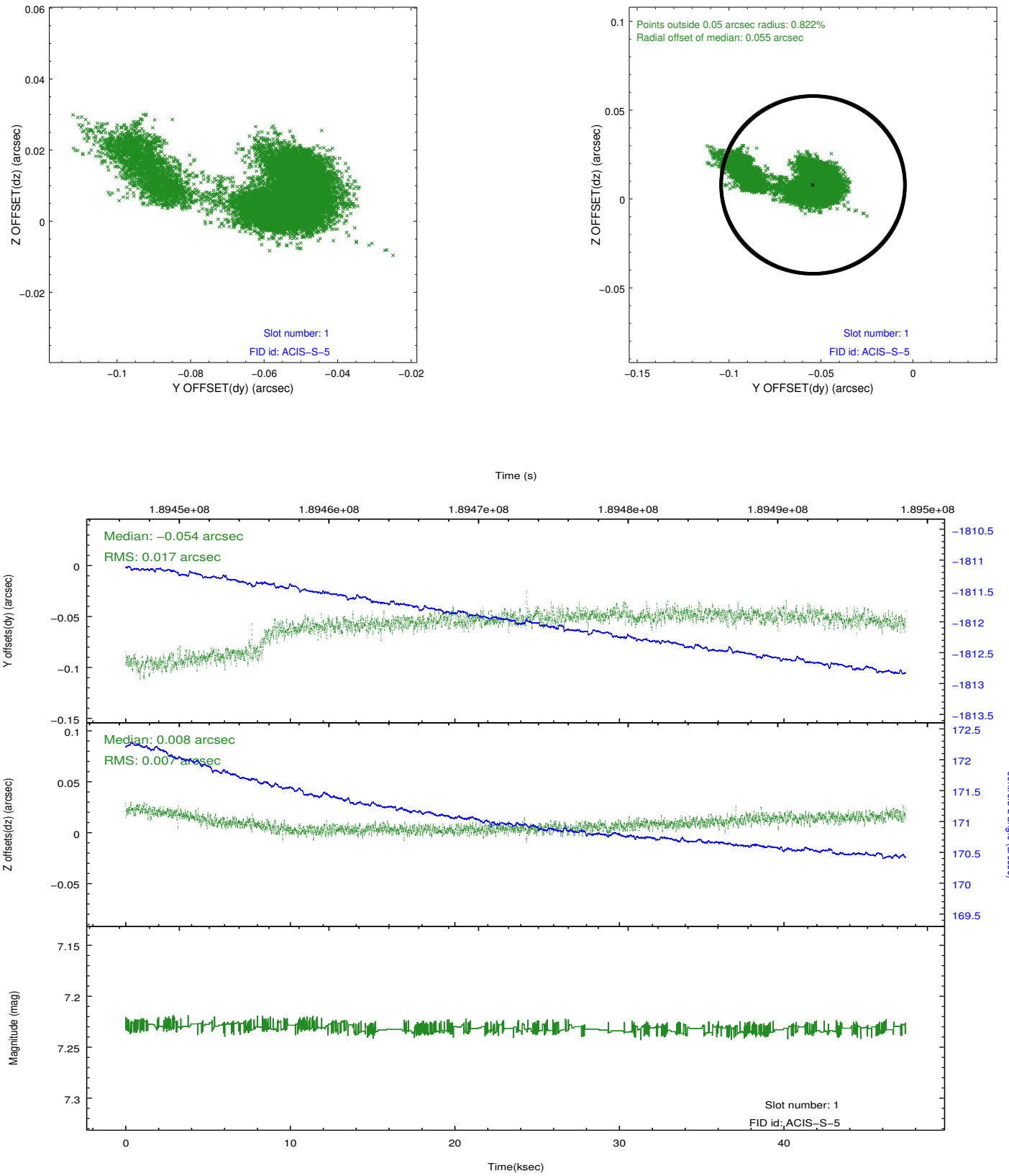


2.5 FID Slots

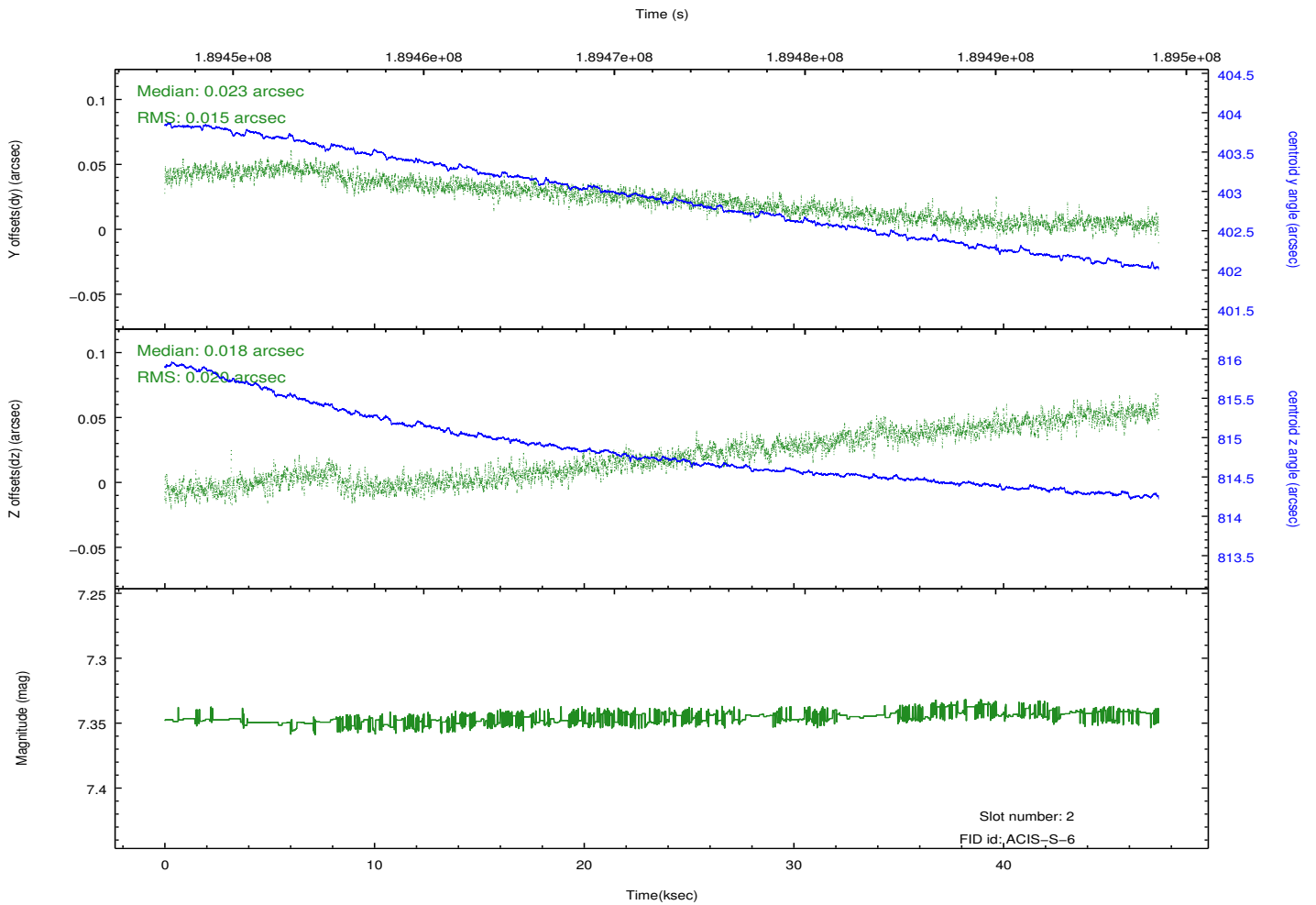
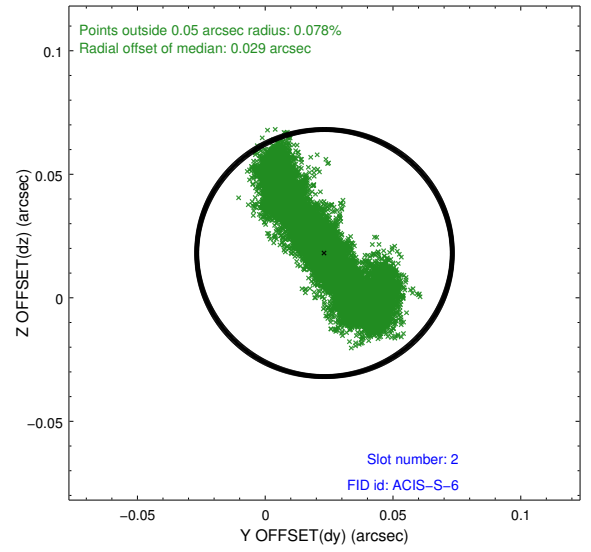
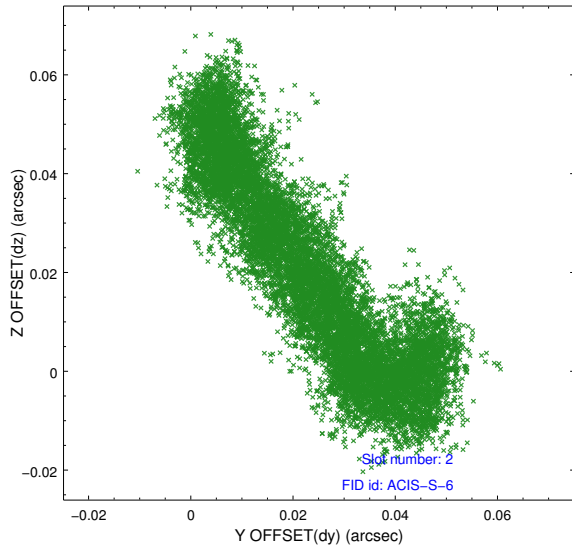
2.5.1 Slot 0



2.5.2 Slot 1



2.5.3 Slot 2



A Summary

A.1 Status

V&V Scientist	Jen Lauer
V&V Date (YYYY-MM-DD)	2012.12.04
V&V Edition	1
V&V Disposition and Status	OK
V&V Charge Time	47.107

A.2 Comments

Window preference met.