

V&V Reference Report

L2 ASCDS Version : 8.5

Observation 4644 - L2 Version 4
Chandra X-Ray Center

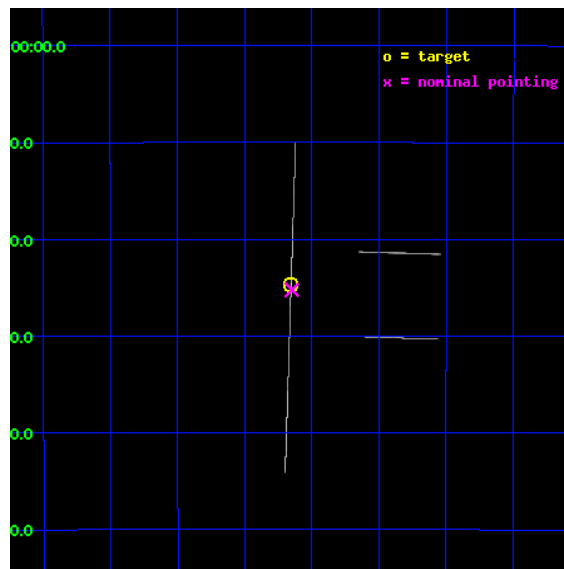
L2 Processing Date : Dec 9 2012

Contents

1	Front	2
2	OBI	3
2.1	OBI	3
2.1.1	Images	3
2.1.2	Bias	3
2.1.3	Parameters	4
2.1.4	Events	4
2.2	Compared Parameters	5
2.3	Aspect	6
2.4	Star Slots	9
2.4.1	Slot 3	9
2.4.2	Slot 4	10
2.4.3	Slot 5	11
2.4.4	Slot 6	12
2.4.5	Slot 7	13
2.5	FID Slots	14
2.5.1	Slot 0	14
2.5.2	Slot 1	15
2.5.3	Slot 2	16
A	Summary	17
A.1	Status	17
A.2	Comments	17

1 Front

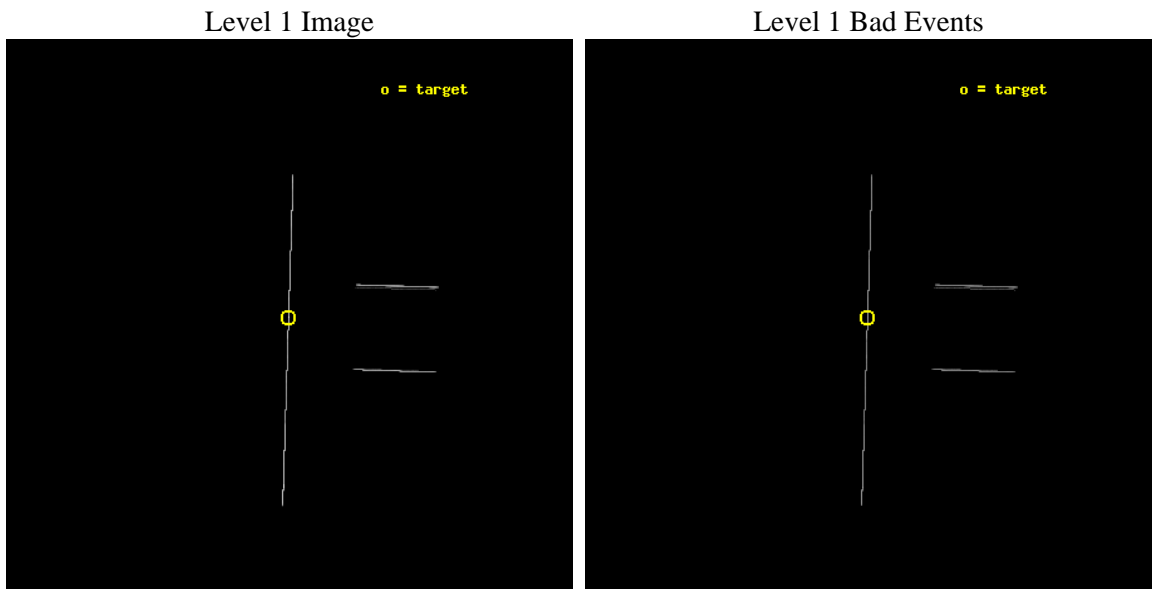
seq_num	500463	Sequence number
obs_id	4644	Observation id
title	ToO Observations of Soft Gamma Repeaters	Proposal title
observer	Dr. Peter Woods	Principal investigator
object	SGR 1806-20	Source name
ra_targ	272.16375	Observer's specified target RA [deg]
dec_targ	-20.410972	Observer's specified target Dec [deg]
ra_nom	272.16225461877	Nominal RA [deg]
dec_nom	-20.420542573757	Nominal Dec [deg]
roll_nom	271.78389418939	Nominal Roll [deg]
revision	4	Processing version of data
ontime	35160.5	Sum of GTIs [s]
livetime	35023.154296875	Livetime [s]
ontime2	35160.5	Sum of GTIs [s]
ontime3	35160.5	Sum of GTIs [s]
ontime5	35160.5	Sum of GTIs [s]
ontime6	35160.5	Sum of GTIs [s]
ontime7	35160.5	Sum of GTIs [s]
ontime8	35160.5	Sum of GTIs [s]
l2events	536364	Number of level 2 events



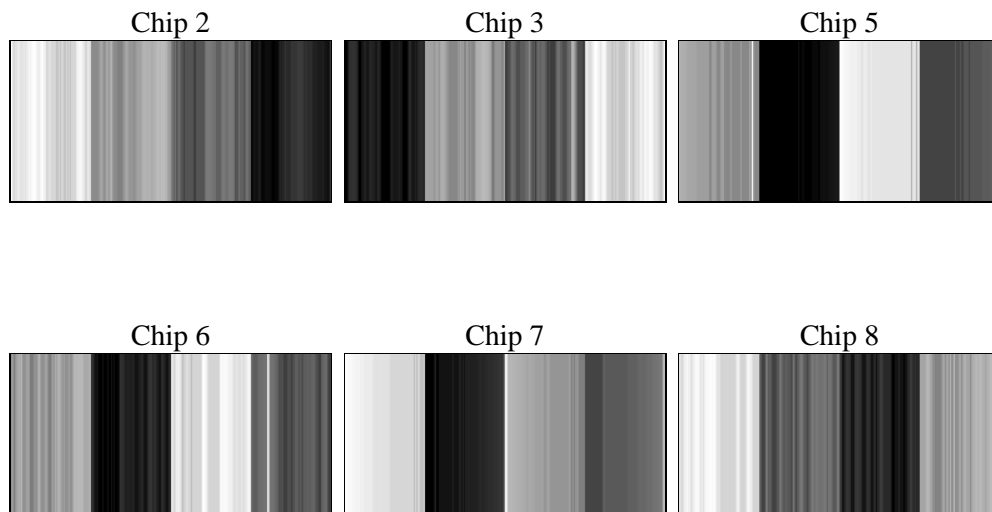
2 OBI

2.1 OBI

2.1.1 Images



2.1.2 Bias



2.1.3 Parameters

obi_num	0	Obi number	sched_exp_time	35000.000000	[s] Scheduled observation exposure time
ascdsver	8.5	Processing system revision	ontime	35160.5	Sum of GTIs [s]
caldbver	4.5.4	 	ontime2	35160.5	Sum of GTIs [s]
date	2012-12-09T20:35:42	Date and time of file creation	ontime3	35160.5	Sum of GTIs [s]
revision	4	Processing version of data	ontime5	35160.5	Sum of GTIs [s]
			ontime6	35160.5	Sum of GTIs [s]
			ontime7	35160.5	Sum of GTIs [s]
			ontime8	35160.5	Sum of GTIs [s]
			l1events	801214	Number of level 1 events

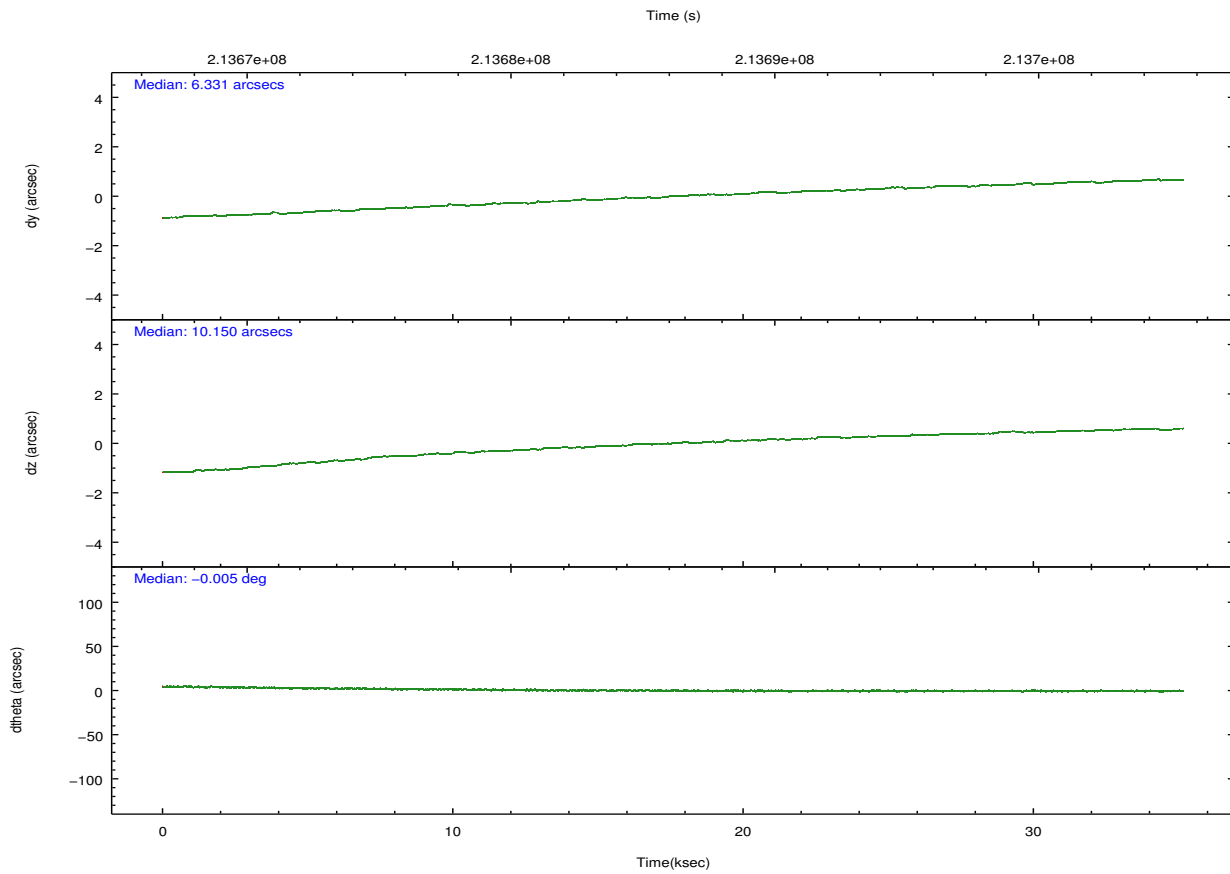
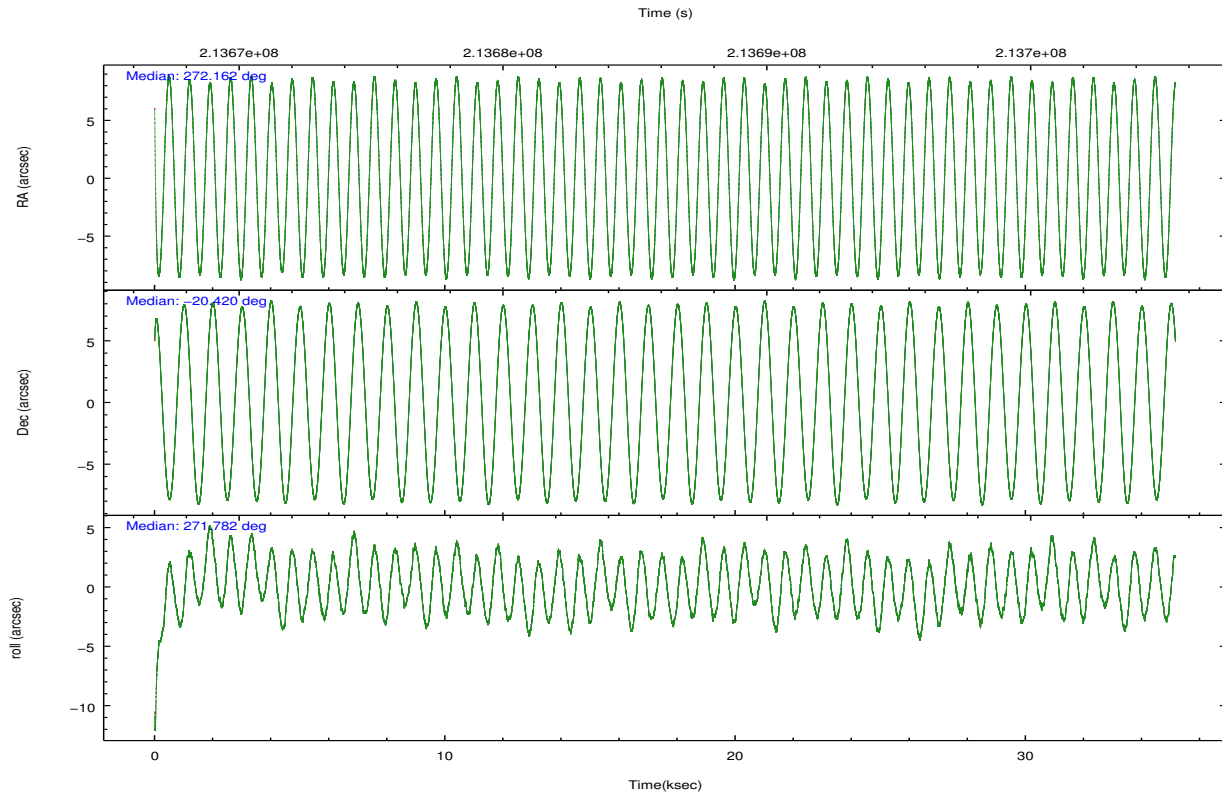
2.1.4 Events

	ccd 2	ccd 3	ccd 5	ccd 6	ccd 7	ccd 8		ccd 2	ccd 3	ccd 5	ccd 6	ccd 7	ccd 8
level 1 events	60002	62515	272246	64642	223781	118028	grade 0 events	7784	7062	53164	6355	21084	19195
rejected events	12522	13182	32567	13992	36173	19069		12%	11%	19%	9%	9%	16%
rejected %	20%	21%	11%	21%	16%	16%	grade 1 events	288	265	434	250	532	375
								0%	0%	0%	0%	0%	0%
							grade 2 events	18400	19184	69689	20742	47904	32259
								30%	30%	25%	32%	21%	27%
							grade 3 events	6152	7224	5578	6250	15190	11464
								10%	11%	2%	9%	6%	9%
							grade 4 events	6372	6296	5289	5941	14893	11042
								10%	10%	1%	9%	6%	9%
							grade 5 events	11052	11705	26240	12467	31758	16300
								18%	18%	9%	19%	14%	13%
							grade 6 events	9954	10779	111852	12637	92420	27393
								16%	17%	41%	19%	41%	23%
							grade 7 events	0	0	0	0	0	0
								0%	0%	0%	0%	0%	0%

2.2 Compared Parameters

Parameter	Planned	Actual	Parameter	Planned	Actual
Instrument	ACIS	ACIS	Obspar format version number	7	7
Detector	ACIS-235678	ACIS-235678	Obspar file type	PREDICTED	ACTUAL
Grating	NONE	NONE	Obspar update status	NONE	UPDATED
Data mode	CC33_FAINT	CC33_FAINT	Number of optional ACIS chips dropped	0	0
Observation mode	POINTING	POINTING	On-chip summing requested	N	N
[deg] Pointing RA	272.146626	272.1622546187699	Subarray requested	NONE	NONE
[deg] Pointing Dec	-20.397589	-20.42054257375737	Alternating exposures requested	N	N
[deg] Pointing Roll	271.621823	271.7838941893934	[s] Primary exposure time	0.000000	0
[mm] SIM focus pos	-0.684267	-0.6828225247311905			
[mm] SIM defocus	0	0.001444936568705701			
[mm] SIM translation stage pos	-190.132523	-190.1400660498719			
[mm] SIM translation stage offset	0	0.00754346686406393			
[s] Observation start time (MET)	213668732.184000	213667684.46119			
Observation start date	2004-10-09T00:24:28	2004-10-09T00:08:04			
[s] Observation end time (MET)	213703732.184000	213704493.23783			
Observation end date	2004-10-09T10:07:48	2004-10-09T10:21:33			
Read mode	CONTINUOUS	CONTINUOUS			

2.3 Aspect

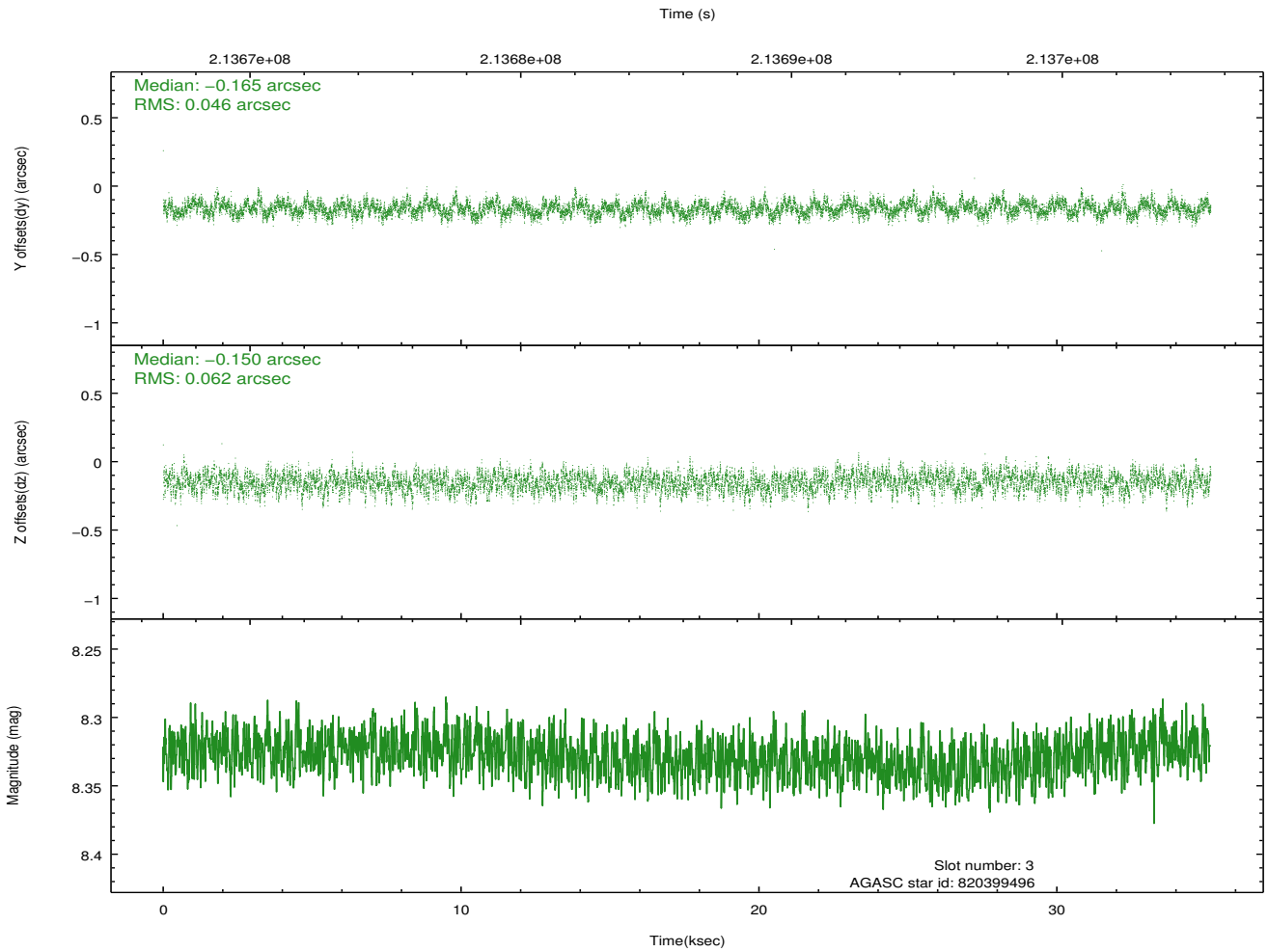
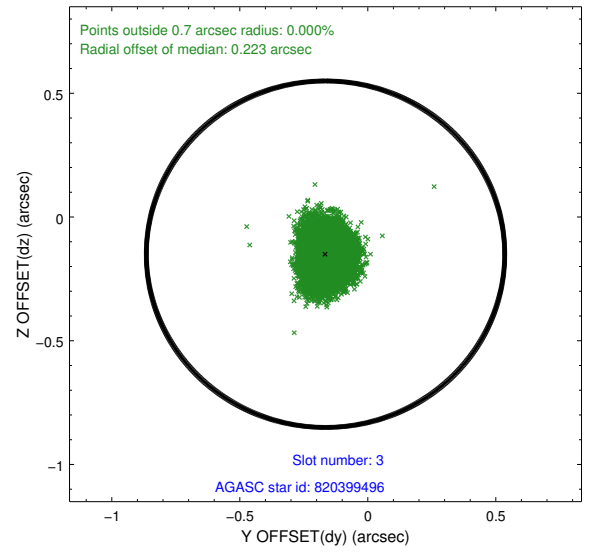
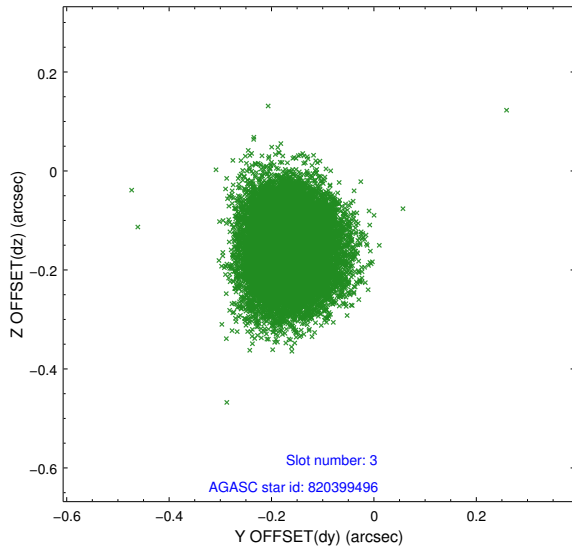


Slot Statistics

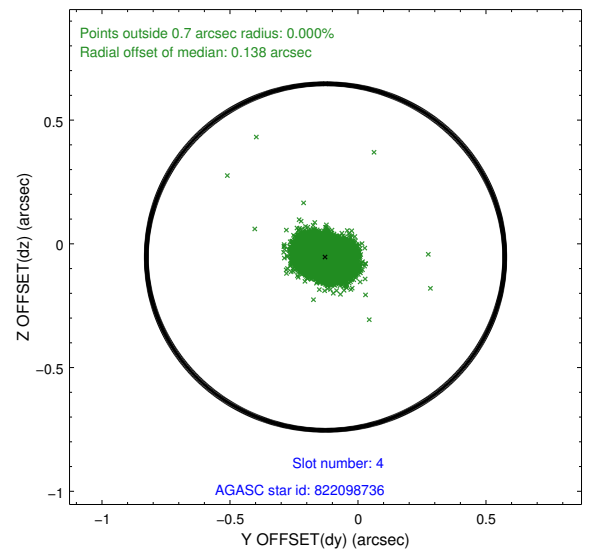
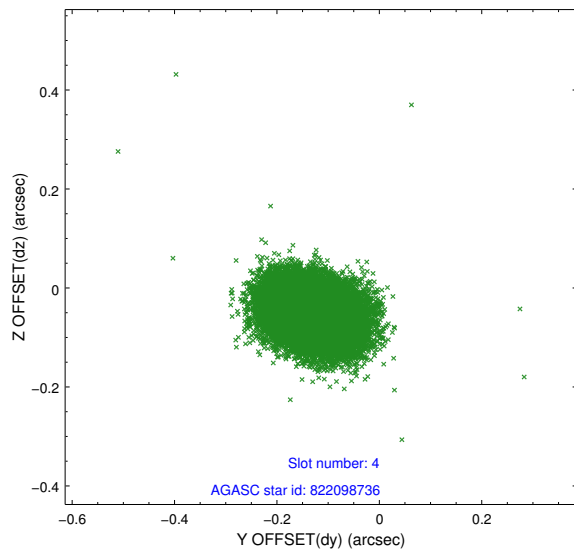
slot	status	id	mag	n_pts	med_dy	med_dz	dr1	dr2	ra	dec	mean_y	mean_z
0	FID	ACIS-S-1	7.18	8578	0.013	-0.031	0.031	0.045	0.000000	0.000000	937.02	-1726.96
1	FID	ACIS-S-5	7.23	8577	-0.061	0.005	0.018	0.025	0.000000	0.000000	-1812.01	170.61
2	FID	ACIS-S-6	7.35	8578	0.027	0.039	0.033	0.052	0.000000	0.000000	402.56	814.62
3	GUIDE	820399496	8.33	17152	-0.165	-0.150	0.081	0.132	271.495152	-19.953854	-1654.72	-2158.61
4	GUIDE	822098736	8.48	17149	-0.127	-0.053	0.066	0.107	272.269355	-19.875225	-1867.76	468.54
5	GUIDE	822616024	8.43	17150	0.207	-0.007	0.053	0.086	272.218514	-20.919122	1884.20	188.95
6	GUIDE	822617304	8.97	17140	0.173	0.124	0.072	0.120	272.421826	-20.831304	1588.33	881.76
7	GUIDE	822102232	8.80	17149	-0.093	0.087	0.067	0.109	272.350923	-20.034935	-1284.75	727.93

2.4 Star Slots

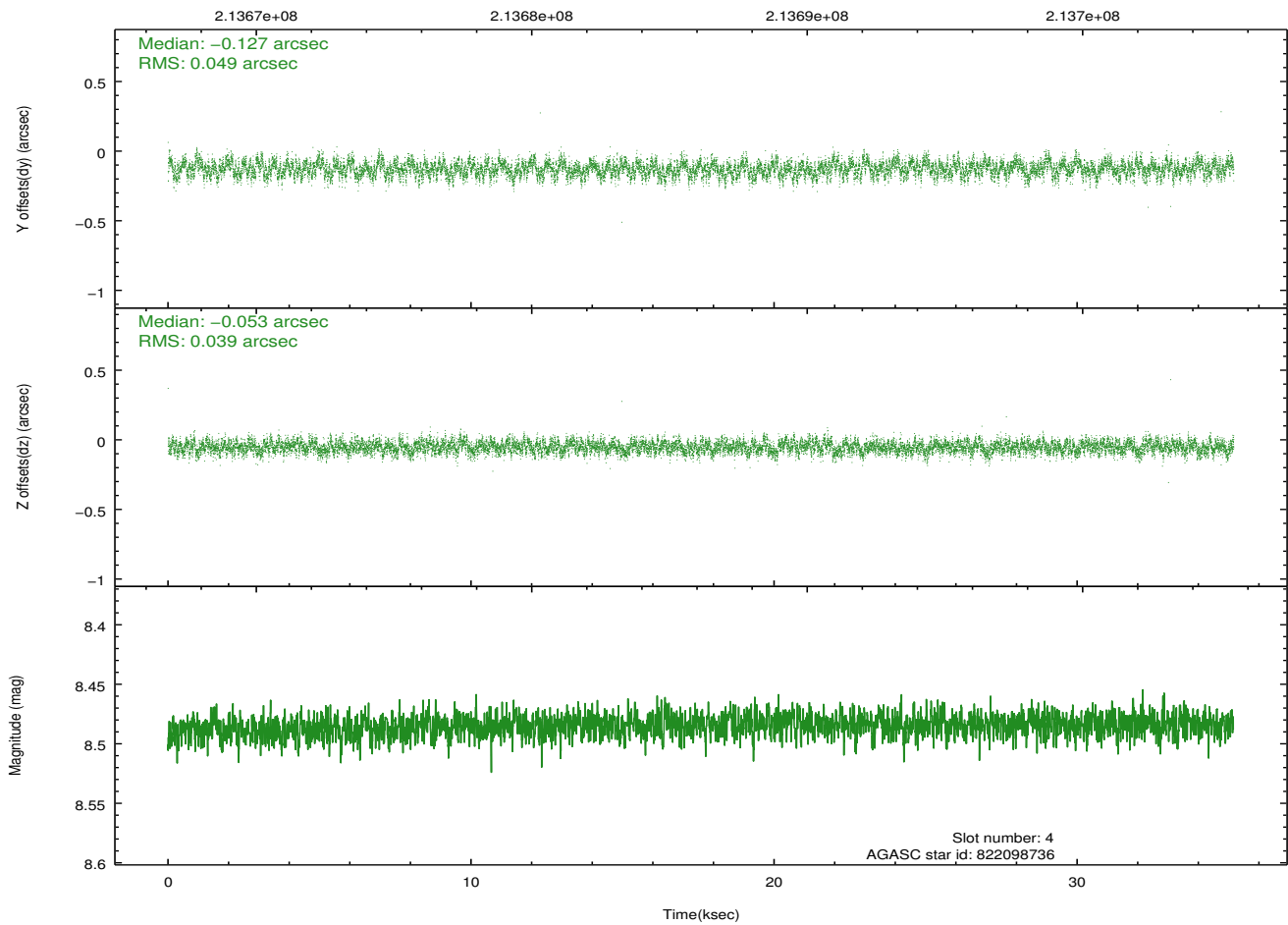
2.4.1 Slot 3



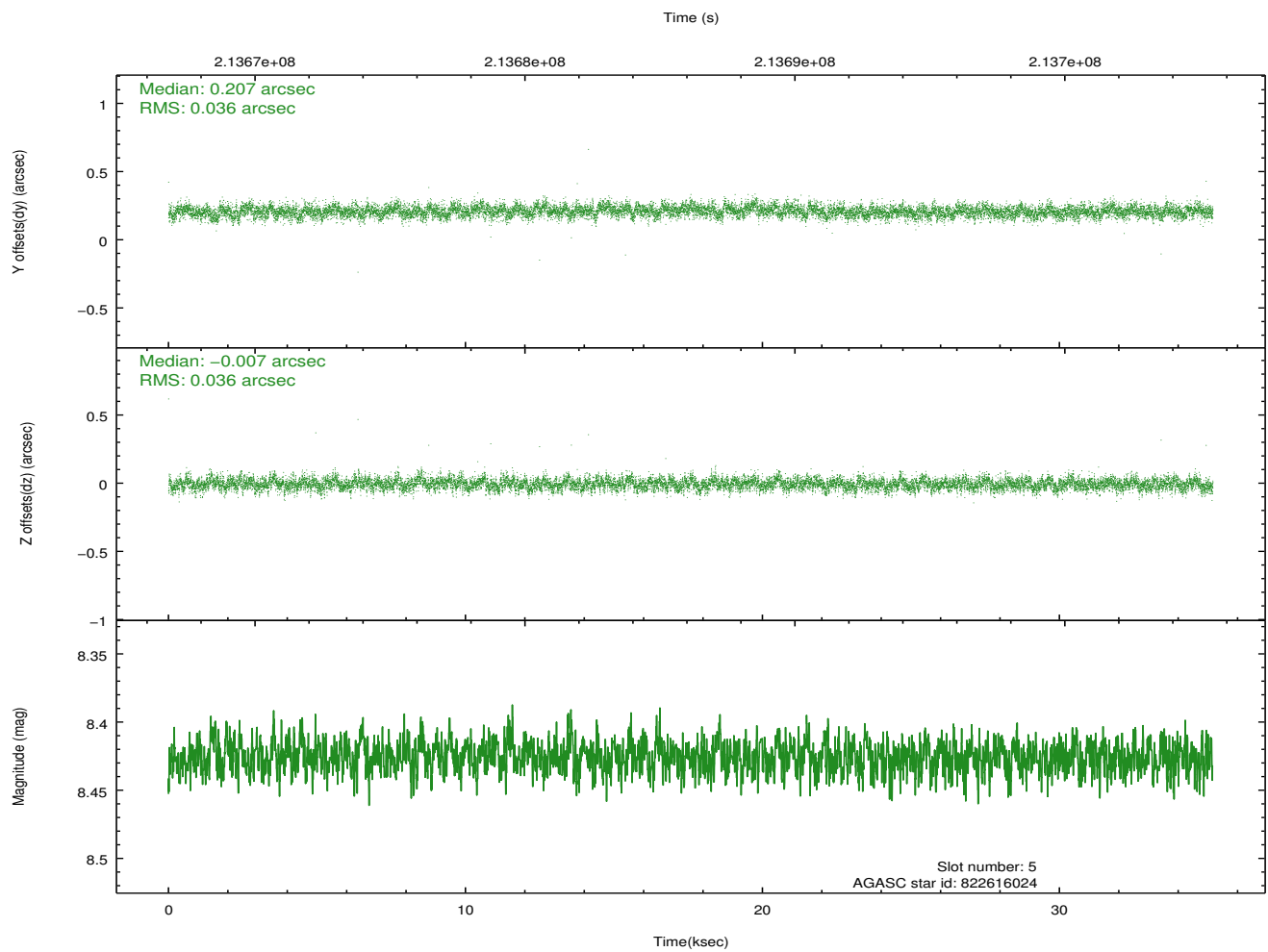
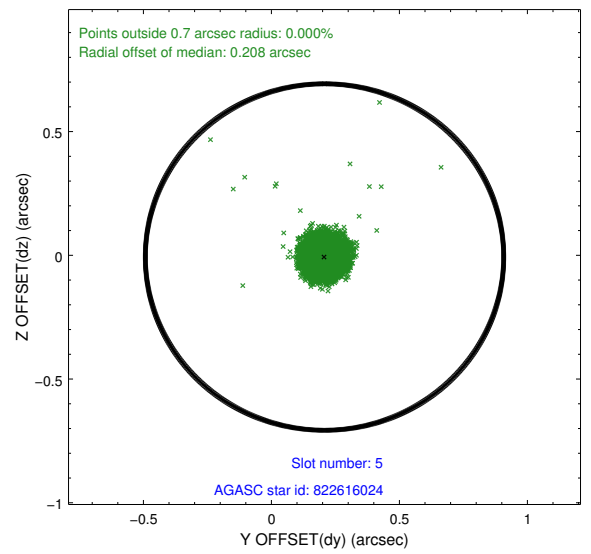
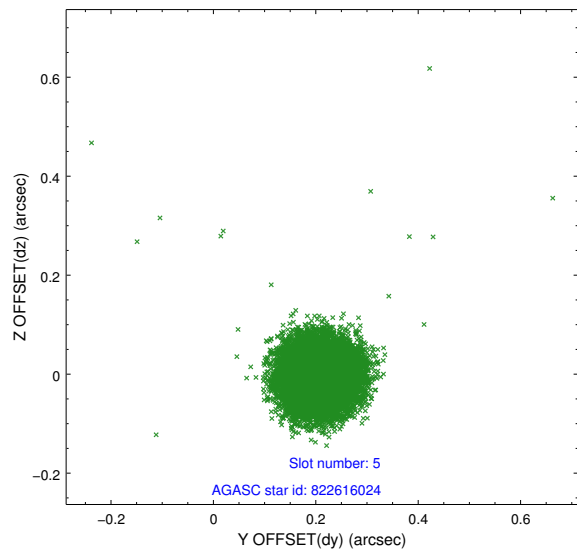
2.4.2 Slot 4



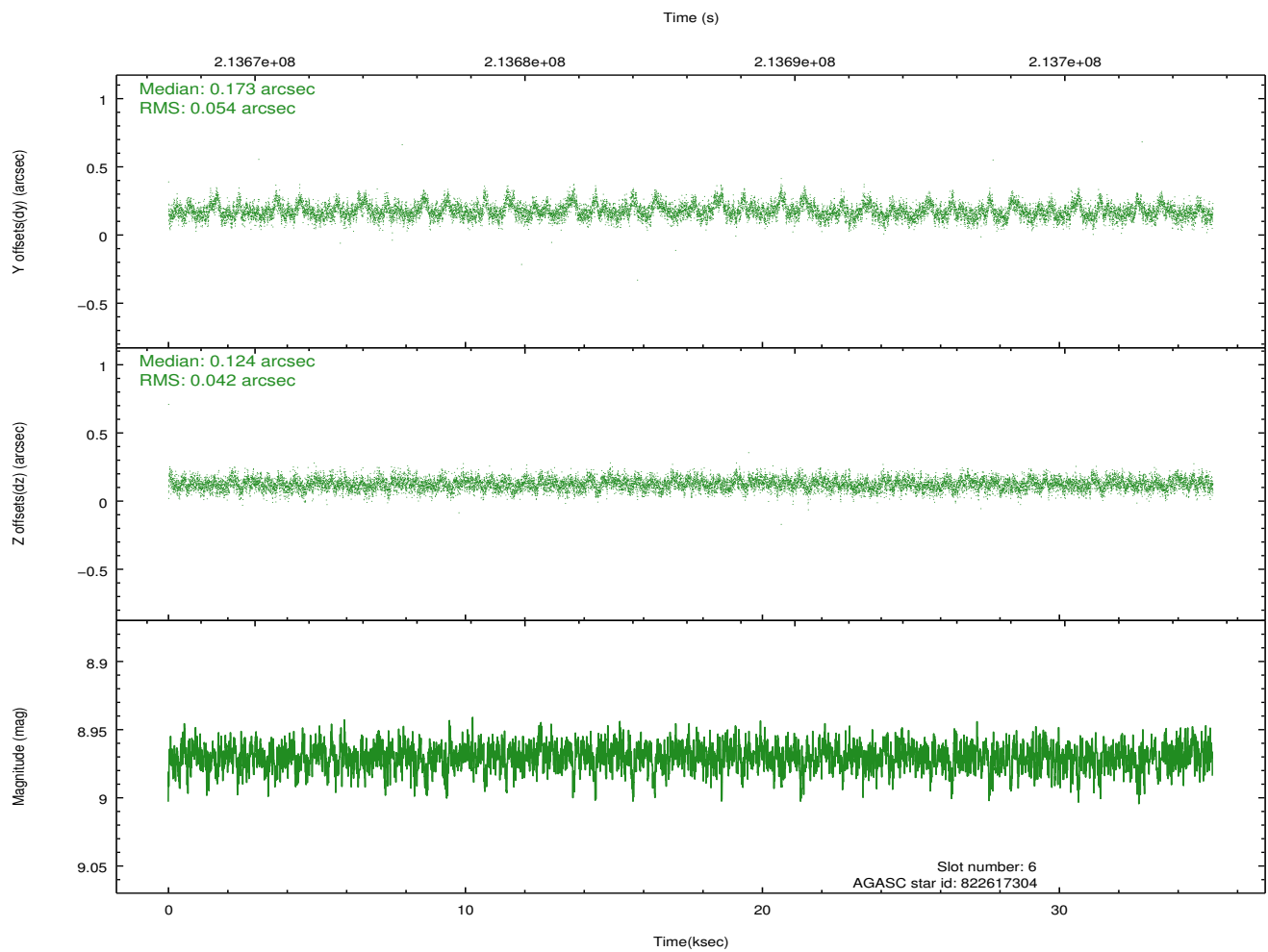
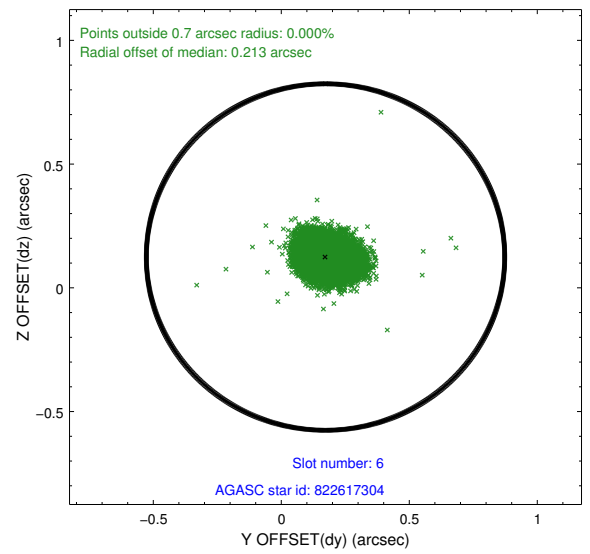
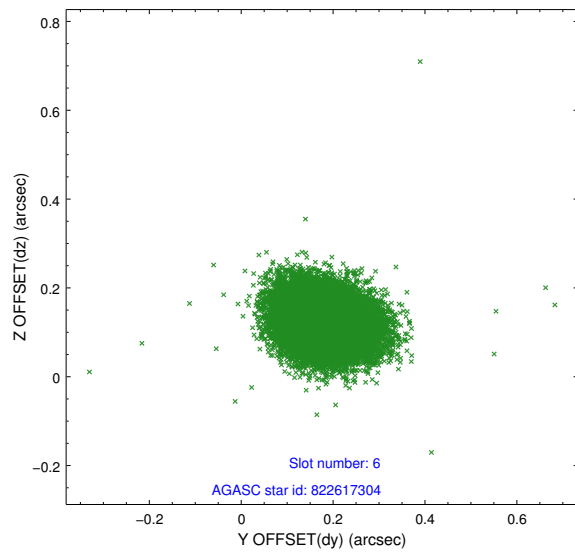
Time (s)



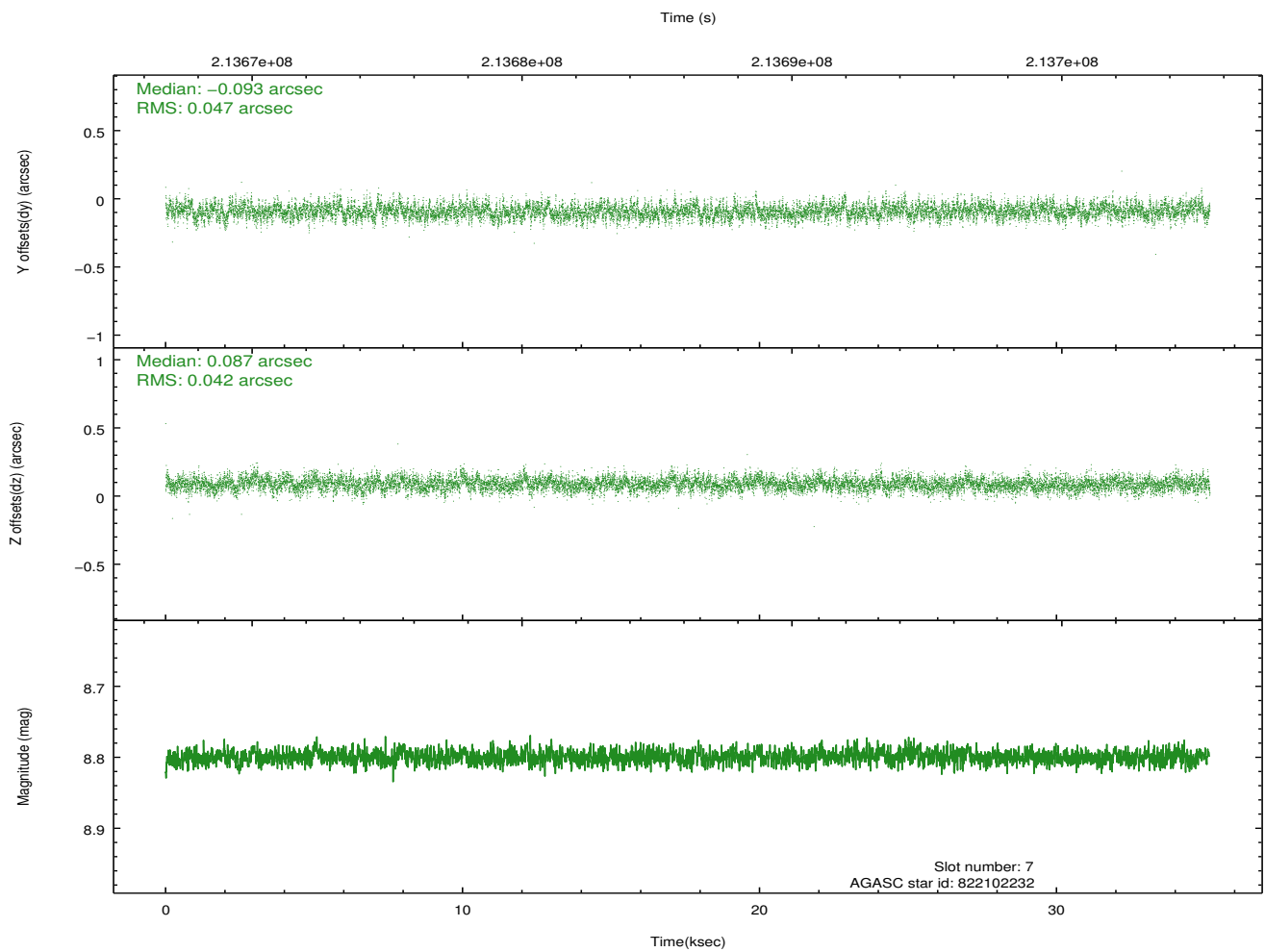
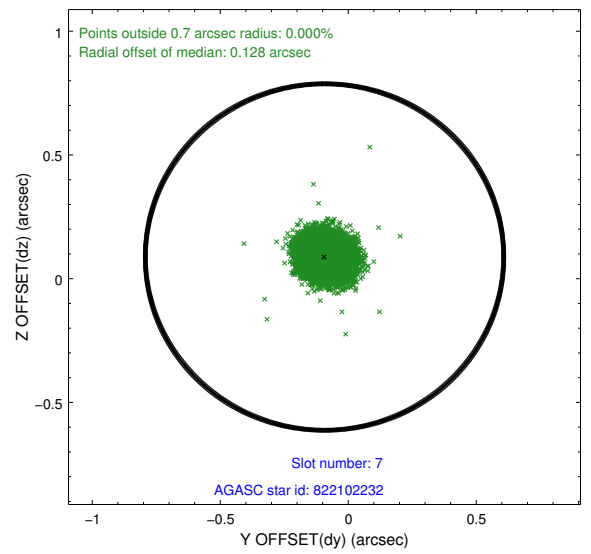
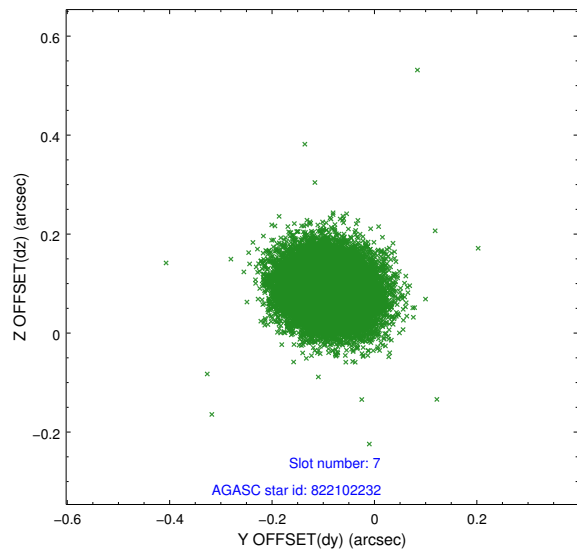
2.4.3 Slot 5



2.4.4 Slot 6

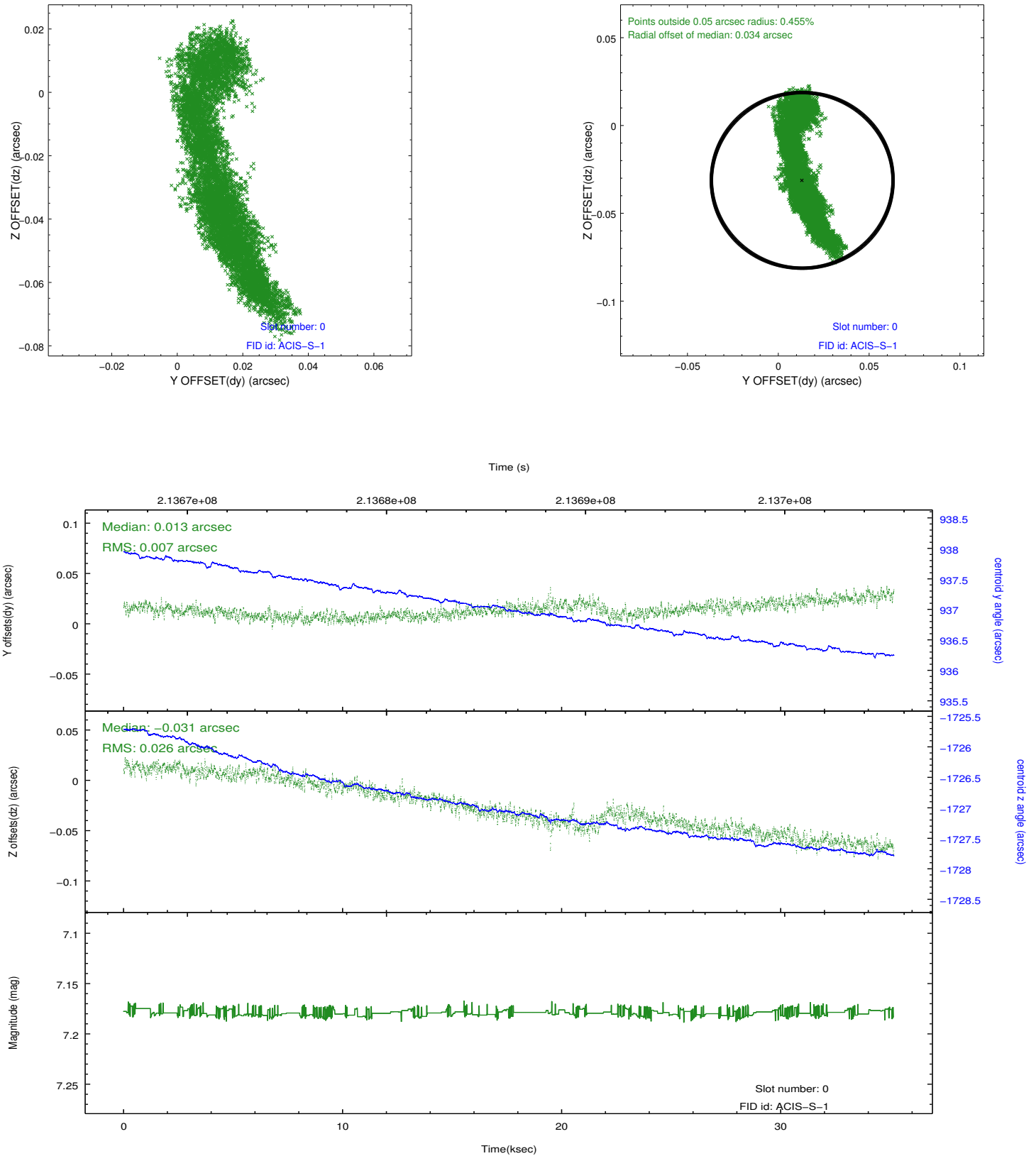


2.4.5 Slot 7

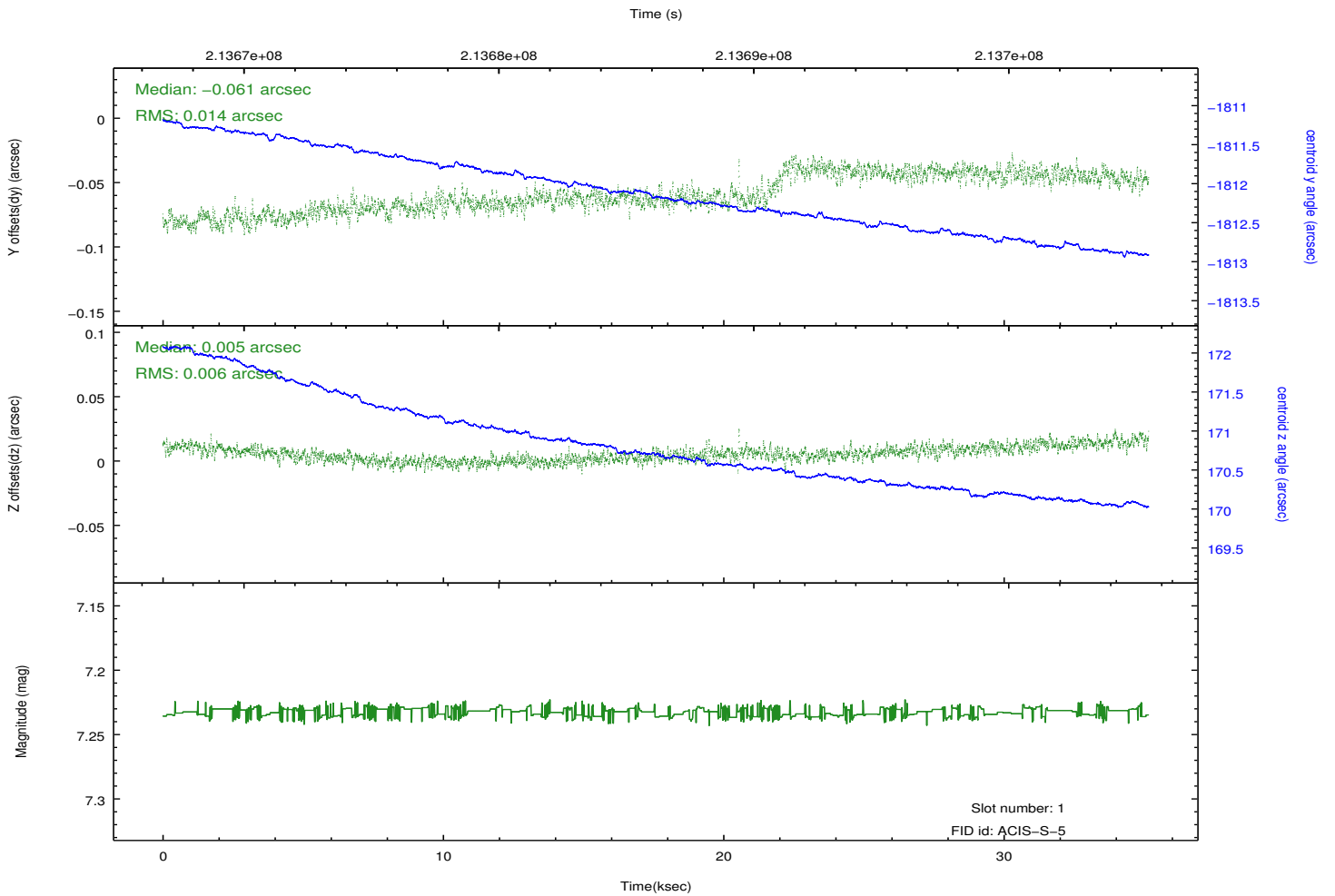
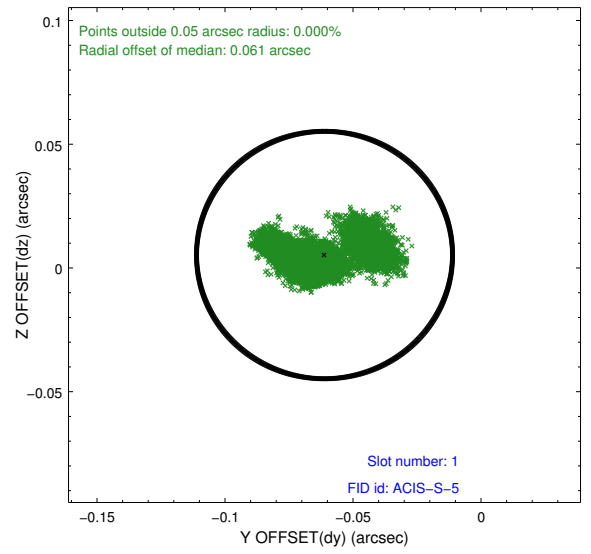
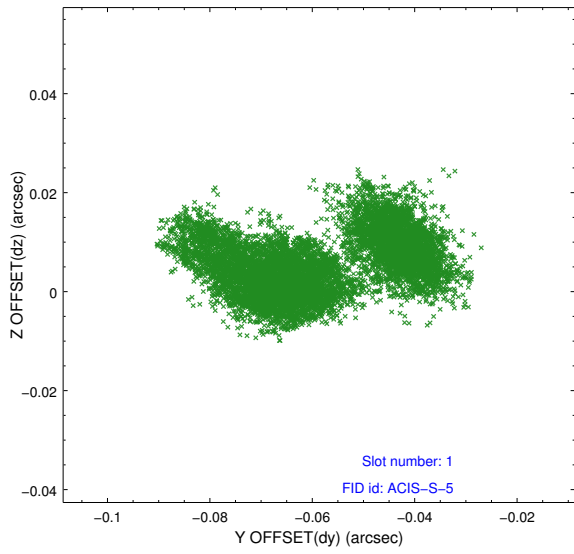


2.5 FID Slots

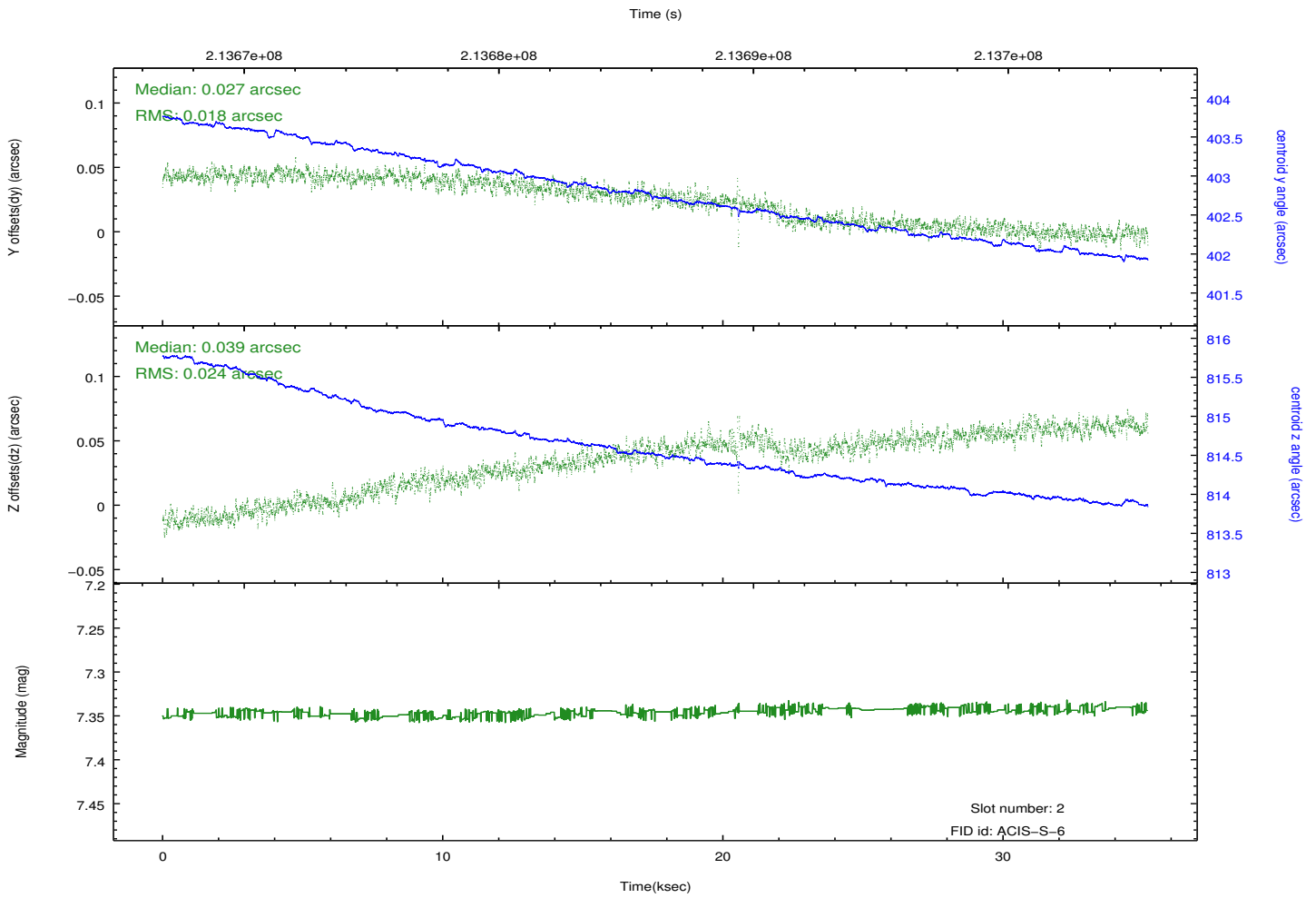
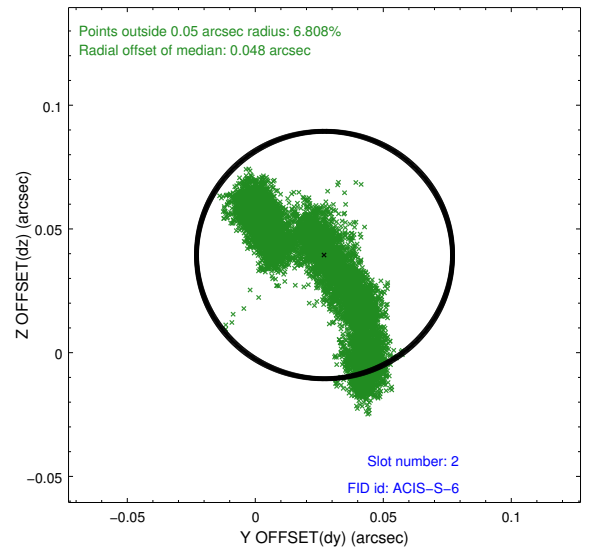
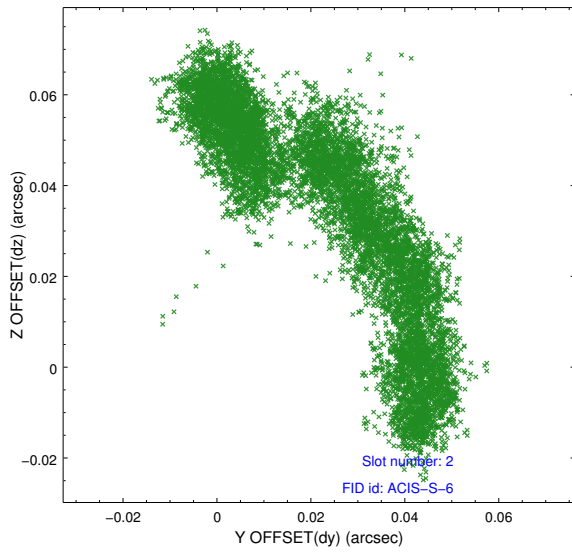
2.5.1 Slot 0



2.5.2 Slot 1



2.5.3 Slot 2



A Summary

A.1 Status

V&V Scientist	Joy Nichols
V&V Date (YYYY-MM-DD)	2012.12.28
V&V Edition	1
V&V Disposition and Status	OK
V&V Charge Time	35.164

A.2 Comments