

V&V Reference Report

L2 ASCDS Version : 8.5

Observation 4654 - L2 Version 4
Chandra X-Ray Center

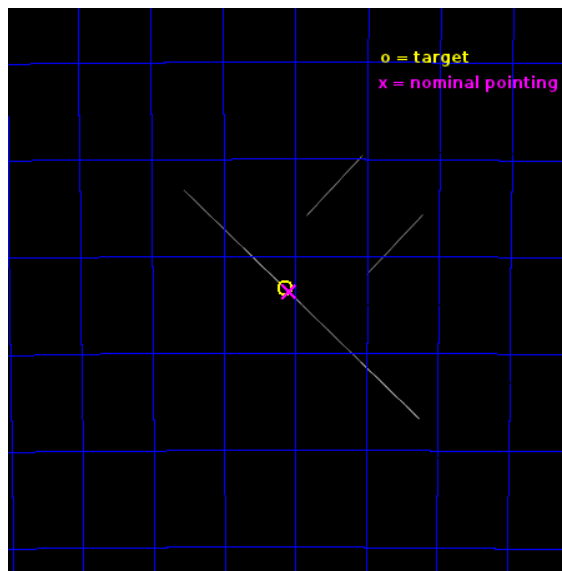
L2 Processing Date : Dec 6 2012

Contents

1	Front	2
2	OBI	3
2.1	OBI	3
2.1.1	Images	3
2.1.2	Bias	3
2.1.3	Parameters	4
2.1.4	Events	4
2.2	Compared Parameters	5
2.3	Aspect	6
2.4	Star Slots	9
2.4.1	Slot 3	9
2.4.2	Slot 4	10
2.4.3	Slot 5	11
2.4.4	Slot 6	12
2.4.5	Slot 7	13
2.5	FID Slots	14
2.5.1	Slot 0	14
2.5.2	Slot 1	15
2.5.3	Slot 2	16
A	Summary	17
A.1	Status	17
A.2	Comments	17

1 Front

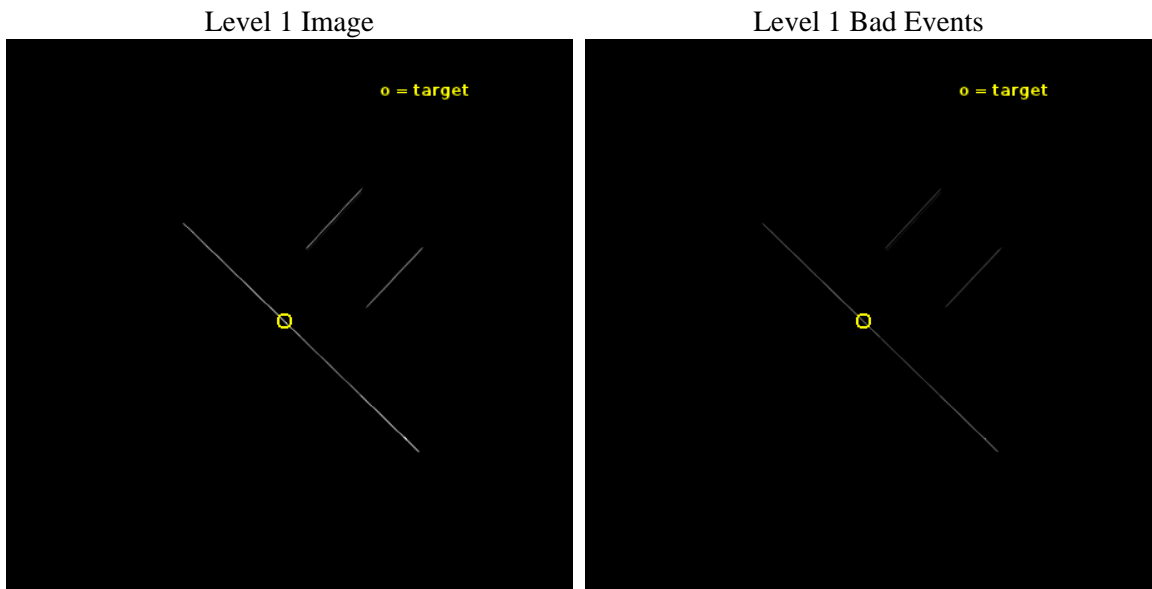
seq_num	500473	Sequence number
obs_id	4654	Observation id
title	X-ray Bursts from Anomalous X-ray Pulsars	Proposal title
observer	Dr. Victoria Kaspi	Principal investigator
object	1E 1048.1-5937	Source name
ra_targ	162.537083	Observer's specified target RA [deg]
dec_targ	-59.889	Observer's specified target Dec [deg]
ra_nom	162.52100408261	Nominal RA [deg]
dec_nom	-59.894354103889	Nominal Dec [deg]
roll_nom	223.58205376617	Nominal Roll [deg]
revision	4	Processing version of data
ontime	28081.041906536	Sum of GTIs [s]
livetime	27971.350336588	Livetime [s]
ontime2	28081.041644722	Sum of GTIs [s]
ontime3	28081.039891183	Sum of GTIs [s]
ontime5	28081.041903198	Sum of GTIs [s]
ontime6	28081.041904747	Sum of GTIs [s]
ontime7	28081.041906536	Sum of GTIs [s]
ontime8	28081.041908085	Sum of GTIs [s]
l2events	412629	Number of level 2 events



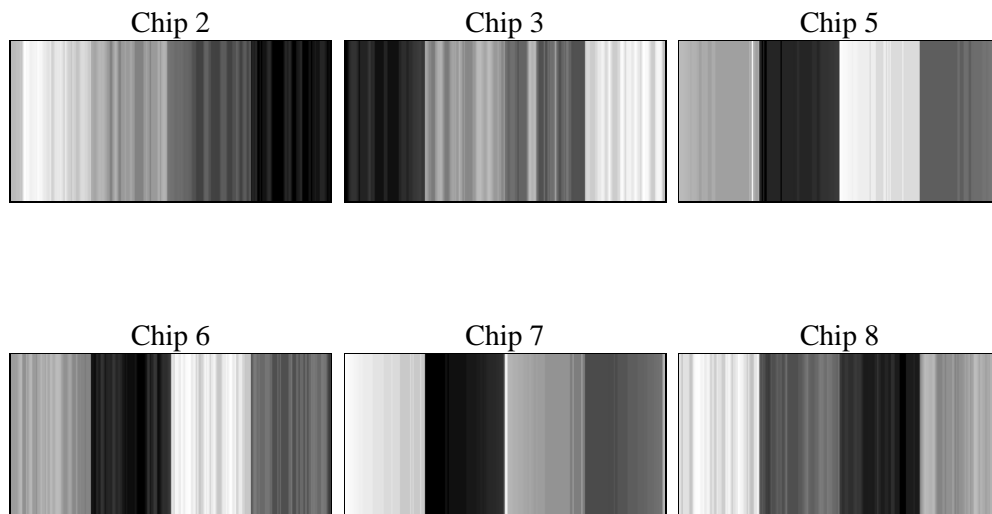
2 OBI

2.1 OBI

2.1.1 Images



2.1.2 Bias



2.1.3 Parameters

obi_num	0	Obi number	sched_exp_time	27952.157000	[s] Scheduled observation exposure time
ascdsver	8.5	Processing system revision	ontime	28081.041906536	Sum of GTIs [s]
caldbver	4.5.4	 	ontime2	28081.041644722	Sum of GTIs [s]
date	2012-12-06T09:22:41	Date and time of file creation	ontime3	28081.039891183	Sum of GTIs [s]
revision	4	Processing version of data	ontime5	28081.041903198	Sum of GTIs [s]
			ontime6	28081.041904747	Sum of GTIs [s]
			ontime7	28081.041906536	Sum of GTIs [s]
			ontime8	28081.041908085	Sum of GTIs [s]
			l1events	642698	Number of level 1 events

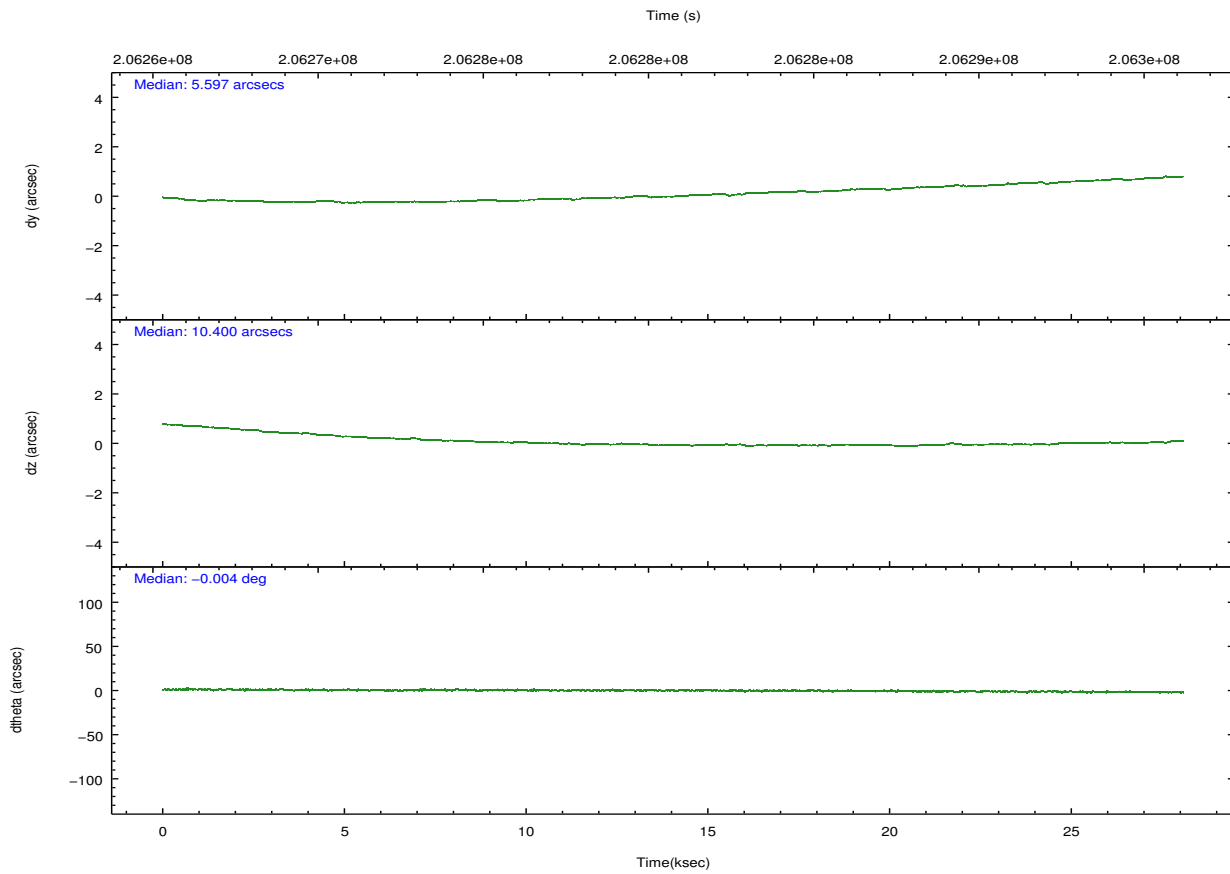
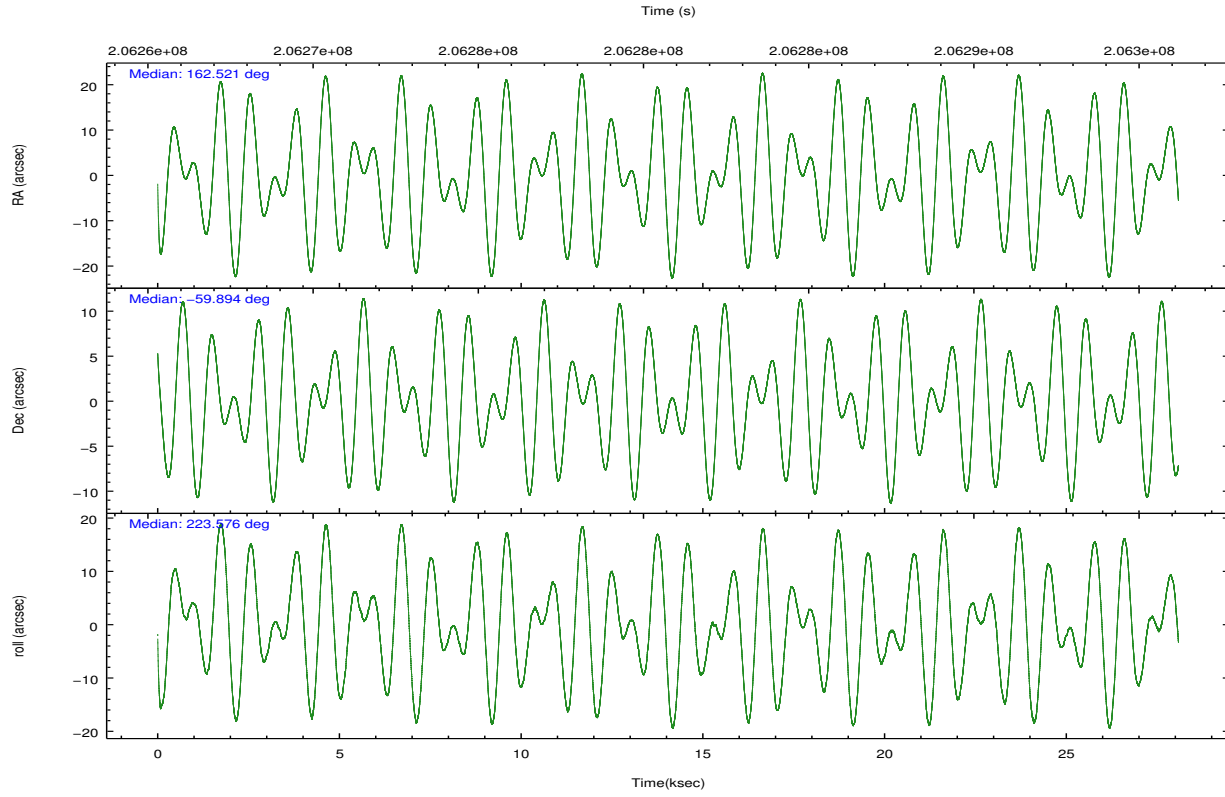
2.1.4 Events

	ccd 2	ccd 3	ccd 5	ccd 6	ccd 7	ccd 8		ccd 2	ccd 3	ccd 5	ccd 6	ccd 7	ccd 8
level 1 events	46474	46547	228183	48246	180105	93143	grade 0 events	6233	5206	58696	4884	20458	16284
rejected events	9646	9830	27414	10908	28341	16398		13%	11%	25%	10%	11%	17%
rejected %	20%	21%	12%	22%	15%	17%	grade 1 events	190	195	327	175	399	354
								0%	0%	0%	0%	0%	0%
							grade 2 events	14677	14892	56807	15452	39757	25596
								31%	31%	24%	32%	22%	27%
							grade 3 events	4582	5378	4207	4728	12707	8685
								9%	11%	1%	9%	7%	9%
							grade 4 events	4909	4705	4060	4568	12478	8455
								10%	10%	1%	9%	6%	9%
							grade 5 events	8124	8239	19884	9308	23413	12897
								17%	17%	8%	19%	12%	13%
							grade 6 events	7759	7932	84202	9131	70893	20872
								16%	17%	36%	18%	39%	22%
							grade 7 events	0	0	0	0	0	0
								0%	0%	0%	0%	0%	0%

2.2 Compared Parameters

Parameter	Planned	Actual	Parameter	Planned	Actual
Instrument	ACIS	ACIS	Obspar format version number	7	7
Detector	ACIS-235678	ACIS-235678	Obspar file type	PREDICTED	ACTUAL
Grating	NONE	NONE	Obspar update status	NONE	UPDATED
Data mode	CC33_FAINT	CC33_FAINT	Number of optional ACIS chips dropped	0	0
Observation mode	POINTING	POINTING	On-chip summing requested	N	N
[deg] Pointing RA	162.535642	162.5210040826124	Subarray requested	NONE	NONE
[deg] Pointing Dec	-59.868118	-59.8943541038887	Alternating exposures requested	N	N
[deg] Pointing Roll	223.438089	223.582053766173	[s] Primary exposure time	0.000000	0
[mm] SIM focus pos	-0.684267	-0.6828225247311905			
[mm] SIM defocus	0	0.001444936568705701			
[mm] SIM translation stage pos	-190.132523	-190.1400660498719			
[mm] SIM translation stage offset	0	0.00754346686406393			
[s] Observation start time (MET)	206266839.184000	206265590.76887			
Observation start date	2004-07-15T08:19:35	2004-07-15T07:59:50			
[s] Observation end time (MET)	206294792.184000	206295005.70768			
Observation end date	2004-07-15T16:05:28	2004-07-15T16:10:05			
Read mode	CONTINUOUS	CONTINUOUS			

2.3 Aspect

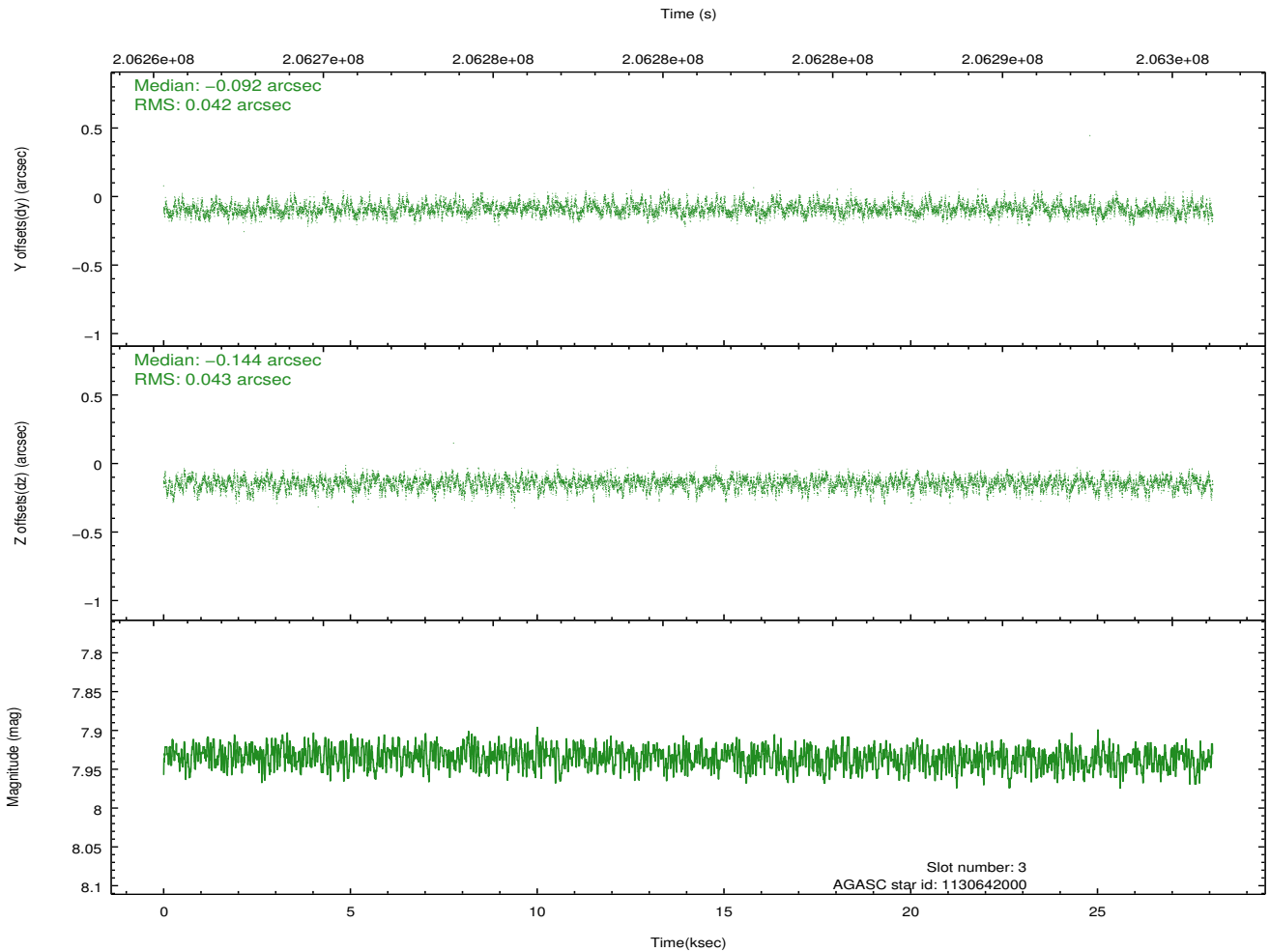
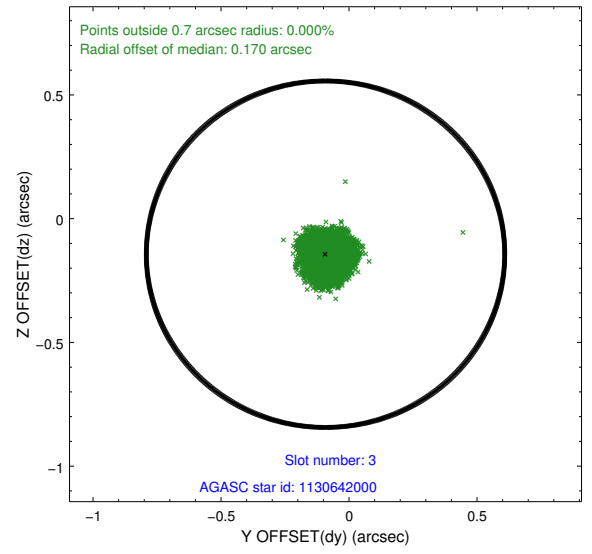
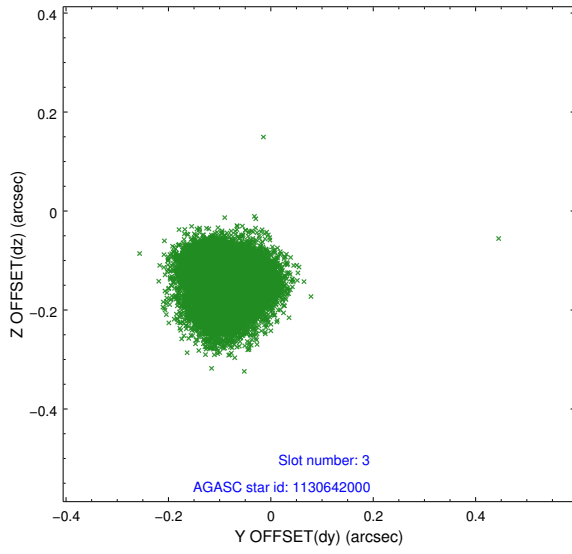


Slot Statistics

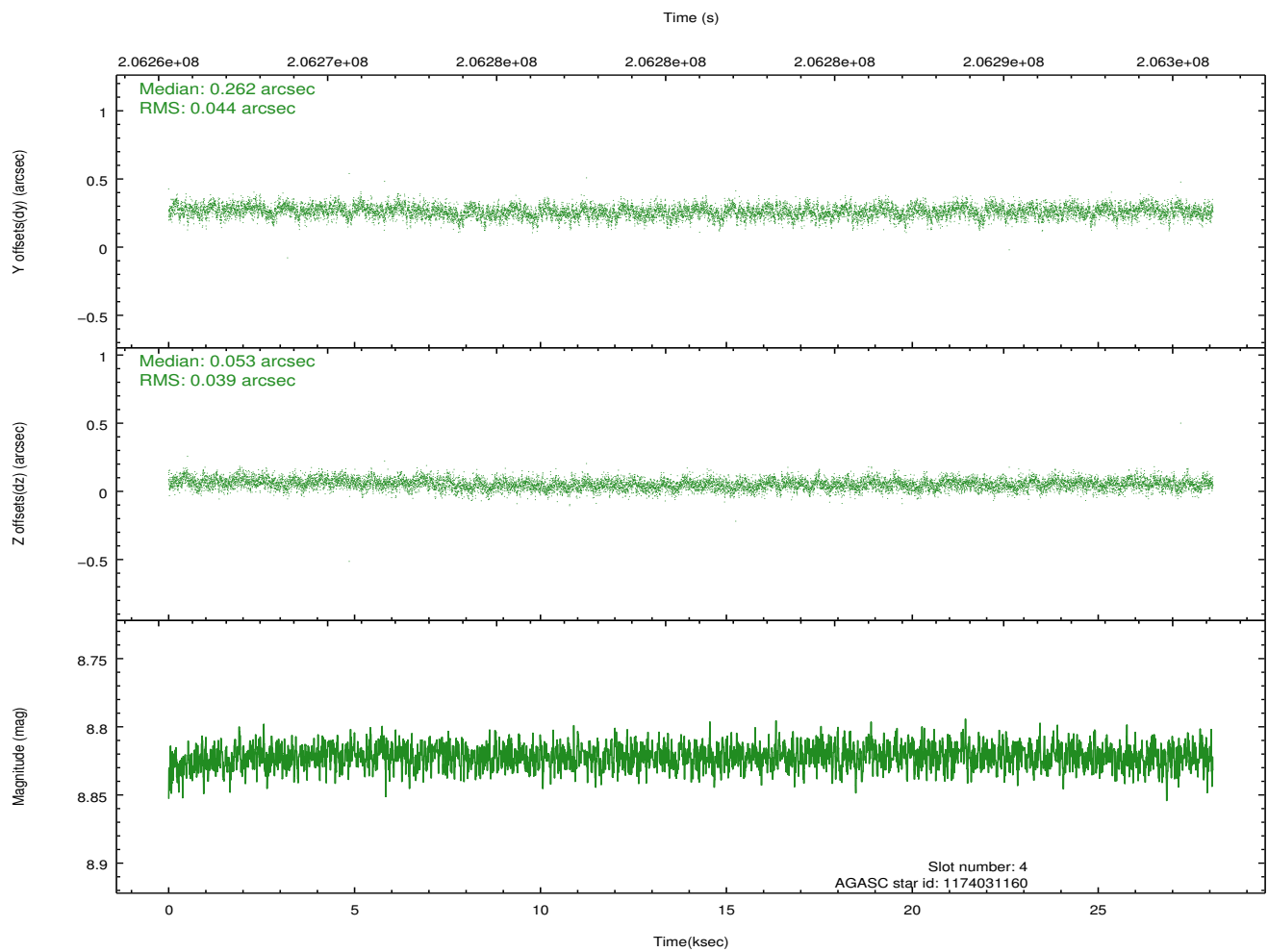
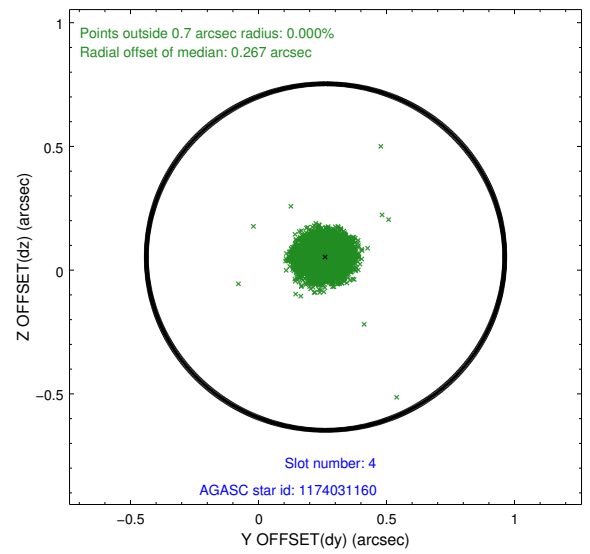
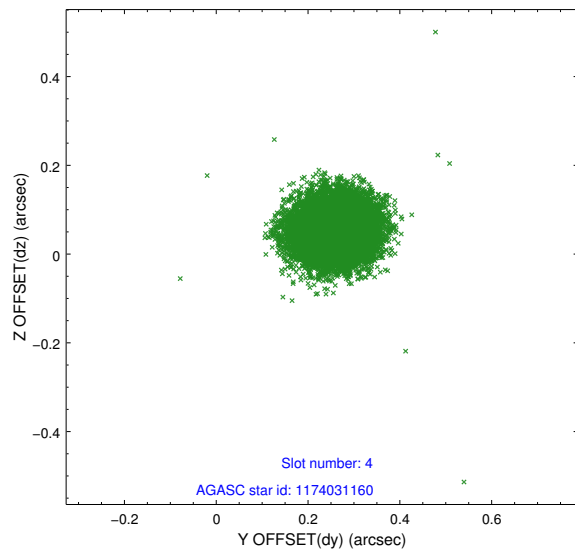
slot	status	id	mag	n_pts	med_dy	med_dz	dr1	dr2	ra	dec	mean_y	mean_z
0	FID	ACIS-S-2	7.10	6850	-0.080	-0.060	0.008	0.022	0.000000	0.000000	-758.50	-1731.82
1	FID	ACIS-S-4	7.21	6849	0.059	0.045	0.010	0.015	0.000000	0.000000	2154.88	176.68
2	FID	ACIS-S-6	7.34	6849	-0.004	0.024	0.010	0.017	0.000000	0.000000	403.67	814.16
3	GUIDE	1130642000	7.93	13697	-0.092	-0.144	0.065	0.102	162.836255	-59.743891	-702.55	51.00
4	GUIDE	1174031160	8.82	13694	0.262	0.053	0.062	0.100	162.483783	-60.757597	2268.11	2262.98
5	GUIDE	1130646160	8.65	13683	0.014	-0.054	0.074	0.115	162.161730	-59.561264	-262.60	-1269.39
6	GUIDE	1174033144	8.46	13686	-0.088	0.110	0.068	0.113	161.168741	-60.059230	2273.89	-1170.22
7	GUIDE	1174150720	8.96	13686	-0.092	0.033	0.097	0.158	164.104813	-60.030464	-1624.16	2388.69

2.4 Star Slots

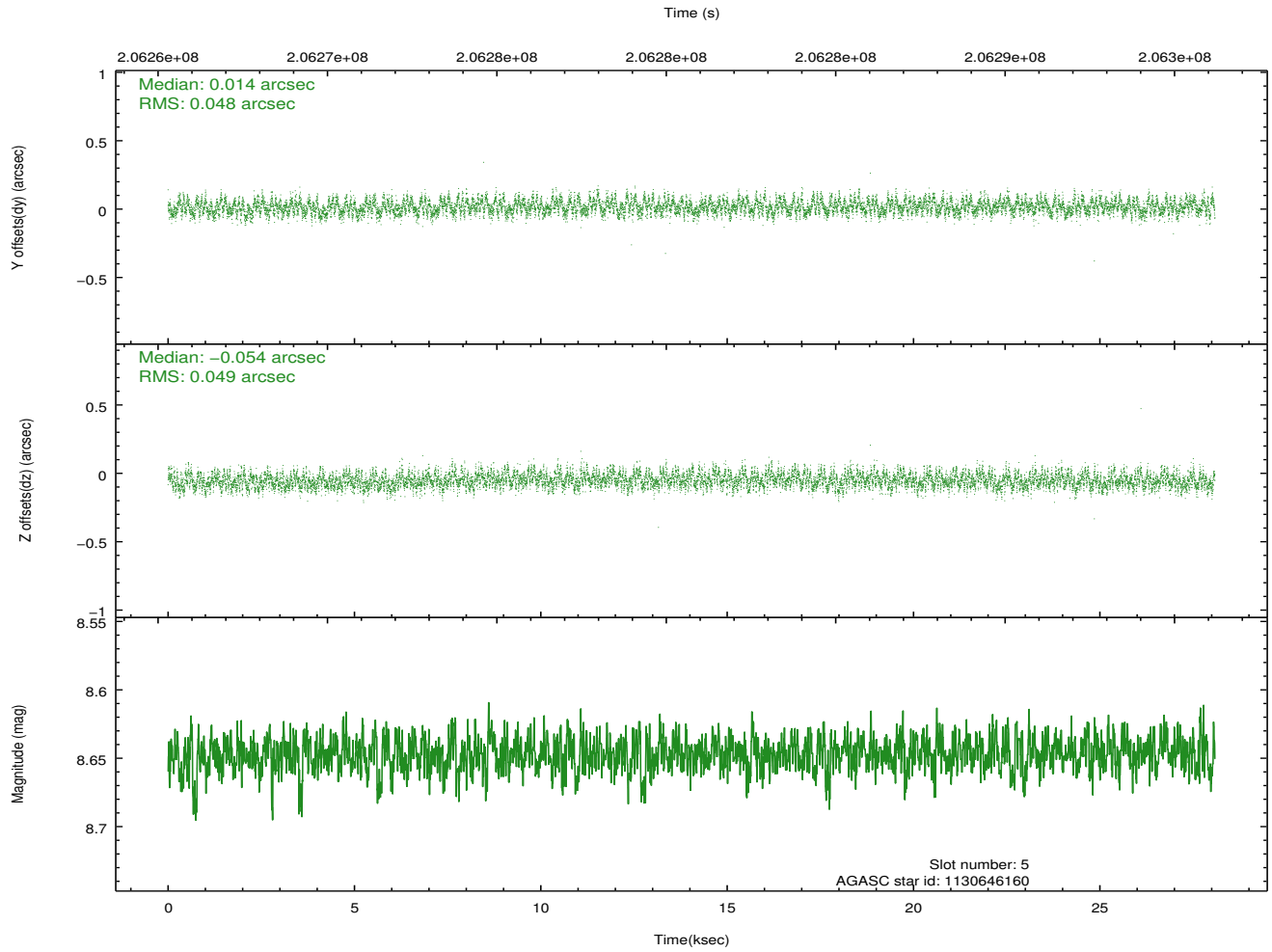
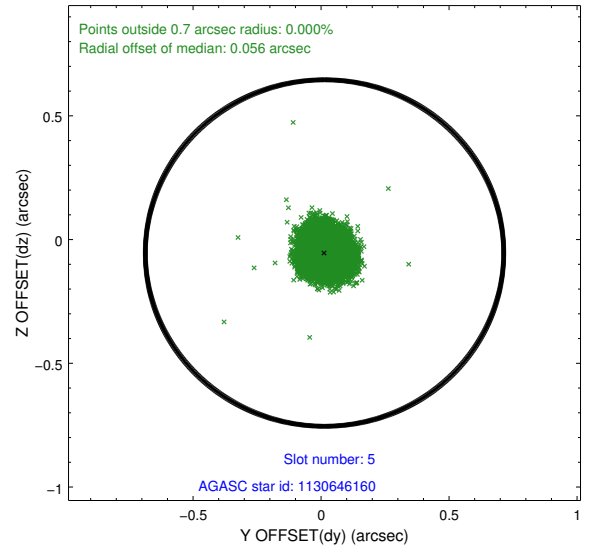
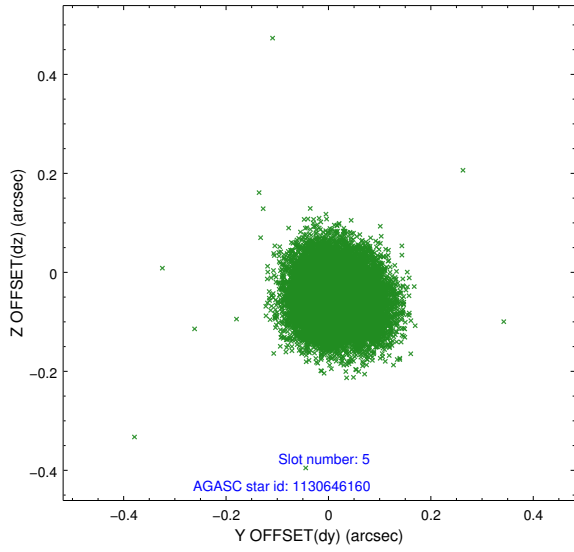
2.4.1 Slot 3



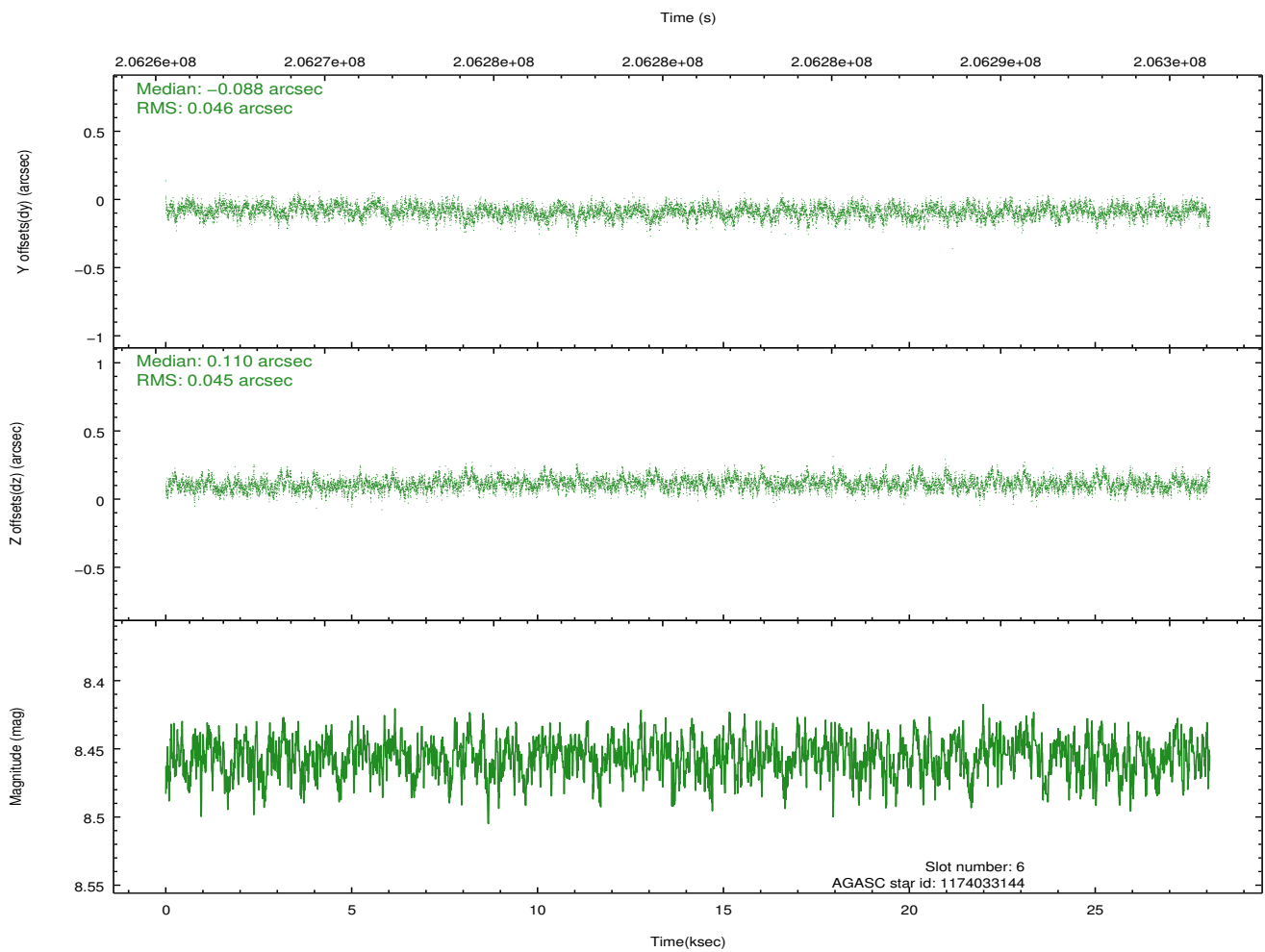
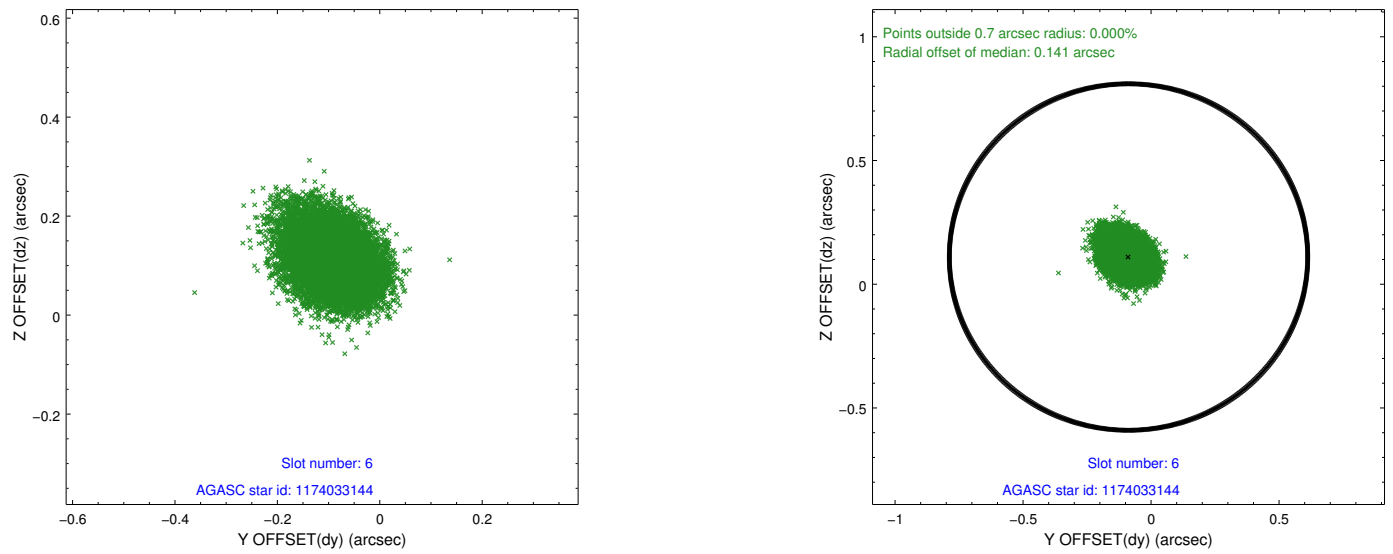
2.4.2 Slot 4



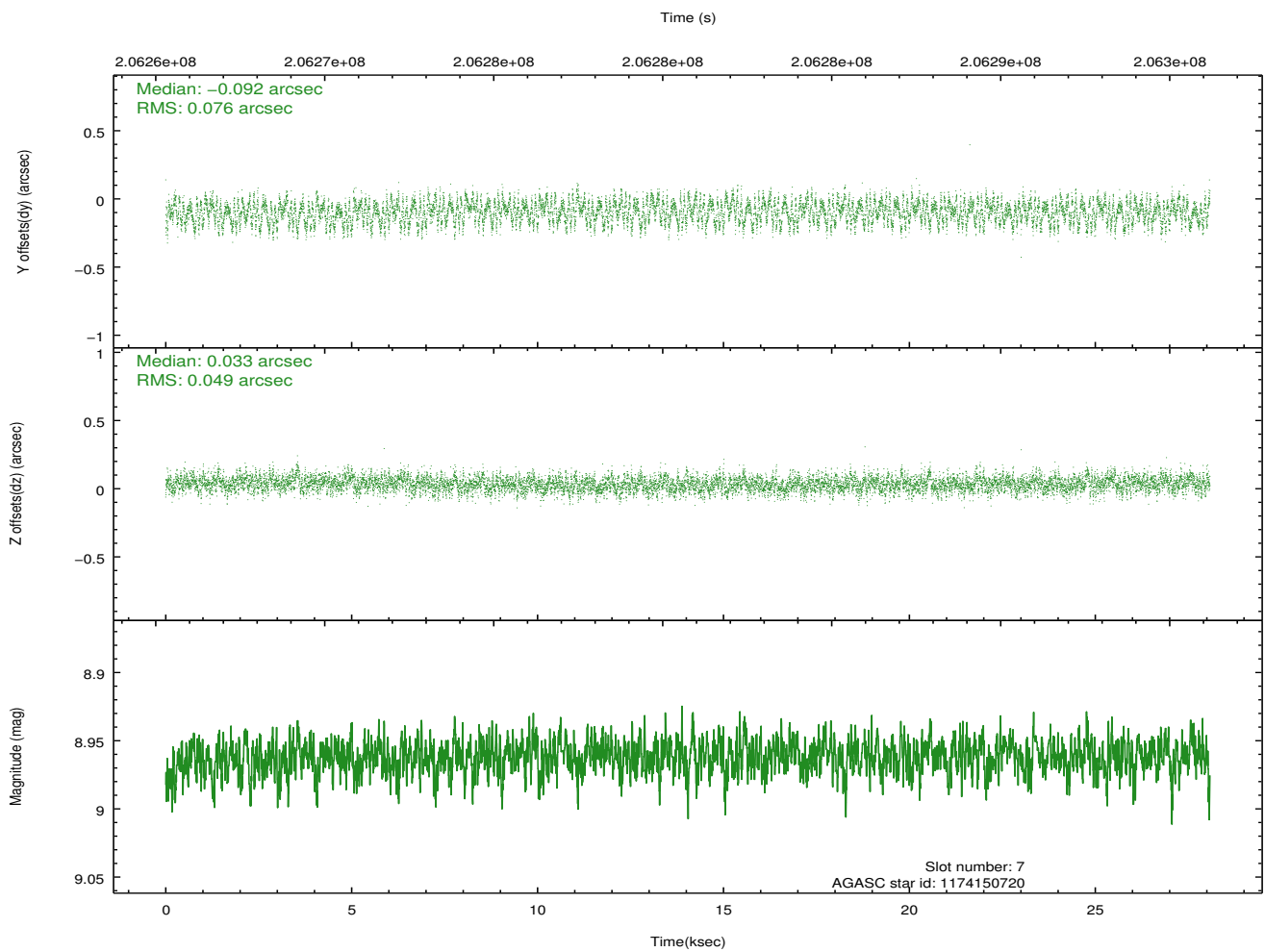
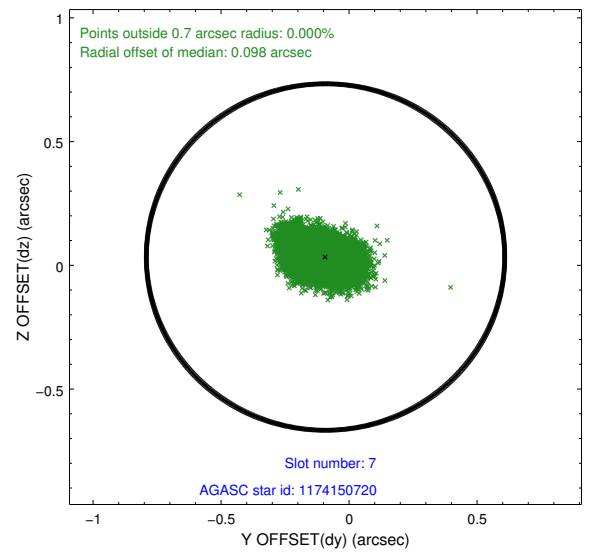
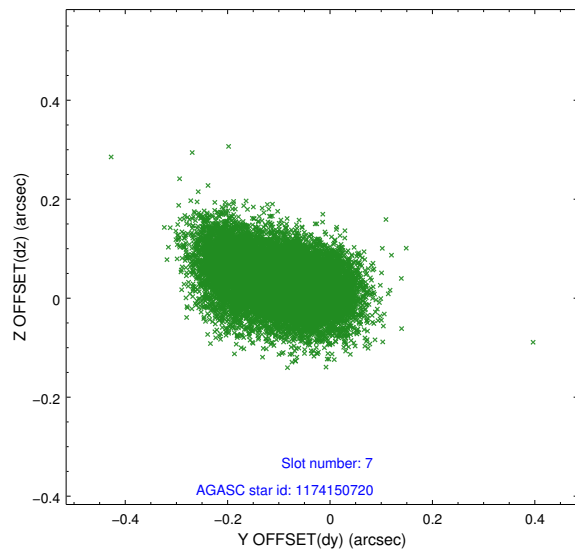
2.4.3 Slot 5



2.4.4 Slot 6

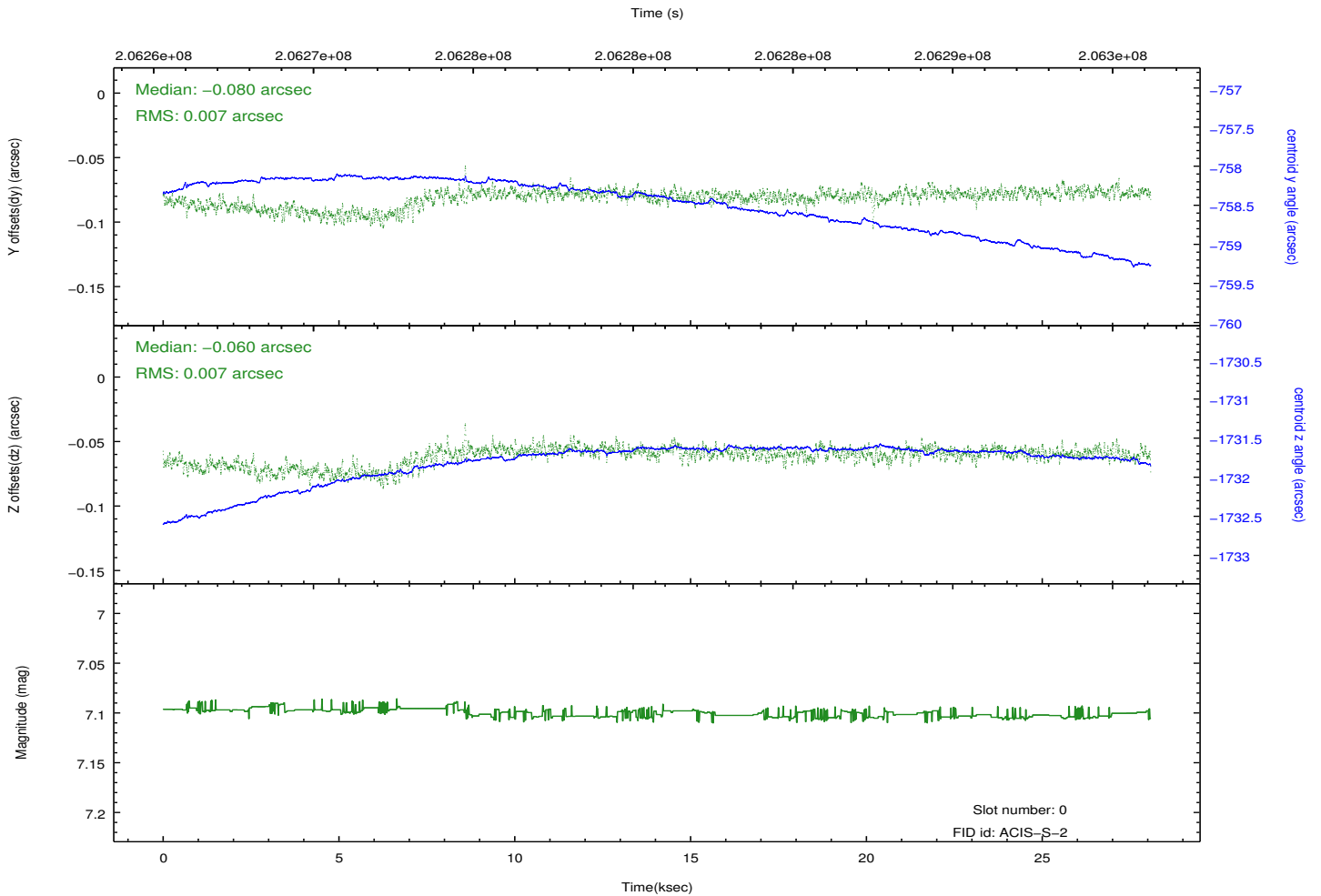
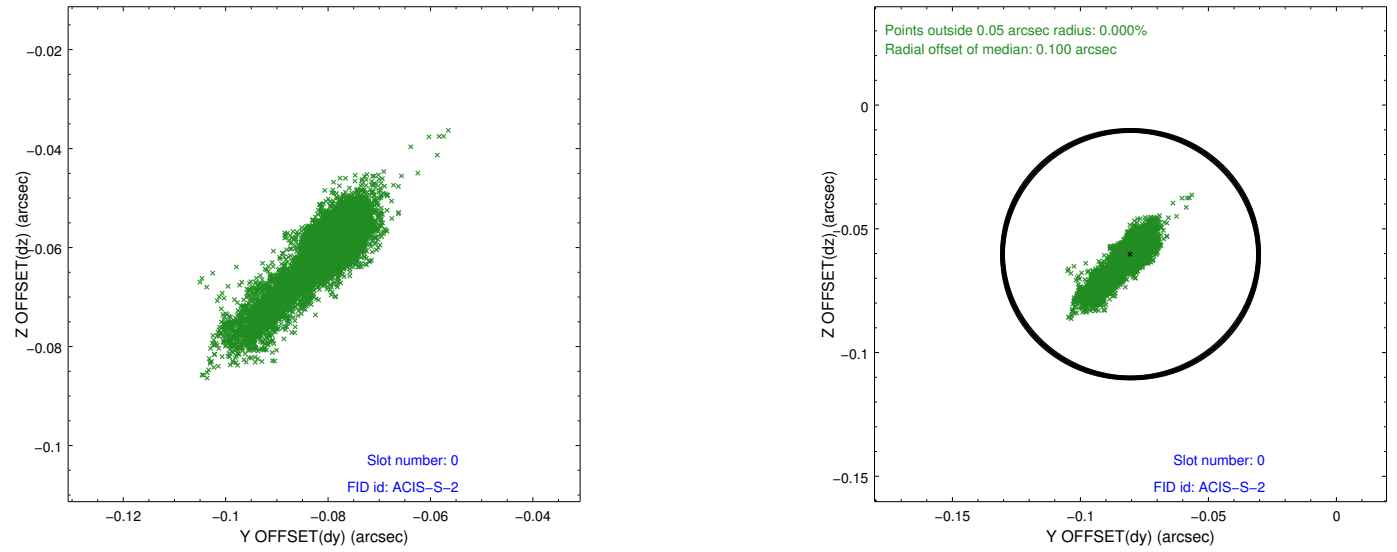


2.4.5 Slot 7

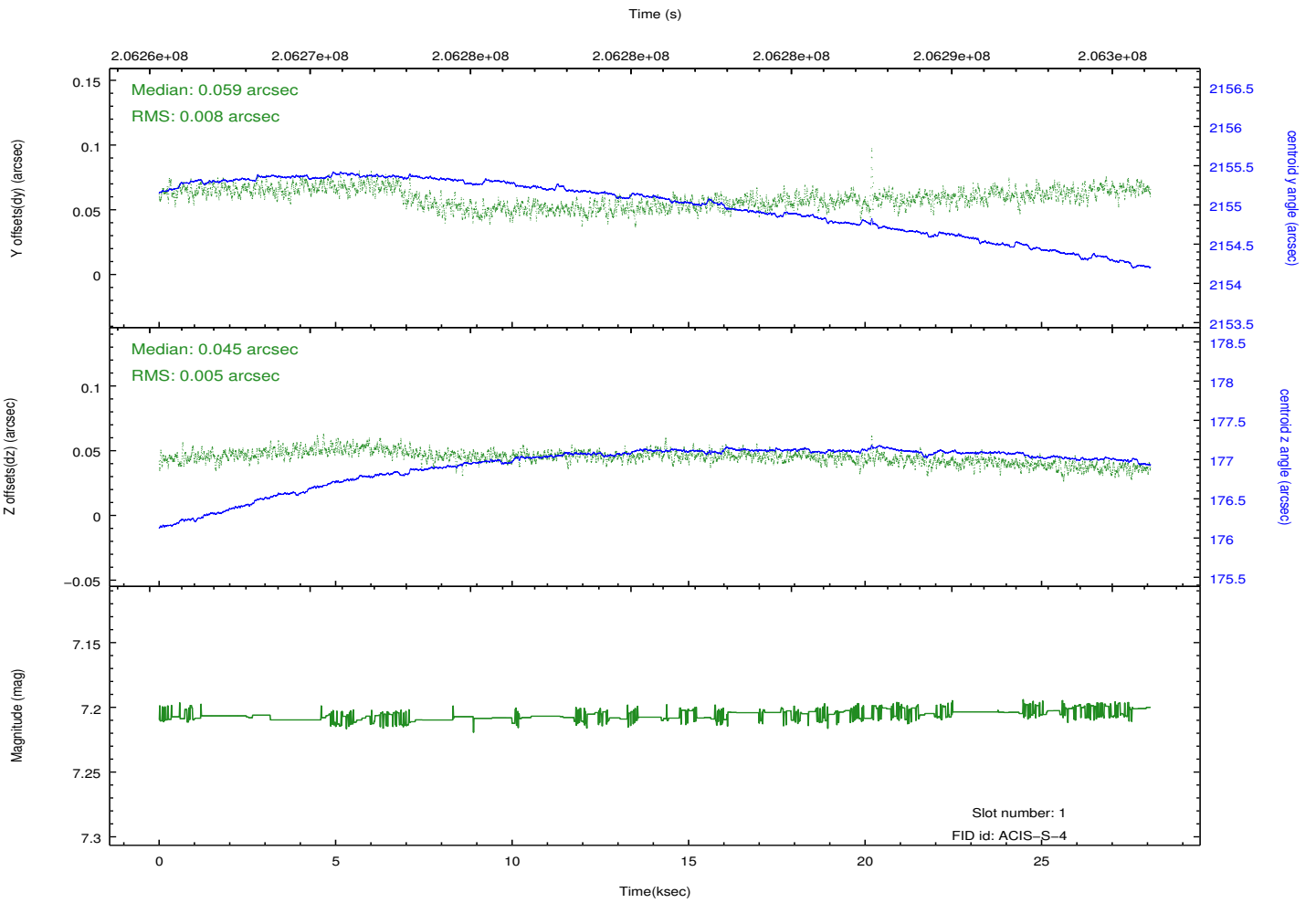
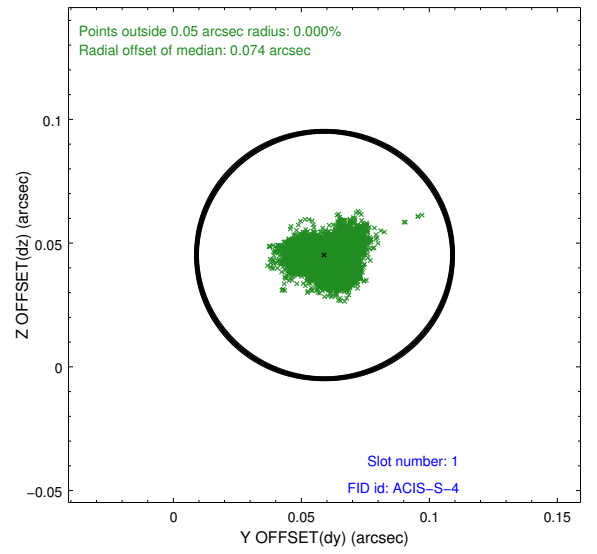
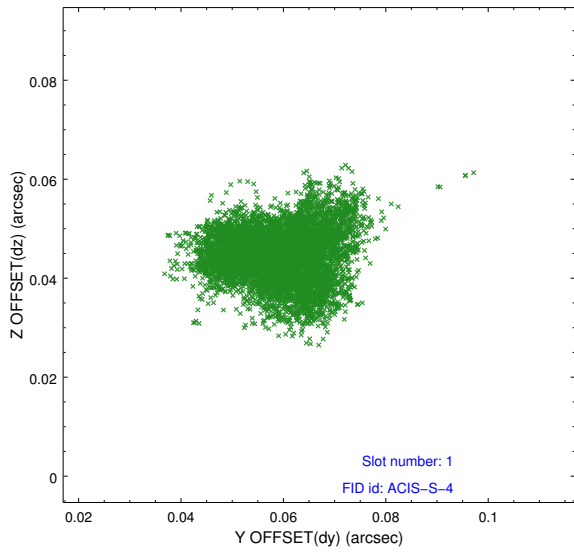


2.5 FID Slots

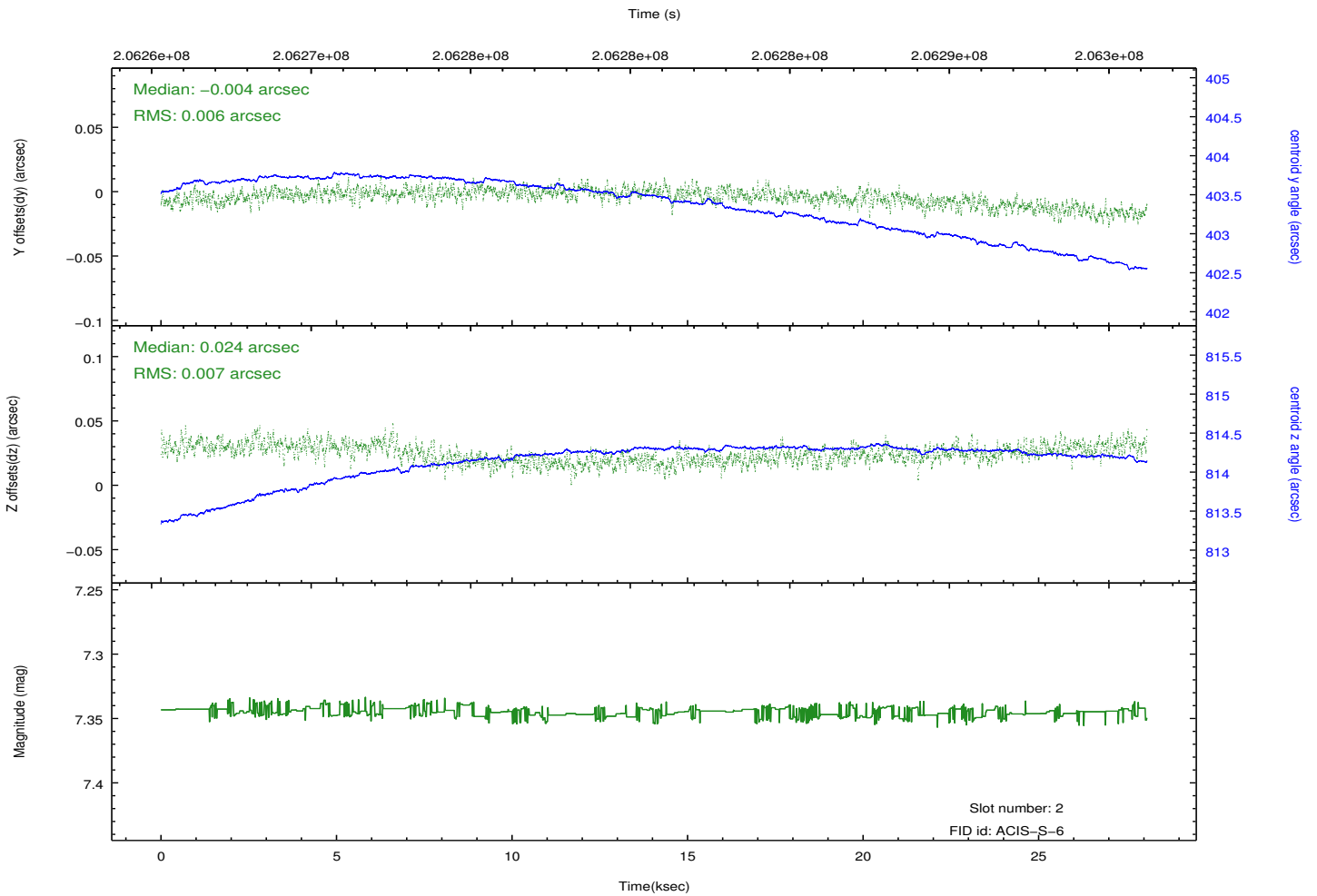
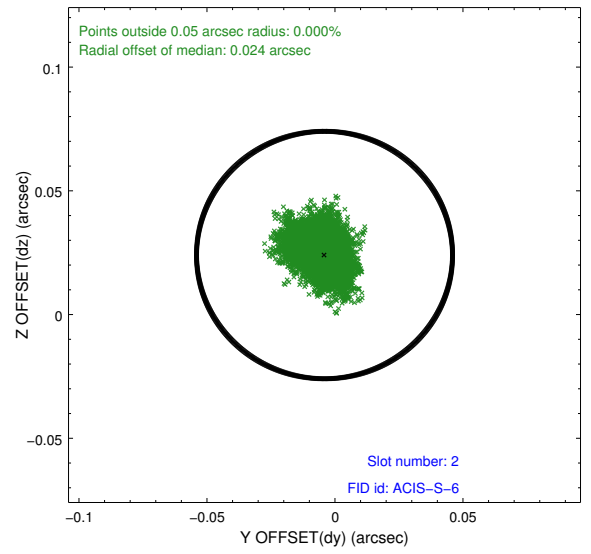
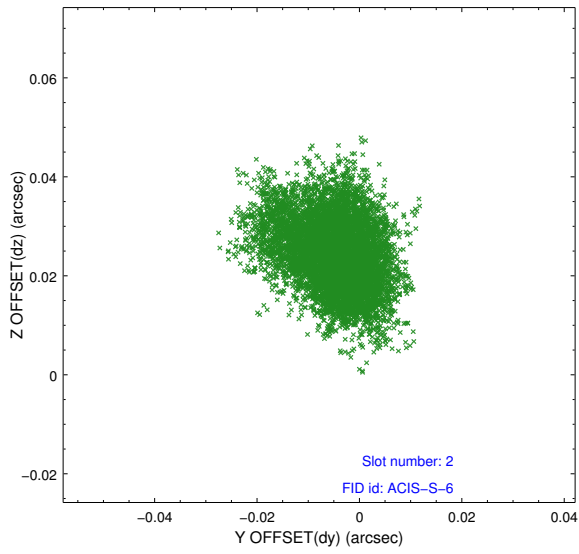
2.5.1 Slot 0



2.5.2 Slot 1



2.5.3 Slot 2



A Summary

A.1 Status

V&V Scientist	Joy Nichols
V&V Date (YYYY-MM-DD)	2012.12.27
V&V Edition	1
V&V Disposition and Status	OK
V&V Charge Time	28.081

A.2 Comments