

# V&V Reference Report

## L2 ASCDS Version : 8.5

Observation 4664 - L2 Version 3  
Chandra X-Ray Center

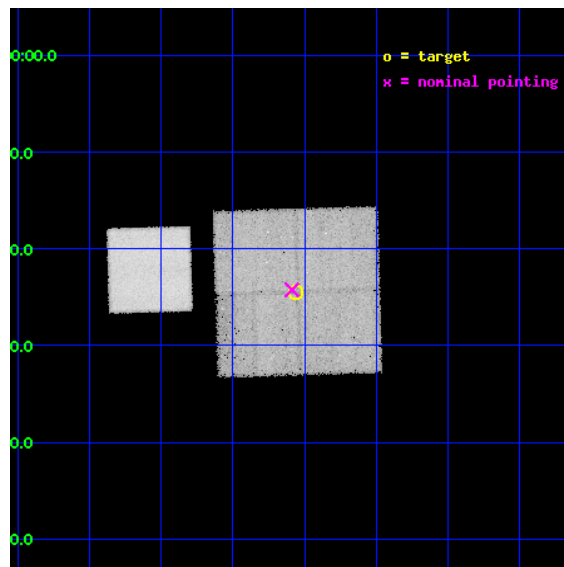
L2 Processing Date : Dec 8 2012

## Contents

<b>1</b>	<b>Front</b>	<b>2</b>
<b>2</b>	<b>OBI</b>	<b>3</b>
2.1	OBI . . . . .	3
2.1.1	Images . . . . .	3
2.1.2	Bias . . . . .	3
2.1.3	Parameters . . . . .	4
2.1.4	Events . . . . .	4
2.2	Compared Parameters . . . . .	5
2.3	Aspect . . . . .	6
2.4	Star Slots . . . . .	9
2.4.1	Slot 3 . . . . .	9
2.4.2	Slot 4 . . . . .	10
2.4.3	Slot 5 . . . . .	11
2.4.4	Slot 6 . . . . .	12
2.4.5	Slot 7 . . . . .	13
2.5	FID Slots . . . . .	14
2.5.1	Slot 0 . . . . .	14
2.5.2	Slot 1 . . . . .	15
2.5.3	Slot 2 . . . . .	16
<b>A</b>	<b>Summary</b>	<b>17</b>
A.1	Status . . . . .	17
A.2	Comments . . . . .	17

# 1 Front

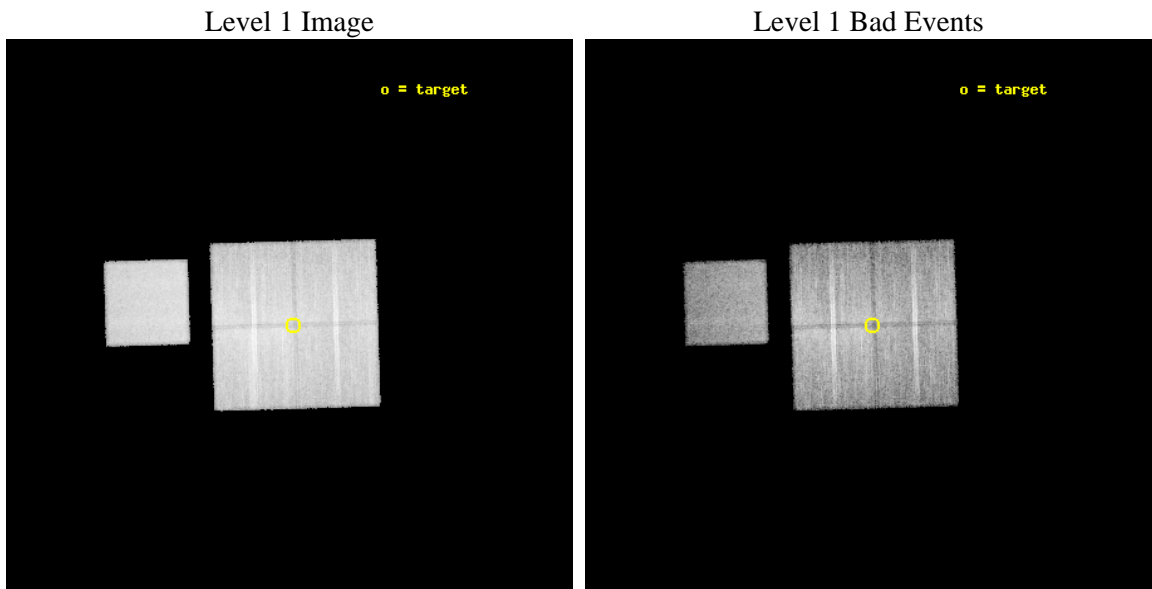
seq_num	500483	Sequence number
obs_id	4664	Observation id
title	The Energetics and Host Galaxies of X-Ray Flashes	Proposal title
observer	Prof. Derek Fox	Principal investigator
object	XRF040825	Source name
dtcycle	0	&#160
cycle	P	events from which exps? Prim/Second/Both
ra_targ	341.640417	Observer's specified target RA [deg]
dec_targ	-2.407917	Observer's specified target Dec [deg]
ra_nom	341.64706008725	Nominal RA [deg]
dec_nom	-2.4040685636985	Nominal Dec [deg]
roll_nom	268.36014125163	Nominal Roll [deg]
revision	3	Processing version of data
ontime	18172.15898478	Sum of GTIs [s]
livetime	17934.726349495	Livetime [s]
ontime0	18172.159004778	Sum of GTIs [s]
ontime1	18172.15898478	Sum of GTIs [s]
ontime2	18172.159004688	Sum of GTIs [s]
ontime3	18172.15898478	Sum of GTIs [s]
ontime7	18175.299965024	Sum of GTIs [s]
l2events	196342	Number of level 2 events



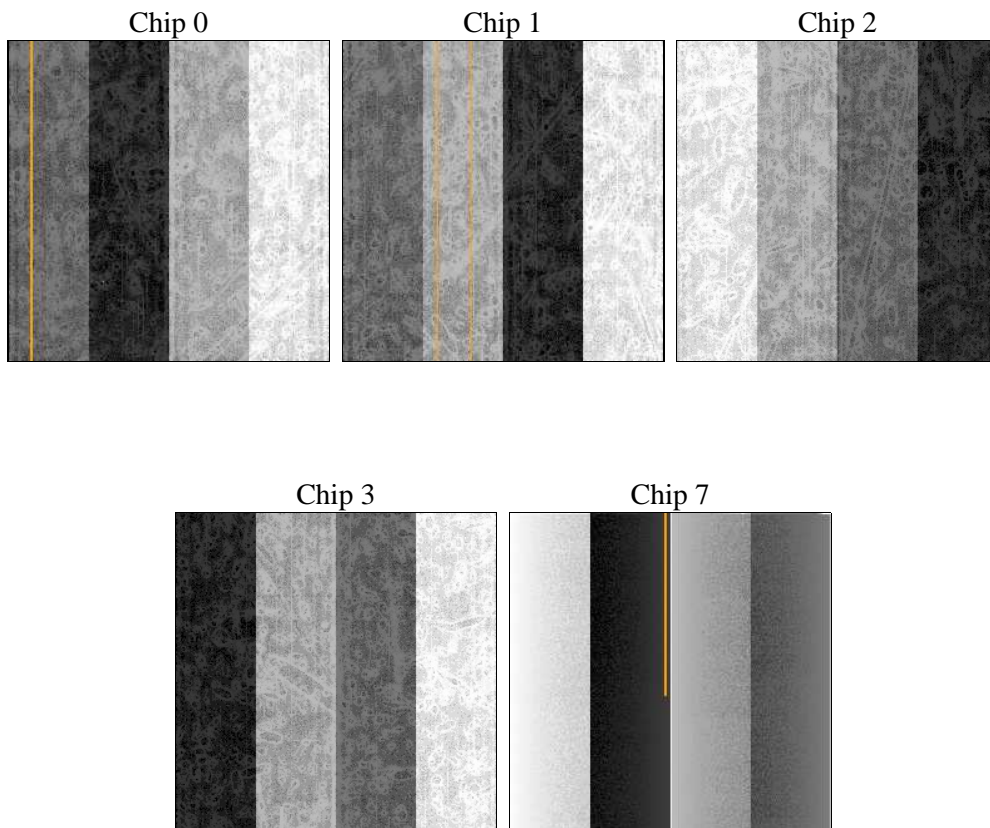
## 2 OBI

### 2.1 OBI

#### 2.1.1 Images



#### 2.1.2 Bias



### 2.1.3 Parameters

obi_num	1	Obi number	sched_exp_time	18000.000000	[s] Scheduled observation exposure time
ascdsver	8.5	Processing system revision	ontime	18172.15898478	Sum of GTIs [s]
caldbver	4.5.4	&#160	ontime0	18172.159004778	Sum of GTIs [s]
date	2012-12-09T01:09:58	Date and time of file creation	ontime1	18172.15898478	Sum of GTIs [s]
revision	3	Processing version of data	ontime2	18172.159004688	Sum of GTIs [s]
			ontime3	18172.15898478	Sum of GTIs [s]
			ontime7	18175.299965024	Sum of GTIs [s]
			l1events	911987	Number of level 1 events

### 2.1.4 Events

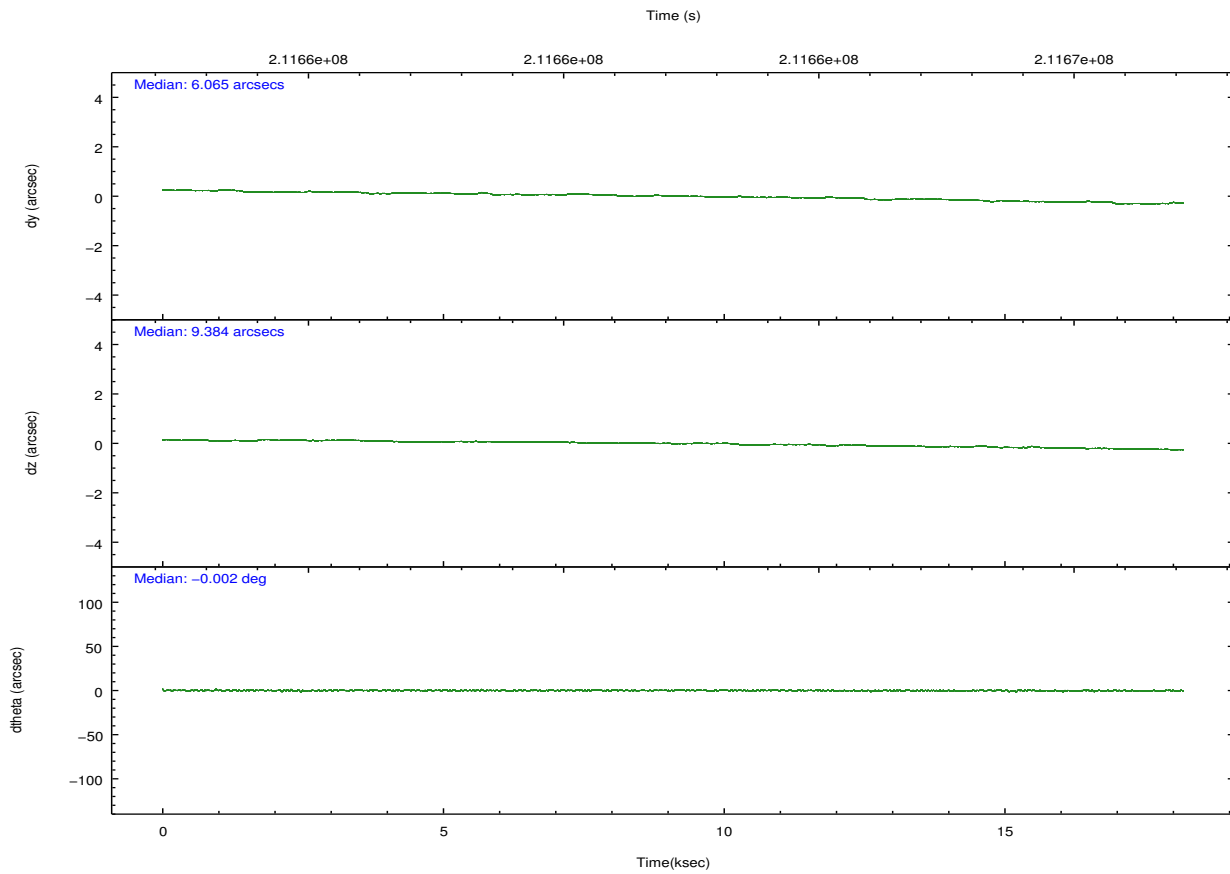
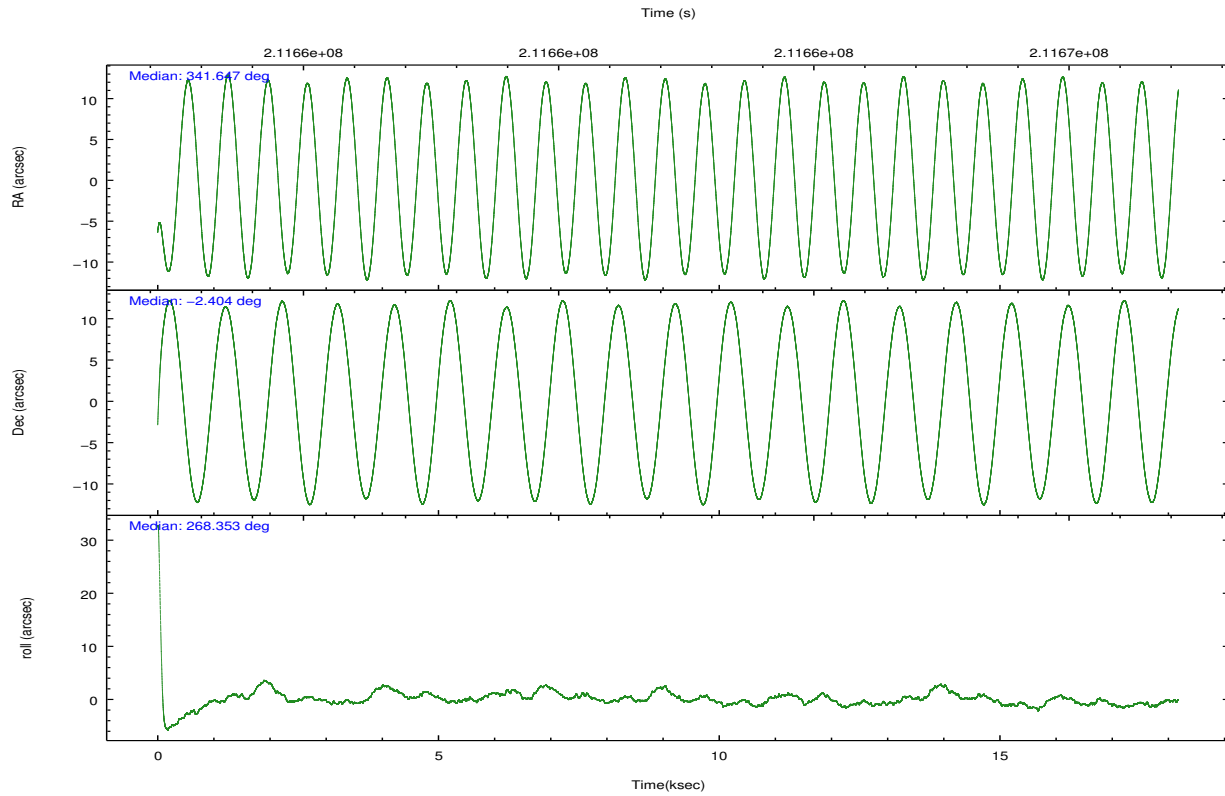
	ccd 0	ccd 1	ccd 2	ccd 3	ccd 7
level 1 events	160963	172163	200214	185707	192940
rejected events	124960	136859	162688	152721	109839
rejected %	77%	79%	81%	82%	56%

	ccd 0	ccd 1	ccd 2	ccd 3	ccd 7
grade 0 events	14487	11843	16817	12617	7490
	9%	6%	8%	6%	3%
grade 1 events	133	81	164	107	297
	0%	0%	0%	0%	0%
grade 2 events	10977	11790	9817	9989	17840
	6%	6%	4%	5%	9%
grade 3 events	1734	1965	1609	1705	7606
	1%	1%	0%	0%	3%
grade 4 events	1762	1797	2740	1713	7536
	1%	1%	1%	0%	3%
grade 5 events	5287	5478	5061	5759	17652
	3%	3%	2%	3%	9%
grade 6 events	7445	8279	6914	7287	43636
	4%	4%	3%	3%	22%
grade 7 events	119138	130930	157092	146530	90883
	74%	76%	78%	78%	47%

## 2.2 Compared Parameters

Parameter	Planned	Actual	Parameter	Planned	Actual
Instrument	ACIS	ACIS	Obspar format version number	7	7
Detector	ACIS-01237	ACIS-01237	Obspar file type	PREDICTED	ACTUAL
Grating	NONE	NONE	Obspar update status	NONE	UPDATED
Data mode	VFAINT	VFAINT	Number of optional ACIS chips dropped	0	0
Observation mode	POINTING	POINTING	On-chip summing requested	N	N
[deg] Pointing RA	341.633970	341.6470600872486	Subarray requested	NONE	NONE
[deg] Pointing Dec	-2.380029	-2.404068563698483	Alternating exposures requested	N	N
[deg] Pointing Roll	268.150880	268.3601412516322	[s] Primary exposure time	0.000000	3.1
[mm] SIM focus pos	-0.782348	-0.7809083437167272			
[mm] SIM defocus	0	0.001439871863259334			
[mm] SIM translation stage pos	-233.592463	-233.5874344608287			
[mm] SIM translation stage offset	0	-0.005018542100998502			
[s] Observation start time (MET)	211653235.184000	211652127.95861			
Observation start date	2004-09-15T16:32:51	2004-09-15T16:15:27			
[s] Observation end time (MET)	211671235.184000	211672661.78453			
Observation end date	2004-09-15T21:32:51	2004-09-15T21:57:41			
Read mode	TIMED	TIMED			

## 2.3 Aspect



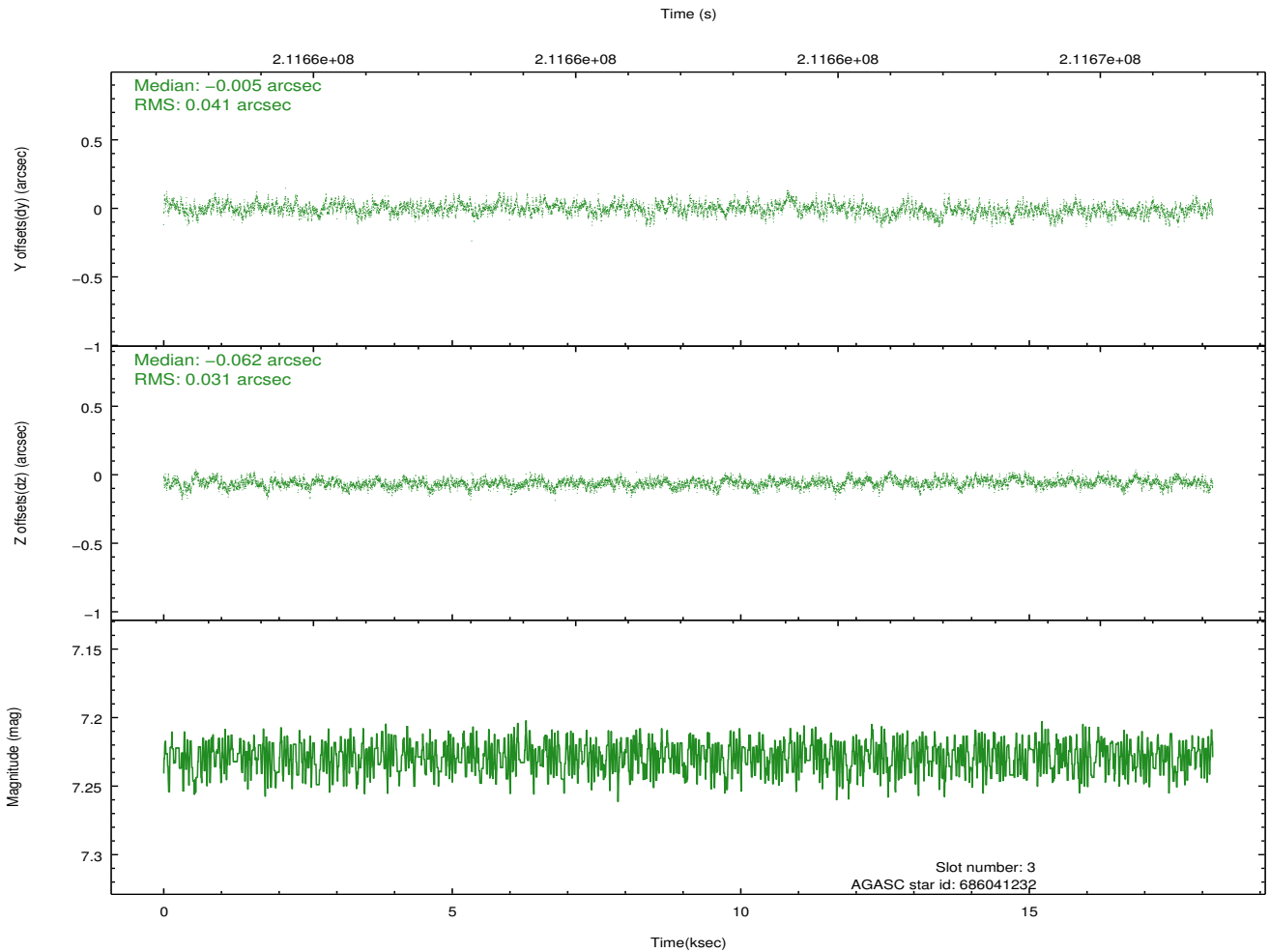
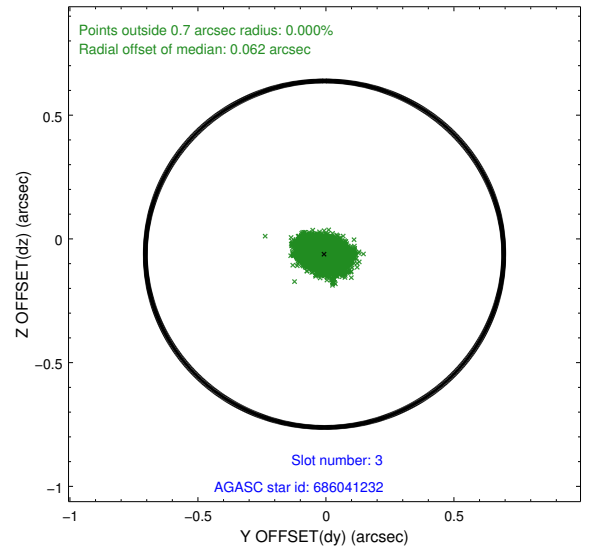
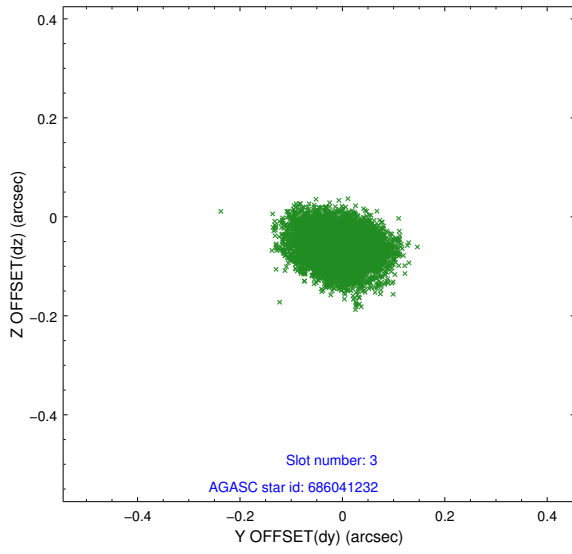
### Slot Statistics

slot	status	id	mag	n_pts	med_dy	med_dz	dr1	dr2	ra	dec	mean_y	mean_z
0	FID	ACIS-I-1	7.24	4435	-0.003	0.041	0.011	0.020	0.000000	0.000000	933.66	-832.77
1	FID	ACIS-I-5	7.23	4434	-0.152	0.026	0.011	0.022	0.000000	0.000000	-1814.49	1064.57
2	FID	ACIS-I-6	7.26	4434	0.064	0.004	0.008	0.013	0.000000	0.000000	399.01	1709.32
3	GUIDE	686041232	7.23	8870	-0.005	-0.062	0.054	0.091	341.873976	-1.788783	-2154.95	794.43
4	GUIDE	686424624	7.87	8869	0.073	-0.096	0.058	0.092	341.803081	-2.709736	1167.01	647.01
5	GUIDE	686424920	8.95	8869	-0.005	0.012	0.080	0.126	341.978973	-2.573998	658.44	1263.03
6	GUIDE	686425928	8.77	8859	-0.061	0.073	0.072	0.114	341.017068	-2.531540	617.94	-2199.31
7	GUIDE	686426064	9.43	8863	-0.002	0.076	0.106	0.174	341.035207	-2.739354	1363.65	-2109.95

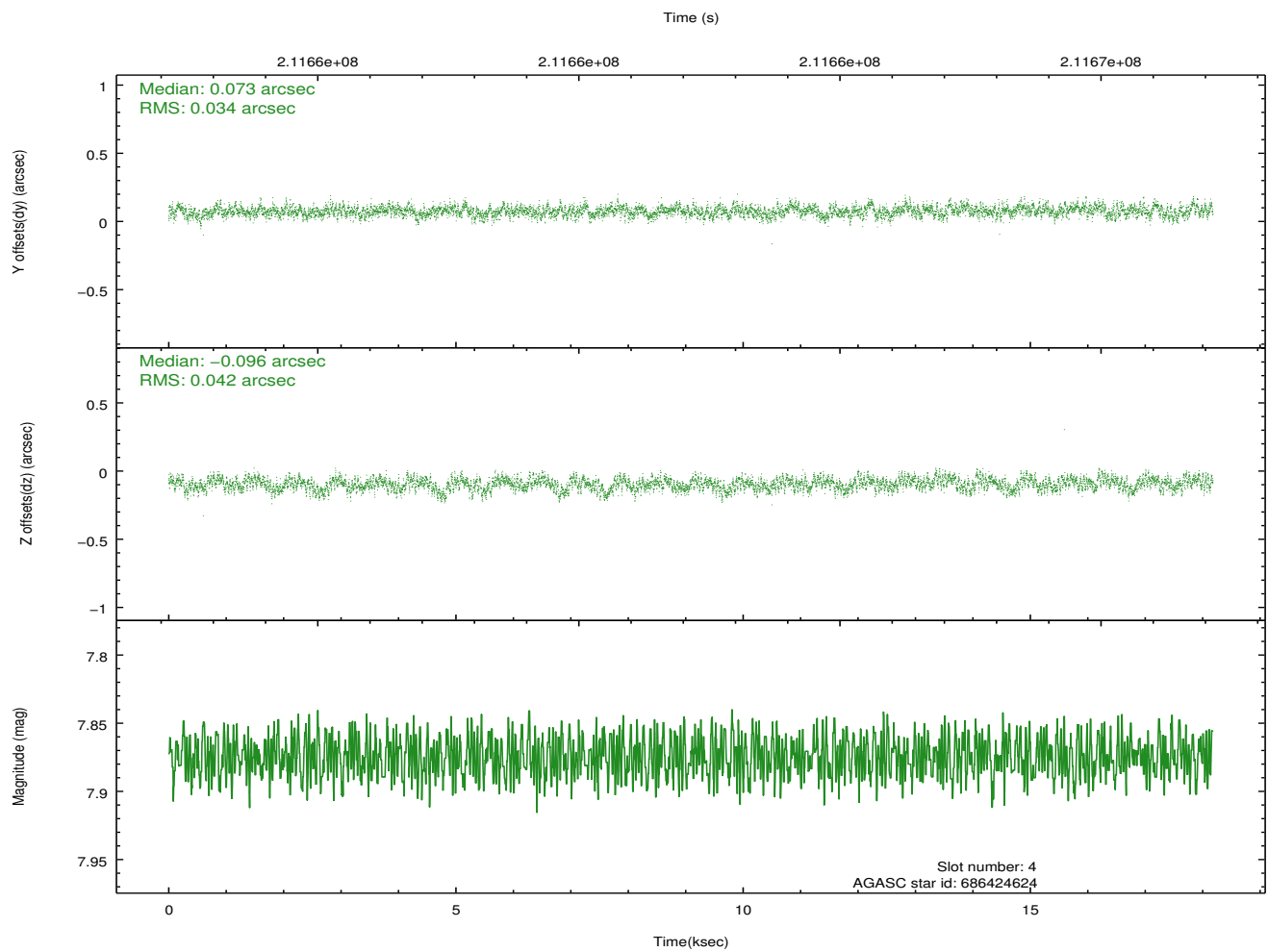
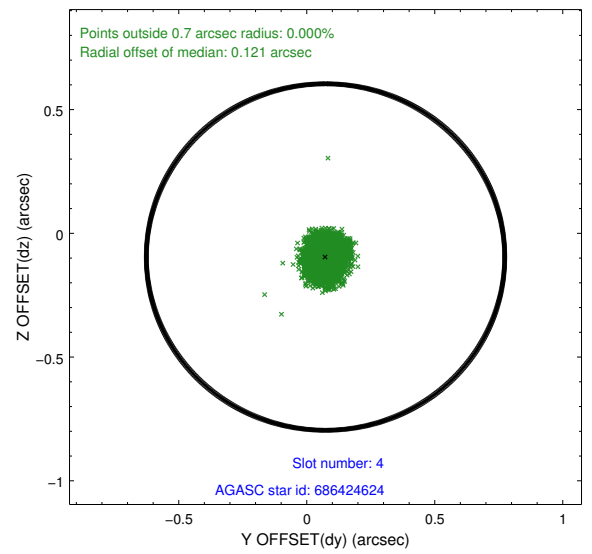
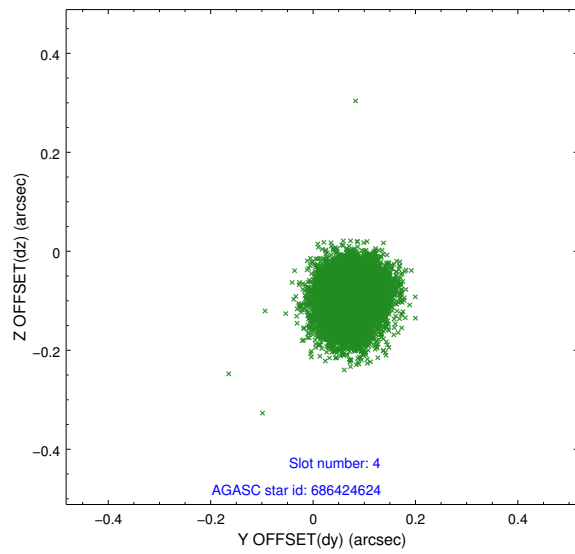
∞

## 2.4 Star Slots

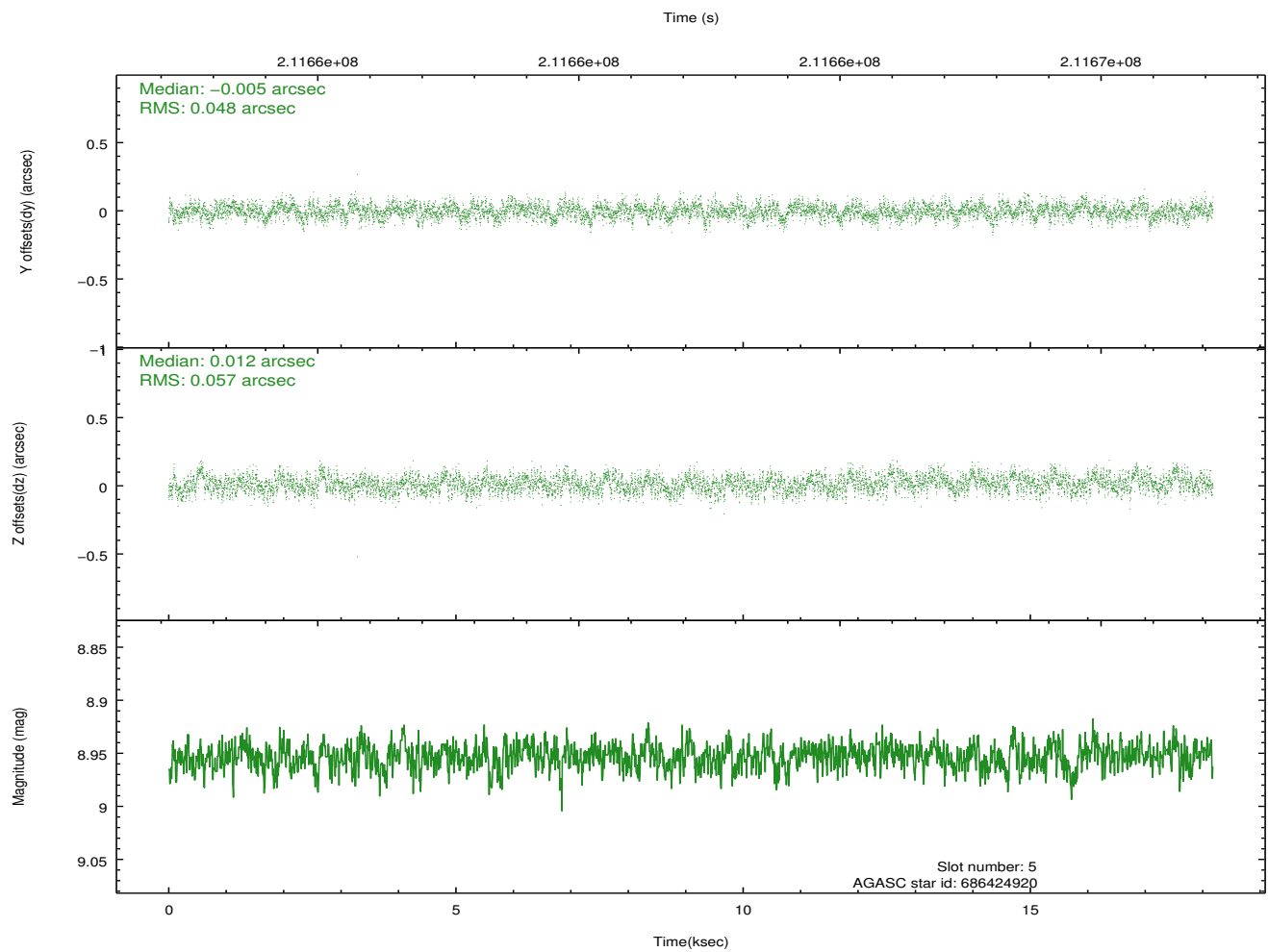
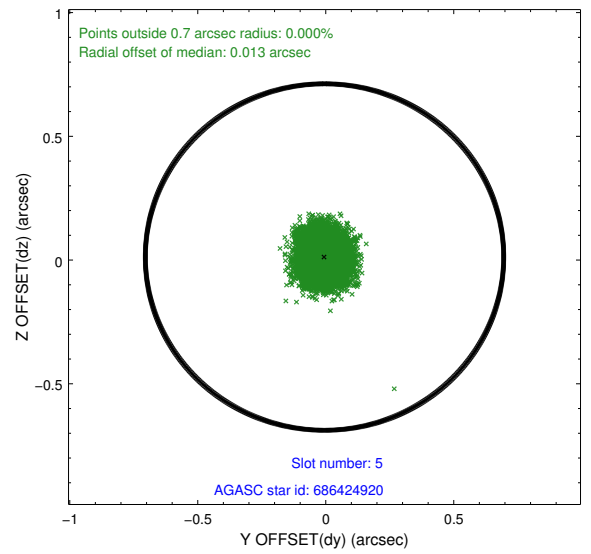
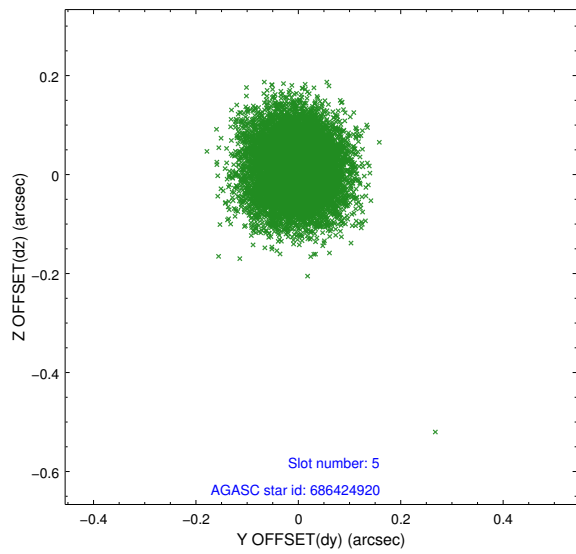
### 2.4.1 Slot 3



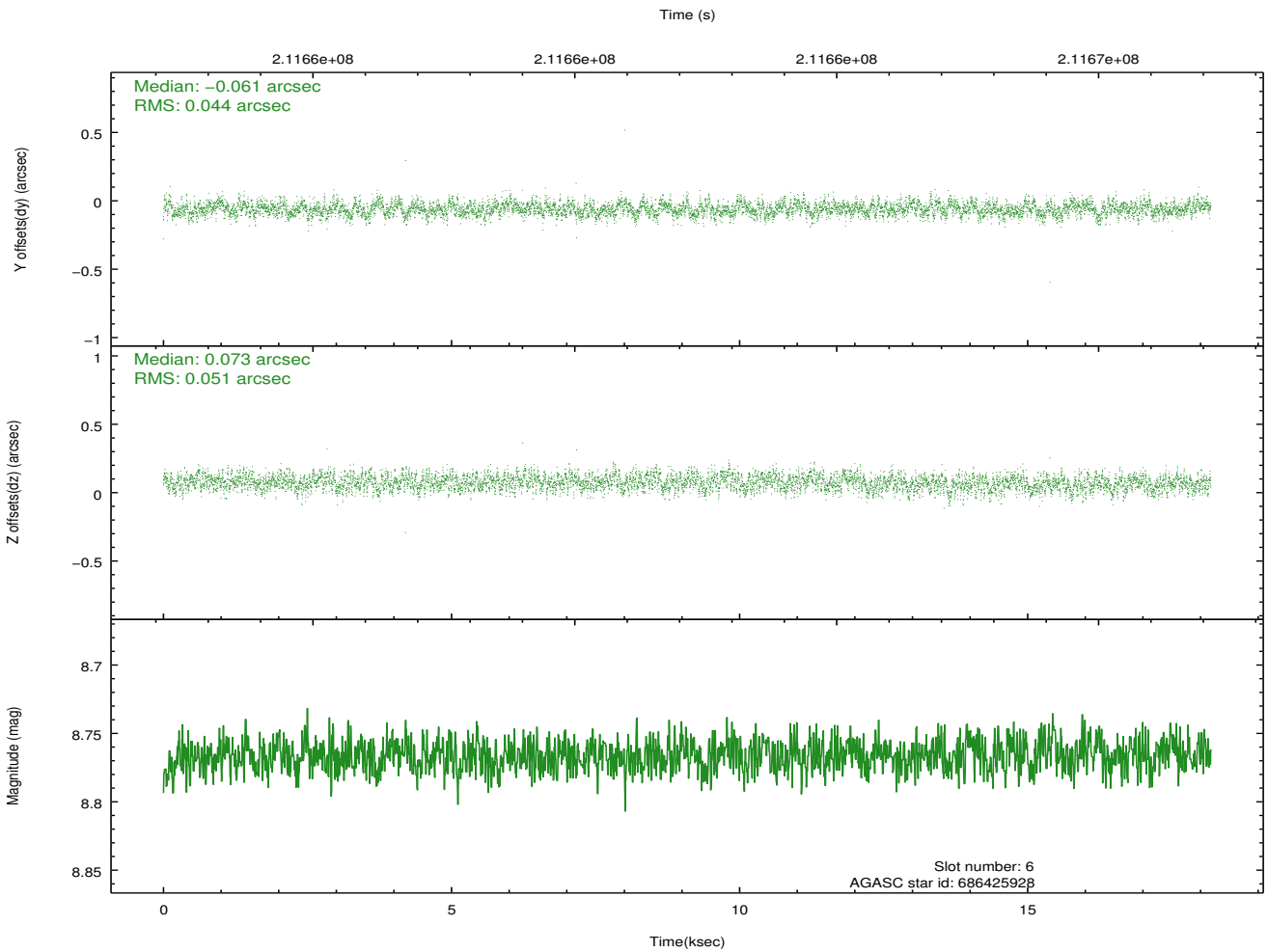
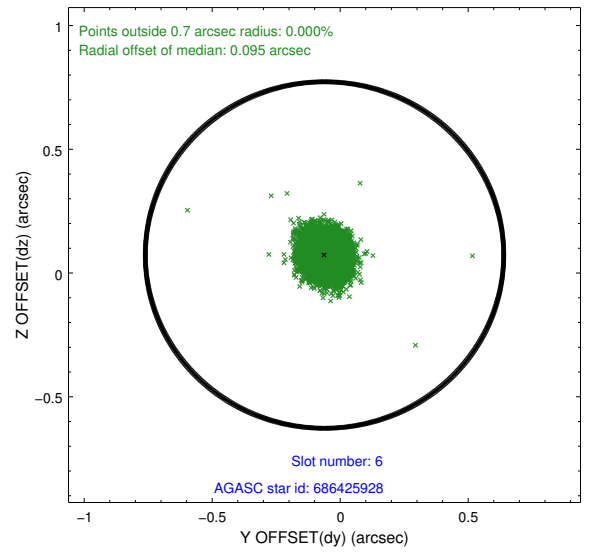
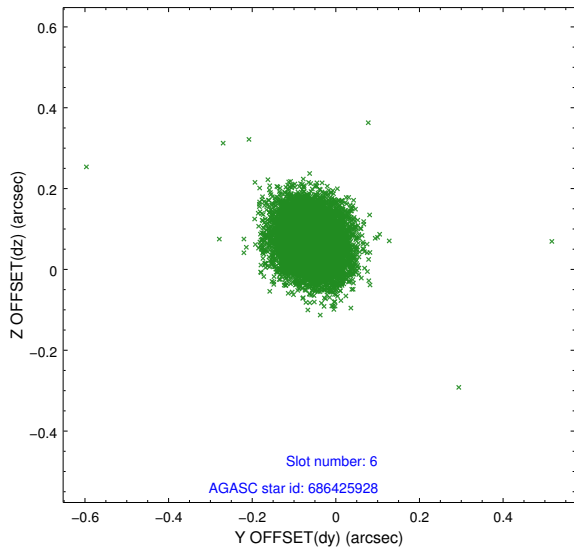
## 2.4.2 Slot 4



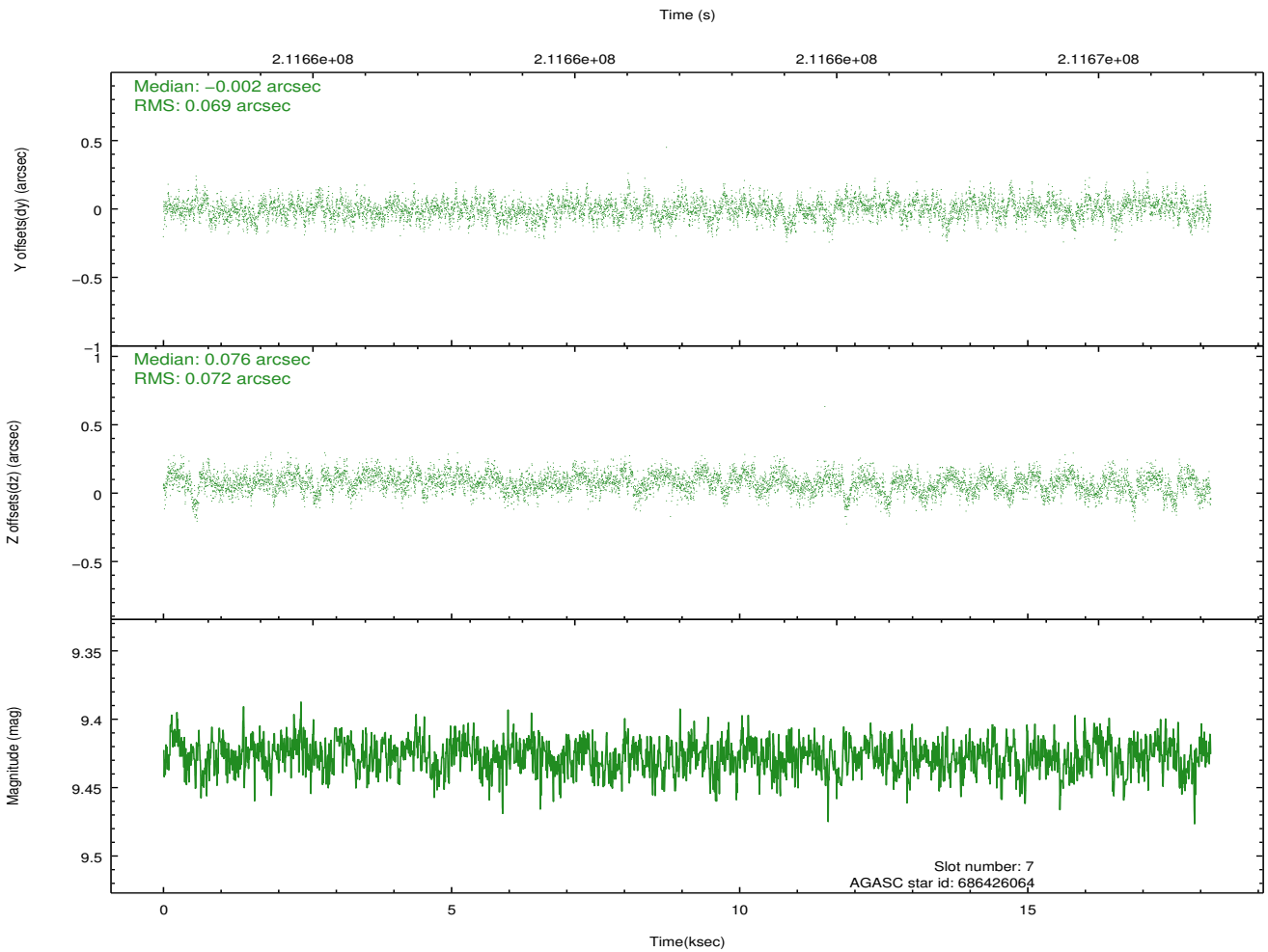
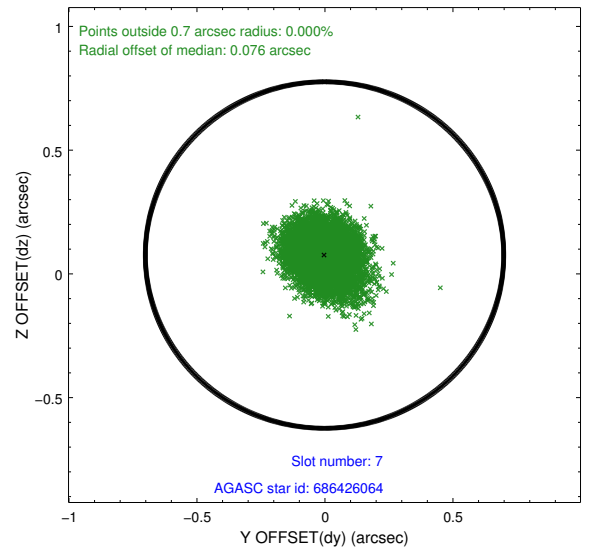
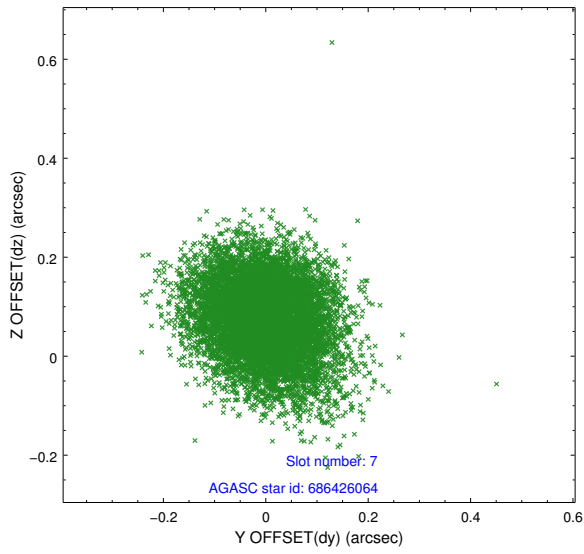
### 2.4.3 Slot 5



### 2.4.4 Slot 6

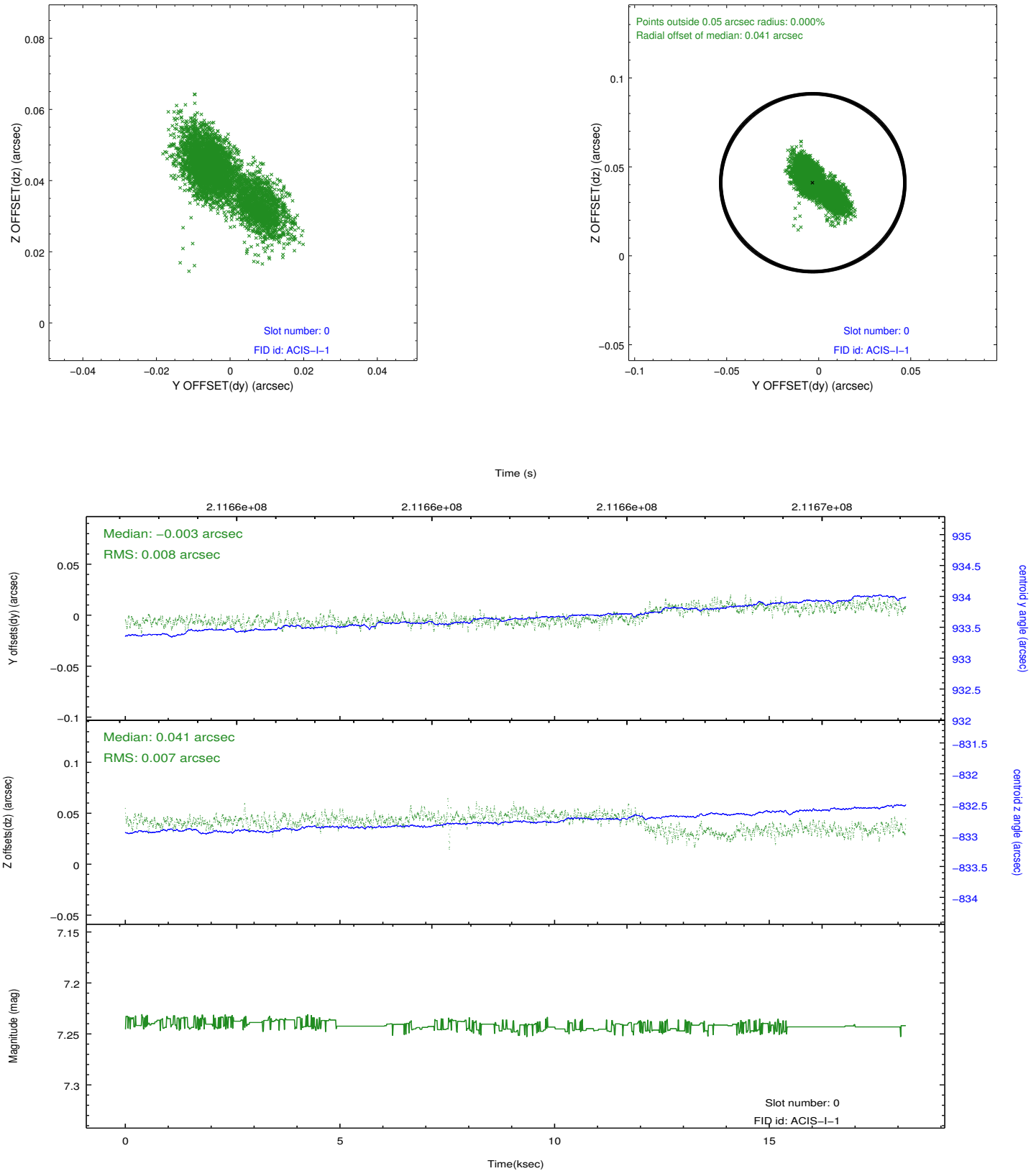


### 2.4.5 Slot 7

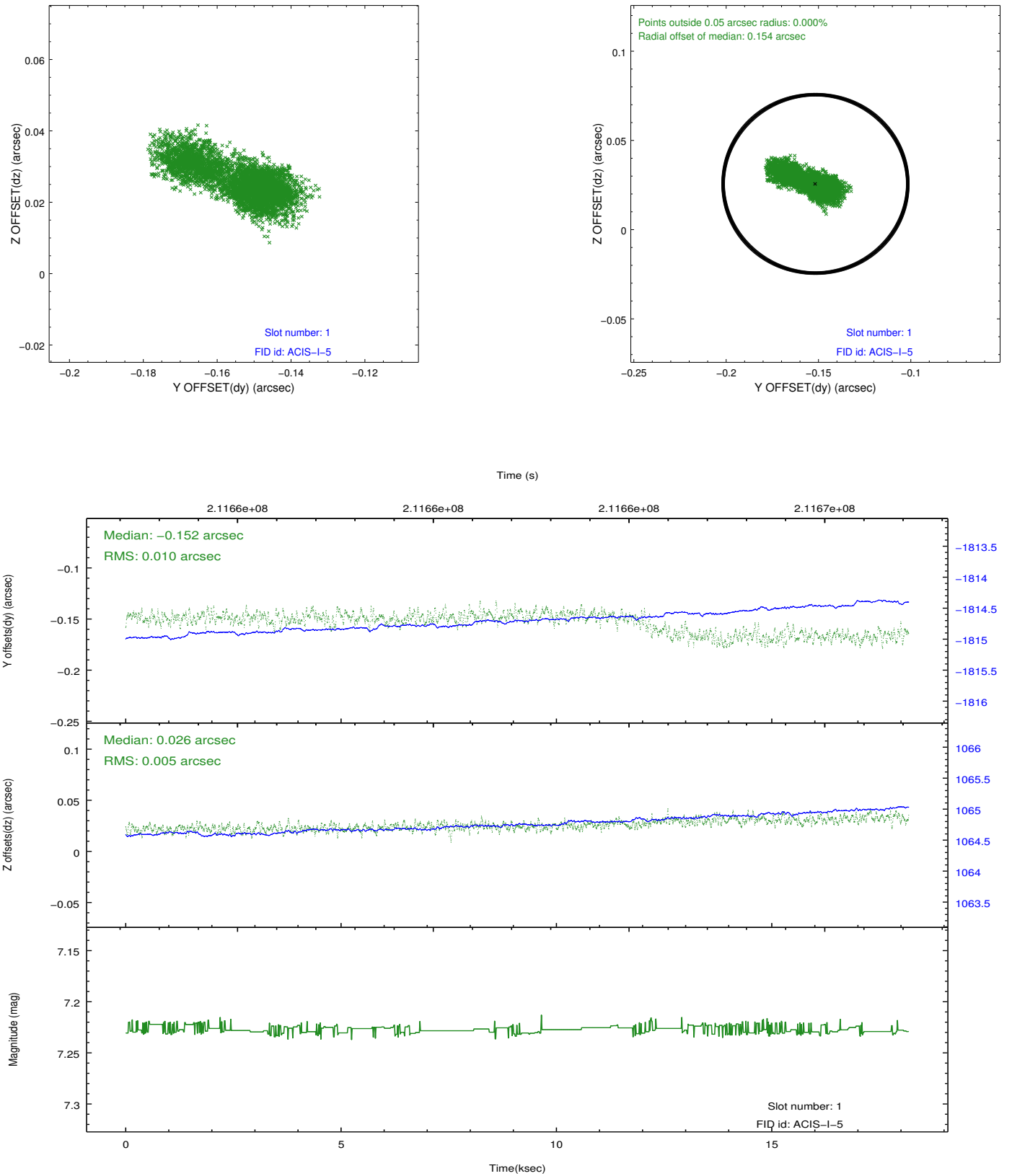


## 2.5 FID Slots

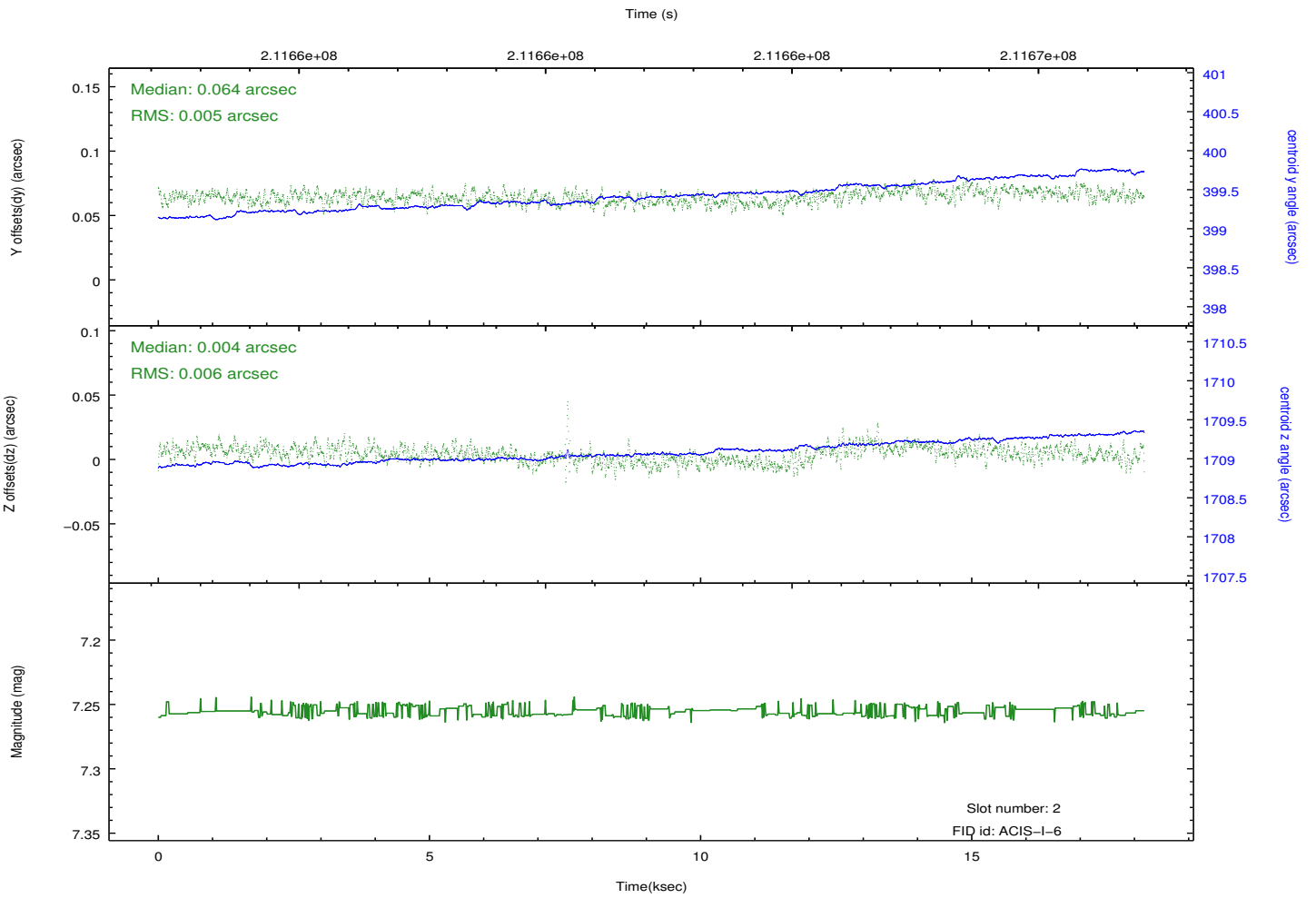
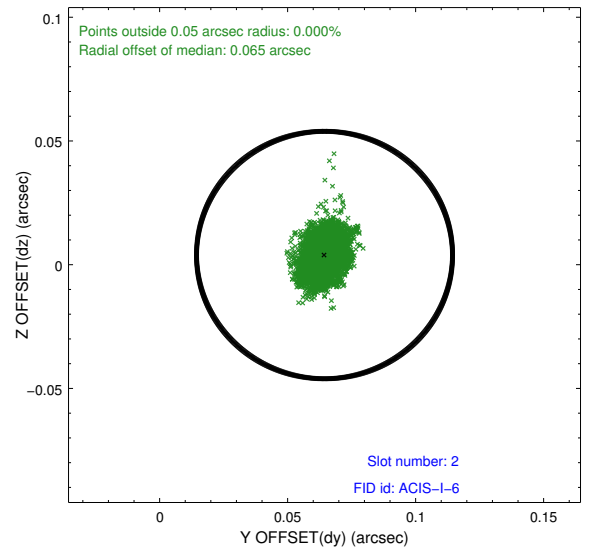
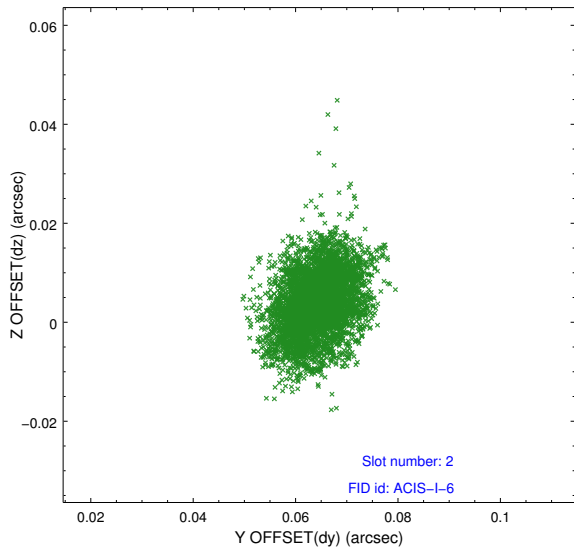
### 2.5.1 Slot 0



## 2.5.2 Slot 1



### 2.5.3 Slot 2



# A Summary

## A.1 Status

V&V Scientist	Joy Nichols
V&V Date (YYYY-MM-DD)	2013.01.17
V&V Edition	1
V&V Disposition and Status	OK
V&V Charge Time	18.172

## A.2 Comments

Target falls into CCD chip gap in this observation. A custom dither of 11.988 arcsec was used to mitigate the inter-chip gap space, since the coordinates are poorly known.