

V&V Reference Report

L2 ASCDS Version : 8.4.5

Observation 4684 - L2 Version 3
Chandra X-Ray Center

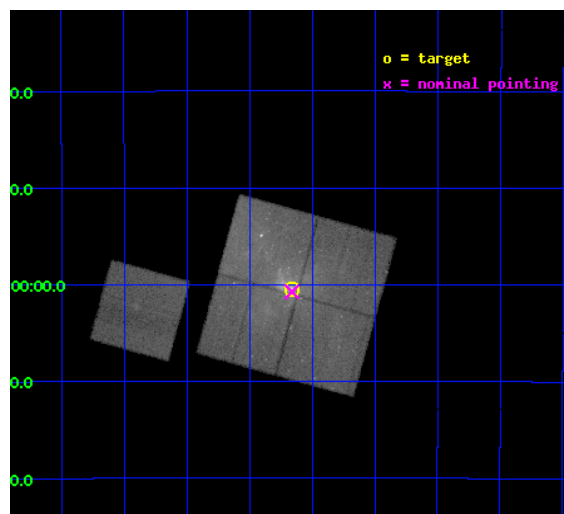
L2 Processing Date : Dec 3 2012

Contents

1	Front	2
2	OBI	3
2.1	OBI	3
2.1.1	Images	3
2.1.2	Bias	3
2.1.3	Parameters	4
2.1.4	Events	4
2.2	Compared Parameters	5
2.3	Aspect	6
2.4	Star Slots	9
2.4.1	Slot 3	9
2.4.2	Slot 4	10
2.4.3	Slot 5	11
2.4.4	Slot 6	12
2.4.5	Slot 7	13
2.5	FID Slots	14
2.5.1	Slot 0	14
2.5.2	Slot 1	15
2.5.3	Slot 2	16
A	Summary	17
A.1	Status	17
A.2	Comments	17

1 Front

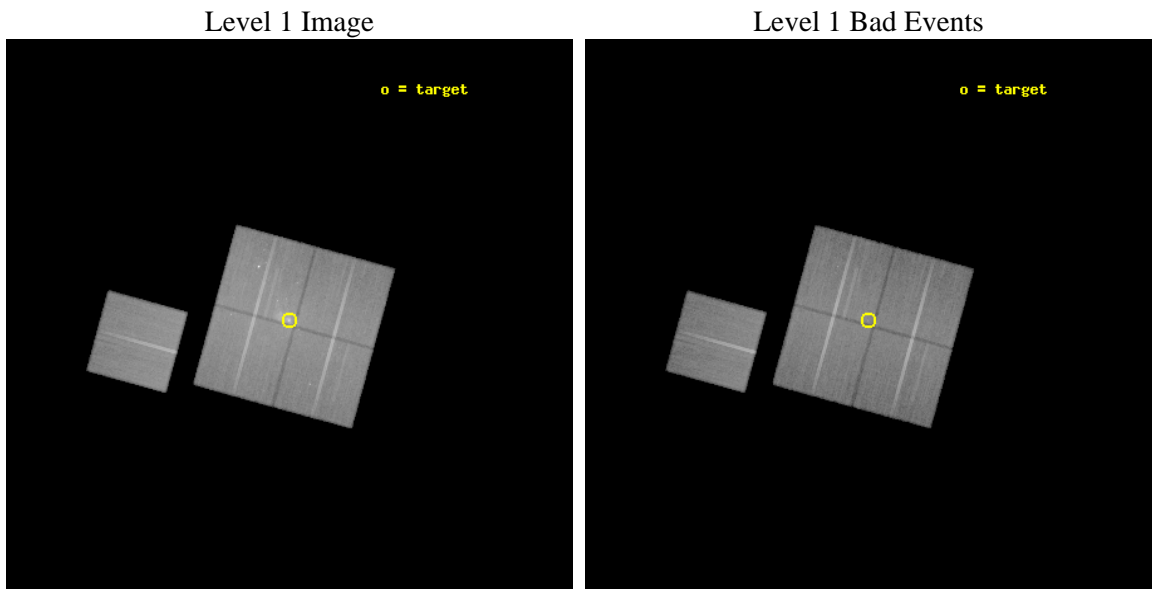
seq_num	600339	Sequence number
obs_id	4684	Observation id
title	Simultaneous X-ray, Sub-millimeter, and Mid-Infrared Monitoring of Sagittarius A*	Proposal title
observer	Professor Gordon Garmire	Principal investigator
object	Sgr A*	Source name
dtycle	0	
cycle	P	events from which exps? Prim/Second/Both
ra_targ	266.416667	Observer's specified target RA [deg]
dec_targ	-29.007778	Observer's specified target Dec [deg]
ra_nom	266.41597332232	Nominal RA [deg]
dec_nom	-29.012389698633	Nominal Dec [deg]
roll_nom	285.36857206604	Nominal Roll [deg]
revision	3	Processing version of data
ontime	50182.799903482	Sum of GTIs [s]
livetime	49527.124678703	Livetime [s]
ontime0	50176.517953008	Sum of GTIs [s]
ontime1	50182.799903482	Sum of GTIs [s]
ontime2	50179.658933222	Sum of GTIs [s]
ontime3	50182.799903482	Sum of GTIs [s]
ontime6	50182.799903482	Sum of GTIs [s]
l2events	409044	Number of level 2 events



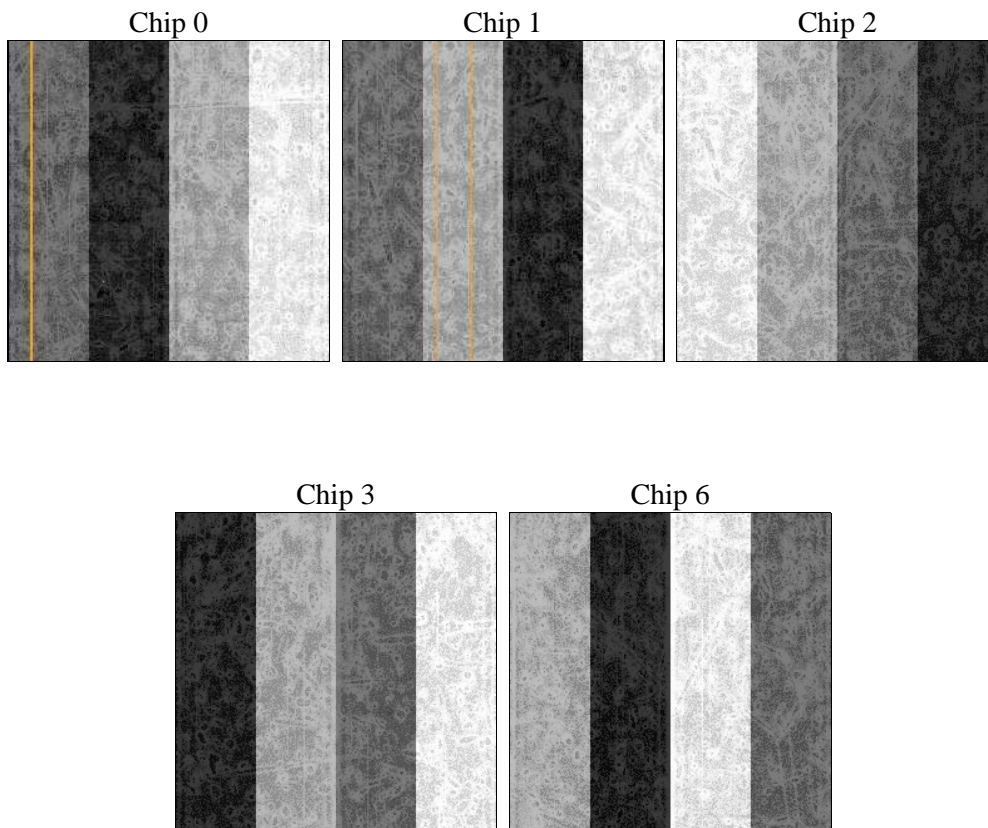
2 OBI

2.1 OBI

2.1.1 Images



2.1.2 Bias



2.1.3 Parameters

obi_num	0	Obi number	sched_exp_time	50000.000000	[s] Scheduled observation exposure time
ascdsver	8.4.5	Processing system revision	ontime	50182.799903482	Sum of GTIs [s]
caldbver	4.5.2	 	ontime0	50176.517953008	Sum of GTIs [s]
date	2012-12-03T21:11:22	Date and time of file creation	ontime1	50182.799903482	Sum of GTIs [s]
revision	3	Processing version of data	ontime2	50179.658933222	Sum of GTIs [s]
			ontime3	50182.799903482	Sum of GTIs [s]
			ontime6	50182.799903482	Sum of GTIs [s]
			l1events	2093296	Number of level 1 events

2.1.4 Events

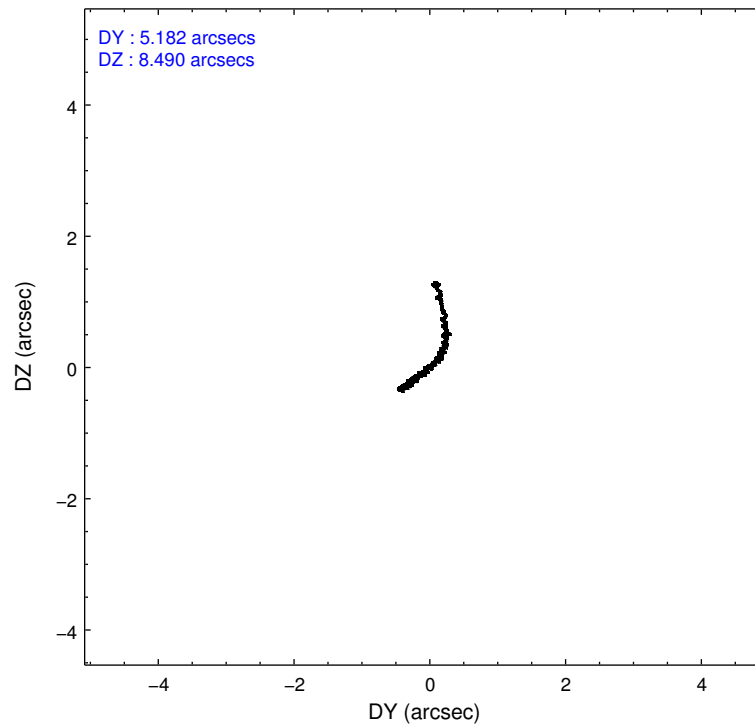
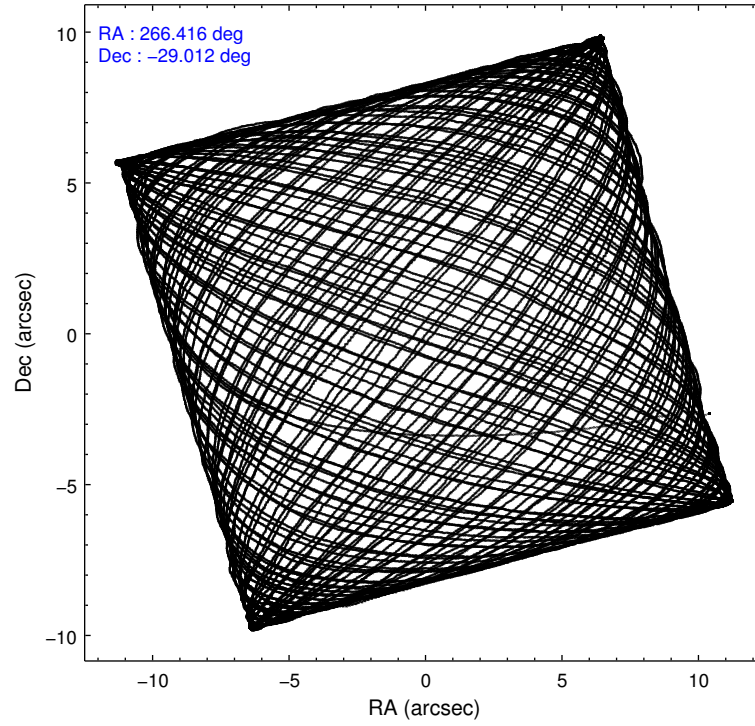
	ccd 0	ccd 1	ccd 2	ccd 3	ccd 6
level 1 events	384288	394100	431325	486158	397425
rejected events	305916	313006	340942	340279	342339
rejected %	79%	79%	79%	69%	86%

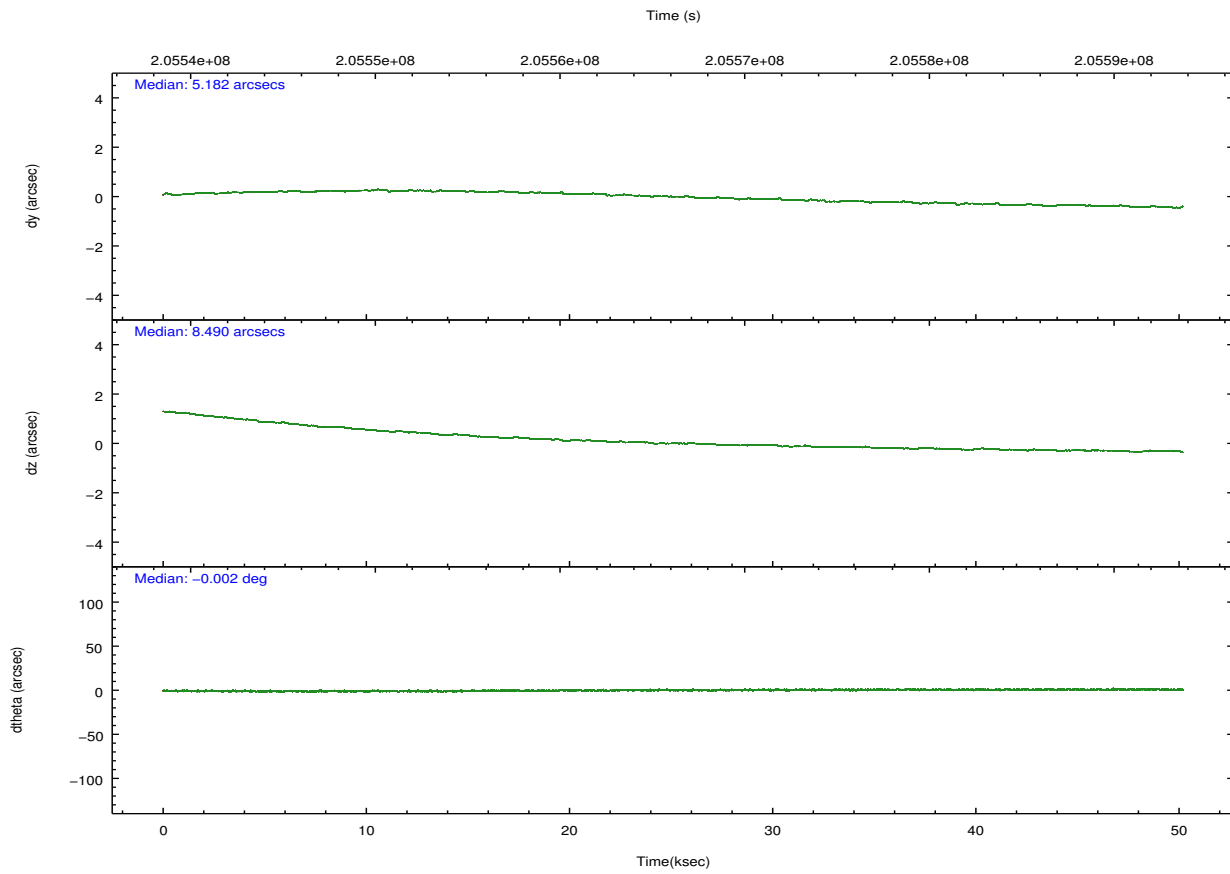
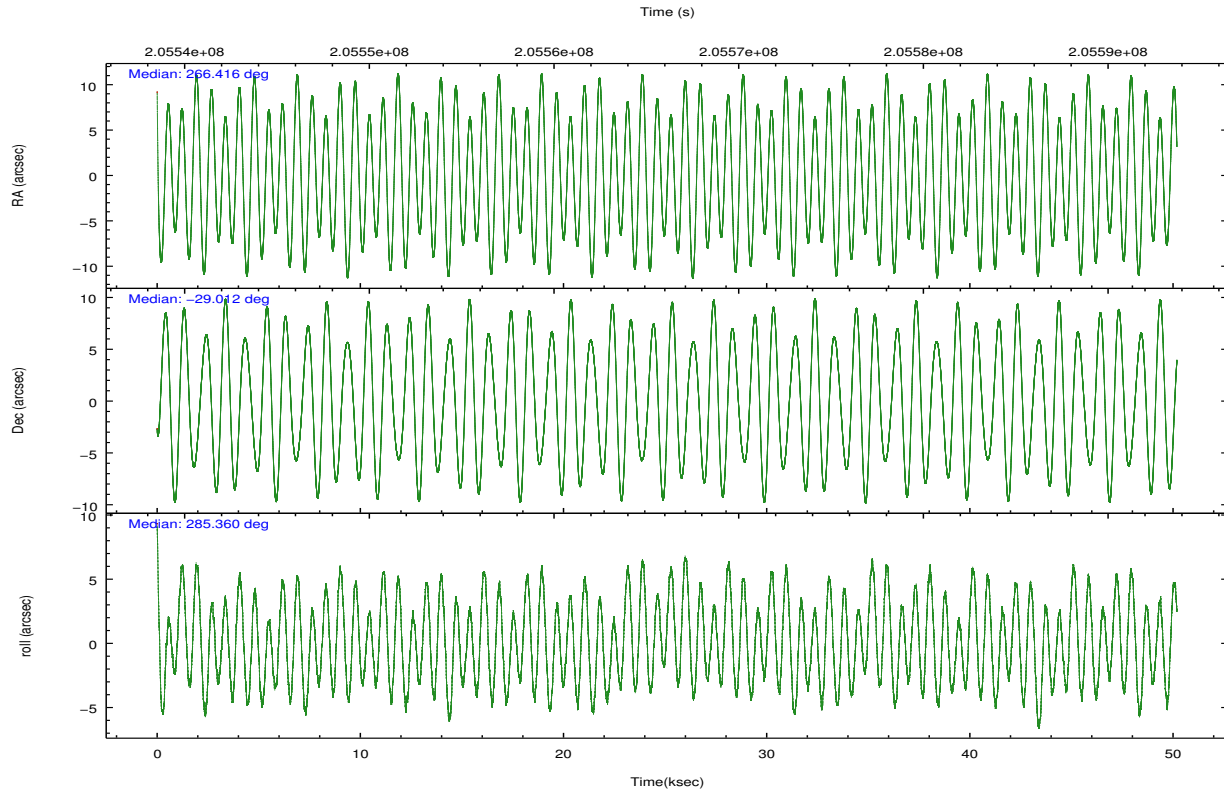
	ccd 0	ccd 1	ccd 2	ccd 3	ccd 6
grade 0 events	42017	41614	52234	89744	25333
	10%	10%	12%	18%	6%
grade 1 events	352	321	451	773	207
	0%	0%	0%	0%	0%
grade 2 events	14206	14828	15121	22422	10630
	3%	3%	3%	4%	2%
grade 3 events	6093	6320	6507	9314	4912
	1%	1%	1%	1%	1%
grade 4 events	5736	6454	6237	9355	4745
	1%	1%	1%	1%	1%
grade 5 events	15522	16489	15162	17616	17597
	4%	4%	3%	3%	4%
grade 6 events	10400	11953	10394	15180	9520
	2%	3%	2%	3%	2%
grade 7 events	289962	296121	325219	321754	324481
	75%	75%	75%	66%	81%

2.2 Compared Parameters

Parameter	Planned	Actual	Parameter	Planned	Actual
Instrument	ACIS	ACIS	Obspar format version number	7	7
Detector	ACIS-01236	ACIS-01236	Obspar file type	PREDICTED	ACTUAL
Grating	NONE	NONE	Obspar update status	NONE	UPDATED
Data mode	FAINT	FAINT	Number of optional ACIS chips dropped	0	0
Observation mode	POINTING	POINTING	On-chip summing requested	N	N
[deg] Pointing RA	266.393604	266.4159733223221	Subarray requested	NONE	NONE
[deg] Pointing Dec	-28.993212	-29.01238969863341	Alternating exposures requested	N	N
[deg] Pointing Roll	285.149045	285.3685720660399	[s] Primary exposure time	0.000000	3.1
[s] Window start time (MET)	205541164.184000	205541164.184000			
[s] Window stop time (MET)	205591384.184000	205591384.184000			
[mm] SIM focus pos	-0.782348	-0.7809083437167272			
[mm] SIM defocus	0	0.001439871863259334			
[mm] SIM translation stage pos	-233.592463	-233.5874344608287			
[mm] SIM translation stage offset	0	-0.005018542100998502			
[s] Observation start time (MET)	205541216.184000	205540197.72418			
Observation start date	2004-07-06T22:45:52	2004-07-06T22:29:57			
[s] Observation end time (MET)	205591216.184000	205591986.87648			
Observation end date	2004-07-07T12:39:12	2004-07-07T12:53:06			
Read mode	TIMED	TIMED			

2.3 Aspect



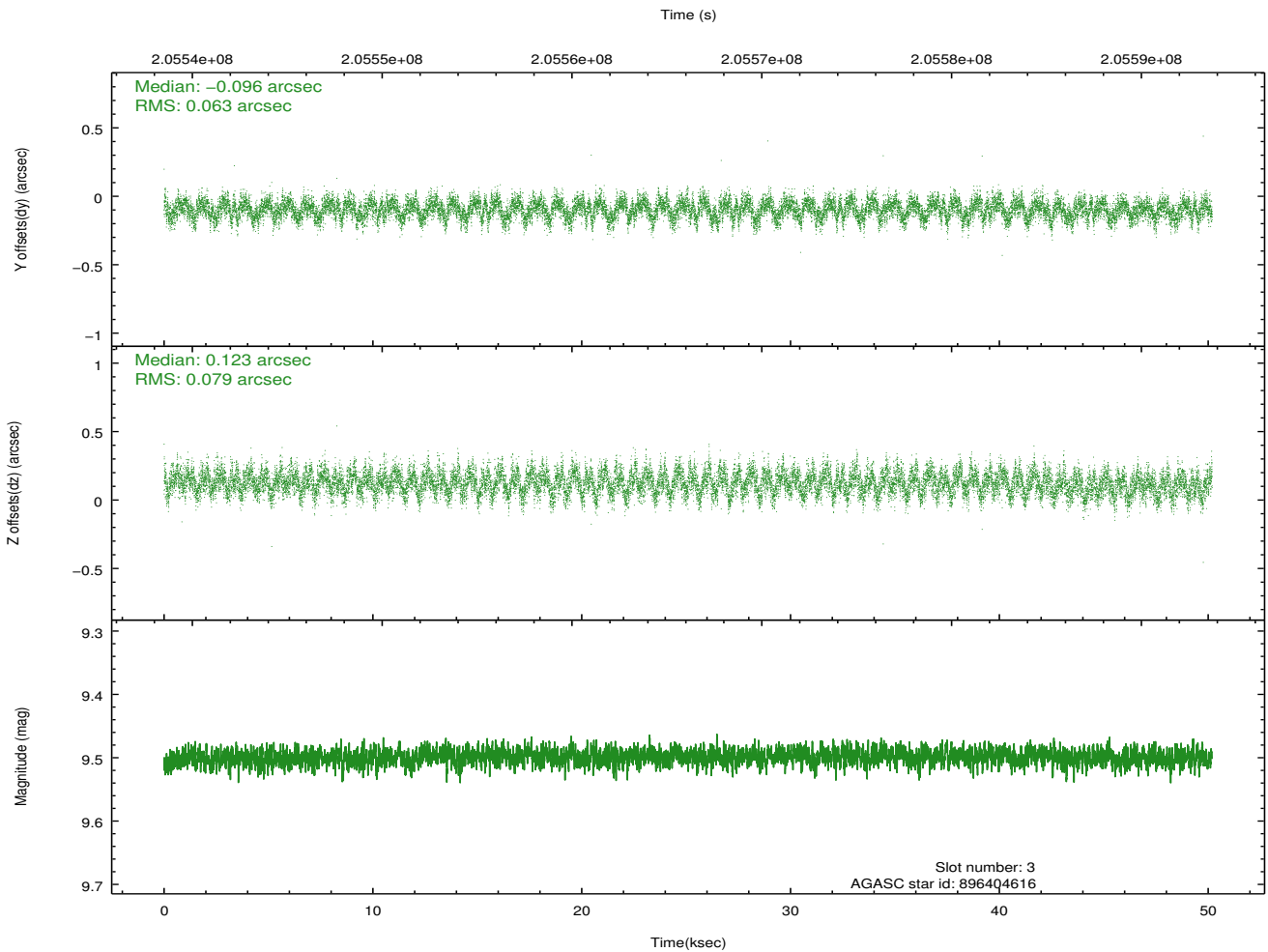
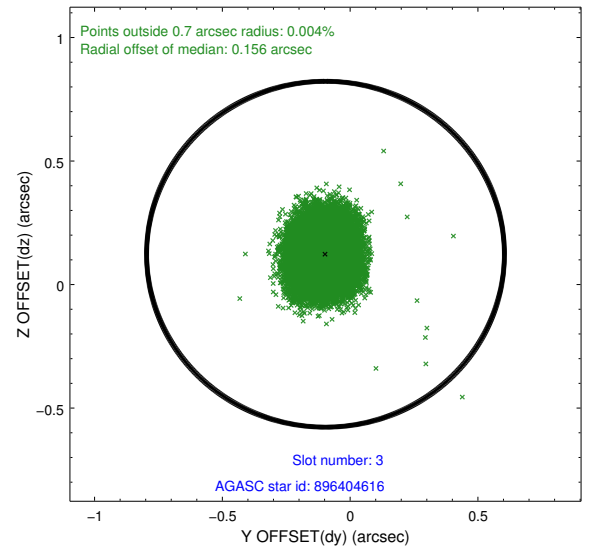
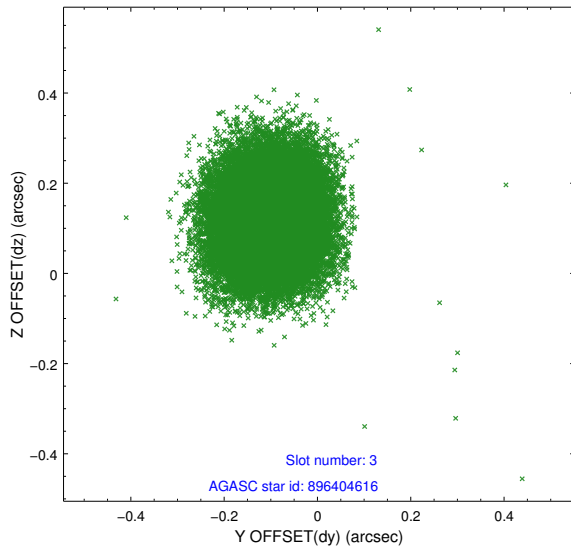


Slot Statistics

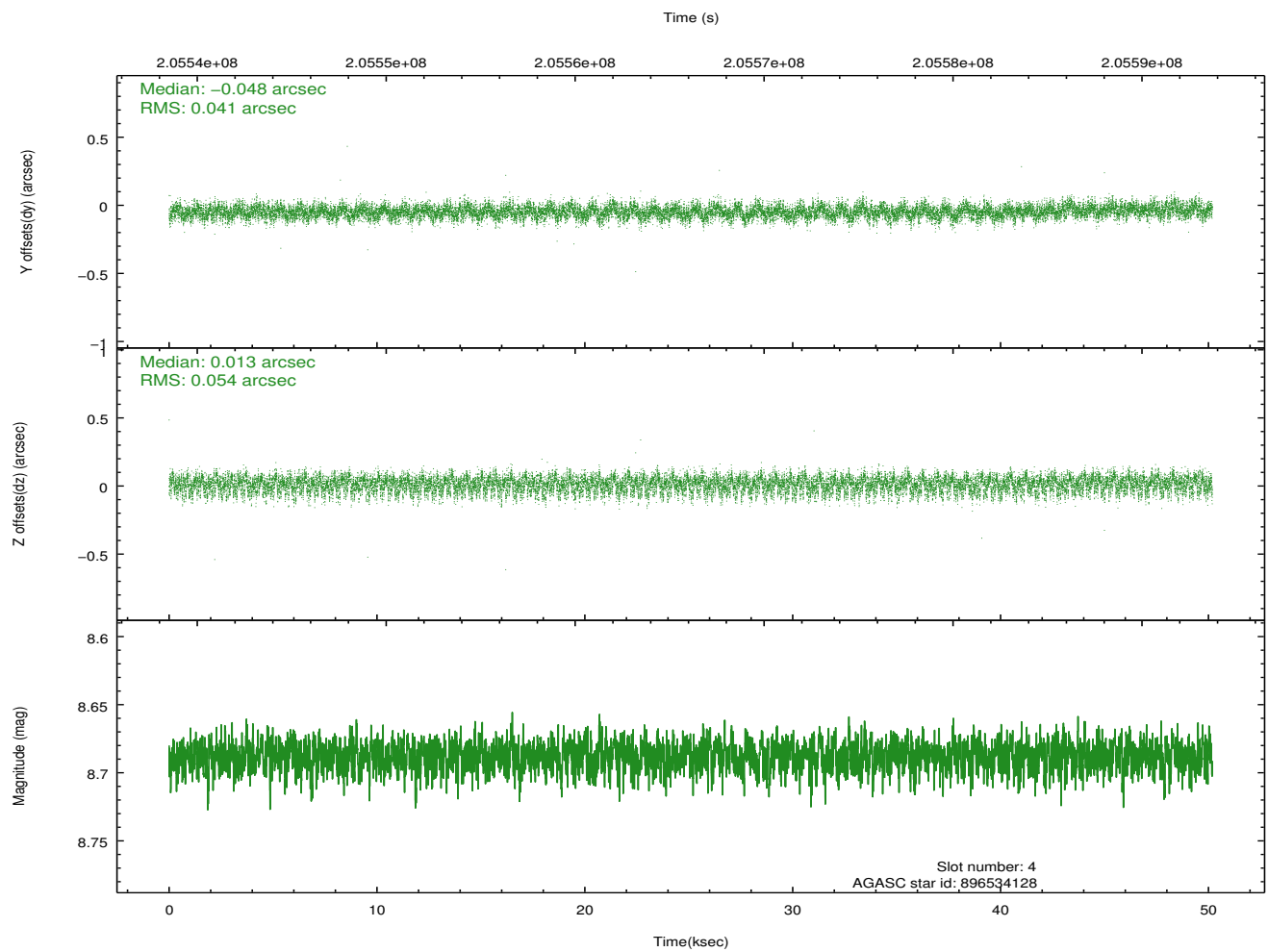
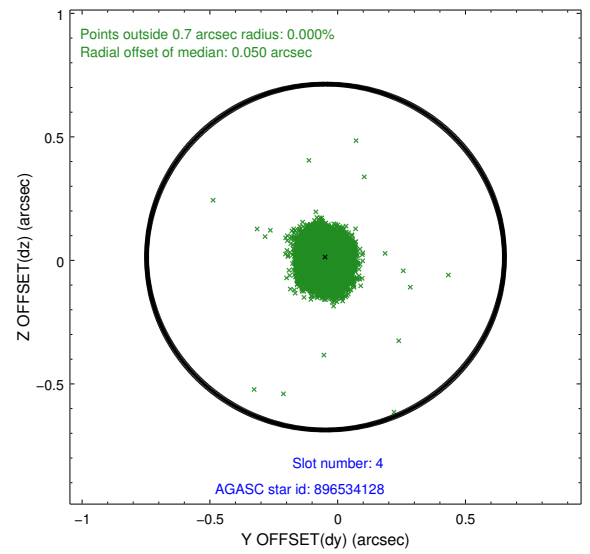
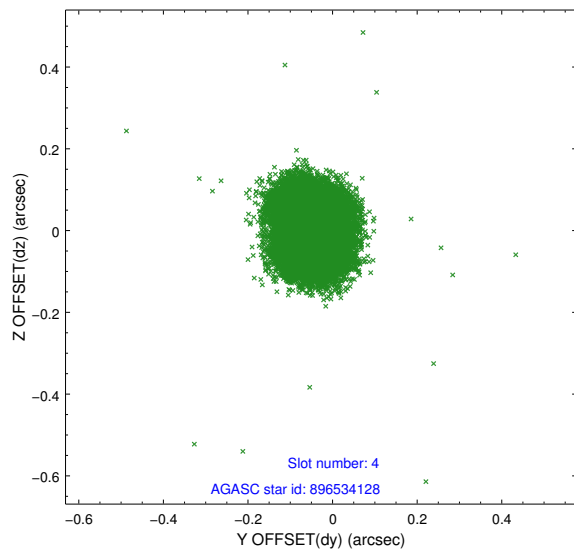
slot	status	id	mag	n_pts	med_dy	med_dz	dr1	dr2	ra	dec	mean_y	mean_z
0	FID	ACIS-I-1	7.24	12242	0.009	0.041	0.018	0.036	0.000000	0.000000	934.60	-832.04
1	FID	ACIS-I-5	7.22	12242	-0.146	0.040	0.017	0.029	0.000000	0.000000	-1813.68	1065.45
2	FID	ACIS-I-6	7.25	12241	0.048	-0.009	0.011	0.020	0.000000	0.000000	400.20	1709.89
3	GUIDE	896404616	9.50	24469	-0.096	0.123	0.108	0.170	265.524948	-28.708456	-1696.13	-2382.15
4	GUIDE	896534128	8.69	24473	-0.048	0.013	0.072	0.116	266.503837	-29.080853	395.46	252.42
5	GUIDE	896534664	8.18	24480	0.124	-0.059	0.059	0.095	266.405570	-28.407461	-2025.19	587.51
6	GUIDE	896541576	8.20	24482	-0.065	-0.045	0.067	0.104	267.051055	-28.762912	-252.70	2217.98
7	GUIDE	896403520	9.00	24471	0.087	-0.031	0.092	0.143	265.626481	-28.748780	-1473.95	-2109.17

2.4 Star Slots

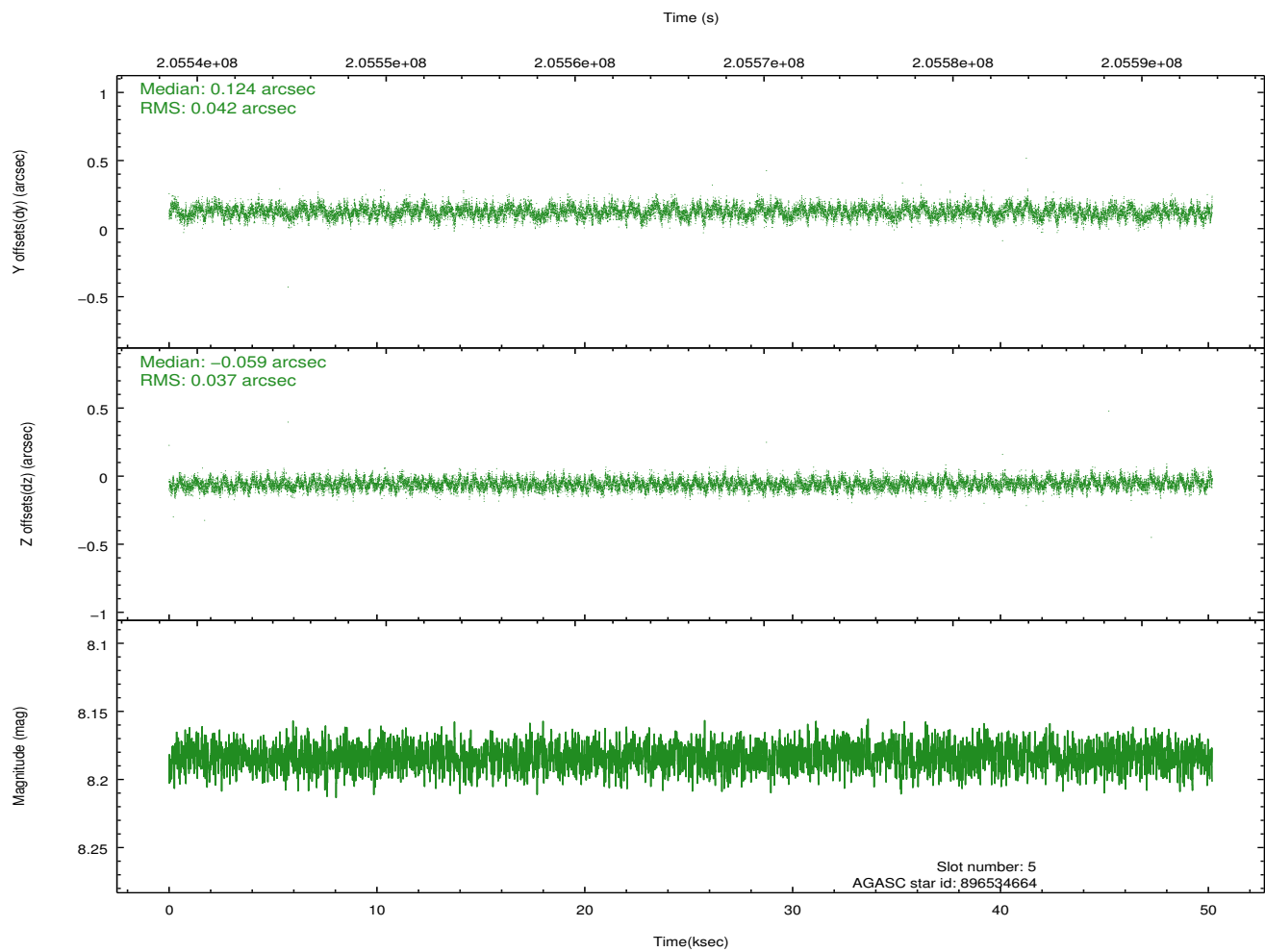
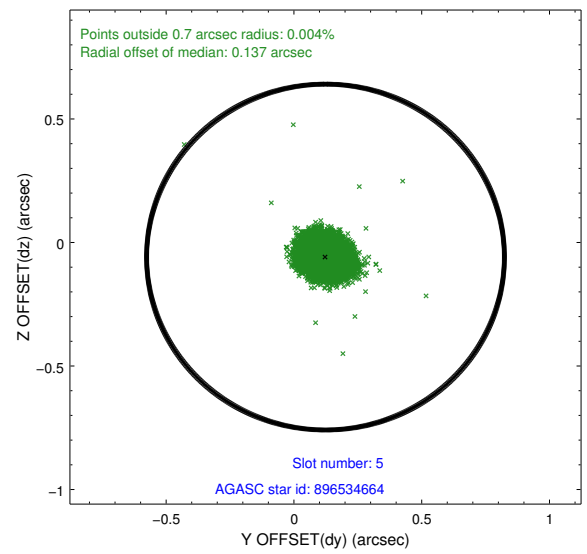
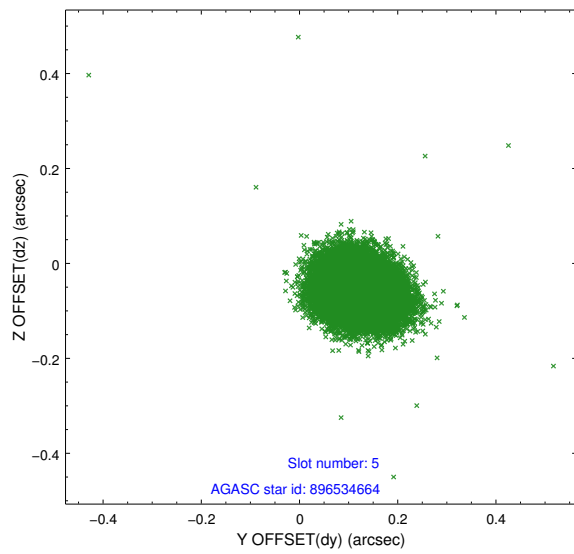
2.4.1 Slot 3



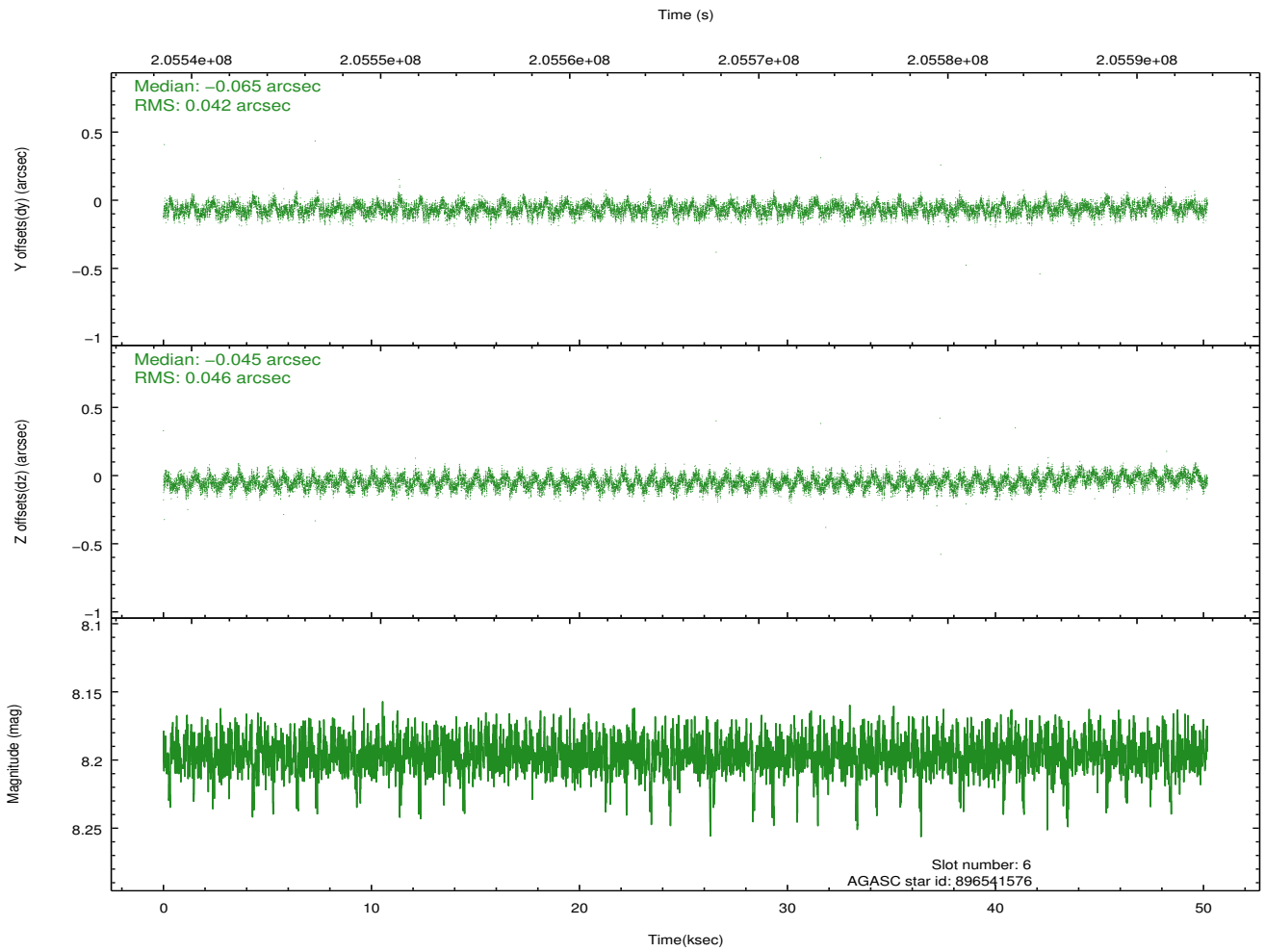
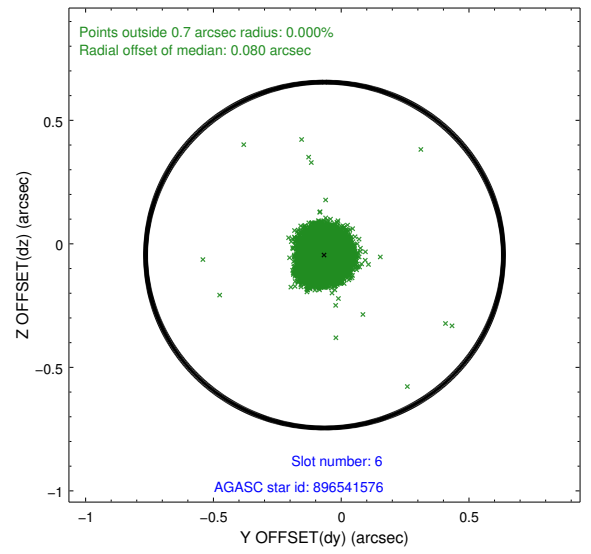
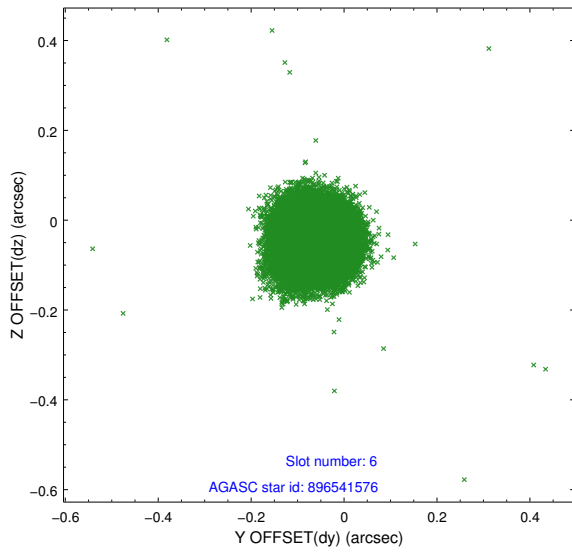
2.4.2 Slot 4



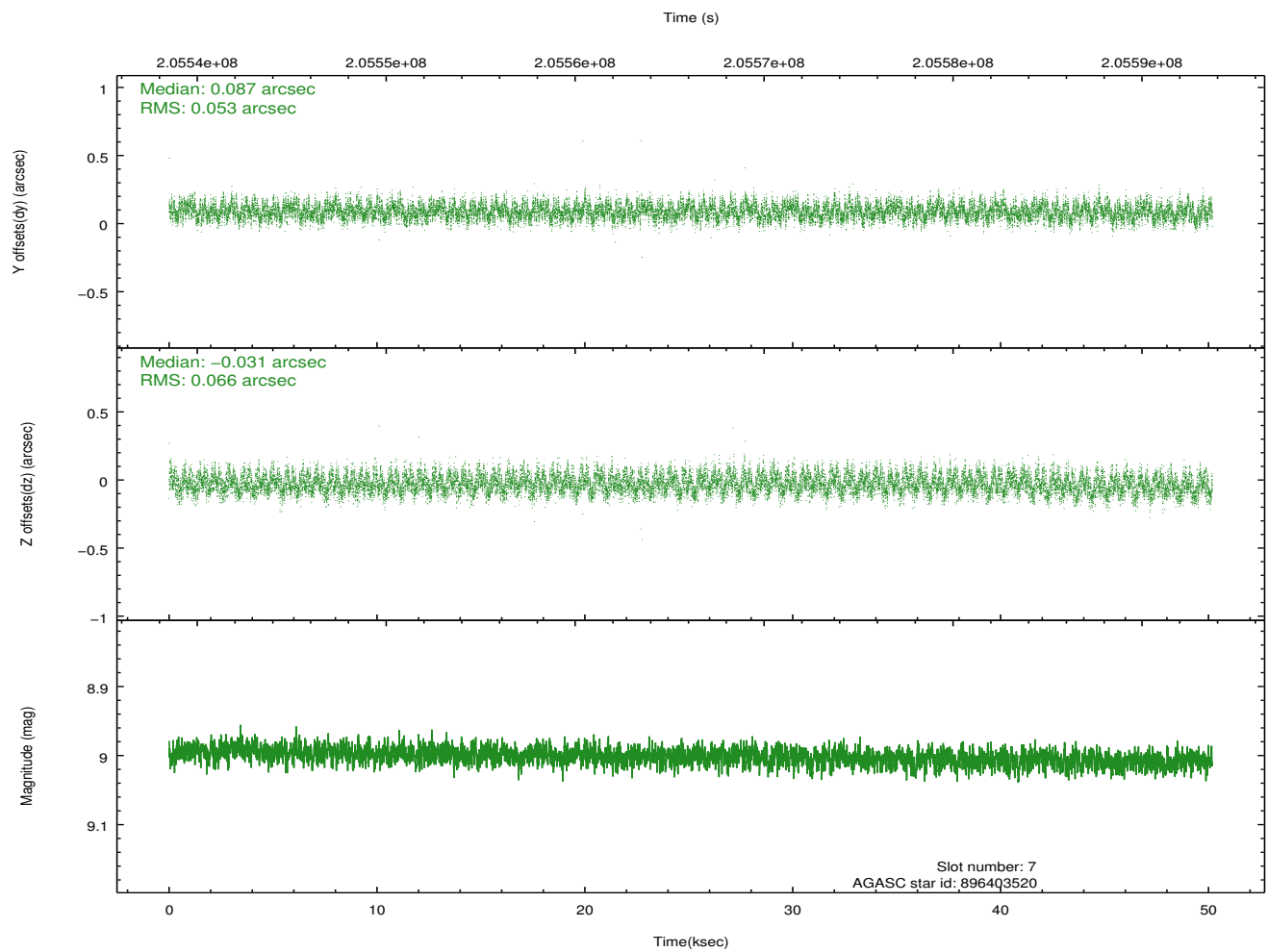
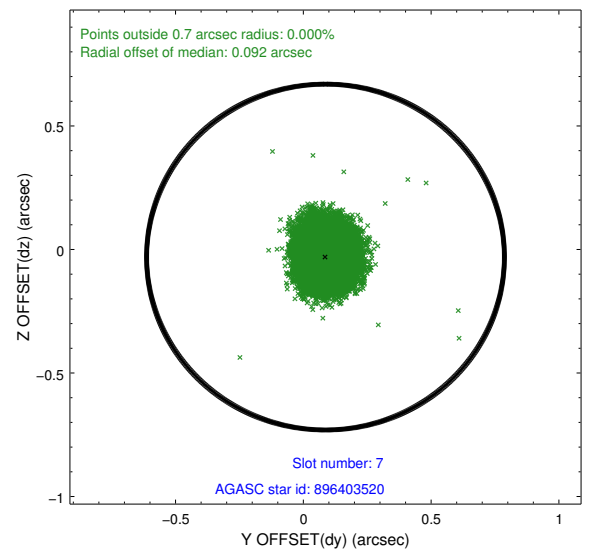
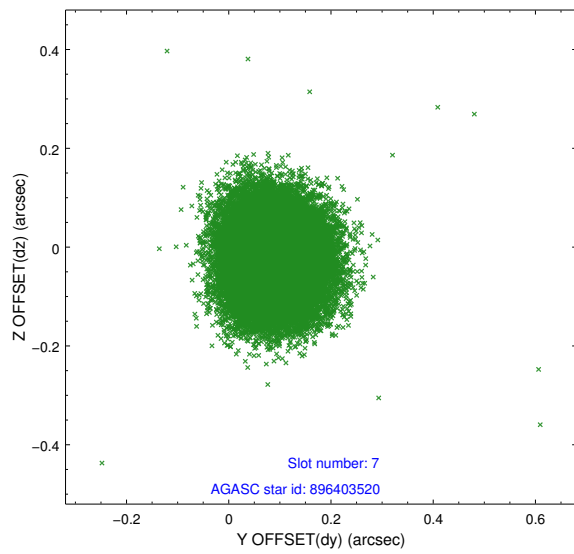
2.4.3 Slot 5



2.4.4 Slot 6

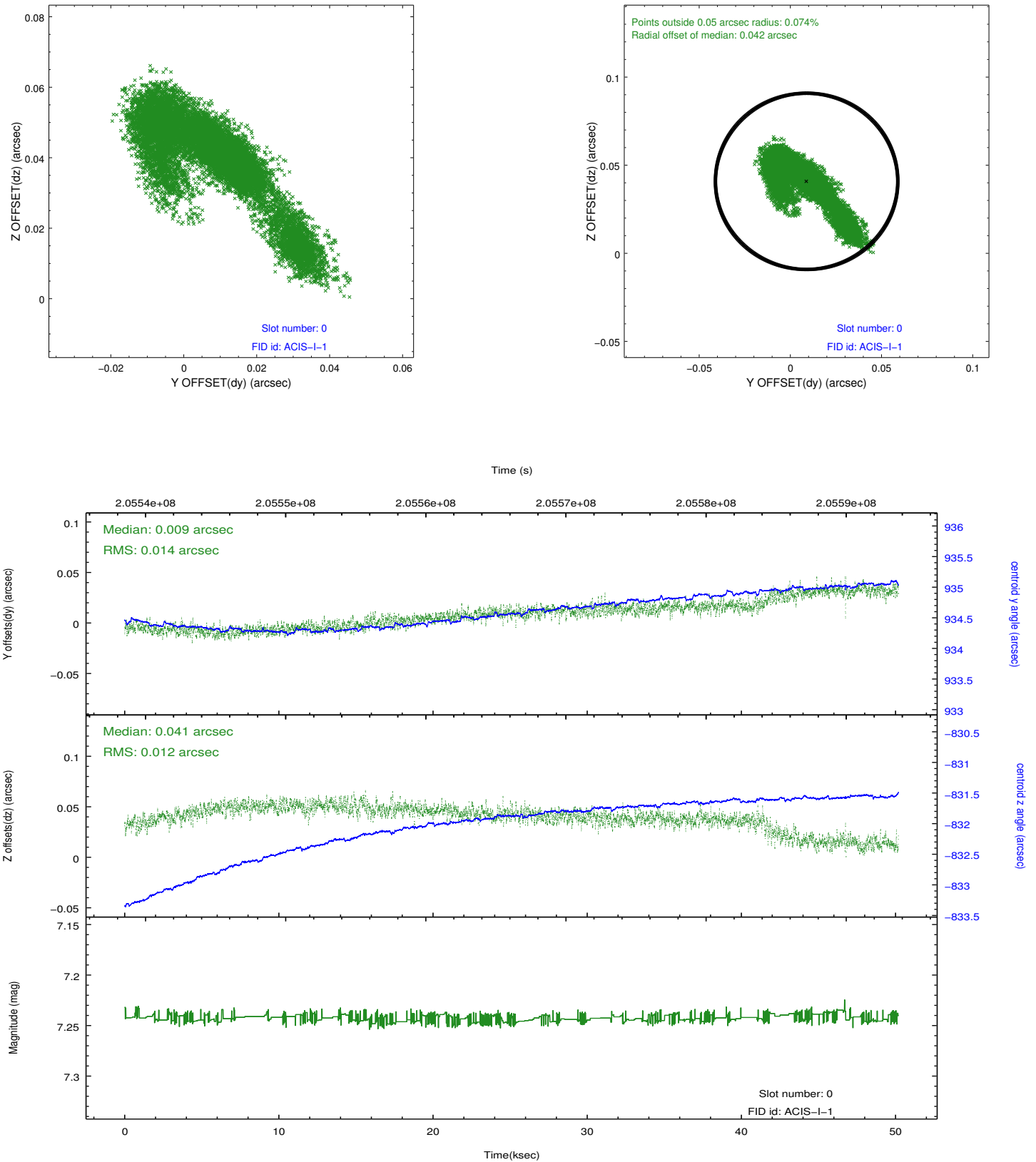


2.4.5 Slot 7

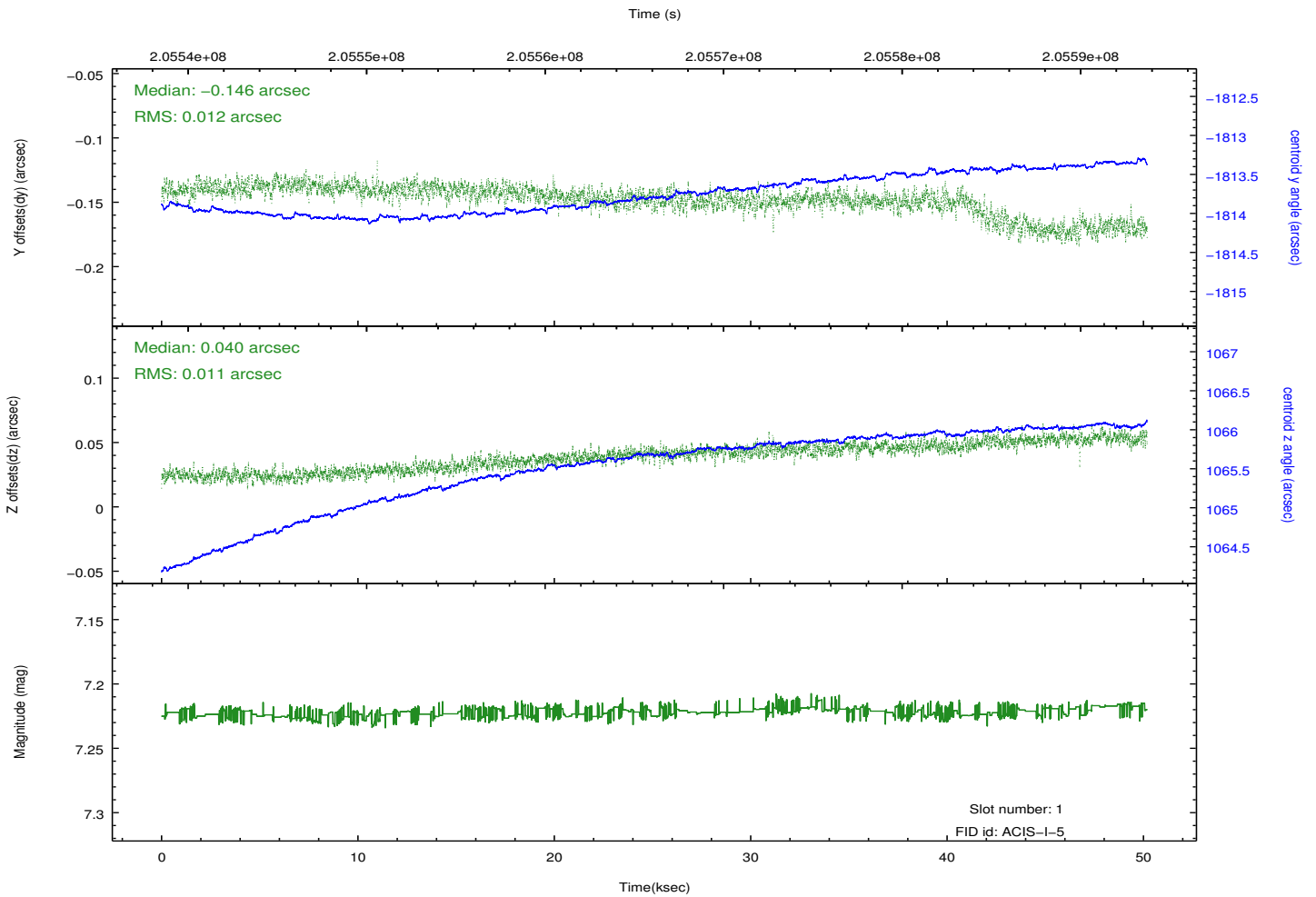
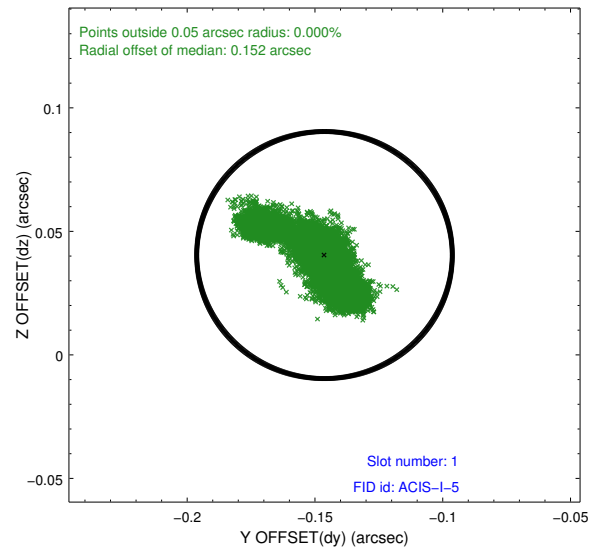
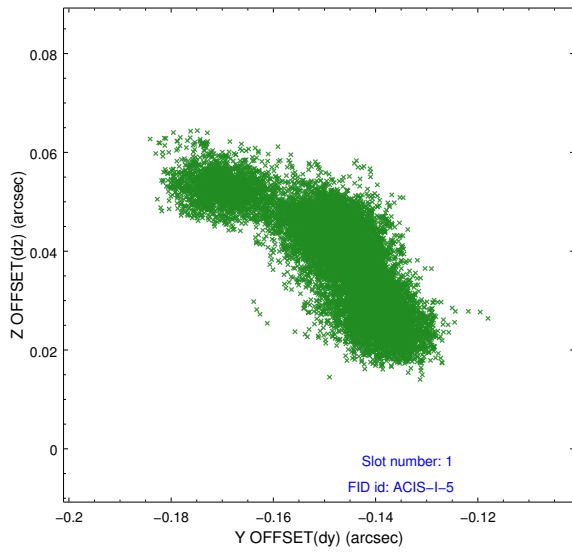


2.5 FID Slots

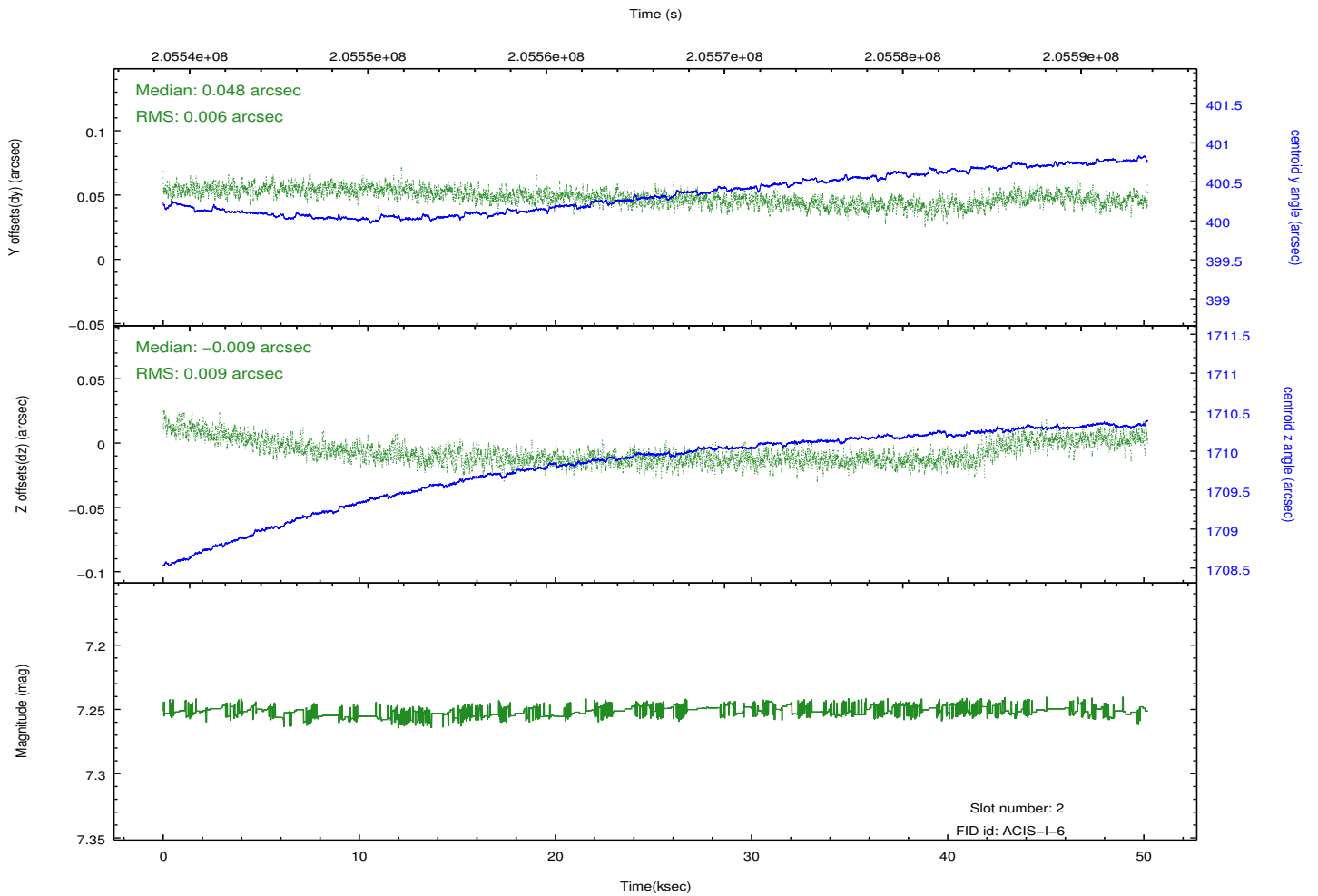
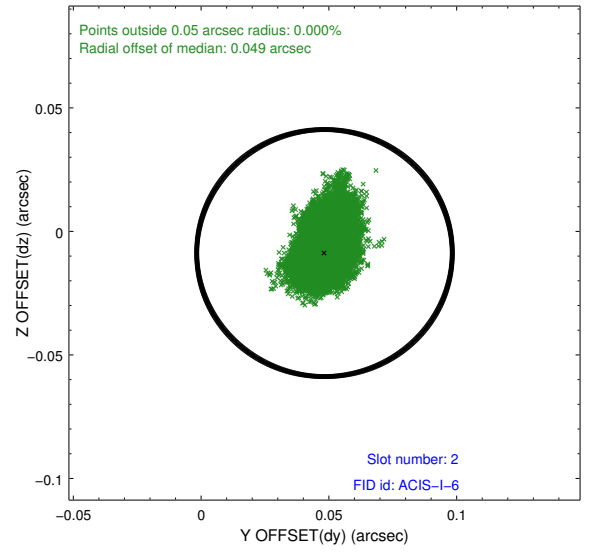
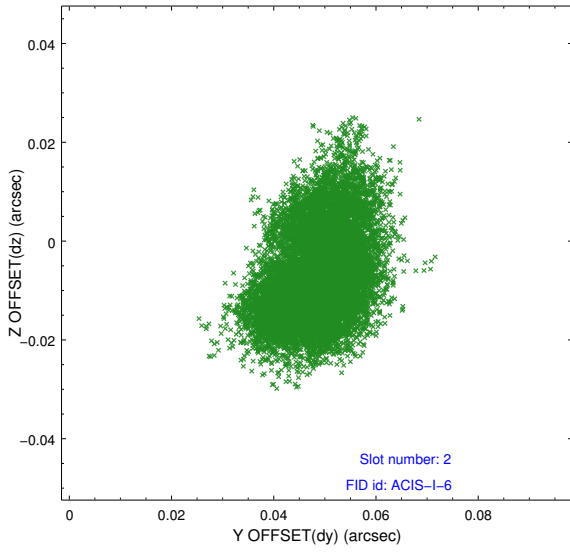
2.5.1 Slot 0



2.5.2 Slot 1



2.5.3 Slot 2



A Summary

A.1 Status

V&V Scientist	Jen Lauer
V&V Date (YYYY-MM-DD)	2012.12.20
V&V Edition	1
V&V Disposition and Status	OK
V&V Charge Time	50.182

A.2 Comments

Window constraint met.