

# V&V Reference Report

## L2 ASCDS Version : 8.4.5

Observation 4814 - L2 Version 3  
Chandra X-Ray Center

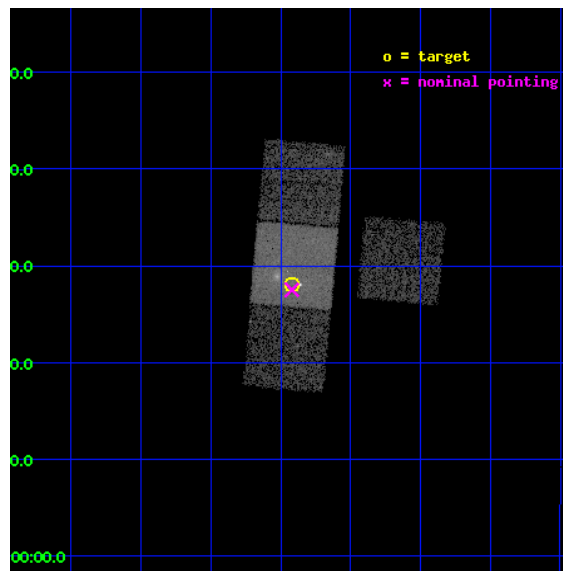
L2 Processing Date : Nov 30 2012

## Contents

<b>1</b>	<b>Front</b>	<b>2</b>
<b>2</b>	<b>OBI</b>	<b>3</b>
2.1	OBI . . . . .	3
2.1.1	Images . . . . .	3
2.1.2	Bias . . . . .	3
2.1.3	Parameters . . . . .	4
2.1.4	Events . . . . .	4
2.2	Compared Parameters . . . . .	5
2.3	Aspect . . . . .	6
2.4	Star Slots . . . . .	9
2.4.1	Slot 3 . . . . .	9
2.4.2	Slot 4 . . . . .	10
2.4.3	Slot 5 . . . . .	11
2.4.4	Slot 6 . . . . .	12
2.4.5	Slot 7 . . . . .	13
2.5	FID Slots . . . . .	14
2.5.1	Slot 0 . . . . .	14
2.5.2	Slot 1 . . . . .	15
2.5.3	Slot 2 . . . . .	16
<b>A</b>	<b>Summary</b>	<b>17</b>
A.1	Status . . . . .	17
A.2	Comments . . . . .	17

# 1 Front

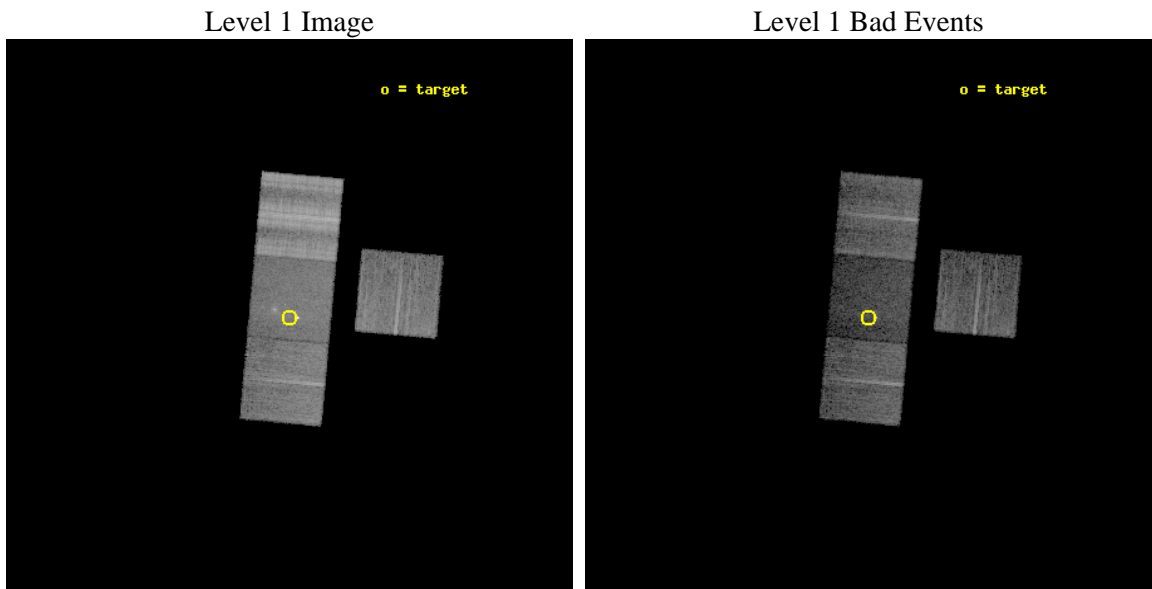
seq_num	700897	Sequence number
obs_id	4814	Observation id
title	Towards a microlensing mapping of an accretion disk	Proposal title
observer	Dr Jean-Francois Claeskens	Principal investigator
object	1RXSJ113155.4-123155	Source name
dtycycle	0	&#160
cycle	P	events from which exps? Prim/Second/Both
ra_targ	172.980833	Observer's specified target RA [deg]
dec_targ	-12.531944	Observer's specified target Dec [deg]
ra_nom	172.98002658908	Nominal RA [deg]
dec_nom	-12.541611985582	Nominal Dec [deg]
roll_nom	275.19080857345	Nominal Roll [deg]
revision	3	Processing version of data
ontime	10180.399980396	Sum of GTIs [s]
livetime	10047.385559951	Livetime [s]
ontime3	10174.118089527	Sum of GTIs [s]
ontime6	10177.259000152	Sum of GTIs [s]
ontime7	10180.399980396	Sum of GTIs [s]
ontime8	10180.399980396	Sum of GTIs [s]
l2events	54178	Number of level 2 events



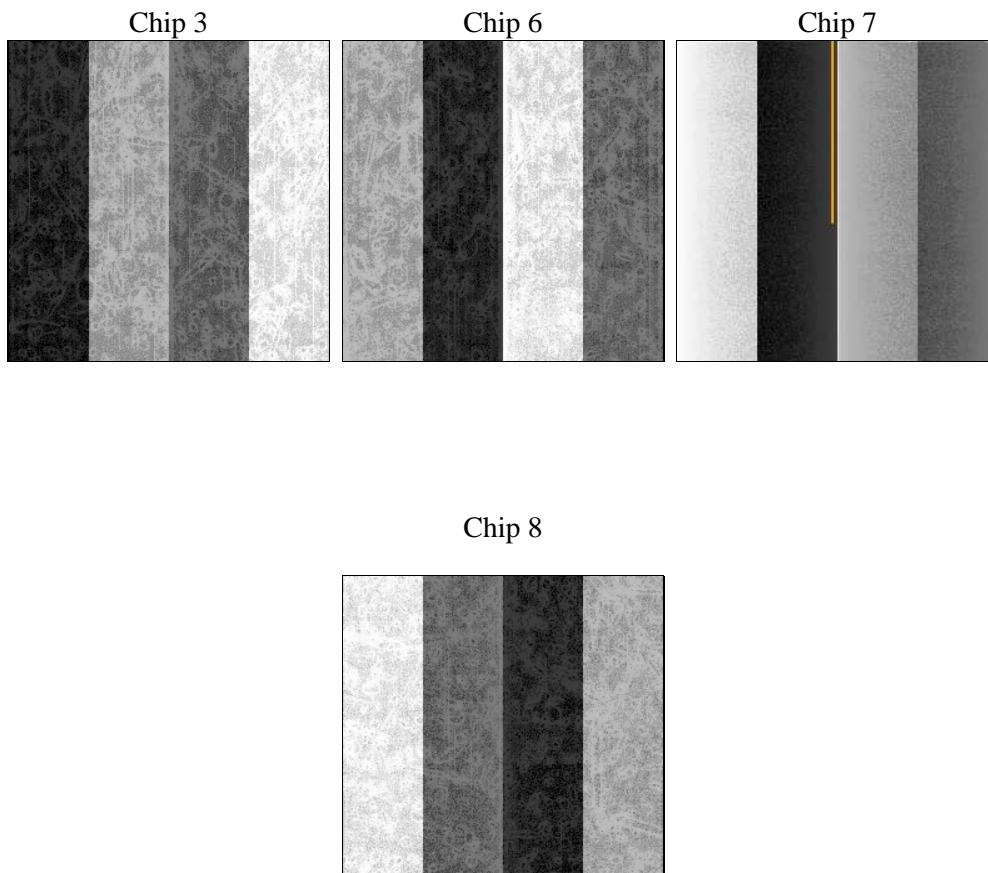
## 2 OBI

### 2.1 OBI

#### 2.1.1 Images



#### 2.1.2 Bias



### 2.1.3 Parameters

obi_num	0	Obi number	sched_exp_time	10000.000000	[s] Scheduled observation exposure time
ascdsver	8.4.5	Processing system revision	ontime	10180.399980396	Sum of GTIs [s]
caldsver	4.5.2	&#160	ontime3	10174.118089527	Sum of GTIs [s]
date	2012-11-30T14:00:56	Date and time of file creation	ontime6	10177.259000152	Sum of GTIs [s]
revision	3	Processing version of data	ontime7	10180.399980396	Sum of GTIs [s]
			ontime8	10180.399980396	Sum of GTIs [s]
			l1events	478192	Number of level 1 events

### 2.1.4 Events

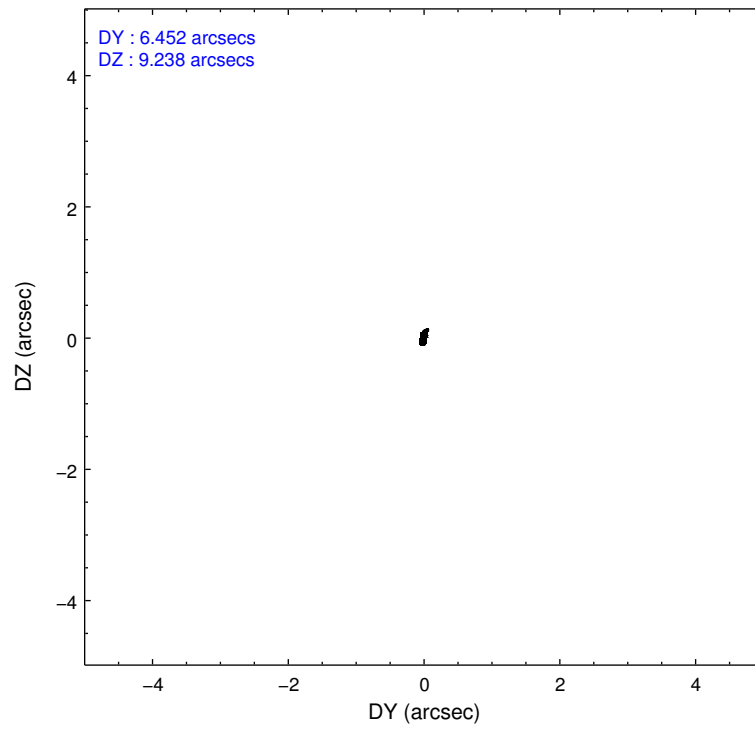
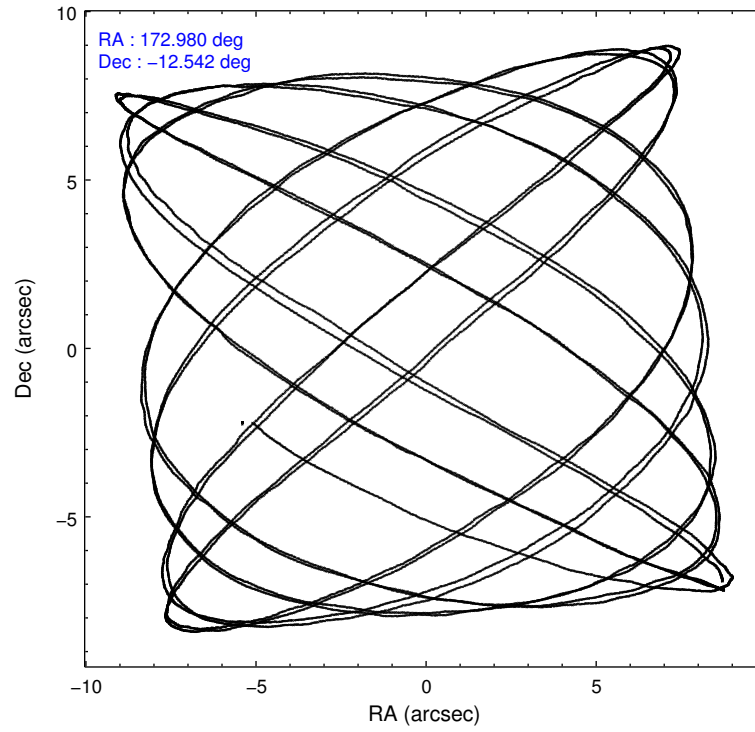
	ccd 3	ccd 6	ccd 7	ccd 8
level 1 events	88613	96081	87534	205964
rejected events	82728	88004	50483	116038
rejected %	93%	91%	57%	56%

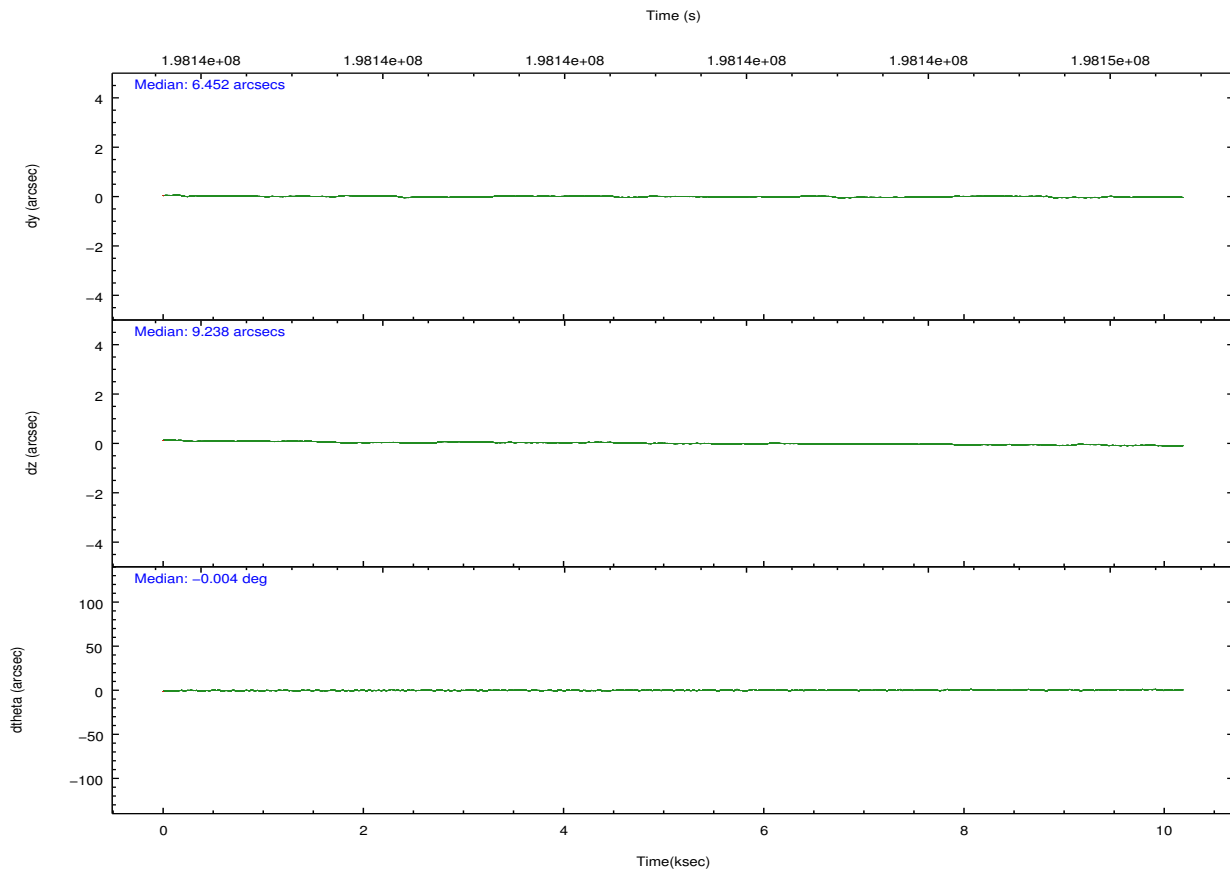
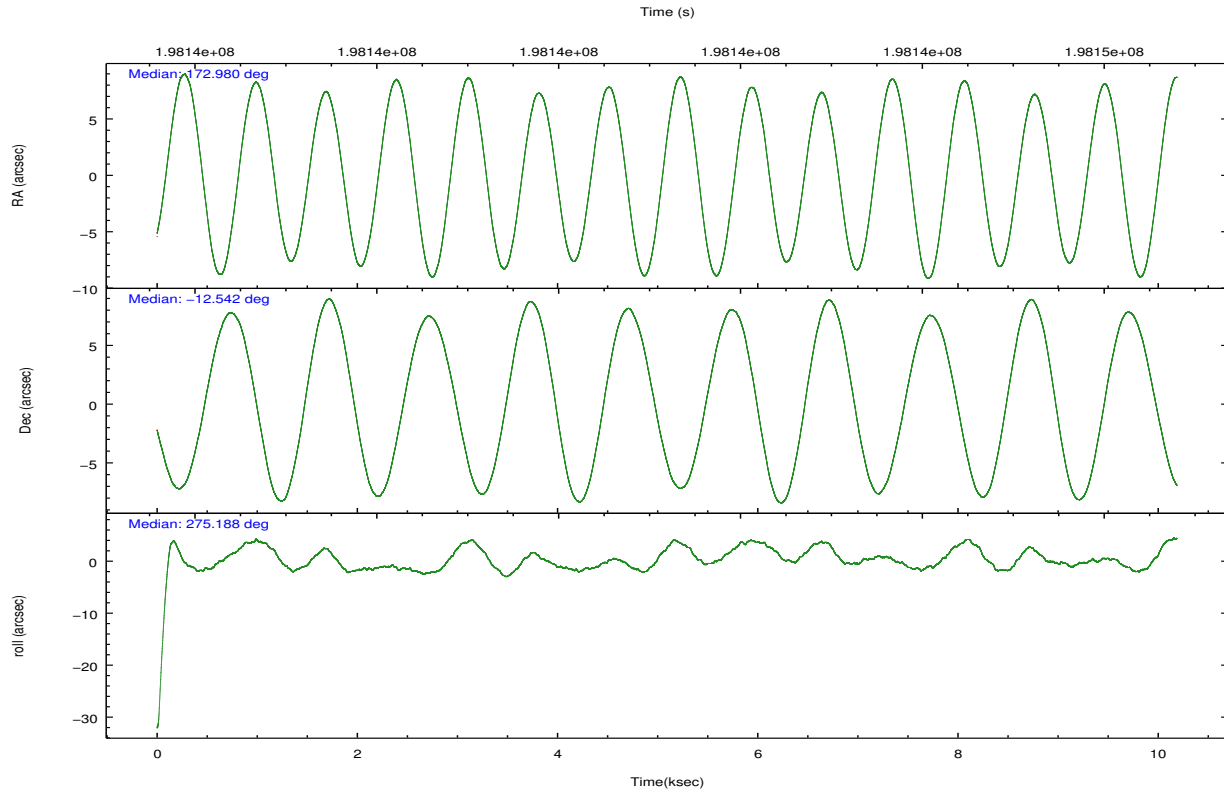
	ccd 3	ccd 6	ccd 7	ccd 8
grade 0 events	2409	3592	5059	29307
	2%	3%	5%	14%
grade 1 events	39	54	147	264
	0%	0%	0%	0%
grade 2 events	1705	2758	9514	16569
	1%	2%	10%	8%
grade 3 events	797	820	4320	18900
	0%	0%	4%	9%
grade 4 events	764	813	4290	16909
	0%	0%	4%	8%
grade 5 events	2660	2706	8822	5191
	3%	2%	10%	2%
grade 6 events	1335	1604	19534	27044
	1%	1%	22%	13%
grade 7 events	78904	83734	35848	91780
	89%	87%	40%	44%

## 2.2 Compared Parameters

Parameter	Planned	Actual	Parameter	Planned	Actual
Instrument	ACIS	ACIS	Obspar format version number	7	7
Detector	ACIS-3678	ACIS-3678	Obspar file type	PREDICTED	ACTUAL
Grating	NONE	NONE	Obspar update status	NONE	UPDATED
Data mode	VFAINT	VFAINT	Number of optional ACIS chips dropped	0	0
Observation mode	POINTING	POINTING	On-chip summing requested	N	N
[deg] Pointing RA	172.963601	172.980026589082	Subarray requested	NONE	NONE
[deg] Pointing Dec	-12.519543	-12.54161198558216	Alternating exposures requested	N	N
[deg] Pointing Roll	275.030657	275.1908085734505	[s] Primary exposure time	0.000000	3.1
[s] Window start time (MET)	198115264.184000	198115264.184000			
[s] Window stop time (MET)	198806464.184000	198806464.184000			
[mm] SIM focus pos	-0.684267	-0.6828225247311905			
[mm] SIM defocus	0	0.001444936568705701			
[mm] SIM translation stage pos	-190.132523	-190.1400660498719			
[mm] SIM translation stage offset	0	0.00754346686406393			
[s] Observation start time (MET)	198136283.184000	198134350.48451			
Observation start date	2004-04-12T05:50:19	2004-04-12T05:19:10			
[s] Observation end time (MET)	198146283.184000	198146416.78504			
Observation end date	2004-04-12T08:36:59	2004-04-12T08:40:16			
Read mode	TIMED	TIMED			

## 2.3 Aspect





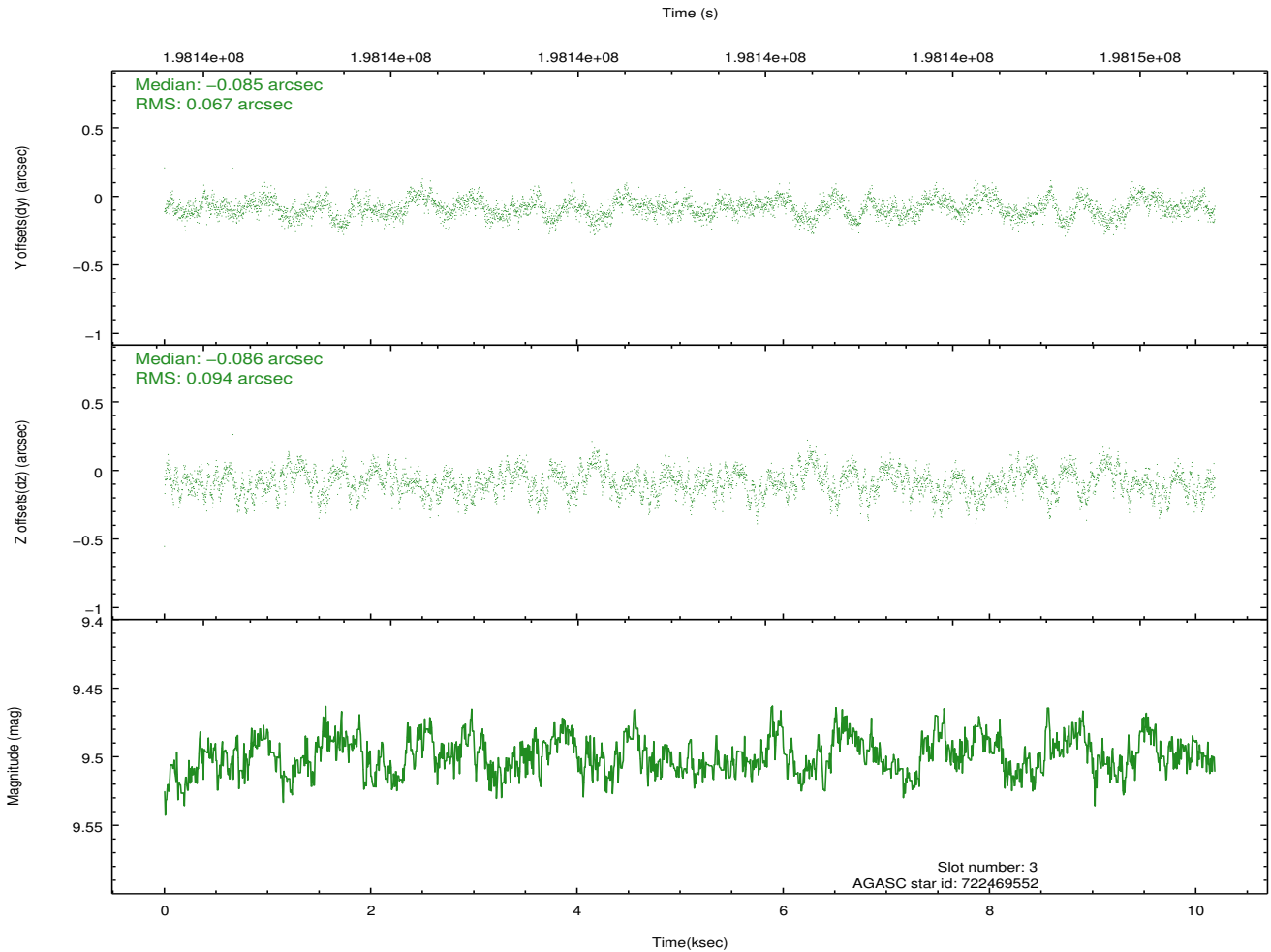
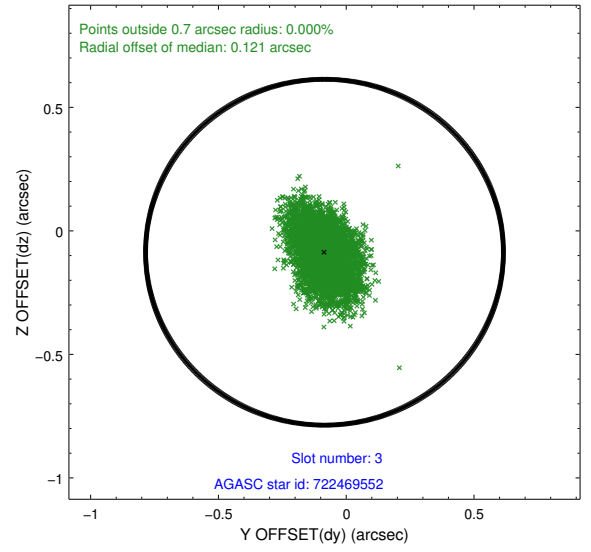
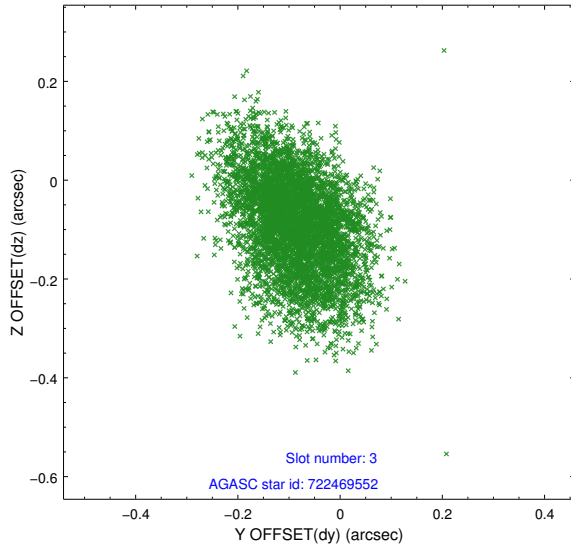
### Slot Statistics

slot	status	id	mag	n_pts	med_dy	med_dz	dr1	dr2	ra	dec	mean_y	mean_z
0	FID	ACIS-S-2	7.10	2485	-0.053	-0.042	0.006	0.010	0.000000	0.000000	-759.23	-1730.52
1	FID	ACIS-S-4	7.21	2485	0.093	0.037	0.005	0.010	0.000000	0.000000	2153.95	177.53
2	FID	ACIS-S-5	7.23	2485	-0.071	0.014	0.006	0.010	0.000000	0.000000	-1811.43	171.74
3	GUIDE	722469552	9.50	4968	-0.085	-0.086	0.122	0.205	172.271393	-12.124699	-1626.18	-2302.78
4	GUIDE	722473176	9.46	4964	-0.067	0.013	0.089	0.142	172.599746	-12.066793	-1735.06	-1133.76
5	GUIDE	722871728	9.67	4906	0.009	0.021	0.122	0.191	173.202235	-12.568355	248.79	819.69
6	GUIDE	722872912	9.93	4967	0.068	0.012	0.116	0.192	173.118043	-12.649915	515.68	499.48
7	GUIDE	722873464	7.32	4969	0.075	0.047	0.071	0.110	172.661543	-13.050266	1811.78	-1222.50

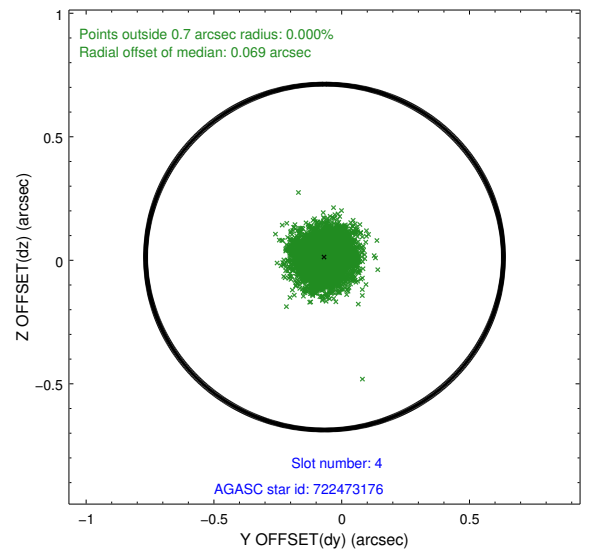
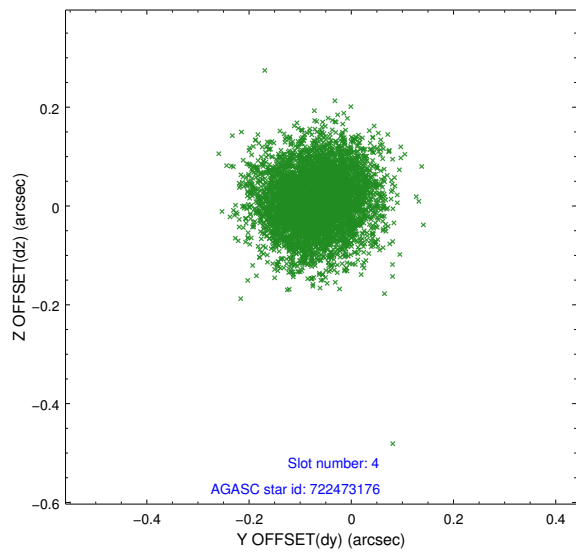
∞

## 2.4 Star Slots

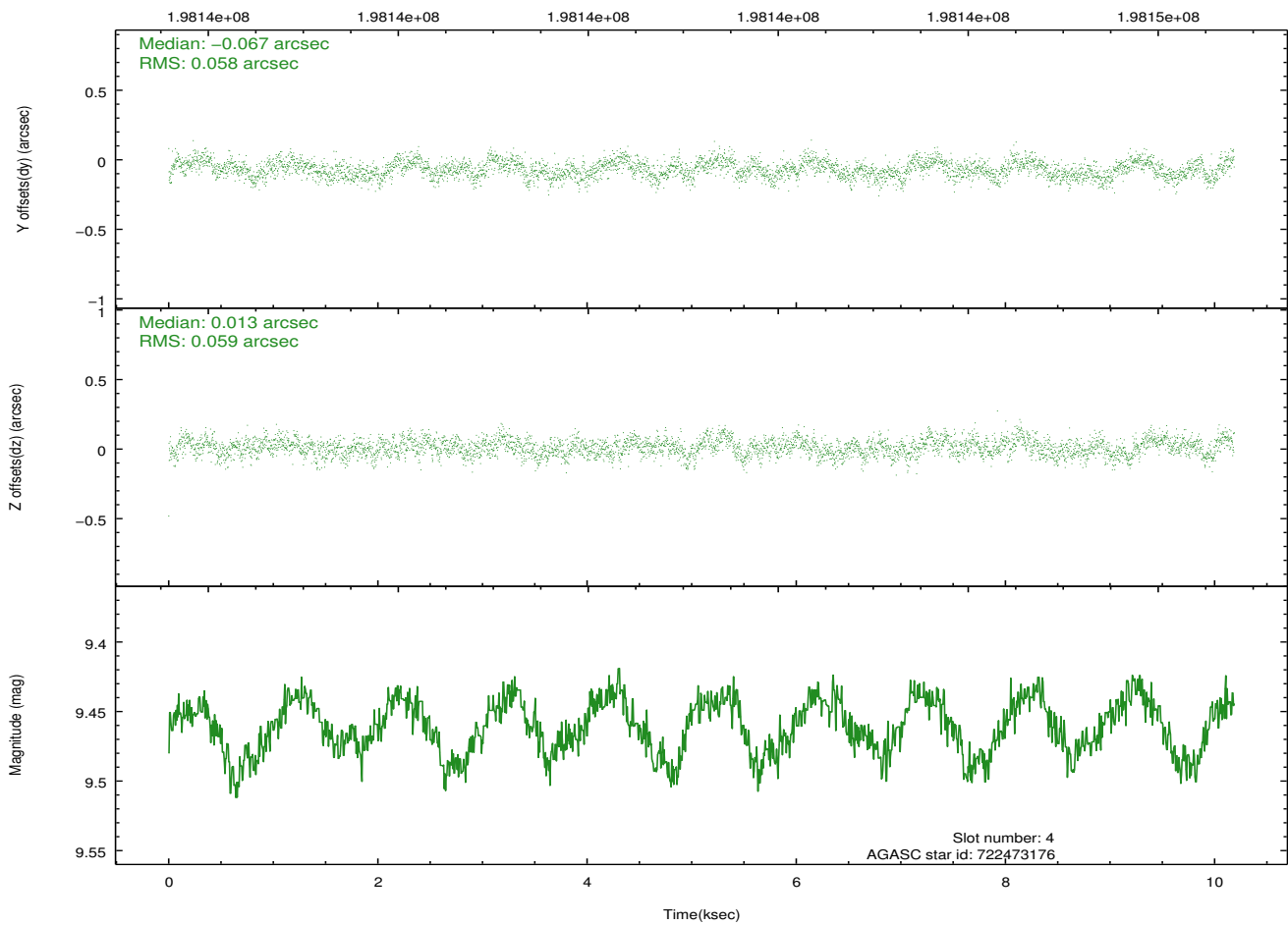
### 2.4.1 Slot 3



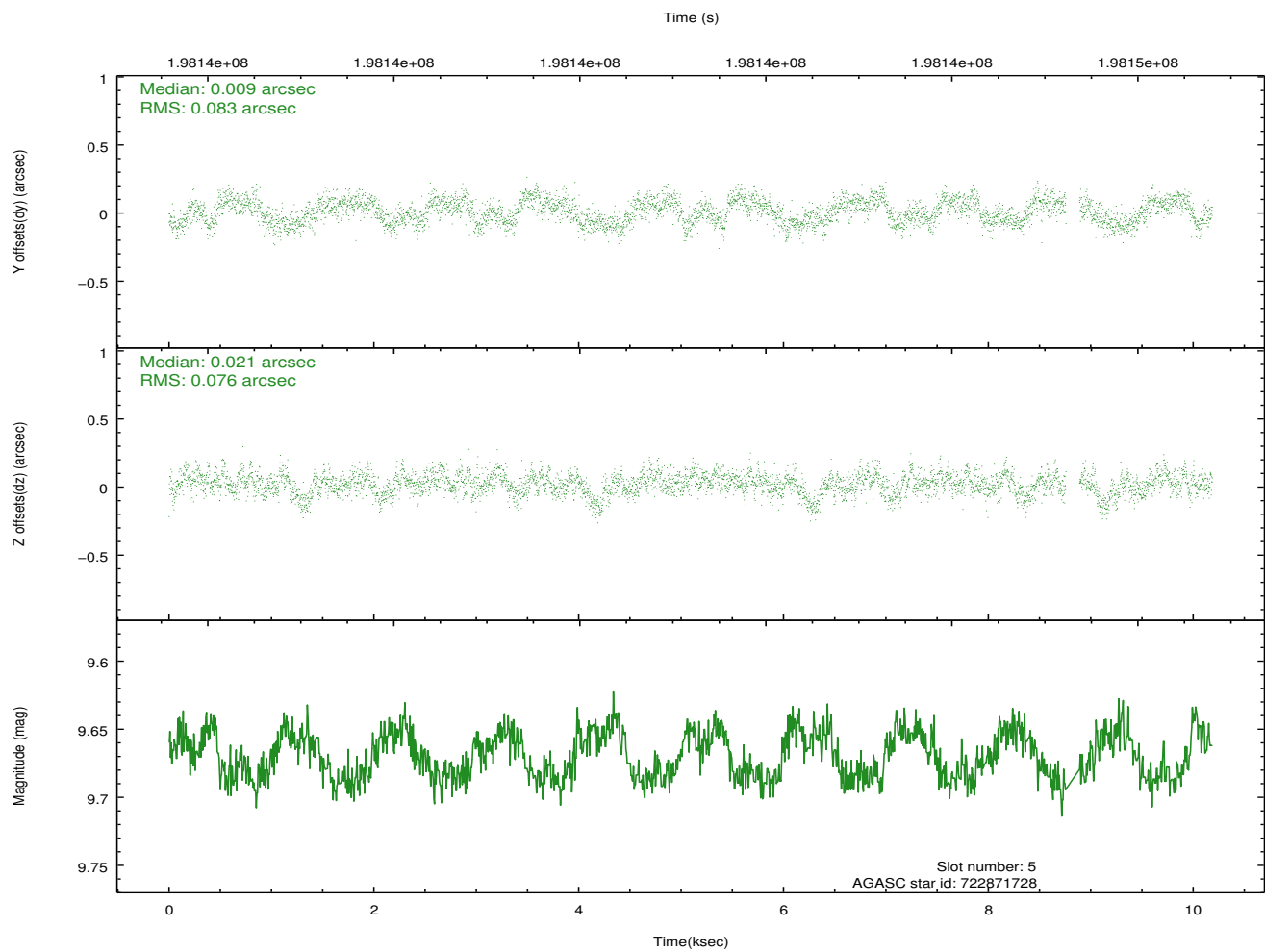
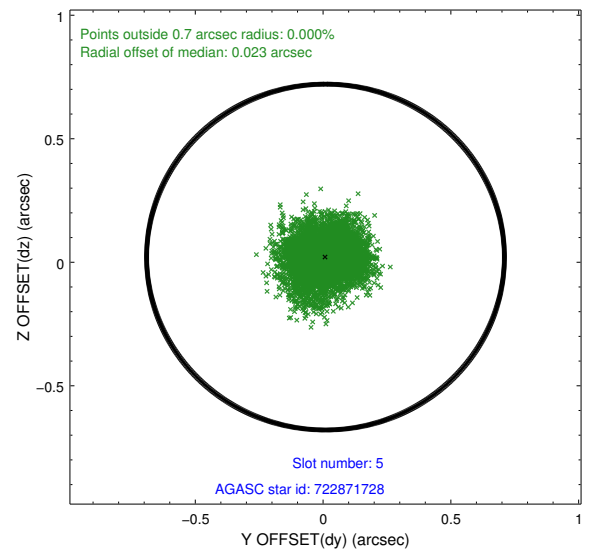
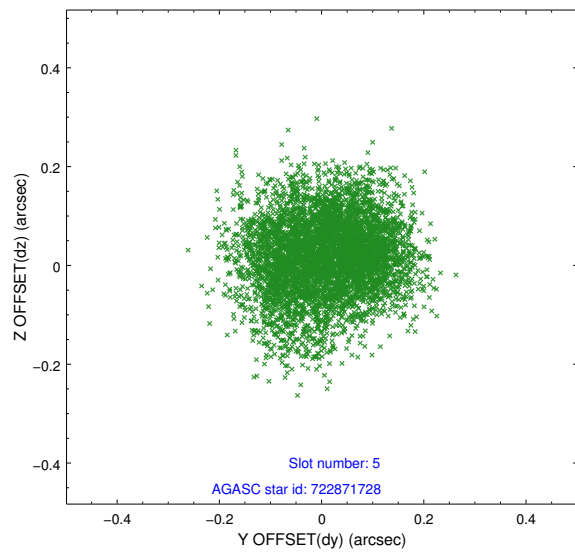
## 2.4.2 Slot 4



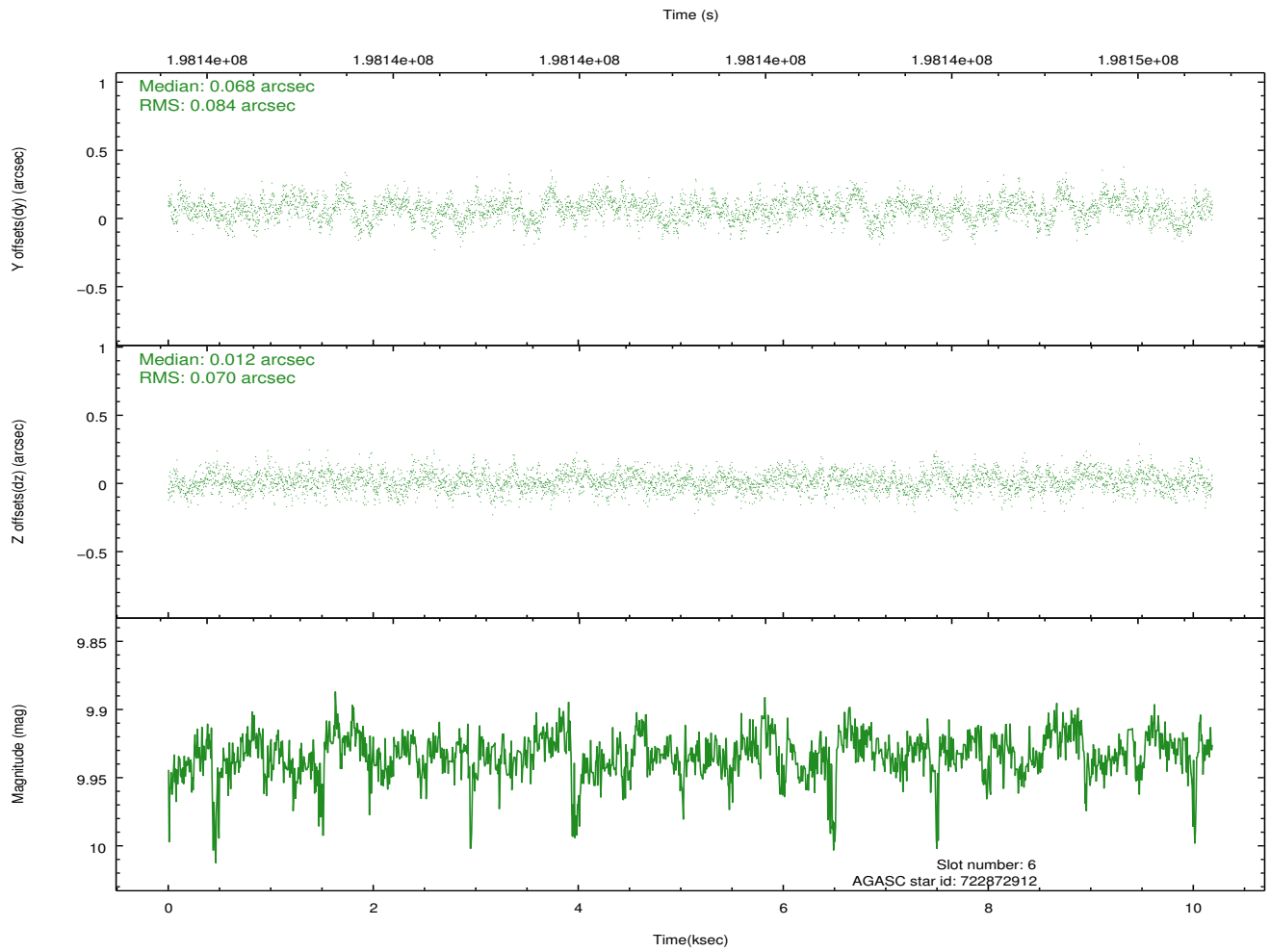
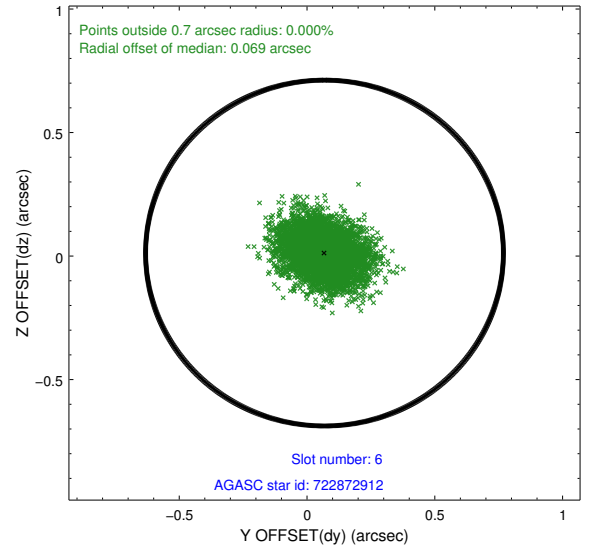
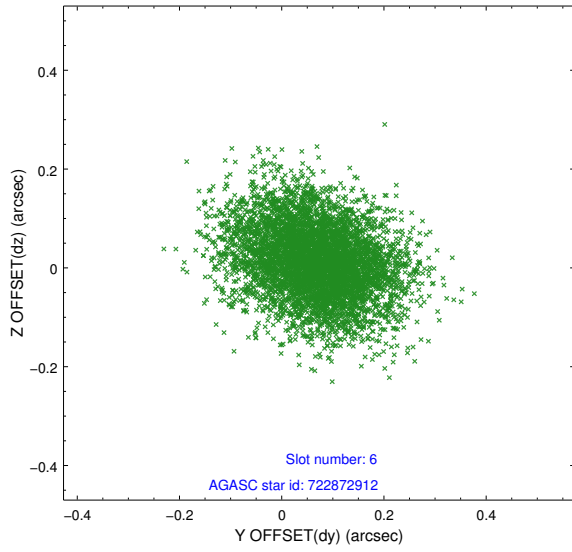
Time (s)



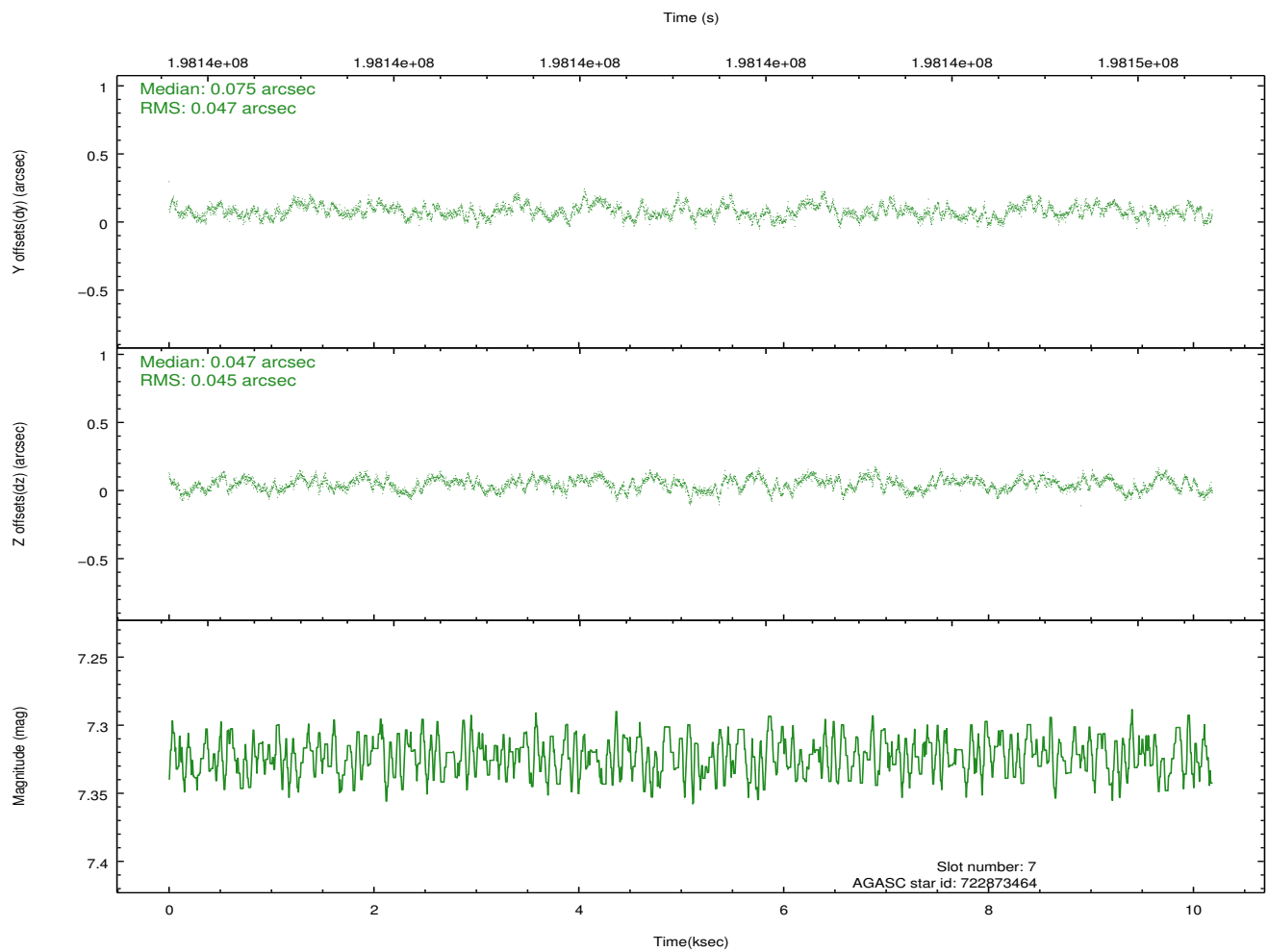
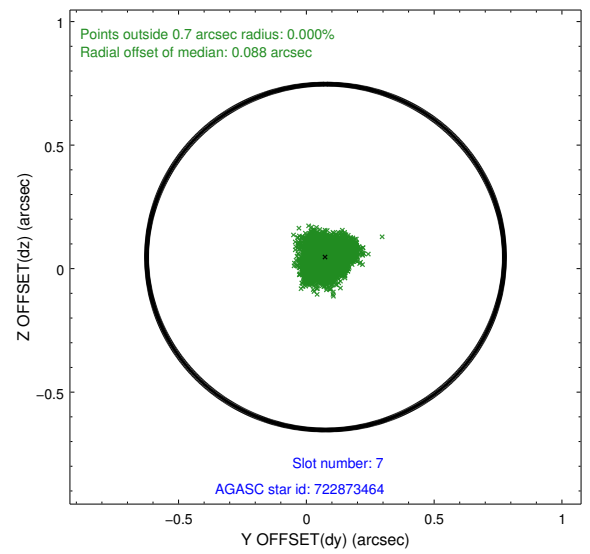
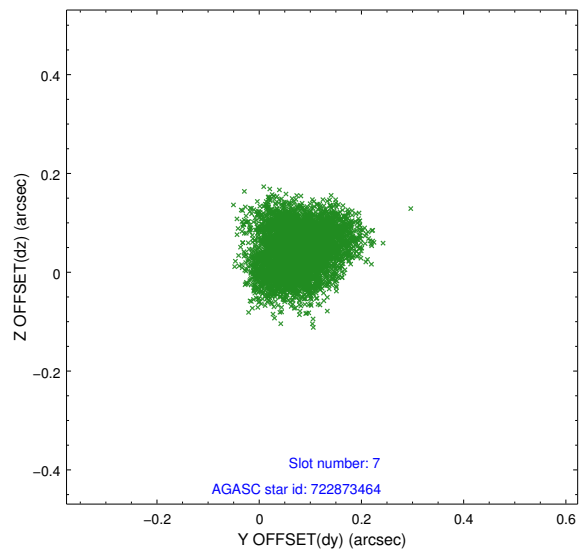
### 2.4.3 Slot 5



## 2.4.4 Slot 6

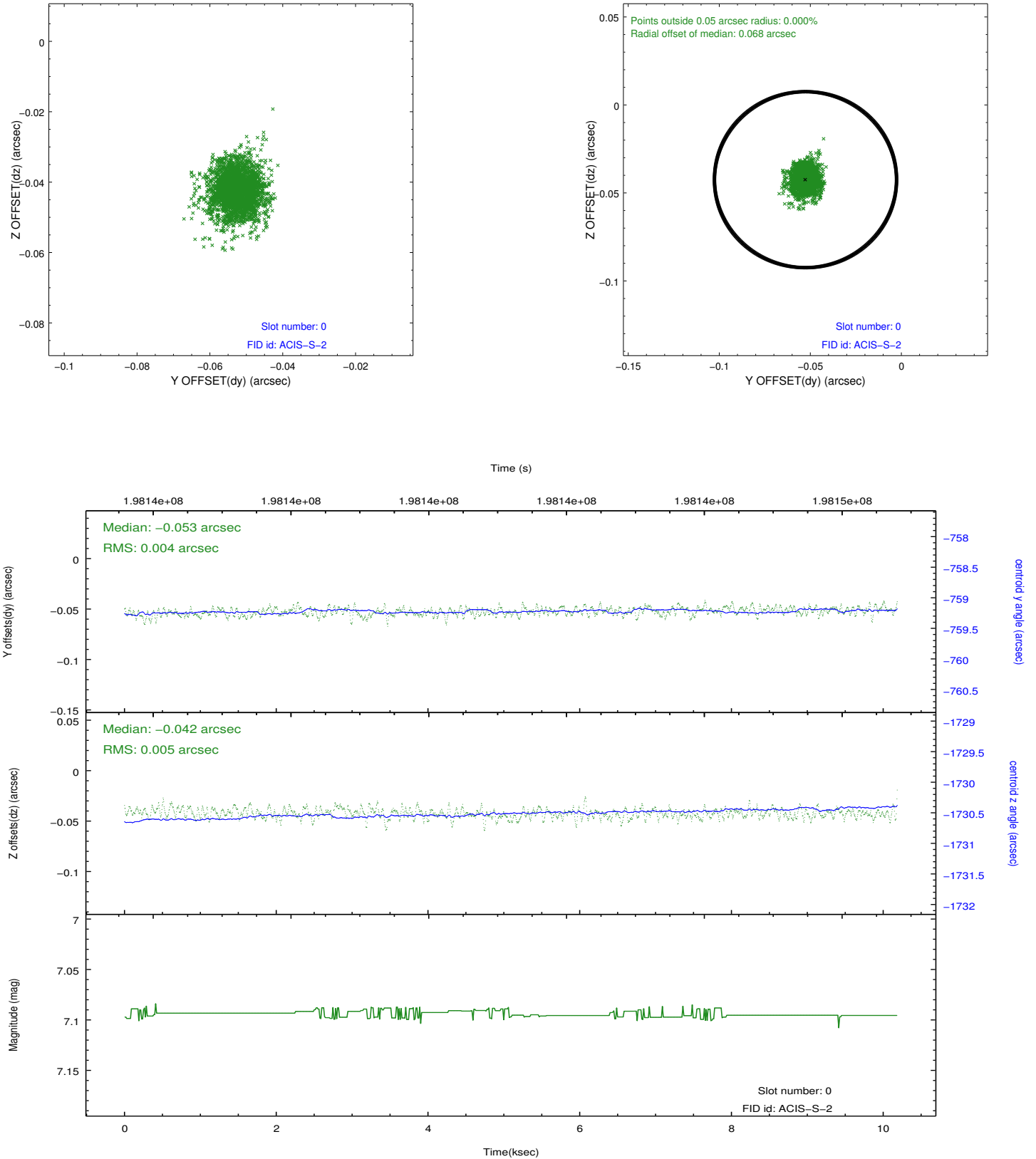


## 2.4.5 Slot 7

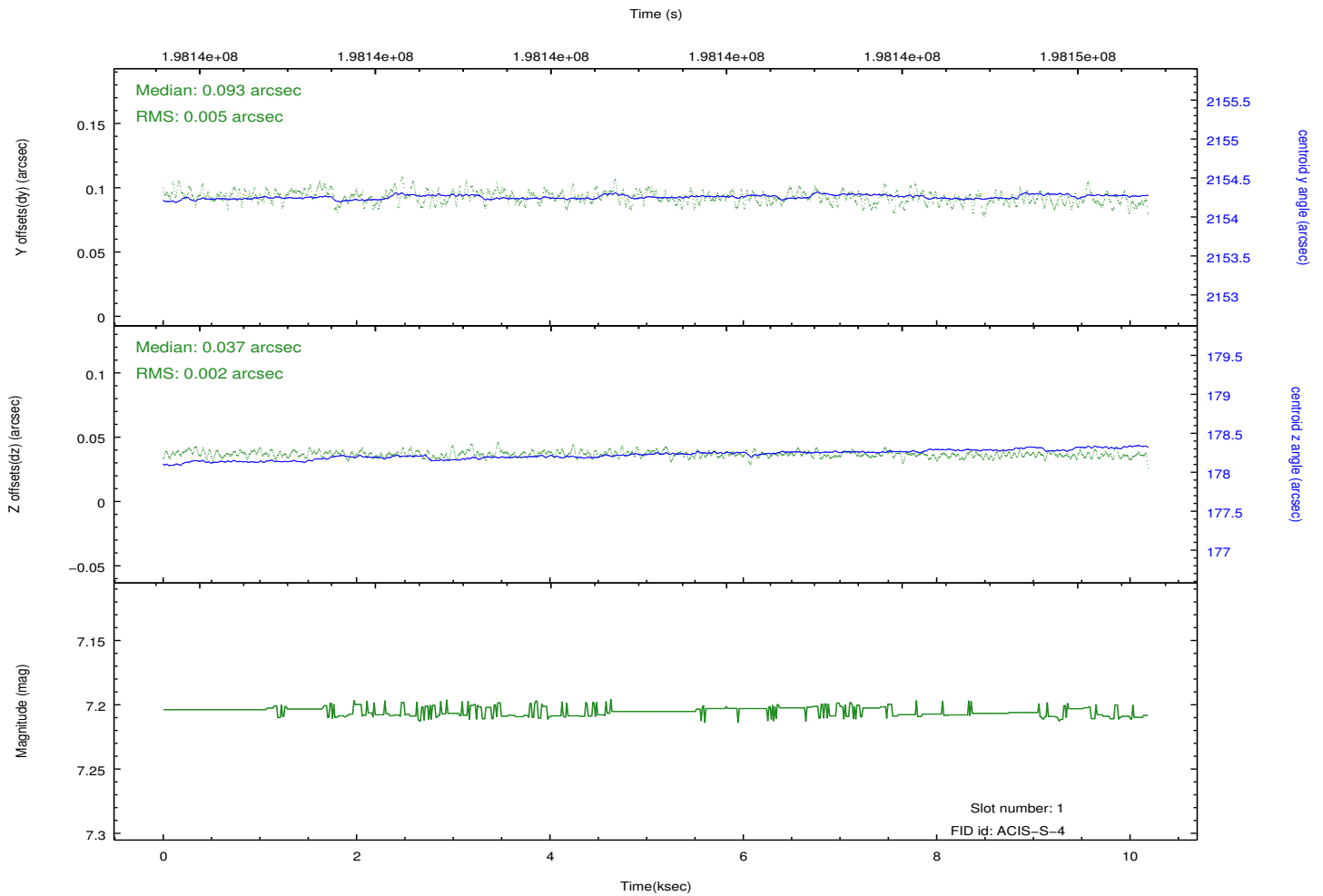
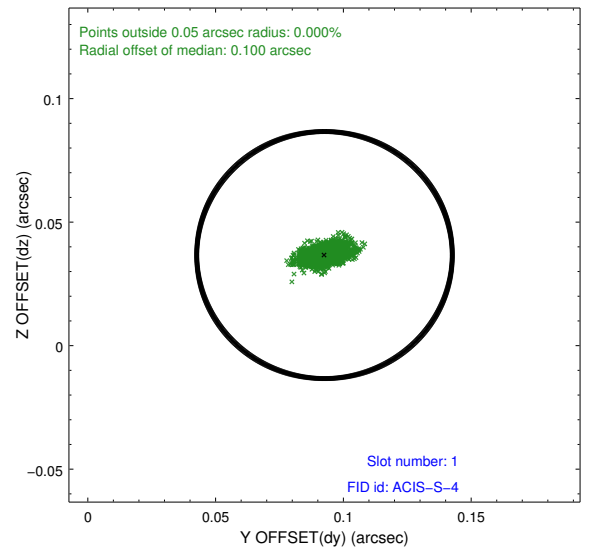
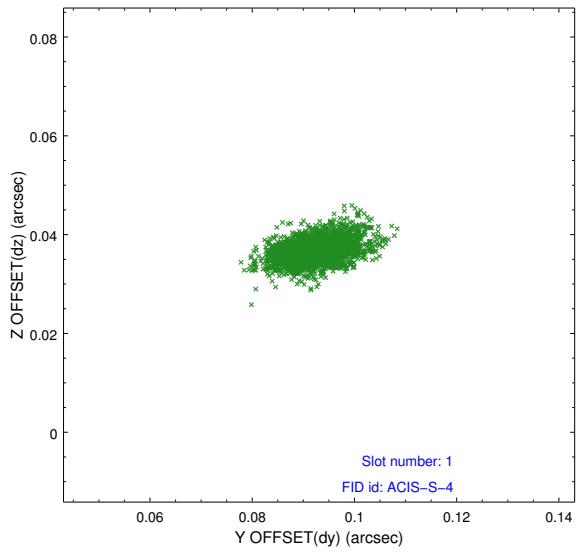


## 2.5 FID Slots

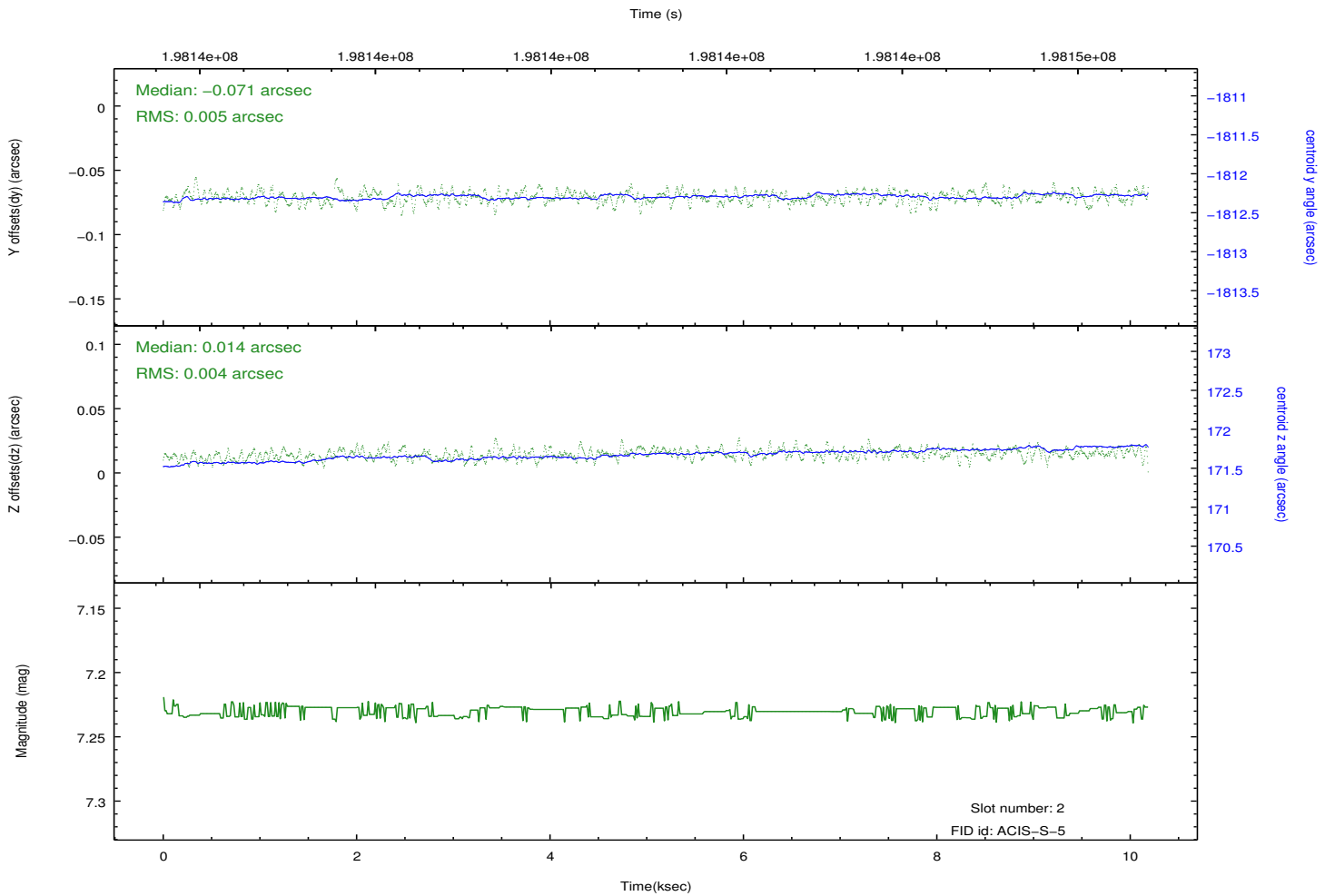
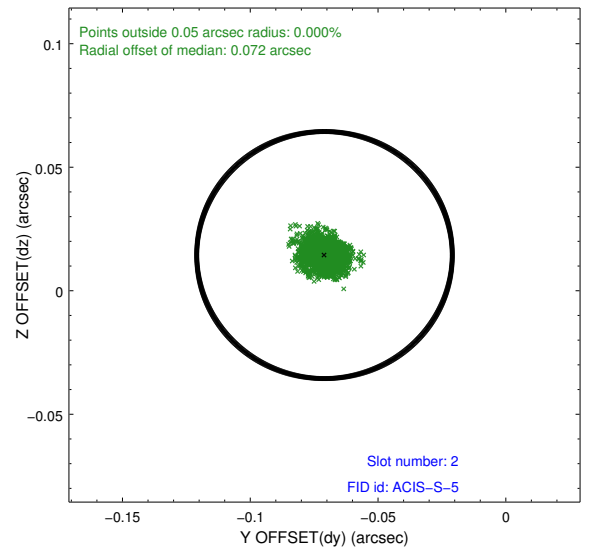
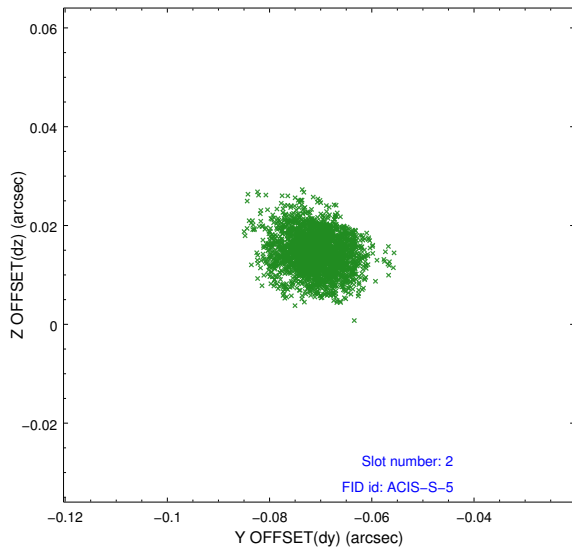
### 2.5.1 Slot 0



## 2.5.2 Slot 1



### 2.5.3 Slot 2



# A Summary

## A.1 Status

V&V Scientist	Jen Lauer
V&V Date (YYYY-MM-DD)	2012.12.14
V&V Edition	1
V&V Disposition and Status	OK
V&V Charge Time	10.18

## A.2 Comments

Window constraint satisfied.