

V&V Reference Report

L2 ASCDS Version : 8.4.5

Observation 4874 - L2 Version 3
Chandra X-Ray Center

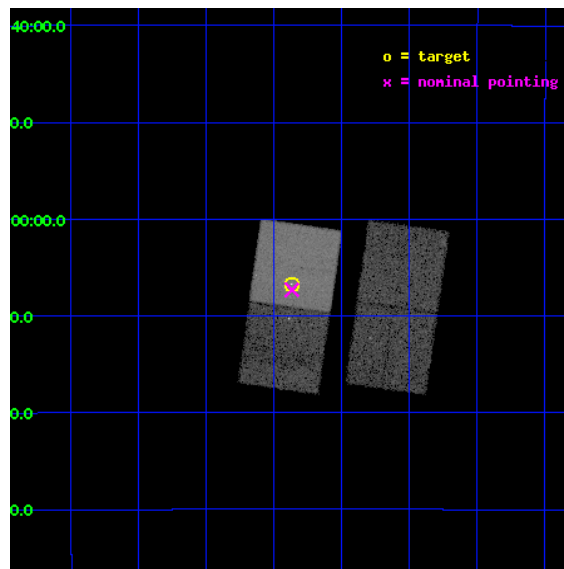
L2 Processing Date : Nov 11 2012

Contents

1	Front	2
2	OBI	3
2.1	OBI	3
2.1.1	Images	3
2.1.2	Bias	3
2.1.3	Parameters	4
2.1.4	Events	4
2.2	Compared Parameters	5
2.3	Aspect	6
2.4	Star Slots	9
2.4.1	Slot 3	9
2.4.2	Slot 4	10
2.4.3	Slot 5	11
2.4.4	Slot 6	12
2.4.5	Slot 7	13
2.5	FID Slots	14
2.5.1	Slot 0	14
2.5.2	Slot 1	15
2.5.3	Slot 2	16
A	Summary	17
A.1	Status	17
A.2	Comments	17

1 Front

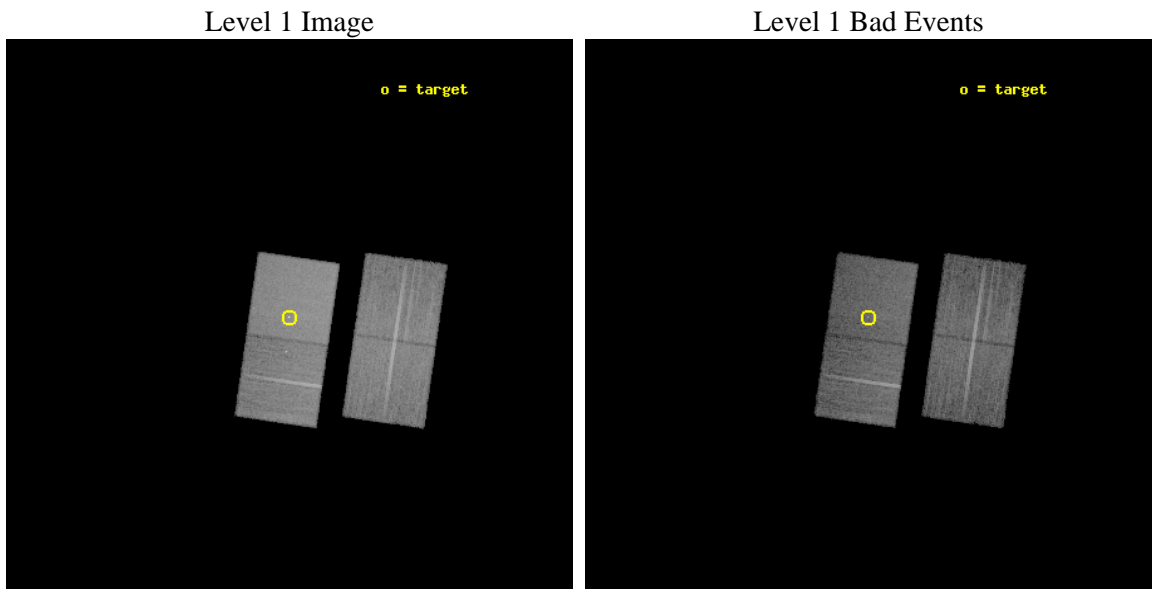
seq_num	700956	Sequence number
obs_id	4874	Observation id
title	The Nucleus and Environment of a Spiral Galaxy with a Double Radio Source	Proposal title
observer	Prof. William Keel	Principal investigator
object	0313-192	Source name
dtcycle	0	
cycle	P	events from which exps? Prim/Second/Both
ra_targ	48.967083	Observer's specified target RA [deg]
dec_targ	-19.112333	Observer's specified target Dec [deg]
ra_nom	48.96676059491	Nominal RA [deg]
dec_nom	-19.121998230749	Nominal Dec [deg]
roll_nom	278.23870178686	Nominal Roll [deg]
revision	3	Processing version of data
ontime	19167.299963117	Sum of GTIs [s]
livetime	18916.865078338	Livetime [s]
ontime2	19167.299963117	Sum of GTIs [s]
ontime3	19164.15900287	Sum of GTIs [s]
ontime6	19167.299963117	Sum of GTIs [s]
ontime7	19167.299963117	Sum of GTIs [s]
l2events	109394	Number of level 2 events



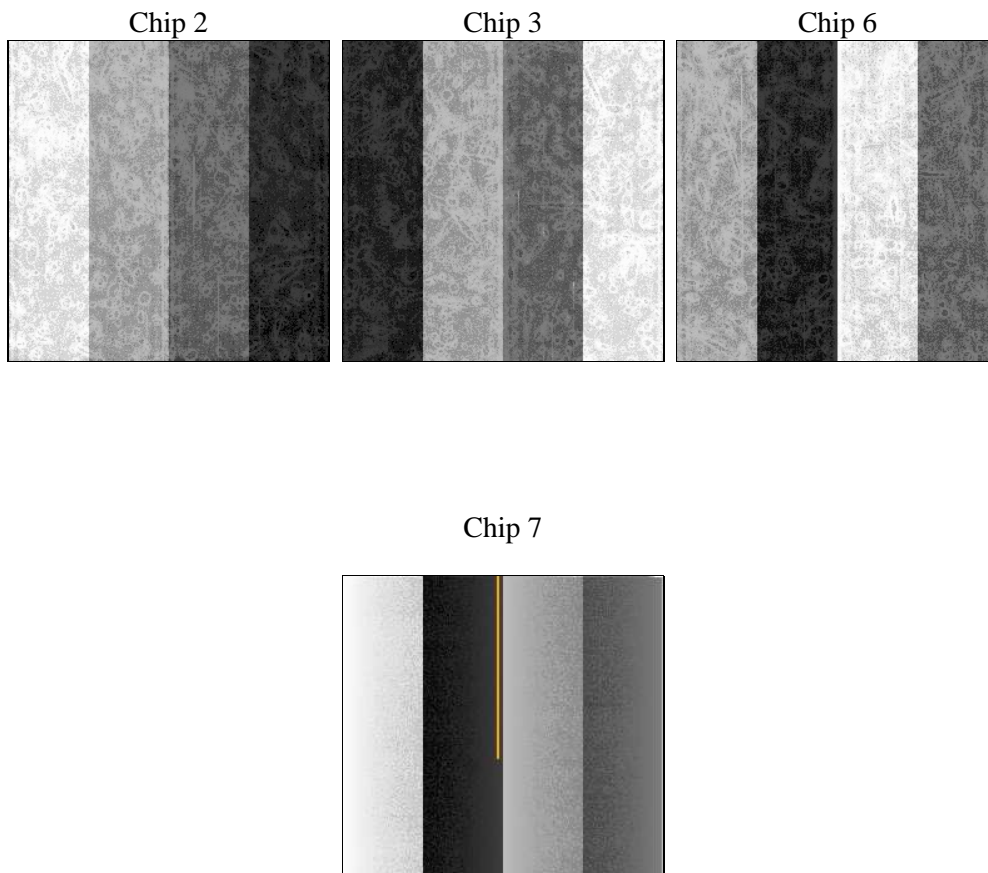
2 OBI

2.1 OBI

2.1.1 Images



2.1.2 Bias



2.1.3 Parameters

obi_num	0	Obi number	sched_exp_time	19000.000000	[s] Scheduled observation exposure time
ascdsver	8.4.5	Processing system revision	ontime	19167.299963117	Sum of GTIs [s]
caldbver	4.5.2	 	ontime2	19167.299963117	Sum of GTIs [s]
date	2012-11-11T23:53:57	Date and time of file creation	ontime3	19164.15900287	Sum of GTIs [s]
revision	3	Processing version of data	ontime6	19167.299963117	Sum of GTIs [s]
			ontime7	19167.299963117	Sum of GTIs [s]
			l1events	588300	Number of level 1 events

2.1.4 Events

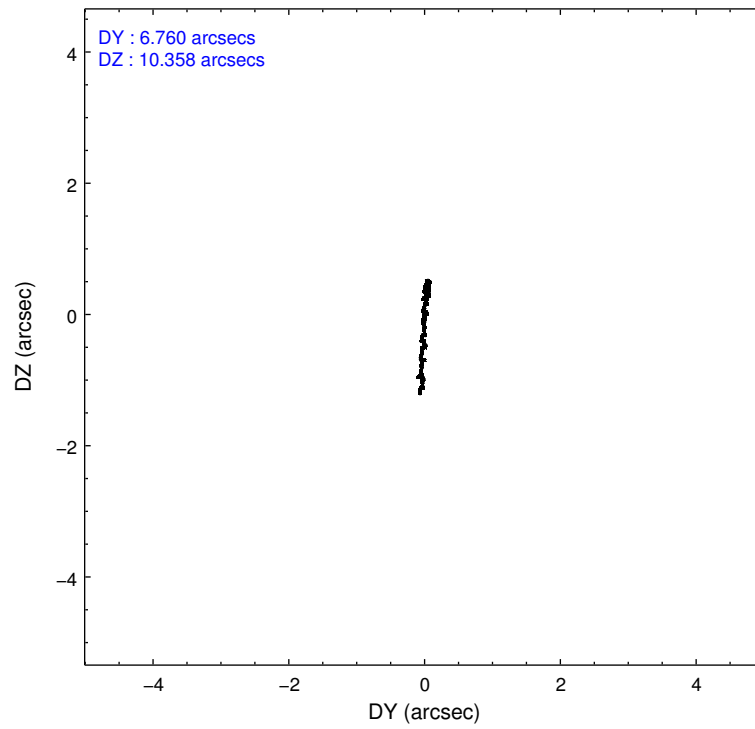
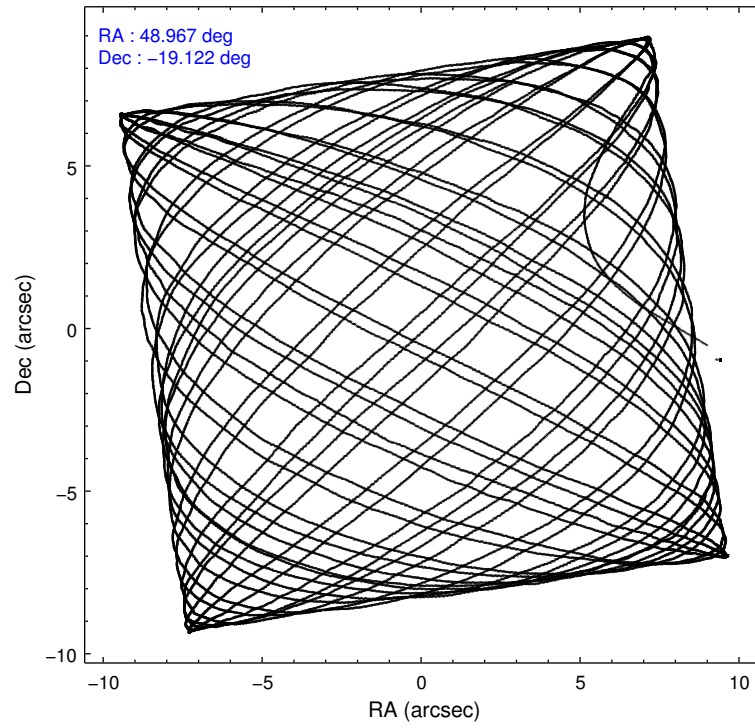
	ccd 2	ccd 3	ccd 6	ccd 7
level 1 events	132477	131687	137978	186158
rejected events	117764	117250	122820	114083
rejected %	88%	89%	89%	61%

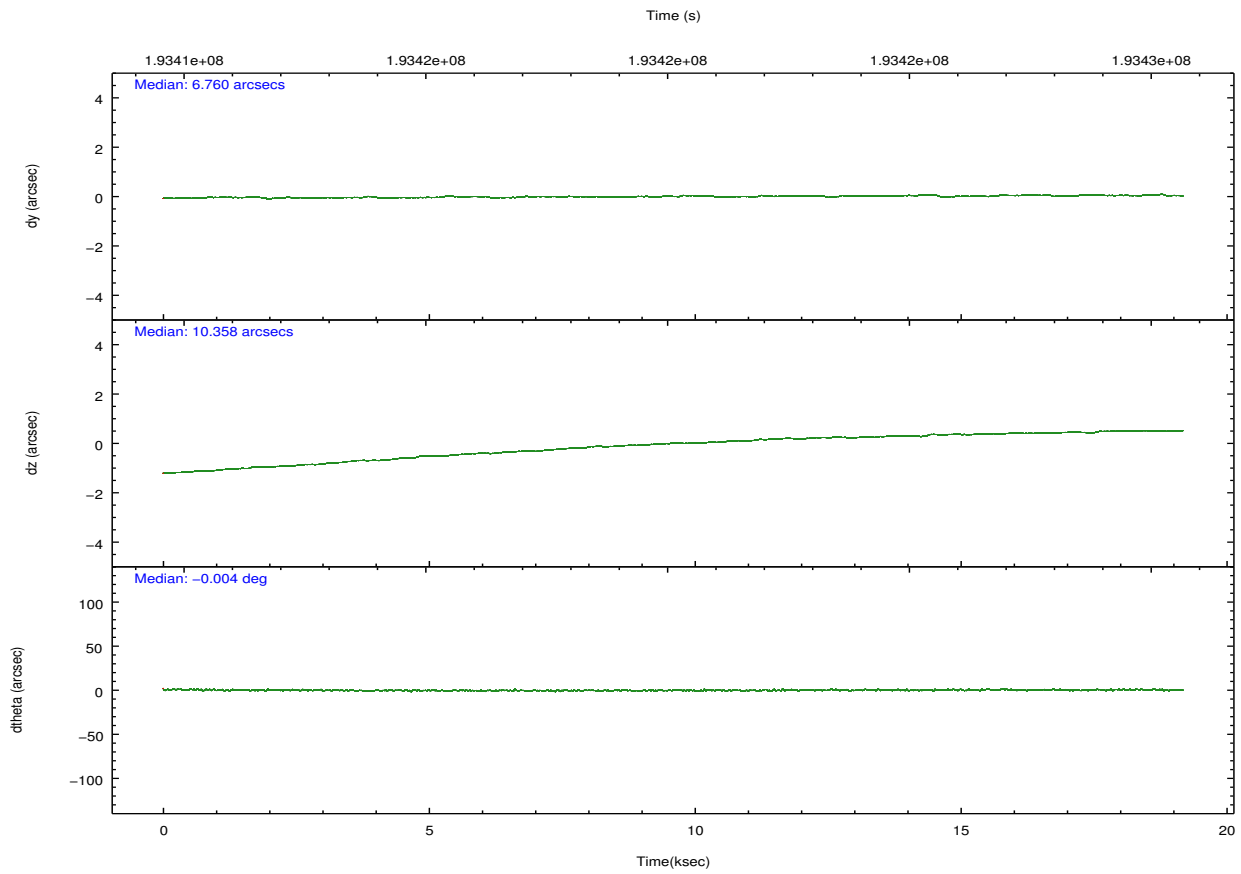
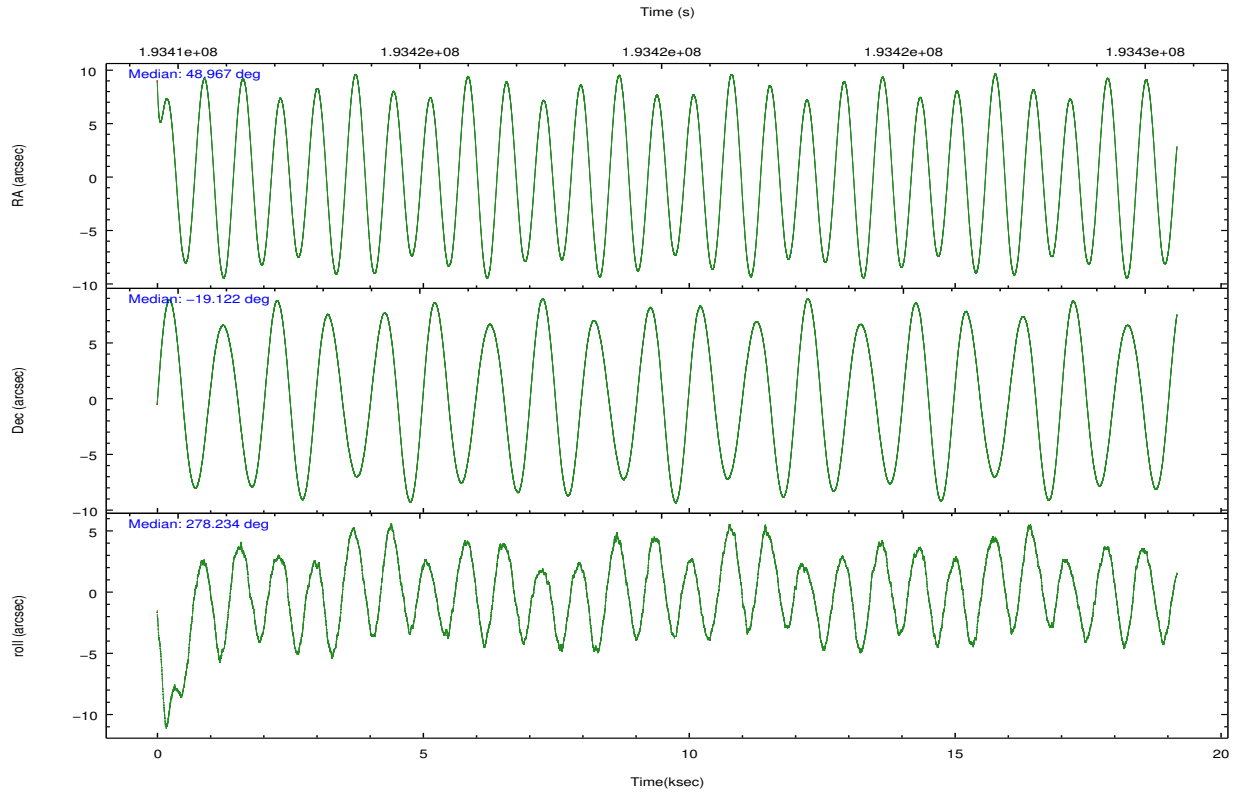
	ccd 2	ccd 3	ccd 6	ccd 7
grade 0 events	7105	6847	6680	7334
	5%	5%	4%	3%
grade 1 events	80	89	63	164
	0%	0%	0%	0%
grade 2 events	3208	3032	3363	15626
	2%	2%	2%	8%
grade 3 events	1560	1506	1622	6959
	1%	1%	1%	3%
grade 4 events	1550	1552	1562	6953
	1%	1%	1%	3%
grade 5 events	5304	5869	6281	17664
	4%	4%	4%	9%
grade 6 events	2551	2736	3258	41363
	1%	2%	2%	22%
grade 7 events	111119	110056	115149	90095
	83%	83%	83%	48%

2.2 Compared Parameters

Parameter	Planned	Actual	Parameter	Planned	Actual
Instrument	ACIS	ACIS	Obspar format version number	7	7
Detector	ACIS-2367	ACIS-2367	Obspar file type	PREDICTED	ACTUAL
Grating	NONE	NONE	Obspar update status	NONE	UPDATED
Data mode	FAINT	FAINT	Number of optional ACIS chips dropped	0	0
Observation mode	POINTING	POINTING	On-chip summing requested	N	N
[deg] Pointing RA	48.948613	48.96676059490974	Subarray requested	NONE	NONE
[deg] Pointing Dec	-19.100839	-19.12199823074902	Alternating exposures requested	N	N
[deg] Pointing Roll	278.076133	278.2387017868556	[s] Primary exposure time	0.000000	3.1
[mm] SIM focus pos	-0.684267	-0.6828225247311905			
[mm] SIM defocus	0	0.001444936568705701			
[mm] SIM translation stage pos	-190.132523	-190.1400660498719			
[mm] SIM translation stage offset	0	0.00754346686406393			
[s] Observation start time (MET)	193410699.184000	193408860.93966			
Observation start date	2004-02-17T13:10:35	2004-02-17T12:41:00			
[s] Observation end time (MET)	193429699.184000	193431390.44064			
Observation end date	2004-02-17T18:27:15	2004-02-17T18:56:30			
Read mode	TIMED	TIMED			

2.3 Aspect





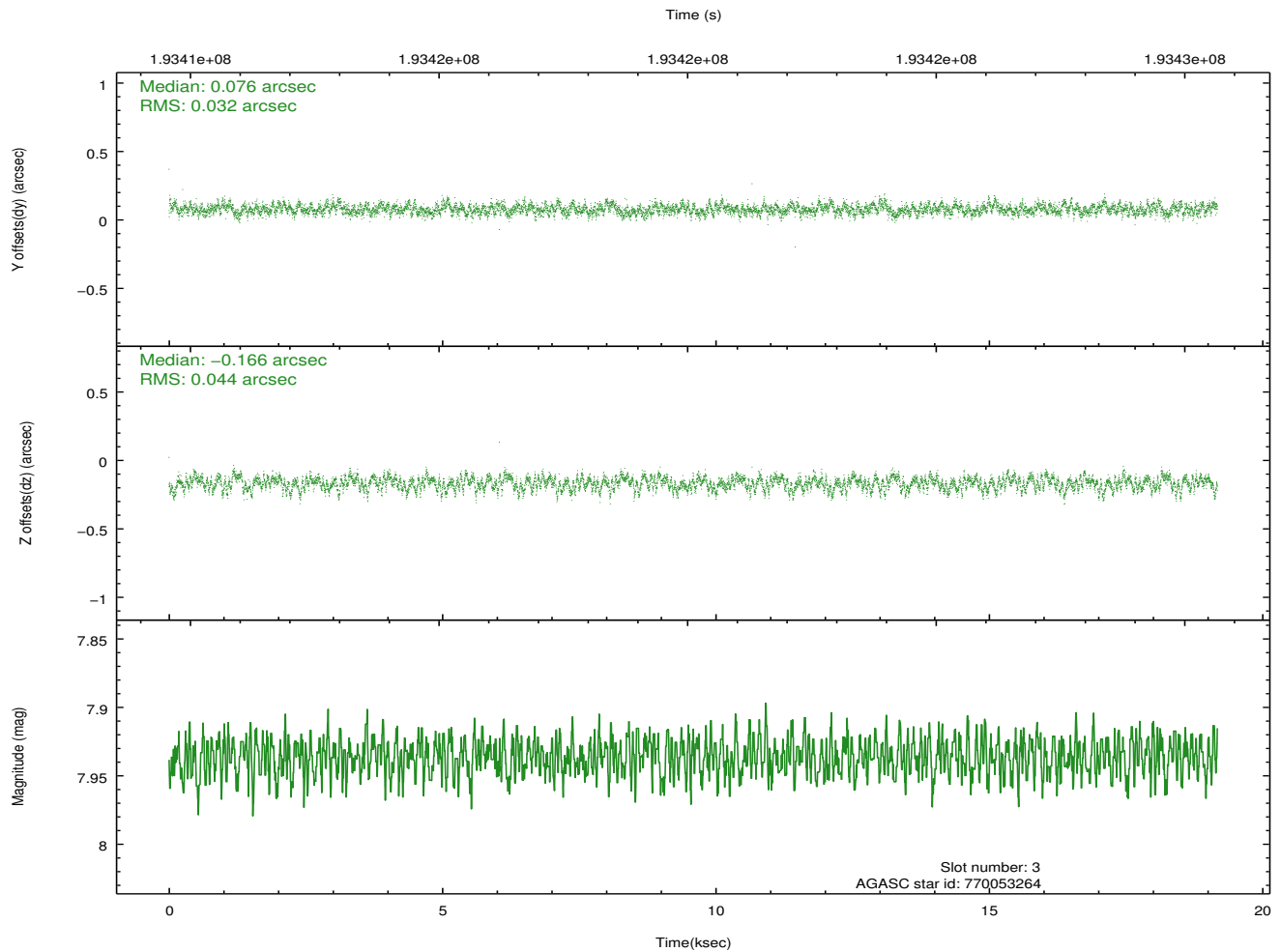
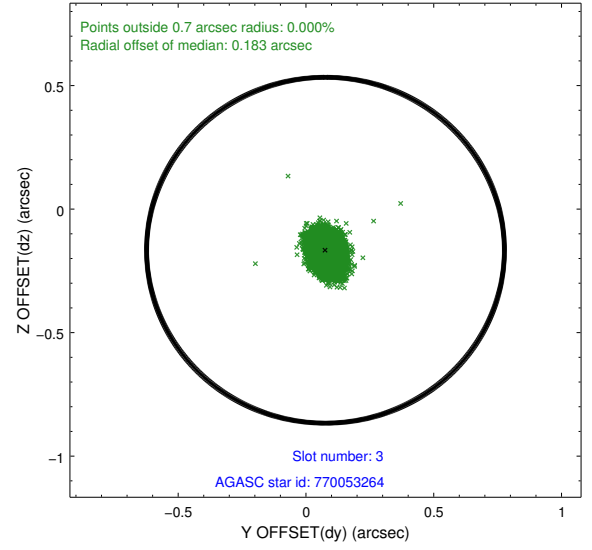
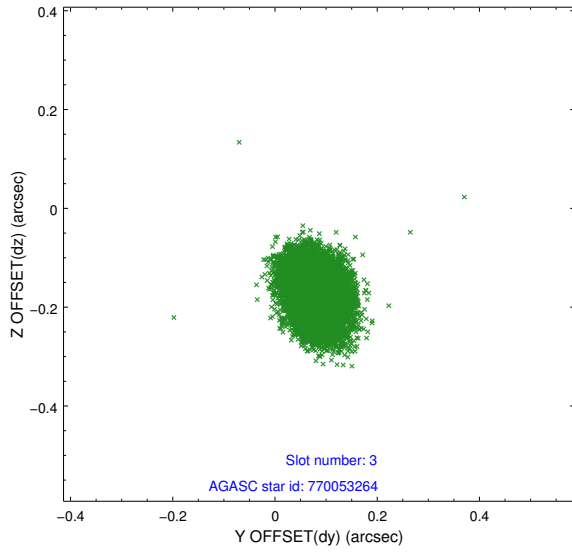
Slot Statistics

slot	status	id	mag	n_pts	med_dy	med_dz	dr1	dr2	ra	dec	mean_y	mean_z
0	FID	ACIS-S-1	7.18	4678	0.013	-0.040	0.027	0.045	0.000000	0.000000	936.51	-1727.15
1	FID	ACIS-S-2	7.10	4677	-0.082	-0.021	0.014	0.021	0.000000	0.000000	-759.37	-1731.87
2	FID	ACIS-S-4	7.20	4677	0.043	0.066	0.015	0.027	0.000000	0.000000	2153.72	176.88
3	GUIDE	770053264	7.94	9353	0.076	-0.166	0.058	0.094	49.018861	-19.354622	938.57	108.10
4	GUIDE	770055256	9.54	9345	0.023	0.159	0.098	0.154	49.303658	-19.207345	550.88	1141.46
5	GUIDE	770054144	9.46	9339	0.116	0.103	0.114	0.188	48.909948	-19.344110	849.23	-252.46
6	GUIDE	770054376	8.99	9352	-0.059	0.059	0.084	0.133	49.351465	-18.393938	-2324.03	1720.25
7	GUIDE	770052776	9.78	9352	-0.157	-0.150	0.109	0.172	48.269580	-18.540662	-2317.76	-2011.94

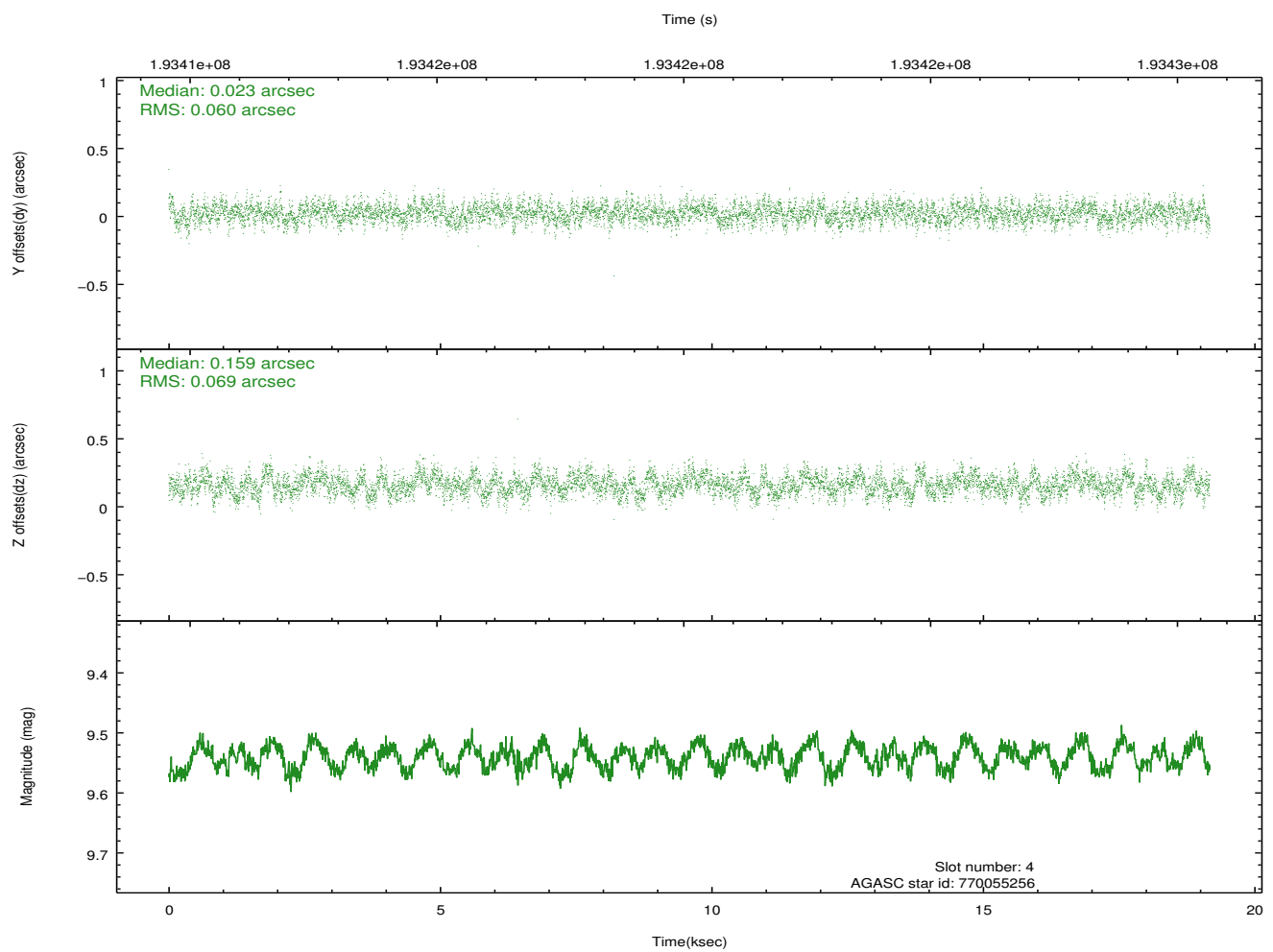
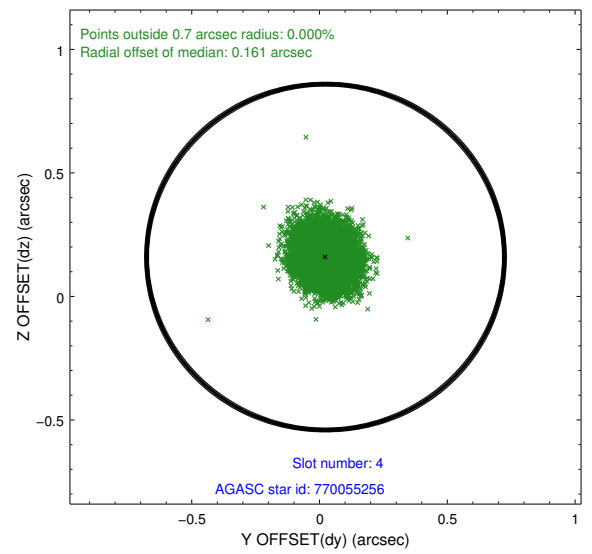
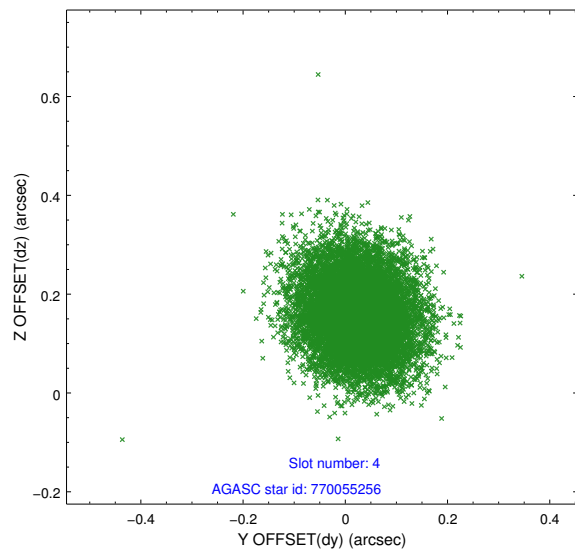
∞

2.4 Star Slots

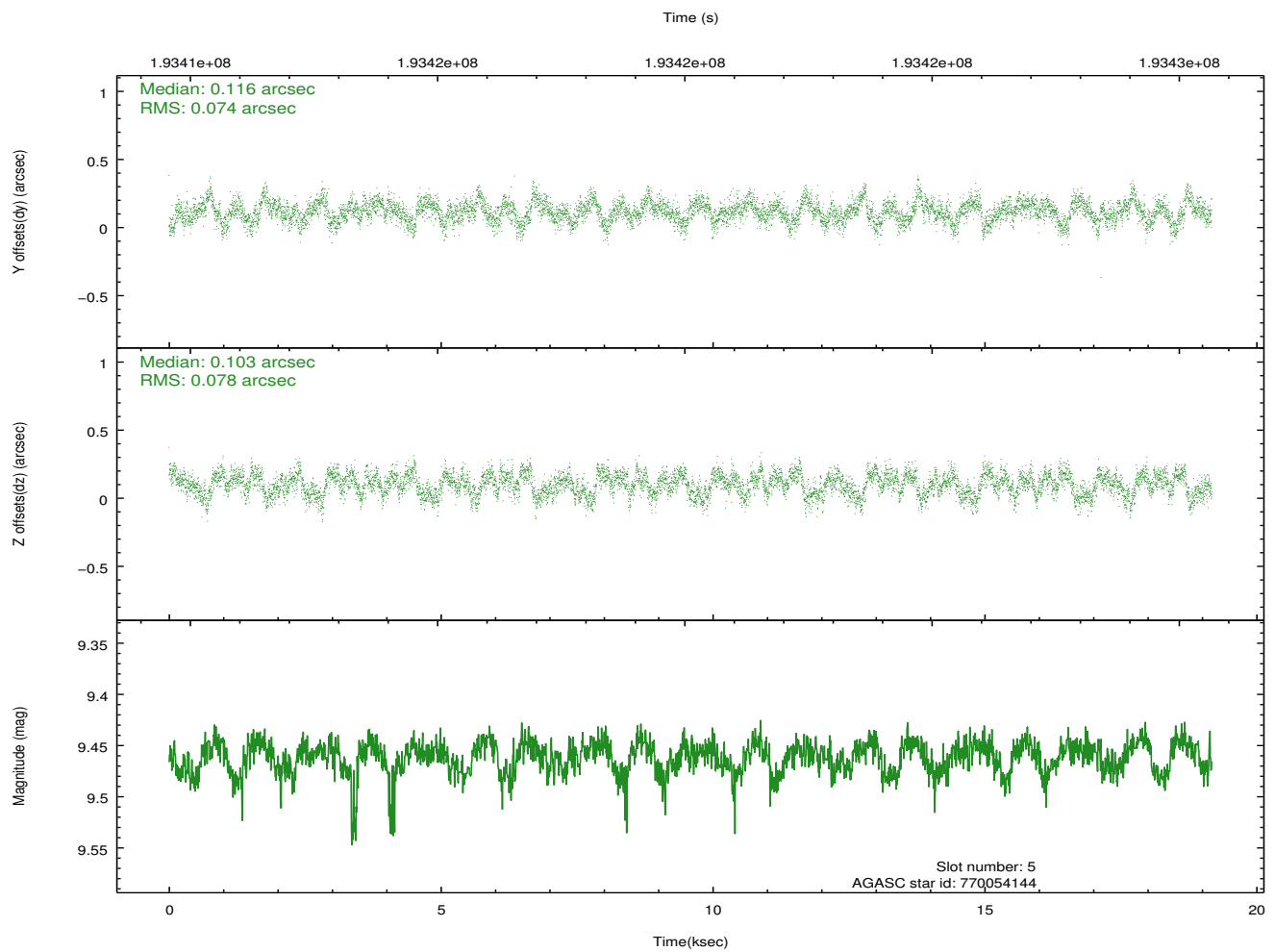
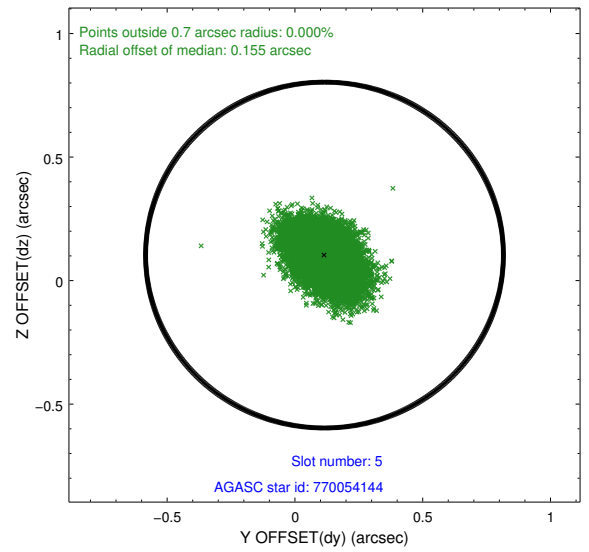
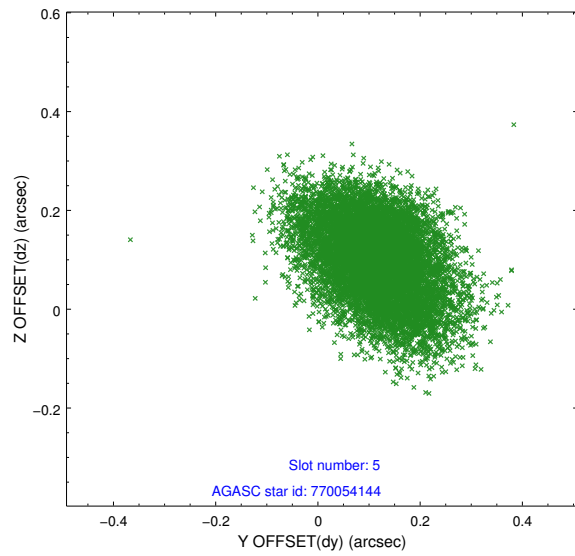
2.4.1 Slot 3



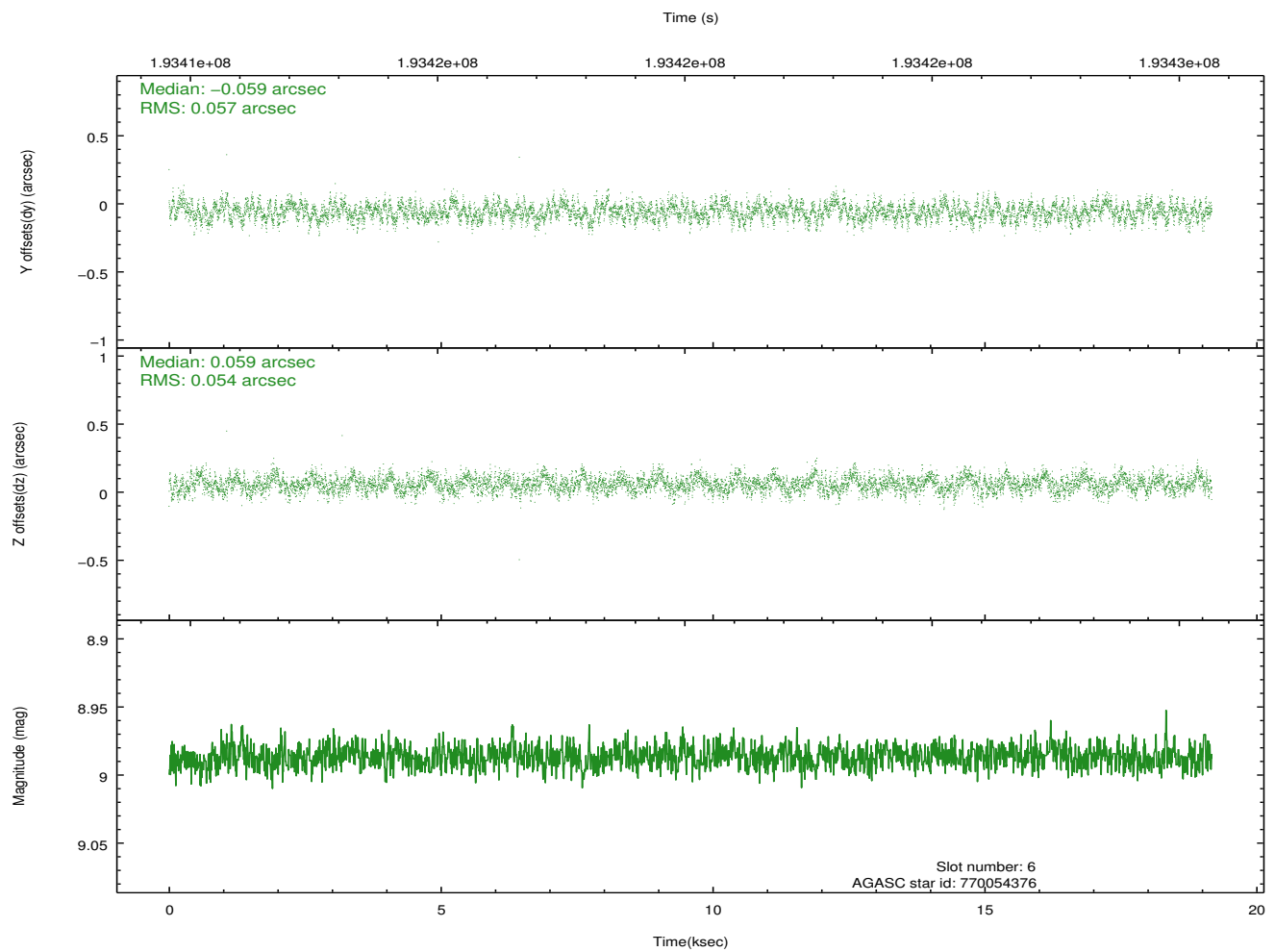
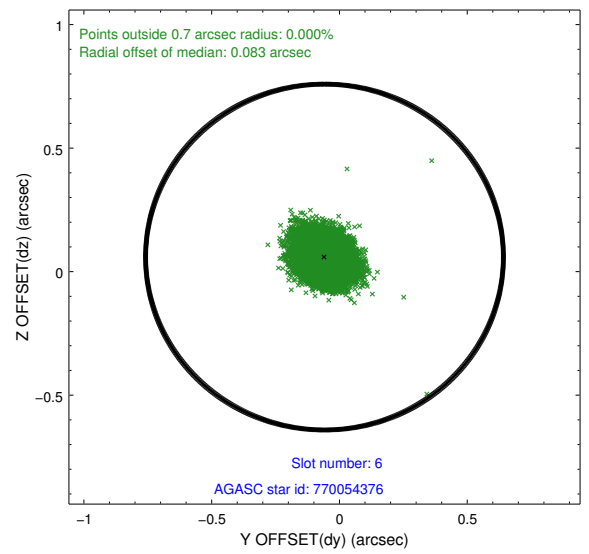
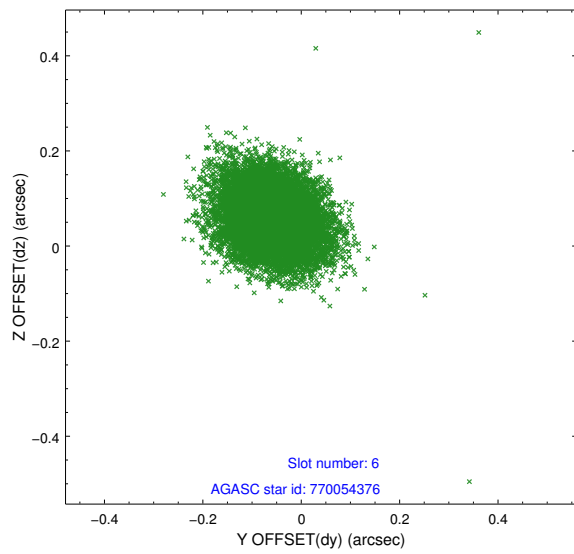
2.4.2 Slot 4



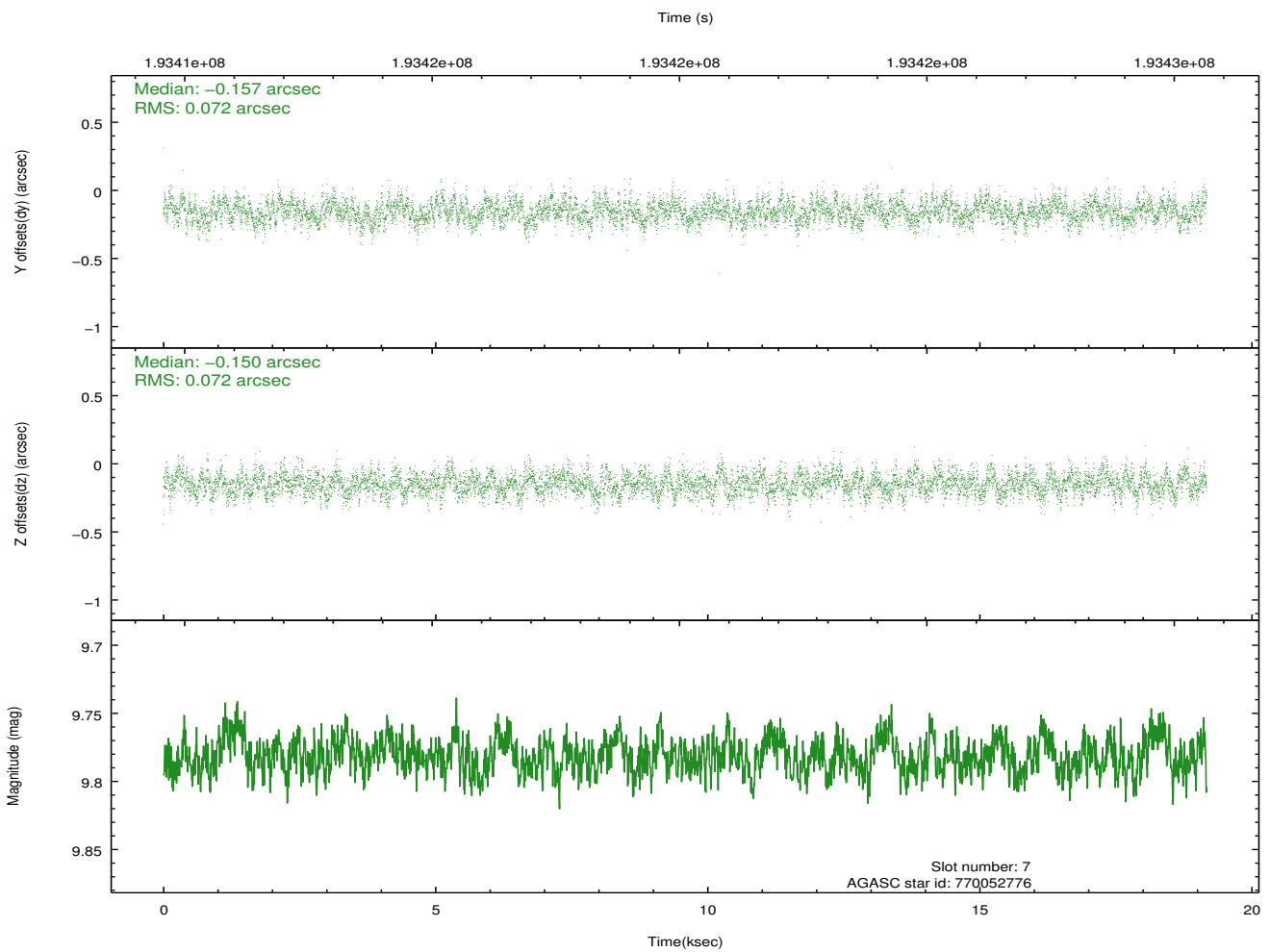
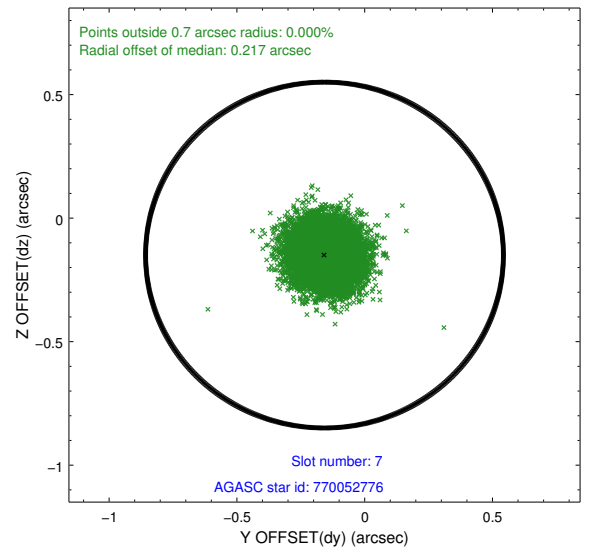
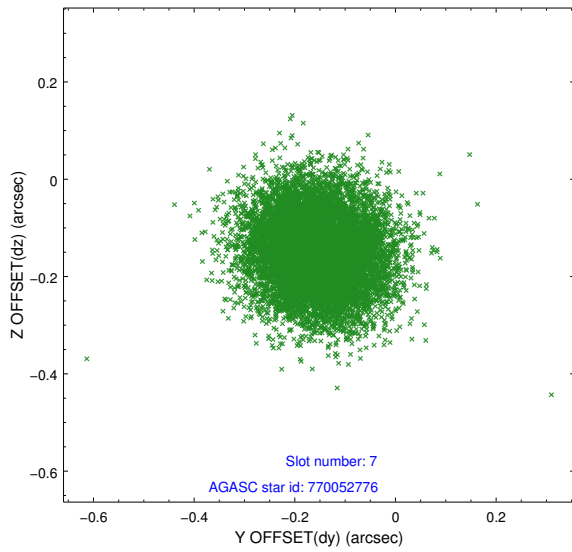
2.4.3 Slot 5



2.4.4 Slot 6

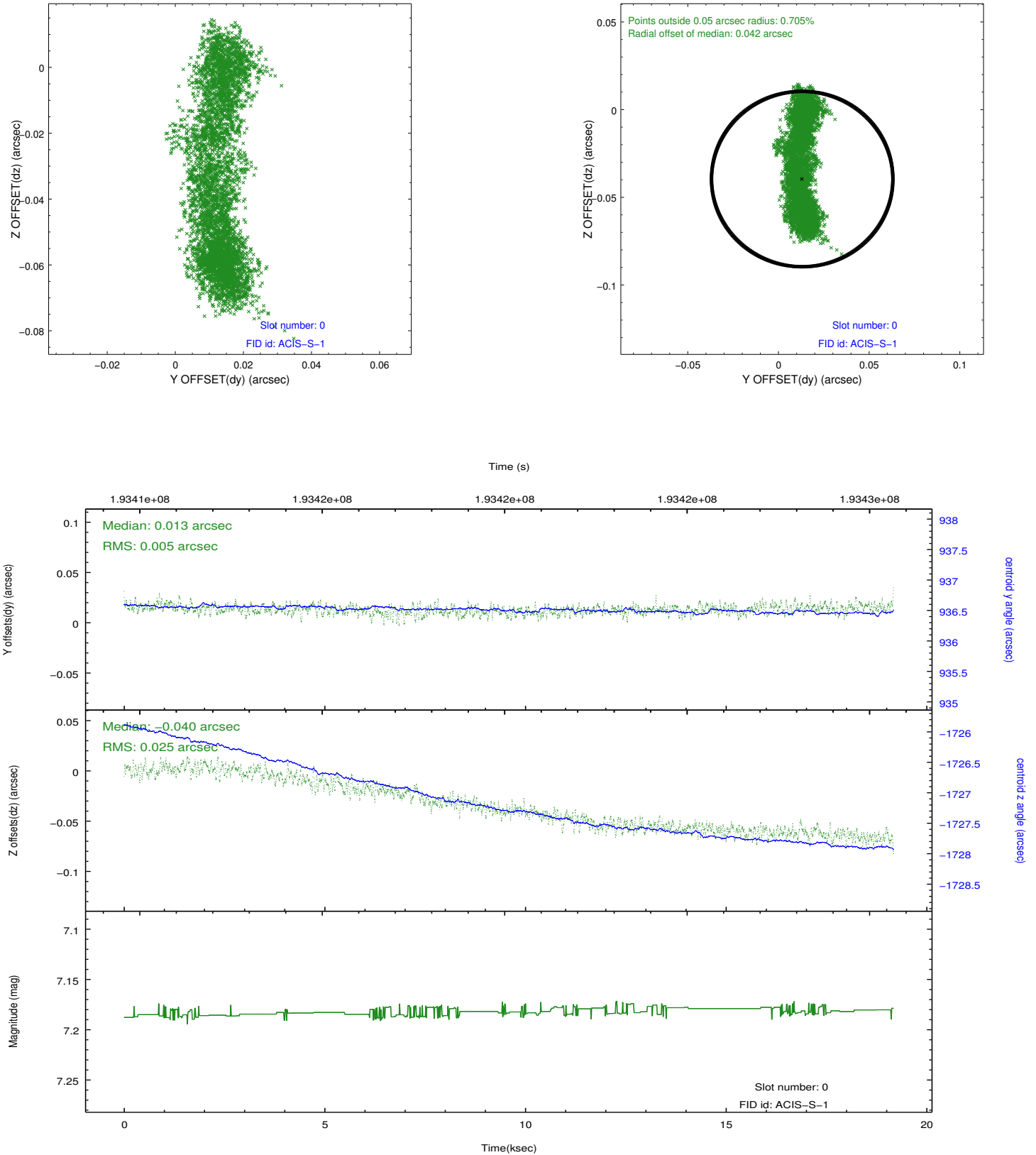


2.4.5 Slot 7

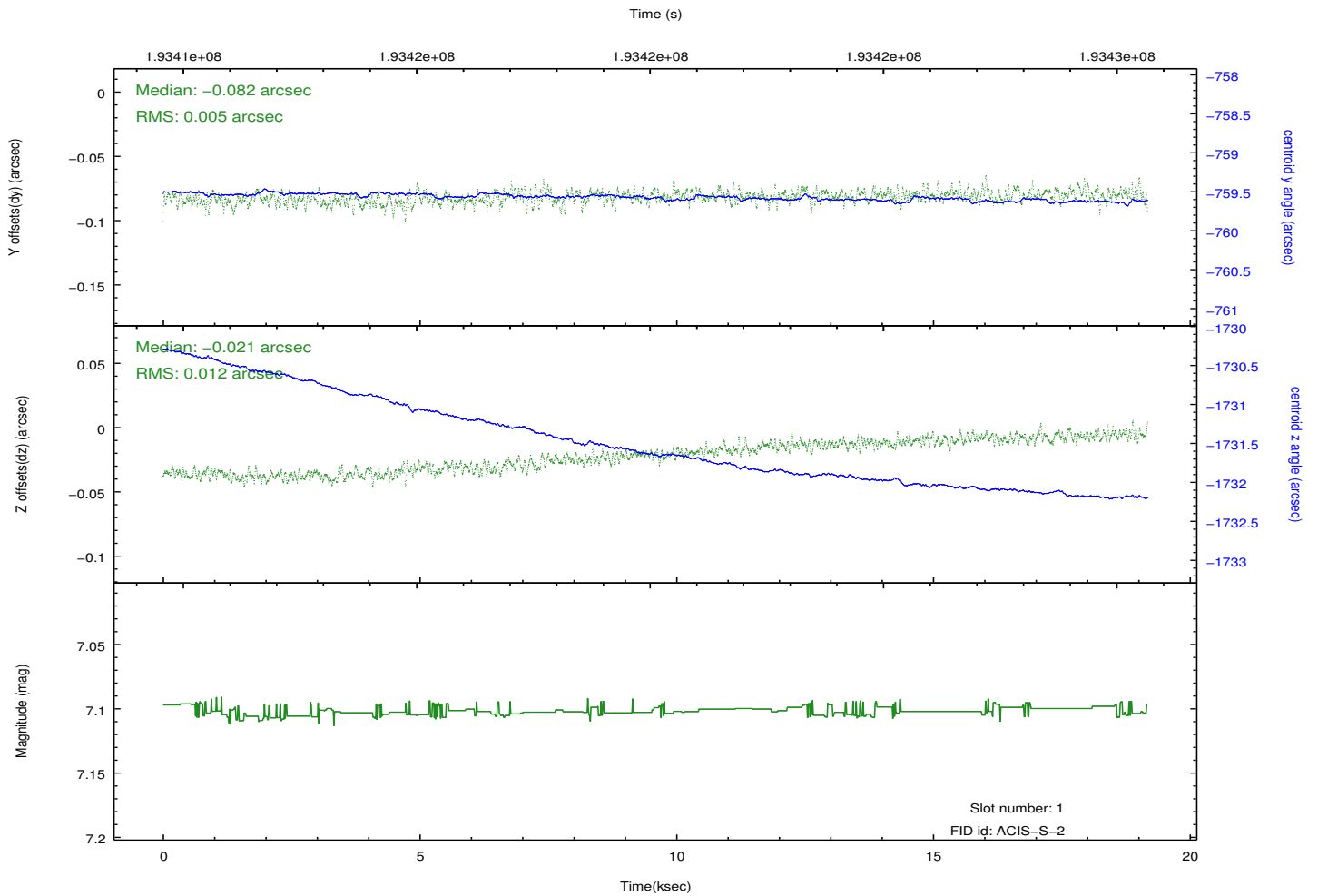
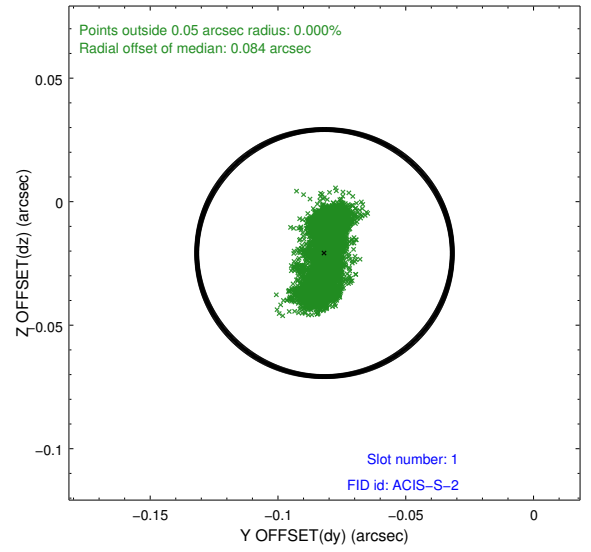
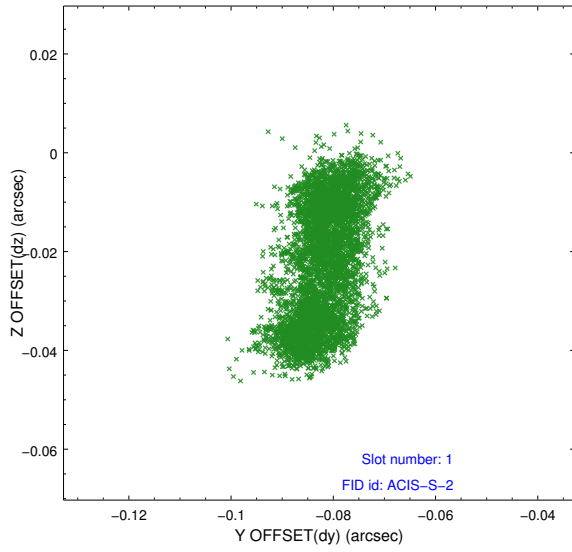


2.5 FID Slots

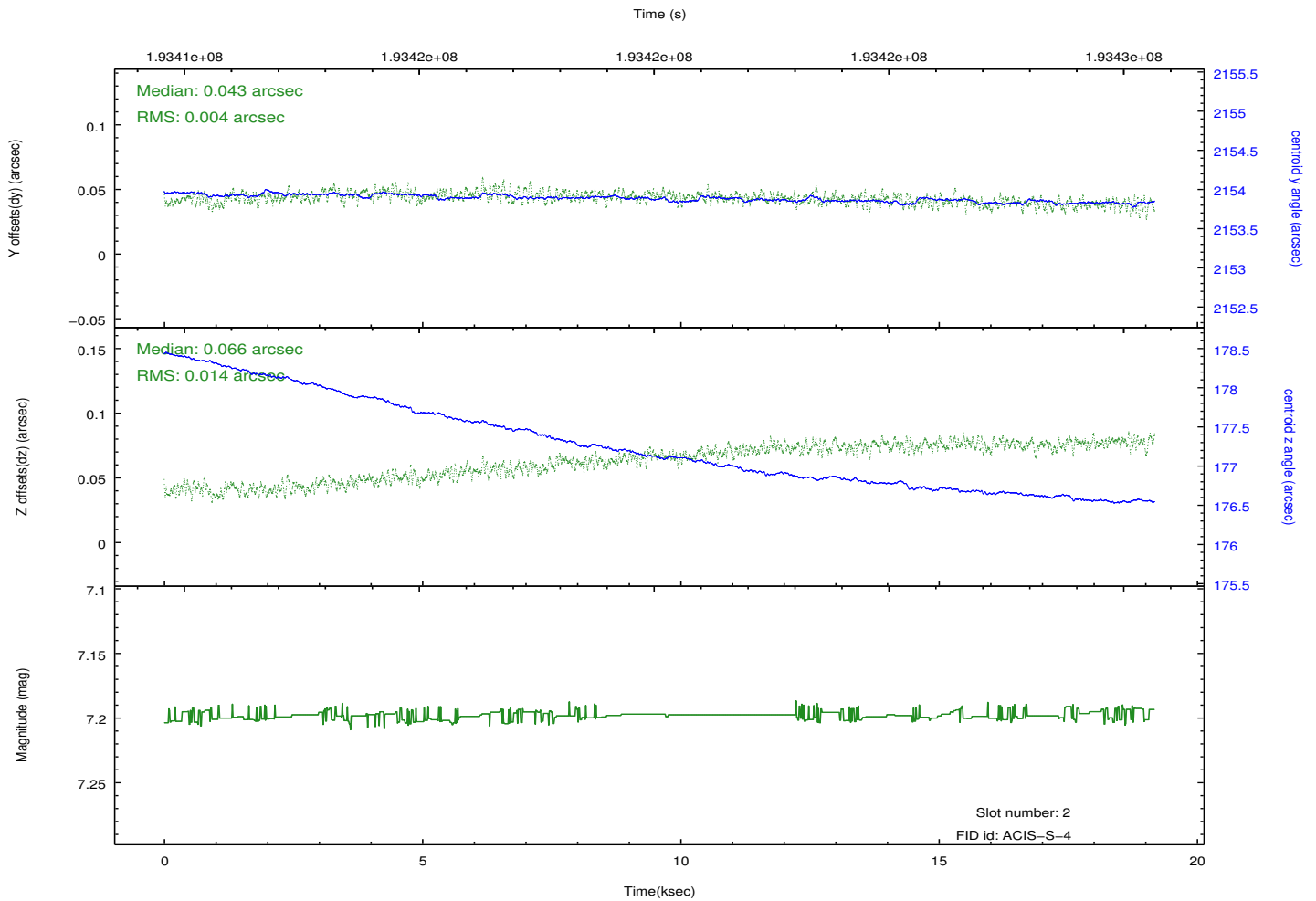
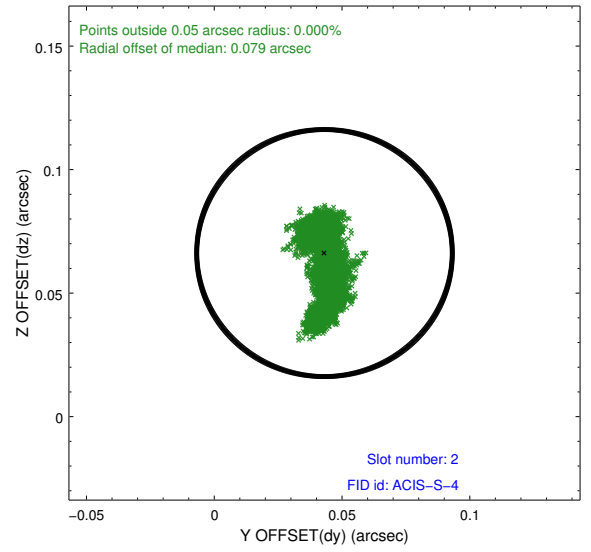
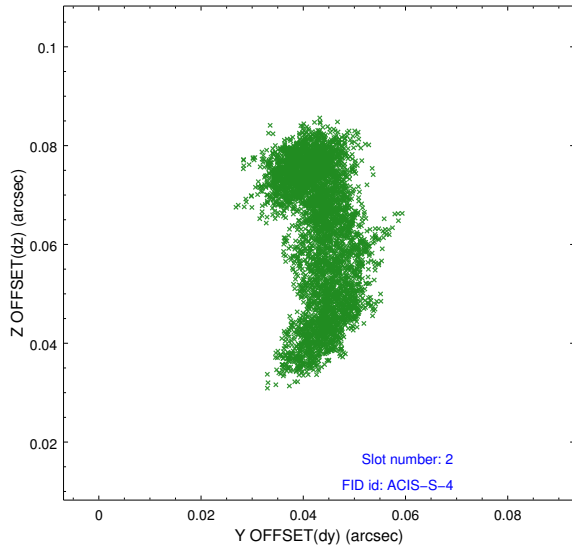
2.5.1 Slot 0



2.5.2 Slot 1



2.5.3 Slot 2



A Summary

A.1 Status

V&V Scientist	Jen Lauer
V&V Date (YYYY-MM-DD)	2012.12.11
V&V Edition	1
V&V Disposition and Status	OK
V&V Charge Time	19.167

A.2 Comments