

V&V Reference Report

L2 ASCDS Version : 8.4.5

Observation 4904 - L2 Version 3
Chandra X-Ray Center

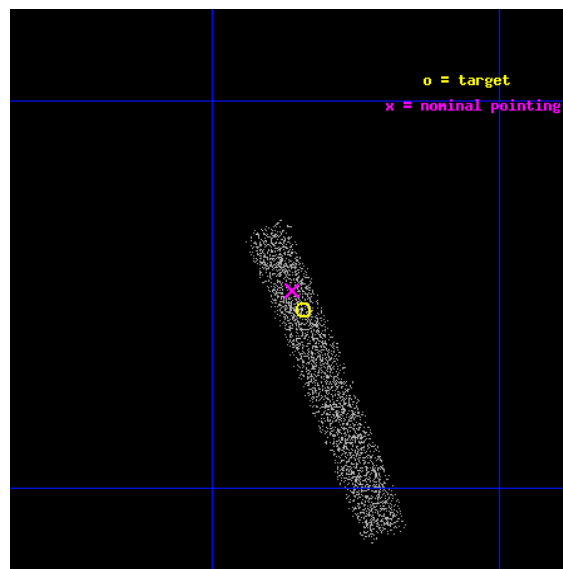
L2 Processing Date : Nov 8 2012

Contents

1	Front	2
2	OBI	3
2.1	OBI	3
2.1.1	Images	3
2.1.2	Bias	3
2.1.3	Parameters	4
2.1.4	Events	4
2.2	Compared Parameters	5
2.3	Aspect	6
2.4	Star Slots	9
2.4.1	Slot 3	9
2.4.2	Slot 4	10
2.4.3	Slot 5	11
2.4.4	Slot 6	12
2.4.5	Slot 7	13
2.5	FID Slots	14
2.5.1	Slot 0	14
2.5.2	Slot 1	15
2.5.3	Slot 2	16
A	Summary	17
A.1	Status	17
A.2	Comments	17

1 Front

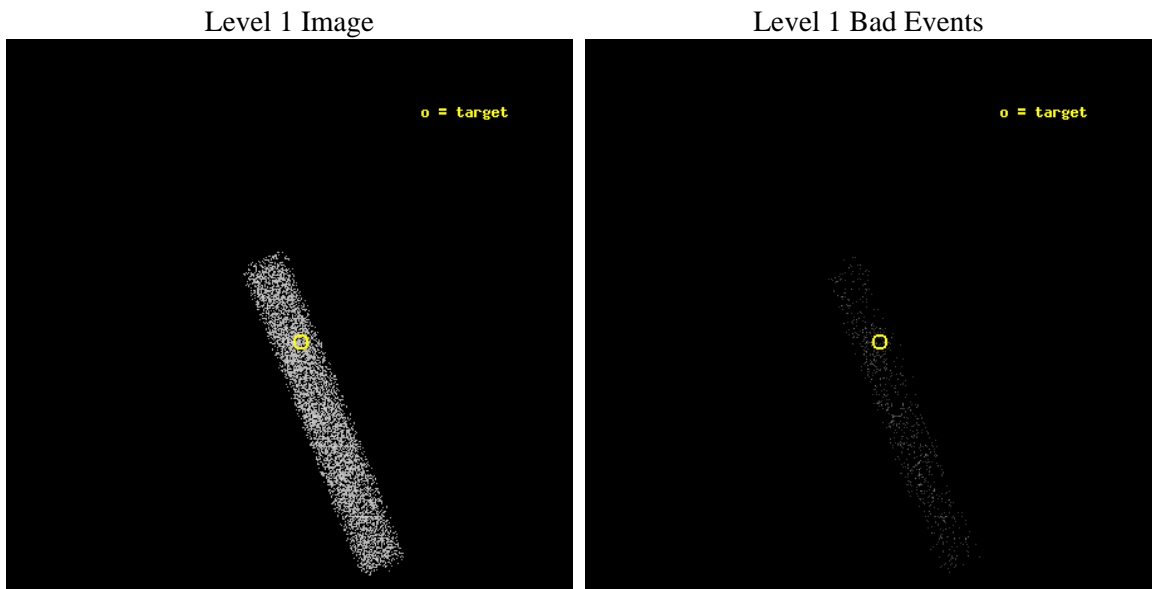
seq_num	700985	Sequence number
obs_id	4904	Observation id
title	The X-ray Spectra of Red Quasars	Proposal title
observer	Dr Mark Lacy	Principal investigator
object	FTM 0904-0145	Source name
dtcycle	0	
cycle	P	events from which exps? Prim/Second/Both
ra_targ	136.210417	Observer's specified target RA [deg]
dec_targ	-1.756833	Observer's specified target Dec [deg]
ra_nom	136.21549673938	Nominal RA [deg]
dec_nom	-1.7486400185198	Nominal Dec [deg]
roll_nom	68.326057809073	Nominal Roll [deg]
revision	3	Processing version of data
ontime	8286.4001234472	Sum of GTIs [s]
livetime	7515.327519905	Livetime [s]
ontime7	8286.4001234472	Sum of GTIs [s]
l2events	3393	Number of level 2 events



2 OBI

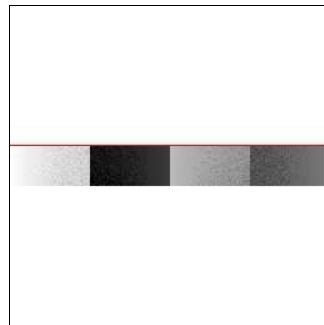
2.1 OBI

2.1.1 Images



2.1.2 Bias

Chip 7



2.1.3 Parameters

obi_num	1	Obi number	sched_exp_time	8135.543000	[s] Scheduled observation exposure time
ascdsver	8.4.5	Processing system revision	ontime	8286.4001234472	Sum of GTIs [s]
caldbver	4.5.2	 	ontime7	8286.4001234472	Sum of GTIs [s]
date	2012-11-08T07:23:49	Date and time of file creation	l1events	8626	Number of level 1 events
revision	3	Processing version of data			

2.1.4 Events

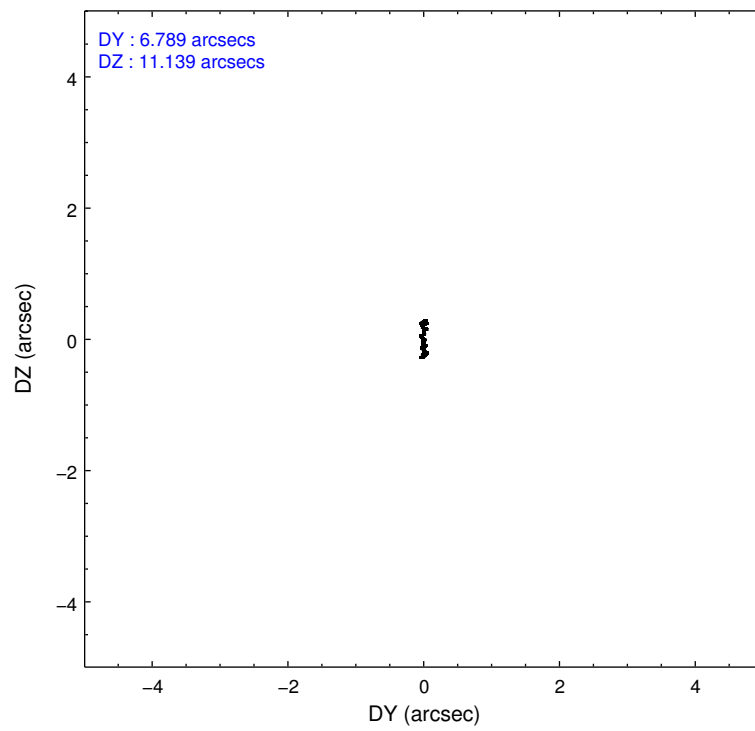
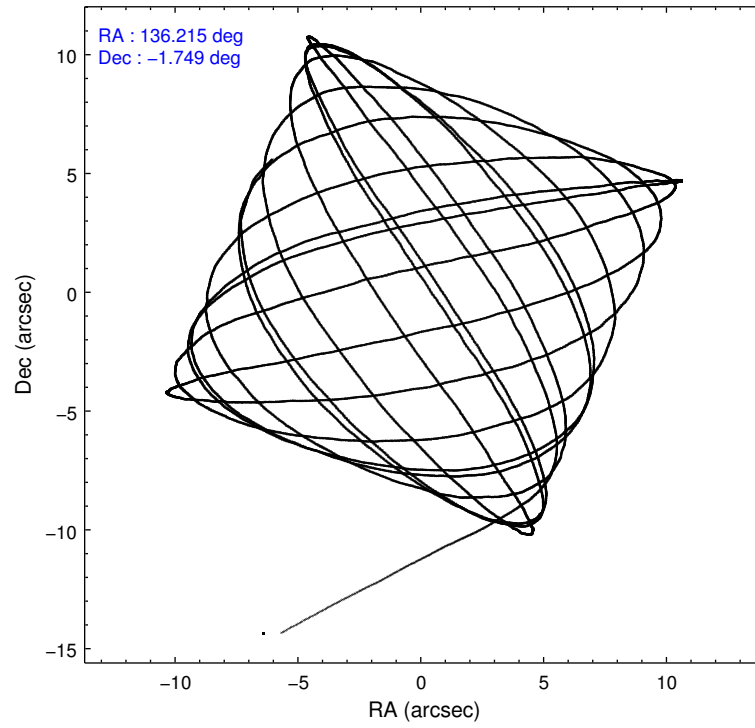
	ccd 7
level 1 events	8626
rejected events	5087
rejected %	58%

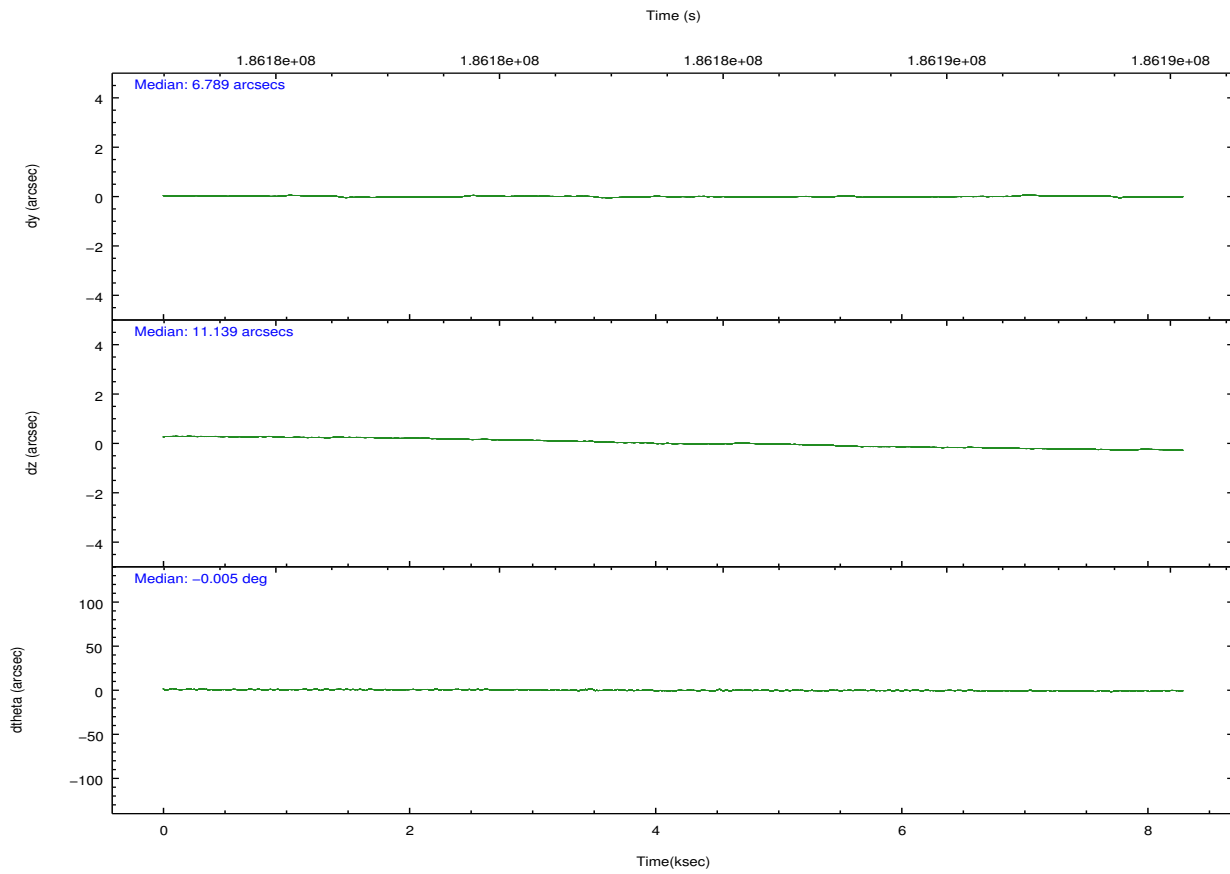
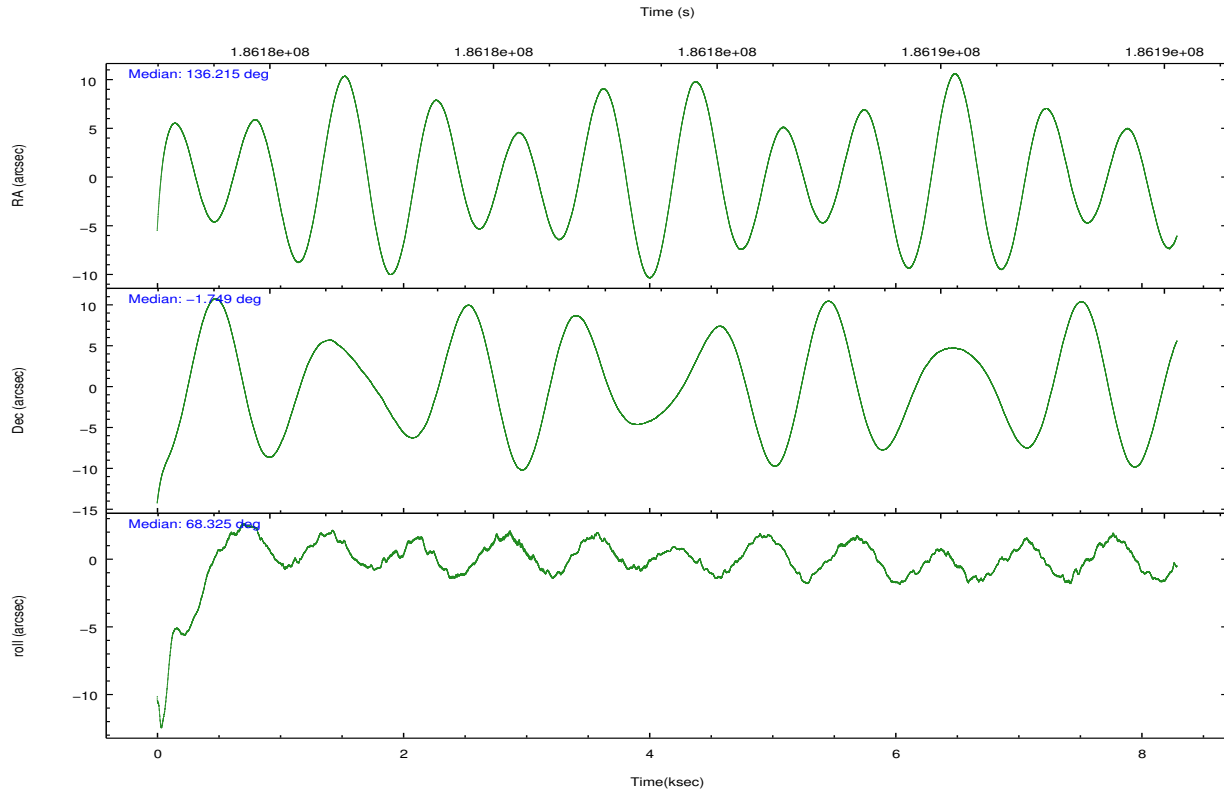
	ccd 7
grade 0 events	419
	4%
grade 1 events	12
	0%
grade 2 events	745
	8%
grade 3 events	484
	5%
grade 4 events	481
	5%
grade 5 events	758
	8%
grade 6 events	1818
	21%
grade 7 events	3909
	45%

2.2 Compared Parameters

Parameter	Planned	Actual	Parameter	Planned	Actual
Instrument	ACIS	ACIS	Obspar format version number	7	7
Detector	ACIS-7	ACIS-7	Obspar file type	PREDICTED	ACTUAL
Grating	NONE	NONE	Obspar update status	NONE	UPDATED
Data mode	FAINT	FAINT	Number of optional ACIS chips dropped	0	0
Observation mode	POINTING	POINTING	On-chip summing requested	N	N
[deg] Pointing RA	136.219819	136.2154967393815	Subarray requested	CUSTOM	1/8
[deg] Pointing Dec	-1.775502	-1.748640018519823	Subarray start row	449	449
[deg] Pointing Roll	68.169562	68.32605780907313	Subarray row count	128	128
[mm] SIM focus pos	-0.684267	-0.6828225247311905	Alternating exposures requested	N	N
[mm] SIM defocus	0	0.001444936568705701	[s] Primary exposure time	0.000000	0.4
[mm] SIM translation stage pos	-190.132523	-190.1400660498719			
[mm] SIM translation stage offset	0	0.00754346686406393			
[s] Observation start time (MET)	186179556.184000	186178494.22482			
Observation start date	2003-11-25T20:31:32	2003-11-25T20:14:54			
[s] Observation end time (MET)	186187692.184000	186188006.73773			
Observation end date	2003-11-25T22:47:08	2003-11-25T22:53:26			
Read mode	TIMED	TIMED			

2.3 Aspect



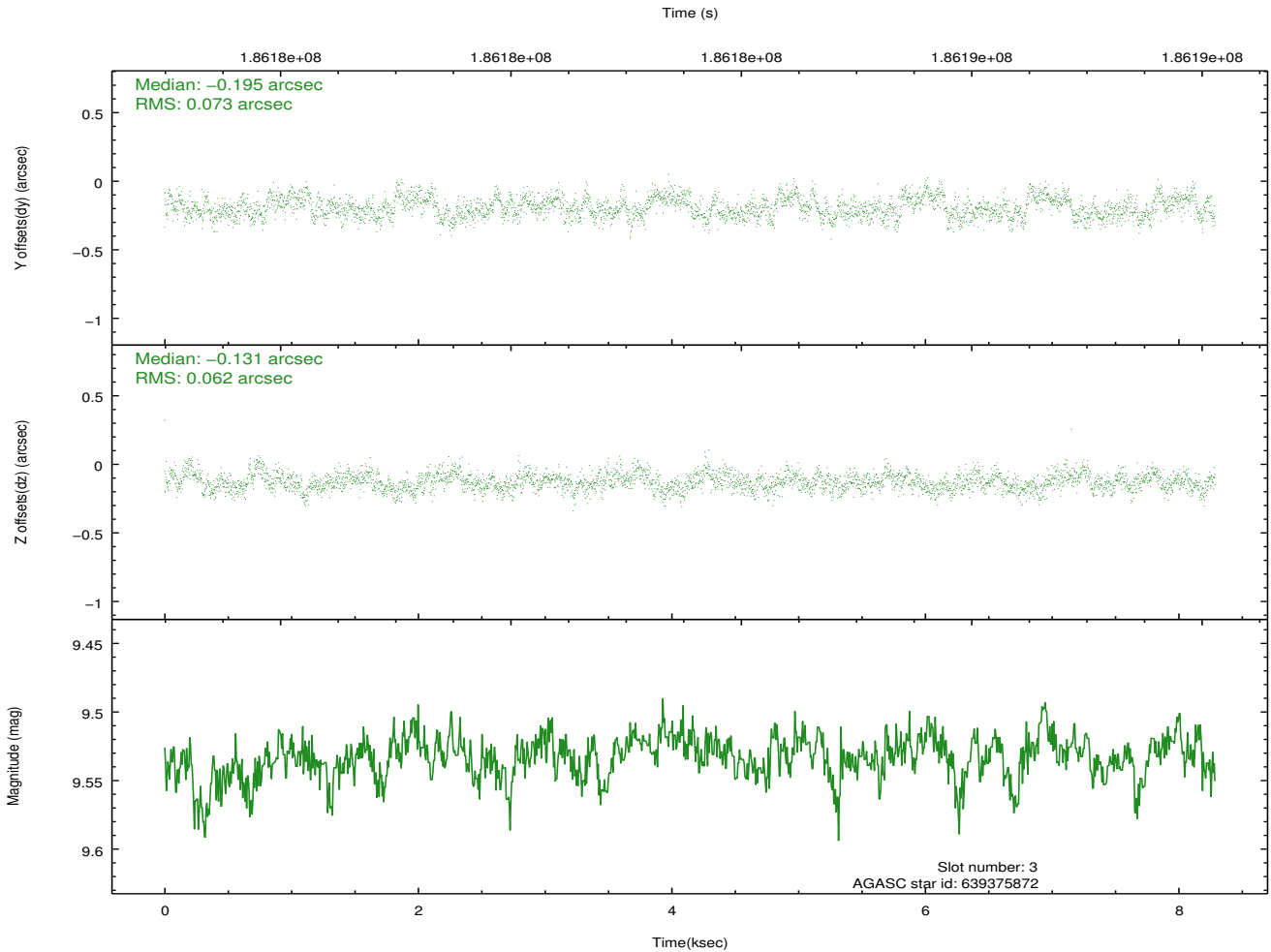
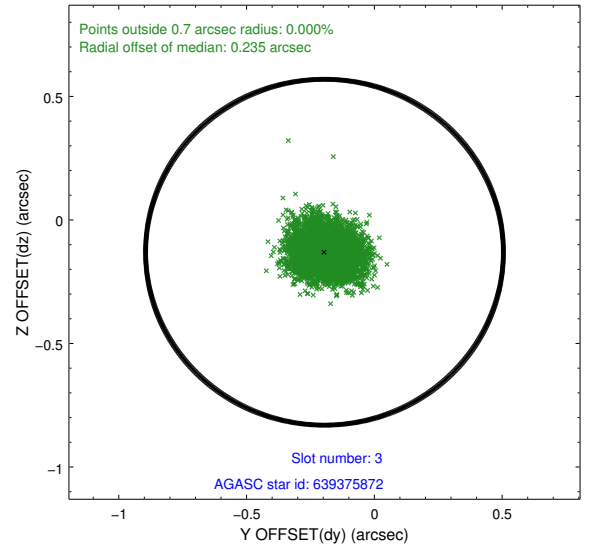
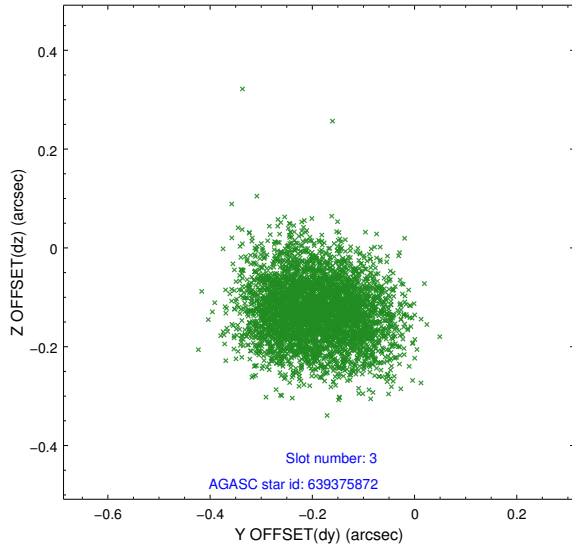


Slot Statistics

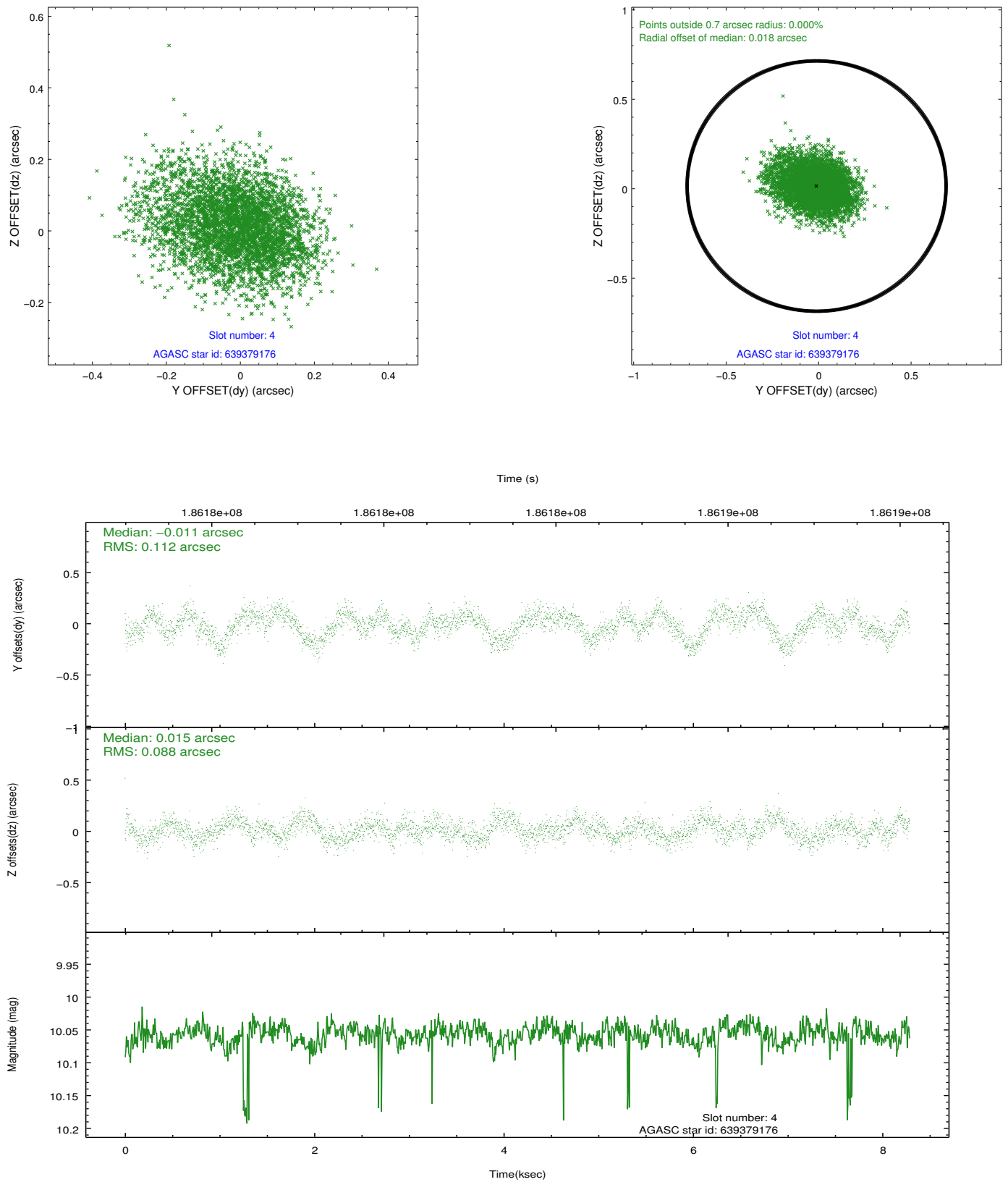
slot	status	id	mag	n_pts	med_dy	med_dz	dr1	dr2	ra	dec	mean_y	mean_z
0	FID	ACIS-S-2	7.10	2022	-0.051	-0.019	0.008	0.014	0.000000	0.000000	-759.57	-1732.46
1	FID	ACIS-S-4	7.20	2022	0.067	0.030	0.007	0.014	0.000000	0.000000	2153.50	175.40
2	FID	ACIS-S-5	7.23	2022	-0.047	-0.002	0.007	0.012	0.000000	0.000000	-1811.56	169.77
3	GUIDE	639375872	9.53	4043	-0.195	-0.131	0.103	0.164	136.186080	-1.129152	2115.15	978.11
4	GUIDE	639379176	10.06	4032	-0.011	0.015	0.153	0.248	136.460819	-1.622125	836.09	-599.37
5	GUIDE	639380424	9.84	4040	0.106	0.083	0.125	0.210	136.629376	-1.763853	587.70	-1352.42
6	GUIDE	639894552	8.43	4044	0.141	-0.013	0.081	0.125	136.199140	-2.208210	-1472.90	-510.53
7	GUIDE	639895096	7.41	4043	-0.038	0.045	0.079	0.119	136.624219	-2.599659	-2213.24	-2453.61

2.4 Star Slots

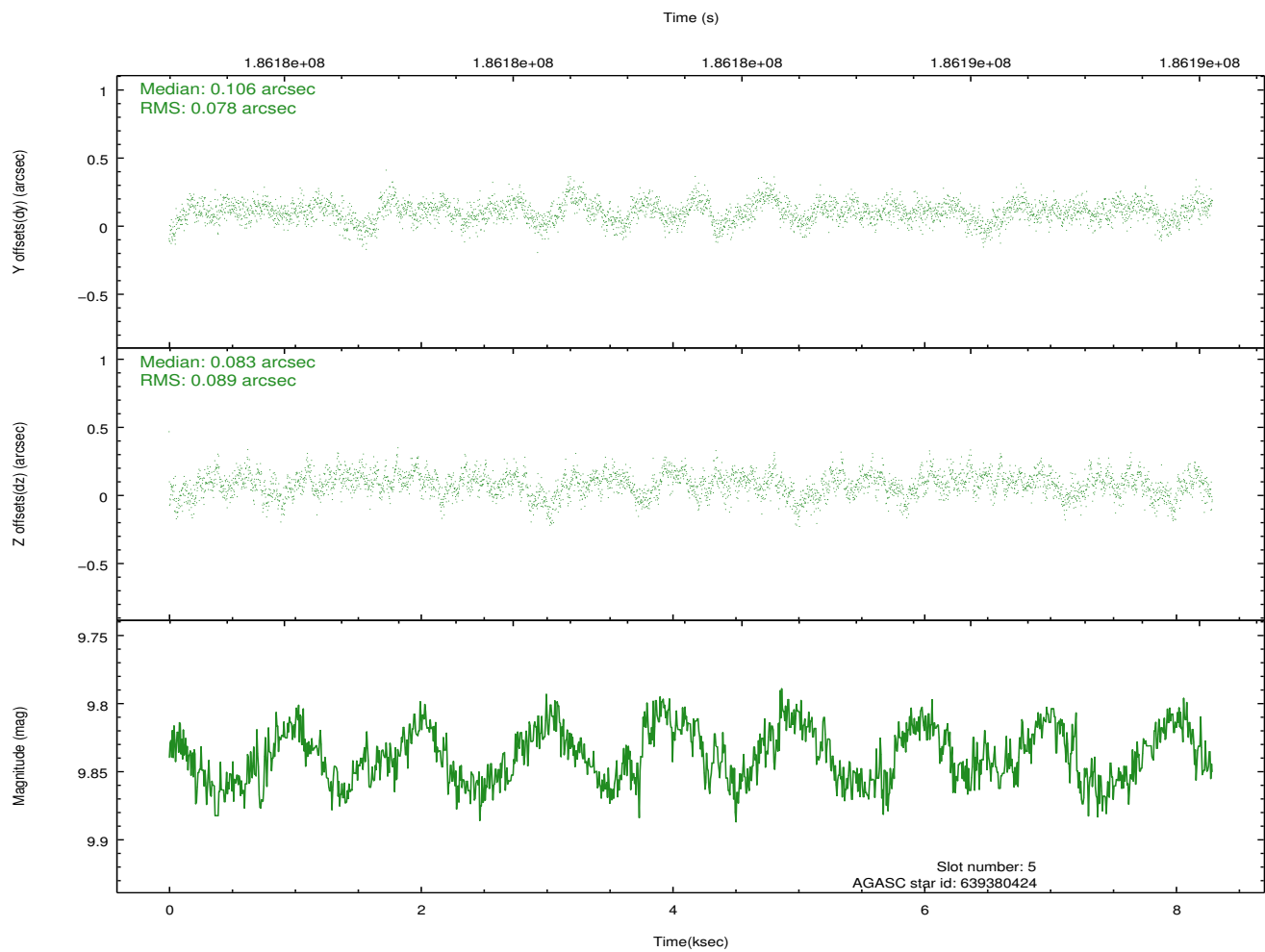
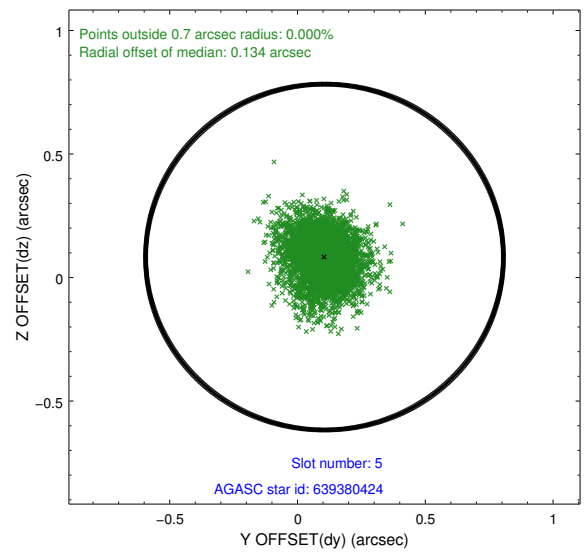
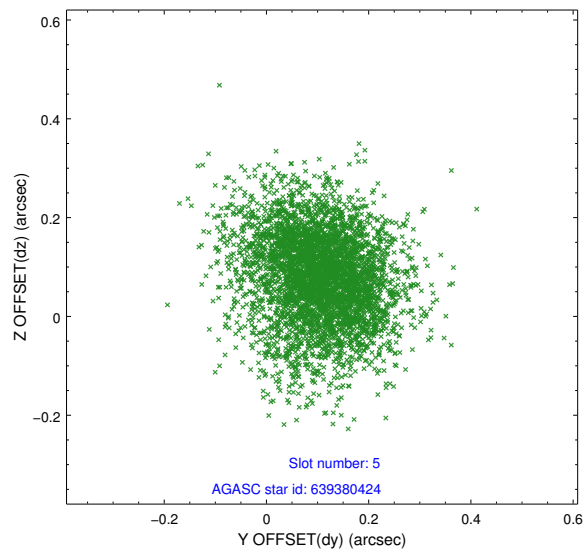
2.4.1 Slot 3



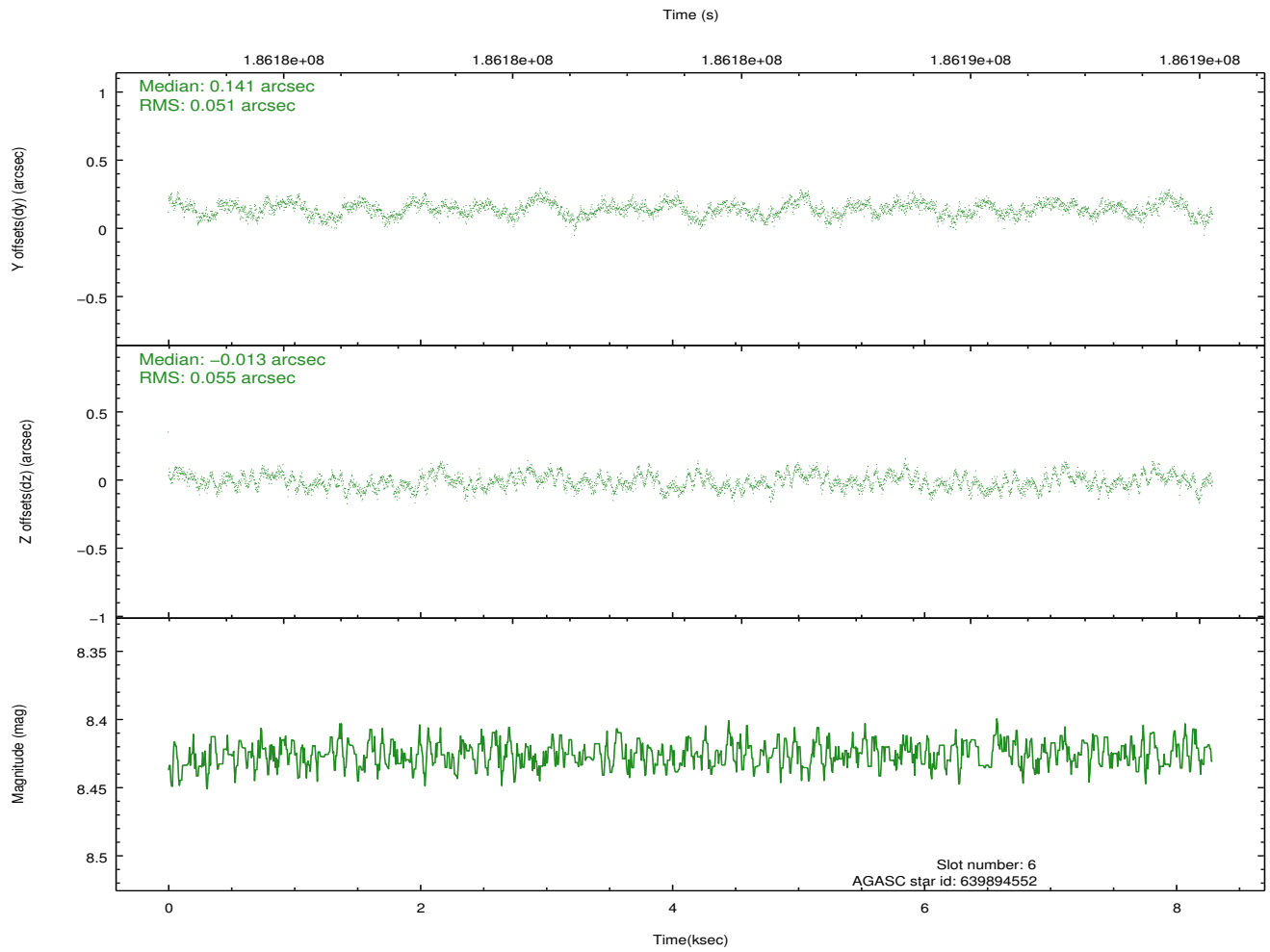
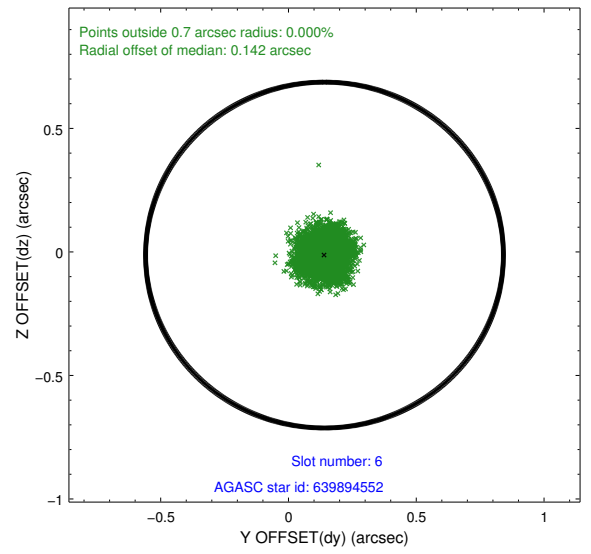
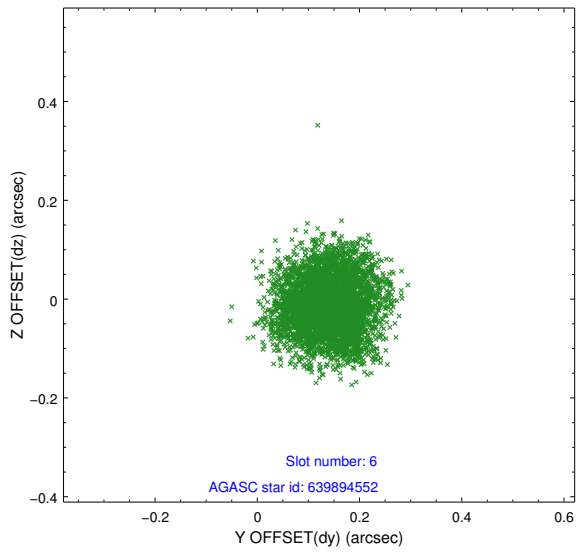
2.4.2 Slot 4



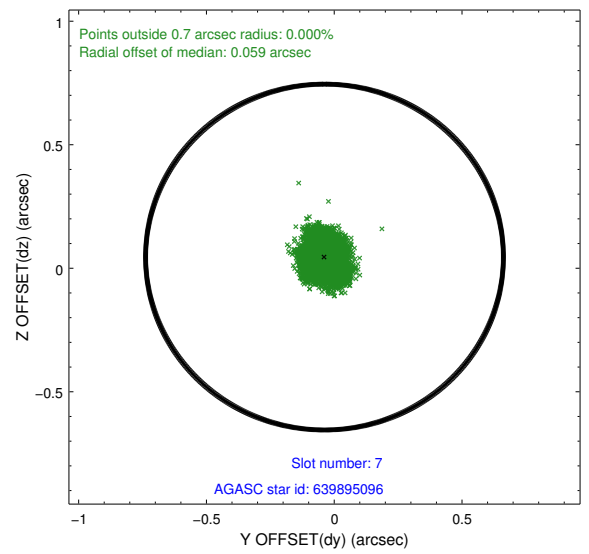
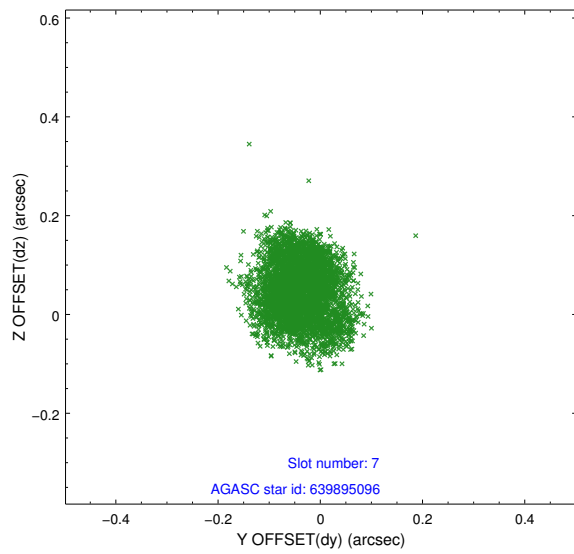
2.4.3 Slot 5



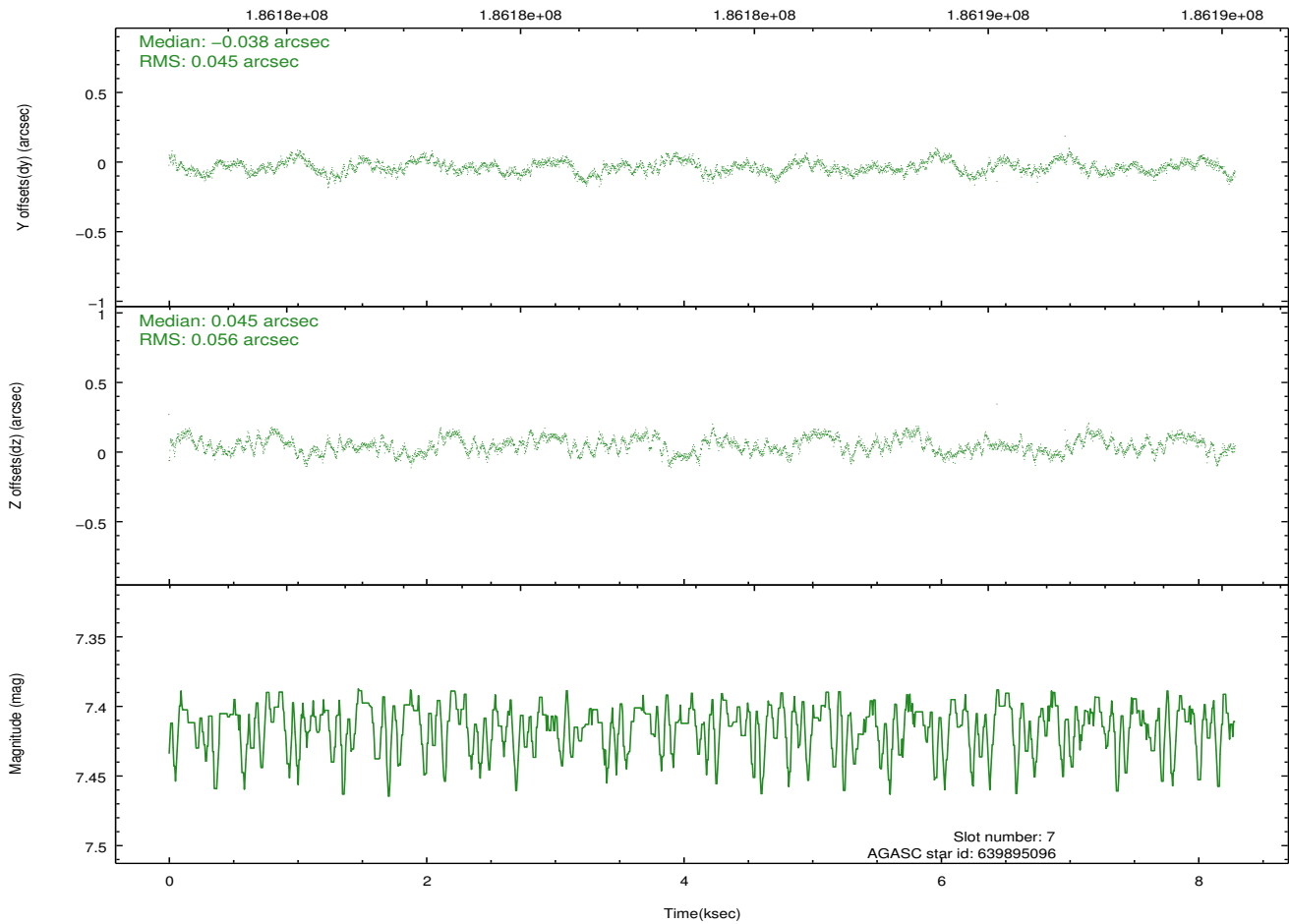
2.4.4 Slot 6



2.4.5 Slot 7

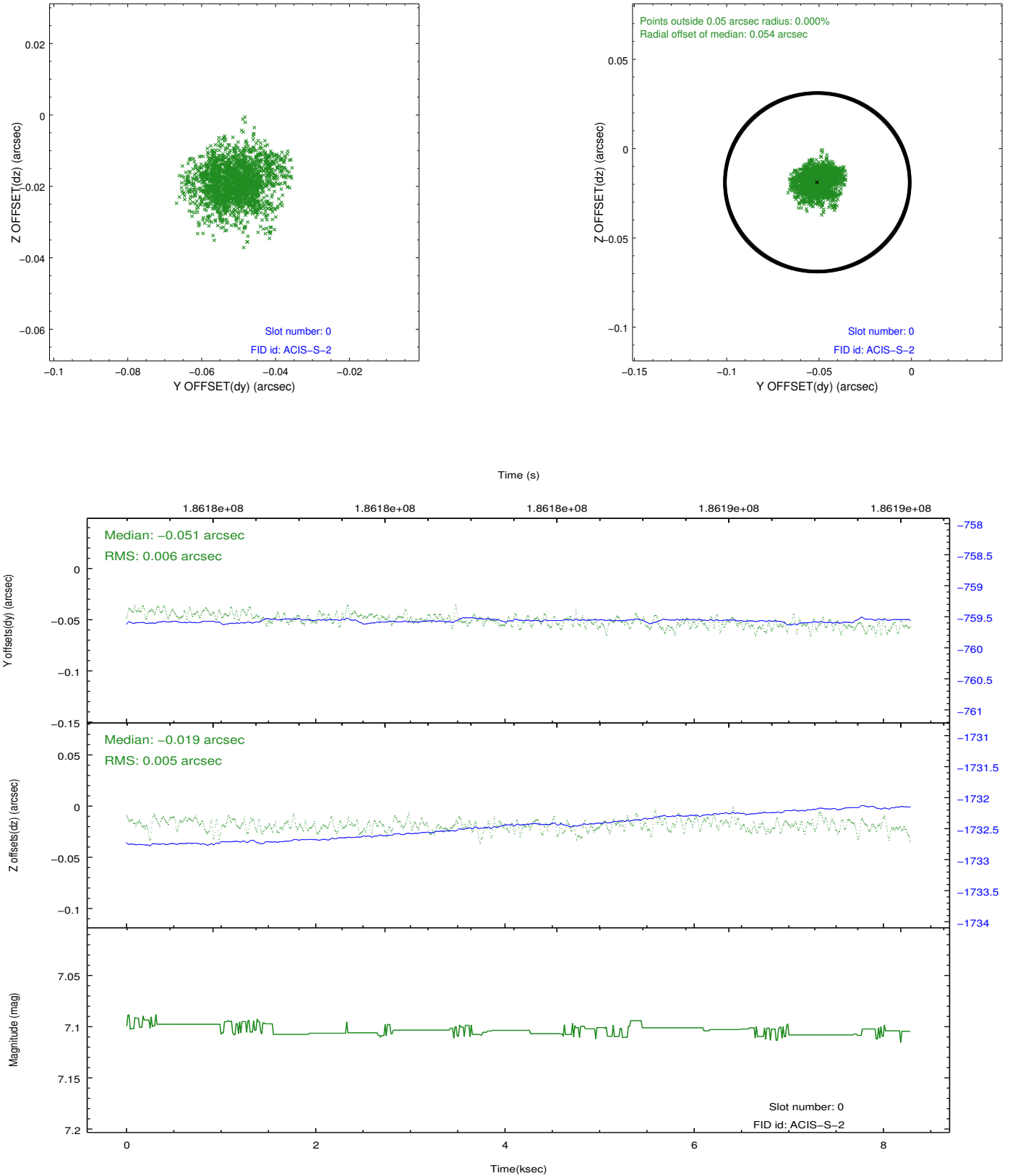


Time (s)

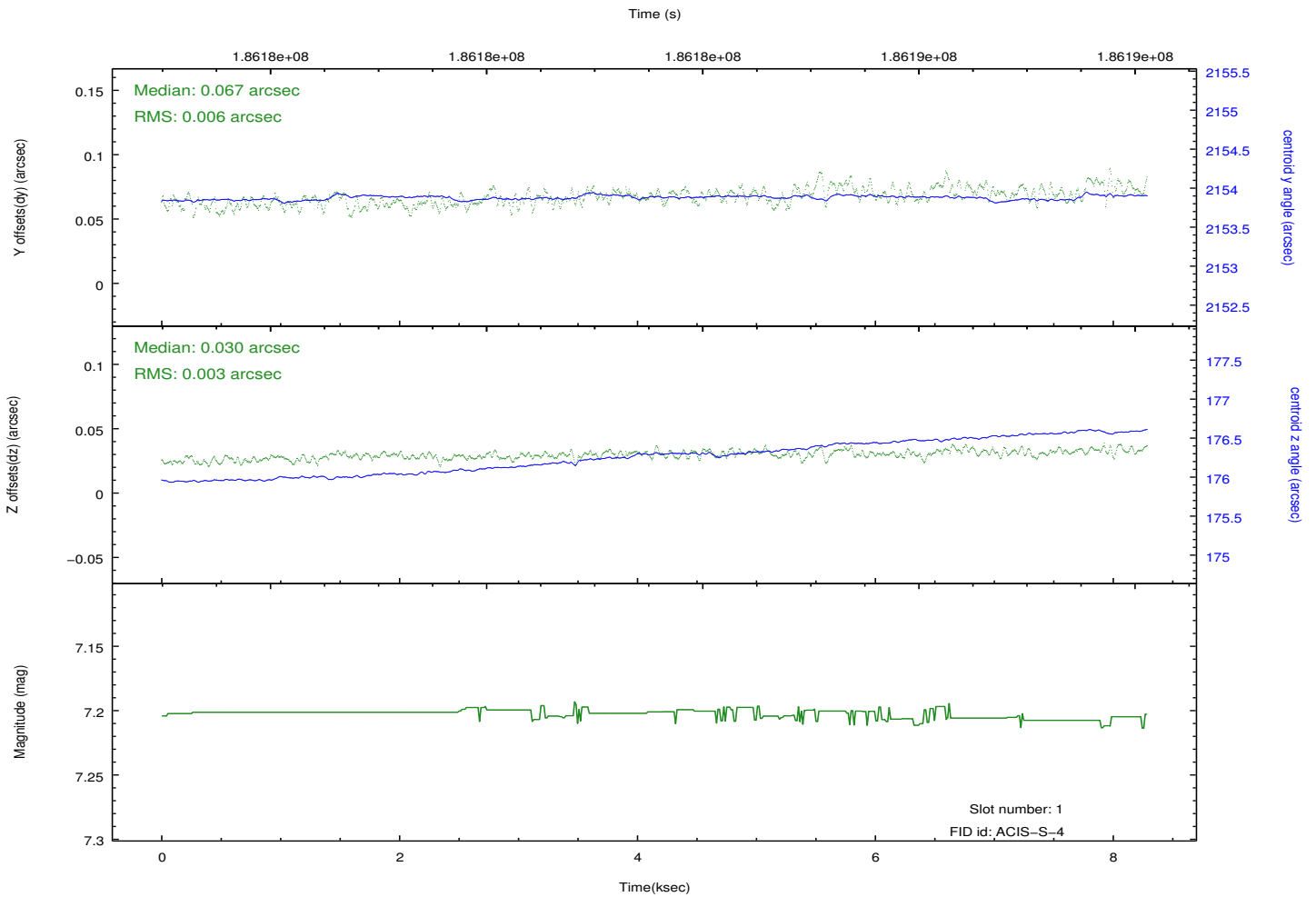
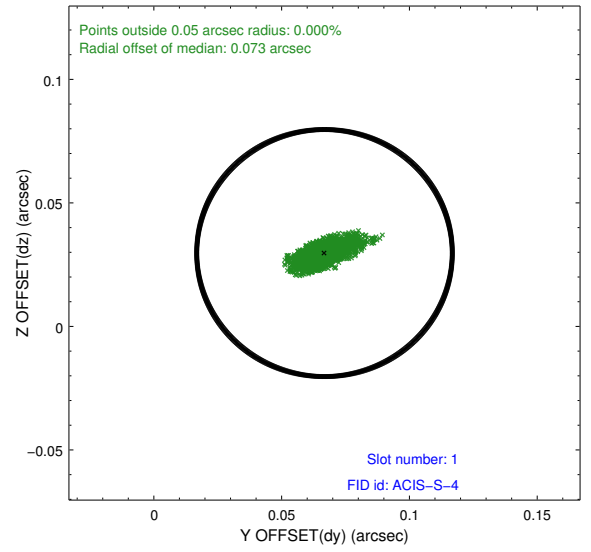
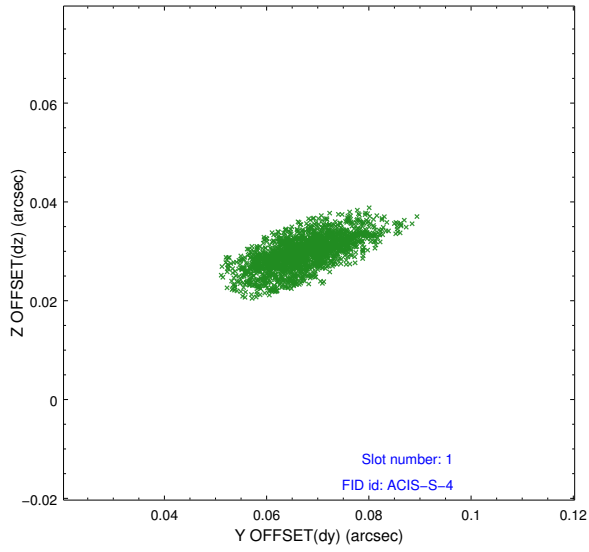


2.5 FID Slots

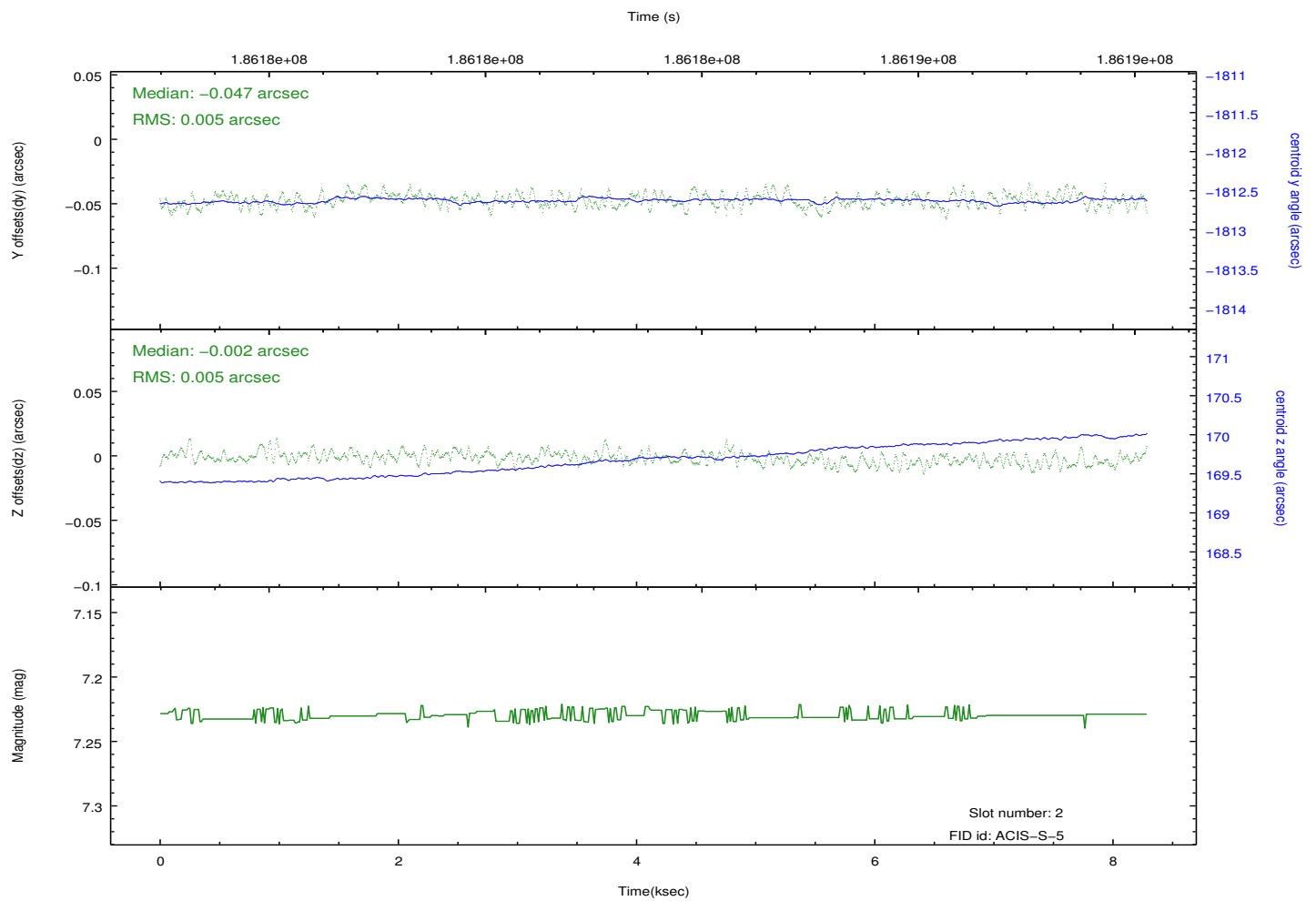
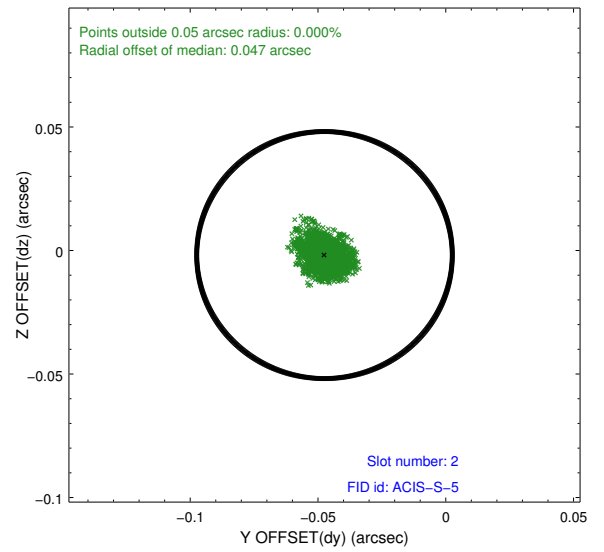
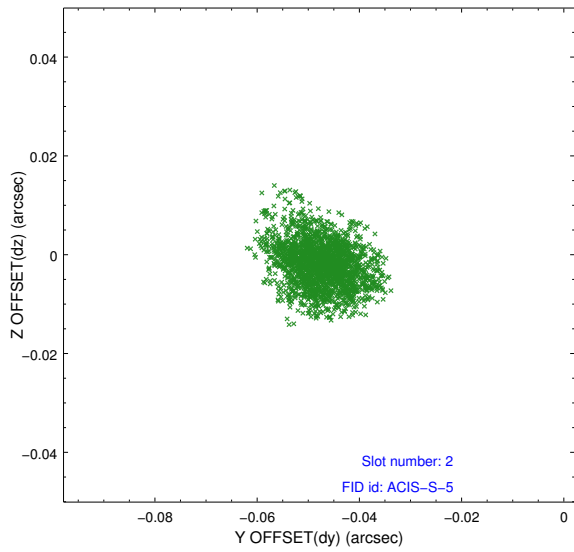
2.5.1 Slot 0



2.5.2 Slot 1



2.5.3 Slot 2



A Summary

A.1 Status

V&V Scientist	Jen Lauer
V&V Date (YYYY-MM-DD)	2012.12.02
V&V Edition	1
V&V Disposition and Status	OK
V&V Charge Time	8.286

A.2 Comments