

V&V Reference Report

L2 ASCDS Version : 8.4.5

Observation 4994 - L2 Version 3
Chandra X-Ray Center

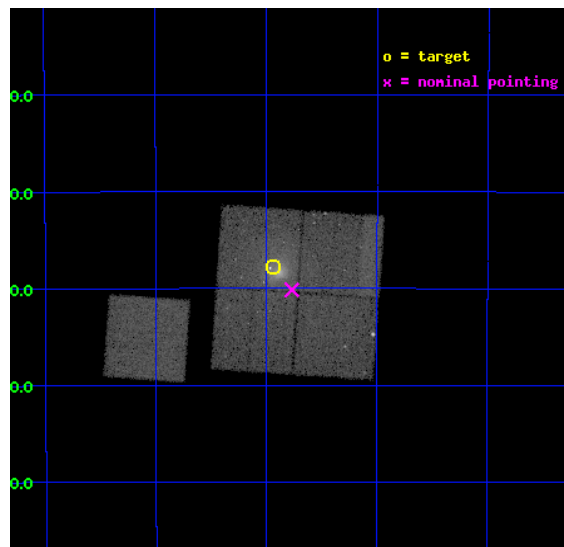
L2 Processing Date : Nov 12 2012

Contents

1	Front	2
2	OBI	3
2.1	OBI	3
2.1.1	Images	3
2.1.2	Bias	3
2.1.3	Parameters	4
2.1.4	Events	4
2.2	Compared Parameters	5
2.3	Aspect	6
2.4	Star Slots	9
2.4.1	Slot 3	9
2.4.2	Slot 4	10
2.4.3	Slot 5	11
2.4.4	Slot 6	12
2.4.5	Slot 7	13
2.5	FID Slots	14
2.5.1	Slot 0	14
2.5.2	Slot 1	15
2.5.3	Slot 2	16
A	Summary	17
A.1	Status	17
A.2	Comments	17

1 Front

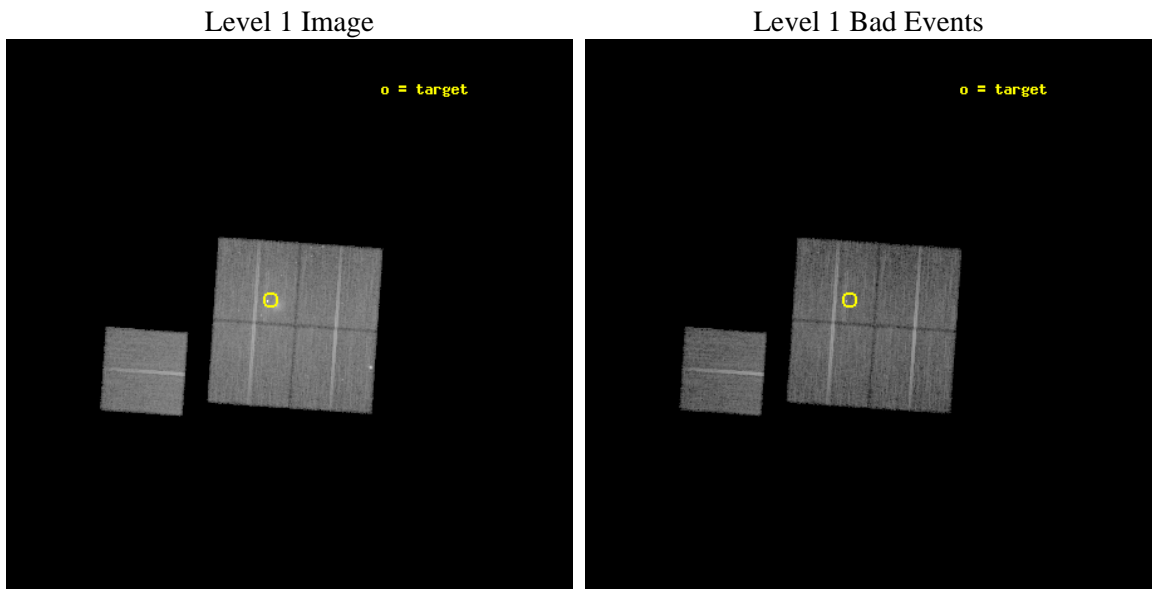
seq_num	800437	Sequence number
obs_id	4994	Observation id
title	Studying the effect of merging clusters in cosmological cluster samples	Proposal title
observer	Dr. Hans Boehringer	Principal investigator
object	RXCJ0528.9-3927	Source name
dtcycle	0	
cycle	P	events from which exps? Prim/Second/Both
ra_targ	82.234583	Observer's specified target RA [deg]
dec_targ	-39.462778	Observer's specified target Dec [deg]
ra_nom	82.192409253402	Nominal RA [deg]
dec_nom	-39.502651730805	Nominal Dec [deg]
roll_nom	273.98076636036	Nominal Roll [deg]
revision	3	Processing version of data
ontime	22750.54347223	Sum of GTIs [s]
livetime	22453.290873059	Livetime [s]
ontime0	22750.420362175	Sum of GTIs [s]
ontime1	22750.461402178	Sum of GTIs [s]
ontime2	22744.220481783	Sum of GTIs [s]
ontime3	22750.54347223	Sum of GTIs [s]
ontime6	22750.379312187	Sum of GTIs [s]
l2events	136707	Number of level 2 events



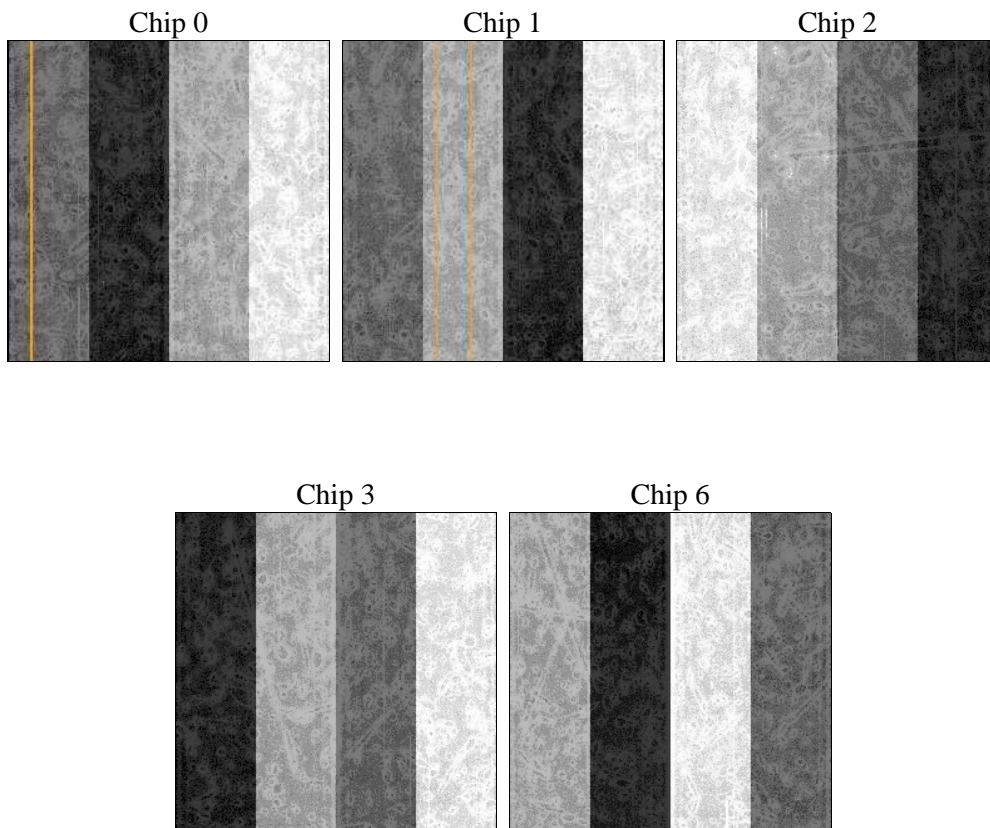
2 OBI

2.1 OBI

2.1.1 Images



2.1.2 Bias



2.1.3 Parameters

obi_num	0	Obi number	sched_exp_time	22636.141000	[s] Scheduled observation exposure time
ascdsver	8.4.5	Processing system revision	ontime	22750.54347223	Sum of GTIs [s]
caldsver	4.5.2	 	ontime0	22750.420362175	Sum of GTIs [s]
date	2012-11-12T17:47:22	Date and time of file creation	ontime1	22750.461402178	Sum of GTIs [s]
revision	3	Processing version of data	ontime2	22744.220481783	Sum of GTIs [s]
			ontime3	22750.54347223	Sum of GTIs [s]
			ontime6	22750.379312187	Sum of GTIs [s]
			l1events	708180	Number of level 1 events

2.1.4 Events

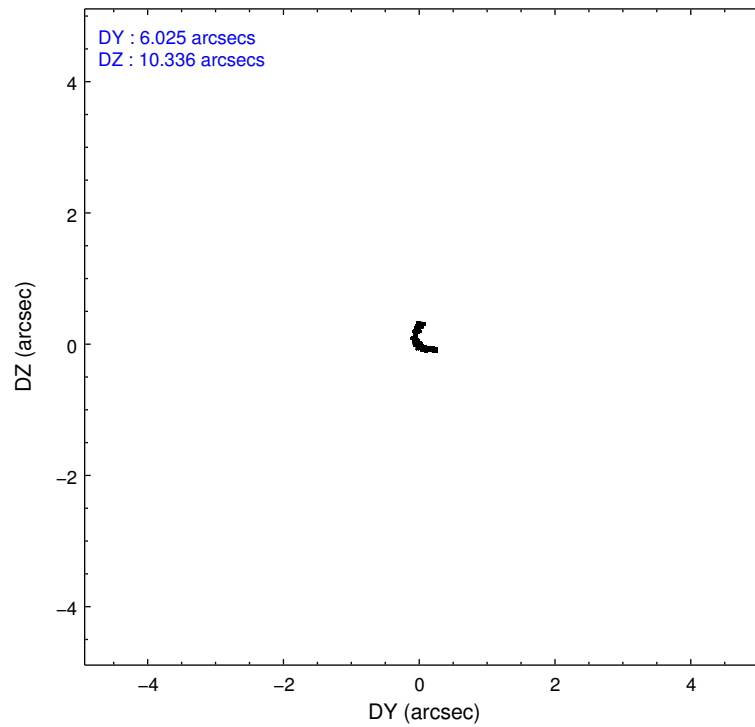
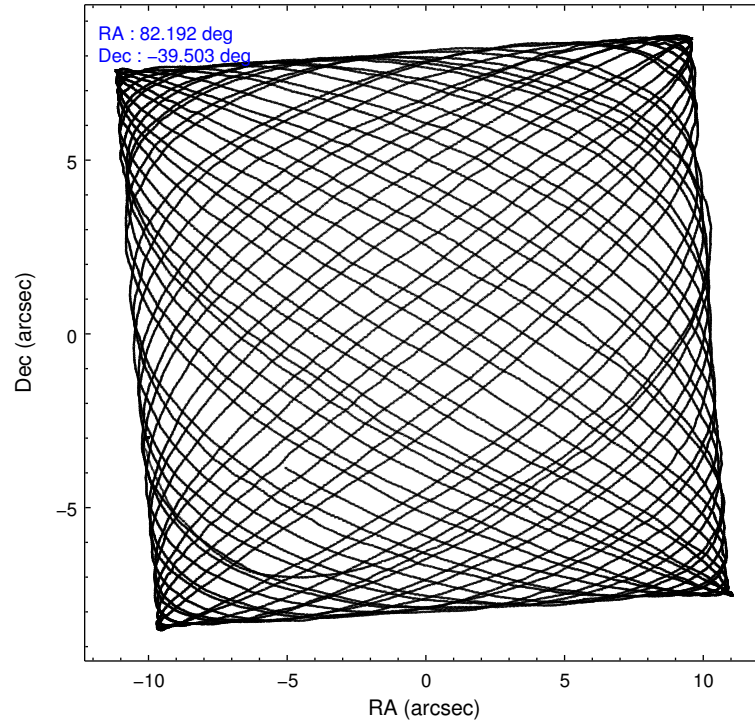
	ccd 0	ccd 1	ccd 2	ccd 3	ccd 6
level 1 events	134645	132205	142096	159734	139500
rejected events	108586	102883	117361	115696	111830
rejected %	80%	77%	82%	72%	80%

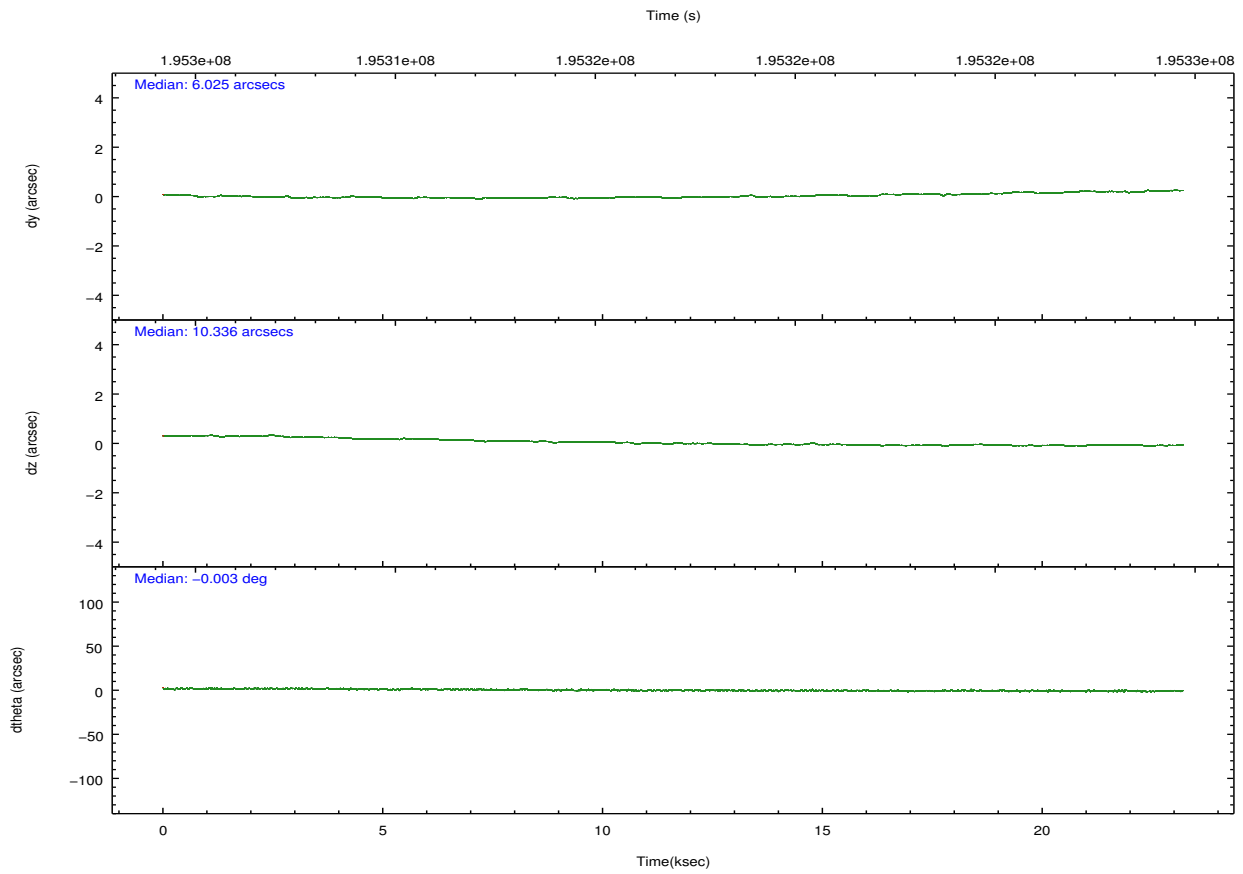
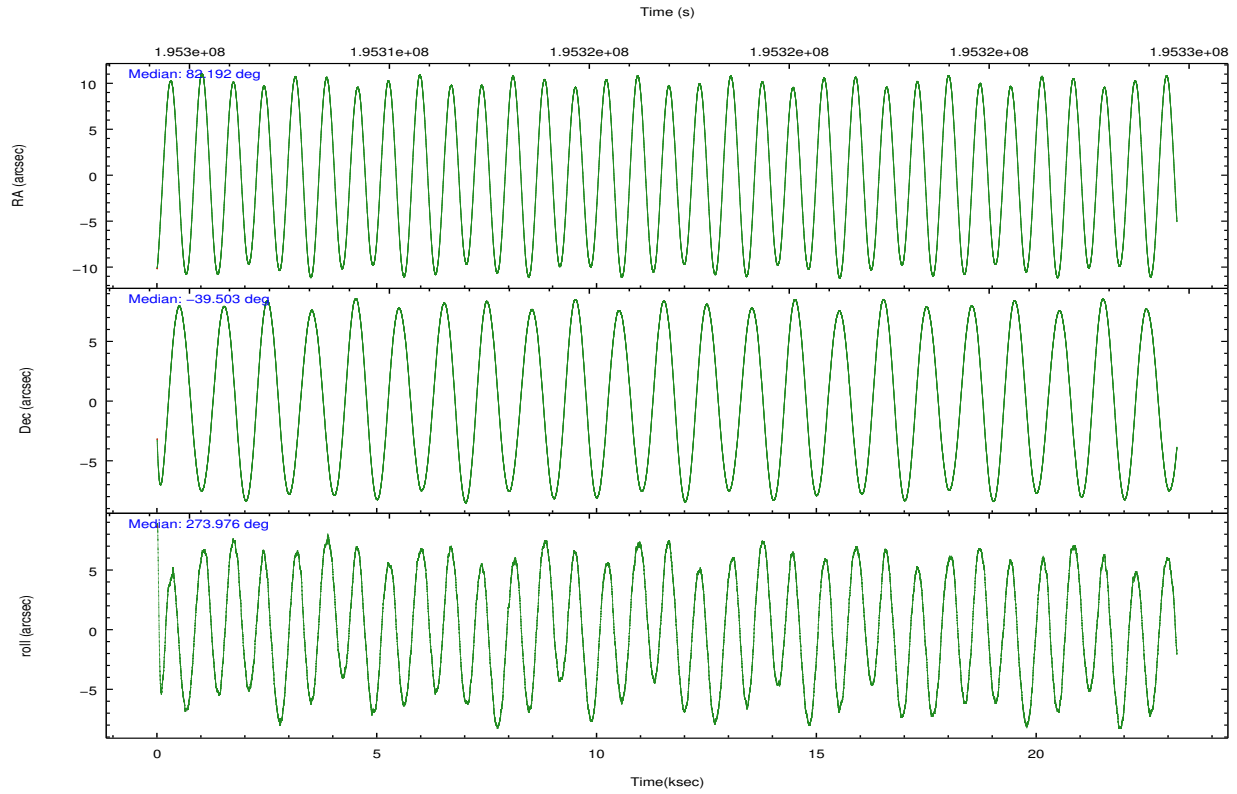
	ccd 0	ccd 1	ccd 2	ccd 3	ccd 6
grade 0 events	13823	15842	13091	28770	14919
	10%	11%	9%	18%	10%
grade 1 events	107	101	118	552	94
	0%	0%	0%	0%	0%
grade 2 events	4524	4983	4255	6108	4432
	3%	3%	2%	3%	3%
grade 3 events	2047	2264	1929	2582	2059
	1%	1%	1%	1%	1%
grade 4 events	1891	2076	1998	2521	2014
	1%	1%	1%	1%	1%
grade 5 events	4517	4881	4351	5147	5105
	3%	3%	3%	3%	3%
grade 6 events	3792	4175	3484	4075	4267
	2%	3%	2%	2%	3%
grade 7 events	103944	97883	112870	109979	106610
	77%	74%	79%	68%	76%

2.2 Compared Parameters

Parameter	Planned	Actual	Parameter	Planned	Actual
Instrument	ACIS	ACIS	Obspar format version number	7	7
Detector	ACIS-01236	ACIS-01236	Obspar file type	PREDICTED	ACTUAL
Grating	NONE	NONE	Obspar update status	NONE	UPDATED
Data mode	VFAINT	VFAINT	Number of optional ACIS chips dropped	0	0
Observation mode	POINTING	POINTING	On-chip summing requested	N	N
[deg] Pointing RA	82.172443	82.19240925340182	Subarray requested	NONE	NONE
[deg] Pointing Dec	-39.479971	-39.50265173080503	Alternating exposures requested	N	N
[deg] Pointing Roll	273.759374	273.9807663603584	[s] Primary exposure time	0.000000	3.1
[mm] SIM focus pos	-0.782348	-0.7809083437167272			
[mm] SIM defocus	0	0.001439871863259334			
[mm] SIM translation stage pos	-233.592463	-233.5874344608287			
[mm] SIM translation stage offset	0	-0.005018542100998502			
[s] Observation start time (MET)	195305910.184000	195304758.42271			
Observation start date	2004-03-10T11:37:26	2004-03-10T11:19:18			
[s] Observation end time (MET)	195328546.184000	195328860.27376			
Observation end date	2004-03-10T17:54:42	2004-03-10T18:01:00			
Read mode	TIMED	TIMED			

2.3 Aspect



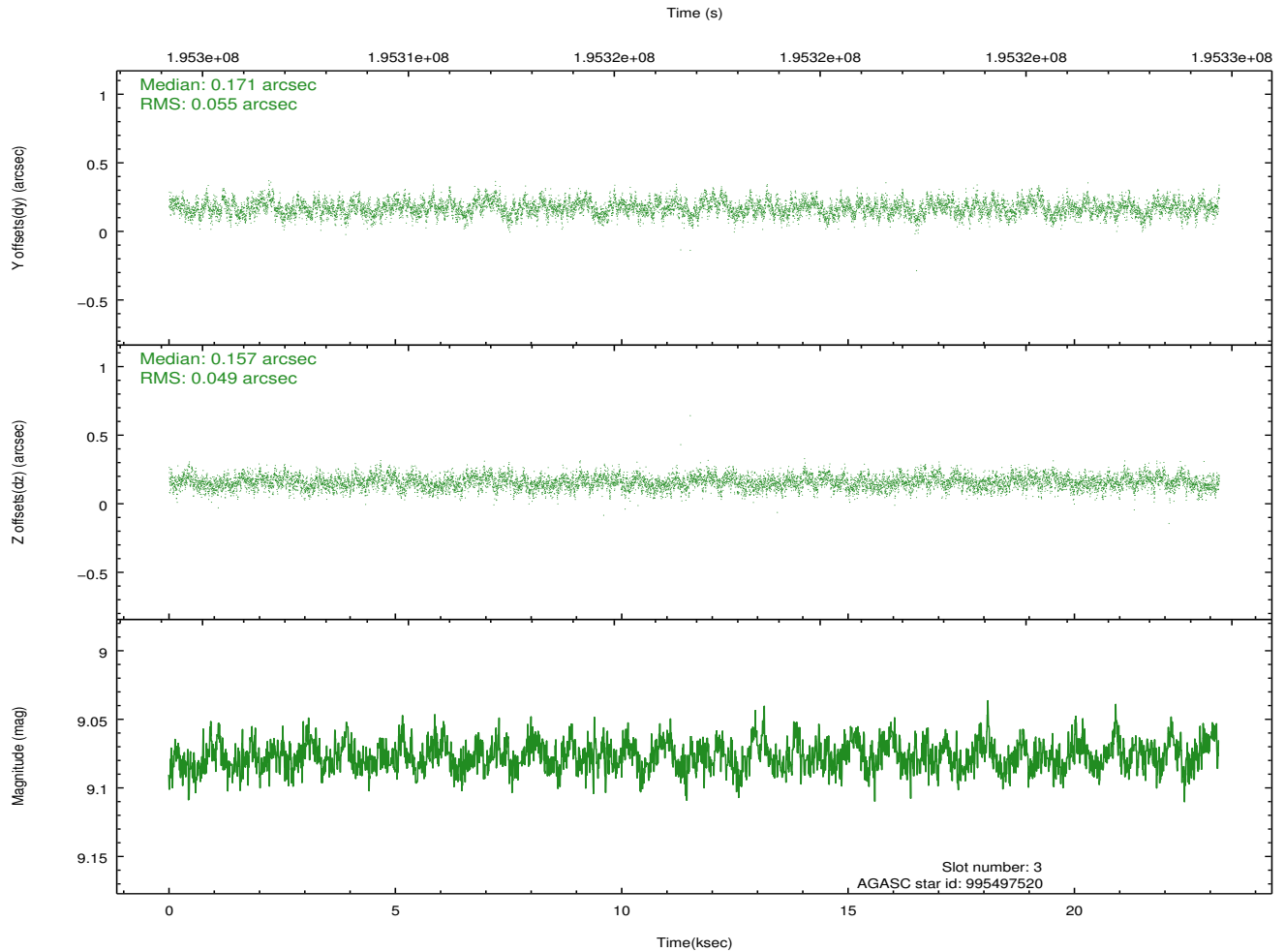
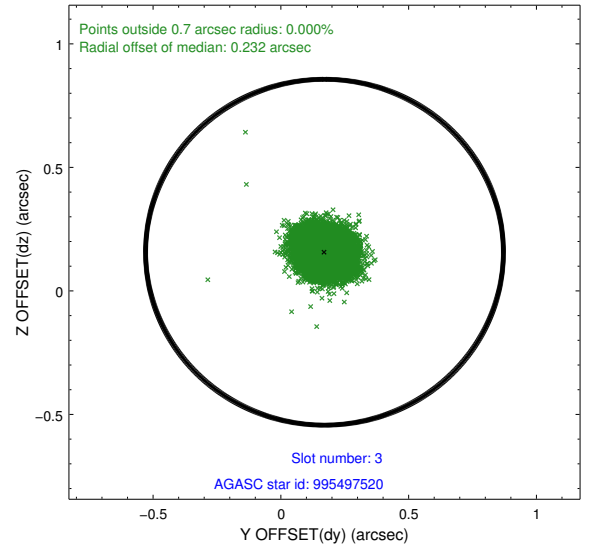
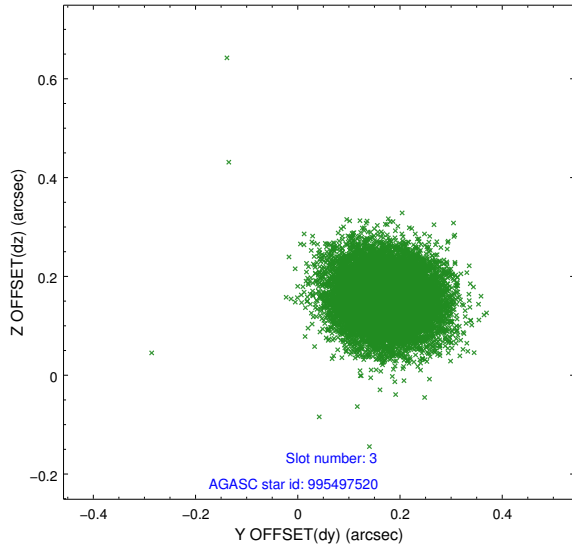


Slot Statistics

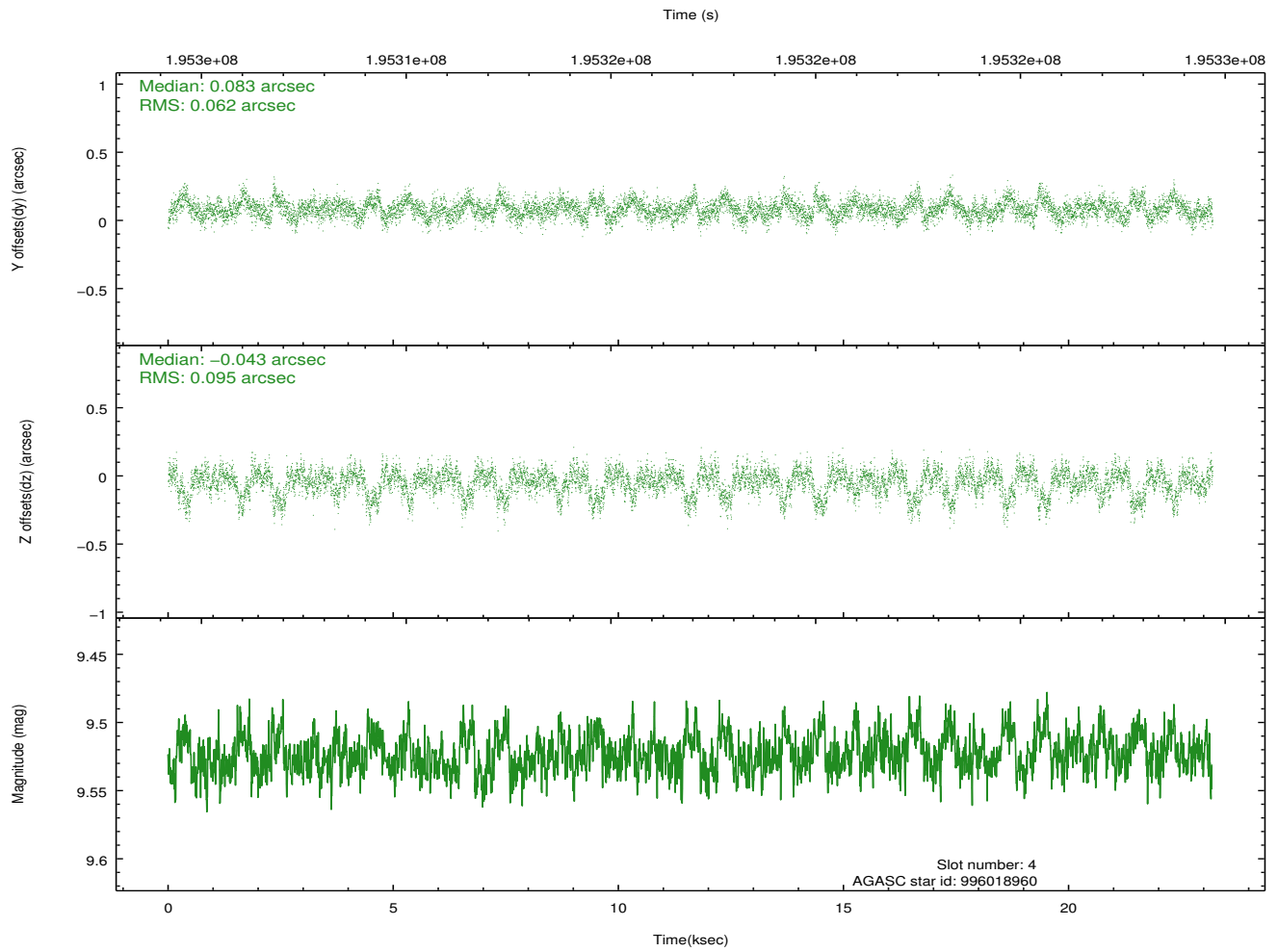
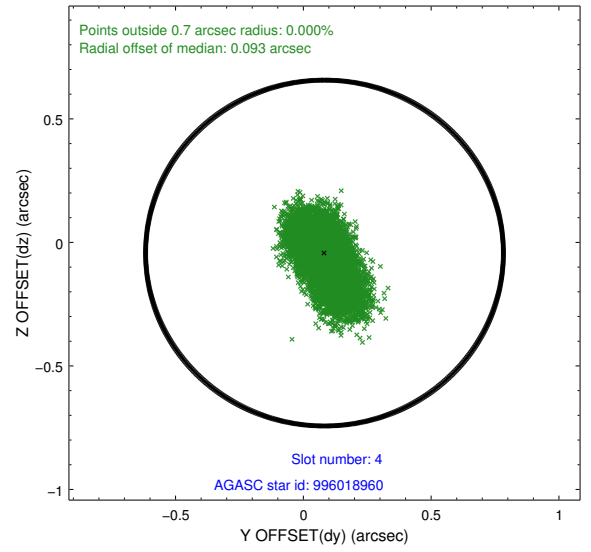
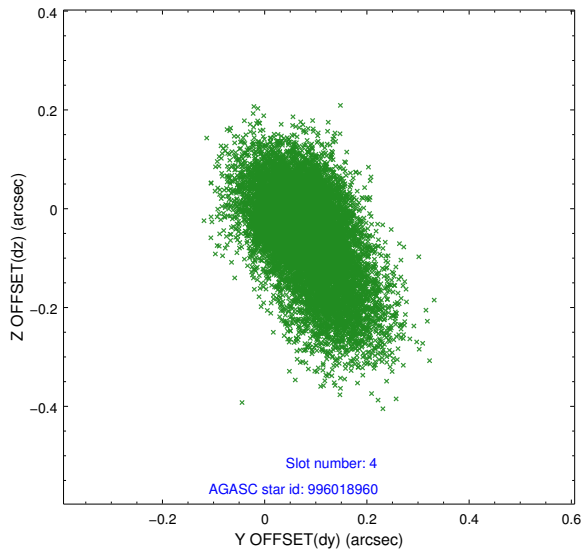
slot	status	id	mag	n_pts	med_dy	med_dz	dr1	dr2	ra	dec	mean_y	mean_z
0	FID	ACIS-I-1	7.24	5656	0.038	-0.021	0.006	0.012	0.000000	0.000000	933.70	-833.88
1	FID	ACIS-I-5	7.23	5655	-0.086	0.076	0.011	0.019	0.000000	0.000000	-1814.48	1063.60
2	FID	ACIS-I-6	7.24	5656	-0.043	0.016	0.011	0.017	0.000000	0.000000	398.98	1708.23
3	GUIDE	995497520	9.08	11305	0.171	0.157	0.078	0.125	82.116967	-39.370982	-401.23	-127.55
4	GUIDE	996018960	9.52	11299	0.083	-0.043	0.113	0.211	81.511270	-39.679524	603.85	-1875.18
5	GUIDE	996147256	9.34	11311	0.126	0.050	0.097	0.155	82.511157	-39.766031	1090.97	867.98
6	GUIDE	995632472	9.29	11307	-0.125	0.040	0.109	0.175	82.864391	-38.800374	-2306.55	2097.18
7	GUIDE	995499784	8.78	11308	-0.256	-0.187	0.081	0.132	81.259517	-38.875649	-2325.83	-2411.38

2.4 Star Slots

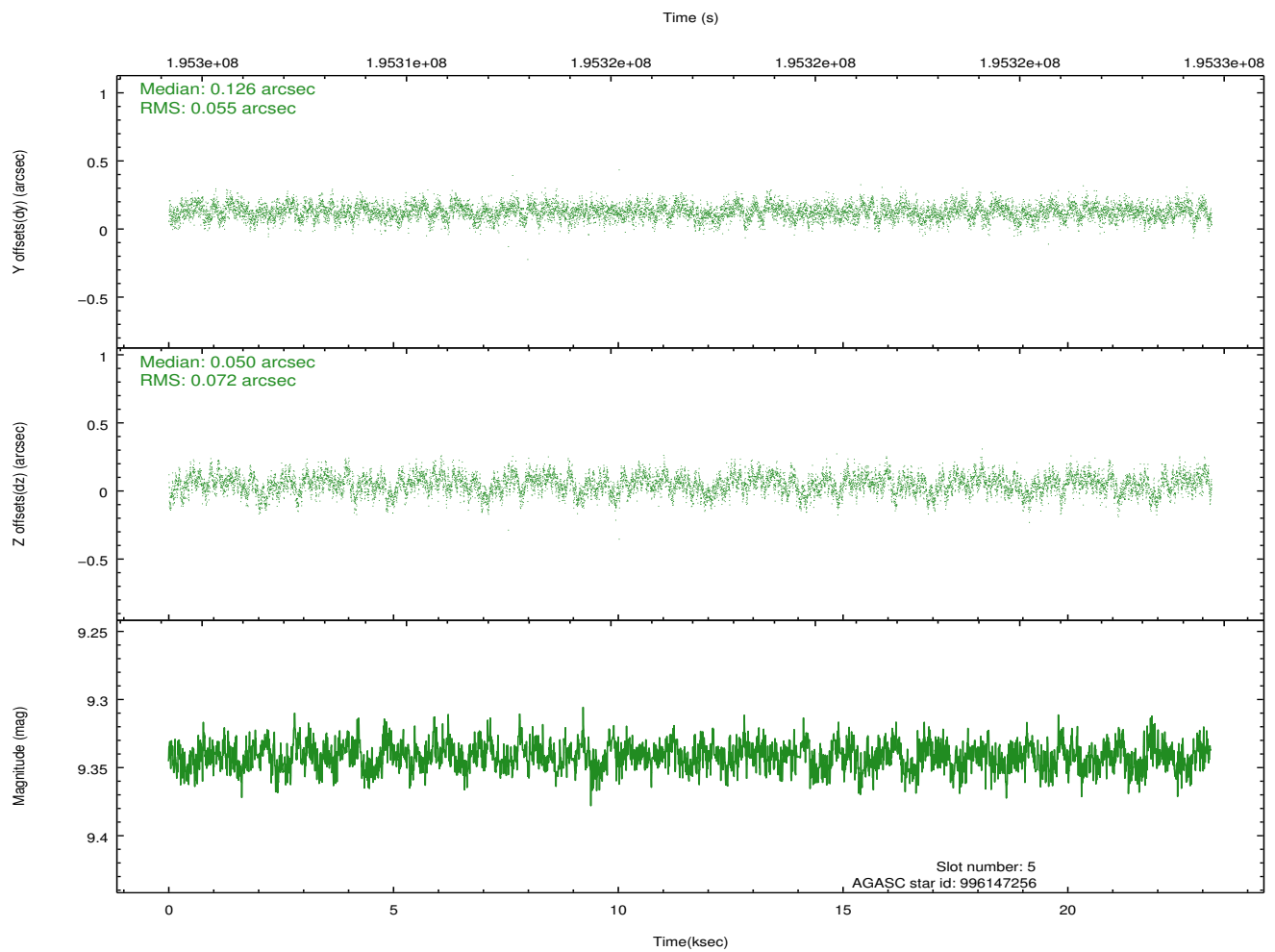
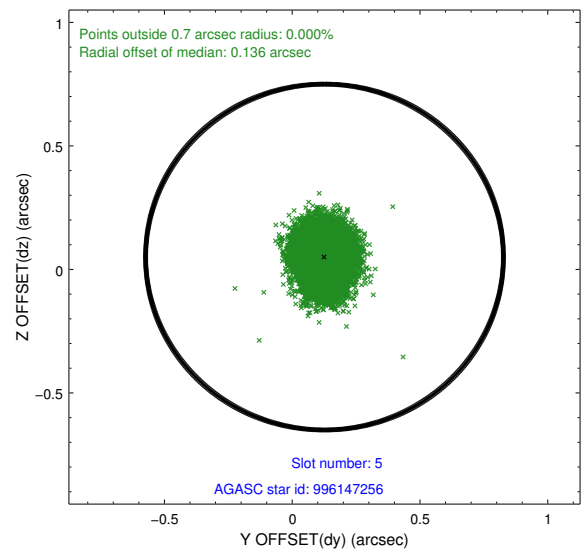
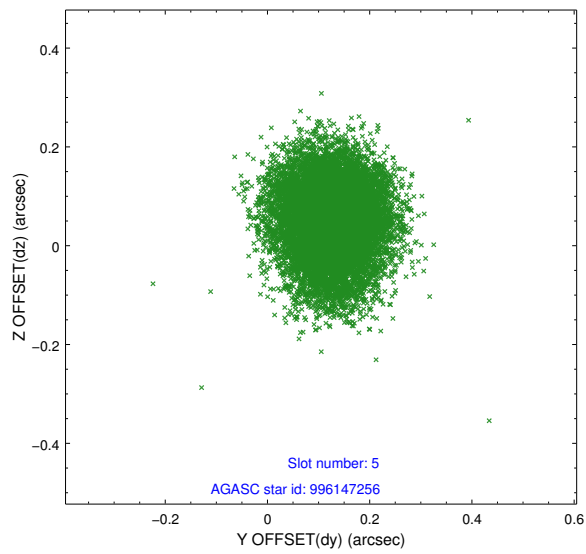
2.4.1 Slot 3



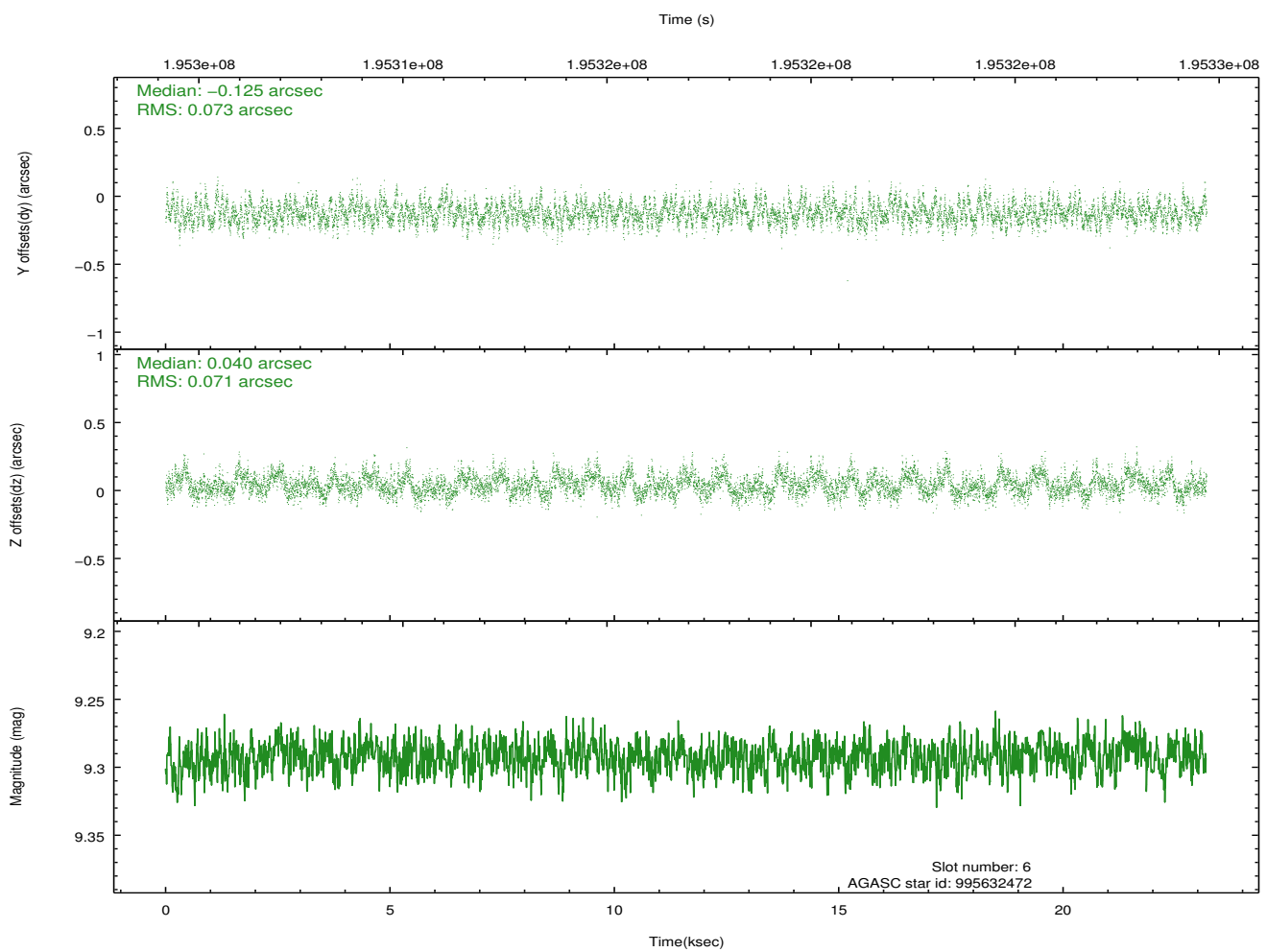
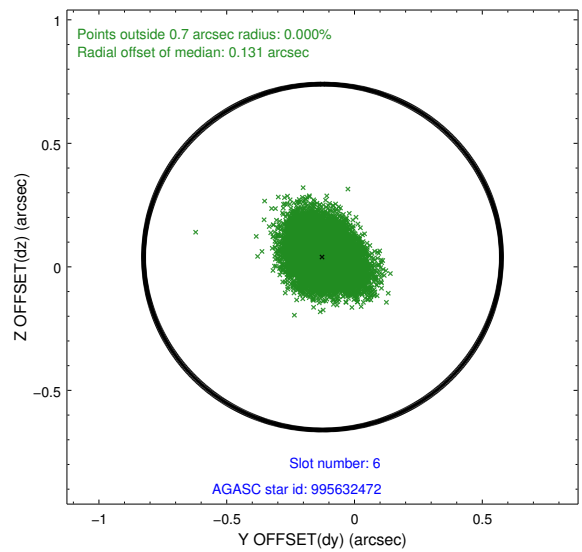
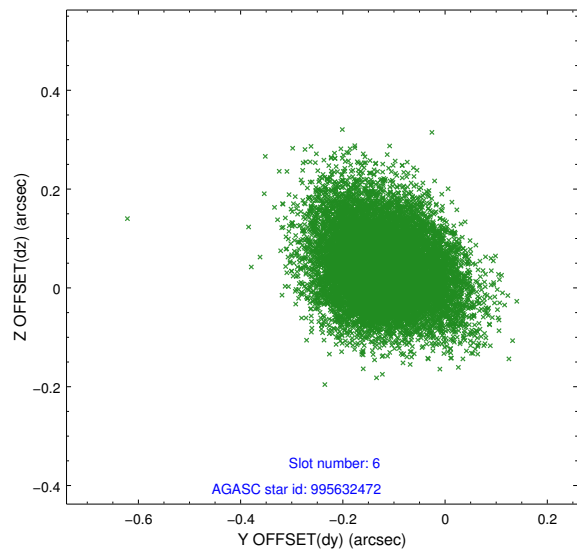
2.4.2 Slot 4



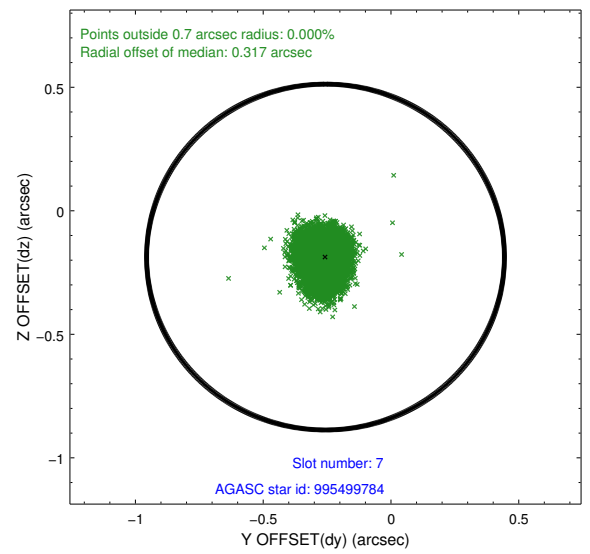
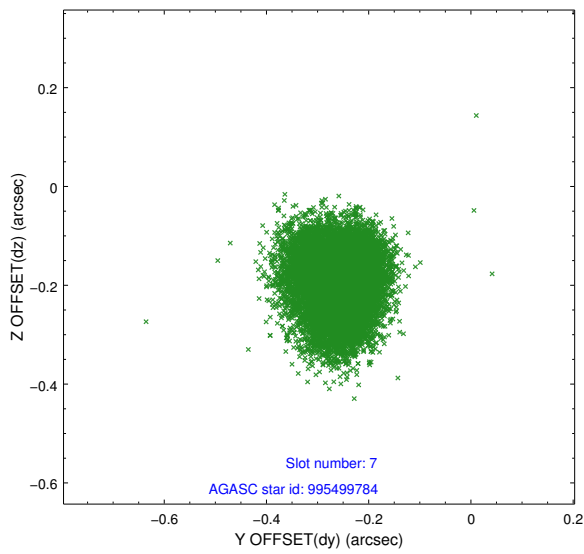
2.4.3 Slot 5



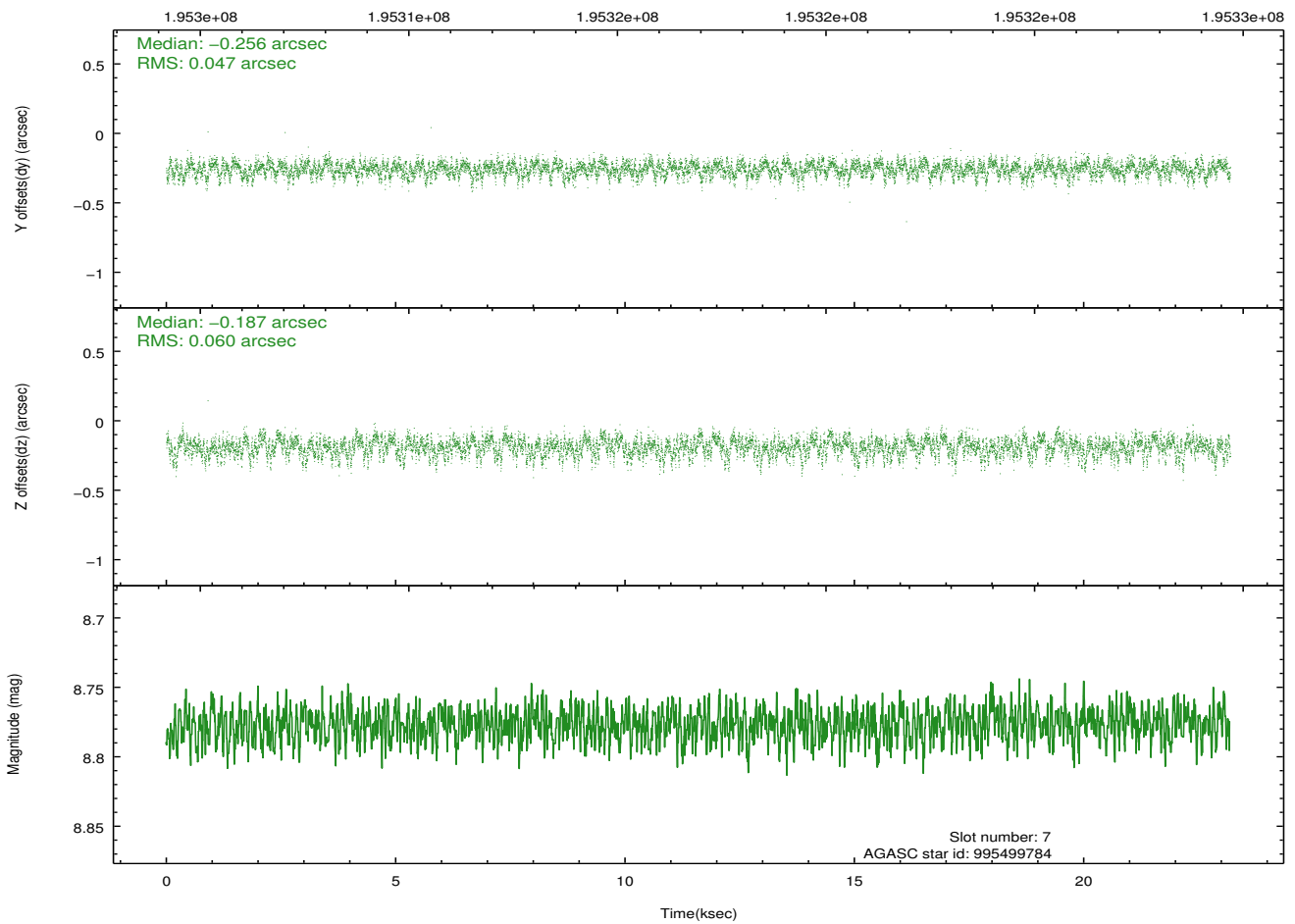
2.4.4 Slot 6



2.4.5 Slot 7

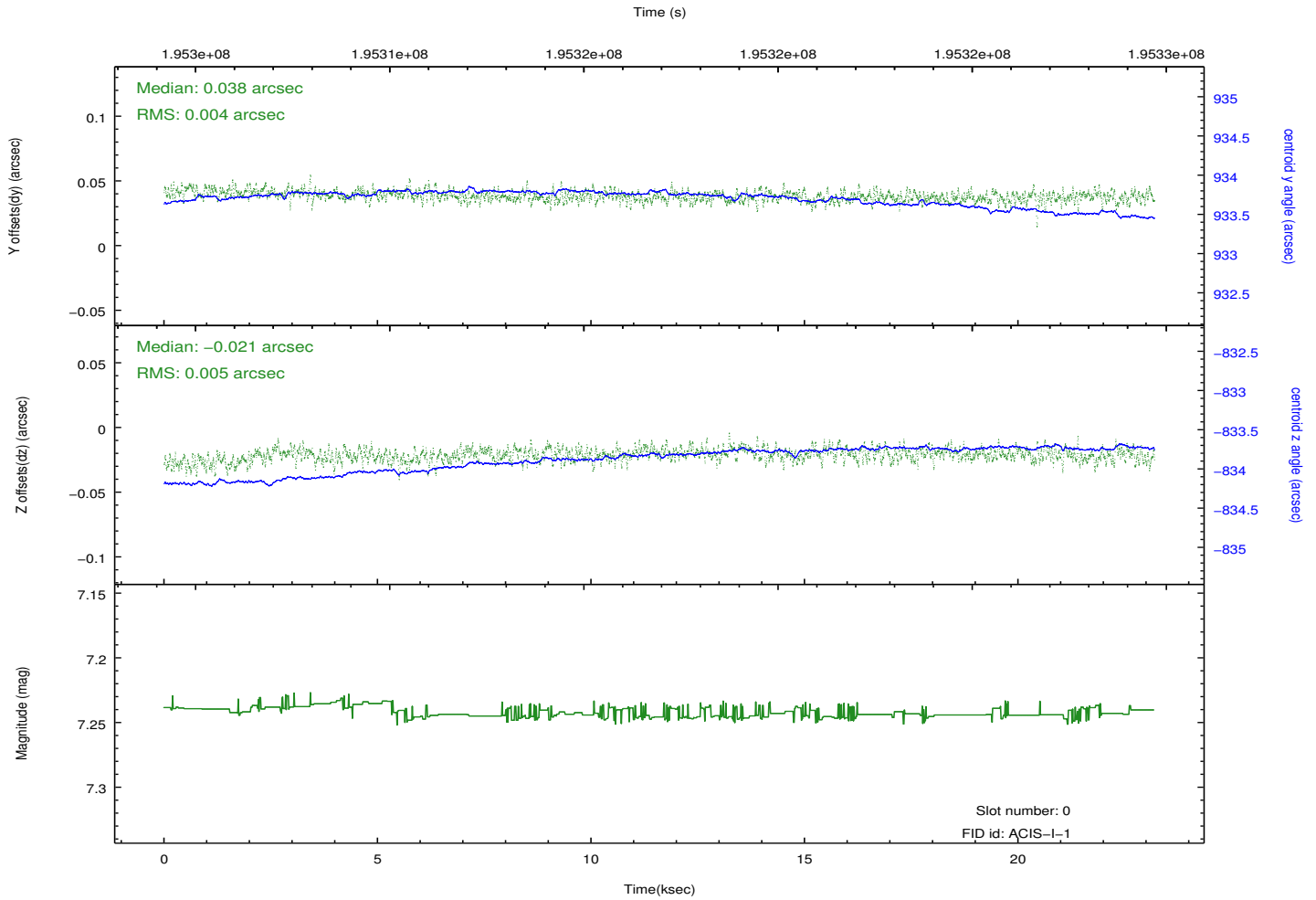
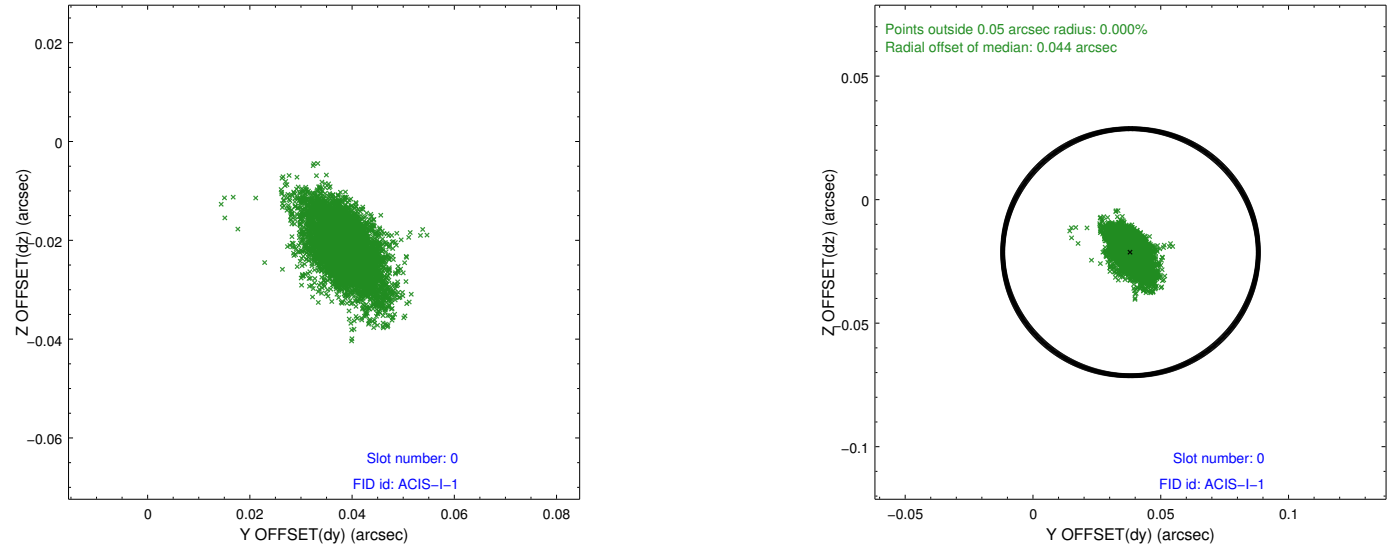


Time (s)

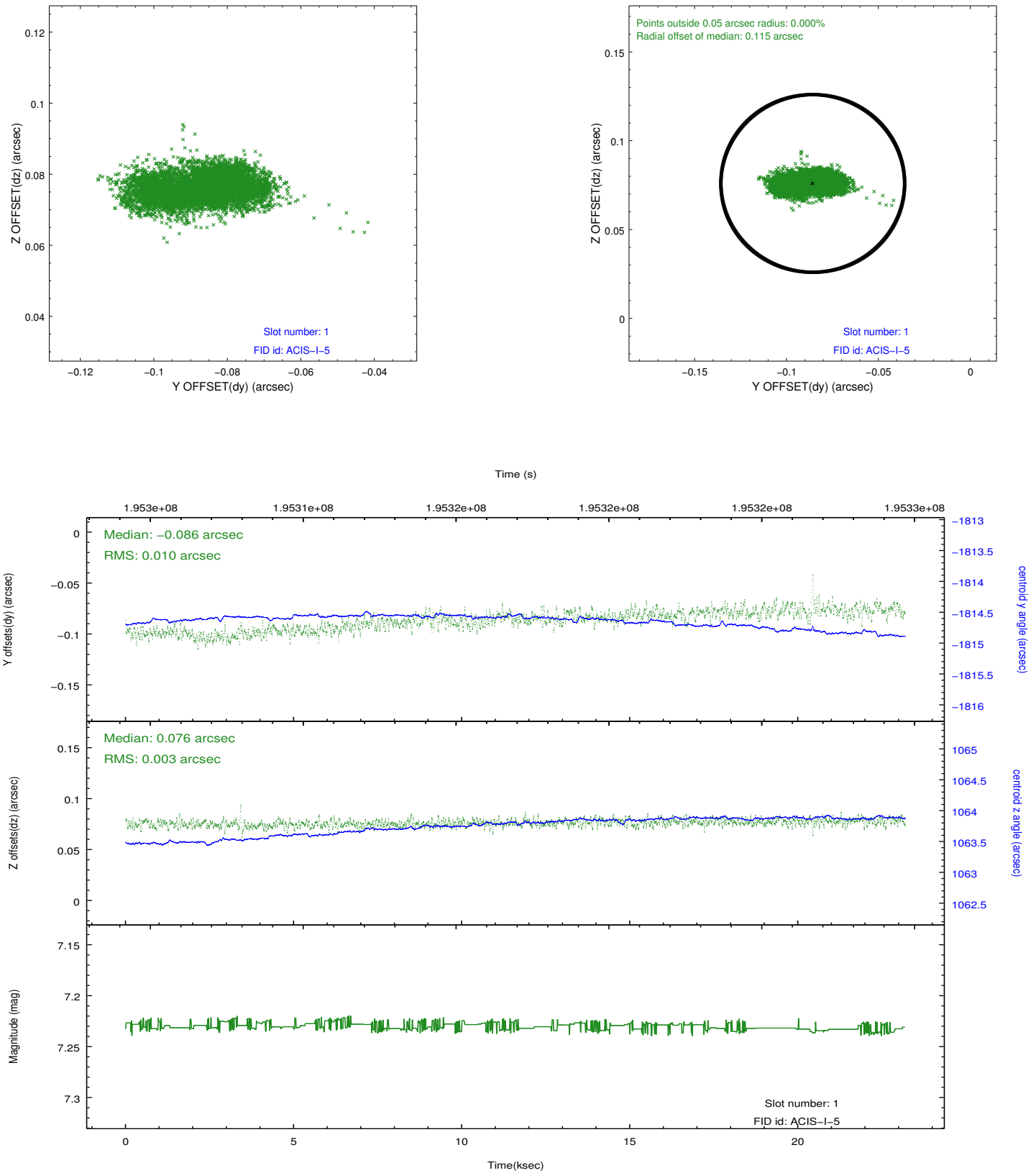


2.5 FID Slots

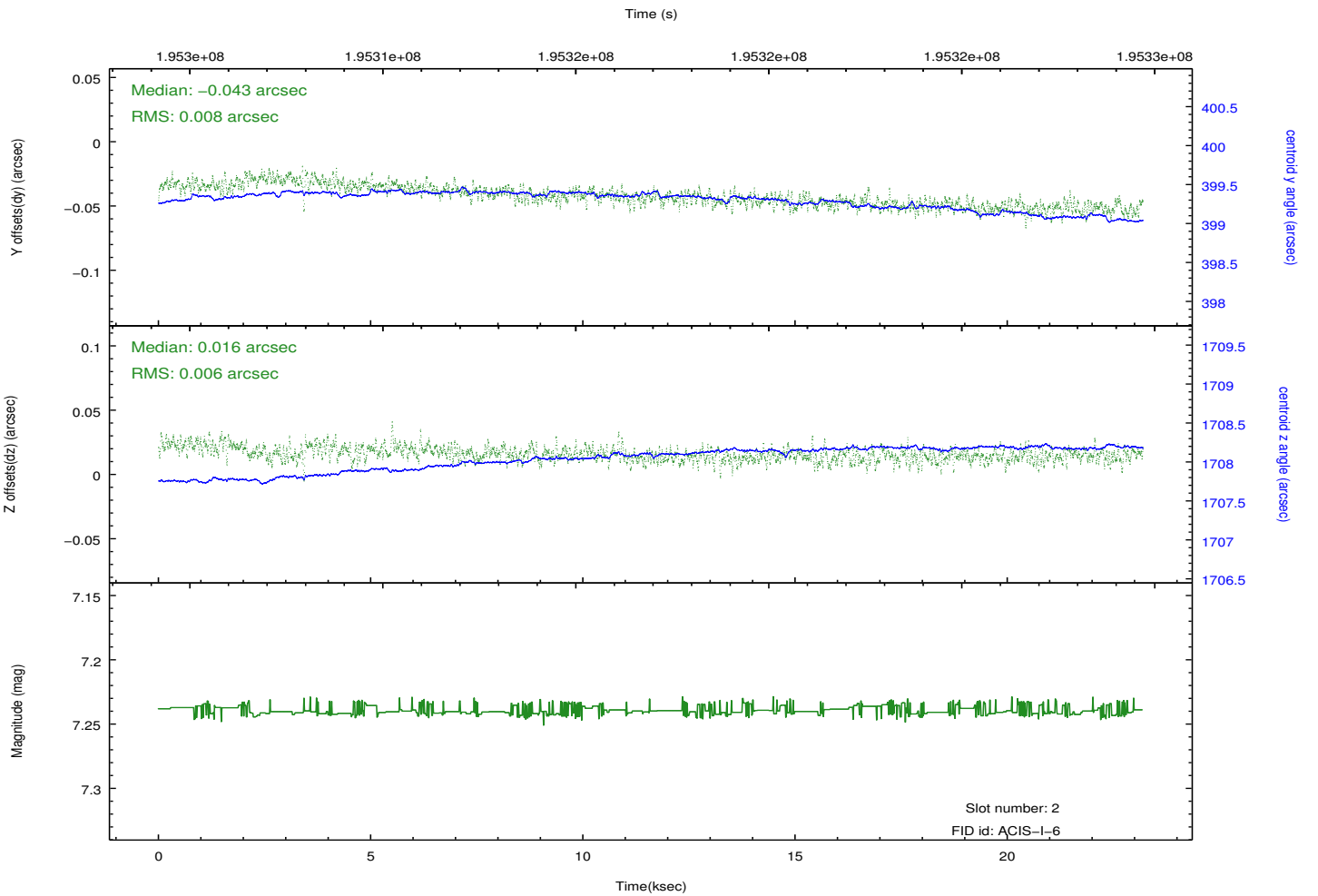
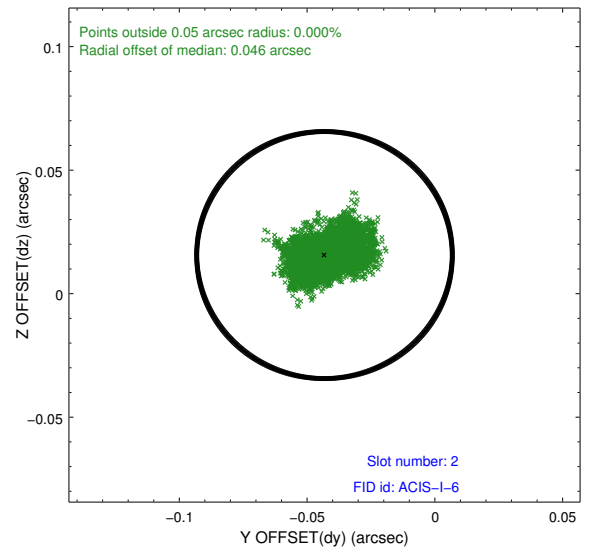
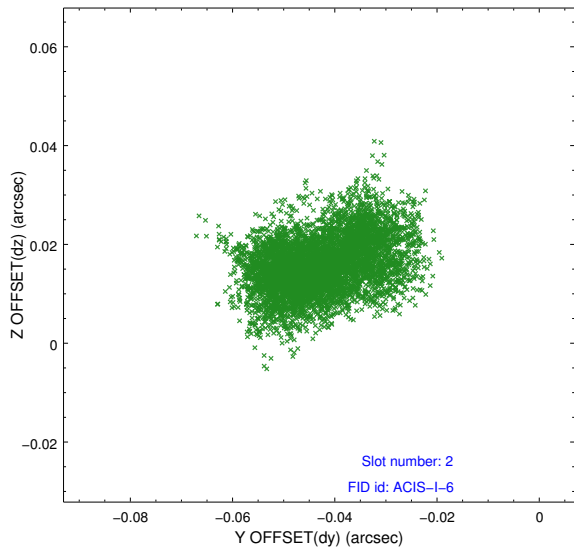
2.5.1 Slot 0



2.5.2 Slot 1



2.5.3 Slot 2



A Summary

A.1 Status

V&V Scientist	Jen Lauer
V&V Date (YYYY-MM-DD)	2012.12.12
V&V Edition	1
V&V Disposition and Status	OK
V&V Charge Time	22.75

A.2 Comments