

V&V Reference Report

L2 ASCDS Version : 8.4.5

Observation 5004 - L2 Version 3
Chandra X-Ray Center

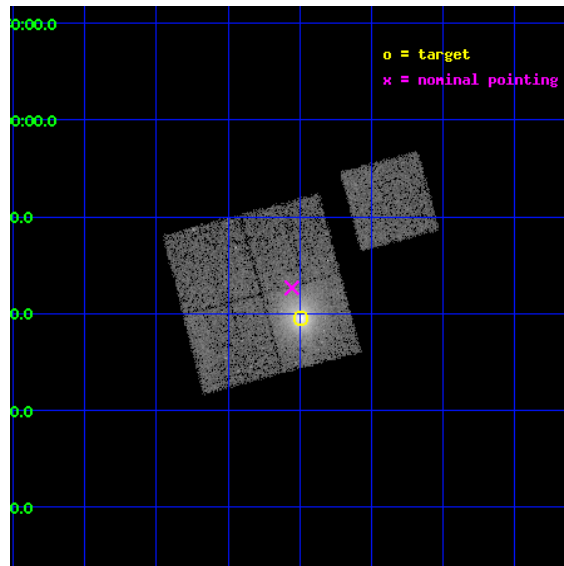
L2 Processing Date : Nov 12 2012

Contents

1	Front	2
2	OBI	3
2.1	OBI	3
2.1.1	Images	3
2.1.2	Bias	3
2.1.3	Parameters	4
2.1.4	Events	4
2.2	Compared Parameters	5
2.3	Aspect	6
2.4	Star Slots	9
2.4.1	Slot 3	9
2.4.2	Slot 4	10
2.4.3	Slot 5	11
2.4.4	Slot 6	12
2.4.5	Slot 7	13
2.5	FID Slots	14
2.5.1	Slot 0	14
2.5.2	Slot 1	15
2.5.3	Slot 2	16
A	Summary	17
A.1	Status	17
A.2	Comments	17

1 Front

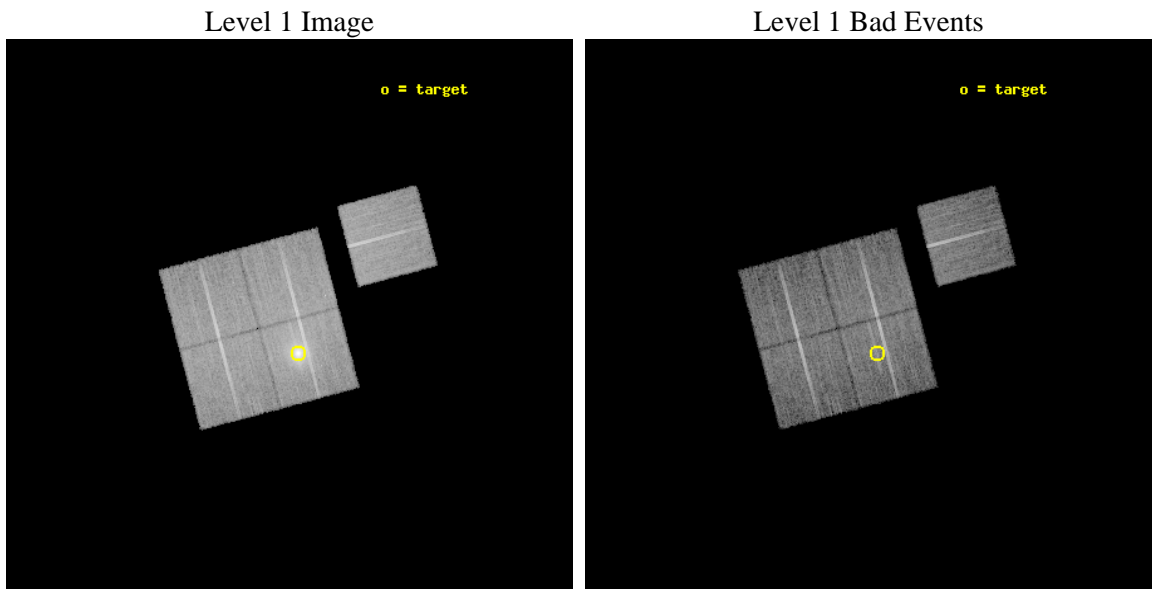
seq_num	800447	Sequence number
obs_id	5004	Observation id
title	Cluster studies: Determination of H0/q0	Proposal title
observer	DR. LEON VANSPEYBROECK	Principal investigator
object	A1689	Source name
dtcycle	0	
cycle	P	events from which exps? Prim/Second/Both
ra_targ	197.872917	Observer's specified target RA [deg]
dec_targ	-1.341111	Observer's specified target Dec [deg]
ra_nom	197.8887458984	Nominal RA [deg]
dec_nom	-1.2891169063655	Nominal Dec [deg]
roll_nom	75.15446818819	Nominal Roll [deg]
revision	3	Processing version of data
ontime	20118.999961287	Sum of GTIs [s]
livetime	19856.1304154	Livetime [s]
ontime0	20115.858981073	Sum of GTIs [s]
ontime1	20115.85897103	Sum of GTIs [s]
ontime2	20115.85897103	Sum of GTIs [s]
ontime3	20118.999961287	Sum of GTIs [s]
ontime6	20115.85897103	Sum of GTIs [s]
l2events	94180	Number of level 2 events



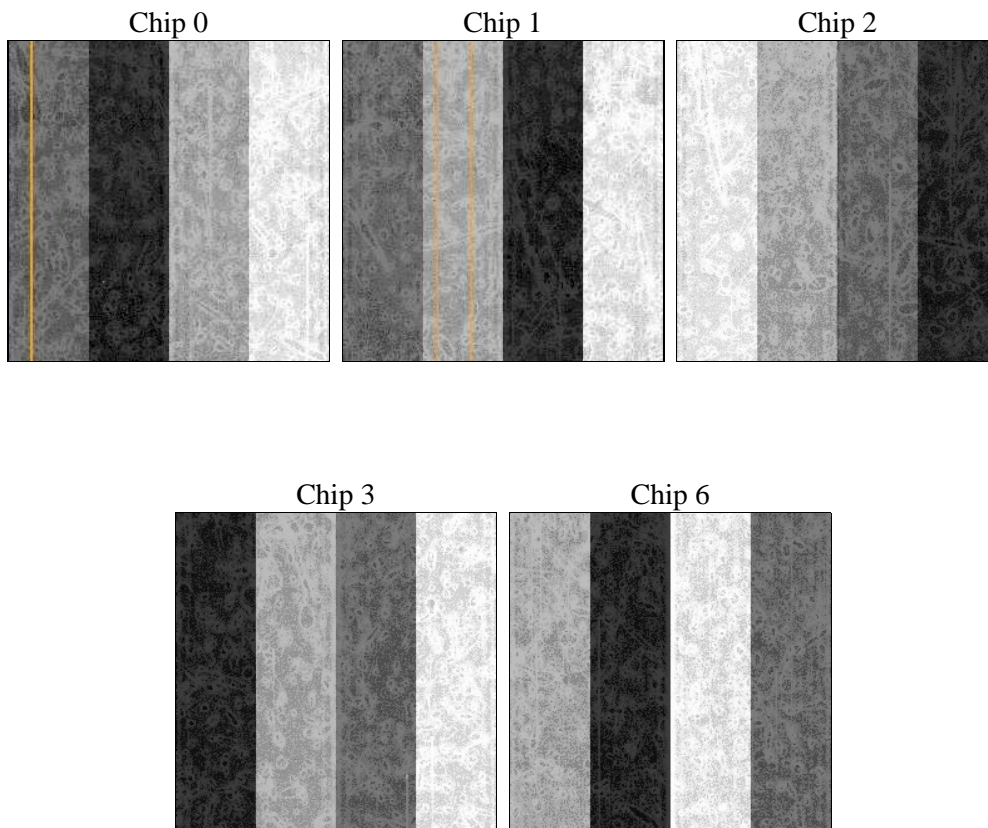
2 OBI

2.1 OBI

2.1.1 Images



2.1.2 Bias



2.1.3 Parameters

obi_num	0	Obi number	sched_exp_time	20000.000000	[s] Scheduled observation exposure time
ascdsver	8.4.5	Processing system revision	ontime	20118.999961287	Sum of GTIs [s]
caldbver	4.5.2	 	ontime0	20115.858981073	Sum of GTIs [s]
date	2012-11-12T15:09:51	Date and time of file creation	ontime1	20115.85897103	Sum of GTIs [s]
revision	3	Processing version of data	ontime2	20115.85897103	Sum of GTIs [s]
			ontime3	20118.999961287	Sum of GTIs [s]
			ontime6	20115.85897103	Sum of GTIs [s]
			l1events	592316	Number of level 1 events

2.1.4 Events

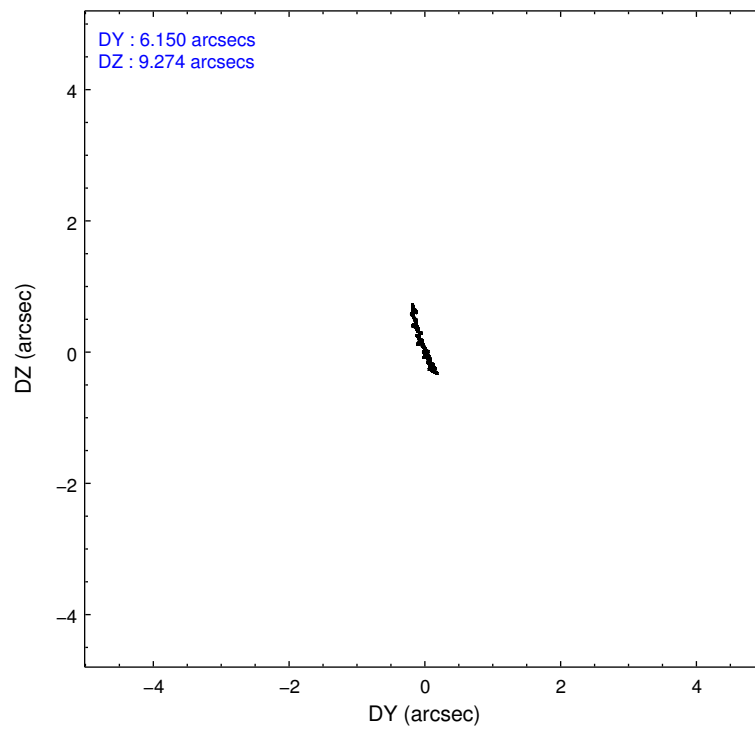
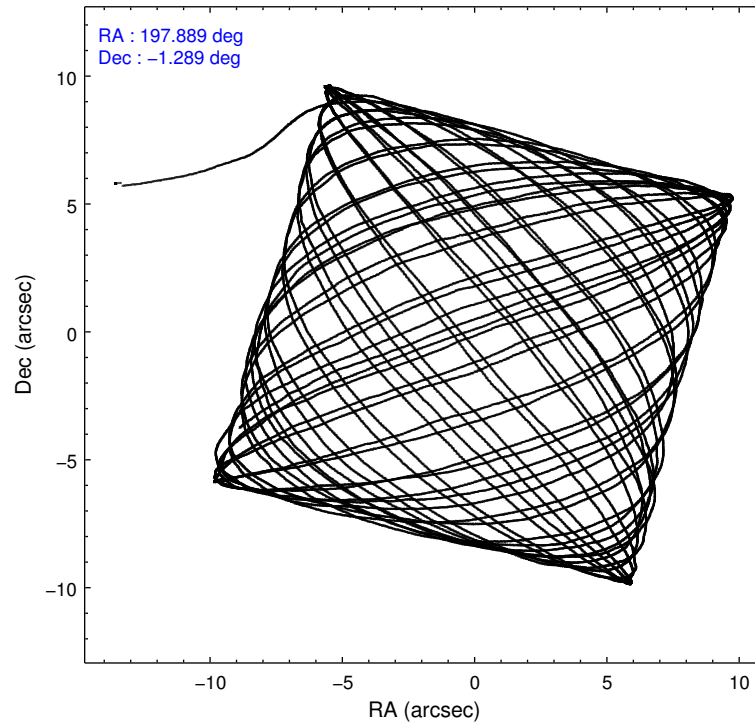
	ccd 0	ccd 1	ccd 2	ccd 3	ccd 6
level 1 events	101651	103469	115651	159051	112494
rejected events	90089	90508	103360	101404	101136
rejected %	88%	87%	89%	63%	89%

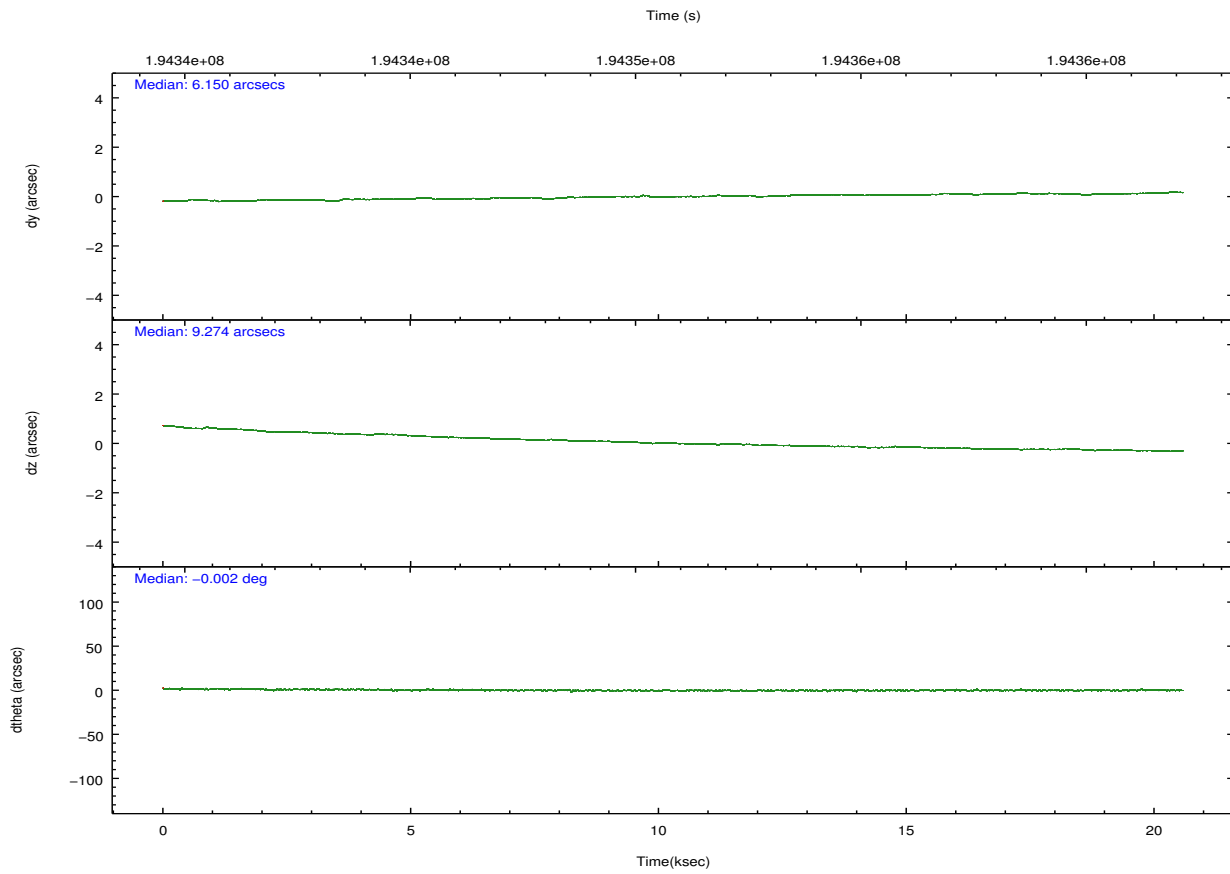
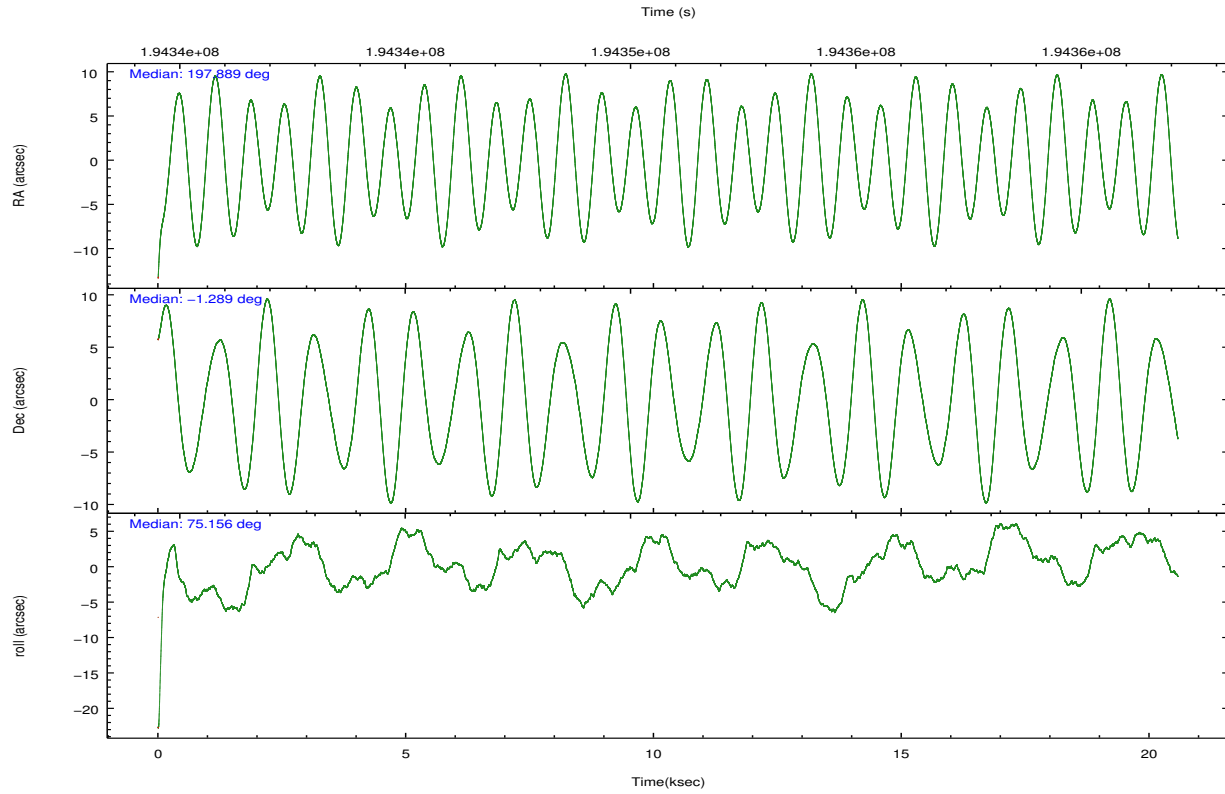
	ccd 0	ccd 1	ccd 2	ccd 3	ccd 6
grade 0 events	4236	5132	5015	42365	4042
	4%	4%	4%	26%	3%
grade 1 events	53	49	69	250	43
	0%	0%	0%	0%	0%
grade 2 events	2578	2580	2695	6817	2285
	2%	2%	2%	4%	2%
grade 3 events	1379	1376	1204	2624	1308
	1%	1%	1%	1%	1%
grade 4 events	1205	1410	1349	2719	1267
	1%	1%	1%	1%	1%
grade 5 events	3899	4142	3794	4525	4521
	3%	4%	3%	2%	4%
grade 6 events	2168	2464	2029	3144	2460
	2%	2%	1%	1%	2%
grade 7 events	86133	86316	99496	96607	96568
	84%	83%	86%	60%	85%

2.2 Compared Parameters

Parameter	Planned	Actual	Parameter	Planned	Actual
Instrument	ACIS	ACIS	Obspar format version number	7	7
Detector	ACIS-01236	ACIS-01236	Obspar file type	PREDICTED	ACTUAL
Grating	NONE	NONE	Obspar update status	NONE	UPDATED
Data mode	VFAINT	VFAINT	Number of optional ACIS chips dropped	0	0
Observation mode	POINTING	POINTING	On-chip summing requested	N	N
[deg] Pointing RA	197.896019	197.8887458984011	Subarray requested	NONE	NONE
[deg] Pointing Dec	-1.315569	-1.289116906365475	Alternating exposures requested	N	N
[deg] Pointing Roll	74.945951	75.15446818818954	[s] Primary exposure time	0.000000	3.1
[mm] SIM focus pos	-0.782348	-0.7809083437167272			
[mm] SIM defocus	0	0.001439871863259334			
[mm] SIM translation stage pos	-225.840463	-225.8433433320239			
[mm] SIM translation stage offset	-7.752	-7.749109670905796			
[s] Observation start time (MET)	194341128.184000	194339973.54291			
Observation start date	2004-02-28T07:37:44	2004-02-28T07:19:33			
[s] Observation end time (MET)	194361128.184000	194361575.93135			
Observation end date	2004-02-28T13:11:04	2004-02-28T13:19:35			
Read mode	TIMED	TIMED			

2.3 Aspect



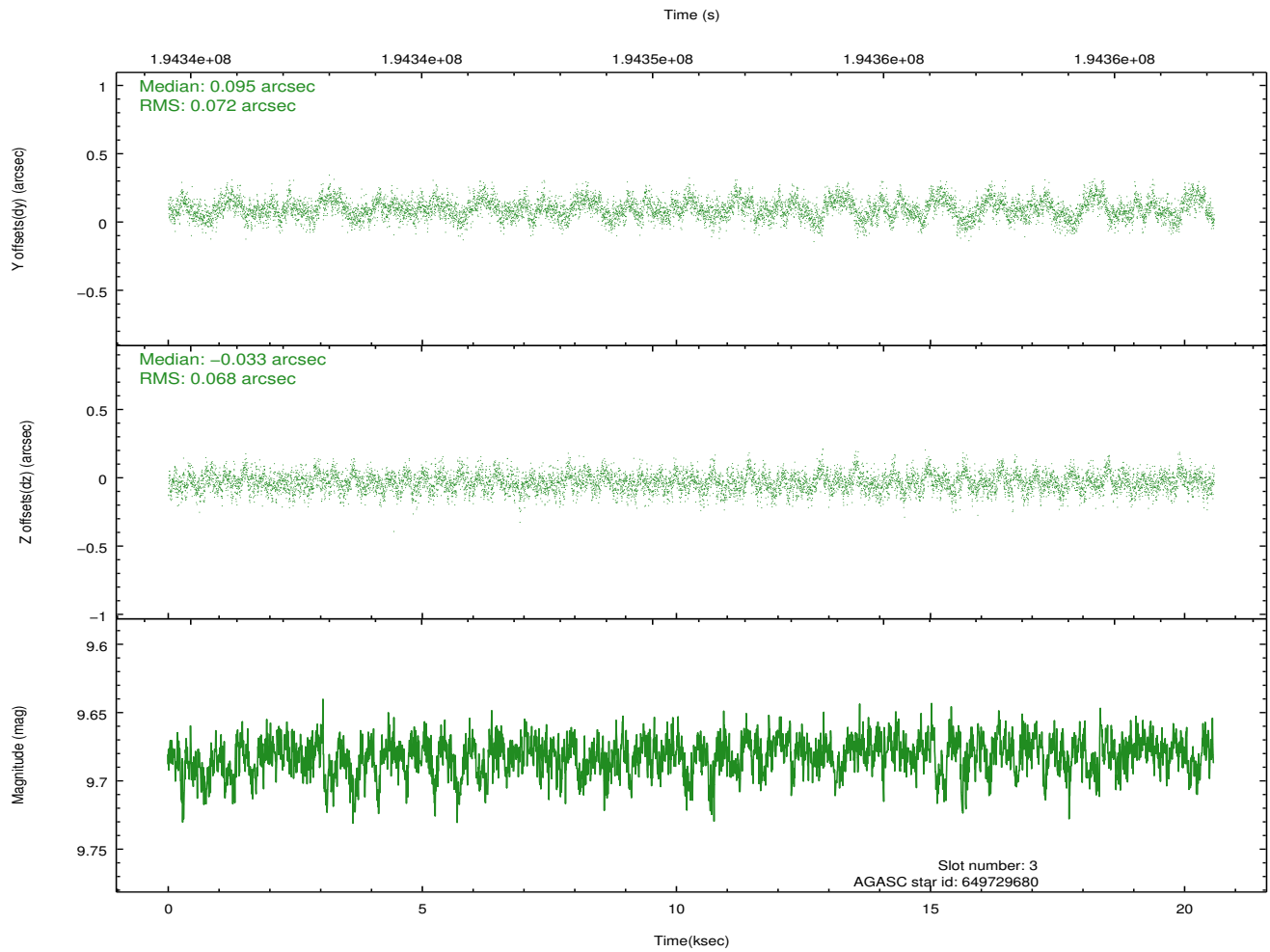
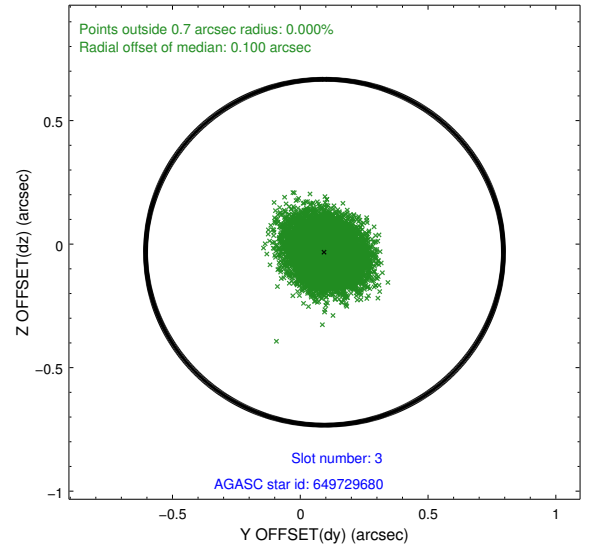
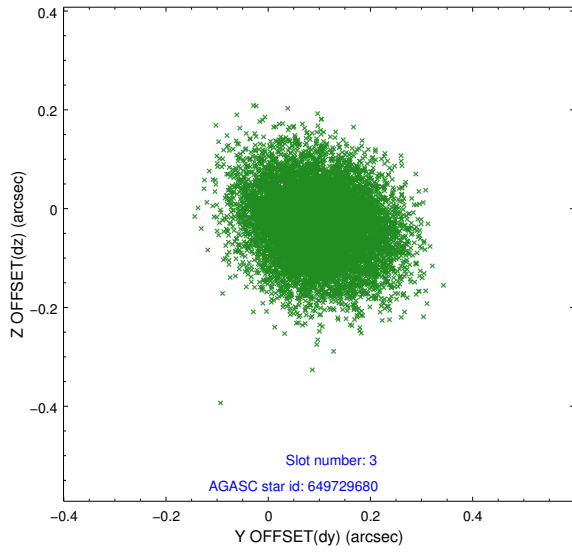


Slot Statistics

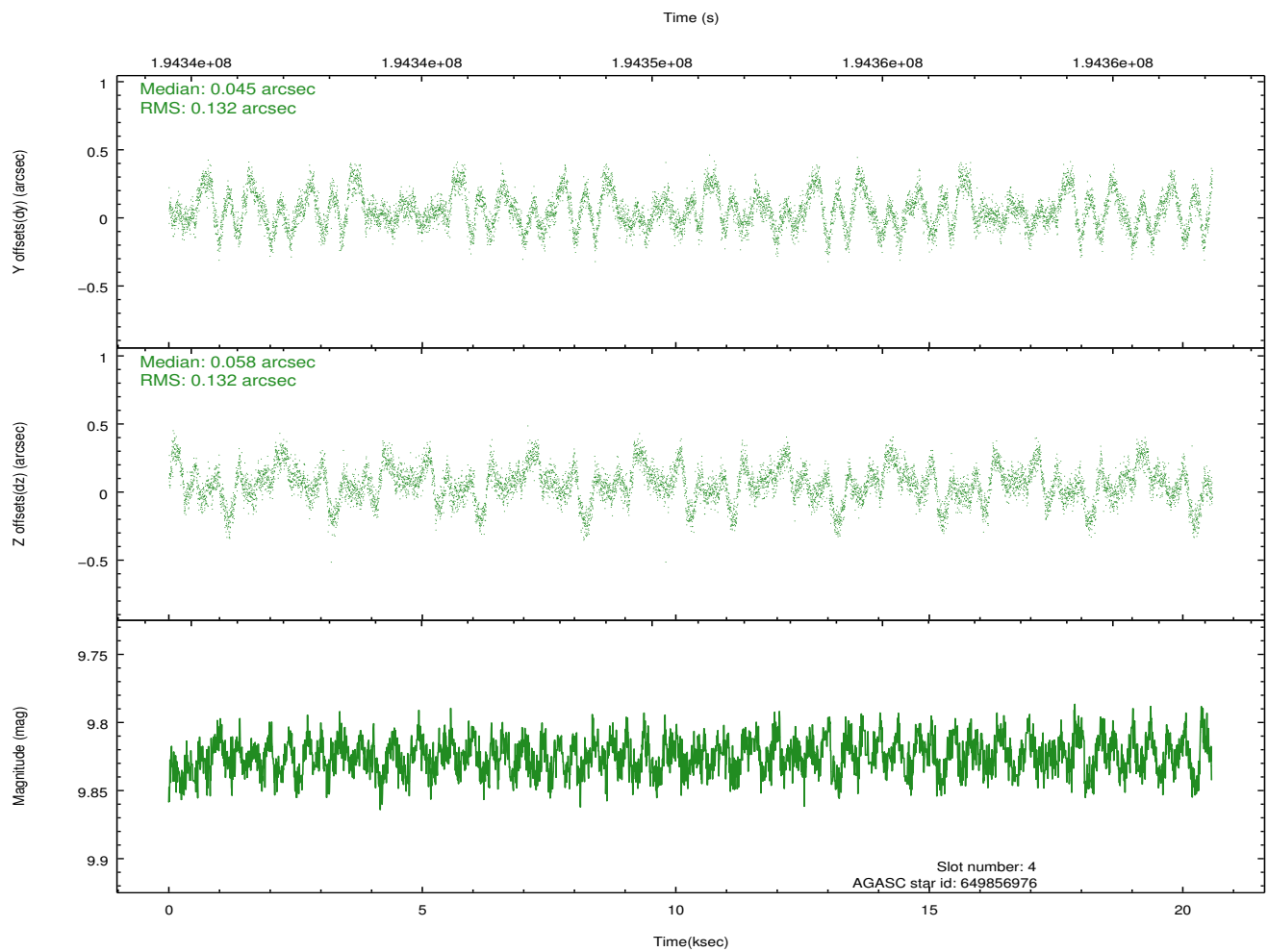
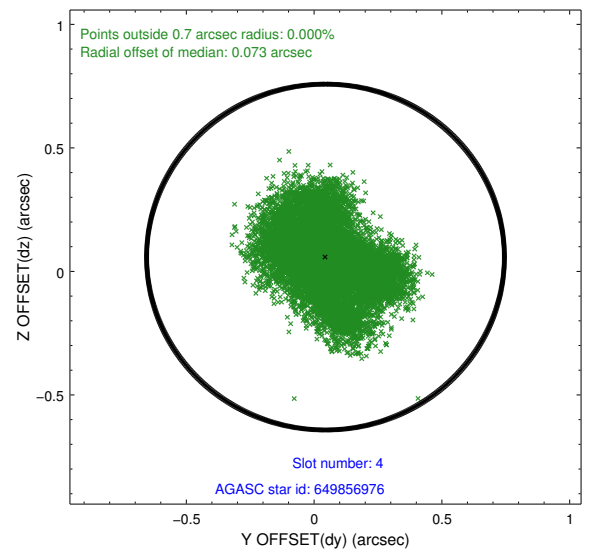
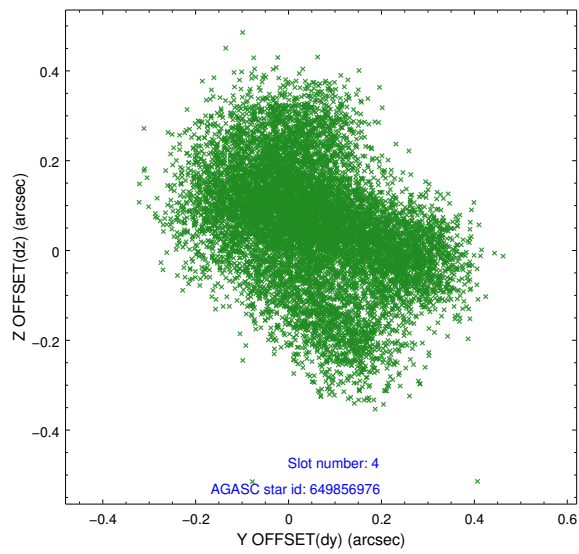
slot	status	id	mag	n_pts	med_dy	med_dz	dr1	dr2	ra	dec	mean_y	mean_z
0	FID	ACIS-I-1	7.23	5020	0.076	-0.060	0.008	0.017	0.000000	0.000000	933.50	-991.93
1	FID	ACIS-I-5	7.22	5020	-0.213	0.073	0.007	0.012	0.000000	0.000000	-1814.81	905.56
2	FID	ACIS-I-6	7.25	5020	0.046	0.058	0.008	0.013	0.000000	0.000000	398.81	1550.26
3	GUIDE	649729680	9.68	10029	0.095	-0.033	0.106	0.173	197.477731	-1.403690	-697.54	1371.32
4	GUIDE	649856976	9.83	10031	0.045	0.058	0.207	0.308	197.988518	-1.476151	-472.10	-471.31
5	GUIDE	649858864	9.64	10032	-0.178	-0.047	0.118	0.197	197.684428	-0.695156	1958.62	1316.12
6	GUIDE	649860032	8.93	10036	-0.133	0.007	0.084	0.131	197.517008	-0.616758	2074.85	1971.39
7	GUIDE	649726472	10.53	10025	0.165	0.029	0.198	0.336	197.403429	-1.852261	-2326.12	1210.14

2.4 Star Slots

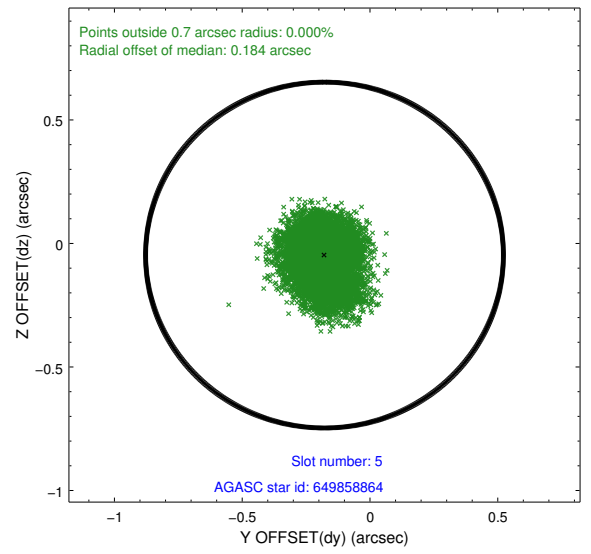
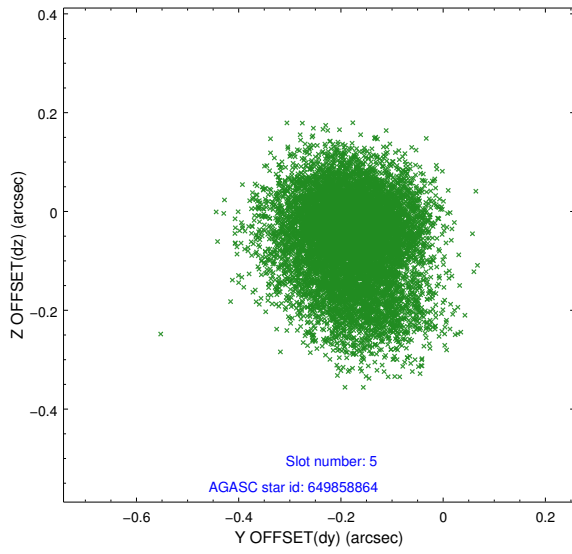
2.4.1 Slot 3



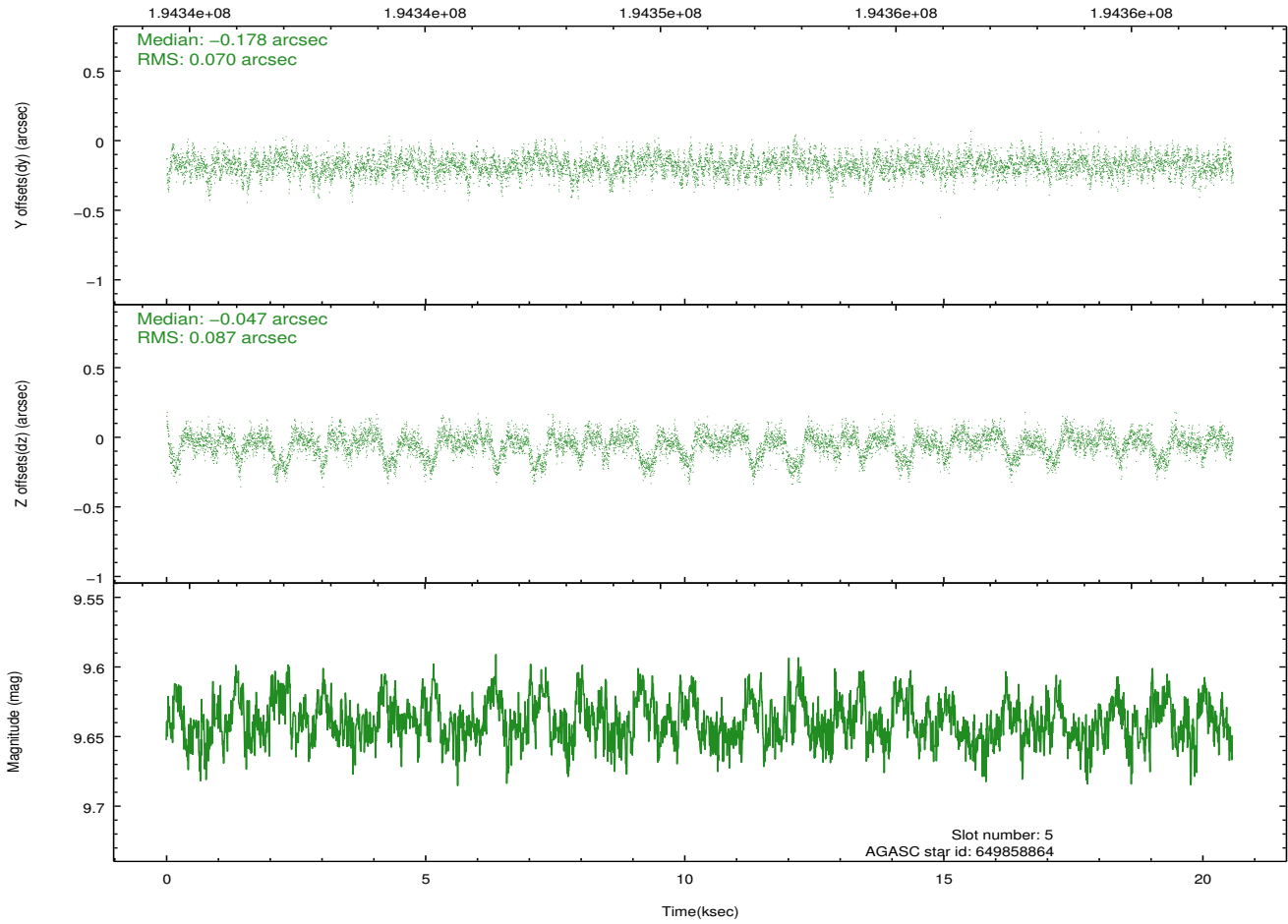
2.4.2 Slot 4



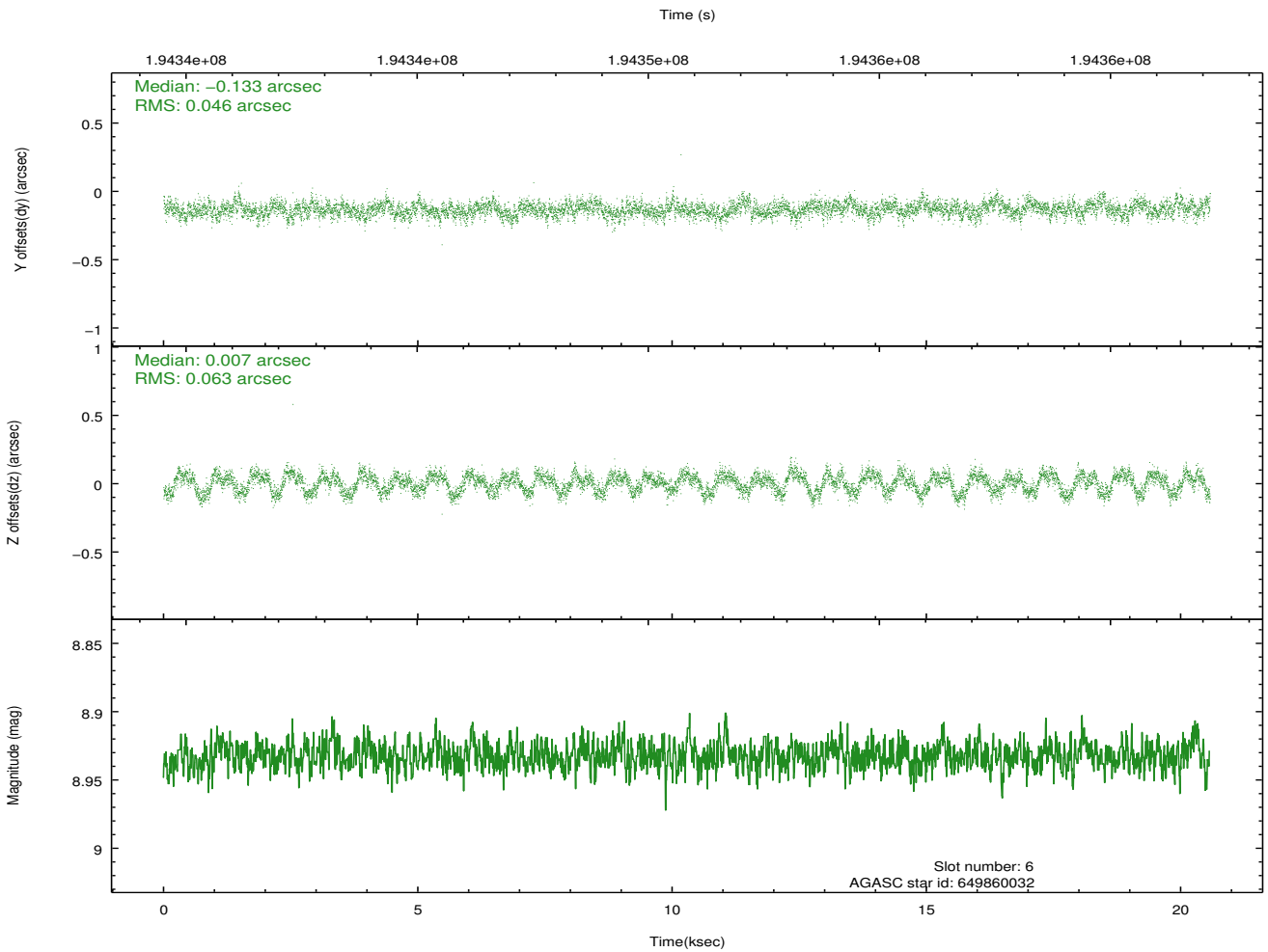
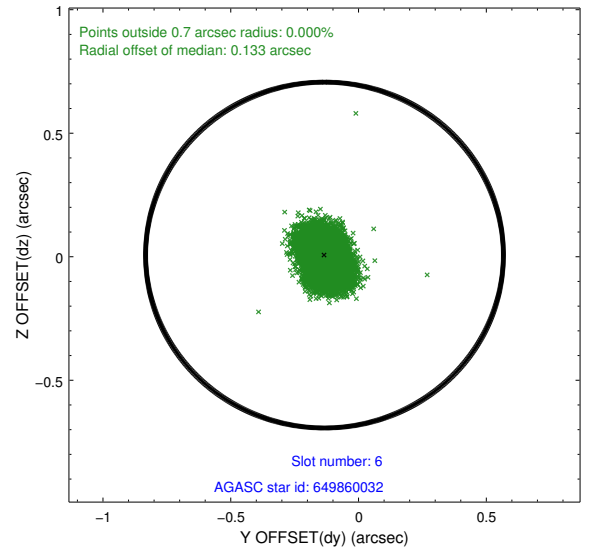
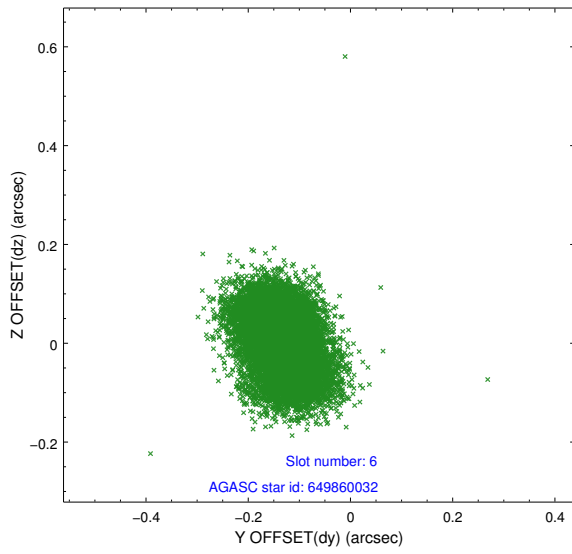
2.4.3 Slot 5



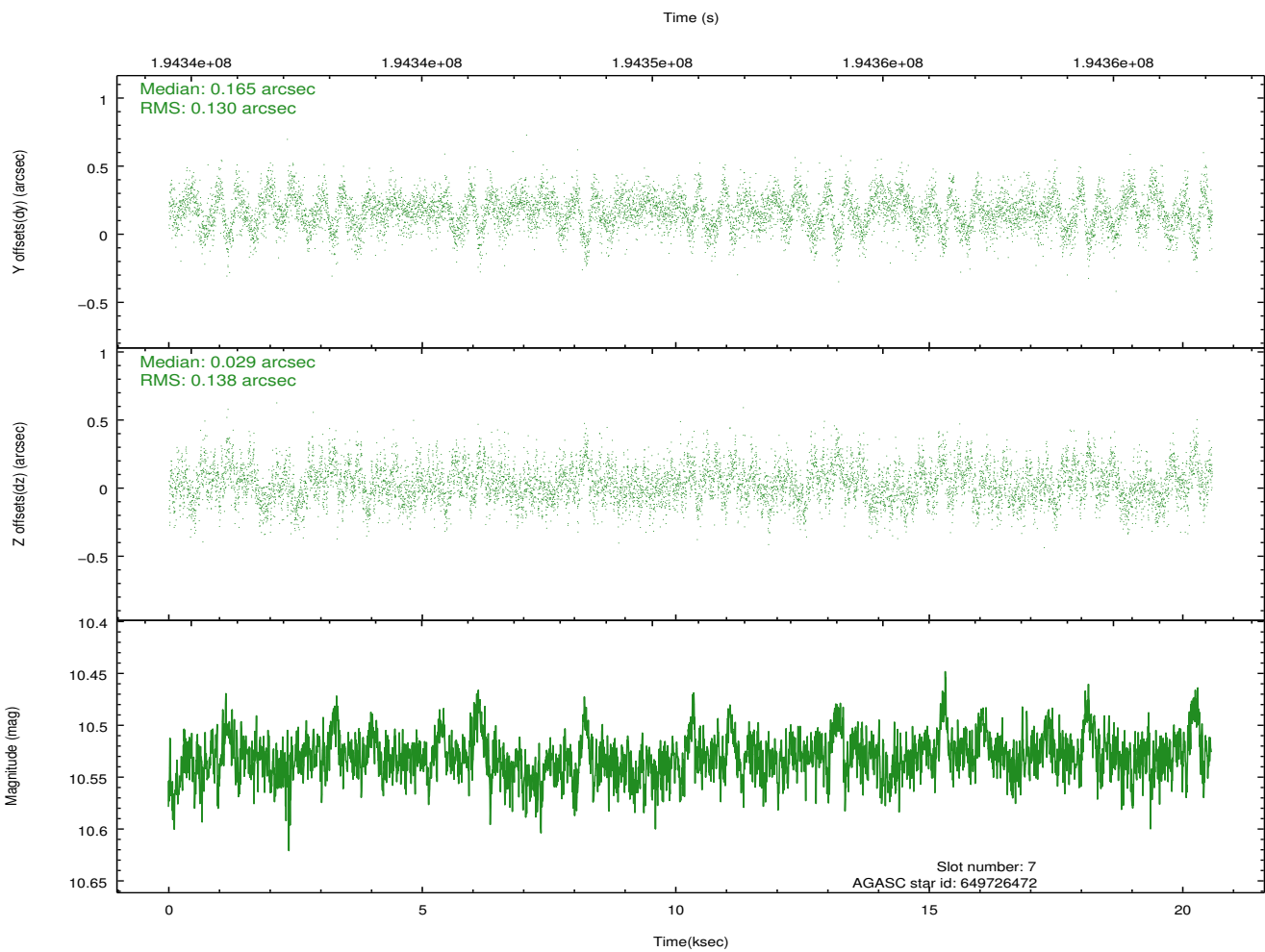
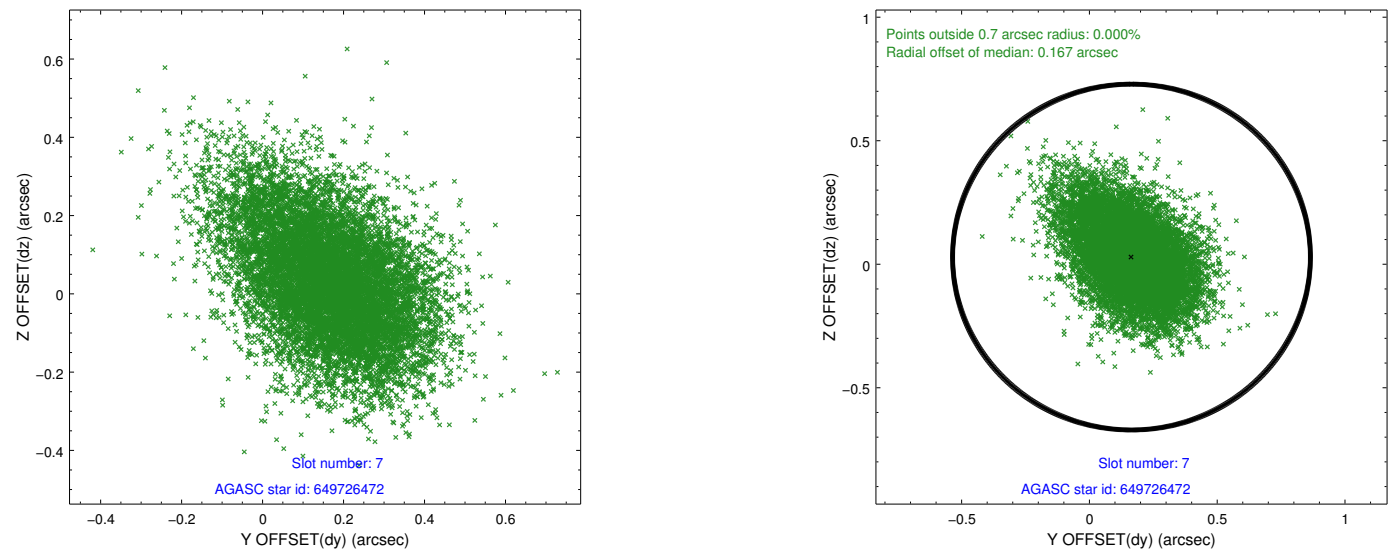
Time (s)



2.4.4 Slot 6

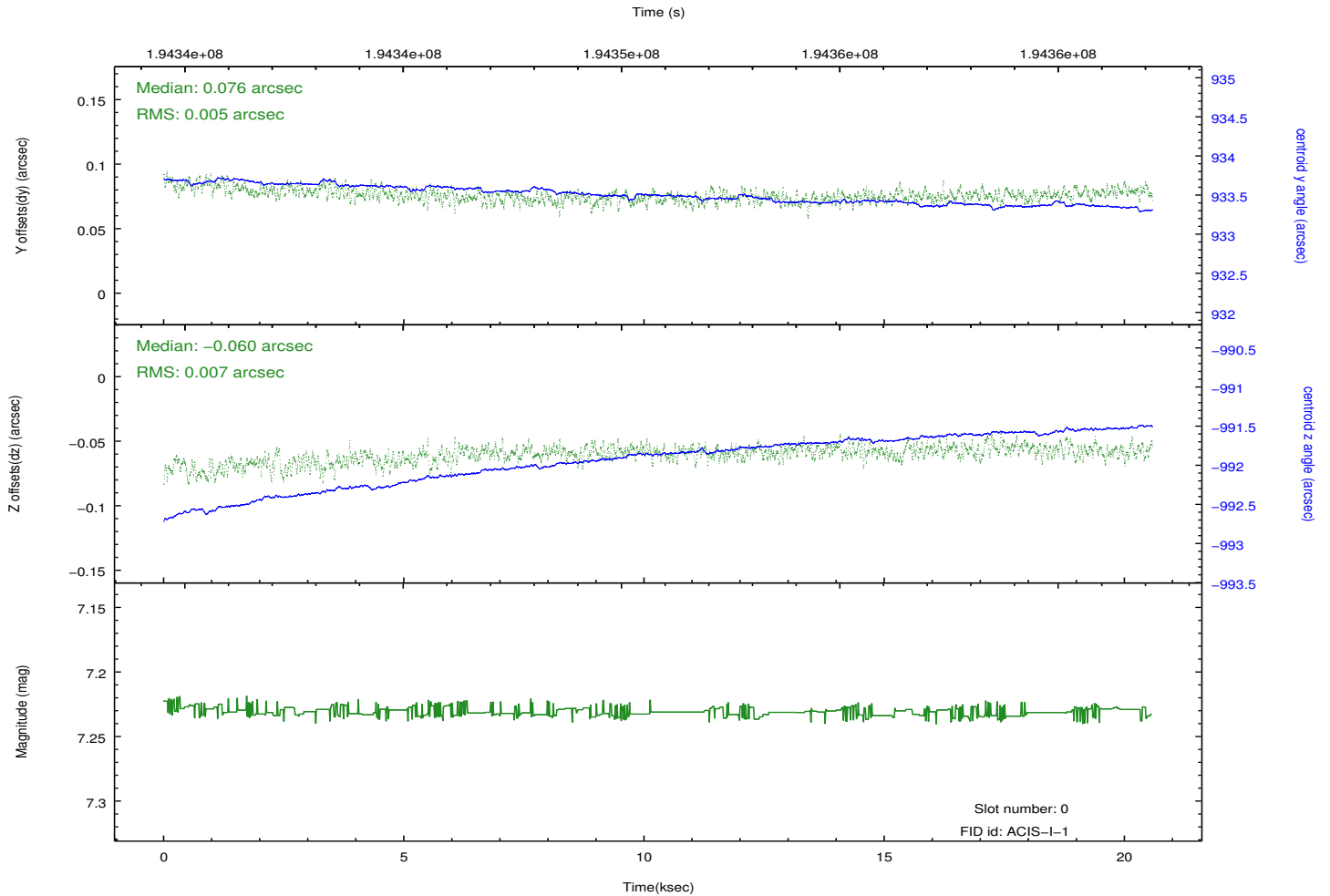
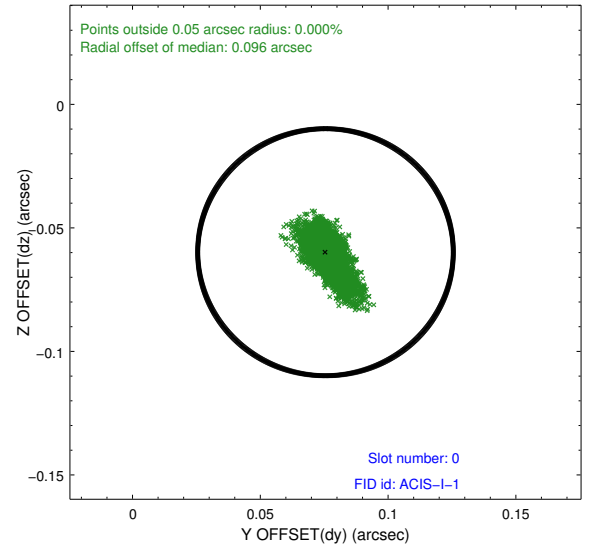
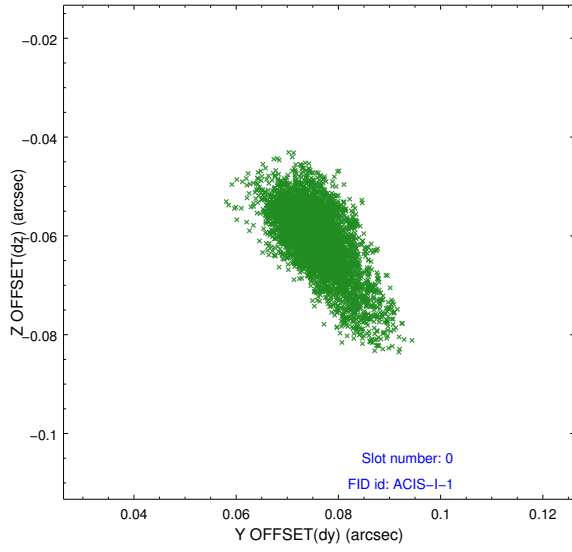


2.4.5 Slot 7

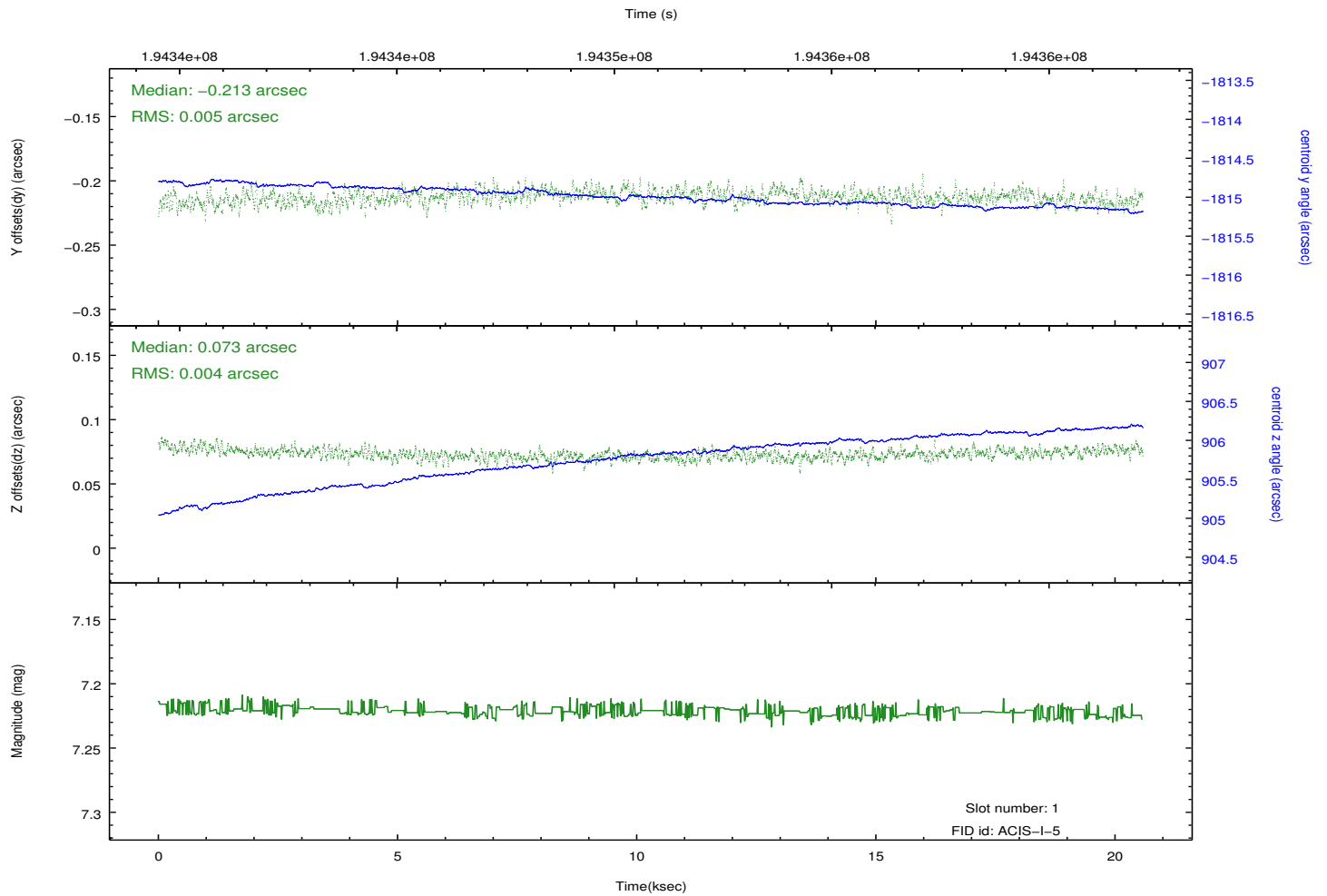
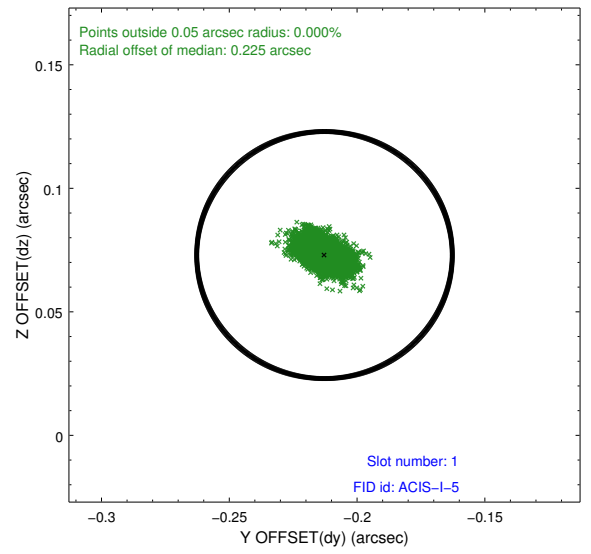
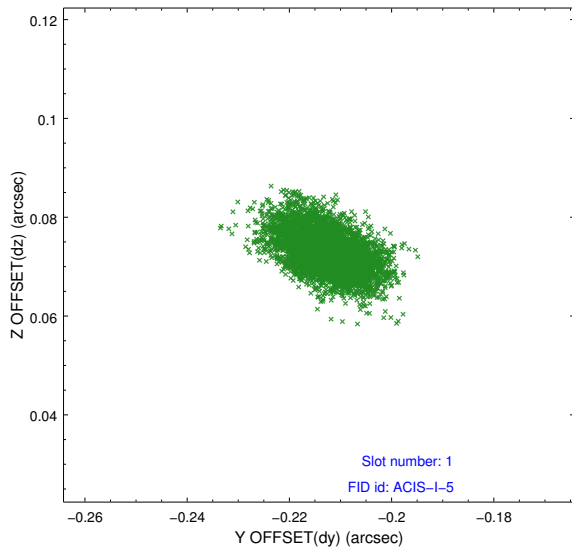


2.5 FID Slots

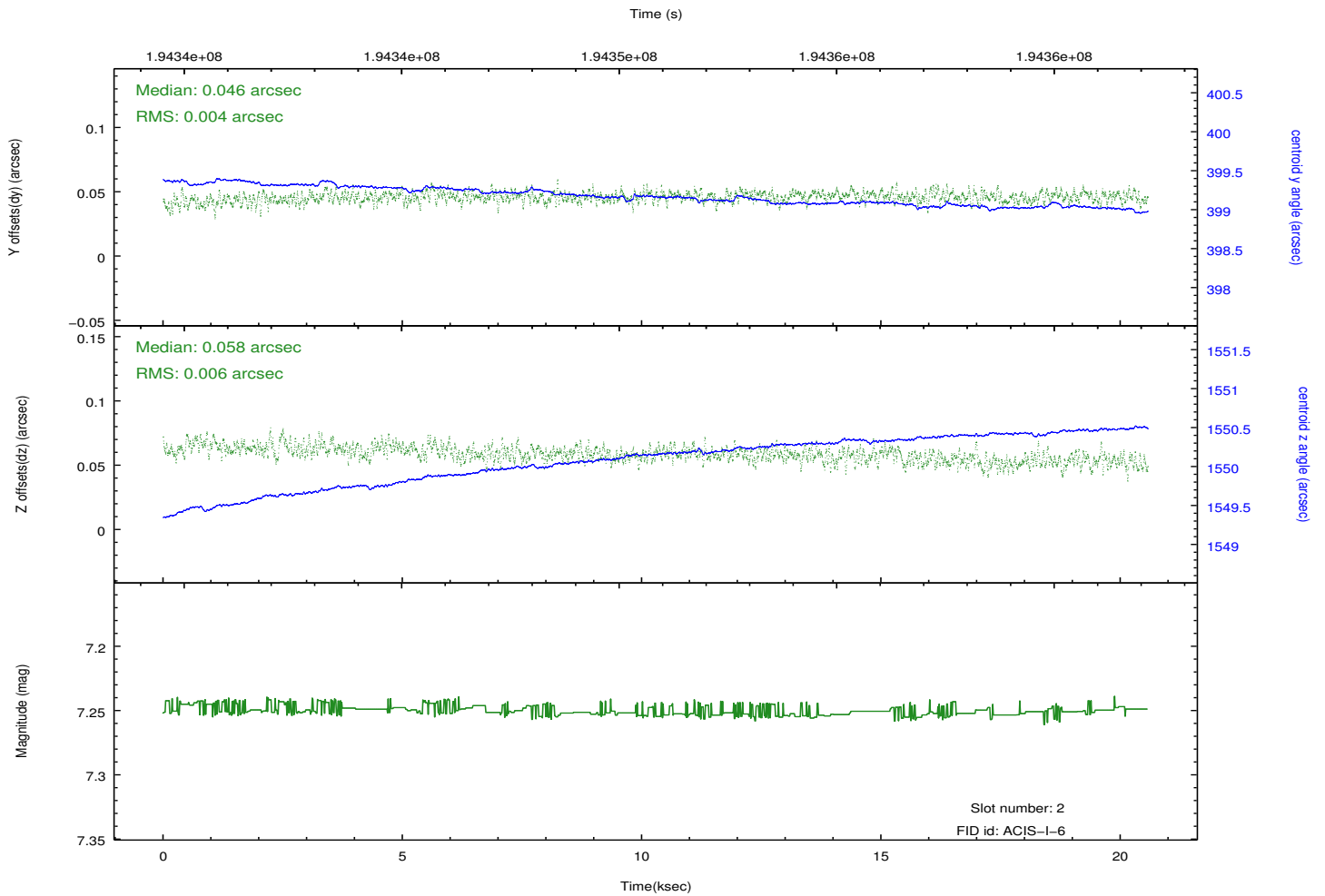
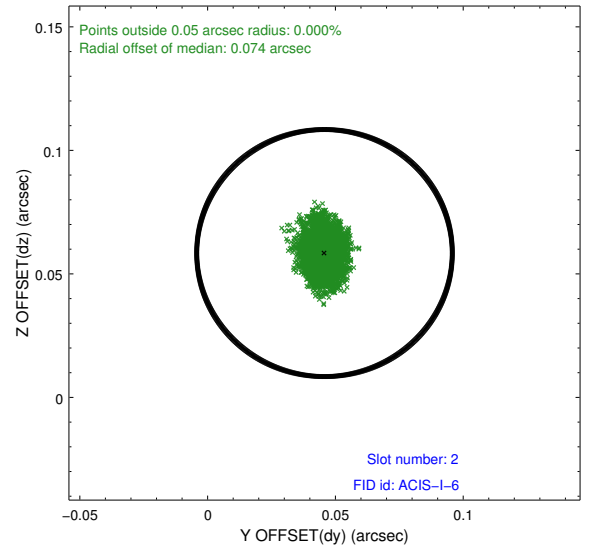
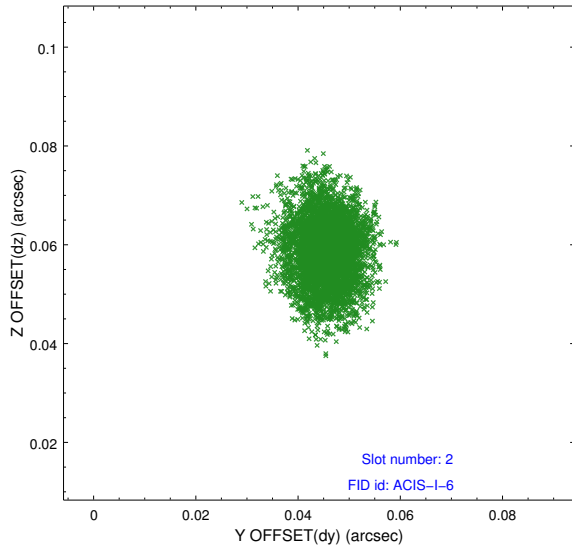
2.5.1 Slot 0



2.5.2 Slot 1



2.5.3 Slot 2



A Summary

A.1 Status

V&V Scientist	Jen Lauer
V&V Date (YYYY-MM-DD)	2012.12.11
V&V Edition	1
V&V Disposition and Status	OK
V&V Charge Time	20.122

A.2 Comments