

V&V Reference Report

L2 ASCDS Version : 8.4.5

Observation 5034 - L2 Version 3
Chandra X-Ray Center

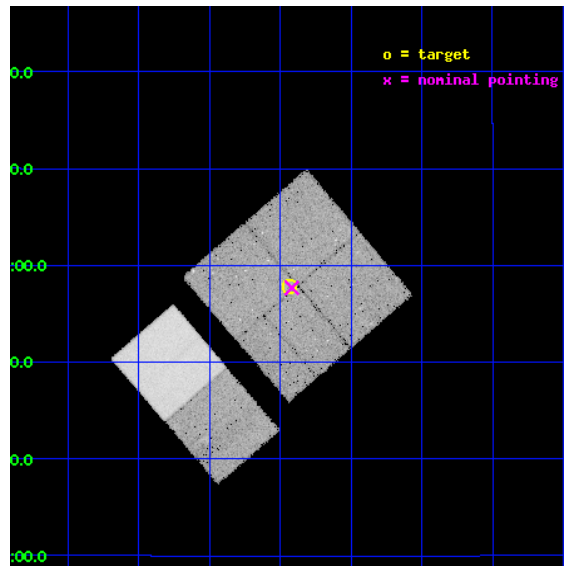
L2 Processing Date : Dec 3 2012

Contents

1	Front	2
2	OBI	3
2.1	OBI	3
2.1.1	Images	3
2.1.2	Bias	3
2.1.3	Parameters	4
2.1.4	Events	4
2.2	Compared Parameters	5
2.3	Aspect	6
2.4	Star Slots	9
2.4.1	Slot 3	9
2.4.2	Slot 4	10
2.4.3	Slot 5	11
2.4.4	Slot 6	12
2.4.5	Slot 7	13
2.5	FID Slots	14
2.5.1	Slot 0	14
2.5.2	Slot 1	15
2.5.3	Slot 2	16
A	Summary	17
A.1	Status	17
A.2	Comments	17

1 Front

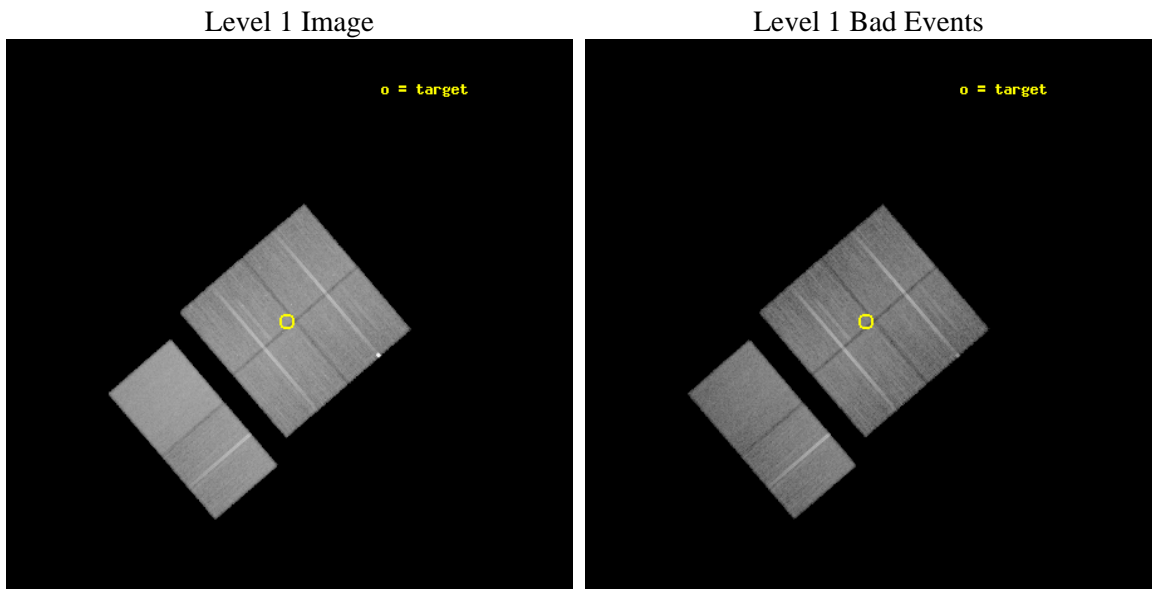
seq_num	900341	Sequence number
obs_id	5034	Observation id
title	A Chandra survey of Extremely Red Objects	Proposal title
observer	Dr. Marcella Brusa	Principal investigator
object	Daddi field - 3	Source name
dtycycle	0	
cycle	P	events from which exps? Prim/Second/Both
ra_targ	222.35875	Observer's specified target RA [deg]
dec_targ	8.9635	Observer's specified target Dec [deg]
ra_nom	222.35454519817	Nominal RA [deg]
dec_nom	8.9614253786409	Nominal Dec [deg]
roll_nom	229.30408142141	Nominal Roll [deg]
revision	3	Processing version of data
ontime	30121.599887788	Sum of GTIs [s]
livetime	29740.182052959	Livetime [s]
ontime0	30121.599887788	Sum of GTIs [s]
ontime1	30121.599887788	Sum of GTIs [s]
ontime2	30121.599887788	Sum of GTIs [s]
ontime3	30121.599887788	Sum of GTIs [s]
ontime6	30121.599887788	Sum of GTIs [s]
ontime7	30121.599887788	Sum of GTIs [s]
l2events	232116	Number of level 2 events



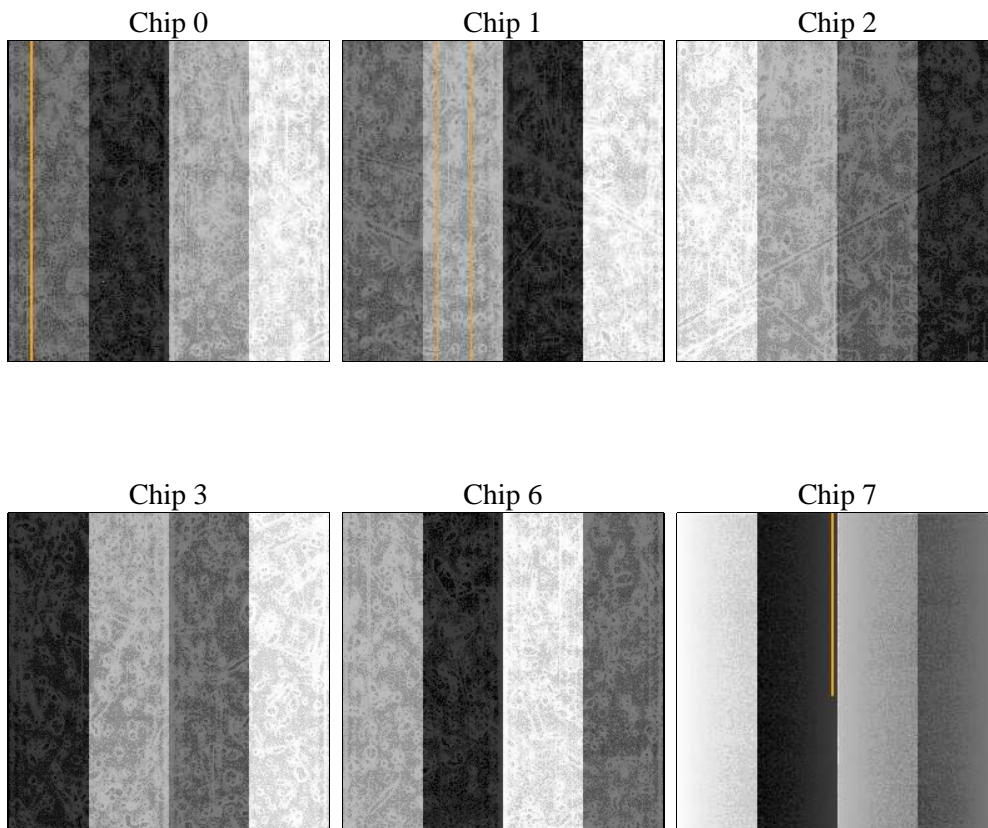
2 OBI

2.1 OBI

2.1.1 Images



2.1.2 Bias



2.1.3 Parameters

obi_num	0	Obi number	sched_exp_time	30000.000000	[s] Scheduled observation exposure time
ascdsver	8.4.5	Processing system revision	ontime	30121.599887788	Sum of GTIs [s]
caldbver	4.5.2	 	ontime0	30121.599887788	Sum of GTIs [s]
date	2012-12-03T02:05:45	Date and time of file creation	ontime1	30121.599887788	Sum of GTIs [s]
revision	3	Processing version of data	ontime2	30121.599887788	Sum of GTIs [s]
			ontime3	30121.599887788	Sum of GTIs [s]
			ontime6	30121.599887788	Sum of GTIs [s]
			ontime7	30121.599887788	Sum of GTIs [s]
			l1events	1437234	Number of level 1 events

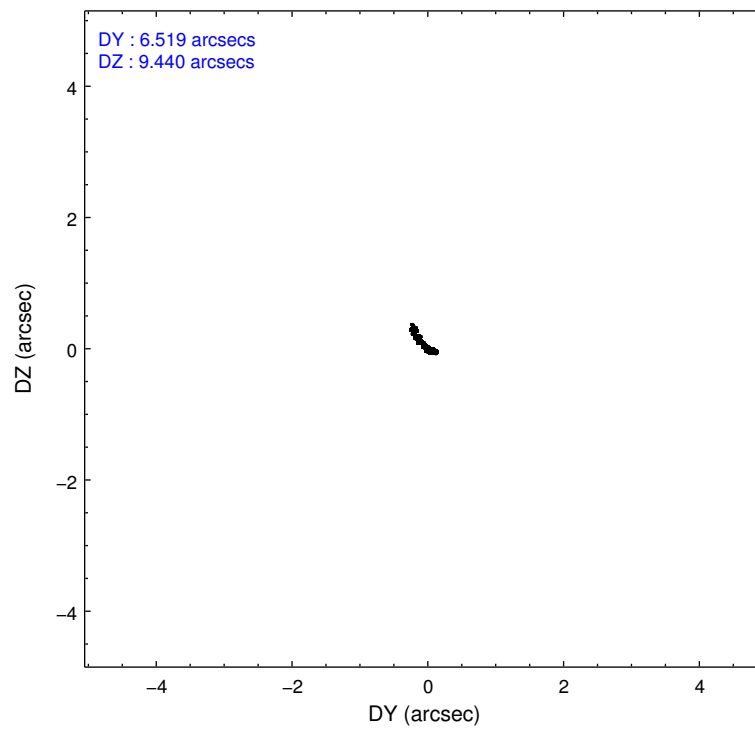
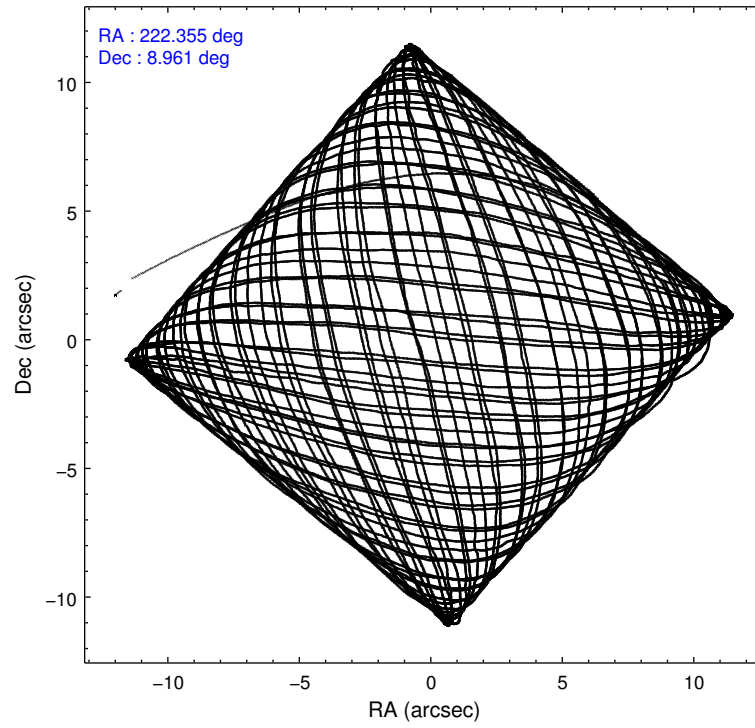
2.1.4 Events

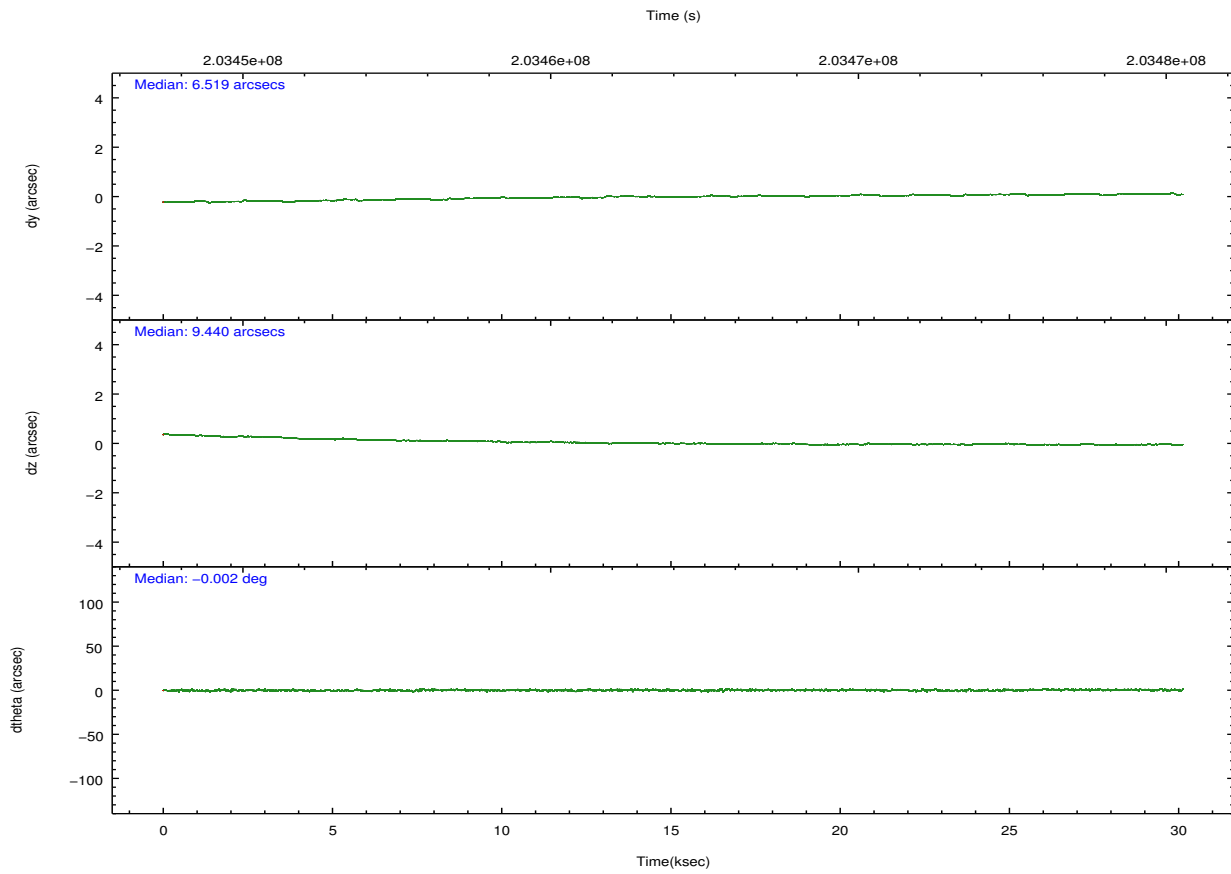
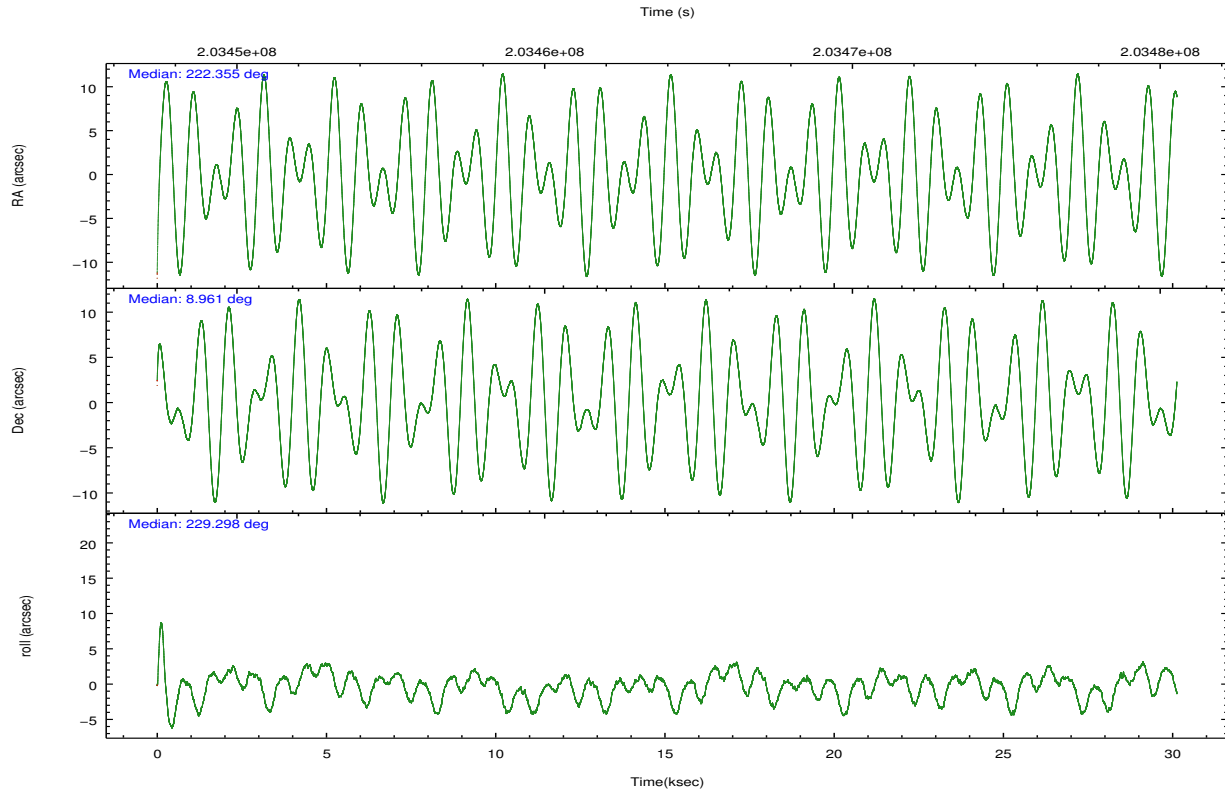
	ccd 0	ccd 1	ccd 2	ccd 3	ccd 6	ccd 7		ccd 0	ccd 1	ccd 2	ccd 3	ccd 6	ccd 7
level 1 events	220095	213713	232339	226016	236179	308892	grade 0 events	21388	11553	12120	12107	10996	11507
rejected events	179277	185998	206564	199972	210160	187709		9%	5%	5%	5%	4%	3%
rejected %	81%	87%	88%	88%	88%	60%	grade 1 events	166	103	132	153	112	325
								0%	0%	0%	0%	0%	0%
							grade 2 events	11373	6293	5391	5190	5548	25282
								5%	2%	2%	2%	2%	8%
							grade 3 events	2788	2680	2597	2647	2574	11197
								1%	1%	1%	1%	1%	3%
							grade 4 events	2448	2941	2519	2611	2605	11144
								1%	1%	1%	1%	1%	3%
							grade 5 events	9104	9661	8745	10174	10729	29661
								4%	4%	3%	4%	4%	9%
							grade 6 events	4774	5565	4373	4699	5537	67782
								2%	2%	1%	2%	2%	21%
							grade 7 events	168054	174917	196462	188435	198078	151994
								76%	81%	84%	83%	83%	49%

2.2 Compared Parameters

Parameter	Planned	Actual	Parameter	Planned	Actual
Instrument	ACIS	ACIS	Obspar format version number	7	7
Detector	ACIS-012367	ACIS-012367	Obspar file type	PREDICTED	ACTUAL
Grating	NONE	NONE	Obspar update status	NONE	UPDATED
Data mode	VFAINT	VFAINT	Number of optional ACIS chips dropped	0	0
Observation mode	POINTING	POINTING	On-chip summing requested	N	N
[deg] Pointing RA	222.359579	222.3545451981673	Subarray requested	NONE	NONE
[deg] Pointing Dec	8.988372	8.961425378640879	Alternating exposures requested	N	N
[deg] Pointing Roll	229.094609	229.3040814214124	[s] Primary exposure time	0.000000	3.2
[mm] SIM focus pos	-0.782348	-0.7809083437167272			
[mm] SIM defocus	0	0.001439871863259334			
[mm] SIM translation stage pos	-233.592463	-233.5874344608287			
[mm] SIM translation stage offset	0	-0.005018542100998502			
[s] Observation start time (MET)	203449038.184000	203447296.25648			
Observation start date	2004-06-12T17:36:14	2004-06-12T17:08:16			
[s] Observation end time (MET)	203479038.184000	203479548.3954			
Observation end date	2004-06-13T01:56:14	2004-06-13T02:05:48			
Read mode	TIMED	TIMED			

2.3 Aspect



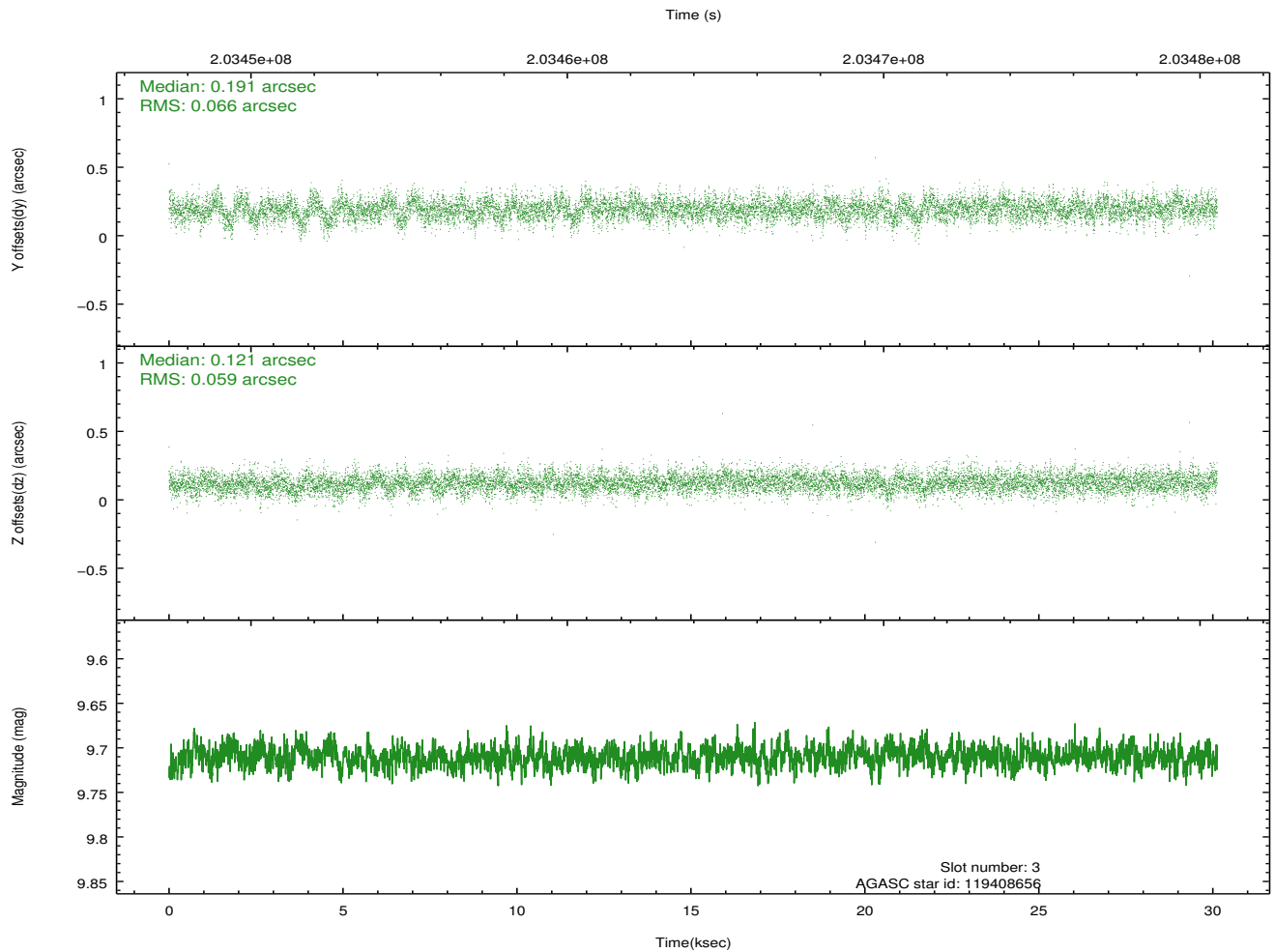
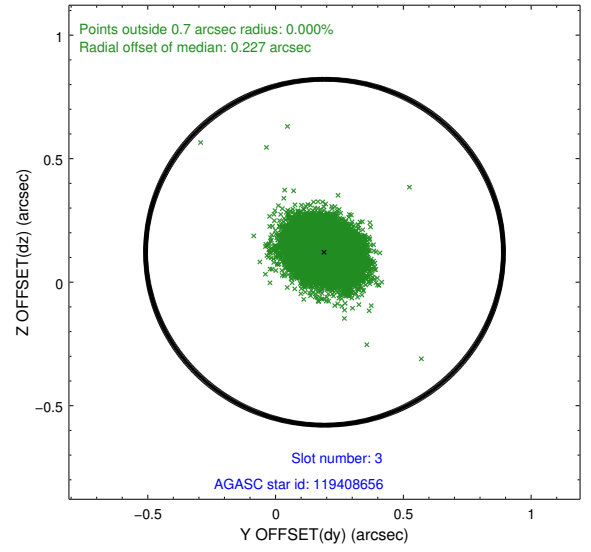
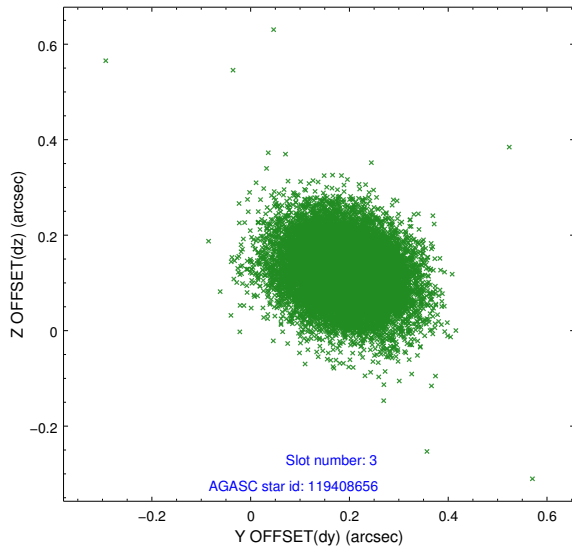


Slot Statistics

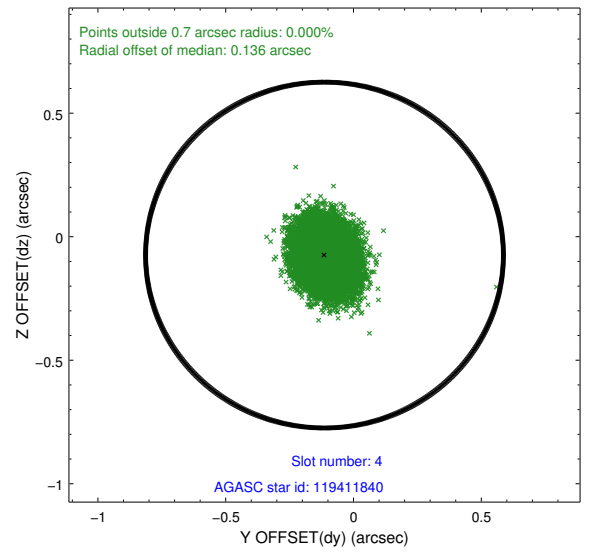
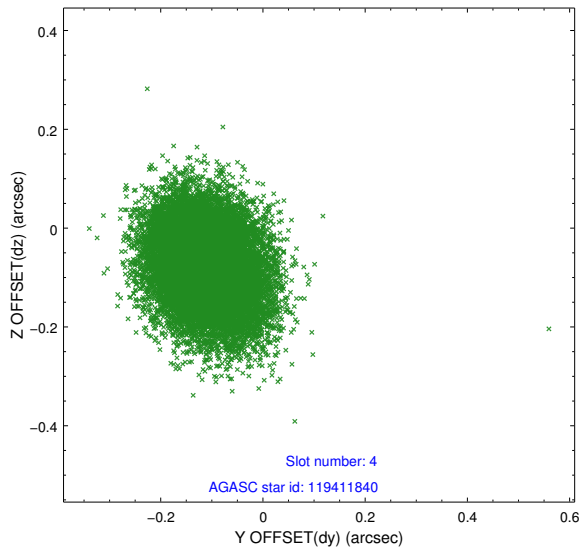
slot	status	id	mag	n_pts	med_dy	med_dz	dr1	dr2	ra	dec	mean_y	mean_z
0	FID	ACIS-I-2	7.14	7347	-0.050	-0.057	0.009	0.016	0.000000	0.000000	-761.02	-839.37
1	FID	ACIS-I-4	7.19	7349	0.109	0.051	0.010	0.018	0.000000	0.000000	2153.17	1066.87
2	FID	ACIS-I-5	7.23	7349	-0.159	0.075	0.011	0.017	0.000000	0.000000	-1814.86	1064.83
3	GUIDE	119408656	9.71	14682	0.191	0.121	0.092	0.153	222.086631	8.778551	1207.05	-239.26
4	GUIDE	119411840	9.44	14690	-0.113	-0.074	0.098	0.158	222.041386	9.490009	-624.94	-2037.00
5	GUIDE	120325072	9.27	14679	-0.125	0.026	0.077	0.124	222.613060	9.408510	-1732.68	-310.43
6	GUIDE	120327320	9.66	14690	0.121	-0.002	0.101	0.166	222.306742	8.399268	1726.30	1246.80
7	GUIDE	120333112	7.49	14696	-0.076	-0.069	0.045	0.075	222.982560	8.825335	-1008.44	2057.78

2.4 Star Slots

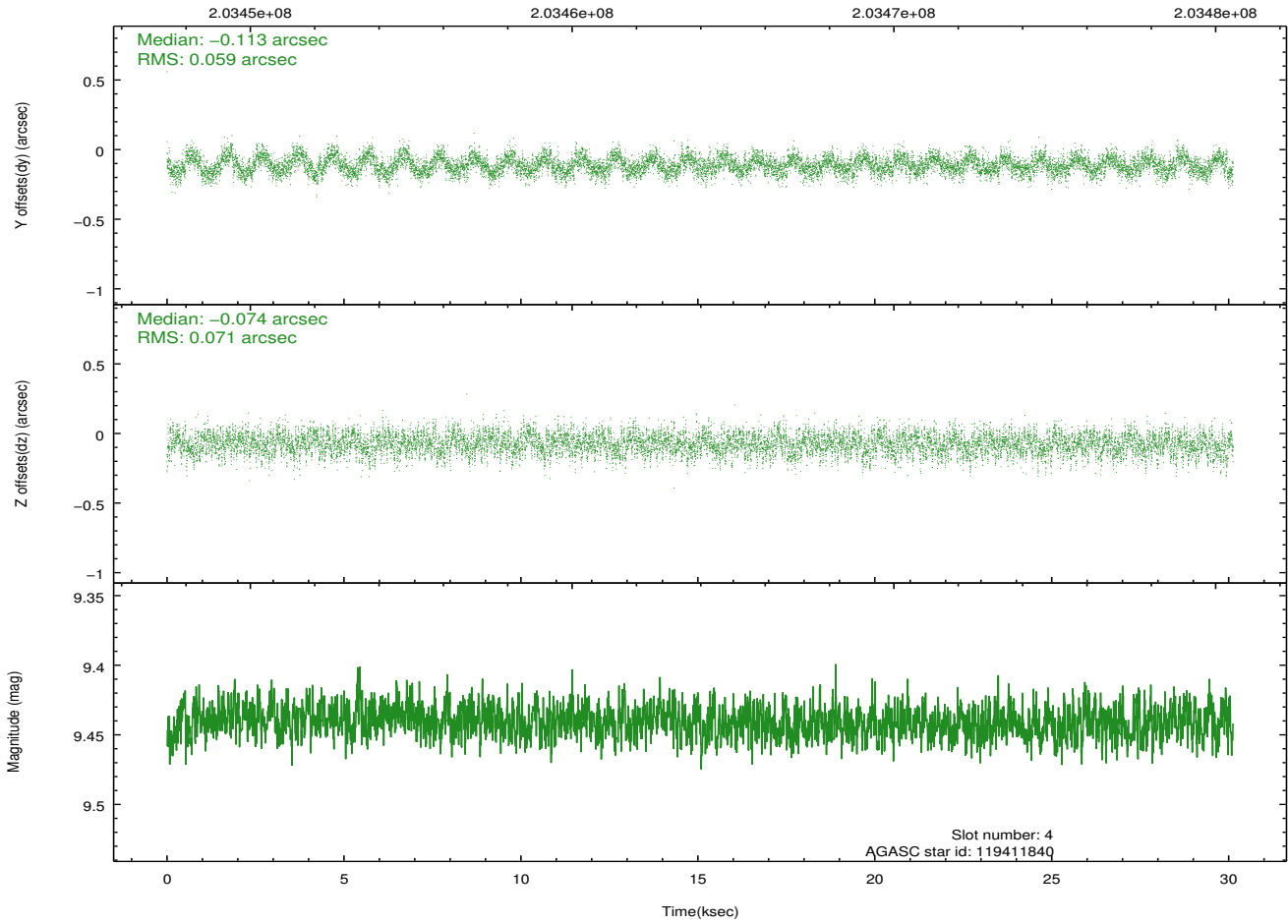
2.4.1 Slot 3



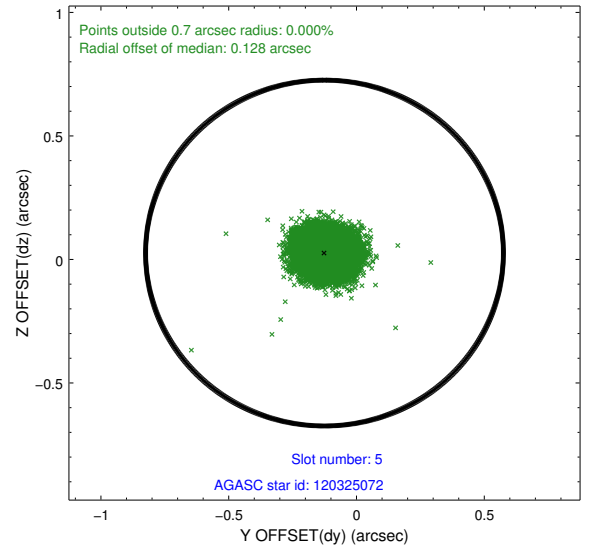
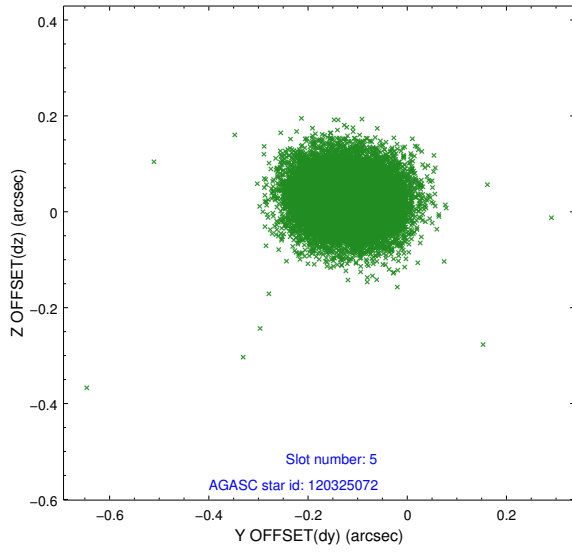
2.4.2 Slot 4



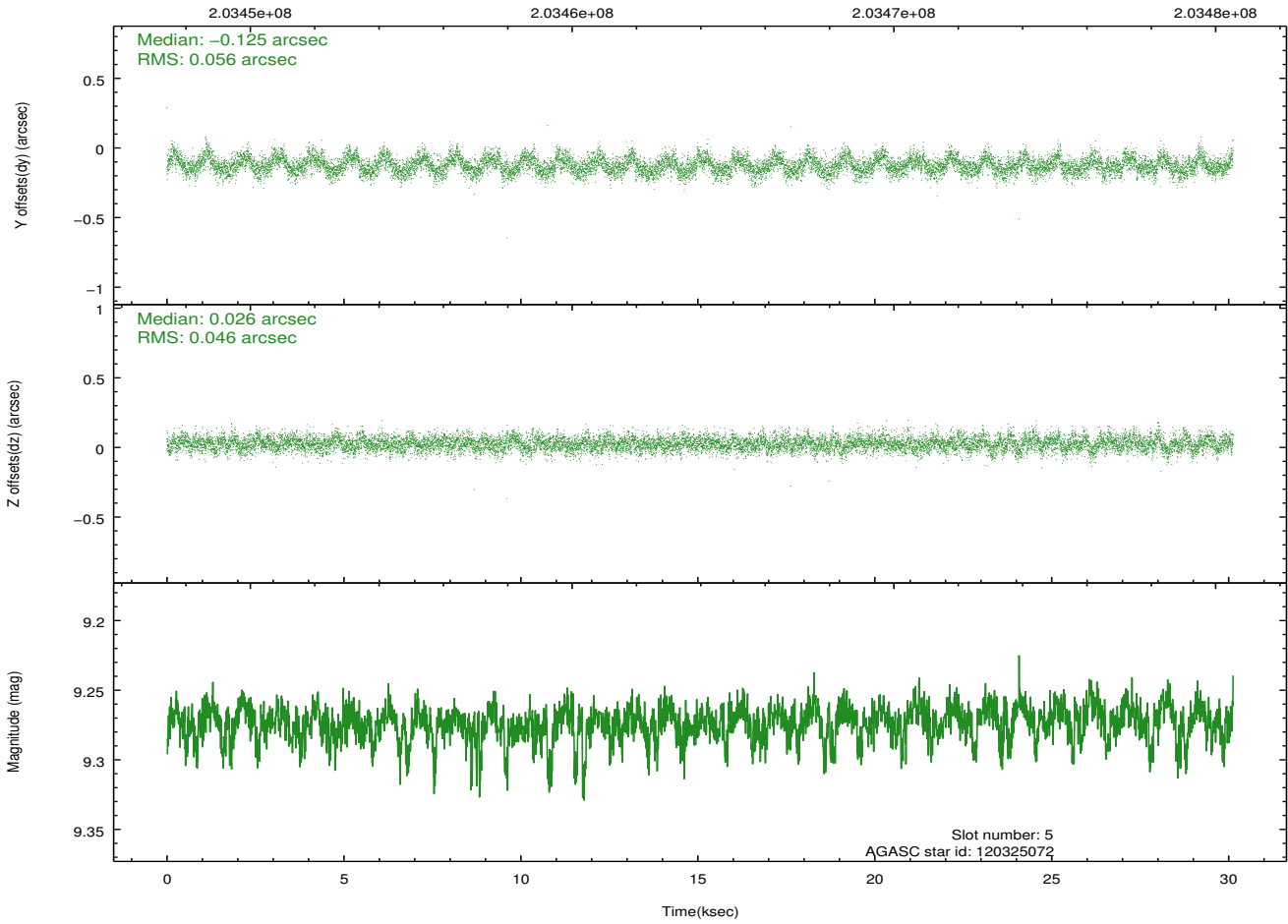
Time (s)



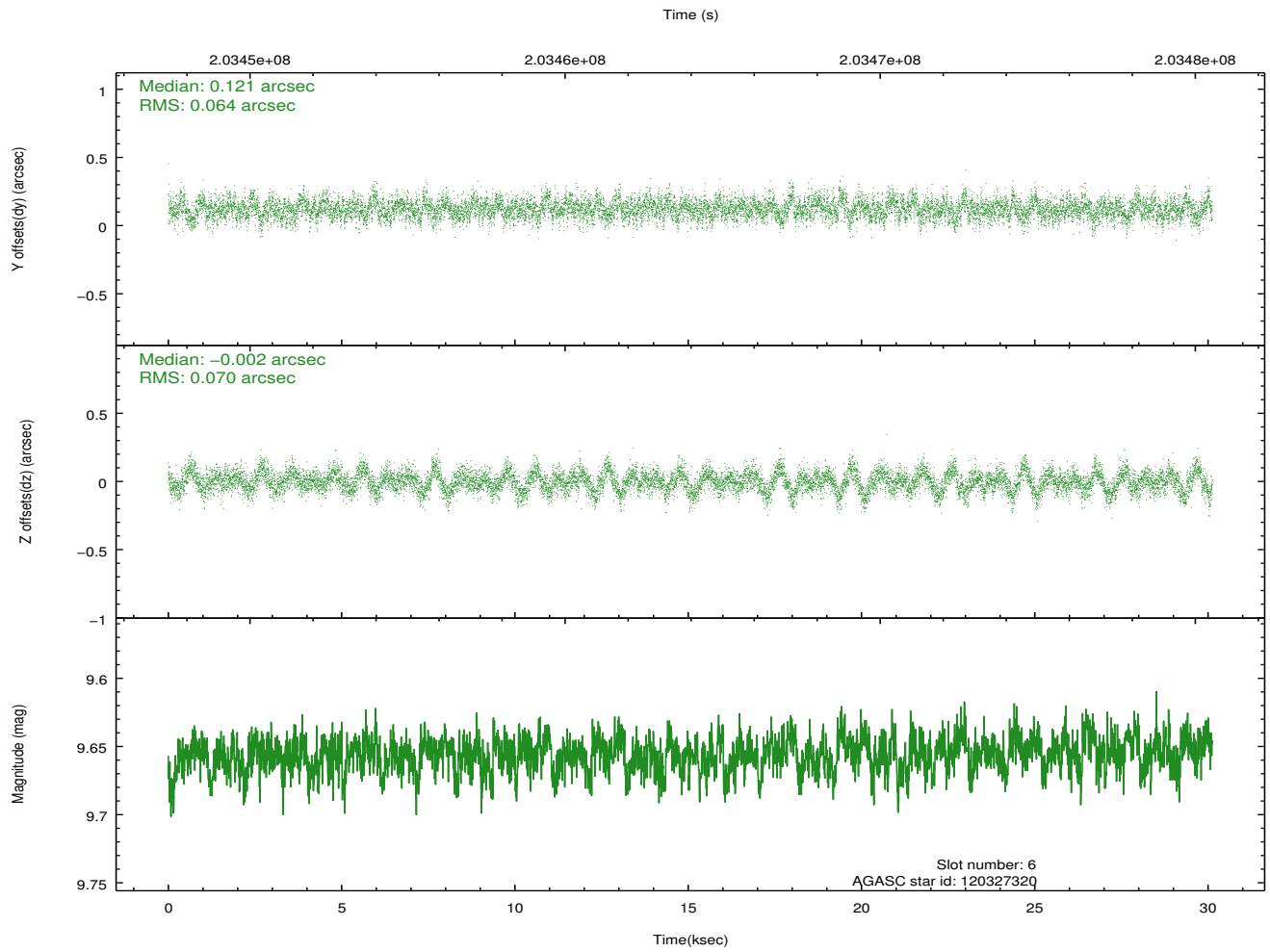
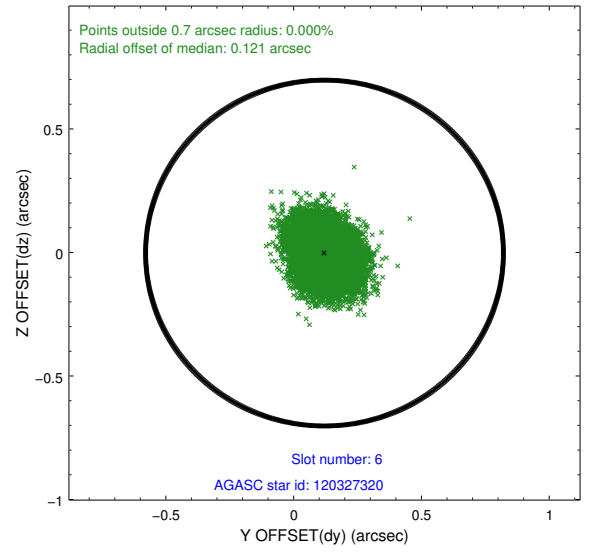
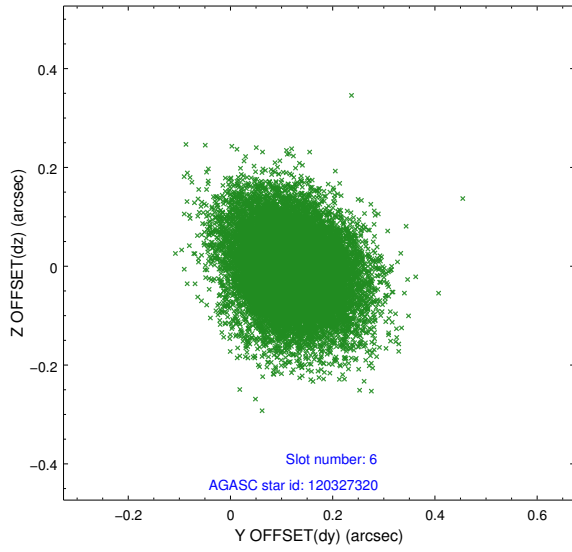
2.4.3 Slot 5



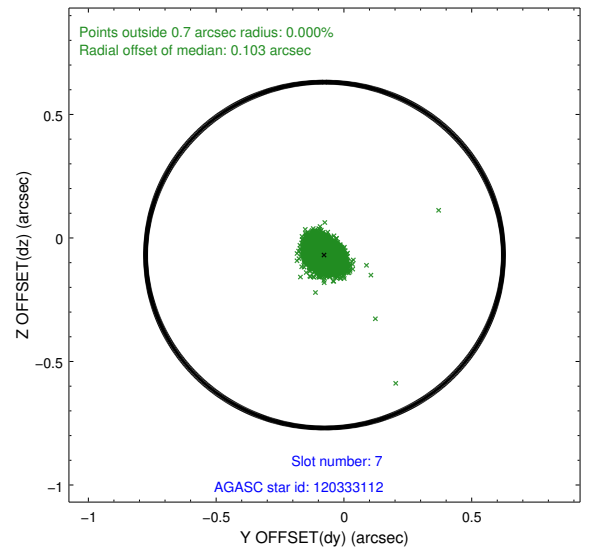
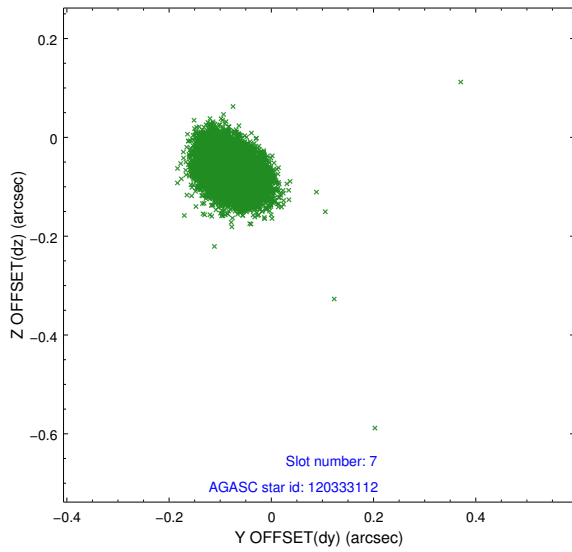
Time (s)



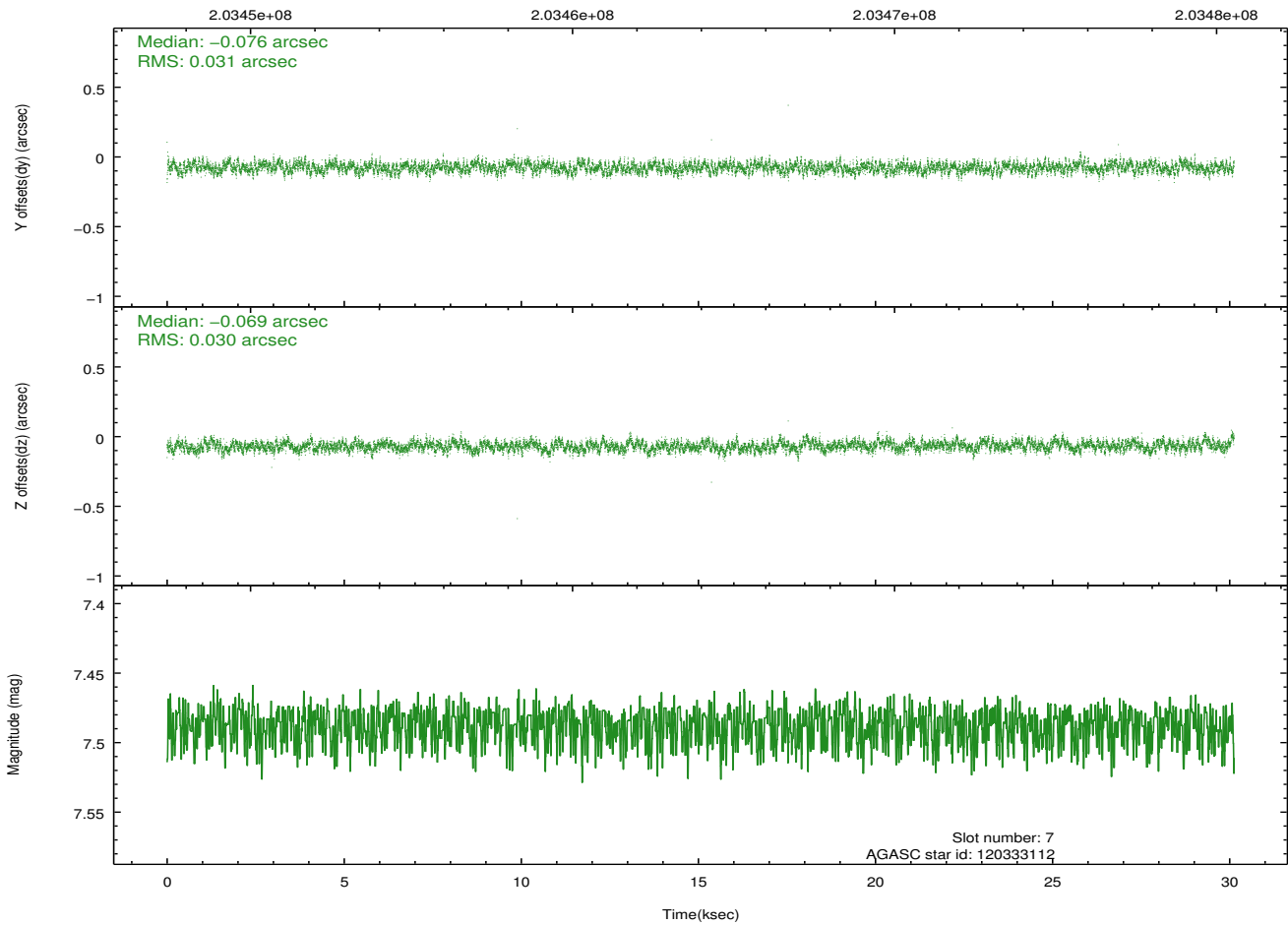
2.4.4 Slot 6



2.4.5 Slot 7

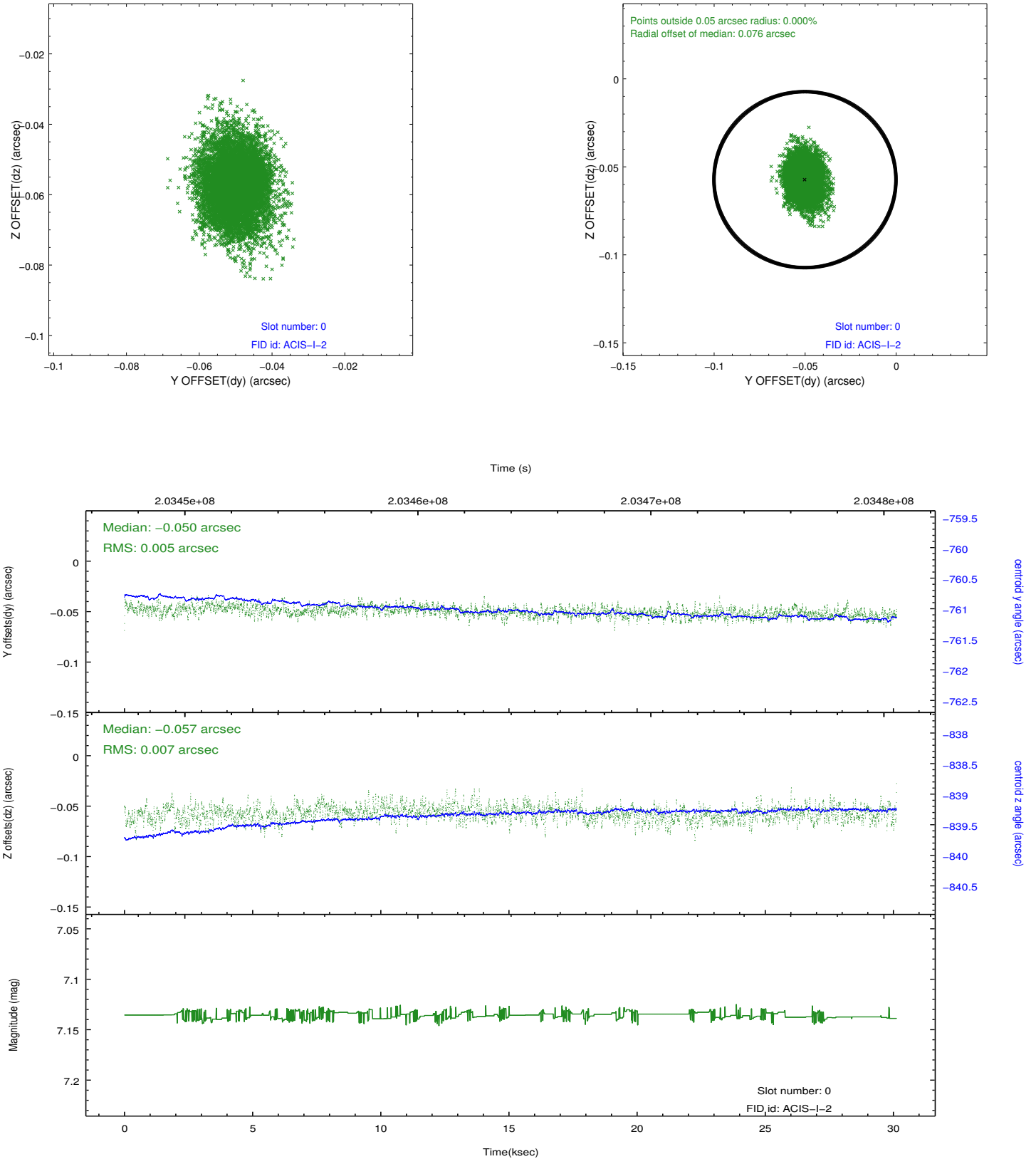


Time (s)

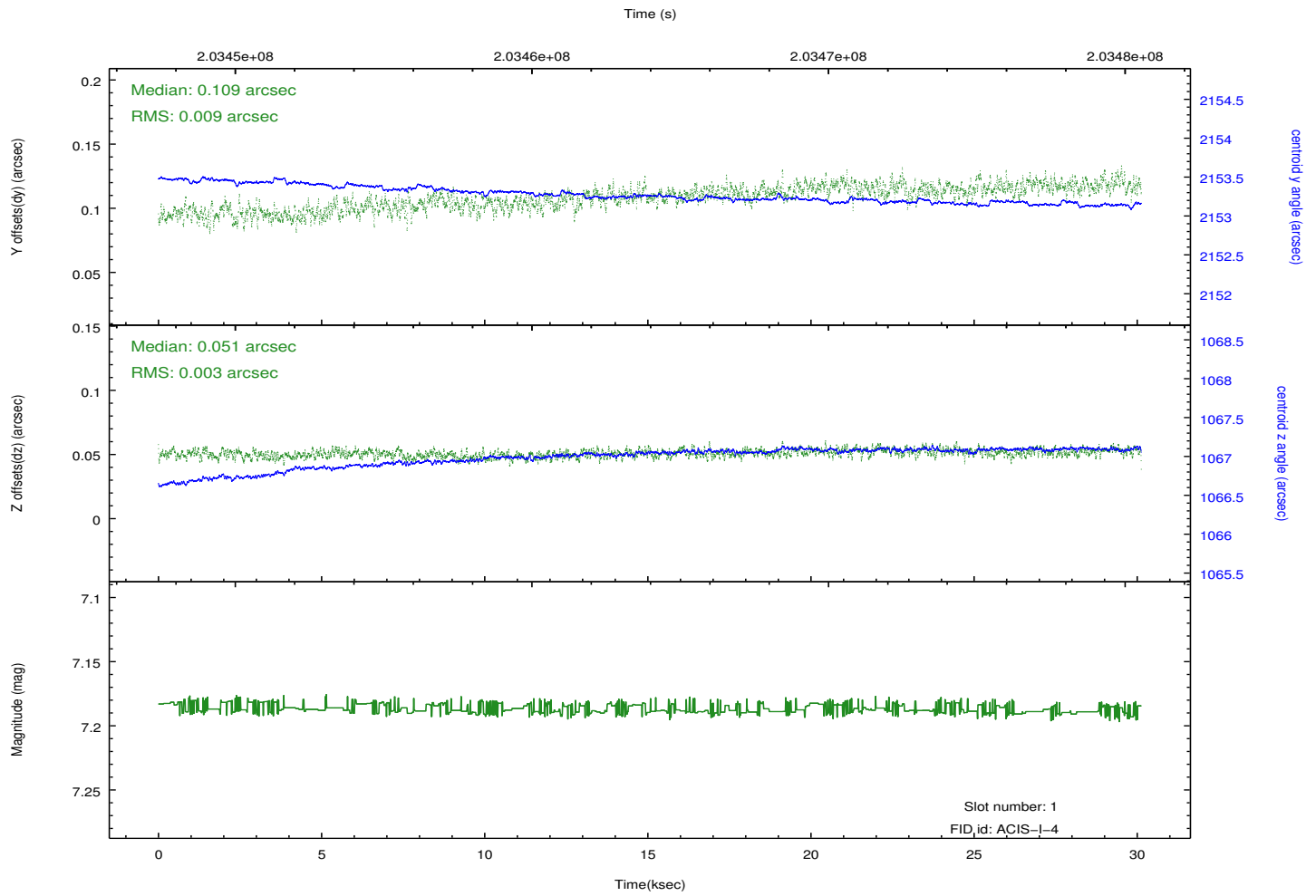
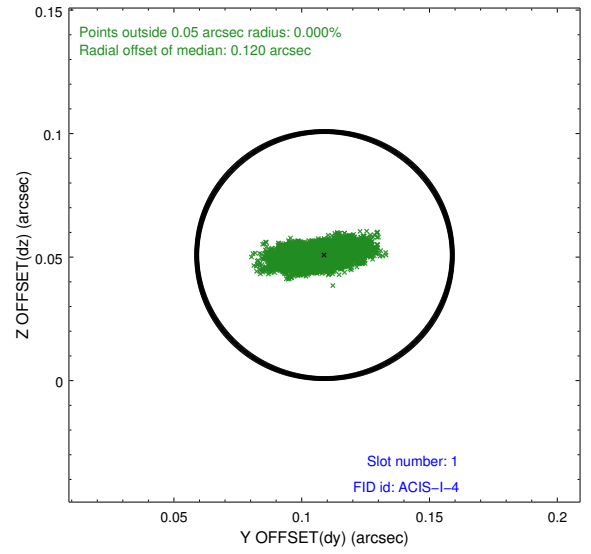
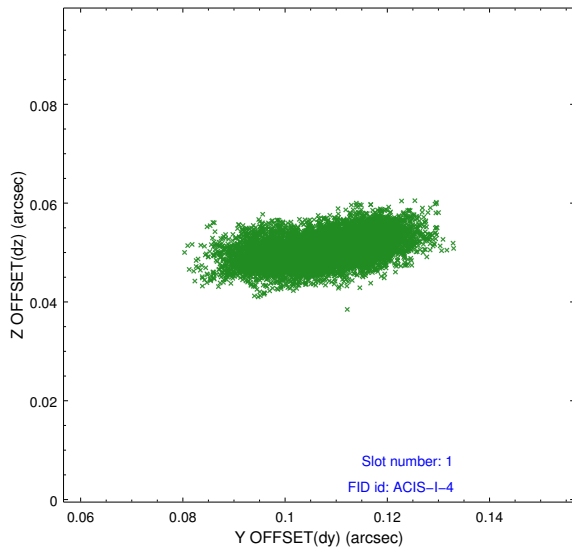


2.5 FID Slots

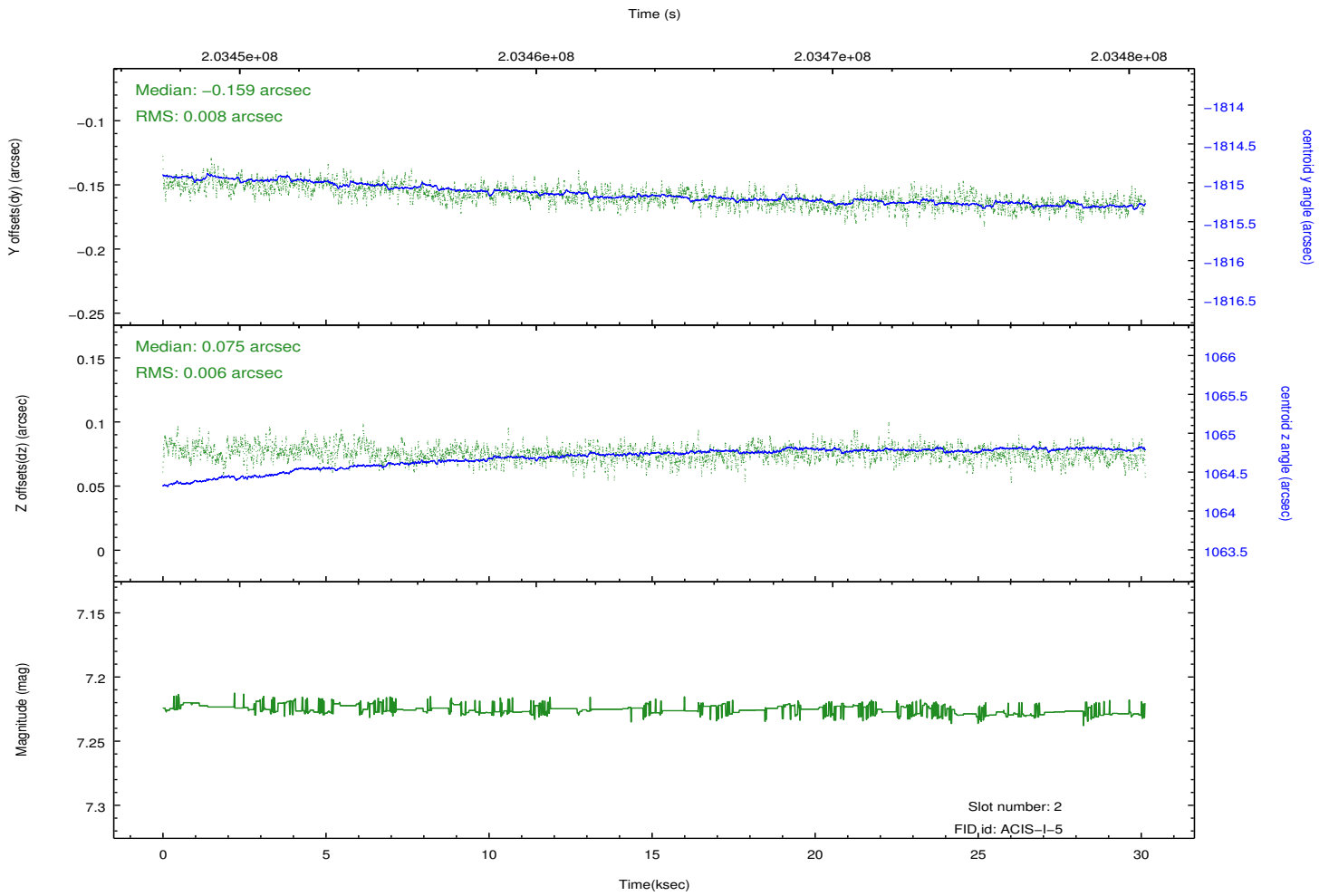
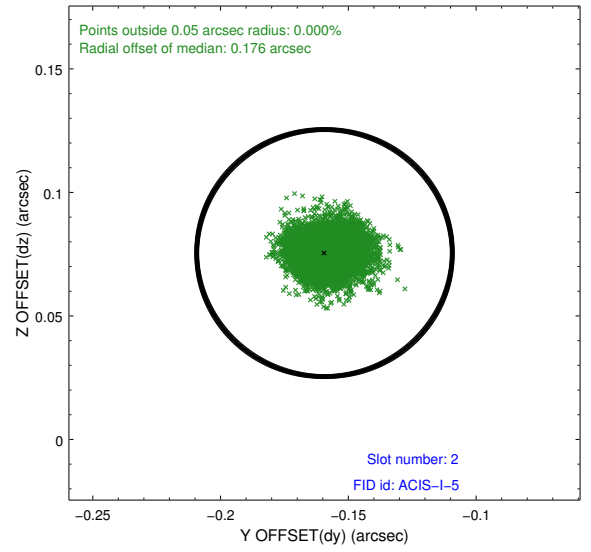
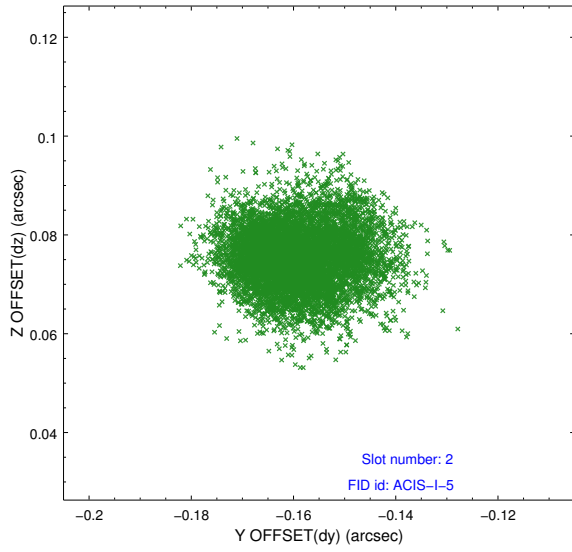
2.5.1 Slot 0



2.5.2 Slot 1



2.5.3 Slot 2



A Summary

A.1 Status

V&V Scientist	Beth Sundheim
V&V Date (YYYY-MM-DD)	2012.12.13
V&V Edition	1
V&V Disposition and Status	OK
V&V Charge Time	30.121

A.2 Comments