

V&V Reference Report

L2 ASCDS Version : 8.4.5

Observation 504 - L2 Version 4
Chandra X-Ray Center

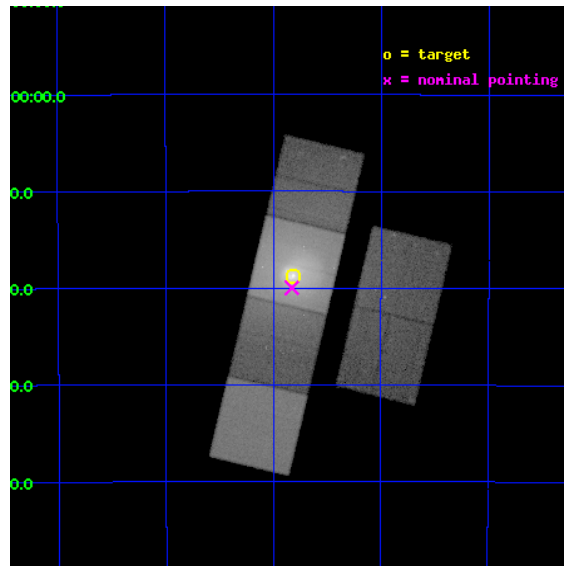
L2 Processing Date : Aug 28 2012

Contents

1	Front	2
2	OBI	3
2.1	OBI	3
2.1.1	Images	3
2.1.2	Bias	3
2.1.3	Parameters	4
2.1.4	Events	4
2.2	Compared Parameters	5
2.3	Aspect	6
2.4	Star Slots	9
2.4.1	Slot 3	9
2.4.2	Slot 4	10
2.4.3	Slot 5	11
2.4.4	Slot 6	12
2.4.5	Slot 7	13
2.5	FID Slots	14
2.5.1	Slot 0	14
2.5.2	Slot 1	15
2.5.3	Slot 2	16
A	Summary	17
A.1	Status	17
A.2	Comments	17

1 Front

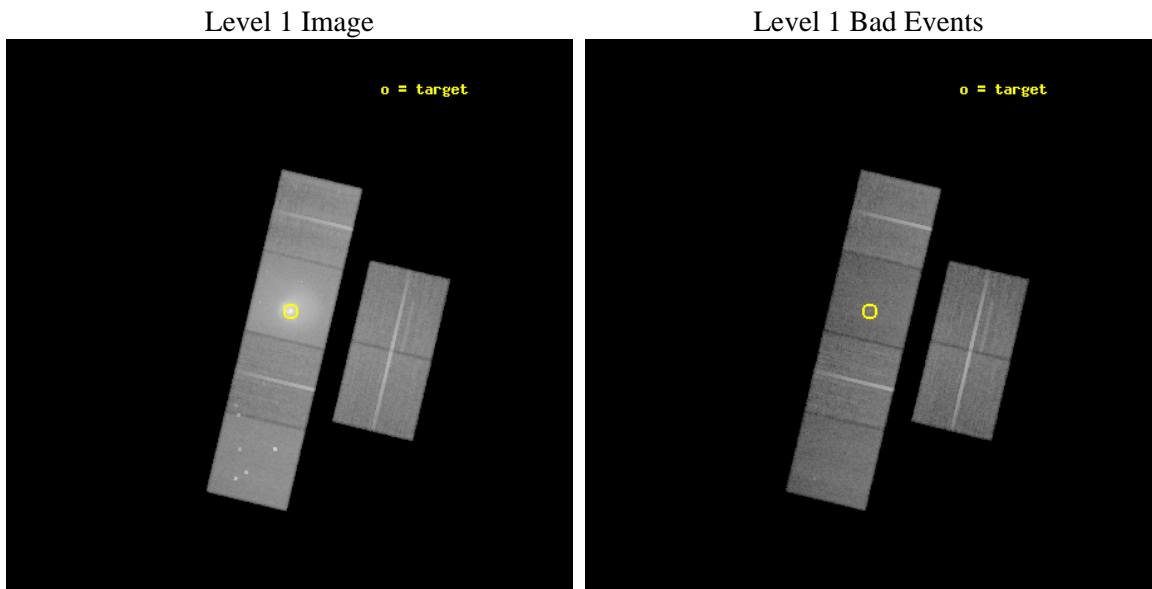
seq_num	800012	Sequence number
obs_id	504	Observation id
title	THE COOLING FLOW IN THE CENTAURUS CLUSTER	Proposal title
observer	Professor Andrew Fabian	Principal investigator
object	CEN CLUSTER	Source name
dtcycle	0	
cycle	P	events from which exps? Prim/Second/Both
ra_targ	192.202917	Observer's specified target RA [deg]
dec_targ	-41.312222	Observer's specified target Dec [deg]
ra_nom	192.20698966817	Nominal RA [deg]
dec_nom	-41.333069030236	Nominal Dec [deg]
roll_nom	283.38853859138	Nominal Roll [deg]
revision	4	Processing version of data
ontime	32160.000029936	Sum of GTIs [s]
livetime	31752.77074513	Livetime [s]
ontime2	32156.759059697	Sum of GTIs [s]
ontime3	32160.000029936	Sum of GTIs [s]
ontime5	32160.000029936	Sum of GTIs [s]
ontime6	32160.000029936	Sum of GTIs [s]
ontime7	32160.000029936	Sum of GTIs [s]
ontime8	32160.000029936	Sum of GTIs [s]
l2events	942533	Number of level 2 events



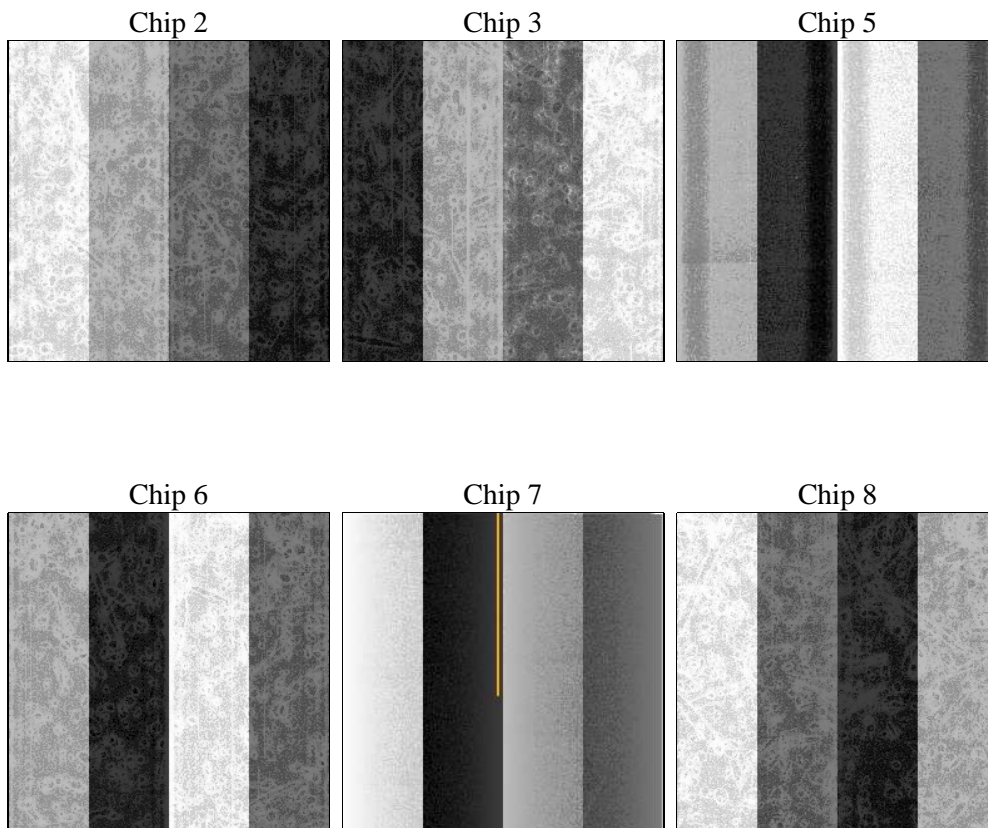
2 OBI

2.1 OBI

2.1.1 Images



2.1.2 Bias



2.1.3 Parameters

obi_num	0	Obi number	sched_exp_time	32000.000000	[s] Scheduled observation exposure time
ascdsver	8.4.5	Processing system revision	ontime	32160.000029936	Sum of GTIs [s]
caldbver	4.5.1.1	 	ontime2	32156.759059697	Sum of GTIs [s]
date	2012-08-28T05:22:16	Date and time of file creation	ontime3	32160.000029936	Sum of GTIs [s]
revision	4	Processing version of data	ontime5	32160.000029936	Sum of GTIs [s]
			ontime6	32160.000029936	Sum of GTIs [s]
			ontime7	32160.000029936	Sum of GTIs [s]
			ontime8	32160.000029936	Sum of GTIs [s]
			l1events	2135023	Number of level 1 events

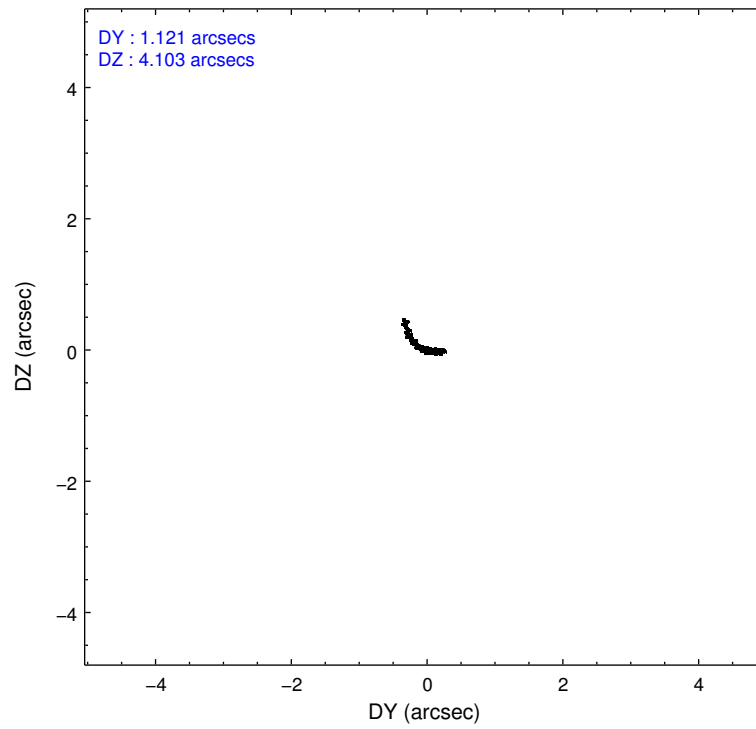
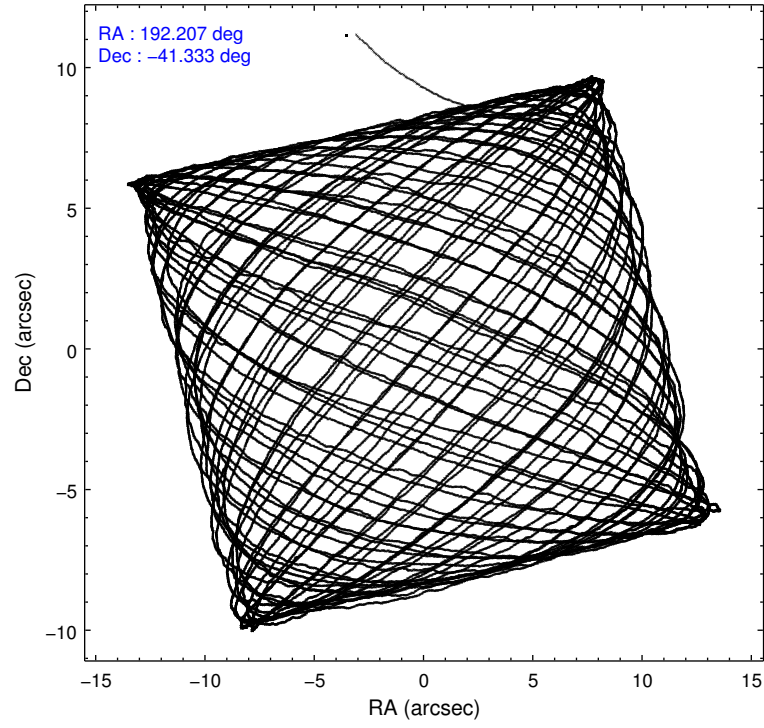
2.1.4 Events

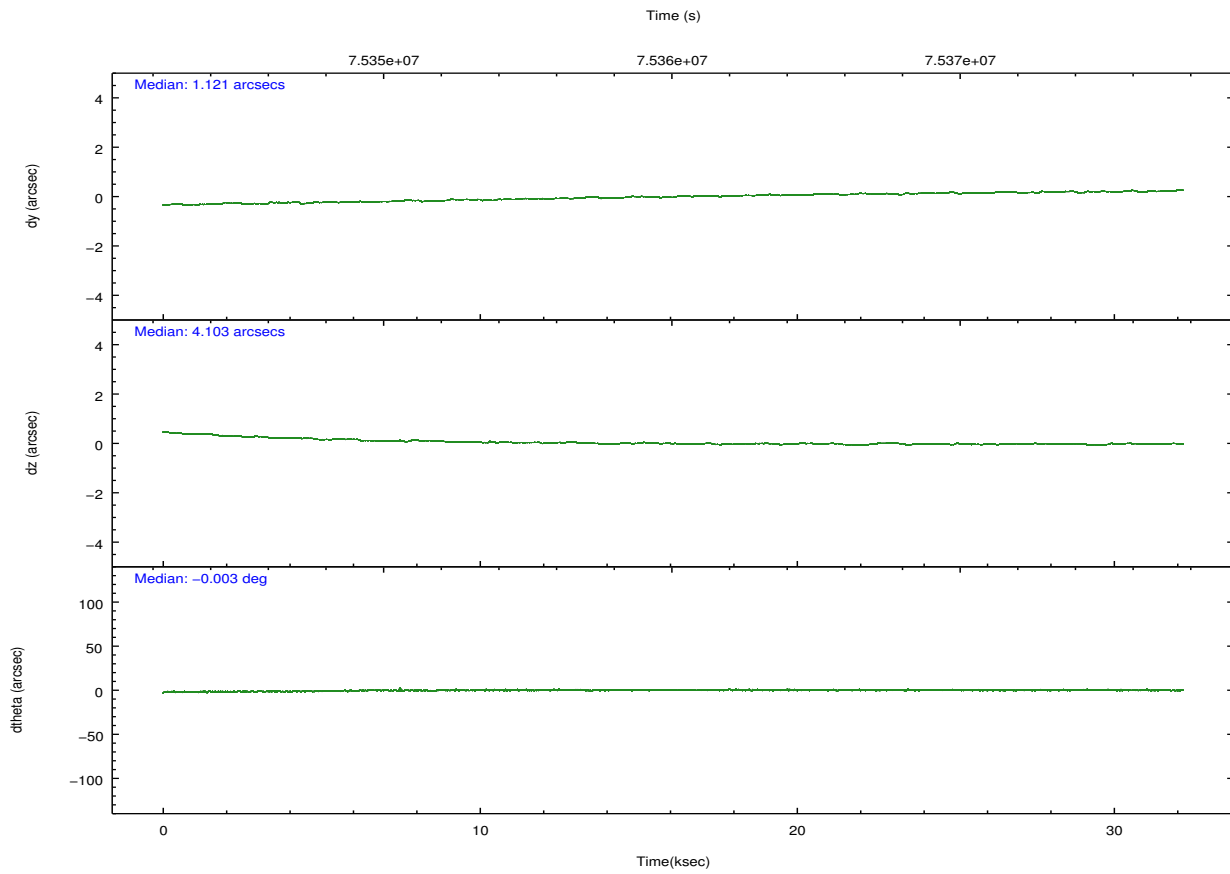
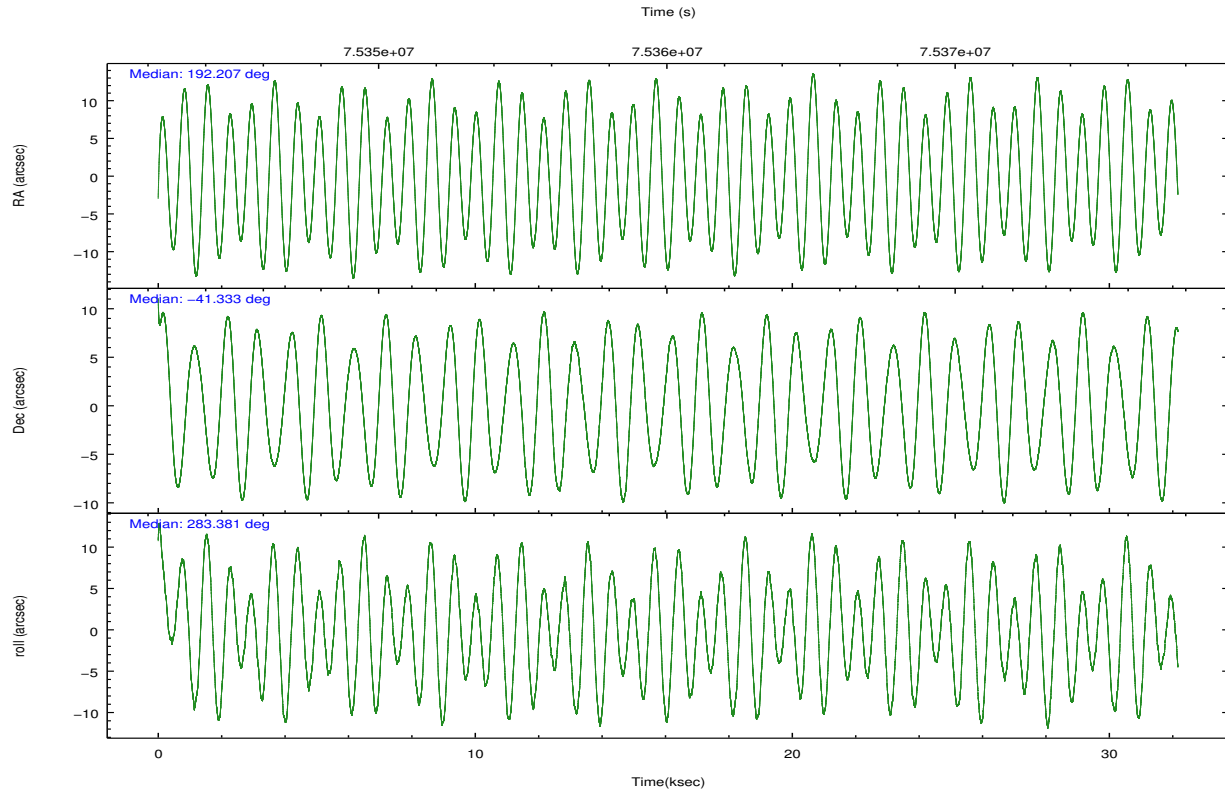
	ccd 2	ccd 3	ccd 5	ccd 6	ccd 7	ccd 8		ccd 2	ccd 3	ccd 5	ccd 6	ccd 7	ccd 8
level 1 events	240916	238428	310701	280729	739971	324278	grade 0 events	24722	31287	33705	57695	159189	57606
rejected events	199550	189431	150501	198859	151587	217317		10%	13%	10%	20%	21%	17%
rejected %	82%	79%	48%	70%	20%	67%	grade 1 events	152	192	588	263	432	294
								0%	0%	0%	0%	0%	0%
							grade 2 events	7033	7500	42739	10938	149754	16788
								2%	3%	13%	3%	20%	5%
							grade 3 events	2708	3001	8302	4062	67759	9505
								1%	1%	2%	1%	9%	2%
							grade 4 events	2751	2946	8066	4056	66819	8662
								1%	1%	2%	1%	9%	2%
							grade 5 events	6853	7095	21760	8223	26874	10439
								2%	2%	7%	2%	3%	3%
							grade 6 events	4573	4676	69526	6147	148883	15620
								1%	1%	22%	2%	20%	4%
							grade 7 events	192124	181731	126015	189345	120261	205364
								79%	76%	40%	67%	16%	63%

2.2 Compared Parameters

Parameter	Planned	Actual	Parameter	Planned	Actual
Instrument	ACIS	ACIS	Obspar format version number	7	7
Detector	ACIS-235678	ACIS-235678	Obspar file type	PREDICTED	ACTUAL
Grating	NONE	NONE	Obspar update status	NONE	UPDATED
Data mode	FAINT	FAINT	Number of optional ACIS chips dropped	0	0
Observation mode	POINTING	POINTING	On-chip summing requested	N	N
[deg] Pointing RA	192.181806	192.2069896681689	Subarray requested	NONE	NONE
[deg] Pointing Dec	-41.313206	-41.33306903023565	Alternating exposures requested	N	N
[deg] Pointing Roll	283.215273	283.3885385913761	[s] Primary exposure time	0.000000	3.2
[mm] SIM focus pos	-0.684267	-0.6828225247311905			
[mm] SIM defocus	0	0.001444936568705701			
[mm] SIM translation stage pos	-190.132523	-190.1425803651734			
[mm] SIM translation stage offset	0	0.01005778216563158			
[s] Observation start time (MET)	75344122.184000	75342797.700058			
Observation start date	2000-05-22T00:54:18	2000-05-22T00:33:17			
[s] Observation end time (MET)	75376122.184000	75376801.05130699			
Observation end date	2000-05-22T09:47:38	2000-05-22T10:00:01			
Read mode	TIMED	TIMED			

2.3 Aspect



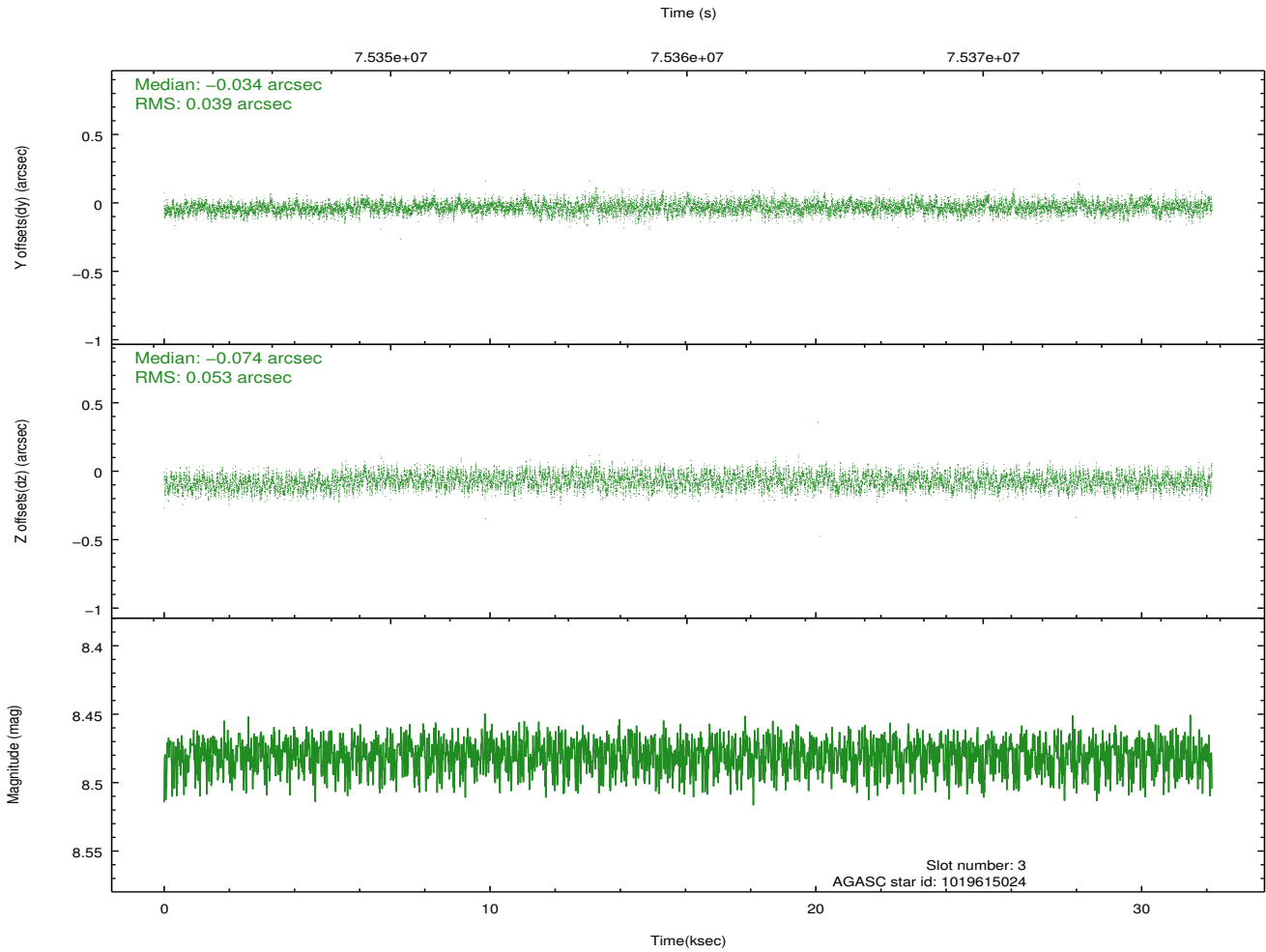
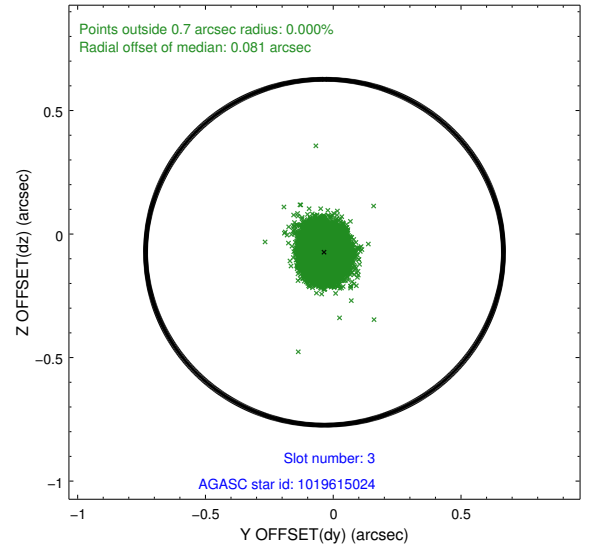
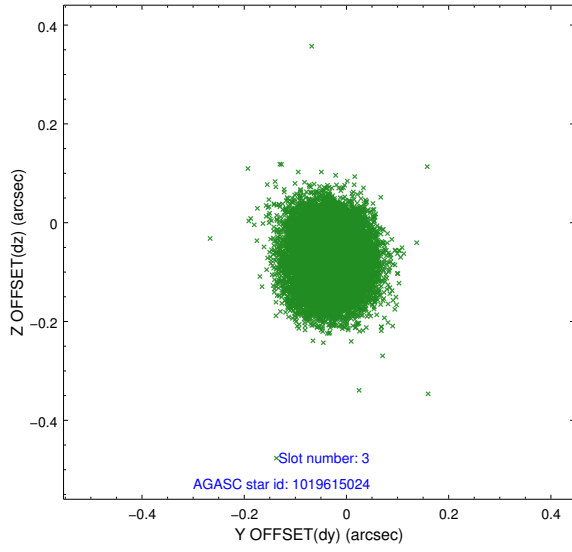


Slot Statistics

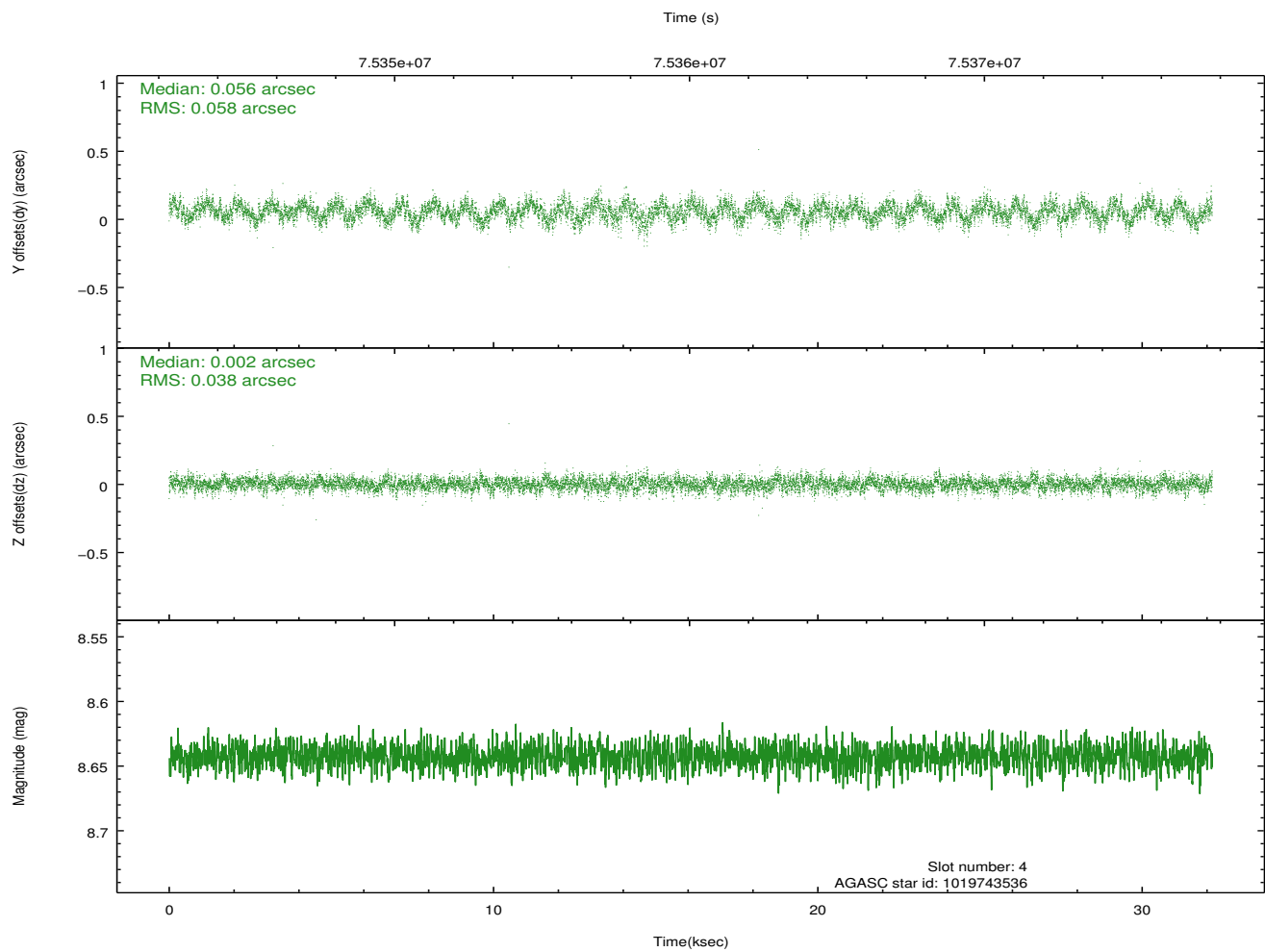
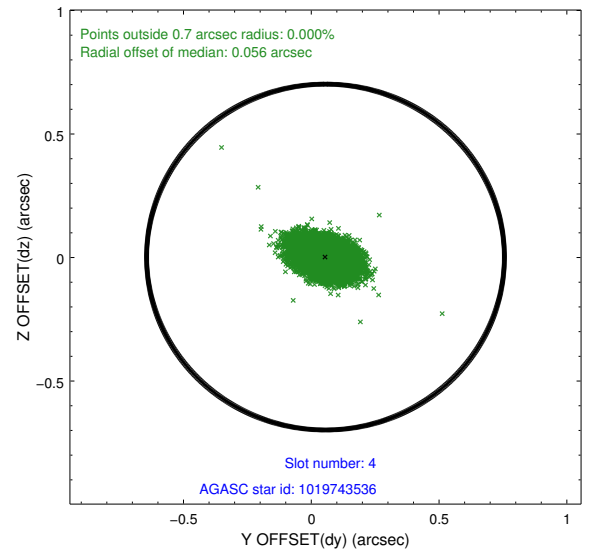
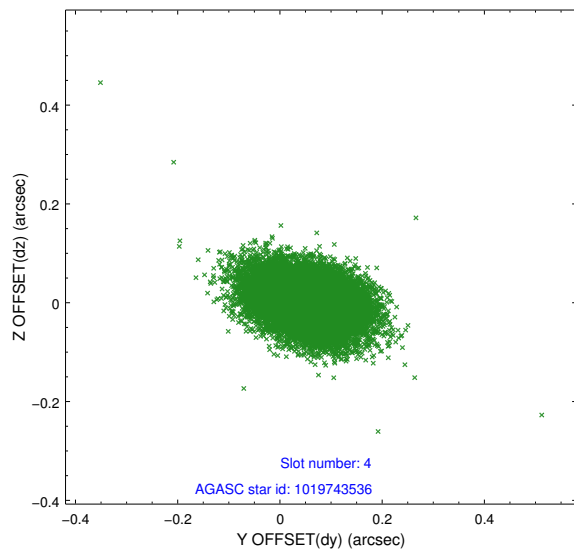
slot	status	id	mag	n_pts	med_dy	med_dz	dr1	dr2	ra	dec	mean_y	mean_z
0	FID	ACIS-S-2	7.11	7846	-0.015	-0.013	0.009	0.025	0.000000	0.000000	-753.73	-1725.20
1	FID	ACIS-S-4	7.21	7844	-0.008	0.010	0.008	0.046	0.000000	0.000000	2159.56	183.21
2	FID	ACIS-S-5	7.24	7846	-0.010	0.011	0.008	0.025	0.000000	0.000000	-1806.47	177.00
3	GUIDE	1019615024	8.48	15688	-0.034	-0.074	0.071	0.111	191.349086	-41.365736	-318.72	-2237.16
4	GUIDE	1019743536	8.64	15686	0.056	0.002	0.073	0.121	192.632057	-41.696442	1623.53	861.13
5	GUIDE	1019740808	8.80	15687	-0.037	0.080	0.082	0.131	192.766173	-41.251253	150.21	1588.55
6	GUIDE	1019220944	9.89	15679	-0.065	0.013	0.127	0.211	192.806424	-41.071482	-453.28	1846.81
7	GUIDE	1019753224	9.21	15677	0.083	-0.017	0.082	0.131	192.626894	-41.906362	2355.13	671.44

2.4 Star Slots

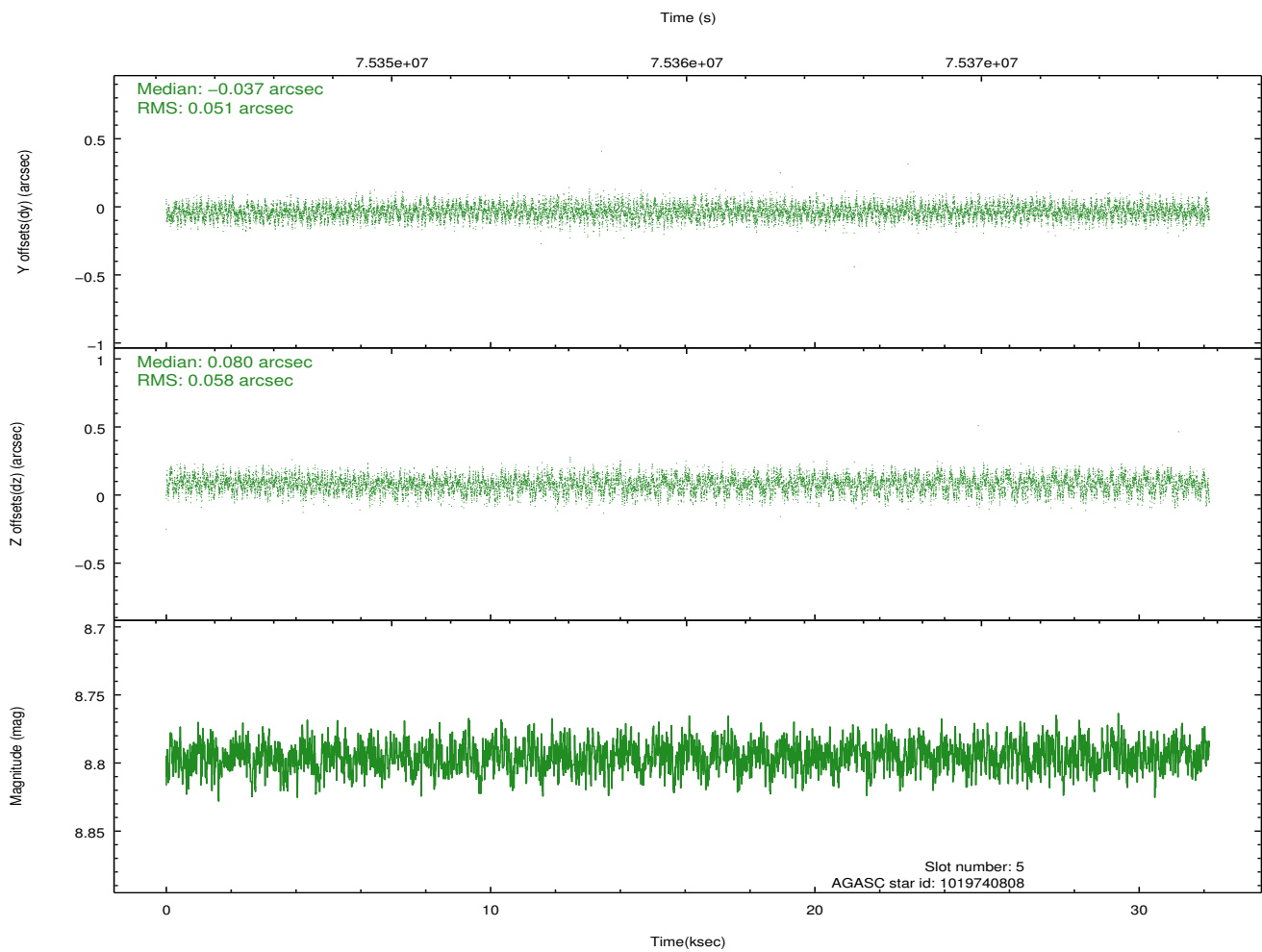
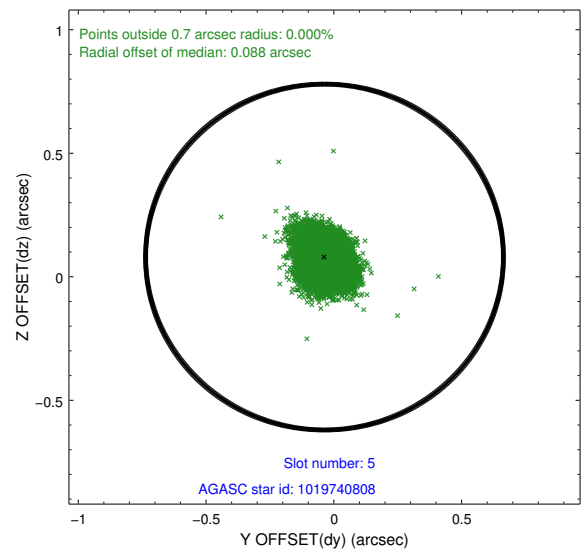
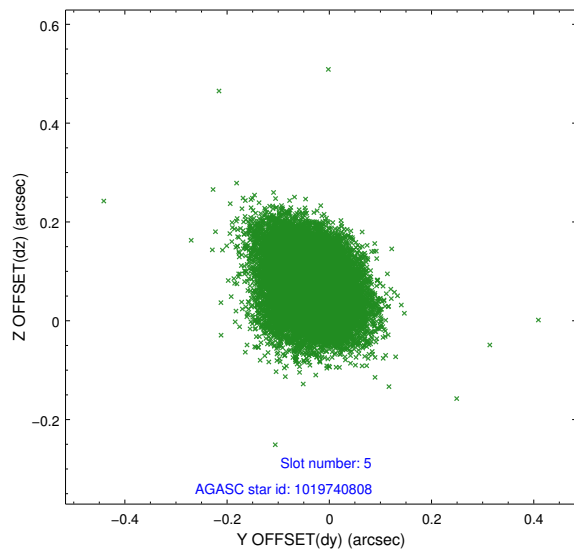
2.4.1 Slot 3



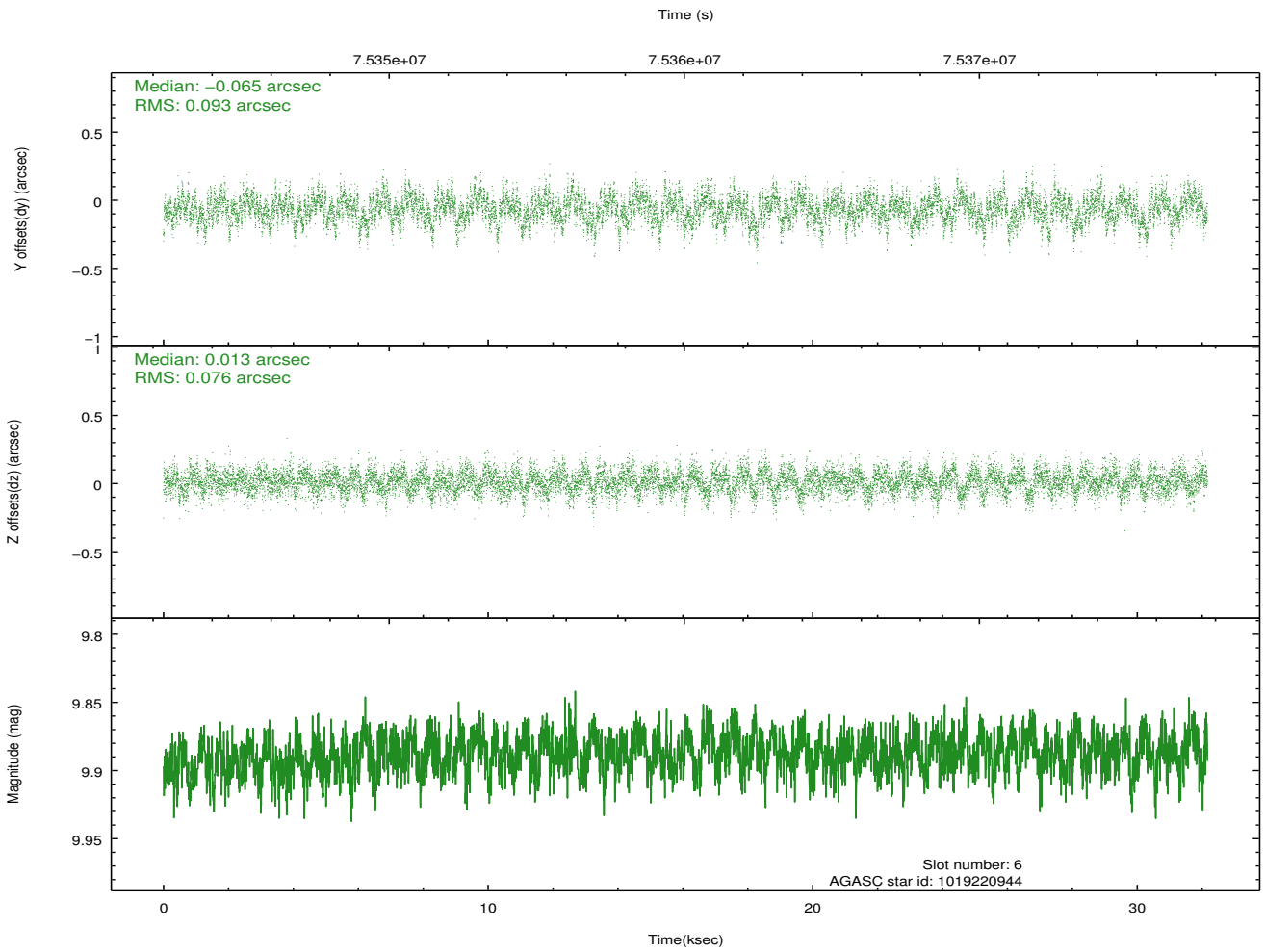
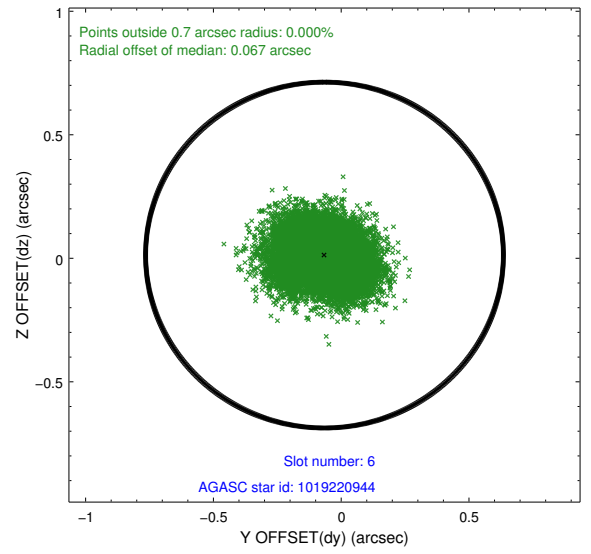
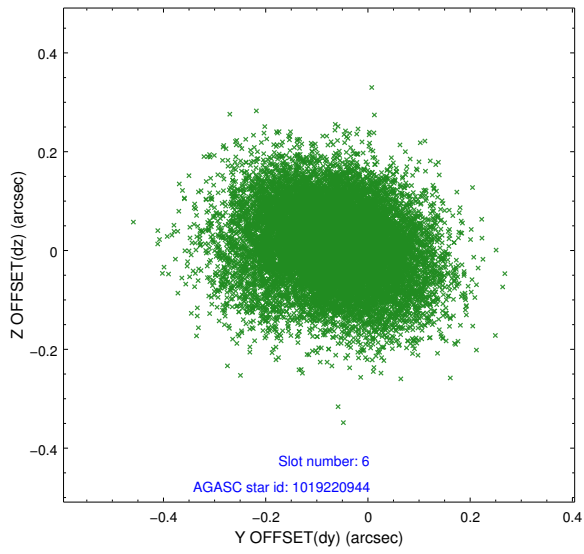
2.4.2 Slot 4



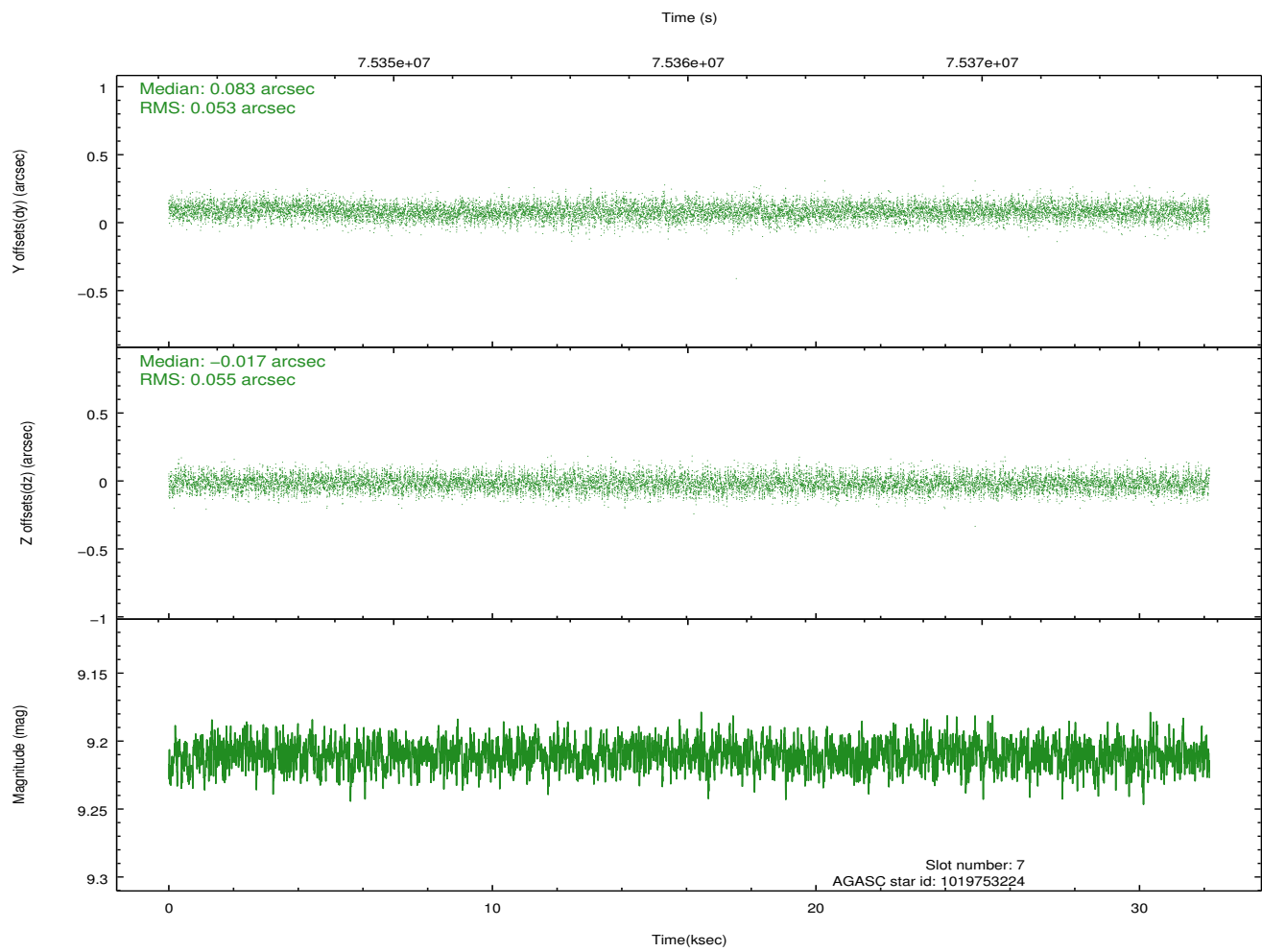
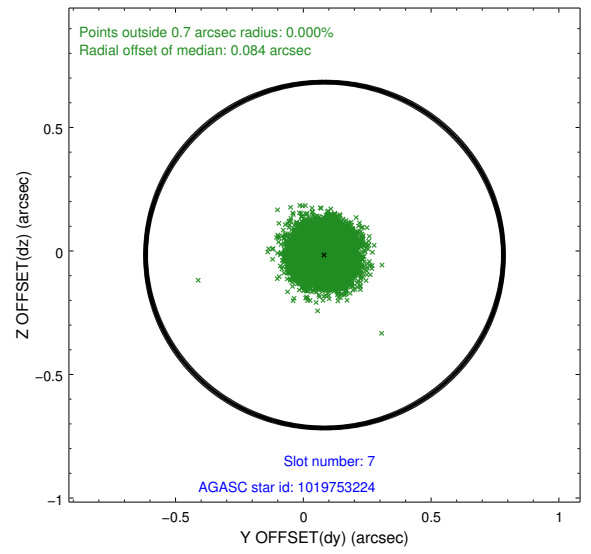
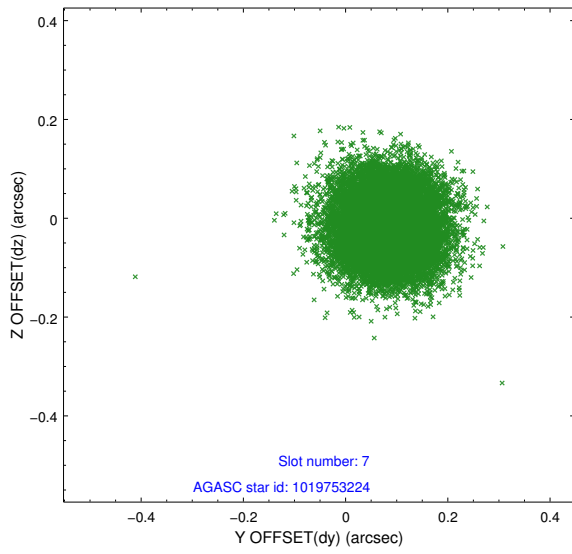
2.4.3 Slot 5



2.4.4 Slot 6

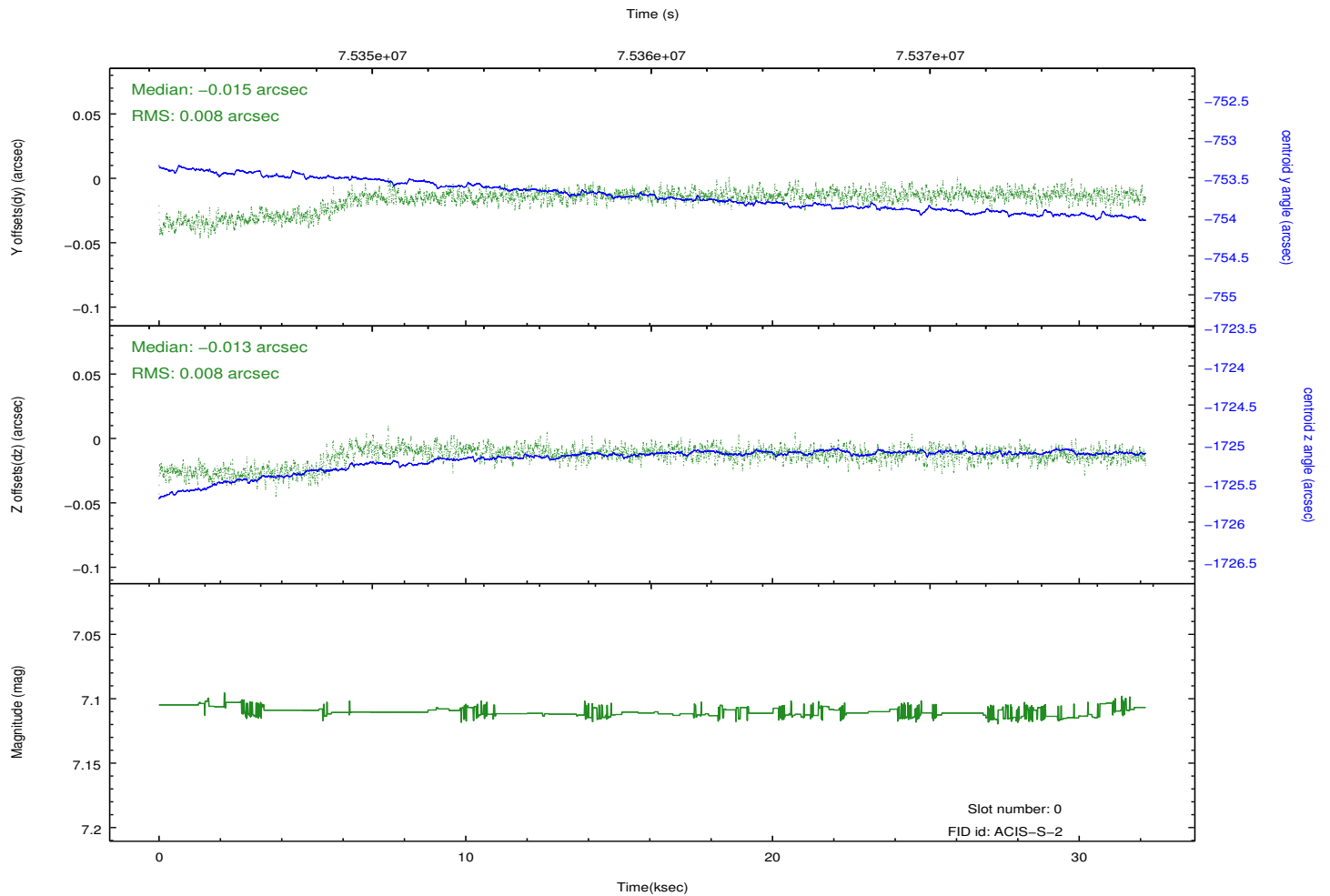
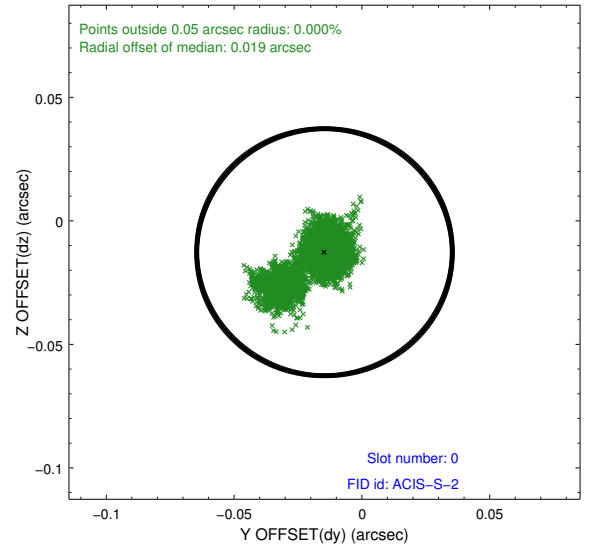
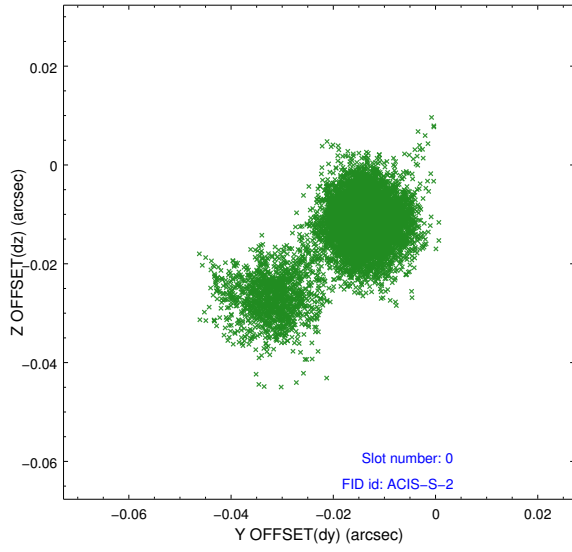


2.4.5 Slot 7

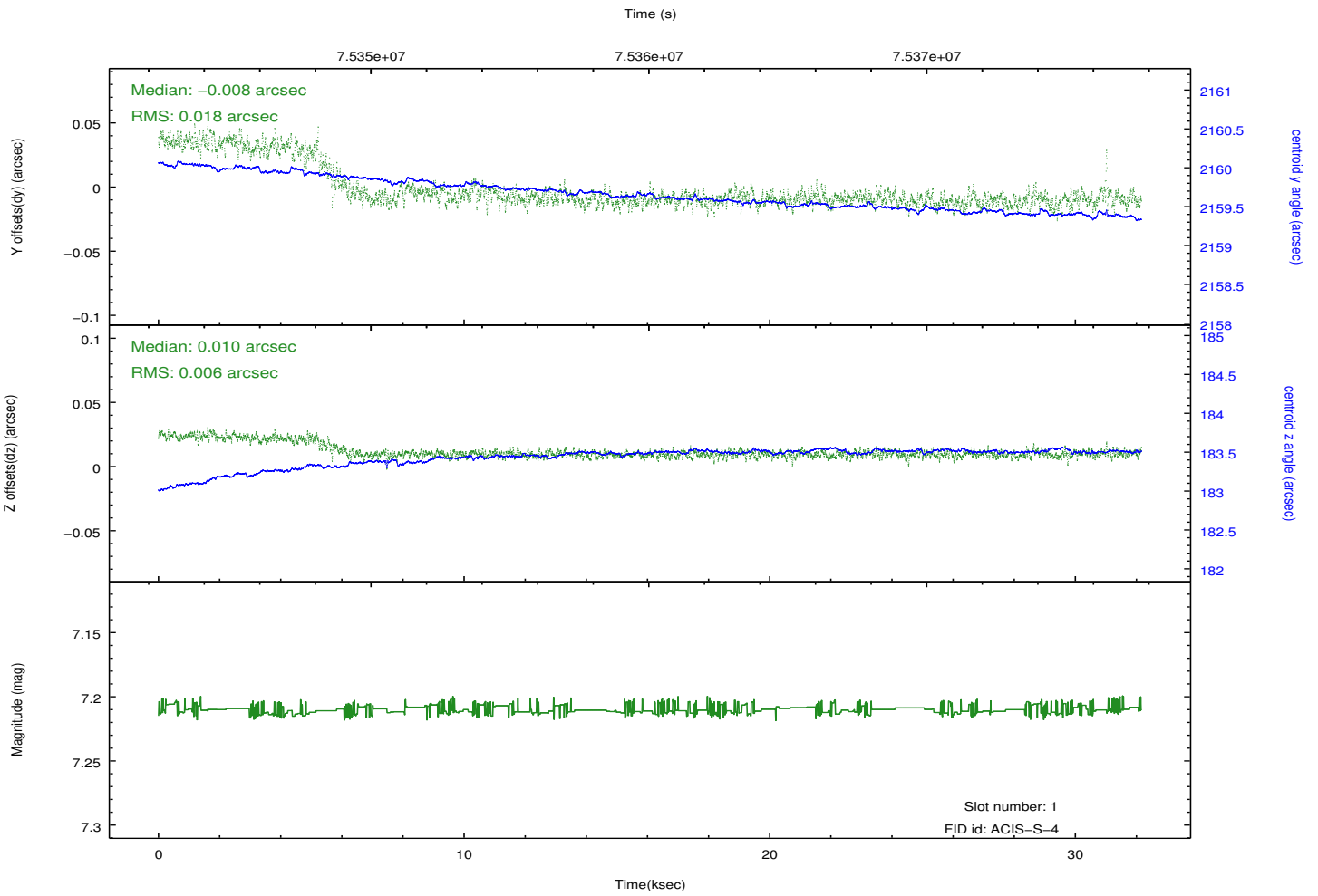
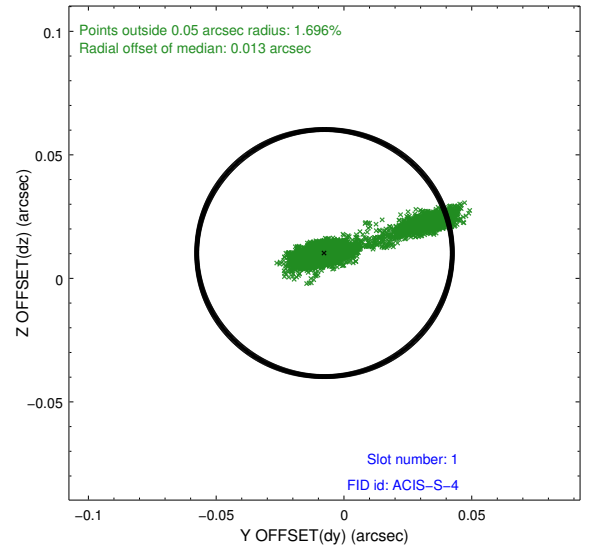
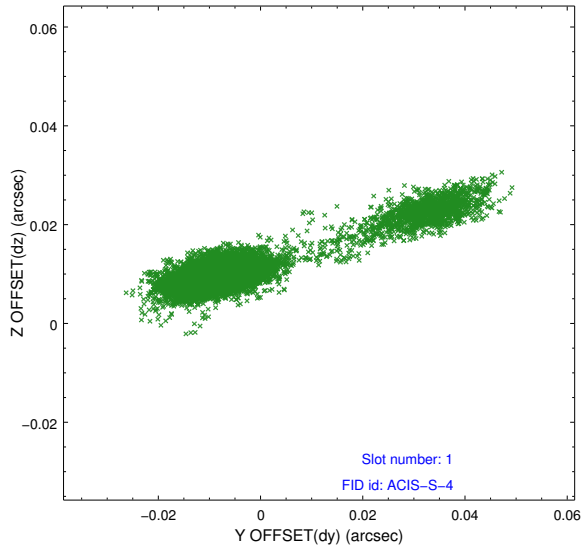


2.5 FID Slots

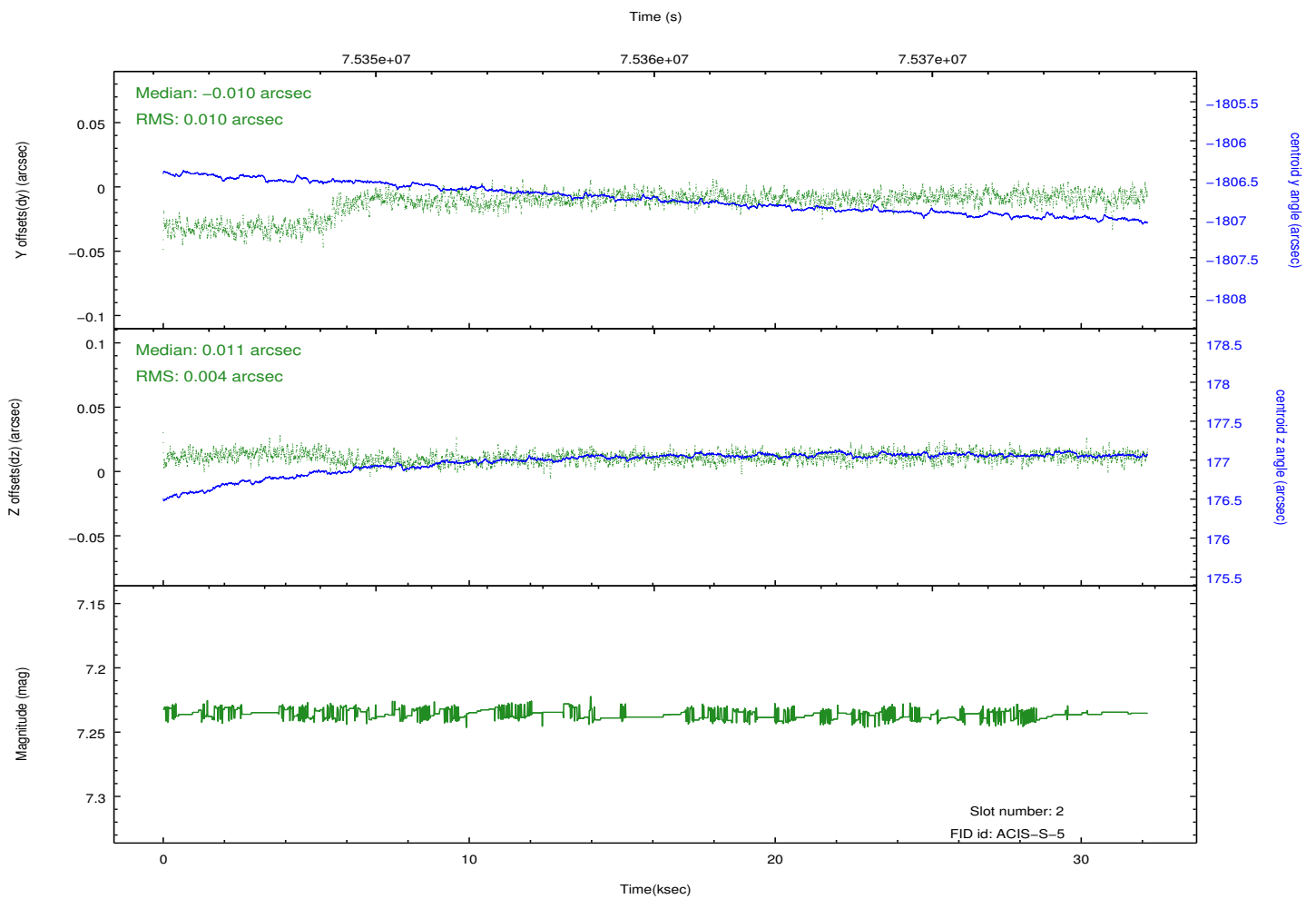
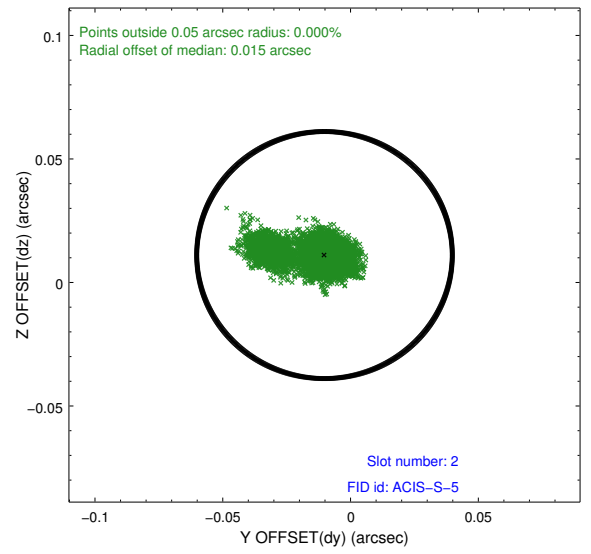
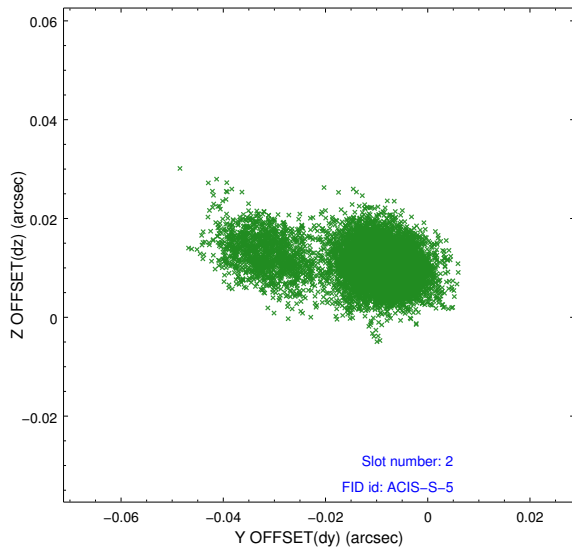
2.5.1 Slot 0



2.5.2 Slot 1



2.5.3 Slot 2



A Summary

A.1 Status

V&V Scientist	Jen Lauer
V&V Date (YYYY-MM-DD)	2012.08.31
V&V Edition	1
V&V Disposition and Status	OK
V&V Charge Time	32.124

A.2 Comments

Charge time for this ObsId remains at previous value of 32.124 ks although with the current processing the charge time would have been 32.16 ksec.