

V&V Reference Report

L2 ASCDS Version : 8.4.5

Observation 5294 - L2 Version 3
Chandra X-Ray Center

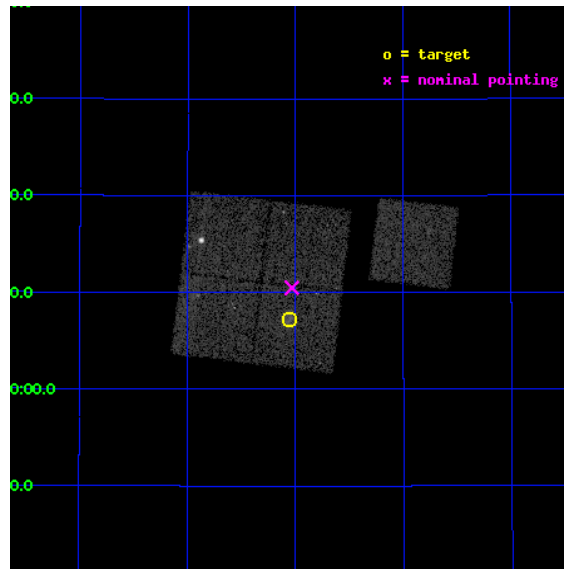
L2 Processing Date : Nov 9 2012

Contents

1	Front	2
2	OBI	3
2.1	OBI	3
2.1.1	Images	3
2.1.2	Bias	3
2.1.3	Parameters	4
2.1.4	Events	4
2.2	Compared Parameters	5
2.3	Aspect	6
2.4	Star Slots	9
2.4.1	Slot 3	9
2.4.2	Slot 4	10
2.4.3	Slot 5	11
2.4.4	Slot 6	12
2.4.5	Slot 7	13
2.5	FID Slots	14
2.5.1	Slot 0	14
2.5.2	Slot 1	15
2.5.3	Slot 2	16
A	Summary	17
A.1	Status	17
A.2	Comments	17

1 Front

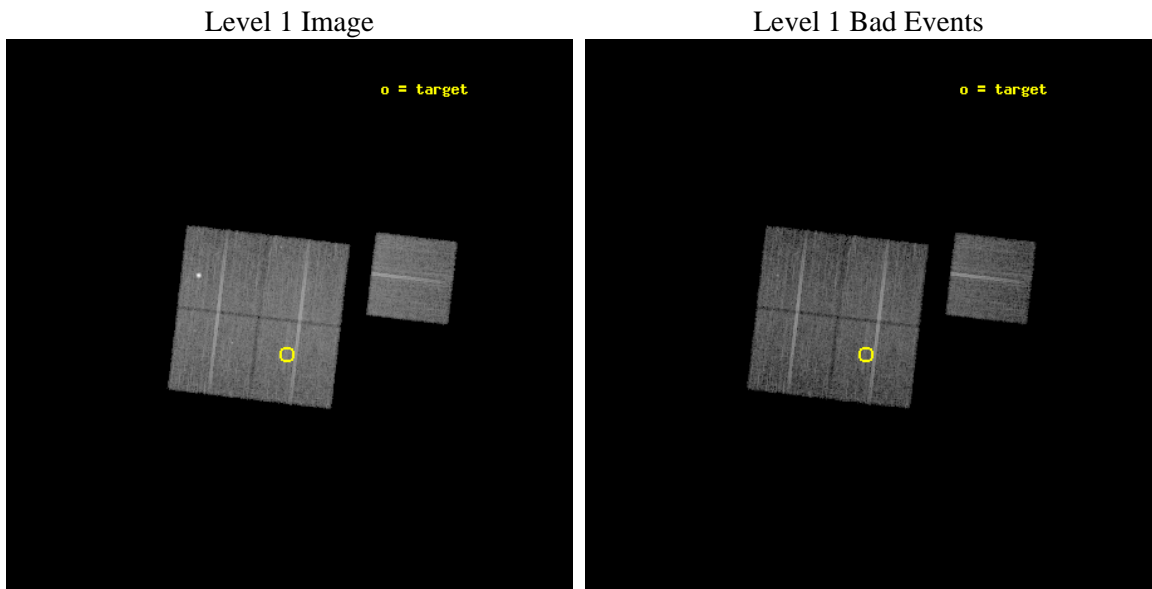
seq_num	800381	Sequence number
obs_id	5294	Observation id
title	Chandra snapshot survey of 10 distant clusters of galaxies	Proposa
observer	Dr. Stephen Murray	Principal investigator
object	CL0956+4107	Source name
dtcycle	0	
cycle	P	events from which exps? Prim/Second/Both
ra_targ	149.014167	Observer's specified target RA [deg]
dec_targ	41.120556	Observer's specified target Dec [deg]
ra_nom	149.00827620808	Nominal RA [deg]
dec_nom	41.174700194022	Nominal Dec [deg]
roll_nom	96.756557894495	Nominal Roll [deg]
revision	3	Processing version of data
ontime	17570.799966186	Sum of GTIs [s]
livetime	17341.224529193	Livetime [s]
ontime0	17570.799966186	Sum of GTIs [s]
ontime1	17570.799966186	Sum of GTIs [s]
ontime2	17567.658995926	Sum of GTIs [s]
ontime3	17570.799966186	Sum of GTIs [s]
ontime6	17570.799966186	Sum of GTIs [s]
l2events	49116	Number of level 2 events



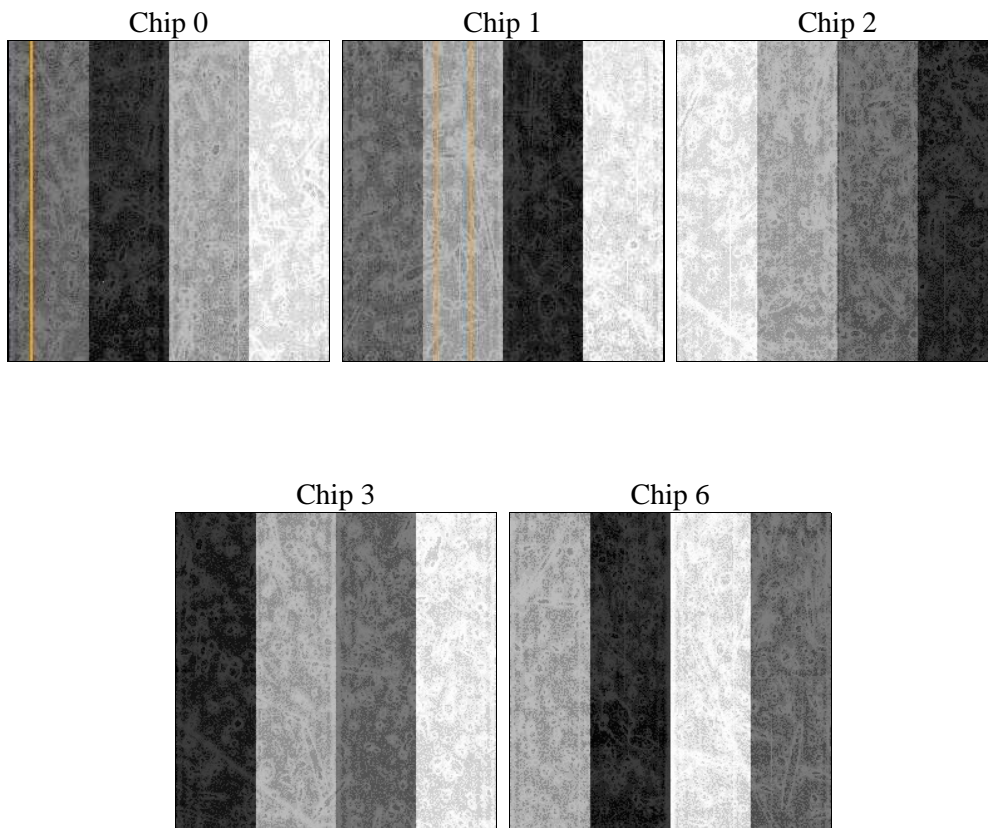
2 OBI

2.1 OBI

2.1.1 Images



2.1.2 Bias



2.1.3 Parameters

obi_num	0	Obi number	sched_exp_time	17798.779000	[s] Scheduled observation exposure time
ascdsver	8.4.5	Processing system revision	ontime	17570.799966186	Sum of GTIs [s]
caldbver	4.5.2	 	ontime0	17570.799966186	Sum of GTIs [s]
date	2012-11-09T15:30:01	Date and time of file creation	ontime1	17570.799966186	Sum of GTIs [s]
revision	3	Processing version of data	ontime2	17567.658995926	Sum of GTIs [s]
			ontime3	17570.799966186	Sum of GTIs [s]
			ontime6	17570.799966186	Sum of GTIs [s]
			l1events	451630	Number of level 1 events

2.1.4 Events

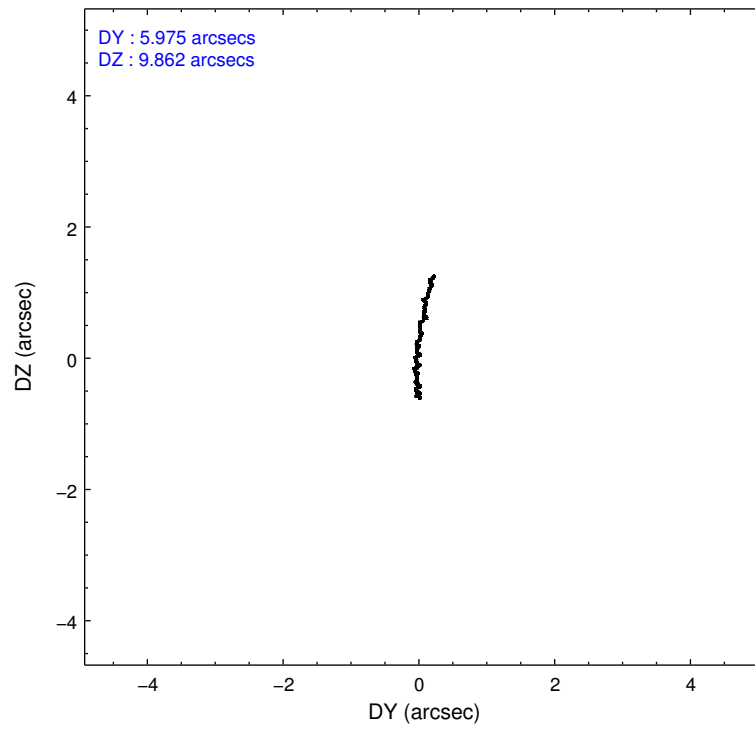
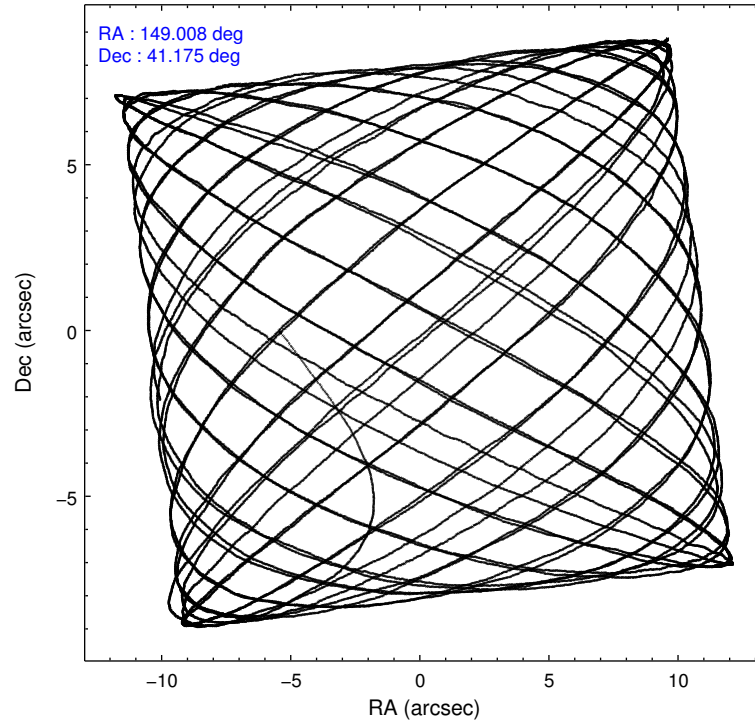
	ccd 0	ccd 1	ccd 2	ccd 3	ccd 6
level 1 events	93442	84537	96190	88777	88684
rejected events	73894	73948	87030	79703	79343
rejected %	79%	87%	90%	89%	89%

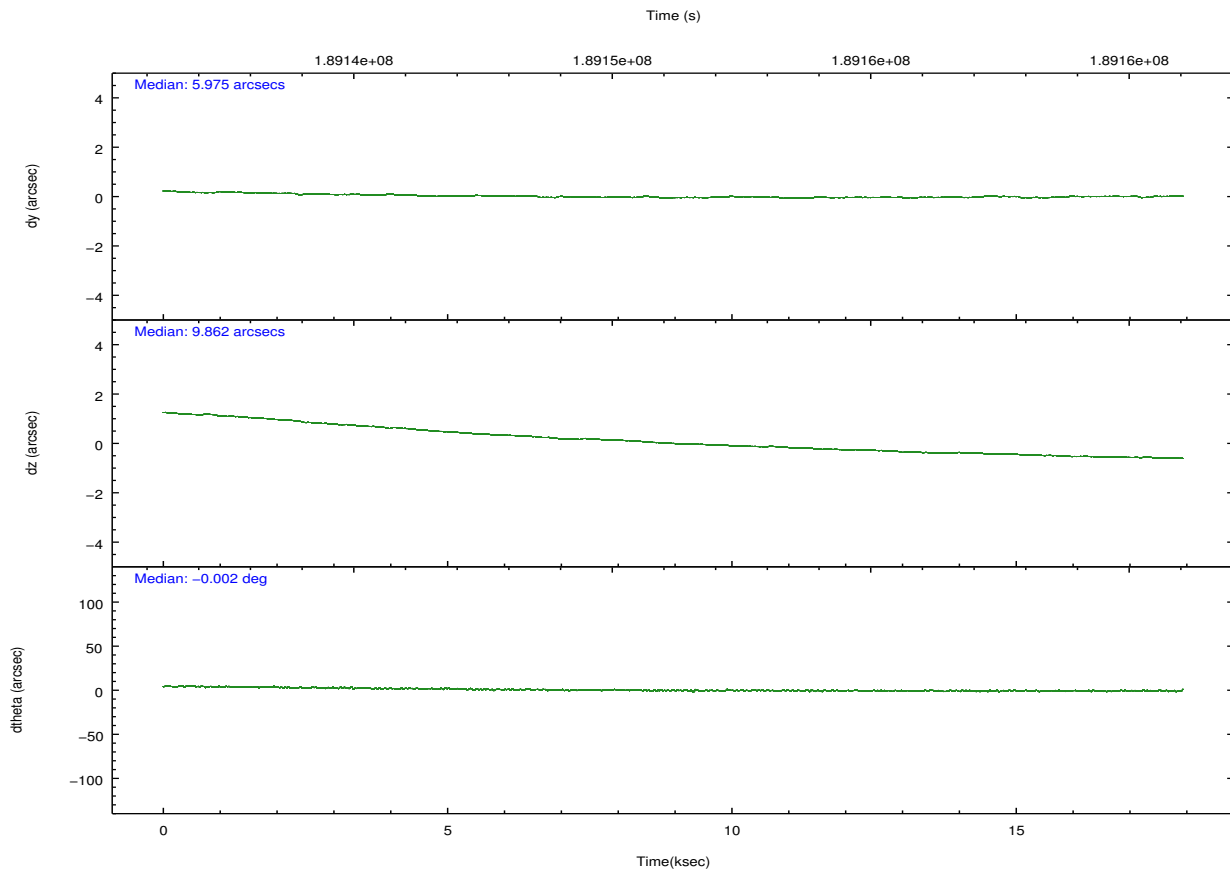
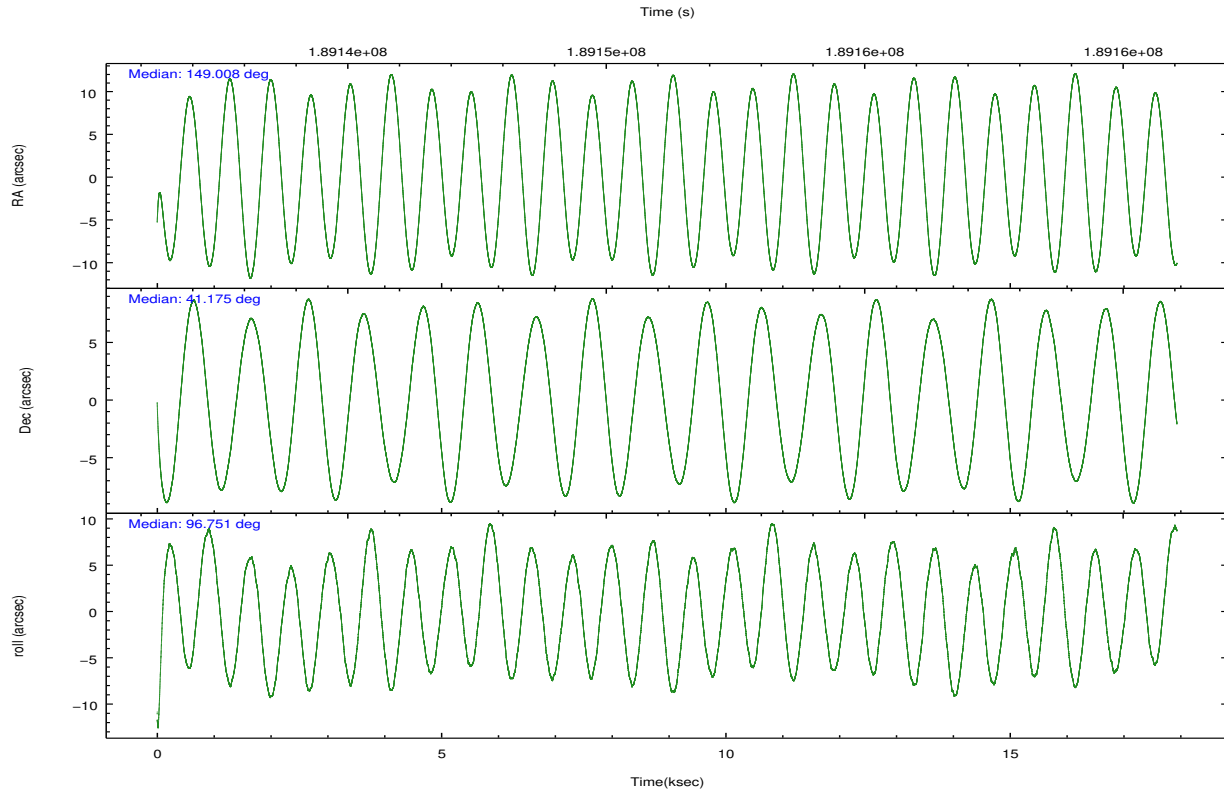
	ccd 0	ccd 1	ccd 2	ccd 3	ccd 6
grade 0 events	11983	3959	3385	3432	3176
	12%	4%	3%	3%	3%
grade 1 events	120	41	41	40	29
	0%	0%	0%	0%	0%
grade 2 events	3085	2206	2135	1870	1965
	3%	2%	2%	2%	2%
grade 3 events	1299	1224	1017	1061	1077
	1%	1%	1%	1%	1%
grade 4 events	1200	1111	971	970	1025
	1%	1%	1%	1%	1%
grade 5 events	3358	3464	3139	3617	3572
	3%	4%	3%	4%	4%
grade 6 events	1985	2093	1653	1744	2102
	2%	2%	1%	1%	2%
grade 7 events	70412	70439	83849	76043	75738
	75%	83%	87%	85%	85%

2.2 Compared Parameters

Parameter	Planned	Actual	Parameter	Planned	Actual
Instrument	ACIS	ACIS	Obspar format version number	7	7
Detector	ACIS-01236	ACIS-01236	Obspar file type	PREDICTED	ACTUAL
Grating	NONE	NONE	Obspar update status	NONE	UPDATED
Data mode	VFAINT	VFAINT	Number of optional ACIS chips dropped	0	0
Observation mode	POINTING	POINTING	On-chip summing requested	N	N
[deg] Pointing RA	149.030196	149.0082762080762	Subarray requested	NONE	NONE
[deg] Pointing Dec	41.152809	41.17470019402243	Alternating exposures requested	N	N
[deg] Pointing Roll	96.533457	96.75655789449519	[s] Primary exposure time	0.000000	3.1
[mm] SIM focus pos	-0.782348	-0.7809083437167272			
[mm] SIM defocus	0	0.001439871863259334			
[mm] SIM translation stage pos	-225.840463	-225.848371962627			
[mm] SIM translation stage offset	-7.752	-7.744081040302689			
[s] Observation start time (MET)	189142340.184000	189141204.06594			
Observation start date	2003-12-30T03:31:16	2003-12-30T03:13:24			
[s] Observation end time (MET)	189160139.184000	189160453.56678			
Observation end date	2003-12-30T08:27:55	2003-12-30T08:34:13			
Read mode	TIMED	TIMED			

2.3 Aspect



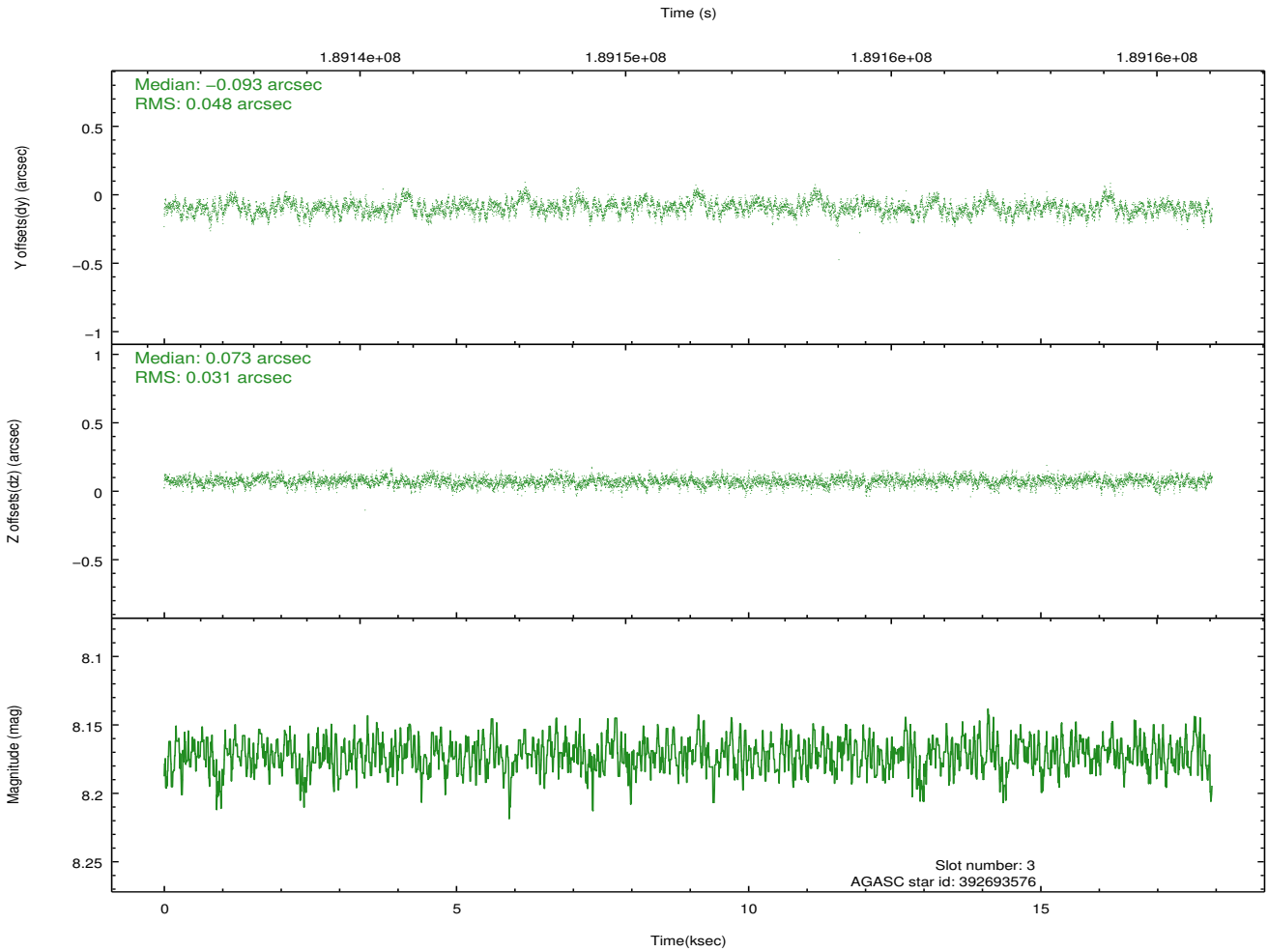
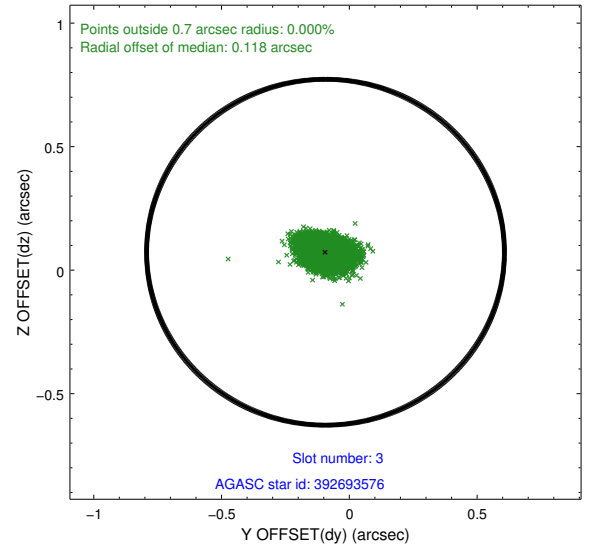
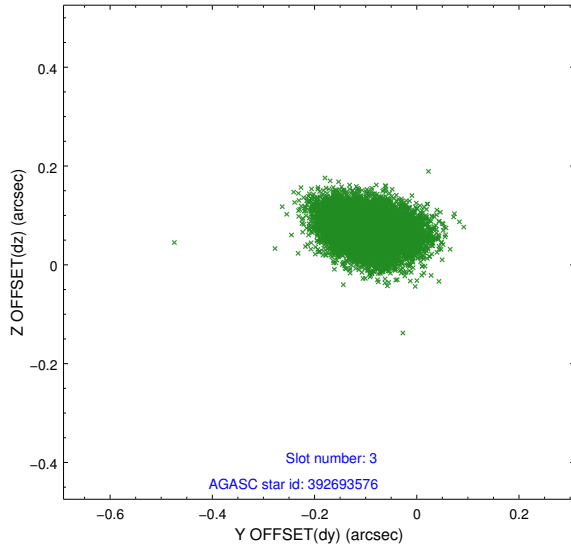


Slot Statistics

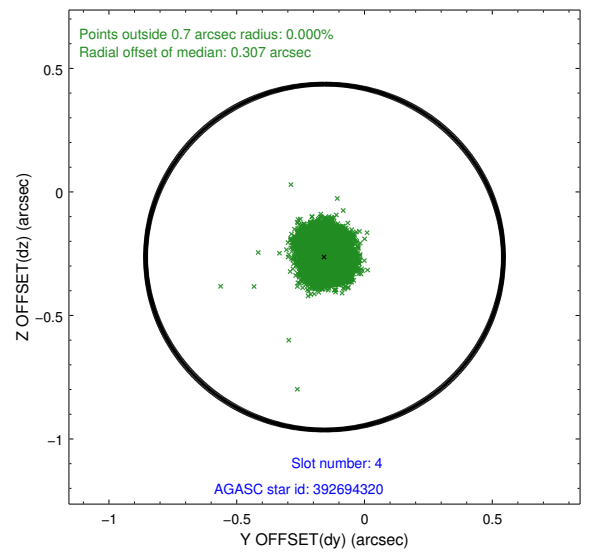
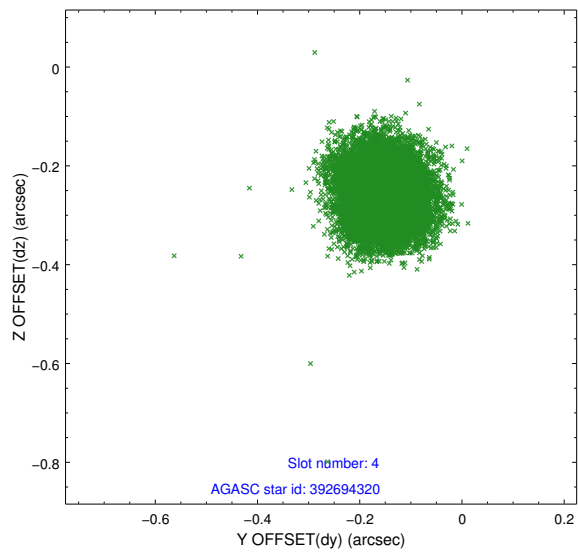
slot	status	id	mag	n_pts	med_dy	med_dz	dr1	dr2	ra	dec	mean_y	mean_z
0	FID	ACIS-I-1	7.23	4374	0.083	-0.072	0.023	0.032	0.000000	0.000000	933.65	-992.51
1	FID	ACIS-I-5	7.22	4375	-0.212	0.076	0.015	0.027	0.000000	0.000000	-1814.62	904.99
2	FID	ACIS-I-6	7.25	4375	0.045	0.060	0.017	0.036	0.000000	0.000000	398.91	1549.73
3	GUIDE	392693576	8.17	8749	-0.093	0.073	0.060	0.102	149.531855	41.595239	1432.79	-1523.19
4	GUIDE	392694320	8.52	8750	-0.157	-0.264	0.081	0.123	148.201769	41.462521	1372.61	2092.19
5	GUIDE	392697792	9.49	8746	0.165	0.044	0.087	0.141	149.223797	40.535935	-2265.53	-273.28
6	GUIDE	392695808	8.17	8750	0.077	-0.004	0.064	0.100	149.841460	40.572011	-2319.41	-1967.46
7	GUIDE	392695480	8.87	8747	0.007	0.150	0.088	0.139	149.916110	41.131503	-337.29	-2379.15

2.4 Star Slots

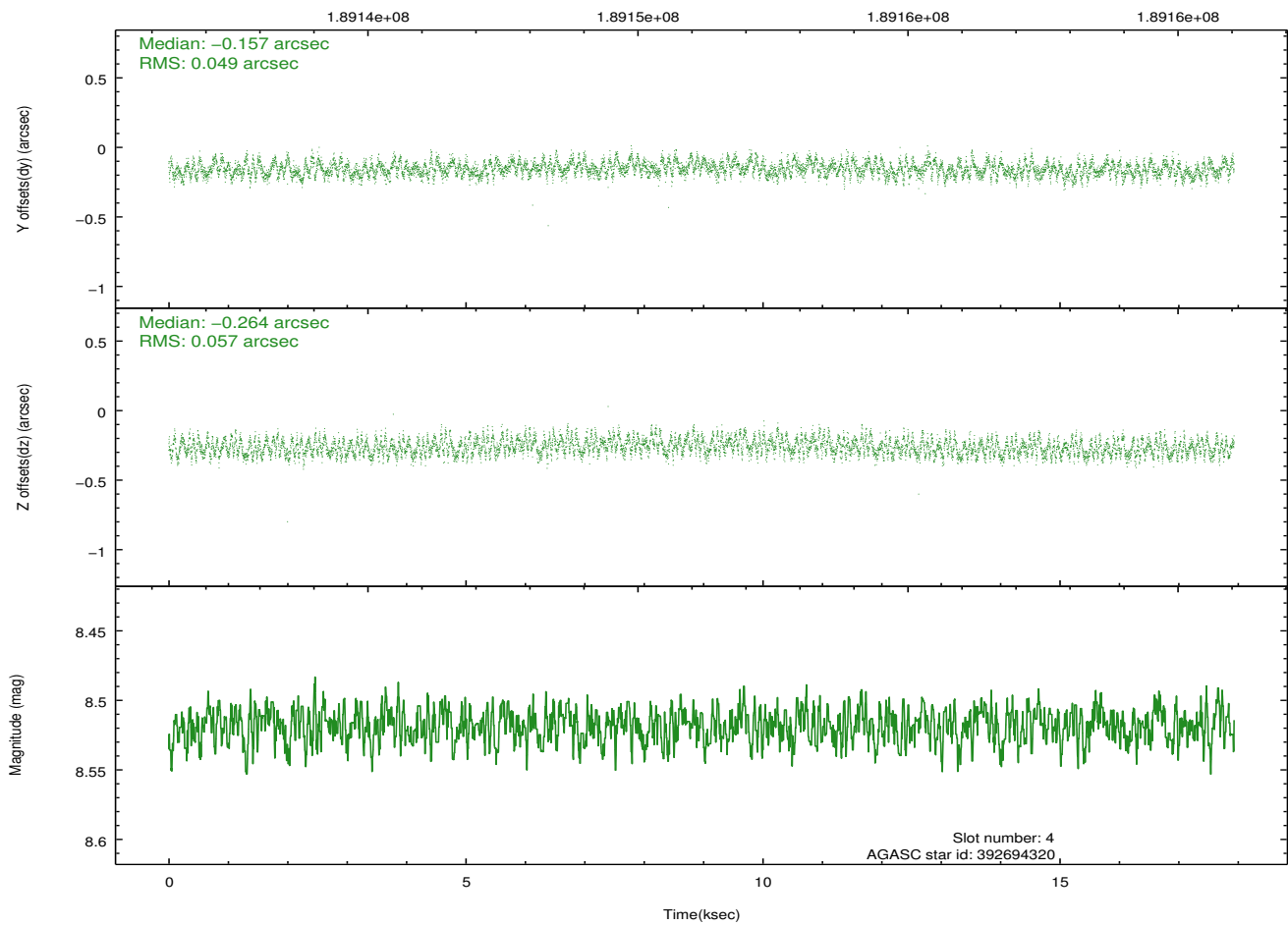
2.4.1 Slot 3



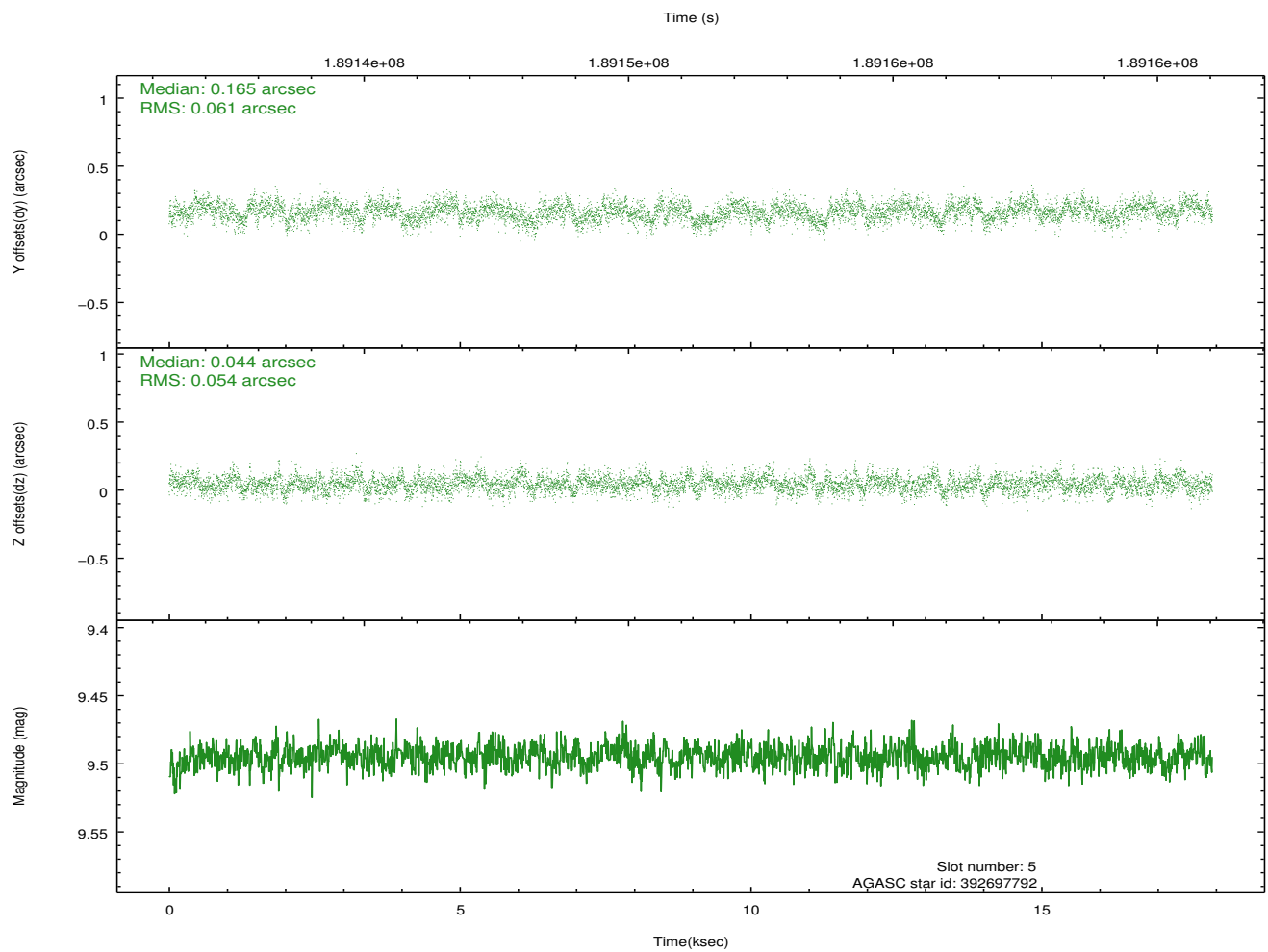
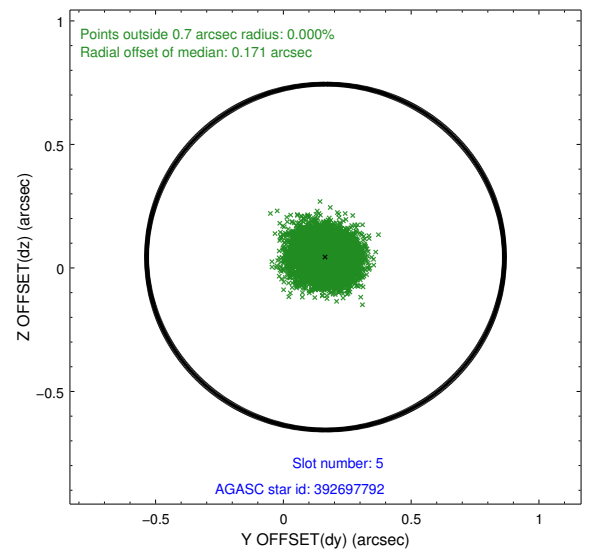
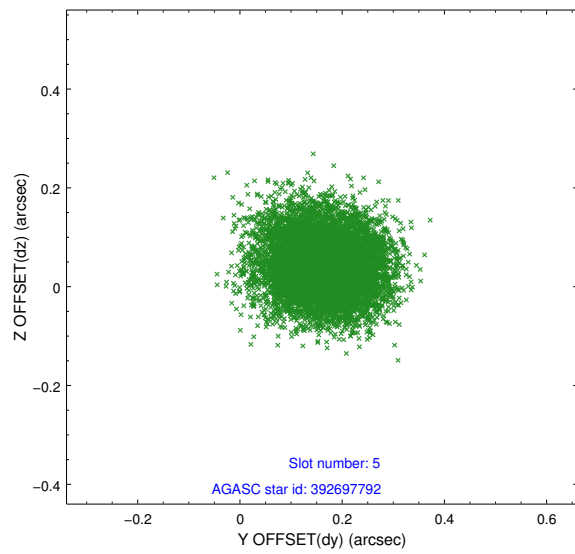
2.4.2 Slot 4



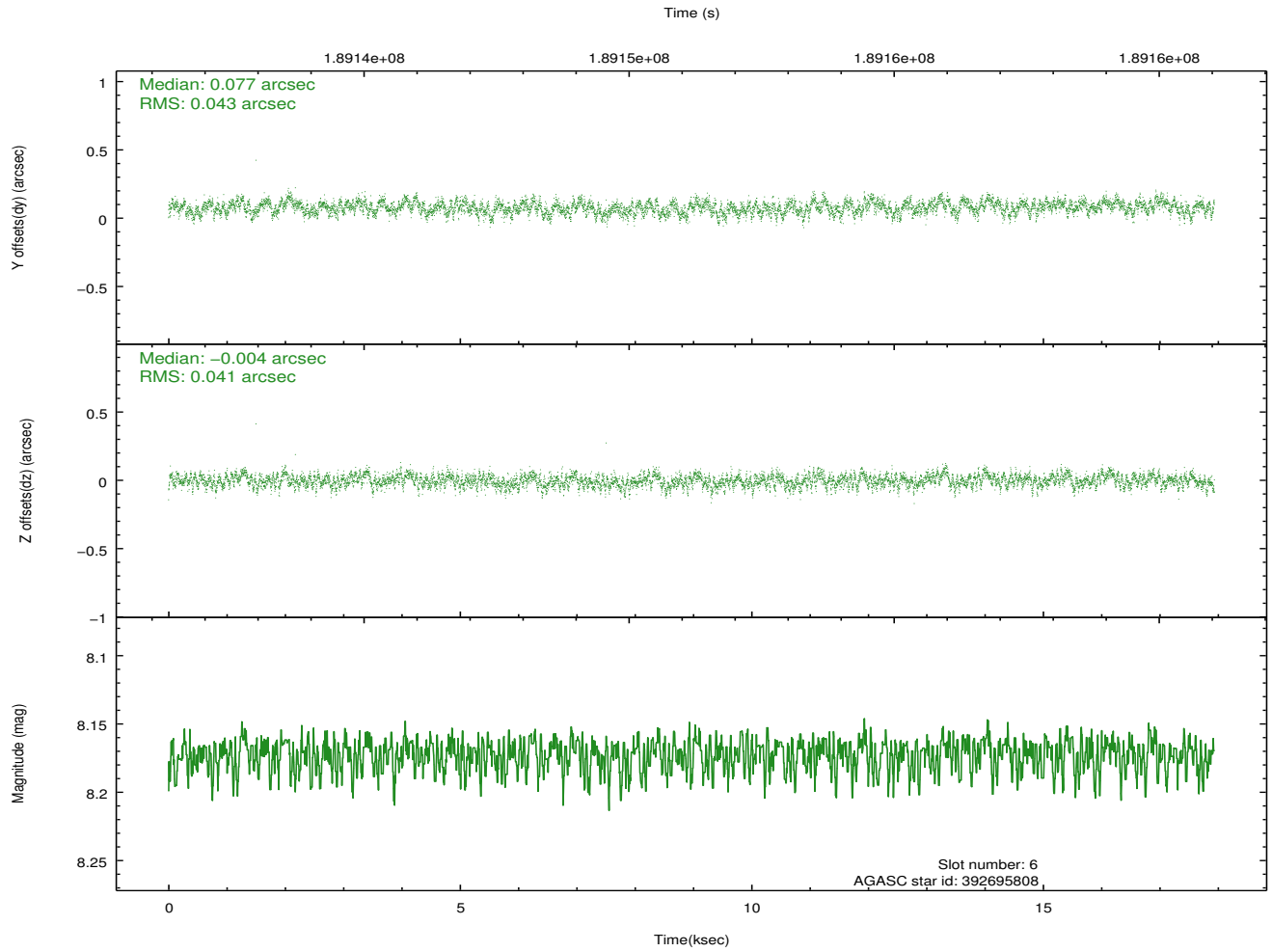
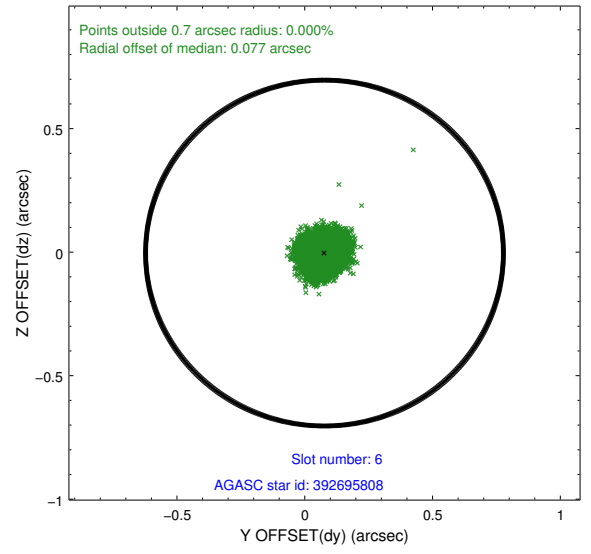
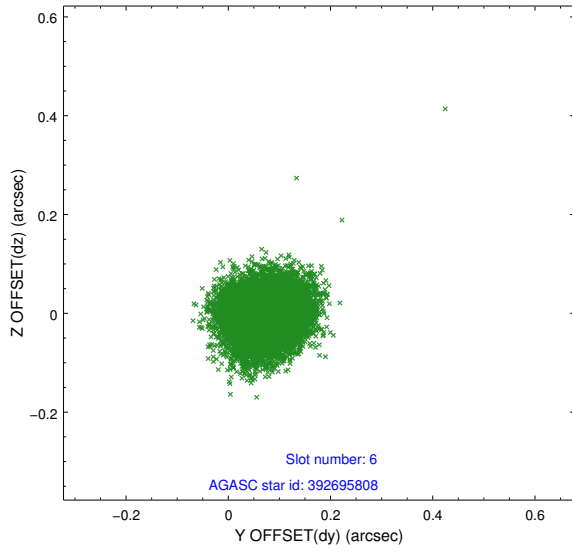
Time (s)



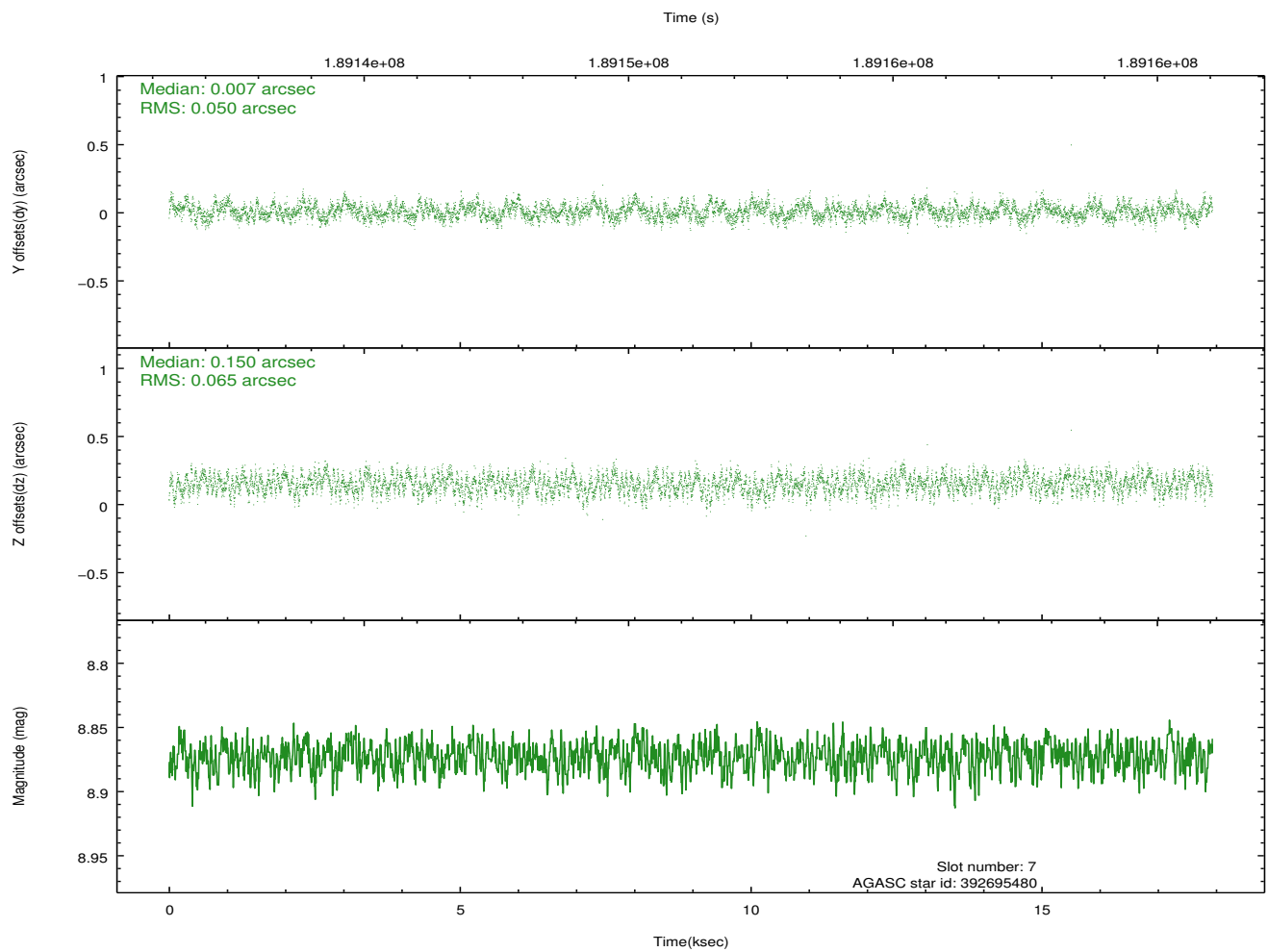
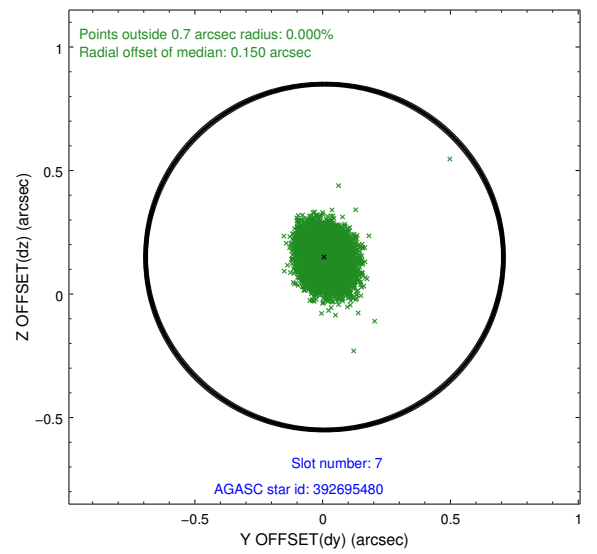
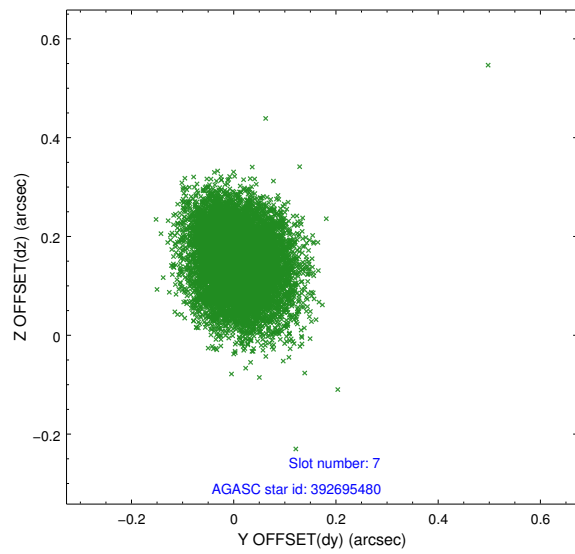
2.4.3 Slot 5



2.4.4 Slot 6

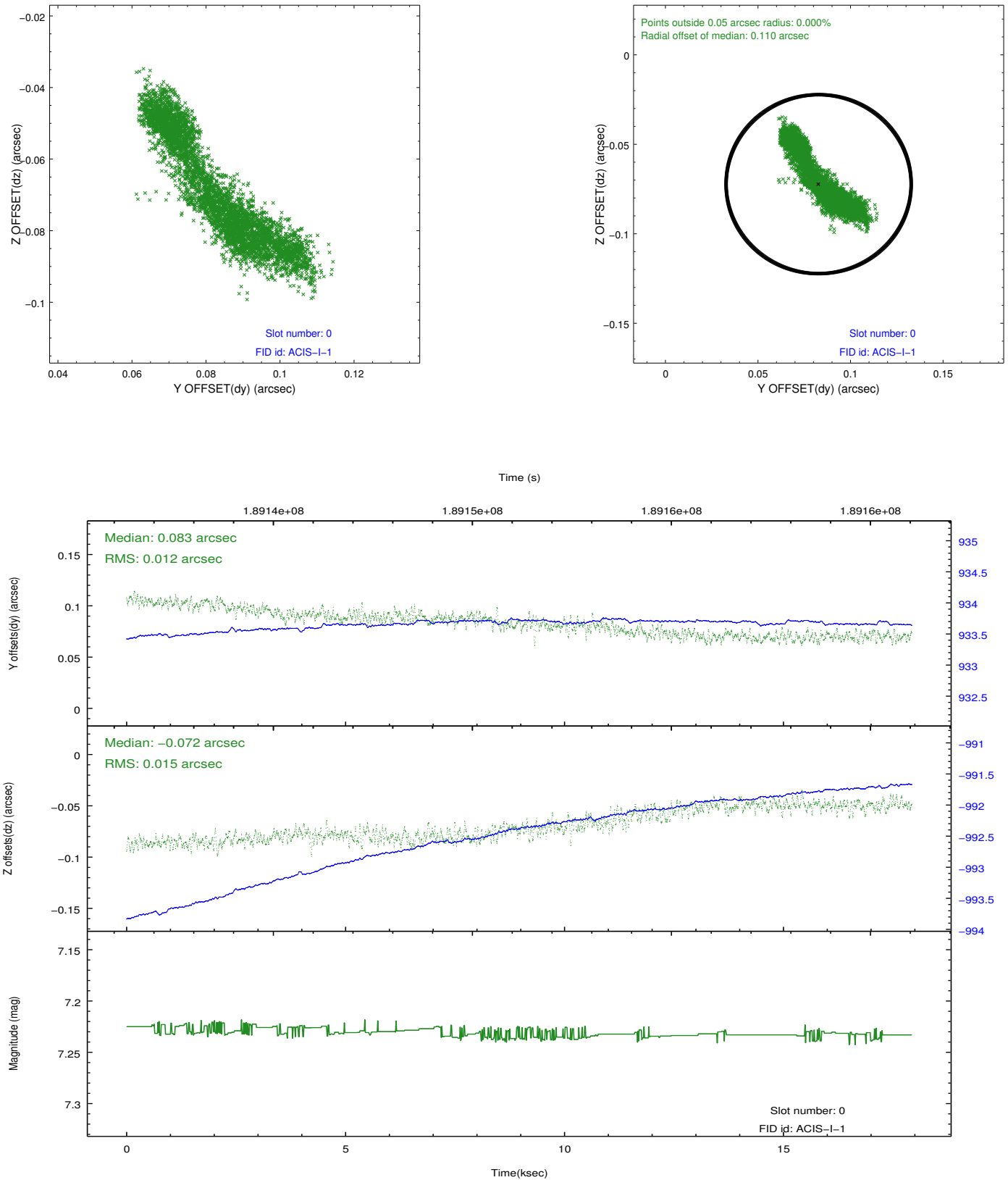


2.4.5 Slot 7

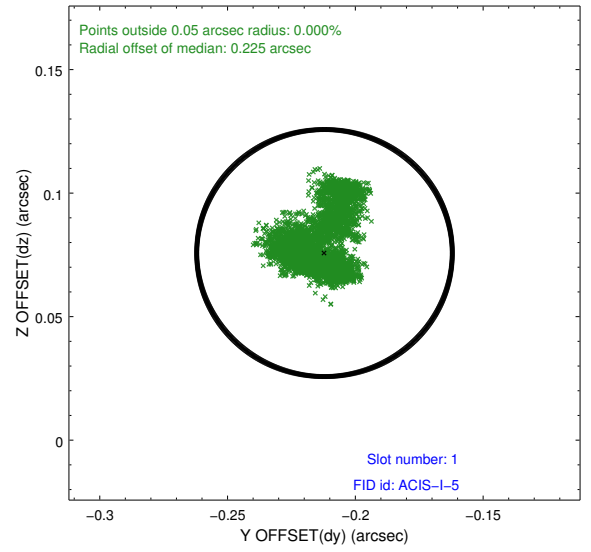
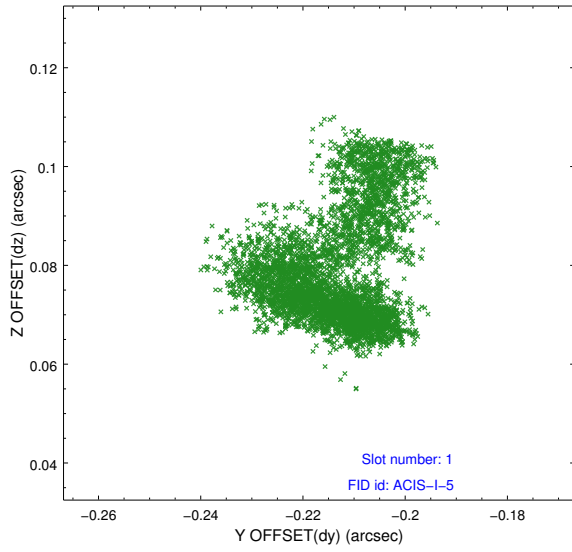


2.5 FID Slots

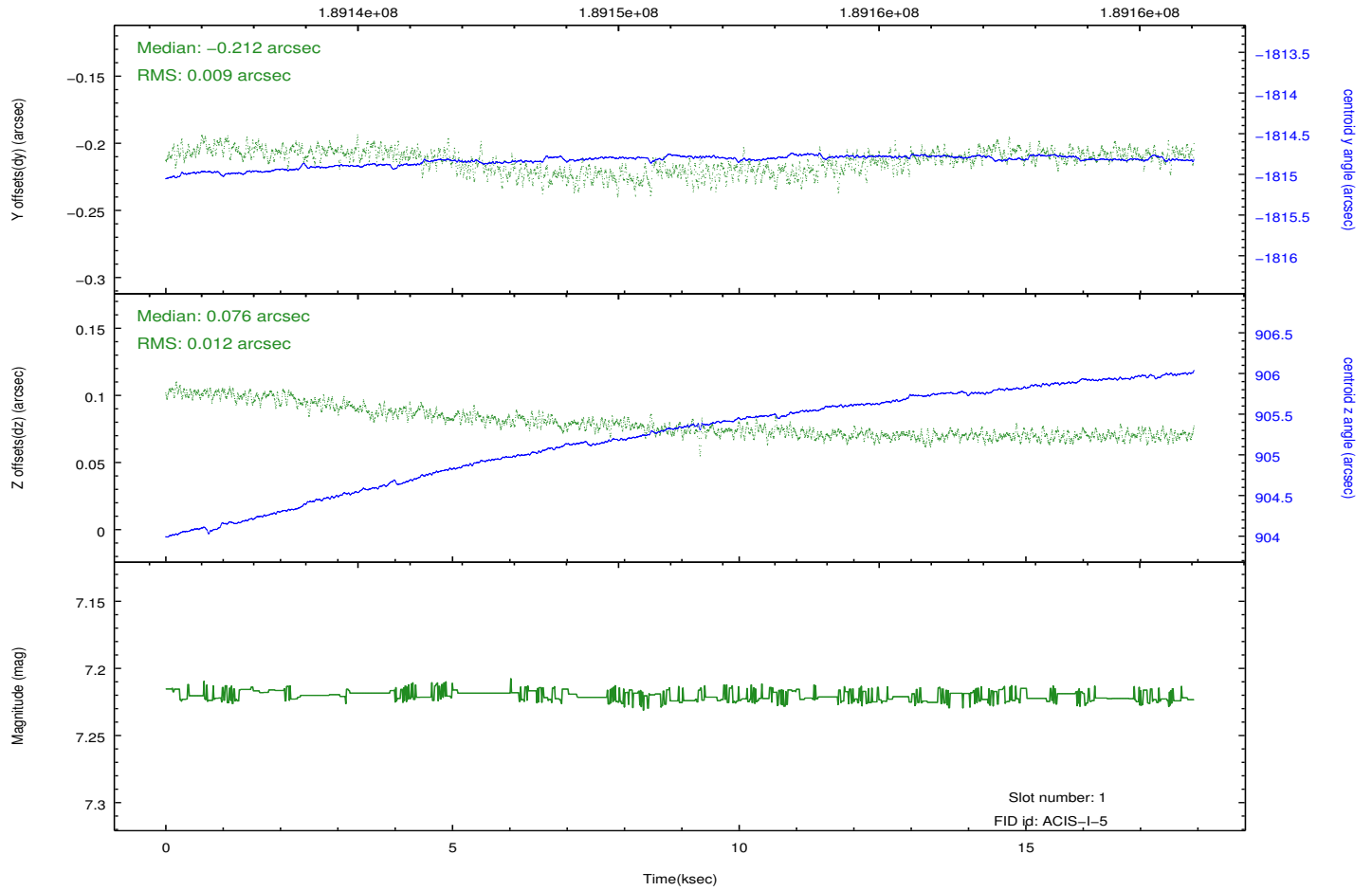
2.5.1 Slot 0



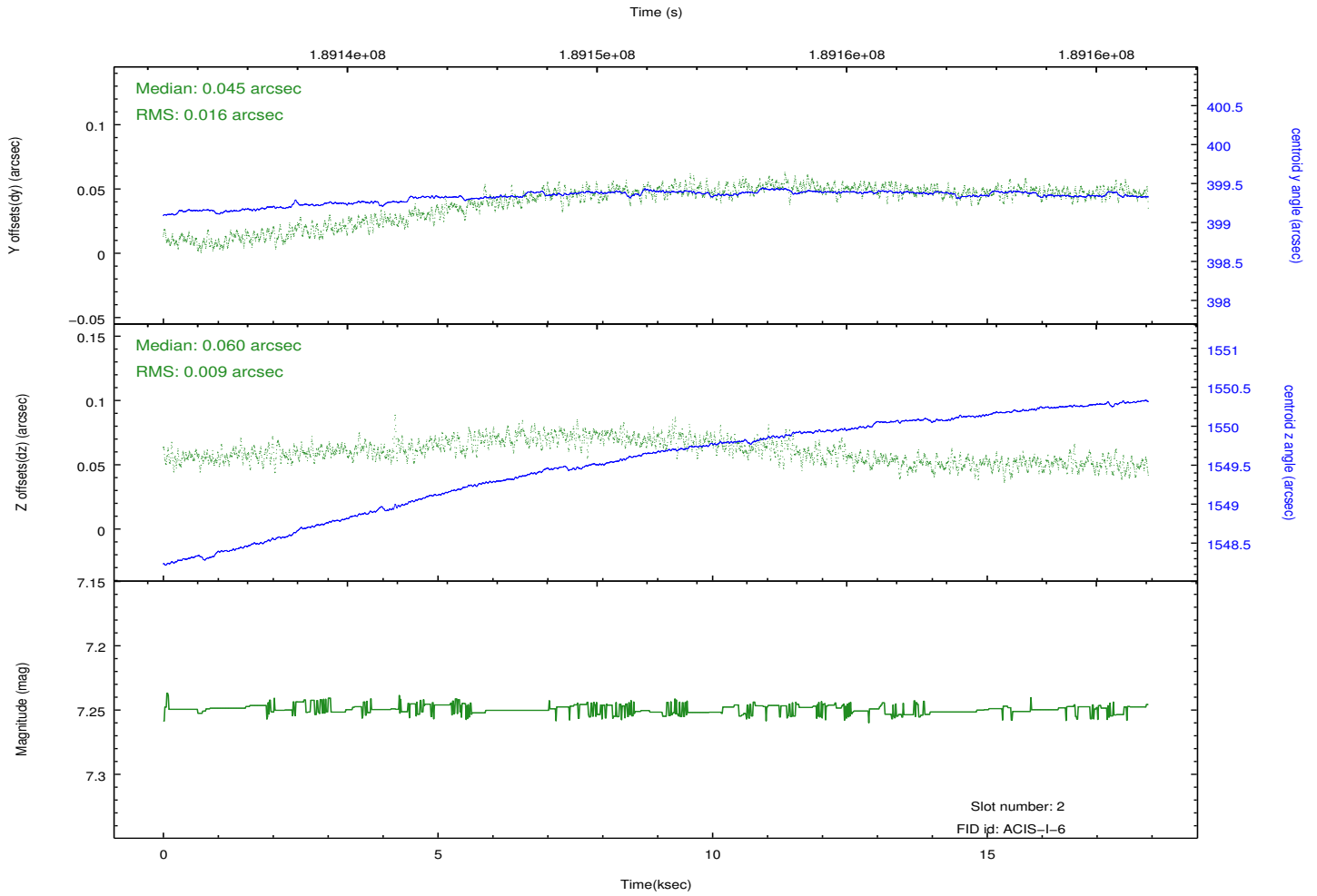
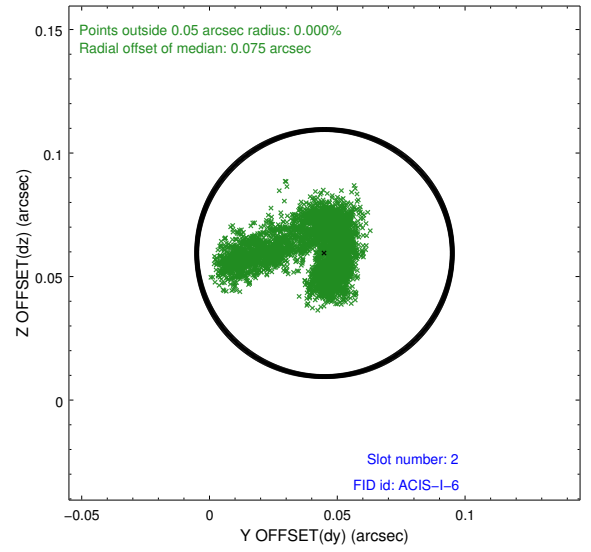
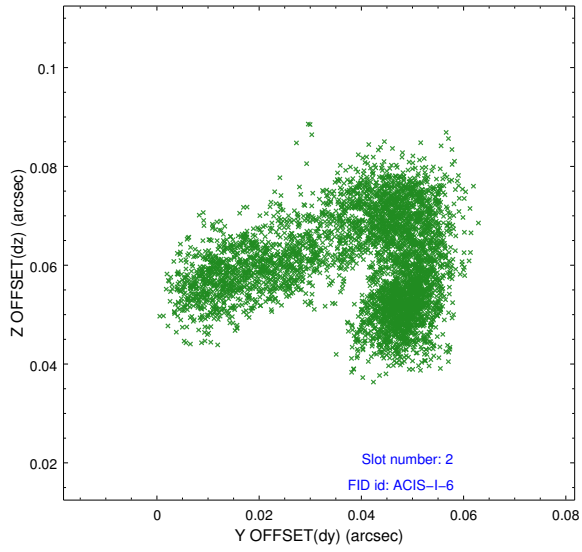
2.5.2 Slot 1



Time (s)



2.5.3 Slot 2



A Summary

A.1 Status

V&V Scientist	Jen Lauer
V&V Date (YYYY-MM-DD)	2012.12.03
V&V Edition	1
V&V Disposition and Status	OK
V&V Charge Time	17.573

A.2 Comments

On day 356 at about 00:30, the OBA heater stuck in the 'on' position. This situation affected obsid 4901 and all subsequent observations to this point. The result of this anomaly could be a displacement of the target on the chip in the z direction. The displacement will be small because everything is still within spec, but the target may be spatially displaced, have a different point spread function, or trail across the chip.