

V&V Reference Report

L2 ASCDS Version : 8.5.1

Observation 5434 - L2 Version 3
Chandra X-Ray Center

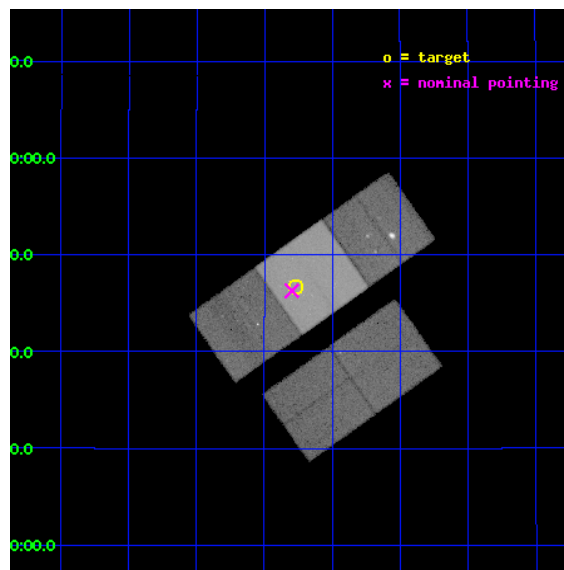
L2 Processing Date : Dec 14 2012

Contents

1	Front	2
2	OBI	3
2.1	OBI	3
2.1.1	Images	3
2.1.2	Bias	3
2.1.3	Parameters	4
2.1.4	Events	4
2.2	Compared Parameters	5
2.3	Aspect	6
2.4	Star Slots	9
2.4.1	Slot 3	9
2.4.2	Slot 4	10
2.4.3	Slot 5	11
2.4.4	Slot 6	12
2.4.5	Slot 7	13
2.5	FID Slots	14
2.5.1	Slot 0	14
2.5.2	Slot 1	15
2.5.3	Slot 2	16
A	Summary	17
A.1	Status	17
A.2	Comments	17

1 Front

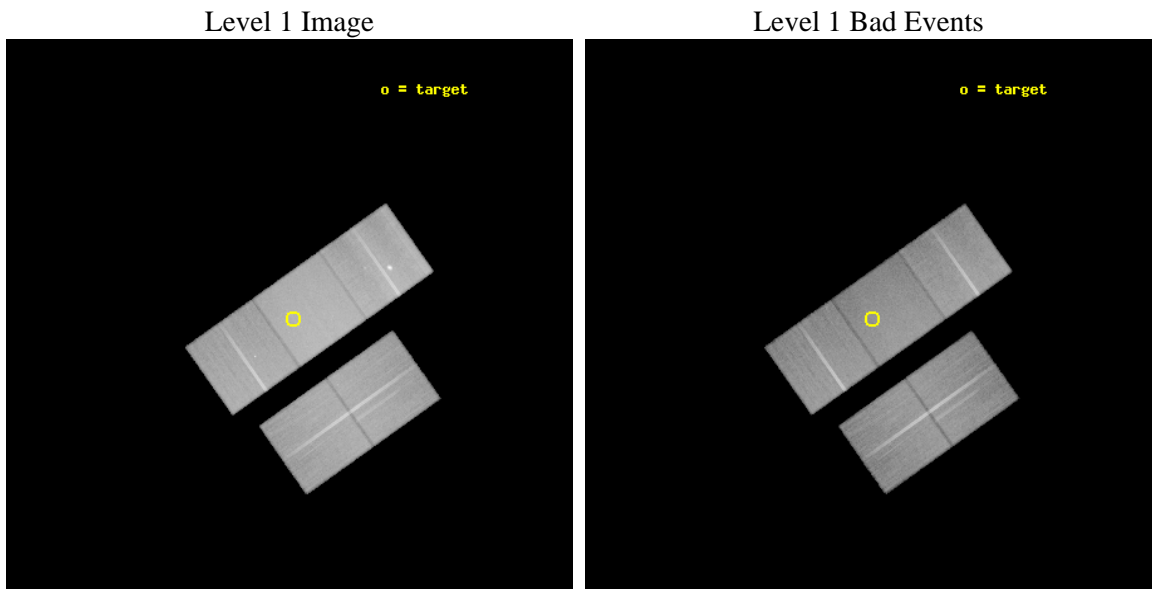
seq_num	300150	Sequence number
obs_id	5434	Observation id
title	Sensitive X-ray surveys of the nearby globular clusters NGC 6544, NGC 6838 (M71), and NGC 6656 (M22)	Proposal title
observer	Dr. Ronald Elsner	Principal investigator
object	NGC 6838 (M71)	Source name
dtcycle	0	
cycle	P	events from which exps? Prim/Second/Both
ra_targ	298.442083	Observer's specified target RA [deg]
dec_targ	18.778389	Observer's specified target Dec [deg]
ra_nom	298.44926100113	Nominal RA [deg]
dec_nom	18.771497933577	Nominal Dec [deg]
roll_nom	324.69871461568	Nominal Roll [deg]
revision	3	Processing version of data
ontime	53140.199897796	Sum of GTIs [s]
livetime	52445.884064885	Livetime [s]
ontime2	53133.917947352	Sum of GTIs [s]
ontime3	53127.635967076	Sum of GTIs [s]
ontime6	53130.776977152	Sum of GTIs [s]
ontime7	53140.199897796	Sum of GTIs [s]
ontime8	53130.776987135	Sum of GTIs [s]
l2events	417879	Number of level 2 events



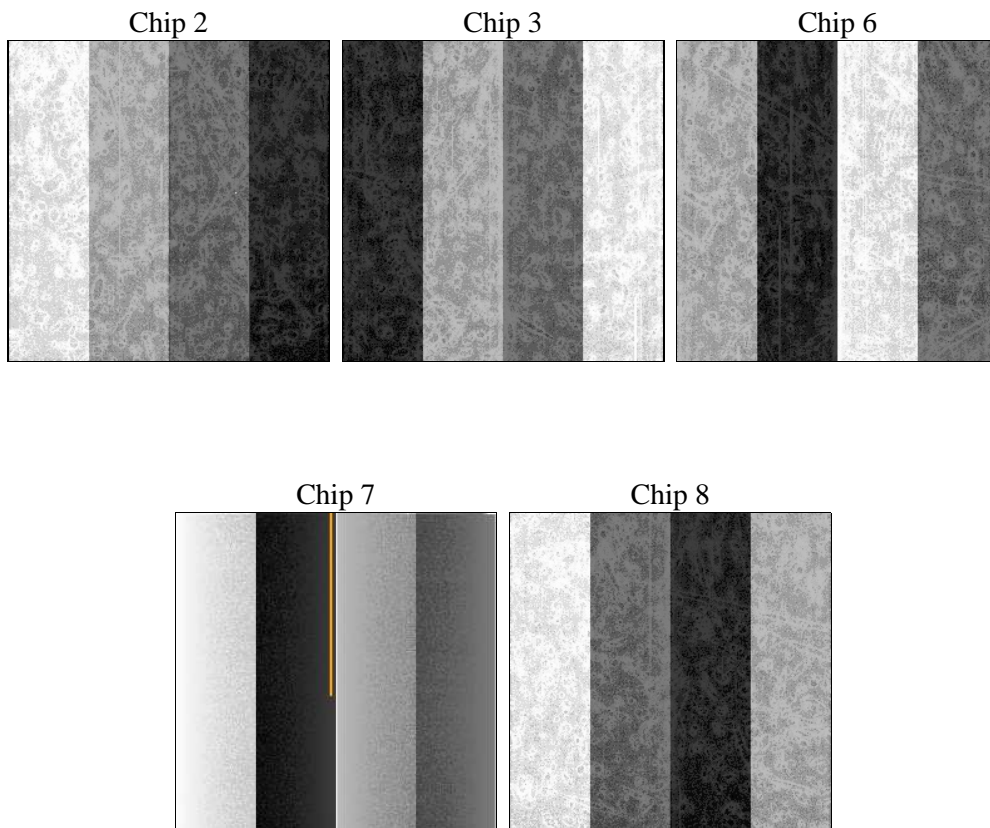
2 OBI

2.1 OBI

2.1.1 Images



2.1.2 Bias



2.1.3 Parameters

obi_num	0	Obi number	sched_exp_time	53000.000000	[s] Scheduled observation exposure time
ascdsver	8.5.1	Processing system revision	ontime	53140.199897796	Sum of GTIs [s]
caldbver	4.5.5	 	ontime2	53133.917947352	Sum of GTIs [s]
date	2012-12-14T23:00:35	Date and time of file creation	ontime3	53127.635967076	Sum of GTIs [s]
revision	3	Processing version of data	ontime6	53130.776977152	Sum of GTIs [s]
			ontime7	53140.199897796	Sum of GTIs [s]
			ontime8	53130.776987135	Sum of GTIs [s]
			l1events	2432122	Number of level 1 events

2.1.4 Events

	ccd 2	ccd 3	ccd 6	ccd 7	ccd 8
level 1 events	428349	419920	440469	584913	558471
rejected events	379326	372041	390091	349022	436481
rejected %	88%	88%	88%	59%	78%

	ccd 2	ccd 3	ccd 6	ccd 7	ccd 8
grade 0 events	22444	21611	20847	21901	44526
	5%	5%	4%	3%	7%
grade 1 events	251	265	208	633	395
	0%	0%	0%	0%	0%
grade 2 events	10368	9343	10783	48036	26212
	2%	2%	2%	8%	4%
grade 3 events	4655	4807	4939	21460	12580
	1%	1%	1%	3%	2%
grade 4 events	4676	4768	4987	21544	11722
	1%	1%	1%	3%	2%
grade 5 events	16464	18681	19461	55635	26096
	3%	4%	4%	9%	4%
grade 6 events	8126	8674	10162	129042	30085
	1%	2%	2%	22%	5%
grade 7 events	361365	351771	369082	286662	406855
	84%	83%	83%	49%	72%

2.2 Compared Parameters

Parameter	Planned	Actual	Parameter	Planned	Actual
Instrument	ACIS	ACIS	Obspar format version number	7	7
Detector	ACIS-23678	ACIS-23678	Obspar file type	PREDICTED	ACTUAL
Grating	NONE	NONE	Obspar update status	NONE	UPDATED
Data mode	VFAINT	VFAINT	Number of optional ACIS chips dropped	0	0
Observation mode	POINTING	POINTING	On-chip summing requested	N	N
[deg] Pointing RA	298.420588	298.4492610011293	Subarray requested	NONE	NONE
[deg] Pointing Dec	18.773651	18.77149793357708	Alternating exposures requested	N	N
[deg] Pointing Roll	324.551323	324.698714615684	[s] Primary exposure time	0.000000	3.1
[mm] SIM focus pos	-0.684267	-0.6828225247311905			
[mm] SIM defocus	0	0.001444936568705701			
[mm] SIM translation stage pos	-190.132523	-190.1425803651734			
[mm] SIM translation stage offset	0	0.01005778216563158			
[s] Observation start time (MET)	219944854.184000	219943188.81778			
Observation start date	2004-12-20T15:46:30	2004-12-20T15:19:48			
[s] Observation end time (MET)	219997854.184000	219998521.39527			
Observation end date	2004-12-21T06:29:50	2004-12-21T06:42:01			
Read mode	TIMED	TIMED			

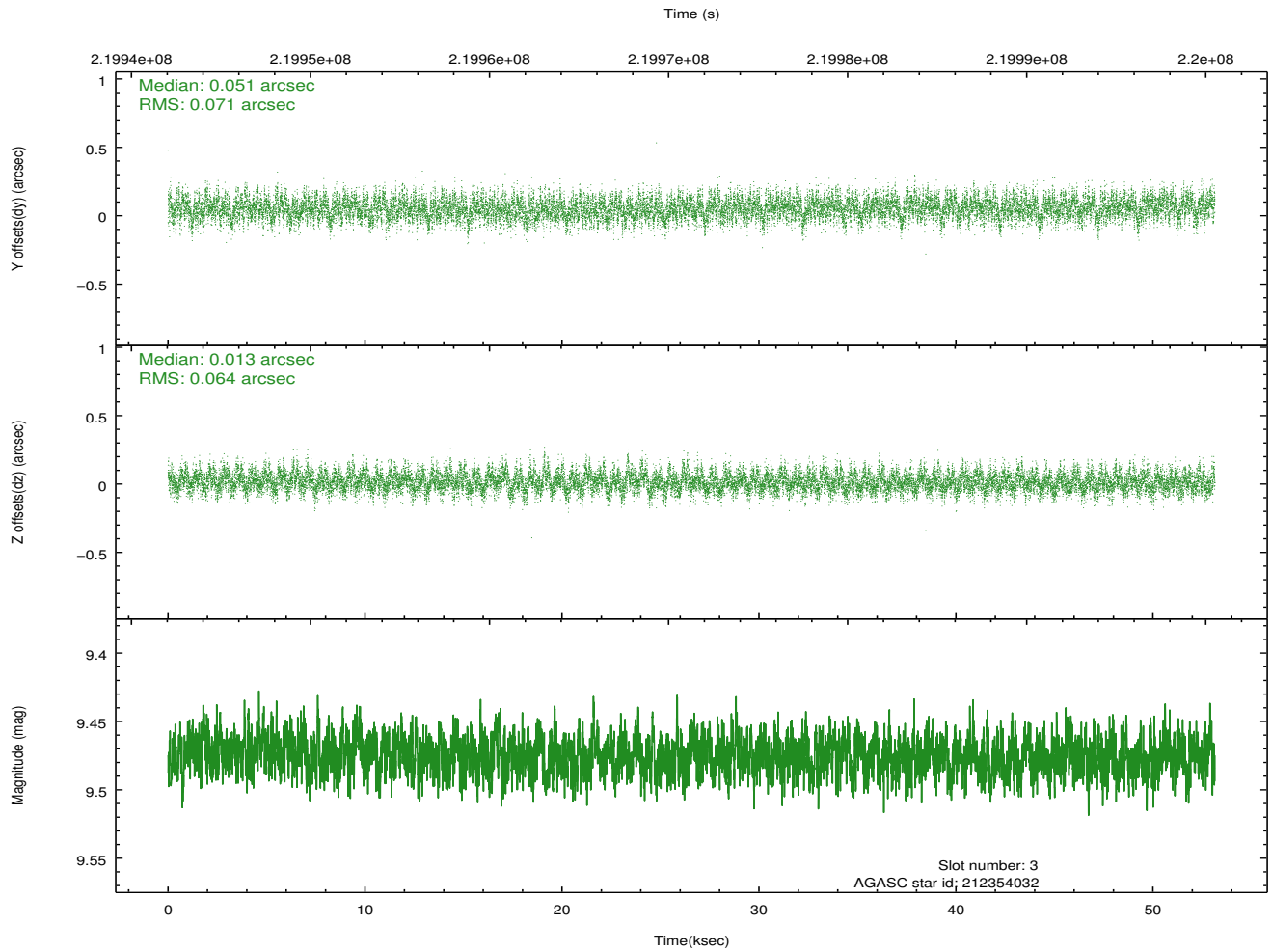
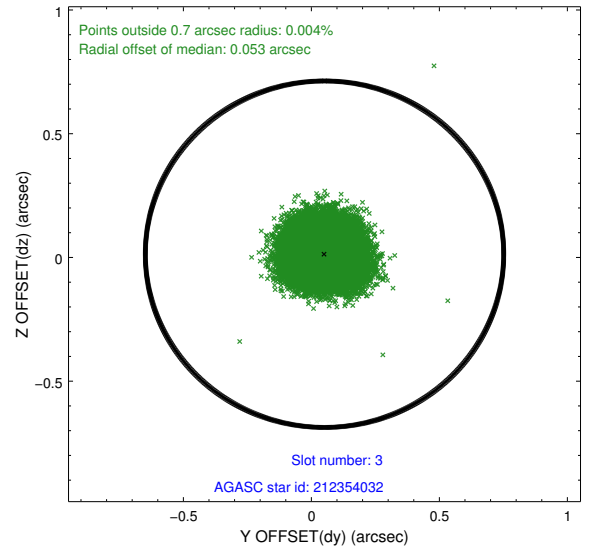
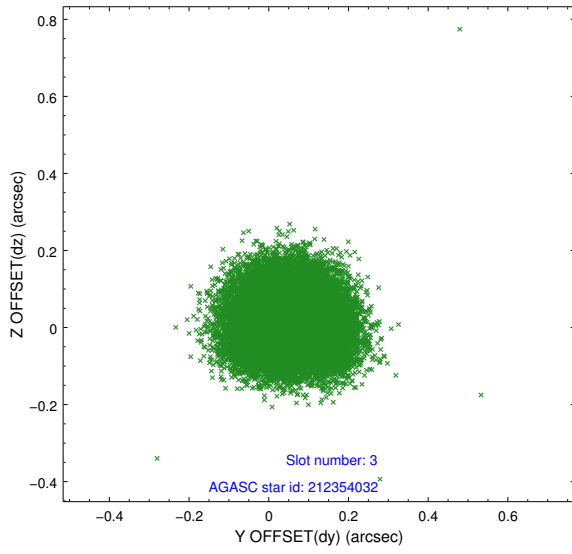
2.3 Aspect

Slot Statistics

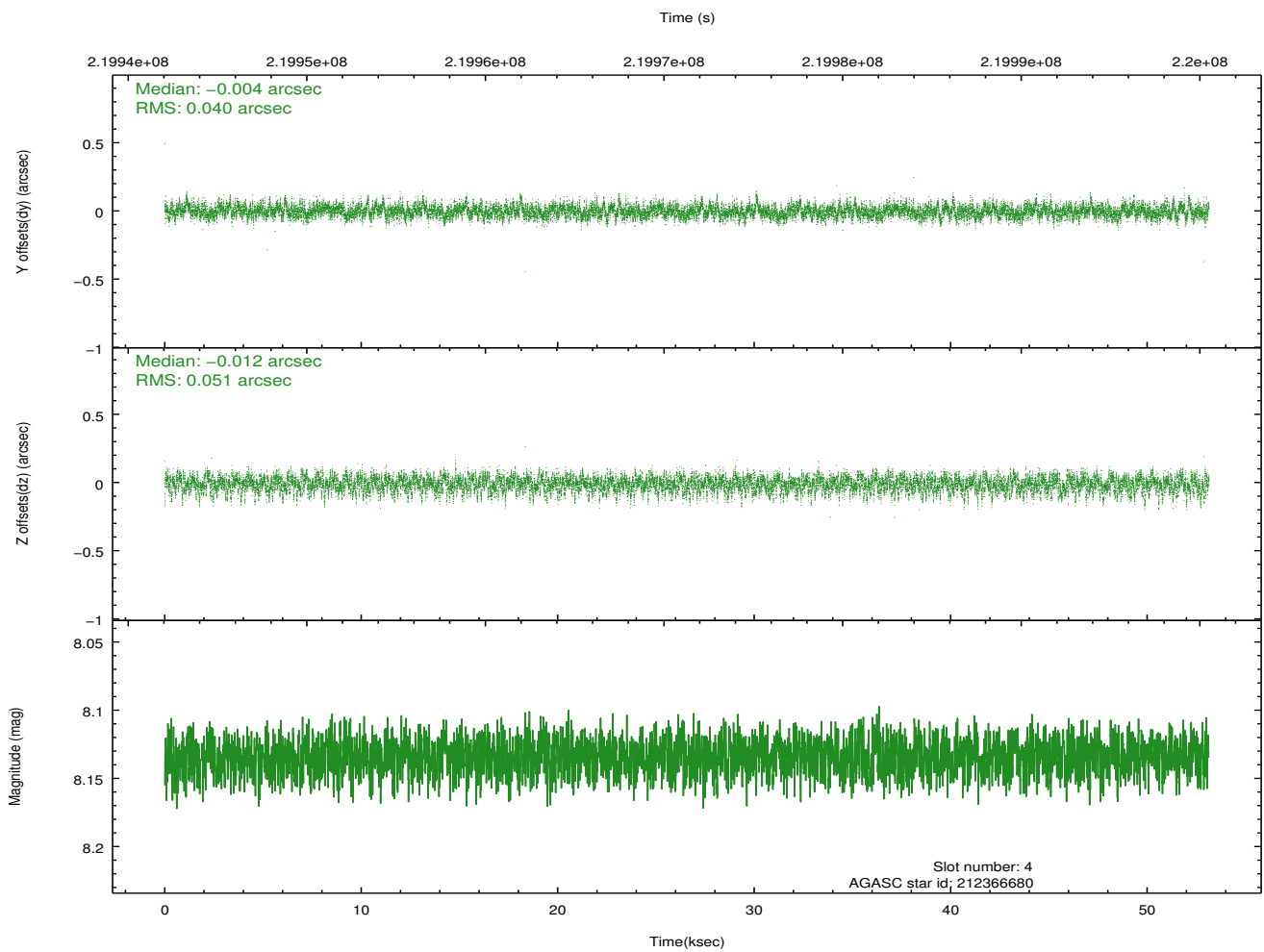
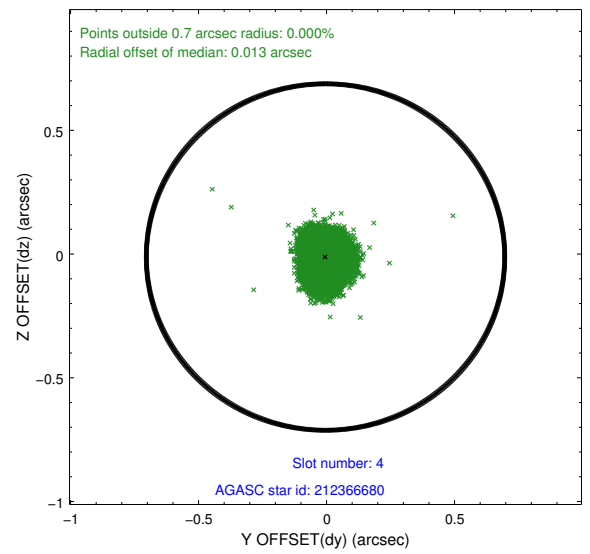
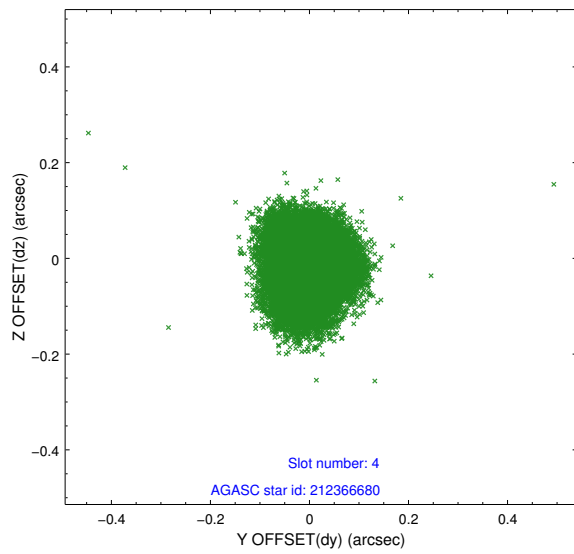
slot	status	id	mag	n_pts	med_dy	med_dz	dr1	dr2	ra	dec	mean_y	mean_z
0	FID	ACIS-S-2	7.10	12961	-0.011	-0.034	0.007	0.012	0.000000	0.000000	-760.29	-1733.73
1	FID	ACIS-S-4	7.20	12962	0.063	0.015	0.007	0.012	0.000000	0.000000	2153.08	174.81
2	FID	ACIS-S-5	7.23	12963	-0.082	0.029	0.009	0.014	0.000000	0.000000	-1813.23	168.49
3	GUIDE	212354032	9.48	25888	0.051	0.013	0.103	0.164	298.849170	18.263133	2259.11	-645.61
4	GUIDE	212366680	8.13	25923	-0.004	-0.012	0.069	0.112	298.161806	18.740684	-649.60	-607.78
5	GUIDE	212867520	8.75	25916	-0.048	-0.111	0.083	0.130	298.770463	19.299202	-129.44	2231.60
6	GUIDE	212215864	9.52	25911	-0.135	-0.045	0.125	0.198	297.683588	18.472136	-1422.98	-2339.51
7	GUIDE	212876272	9.36	25869	0.139	0.151	0.110	0.173	299.350219	18.888202	2336.04	2179.80

2.4 Star Slots

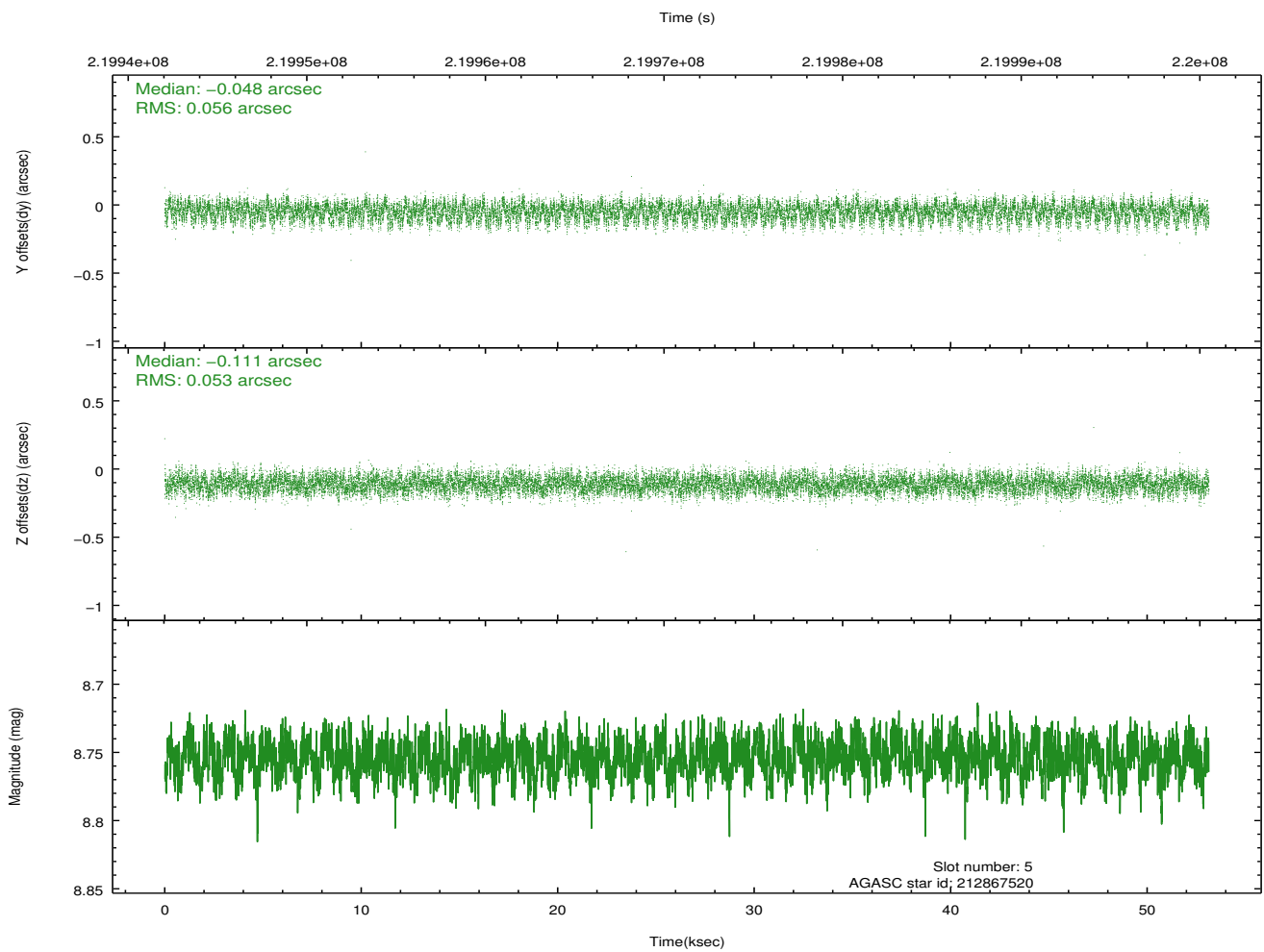
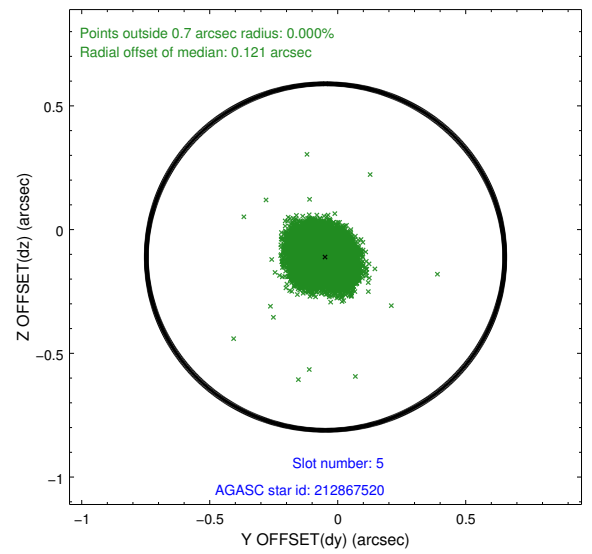
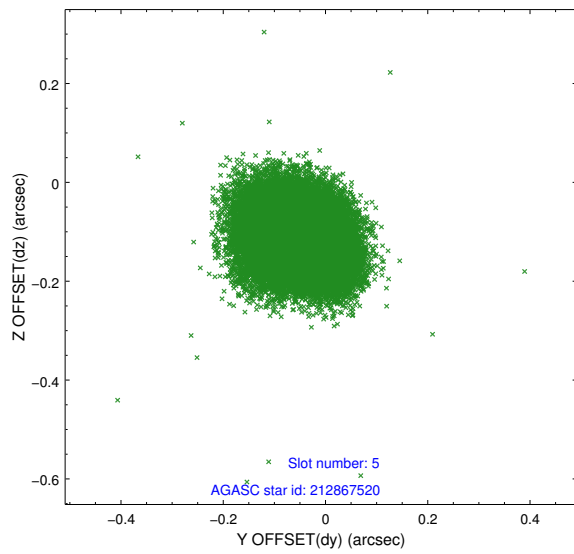
2.4.1 Slot 3



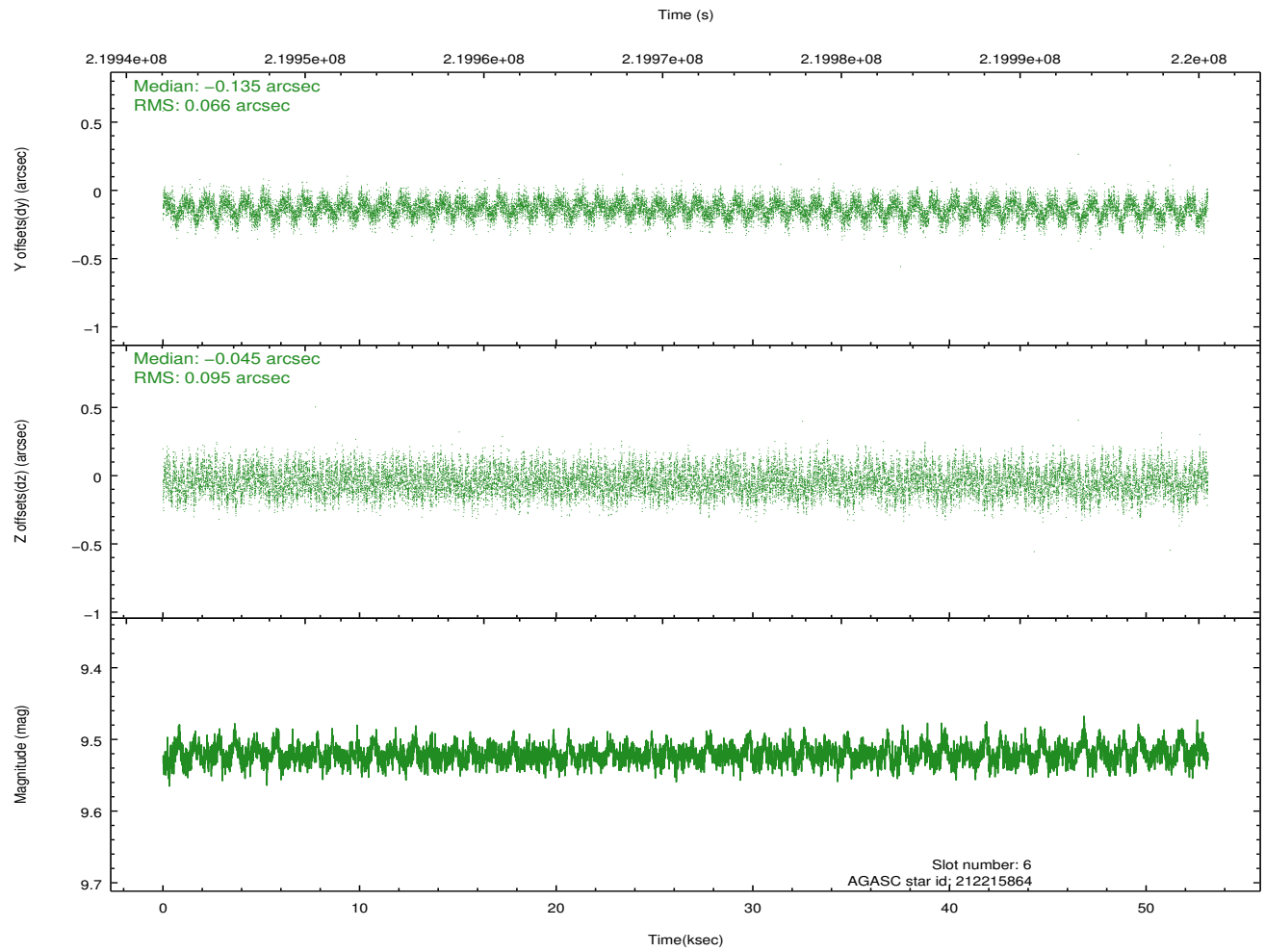
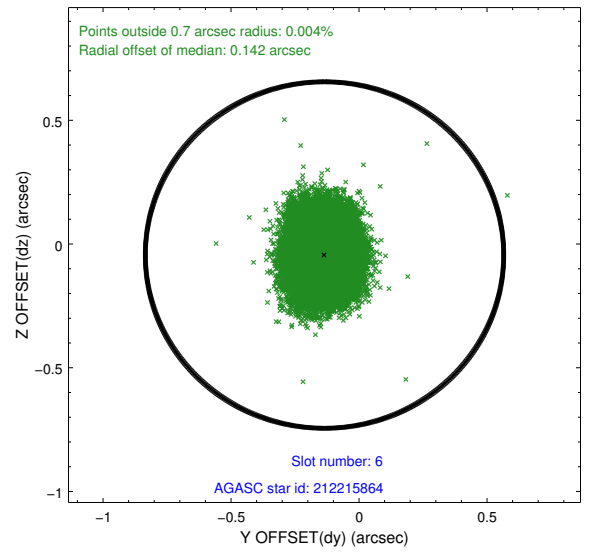
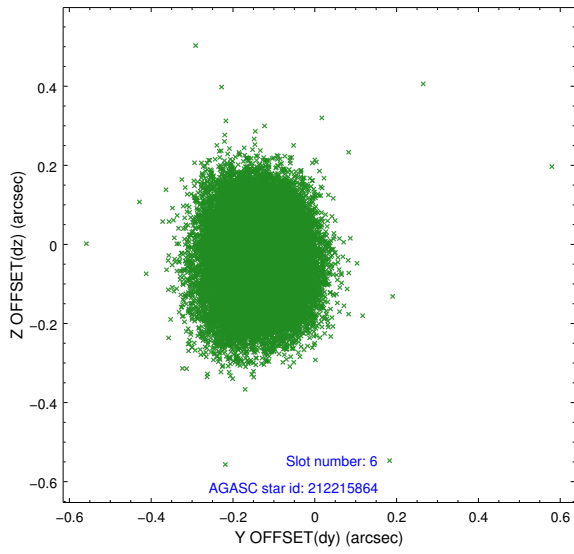
2.4.2 Slot 4



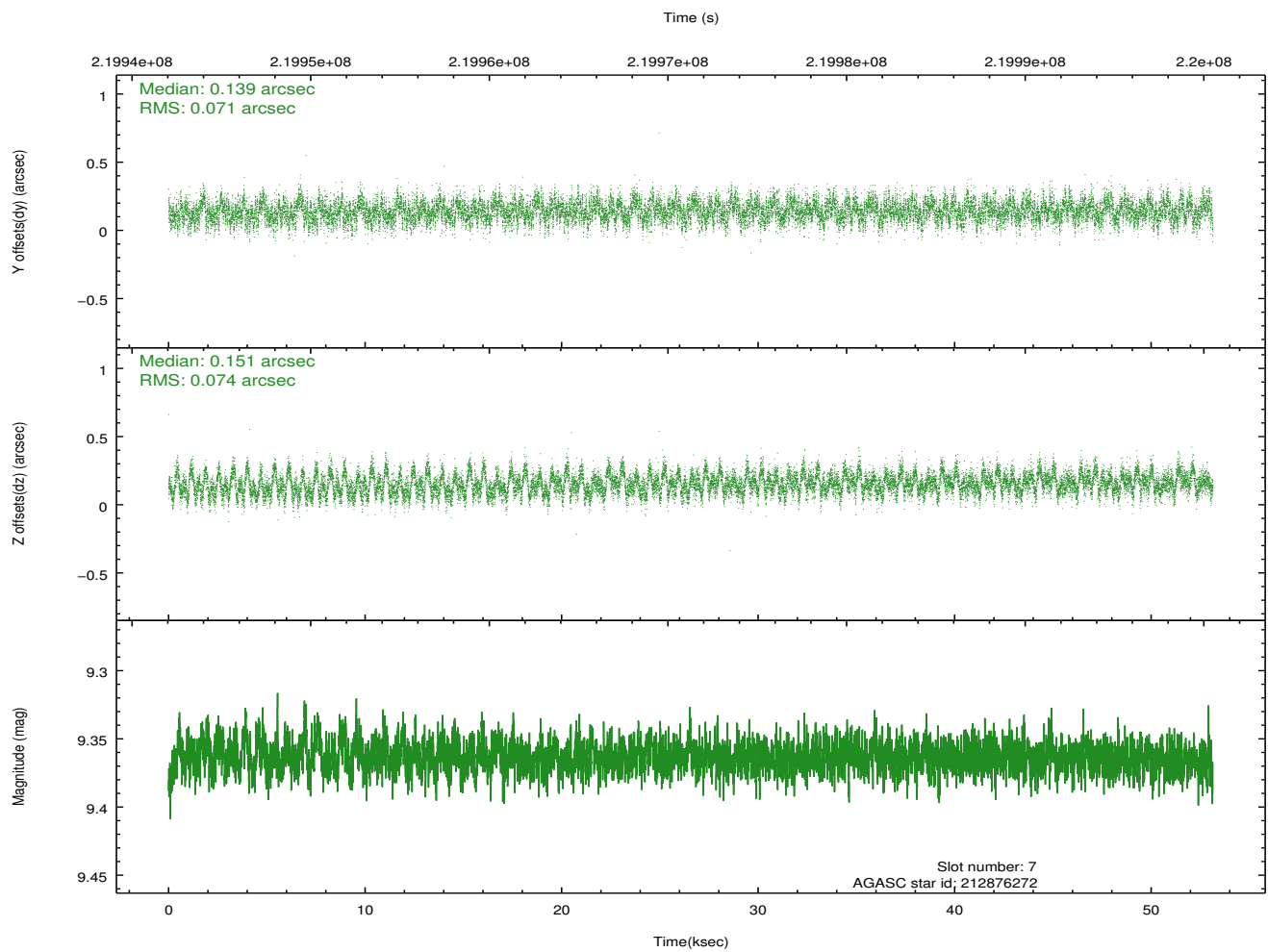
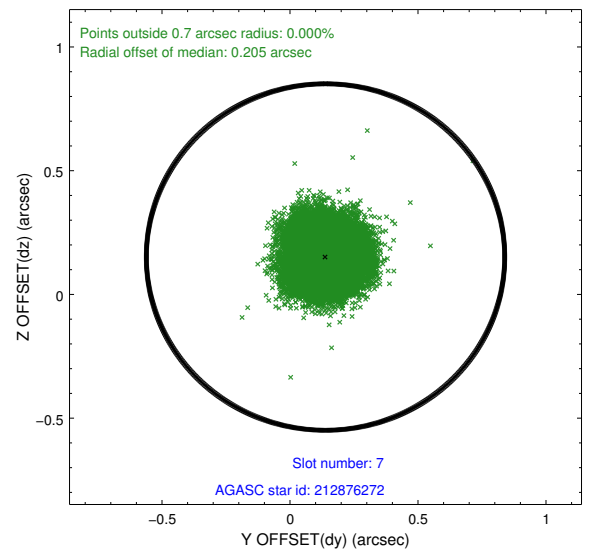
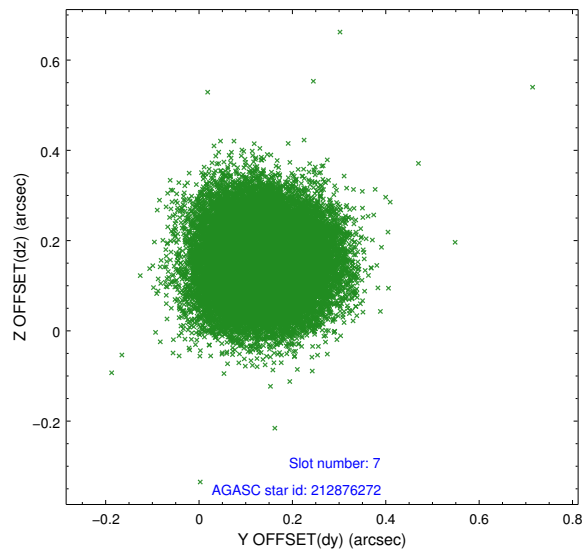
2.4.3 Slot 5



2.4.4 Slot 6

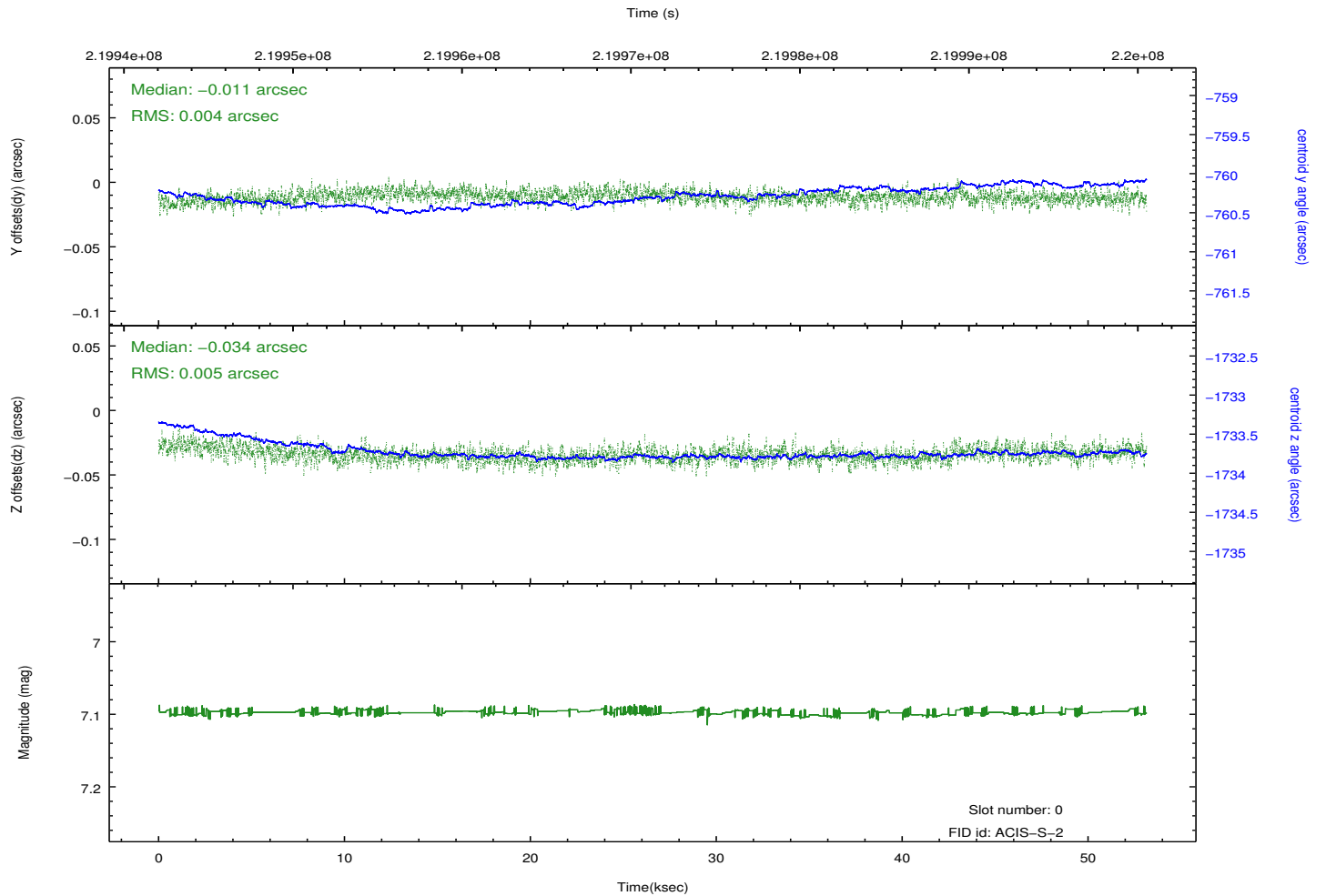
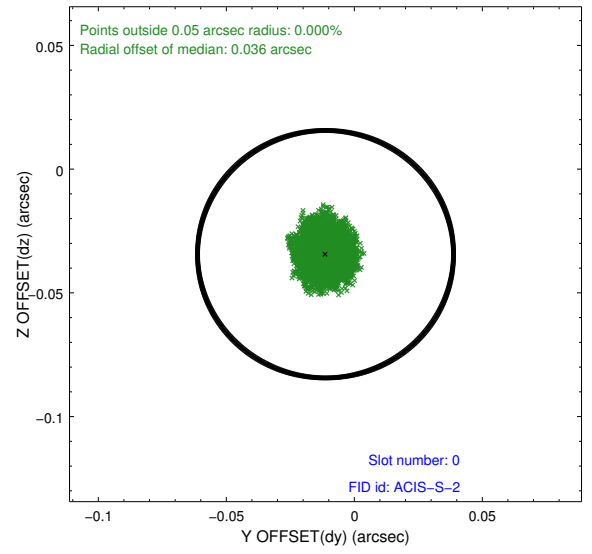
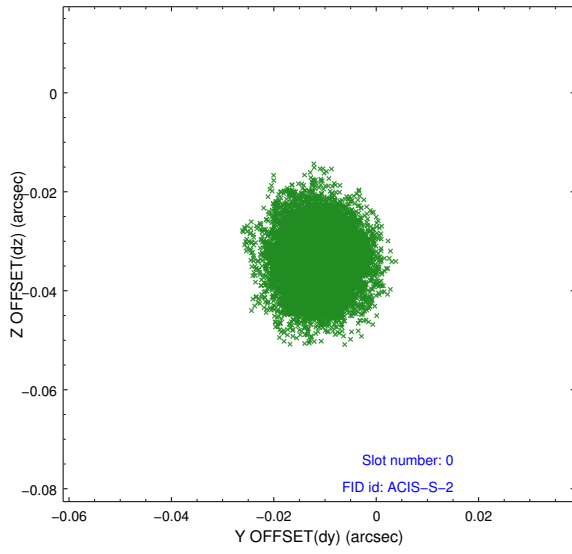


2.4.5 Slot 7

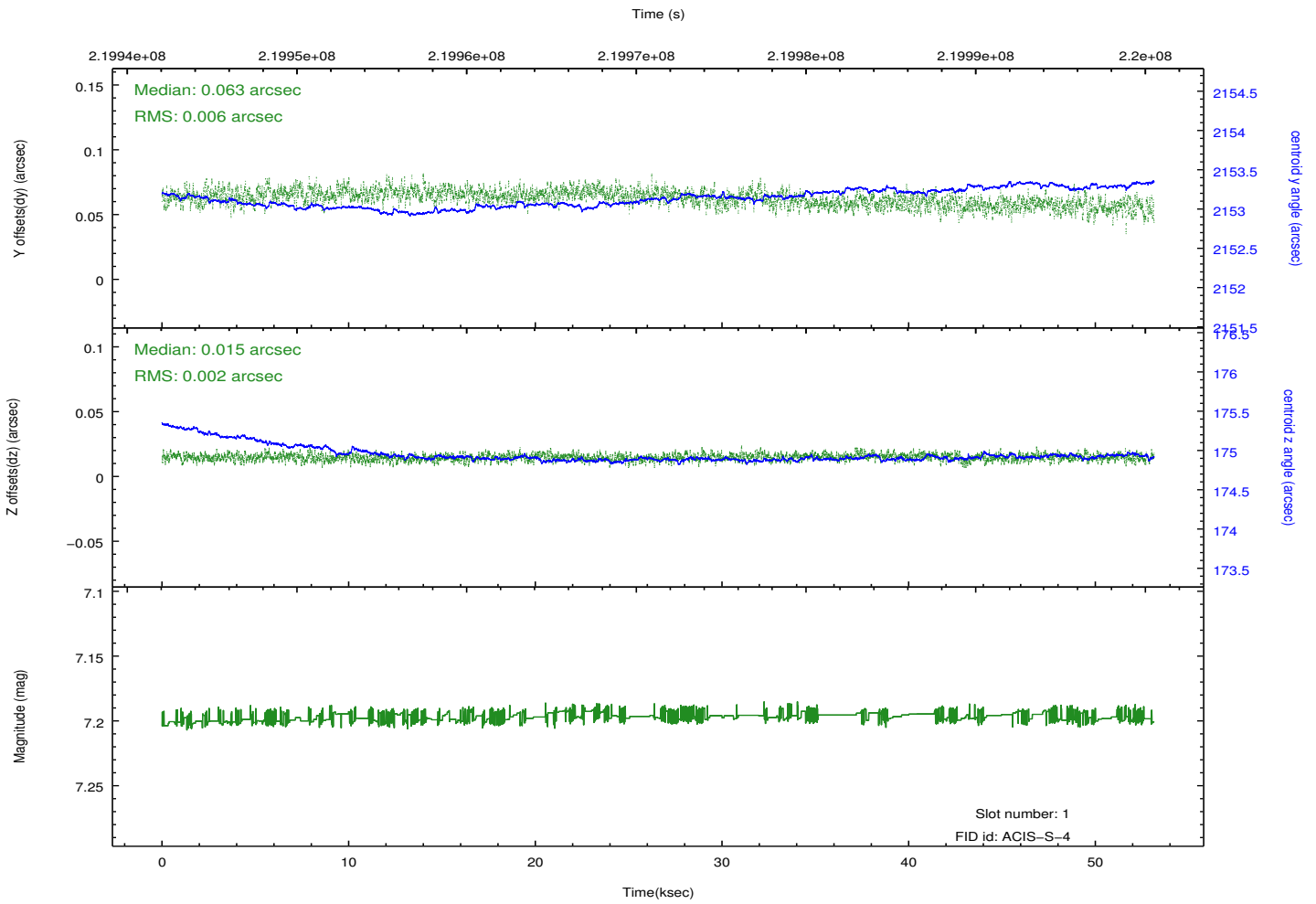
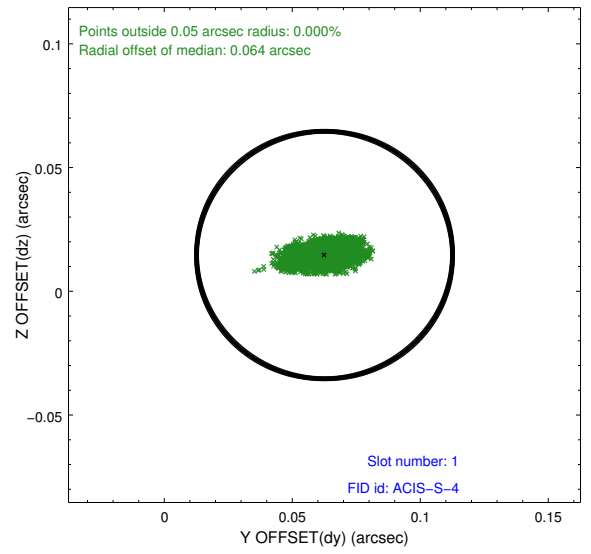
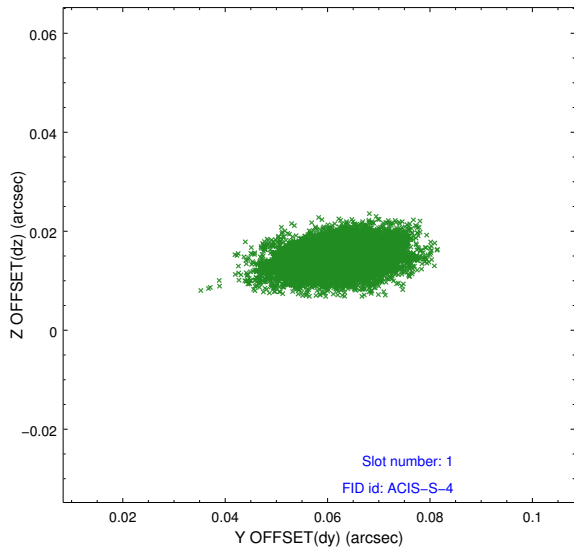


2.5 FID Slots

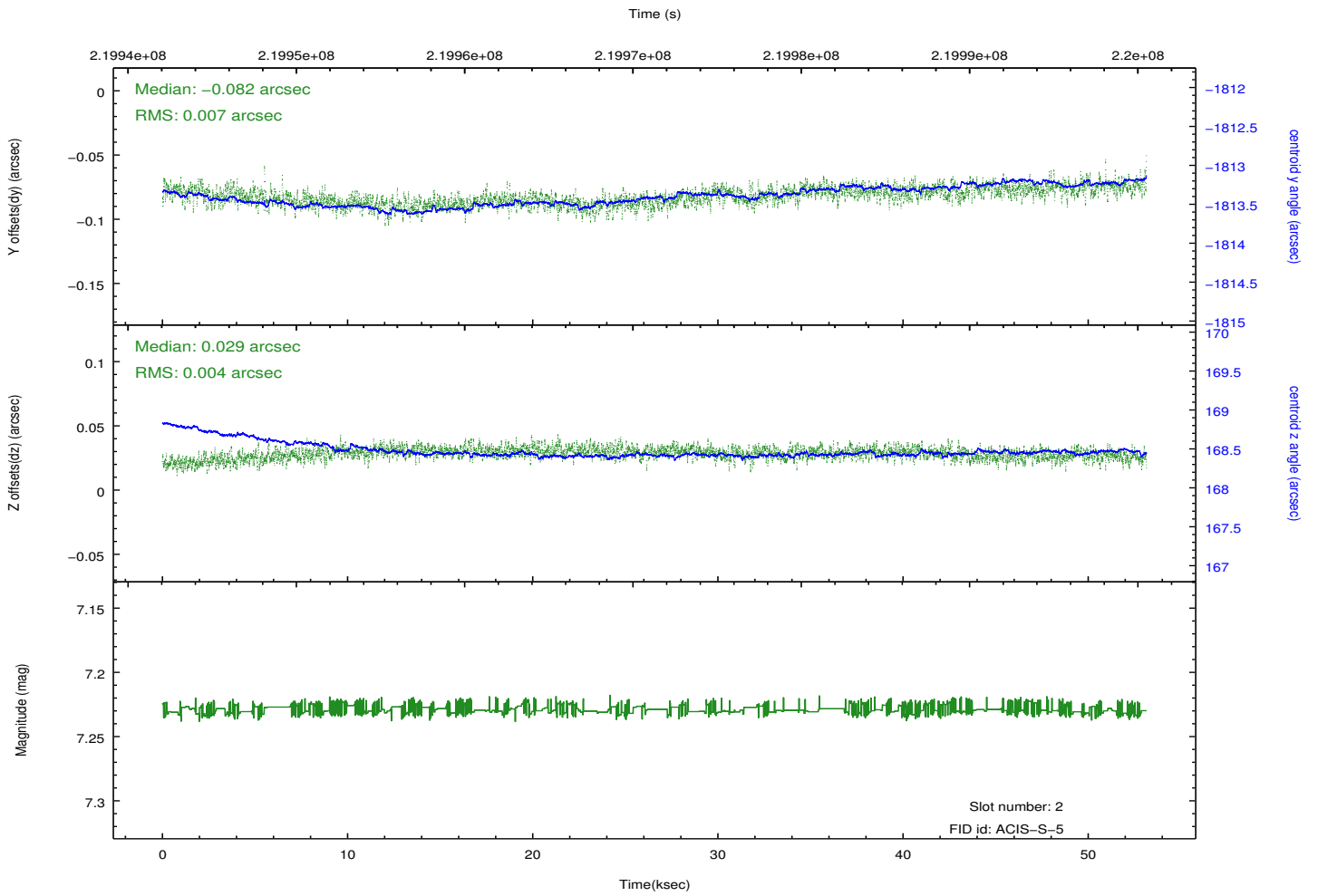
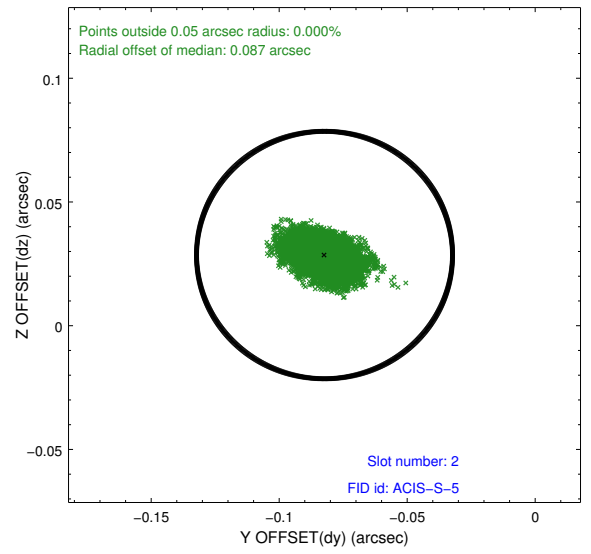
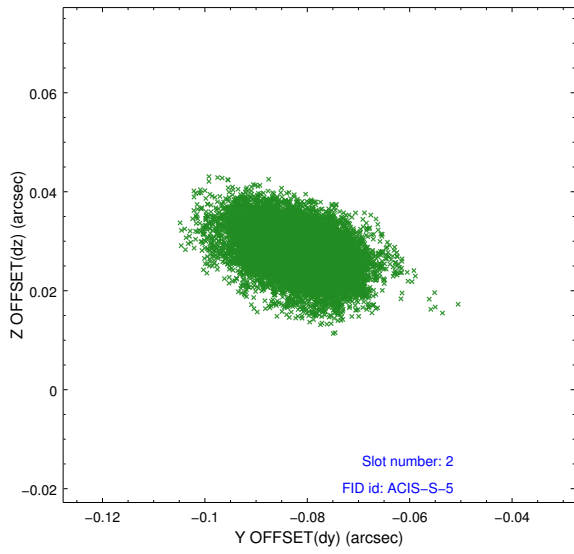
2.5.1 Slot 0



2.5.2 Slot 1



2.5.3 Slot 2



A Summary

A.1 Status

V&V Scientist	Beth Sundheim
V&V Date (YYYY-MM-DD)	2013.01.04
V&V Edition	1
V&V Disposition and Status	OK
V&V Charge Time	53.14019

A.2 Comments