

# V&V Reference Report

## L2 ASCDS Version : 8.5.1

Observation 5604 - L2 Version 3  
Chandra X-Ray Center

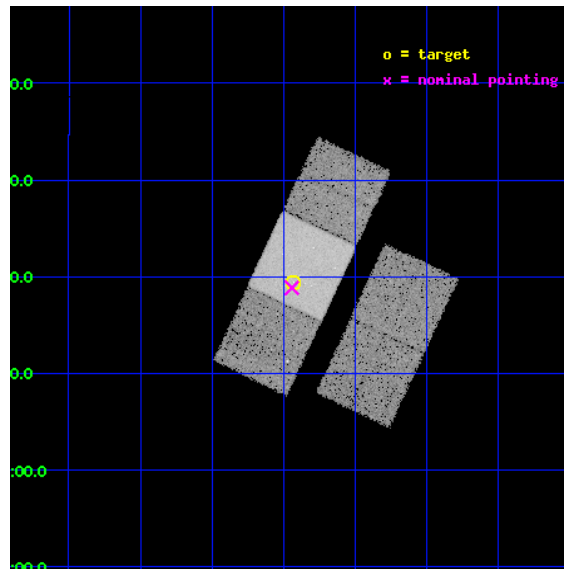
L2 Processing Date : Dec 17 2012

## Contents

<b>1</b>	<b>Front</b>	<b>2</b>
<b>2</b>	<b>OBI</b>	<b>3</b>
2.1	OBI . . . . .	3
2.1.1	Images . . . . .	3
2.1.2	Bias . . . . .	3
2.1.3	Parameters . . . . .	4
2.1.4	Events . . . . .	4
2.2	Compared Parameters . . . . .	5
2.3	Aspect . . . . .	6
2.4	Star Slots . . . . .	9
2.4.1	Slot 3 . . . . .	9
2.4.2	Slot 4 . . . . .	10
2.4.3	Slot 5 . . . . .	11
2.4.4	Slot 6 . . . . .	12
2.4.5	Slot 7 . . . . .	13
2.5	FID Slots . . . . .	14
2.5.1	Slot 0 . . . . .	14
2.5.2	Slot 1 . . . . .	15
2.5.3	Slot 2 . . . . .	16
<b>A</b>	<b>Summary</b>	<b>17</b>
A.1	Status . . . . .	17
A.2	Comments . . . . .	17

# 1 Front

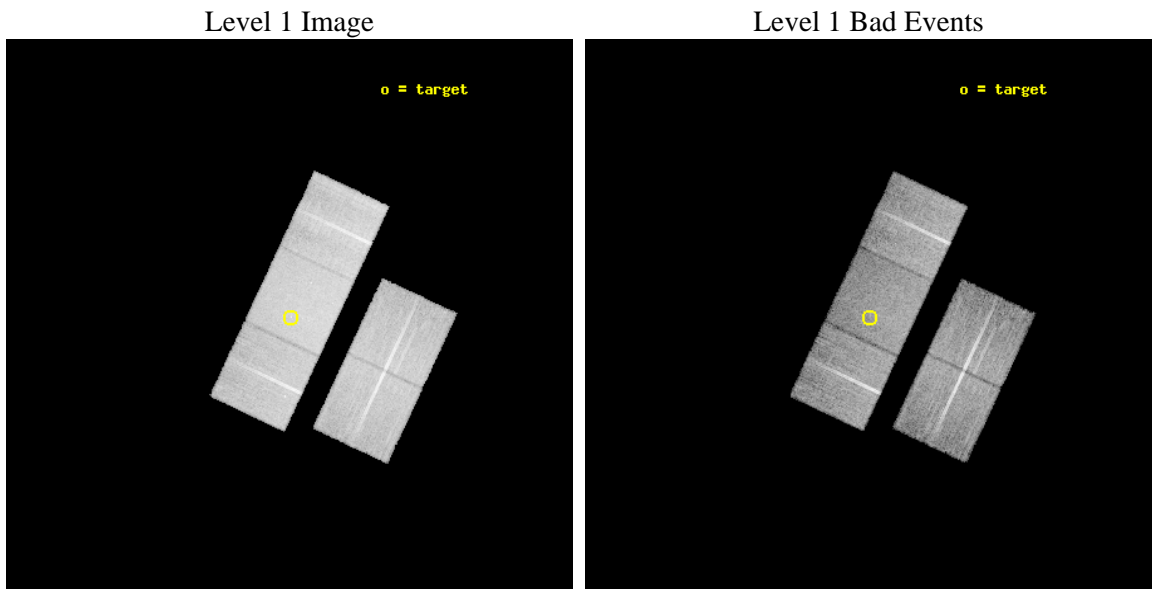
seq_num	701027	Sequence number
obs_id	5604	Observation id
title	A Study of Quasar Evolution With The Aid Of Lensing	Proposal title
observer	Professor Gordon Garmire	Principal investigator
object	SDSSJ0924+0219	Source name
dtcycle	0	&#160
cycle	P	events from which exps? Prim/Second/Both
ra_targ	141.232917	Observer's specified target RA [deg]
dec_targ	2.323583	Observer's specified target Dec [deg]
ra_nom	141.23544902026	Nominal RA [deg]
dec_nom	2.3142168116004	Nominal Dec [deg]
roll_nom	295.17811777518	Nominal Roll [deg]
revision	3	Processing version of data
ontime	18181.499965012	Sum of GTIs [s]
livetime	17943.945282944	Livetime [s]
ontime2	18178.358964831	Sum of GTIs [s]
ontime3	18178.358984768	Sum of GTIs [s]
ontime6	18181.499965012	Sum of GTIs [s]
ontime7	18181.499965012	Sum of GTIs [s]
ontime8	18178.358974755	Sum of GTIs [s]
l2events	130027	Number of level 2 events



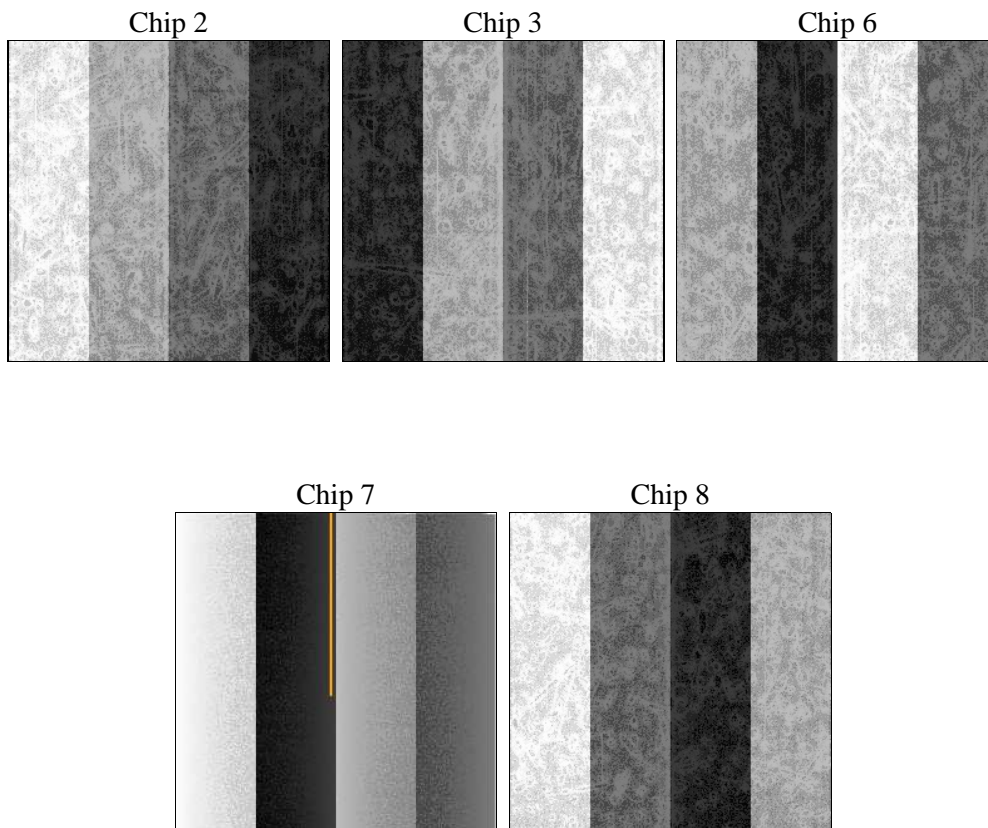
## 2 OBI

### 2.1 OBI

#### 2.1.1 Images



#### 2.1.2 Bias



### 2.1.3 Parameters

obi_num	1	Obi number	sched_exp_time	18000.000000	[s] Scheduled observation exposure time
ascdsver	8.5.1	Processing system revision	ontime	18181.499965012	Sum of GTIs [s]
caldbver	4.5.5	&#160	ontime2	18178.358964831	Sum of GTIs [s]
date	2012-12-17T19:13:54	Date and time of file creation	ontime3	18178.358984768	Sum of GTIs [s]
revision	3	Processing version of data	ontime6	18181.499965012	Sum of GTIs [s]
			ontime7	18181.499965012	Sum of GTIs [s]
			ontime8	18178.358974755	Sum of GTIs [s]
			l1events	814747	Number of level 1 events

### 2.1.4 Events

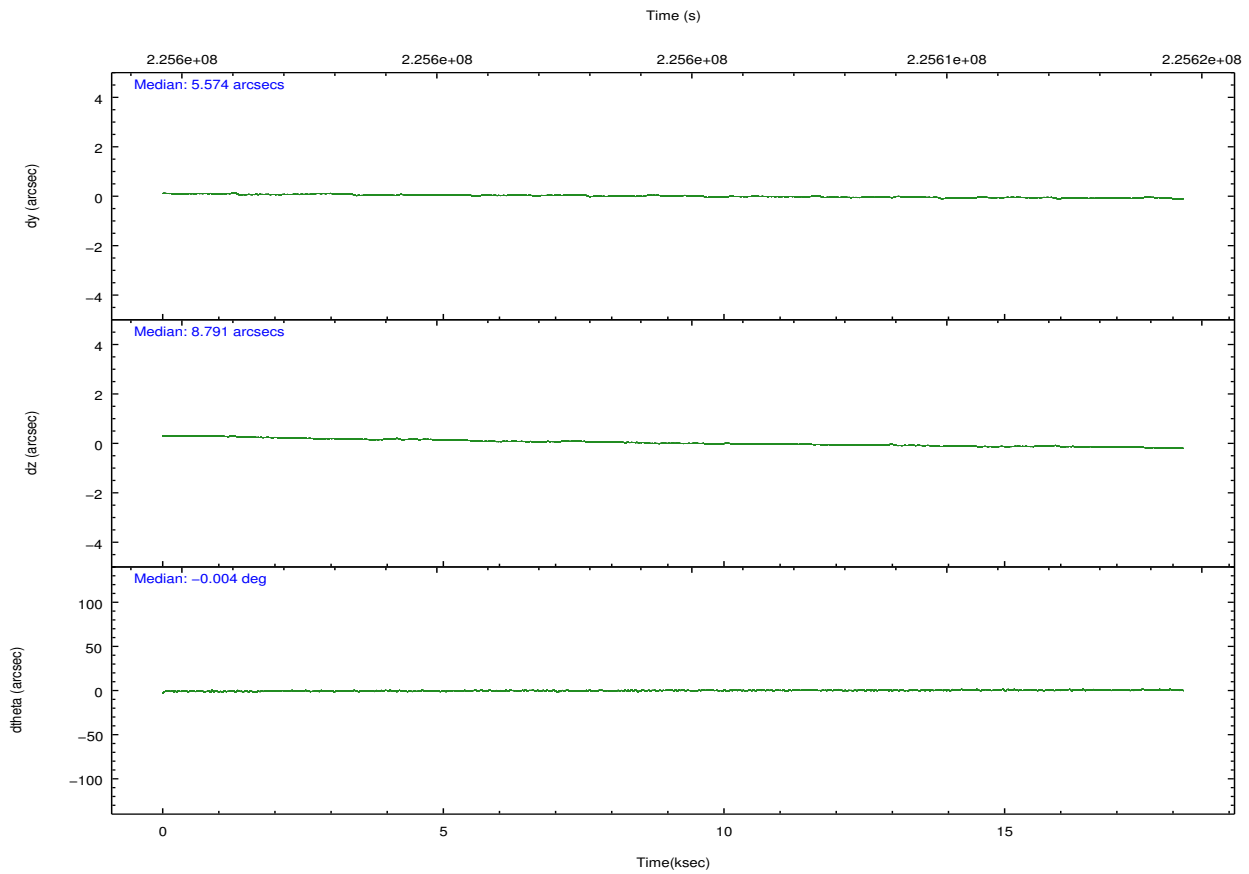
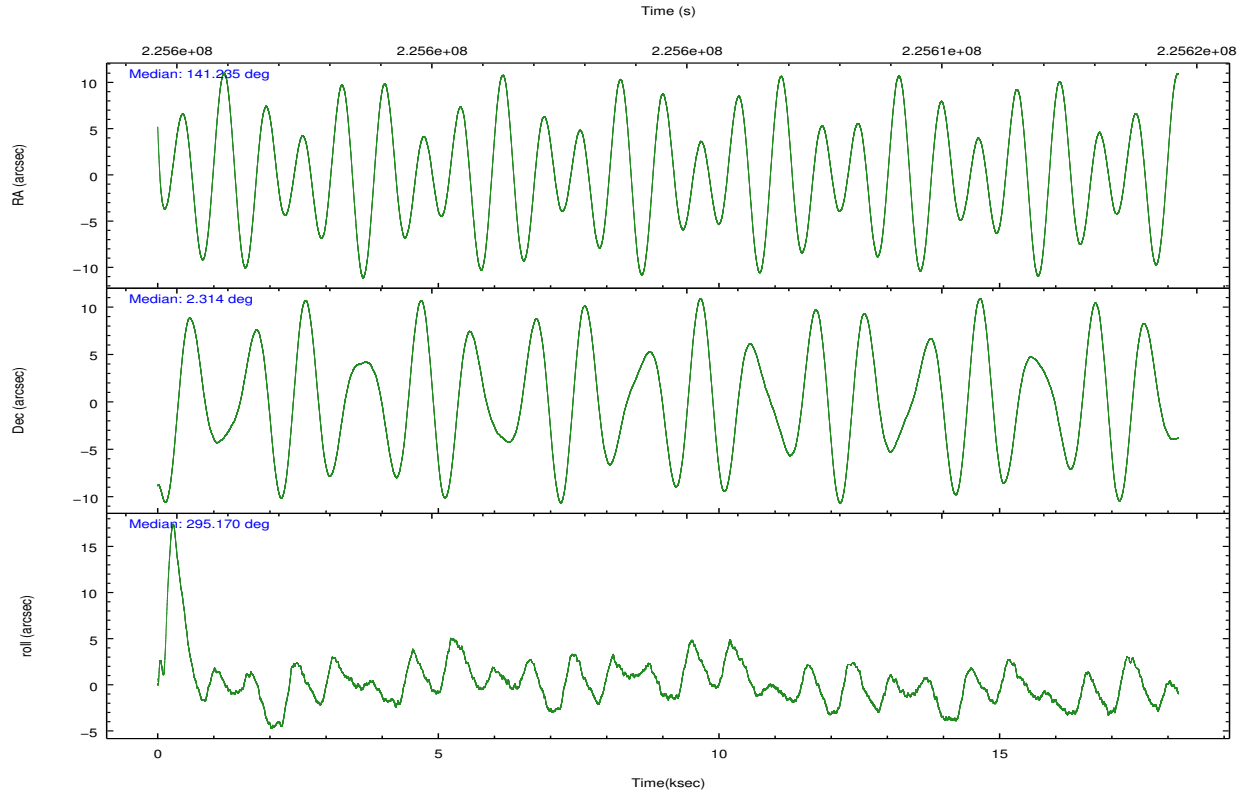
	ccd 2	ccd 3	ccd 6	ccd 7	ccd 8
level 1 events	142593	142082	149099	195863	185110
rejected events	126913	126577	132710	121351	148944
rejected %	89%	89%	89%	61%	80%

	ccd 2	ccd 3	ccd 6	ccd 7	ccd 8
grade 0 events	7506	7090	7011	7235	12312
	5%	4%	4%	3%	6%
grade 1 events	83	82	62	193	125
	0%	0%	0%	0%	0%
grade 2 events	3526	3325	3747	16163	8578
	2%	2%	2%	8%	4%
grade 3 events	1647	1730	1700	7269	4148
	1%	1%	1%	3%	2%
grade 4 events	1622	1729	1648	7096	3895
	1%	1%	1%	3%	2%
grade 5 events	5634	6675	6943	18802	8950
	3%	4%	4%	9%	4%
grade 6 events	2765	2895	3655	43123	10285
	1%	2%	2%	22%	5%
grade 7 events	119810	118556	124333	95982	136817
	84%	83%	83%	49%	73%

## 2.2 Compared Parameters

Parameter	Planned	Actual	Parameter	Planned	Actual
Instrument	ACIS	ACIS	Obspar format version number	7	7
Detector	ACIS-23678	ACIS-23678	Obspar file type	PREDICTED	ACTUAL
Grating	NONE	NONE	Obspar update status	NONE	UPDATED
Data mode	VFAINT	VFAINT	Number of optional ACIS chips dropped	0	0
Observation mode	POINTING	POINTING	On-chip summing requested	N	N
[deg] Pointing RA	141.212851	141.235449020263	Subarray requested	NONE	NONE
[deg] Pointing Dec	2.329489	2.314216811600364	Alternating exposures requested	N	N
[deg] Pointing Roll	295.022410	295.1781177751835	[s] Primary exposure time	0.000000	3.1
[mm] SIM focus pos	-0.684267	-0.6828225247311905			
[mm] SIM defocus	0	0.001444936568705701			
[mm] SIM translation stage pos	-190.132523	-190.1425803651734			
[mm] SIM translation stage offset	0	0.01005778216563158			
[s] Observation start time (MET)	225595722.184000	225593943.34791			
Observation start date	2005-02-24T01:27:38	2005-02-24T00:59:03			
[s] Observation end time (MET)	225613722.184000	225615419.66138			
Observation end date	2005-02-24T06:27:38	2005-02-24T06:56:59			
Read mode	TIMED	TIMED			

## 2.3 Aspect

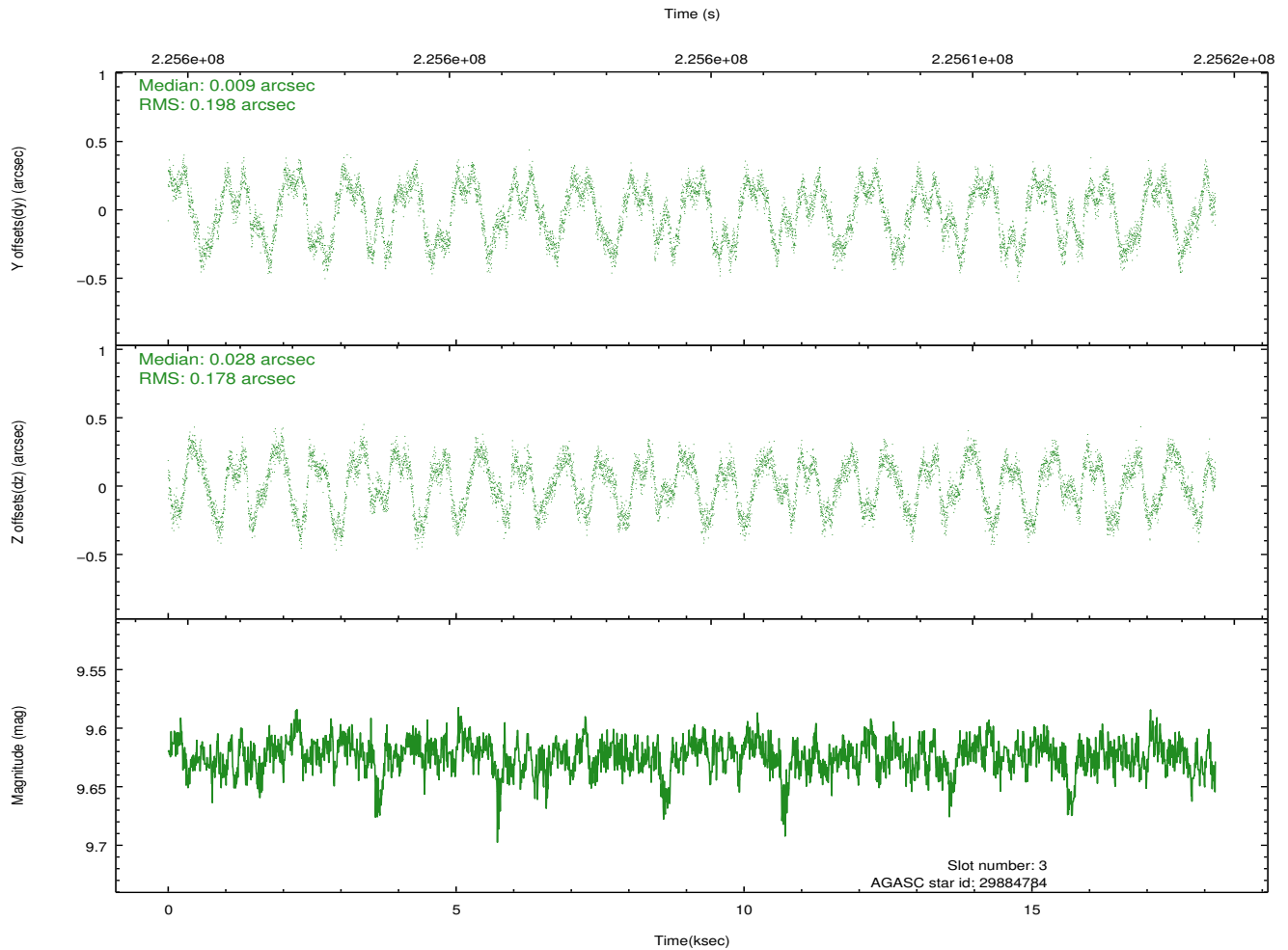
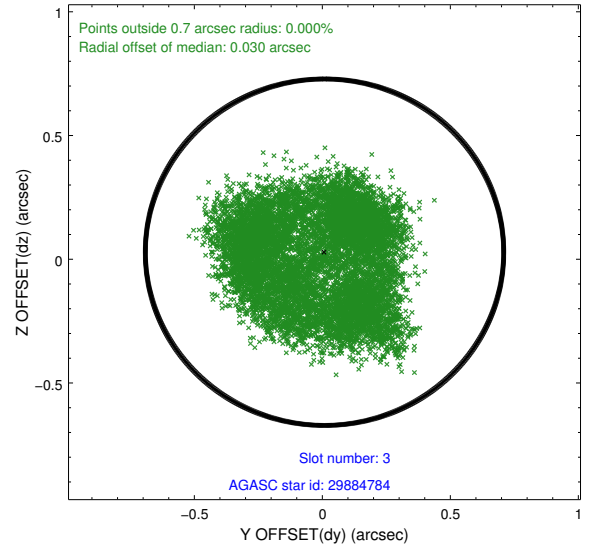
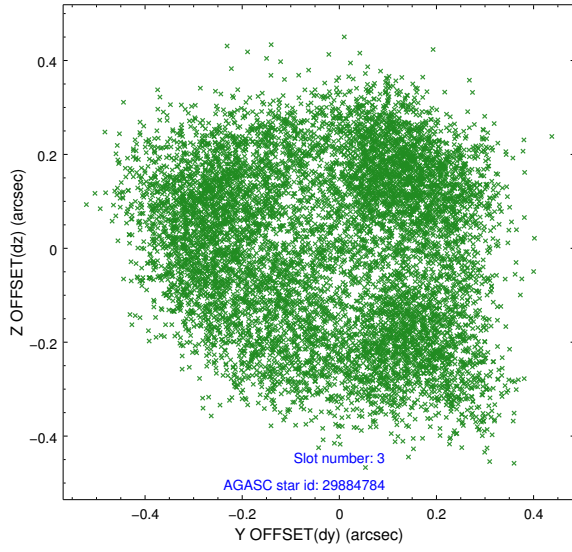


### Slot Statistics

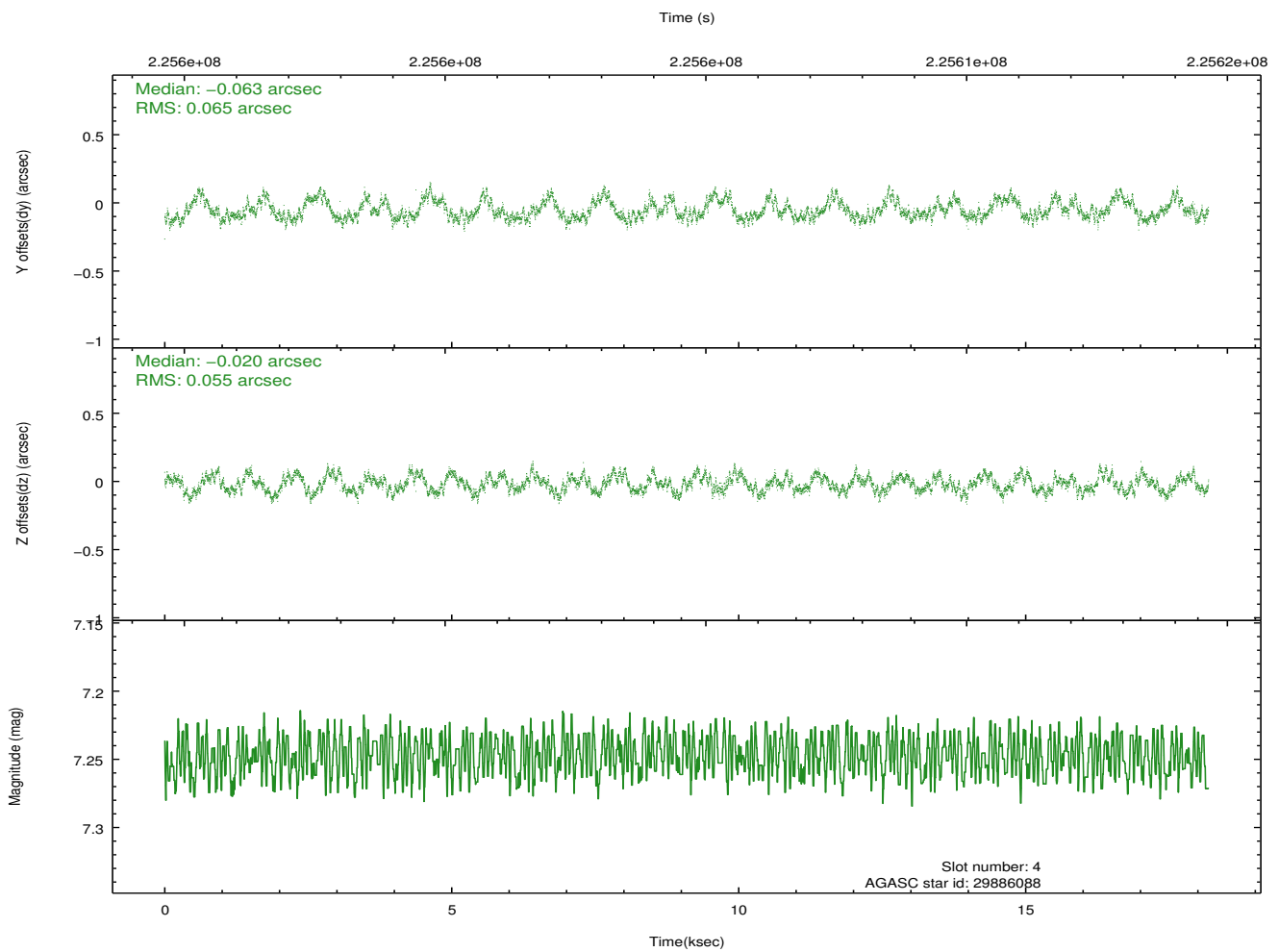
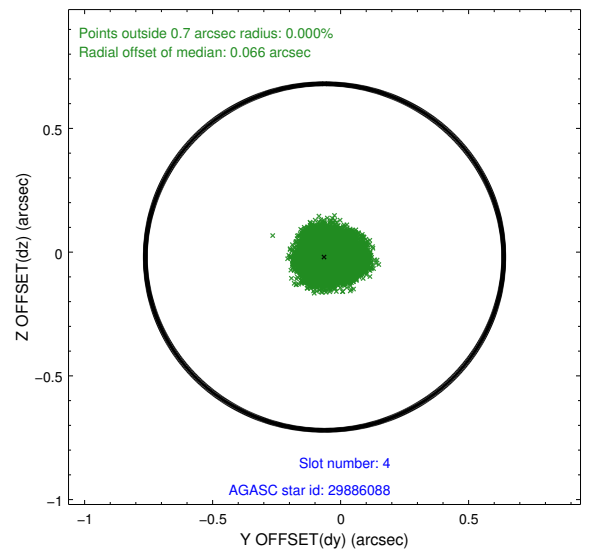
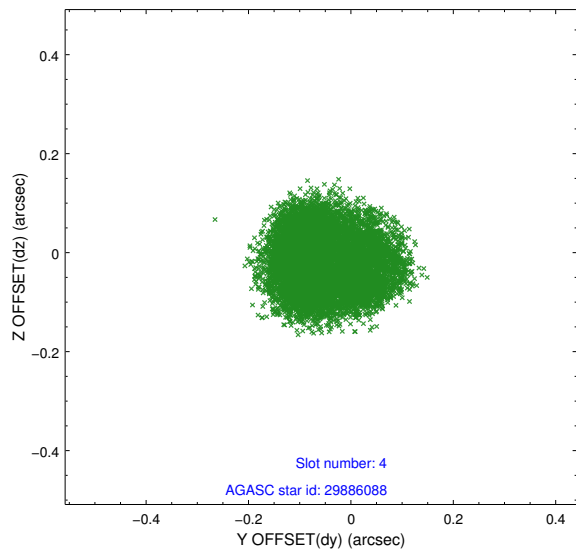
slot	status	id	mag	n_pts	med_dy	med_dz	dr1	dr2	ra	dec	mean_y	mean_z
0	FID	ACIS-S-2	7.11	4435	-0.055	-0.058	0.008	0.012	0.000000	0.000000	-758.35	-1730.04
1	FID	ACIS-S-4	7.21	4436	0.111	0.042	0.006	0.012	0.000000	0.000000	2155.00	178.30
2	FID	ACIS-S-5	7.23	4436	-0.088	0.025	0.007	0.011	0.000000	0.000000	-1810.93	172.22
3	GUIDE	29884784	9.62	8865	0.009	0.028	0.293	0.401	141.525924	2.331696	469.19	1024.04
4	GUIDE	29886088	7.25	8872	-0.063	-0.020	0.093	0.139	140.911389	2.409953	-720.95	-859.59
5	GUIDE	30288368	7.56	8873	-0.081	-0.077	0.120	0.180	141.501110	3.030300	-1848.29	2006.19
6	GUIDE	30288600	9.07	8870	0.081	-0.007	0.095	0.148	141.552019	2.678221	-621.91	1636.84
7	GUIDE	30290968	9.48	8866	0.065	0.096	0.096	0.153	140.928070	2.739309	-1769.98	-303.48

## 2.4 Star Slots

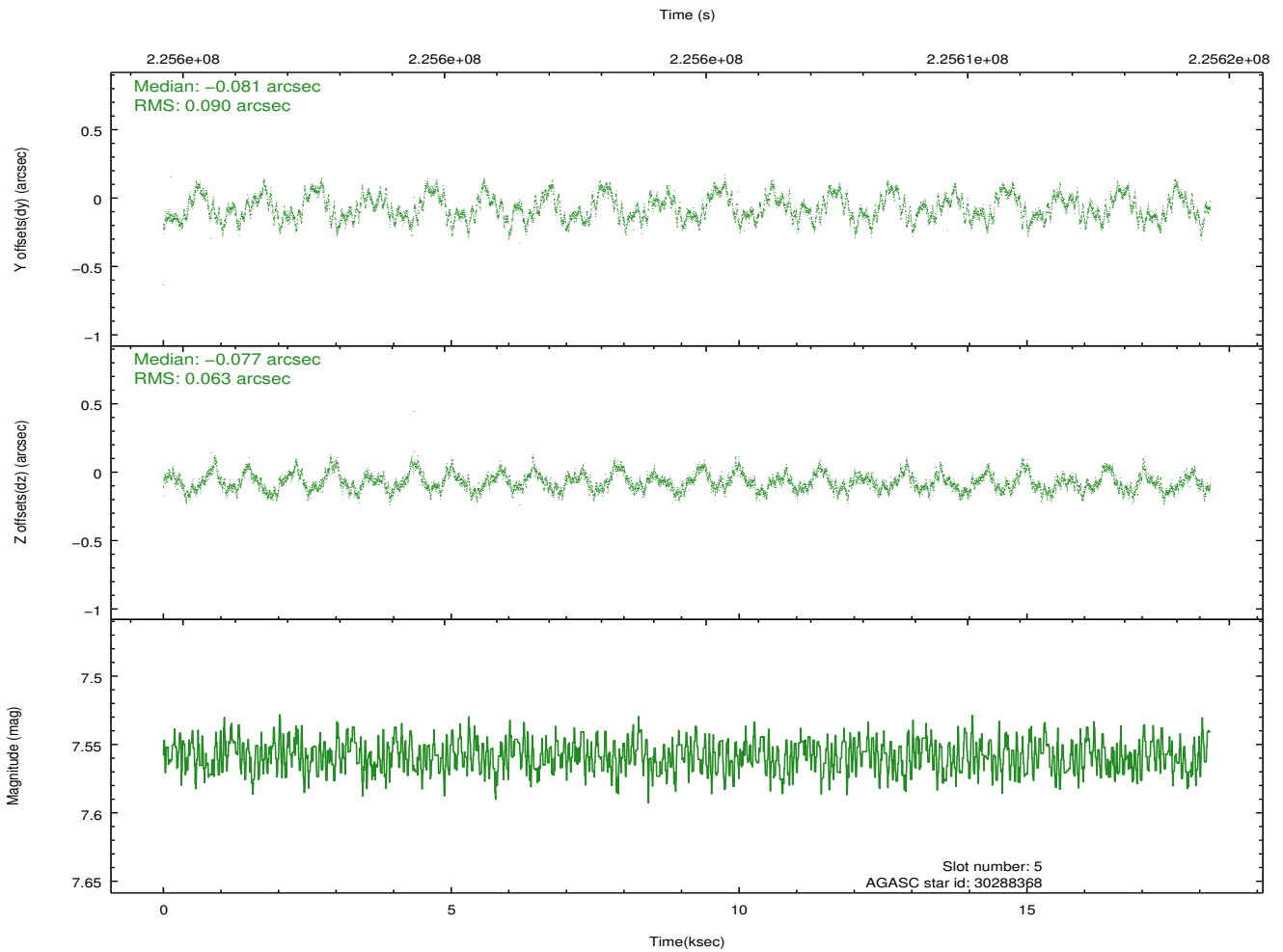
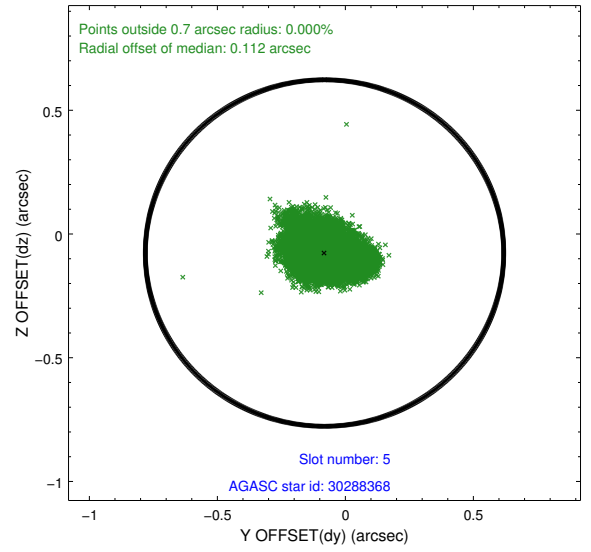
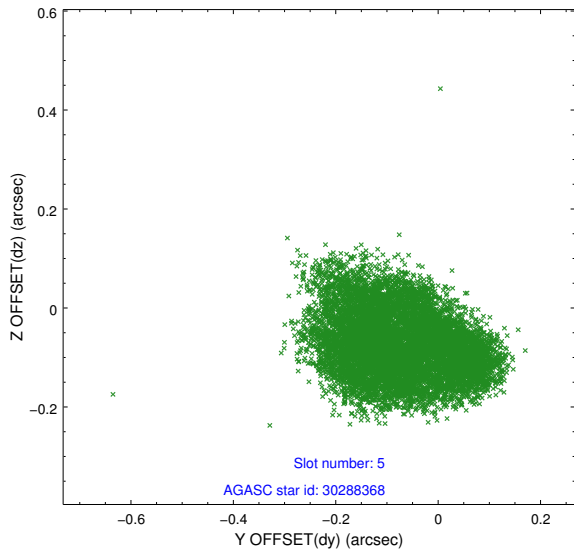
### 2.4.1 Slot 3



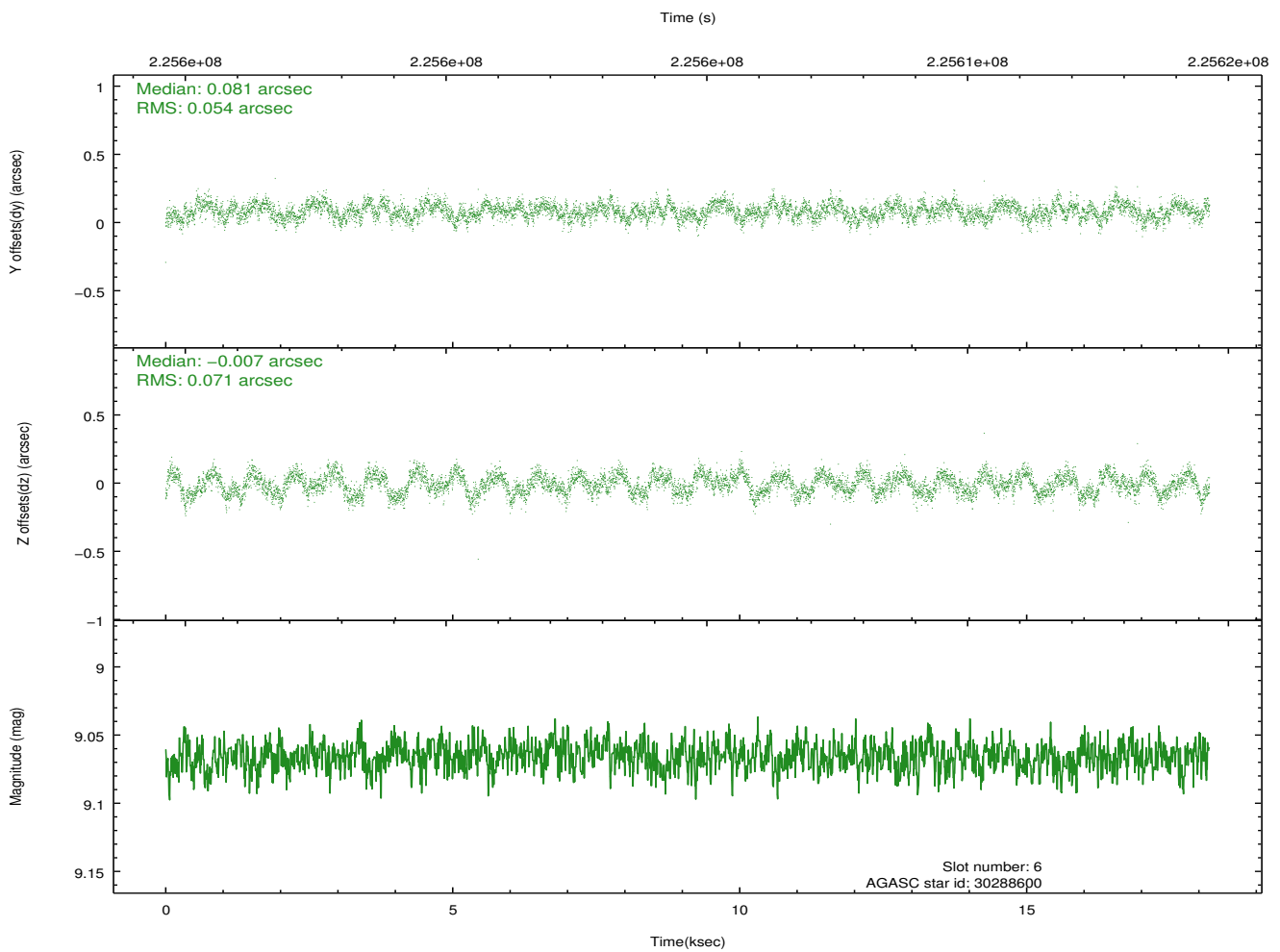
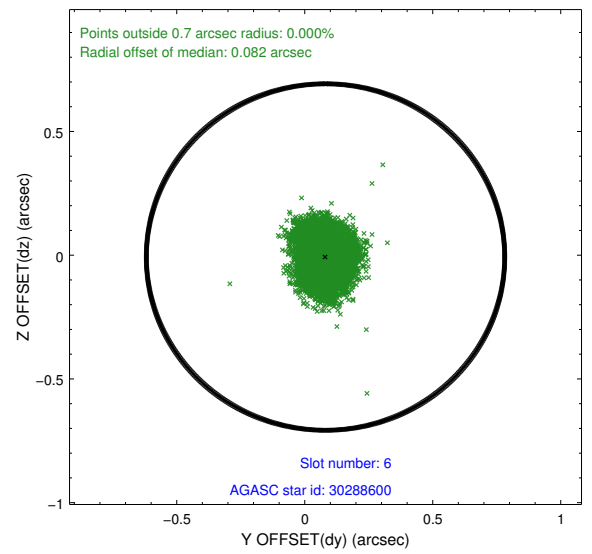
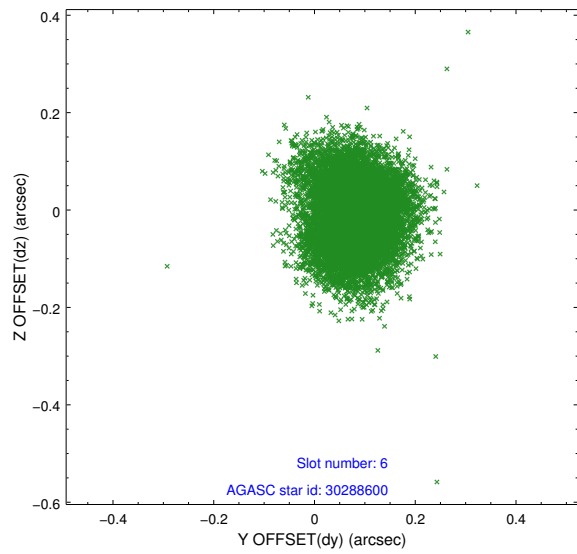
## 2.4.2 Slot 4



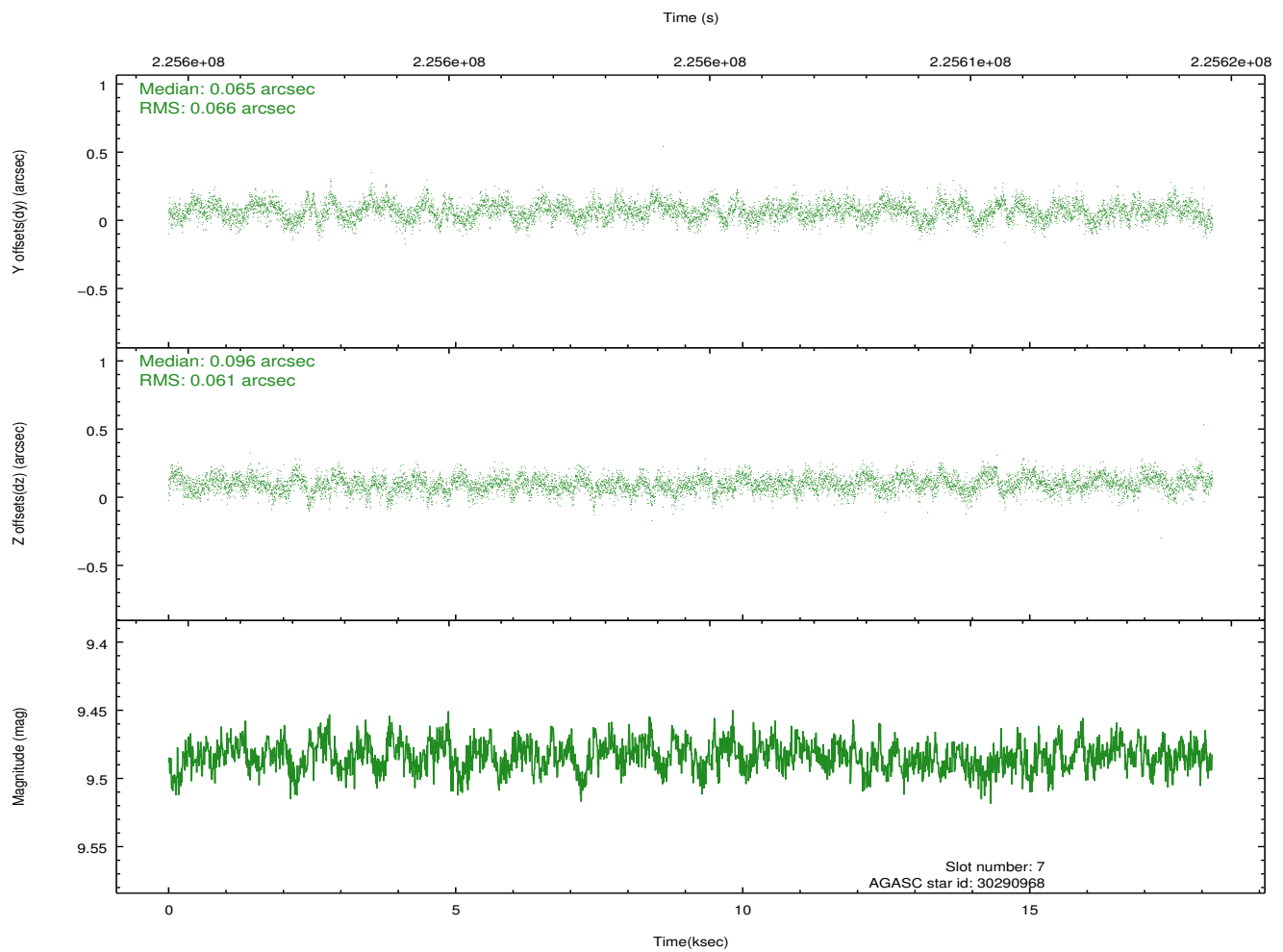
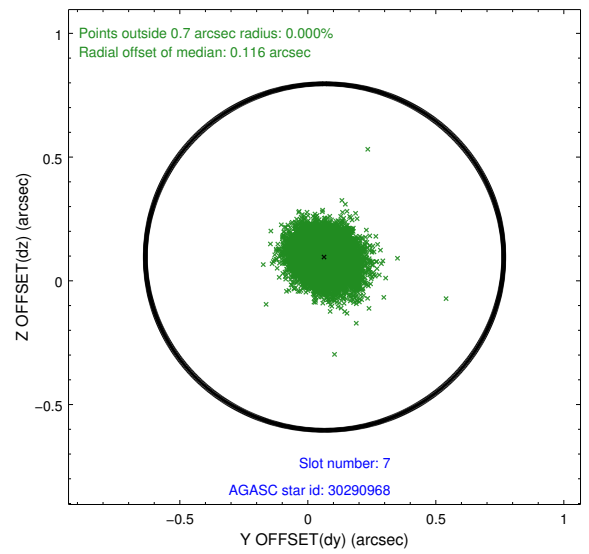
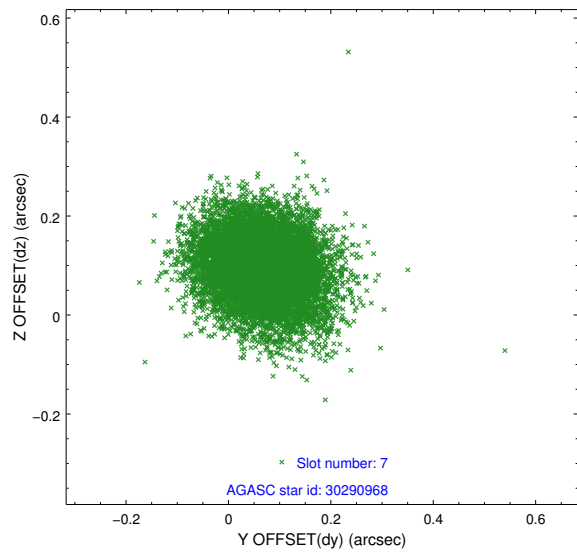
### 2.4.3 Slot 5



## 2.4.4 Slot 6

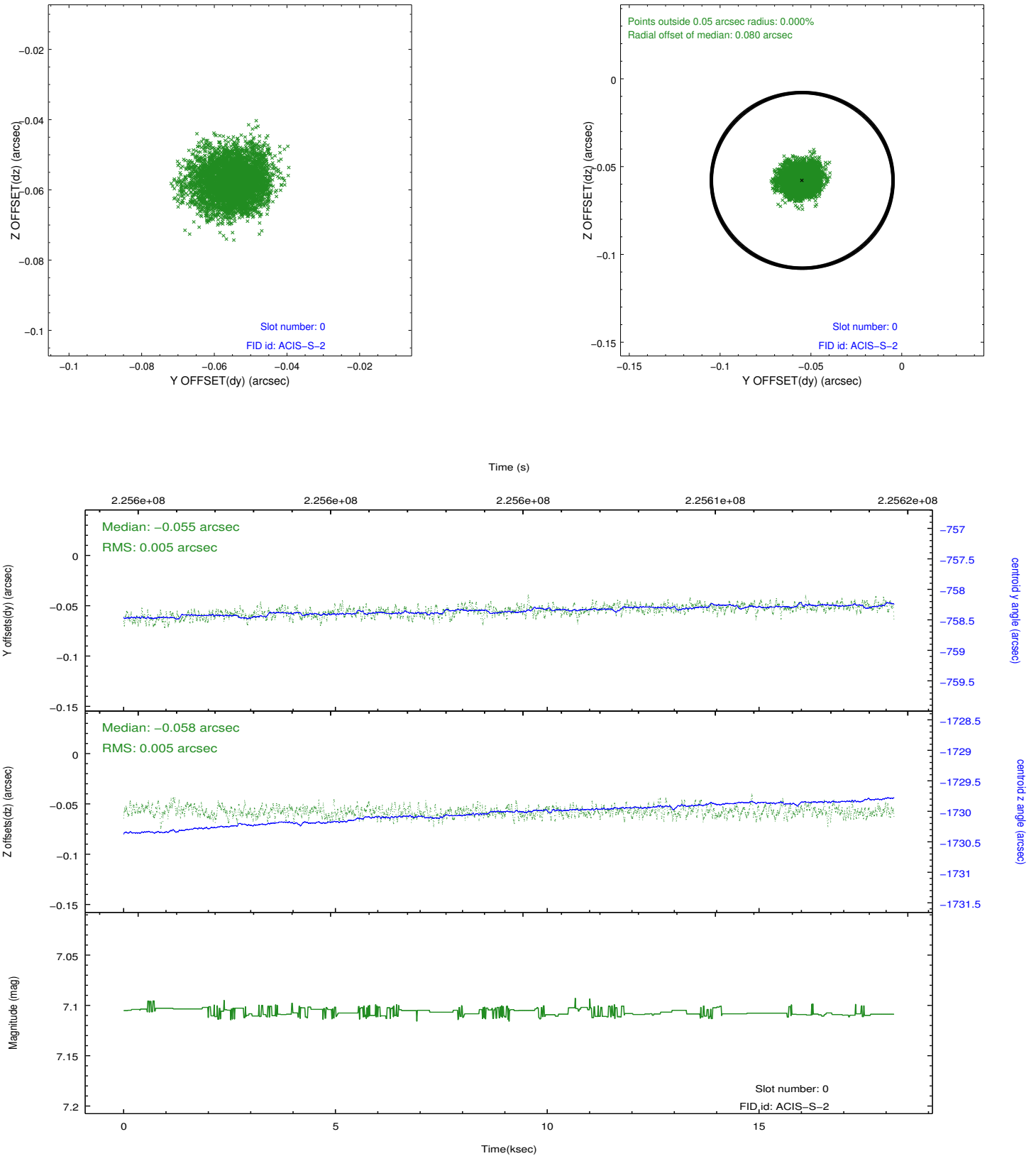


## 2.4.5 Slot 7

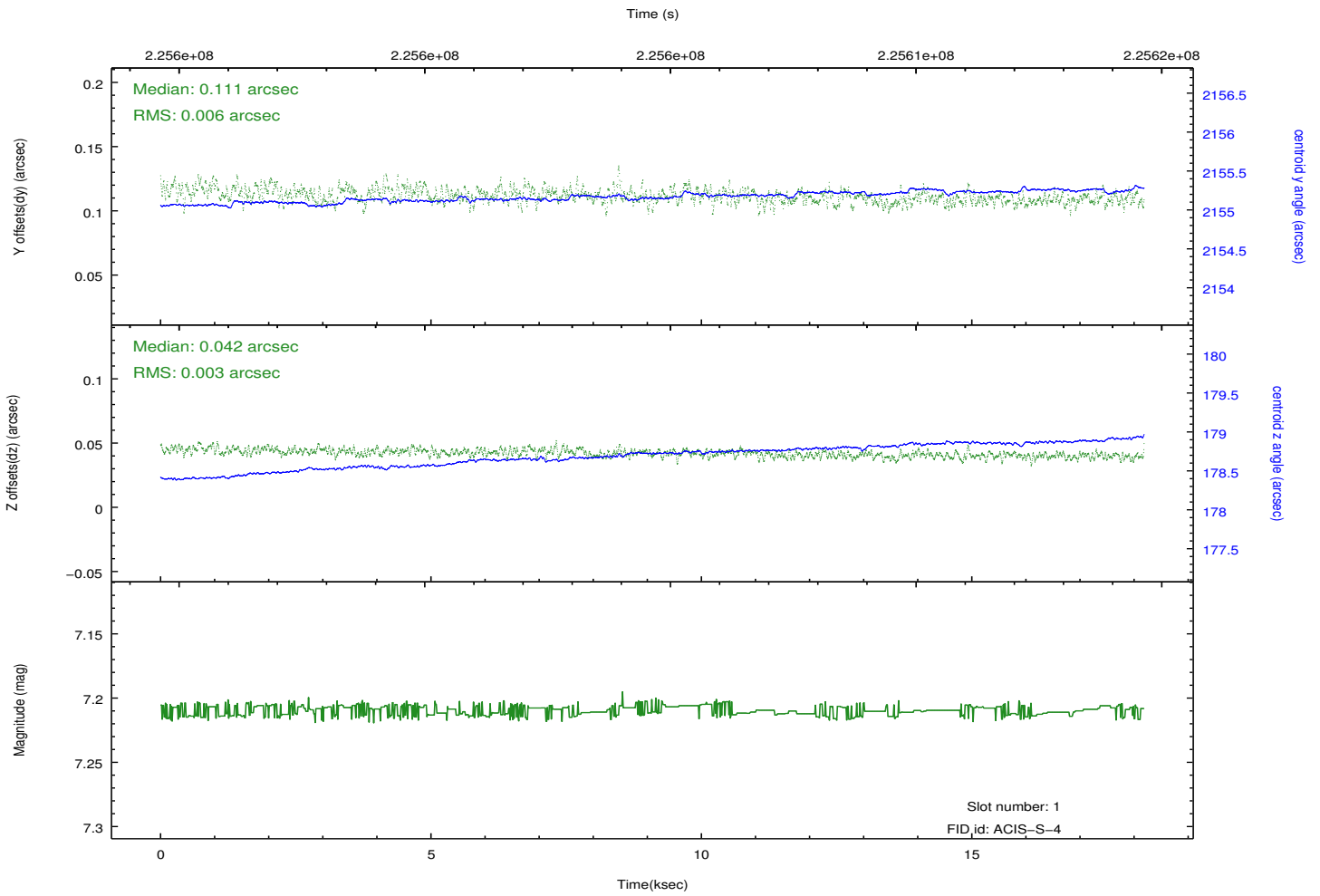
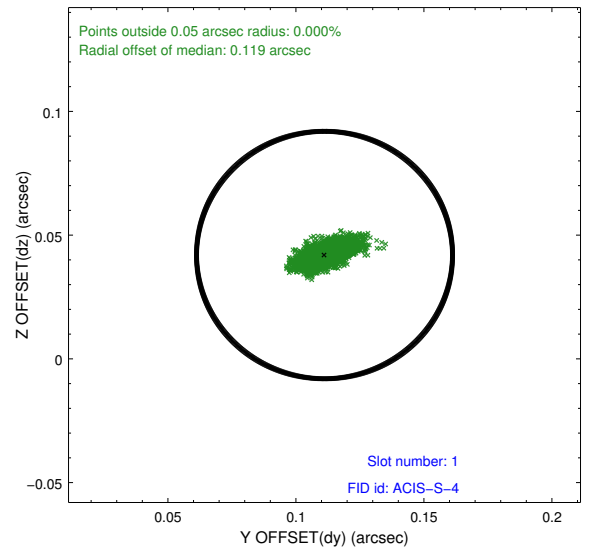
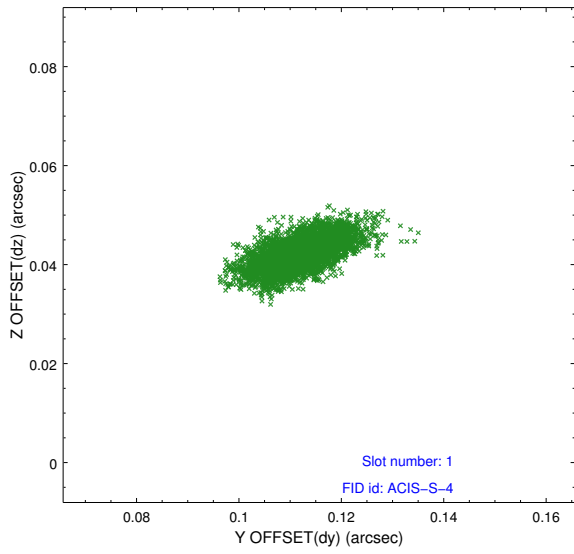


## 2.5 FID Slots

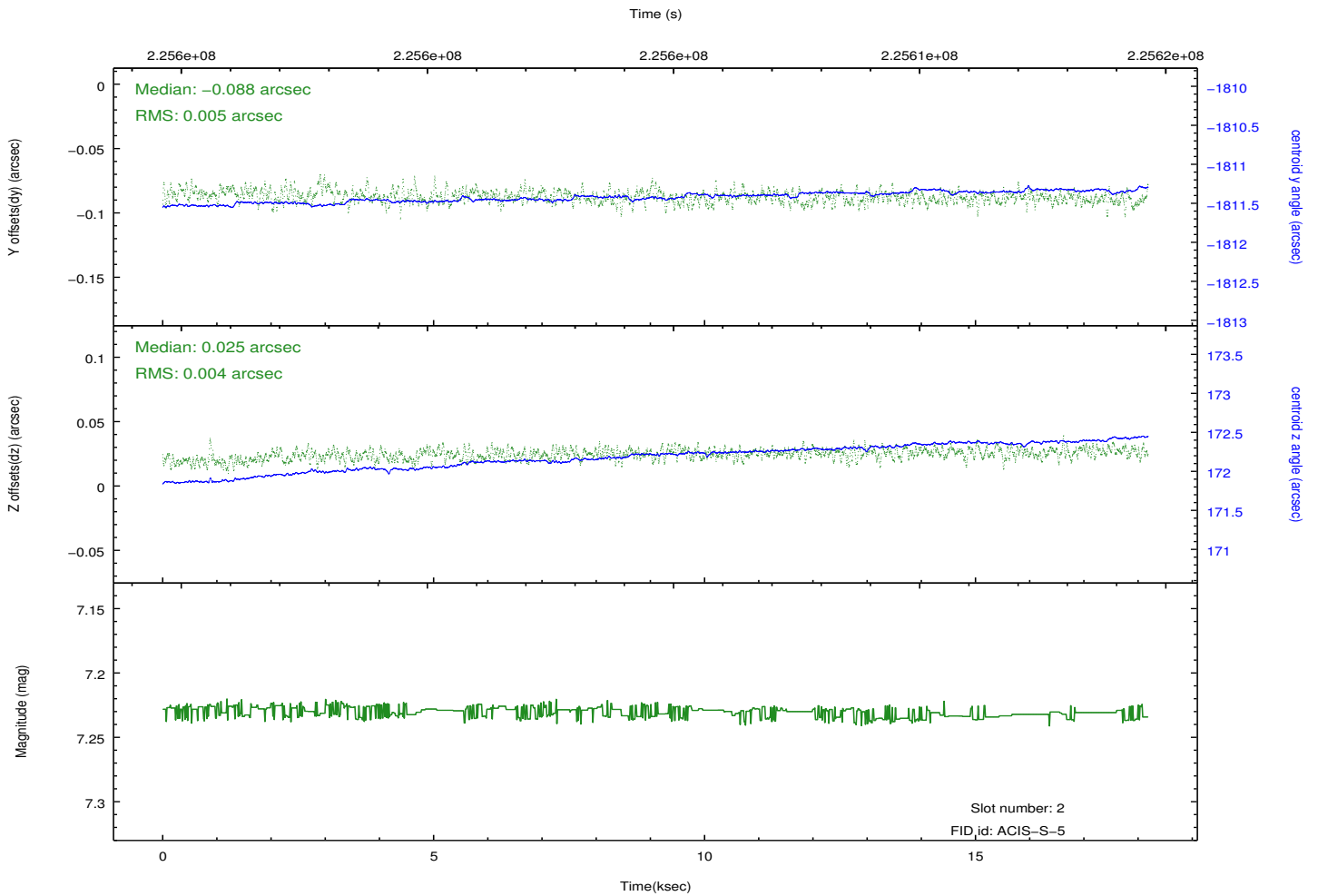
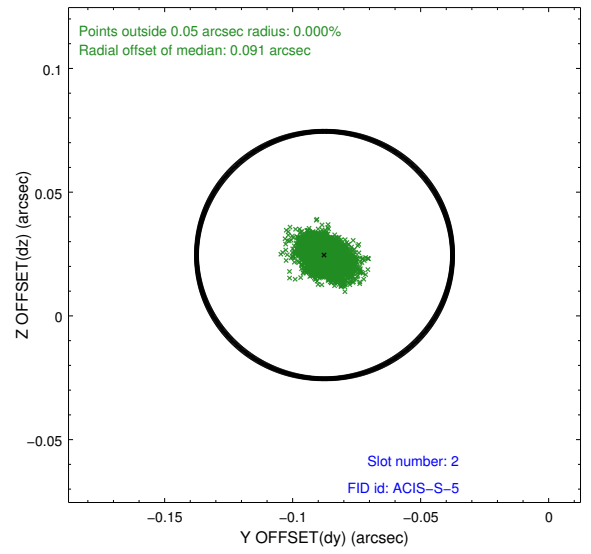
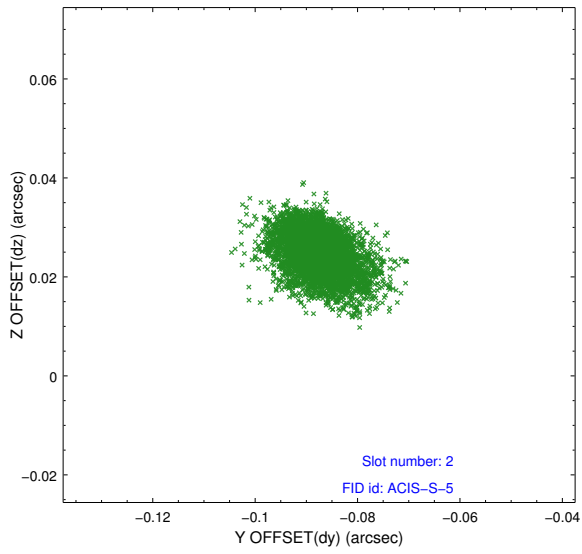
### 2.5.1 Slot 0



## 2.5.2 Slot 1



### 2.5.3 Slot 2



# A Summary

## A.1 Status

V&V Scientist	Jen Lauer
V&V Date (YYYY-MM-DD)	2013.01.10
V&V Edition	1
V&V Disposition and Status	OK
V&V Charge Time	18.18149

## A.2 Comments