

# V&V Reference Report

## L2 ASCDS Version : 8.5

Observation 5774 - L2 Version 3  
Chandra X-Ray Center

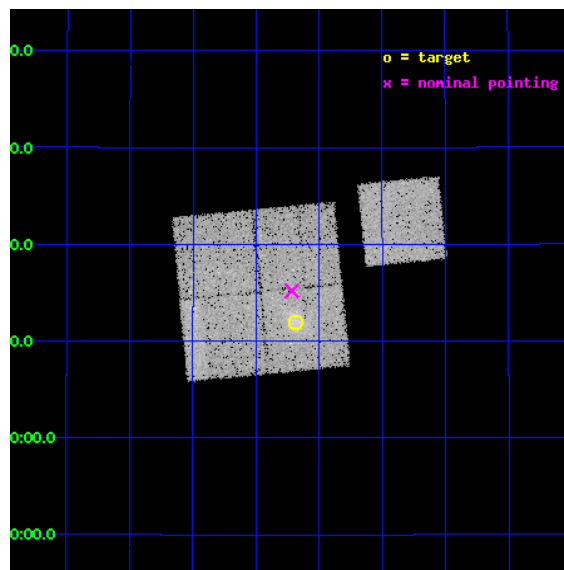
L2 Processing Date : Dec 12 2012

## Contents

<b>1</b>	<b>Front</b>	<b>2</b>
<b>2</b>	<b>OBI</b>	<b>3</b>
2.1	OBI . . . . .	3
2.1.1	Images . . . . .	3
2.1.2	Bias . . . . .	3
2.1.3	Parameters . . . . .	4
2.1.4	Events . . . . .	4
2.2	Compared Parameters . . . . .	5
2.3	Aspect . . . . .	6
2.4	Star Slots . . . . .	9
2.4.1	Slot 3 . . . . .	9
2.4.2	Slot 4 . . . . .	10
2.4.3	Slot 5 . . . . .	11
2.4.4	Slot 6 . . . . .	12
2.4.5	Slot 7 . . . . .	13
2.5	FID Slots . . . . .	14
2.5.1	Slot 0 . . . . .	14
2.5.2	Slot 1 . . . . .	15
2.5.3	Slot 2 . . . . .	16
<b>A</b>	<b>Summary</b>	<b>17</b>
A.1	Status . . . . .	17
A.2	Comments . . . . .	17

# 1 Front

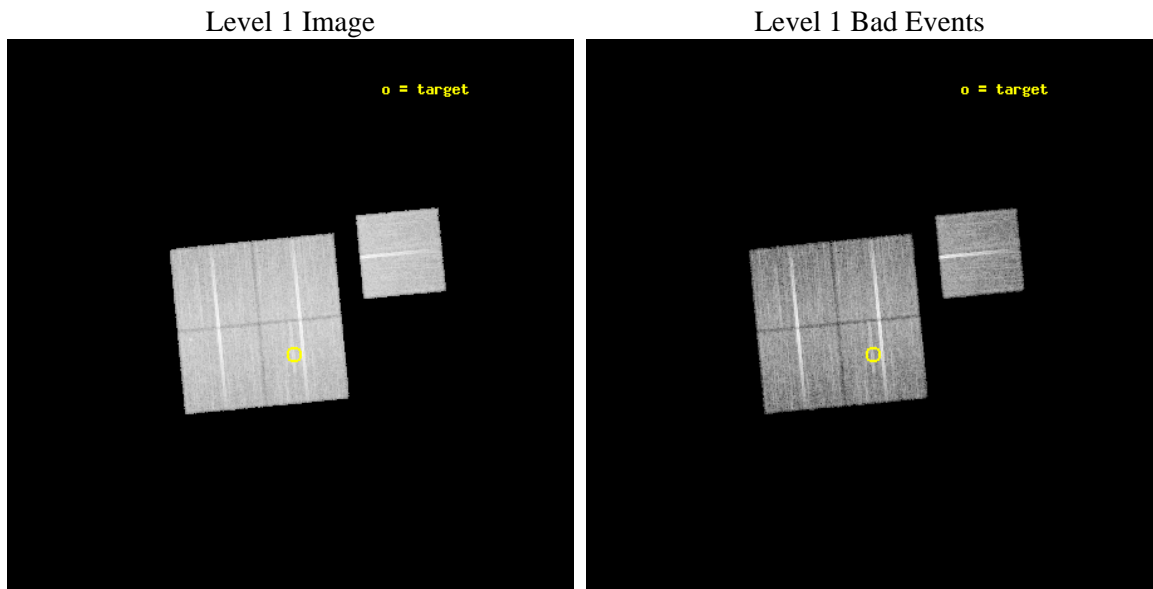
seq_num	800487	Sequence number
obs_id	5774	Observation id
title	Chandra observations of high-redshift clusters of galaxies from the 400 Square Degrees ROSAT PSPC survey	Proposal title
observer	Dr. Stephen Murray	Principal investigator
object	cl0809+2811	Source name
dtcycle	0	&#160
cycle	P	events from which exps? Prim/Second/Both
ra_targ	122.420833	Observer's specified target RA [deg]
dec_targ	28.199444	Observer's specified target Dec [deg]
ra_nom	122.42897522392	Nominal RA [deg]
dec_nom	28.253273842381	Nominal Dec [deg]
roll_nom	84.480972056082	Nominal Roll [deg]
revision	3	Processing version of data
ontime	19942.258961499	Sum of GTIs [s]
livetime	19681.698666889	Livetime [s]
ontime0	19939.118001133	Sum of GTIs [s]
ontime1	19942.258971363	Sum of GTIs [s]
ontime2	19942.258961469	Sum of GTIs [s]
ontime3	19942.258961499	Sum of GTIs [s]
ontime6	19939.118001133	Sum of GTIs [s]
l2events	73490	Number of level 2 events



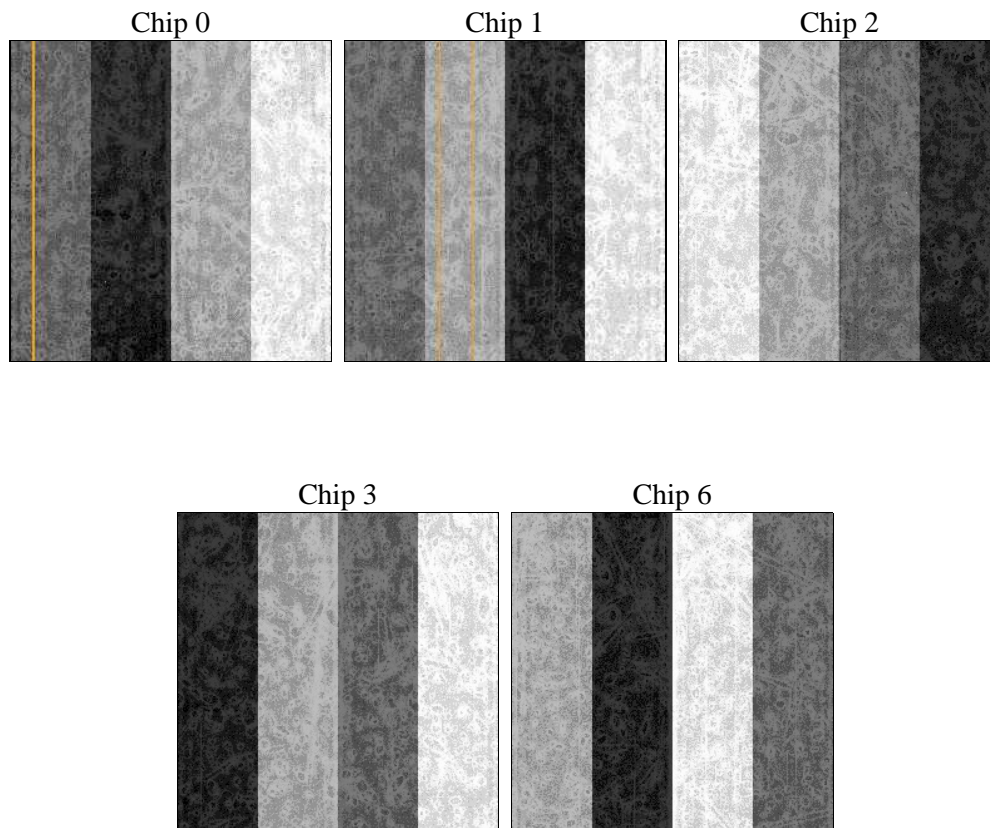
## 2 OBI

### 2.1 OBI

#### 2.1.1 Images



#### 2.1.2 Bias



### 2.1.3 Parameters

obi_num	0	Obi number	sched_exp_time	20000.000000	[s] Scheduled observation exposure time
ascdsver	8.5	Processing system revision	ontime	19942.258961499	Sum of GTIs [s]
caldbver	4.5.4	&#160	ontime0	19939.118001133	Sum of GTIs [s]
date	2012-12-12T11:36:47	Date and time of file creation	ontime1	19942.258971363	Sum of GTIs [s]
revision	3	Processing version of data	ontime2	19942.258961469	Sum of GTIs [s]
			ontime3	19942.258961499	Sum of GTIs [s]
			ontime6	19939.118001133	Sum of GTIs [s]
			l1events	653675	Number of level 1 events

### 2.1.4 Events

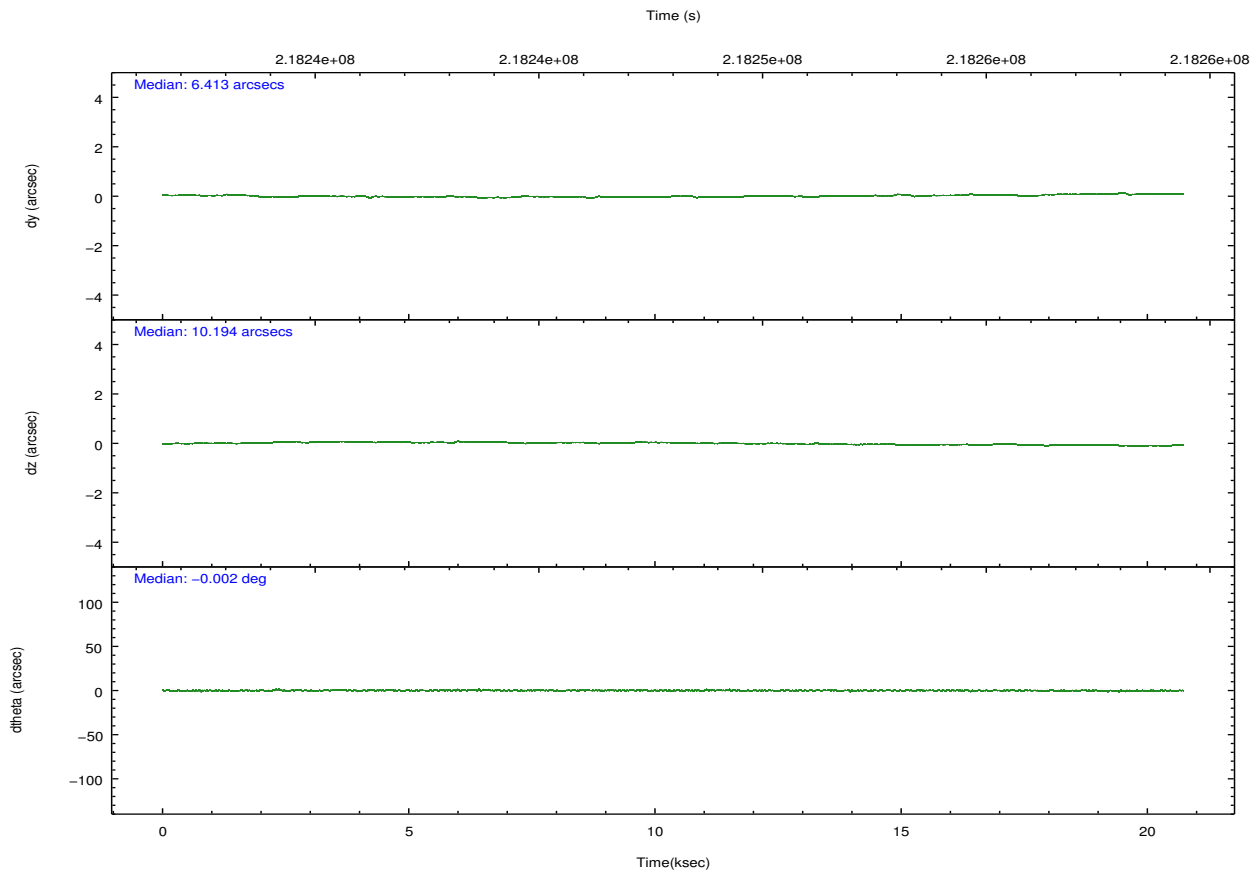
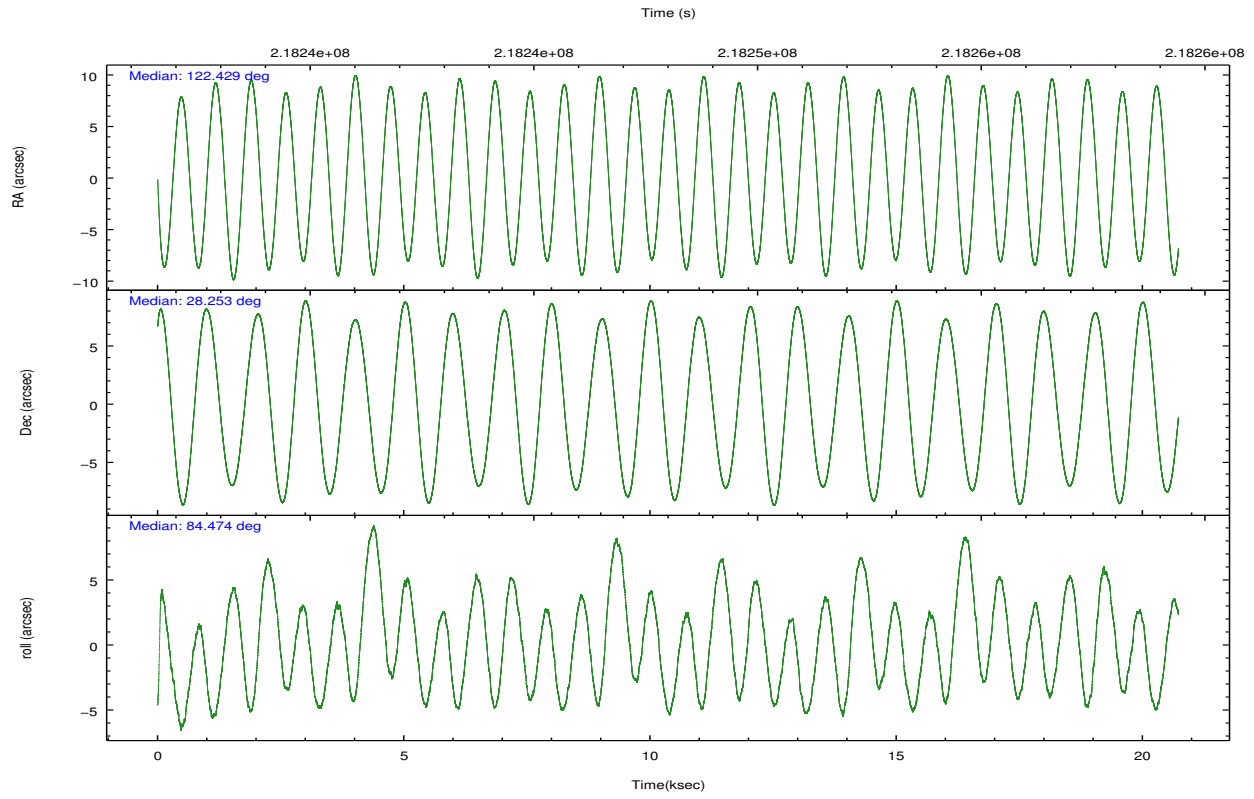
	ccd 0	ccd 1	ccd 2	ccd 3	ccd 6
level 1 events	125077	126583	135319	135025	131671
rejected events	109009	108070	119586	117095	114286
rejected %	87%	85%	88%	86%	86%

	ccd 0	ccd 1	ccd 2	ccd 3	ccd 6
grade 0 events	6812	8352	6790	8675	7677
	5%	6%	5%	6%	5%
grade 1 events	72	69	96	70	75
	0%	0%	0%	0%	0%
grade 2 events	3394	3629	3243	3227	3265
	2%	2%	2%	2%	2%
grade 3 events	1640	1671	1593	1630	1566
	1%	1%	1%	1%	1%
grade 4 events	1535	1704	1540	1585	1639
	1%	1%	1%	1%	1%
grade 5 events	4518	4706	4236	5049	4875
	3%	3%	3%	3%	3%
grade 6 events	2693	3162	2568	2819	3241
	2%	2%	1%	2%	2%
grade 7 events	104413	103290	115253	111970	109333
	83%	81%	85%	82%	83%

## 2.2 Compared Parameters

Parameter	Planned	Actual	Parameter	Planned	Actual
Instrument	ACIS	ACIS	Obspar format version number	7	7
Detector	ACIS-01236	ACIS-01236	Obspar file type	PREDICTED	ACTUAL
Grating	NONE	NONE	Obspar update status	NONE	UPDATED
Data mode	VFAINT	VFAINT	Number of optional ACIS chips dropped	0	0
Observation mode	POINTING	POINTING	On-chip summing requested	N	N
[deg] Pointing RA	122.441998	122.4289752239188	Subarray requested	NONE	NONE
[deg] Pointing Dec	28.228395	28.25327384238146	Alternating exposures requested	N	N
[deg] Pointing Roll	84.266117	84.48097205608227	[s] Primary exposure time	0.000000	3.1
[mm] SIM focus pos	-0.782348	-0.7809083437167272			
[mm] SIM defocus	0	0.001439871863259334			
[mm] SIM translation stage pos	-225.840463	-225.8433433320239			
[mm] SIM translation stage offset	-7.752	-7.749109670905796			
[s] Observation start time (MET)	218238365.184000	218237163.36602			
Observation start date	2004-11-30T21:45:01	2004-11-30T21:26:03			
[s] Observation end time (MET)	218258365.184000	218259477.10452			
Observation end date	2004-12-01T03:18:21	2004-12-01T03:37:57			
Read mode	TIMED	TIMED			

## 2.3 Aspect

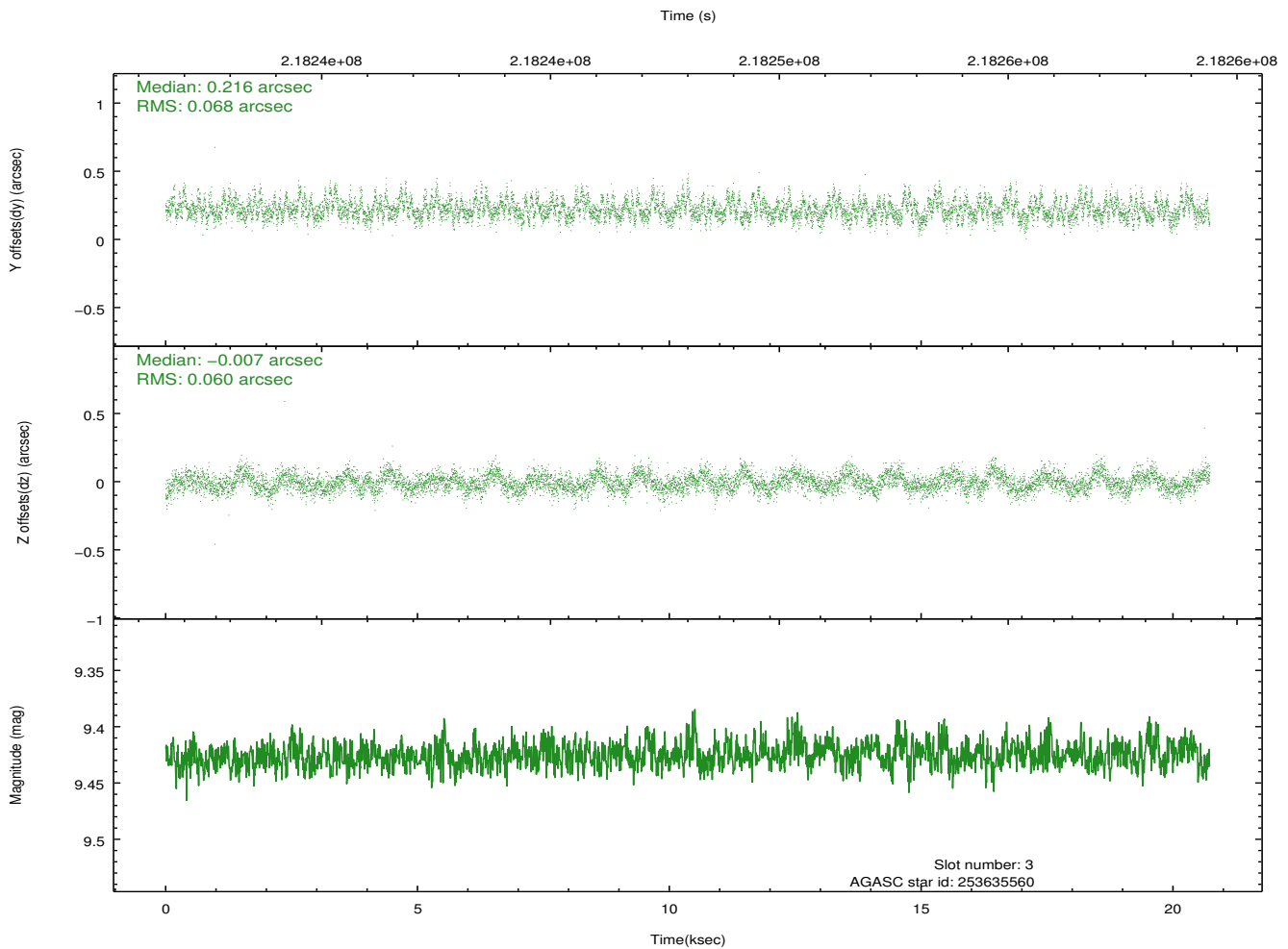
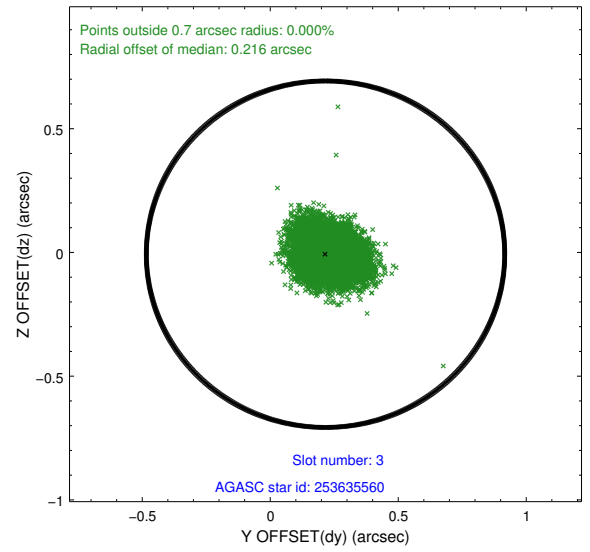
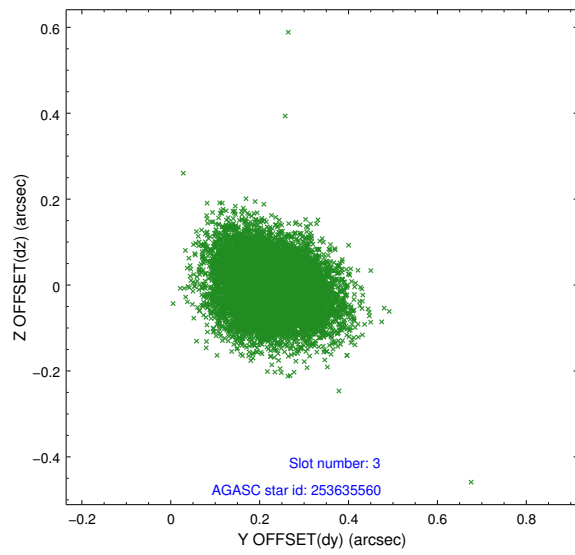


### Slot Statistics

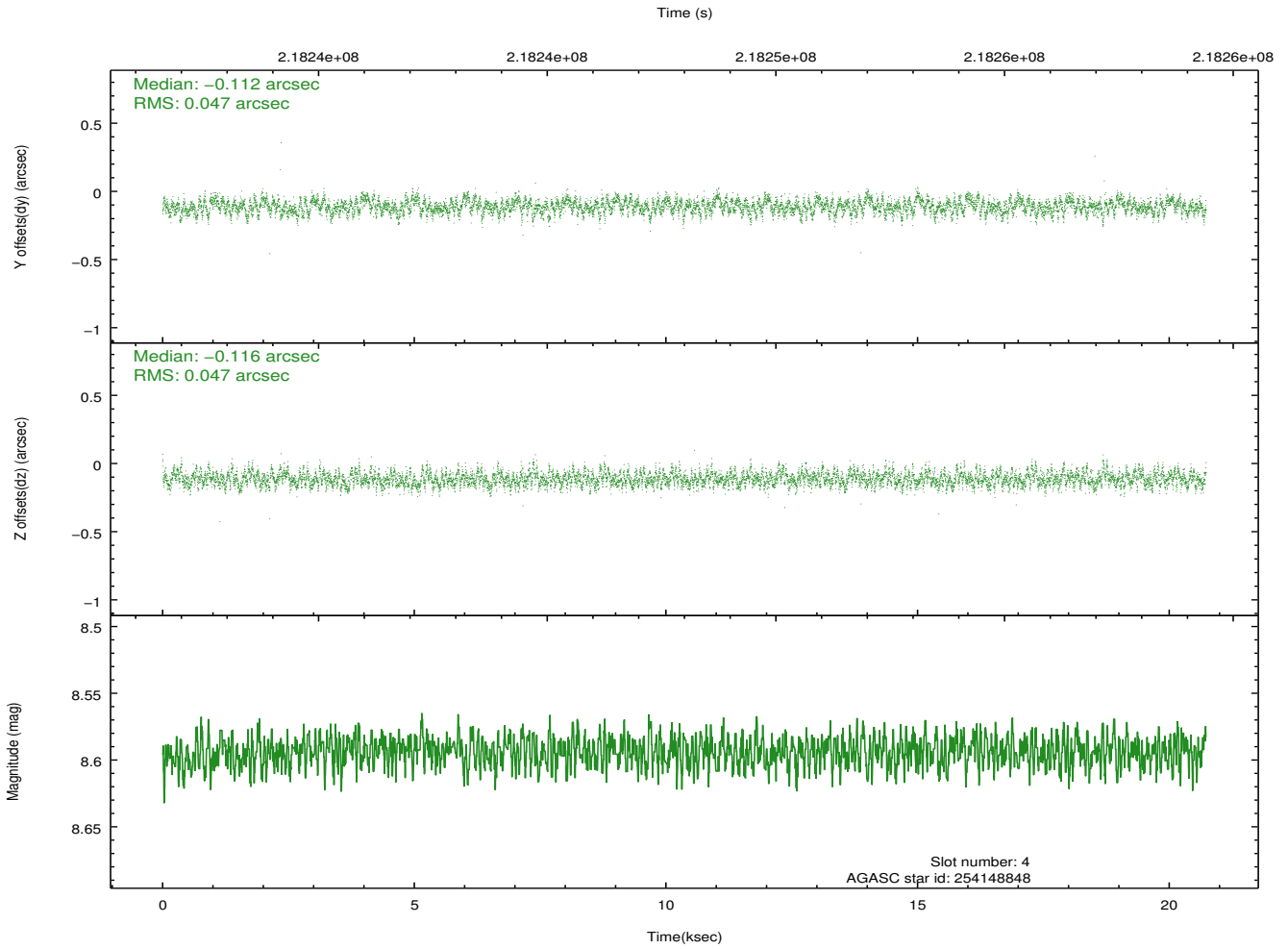
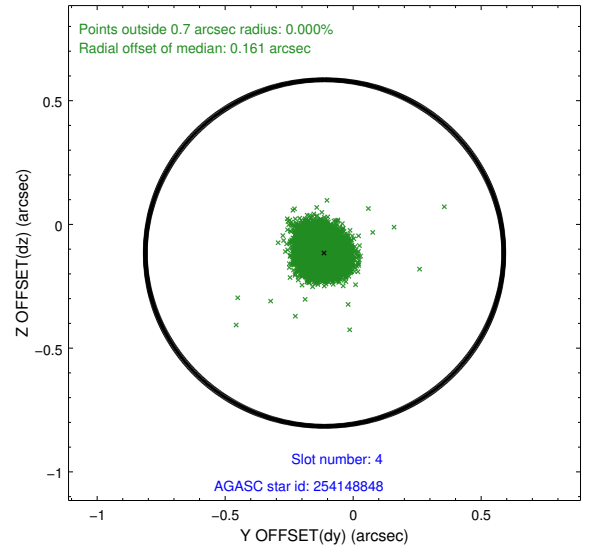
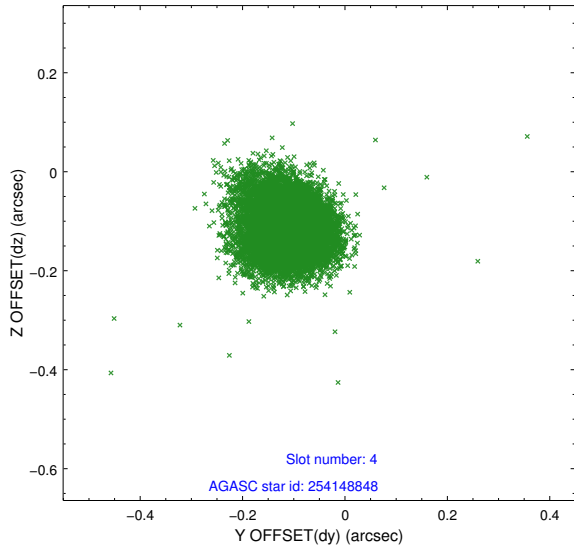
slot	status	id	mag	n_pts	med_dy	med_dz	dr1	dr2	ra	dec	mean_y	mean_z
0	FID	ACIS-I-1	7.23	5055	0.104	-0.104	0.006	0.010	0.000000	0.000000	933.23	-992.85
1	FID	ACIS-I-5	7.22	5055	-0.235	0.088	0.006	0.010	0.000000	0.000000	-1815.11	904.72
2	FID	ACIS-I-6	7.25	5057	0.040	0.087	0.006	0.011	0.000000	0.000000	398.53	1549.42
3	GUIDE	253635560	9.43	10107	0.216	-0.007	0.096	0.157	121.891540	27.828640	-1602.79	1600.02
4	GUIDE	254148848	8.59	10111	-0.112	-0.116	0.071	0.114	121.812561	28.591838	1108.02	2110.99
5	GUIDE	254149176	8.45	10113	0.029	-0.060	0.059	0.094	122.392823	28.196326	-130.17	143.60
6	GUIDE	254149440	9.34	10108	-0.022	-0.036	0.093	0.149	122.072793	28.597278	1206.55	1294.07
7	GUIDE	254157960	8.76	10105	-0.112	0.216	0.082	0.136	123.082877	28.757444	2102.84	-1820.95

## 2.4 Star Slots

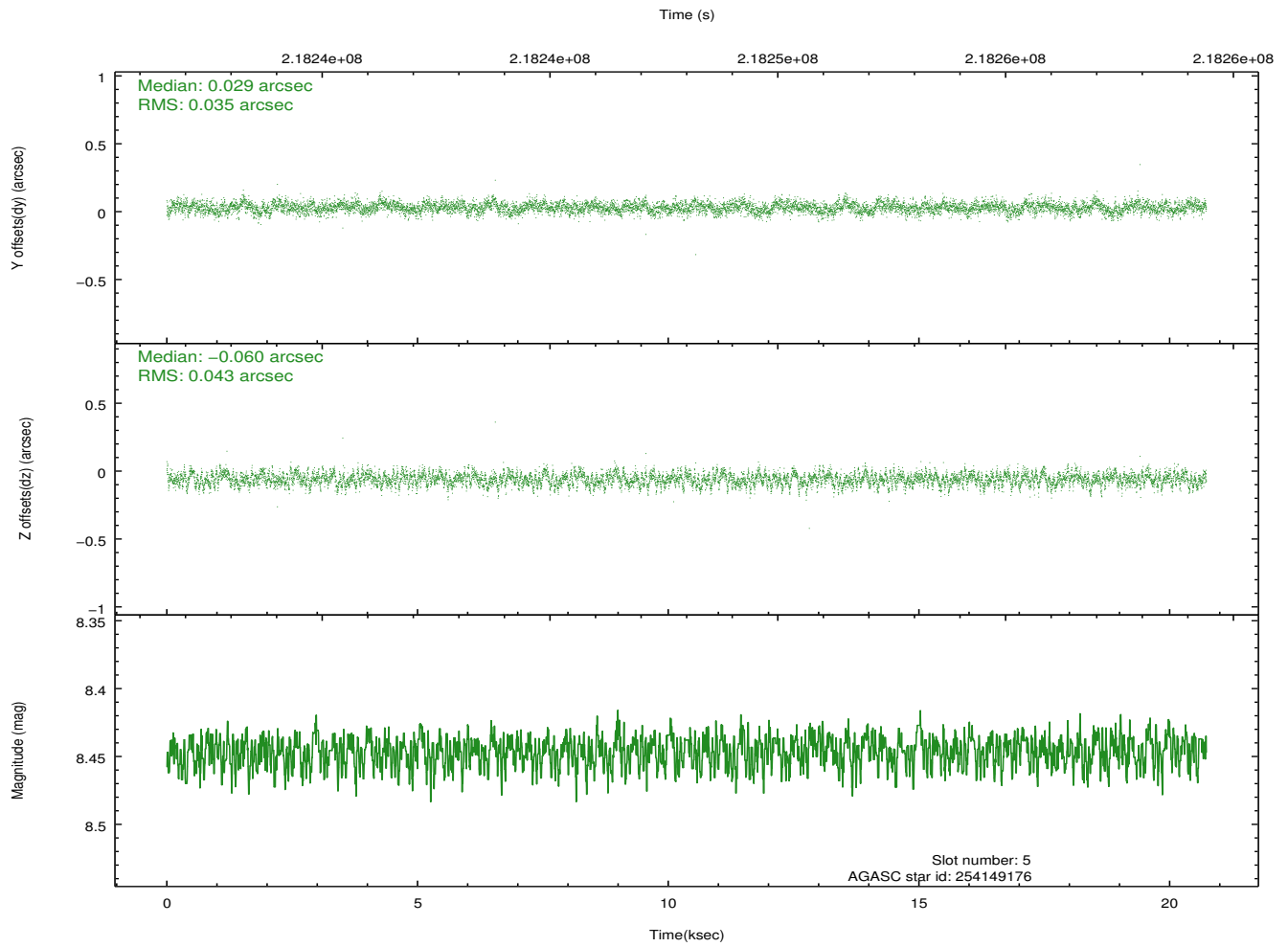
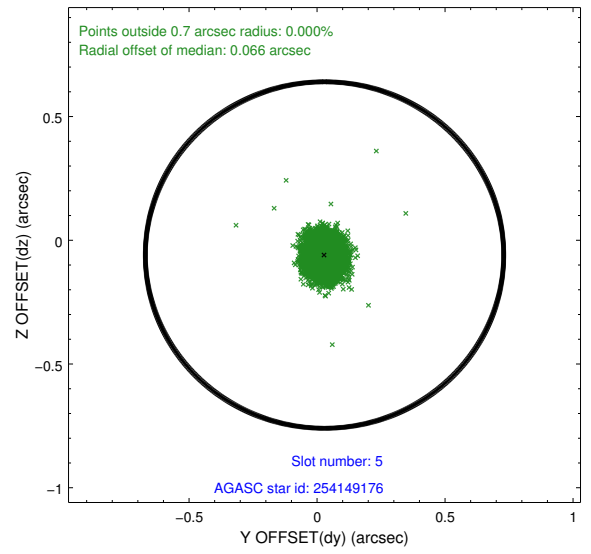
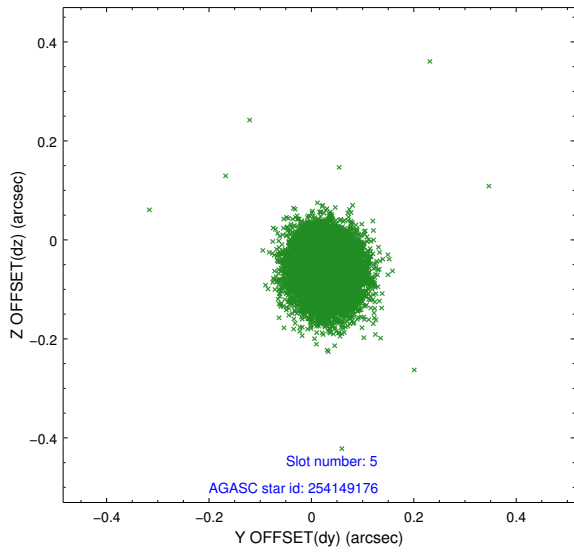
### 2.4.1 Slot 3



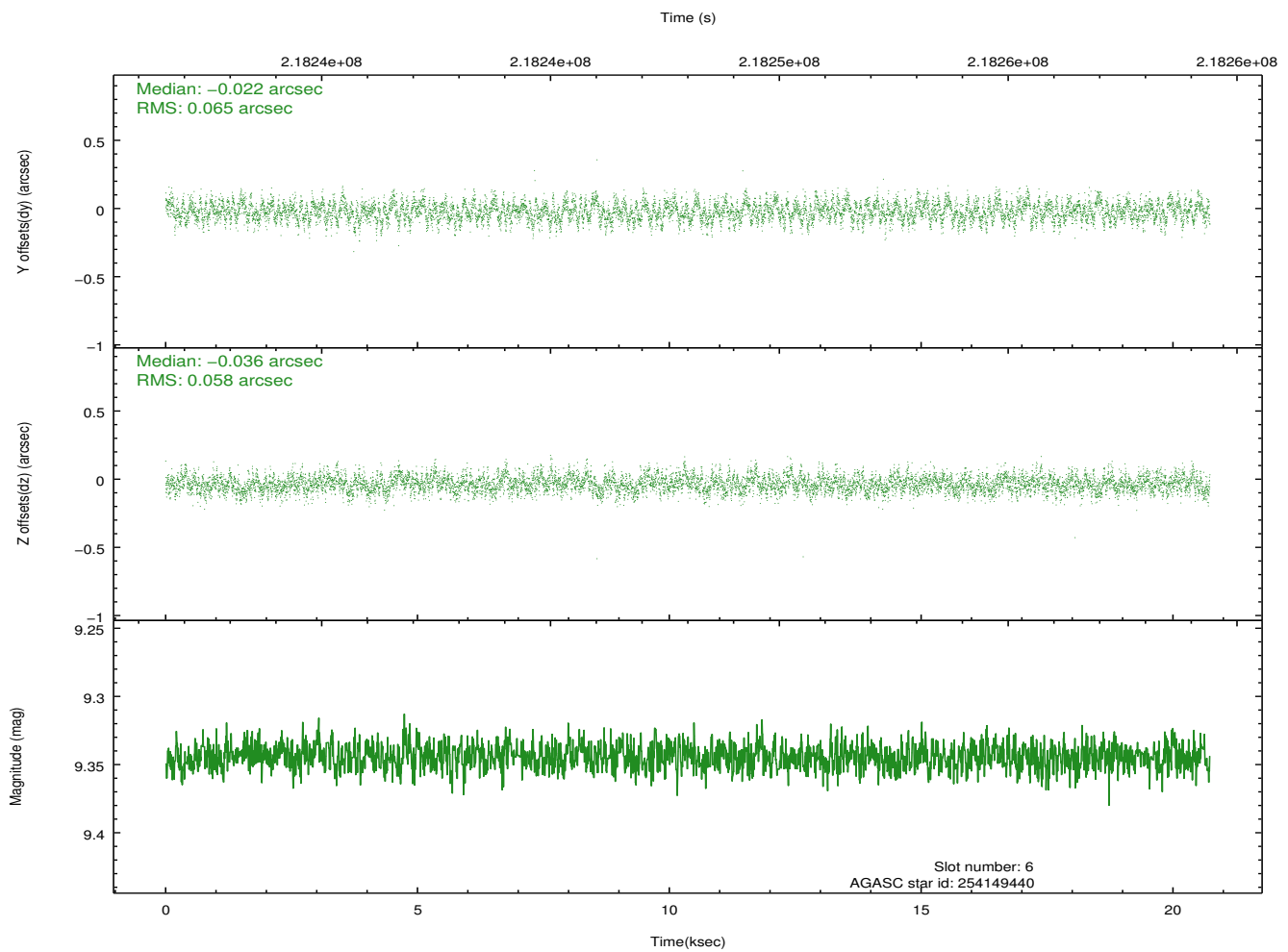
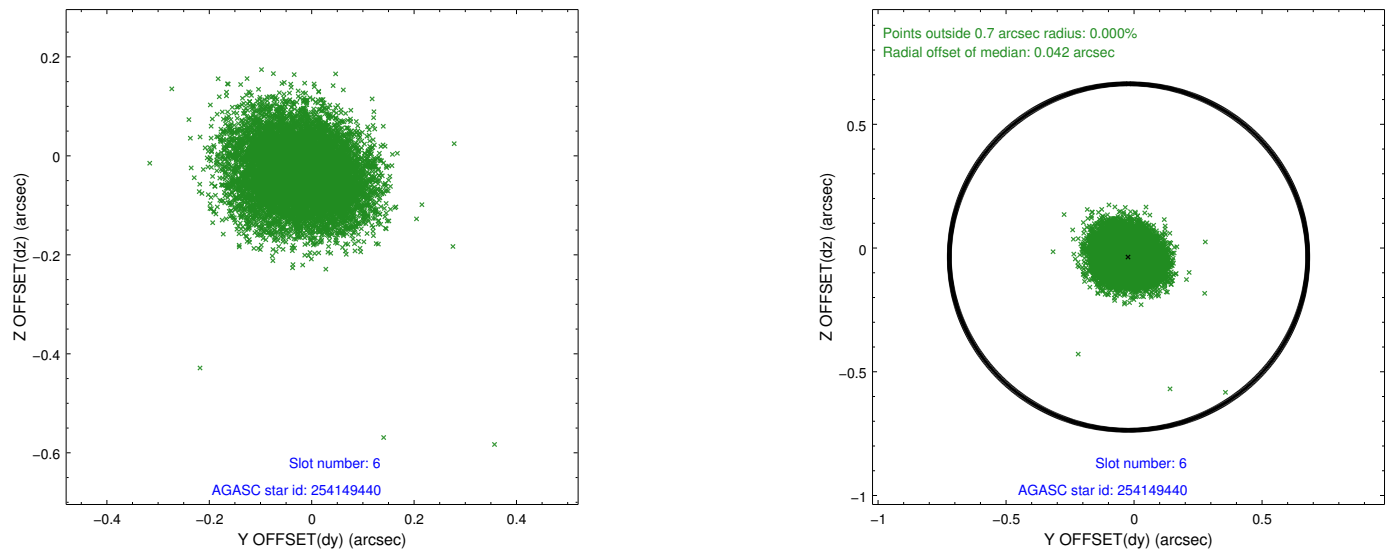
## 2.4.2 Slot 4



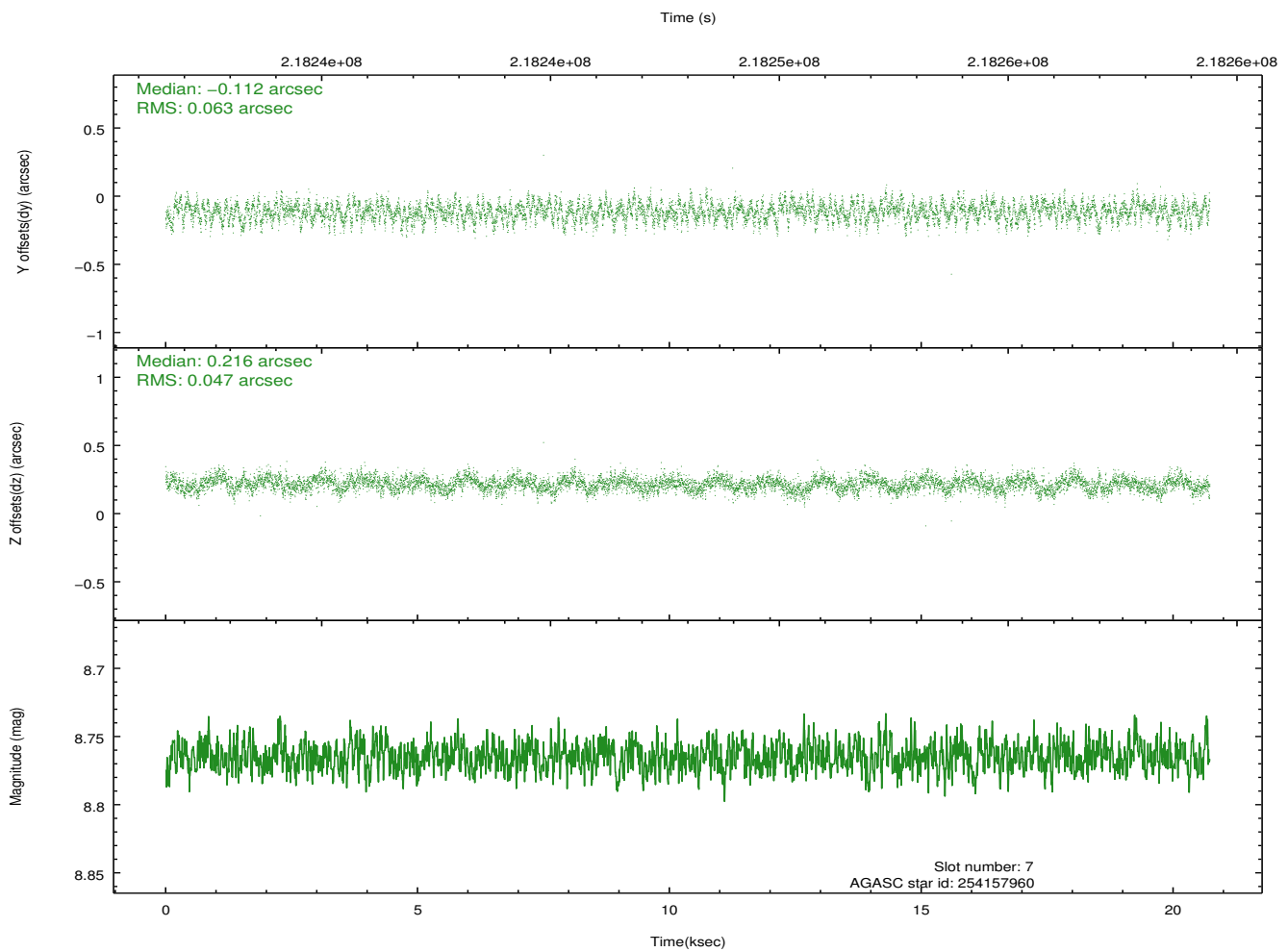
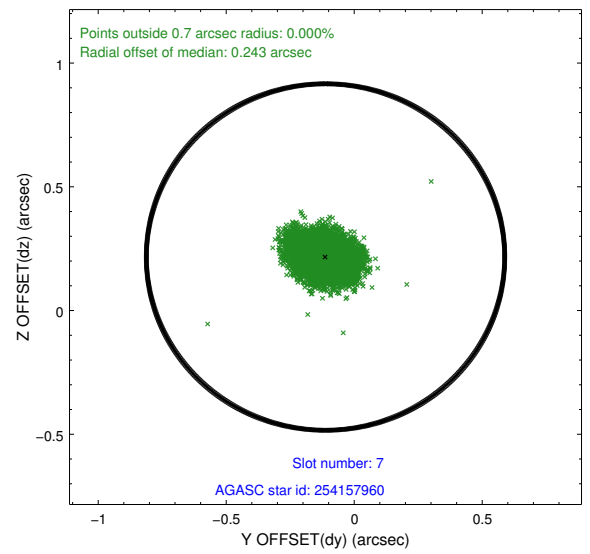
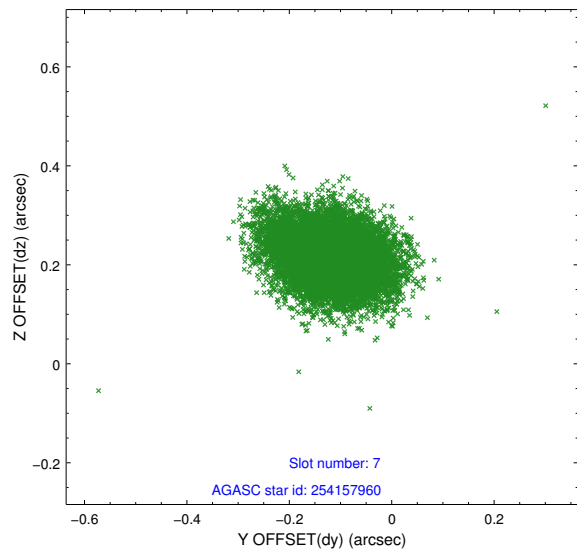
### 2.4.3 Slot 5



## 2.4.4 Slot 6

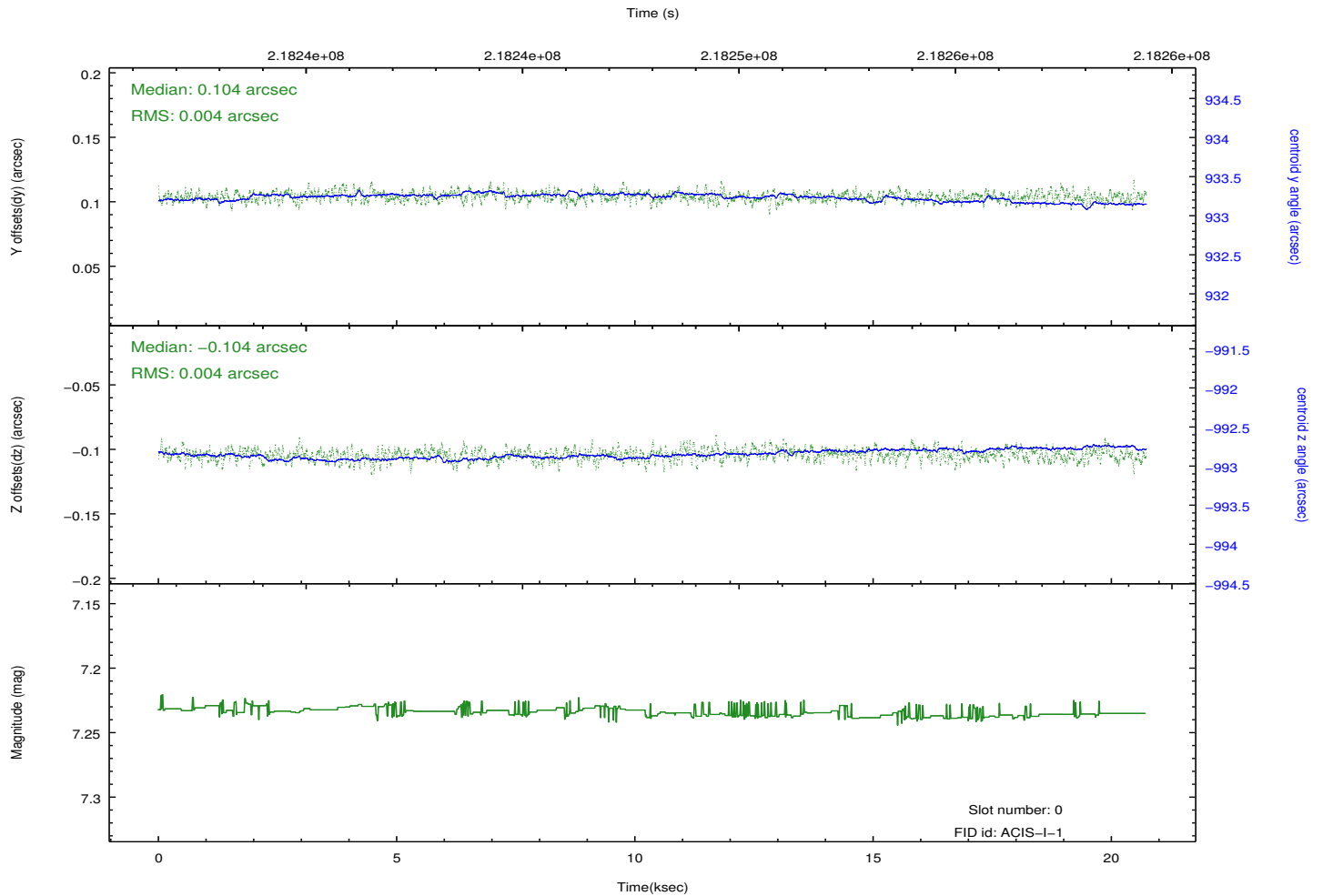
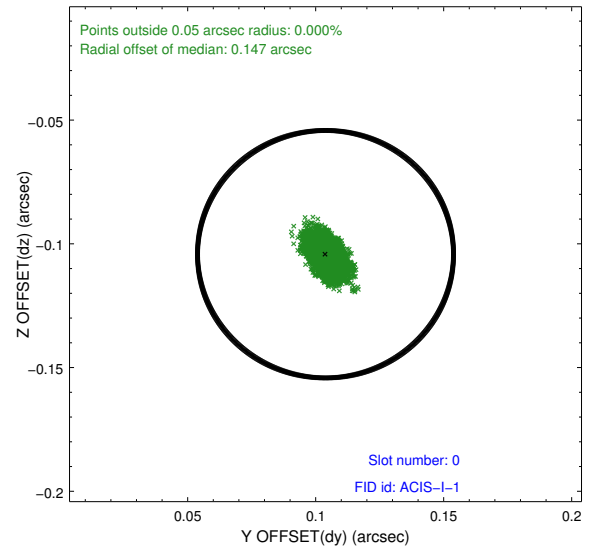
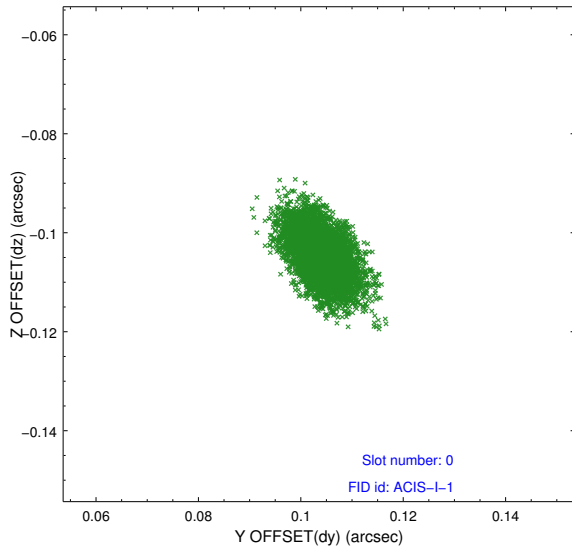


## 2.4.5 Slot 7

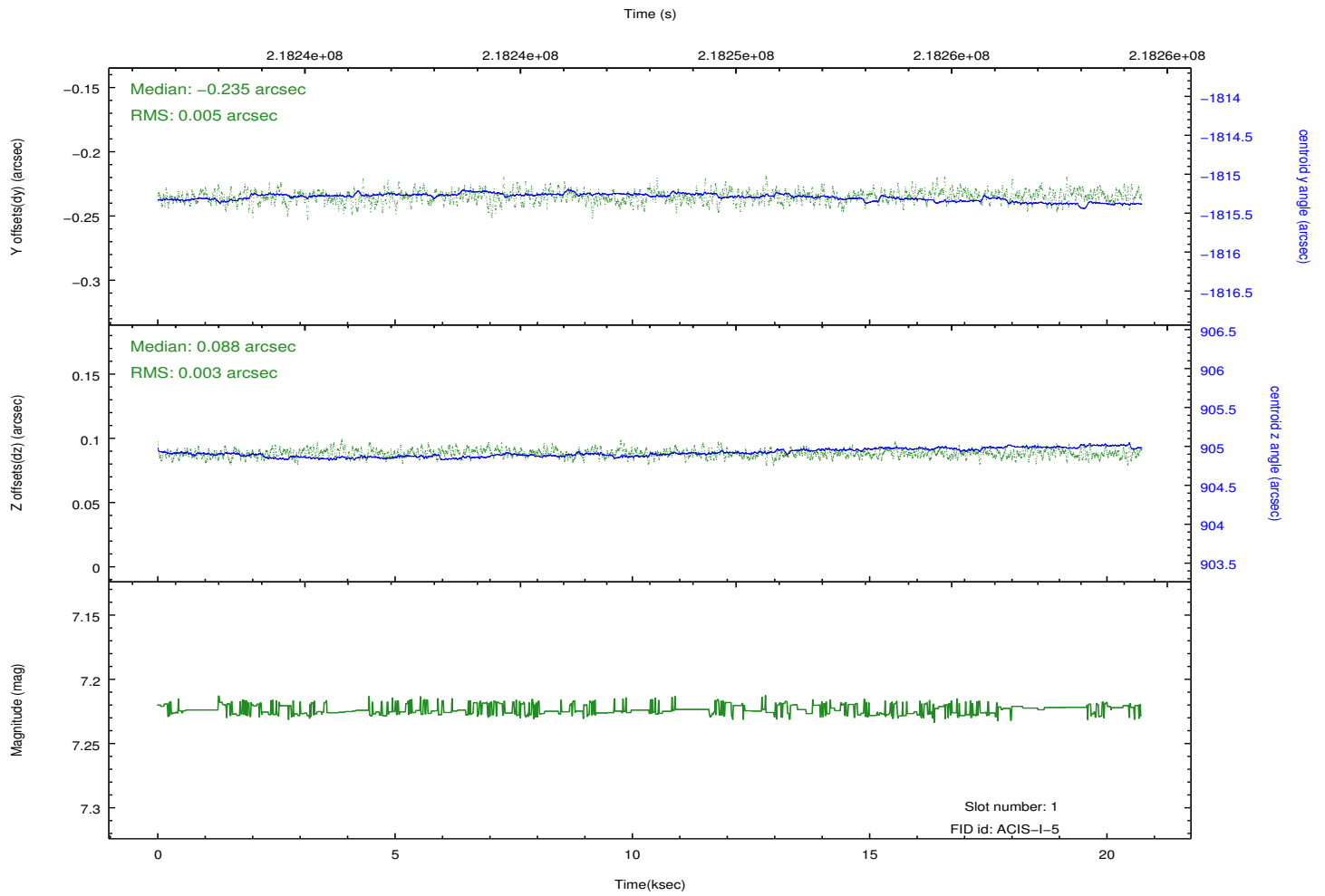
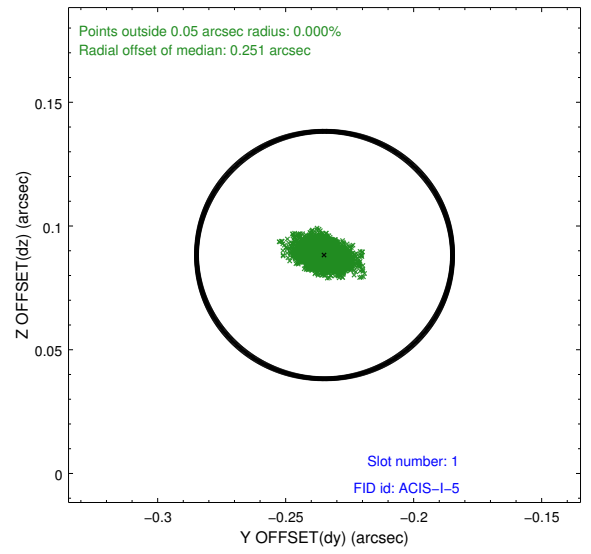
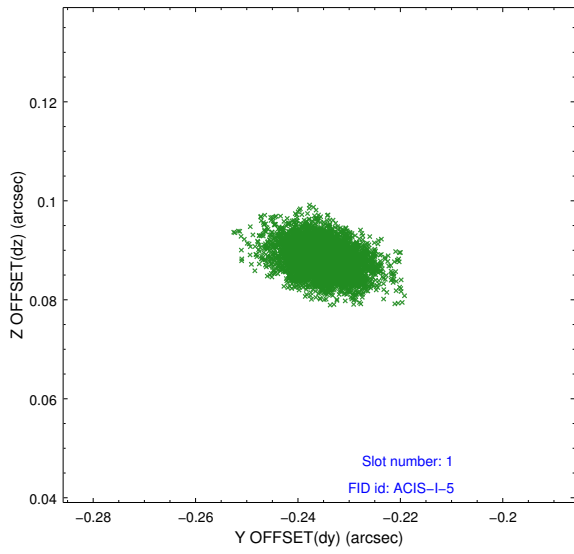


## 2.5 FID Slots

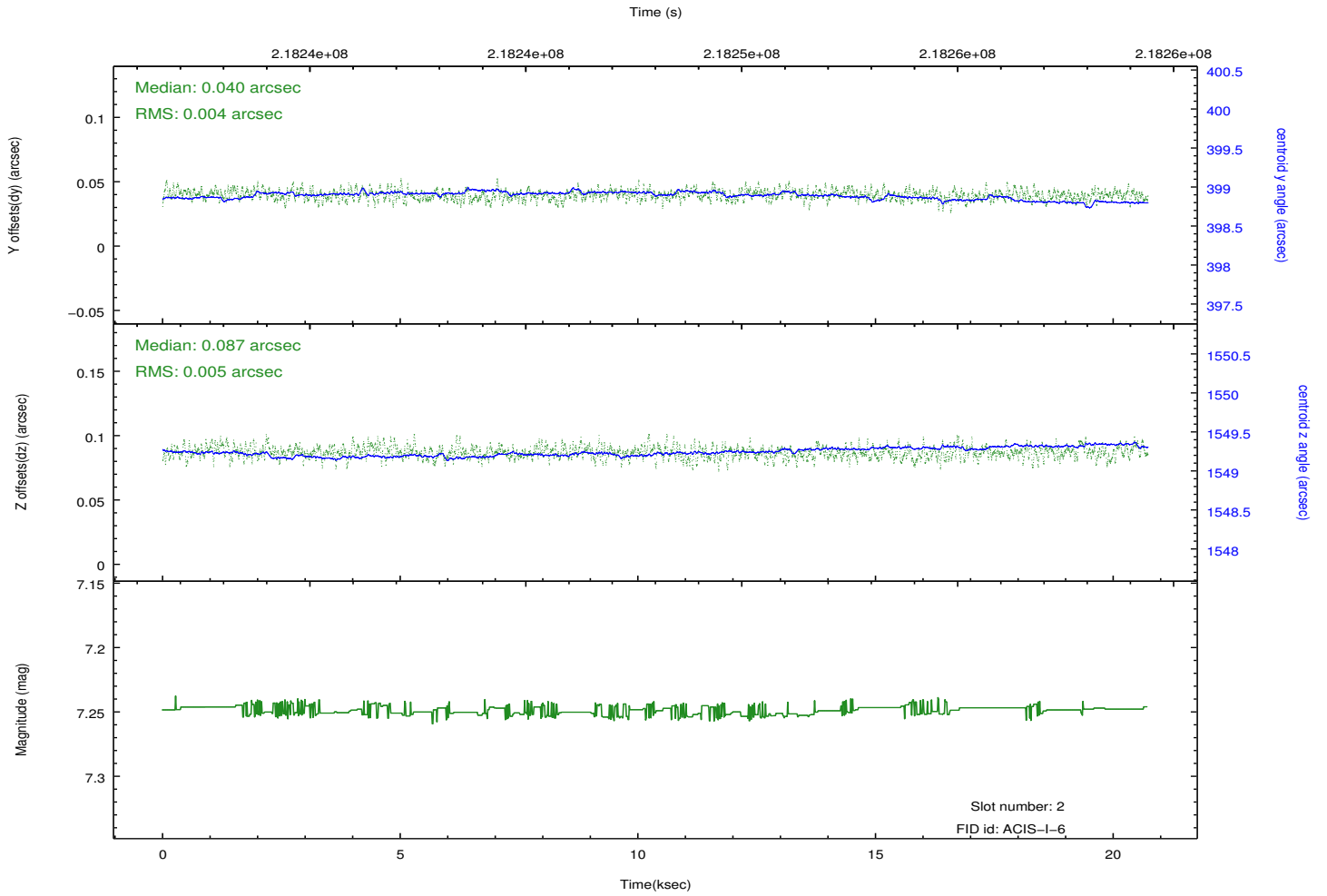
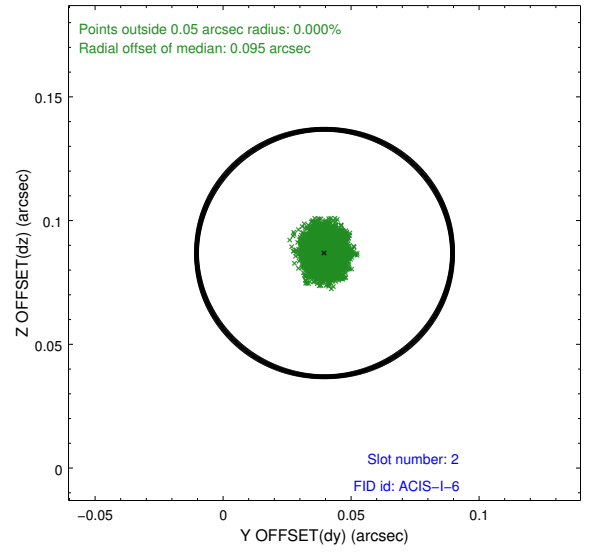
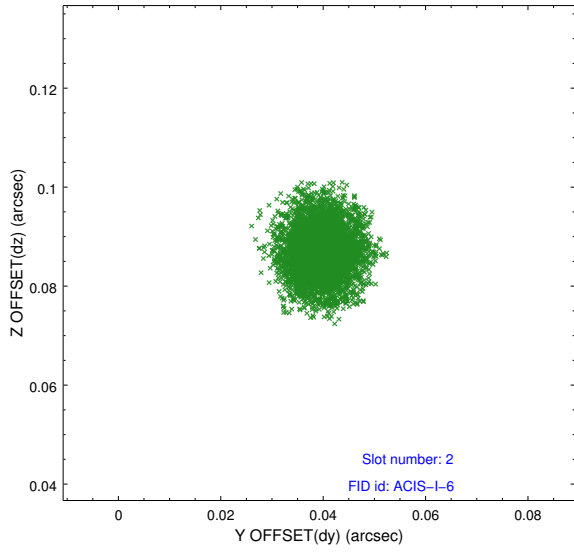
### 2.5.1 Slot 0



## 2.5.2 Slot 1



### 2.5.3 Slot 2



# A Summary

## A.1 Status

V&V Scientist	Jen Lauer
V&V Date (YYYY-MM-DD)	2013.01.04
V&V Edition	1
V&V Disposition and Status	OK
V&V Charge Time	19.94225

## A.2 Comments