

V&V Reference Report

L2 ASCDS Version : 8.5.1.1

Observation 5824 - L2 Version 3
Chandra X-Ray Center

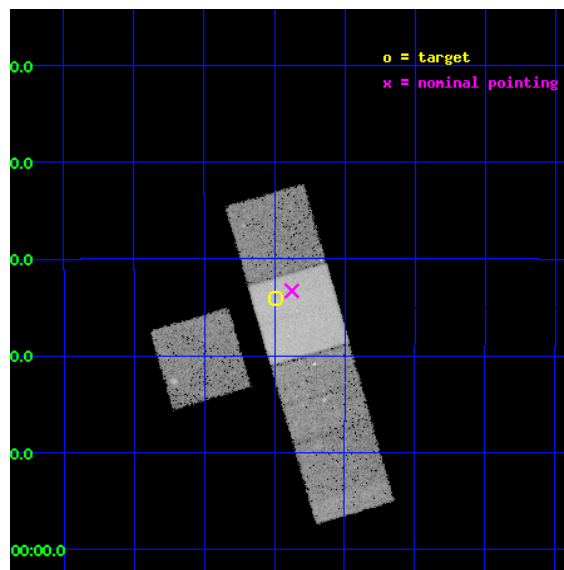
L2 Processing Date : Dec 20 2012

Contents

1	Front	2
2	OBI	3
2.1	OBI	3
2.1.1	Images	3
2.1.2	Bias	3
2.1.3	Parameters	4
2.1.4	Events	4
2.2	Compared Parameters	5
2.3	Aspect	6
2.4	Star Slots	9
2.4.1	Slot 3	9
2.4.2	Slot 4	10
2.4.3	Slot 5	11
2.4.4	Slot 6	12
2.4.5	Slot 7	13
2.5	FID Slots	14
2.5.1	Slot 0	14
2.5.2	Slot 1	15
2.5.3	Slot 2	16
A	Summary	17
A.1	Status	17
A.2	Comments	17

1 Front

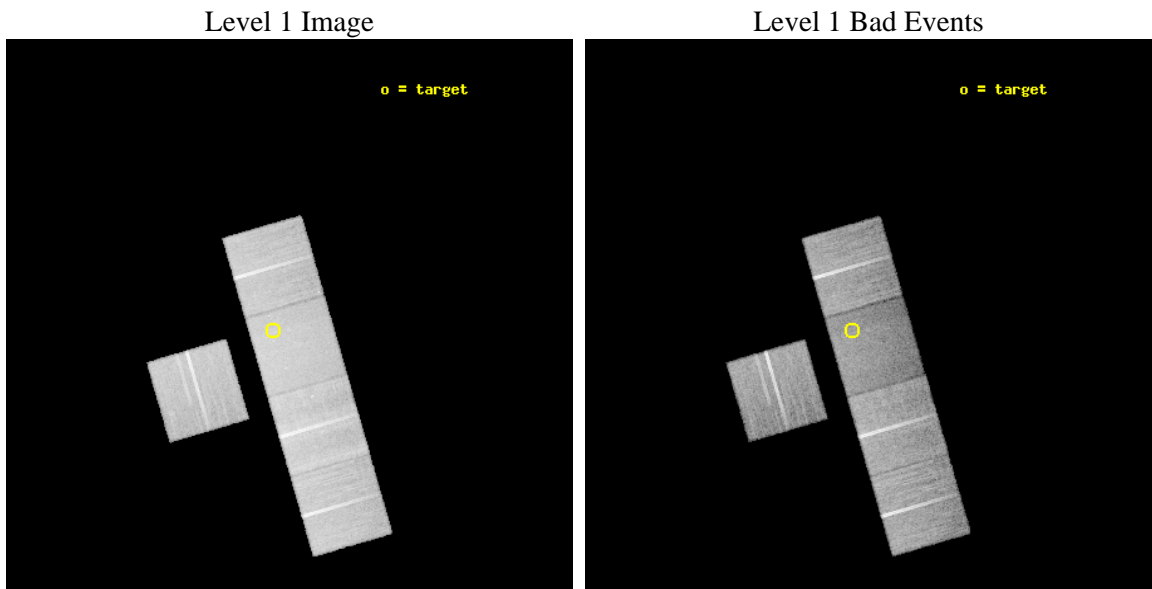
seq_num	800536	Sequence number
obs_id	5824	Observation id
title	First X-ray Observation of Two High Redshift Lensing Clusters from the Optically Selected LCDCS Sample	Proposal title
observer	Professor Gordon Garmire	Principal investigator
object	LCDCS 954	Source name
dtcycle	0	
cycle	P	events from which exps? Prim/Second/Both
ra_targ	215.12375	Observer's specified target RA [deg]
dec_targ	-11.567778	Observer's specified target Dec [deg]
ra_nom	215.09389705239	Nominal RA [deg]
dec_nom	-11.555021798991	Nominal Dec [deg]
roll_nom	73.818528764392	Nominal Roll [deg]
revision	3	Processing version of data
ontime	29034.558953881	Sum of GTIs [s]
livetime	28655.201066217	Livetime [s]
ontime3	29037.699944139	Sum of GTIs [s]
ontime6	29034.558933944	Sum of GTIs [s]
ontime7	29034.558953881	Sum of GTIs [s]
ontime8	29034.558934003	Sum of GTIs [s]
ontime9	29031.417943716	Sum of GTIs [s]
l2events	159480	Number of level 2 events



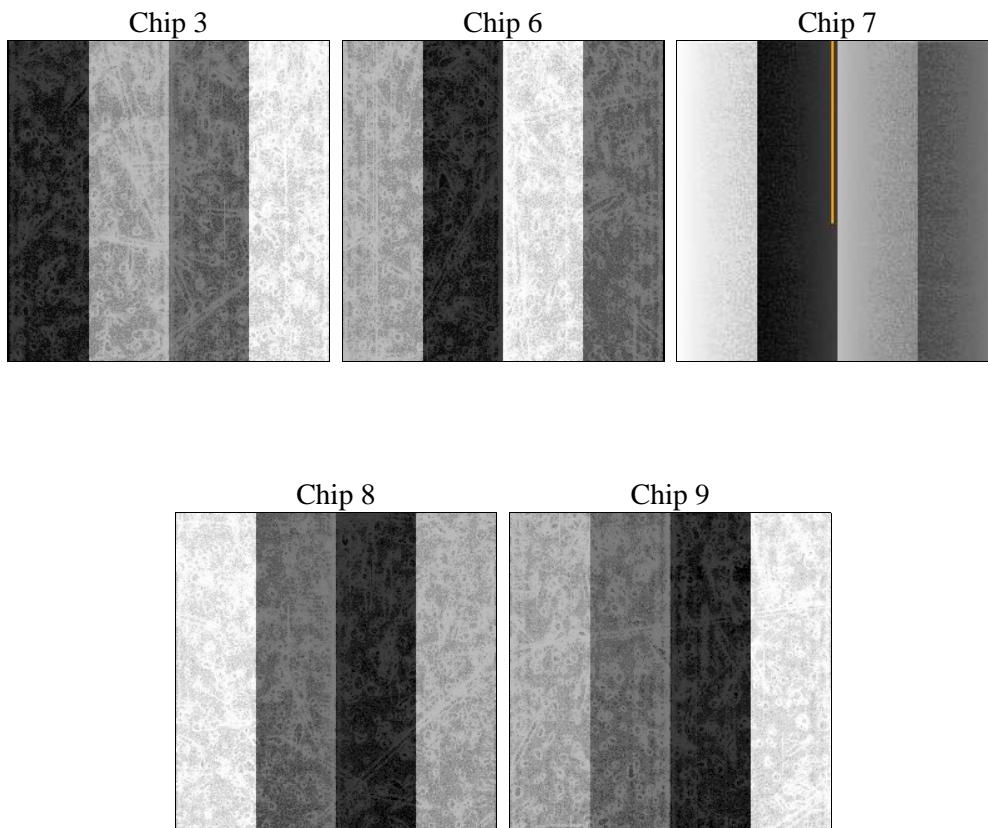
2 OBI

2.1 OBI

2.1.1 Images



2.1.2 Bias



2.1.3 Parameters

obi_num	0	Obi number	sched_exp_time	29000.000000	[s] Scheduled observation exposure time
ascdsver	8.5.1.1	Processing system revision	ontime	29034.558953881	Sum of GTIs [s]
caldbver	4.5.5	 	ontime3	29037.699944139	Sum of GTIs [s]
date	2012-12-20T16:19:00	Date and time of file creation	ontime6	29034.558933944	Sum of GTIs [s]
revision	3	Processing version of data	ontime7	29034.558953881	Sum of GTIs [s]
			ontime8	29034.558934003	Sum of GTIs [s]
			ontime9	29031.417943716	Sum of GTIs [s]
			l1events	979313	Number of level 1 events

2.1.4 Events

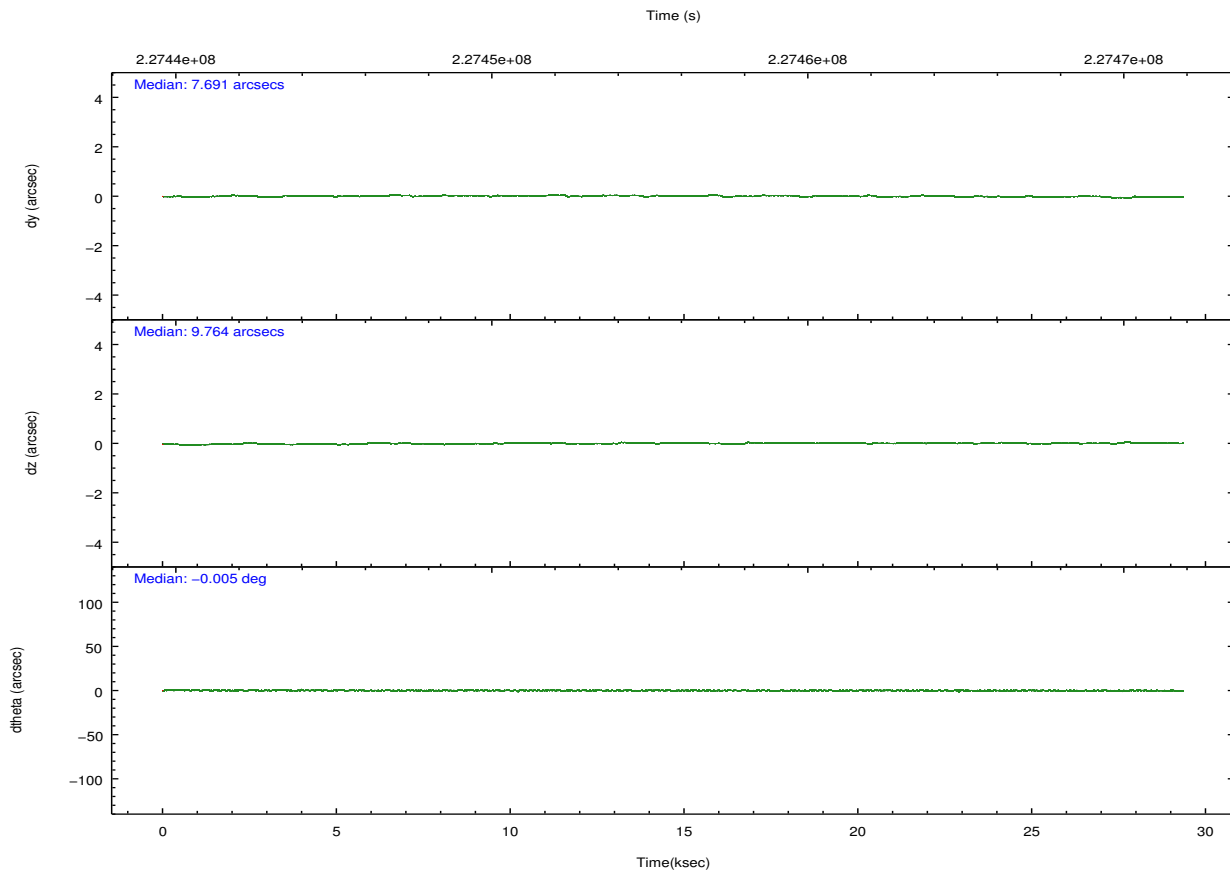
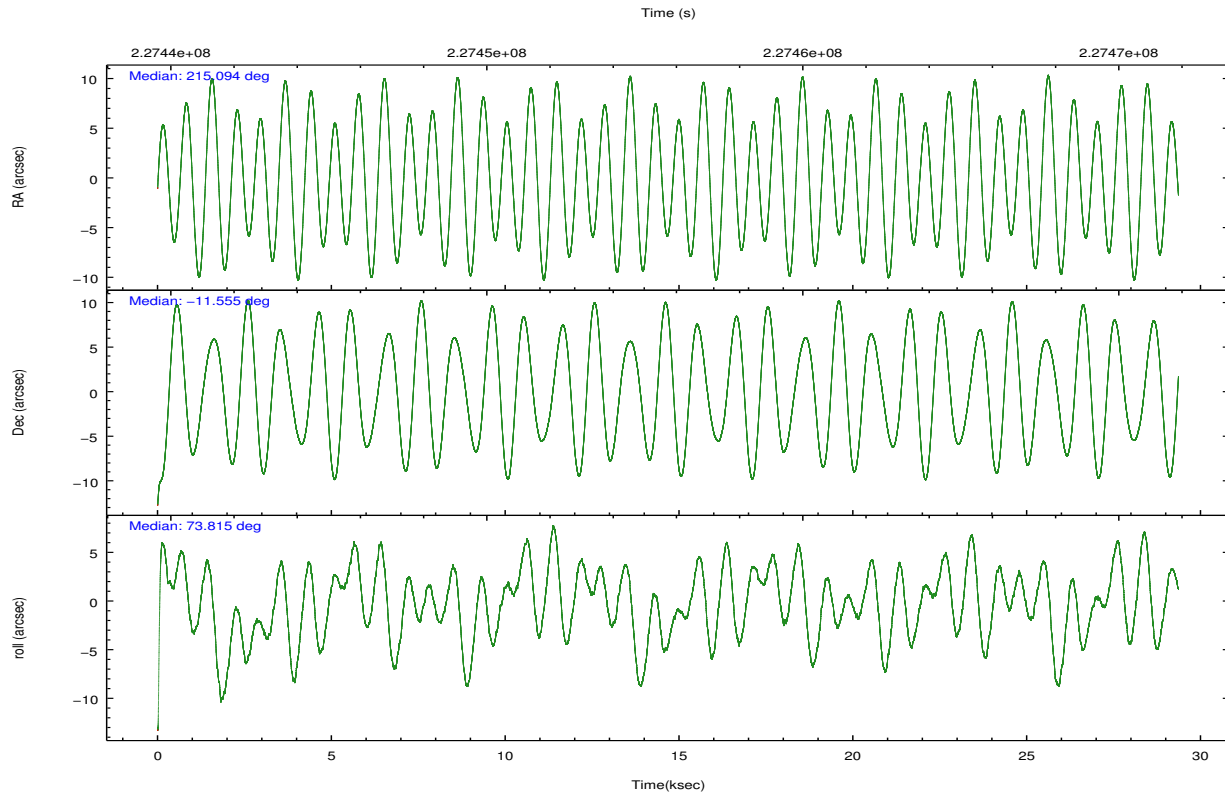
	ccd 3	ccd 6	ccd 7	ccd 8	ccd 9
level 1 events	177711	183355	203467	229174	185606
rejected events	160818	164662	111549	175097	165342
rejected %	90%	89%	54%	76%	89%

	ccd 3	ccd 6	ccd 7	ccd 8	ccd 9
grade 0 events	6013	6634	8589	17014	7543
	3%	3%	4%	7%	4%
grade 1 events	91	88	199	154	101
	0%	0%	0%	0%	0%
grade 2 events	3609	4044	18542	11844	4208
	2%	2%	9%	5%	2%
grade 3 events	1943	2092	8825	5918	2288
	1%	1%	4%	2%	1%
grade 4 events	1928	1944	8690	5482	2179
	1%	1%	4%	2%	1%
grade 5 events	7196	7277	21659	10505	7947
	4%	3%	10%	4%	4%
grade 6 events	3403	3979	47282	13828	4052
	1%	2%	23%	6%	2%
grade 7 events	153528	157297	89681	164429	157288
	86%	85%	44%	71%	84%

2.2 Compared Parameters

Parameter	Planned	Actual	Parameter	Planned	Actual
Instrument	ACIS	ACIS	Obspar format version number	7	7
Detector	ACIS-36789	ACIS-36789	Obspar file type	PREDICTED	ACTUAL
Grating	NONE	NONE	Obspar update status	NONE	UPDATED
Data mode	VFAINT	VFAINT	Number of optional ACIS chips dropped	0	0
Observation mode	POINTING	POINTING	On-chip summing requested	N	N
[deg] Pointing RA	215.100897	215.0938970523872	Subarray requested	NONE	NONE
[deg] Pointing Dec	-11.581360	-11.55502179899123	Alternating exposures requested	N	N
[deg] Pointing Roll	73.663315	73.81852876439227	[s] Primary exposure time	0.000000	3.1
[mm] SIM focus pos	-0.684267	-0.6828225247311905			
[mm] SIM defocus	0	0.001444936568705701			
[mm] SIM translation stage pos	-190.132523	-190.1425803651734			
[mm] SIM translation stage offset	0	0.01005778216563158			
[s] Observation start time (MET)	227441423.184000	227440408.66908			
Observation start date	2005-03-17T10:09:19	2005-03-17T09:53:28			
[s] Observation end time (MET)	227470423.184000	227470814.27045			
Observation end date	2005-03-17T18:12:39	2005-03-17T18:20:14			
Read mode	TIMED	TIMED			

2.3 Aspect

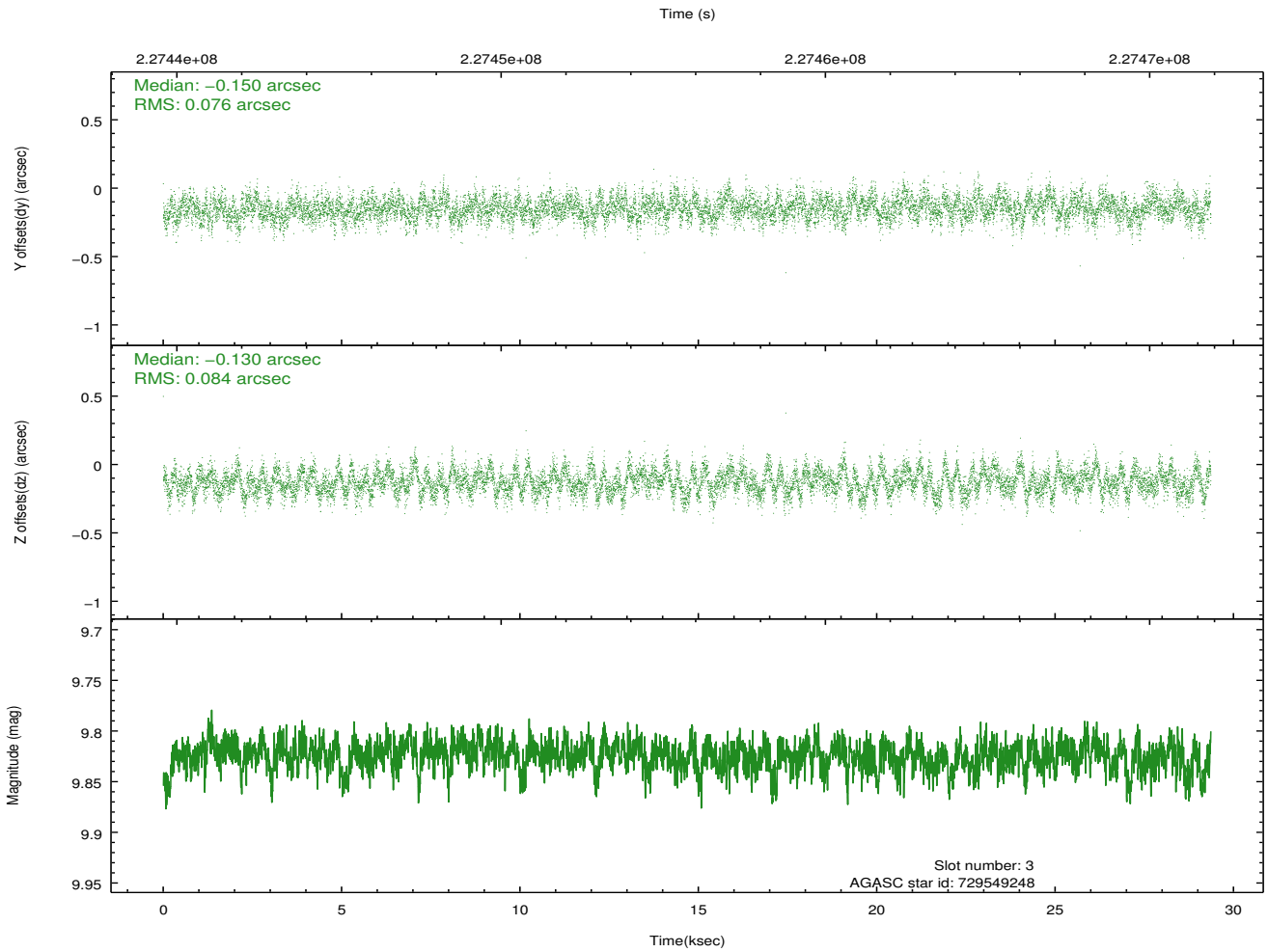
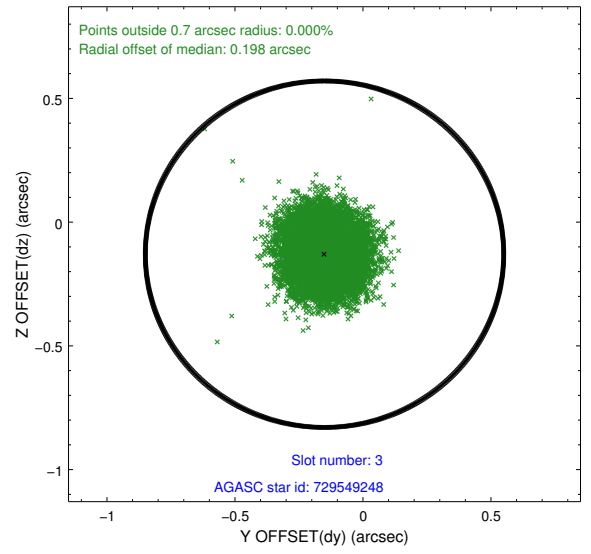
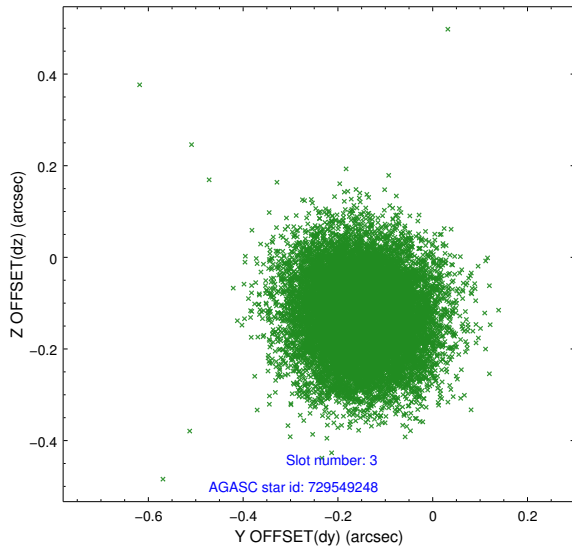


Slot Statistics

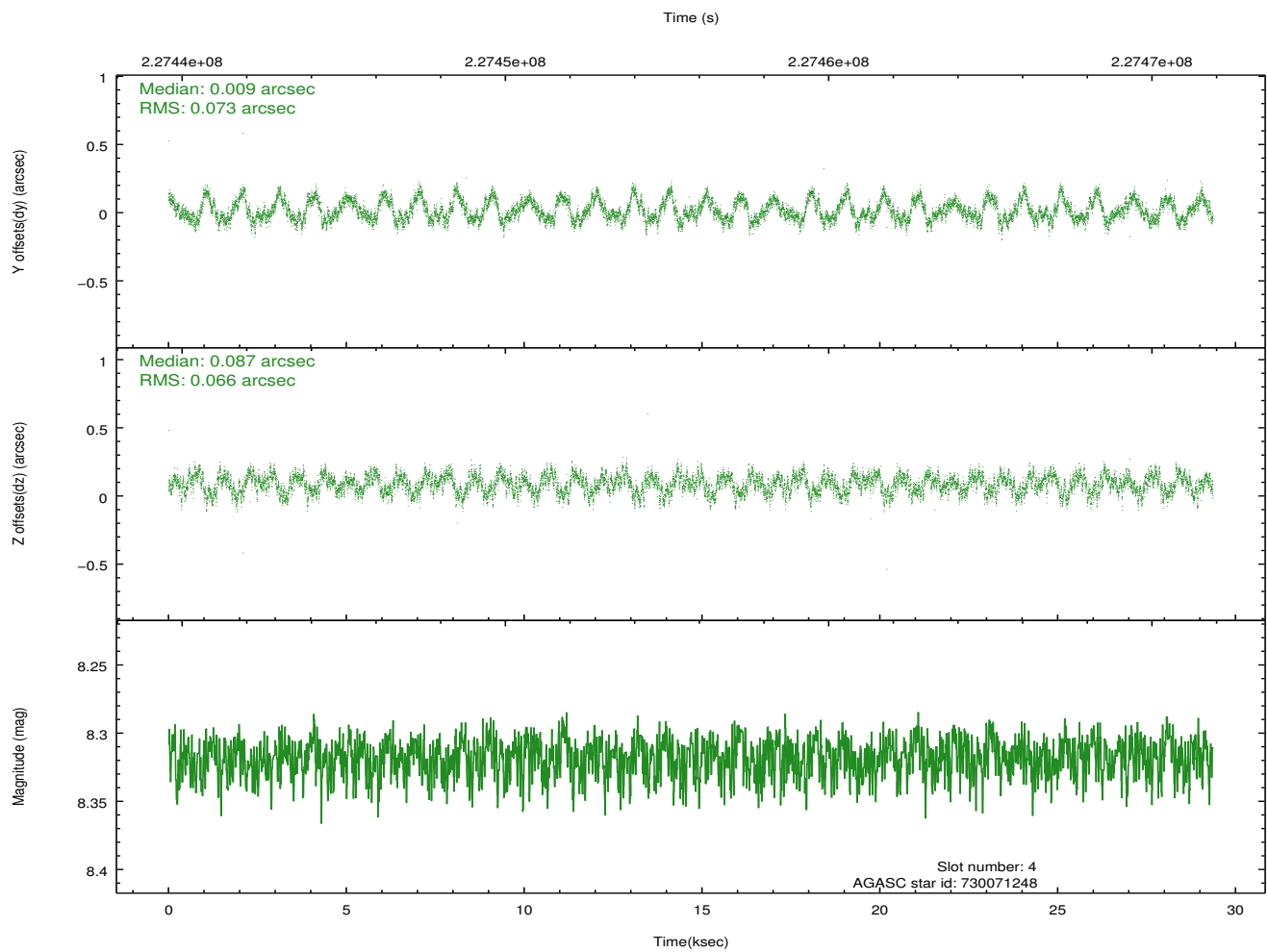
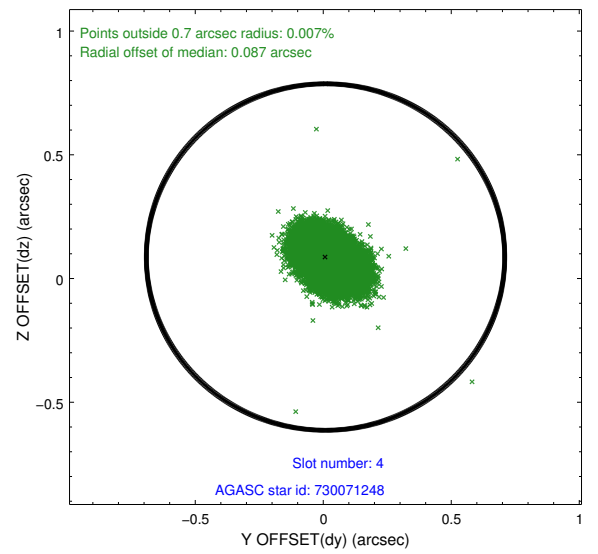
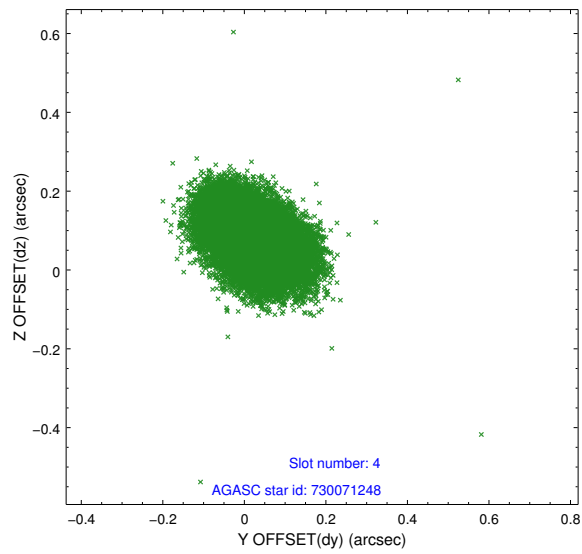
slot	status	id	mag	n_pts	med_dy	med_dz	dr1	dr2	ra	dec	mean_y	mean_z
0	FID	ACIS-S-2	7.11	7160	-0.039	-0.027	0.006	0.011	0.000000	0.000000	-760.46	-1730.99
1	FID	ACIS-S-4	7.21	7160	0.097	0.026	0.005	0.010	0.000000	0.000000	2152.88	177.53
2	FID	ACIS-S-5	7.24	7158	-0.089	0.010	0.006	0.011	0.000000	0.000000	-1813.29	171.18
3	GUIDE	729549248	9.82	14304	-0.150	-0.130	0.122	0.195	215.033935	-11.058423	1739.85	757.32
4	GUIDE	730071248	8.32	14320	0.009	0.087	0.107	0.162	215.554332	-11.808230	-335.01	-1763.30
5	GUIDE	730071272	9.33	14309	0.027	-0.150	0.131	0.203	214.693677	-11.804287	-1174.82	1150.51
6	GUIDE	730071552	8.14	14319	-0.045	0.051	0.072	0.116	215.297067	-11.841775	-705.16	-926.70
7	GUIDE	730071624	9.69	14306	0.154	0.147	0.104	0.176	215.217660	-11.714250	-342.84	-529.25

2.4 Star Slots

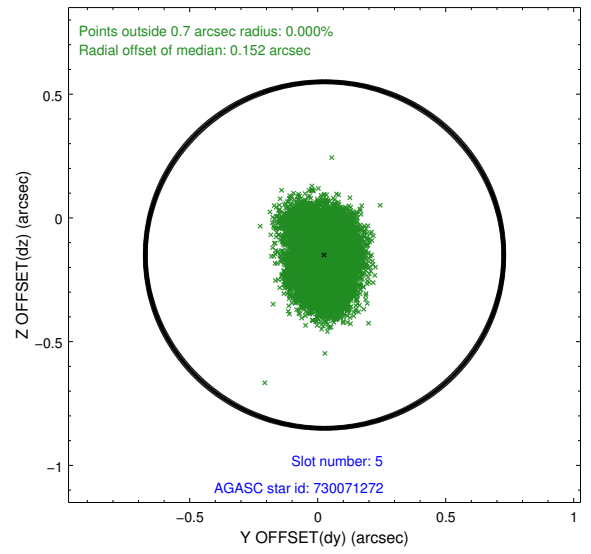
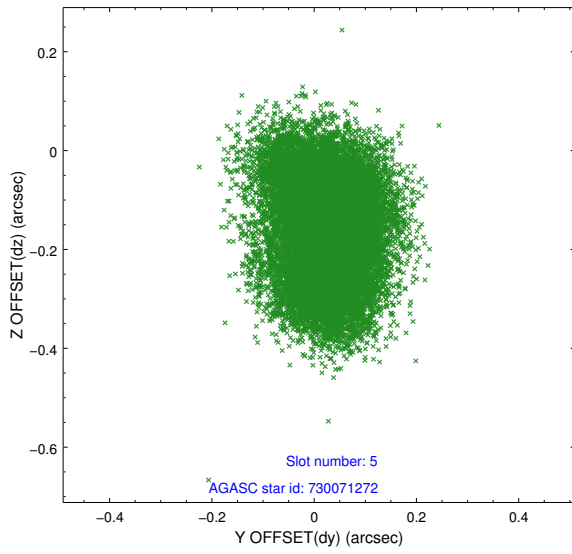
2.4.1 Slot 3



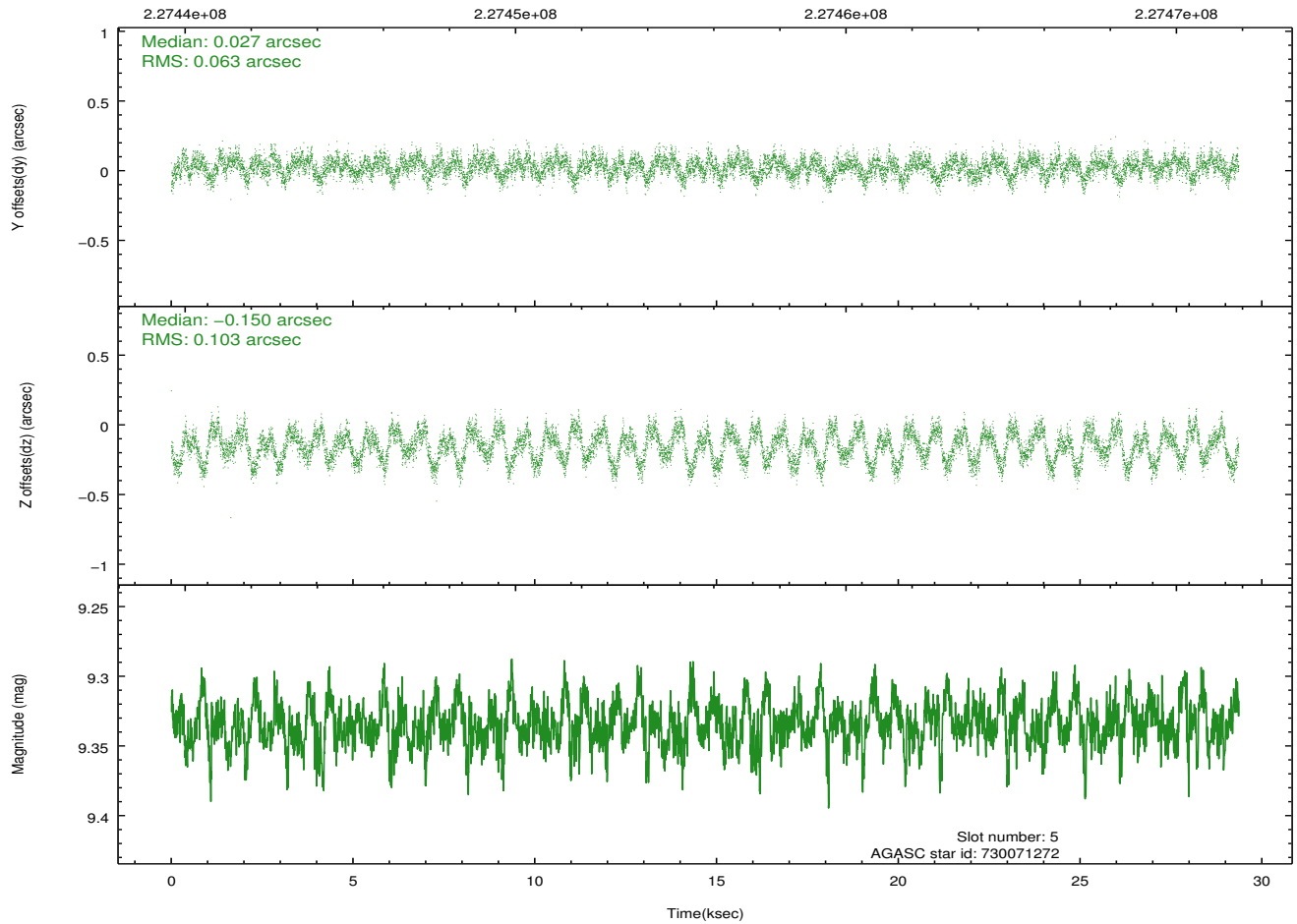
2.4.2 Slot 4



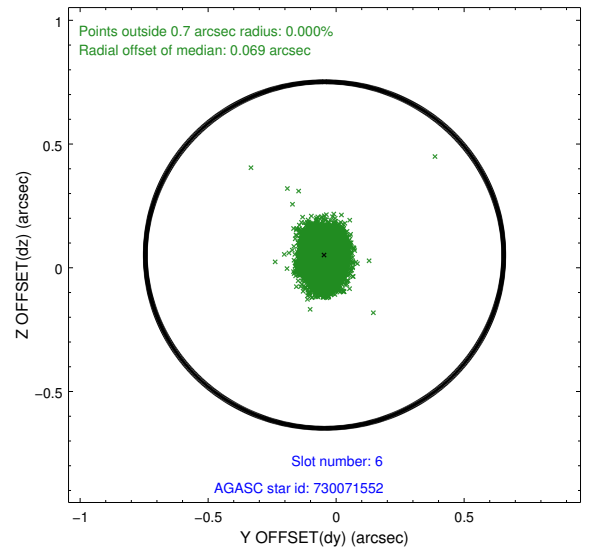
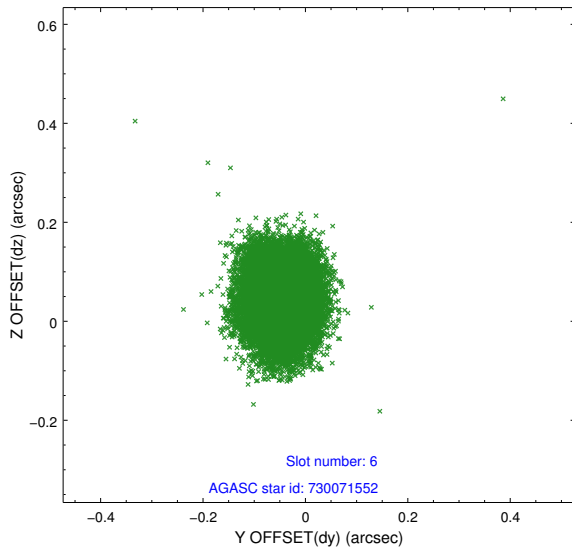
2.4.3 Slot 5



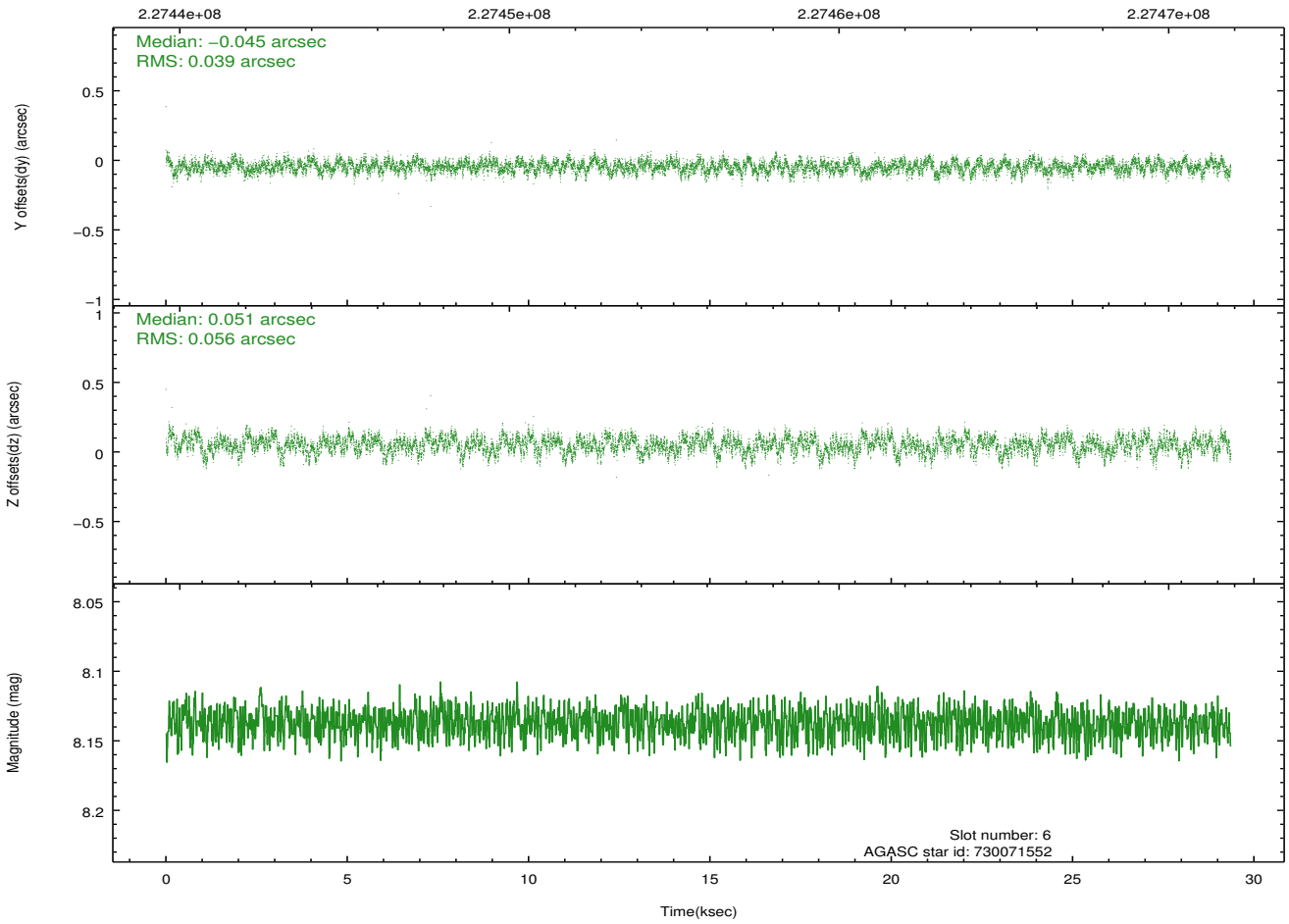
Time (s)



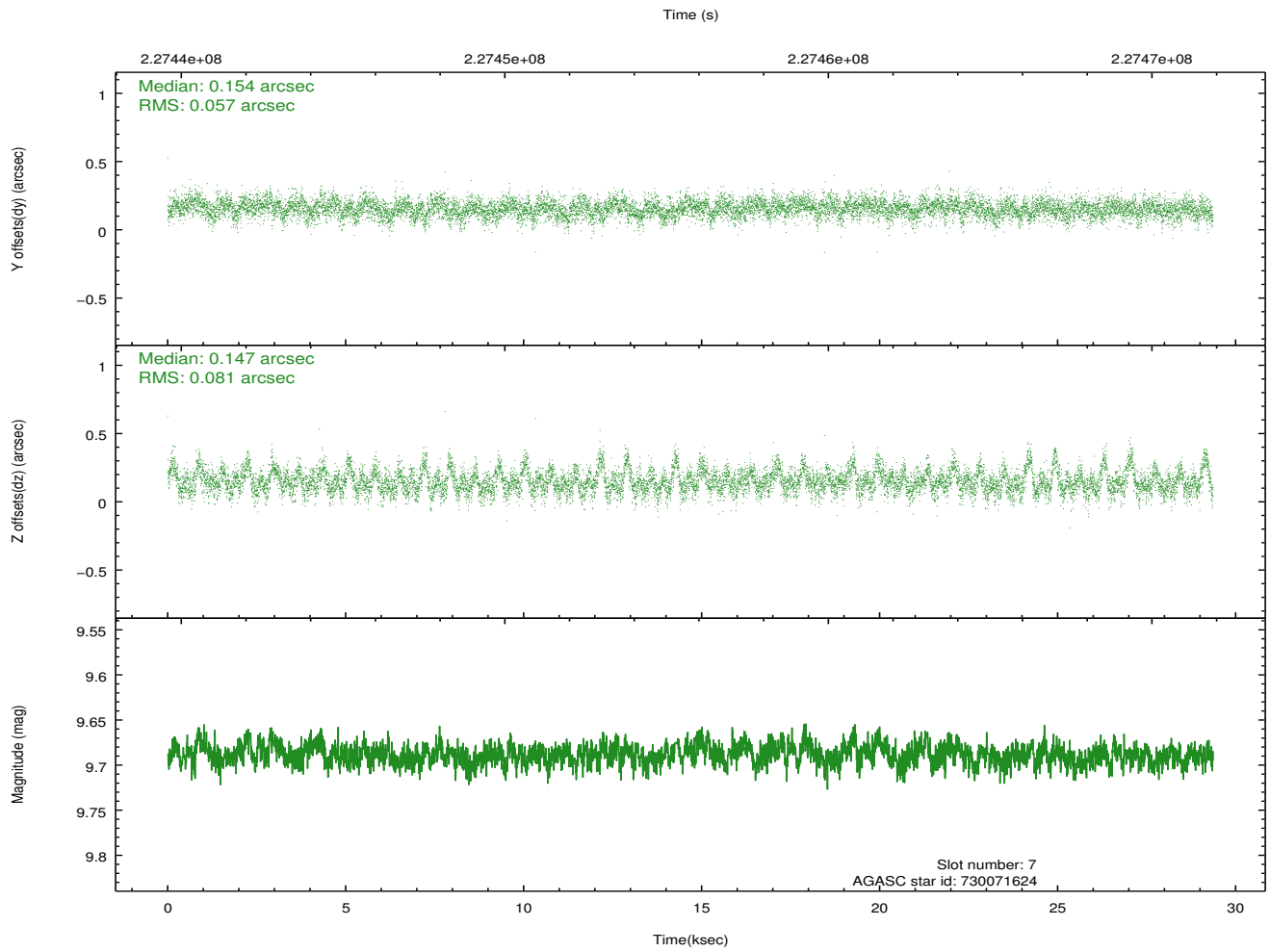
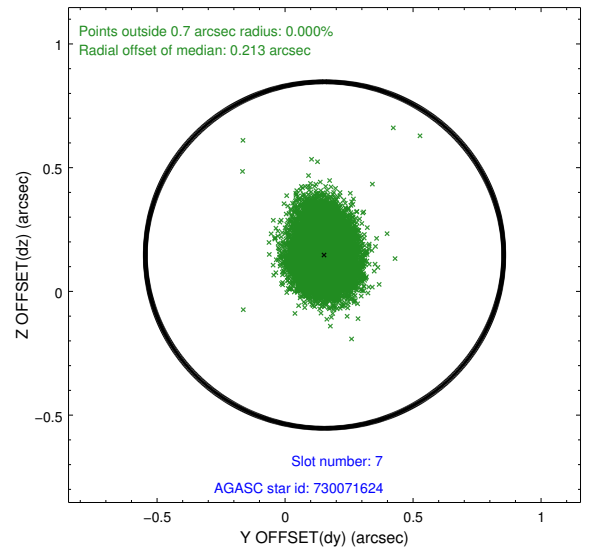
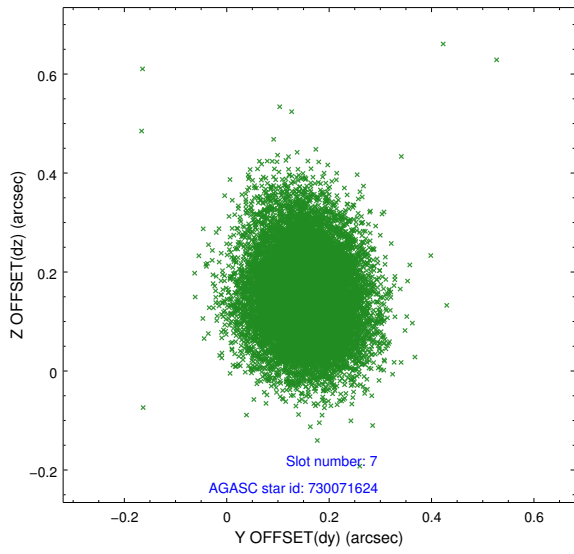
2.4.4 Slot 6



Time (s)

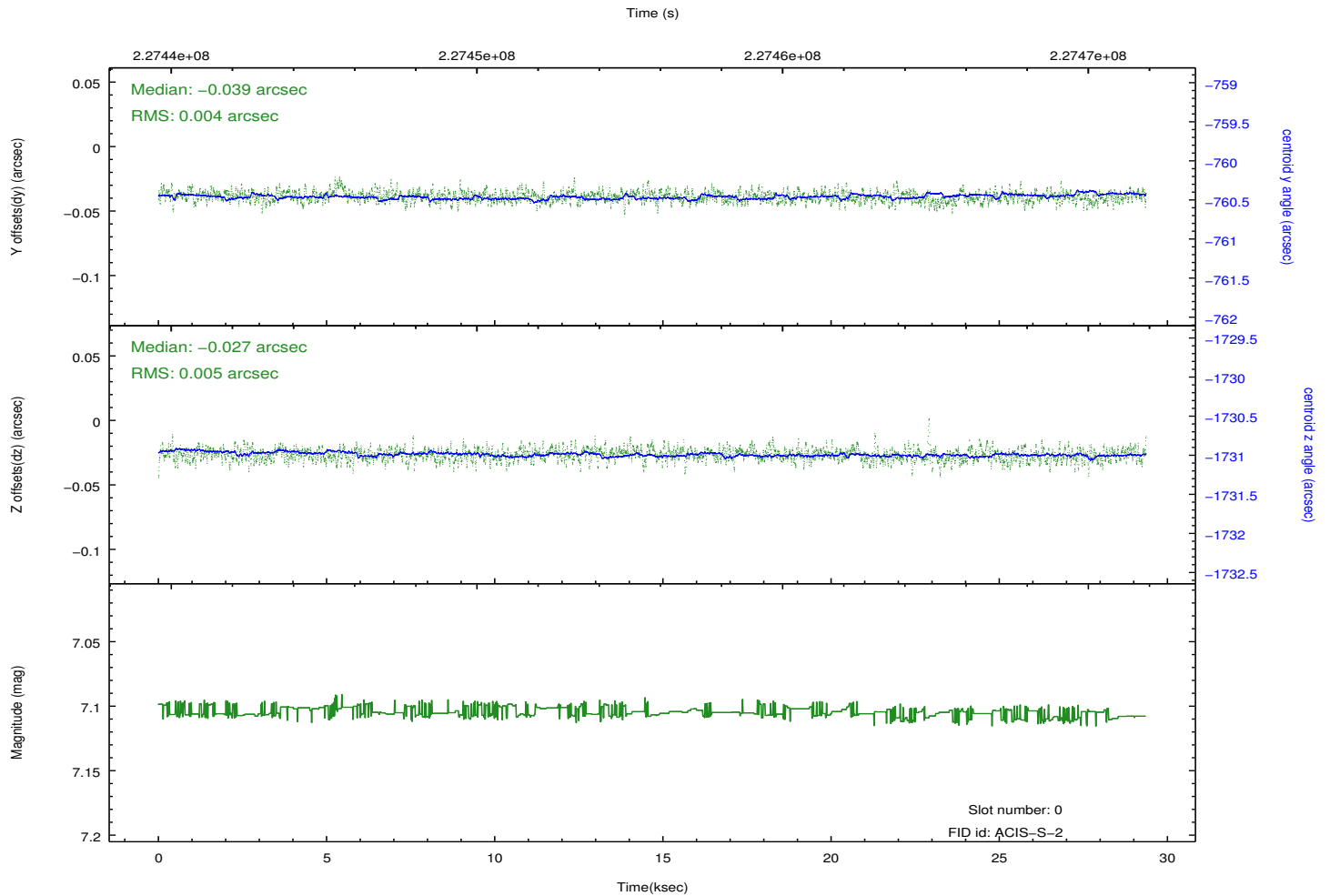
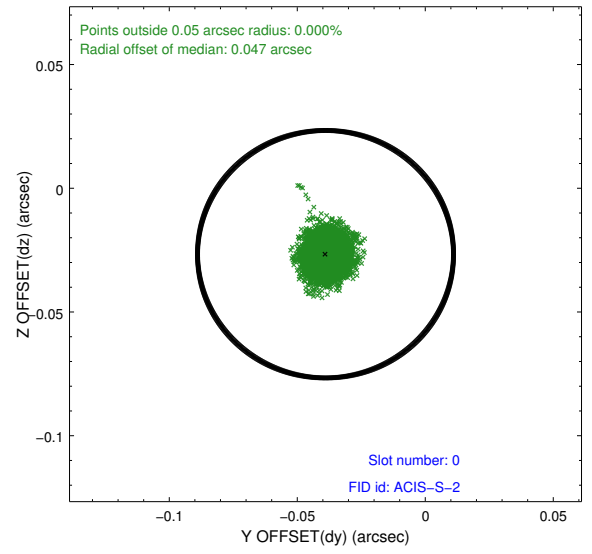
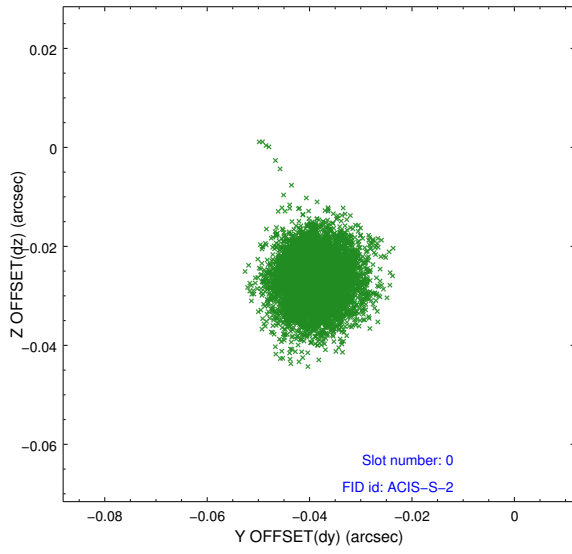


2.4.5 Slot 7

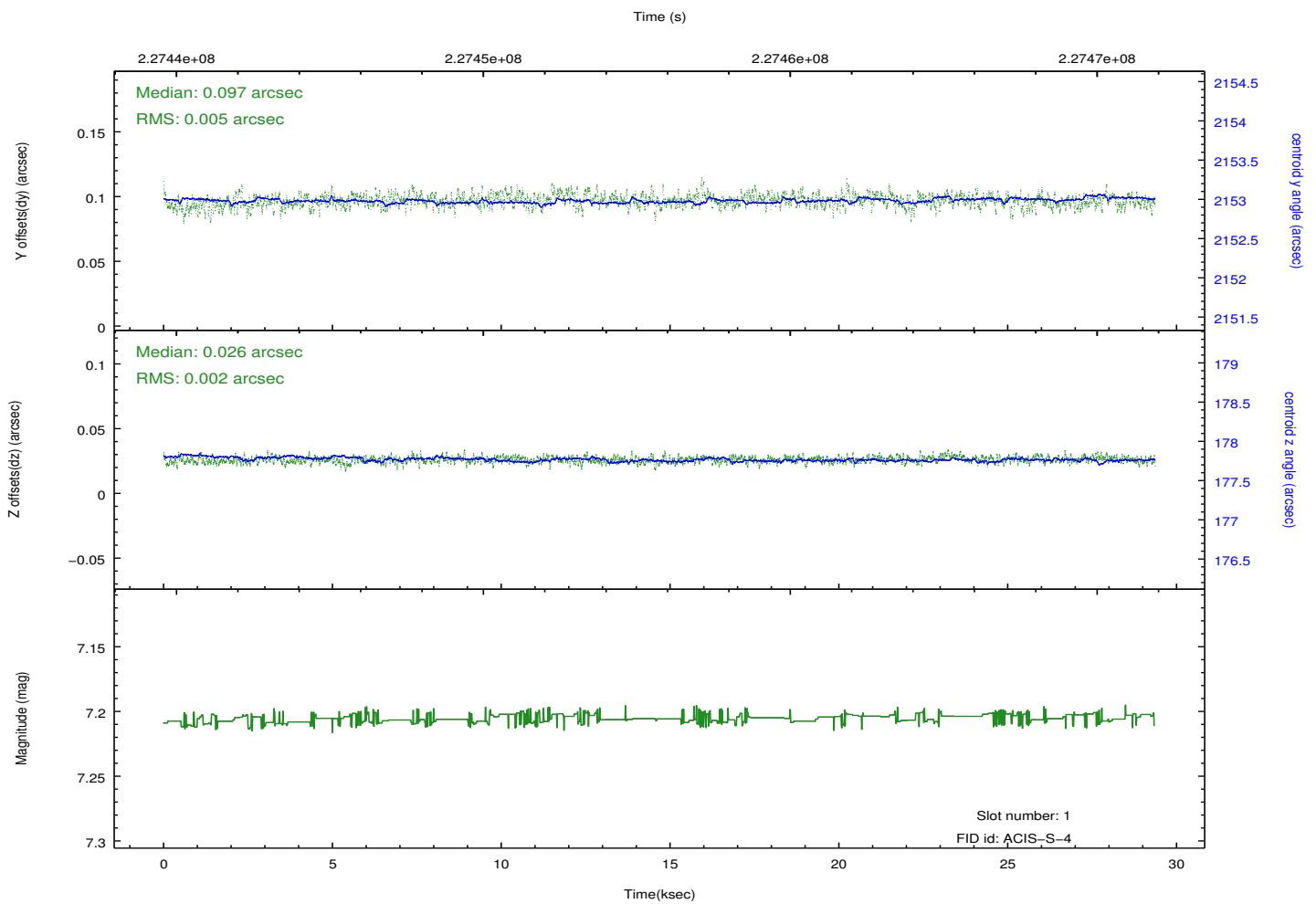
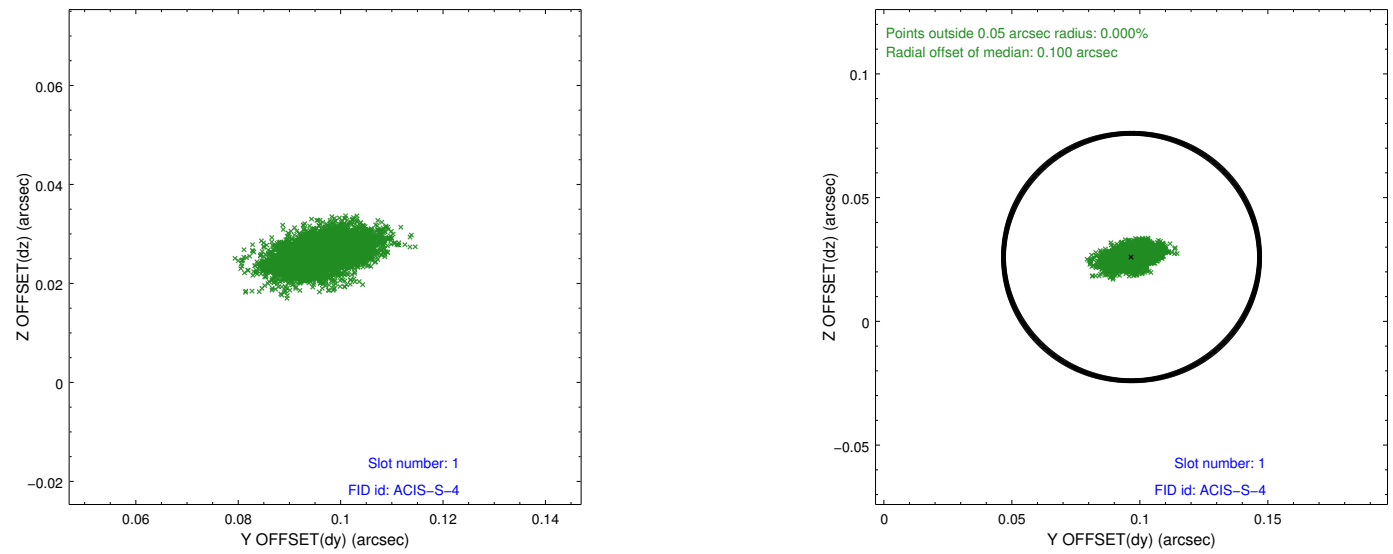


2.5 FID Slots

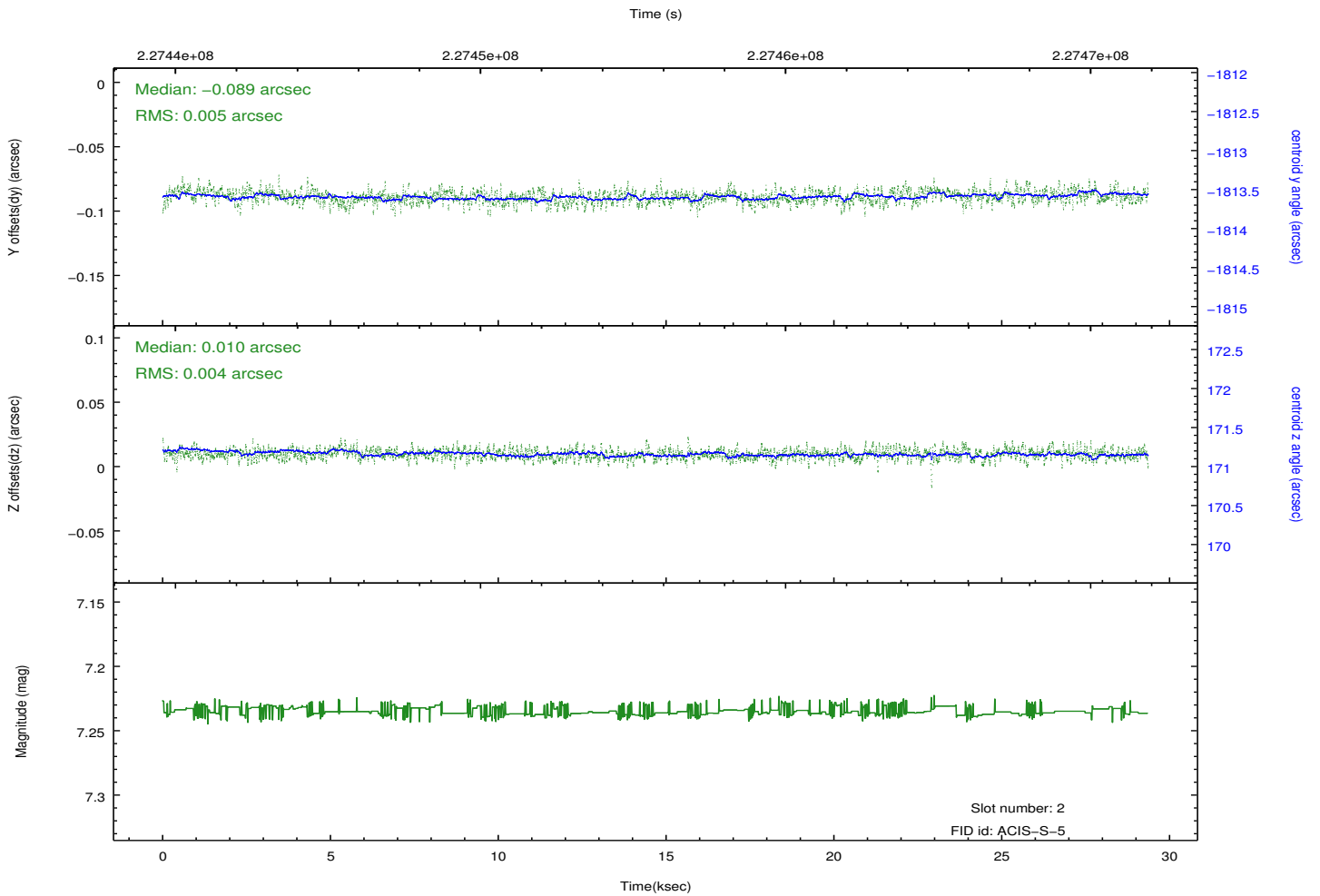
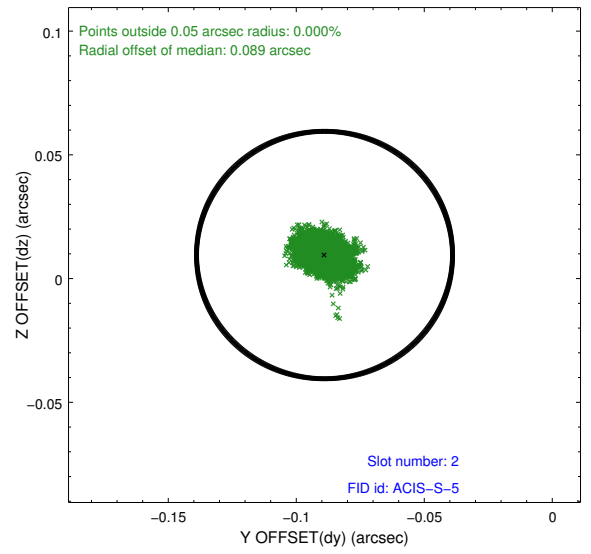
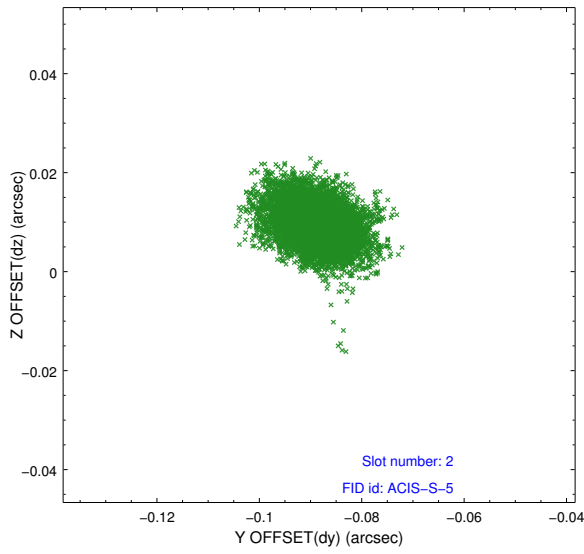
2.5.1 Slot 0



2.5.2 Slot 1



2.5.3 Slot 2



A Summary

A.1 Status

V&V Scientist	Jen Lauer
V&V Date (YYYY-MM-DD)	2013.01.14
V&V Edition	1
V&V Disposition and Status	OK
V&V Charge Time	29.03455

A.2 Comments