

V&V Reference Report

L2 ASCDS Version : 8.4.3

Observation 5924 - L2 Version 2
Chandra X-Ray Center

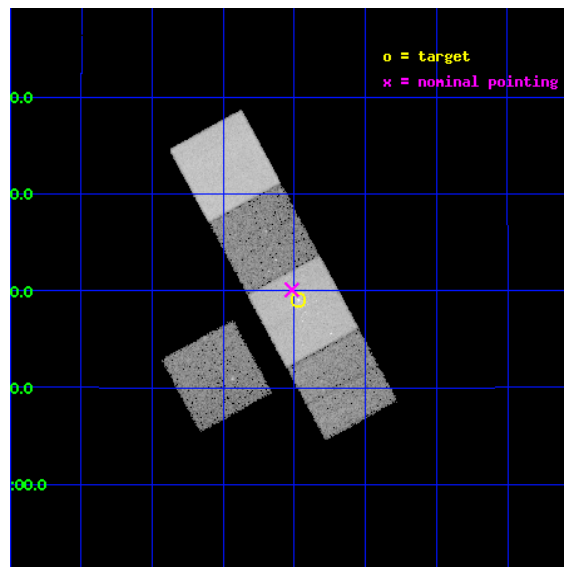
L2 Processing Date : Mar 17 2012

Contents

1	Front	2
2	OBI	3
2.1	OBI	3
2.1.1	Images	3
2.1.2	Bias	3
2.1.3	Parameters	4
2.1.4	Events	4
2.2	Compared Parameters	5
2.3	Aspect	6
2.4	Star Slots	9
2.4.1	Slot 3	9
2.4.2	Slot 4	10
2.4.3	Slot 5	11
2.4.4	Slot 6	12
2.4.5	Slot 7	13
2.5	FID Slots	14
2.5.1	Slot 0	14
2.5.2	Slot 1	15
2.5.3	Slot 2	16
A	Summary	17
A.1	Status	17
A.2	Comments	17

1 Front

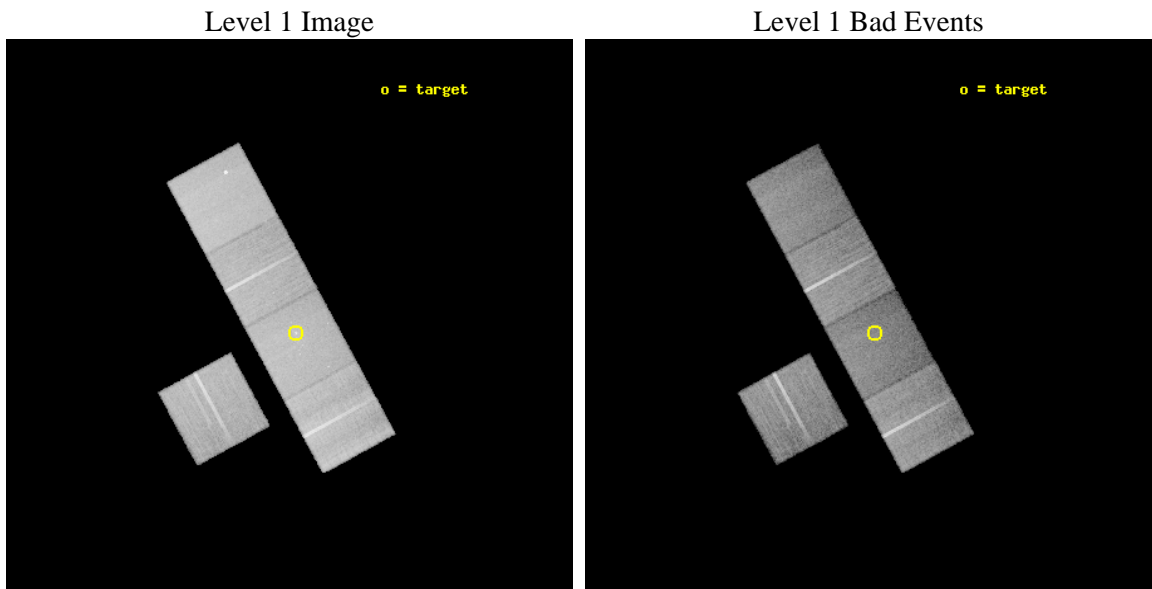
seq_num	600443	Sequence number
obs_id	5924	Observation id
title	Low Mass X-ray Binaries and Globular Clusters in the Early-Type Galaxy NGC 4365	Proposal title
observer	Prof. Gregory Sivakoff	Principal investigator
object	NGC4365	Source name
dtcycle	0	
cycle	P	events from which exps? Prim/Second/Both
ra_targ	186.117917	Observer's specified target RA [deg]
dec_targ	7.317722	Observer's specified target Dec [deg]
ra_nom	186.12940760585	Nominal RA [deg]
dec_nom	7.3350925477647	Nominal Dec [deg]
roll_nom	61.45516699884	Nominal Roll [deg]
revision	2	Processing version of data
ontime	27124.999947816	Sum of GTIs [s]
livetime	26770.591854363	Livetime [s]
ontime3	27121.858957678	Sum of GTIs [s]
ontime5	27124.999947816	Sum of GTIs [s]
ontime6	27115.577017128	Sum of GTIs [s]
ontime7	27124.999947816	Sum of GTIs [s]
ontime8	27106.154096335	Sum of GTIs [s]
l2events	264111	Number of level 2 events



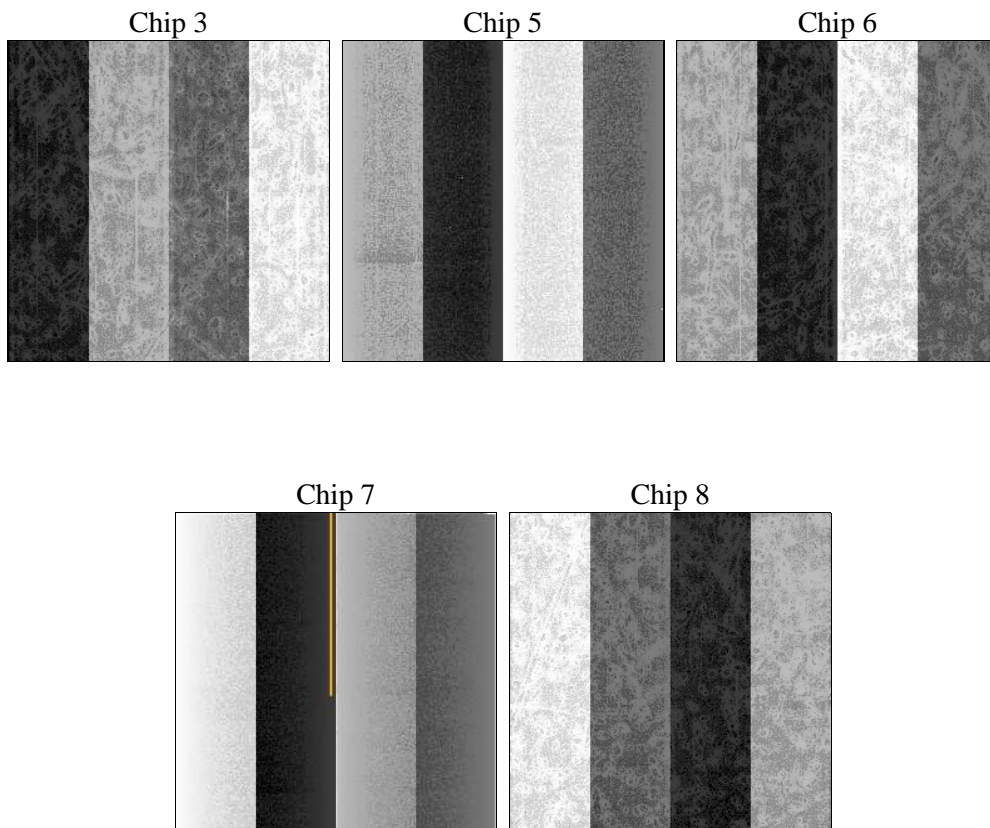
2 OBI

2.1 OBI

2.1.1 Images



2.1.2 Bias



2.1.3 Parameters

obi_num	0	Obi number	sched_exp_time	27000.000000	[s] Scheduled observation exposure time
ascdsver	8.4.3	Processing system revision	ontime	27124.999947816	Sum of GTIs [s]
caldbver	4.4.8	 	ontime3	27121.858957678	Sum of GTIs [s]
date	2012-03-17T16:25:17	Date and time of file creation	ontime5	27124.999947816	Sum of GTIs [s]
revision	2	Processing version of data	ontime6	27115.577017128	Sum of GTIs [s]
			ontime7	27124.999947816	Sum of GTIs [s]
			ontime8	27106.154096335	Sum of GTIs [s]
			l1events	1061367	Number of level 1 events

2.1.4 Events

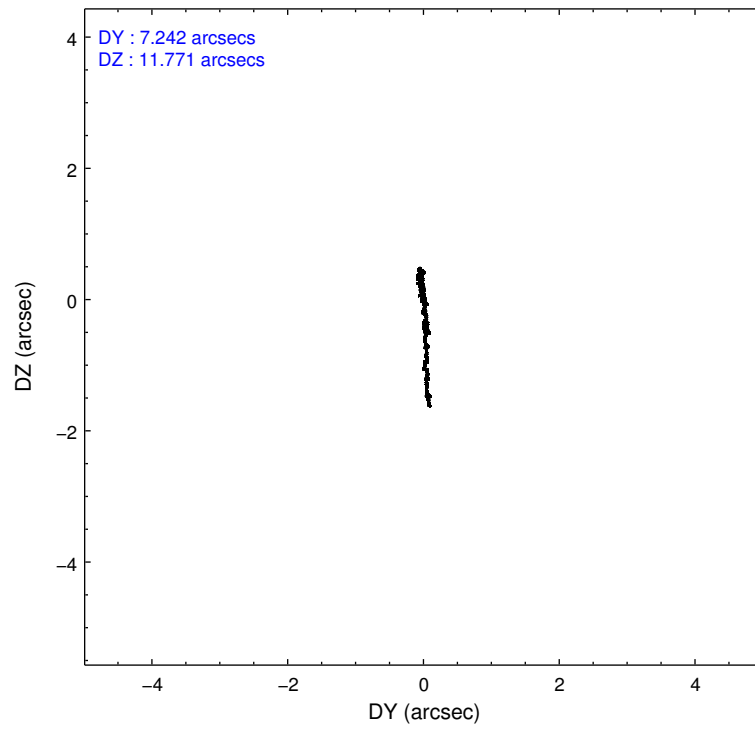
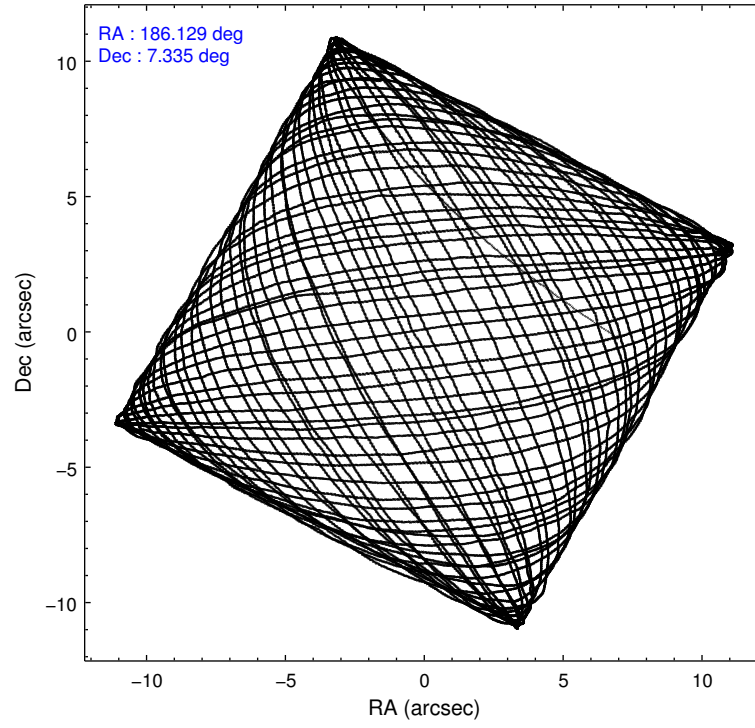
	ccd 3	ccd 5	ccd 6	ccd 7	ccd 8
level 1 events	175222	250200	190271	210966	234708
rejected events	158077	129035	170251	114147	180497
rejected %	90%	51%	89%	54%	76%

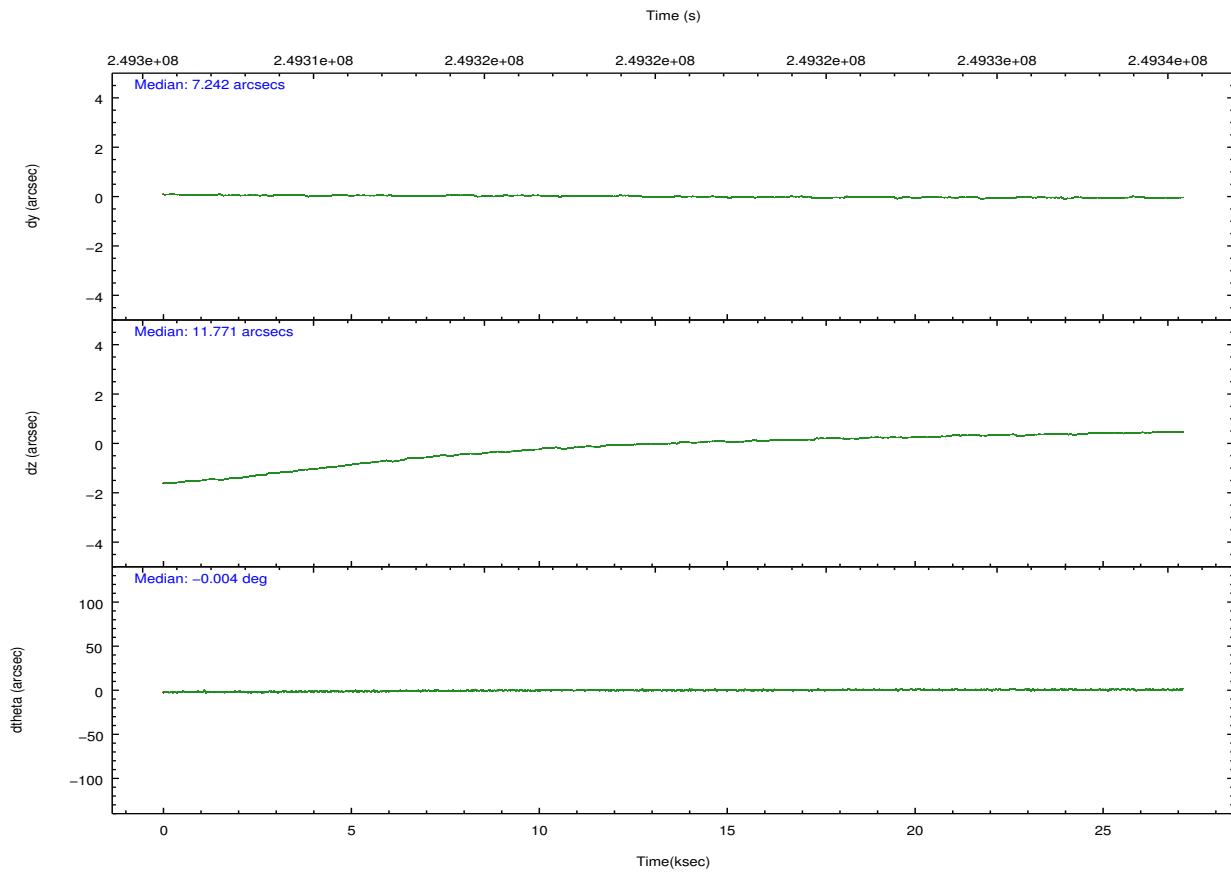
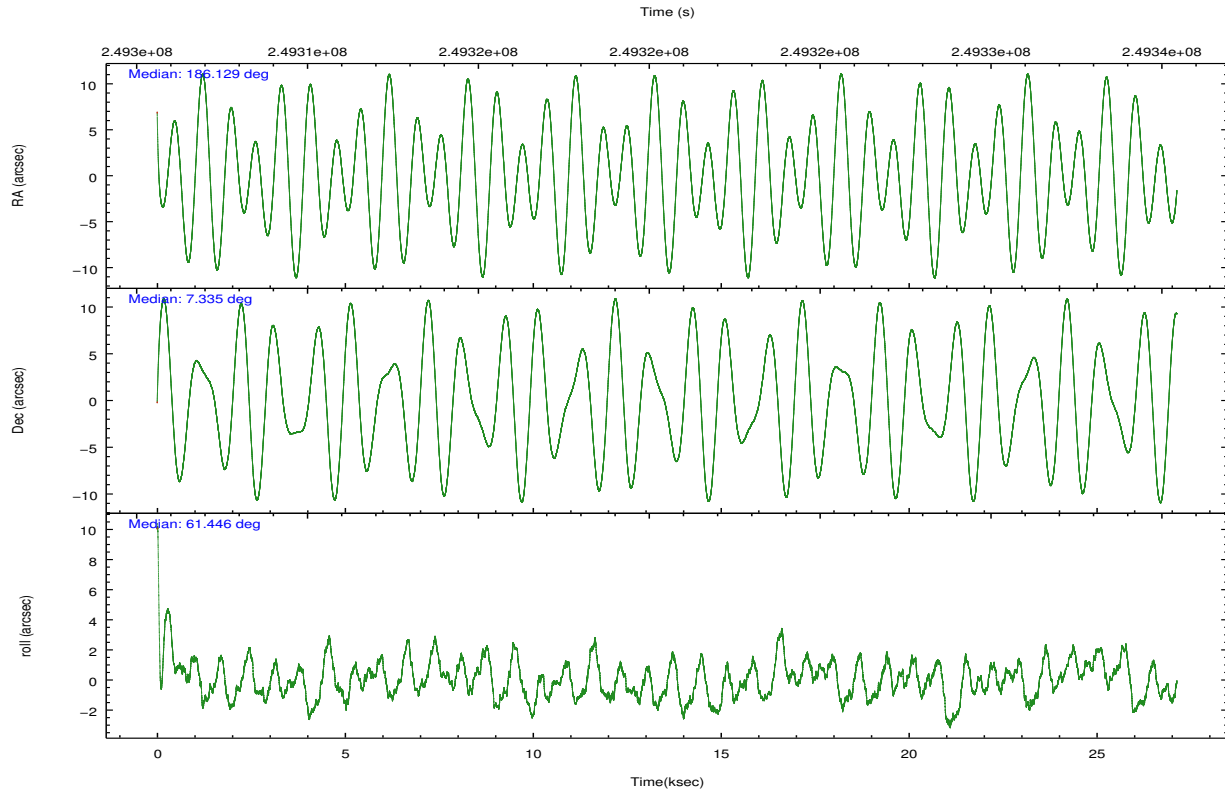
	ccd 3	ccd 5	ccd 6	ccd 7	ccd 8
grade 0 events	6306	10404	7536	10109	16749
	3%	4%	3%	4%	7%
grade 1 events	95	250	95	170	176
	0%	0%	0%	0%	0%
grade 2 events	3575	35881	4353	19843	12262
	2%	14%	2%	9%	5%
grade 3 events	2031	5882	2184	9403	5804
	1%	2%	1%	4%	2%
grade 4 events	2021	5873	2116	9349	5456
	1%	2%	1%	4%	2%
grade 5 events	7143	20634	7299	21761	10717
	4%	8%	3%	10%	4%
grade 6 events	3448	65214	4131	49606	14758
	1%	26%	2%	23%	6%
grade 7 events	150603	106062	162557	90725	168786
	85%	42%	85%	43%	71%

2.2 Compared Parameters

Parameter	Planned	Actual	Parameter	Planned	Actual
Instrument	ACIS	ACIS	Obspar format version number	7	7
Detector	ACIS-35678	ACIS-35678	Obspar file type	PREDICTED	ACTUAL
Grating	NONE	NONE	Obspar update status	NONE	UPDATED
Data mode	VFAINT	VFAINT	Number of optional ACIS chips dropped	0	0
Observation mode	POINTING	POINTING	On-chip summing requested	N	N
[deg] Pointing RA	186.130477	186.1294076058465	Subarray requested	NONE	NONE
[deg] Pointing Dec	7.307859	7.335092547764694	Alternating exposures requested	N	N
[deg] Pointing Roll	61.298402	61.45516699883962	[s] Primary exposure time	0.000000	3.1
[mm] SIM focus pos	-0.684267	-0.6828225247311905			
[mm] SIM defocus	0	0.001444936568705701			
[mm] SIM translation stage pos	-190.132523	-190.1400660498719			
[mm] SIM translation stage offset	0	0.00754346686406393			
[s] Observation start time (MET)	249307085.184000	249305898.7825			
Observation start date	2005-11-25T11:57:01	2005-11-25T11:38:18			
[s] Observation end time (MET)	249334085.184000	249335272.72136			
Observation end date	2005-11-25T19:27:01	2005-11-25T19:47:52			
Read mode	TIMED	TIMED			

2.3 Aspect



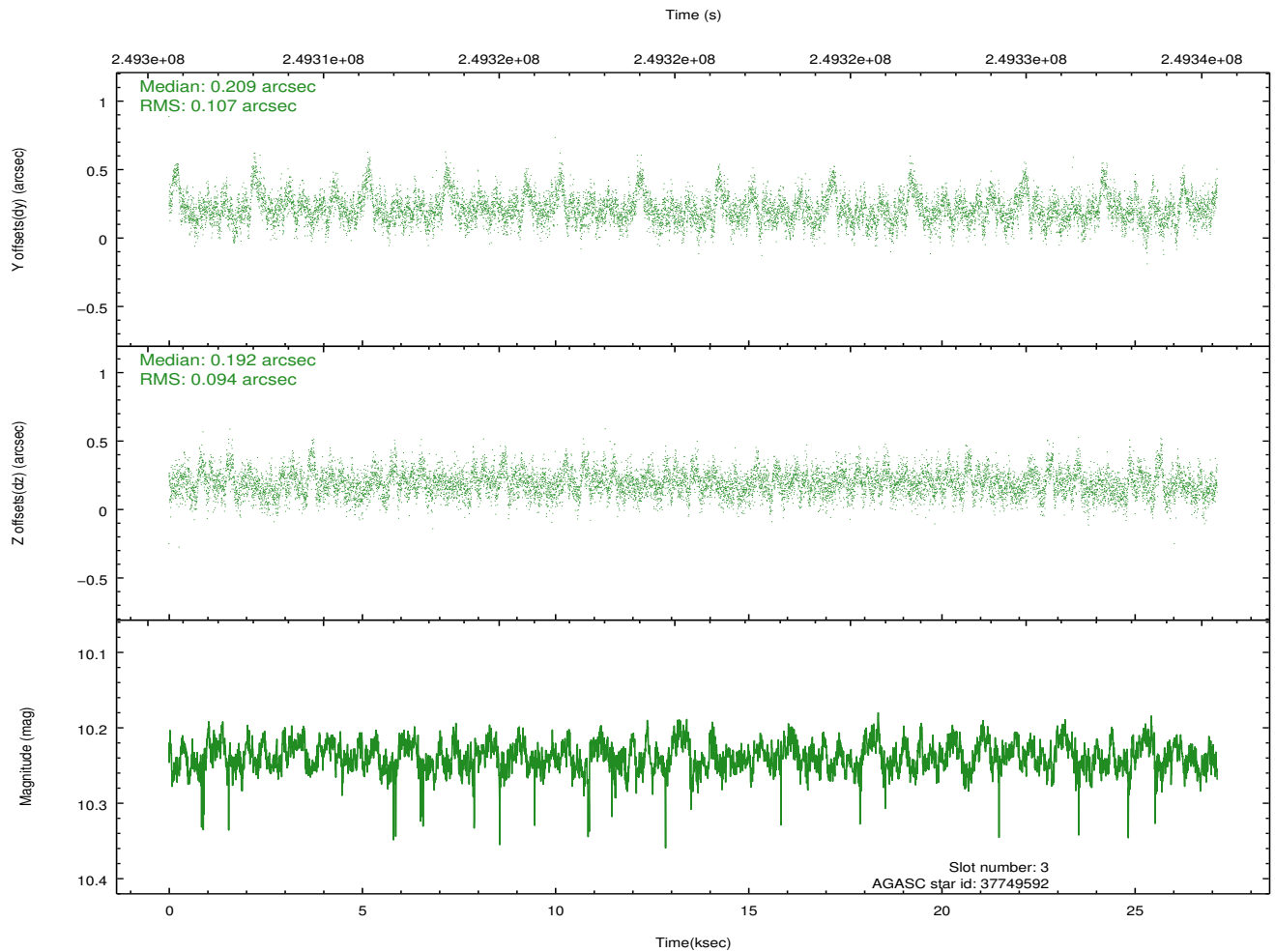
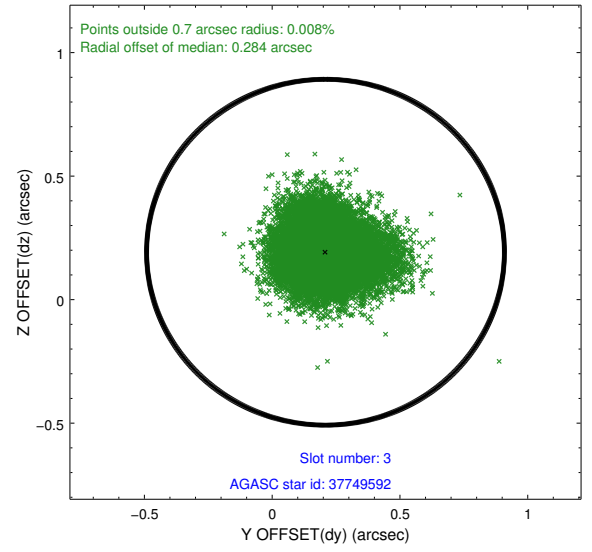
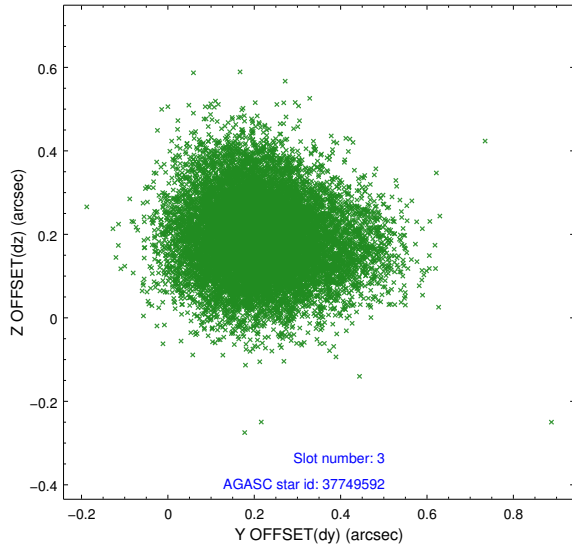


Slot Statistics

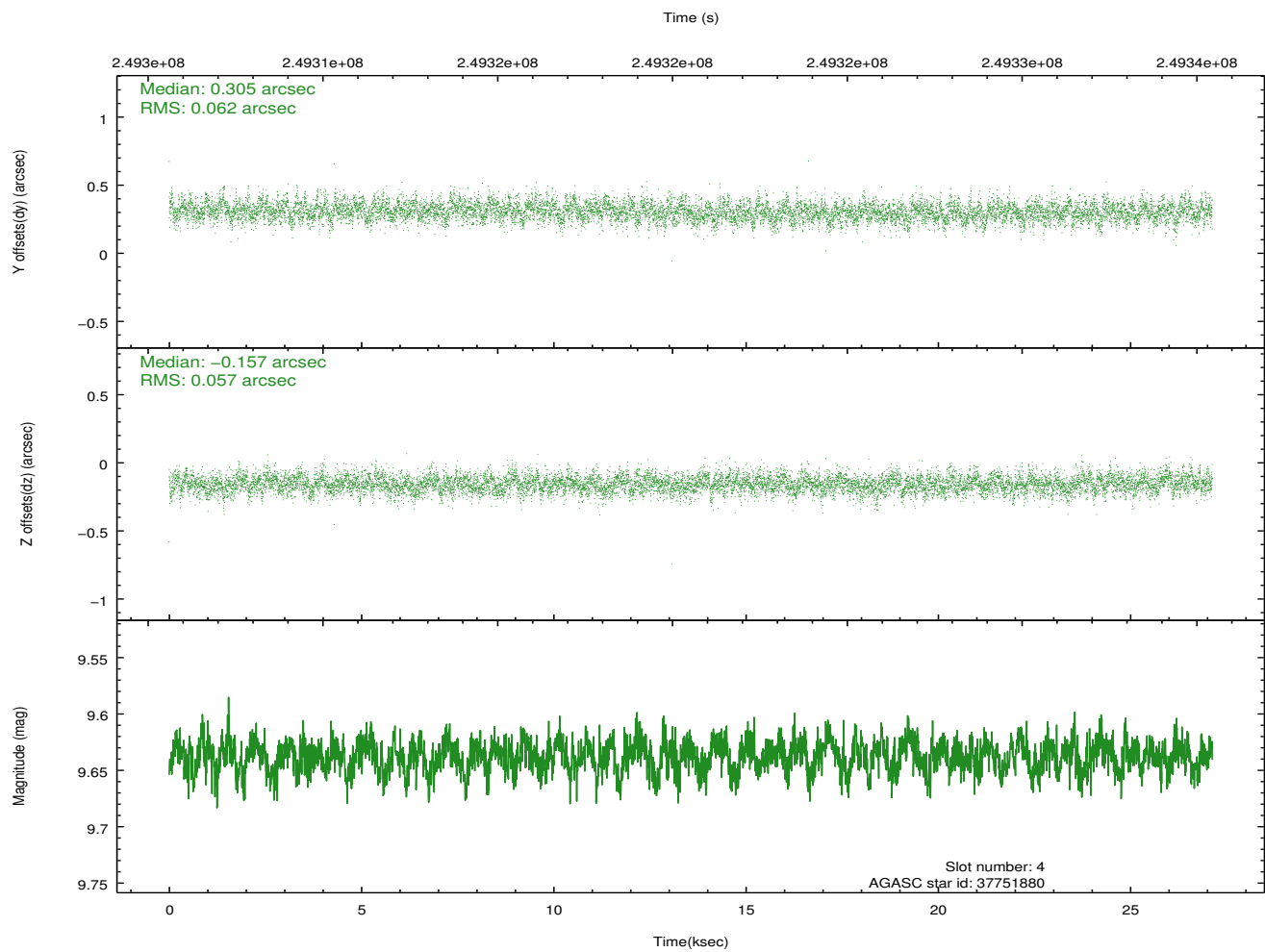
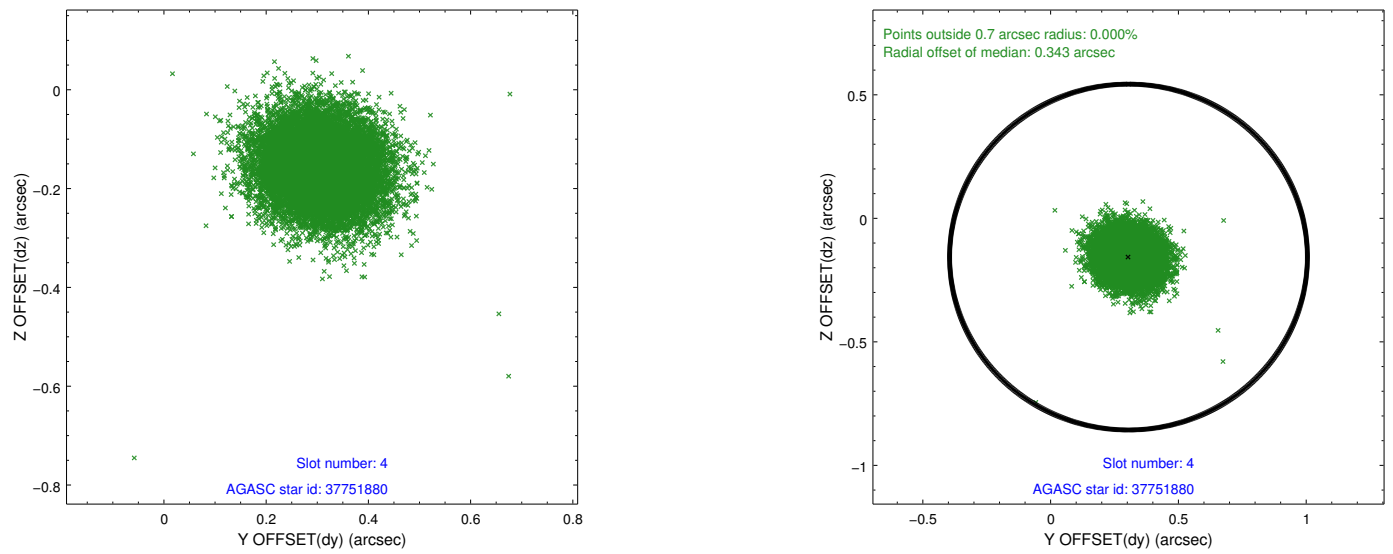
slot	status	id	mag	n_pts	med_dy	med_dz	dr1	dr2	ra	dec	mean_y	mean_z
0	FID	ACIS-S-2	7.10	6618	-0.053	-0.037	0.009	0.018	0.000000	0.000000	-760.04	-1732.89
1	FID	ACIS-S-4	7.20	6618	0.068	0.015	0.009	0.017	0.000000	0.000000	2153.30	175.56
2	FID	ACIS-S-6	7.35	6618	-0.043	0.028	0.010	0.017	0.000000	0.000000	402.06	813.07
3	GUIDE	37749592	10.24	13220	0.209	0.192	0.150	0.247	186.177253	6.631115	-2056.30	-1315.40
4	GUIDE	37751880	9.64	13223	0.305	-0.157	0.089	0.146	185.771871	6.844190	-2078.99	322.66
5	GUIDE	37753024	8.01	13232	-0.291	0.362	0.083	0.130	186.830113	7.241612	992.64	-2304.06
6	GUIDE	114565080	10.20	13214	-0.205	0.070	0.143	0.228	186.537681	7.759404	2124.20	-492.53
7	GUIDE	114434008	8.78	13231	-0.021	-0.472	0.087	0.141	185.534773	7.569663	-193.11	2317.87

2.4 Star Slots

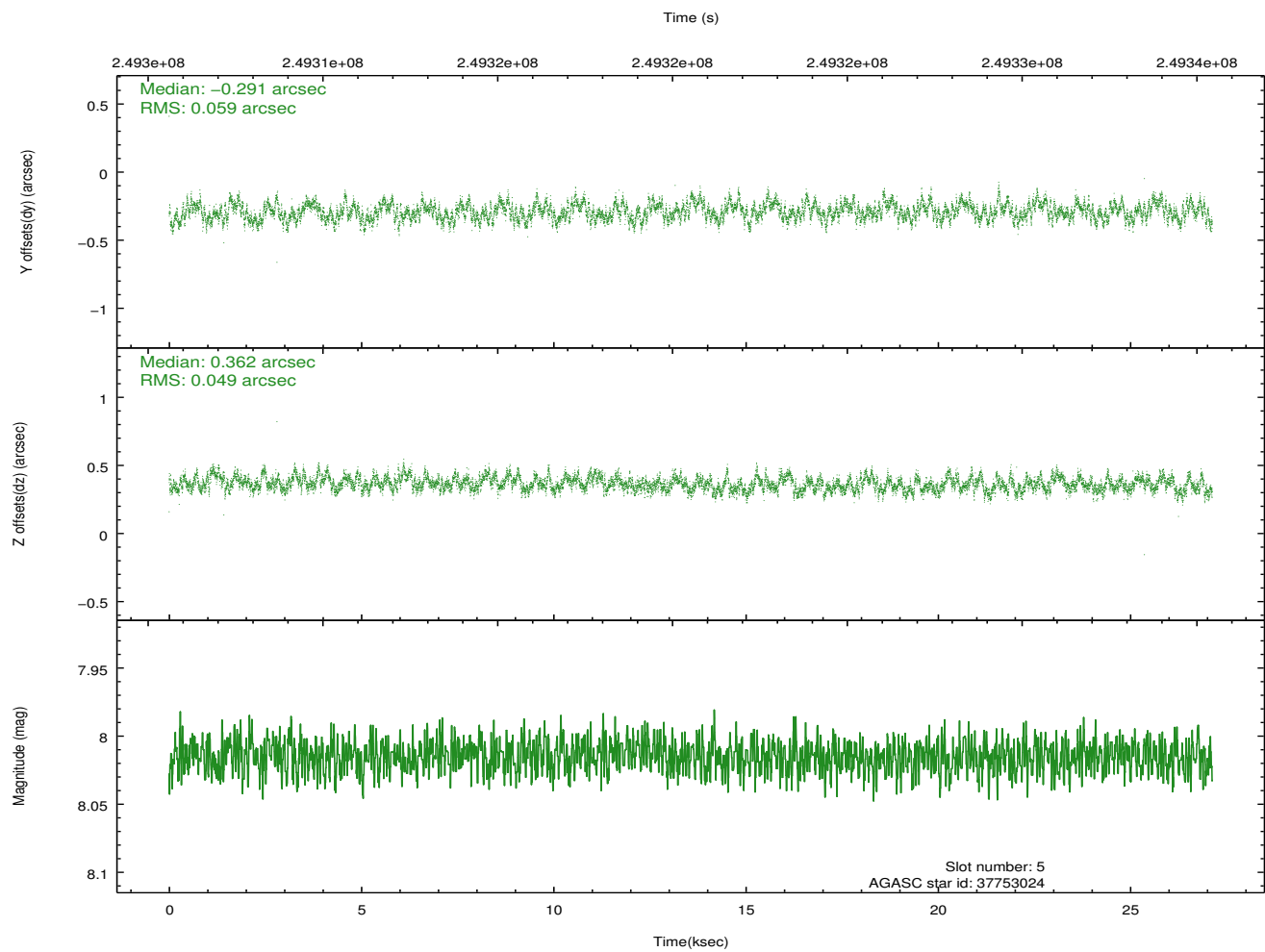
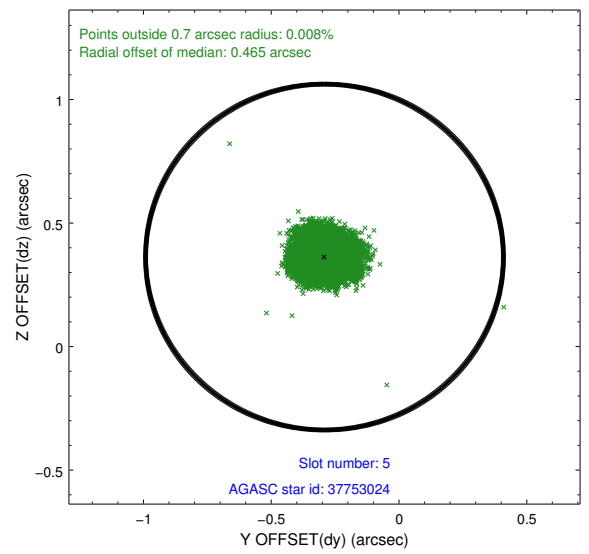
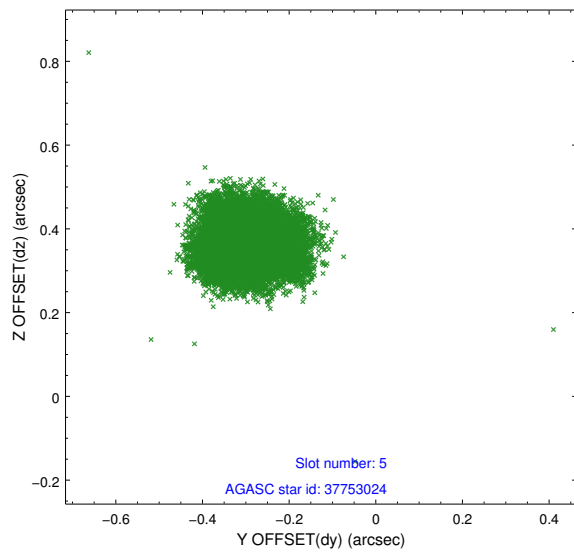
2.4.1 Slot 3



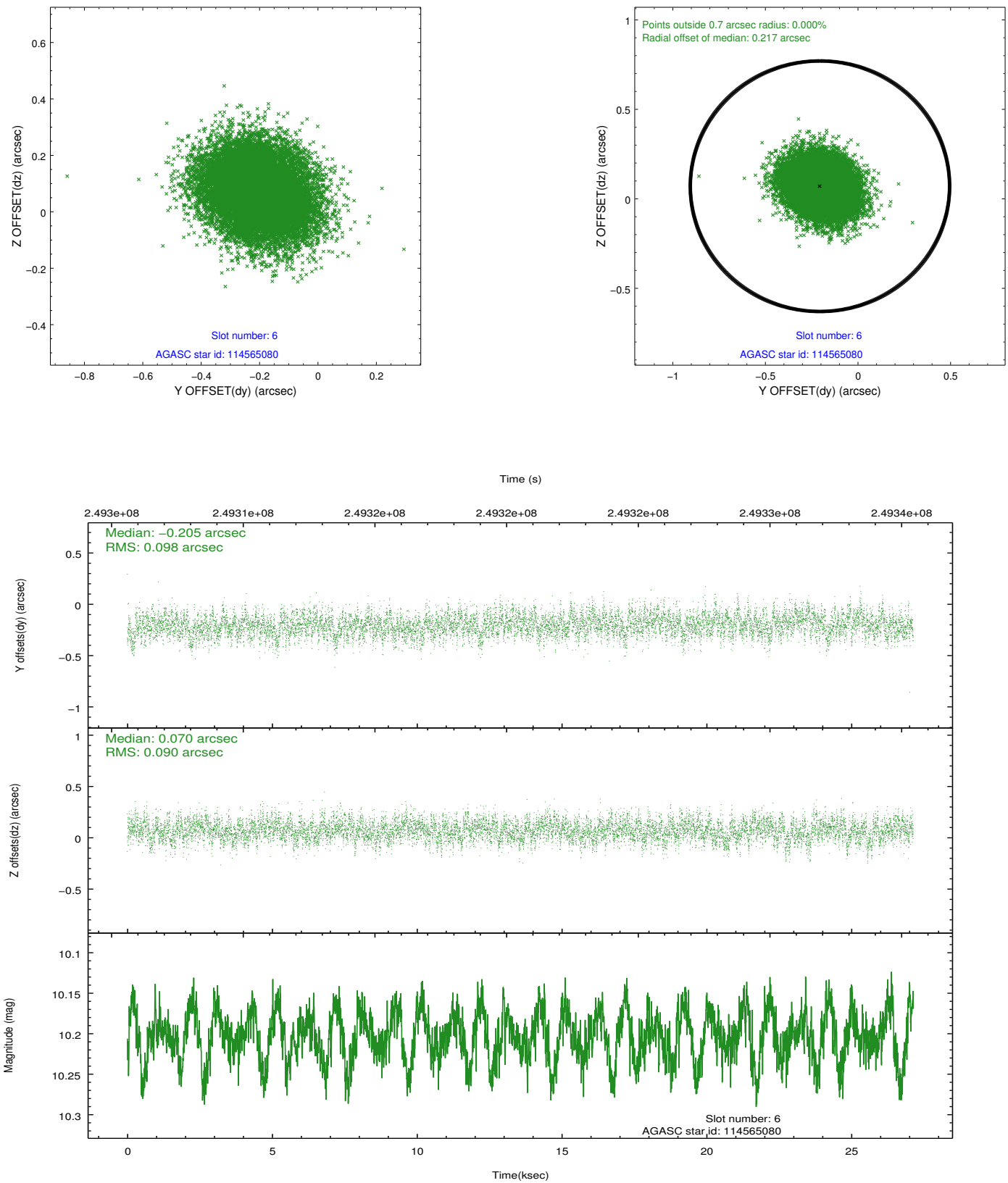
2.4.2 Slot 4



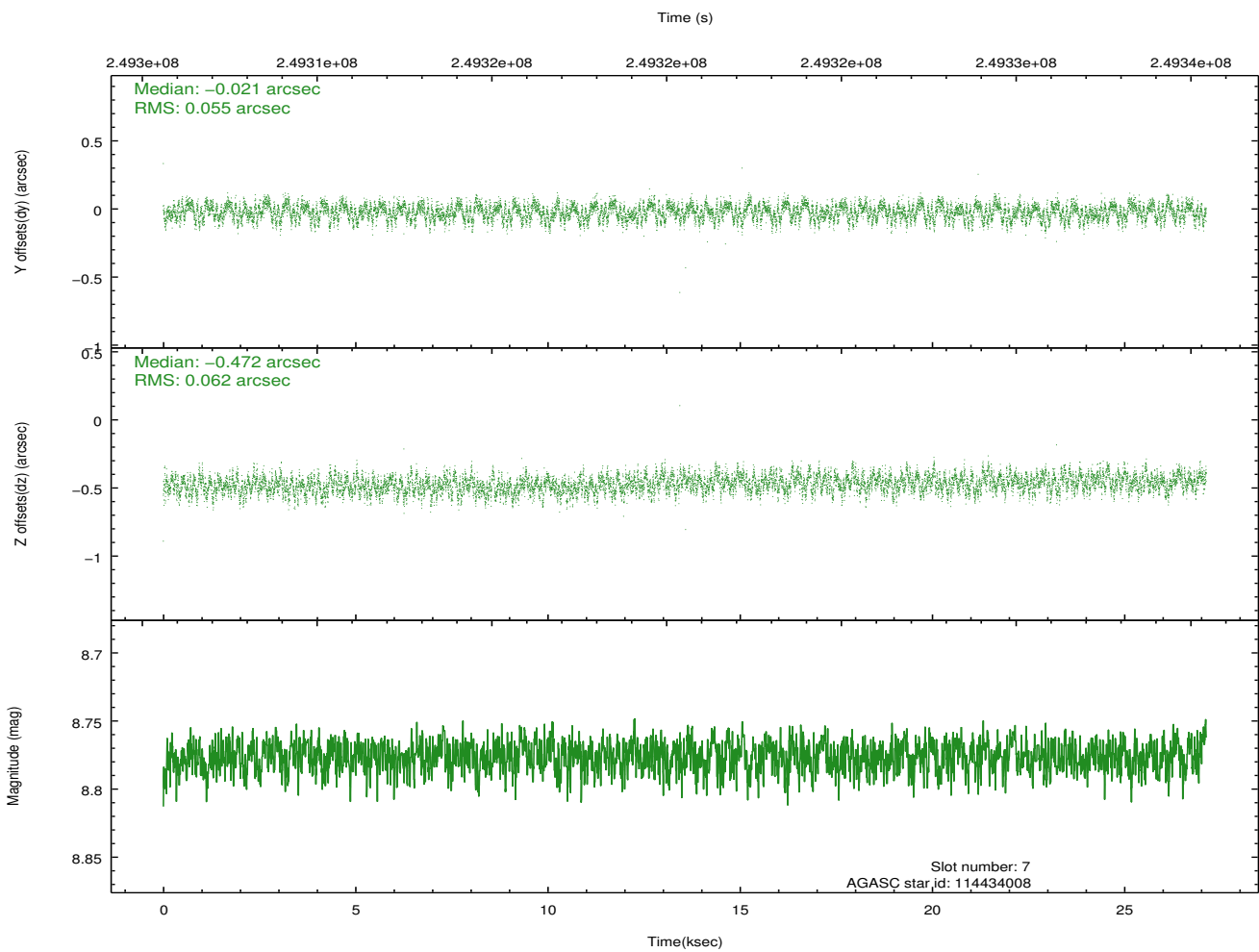
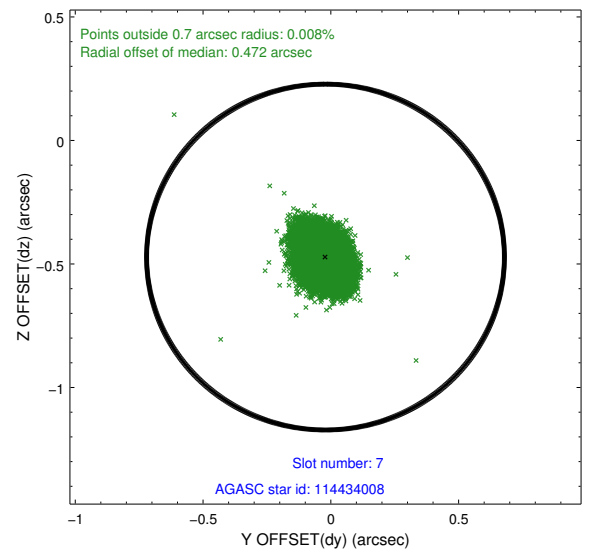
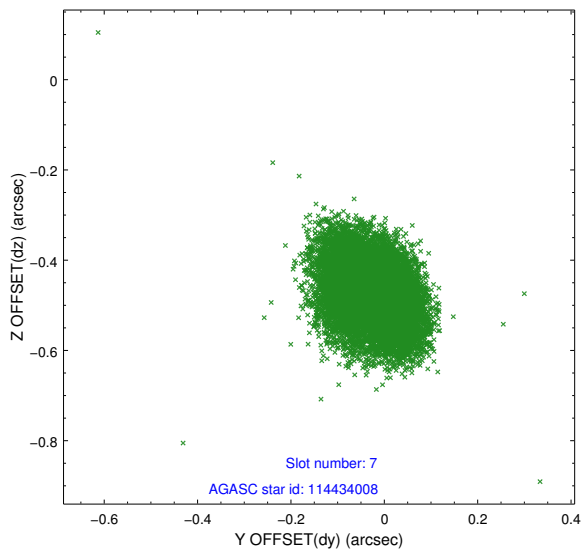
2.4.3 Slot 5



2.4.4 Slot 6

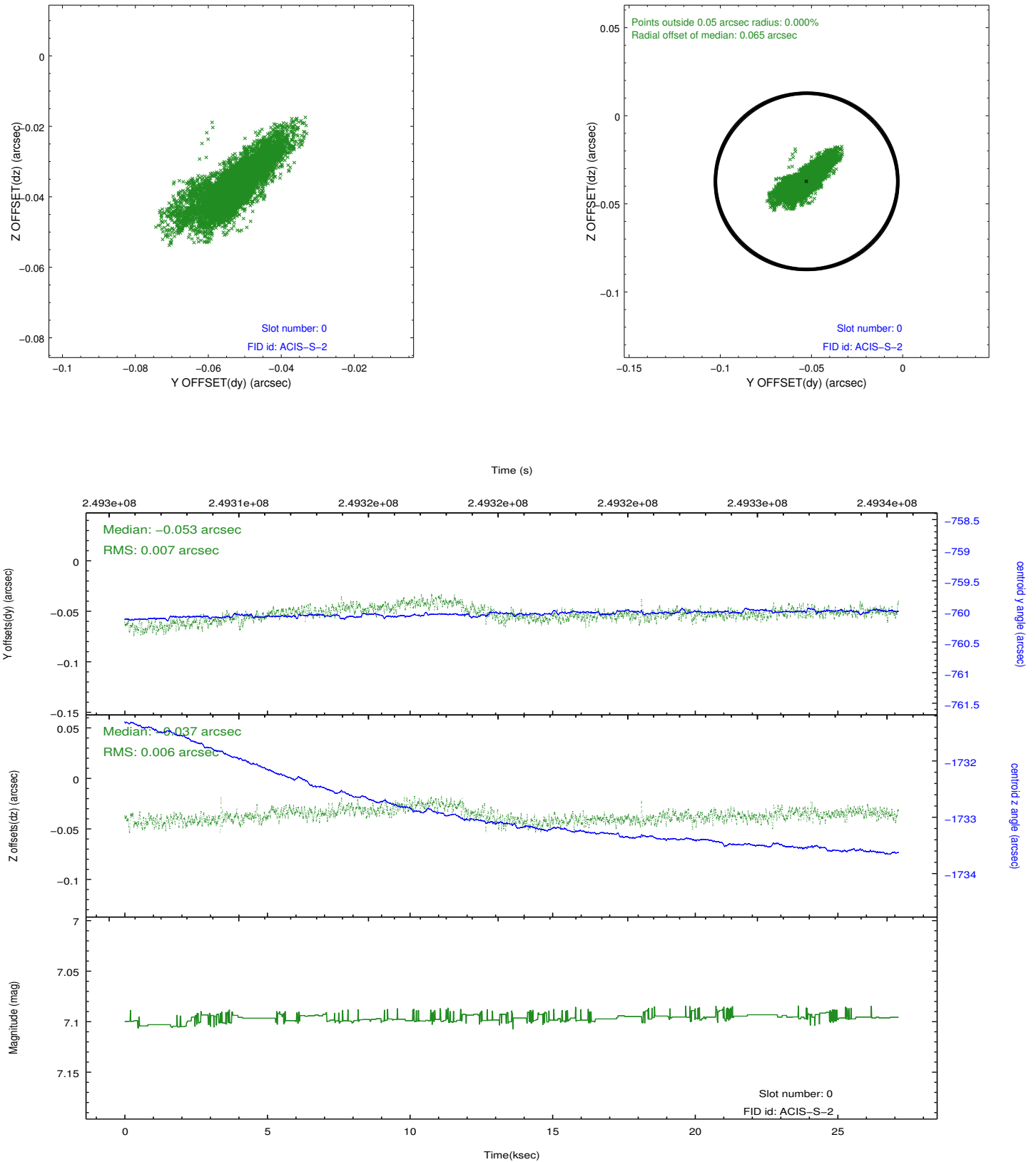


2.4.5 Slot 7

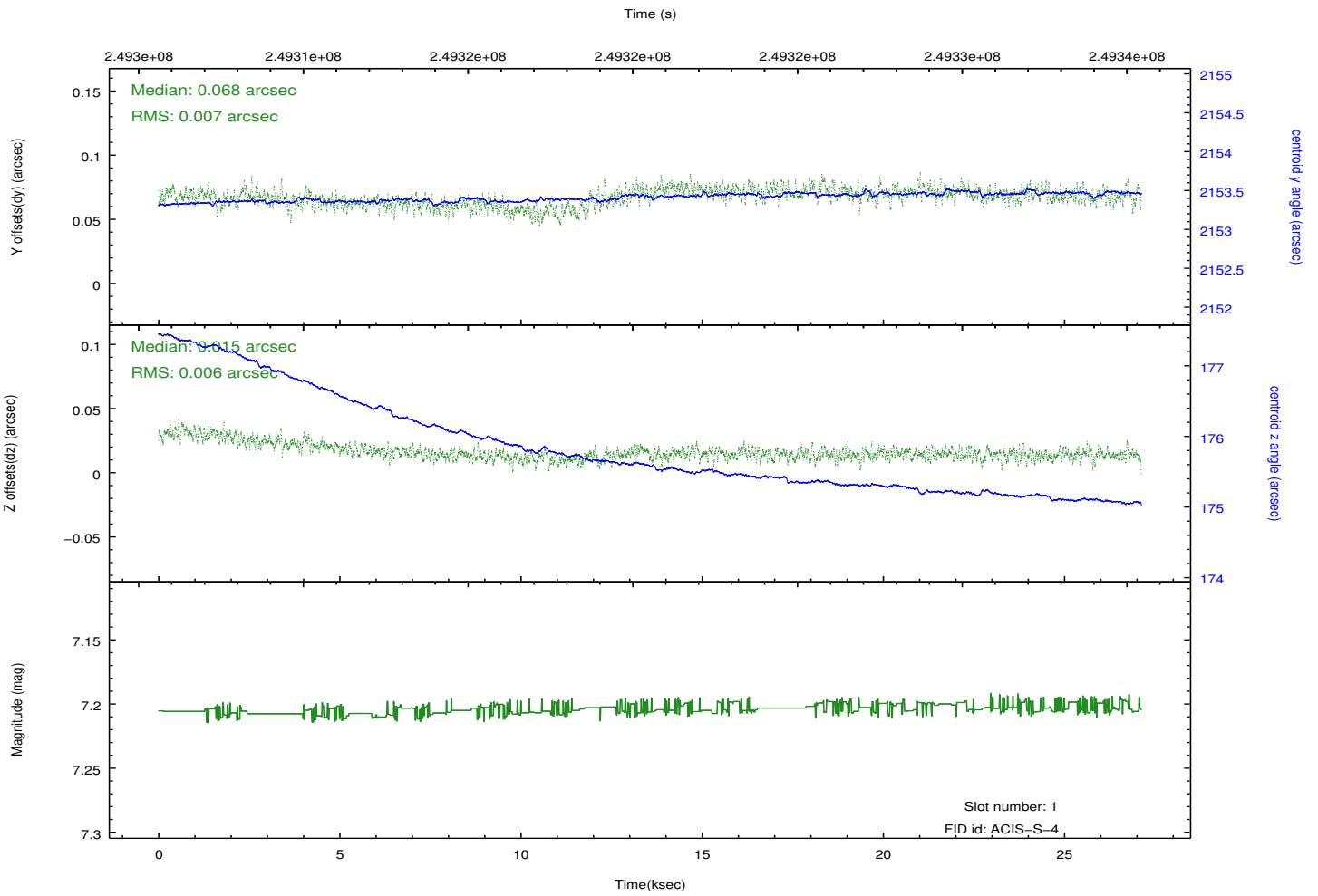
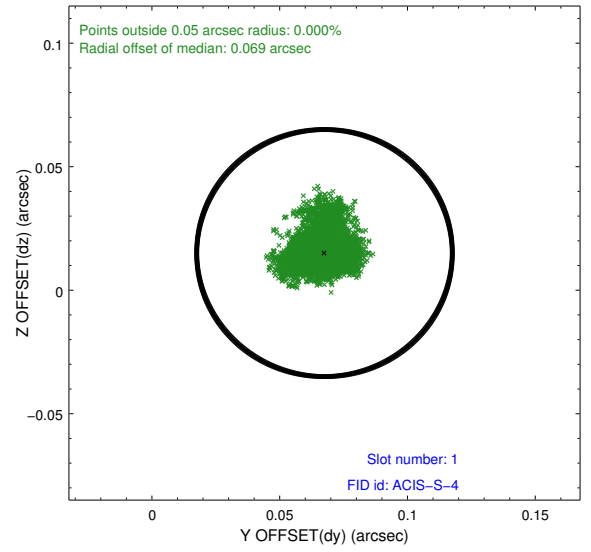
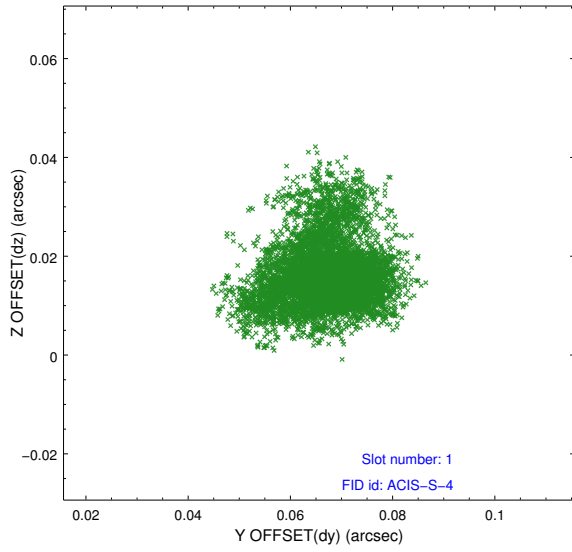


2.5 FID Slots

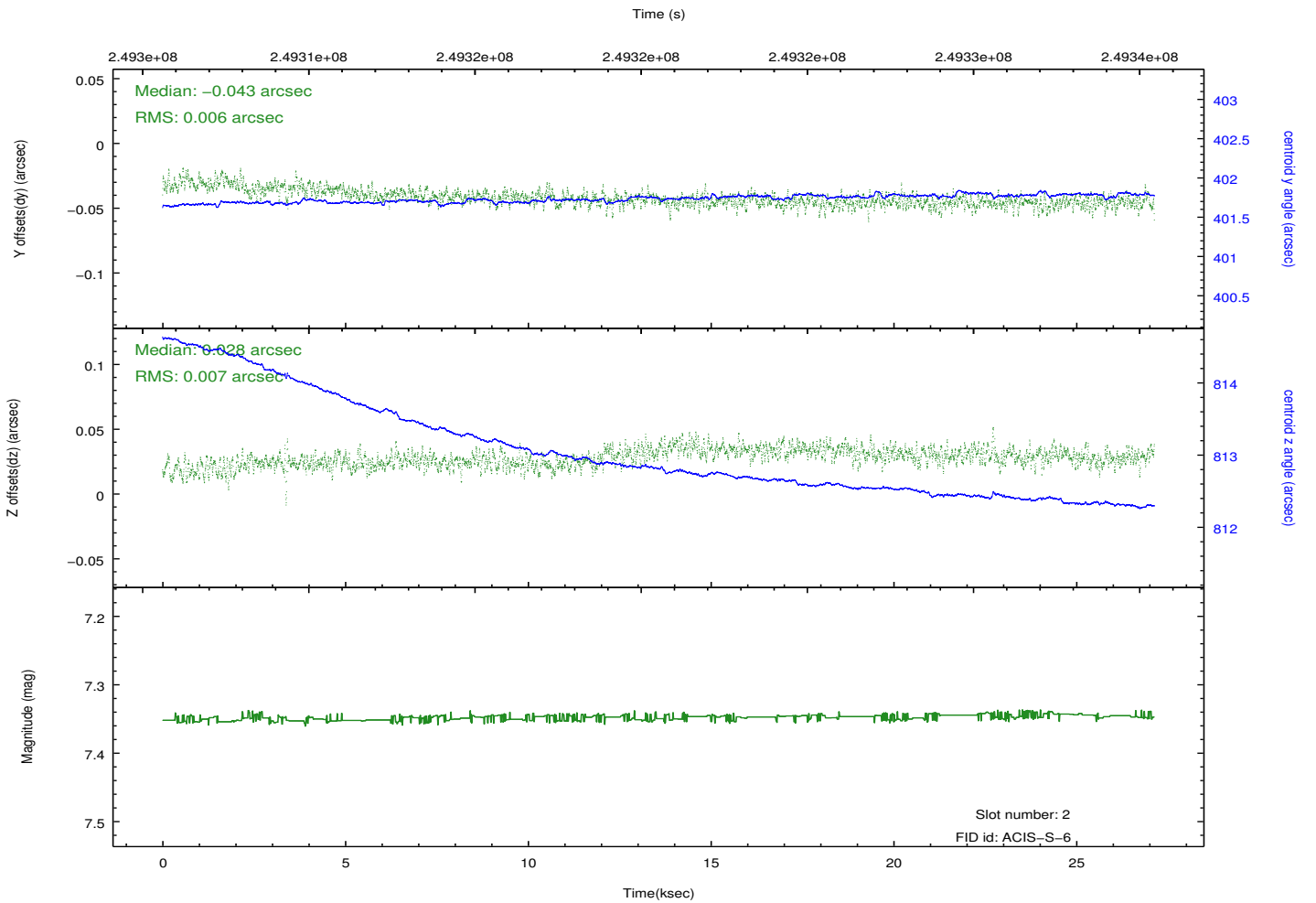
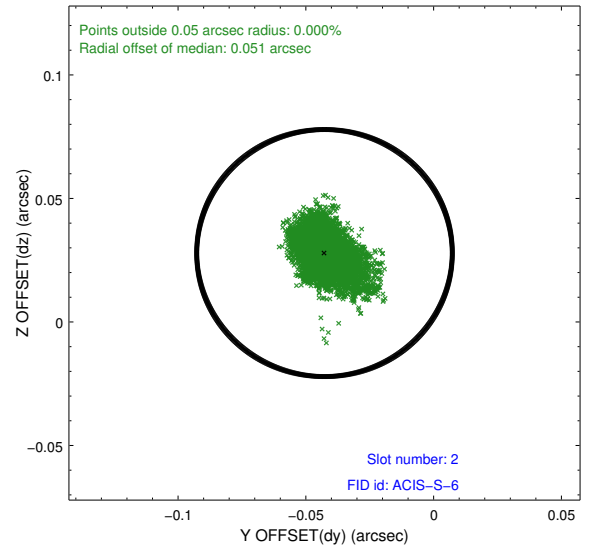
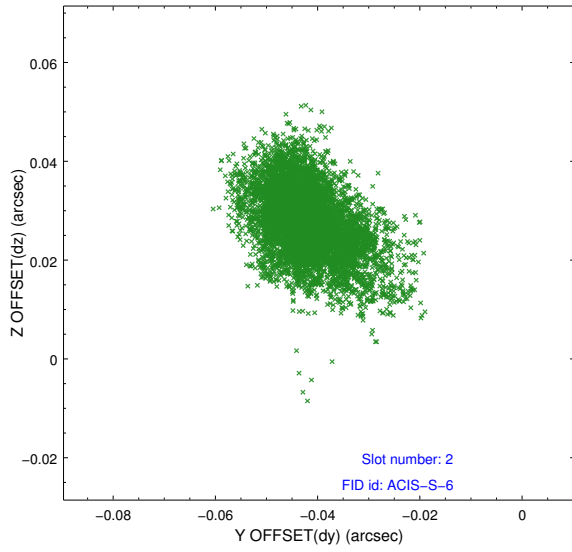
2.5.1 Slot 0



2.5.2 Slot 1



2.5.3 Slot 2



A Summary

A.1 Status

V&V Scientist	Beth Sundheim
V&V Date (YYYY-MM-DD)	2012.03.19
V&V Edition	1
V&V Disposition and Status	OK
V&V Charge Time	27.12499

A.2 Comments