

V&V Reference Report

L2 ASCDS Version : 8.5.1.1

Observation 5954 - L2 Version 5
Chandra X-Ray Center

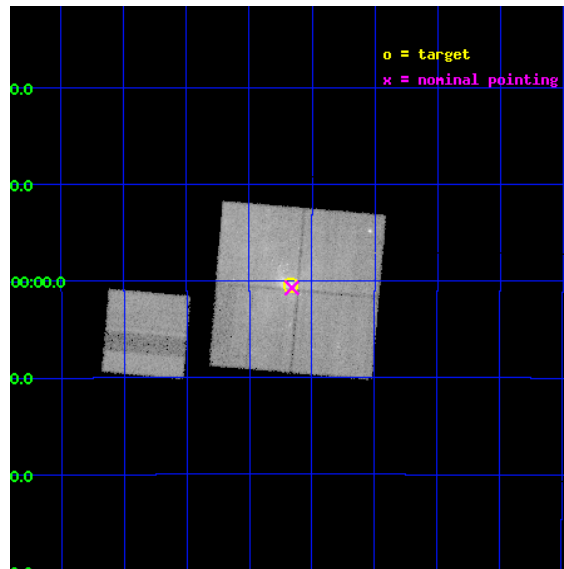
L2 Processing Date : Mar 7 2013

Contents

1	Front	2
2	OBI	3
2.1	OBI	3
2.1.1	Images	3
2.1.2	Bias	3
2.1.3	Parameters	4
2.1.4	Events	4
2.2	Compared Parameters	5
2.3	Aspect	6
2.4	Star Slots	9
2.4.1	Slot 3	9
2.4.2	Slot 4	10
2.4.3	Slot 5	11
2.4.4	Slot 6	12
2.4.5	Slot 7	13
2.5	FID Slots	14
2.5.1	Slot 0	14
2.5.2	Slot 1	15
2.5.3	Slot 2	16
A	Summary	17
A.1	Status	17
A.2	Comments	17

1 Front

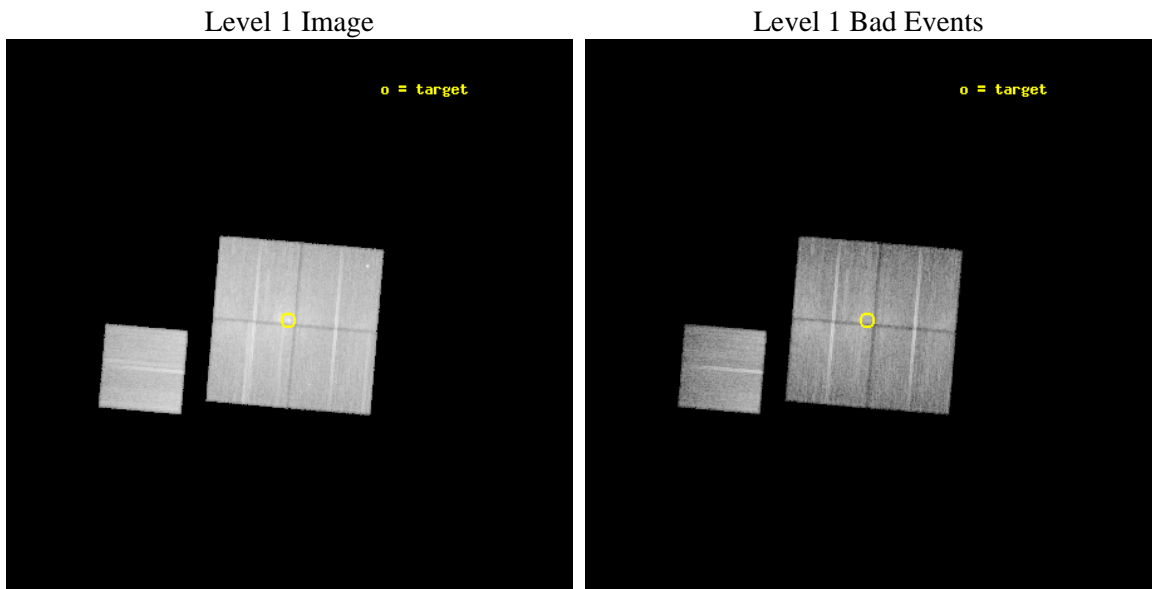
seq_num	600473	Sequence number
obs_id	5954	Observation id
title	Simultaneous Gamma-Ray to Sub-Millimeter Monitoring of Sagittarius A*	Proposal title
observer	Dr. Frederick Baganoff	Principal investigator
object	Sgr A*	Source name
dtcycle	0	
cycle	P	events from which exps? Prim/Second/Both
ra_targ	266.416667	Observer's specified target RA [deg]
dec_targ	-29.007778	Observer's specified target Dec [deg]
ra_nom	266.41502911599	Nominal RA [deg]
dec_nom	-29.012176197422	Nominal Dec [deg]
roll_nom	274.86093057438	Nominal Roll [deg]
revision	5	Processing version of data
ontime	18088.499965191	Sum of GTIs [s]
livetime	17852.160396586	Livetime [s]
ontime0	18085.358984917	Sum of GTIs [s]
ontime1	18088.499965191	Sum of GTIs [s]
ontime2	18082.218074292	Sum of GTIs [s]
ontime3	18088.499965191	Sum of GTIs [s]
ontime6	18088.499965191	Sum of GTIs [s]
l2events	261862	Number of level 2 events



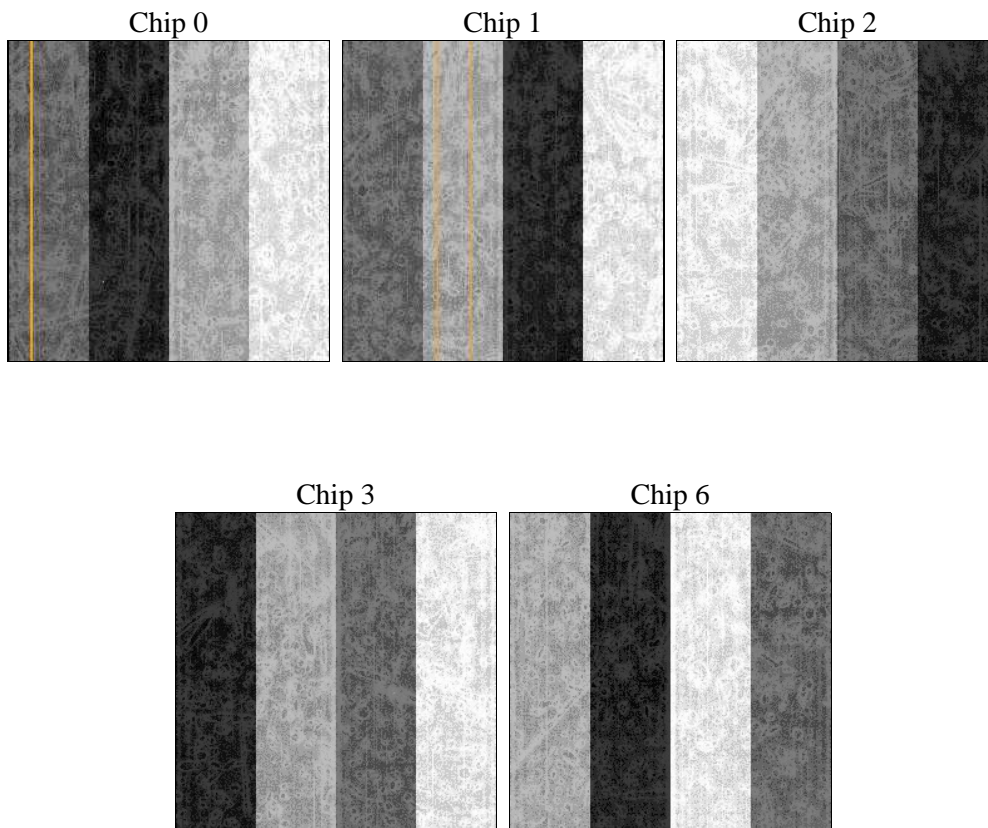
2 OBI

2.1 OBI

2.1.1 Images



2.1.2 Bias



2.1.3 Parameters

obi_num	0	Obi number	sched_exp_time	46500.000000	[s] Scheduled observation exposure time
ascdsver	8.5.1.1	Processing system revision	ontime	18088.499965191	Sum of GTIs [s]
caldsver	4.5.6	 	ontime0	18085.358984917	Sum of GTIs [s]
date	2013-03-07T08:46:52	Date and time of file creation	ontime1	18088.499965191	Sum of GTIs [s]
revision	5	Processing version of data	ontime2	18082.218074292	Sum of GTIs [s]
			ontime3	18088.499965191	Sum of GTIs [s]
			ontime6	18088.499965191	Sum of GTIs [s]
			l1events	1138701	Number of level 1 events

2.1.4 Events

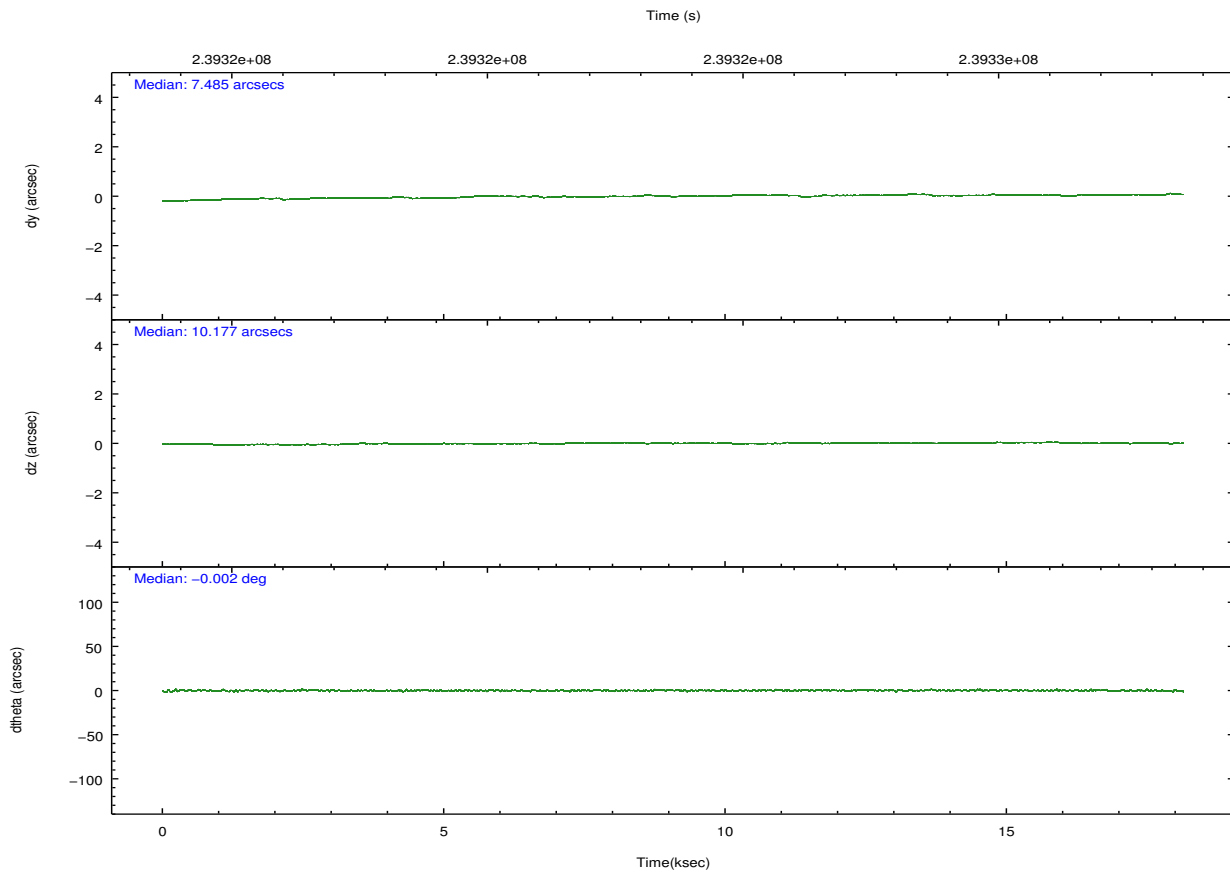
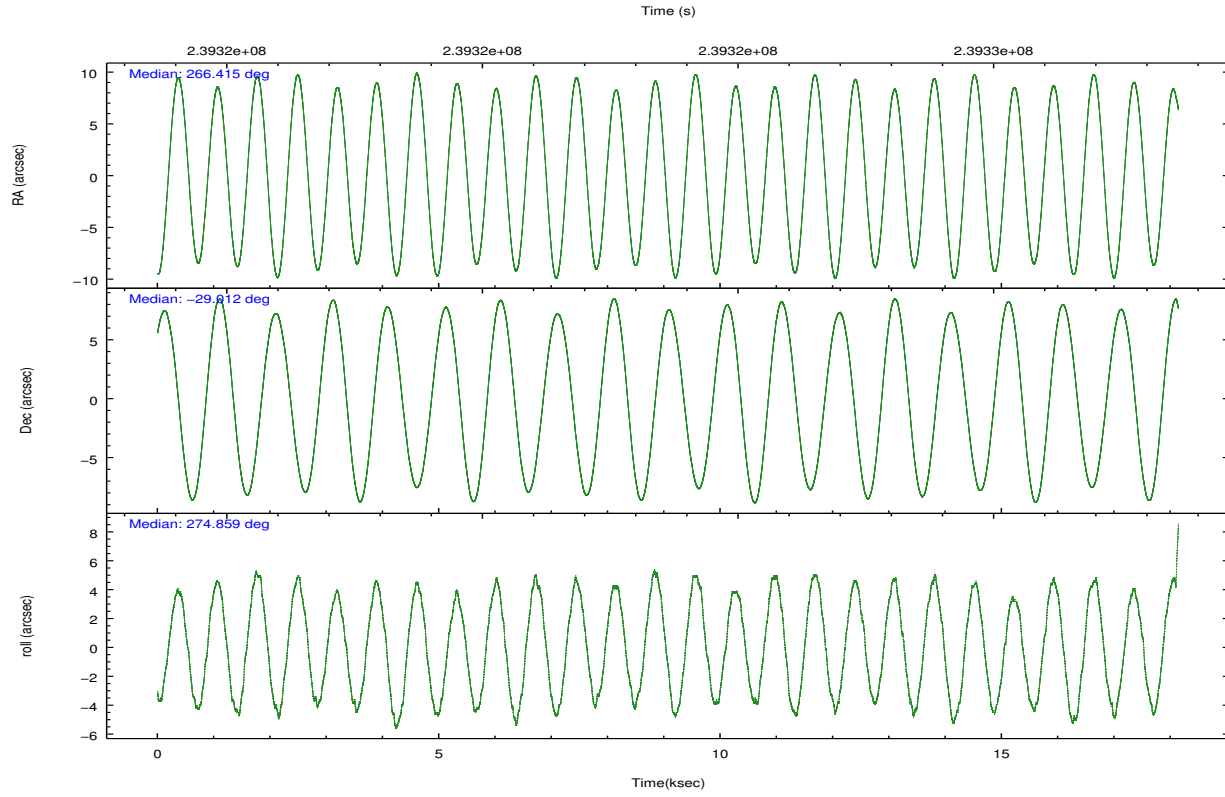
	ccd 0	ccd 1	ccd 2	ccd 3	ccd 6
level 1 events	203590	208769	248093	251119	227130
rejected events	144995	149090	183072	173468	178691
rejected %	71%	71%	73%	69%	78%

	ccd 0	ccd 1	ccd 2	ccd 3	ccd 6
grade 0 events	26605	24019	32680	39283	20014
	13%	11%	13%	15%	8%
grade 1 events	228	170	291	295	159
	0%	0%	0%	0%	0%
grade 2 events	16189	18009	15880	19406	15925
	7%	8%	6%	7%	7%
grade 3 events	2573	2902	2563	3449	1967
	1%	1%	1%	1%	0%
grade 4 events	2571	2625	4243	3680	2021
	1%	1%	1%	1%	0%
grade 5 events	5529	5867	5469	6348	6089
	2%	2%	2%	2%	2%
grade 6 events	10815	12317	9863	12073	8663
	5%	5%	3%	4%	3%
grade 7 events	139080	142860	177104	166585	172292
	68%	68%	71%	66%	75%

2.2 Compared Parameters

Parameter	Planned	Actual	Parameter	Planned	Actual
Instrument	ACIS	ACIS	Obspar format version number	7	7
Detector	ACIS-01236	ACIS-01236	Obspar file type	PREDICTED	ACTUAL
Grating	NONE	NONE	Obspar update status	OVERRIDE	OVERRIDE
Data mode	FAINT	FAINT	Number of optional ACIS chips dropped	0	0
Observation mode	POINTING	POINTING	On-chip summing requested	N	N
[deg] Pointing RA	266.397025	266.4150291159858	Subarray requested	NONE	NONE
[deg] Pointing Dec	-28.989771	-29.01217619742244	Alternating exposures requested	N	N
[deg] Pointing Roll	274.643525	274.8609305743819	[s] Primary exposure time	3.1	3.1
[s] Window start time (MET)	239310904.184000	239310904.184000			
[s] Window stop time (MET)	239359924.184000	239359924.184000			
[mm] SIM focus pos	-0.7809083437167272	-0.7809083437167272			
[mm] SIM defocus	0.001439854621705816	0.001439854621705816			
[mm] SIM translation stage pos	-233.5874344608287	-233.5874344608287			
[mm] SIM translation stage offset	-0.005028630603106876	-0.005028630603106876			
[s] Observation start time (MET)	239314565.184000	239314565.184			
Observation start date	2005-08-01T20:15:01	2005-08-01T20:16:05			
[s] Observation end time (MET)	239332710.000000	239332710			
Observation end date	2005-08-02T01:18:30	2005-08-02T01:18:29			
Read mode	TIMED	TIMED			

2.3 Aspect



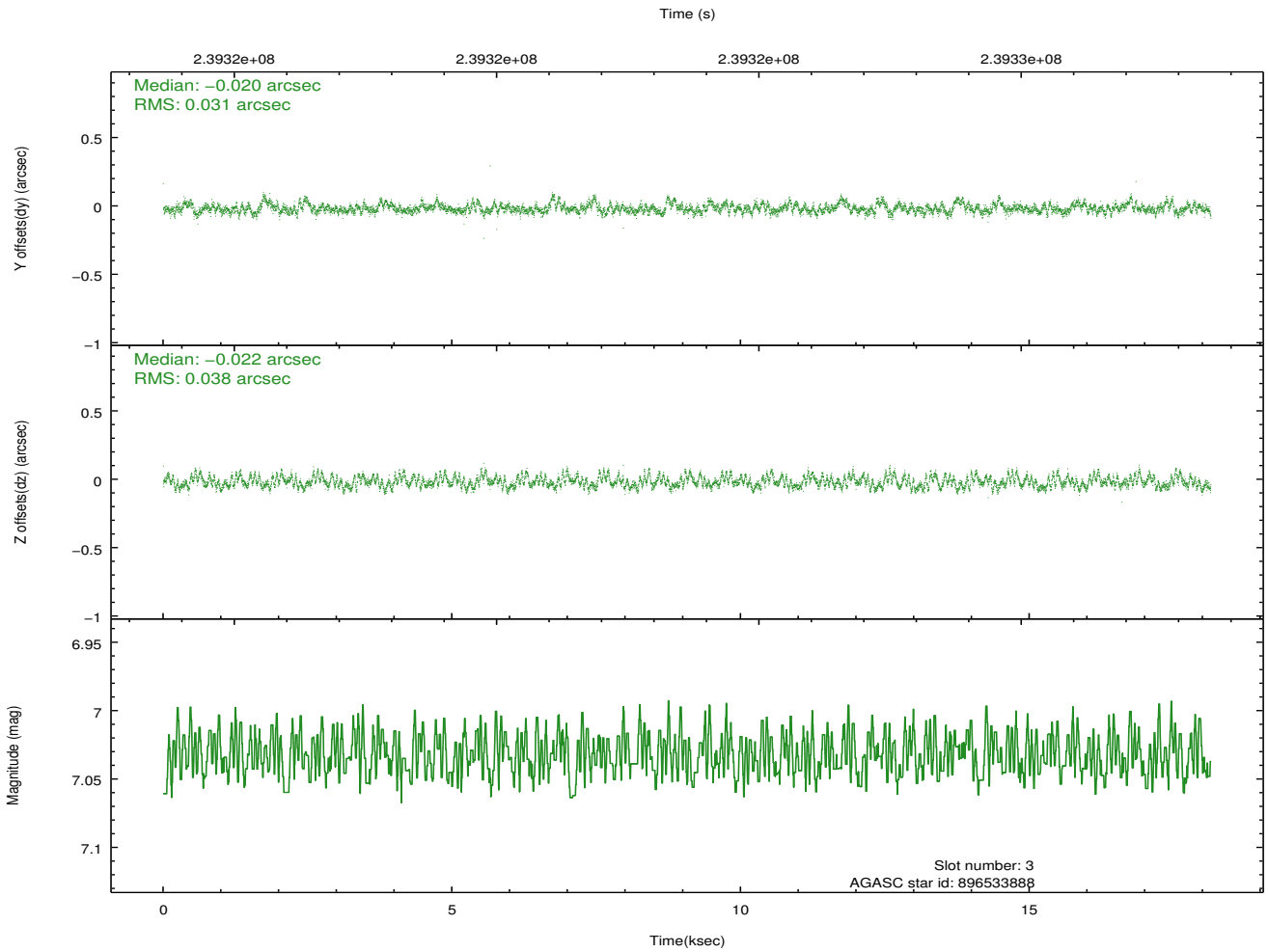
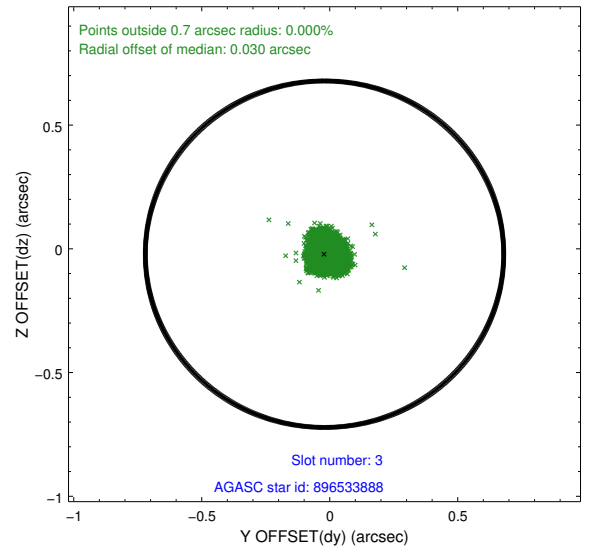
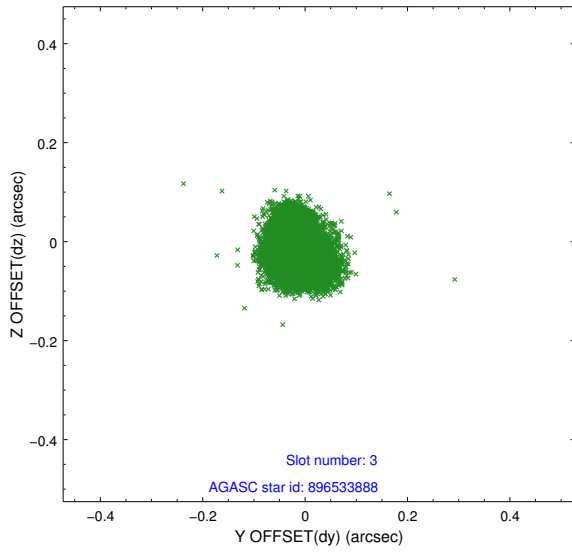
Slot Statistics

slot	status	id	mag	n_pts	med_dy	med_dz	dr1	dr2	ra	dec	mean_y	mean_z
0	FID	ACIS-I-1	7.24	4425	-0.022	0.022	0.008	0.014	0.000000	0.000000	932.17	-833.63
1	FID	ACIS-I-4	7.18	4424	0.151	0.019	0.008	0.014	0.000000	0.000000	2152.53	1066.05
2	FID	ACIS-I-5	7.22	4425	-0.227	0.030	0.008	0.015	0.000000	0.000000	-1815.73	1064.20
3	GUIDE	896533888	7.03	8851	-0.020	-0.022	0.052	0.084	266.666434	-29.392757	1515.56	724.81
4	GUIDE	896534664	8.19	8850	0.200	-0.115	0.050	0.082	266.405570	-28.407461	-2086.65	196.61
5	GUIDE	896541360	7.72	8850	0.041	0.053	0.042	0.067	266.684478	-29.453744	1738.88	763.00
6	GUIDE	896541576	8.19	8846	-0.079	0.040	0.065	0.103	267.051055	-28.762912	-640.98	2123.02
7	GUIDE	896404568	7.86	8849	-0.145	0.041	0.063	0.095	265.687293	-28.431080	-2179.89	-2077.08

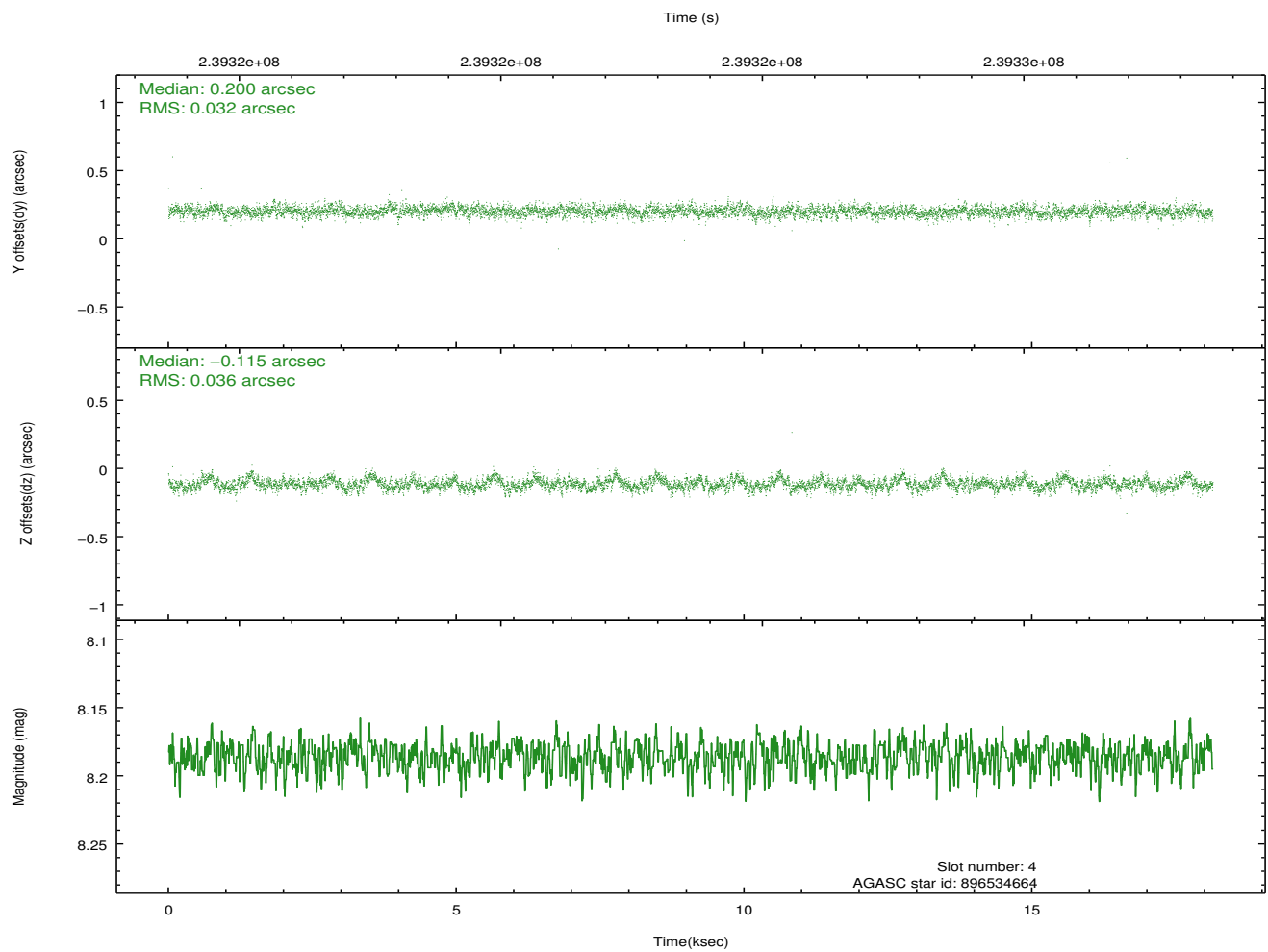
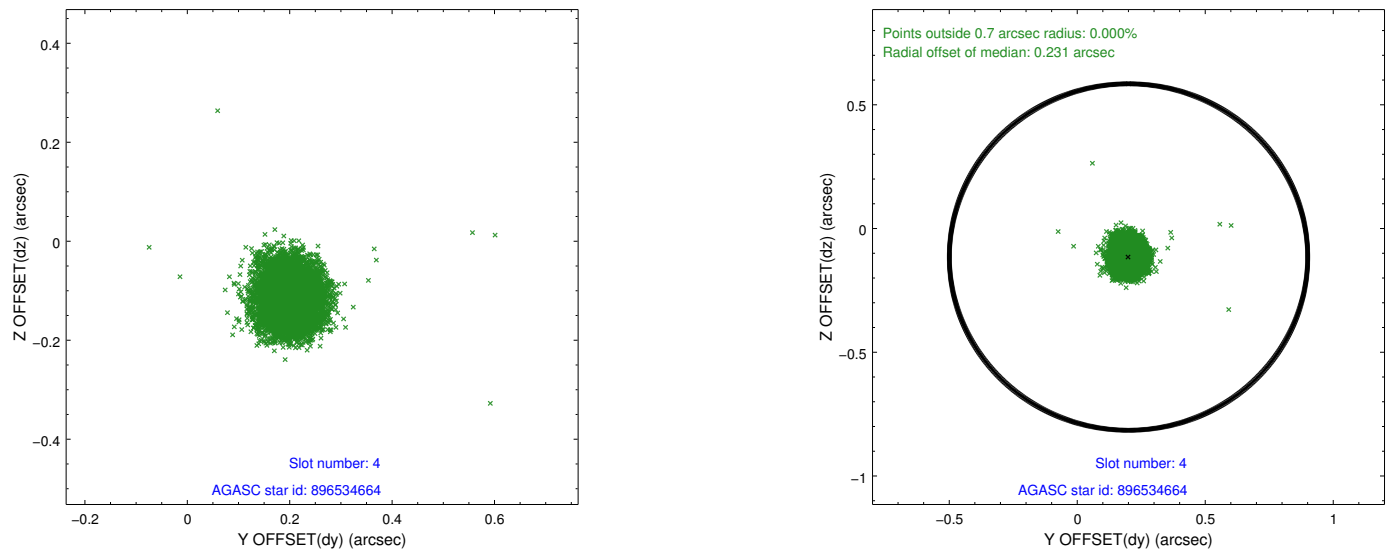
∞

2.4 Star Slots

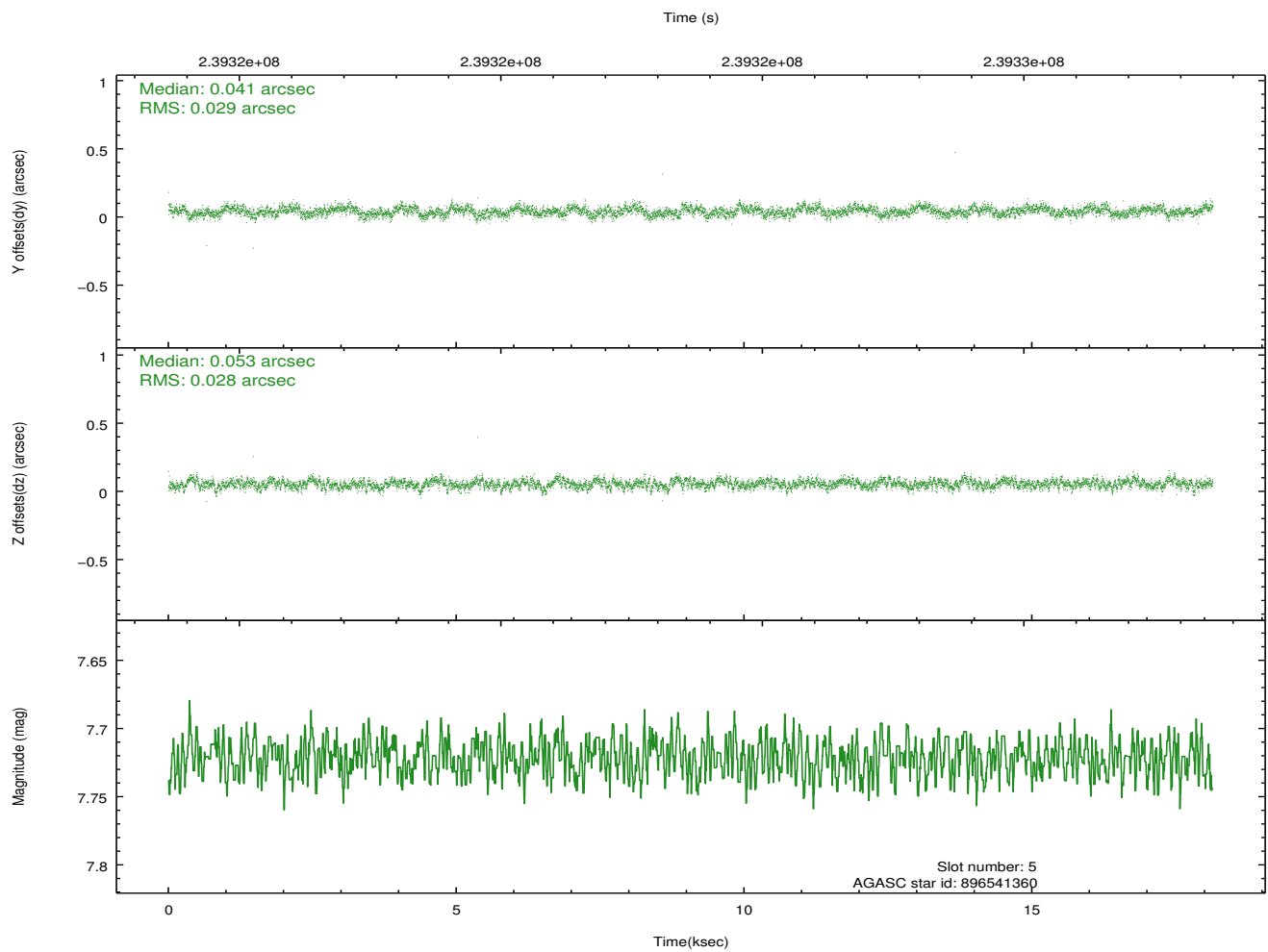
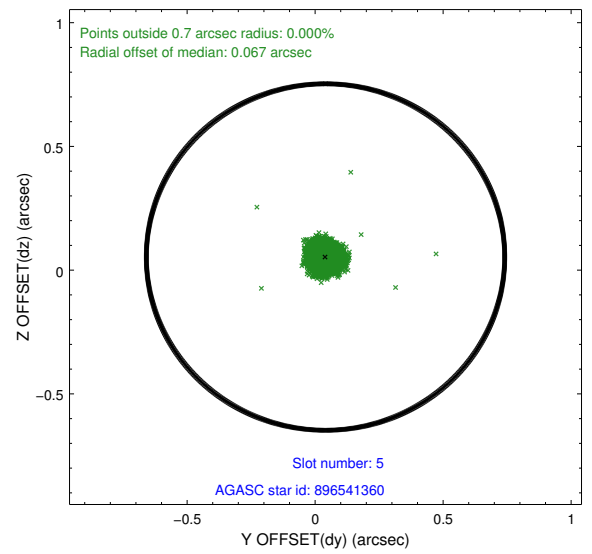
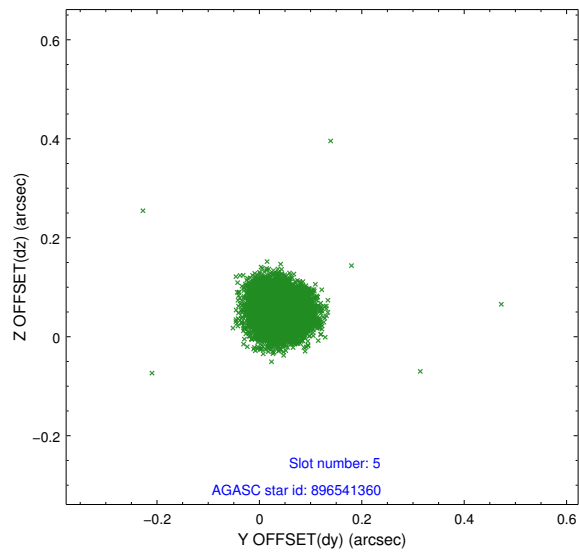
2.4.1 Slot 3



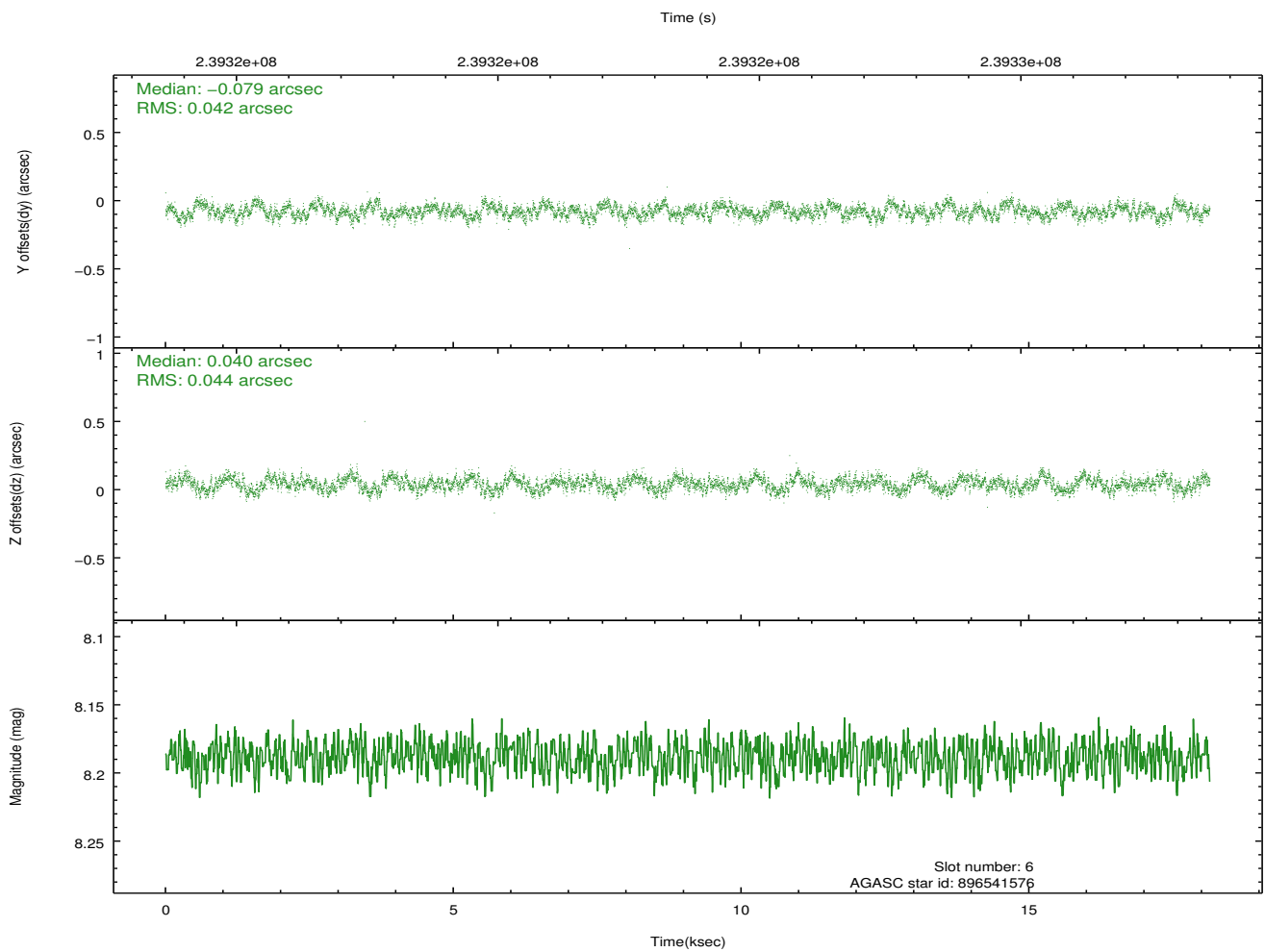
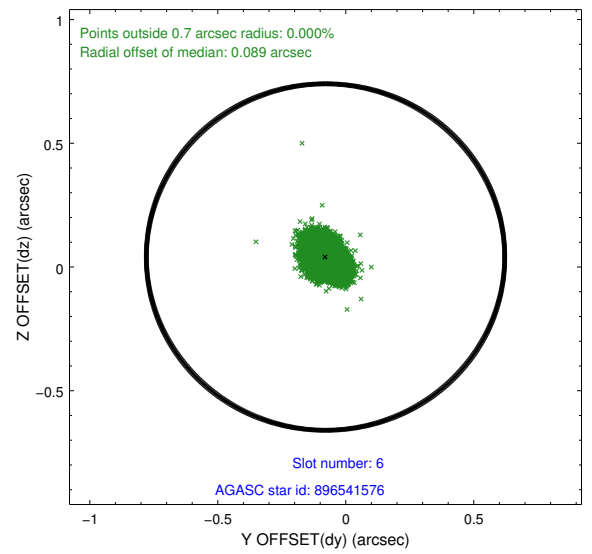
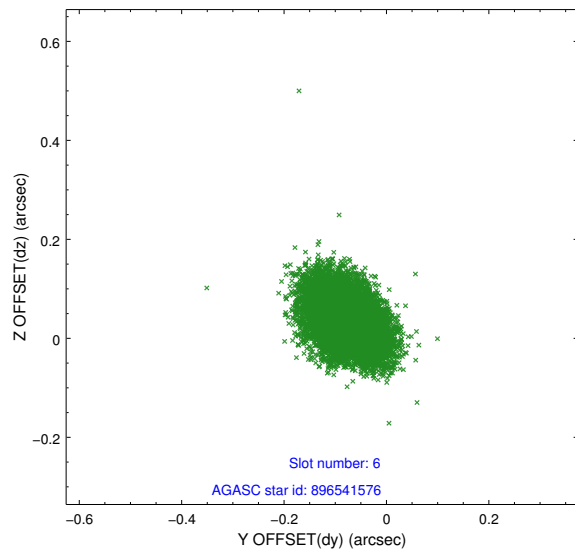
2.4.2 Slot 4



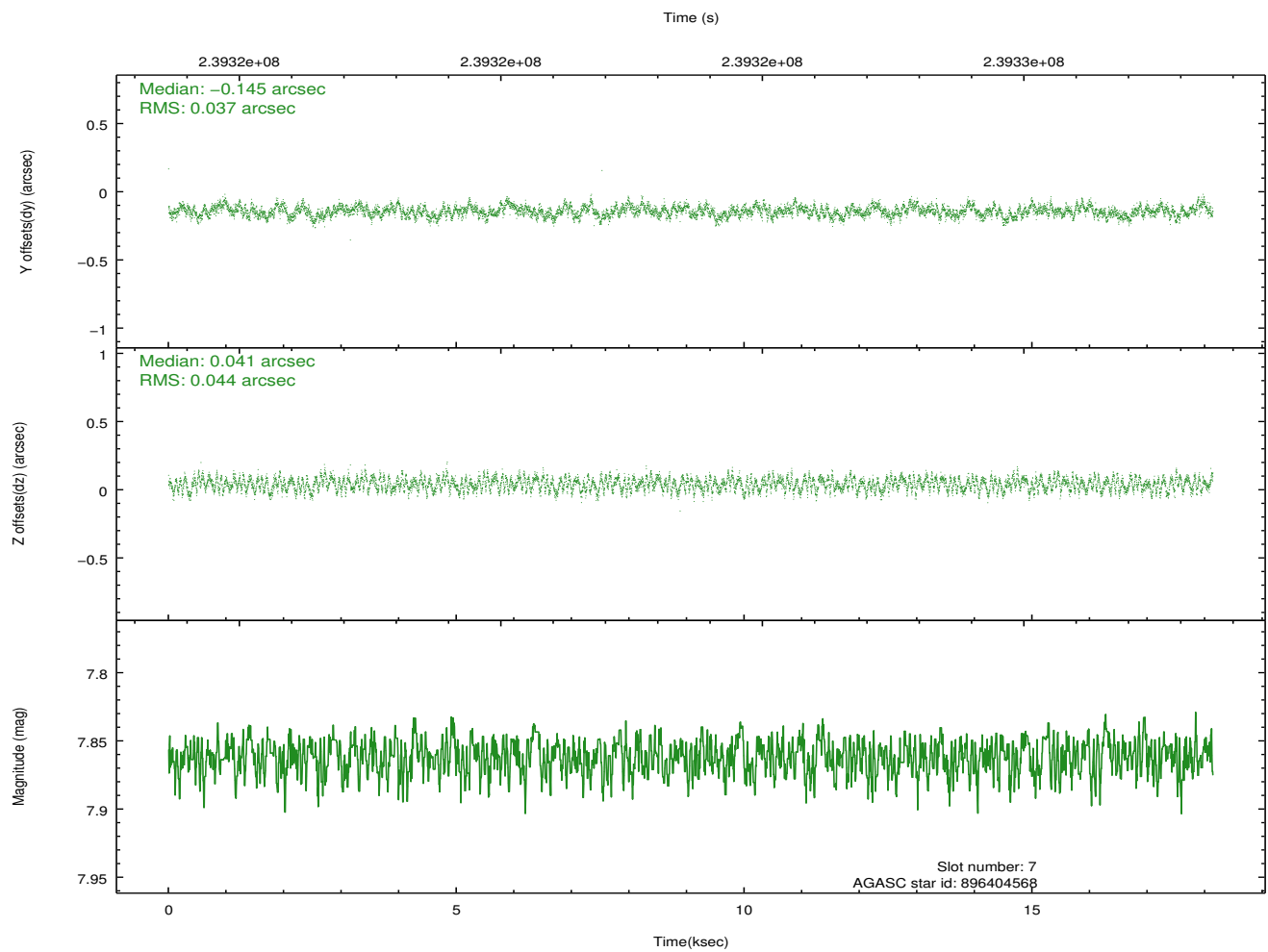
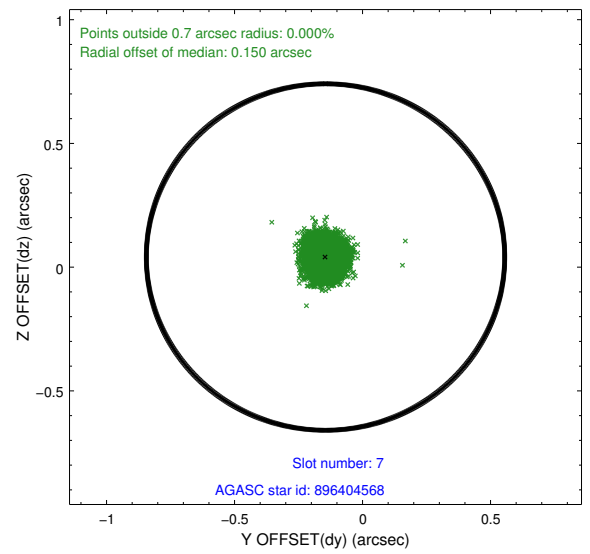
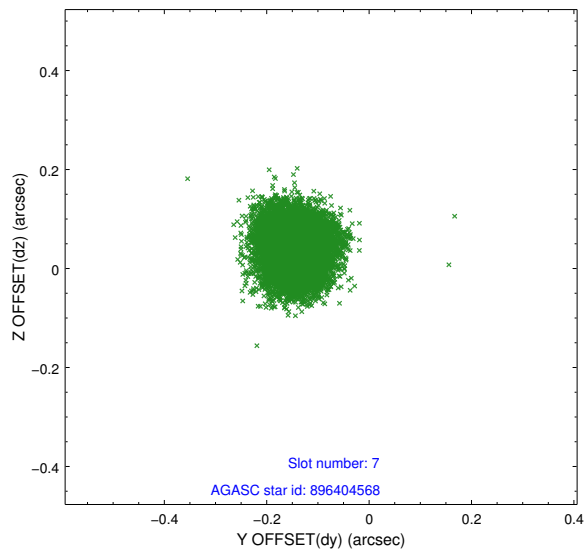
2.4.3 Slot 5



2.4.4 Slot 6

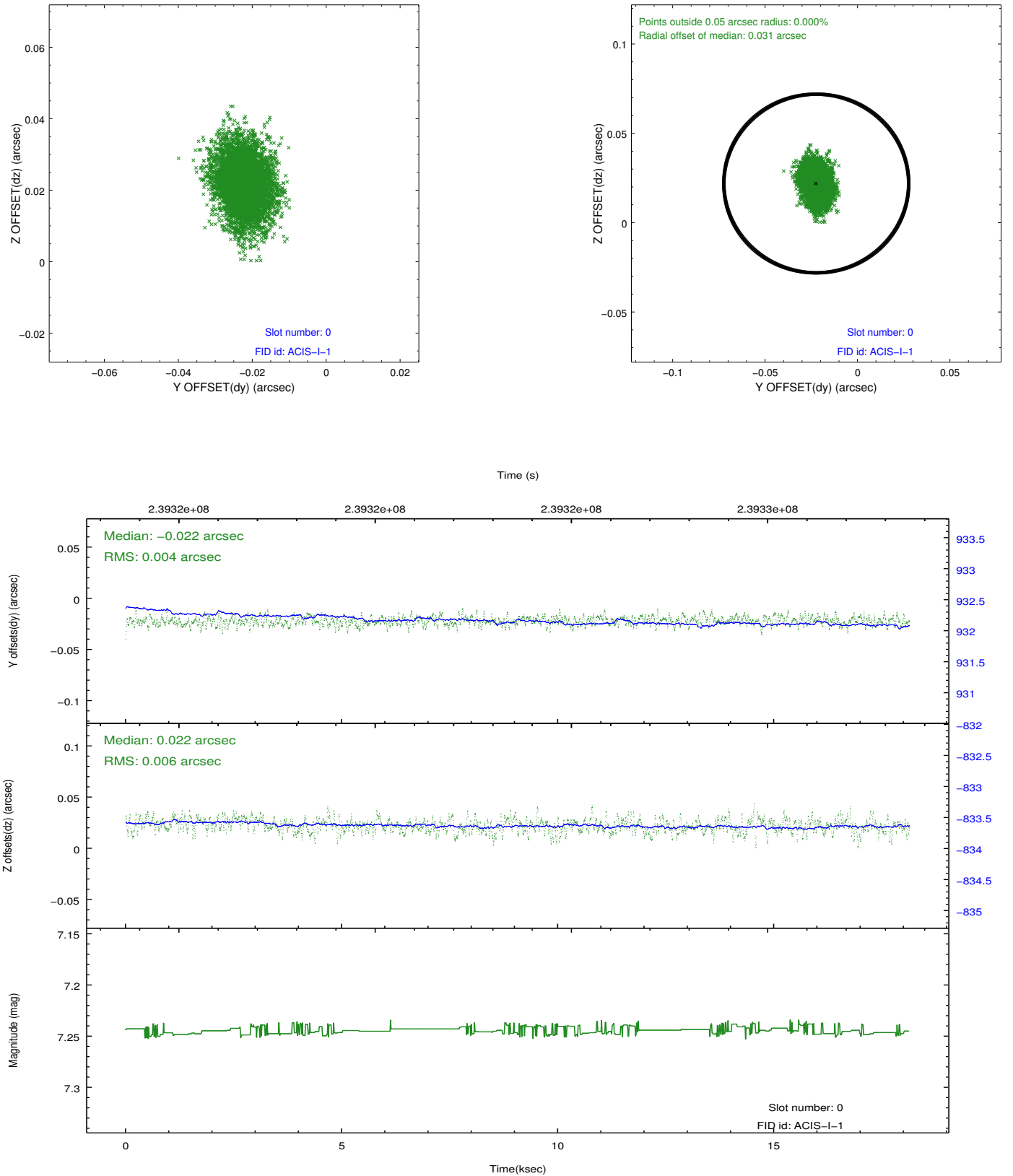


2.4.5 Slot 7

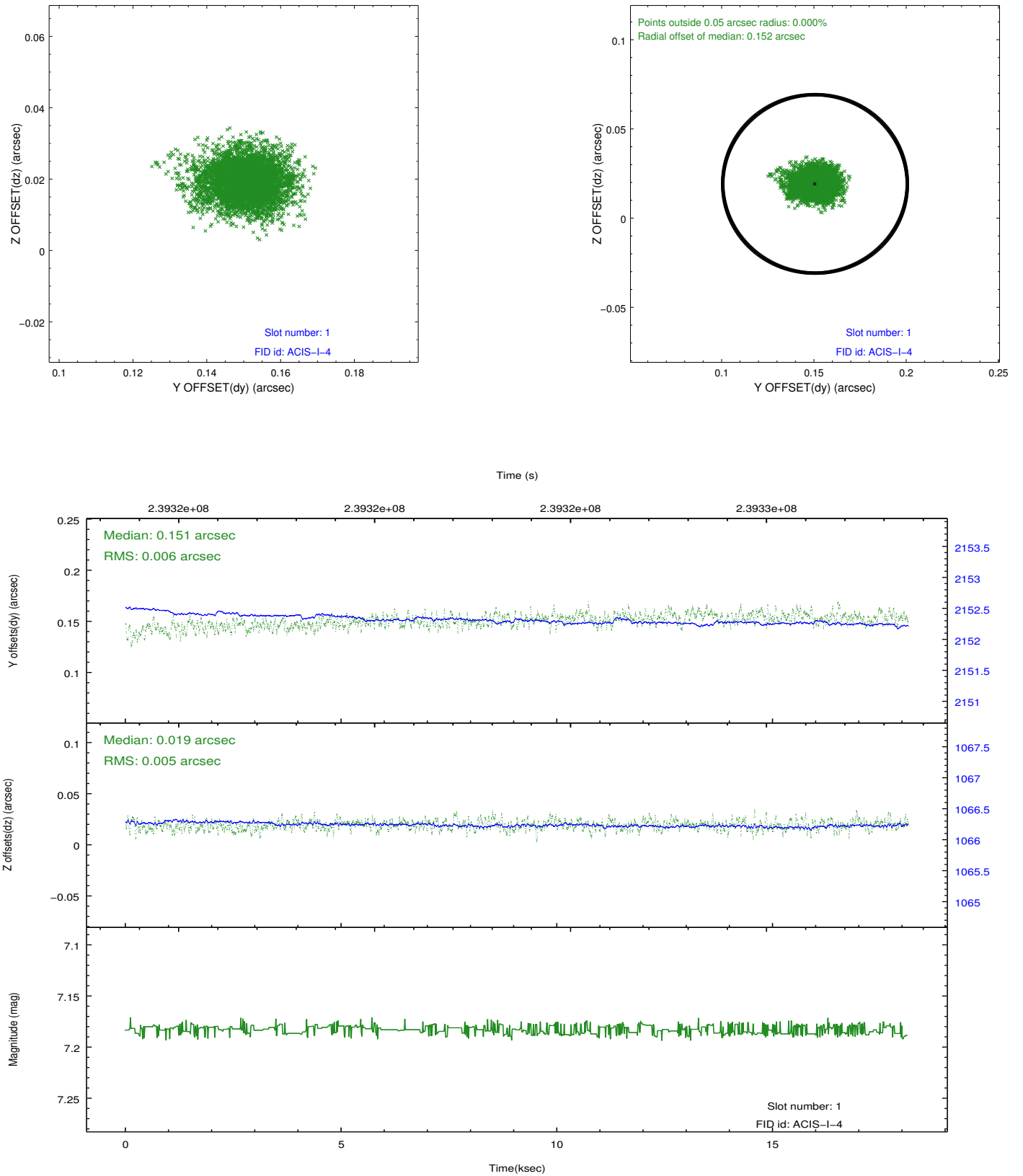


2.5 FID Slots

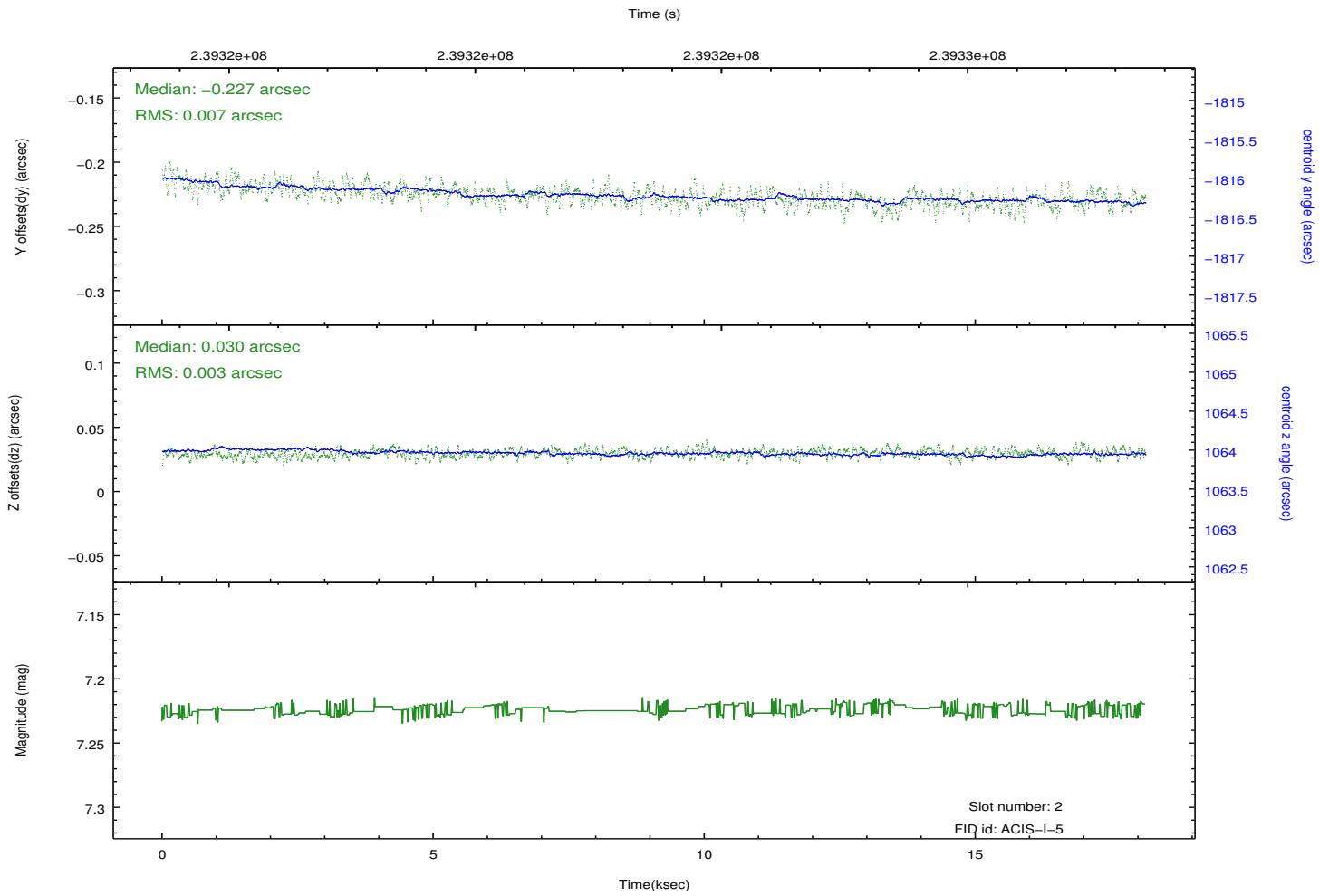
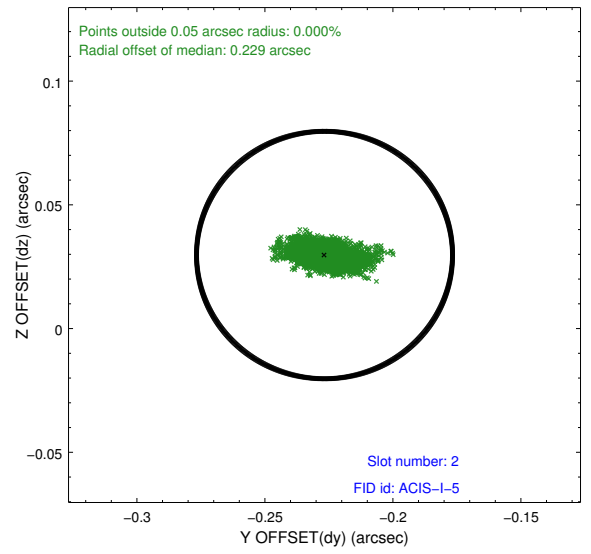
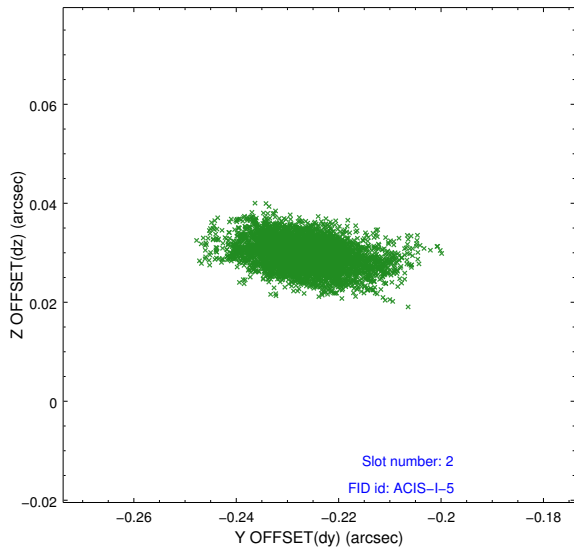
2.5.1 Slot 0



2.5.2 Slot 1



2.5.3 Slot 2



A Summary

A.1 Status

V&V Scientist	Joy Nichols
V&V Date (YYYY-MM-DD)	2013.03.12
V&V Edition	1
V&V Disposition and Status	OK
V&V Charge Time	18.30859

A.2 Comments

Charge time for this ObsId remains at previous value of 18.30859 ks although with the current processing the charge time would have been 18.088 ksec. ===== This observation was interrupted by safing of the science instruments due to high solar radiation environment. The observation was interrupted at 2005:214:01:16. Window constraint met.