

# V&V Reference Report

## L2 ASCDS Version : 8.4.5

Observation 60944 - L2 Version 3  
Chandra X-Ray Center

L2 Processing Date : Oct 18 2012

## Contents

<b>1</b>	<b>Front</b>	<b>2</b>
<b>2</b>	<b>OBI</b>	<b>3</b>
2.1	OBI . . . . .	3
2.1.1	Images . . . . .	3
2.1.2	Bias . . . . .	3
2.1.3	Parameters . . . . .	4
2.1.4	Events . . . . .	4
2.2	Compared Parameters . . . . .	5
2.3	Star Slots . . . . .	6
2.4	FID Slots . . . . .	6
<b>A</b>	<b>Summary</b>	<b>7</b>
A.1	Status . . . . .	7
A.2	Comments . . . . .	7

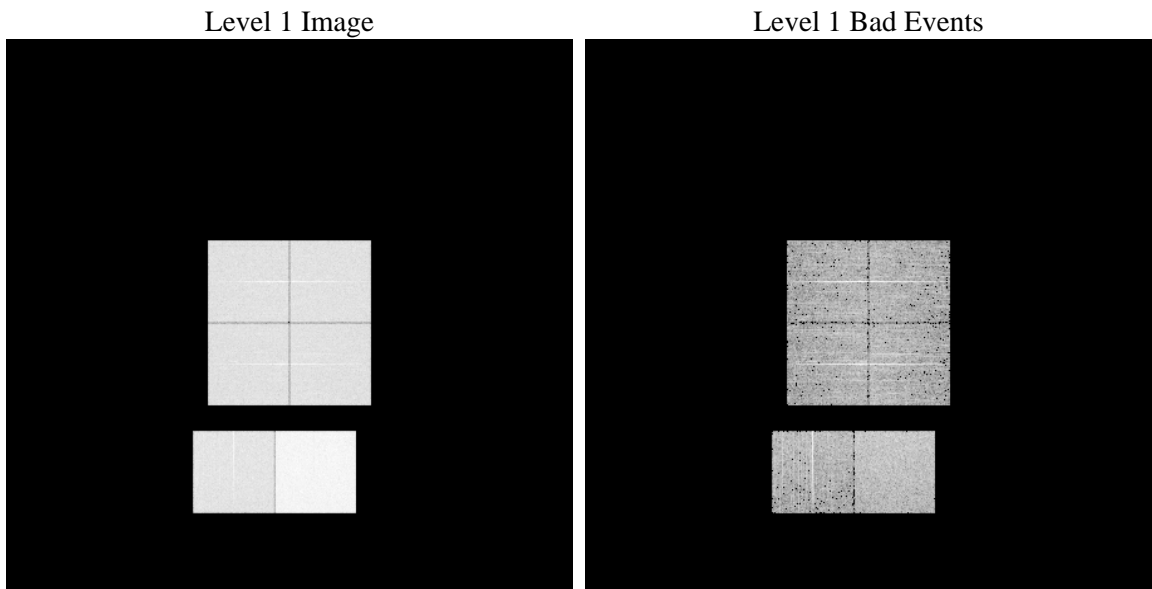
# 1 Front

seq_num	&#160	Sequence number
obs_id	60944	Observation id
title	ACIS-012367 diagnostics	Proposal title
observer	CHANDRA engineering request/realtime commanding	Principal investig
object	&#160	Source name
dtycycle	0	&#160
cycle	P	events from which exps? Prim/Second/Both
ra_targ	0.0	Observer's specified target RA [deg]
dec_targ	0.0	Observer's specified target Dec [deg]
ra_nom	101.28459985891	Nominal RA [deg]
dec_nom	23.724861812272	Nominal Dec [deg]
roll_nom	86.684822074005	Nominal Roll [deg]
revision	3	Processing version of data
ontime	7791.9999709725	Sum of GTIs [s]
livetime	7693.332975561	Livetime [s]
ontime0	3977.3615263402	Sum of GTIs [s]
ontime1	4034.3387317657	Sum of GTIs [s]
ontime2	3852.8832044601	Sum of GTIs [s]
ontime3	3870.4086001515	Sum of GTIs [s]
ontime6	4235.3632505536	Sum of GTIs [s]
ontime7	7791.9999709725	Sum of GTIs [s]
l2events	1198204	Number of level 2 events

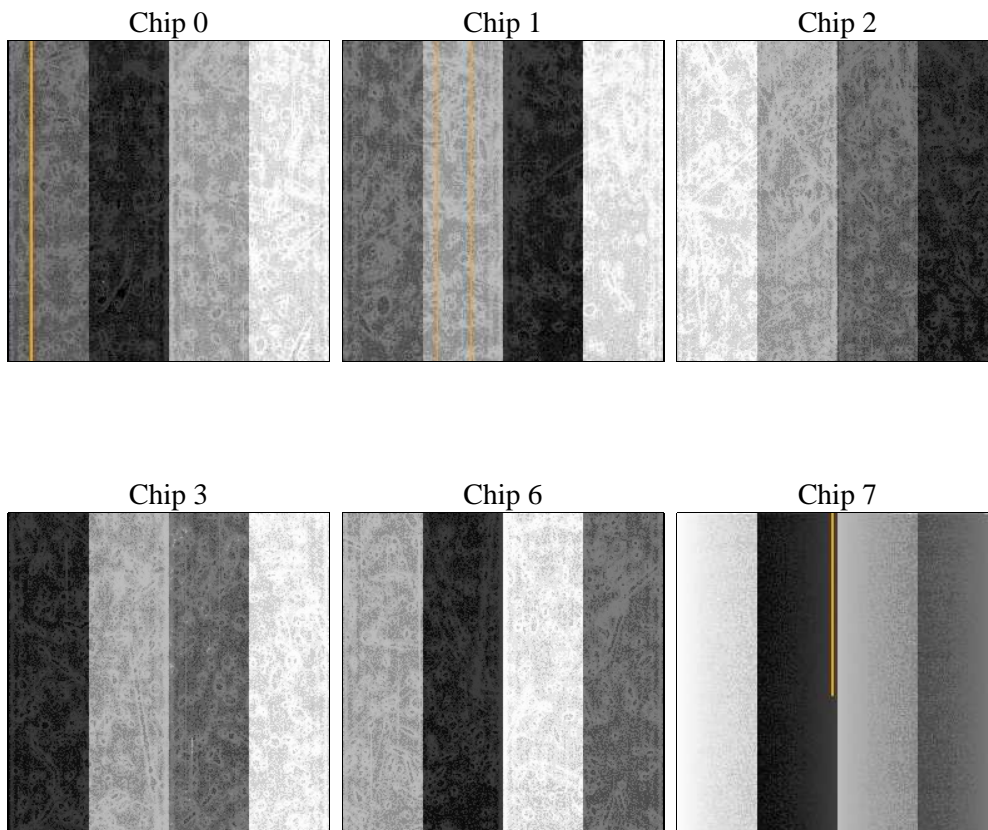
## 2 OBI

### 2.1 OBI

#### 2.1.1 Images



#### 2.1.2 Bias



### 2.1.3 Parameters

obi_num	1	Obi number	sched_exp_time	0.0	[s] Scheduled observation exposure time
ascdsver	8.4.5	Processing system revision	ontime	7791.9999709725	Sum of GTIs [s]
caldbver	4.5.2	&#160	ontime0	3977.3615263402	Sum of GTIs [s]
date	2012-10-18T05:23:39	Date and time of file creation	ontime1	4034.3387317657	Sum of GTIs [s]
revision	3	Processing version of data	ontime2	3852.8832044601	Sum of GTIs [s]
			ontime3	3870.4086001515	Sum of GTIs [s]
			ontime6	4235.3632505536	Sum of GTIs [s]
			ontime7	7791.9999709725	Sum of GTIs [s]
			l1events	1429931	Number of level 1 events

### 2.1.4 Events

	ccd 0	ccd 1	ccd 2	ccd 3	ccd 6	ccd 7		ccd 0	ccd 1	ccd 2	ccd 3	ccd 6	ccd 7
level 1 events	201007	203385	198522	200646	224736	401635	grade 0 events	96471	97760	96405	97336	106757	91573
rejected events	26410	26337	26953	28116	29572	40496		47%	48%	48%	48%	47%	22%
rejected %	13%	12%	13%	14%	13%	10%	grade 1 events	479	457	555	551	509	225
								0%	0%	0%	0%	0%	0%
							grade 2 events	30279	31561	29046	29434	33599	80888
								15%	15%	14%	14%	14%	20%
							grade 3 events	11394	11277	11145	11101	12146	36617
								5%	5%	5%	5%	5%	9%
							grade 4 events	11305	11215	11067	11305	12174	36451
								5%	5%	5%	5%	5%	9%
							grade 5 events	1880	1858	1789	1909	2220	7753
								0%	0%	0%	0%	0%	1%
							grade 6 events	25280	25235	23906	23517	30488	115766
								12%	12%	12%	11%	13%	28%
							grade 7 events	23919	24022	24609	25493	26843	32362
								11%	11%	12%	12%	11%	8%

## 2.2 Compared Parameters

Parameter	Planned	Actual	Parameter	Planned	Actual
Instrument	ACIS	ACIS	Obspar format version number	7	7
Detector	ACIS-012367	ACIS-012367	Obspar file type	PREDICTED	ACTUAL
Grating	NONE	NONE	Obspar update status	NONE	UPDATED
Data mode	FAINT	FAINT	On-chip summing requested	N	N
Observation mode	SECONDARY	SECONDARY	Subarray requested	NONE	NONE
[deg] Pointing RA	0	101.2845998589144	Alternating exposures requested	N	N
[deg] Pointing Dec	0	23.72486181227165	[s] Primary exposure time	0.000000	3.2
[deg] Pointing Roll	0.0	86.68482207400474			
[mm] SIM focus pos	-0.782348	-0.6828225247311905			
[mm] SIM defocus	0	0.8505141146731063			
[mm] SIM translation stage pos	-233.592463	250.466033080201			
[mm] SIM translation stage offset	0	-0.01005468664627074			
[s] Observation start time (MET)	155122781.531646	155122780.50694			
Observation start date	2002-12-01T09:39:42	2002-12-01T09:39:40			
[s] Observation end time (MET)	155155382.683004	155155381.6583			
Observation end date	2002-12-01T18:43:03	2002-12-01T18:43:01			
Read mode	TIMED	TIMED			

**2.3 Star Slots**

**2.4 FID Slots**

# A Summary

## A.1 Status

V&V Scientist	Jen Lauer
V&V Date (YYYY-MM-DD)	2012.10.28
V&V Edition	1
V&V Disposition and Status	OK
V&V Charge Time	7.7919999709725

## A.2 Comments