

V&V Reference Report

L2 ASCDS Version : 7.6.9

Observation 61004 - L2 Version 001
Chandra X-Ray Center

L2 Processing Date : Oct 5 2006

Contents

1	Front	2
2	OBI	3
2.1	OBI	3
2.1.1	Images	3
2.1.2	Bias	3
2.1.3	Parameters	4
2.1.4	Events	4
2.2	Compared Parameters	5
2.3	Aspect	6
2.4	Star Slots	8
2.5	FID Slots	8
A	Summary	9
A.1	Status	9
A.2	Comments	9

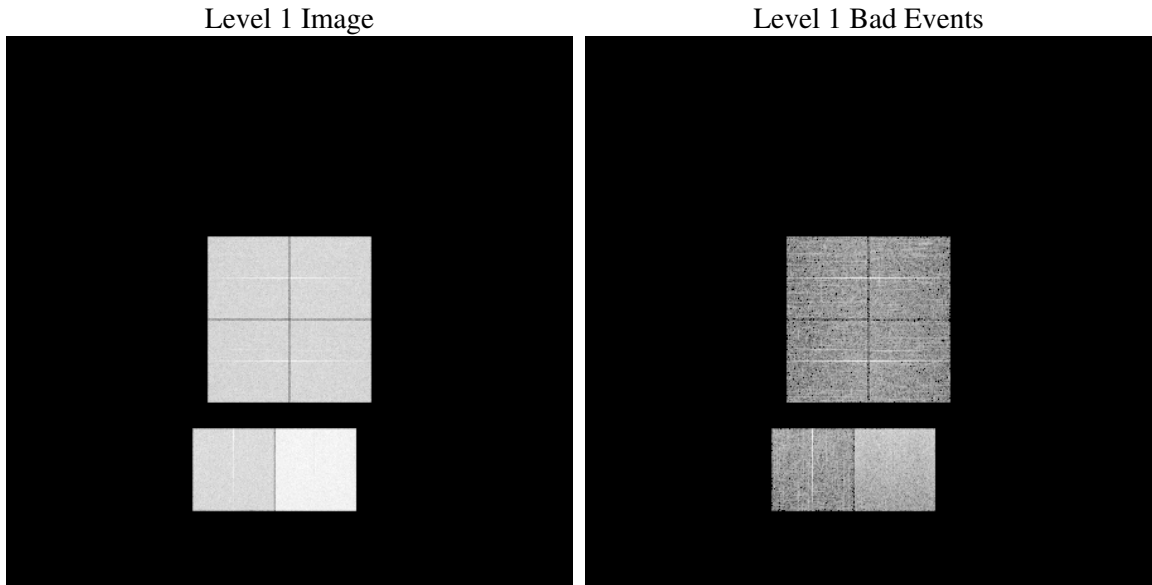
1 Front

seq_num	
obs_id	61004
title	ACIS-012367 diagnostics
observer	CHANDRA engineering request/realtime commanding
object	
dtcycle	0
cycle	P
ra_targ	0.0
dec_targ	0.0
ra_nom	124.99010466779
dec_nom	25.027175081436
roll_nom	75.403022402855
revision	2
ontime	8403.1999686956
livetime	8296.7935908925
ontime0	4027.3805339336
ontime1	4127.8928869367
ontime2	3884.8582995534
ontime3	3968.9603219926
ontime6	4264.4844110012
ontime7	8403.1999686956
l2events	1277360

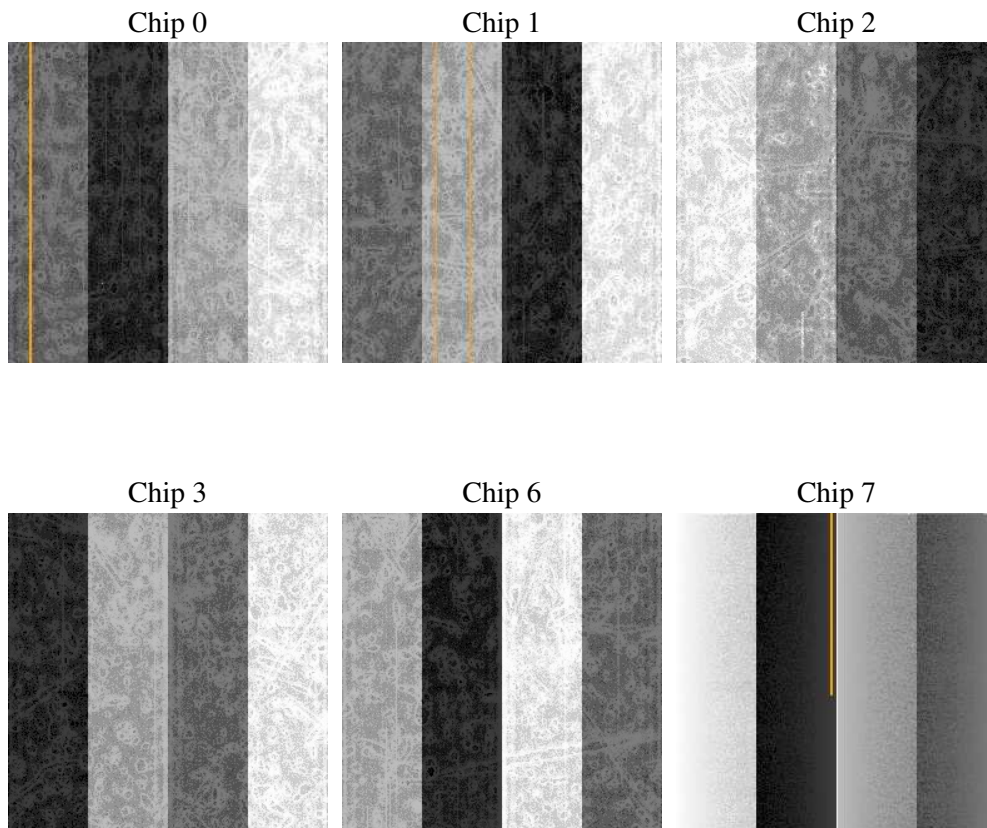
2 OBI

2.1 OBI

2.1.1 Images



2.1.2 Bias



2.1.3 Parameters

obi_num	0
ascdsver	7.6.9
caldbver	3.2.3
date	2006-10-06T02:03:01
revision	2

sched_exp_time	0.0
ontime	8465.4879806936
ontime0	4054.5292196274
ontime1	4155.0005326271
ontime2	3908.6838154197
ontime3	3999.4321077764
ontime6	4294.362770468
ontime7	8465.4879806936
l1events	1553073

2.1.4 Events

	ccd 0	ccd 1	ccd 2	ccd 3	ccd 6	ccd 7
level 1 events	214165	219313	210087	214891	239190	455427
rejected events	30359	30486	29790	30825	33325	63886
rejected %	14%	13%	14%	14%	13%	14%

	ccd 0	ccd 1	ccd 2	ccd 3	ccd 6	ccd 7
grade 0 events	101928	104388	101722	104122	112903	71762
	47%	47%	48%	48%	47%	15%
grade 1 events	589	578	606	674	566	172
	0%	0%	0%	0%	0%	0%
grade 2 events	32246	33447	30570	31467	35472	118593
	15%	15%	14%	14%	14%	26%
grade 3 events	11958	12115	11794	12052	12939	29429
	5%	5%	5%	5%	5%	6%
grade 4 events	12067	12035	11842	12036	12848	29121
	5%	5%	5%	5%	5%	6%
grade 5 events	1950	2080	1841	1926	2284	7975
	0%	0%	0%	0%	0%	1%
grade 6 events	26812	28078	25348	25710	33063	145517
	12%	12%	12%	11%	13%	31%
grade 7 events	26615	26592	26364	26904	29115	52858
	12%	12%	12%	12%	12%	11%

2.2 Compared Parameters

Parameter	Planned	Actual	Parameter	Planned	Actual
Instrument	ACIS	ACIS	Obspar format version number	6	6
Detector	ACIS-012367	ACIS-012367	Obspar file type	PREDICTED	ACTUAL
Grating	NONE	NONE	Obspar update status	NONE	UPDATED
Data mode	FAINT	FAINT	On-chip summing requested	N	N
Observation mode	SECONDARY	SECONDARY	Subarray requested	NONE	NONE
Pointing RA	0	124.9901046677934	Alternating exposures requested	N	N
Pointing Dec	0	25.02717508143649	Primary exposure time	3.2	3.2
Pointing Roll	0.0	75.40302240285502			
SIM focus pos (mm)	-0.782348	-0.6828225247311905			
SIM defocus (mm)	0	0.8505141146731063			
SIM translation stage pos (mm)	-233.592463	250.466033080201			
SIM translation stage offset (mm)	0	-0.01005468664627074			
Observation start time	150584901.342995	150584900.31828			
Observation start date	2002-10-09T21:08:21	2002-10-09T21:08:20			
Observation end time	150607744.493941	150607743.46923			
Observation end date	2002-10-10T03:29:04	2002-10-10T03:29:03			
Read mode	TIMED	TIMED			

2.3 Aspect

2.4 Star Slots

2.5 FID Slots

A Summary

A.1 Status

V&V Scientist	Jen Lauer
V&V Date (YYYY-MM-DD)	2006.10.06
V&V Edition	1
V&V Disposition and Status	OK
V&V Charge Time	8.40319996

A.2 Comments