

# V&V Reference Report

## L2 ASCDS Version : 8.5.1

Observation 6184 - L2 Version 3  
Chandra X-Ray Center

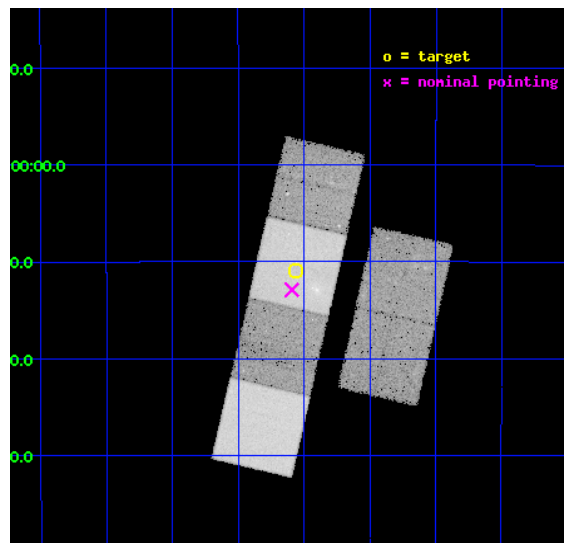
L2 Processing Date : Dec 15 2012

## Contents

<b>1</b>	<b>Front</b>	<b>2</b>
<b>2</b>	<b>OBI</b>	<b>3</b>
2.1	OBI . . . . .	3
2.1.1	Images . . . . .	3
2.1.2	Bias . . . . .	3
2.1.3	Parameters . . . . .	4
2.1.4	Events . . . . .	4
2.2	Compared Parameters . . . . .	5
2.3	Aspect . . . . .	6
2.4	Star Slots . . . . .	9
2.4.1	Slot 3 . . . . .	9
2.4.2	Slot 4 . . . . .	10
2.4.3	Slot 5 . . . . .	11
2.4.4	Slot 6 . . . . .	12
2.4.5	Slot 7 . . . . .	13
2.5	FID Slots . . . . .	14
2.5.1	Slot 0 . . . . .	14
2.5.2	Slot 1 . . . . .	15
2.5.3	Slot 2 . . . . .	16
<b>A</b>	<b>Summary</b>	<b>17</b>
A.1	Status . . . . .	17
A.2	Comments . . . . .	17

# 1 Front

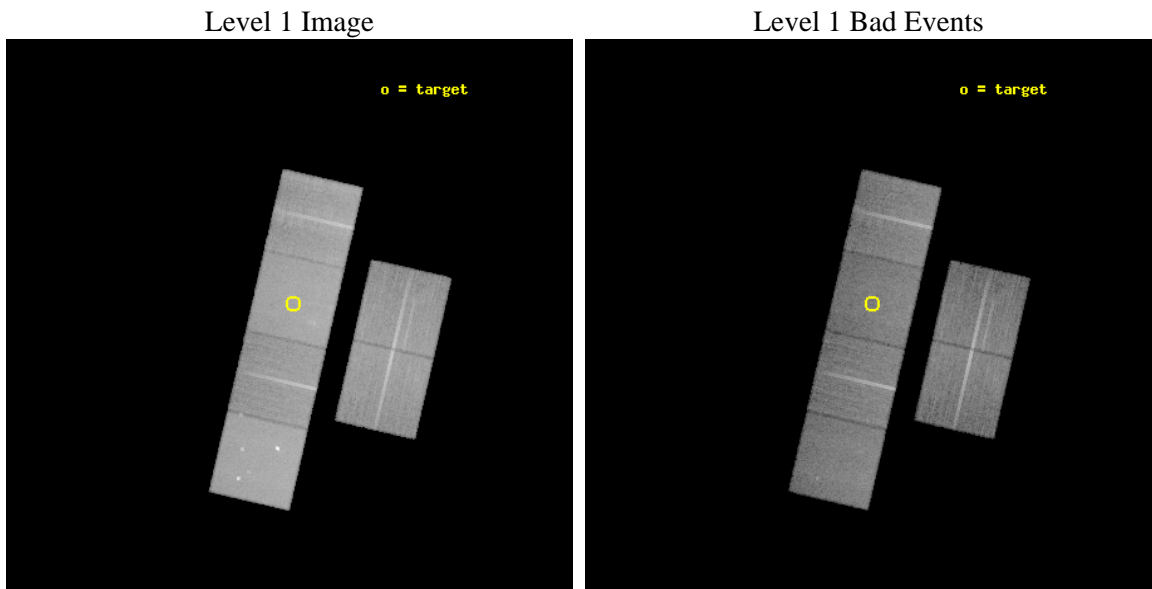
seq_num	600345	Sequence number
obs_id	6184	Observation id
title	An X-ray Search for Extragalactic Supernova Remnants in Three Nearby Galaxies: NGC 45, NGC 247 and NGC 300	Proposal title
observer	Dr. Thomas Pannuti	Principal investigator
object	NGC 45	Source name
dtcycle	0	&#160
cycle	P	events from which exps? Prim/Second/Both
ra_targ	3.516667	Observer's specified target RA [deg]
dec_targ	-23.181667	Observer's specified target Dec [deg]
ra_nom	3.5231248634685	Nominal RA [deg]
dec_nom	-23.215210868735	Nominal Dec [deg]
roll_nom	283.00917267346	Nominal Roll [deg]
revision	3	Processing version of data
ontime	24956.799907029	Sum of GTIs [s]
livetime	24640.781879425	Livetime [s]
ontime2	24956.799907029	Sum of GTIs [s]
ontime3	24956.799907029	Sum of GTIs [s]
ontime5	24956.799907029	Sum of GTIs [s]
ontime6	24956.799907029	Sum of GTIs [s]
ontime7	24956.799907029	Sum of GTIs [s]
ontime8	24956.799907029	Sum of GTIs [s]
l2events	308373	Number of level 2 events



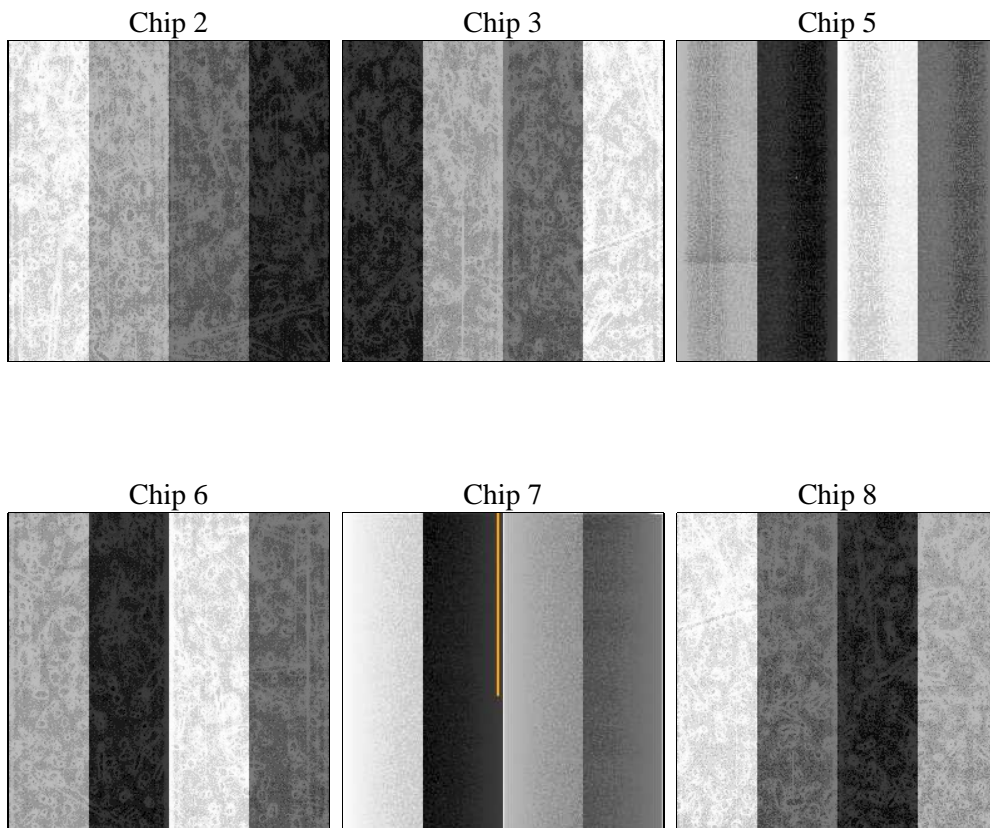
## 2 OBI

### 2.1 OBI

#### 2.1.1 Images



#### 2.1.2 Bias



### 2.1.3 Parameters

obi_num	0	Obi number	sched_exp_time	25000.000000	[s] Scheduled observation exposure time
ascdsver	8.5.1	Processing system revision	ontime	24956.799907029	Sum of GTIs [s]
caldbver	4.5.5	&#160	ontime2	24956.799907029	Sum of GTIs [s]
date	2012-12-16T00:05:38	Date and time of file creation	ontime3	24956.799907029	Sum of GTIs [s]
revision	3	Processing version of data	ontime5	24956.799907029	Sum of GTIs [s]
			ontime6	24956.799907029	Sum of GTIs [s]
			ontime7	24956.799907029	Sum of GTIs [s]
			ontime8	24956.799907029	Sum of GTIs [s]
			l1events	1308498	Number of level 1 events

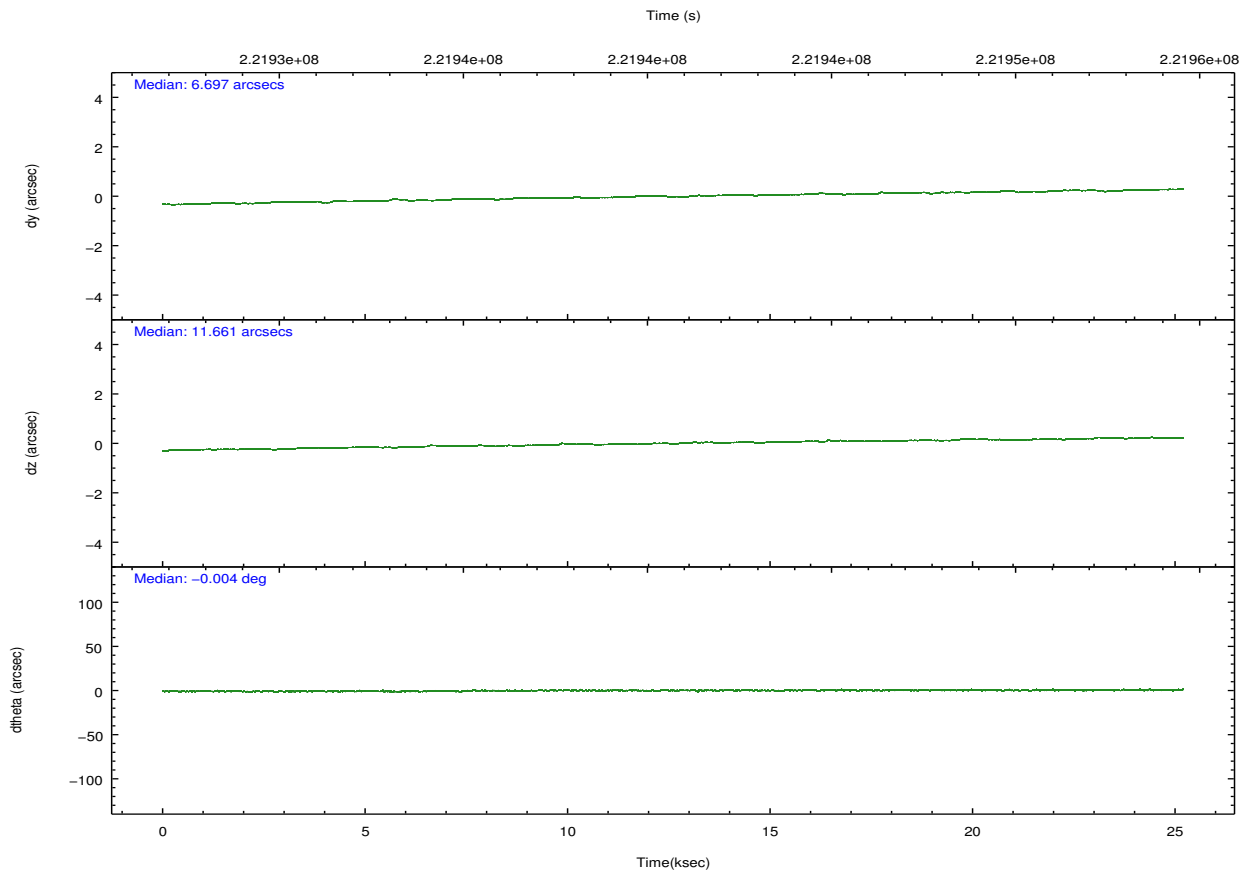
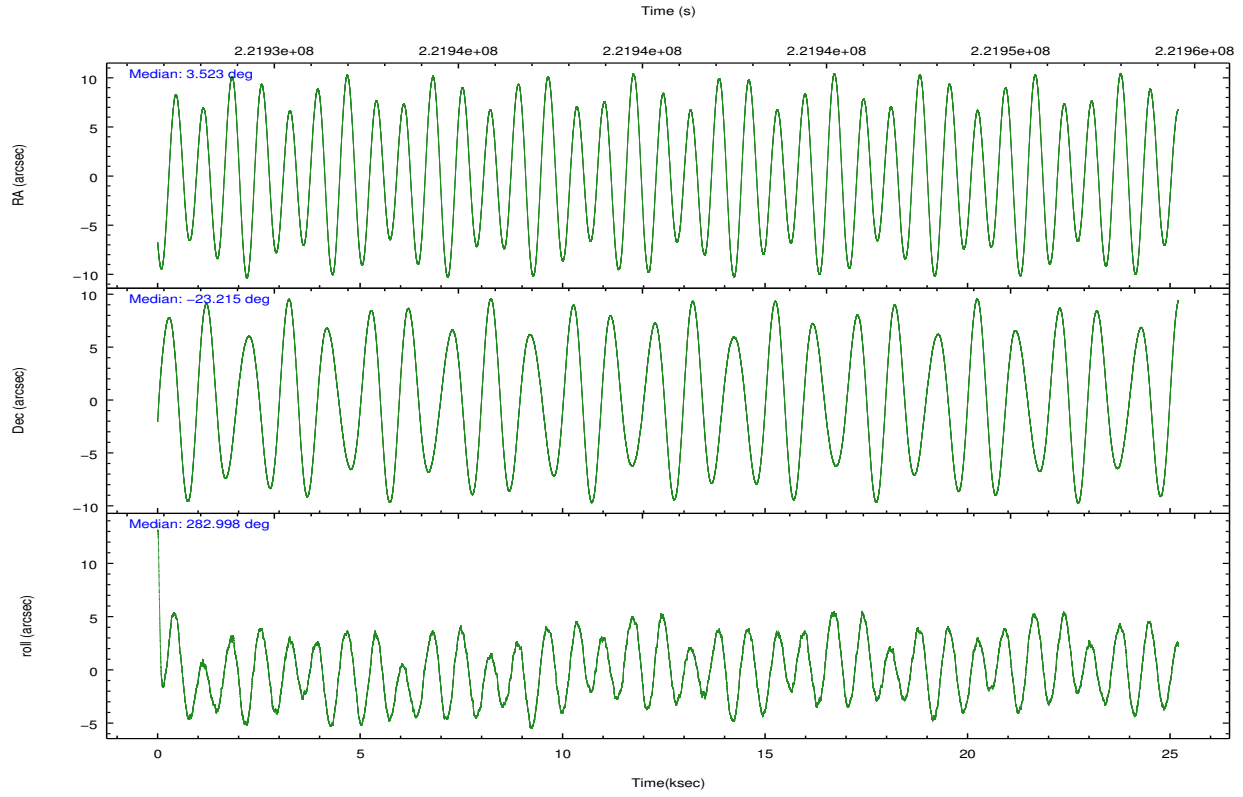
### 2.1.4 Events

	ccd 2	ccd 3	ccd 5	ccd 6	ccd 7	ccd 8		ccd 2	ccd 3	ccd 5	ccd 6	ccd 7	ccd 8
level 1 events	182614	175092	281887	185024	252459	231422	grade 0 events	10121	10155	18793	9279	10252	16889
rejected events	160166	152740	147927	162267	144177	180254		5%	5%	6%	5%	4%	7%
rejected %	87%	87%	52%	87%	57%	77%	grade 1 events	120	105	619	92	256	155
								0%	0%	0%	0%	0%	0%
							grade 2 events	4524	4166	37924	4867	21650	11134
								2%	2%	13%	2%	8%	4%
							grade 3 events	2091	2075	4973	2147	9458	5273
								1%	1%	1%	1%	3%	2%
							grade 4 events	2081	2137	4823	2078	9447	4940
								1%	1%	1%	1%	3%	2%
							grade 5 events	7150	8120	20201	8501	23535	10841
								3%	4%	7%	4%	9%	4%
							grade 6 events	3634	3820	67456	4388	57490	12934
								1%	2%	23%	2%	22%	5%
							grade 7 events	152893	144514	127098	153672	120371	169256
								83%	82%	45%	83%	47%	73%

## 2.2 Compared Parameters

Parameter	Planned	Actual	Parameter	Planned	Actual
Instrument	ACIS	ACIS	Obspar format version number	7	7
Detector	ACIS-235678	ACIS-235678	Obspar file type	PREDICTED	ACTUAL
Grating	NONE	NONE	Obspar update status	NONE	UPDATED
Data mode	VFAINT	VFAINT	Number of optional ACIS chips dropped	0	0
Observation mode	POINTING	POINTING	On-chip summing requested	N	N
[deg] Pointing RA	3.502628	3.523124863468513	Subarray requested	NONE	NONE
[deg] Pointing Dec	-23.195544	-23.21521086873479	Alternating exposures requested	N	N
[deg] Pointing Roll	282.844470	283.0091726734648	[s] Primary exposure time	0.000000	3.2
[mm] SIM focus pos	-0.684267	-0.6828225247311905			
[mm] SIM defocus	0	0.001444936568705701			
[mm] SIM translation stage pos	-190.132523	-190.1425803651734			
[mm] SIM translation stage offset	0	0.01005778216563158			
[s] Observation start time (MET)	221928304.184000	221927331.11969			
Observation start date	2005-01-12T14:44:00	2005-01-12T14:28:51			
[s] Observation end time (MET)	221953304.184000	221954348.07091			
Observation end date	2005-01-12T21:40:40	2005-01-12T21:59:08			
Read mode	TIMED	TIMED			

## 2.3 Aspect



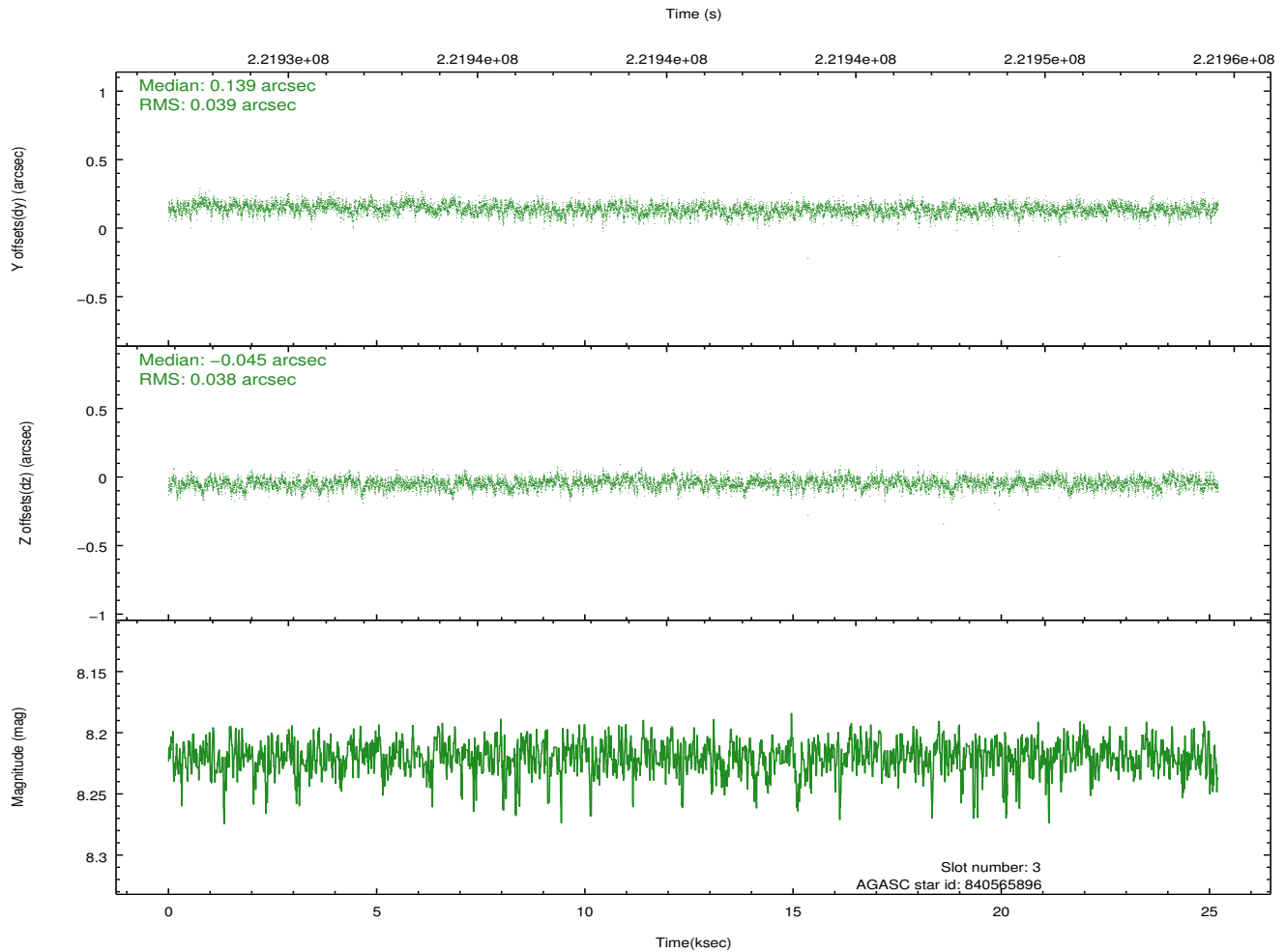
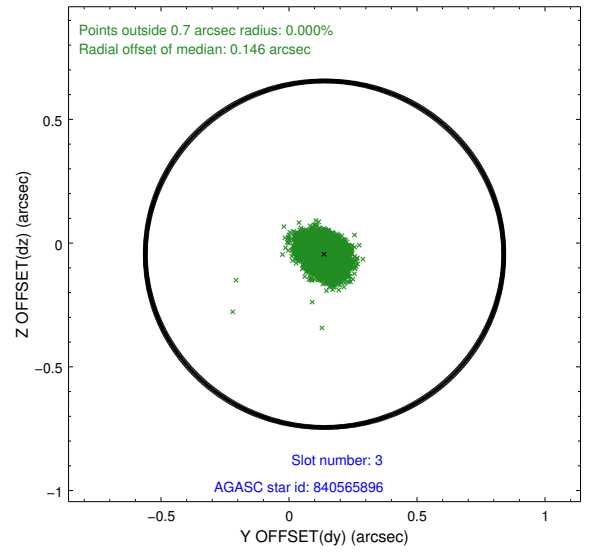
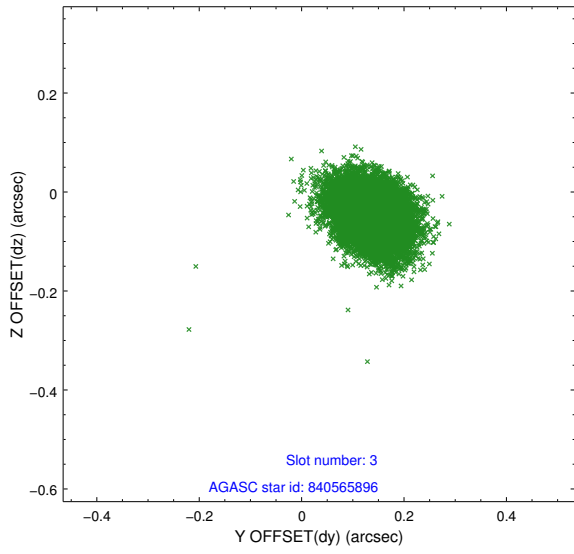
### Slot Statistics

slot	status	id	mag	n_pts	med_dy	med_dz	dr1	dr2	ra	dec	mean_y	mean_z
0	FID	ACIS-S-2	7.10	6148	-0.038	-0.017	0.014	0.024	0.000000	0.000000	-759.46	-1732.91
1	FID	ACIS-S-4	7.20	6147	0.058	0.022	0.012	0.036	0.000000	0.000000	2153.86	175.50
2	FID	ACIS-S-5	7.23	6149	-0.054	0.002	0.010	0.015	0.000000	0.000000	-1812.17	169.27
3	GUIDE	840565896	8.22	12290	0.139	-0.045	0.058	0.095	3.323646	-23.732514	1754.61	-1004.24
4	GUIDE	840568104	8.00	12295	0.041	-0.028	0.065	0.104	3.814856	-22.890920	-837.71	1253.26
5	GUIDE	840569088	8.00	12294	-0.047	0.064	0.054	0.088	2.901742	-23.632364	1097.35	-2281.94
6	GUIDE	840570320	8.75	12292	-0.099	-0.005	0.074	0.118	3.286958	-22.935511	-1070.63	-489.13
7	GUIDE	840565040	9.56	12292	-0.033	0.015	0.111	0.181	4.068979	-22.578007	-1745.65	2329.06

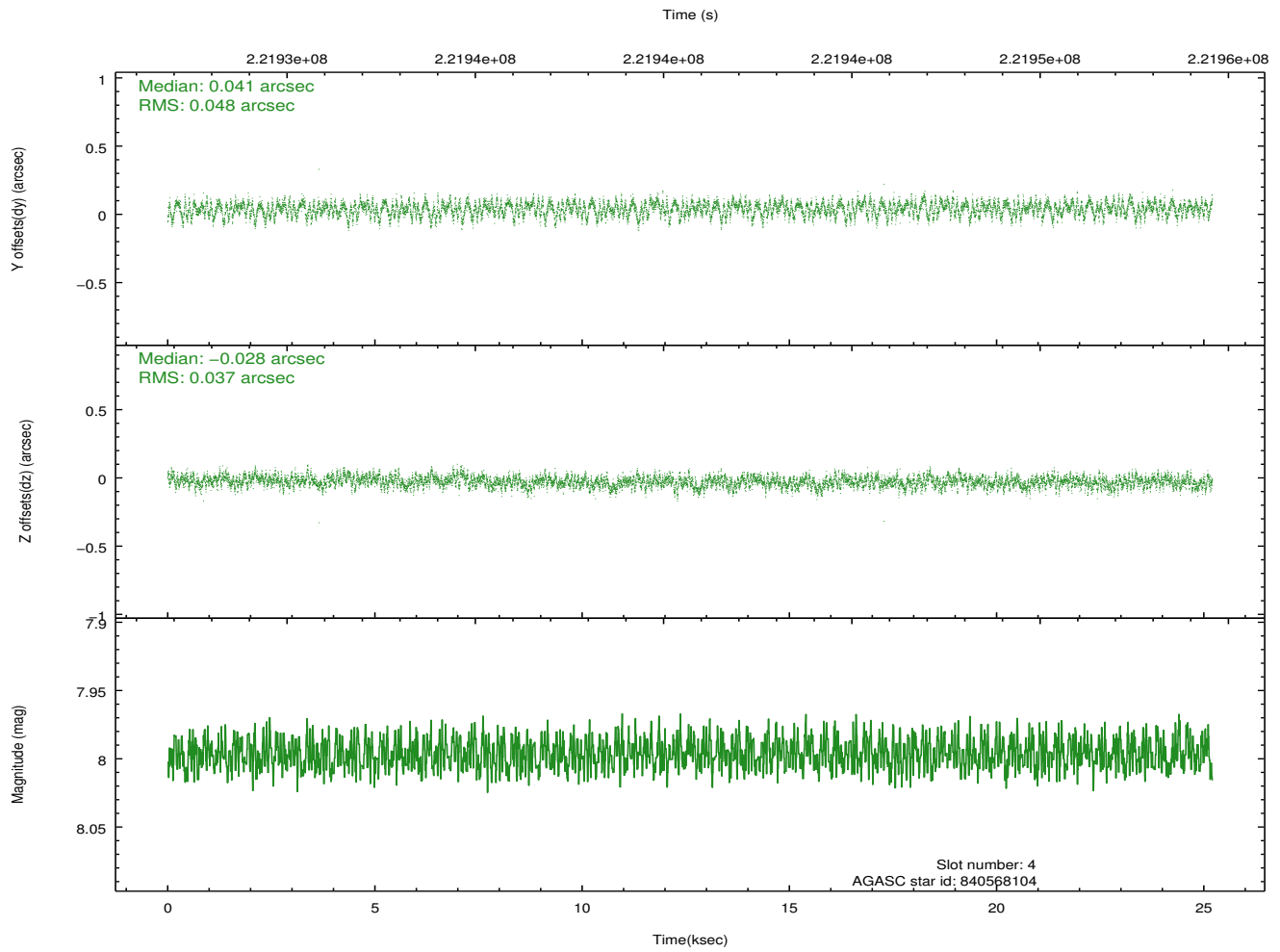
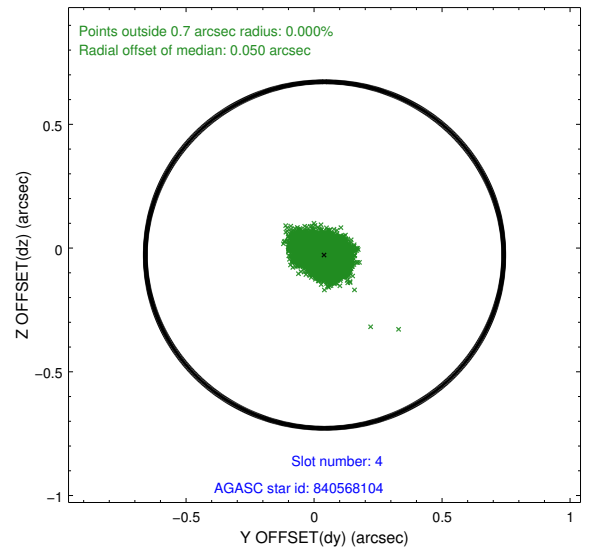
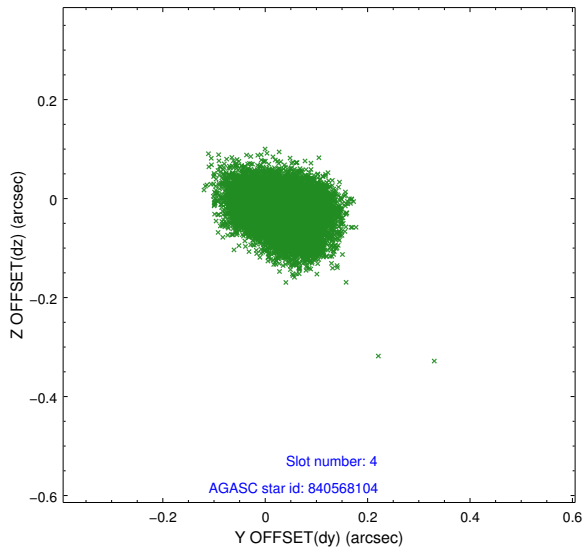
∞

## 2.4 Star Slots

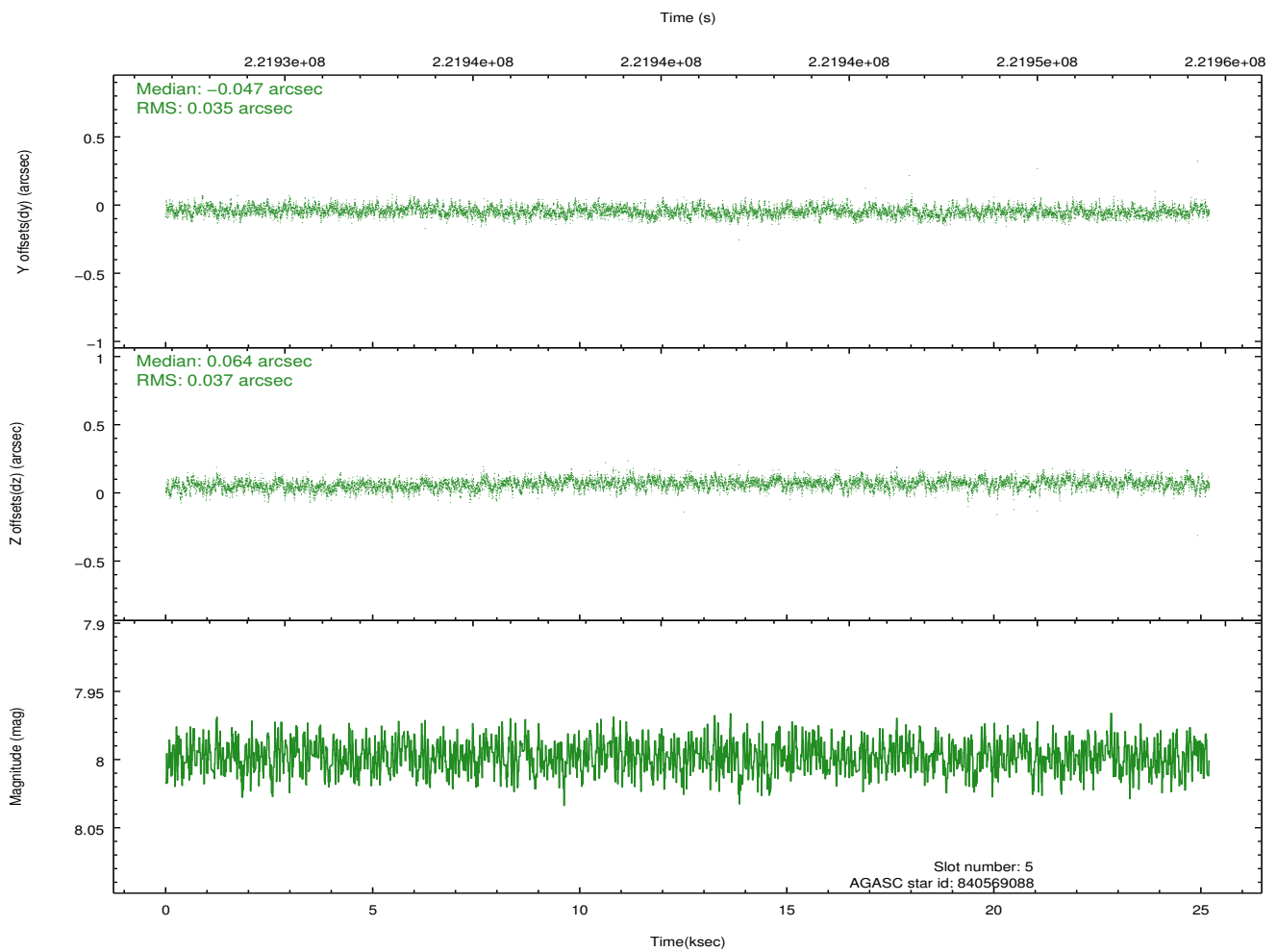
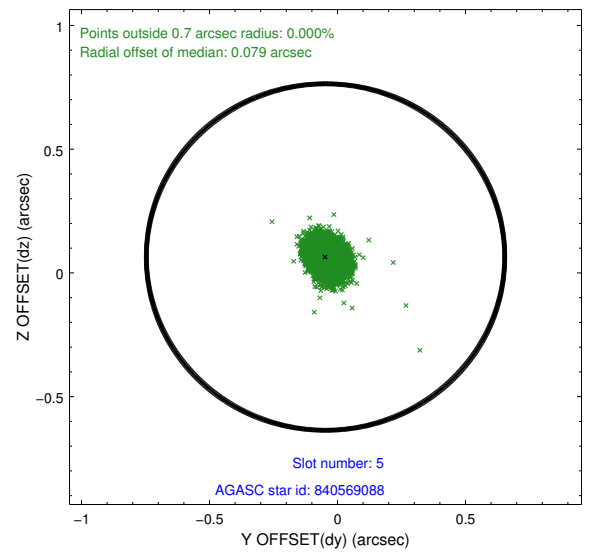
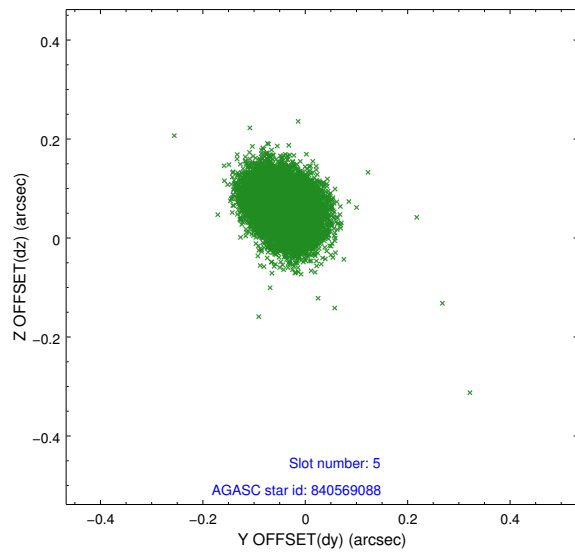
### 2.4.1 Slot 3



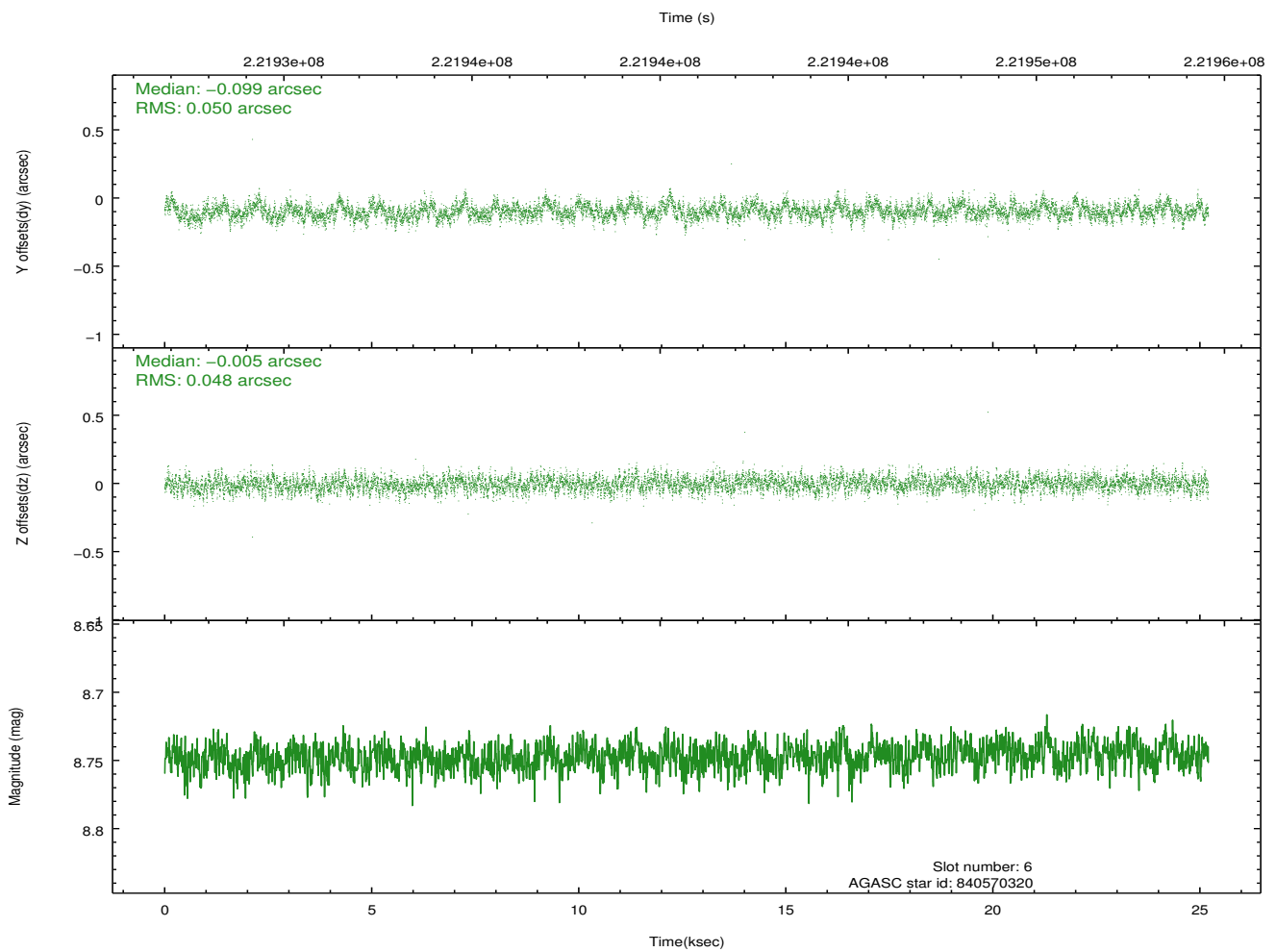
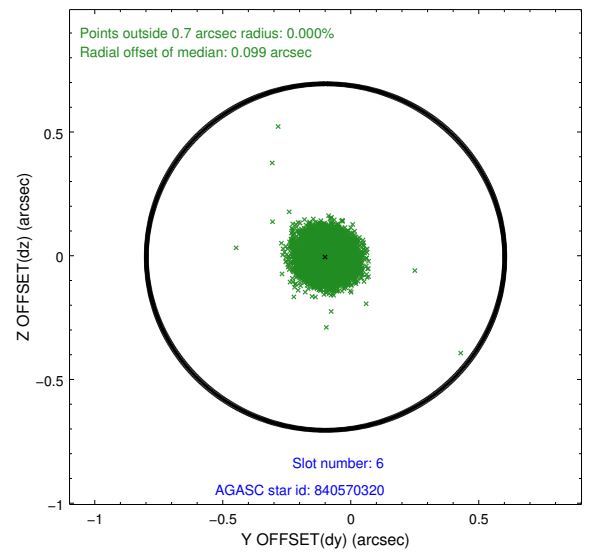
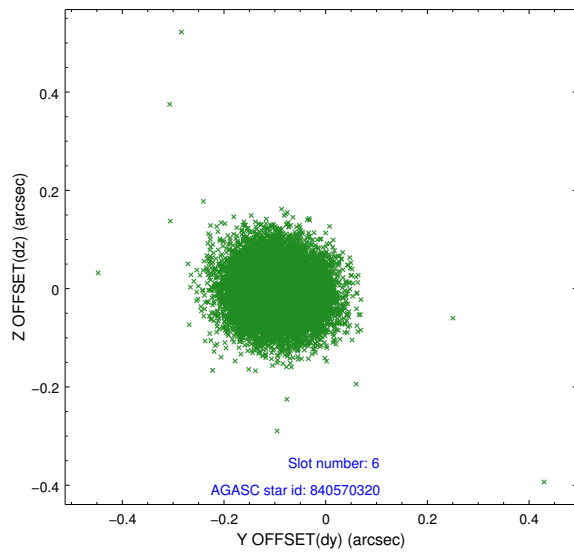
## 2.4.2 Slot 4



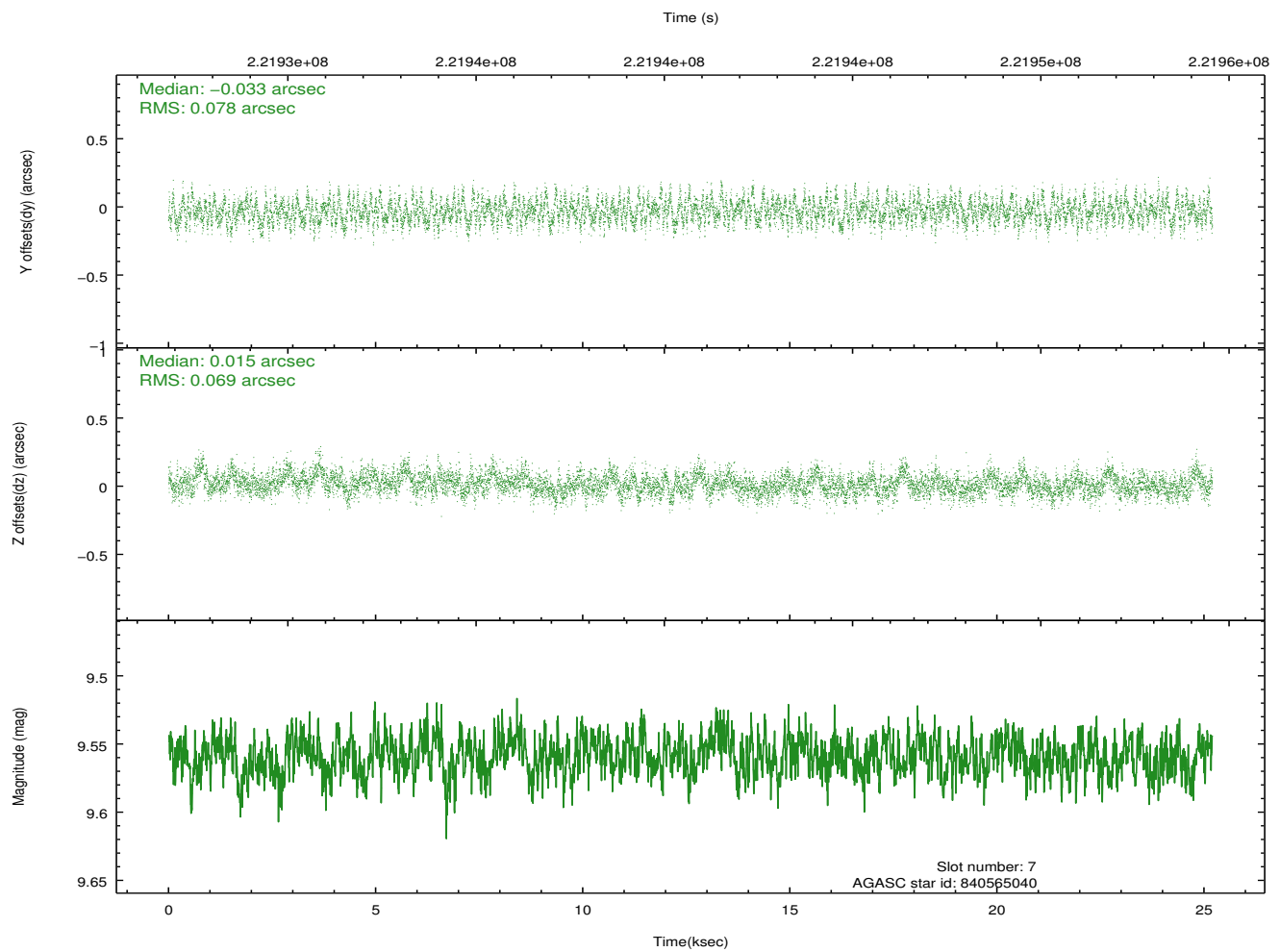
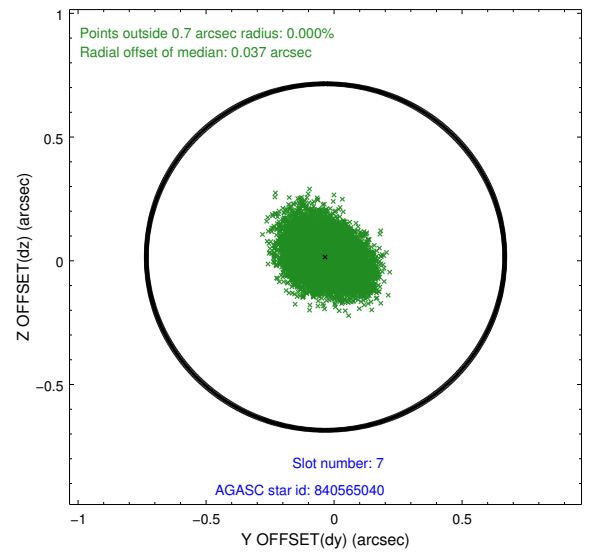
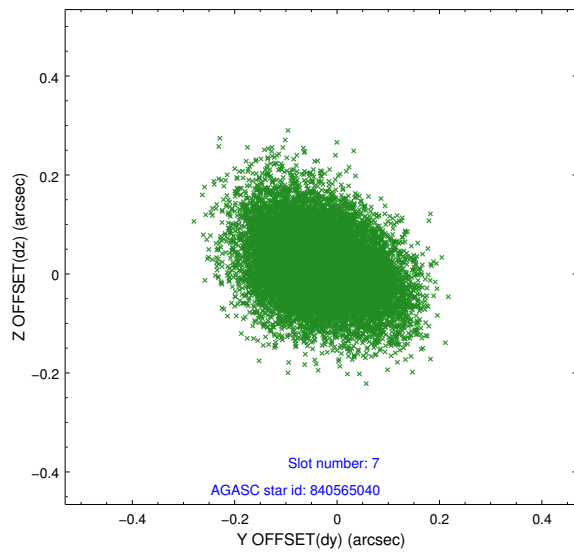
### 2.4.3 Slot 5



## 2.4.4 Slot 6

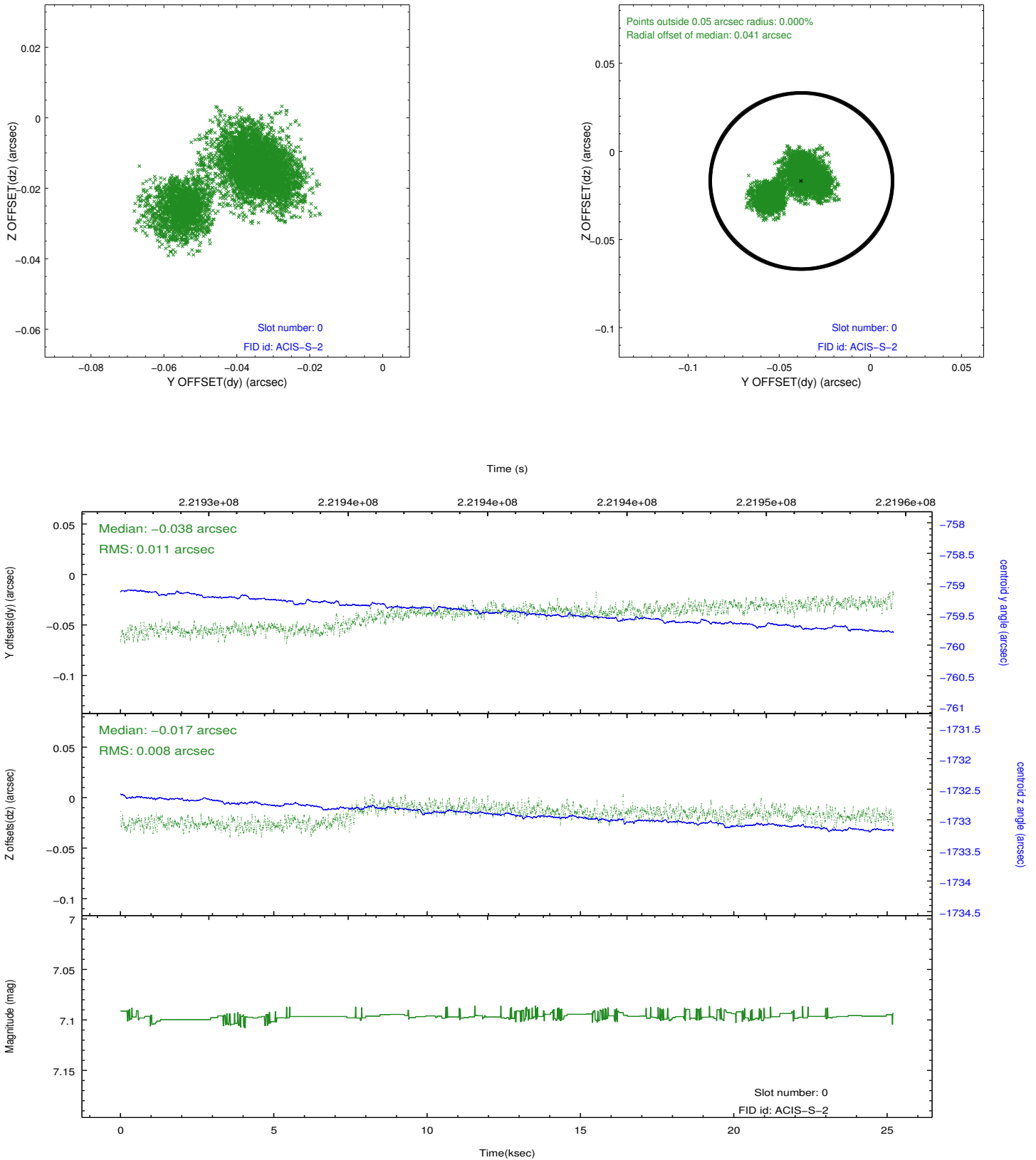


## 2.4.5 Slot 7

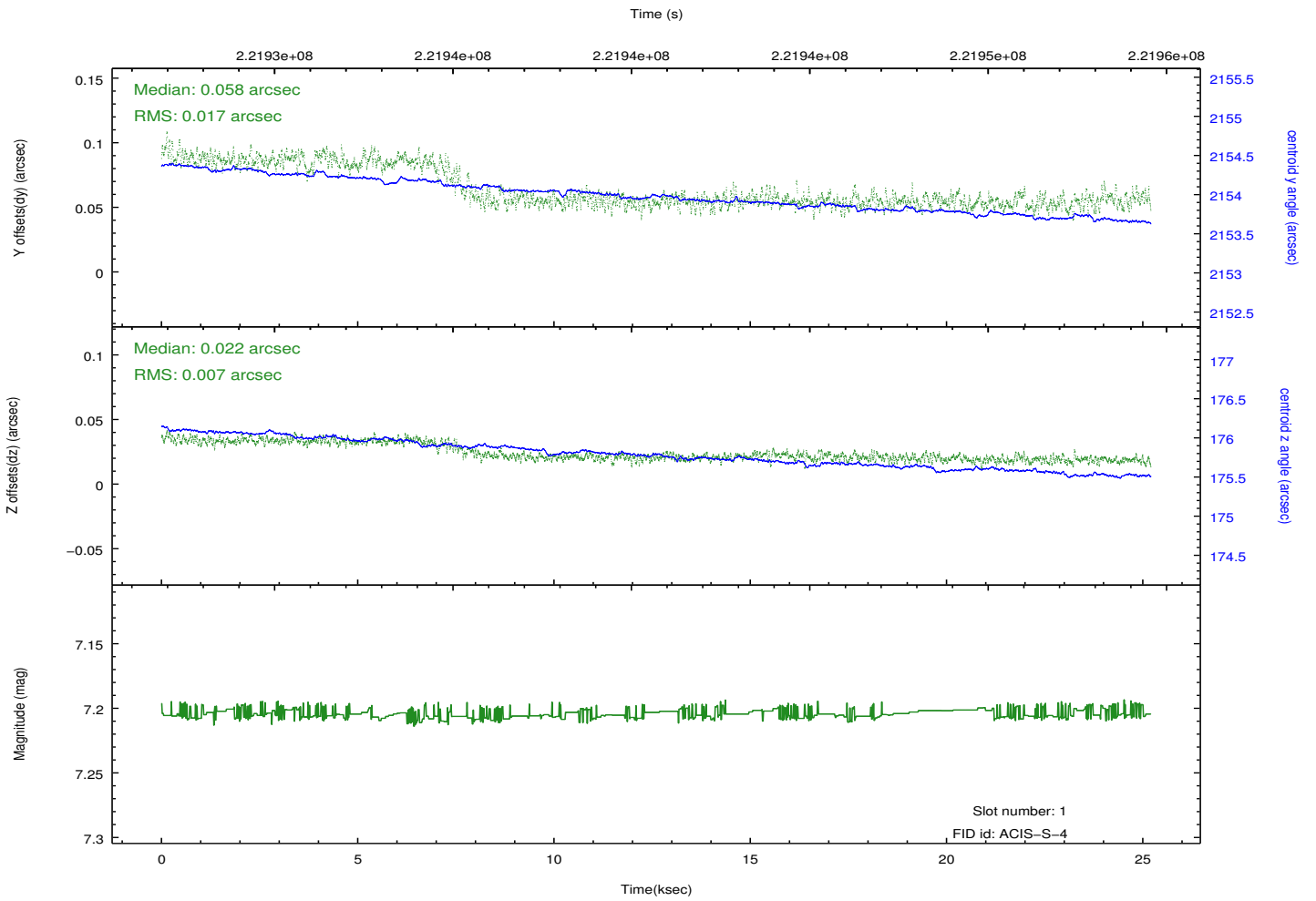
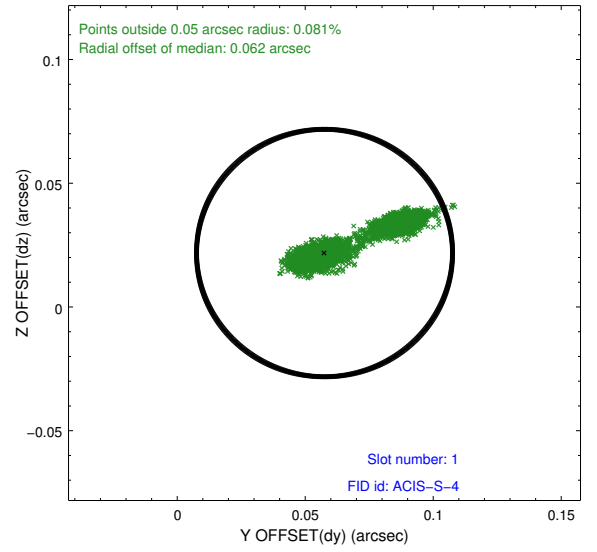
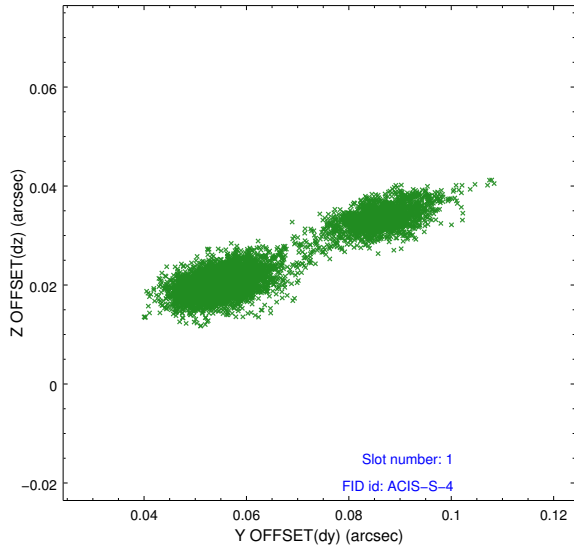


## 2.5 FID Slots

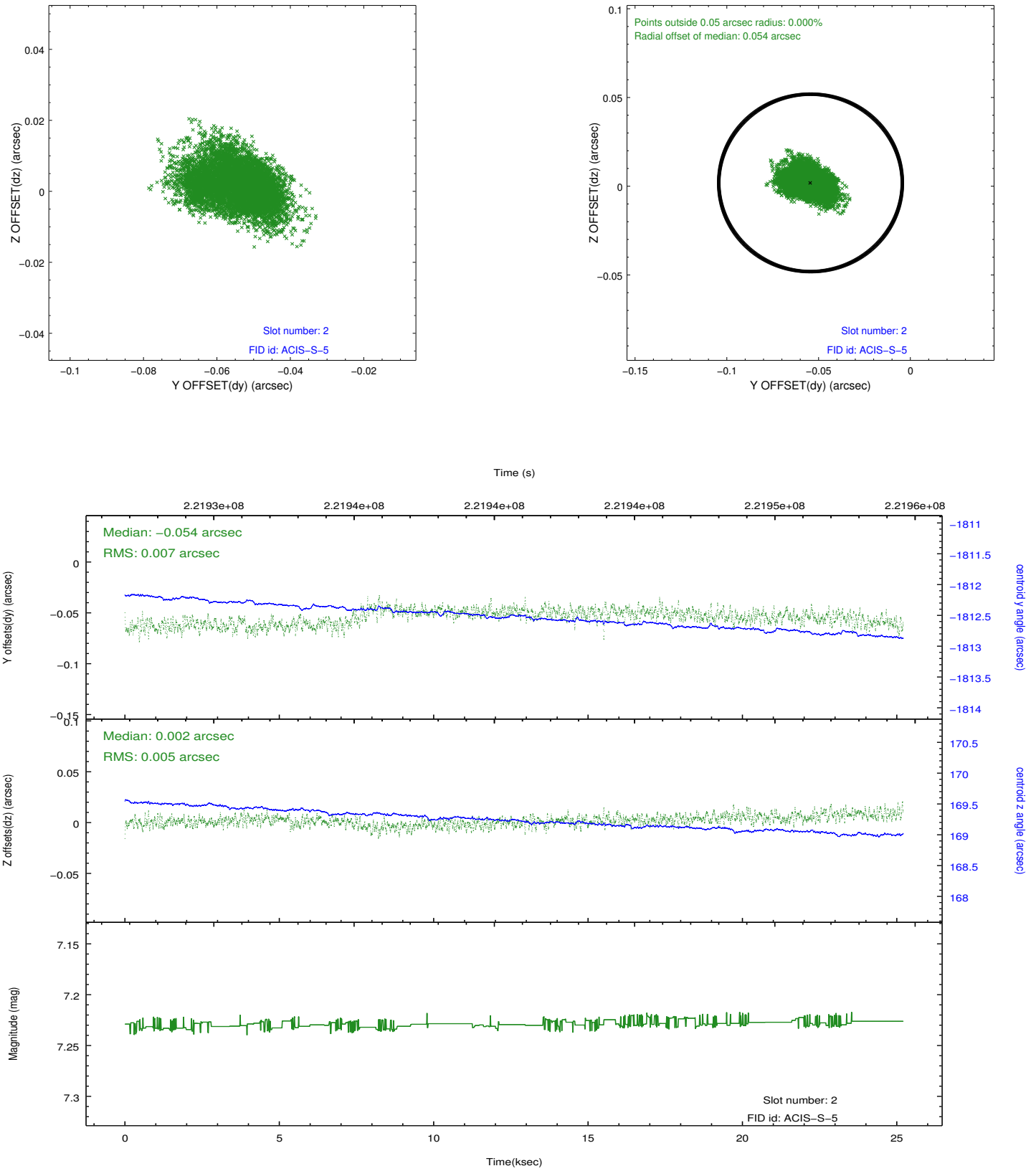
### 2.5.1 Slot 0



## 2.5.2 Slot 1



### 2.5.3 Slot 2



# A Summary

## A.1 Status

V&V Scientist	Jen Lauer
V&V Date (YYYY-MM-DD)	2013.01.08
V&V Edition	1
V&V Disposition and Status	OK
V&V Charge Time	24.95679

## A.2 Comments