

V&V Reference Report

L2 ASCDS Version : 8.1.1

Observation 62504 - L2 Version 4
Chandra X-Ray Center

L2 Processing Date : Sep 23 2010

Contents

1	Front	2
2	OBI	3
2.1	OBI	3
2.1.1	Images	3
2.1.2	Bias	3
2.1.3	Parameters	4
2.1.4	Events	4
2.2	Compared Parameters	5
2.3	Star Slots	6
2.4	FID Slots	6
A	Summary	7
A.1	Status	7
A.2	Comments	7

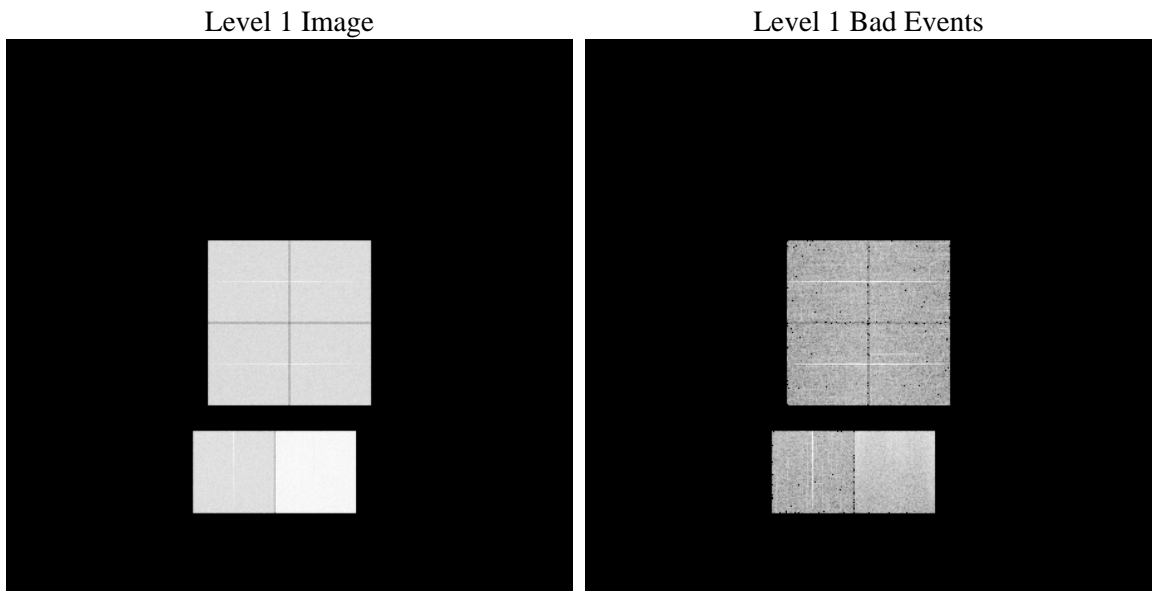
1 Front

seq_num	 	Sequence number
obs_id	62504	Observation id
title	ACIS-012367 diagnostics	Proposal title
observer	CHANDRA engineering request/realtime commanding	Principal investig
object	 	Source name
dtycle	0	
cycle	P	events from which exps? Prim/Second/Both
ra_targ	0.0	Observer's specified target RA
dec_targ	0.0	Observer's specified target Dec
ra_nom	83.873530636947	Nominal RA
dec_nom	-69.265392816237	Nominal Dec
roll_nom	71.928486508707	Nominal Roll
revision	4	Processing version of data
ontime	7104.1671675593	Sum of GTIs [s]
livetime	7014.2099252677	Livetime [s]
ontime0	2725.5945292413	Sum of GTIs [s]
ontime1	2783.5458713919	Sum of GTIs [s]
ontime2	2592.793998912	Sum of GTIs [s]
ontime3	2670.1052104309	Sum of GTIs [s]
ontime6	2959.0682589486	Sum of GTIs [s]
ontime7	7104.1671675593	Sum of GTIs [s]
l2events	2014092	Number of level 2 events

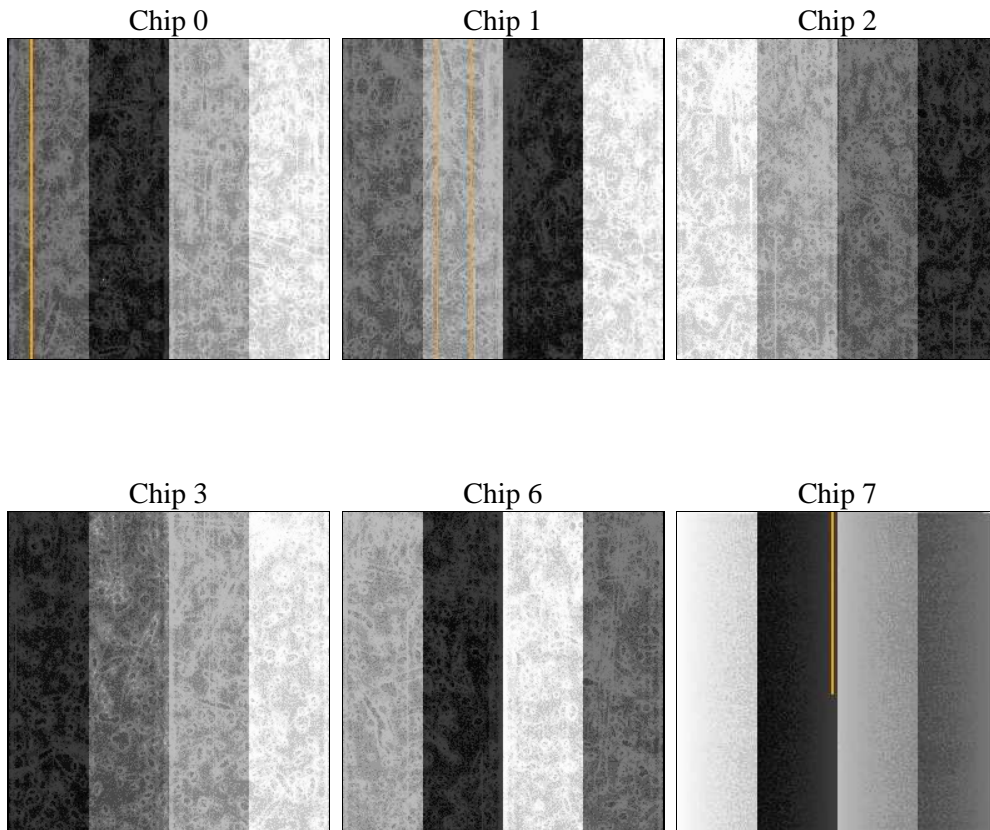
2 OBI

2.1 OBI

2.1.1 Images



2.1.2 Bias



2.1.3 Parameters

obi_num	0	Obi number	sched_exp_time	0.0	Scheduled observation exposure time
ascdsver	8.3.2.1	ASCDS version number	ontime	7104.1671675593	Sum of GTIs [s]
caldbver	4.3.1	 	ontime0	2725.5945292413	Sum of GTIs [s]
date	2010-09-23T17:50:14	Date and time of file creation	ontime1	2783.5458713919	Sum of GTIs [s]
revision	4	Processing version of data	ontime2	2592.793998912	Sum of GTIs [s]
			ontime3	2670.1052104309	Sum of GTIs [s]
			ontime6	2959.0682589486	Sum of GTIs [s]
			ontime7	7104.1671675593	Sum of GTIs [s]
			l1events	2274914	Number of level 1 events

2.1.4 Events

	ccd 0	ccd 1	ccd 2	ccd 3	ccd 6	ccd 7		ccd 0	ccd 1	ccd 2	ccd 3	ccd 6	ccd 7
level 1 events	292701	299345	283202	292310	334414	772942	grade 0 events	139879	142664	131854	138952	150205	137645
rejected events	33306	33673	33210	34084	37584	68062		47%	47%	46%	47%	44%	17%
rejected %	11%	11%	11%	11%	11%	8%	grade 1 events	752	786	715	728	694	375
								0%	0%	0%	0%	0%	0%
							grade 2 events	49721	51044	51805	51312	64343	205870
								16%	17%	18%	17%	19%	26%
							grade 3 events	15697	16153	14649	15426	16436	56652
								5%	5%	5%	5%	4%	7%
							grade 4 events	15515	16153	14654	15425	16352	54864
								5%	5%	5%	5%	4%	7%
							grade 5 events	2234	2280	2053	2144	2491	10658
								0%	0%	0%	0%	0%	1%
							grade 6 events	38583	39658	37030	37111	49494	249849
								13%	13%	13%	12%	14%	32%
							grade 7 events	30320	30607	30442	31212	34399	57029
								10%	10%	10%	10%	10%	7%

2.2 Compared Parameters

Parameter	Planned	Actual	Parameter	Planned	Actual
Instrument	ACIS	ACIS	Obspar format version number	6	6
Detector	ACIS-012367	ACIS-012367	Obspar file type	PREDICTED	ACTUAL
Grating	NONE	NONE	Obspar update status	NONE	UPDATED
Data mode	FAINT	FAINT	On-chip summing requested	N	N
Observation mode	SECONDARY	SECONDARY	Subarray requested	NONE	NONE
Pointing RA	0	83.87353063694694	Alternating exposures requested	N	N
Pointing Dec	0	-69.26539281623695	Primary exposure time	0.000000	3.2
Pointing Roll	0.0	71.92848650870744			
SIM focus pos (mm)	-0.782348	-0.6828225247311905			
SIM defocus (mm)	0	0.8505141146731063			
SIM translation stage pos (mm)	-233.592463	250.4459185577885			
SIM translation stage offset (mm)	0	0.01005983576618519			
Observation start time	55691998.412	55691997.64375			
Observation start date	1999-10-07T13:59:58	1999-10-07T13:59:57			
Observation end time	55719587.313	55719586.544743			
Observation end date	1999-10-07T21:39:47	1999-10-07T21:39:46			
Read mode	TIMED	TIMED			

2.3 Star Slots

2.4 FID Slots

A Summary

A.1 Status

V&V Scientist	Joy Nichols
V&V Date (YYYY-MM-DD)	2010.10.01
V&V Edition	1
V&V Disposition and Status	OK
V&V Charge Time	7.1041671675593

A.2 Comments