

V&V Reference Report

L2 ASCDS Version : 8.5.1.1

Observation 6284 - L2 Version 3
Chandra X-Ray Center

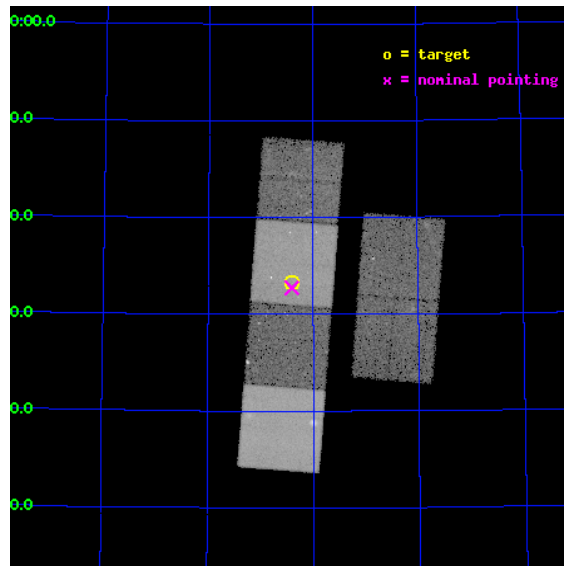
L2 Processing Date : Dec 26 2012

Contents

1	Front	2
2	OBI	3
2.1	OBI	3
2.1.1	Images	3
2.1.2	Bias	3
2.1.3	Parameters	4
2.1.4	Events	4
2.2	Compared Parameters	5
2.3	Aspect	6
2.4	Star Slots	9
2.4.1	Slot 3	9
2.4.2	Slot 4	10
2.4.3	Slot 5	11
2.4.4	Slot 6	12
2.4.5	Slot 7	13
2.5	FID Slots	14
2.5.1	Slot 0	14
2.5.2	Slot 1	15
2.5.3	Slot 2	16
A	Summary	17
A.1	Status	17
A.2	Comments	17

1 Front

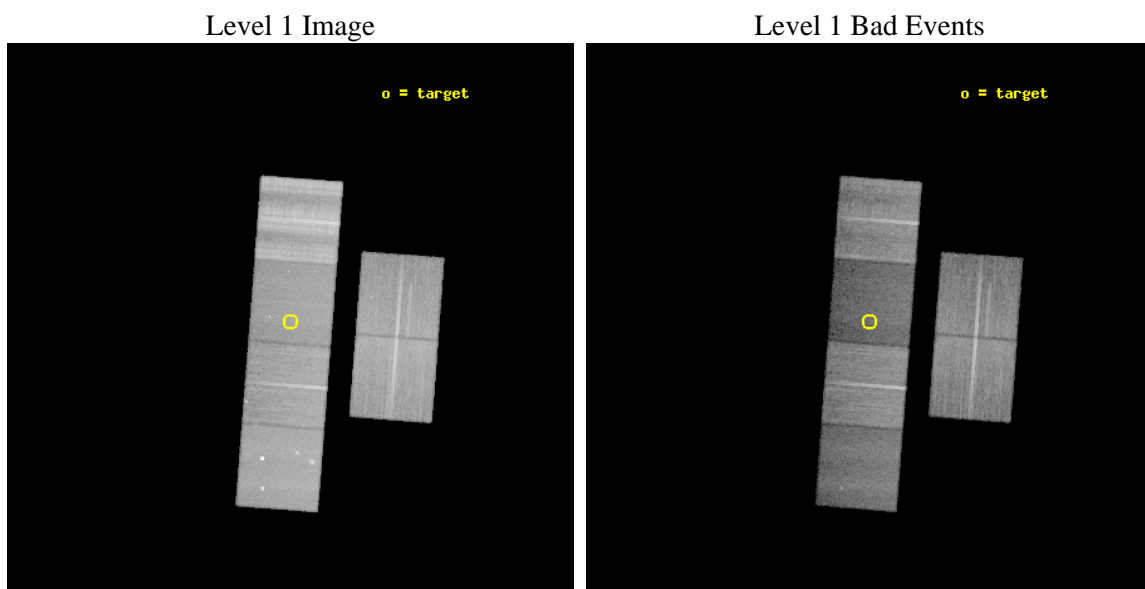
seq_num	500603	Sequence number
obs_id	6284	Observation id
title	Chandra Observation of the Type II _n Supernova 2005bx	Proposal titl
observer	Prof. Alexei Filippenko	Principal investigator
object	SN 2005bx	Source name
dtycycle	0	
cycle	P	events from which exps? Prim/Second/Both
ra_targ	207.604167	Observer's specified target RA [deg]
dec_targ	68.555389	Observer's specified target Dec [deg]
ra_nom	207.60153698715	Nominal RA [deg]
dec_nom	68.545752298985	Nominal Dec [deg]
roll_nom	274.40809085661	Nominal Roll [deg]
revision	3	Processing version of data
ontime	28742.399892926	Sum of GTIs [s]
liveltime	28378.446318887	Livetime [s]
ontime2	28742.399892926	Sum of GTIs [s]
ontime3	28735.91808188	Sum of GTIs [s]
ontime5	28742.399892926	Sum of GTIs [s]
ontime6	28742.399892926	Sum of GTIs [s]
ontime7	28742.399892926	Sum of GTIs [s]
ontime8	28735.91808185	Sum of GTIs [s]
l2events	276296	Number of level 2 events



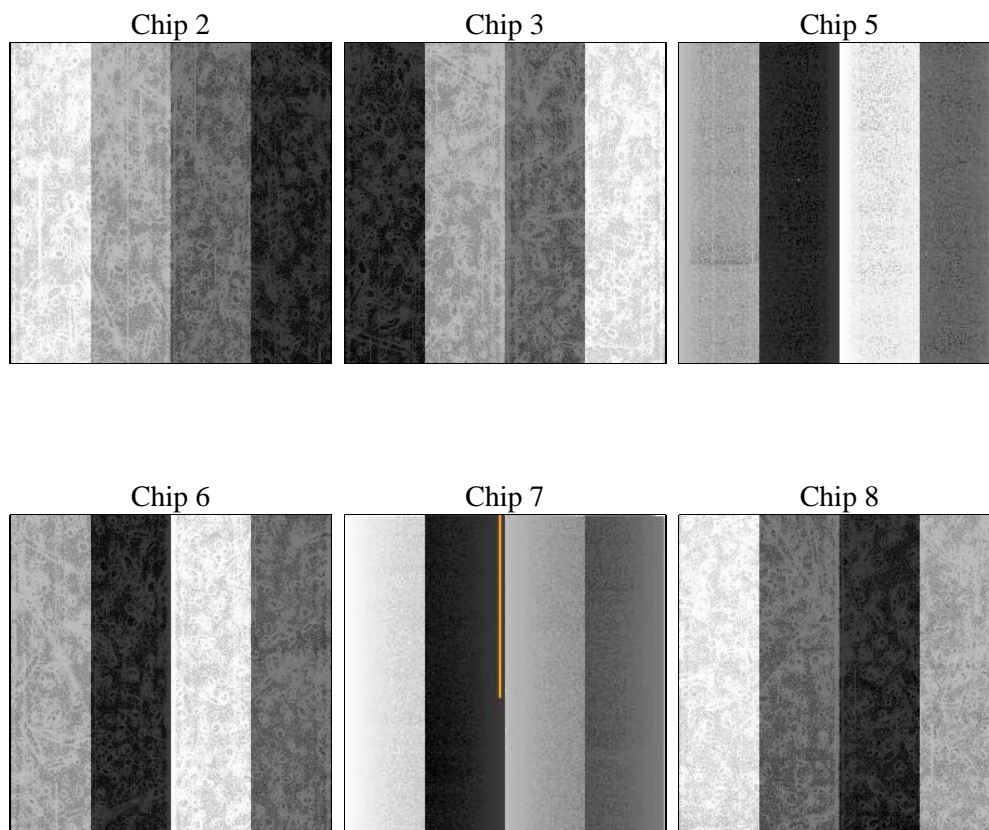
2 OBI

2.1 OBI

2.1.1 Images



2.1.2 Bias



2.1.3 Parameters

obi_num	1	Obi number	sched_exp_time	28600.000000	[s] Scheduled observation exposure time
ascdsver	8.5.1.1	Processing system revision	ontime	28742.399892926	Sum of GTIs [s]
caldbver	4.5.5	 	ontime2	28742.399892926	Sum of GTIs [s]
date	2012-12-26T16:23:59	Date and time of file creation	ontime3	28735.91808188	Sum of GTIs [s]
revision	3	Processing version of data	ontime5	28742.399892926	Sum of GTIs [s]
			ontime6	28742.399892926	Sum of GTIs [s]
			ontime7	28742.399892926	Sum of GTIs [s]
			ontime8	28735.91808185	Sum of GTIs [s]
			l1events	1443070	Number of level 1 events

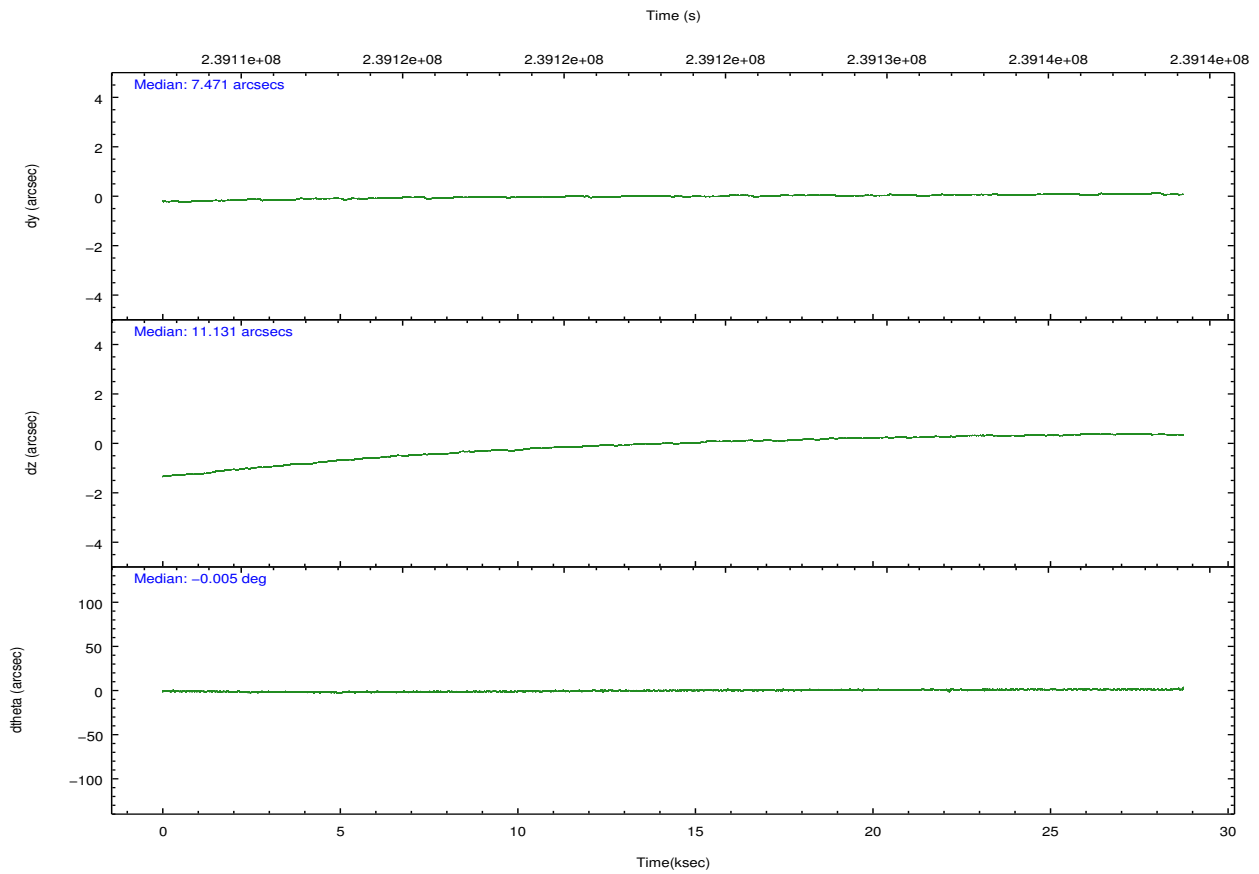
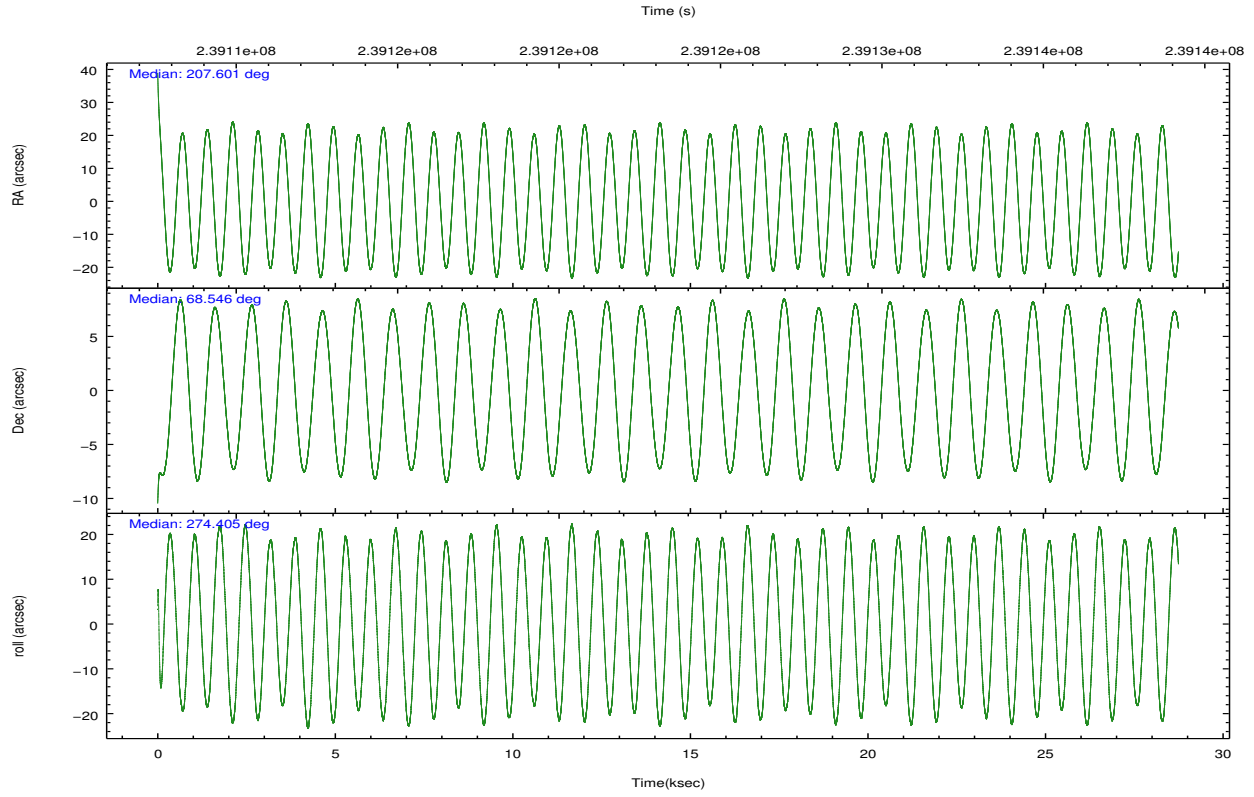
2.1.4 Events

	ccd 2	ccd 3	ccd 5	ccd 6	ccd 7	ccd 8		ccd 2	ccd 3	ccd 5	ccd 6	ccd 7	ccd 8
level 1 events	232215	198050	242445	218114	181307	370939	grade 0 events	9792	7672	19335	9625	9997	45592
rejected events	208418	179343	113035	194822	89961	208449		4%	3%	7%	4%	5%	12%
rejected %	89%	90%	46%	89%	49%	56%	grade 1 events	145	95	502	131	185	373
								0%	0%	0%	0%	0%	0%
							grade 2 events	6852	4147	40198	6057	20843	29418
								2%	2%	16%	2%	11%	7%
							grade 3 events	1967	2051	6725	2080	9413	26660
								0%	1%	2%	0%	5%	7%
							grade 4 events	2421	2006	6353	2154	9474	23708
								1%	1%	2%	0%	5%	6%
							grade 5 events	4781	6001	18527	6086	18502	10822
								2%	3%	7%	2%	10%	2%
							grade 6 events	3699	3499	61800	4254	45062	43292
								1%	1%	25%	1%	24%	11%
							grade 7 events	202558	172579	89005	187727	67831	191074
								87%	87%	36%	86%	37%	51%

2.2 Compared Parameters

Parameter	Planned	Actual	Parameter	Planned	Actual
Instrument	ACIS	ACIS	Obspar format version number	7	7
Detector	ACIS-235678	ACIS-235678	Obspar file type	PREDICTED	ACTUAL
Grating	NONE	NONE	Obspar update status	NONE	UPDATED
Data mode	VFAINT	VFAINT	Number of optional ACIS chips dropped	0	0
Observation mode	POINTING	POINTING	On-chip summing requested	N	N
[deg] Pointing RA	207.558602	207.6015369871476	Subarray requested	NONE	NONE
[deg] Pointing Dec	68.568024	68.54575229898541	Alternating exposures requested	N	N
[deg] Pointing Roll	274.291407	274.408090856607	[s] Primary exposure time	0.000000	3.2
[mm] SIM focus pos	-0.684267	-0.6828225247311905			
[mm] SIM defocus	0	0.001444936568705701			
[mm] SIM translation stage pos	-190.132523	-190.1425803651734			
[mm] SIM translation stage offset	0	0.01005778216563158			
[s] Observation start time (MET)	239109153.184000	239107576.7634			
Observation start date	2005-07-30T11:11:29	2005-07-30T10:46:16			
[s] Observation end time (MET)	239137753.184000	239139511.15236			
Observation end date	2005-07-30T19:08:09	2005-07-30T19:38:31			
Read mode	TIMED	TIMED			

2.3 Aspect

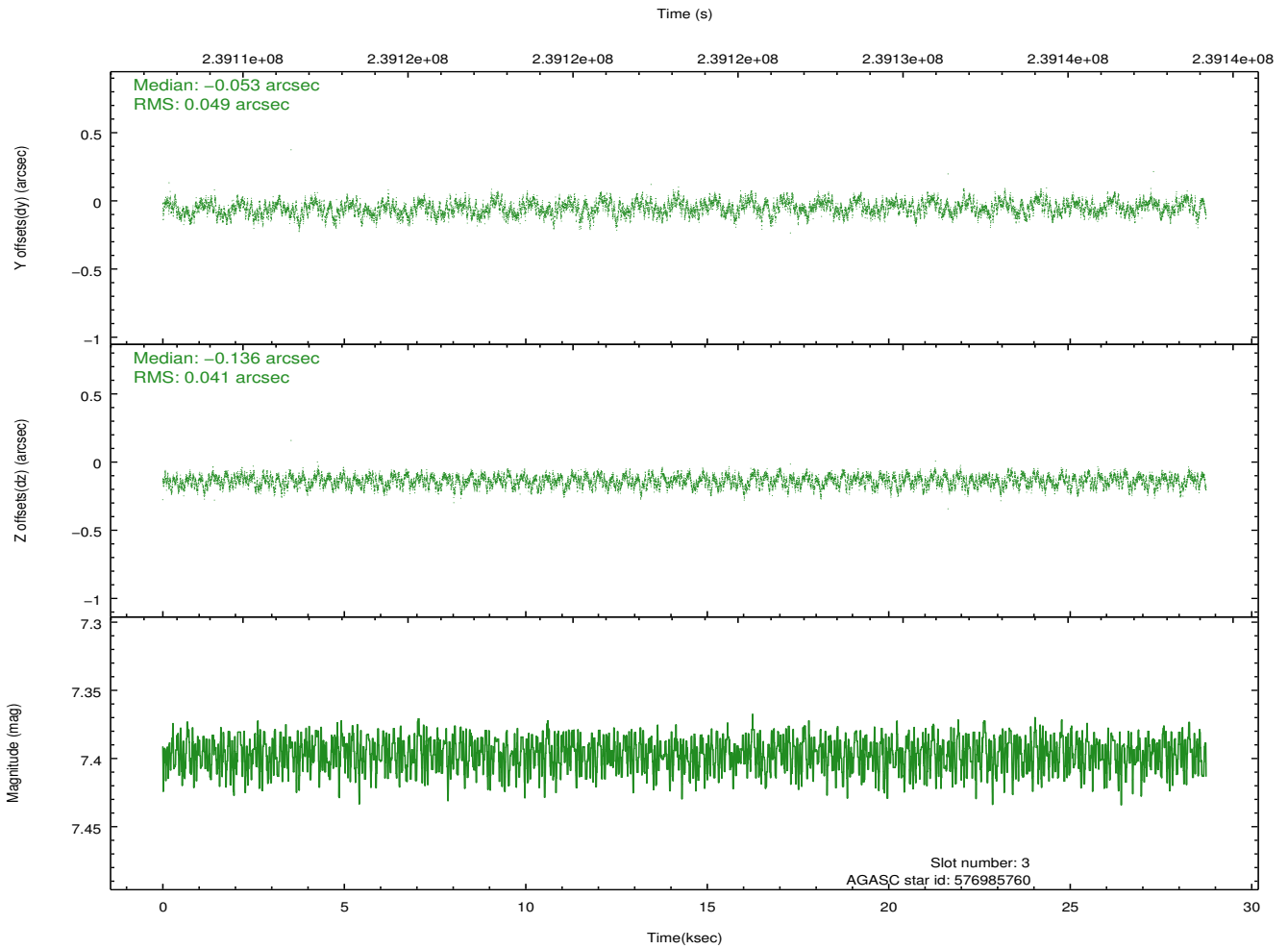
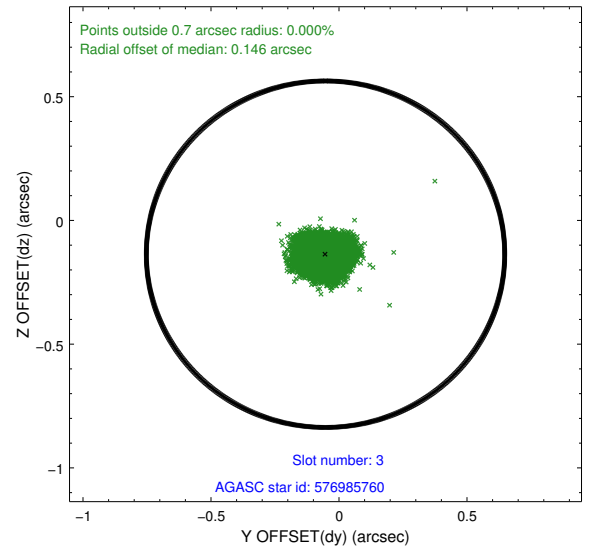
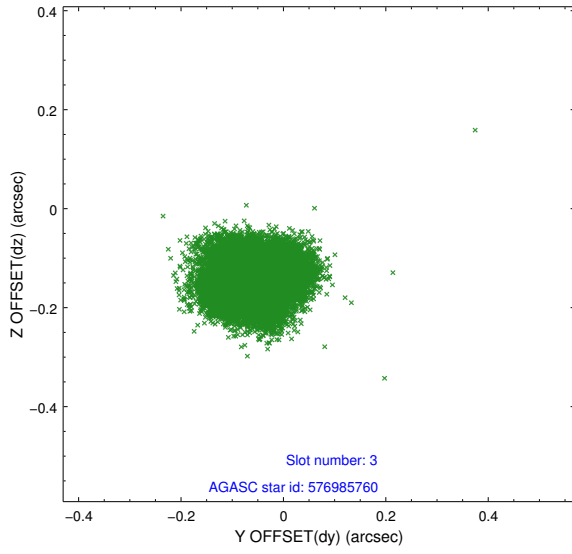


Slot Statistics

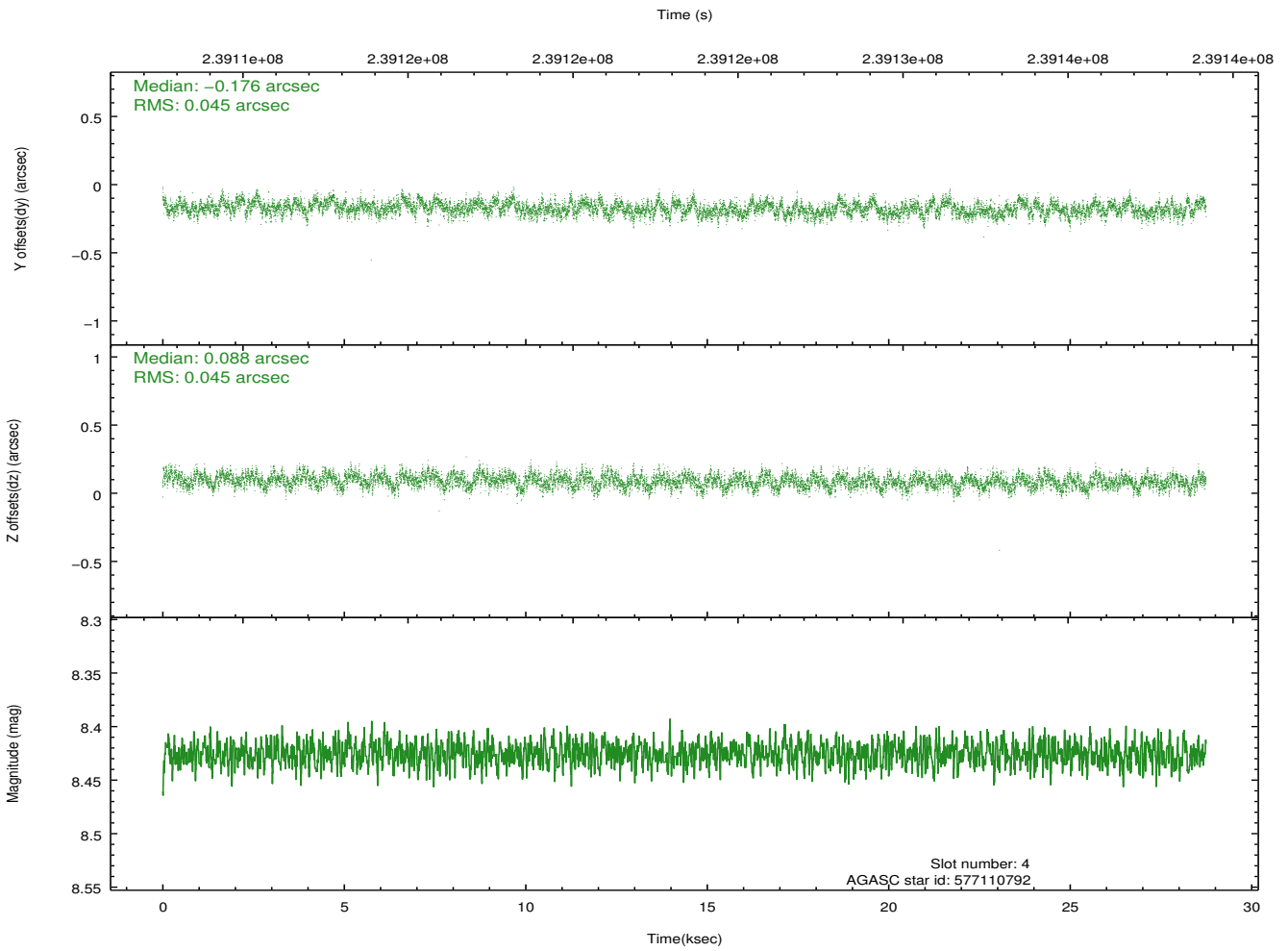
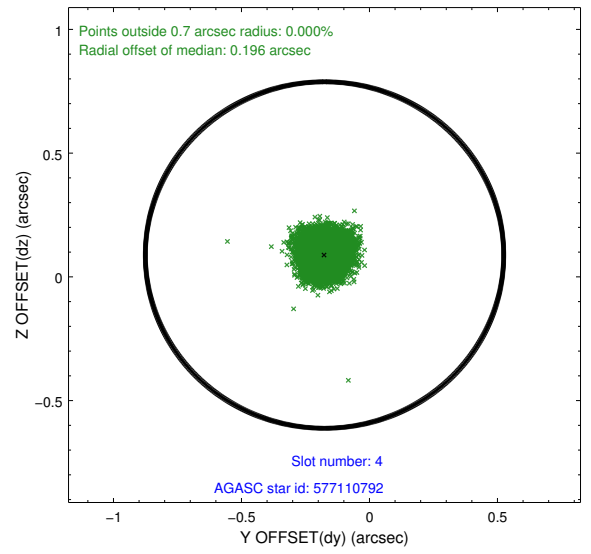
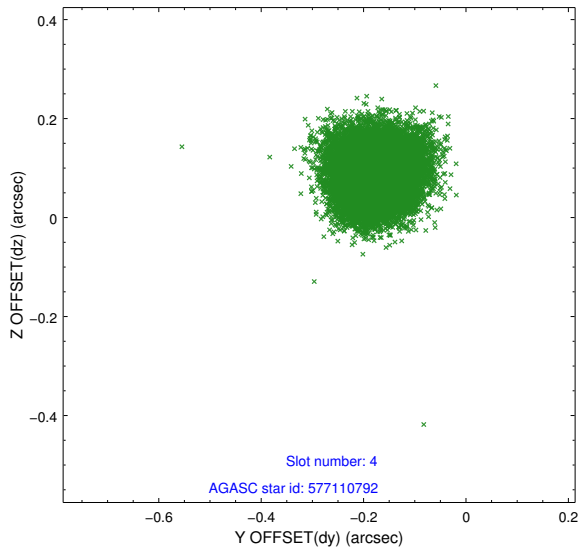
slot	status	id	mag	n_pts	med_dy	med_dz	dr1	dr2	ra	dec	mean_y	mean_z
0	FID	ACIS-S-2	7.10	7011	-0.040	-0.011	0.019	0.029	0.000000	0.000000	-760.23	-1732.23
1	FID	ACIS-S-4	7.20	7011	0.084	0.022	0.022	0.035	0.000000	0.000000	2153.11	176.25
2	FID	ACIS-S-5	7.23	7012	-0.079	-0.000	0.010	0.017	0.000000	0.000000	-1813.04	169.93
3	GUIDE	576985760	7.40	14023	-0.053	-0.136	0.069	0.106	207.721529	69.153363	-2085.59	365.99
4	GUIDE	577110792	8.43	14019	-0.176	0.088	0.069	0.108	209.170624	68.072963	1910.98	2030.03
5	GUIDE	577120680	9.16	14017	0.253	0.054	0.110	0.173	208.850719	68.501563	348.86	1683.64
6	GUIDE	576989584	8.74	14023	-0.072	0.154	0.085	0.135	205.742357	68.734271	-808.78	-2316.66
7	GUIDE	576992152	8.45	14023	0.049	-0.150	0.063	0.100	207.803675	68.326269	891.75	259.21

2.4 Star Slots

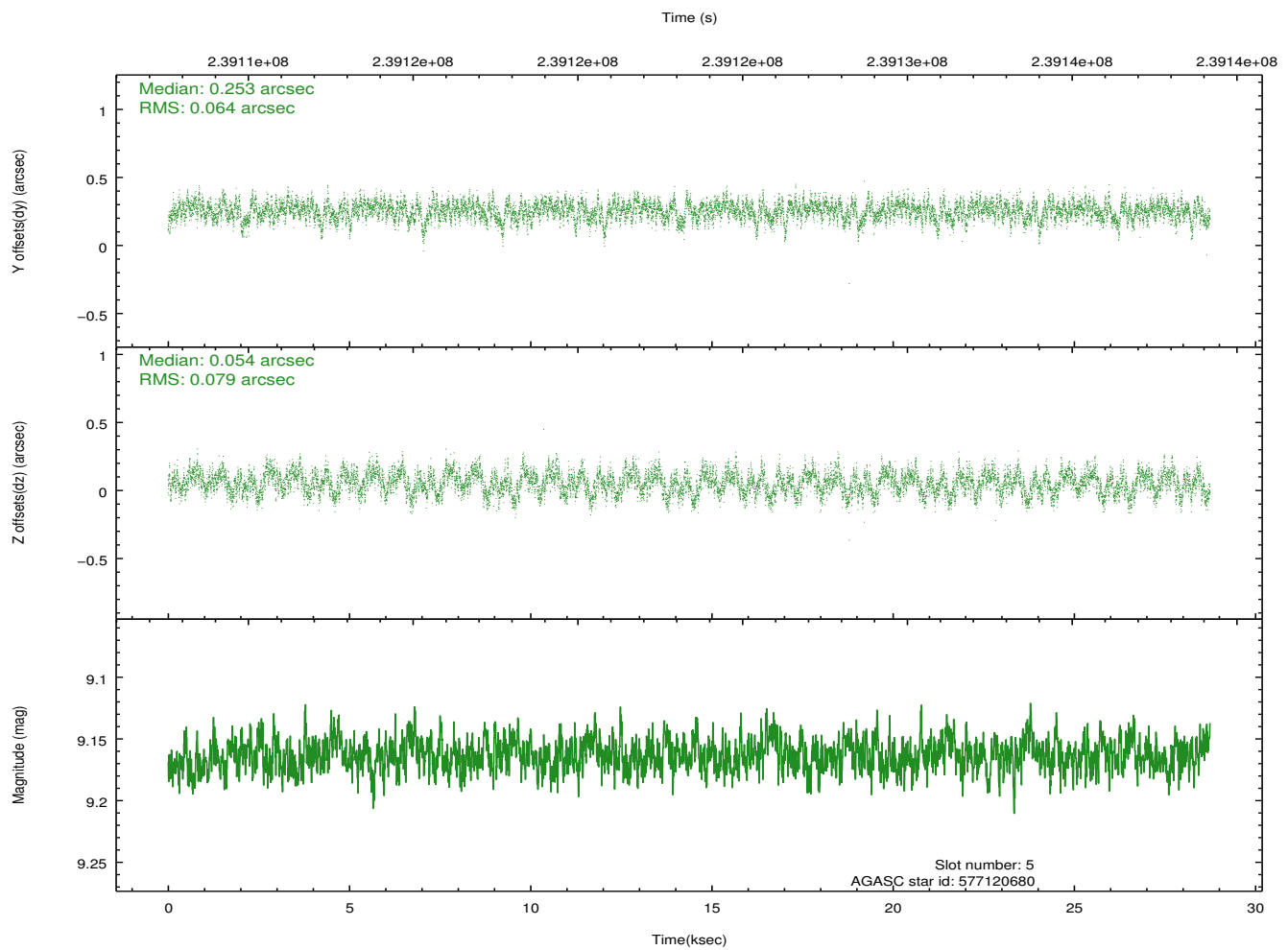
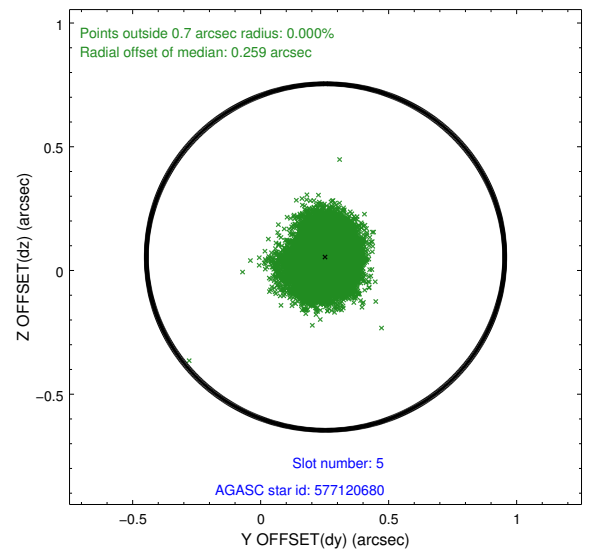
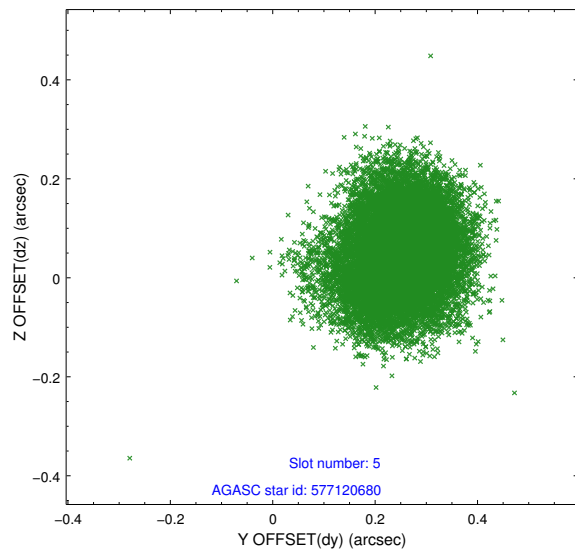
2.4.1 Slot 3



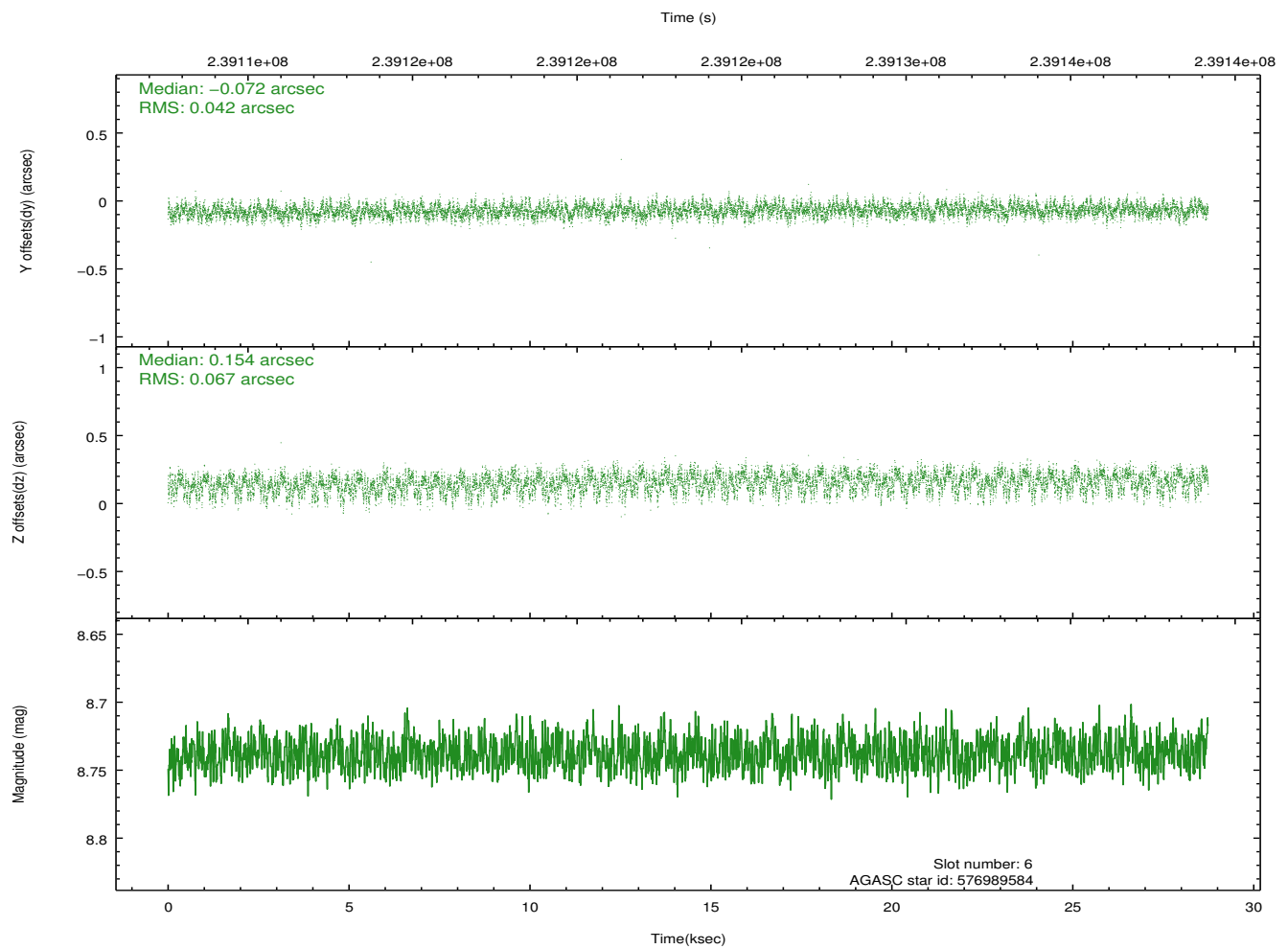
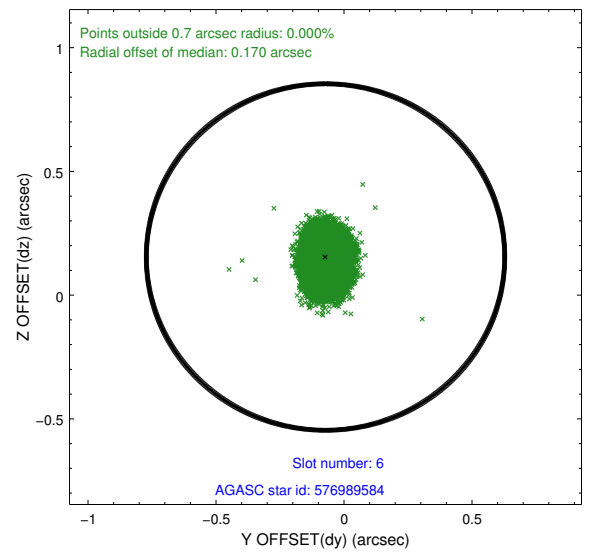
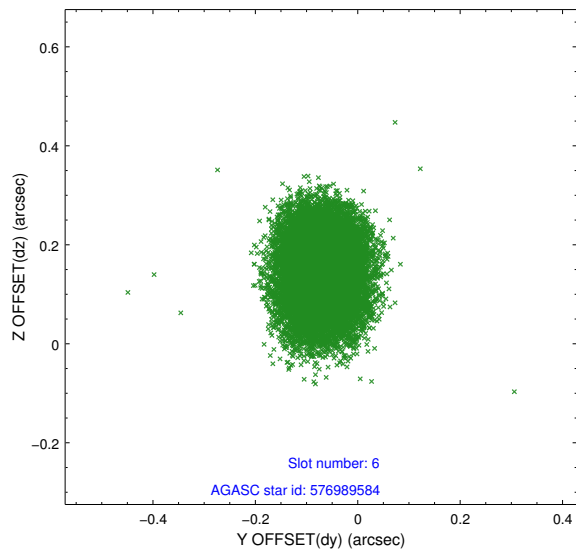
2.4.2 Slot 4



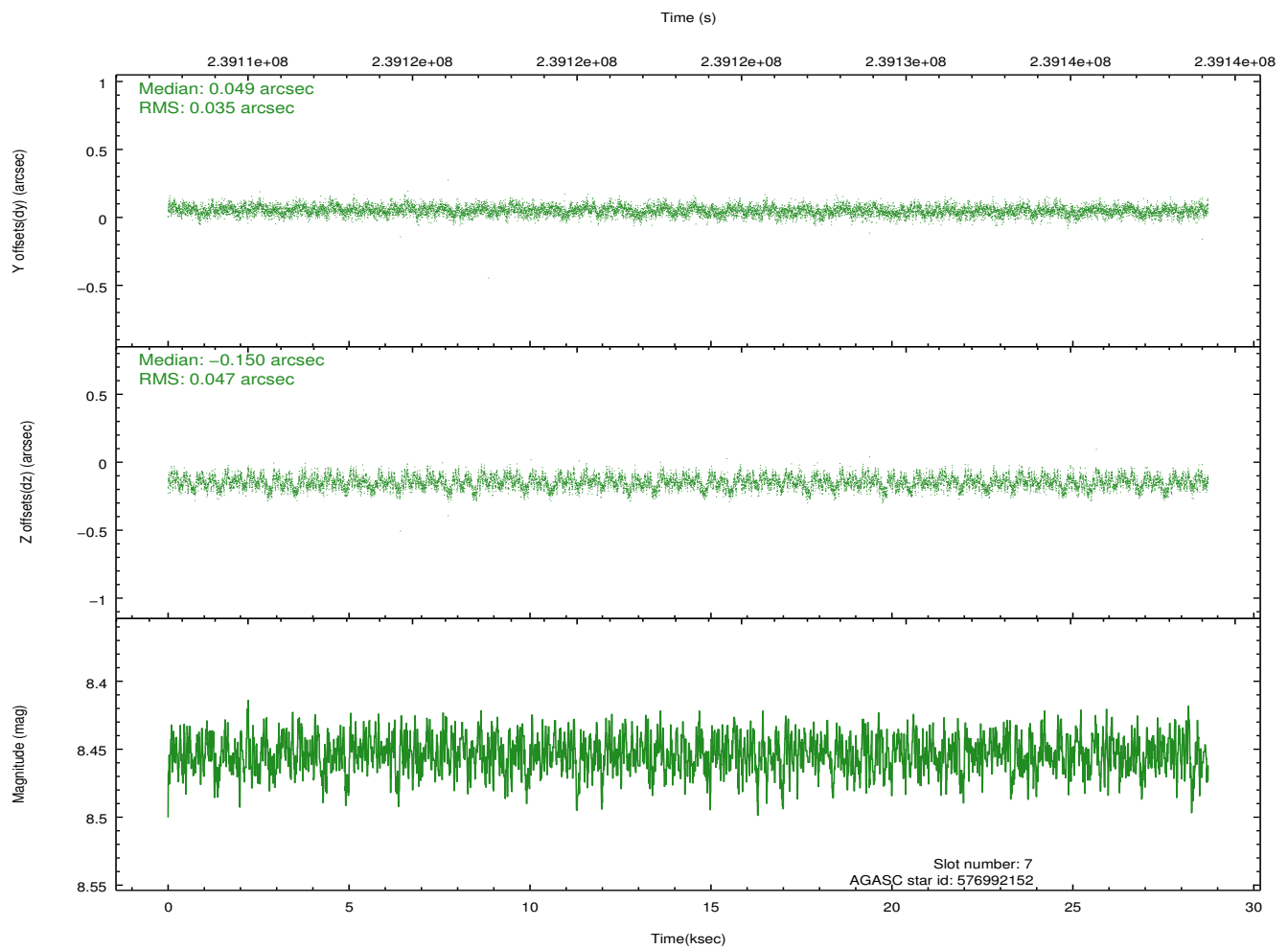
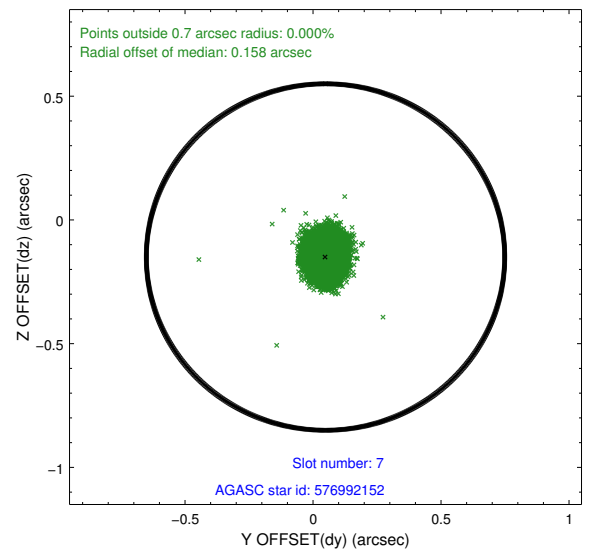
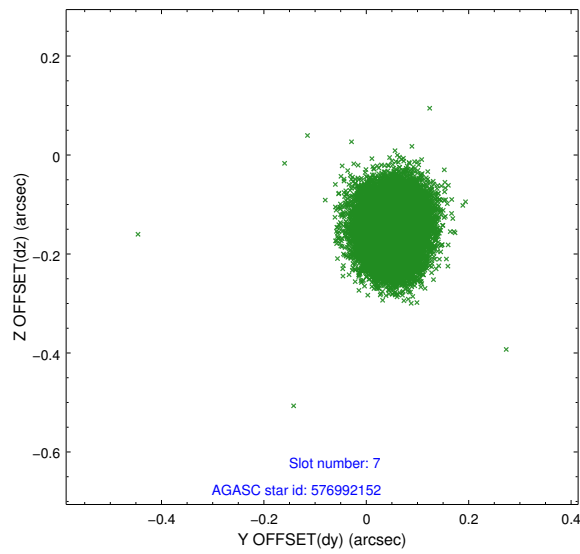
2.4.3 Slot 5



2.4.4 Slot 6

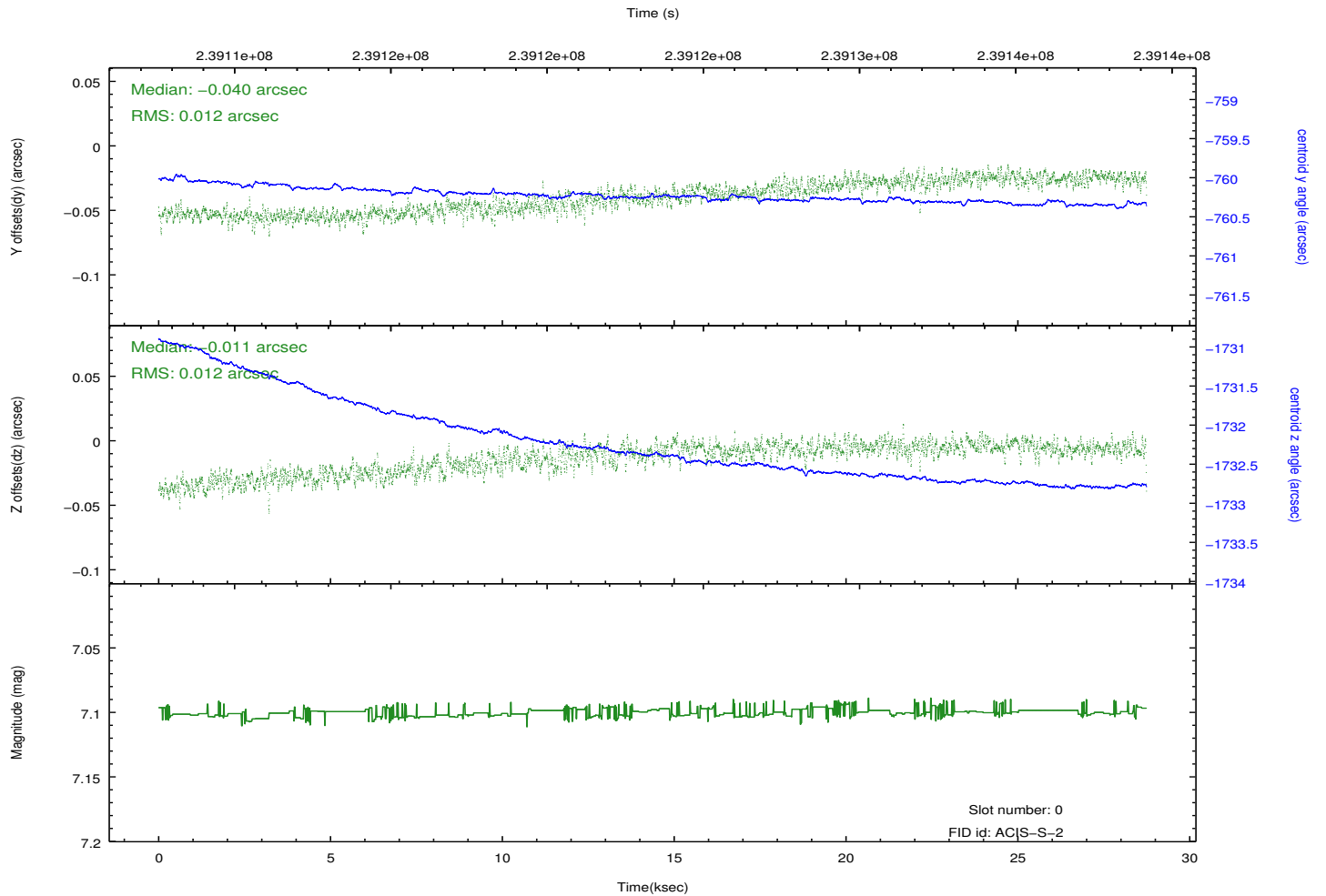
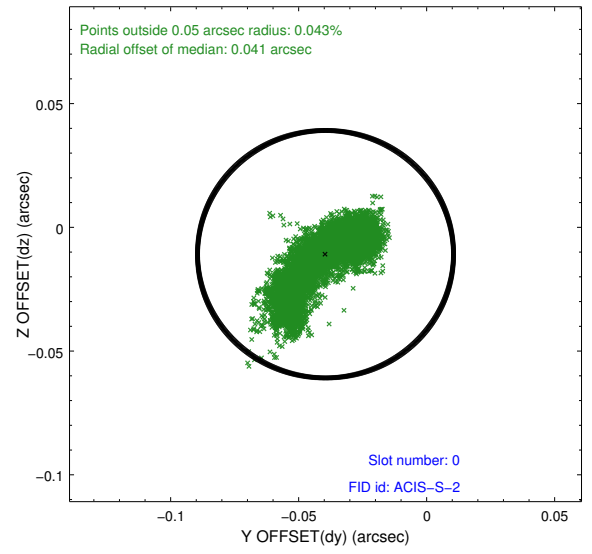
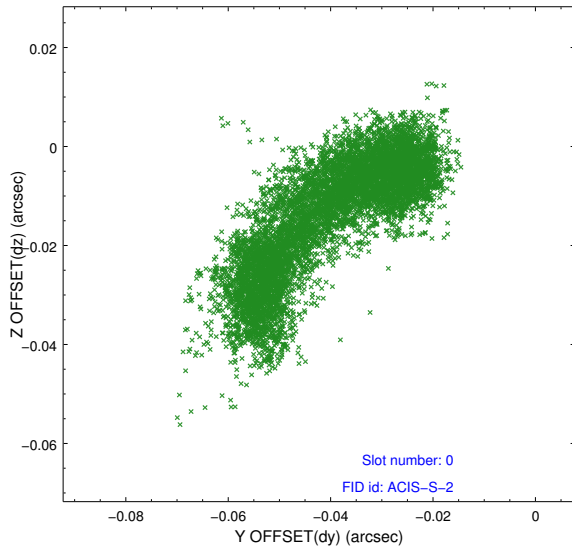


2.4.5 Slot 7

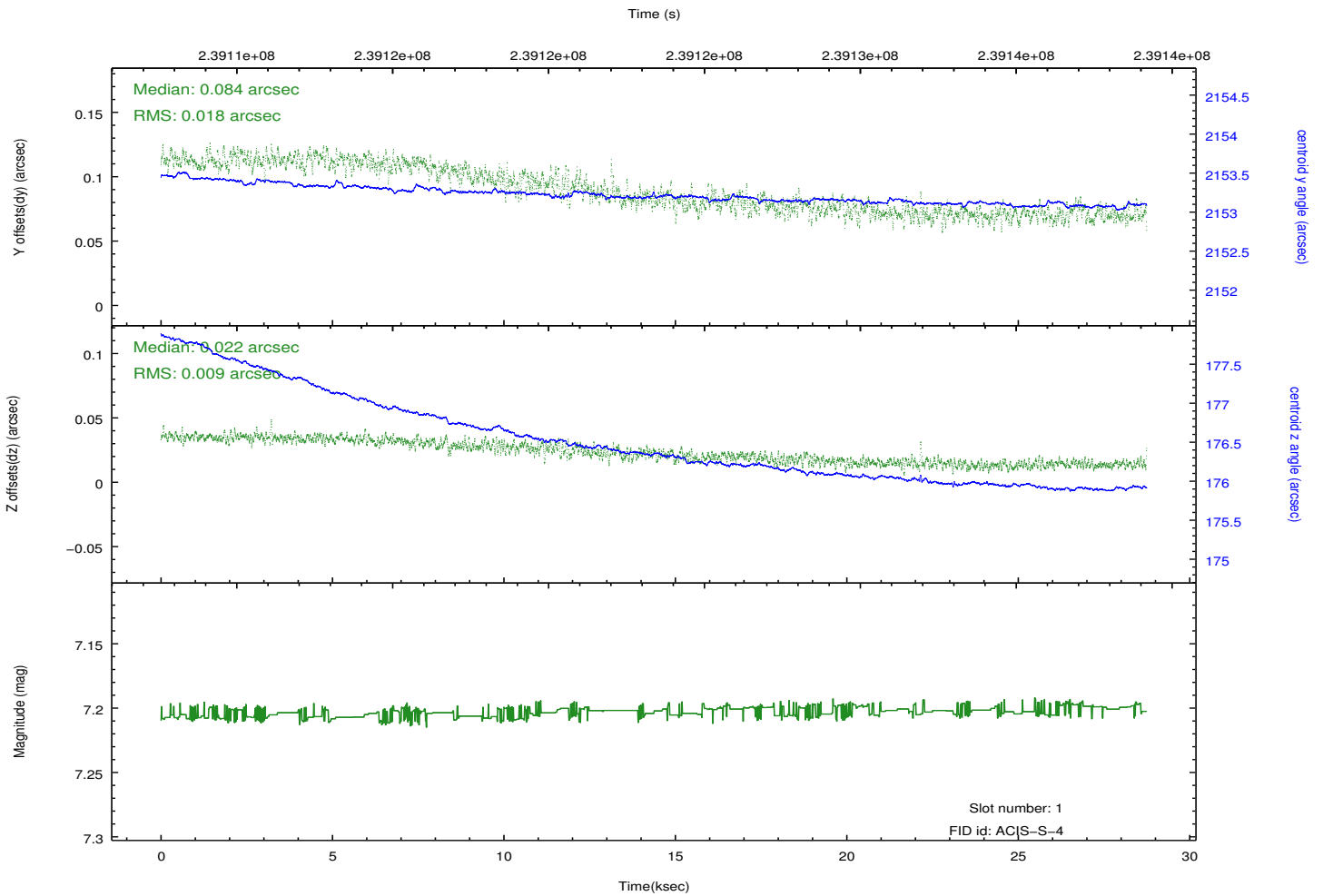
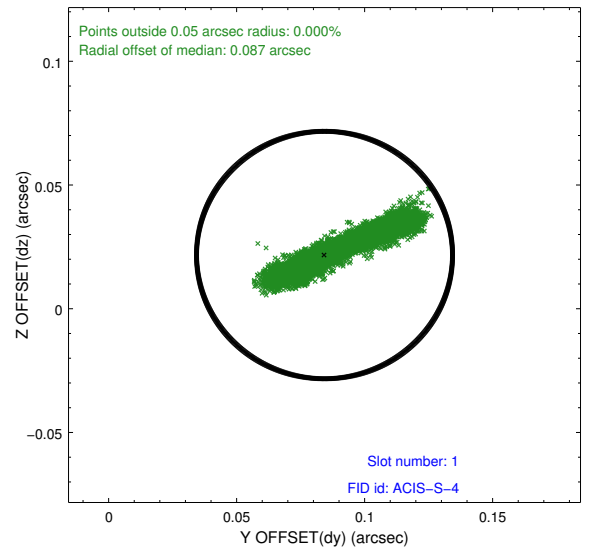
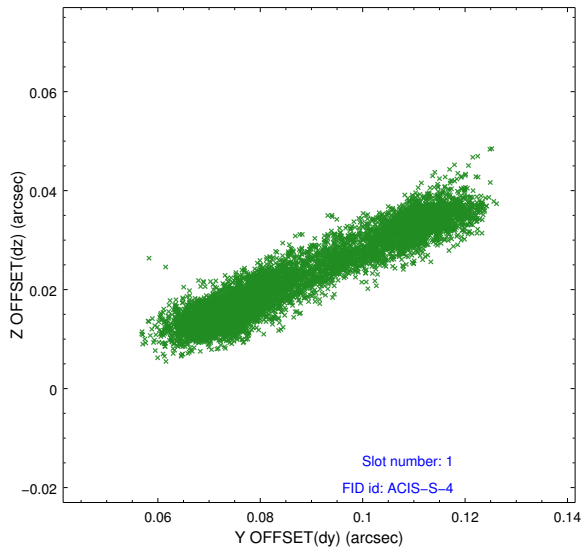


2.5 FID Slots

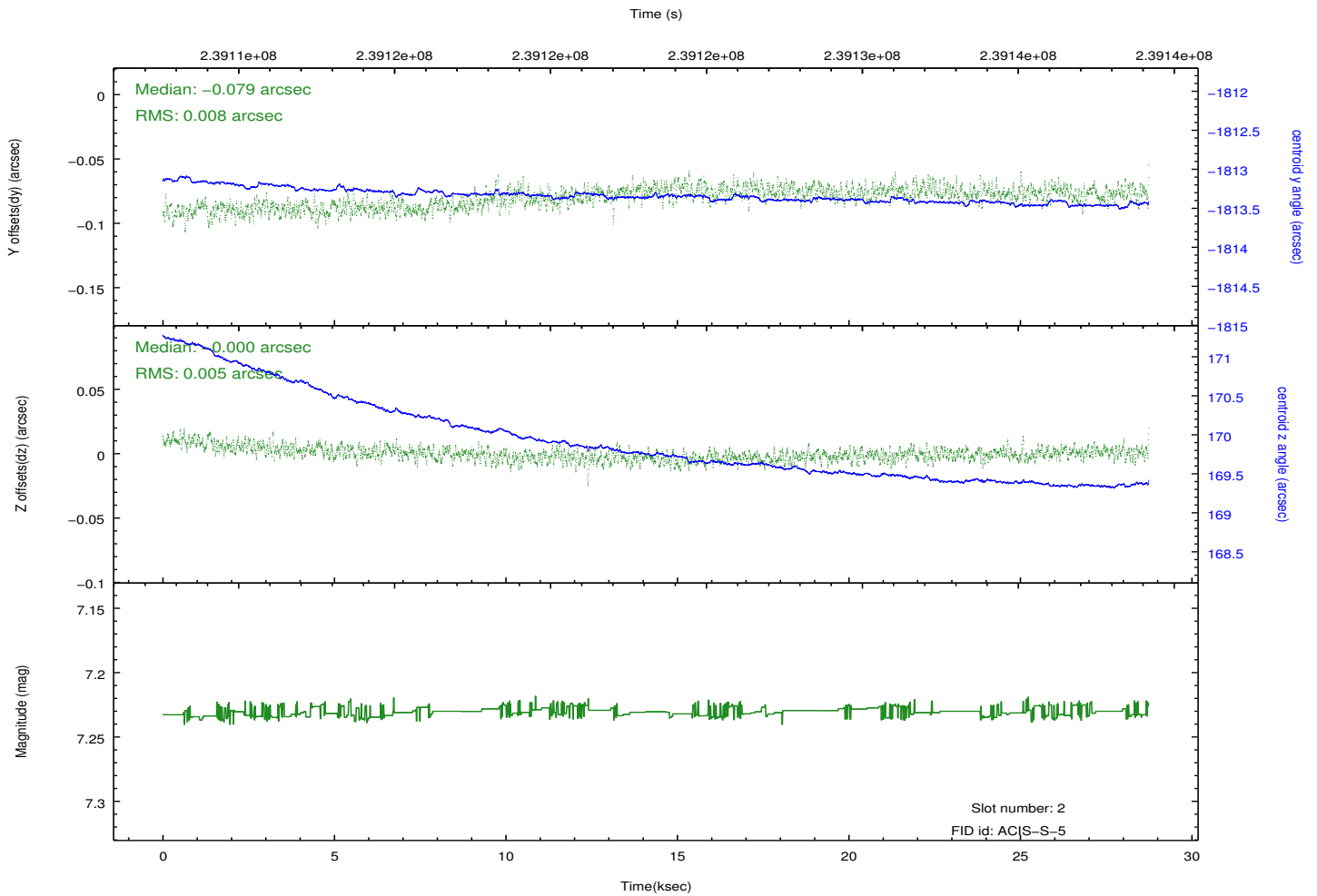
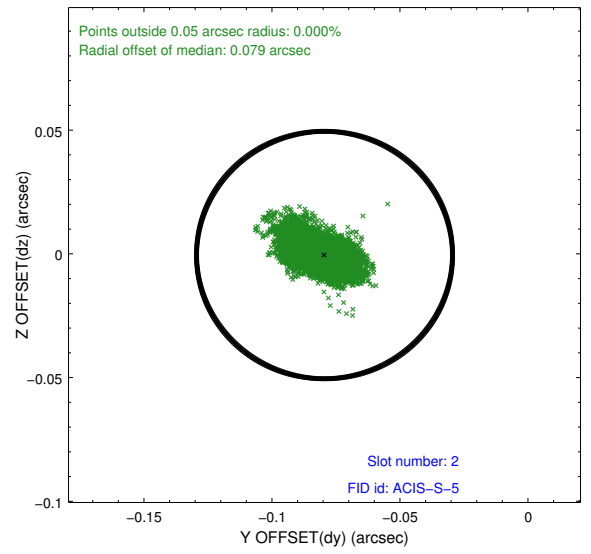
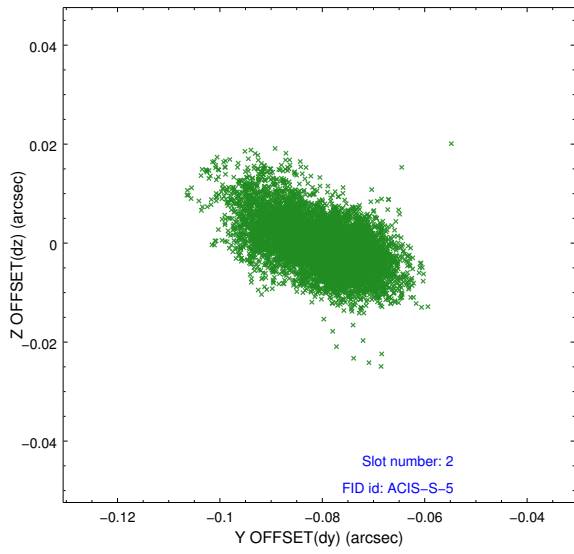
2.5.1 Slot 0



2.5.2 Slot 1



2.5.3 Slot 2



A Summary

A.1 Status

V&V Scientist	Beth Sundheim
V&V Date (YYYY-MM-DD)	2013.01.23
V&V Edition	1
V&V Disposition and Status	OK
V&V Charge Time	29.78804

A.2 Comments

Charge time for this observation remains at previous value of 29.78804 ksec.