

V&V Reference Report

L2 ASCDS Version : 8.5.1.1

Observation 6364 - L2 Version 3
Chandra X-Ray Center

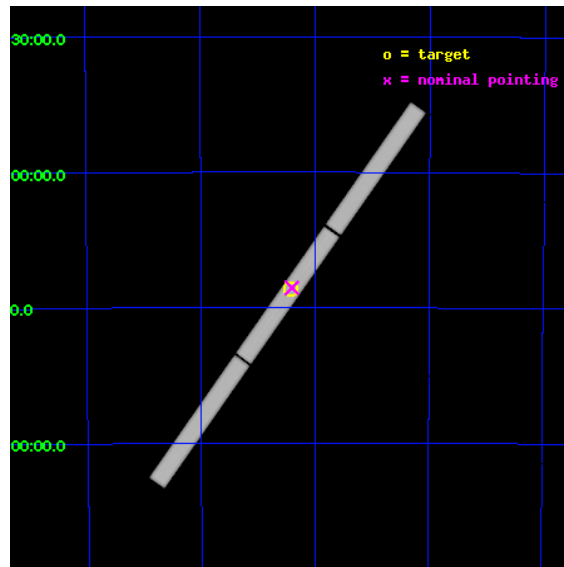
L2 Processing Date : Dec 28 2012

Contents

1	Front	2
2	OBI	3
2.1	OBI	3
2.1.1	Images	3
2.1.2	Parameters	4
2.1.3	Events	4
2.2	Compared Parameters	5
2.3	Aspect	6
2.4	Star Slots	9
2.4.1	Slot 3	9
2.4.2	Slot 4	10
2.4.3	Slot 5	11
2.4.4	Slot 6	12
2.4.5	Slot 7	13
2.5	FID Slots	14
2.5.1	Slot 0	14
2.5.2	Slot 1	15
2.5.3	Slot 2	16
3	Gratings	17
3.1	LETG Arm	17
A	Summary	19
A.1	Status	19
A.2	Comments	19

1 Front

seq_num	500572	Sequence number
obs_id	6364	Observation id
title	Spectra of Neutron Stars with Strongly Magnetized Hydrogen Atmospheres	Proposal title
observer	Prof. Marten van Kerkwijk	Principal investigator
object	RX J0720.4-3125	Source name
ra_targ	110.104167	Observer's specified target RA [deg]
dec_targ	-31.430611	Observer's specified target Dec [deg]
ra_nom	110.10114589278	Nominal RA [deg]
dec_nom	-31.426730273328	Nominal Dec [deg]
roll_nom	125.13605689625	Nominal Roll [deg]
revision	3	Processing version of data
ontime	38871.333033592	[s]
livetime	38584.233989491	Ontime multiplied by DTCOR
l2events	2392527	Number of level 2 events

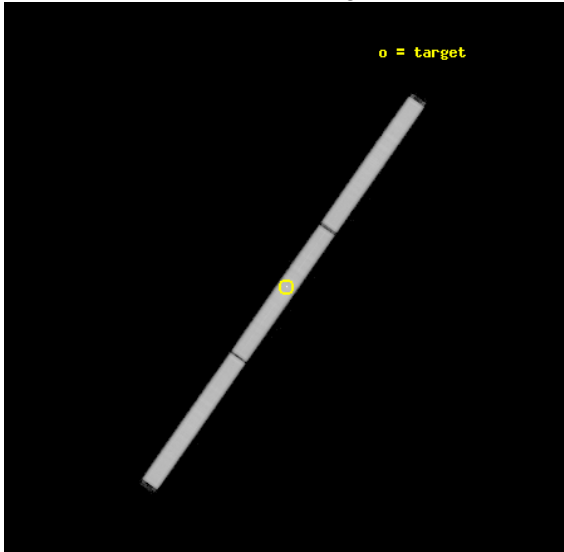


2 OBI

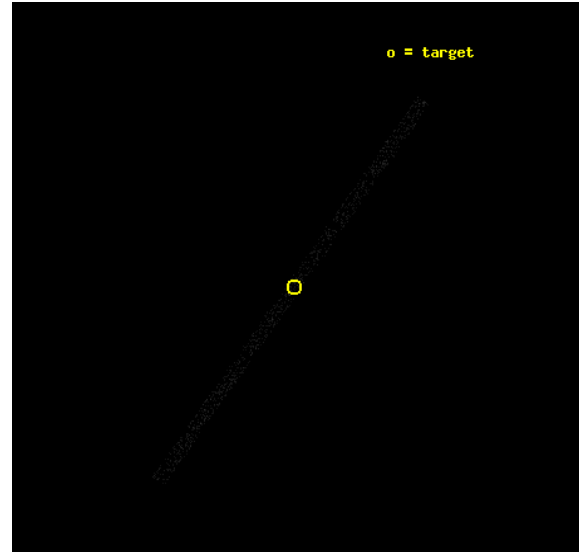
2.1 OBI

2.1.1 Images

Level 1 Image



Level 1 Bad Events



2.1.2 Parameters

obi_num	2	Obi number	sched_exp_time	38710.000000	[s] Scheduled observation exposure time
ascdsver	8.5.1.1	Processing system revision	ontime	38871.333033592	[s]
caldbver	4.5.5	 	l1events	3233457	Number of level 1 events
date	2012-12-28T00:51:16	Date and time of file creation			
revision	3	Processing version of data			

2.1.3 Events

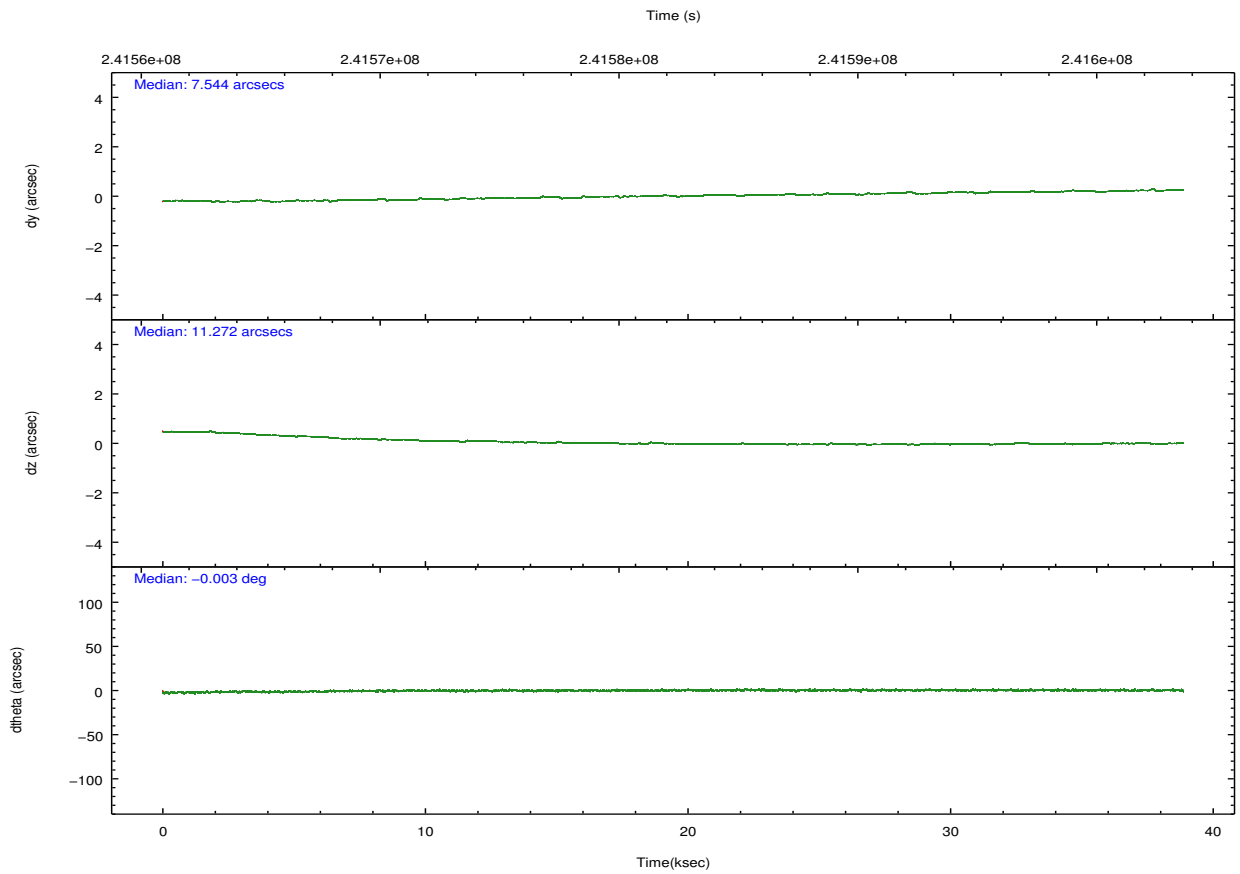
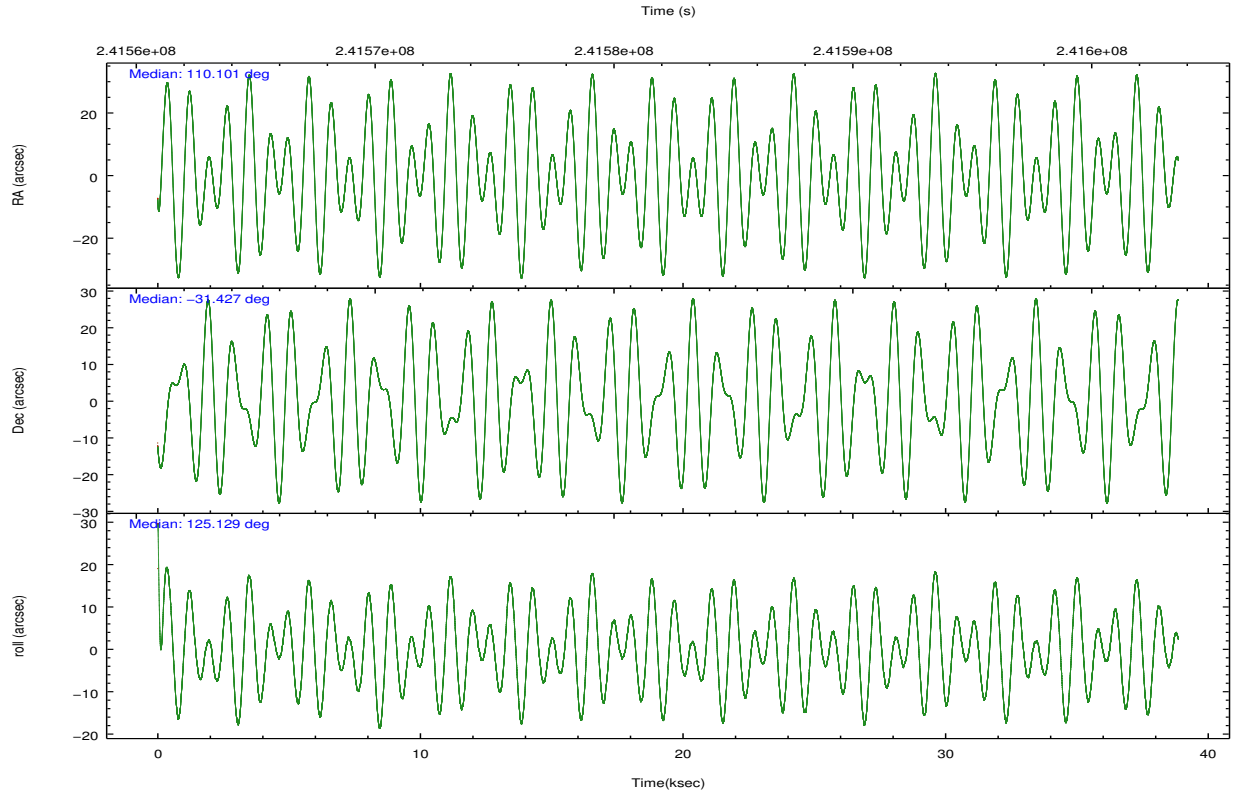
Level 1 Events

	segment 1	segment 2	segment 3
level 1 events	1095973	1052821	1084663
rejected events	18168	16427	17710
rejected %	1%	1%	1%

2.2 Compared Parameters

Parameter	Planned	Actual	Parameter	Planned	Actual
Instrument	HRC	HRC	Obspar format version number	7	7
Detector	HRC-S	HRC-S	Obspar file type	PREDICTED	ACTUAL
Grating	LETG	LETG	Obspar update status	NONE	UPDATED
Data mode	OBSERVING	OBSERVING			
Observation mode	POINTING	POINTING			
[deg] Pointing RA	110.132222	110.1011458927815			
[deg] Pointing Dec	-31.437428	-31.42673027332849			
[deg] Pointing Roll	125.084921	125.136056896249			
[mm] SIM focus pos	-1.429586	-1.428180813131781			
[mm] SIM defocus	0.1037507710433287	0.1051558262725154			
[mm] SIM translation stage pos	250.455976	250.466033080201			
[mm] SIM translation stage offset	0	-0.01005468664627074			
[s] Observation start time (MET)	241562989.184000	241562121.31343			
Observation start date	2005-08-27T20:48:45	2005-08-27T20:35:21			
[s] Observation end time (MET)	241601699.184000	241602632.39029			
Observation end date	2005-08-28T07:33:55	2005-08-28T07:50:32			

2.3 Aspect

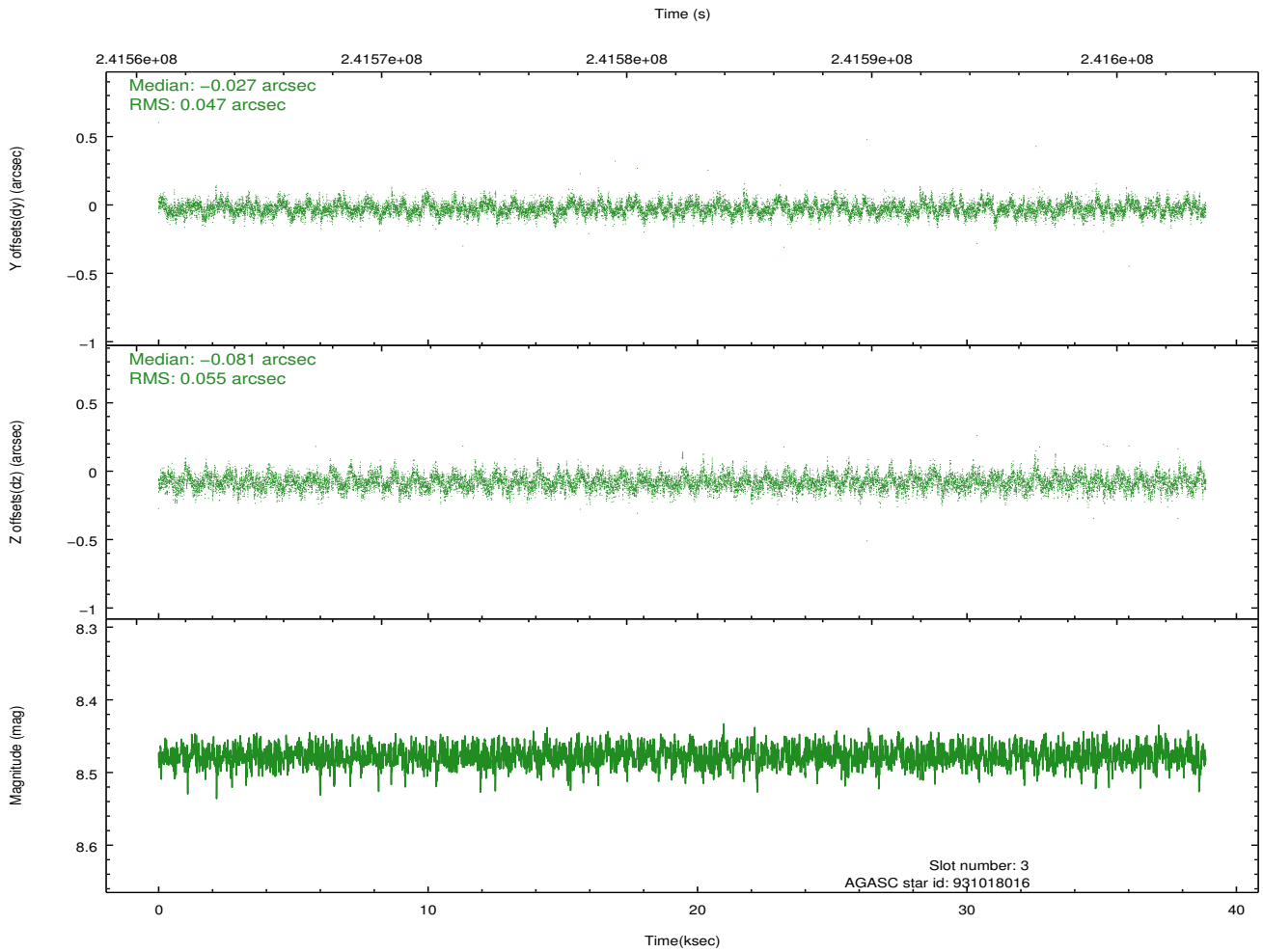
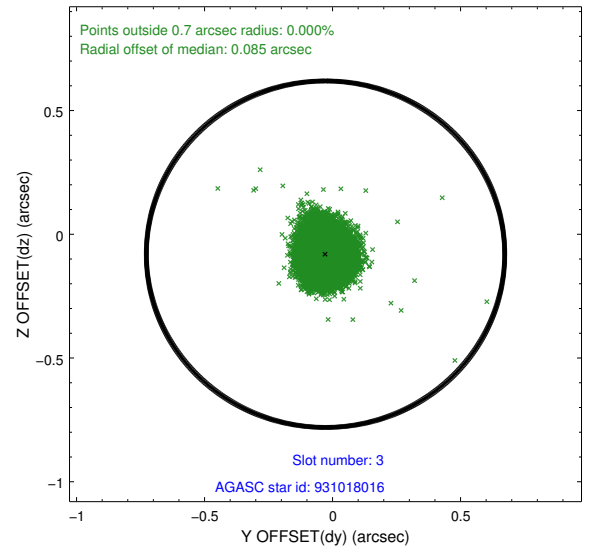
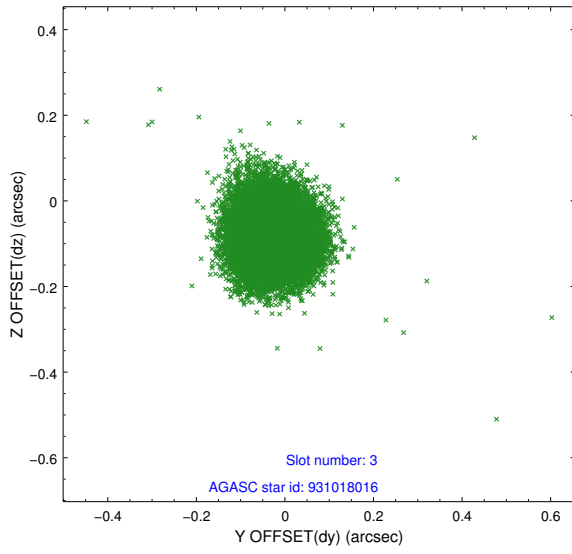


Slot Statistics

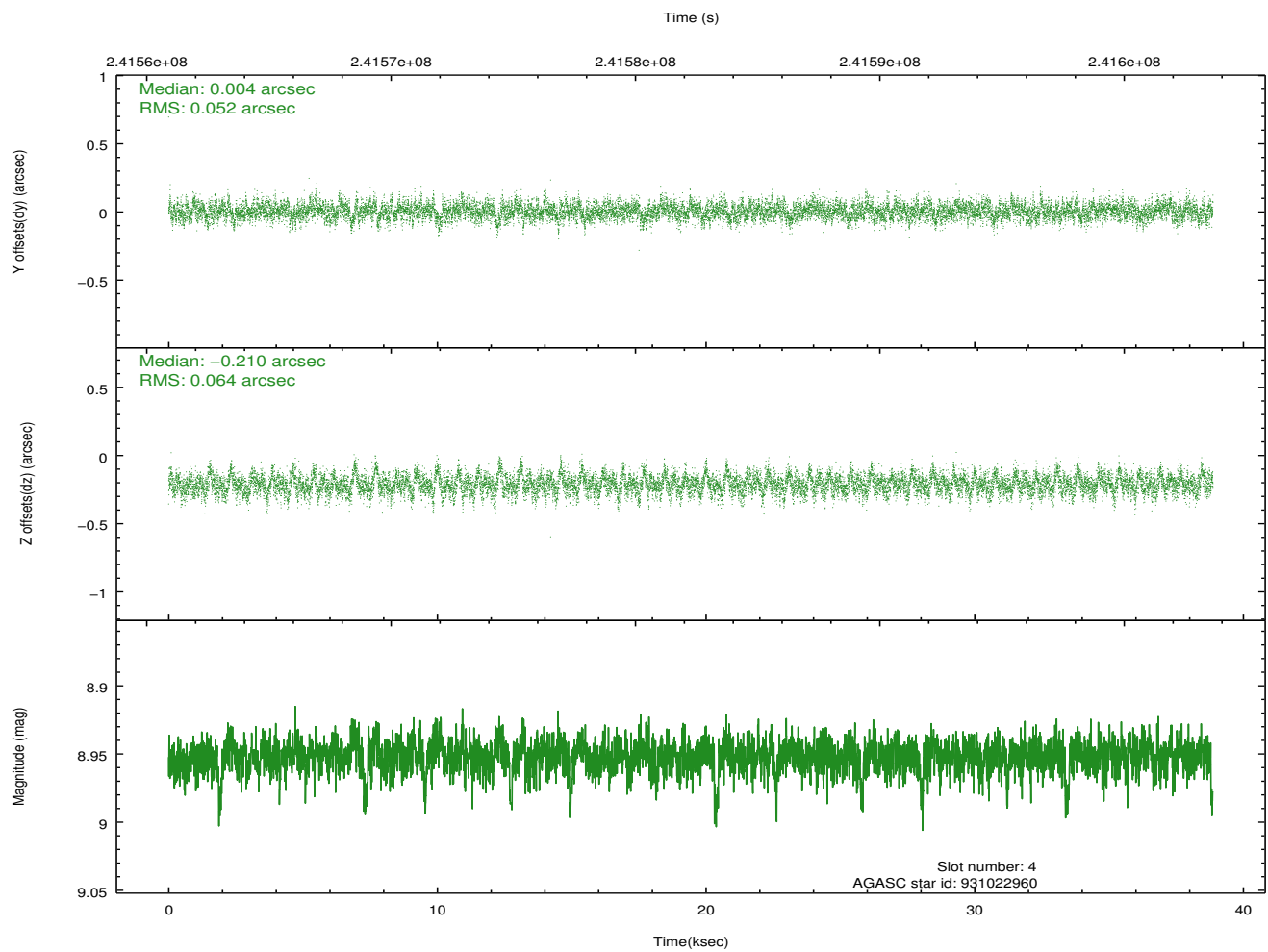
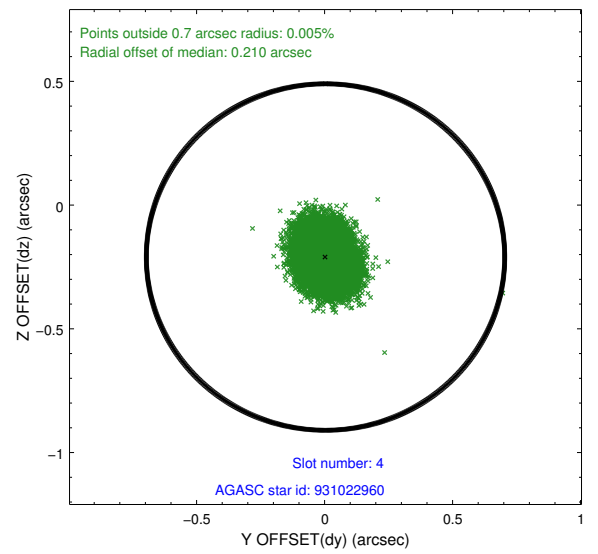
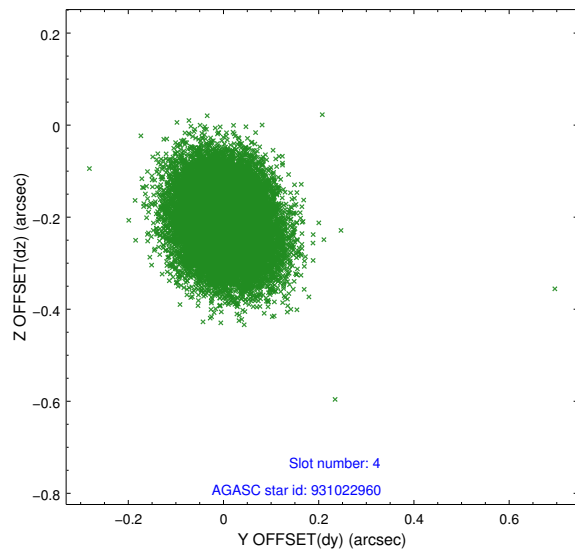
slot	status	id	mag	n_pts	med_dy	med_dz	dr1	dr2	ra	dec	mean_y	mean_z
0	FID	HRC-S-1	7.01	9481	0.123	-0.138	0.010	0.028	0.000000	0.000000	-1161.71	-460.05
1	FID	HRC-S-2	7.01	9481	0.168	-0.114	0.006	0.010	0.000000	0.000000	1237.89	-452.71
2	FID	HRC-S-3	7.02	9482	0.099	-0.050	0.010	0.031	0.000000	0.000000	-1164.33	569.51
3	GUIDE	931018016	8.48	18961	-0.027	-0.081	0.076	0.123	109.684535	-31.226562	1411.21	693.33
4	GUIDE	931022960	8.95	18947	0.004	-0.210	0.087	0.144	109.733092	-31.864448	-558.21	1883.39
5	GUIDE	931160352	8.64	18958	0.003	0.123	0.074	0.122	110.268138	-30.864891	1445.61	-1527.76
6	GUIDE	931163512	8.45	18876	0.004	0.044	0.087	0.141	110.894384	-31.299941	-948.63	-2198.38
7	GUIDE	931146200	8.97	18955	0.020	0.121	0.079	0.127	110.586199	-31.643611	-1409.15	-710.27

2.4 Star Slots

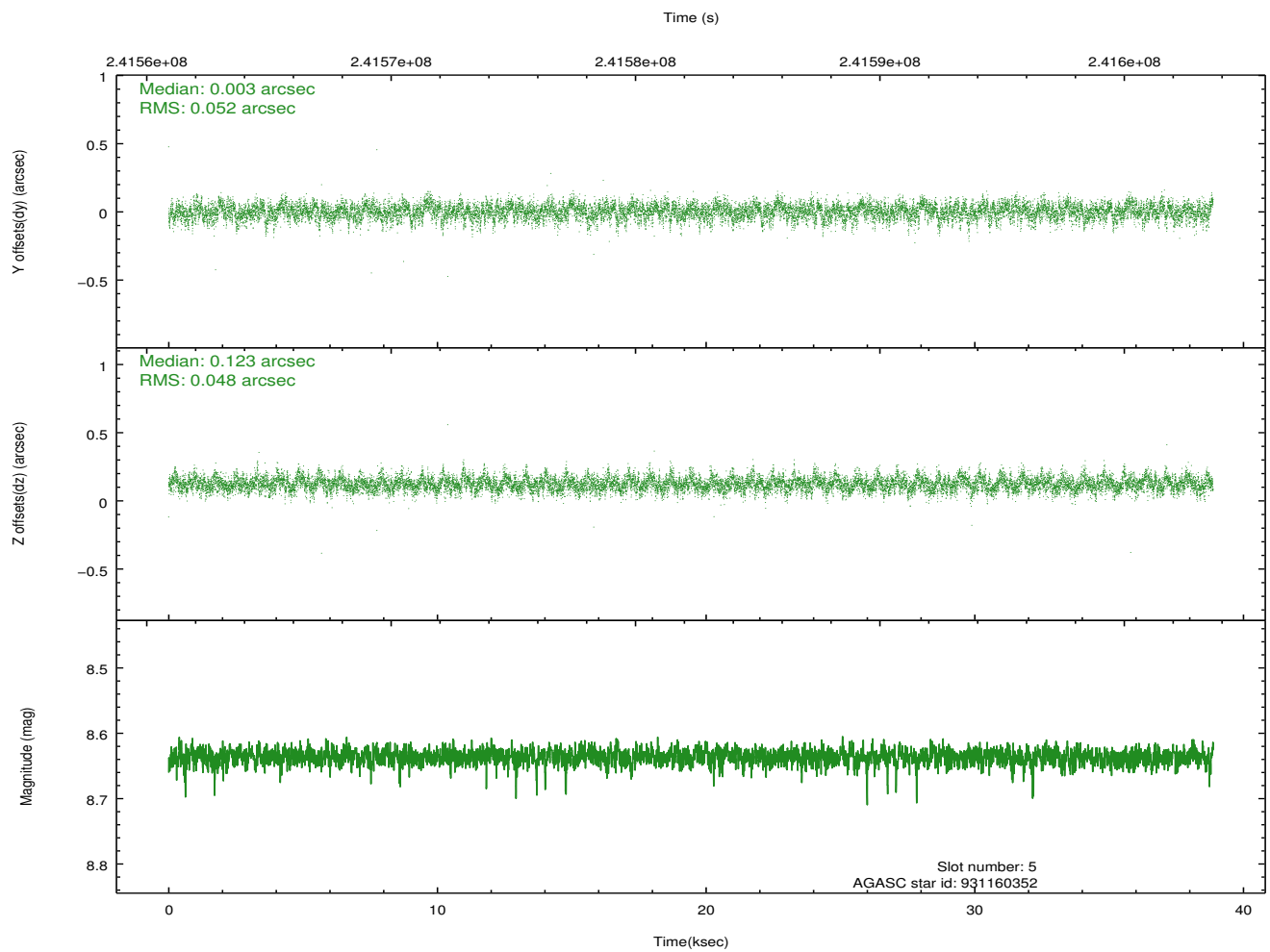
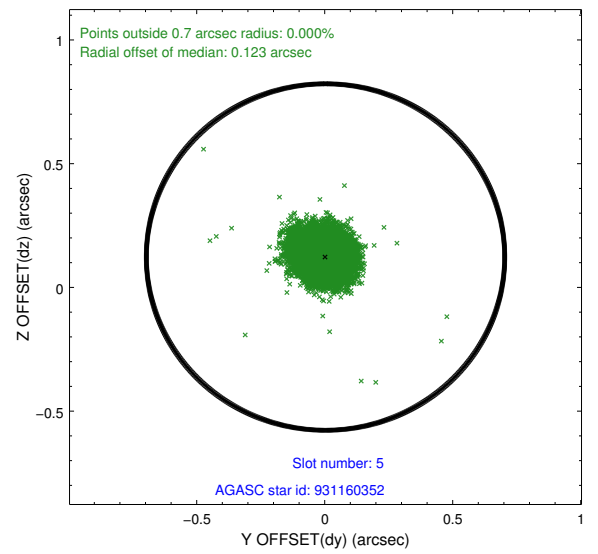
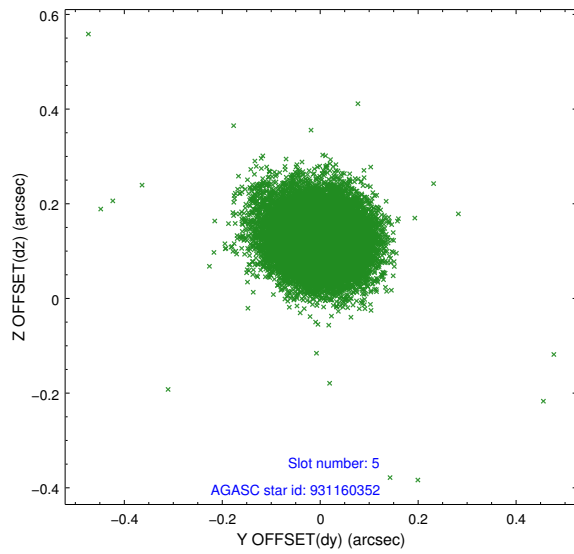
2.4.1 Slot 3



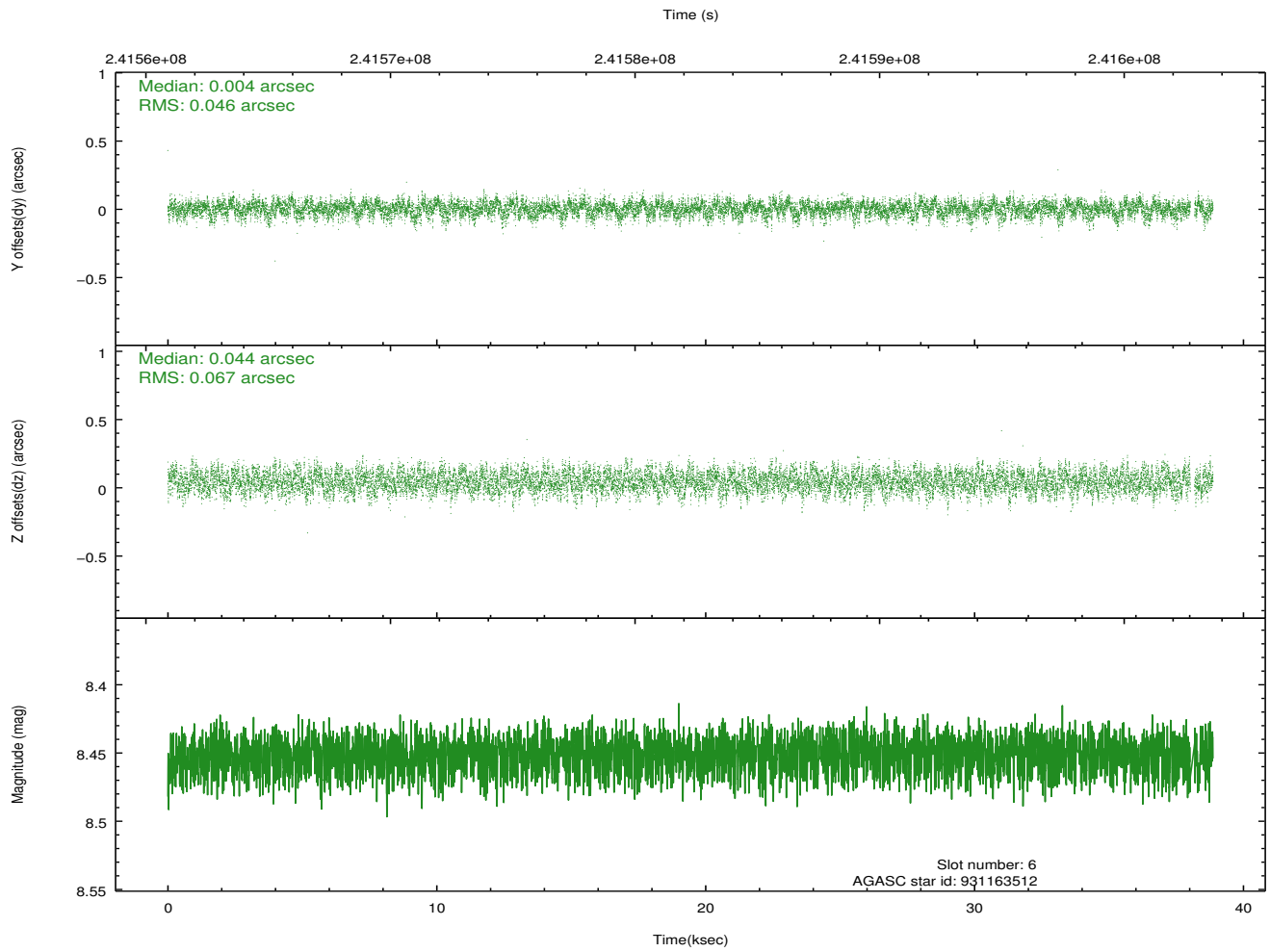
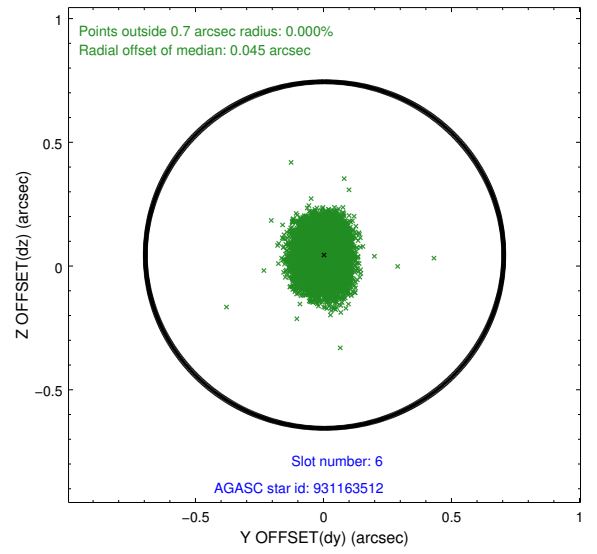
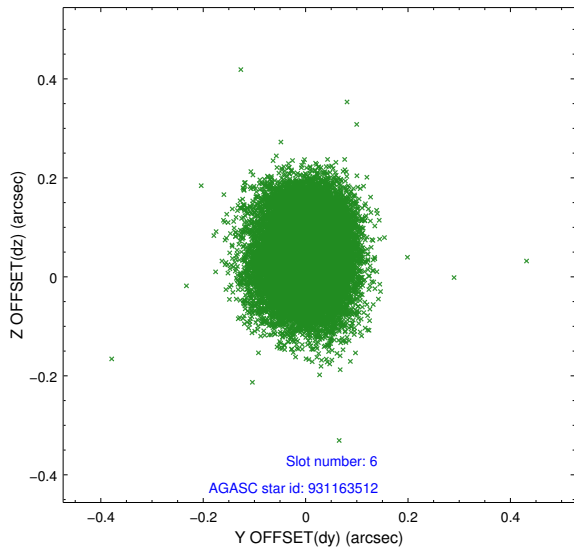
2.4.2 Slot 4



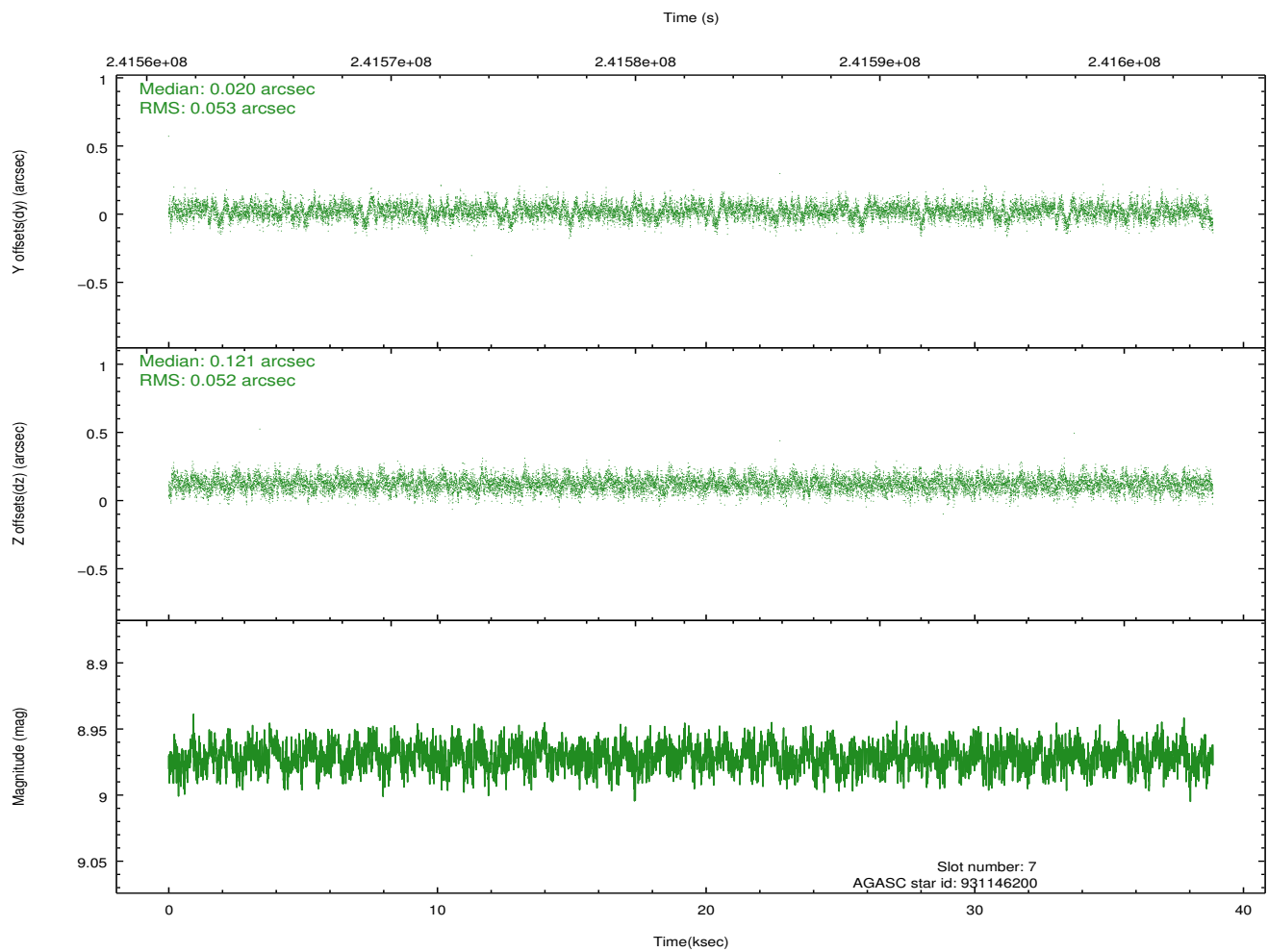
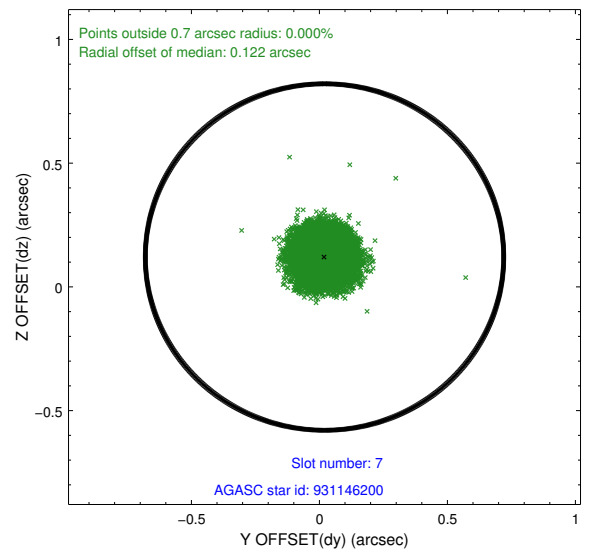
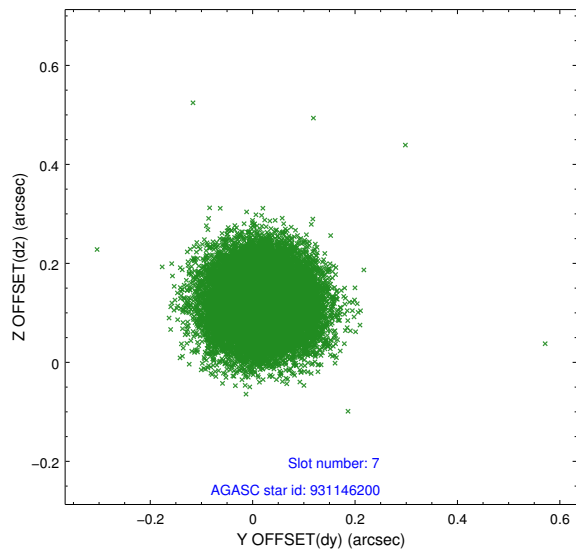
2.4.3 Slot 5



2.4.4 Slot 6

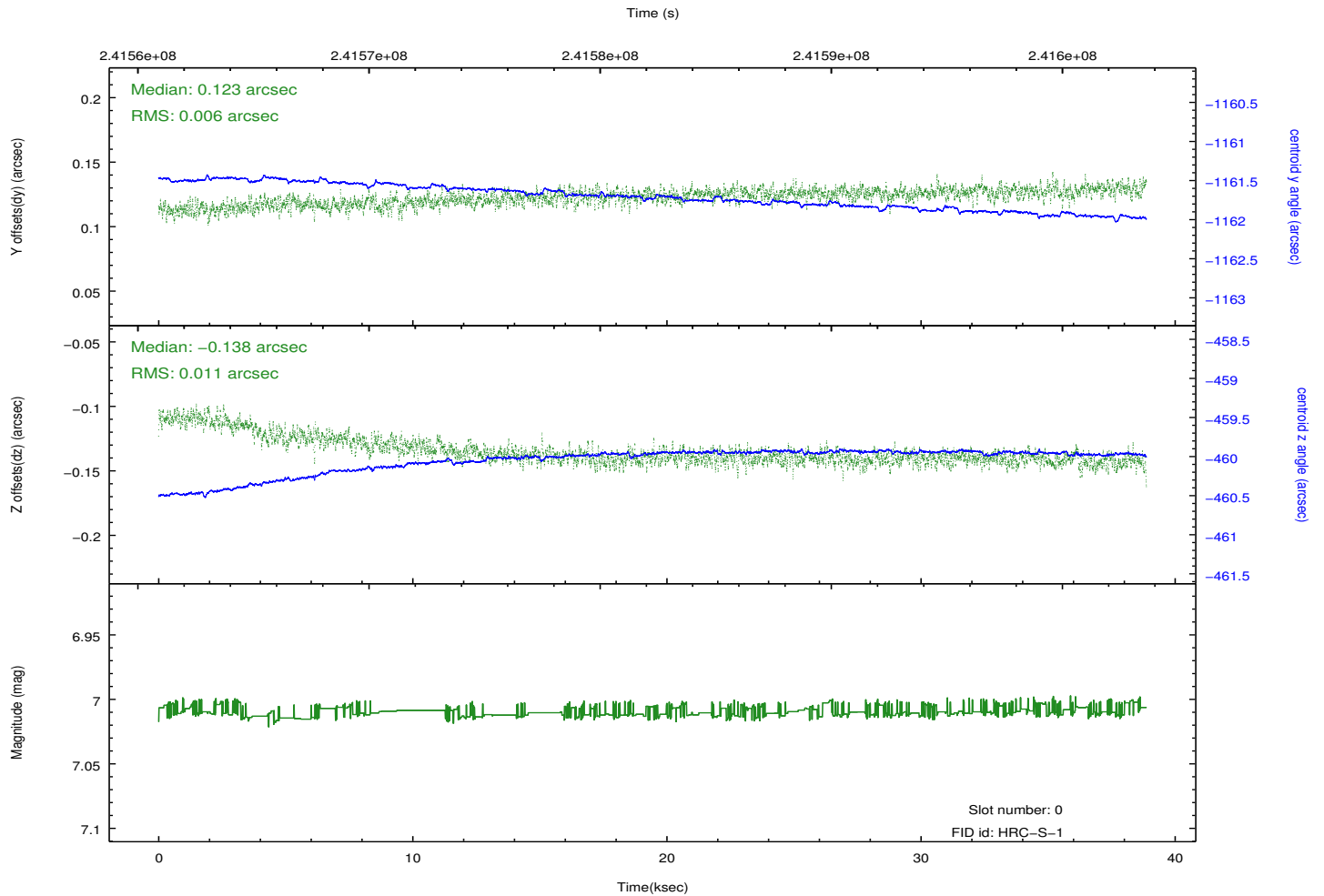
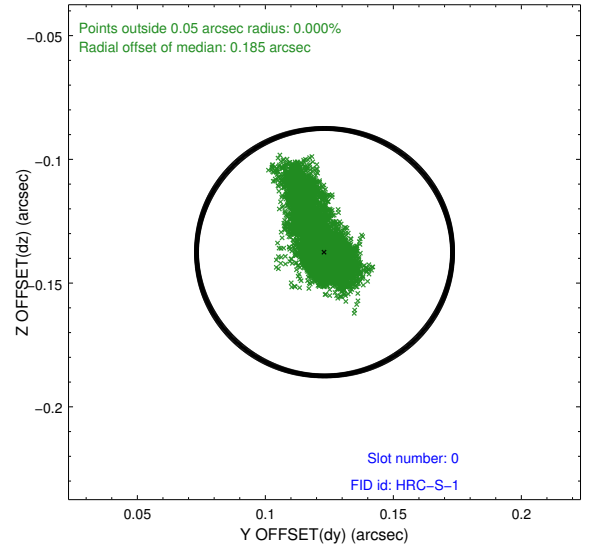
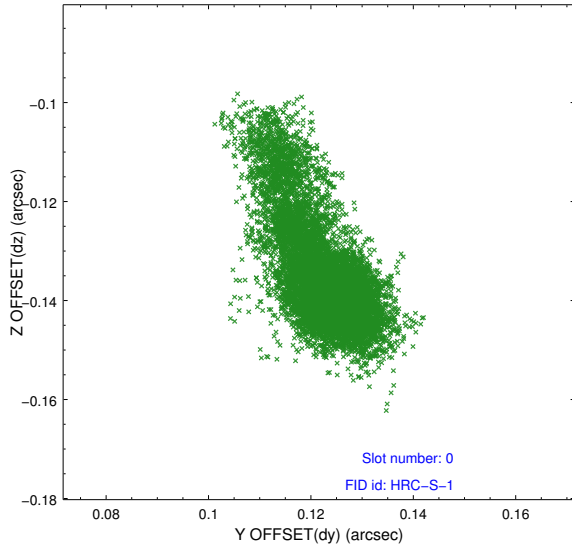


2.4.5 Slot 7

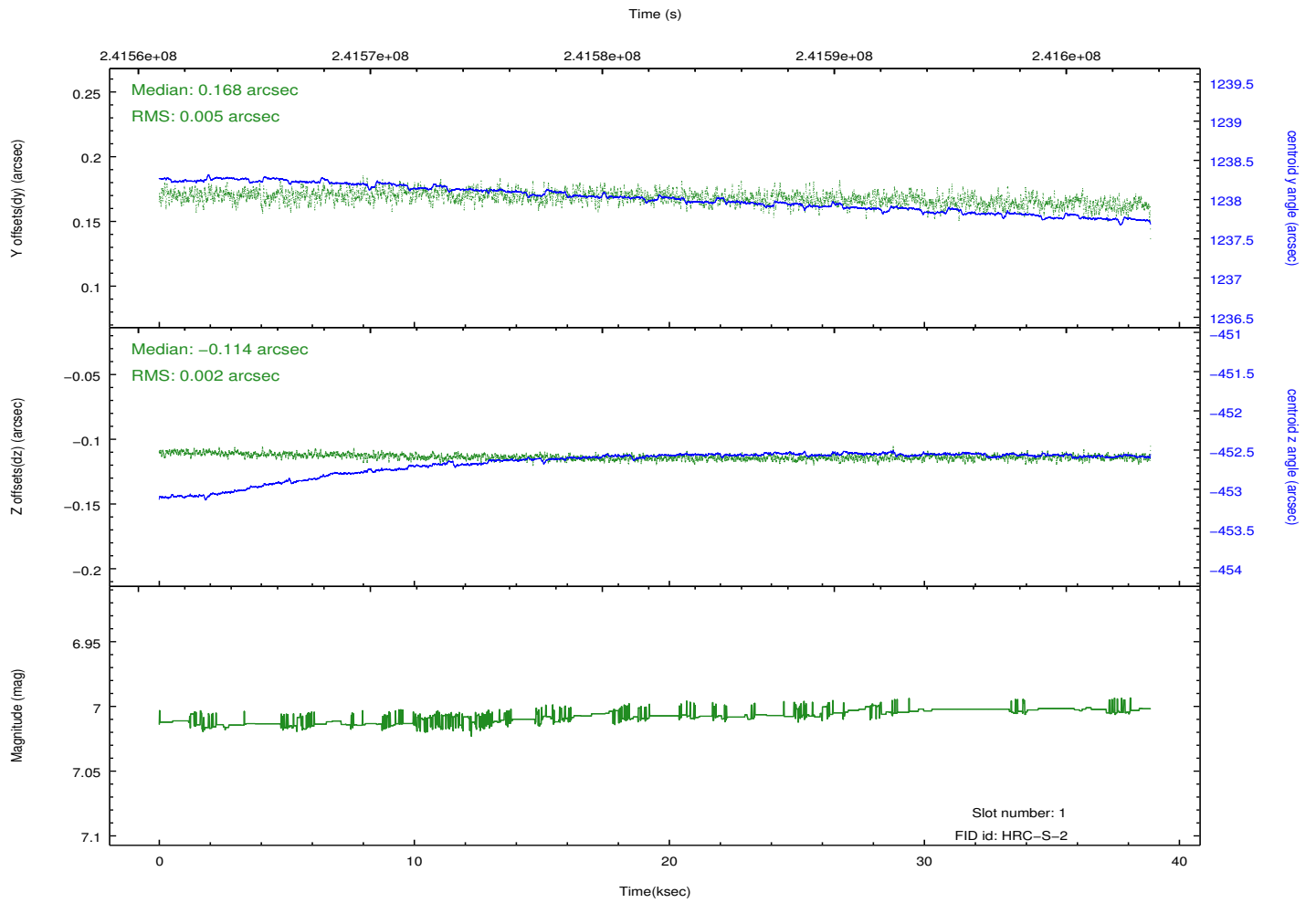
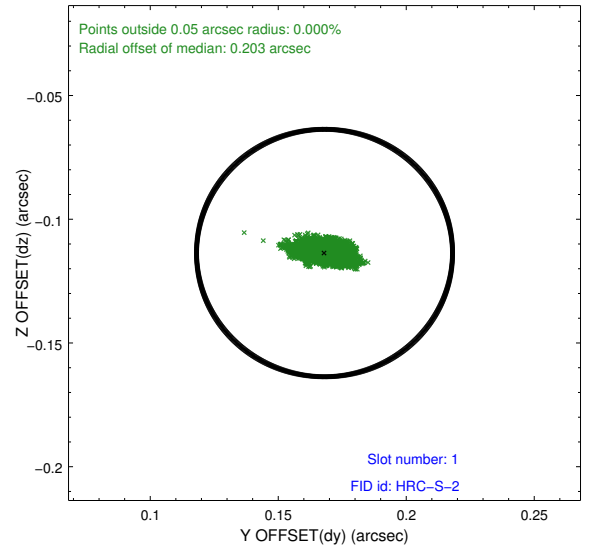
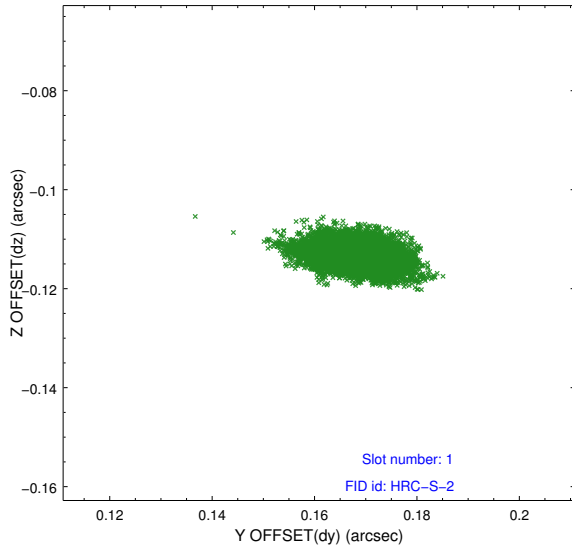


2.5 FID Slots

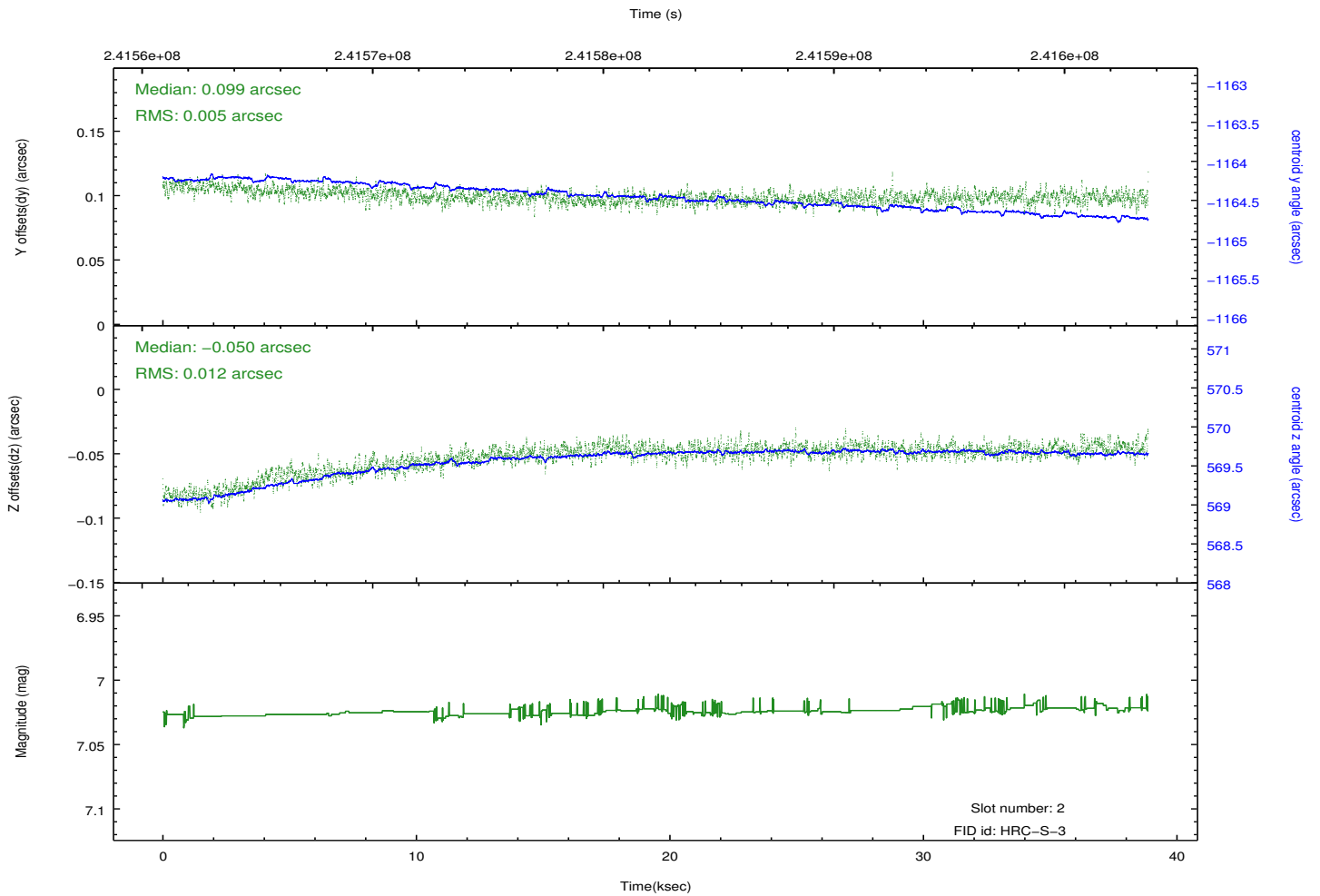
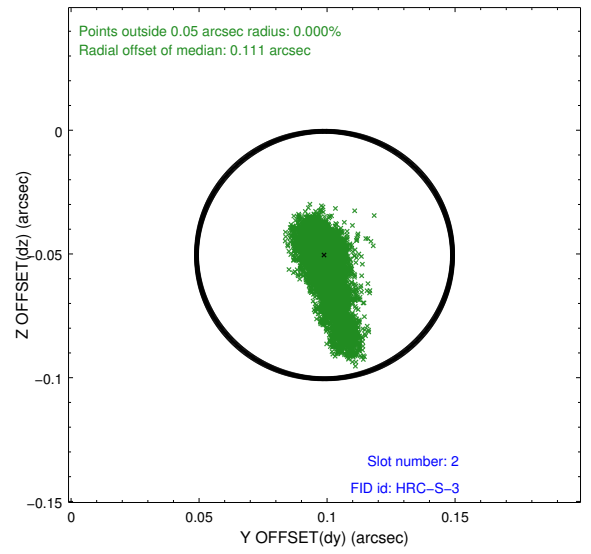
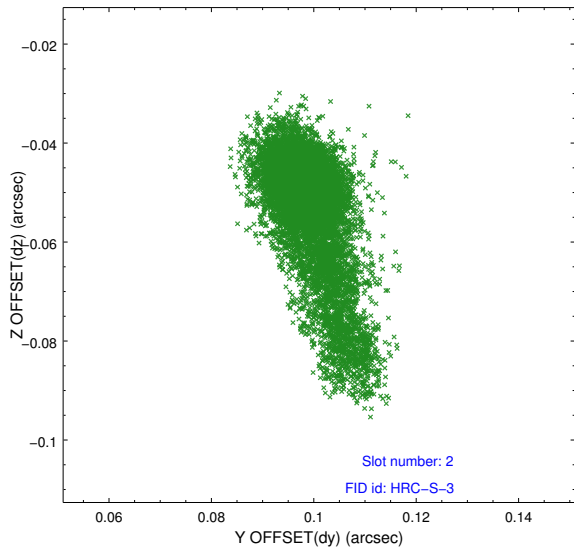
2.5.1 Slot 0



2.5.2 Slot 1

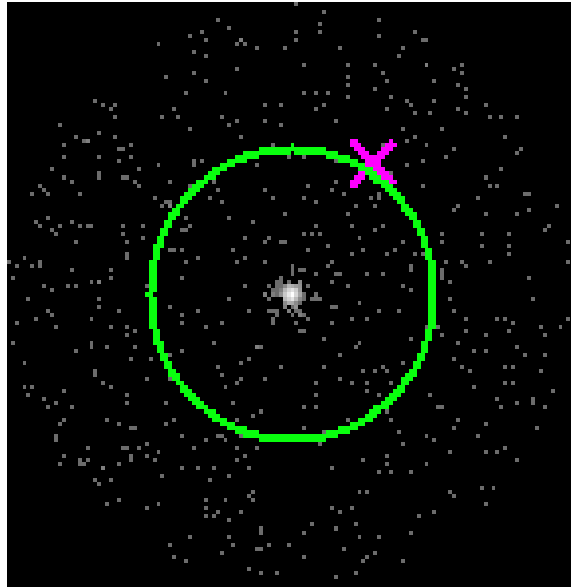


2.5.3 Slot 2



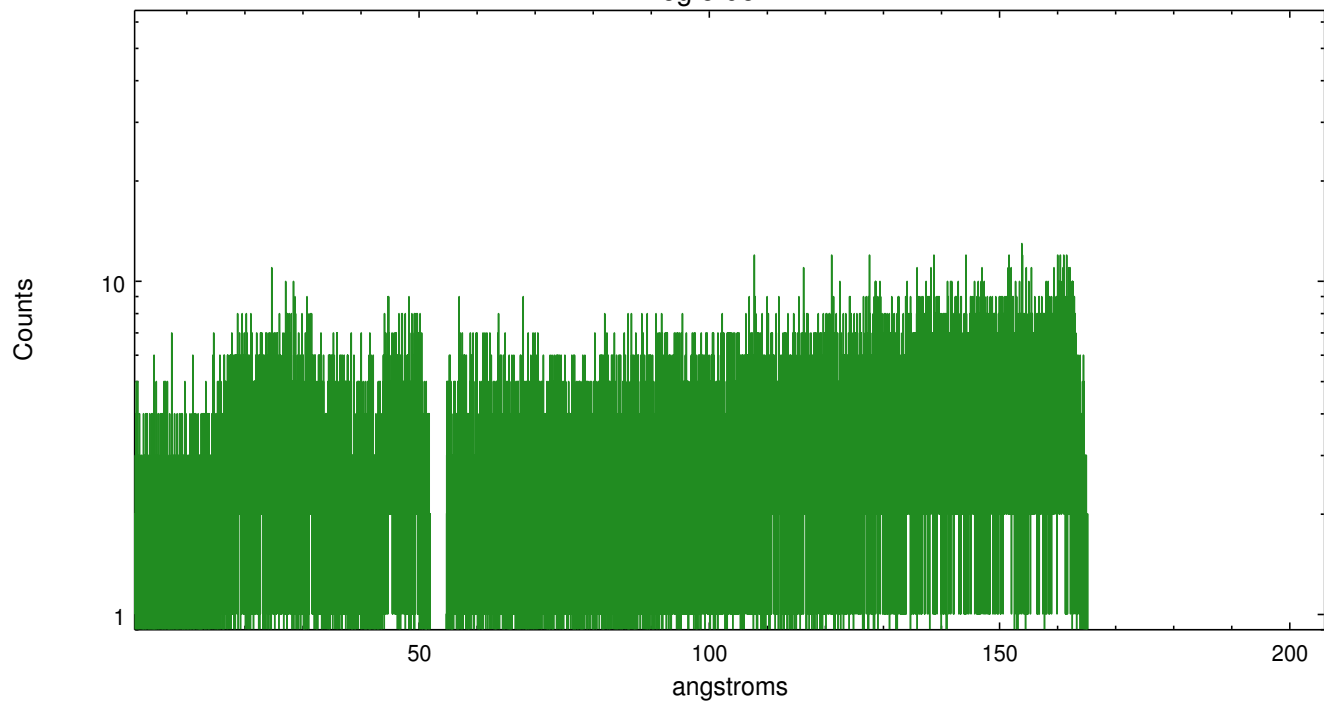
3 Gratings

3.1 LETG Arm

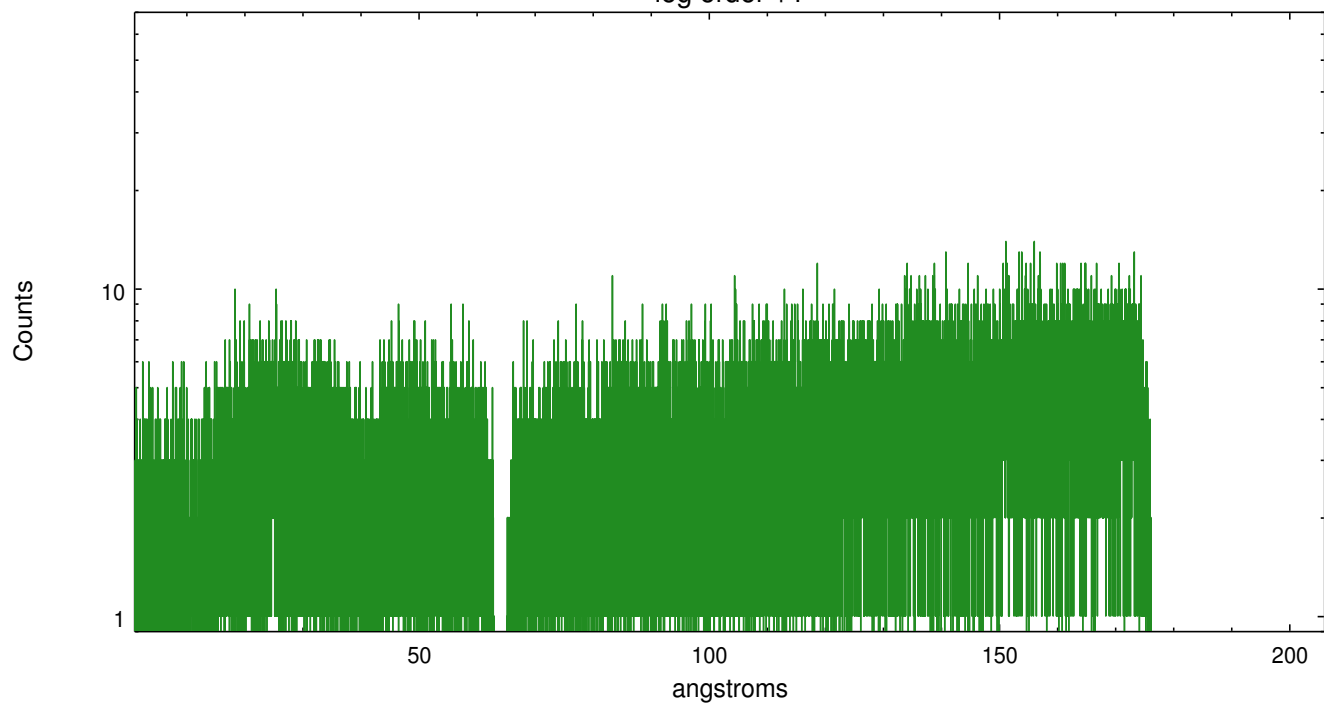


LETG Zero Order

leg order -1



leg order +1



A Summary

A.1 Status

V&V Scientist	Joy Nichols
V&V Date (YYYY-MM-DD)	2013.01.24
V&V Edition	1
V&V Disposition and Status	OK
V&V Charge Time	38.87133

A.2 Comments