

V&V Reference Report

L2 ASCDS Version : 8.5.1.1

Observation 6384 - L2 Version 4
Chandra X-Ray Center

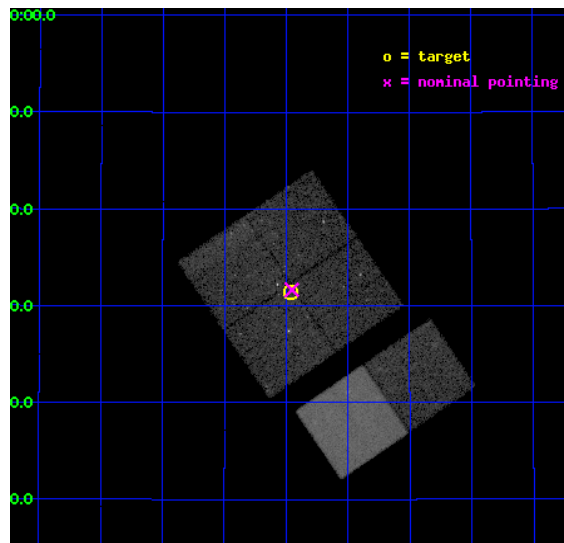
L2 Processing Date : Mar 8 2013

Contents

1	Front	2
2	OBI	3
2.1	OBI	3
2.1.1	Images	3
2.1.2	Bias	3
2.1.3	Parameters	4
2.1.4	Events	4
2.2	Compared Parameters	5
2.3	Aspect	6
2.4	Star Slots	9
2.4.1	Slot 3	9
2.4.2	Slot 4	10
2.4.3	Slot 5	11
2.4.4	Slot 6	12
2.4.5	Slot 7	13
2.5	FID Slots	14
2.5.1	Slot 0	14
2.5.2	Slot 1	15
2.5.3	Slot 2	16
A	Summary	17
A.1	Status	17
A.2	Comments	17

1 Front

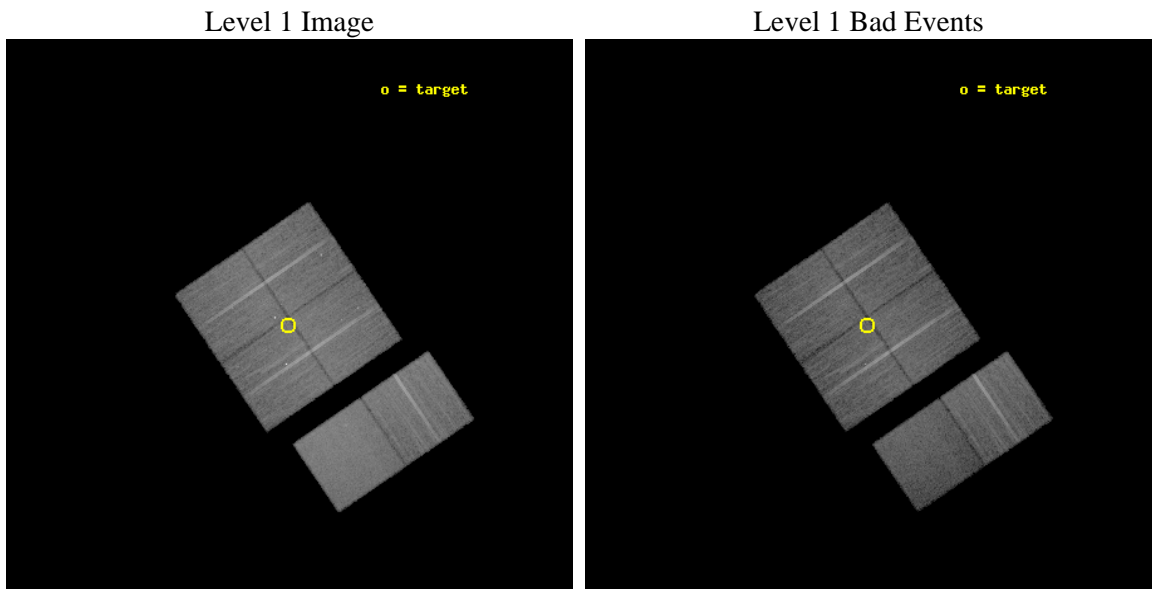
seq_num	600486	Sequence number
obs_id	6384	Observation id
title	The Chandra ACIS Survey of M33 (ChASem33): A Deep Survey of the Nearest Face-on Spiral Galaxy	Proposal title
observer	Dr Manami Sasaki	Principal investigator
object	M33 Field 5	Source name
dtcycle	0	
cycle	P	events from which exps? Prim/Second/Both
ra_targ	23.36625	Observer's specified target RA [deg]
dec_targ	30.523694	Observer's specified target Dec [deg]
ra_nom	23.363347028467	Nominal RA [deg]
dec_nom	30.527585067069	Nominal Dec [deg]
roll_nom	145.71016854184	Nominal Roll [deg]
revision	4	Processing version of data
ontime	22451.199916363	Sum of GTIs [s]
livetime	22166.909304532	Livetime [s]
ontime0	22451.199916363	Sum of GTIs [s]
ontime1	22451.199916363	Sum of GTIs [s]
ontime2	22451.199916363	Sum of GTIs [s]
ontime3	22451.199916363	Sum of GTIs [s]
ontime6	22451.199916363	Sum of GTIs [s]
ontime7	22451.199916363	Sum of GTIs [s]
l2events	133352	Number of level 2 events



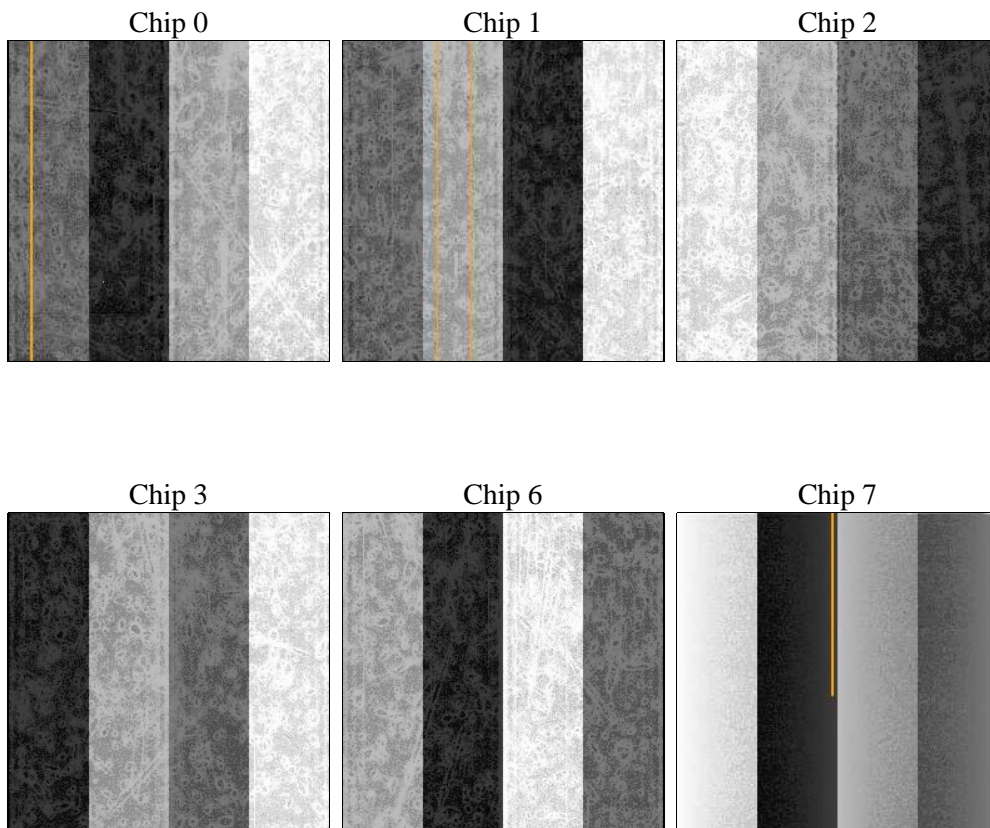
2 OBI

2.1 OBI

2.1.1 Images



2.1.2 Bias



2.1.3 Parameters

obi_num	0	Obi number	sched_exp_time	22400.000000	[s] Scheduled observation exposure time
ascdsver	8.5.1.1	Processing system revision	ontime	22451.199916363	Sum of GTIs [s]
caldsver	4.5.6	 	ontime0	22451.199916363	Sum of GTIs [s]
date	2013-03-07T23:04:52	Date and time of file creation	ontime1	22451.199916363	Sum of GTIs [s]
revision	4	Processing version of data	ontime2	22451.199916363	Sum of GTIs [s]
			ontime3	22451.199916363	Sum of GTIs [s]
			ontime6	22451.199916363	Sum of GTIs [s]
			ontime7	22451.199916363	Sum of GTIs [s]
			l1events	825943	Number of level 1 events

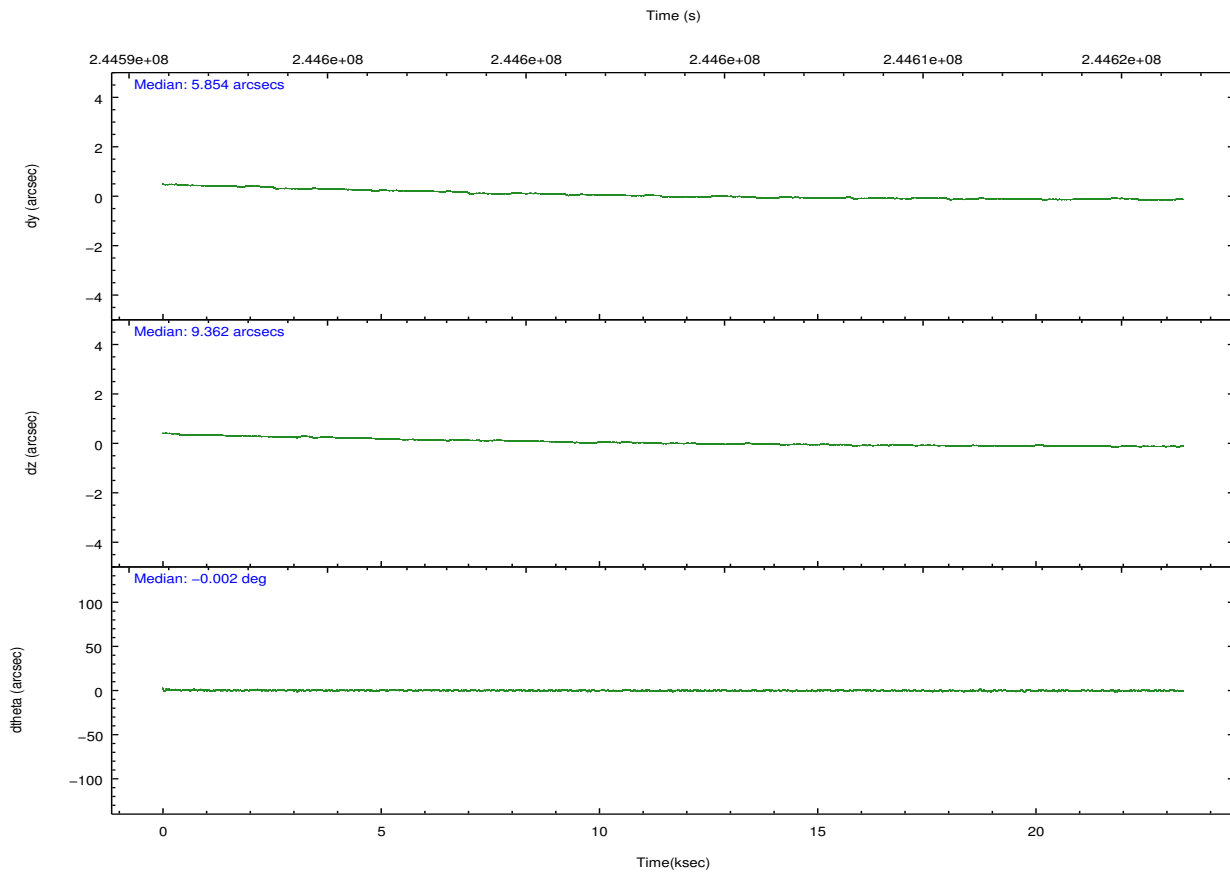
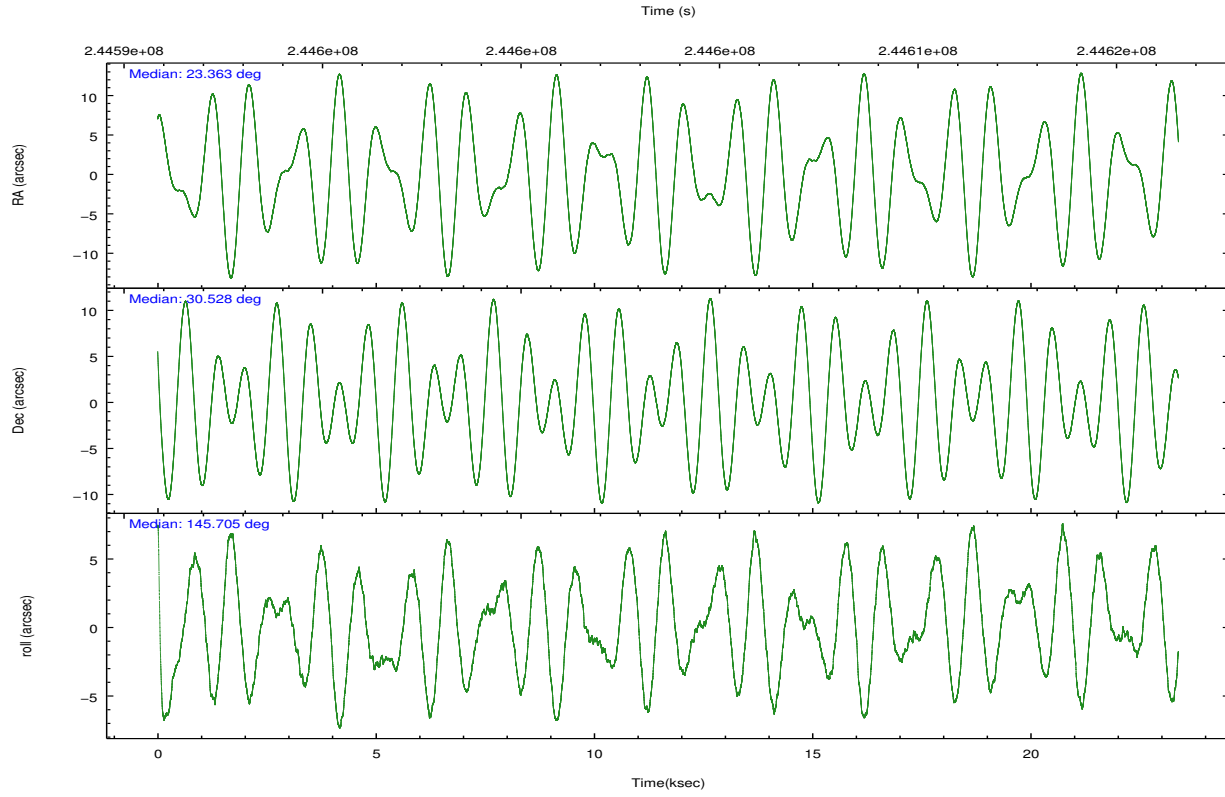
2.1.4 Events

	ccd 0	ccd 1	ccd 2	ccd 3	ccd 6	ccd 7		ccd 0	ccd 1	ccd 2	ccd 3	ccd 6	ccd 7
level 1 events	127340	129525	137846	135586	141727	153919	grade 0 events	5503	7647	5151	8460	4944	5684
rejected events	113012	111698	124267	117751	127314	85038		4%	5%	3%	6%	3%	3%
rejected %	88%	86%	90%	86%	89%	55%	grade 1 events	62	106	73	244	73	134
								0%	0%	0%	0%	0%	0%
							grade 2 events	3266	3646	3133	3270	3144	13637
								2%	2%	2%	2%	2%	8%
							grade 3 events	1610	1734	1458	1657	1550	6414
								1%	1%	1%	1%	1%	4%
							grade 4 events	1433	1761	1416	1626	1549	6404
								1%	1%	1%	1%	1%	4%
							grade 5 events	4733	5259	4357	5506	5772	16386
								3%	4%	3%	4%	4%	10%
							grade 6 events	2518	3043	2423	2827	3235	36758
								1%	2%	1%	2%	2%	23%
							grade 7 events	108215	106329	119835	111996	121460	68502
								84%	82%	86%	82%	85%	44%

2.2 Compared Parameters

Parameter	Planned	Actual	Parameter	Planned	Actual
Instrument	ACIS	ACIS	Obspar format version number	7	7
Detector	ACIS-012367	ACIS-012367	Obspar file type	PREDICTED	ACTUAL
Grating	NONE	NONE	Obspar update status	NONE	UPDATED
Data mode	VFAINT	VFAINT	Number of optional ACIS chips dropped	0	0
Observation mode	POINTING	POINTING	On-chip summing requested	N	N
[deg] Pointing RA	23.395045	23.36334702846721	Subarray requested	NONE	NONE
[deg] Pointing Dec	30.525656	30.52758506706895	Alternating exposures requested	N	N
[deg] Pointing Roll	145.485377	145.7101685418404	[s] Primary exposure time	0.000000	3.2
[mm] SIM focus pos	-0.782348	-0.7809083437167272			
[mm] SIM defocus	0	0.001439871863259334			
[mm] SIM translation stage pos	-233.592463	-233.5874344608287			
[mm] SIM translation stage offset	0	-0.005018542100998502			
[s] Observation start time (MET)	244592995.184000	244591587.87765			
Observation start date	2005-10-01T22:28:51	2005-10-01T22:06:27			
[s] Observation end time (MET)	244615395.184000	244616046.42878			
Observation end date	2005-10-02T04:42:11	2005-10-02T04:54:06			
Read mode	TIMED	TIMED			

2.3 Aspect

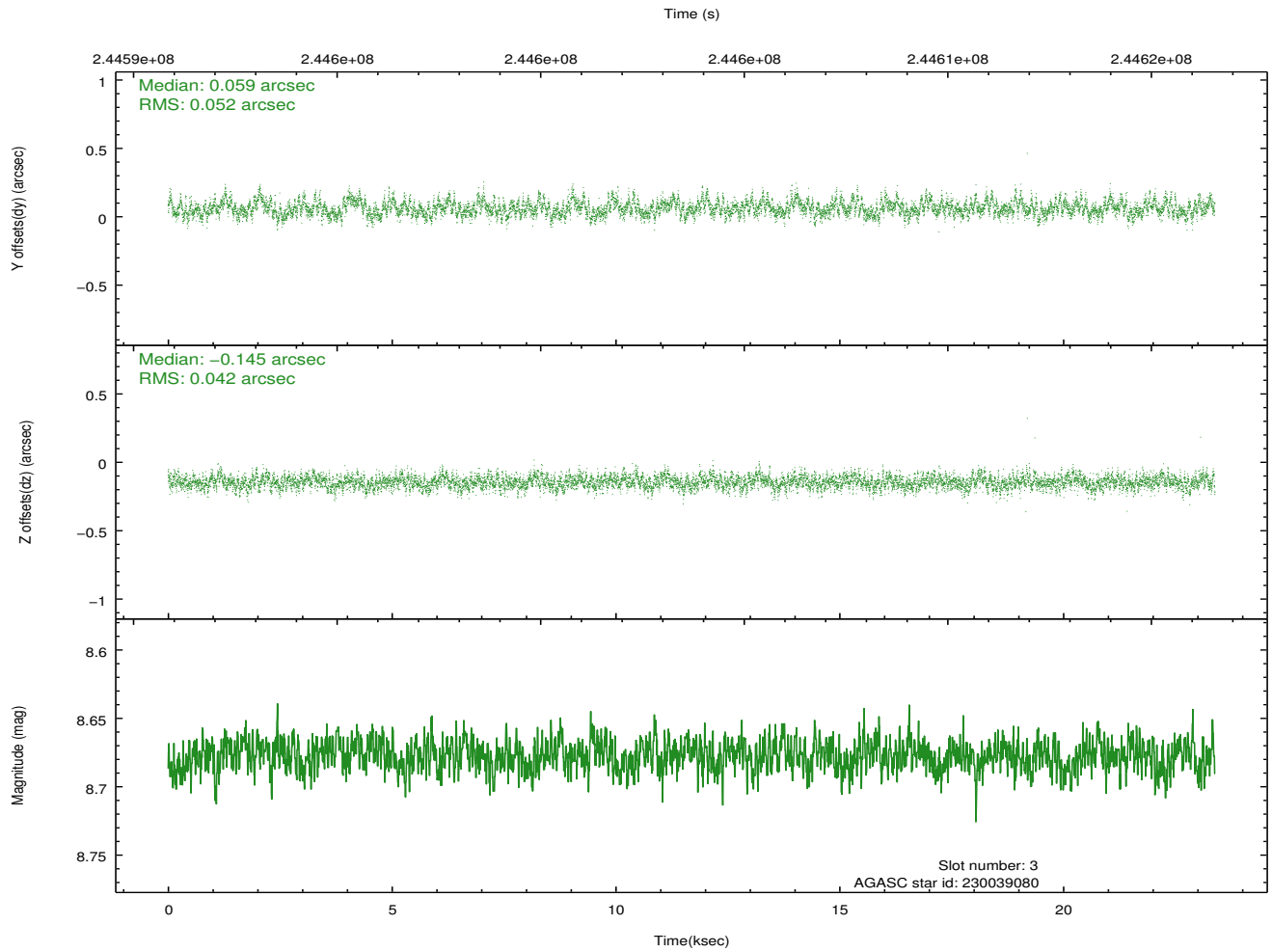
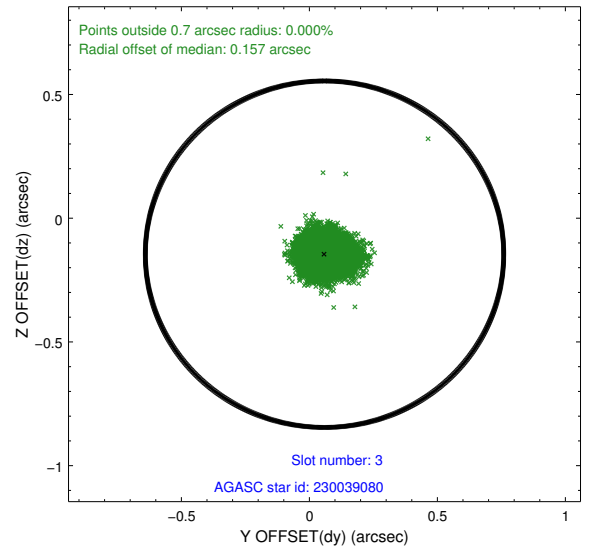
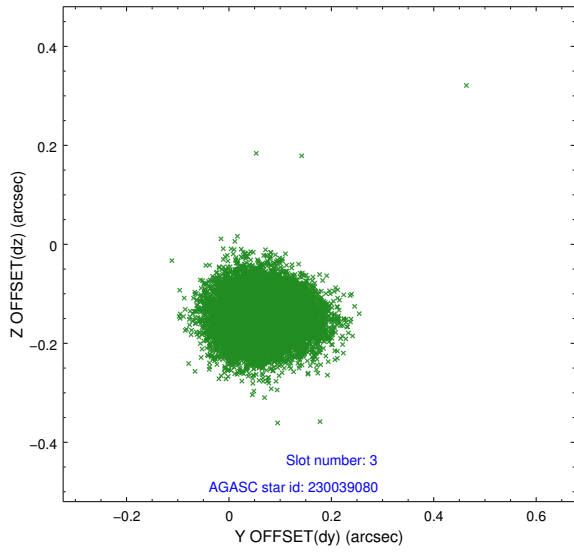


Slot Statistics

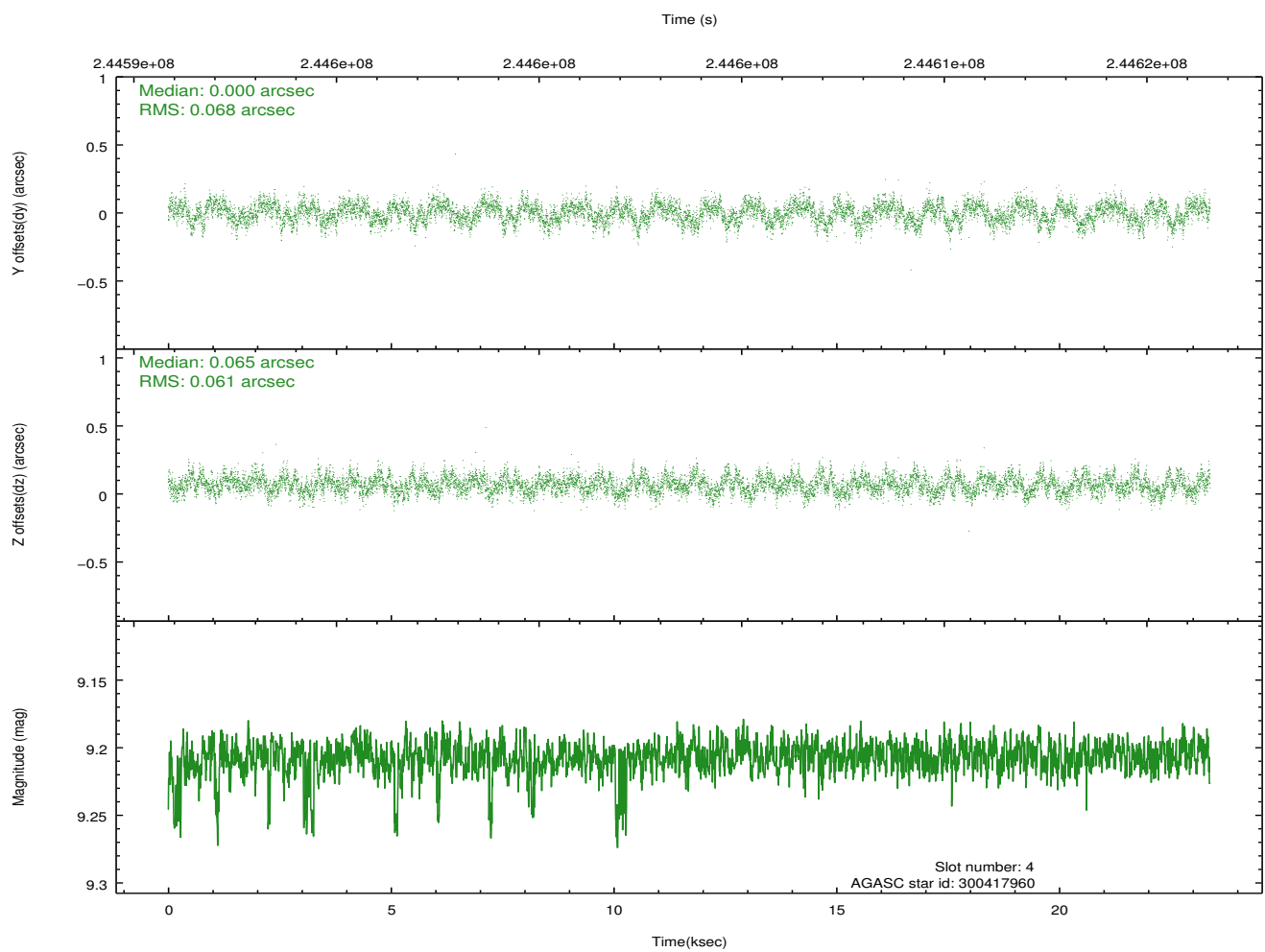
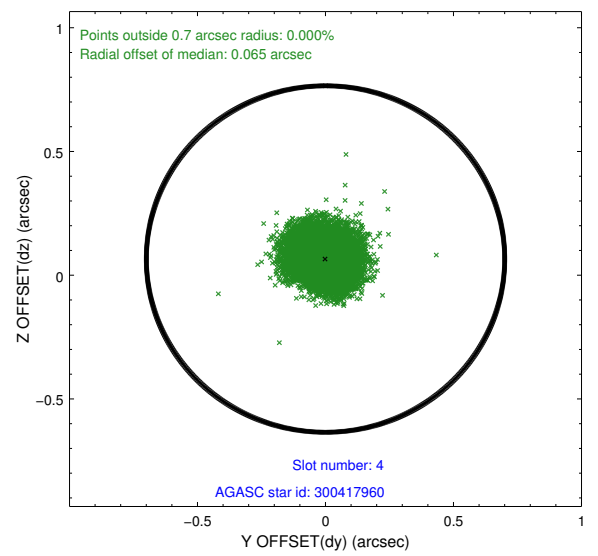
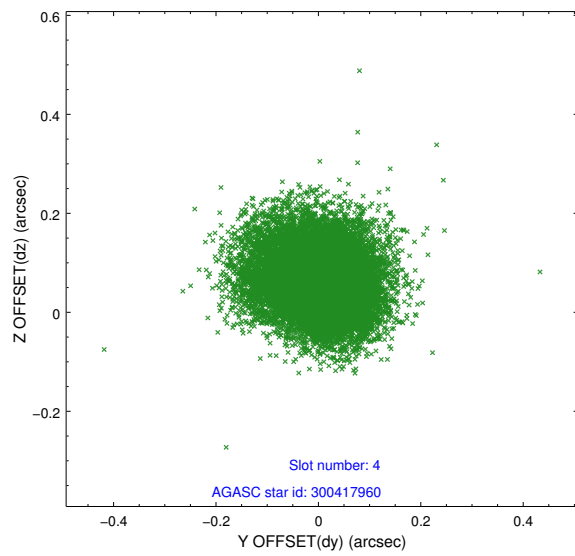
slot	status	id	mag	n_pts	med_dy	med_dz	dr1	dr2	ra	dec	mean_y	mean_z
0	FID	ACIS-I-1	7.25	5704	0.005	0.028	0.008	0.014	0.000000	0.000000	933.80	-832.83
1	FID	ACIS-I-5	7.23	5703	-0.157	0.030	0.007	0.012	0.000000	0.000000	-1814.40	1064.58
2	FID	ACIS-I-6	7.26	5702	0.060	0.013	0.010	0.016	0.000000	0.000000	399.24	1709.23
3	GUIDE	230039080	8.68	11408	0.059	-0.145	0.071	0.114	23.320866	29.887774	-1110.31	2023.24
4	GUIDE	300417960	9.21	11398	0.000	0.065	0.098	0.155	22.346894	30.364196	2361.91	2311.92
5	GUIDE	300553080	9.05	11405	-0.015	0.086	0.073	0.119	23.777101	30.773227	-467.05	-1405.25
6	GUIDE	300559160	9.40	11394	0.060	0.094	0.094	0.150	24.161026	30.632205	-1732.80	-1667.20
7	GUIDE	300559960	7.87	11407	-0.109	-0.101	0.056	0.090	22.944463	30.624765	1353.37	494.57

2.4 Star Slots

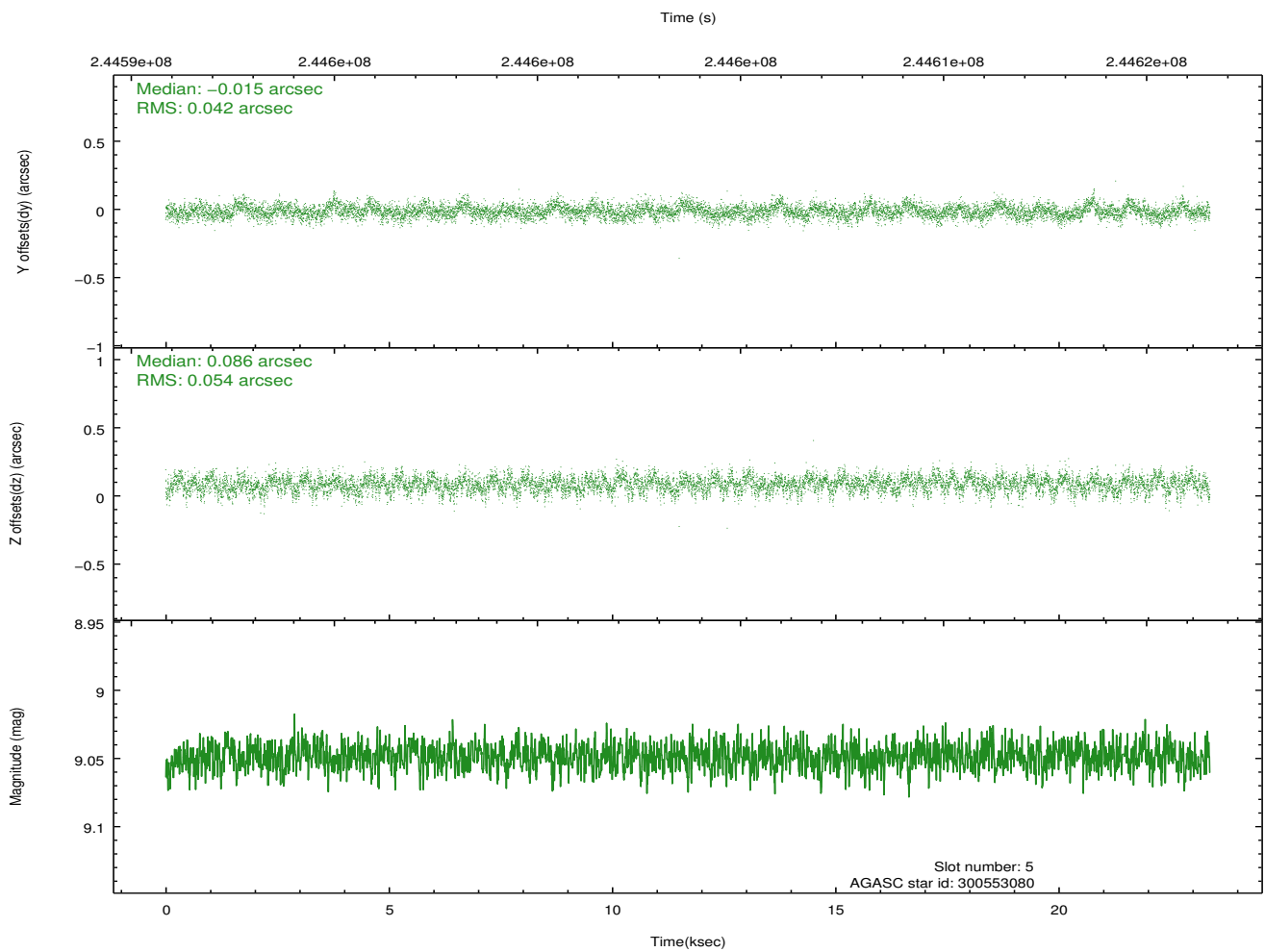
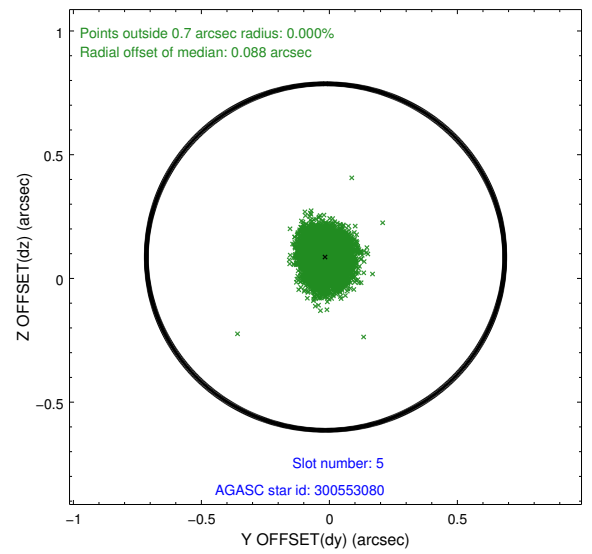
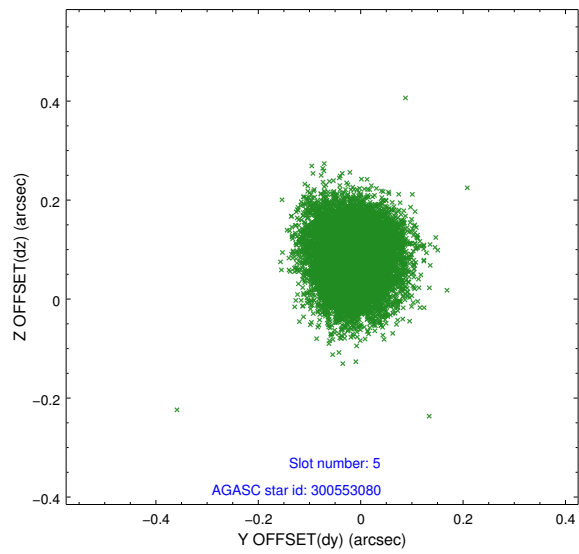
2.4.1 Slot 3



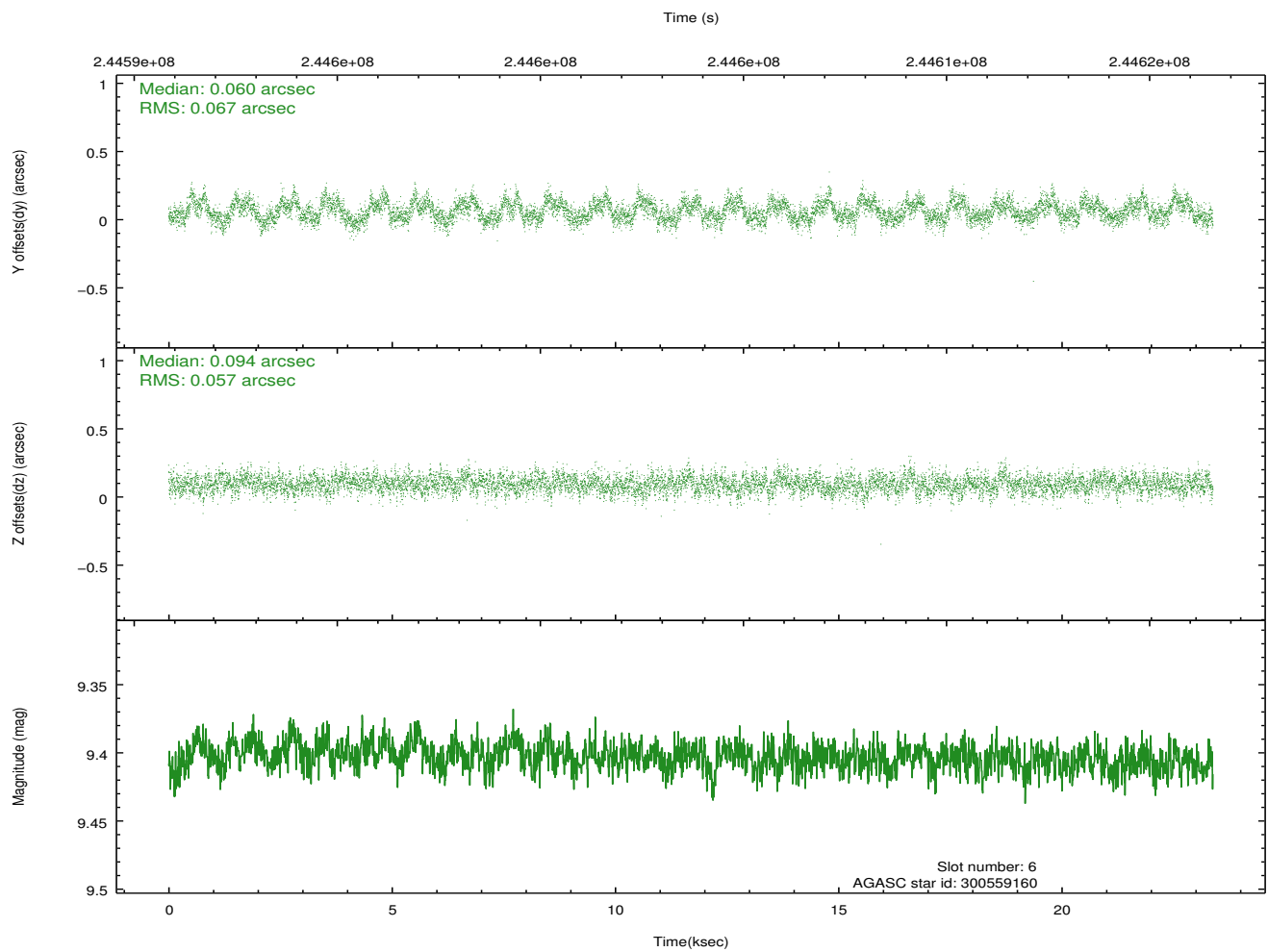
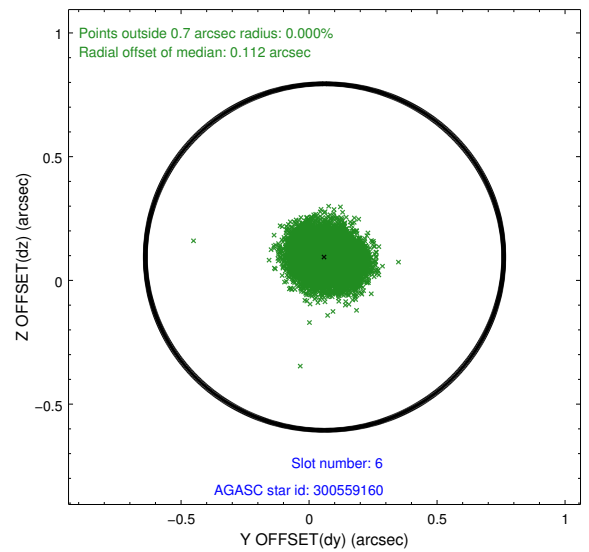
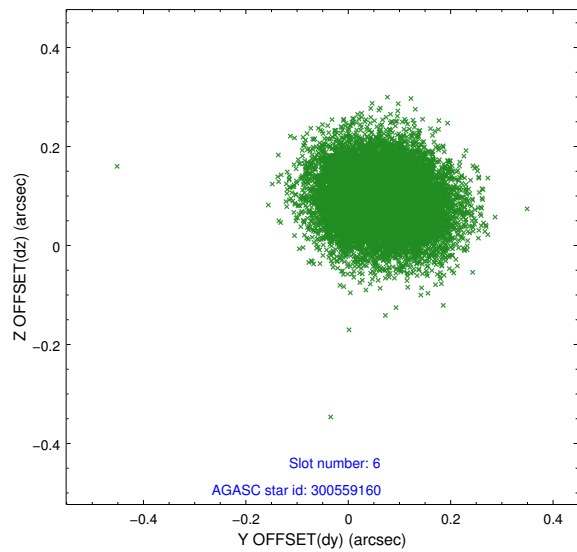
2.4.2 Slot 4



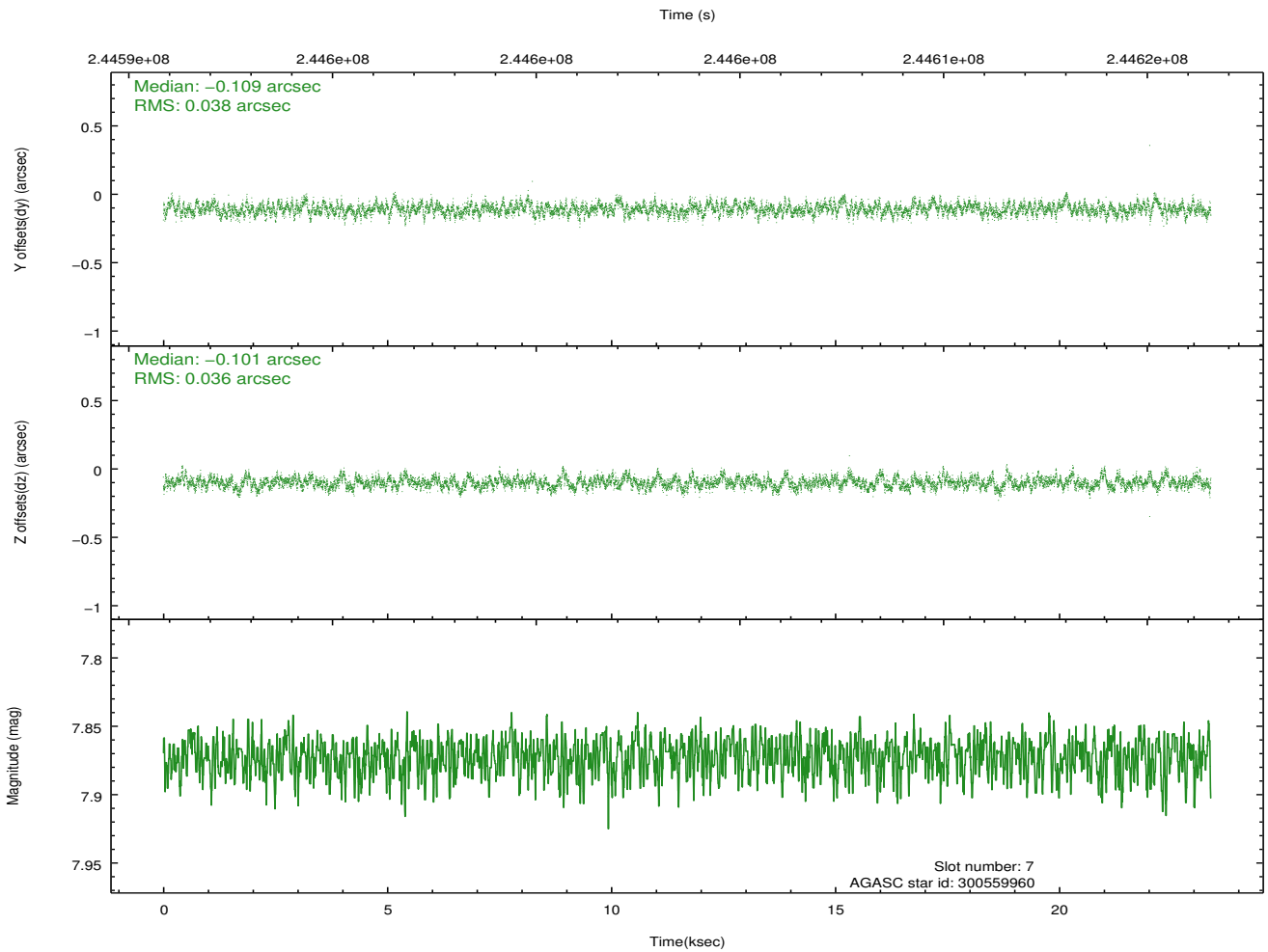
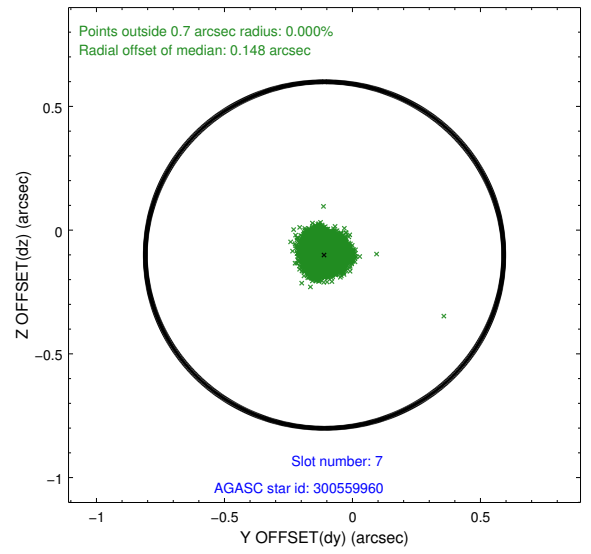
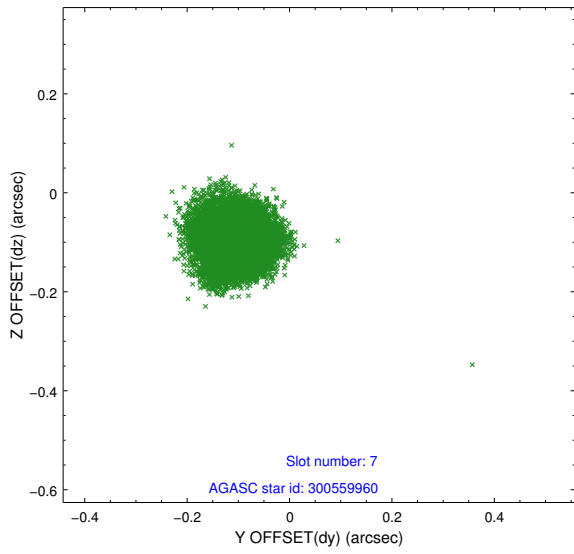
2.4.3 Slot 5



2.4.4 Slot 6

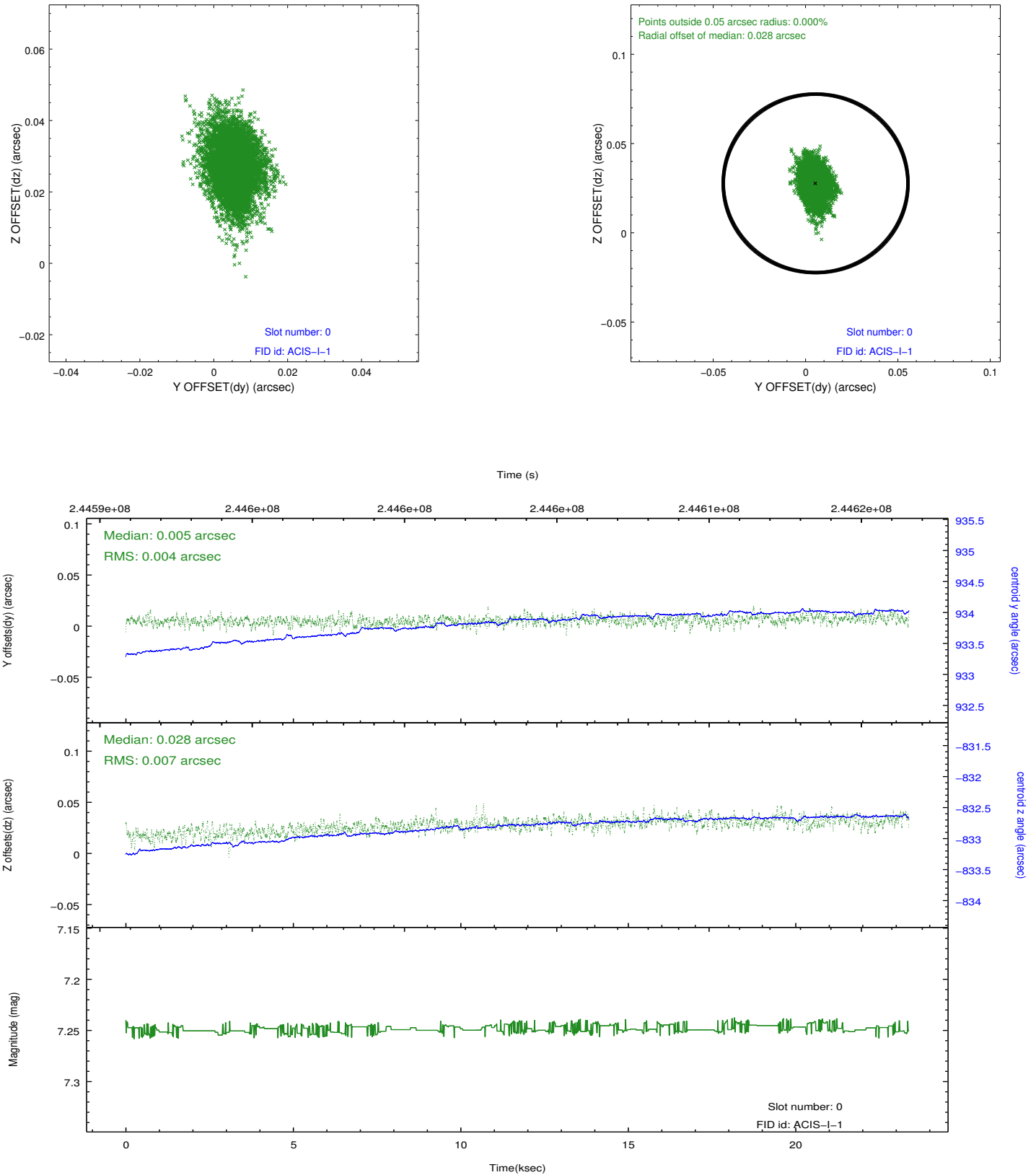


2.4.5 Slot 7

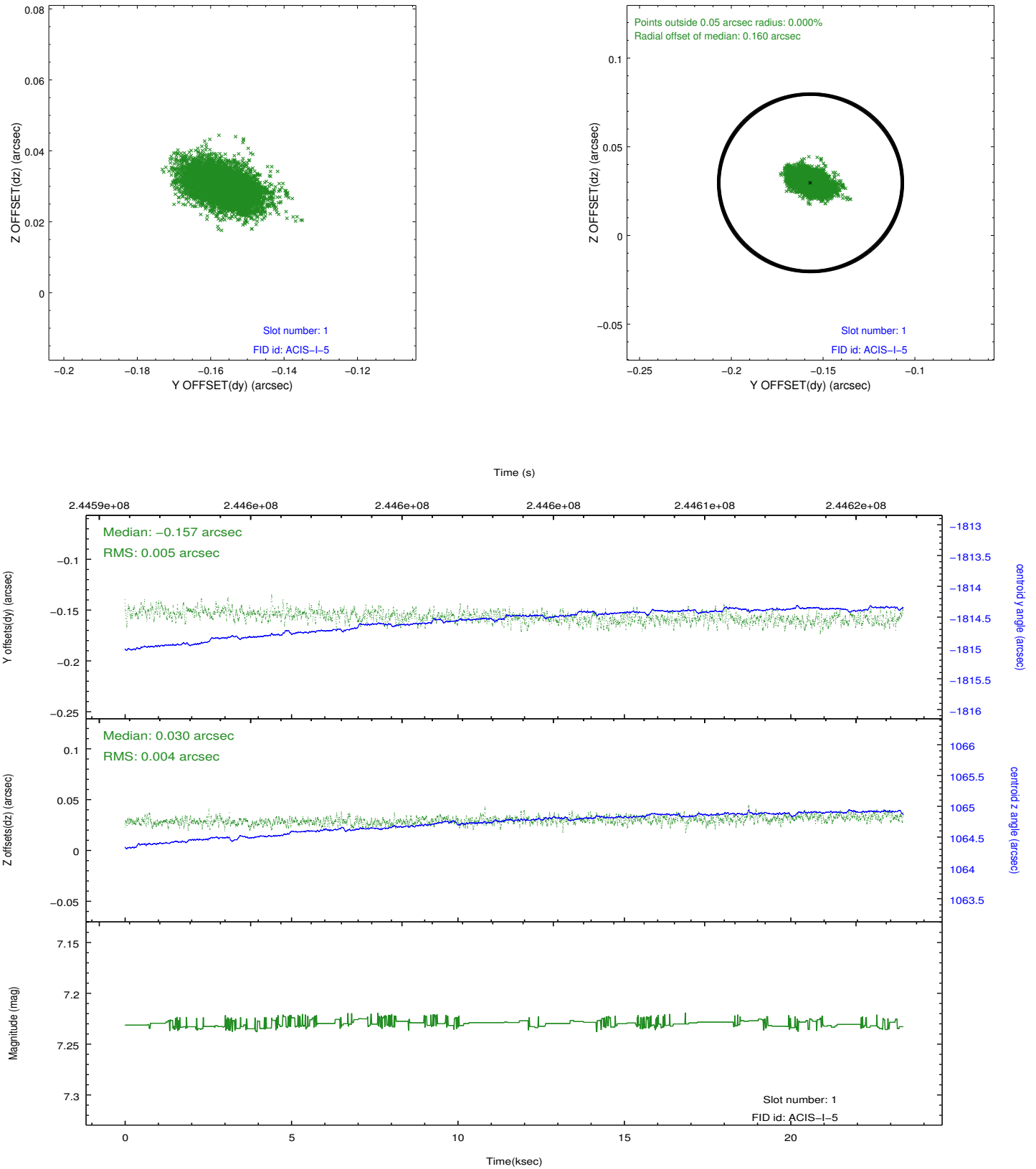


2.5 FID Slots

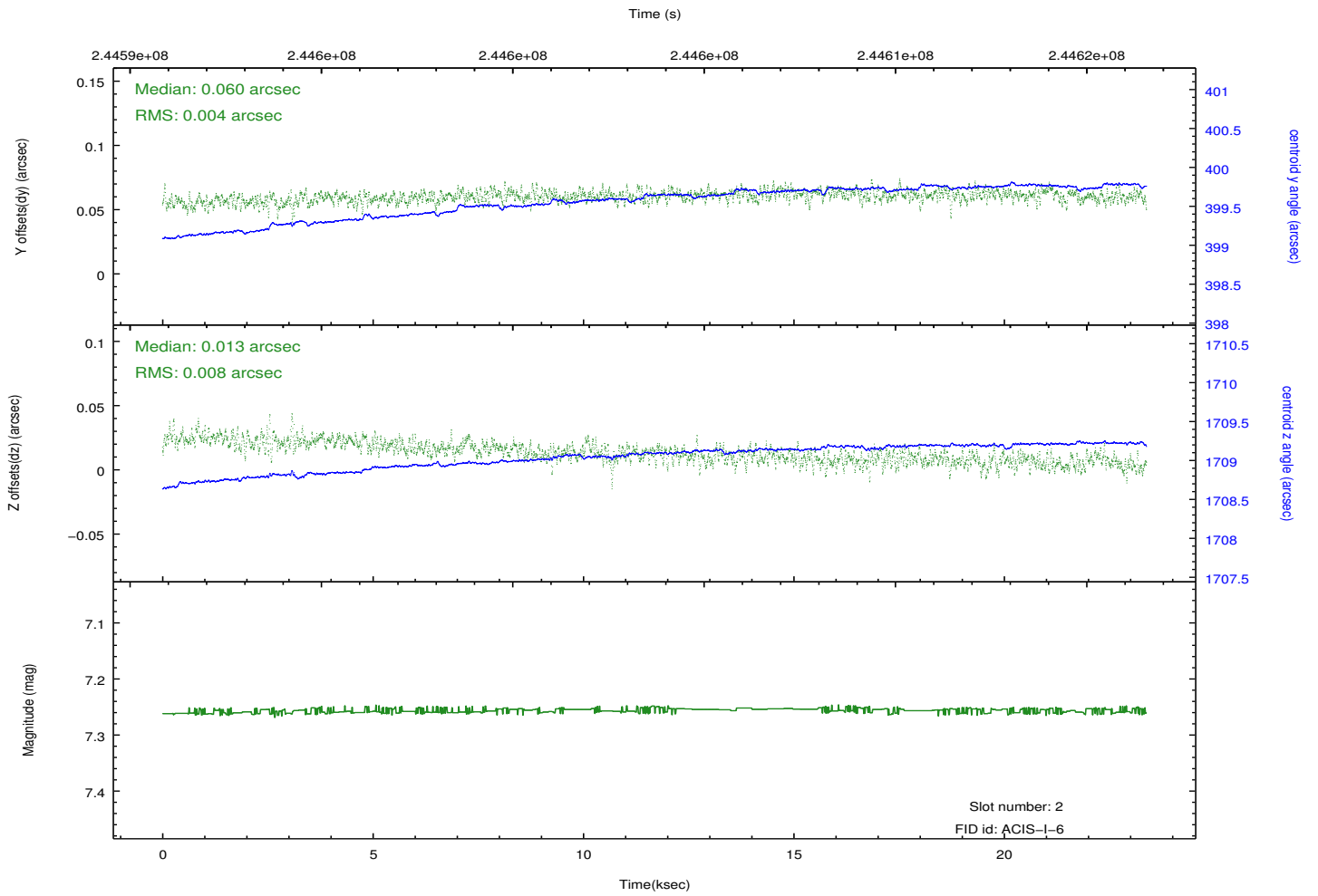
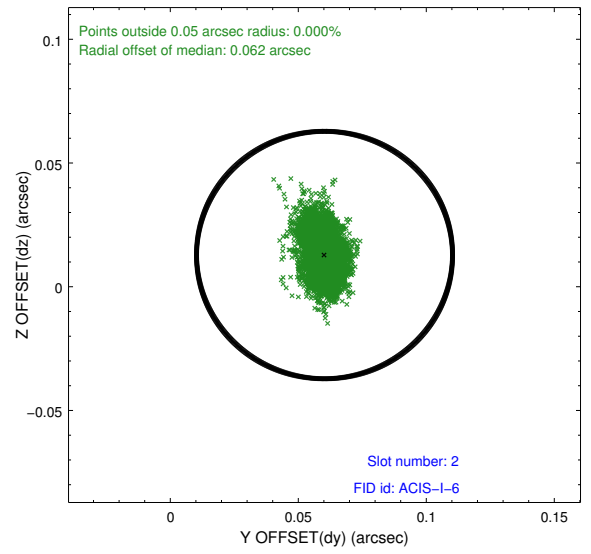
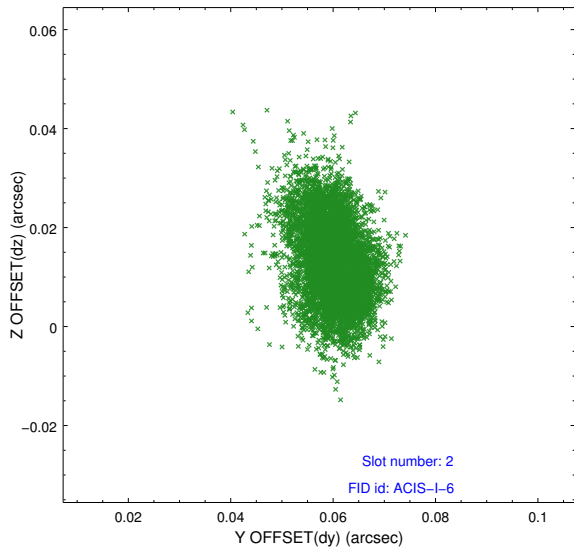
2.5.1 Slot 0



2.5.2 Slot 1



2.5.3 Slot 2



A Summary

A.1 Status

V&V Scientist	Jen Lauer
V&V Date (YYYY-MM-DD)	2013.03.08
V&V Edition	1
V&V Disposition and Status	OK
V&V Charge Time	22.45119

A.2 Comments

As a consequence of the DEA-A shutdown anomaly on Sep 15th (DOY258), the reported value of the ACIS FP temperature was ~1.3 degrees warmer than the actual temperature. The value for FP temperature reported in the headers of the Level 2 event file and the Mission Timeline files are incorrect by this amount for this processing. However, the temperature is corrected in the processing in order to obtain the correct temperature for the CTI correction. So the calibrated data are correct. If using the FP temp values in the headers of data files (some CIAO tools require this information), investigators should subtract 1.3 degrees from the reported temperature to determine the true temperature.

=====

Roll preference met.