

V&V Reference Report

L2 ASCDS Version : 8.4.3.1

Observation 6414 - L2 Version 2
Chandra X-Ray Center

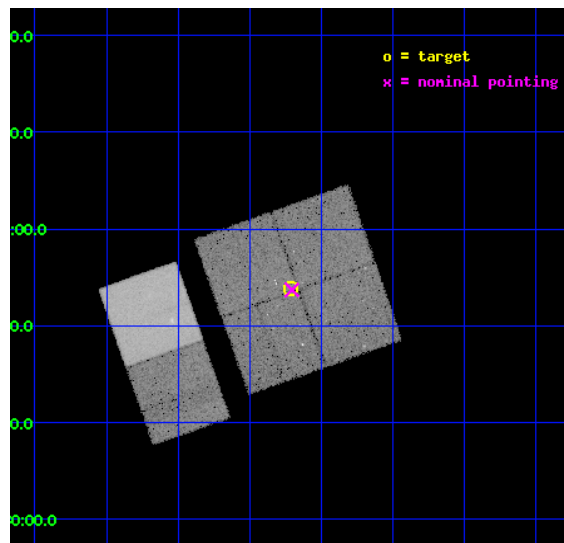
L2 Processing Date : Mar 31 2012

Contents

1	Front	2
2	OBI	3
2.1	OBI	3
2.1.1	Images	3
2.1.2	Bias	3
2.1.3	Parameters	4
2.1.4	Events	4
2.2	Compared Parameters	5
2.3	Aspect	6
2.4	Star Slots	9
2.4.1	Slot 3	9
2.4.2	Slot 4	10
2.4.3	Slot 5	11
2.4.4	Slot 6	12
2.4.5	Slot 7	13
2.5	FID Slots	14
2.5.1	Slot 0	14
2.5.2	Slot 1	15
2.5.3	Slot 2	16
A	Summary	17
A.1	Status	17
A.2	Comments	17

1 Front

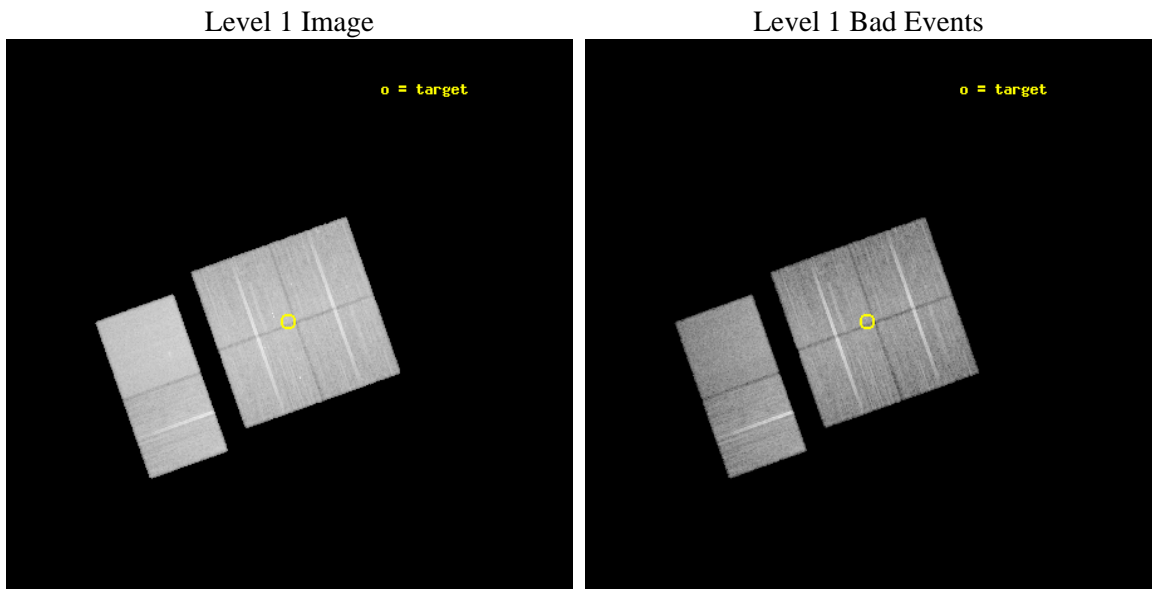
seq_num	200389	Sequence number
obs_id	6414	Observation id
title	CXO Monitoring of V1647 Ori: the X-ray Evolution of Pre-main Sequence Accretion Burst	Proposal title
observer	Dr. Joel Kastner	Principal investigator
object	IRAS05436-0007	Source name
dtcycle	0	
cycle	P	events from which exps? Prim/Second/Both
ra_targ	86.554583	Observer's specified target RA [deg]
dec_targ	-0.101389	Observer's specified target Dec [deg]
ra_nom	86.55145191638	Nominal RA [deg]
dec_nom	-0.10481569032668	Nominal Dec [deg]
roll_nom	250.51574703453	Nominal Roll [deg]
revision	2	Processing version of data
ontime	21926.399918318	Sum of GTIs [s]
livetime	21648.754640059	Livetime [s]
ontime0	21926.399918318	Sum of GTIs [s]
ontime1	21923.158948034	Sum of GTIs [s]
ontime2	21926.399918318	Sum of GTIs [s]
ontime3	21926.399918318	Sum of GTIs [s]
ontime6	21926.399918318	Sum of GTIs [s]
ontime7	21926.399918318	Sum of GTIs [s]
l2events	211817	Number of level 2 events



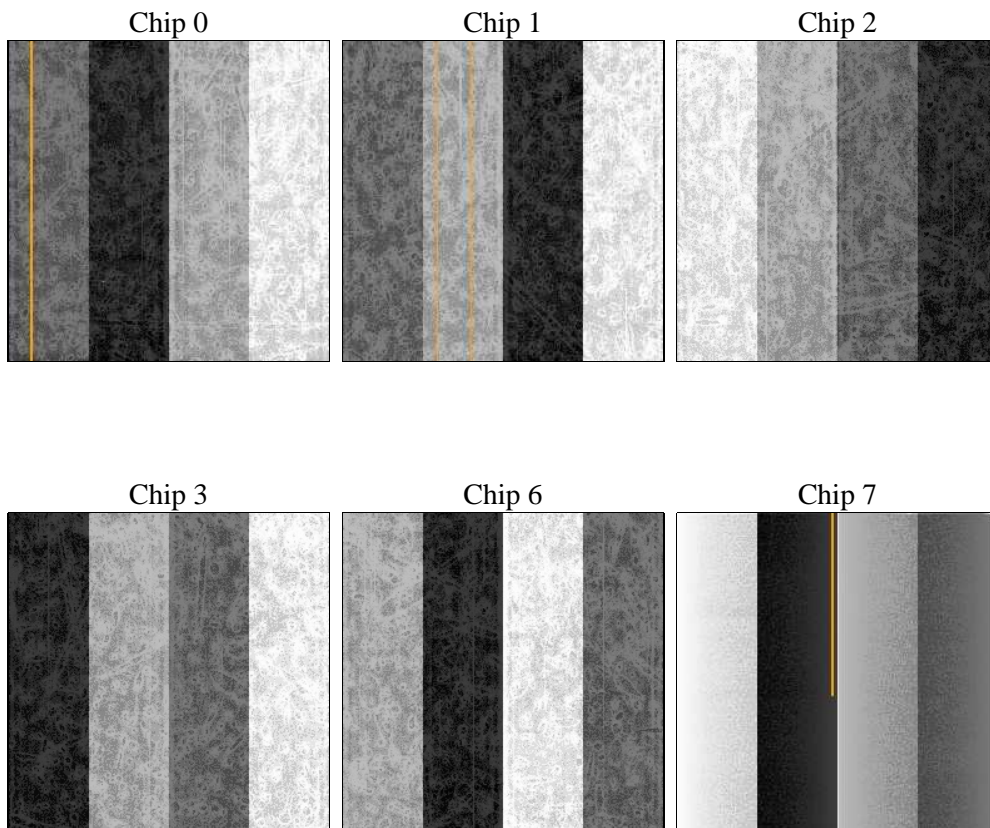
2 OBI

2.1 OBI

2.1.1 Images



2.1.2 Bias



2.1.3 Parameters

obi_num	0	Obi number	sched_exp_time	21800.000000	[s] Scheduled observation exposure time
ascdsver	8.4.3	Processing system revision	ontime	21926.399918318	Sum of GTIs [s]
caldbver	4.4.8	 	ontime0	21926.399918318	Sum of GTIs [s]
date	2012-03-31T11:18:45	Date and time of file creation	ontime1	21923.158948034	Sum of GTIs [s]
revision	2	Processing version of data	ontime2	21926.399918318	Sum of GTIs [s]
			ontime3	21926.399918318	Sum of GTIs [s]
			ontime6	21926.399918318	Sum of GTIs [s]
			ontime7	21926.399918318	Sum of GTIs [s]
			l1events	1302906	Number of level 1 events

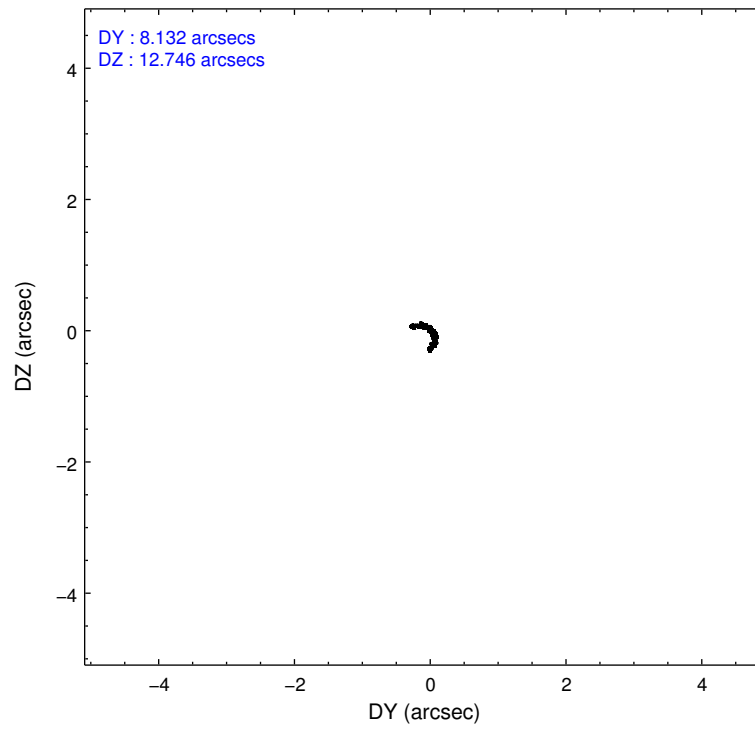
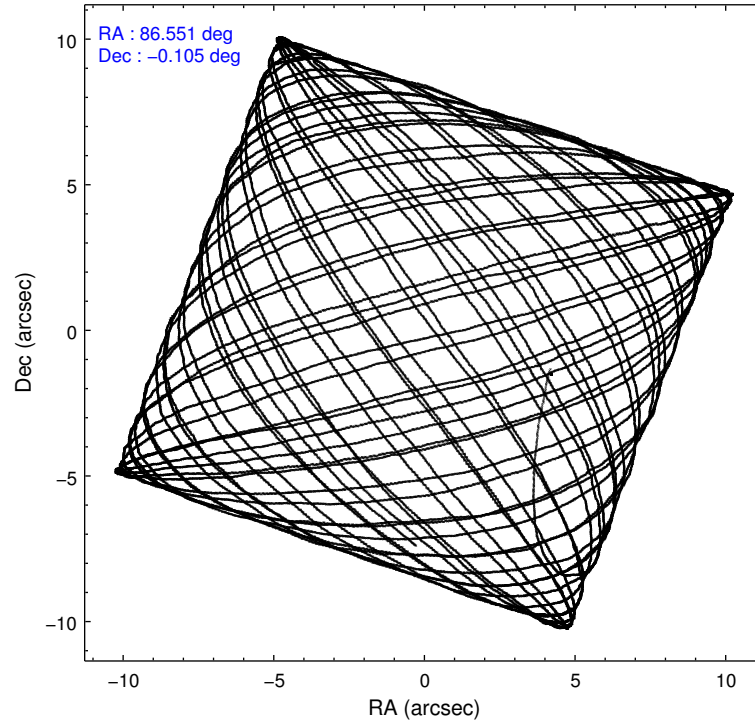
2.1.4 Events

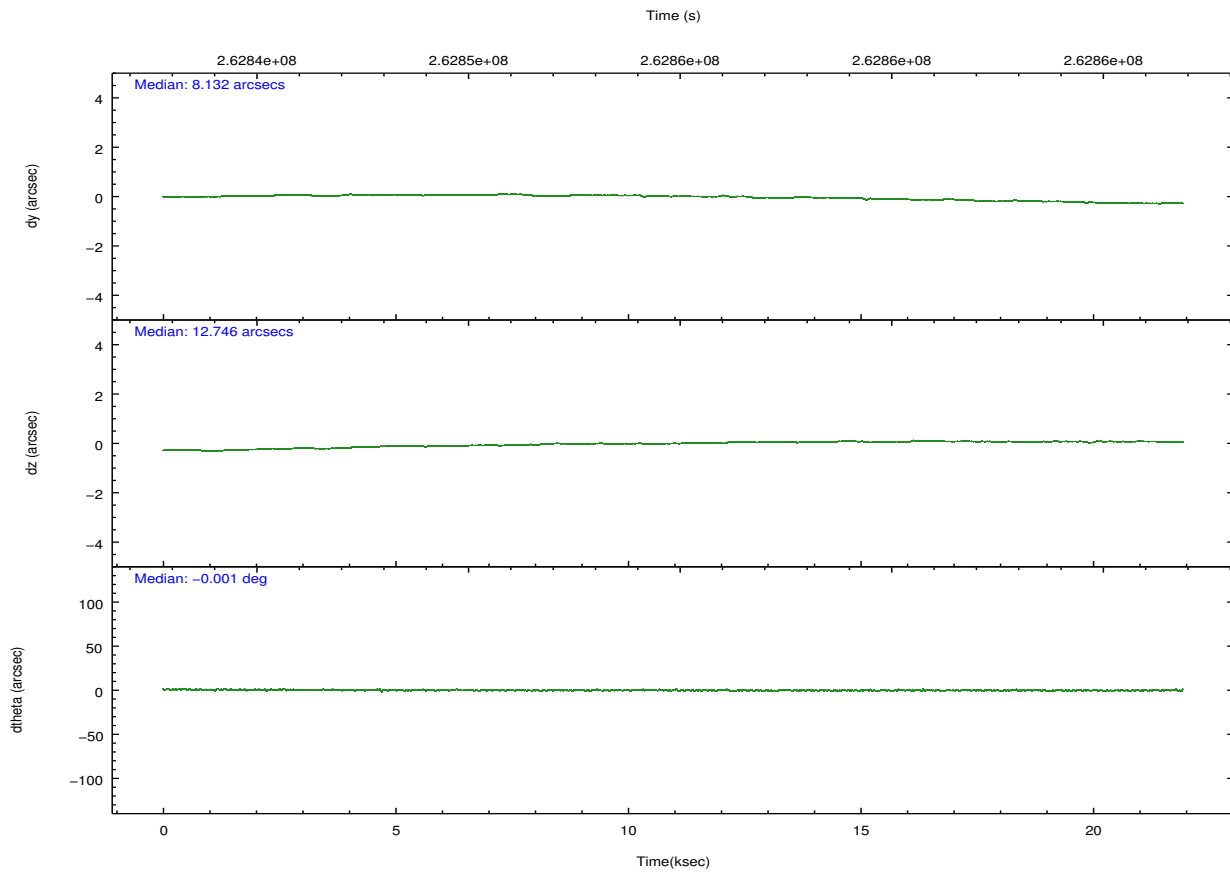
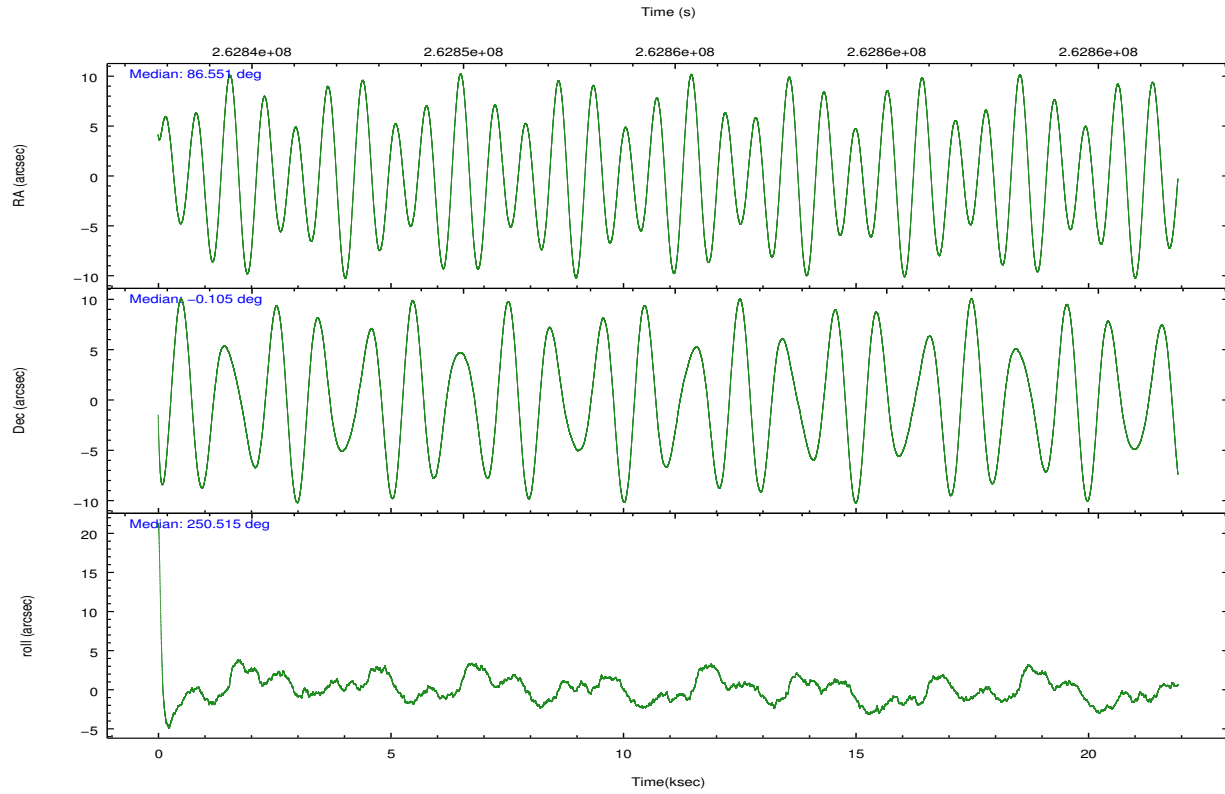
	ccd 0	ccd 1	ccd 2	ccd 3	ccd 6	ccd 7		ccd 0	ccd 1	ccd 2	ccd 3	ccd 6	ccd 7
level 1 events	189776	192964	213958	207592	215174	283442	grade 0 events	10584	10091	11413	10848	9482	10192
rejected events	166114	168343	190384	184398	191809	171256		5%	5%	5%	5%	4%	3%
rejected %	87%	87%	88%	88%	89%	60%	grade 1 events	120	104	122	144	119	287
								0%	0%	0%	0%	0%	0%
							grade 2 events	5483	5860	5093	4781	5405	23953
								2%	3%	2%	2%	2%	8%
							grade 3 events	2420	2530	2247	2315	2282	10243
								1%	1%	1%	1%	1%	3%
							grade 4 events	2273	2514	2239	2281	2403	10151
								1%	1%	1%	1%	1%	3%
							grade 5 events	8153	8883	8014	9615	10062	26844
								4%	4%	3%	4%	4%	9%
							grade 6 events	4195	4994	3953	4282	5103	63934
								2%	2%	1%	2%	2%	22%
							grade 7 events	156548	157988	180877	173326	180318	137838
								82%	81%	84%	83%	83%	48%

2.2 Compared Parameters

Parameter	Planned	Actual	Parameter	Planned	Actual
Instrument	ACIS	ACIS	Obspar format version number	7	7
Detector	ACIS-012367	ACIS-012367	Obspar file type	PREDICTED	ACTUAL
Grating	NONE	NONE	Obspar update status	NONE	UPDATED
Data mode	FAINT	FAINT	Number of optional ACIS chips dropped	0	0
Observation mode	POINTING	POINTING	On-chip summing requested	N	N
[deg] Pointing RA	86.546346	86.55145191638002	Subarray requested	NONE	NONE
[deg] Pointing Dec	-0.077905	-0.1048156903266798	Alternating exposures requested	N	N
[deg] Pointing Roll	250.307040	250.5157470345289	[s] Primary exposure time	0.000000	3.2
[mm] SIM focus pos	-0.782348	-0.7809083437167272			
[mm] SIM defocus	0	0.001439871863259334			
[mm] SIM translation stage pos	-233.592463	-233.5874344608287			
[mm] SIM translation stage offset	0	-0.005018542100998502			
[s] Observation start time (MET)	262843993.184000	262842329.74849			
Observation start date	2006-05-01T04:12:08	2006-05-01T03:45:29			
[s] Observation end time (MET)	262865793.184000	262866115.8996			
Observation end date	2006-05-01T10:15:28	2006-05-01T10:21:55			
Read mode	TIMED	TIMED			

2.3 Aspect





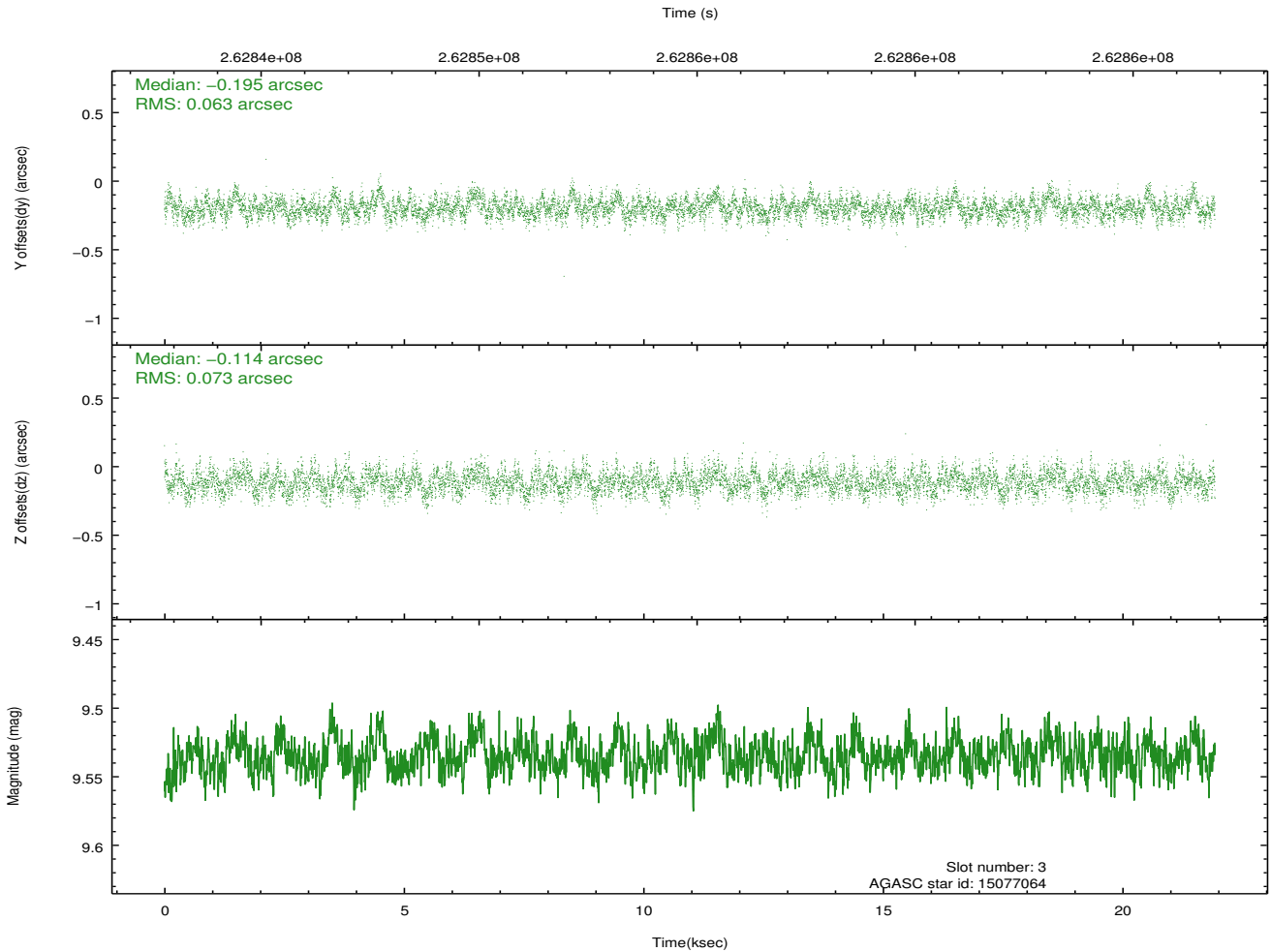
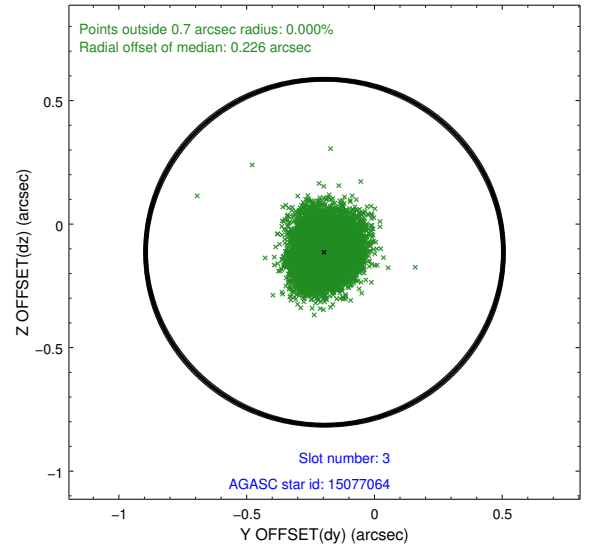
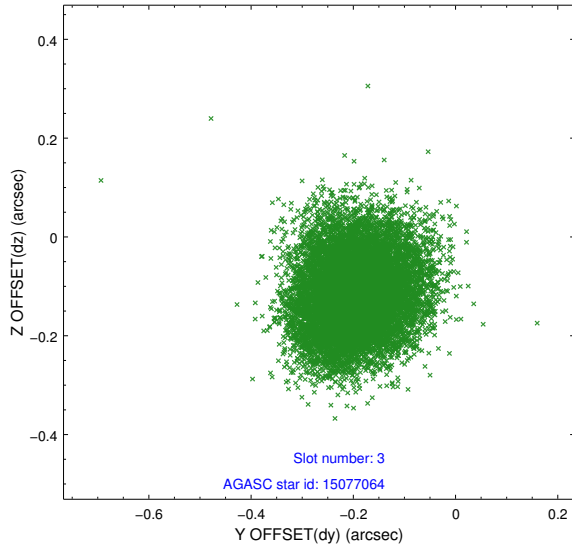
Slot Statistics

slot	status	id	mag	n_pts	med_dy	med_dz	dr1	dr2	ra	dec	mean_y	mean_z
0	FID	ACIS-I-1	7.24	5349	0.047	-0.016	0.010	0.017	0.000000	0.000000	931.60	-836.28
1	FID	ACIS-I-5	7.23	5349	-0.186	0.059	0.009	0.016	0.000000	0.000000	-1816.64	1061.23
2	FID	ACIS-I-6	7.24	5349	0.047	0.029	0.008	0.013	0.000000	0.000000	397.00	1705.86
3	GUIDE	15077064	9.54	10687	-0.195	-0.114	0.103	0.164	86.127122	0.497728	-1442.29	-2119.19
4	GUIDE	624820768	9.13	10692	0.059	-0.065	0.105	0.158	86.202480	-0.061953	363.47	-1184.92
5	GUIDE	624952472	10.20	10681	-0.012	0.005	0.122	0.195	86.824869	-0.013522	-555.09	865.73
6	GUIDE	624954088	9.59	10676	0.078	0.137	0.110	0.175	86.606399	-0.671650	1940.07	924.31
7	GUIDE	624954400	9.17	10694	0.069	0.031	0.086	0.141	86.607838	-0.762568	2246.73	1039.39

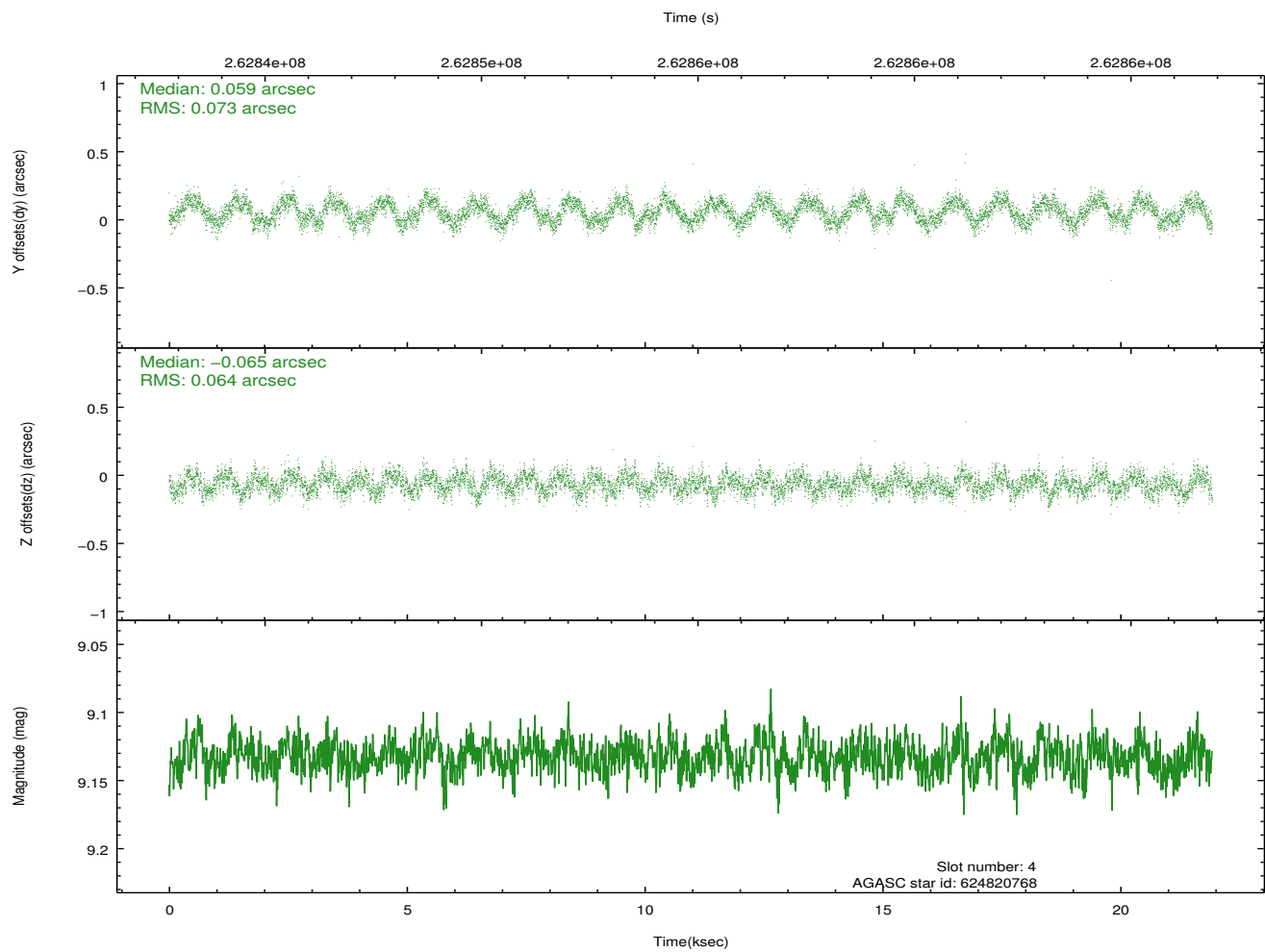
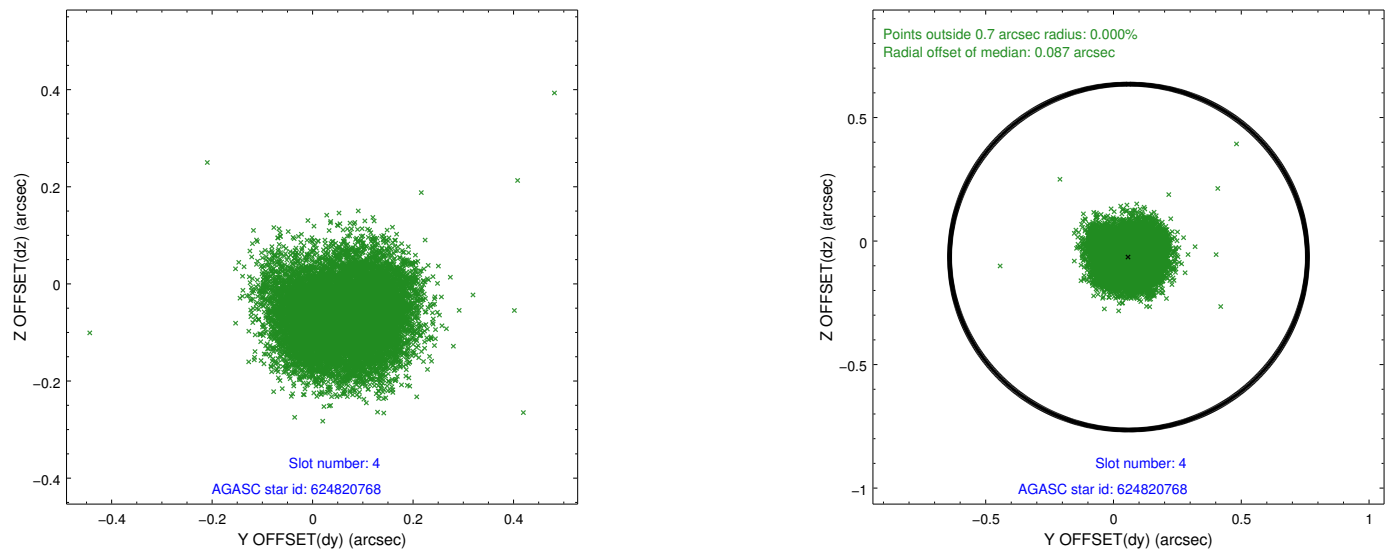
∞

2.4 Star Slots

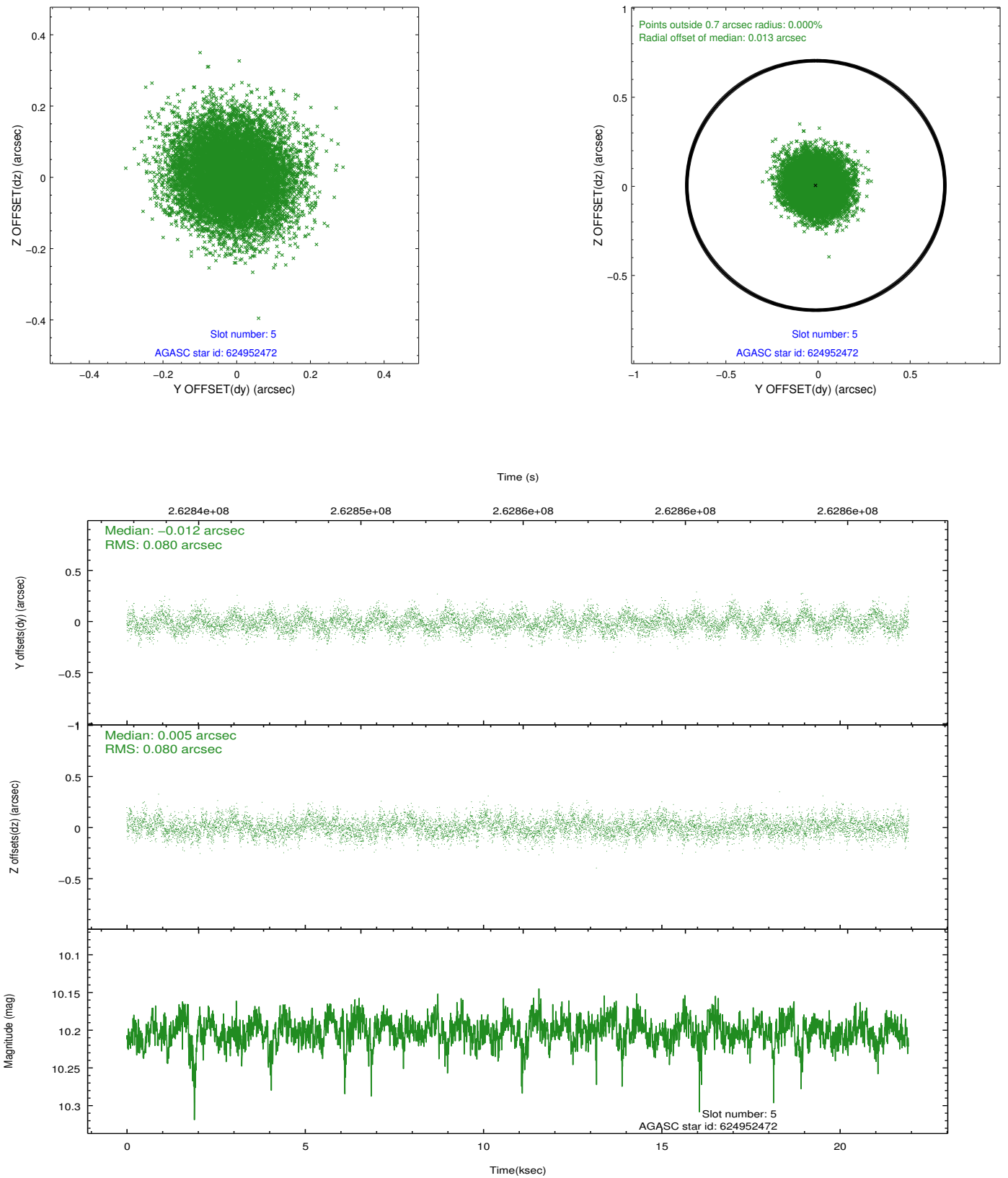
2.4.1 Slot 3



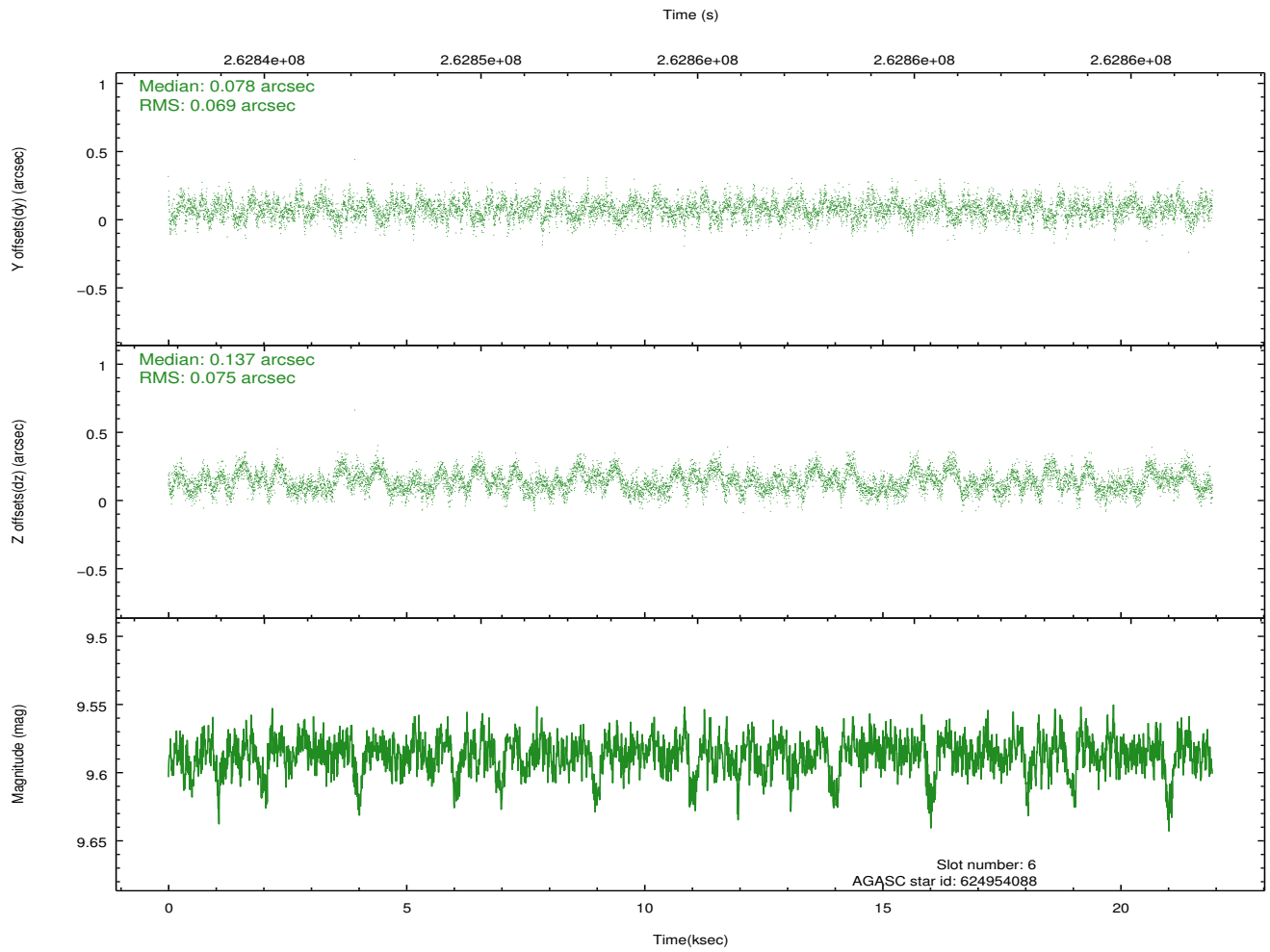
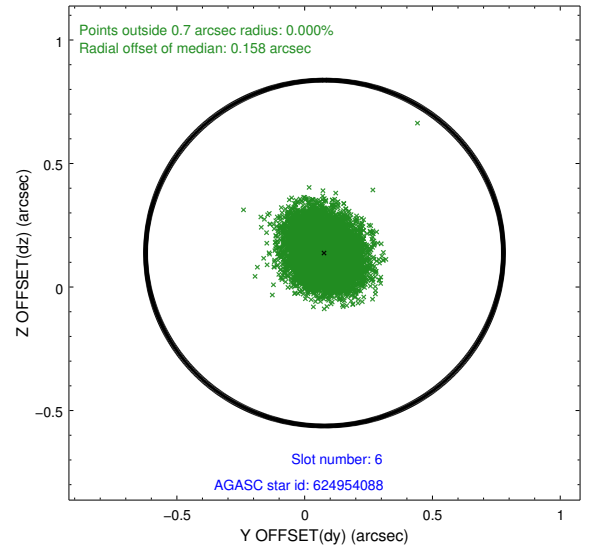
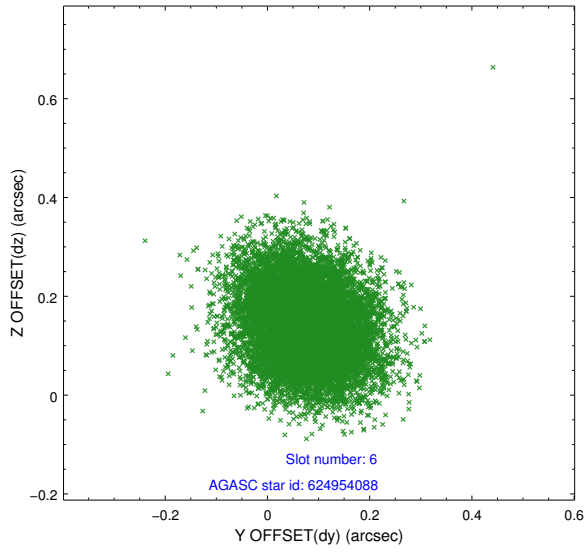
2.4.2 Slot 4



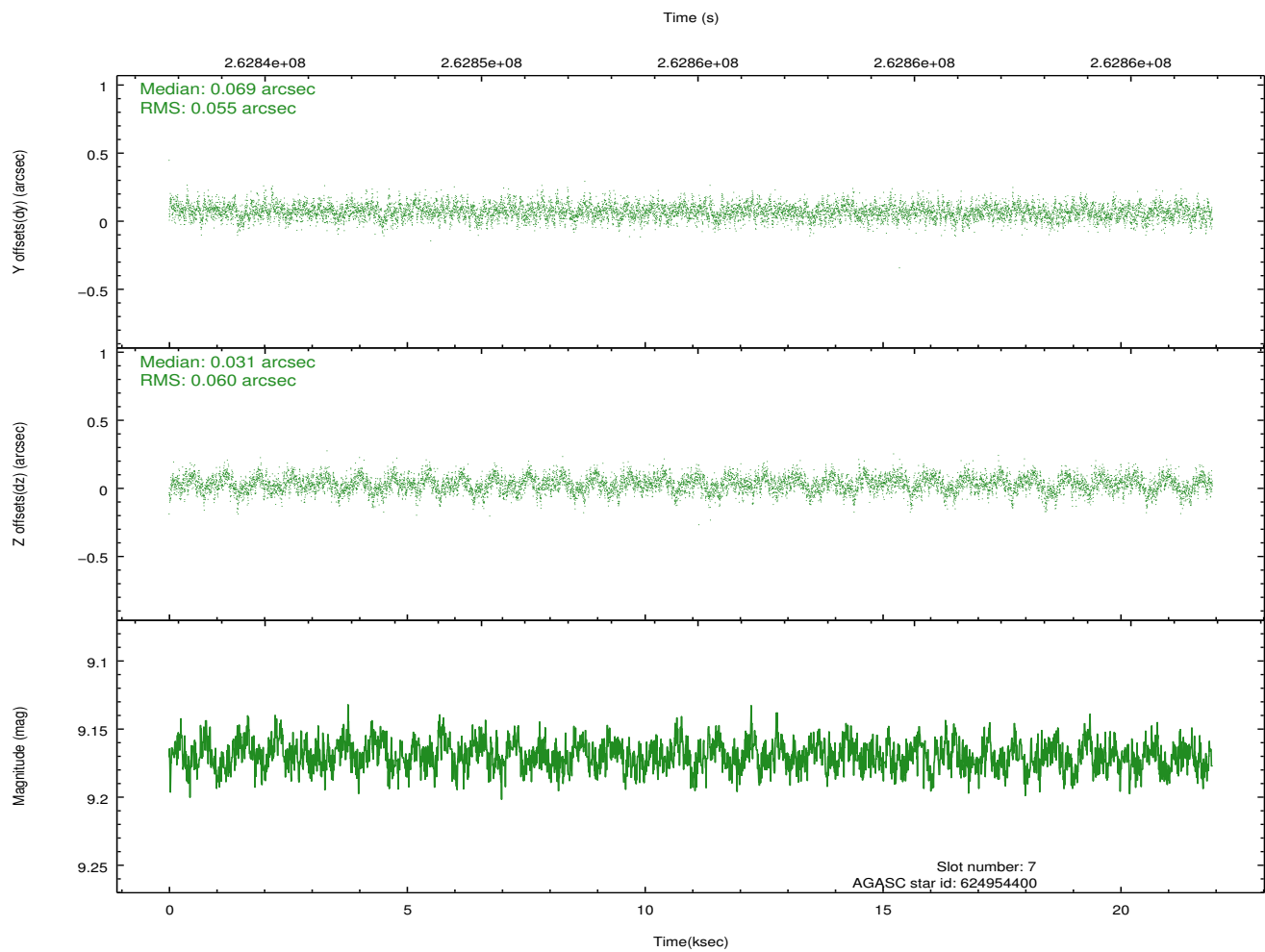
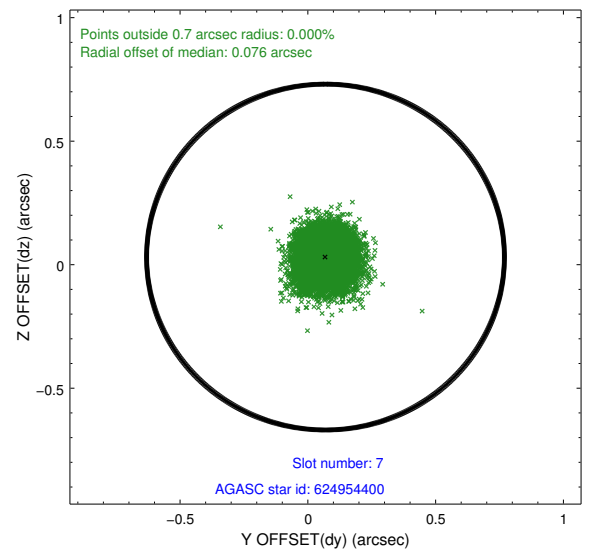
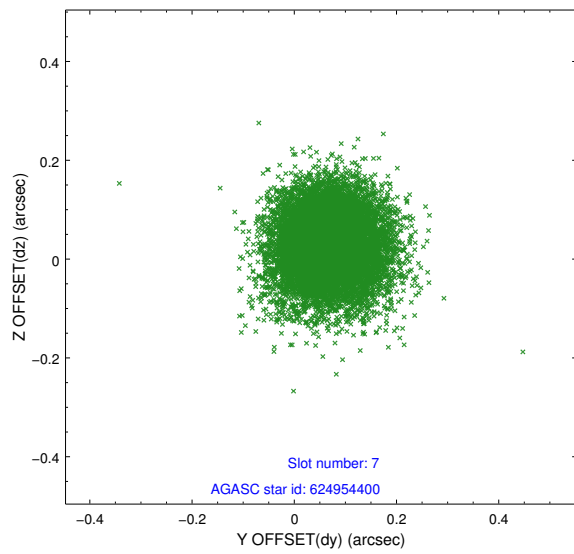
2.4.3 Slot 5



2.4.4 Slot 6

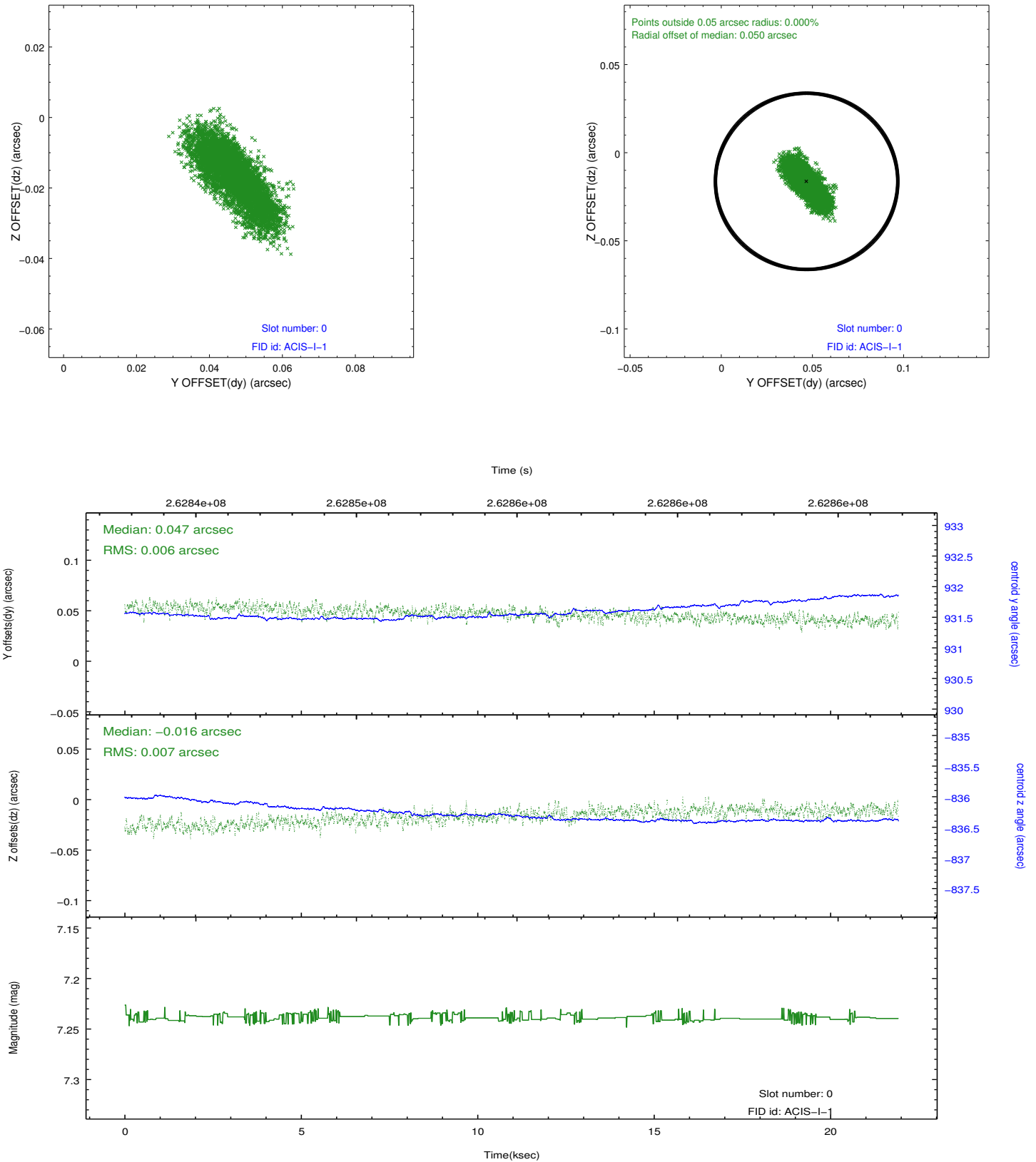


2.4.5 Slot 7

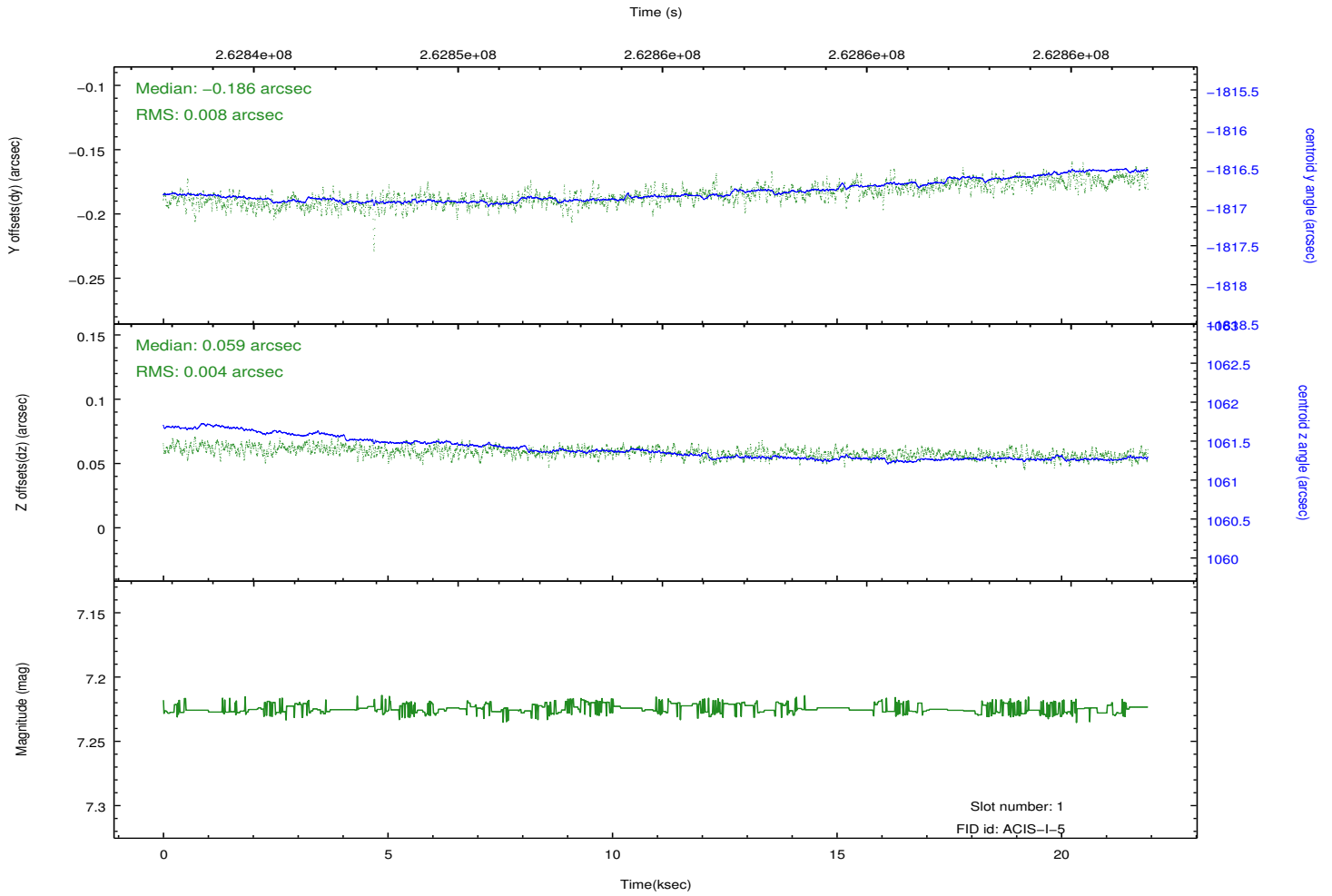
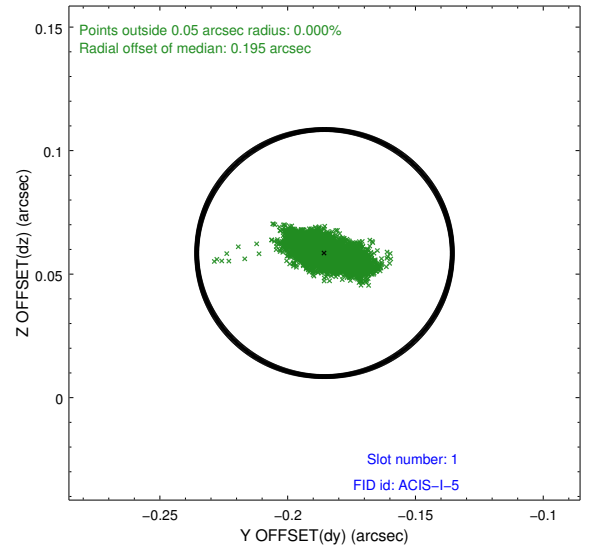
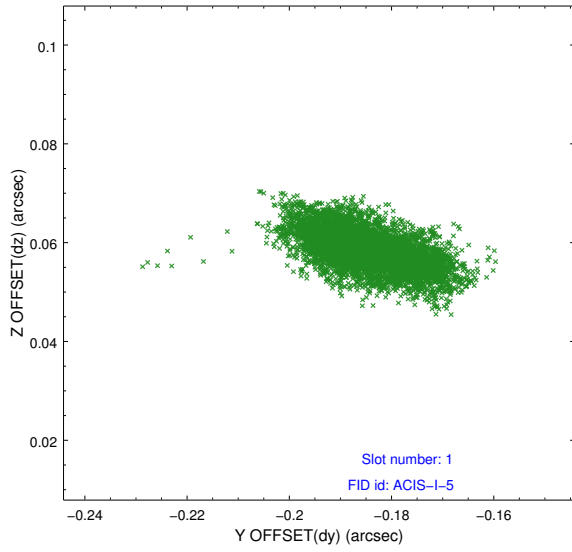


2.5 FID Slots

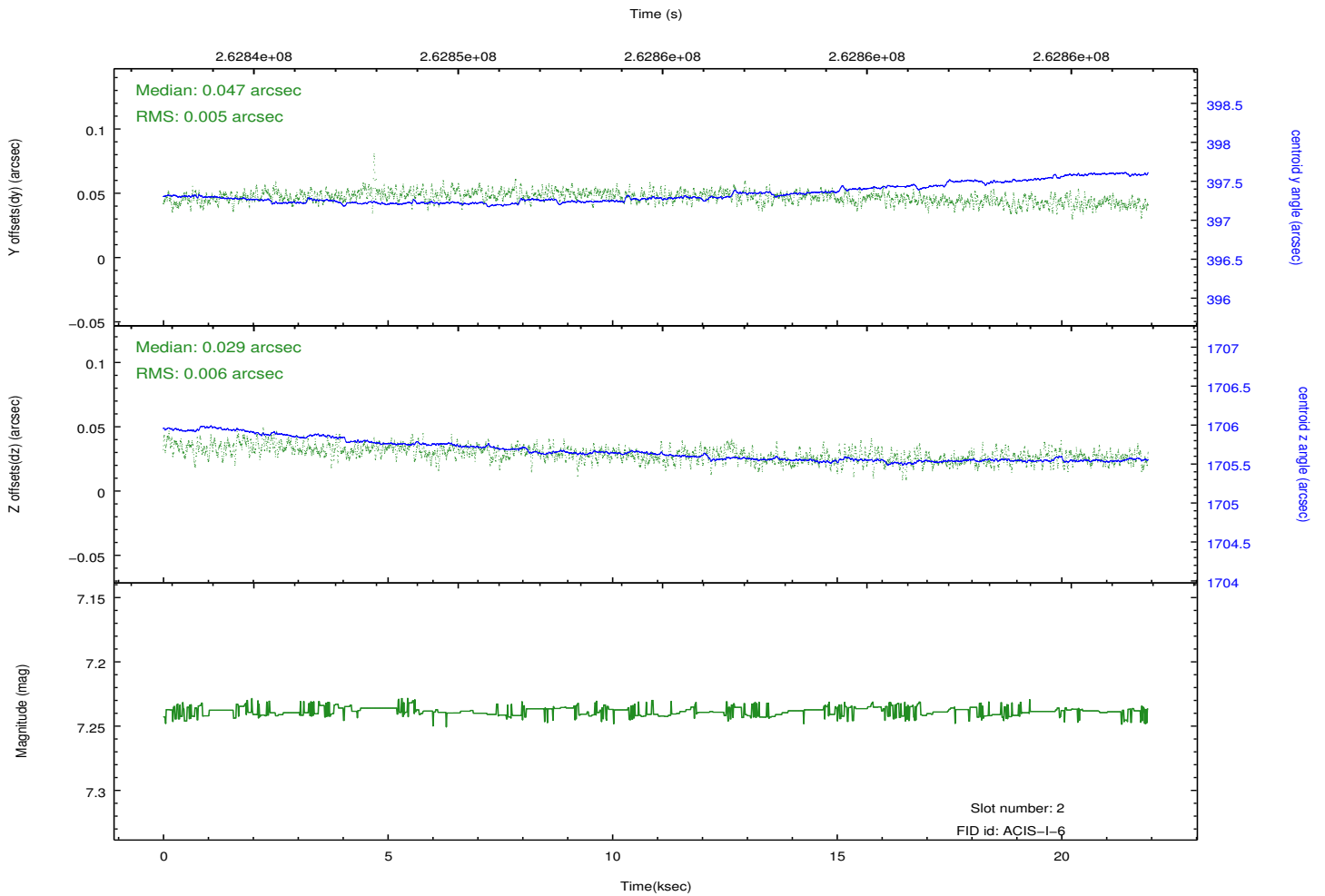
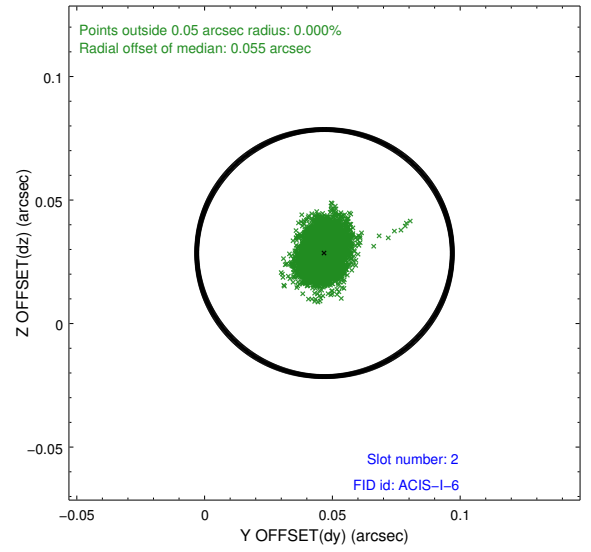
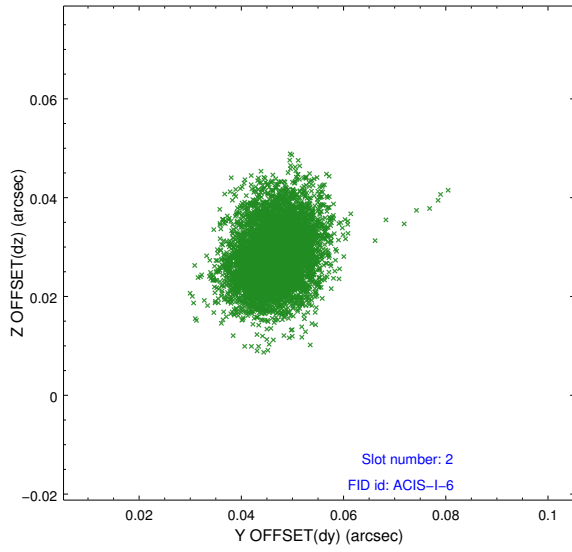
2.5.1 Slot 0



2.5.2 Slot 1



2.5.3 Slot 2



A Summary

A.1 Status

V&V Scientist	Jen Lauer
V&V Date (YYYY-MM-DD)	2012.04.02
V&V Edition	1
V&V Disposition and Status	OK
V&V Charge Time	21.9263999

A.2 Comments