

V&V Reference Report

L2 ASCDS Version : 8.4.3

Observation 6954 - L2 Version 2
Chandra X-Ray Center

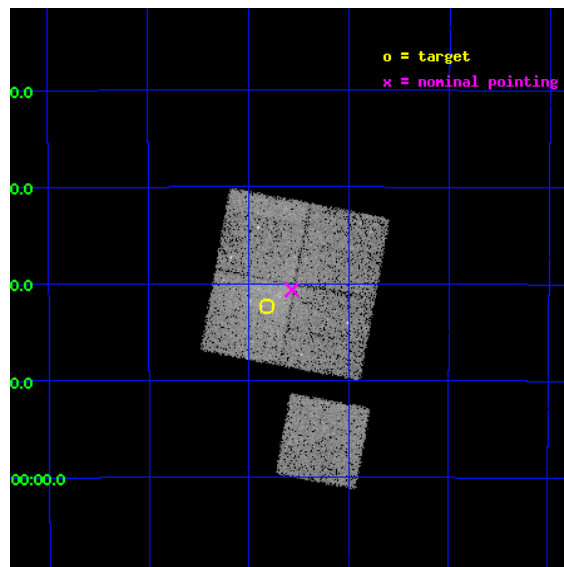
L2 Processing Date : Mar 31 2012

Contents

1	Front	2
2	OBI	3
2.1	OBI	3
2.1.1	Images	3
2.1.2	Bias	3
2.1.3	Parameters	4
2.1.4	Events	4
2.2	Compared Parameters	5
2.3	Aspect	6
2.4	Star Slots	9
2.4.1	Slot 3	9
2.4.2	Slot 4	10
2.4.3	Slot 5	11
2.4.4	Slot 6	12
2.4.5	Slot 7	13
2.5	FID Slots	14
2.5.1	Slot 0	14
2.5.2	Slot 1	15
2.5.3	Slot 2	16
A	Summary	17
A.1	Status	17
A.2	Comments	17

1 Front

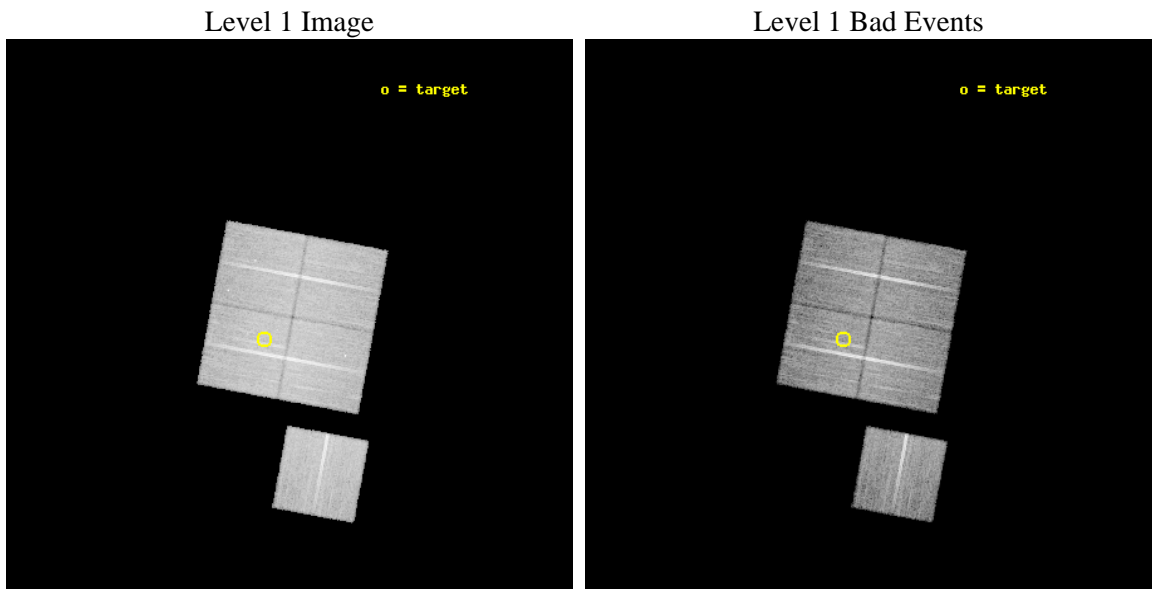
seq_num	800587	Sequence number
obs_id	6954	Observation id
title	Chandra Study of the Structure of the Southern Part of the Horologium Supercluster	Proposal title
observer	Dr. Hans Boehringer	Principal investigator
object	RXCJ0340-4542	Source name
dtcycle	0	
cycle	P	events from which exps? Prim/Second/Both
ra_targ	55.204167	Observer's specified target RA [deg]
dec_targ	-45.705278	Observer's specified target Dec [deg]
ra_nom	55.142169983577	Nominal RA [deg]
dec_nom	-45.677461715957	Nominal Dec [deg]
roll_nom	190.50014496994	Nominal Roll [deg]
revision	2	Processing version of data
ontime	18134.959004849	Sum of GTIs [s]
livetime	17898.012414688	Livetime [s]
ontime0	18138.099965096	Sum of GTIs [s]
ontime1	18138.099965096	Sum of GTIs [s]
ontime2	18134.959004849	Sum of GTIs [s]
ontime3	18134.959004849	Sum of GTIs [s]
ontime6	18138.099965096	Sum of GTIs [s]
l2events	62037	Number of level 2 events



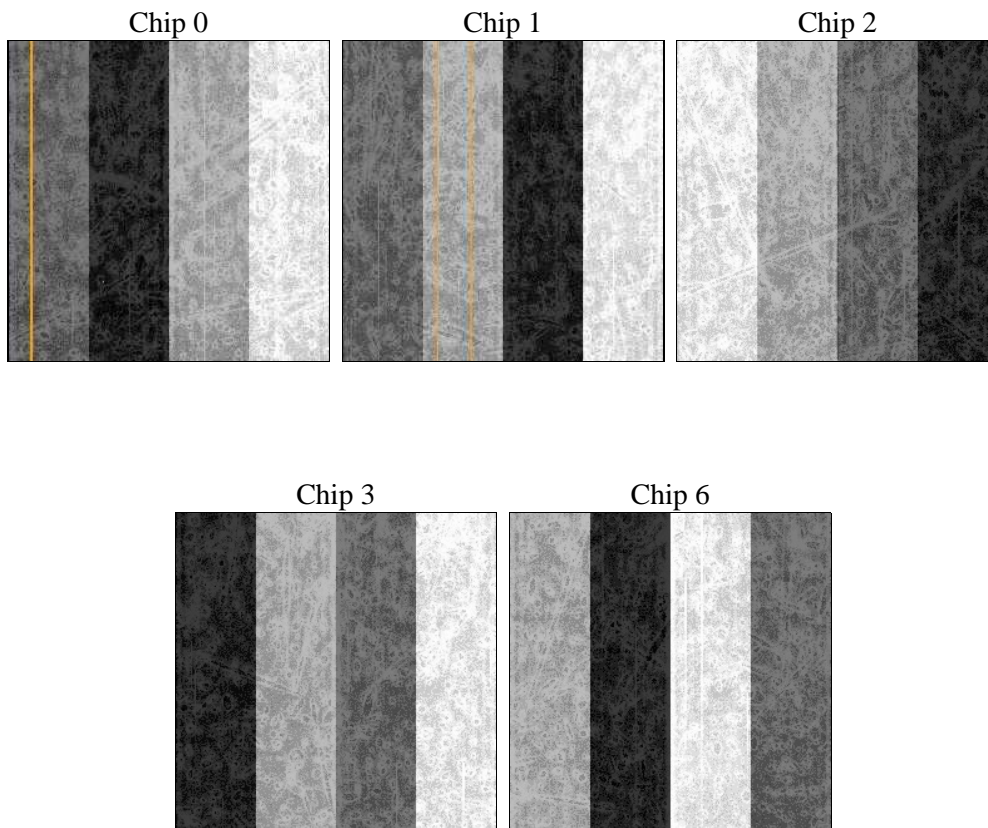
2 OBI

2.1 OBI

2.1.1 Images



2.1.2 Bias



2.1.3 Parameters

obi_num	0	Obi number	sched_exp_time	18000.000000	[s] Scheduled observation exposure time
ascdsver	8.4.3	Processing system revision	ontime	18134.959004849	Sum of GTIs [s]
caldbver	4.4.8	 	ontime0	18138.099965096	Sum of GTIs [s]
date	2012-03-31T12:38:27	Date and time of file creation	ontime1	18138.099965096	Sum of GTIs [s]
revision	2	Processing version of data	ontime2	18134.959004849	Sum of GTIs [s]
			ontime3	18134.959004849	Sum of GTIs [s]
			ontime6	18138.099965096	Sum of GTIs [s]
			l1events	686156	Number of level 1 events

2.1.4 Events

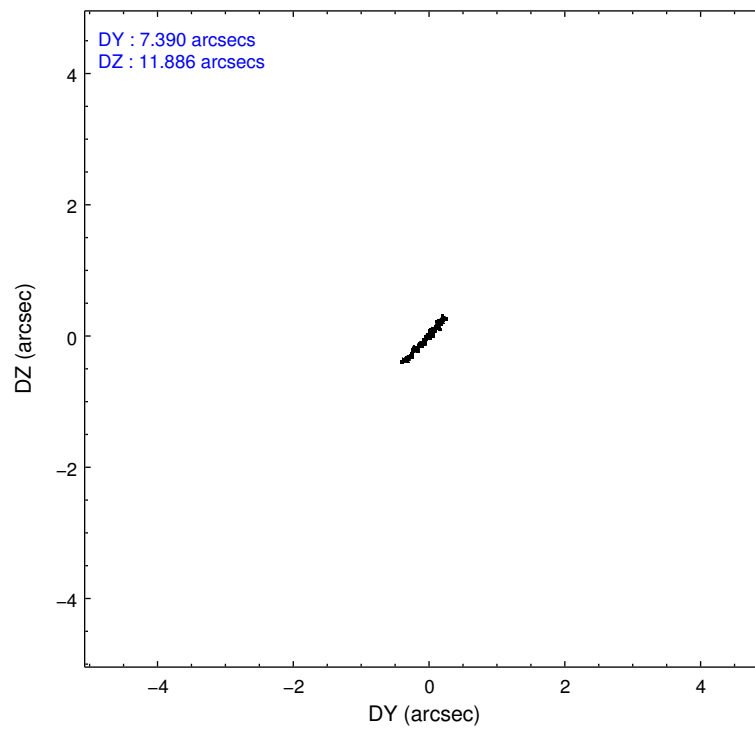
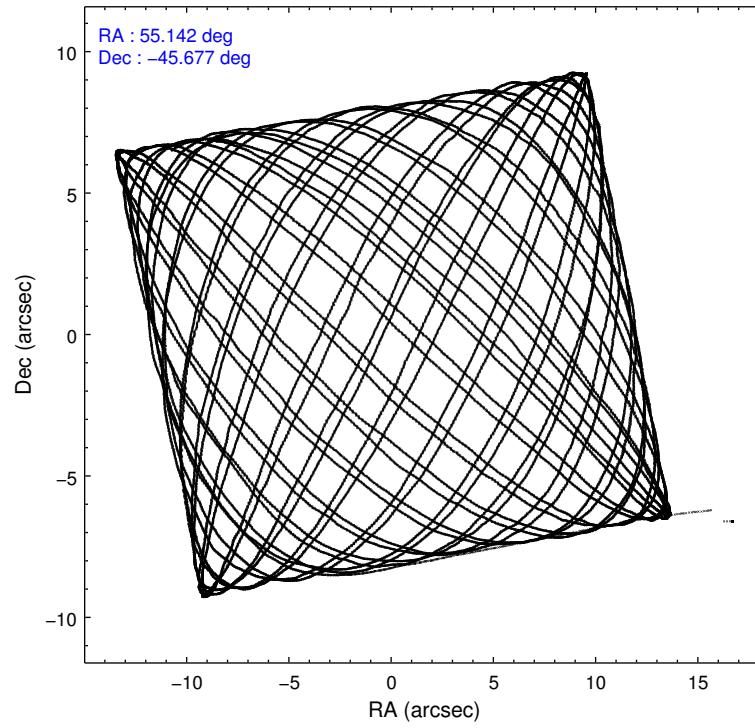
	ccd 0	ccd 1	ccd 2	ccd 3	ccd 6
level 1 events	131772	128115	147575	144178	134516
rejected events	118304	111803	133697	127300	121136
rejected %	89%	87%	90%	88%	90%

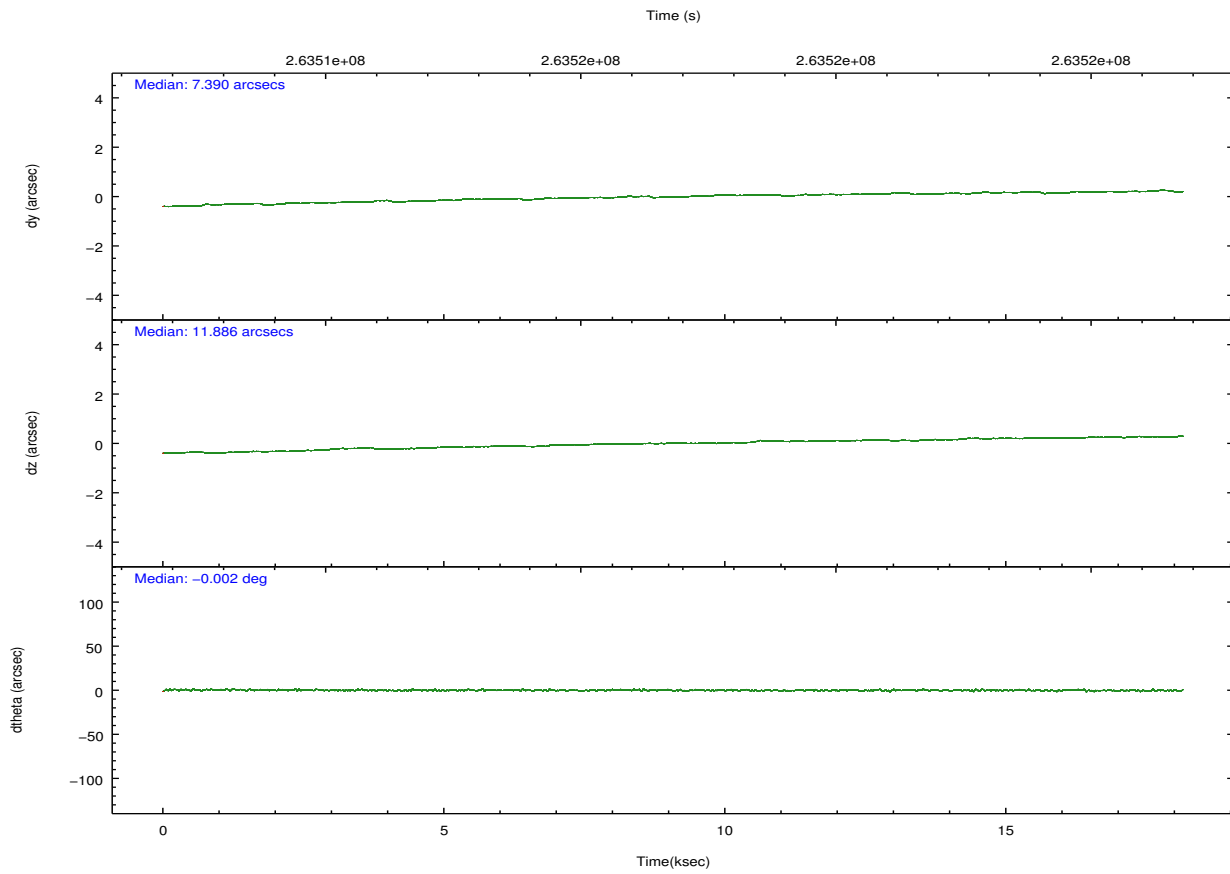
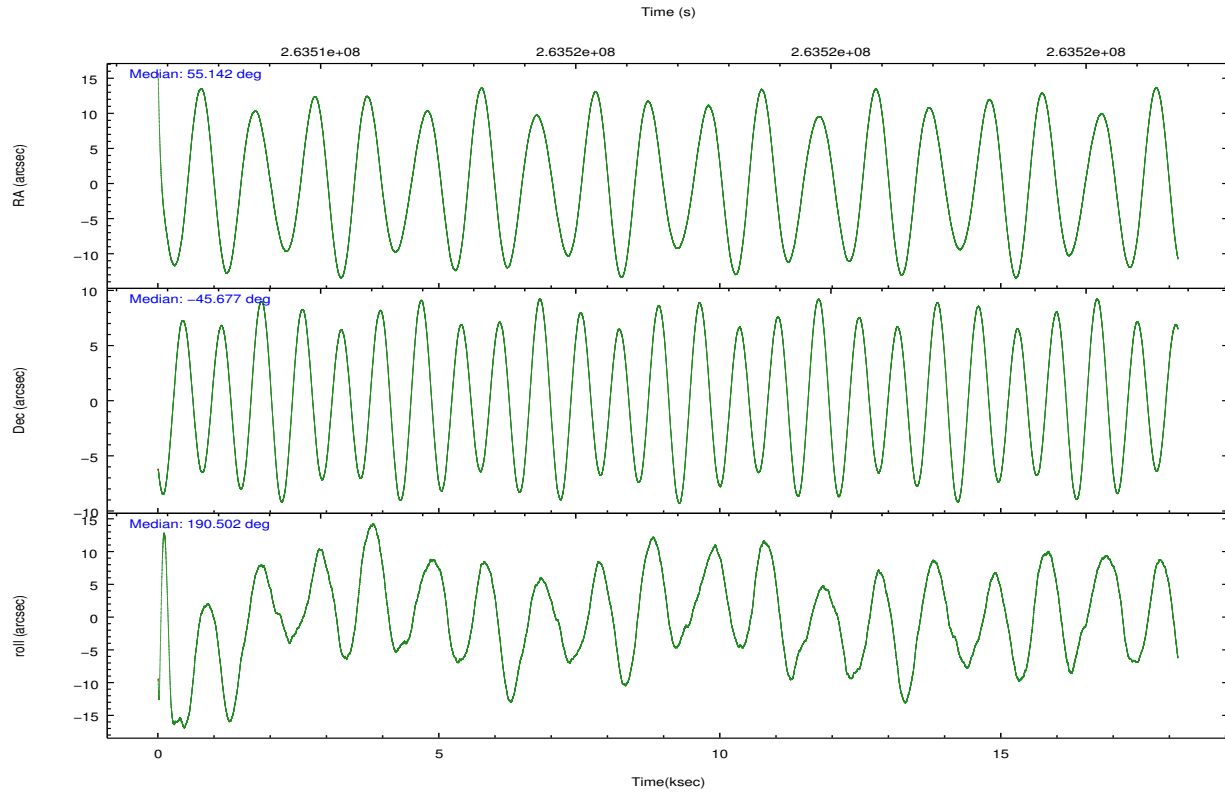
	ccd 0	ccd 1	ccd 2	ccd 3	ccd 6
grade 0 events	4785	6501	5644	8110	4566
	3%	5%	3%	5%	3%
grade 1 events	59	69	92	103	66
	0%	0%	0%	0%	0%
grade 2 events	3237	3647	3084	3155	3052
	2%	2%	2%	2%	2%
grade 3 events	1585	1732	1517	1570	1574
	1%	1%	1%	1%	1%
grade 4 events	1492	1628	1437	1548	1481
	1%	1%	0%	1%	1%
grade 5 events	4682	5257	4440	5571	5458
	3%	4%	3%	3%	4%
grade 6 events	2564	3006	2402	2712	2901
	1%	2%	1%	1%	2%
grade 7 events	113368	106275	128959	121409	115418
	86%	82%	87%	84%	85%

2.2 Compared Parameters

Parameter	Planned	Actual	Parameter	Planned	Actual
Instrument	ACIS	ACIS	Obspar format version number	7	7
Detector	ACIS-01236	ACIS-01236	Obspar file type	PREDICTED	ACTUAL
Grating	NONE	NONE	Obspar update status	NONE	UPDATED
Data mode	VFAINT	VFAINT	Number of optional ACIS chips dropped	0	0
Observation mode	POINTING	POINTING	On-chip summing requested	N	N
[deg] Pointing RA	55.171885	55.14216998357703	Subarray requested	NONE	NONE
[deg] Pointing Dec	-45.659578	-45.67746171595689	Alternating exposures requested	N	N
[deg] Pointing Roll	190.312745	190.5001449699408	[s] Primary exposure time	0.000000	3.1
[mm] SIM focus pos	-0.782348	-0.7809083437167272			
[mm] SIM defocus	0	0.001439871863259334			
[mm] SIM translation stage pos	-233.592463	-233.5874344608287			
[mm] SIM translation stage offset	0	-0.005018542100998502			
[s] Observation start time (MET)	263507880.184000	263506787.05448			
Observation start date	2006-05-08T20:36:55	2006-05-08T20:19:47			
[s] Observation end time (MET)	263525880.184000	263526216.44289			
Observation end date	2006-05-09T01:36:55	2006-05-09T01:43:36			
Read mode	TIMED	TIMED			

2.3 Aspect



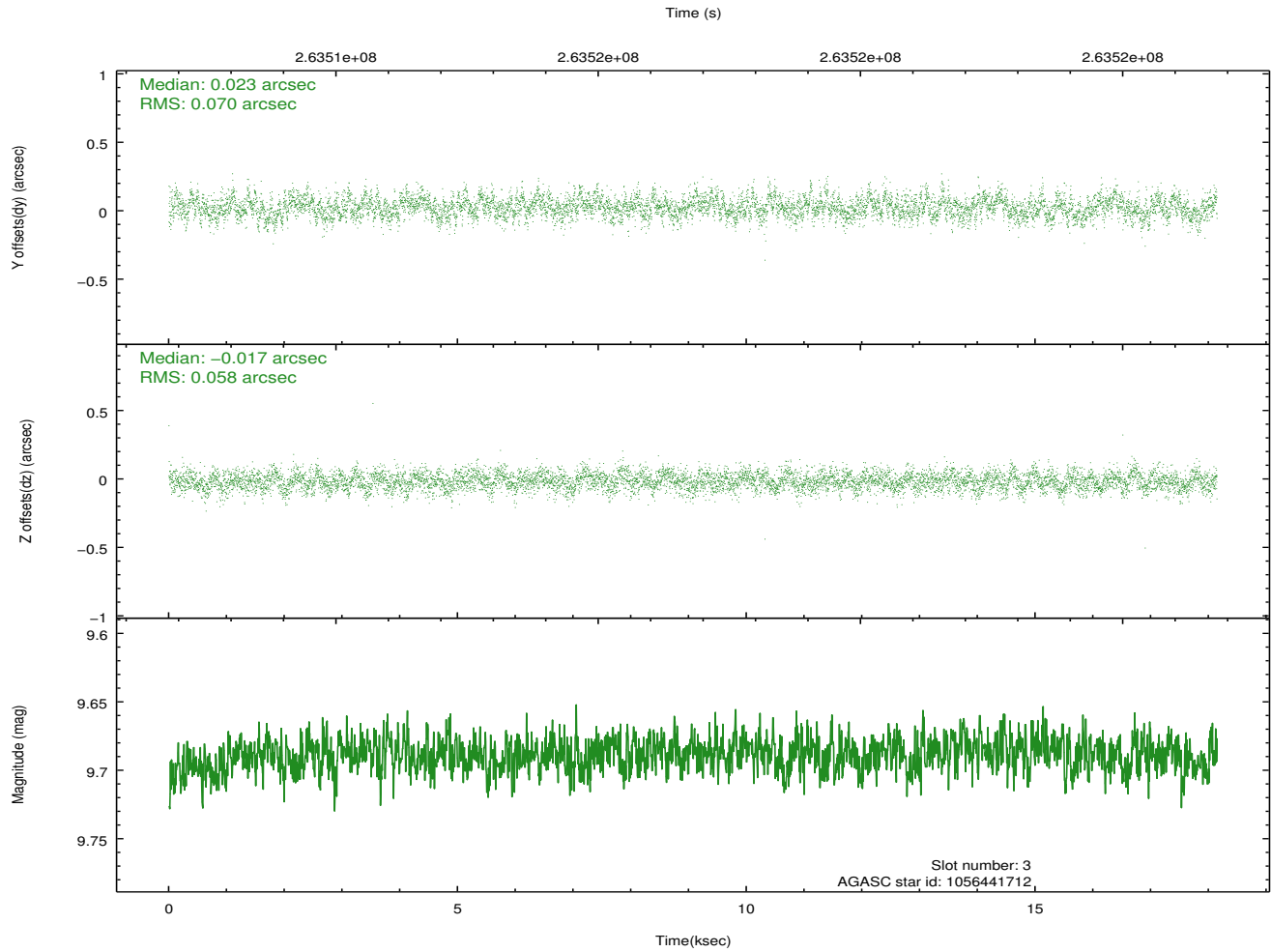
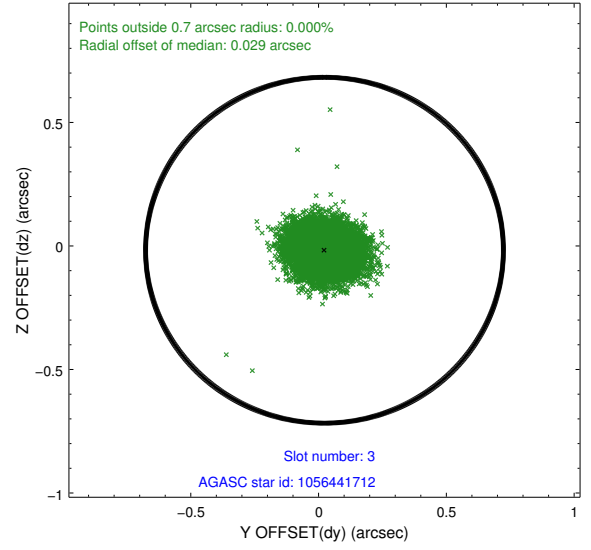
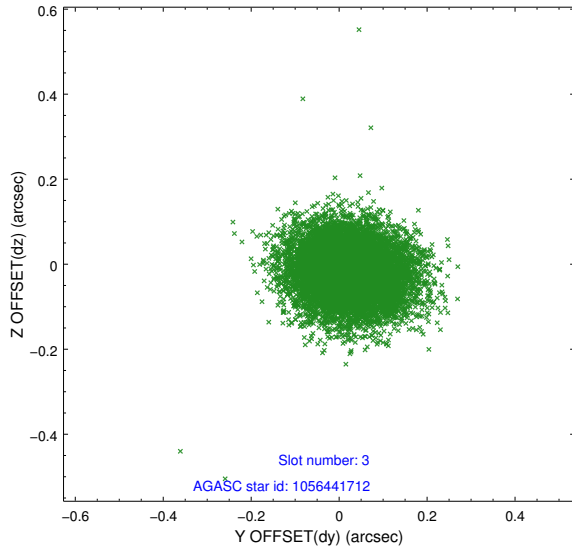


Slot Statistics

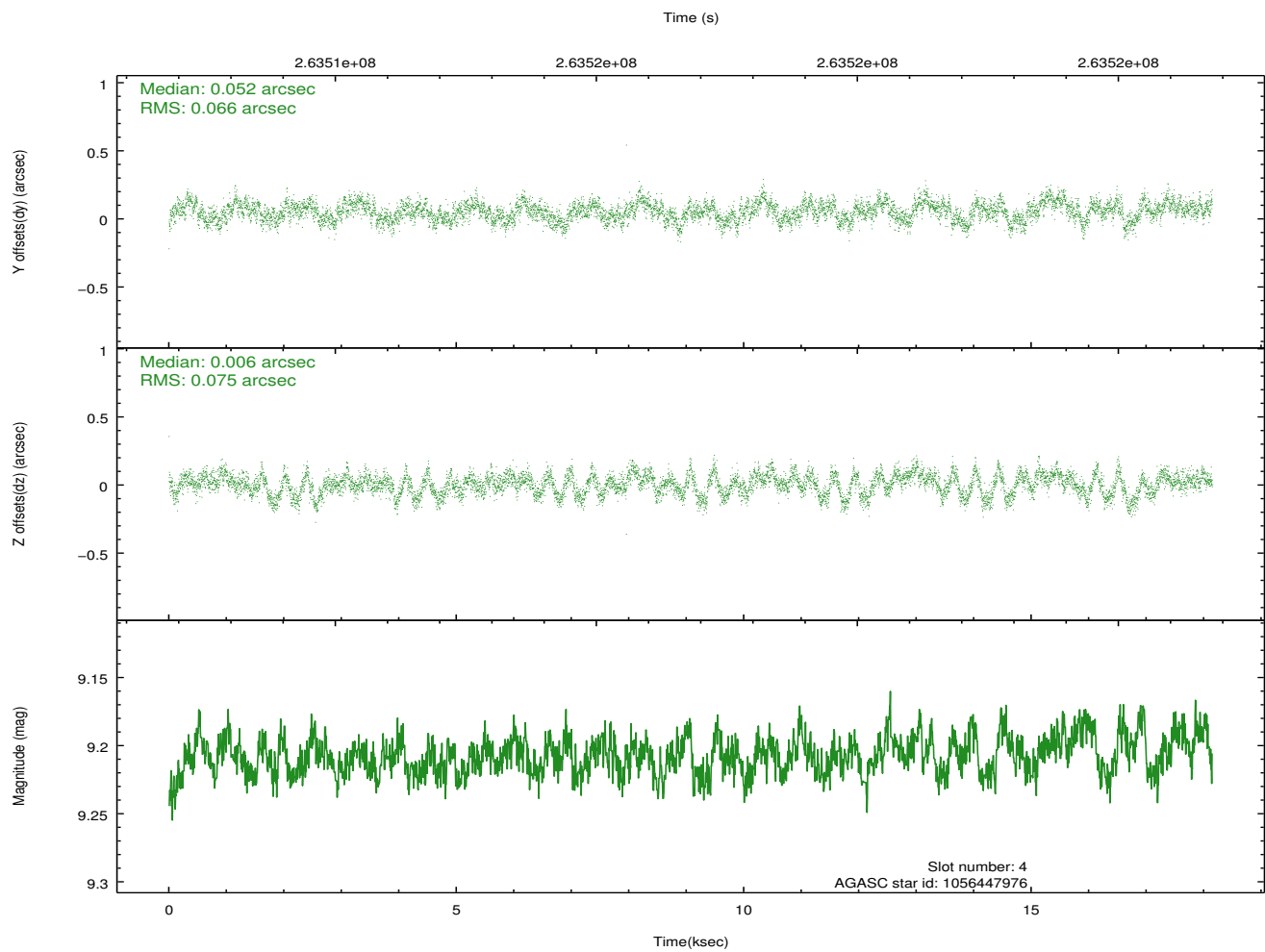
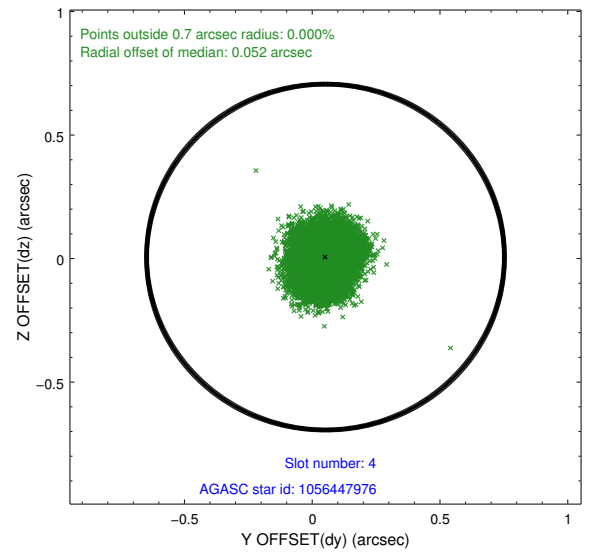
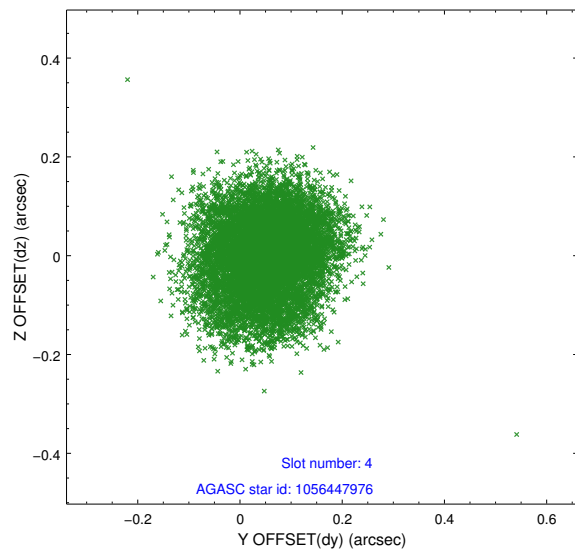
slot	status	id	mag	n_pts	med_dy	med_dz	dr1	dr2	ra	dec	mean_y	mean_z
0	FID	ACIS-I-1	7.24	4427	-0.016	-0.069	0.009	0.014	0.000000	0.000000	932.29	-835.46
1	FID	ACIS-I-4	7.18	4427	0.120	0.079	0.015	0.026	0.000000	0.000000	2152.61	1064.37
2	FID	ACIS-I-5	7.22	4425	-0.201	0.061	0.013	0.022	0.000000	0.000000	-1815.59	1062.49
3	GUIDE	1056441712	9.69	8837	0.023	-0.017	0.096	0.156	54.520980	-46.075279	1868.70	1187.88
4	GUIDE	1056447976	9.21	8842	0.052	0.006	0.108	0.169	55.622744	-45.780990	-1034.69	636.06
5	GUIDE	1056451832	9.00	8846	0.086	0.117	0.071	0.115	55.856504	-45.419355	-1855.67	-533.55
6	GUIDE	1056454440	6.67	8853	-0.084	-0.077	0.070	0.115	55.541065	-45.957882	-716.33	1223.84
7	GUIDE	1056455744	9.90	8836	-0.076	-0.024	0.124	0.200	55.071267	-46.137416	554.81	1647.88

2.4 Star Slots

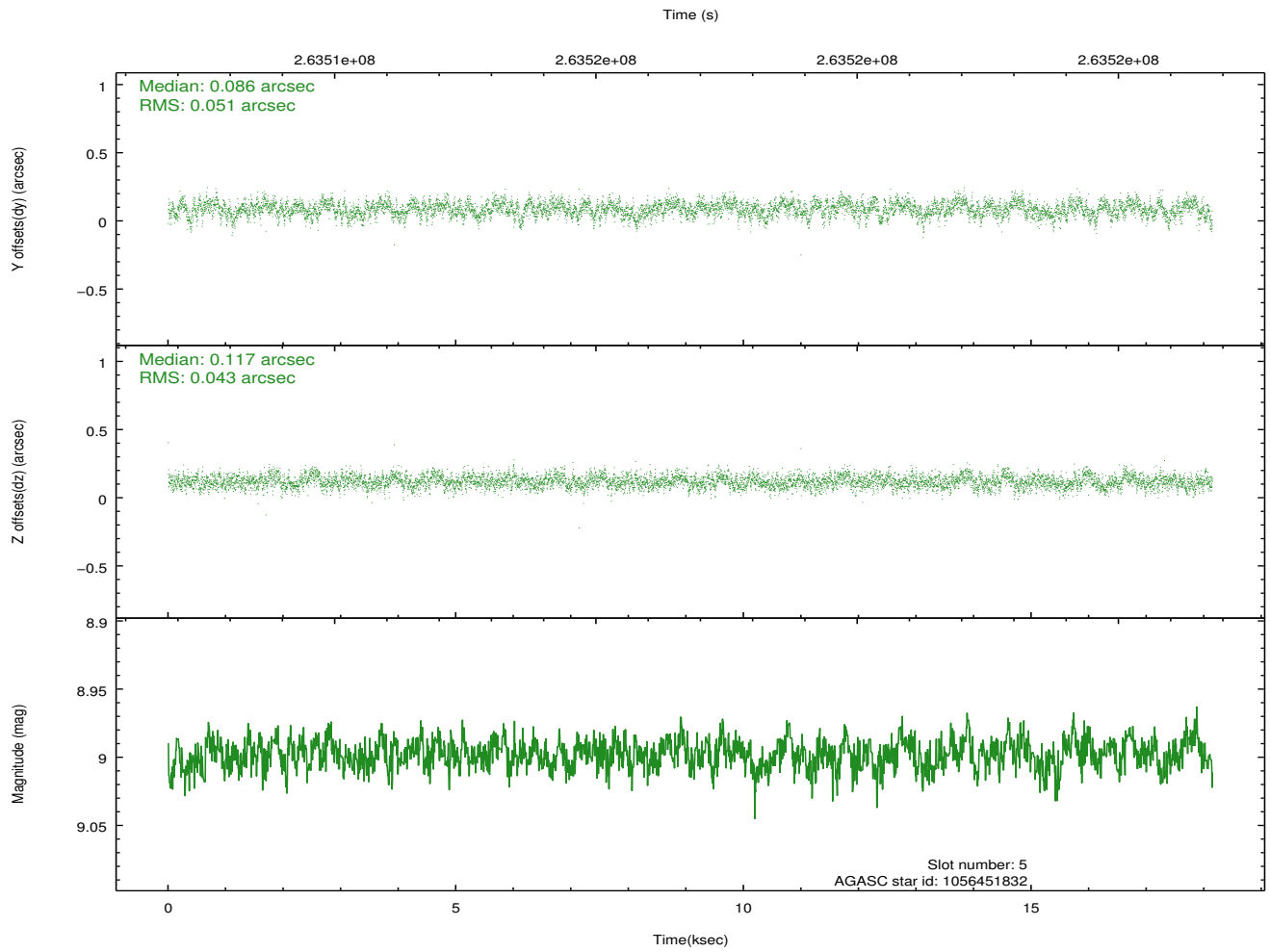
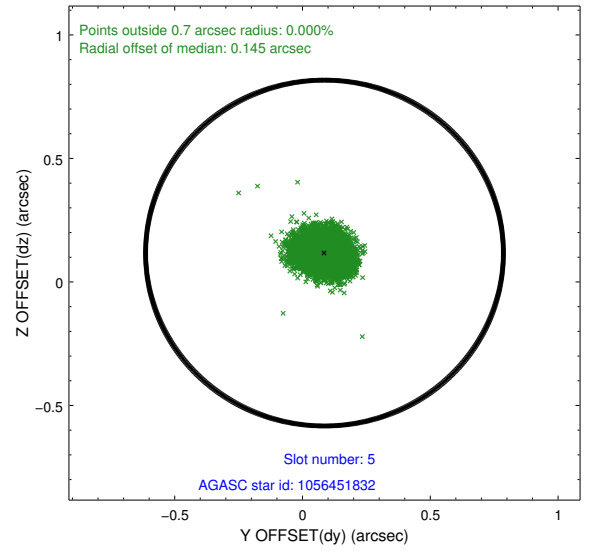
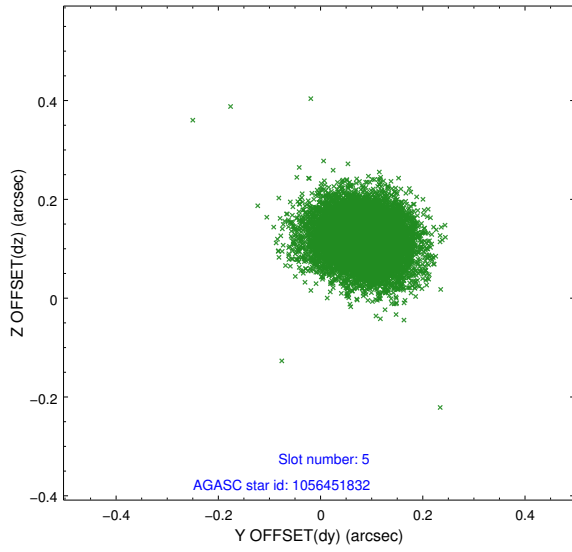
2.4.1 Slot 3



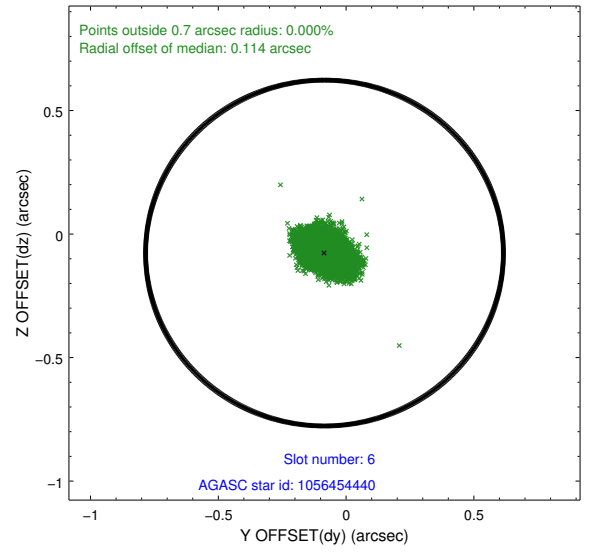
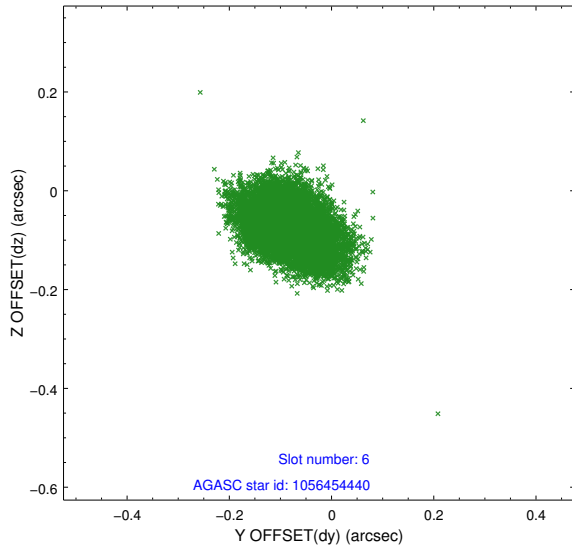
2.4.2 Slot 4



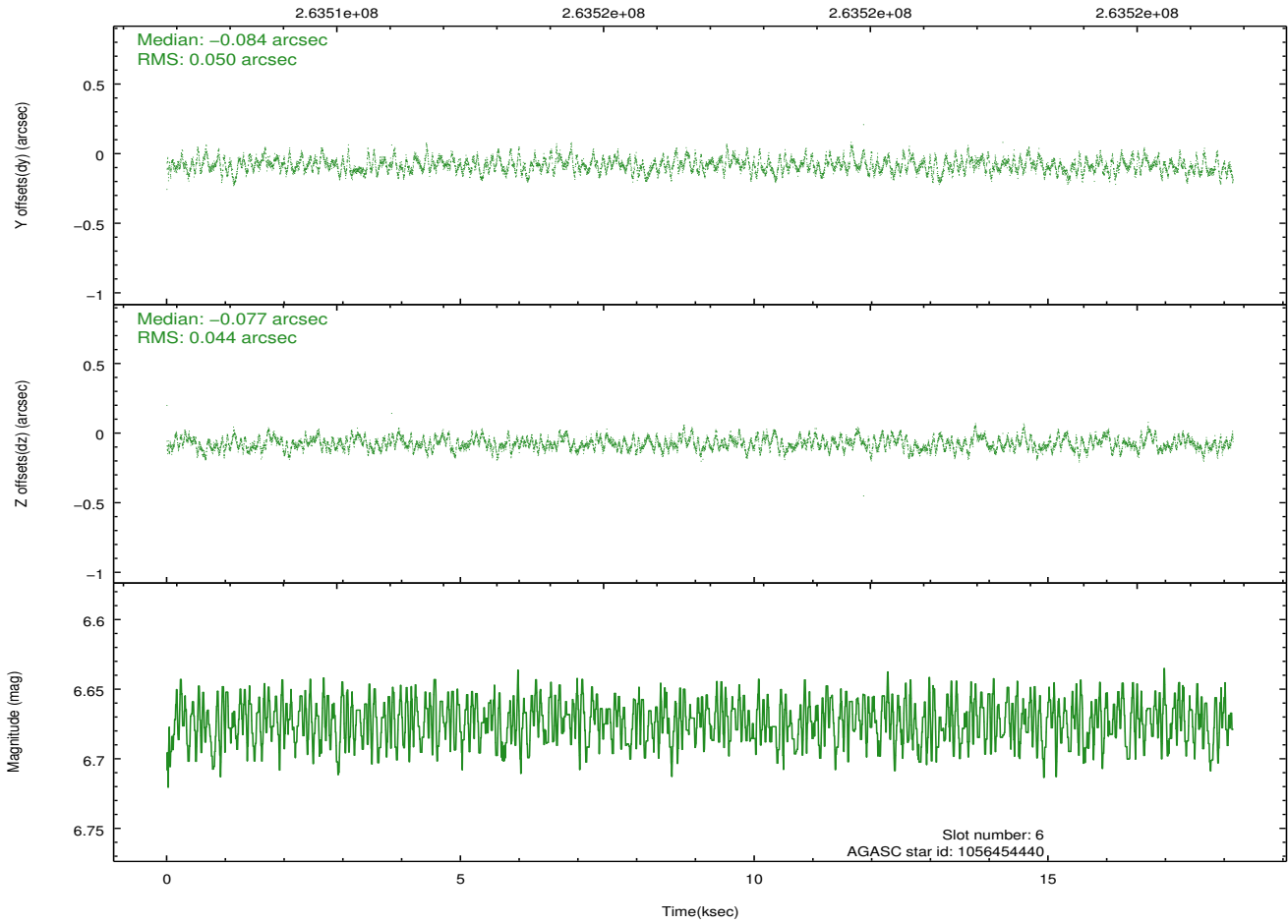
2.4.3 Slot 5



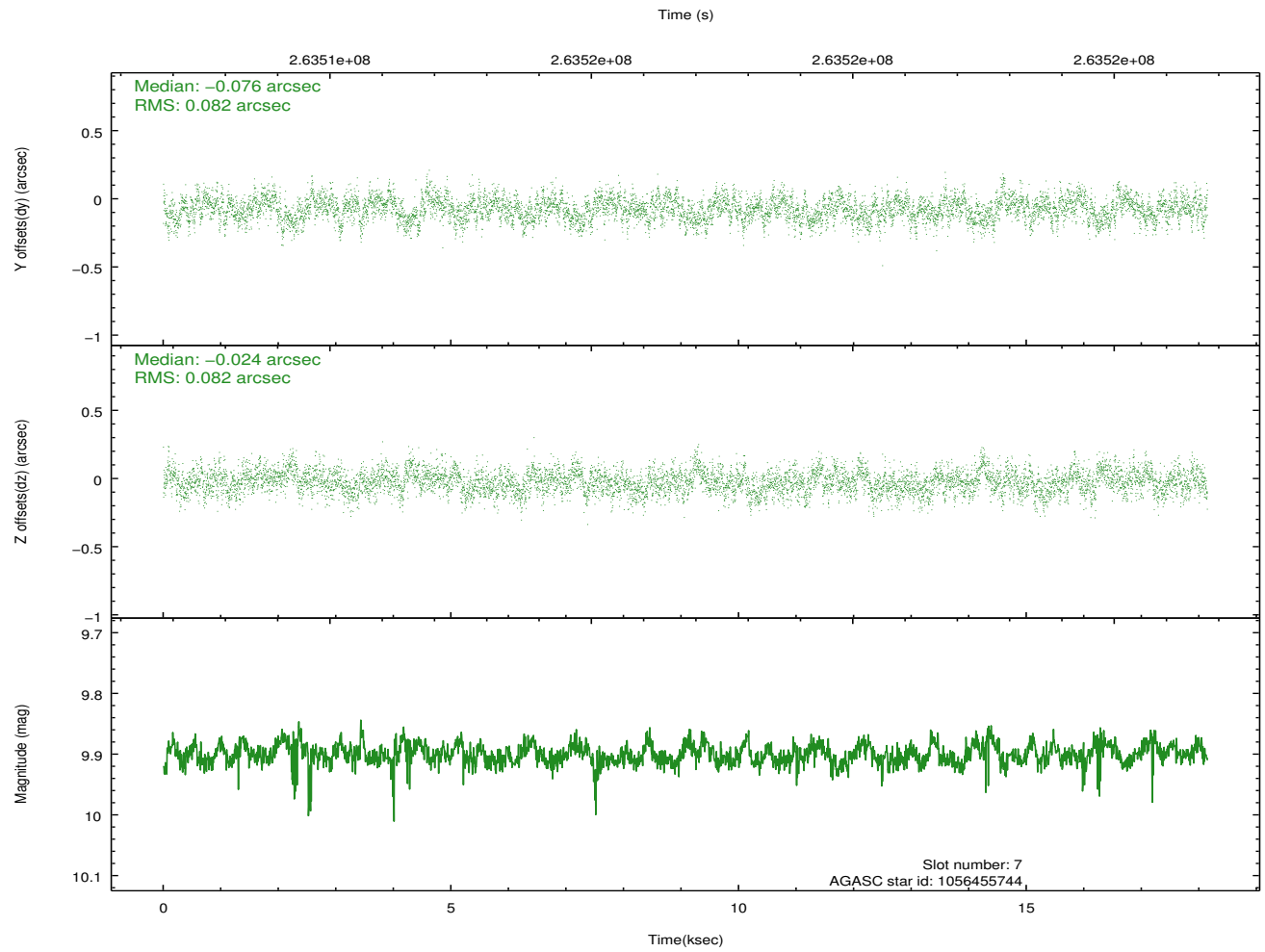
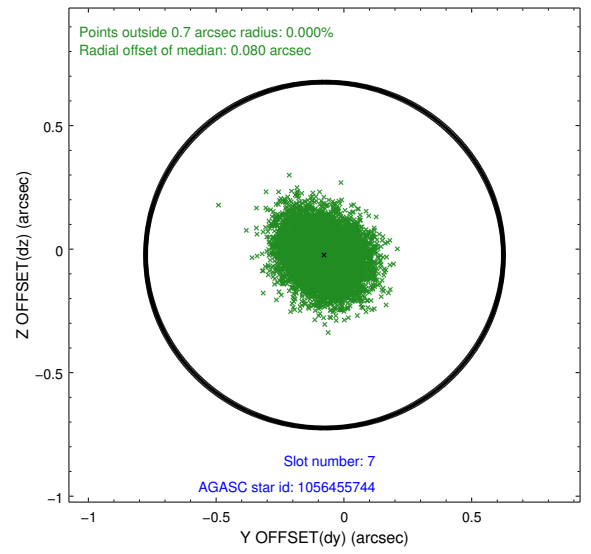
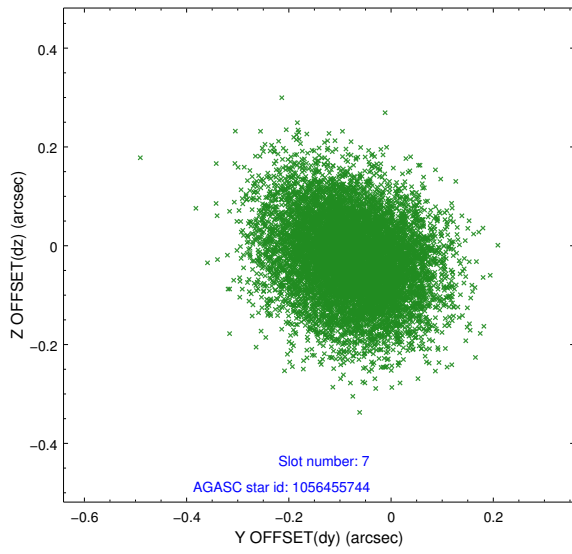
2.4.4 Slot 6



Time (s)

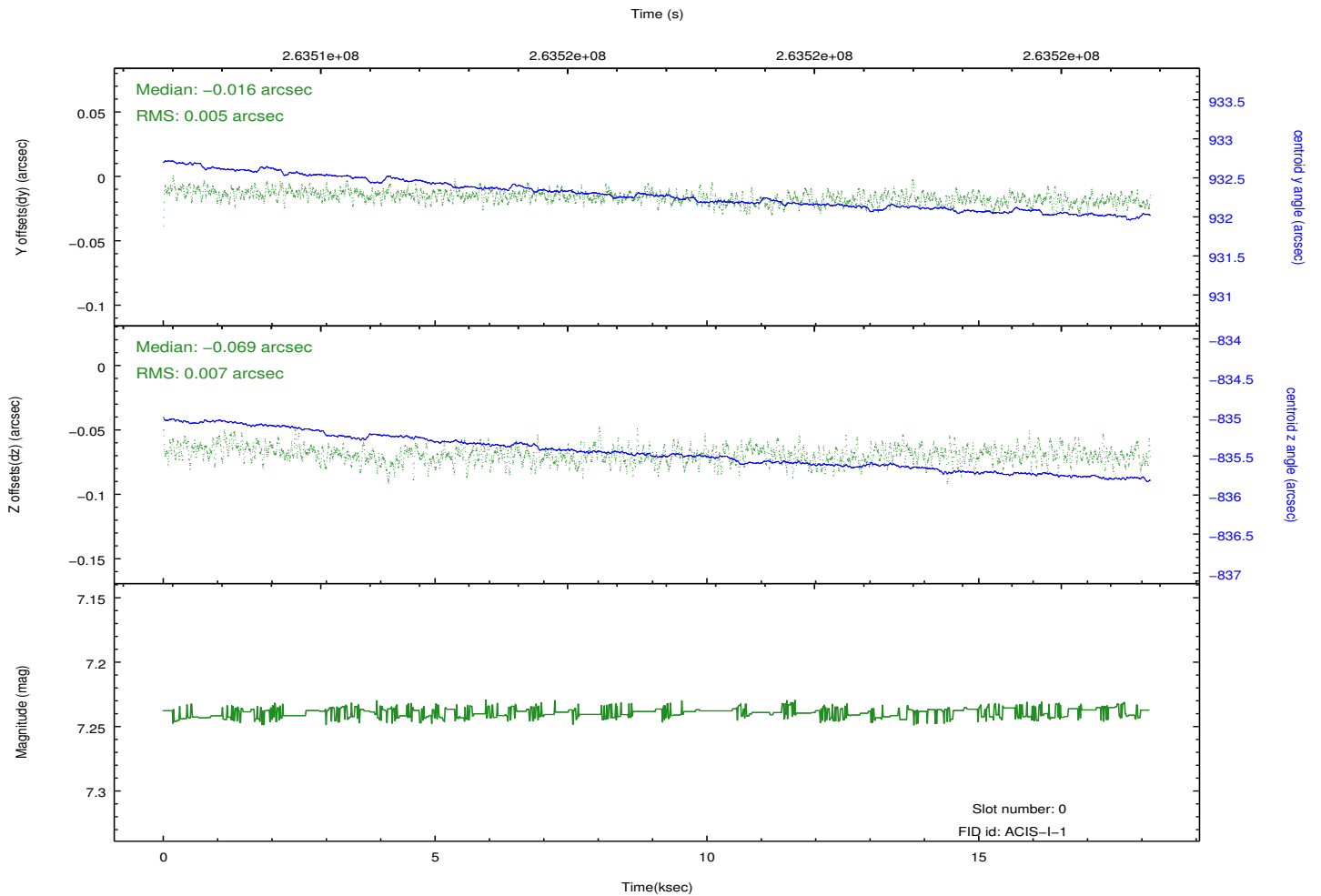
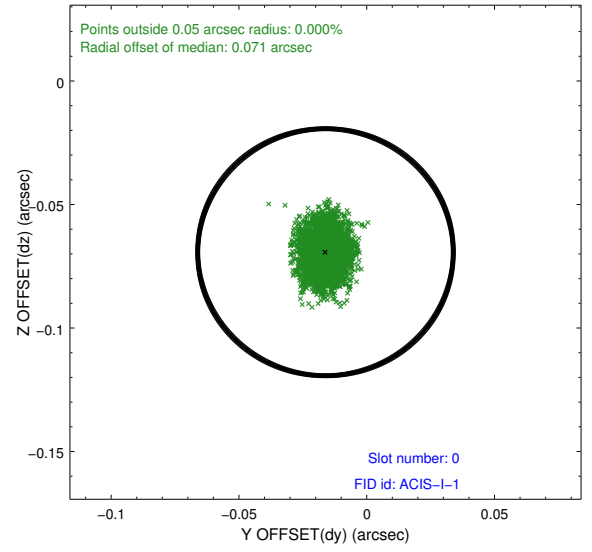
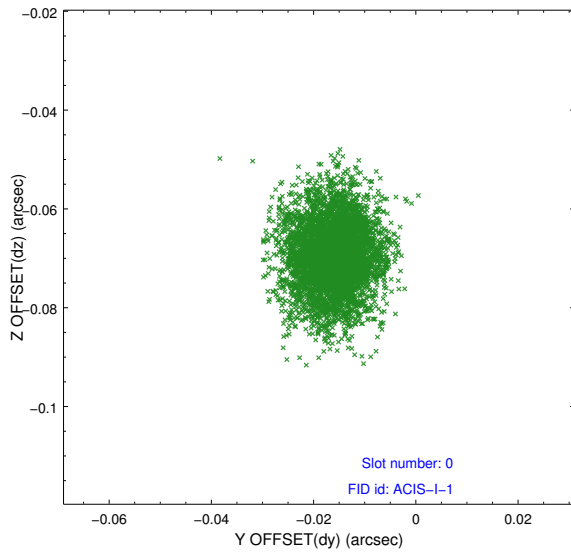


2.4.5 Slot 7

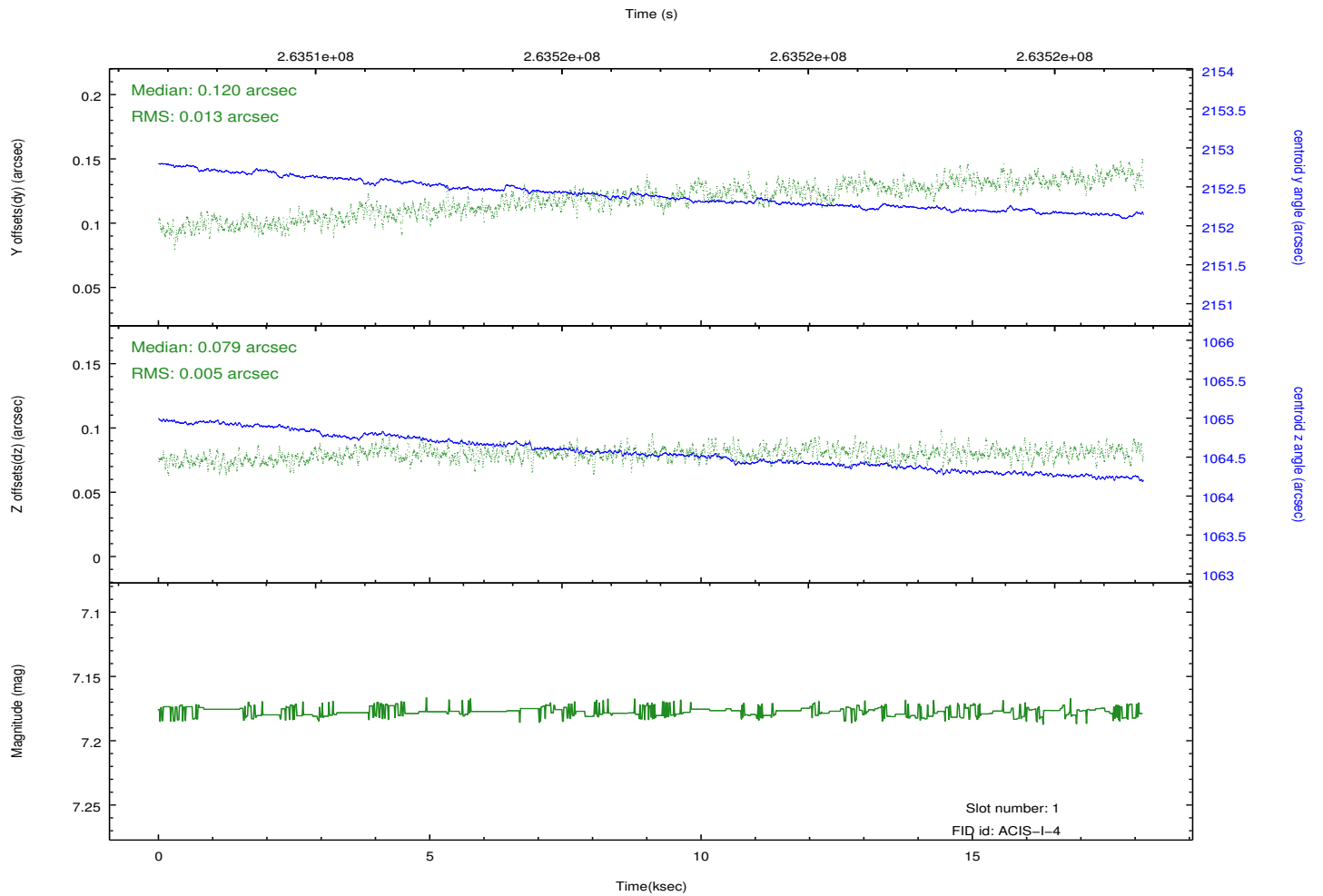
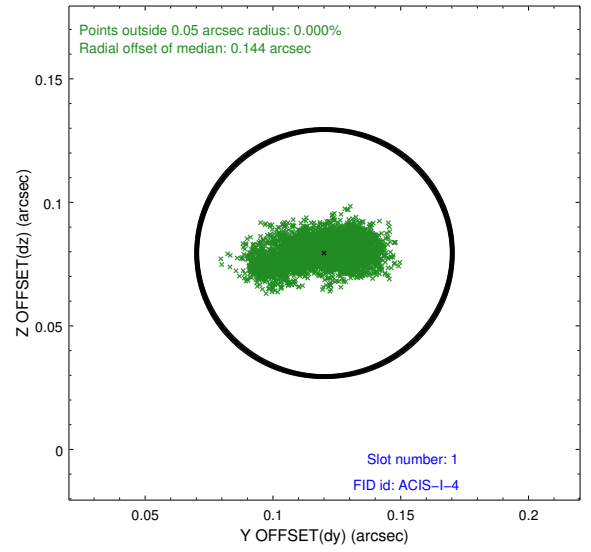
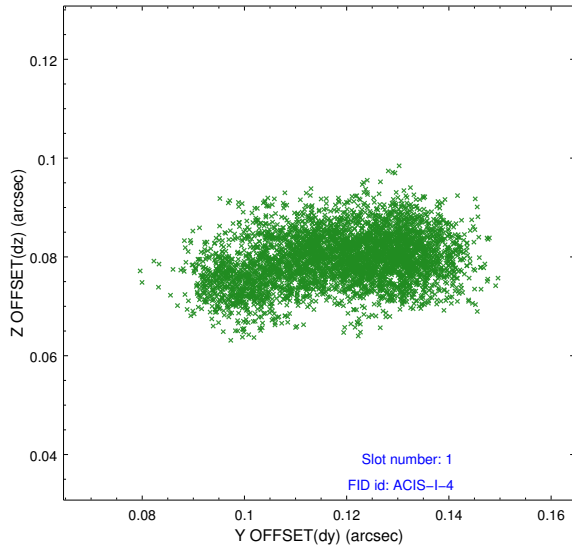


2.5 FID Slots

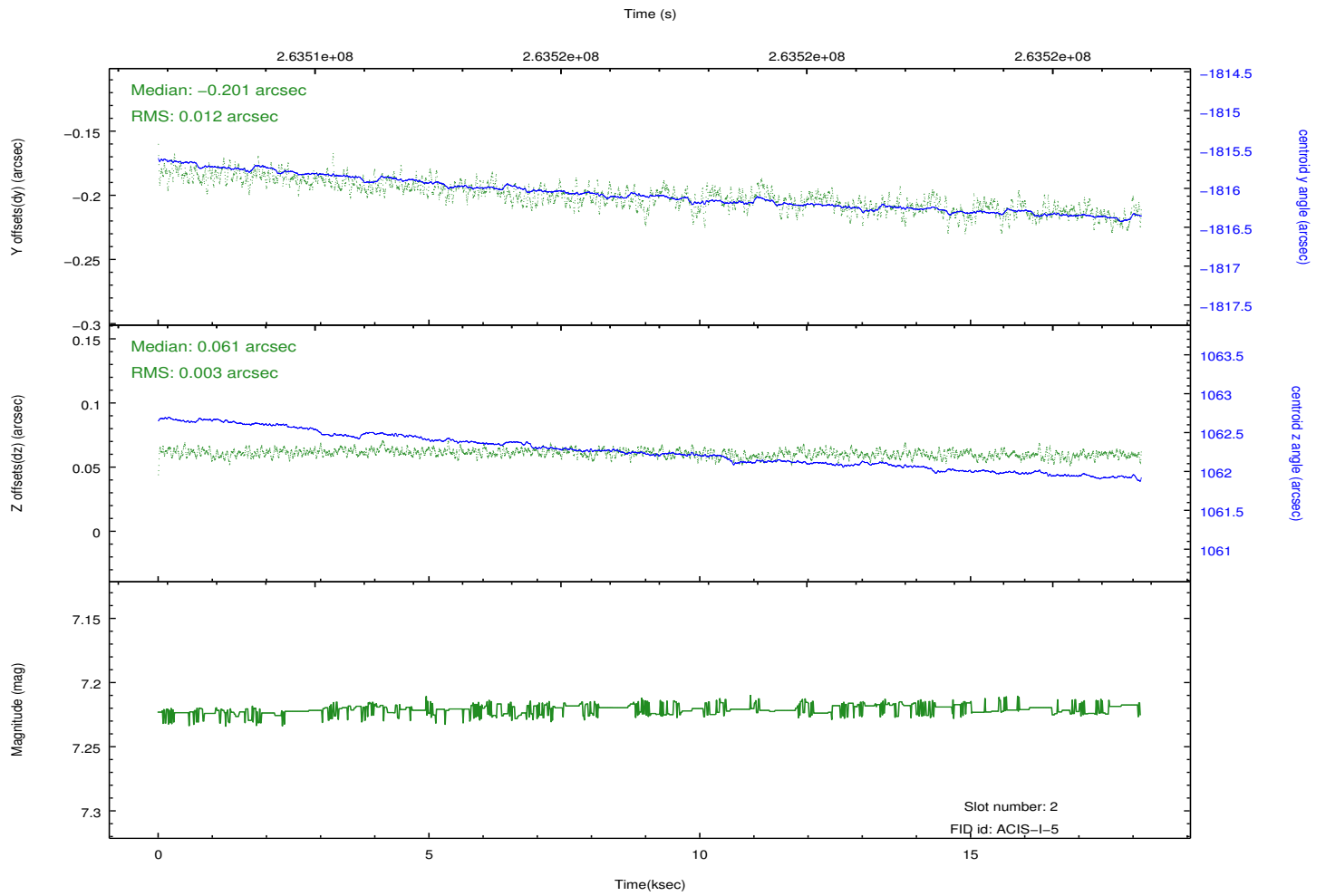
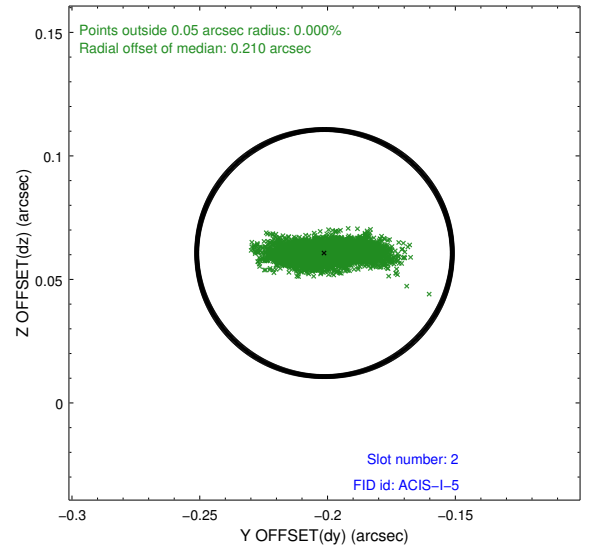
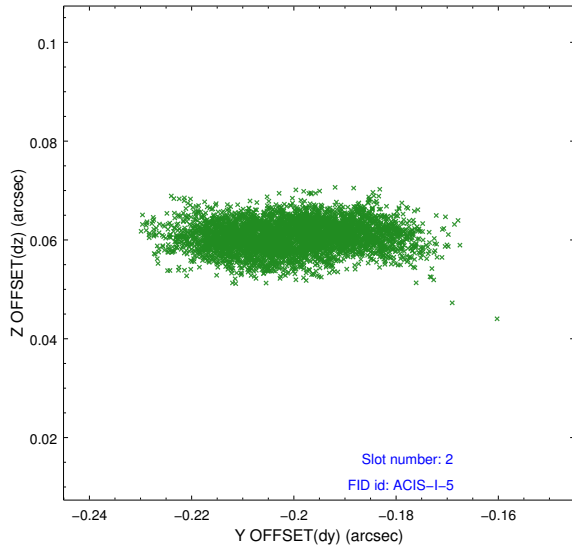
2.5.1 Slot 0



2.5.2 Slot 1



2.5.3 Slot 2



A Summary

A.1 Status

V&V Scientist	Jen Lauer
V&V Date (YYYY-MM-DD)	2012.04.02
V&V Edition	1
V&V Disposition and Status	OK
V&V Charge Time	18.134959

A.2 Comments