

V&V Reference Report

L2 ASCDS Version : 8.4.3.1

Observation 6974 - L2 Version 2
Chandra X-Ray Center

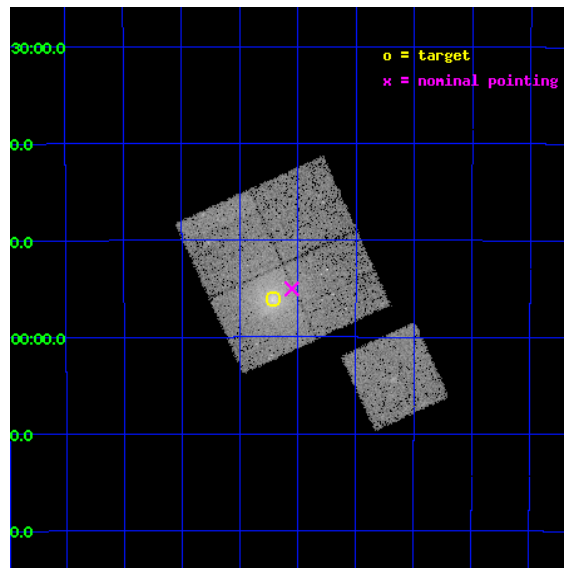
L2 Processing Date : Mar 29 2012

Contents

1	Front	2
2	OBI	3
2.1	OBI	3
2.1.1	Images	3
2.1.2	Bias	3
2.1.3	Parameters	4
2.1.4	Events	4
2.2	Compared Parameters	5
2.3	Aspect	6
2.4	Star Slots	9
2.4.1	Slot 3	9
2.4.2	Slot 4	10
2.4.3	Slot 5	11
2.4.4	Slot 6	12
2.4.5	Slot 7	13
2.5	FID Slots	14
2.5.1	Slot 0	14
2.5.2	Slot 1	15
2.5.3	Slot 2	16
A	Summary	17
A.1	Status	17
A.2	Comments	17

1 Front

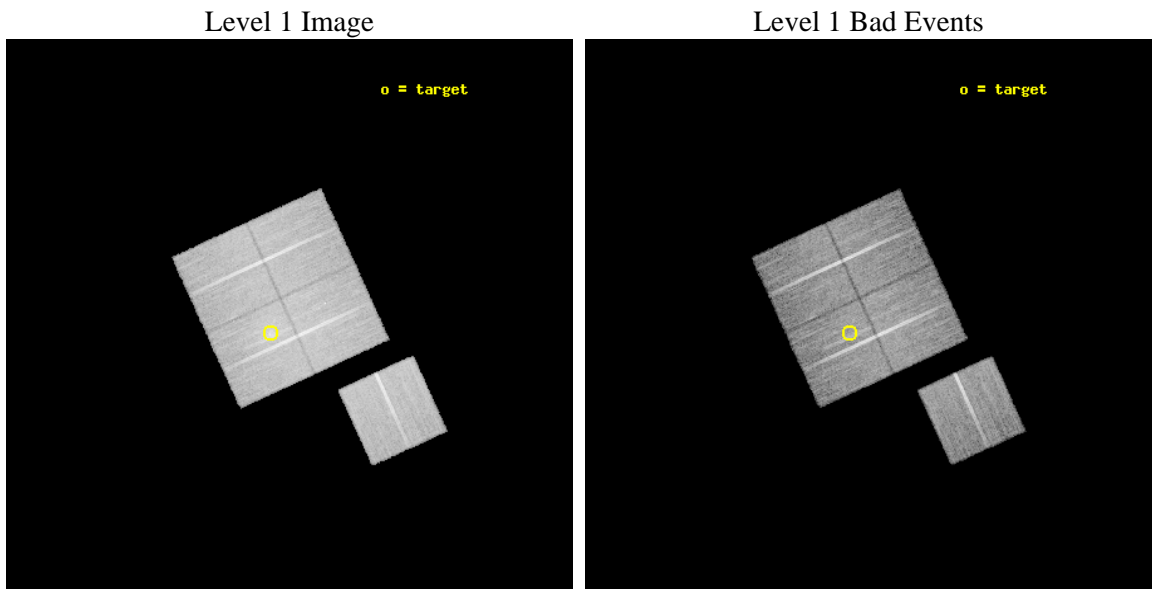
seq_num	800607	Sequence number
obs_id	6974	Observation id
title	VERIFICATION OF THE CLUSTER GAS FRACTION AS A COSMOLOGICAL TOOL	Pr
observer	Dr Maxim Markevitch	Principal investigator
object	A2717	Source name
dtcycle	0	
cycle	P	events from which exps? Prim/Second/Both
ra_targ	0.804167	Observer's specified target RA [deg]
dec_targ	-35.934444	Observer's specified target Dec [deg]
ra_nom	0.76290359230643	Nominal RA [deg]
dec_nom	-35.917034494977	Nominal Dec [deg]
roll_nom	155.41129601808	Nominal Roll [deg]
revision	2	Processing version of data
ontime	20095.883959055	Sum of GTIs [s]
livetime	19833.316440755	Livetime [s]
ontime0	20095.760839045	Sum of GTIs [s]
ontime1	20089.519898742	Sum of GTIs [s]
ontime2	20092.701928884	Sum of GTIs [s]
ontime3	20095.883959055	Sum of GTIs [s]
ontime6	20092.578808874	Sum of GTIs [s]
l2events	79095	Number of level 2 events



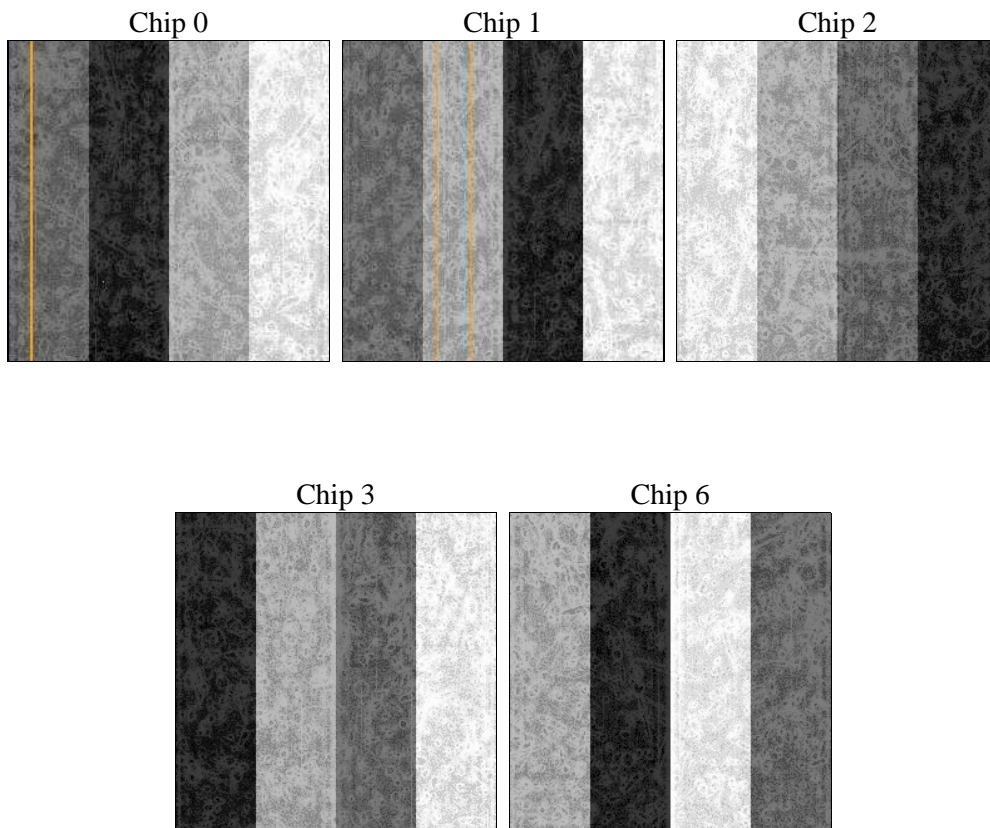
2 OBI

2.1 OBI

2.1.1 Images



2.1.2 Bias



2.1.3 Parameters

obi_num	0	Obi number	sched_exp_time	20000.000000	[s] Scheduled observation exposure time
ascdsver	8.4.3.1	Processing system revision	ontime	20095.883959055	Sum of GTIs [s]
caldsver	4.4.8	 	ontime0	20095.760839045	Sum of GTIs [s]
date	2012-03-29T14:08:45	Date and time of file creation	ontime1	20089.519898742	Sum of GTIs [s]
revision	2	Processing version of data	ontime2	20092.701928884	Sum of GTIs [s]
			ontime3	20095.883959055	Sum of GTIs [s]
			ontime6	20092.578808874	Sum of GTIs [s]
			l1events	743319	Number of level 1 events

2.1.4 Events

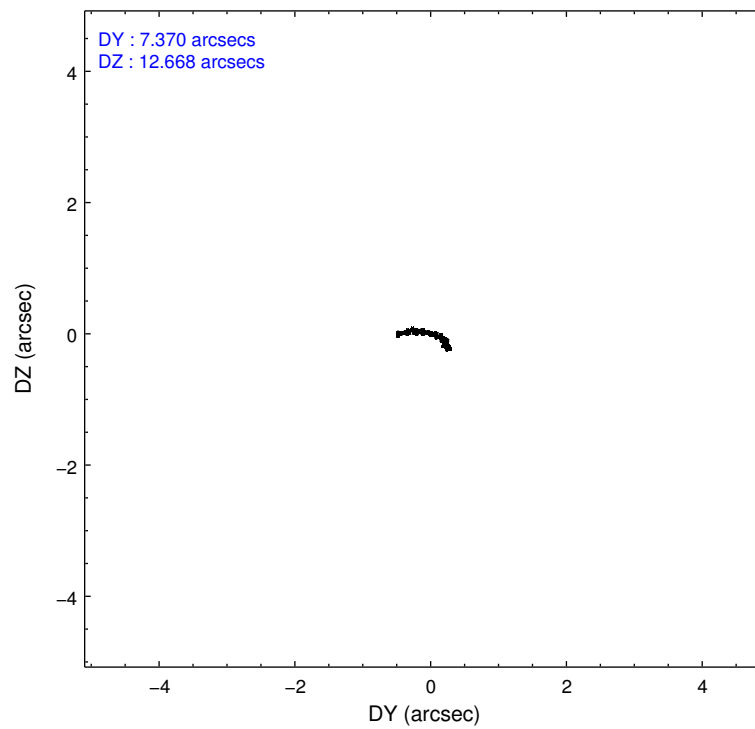
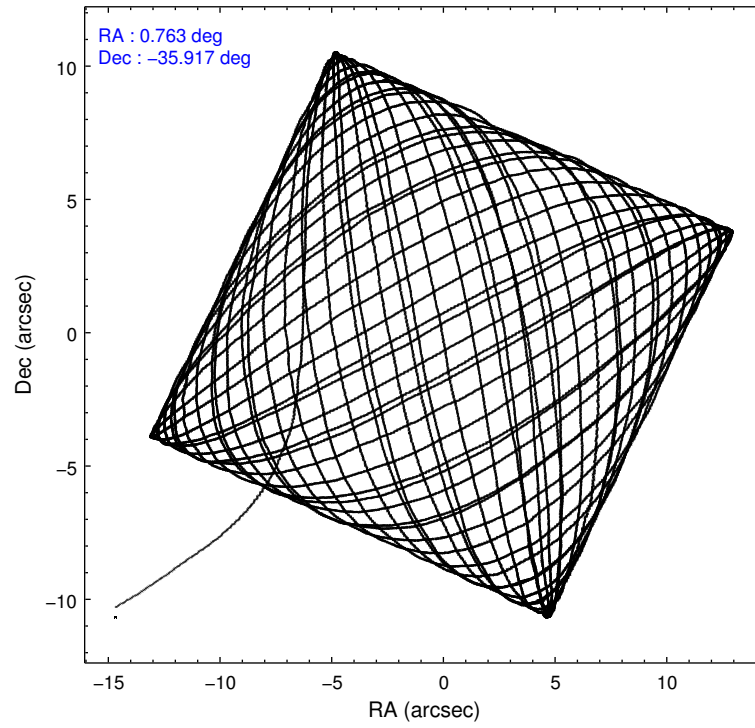
	ccd 0	ccd 1	ccd 2	ccd 3	ccd 6
level 1 events	137896	138977	160465	159387	146594
rejected events	123152	121109	143769	131369	131287
rejected %	89%	87%	89%	82%	89%

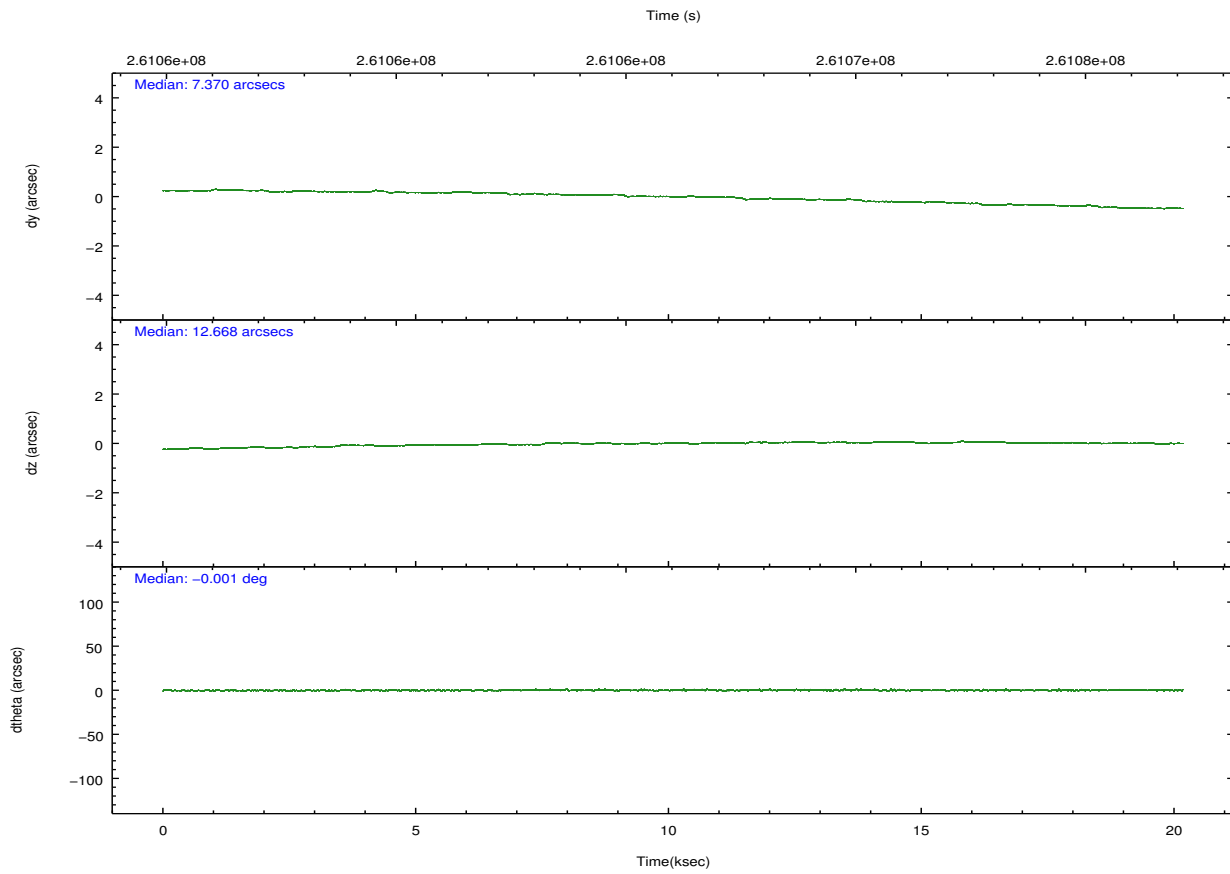
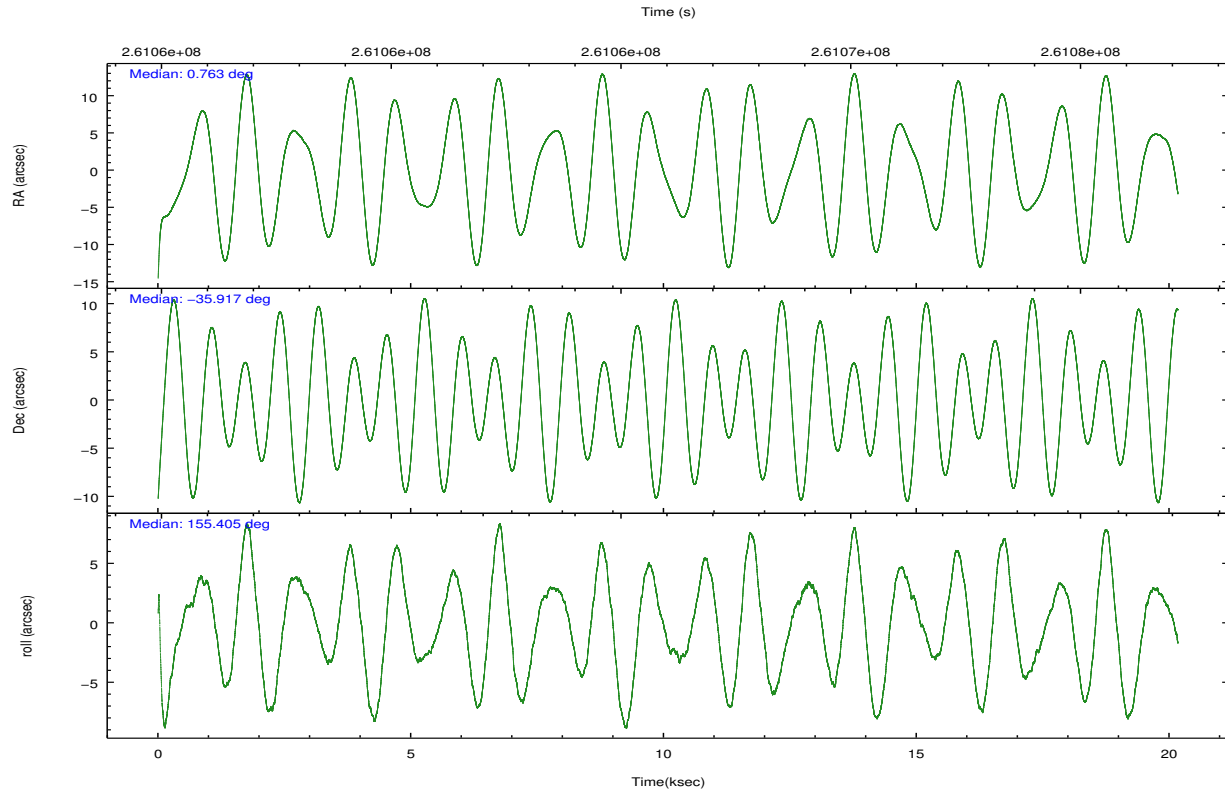
	ccd 0	ccd 1	ccd 2	ccd 3	ccd 6
grade 0 events	5382	7210	7253	17066	5504
	3%	5%	4%	10%	3%
grade 1 events	64	94	101	156	64
	0%	0%	0%	0%	0%
grade 2 events	3327	3845	3591	4244	3333
	2%	2%	2%	2%	2%
grade 3 events	1640	1854	1589	1909	1671
	1%	1%	0%	1%	1%
grade 4 events	1607	1812	1691	1830	1720
	1%	1%	1%	1%	1%
grade 5 events	4887	5543	4762	6039	5760
	3%	3%	2%	3%	3%
grade 6 events	2792	3150	2575	2975	3080
	2%	2%	1%	1%	2%
grade 7 events	118197	115469	138903	125168	125462
	85%	83%	86%	78%	85%

2.2 Compared Parameters

Parameter	Planned	Actual	Parameter	Planned	Actual
Instrument	ACIS	ACIS	Obspar format version number	7	7
Detector	ACIS-01236	ACIS-01236	Obspar file type	PREDICTED	ACTUAL
Grating	NONE	NONE	Obspar update status	NONE	UPDATED
Data mode	VFAINT	VFAINT	Number of optional ACIS chips dropped	0	0
Observation mode	POINTING	POINTING	On-chip summing requested	N	N
[deg] Pointing RA	0.796572	0.7629035923064293	Subarray requested	NONE	NONE
[deg] Pointing Dec	-35.914350	-35.91703449497729	Alternating exposures requested	N	N
[deg] Pointing Roll	155.222357	155.4112960180782	[s] Primary exposure time	0.000000	3.1
[mm] SIM focus pos	-0.782348	-0.7809083437167272			
[mm] SIM defocus	0	0.001439871863259334			
[mm] SIM translation stage pos	-227.592463	-227.5933067819097			
[mm] SIM translation stage offset	-6	-5.999146221020027			
[s] Observation start time (MET)	261056113.184000	261055161.19016			
Observation start date	2006-04-10T11:34:08	2006-04-10T11:19:21			
[s] Observation end time (MET)	261076113.184000	261076879.40367			
Observation end date	2006-04-10T17:07:28	2006-04-10T17:21:19			
Read mode	TIMED	TIMED			

2.3 Aspect



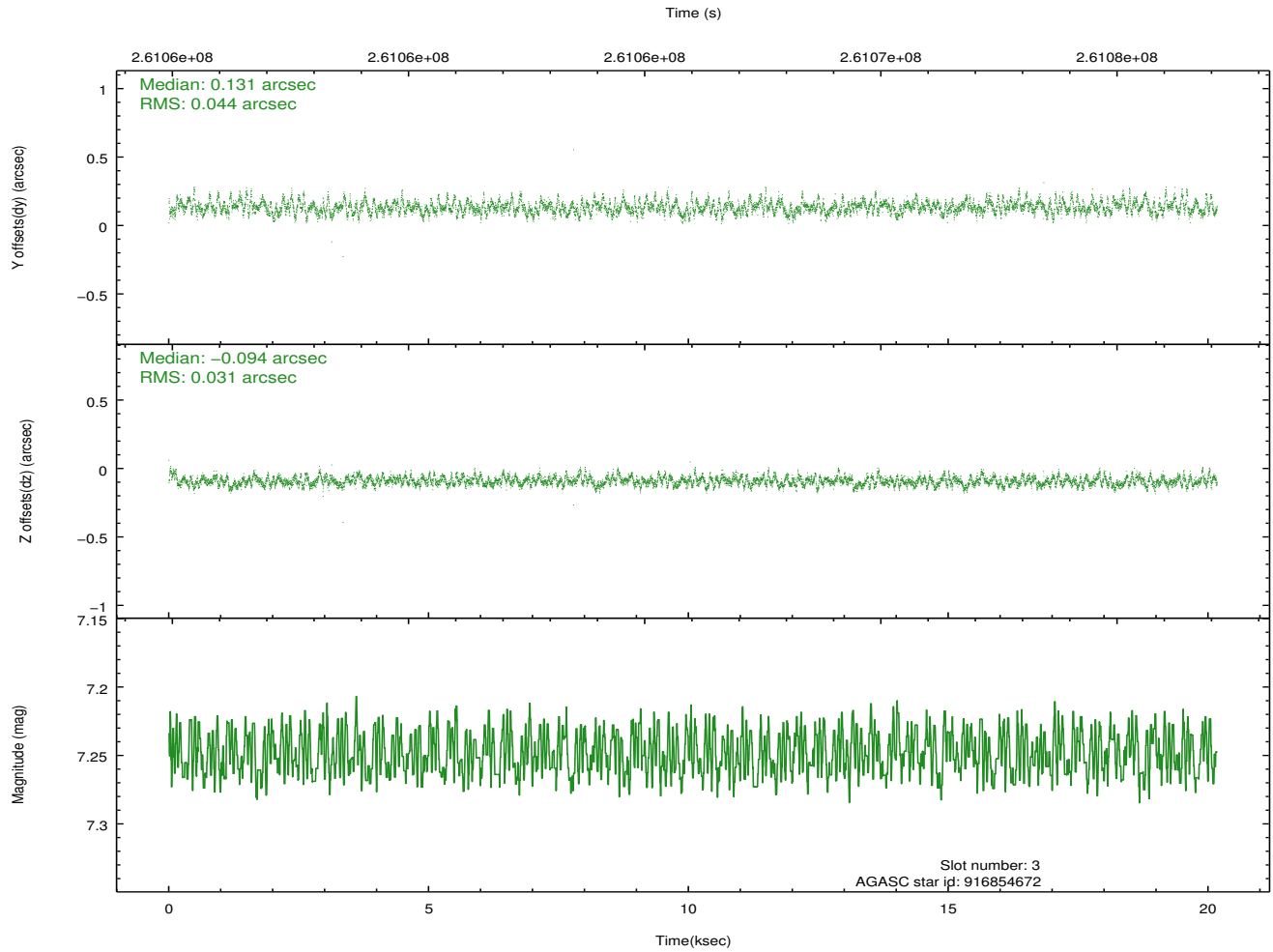
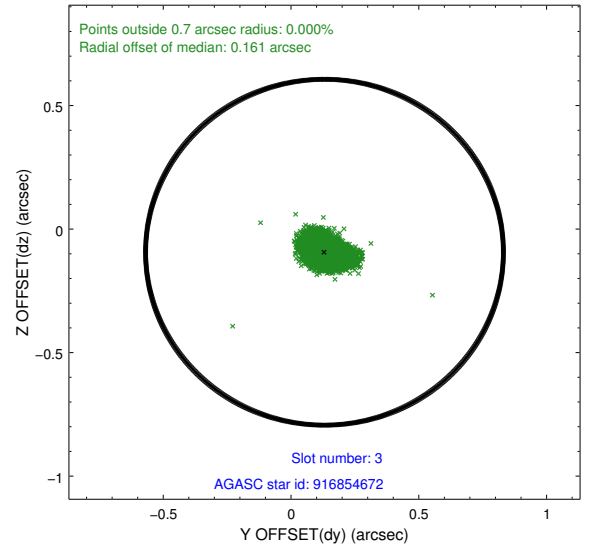
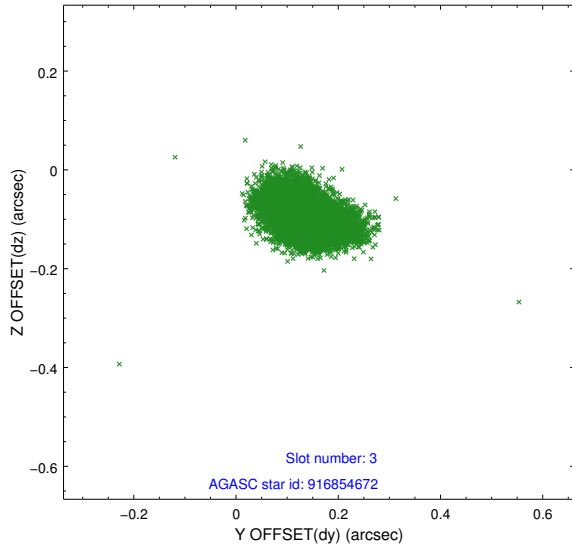


Slot Statistics

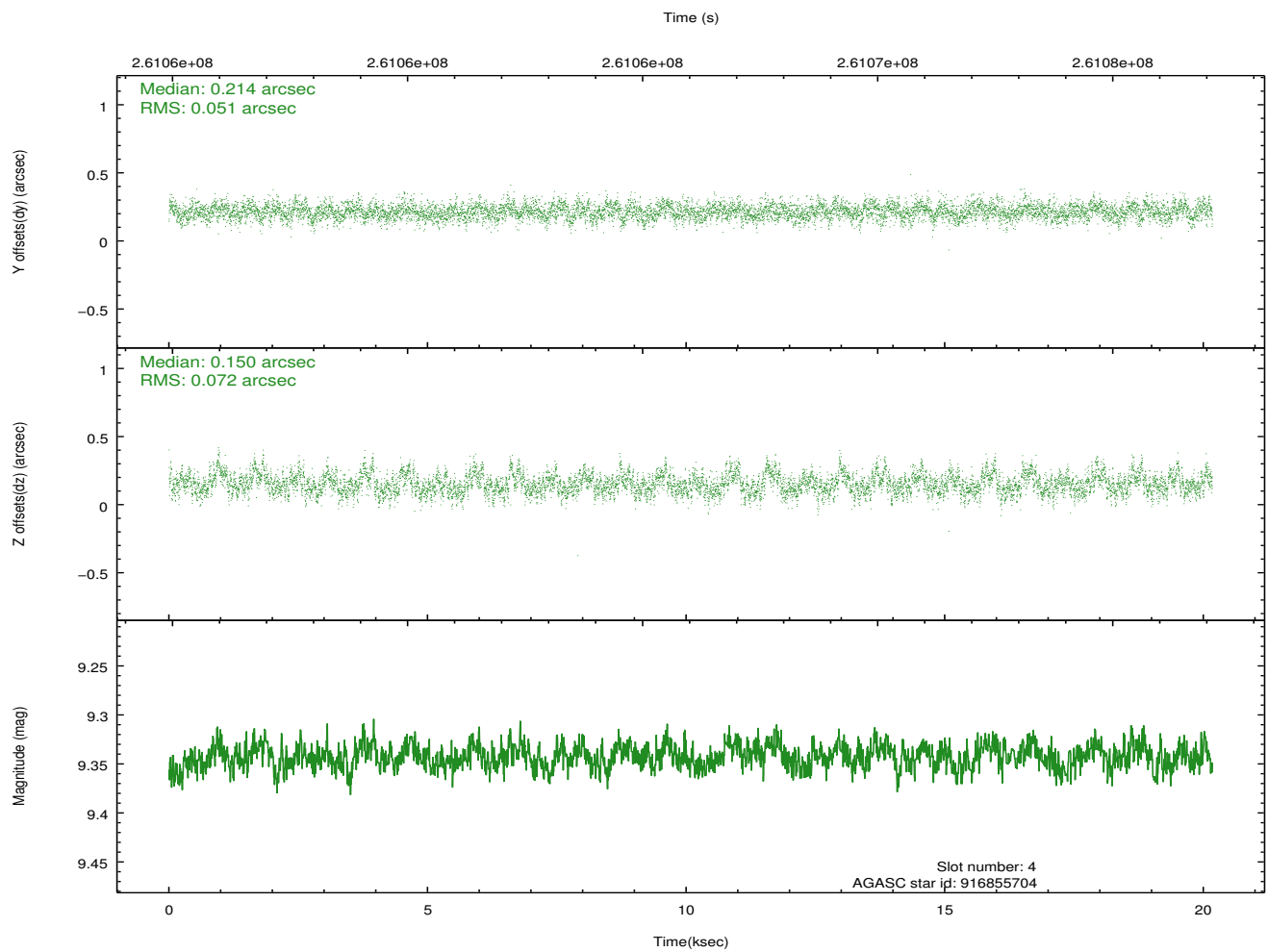
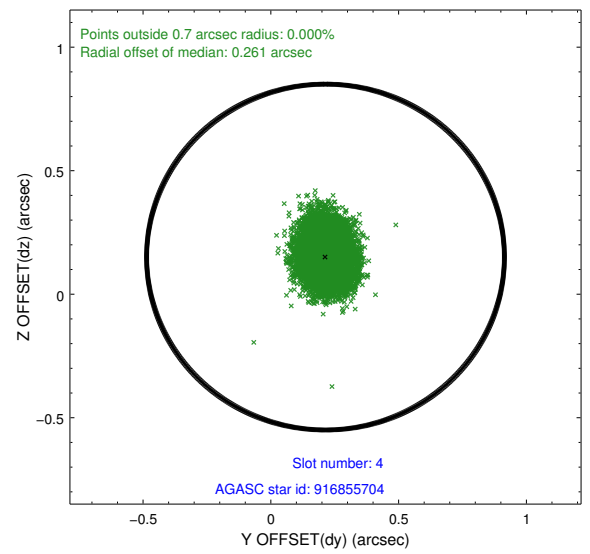
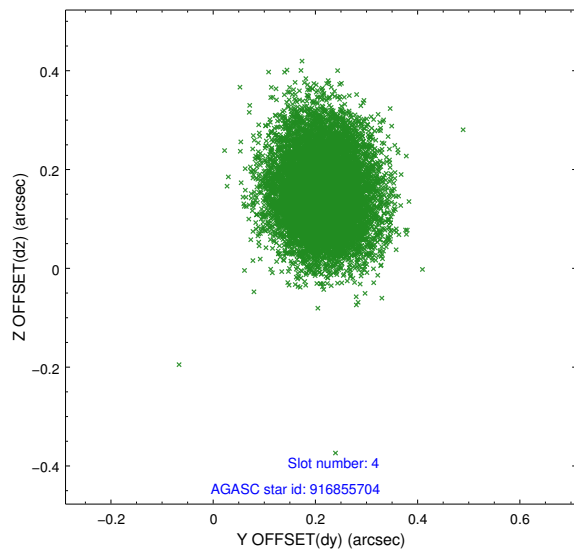
slot	status	id	mag	n_pts	med_dy	med_dz	dr1	dr2	ra	dec	mean_y	mean_z
0	FID	ACIS-I-1	7.23	4920	0.121	-0.099	0.010	0.018	0.000000	0.000000	932.33	-959.43
1	FID	ACIS-I-5	7.23	4921	-0.241	0.108	0.011	0.018	0.000000	0.000000	-1815.99	938.21
2	FID	ACIS-I-6	7.26	4918	0.028	0.062	0.009	0.015	0.000000	0.000000	397.64	1582.83
3	GUIDE	916854672	7.25	9840	0.131	-0.094	0.057	0.095	0.859492	-36.251194	-674.25	1024.25
4	GUIDE	916855704	9.34	9831	0.214	0.150	0.093	0.154	0.830412	-35.553649	454.26	-1220.19
5	GUIDE	916855800	8.28	9841	-0.232	0.010	0.074	0.121	0.880844	-35.602226	247.08	-1123.45
6	GUIDE	916857840	7.95	9841	-0.081	-0.042	0.052	0.086	0.040896	-35.960224	1926.53	1080.74
7	GUIDE	916858168	8.42	9838	-0.032	-0.025	0.052	0.087	0.055896	-35.993234	1836.40	1169.94

2.4 Star Slots

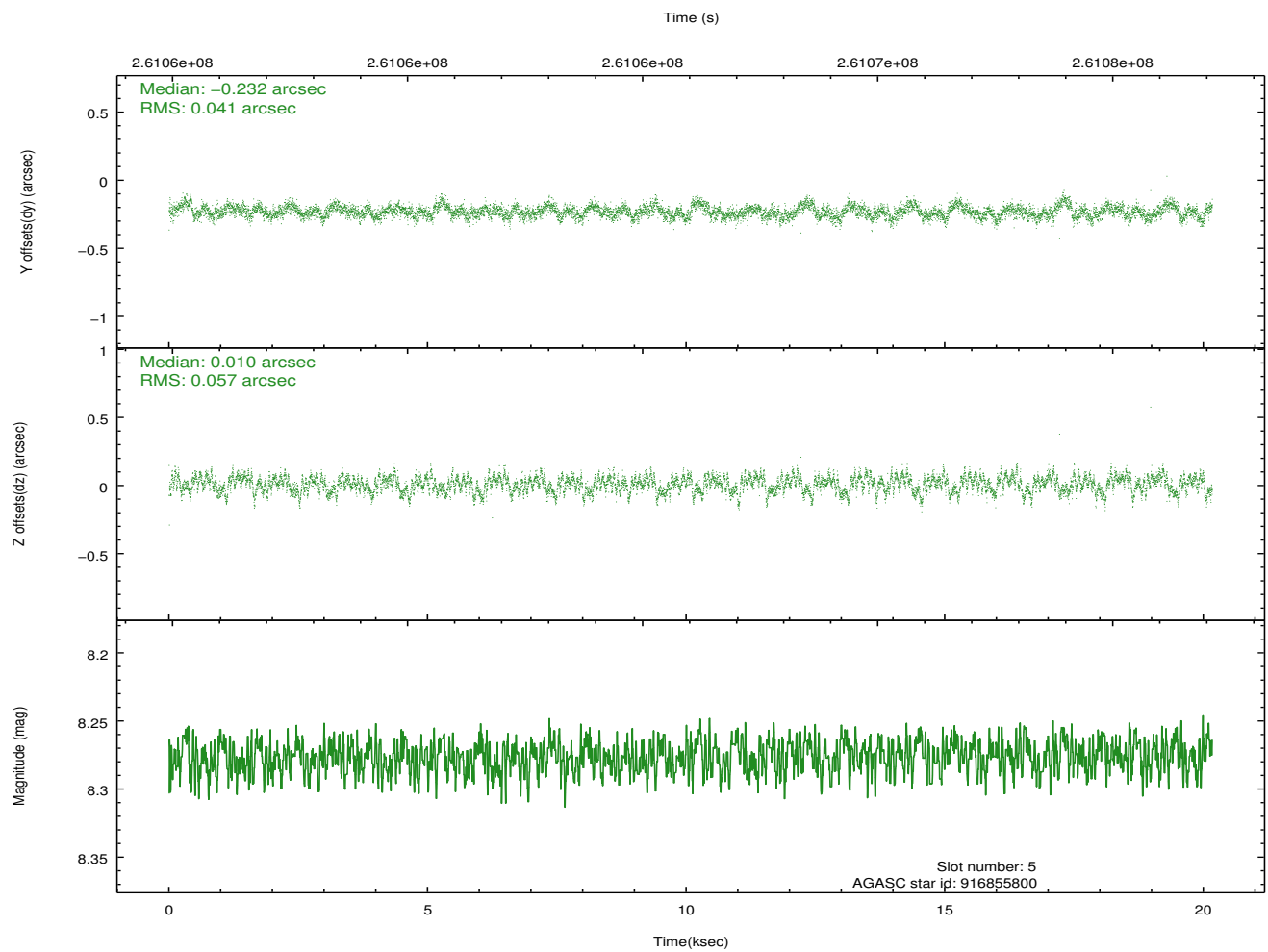
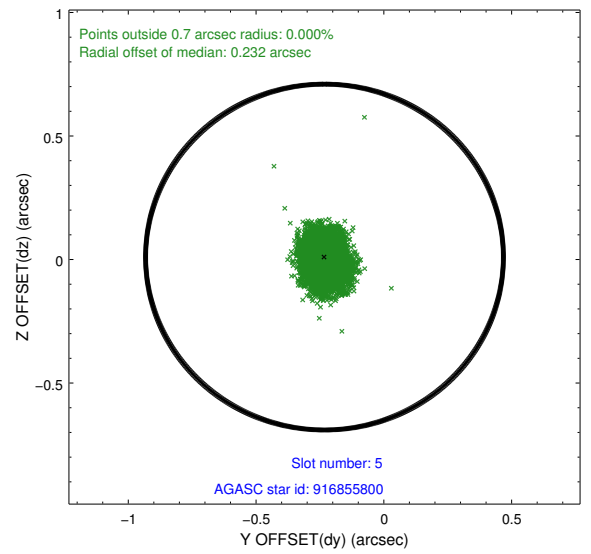
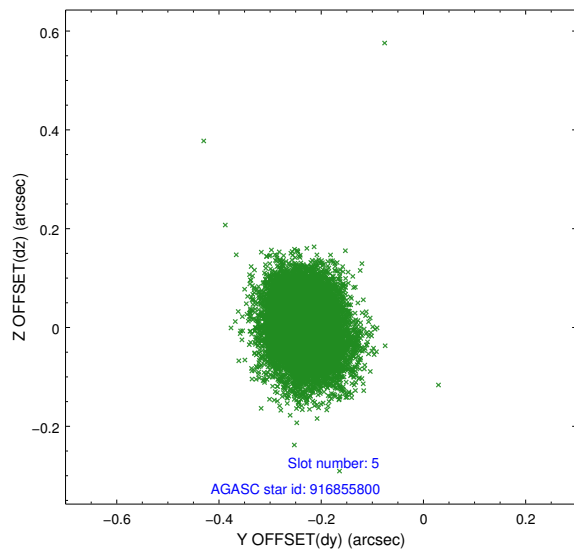
2.4.1 Slot 3



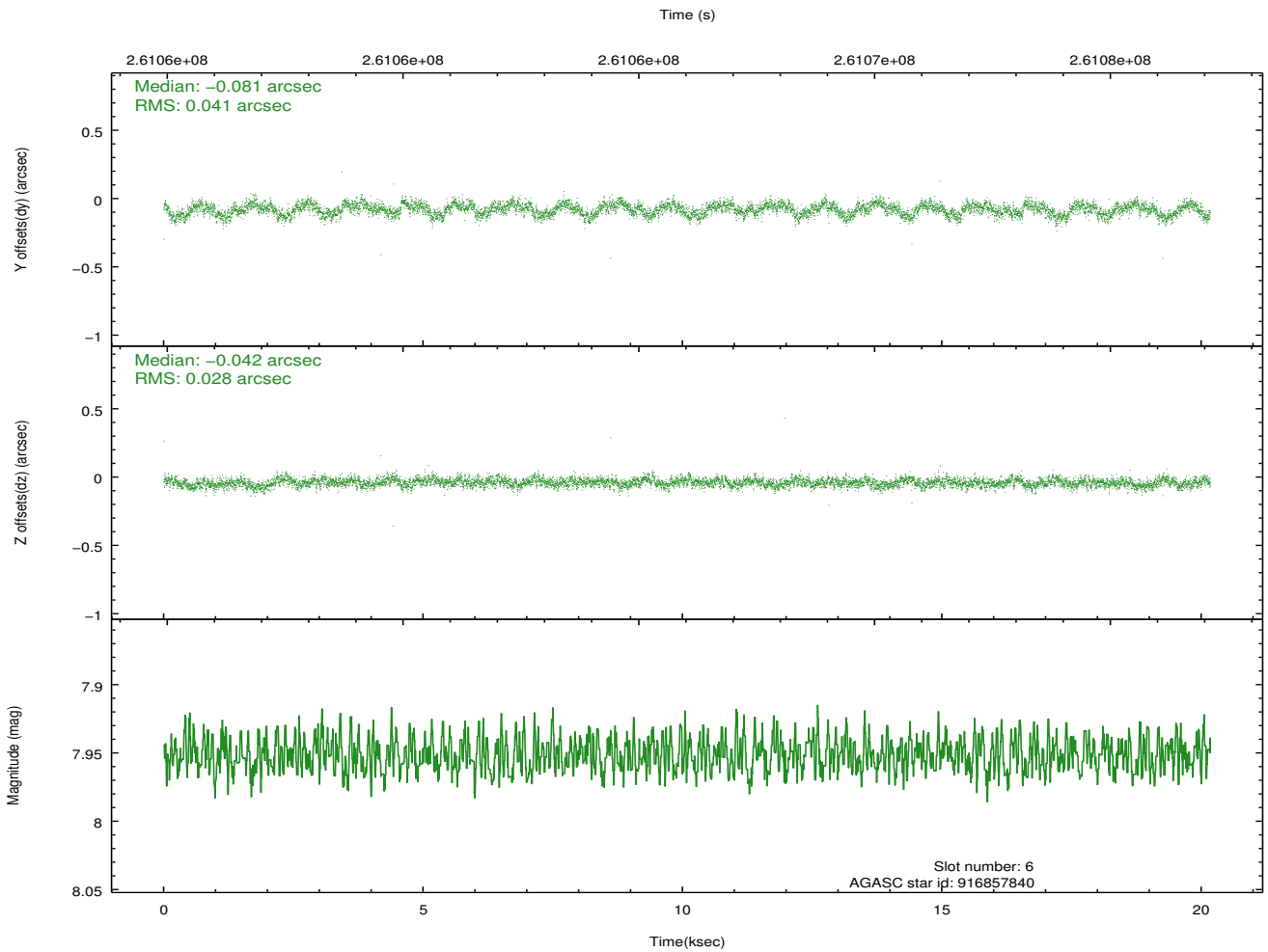
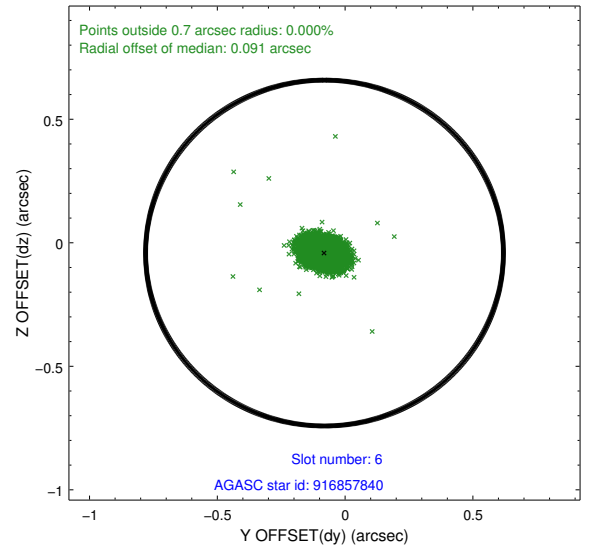
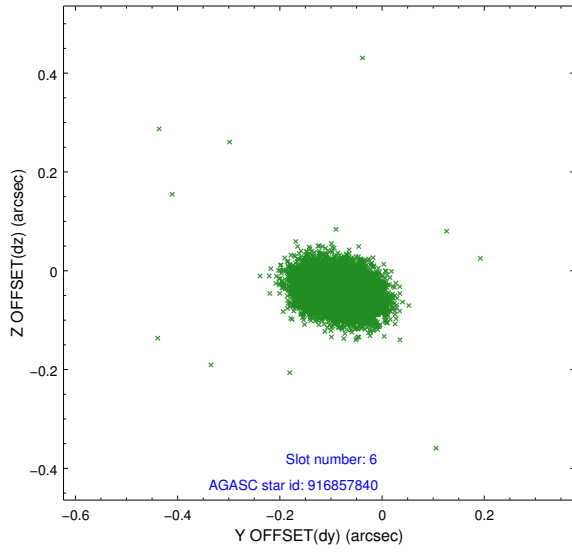
2.4.2 Slot 4



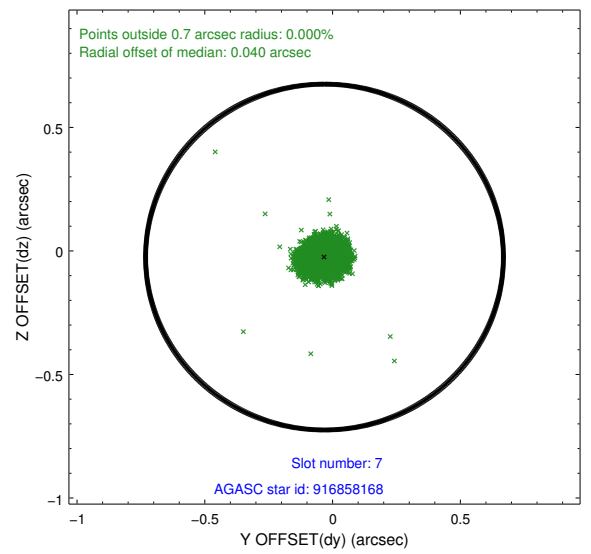
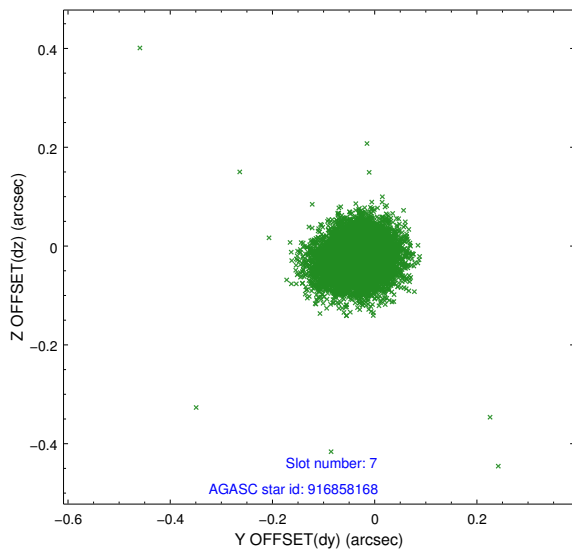
2.4.3 Slot 5



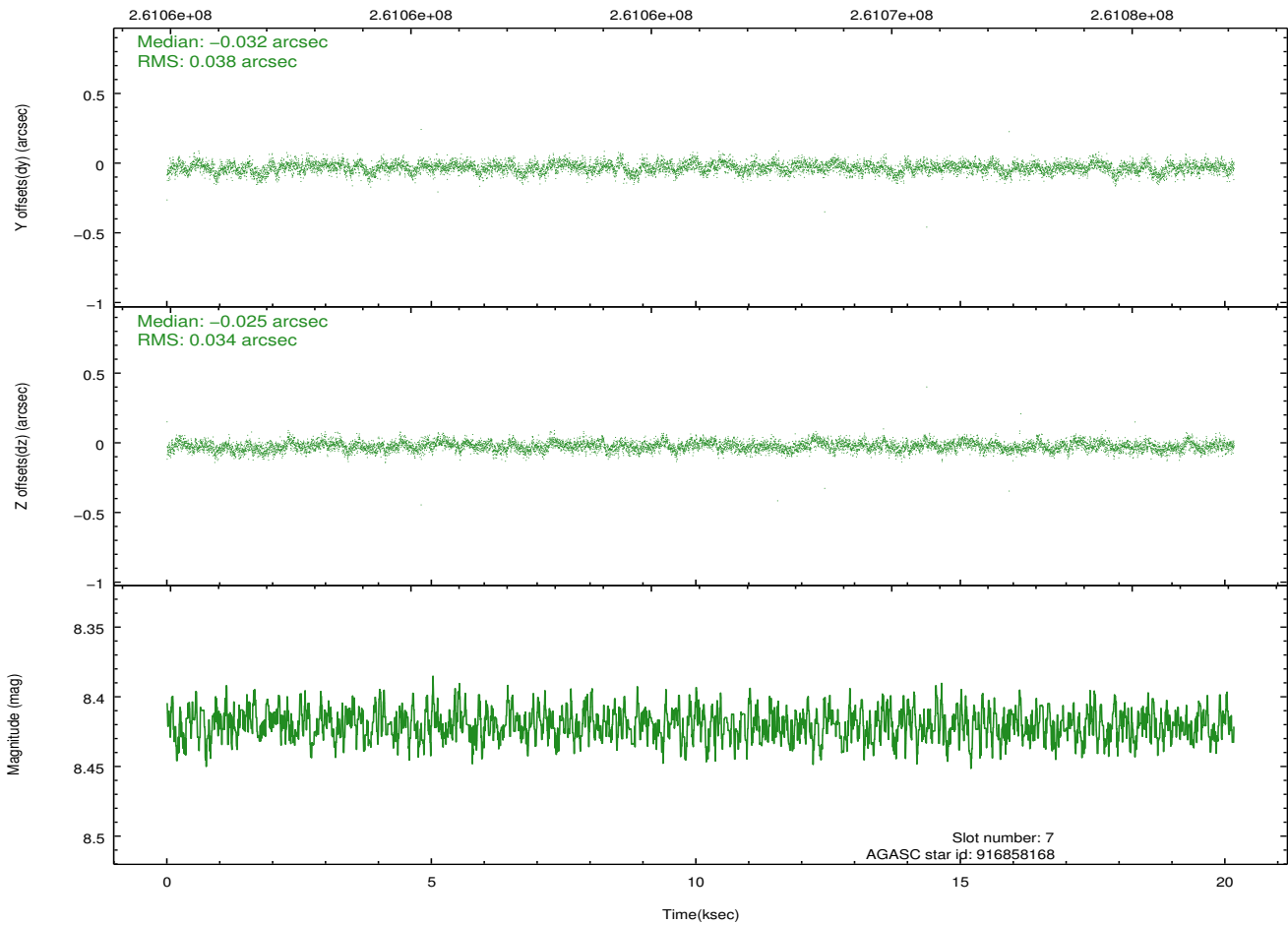
2.4.4 Slot 6



2.4.5 Slot 7

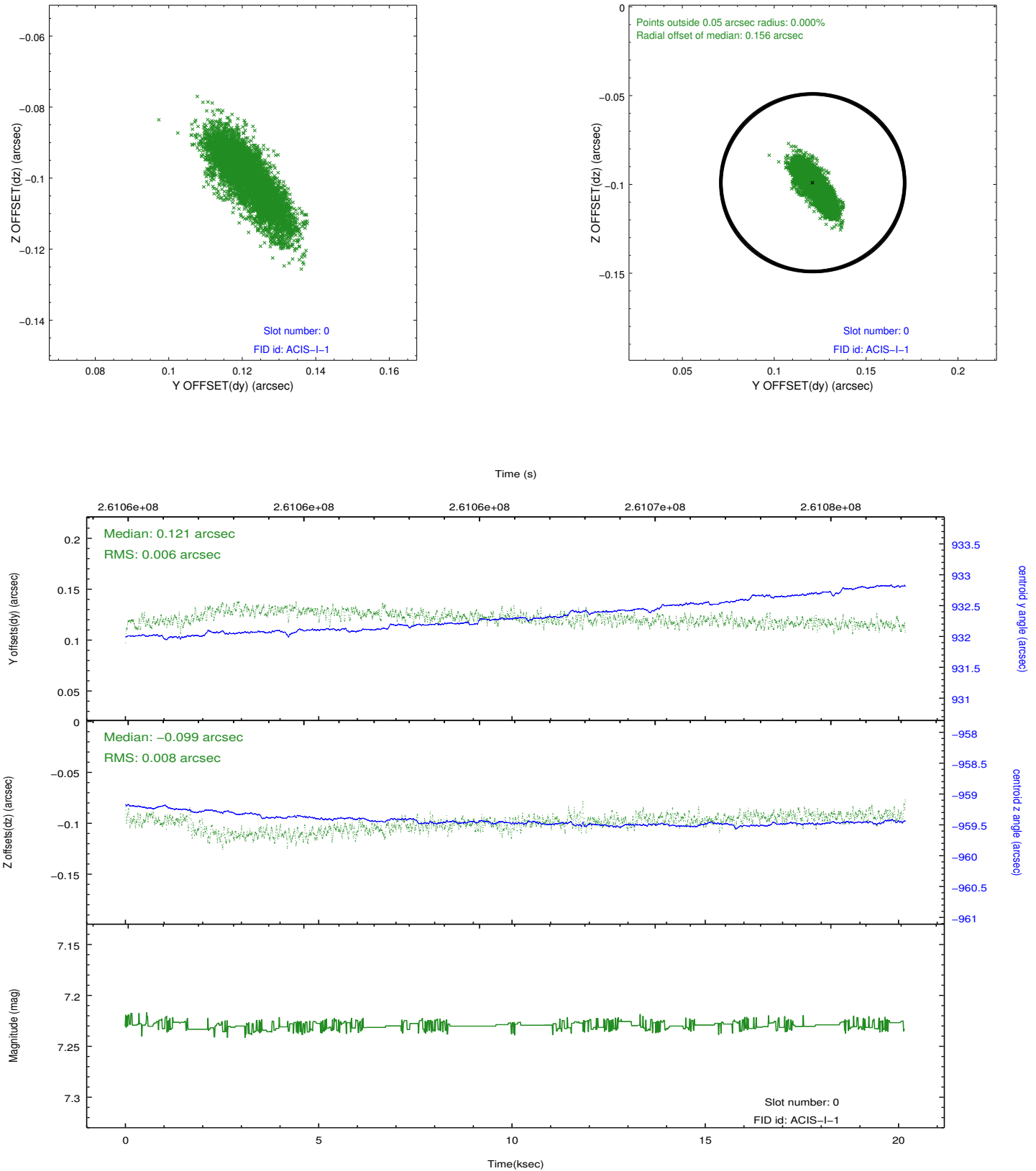


Time (s)

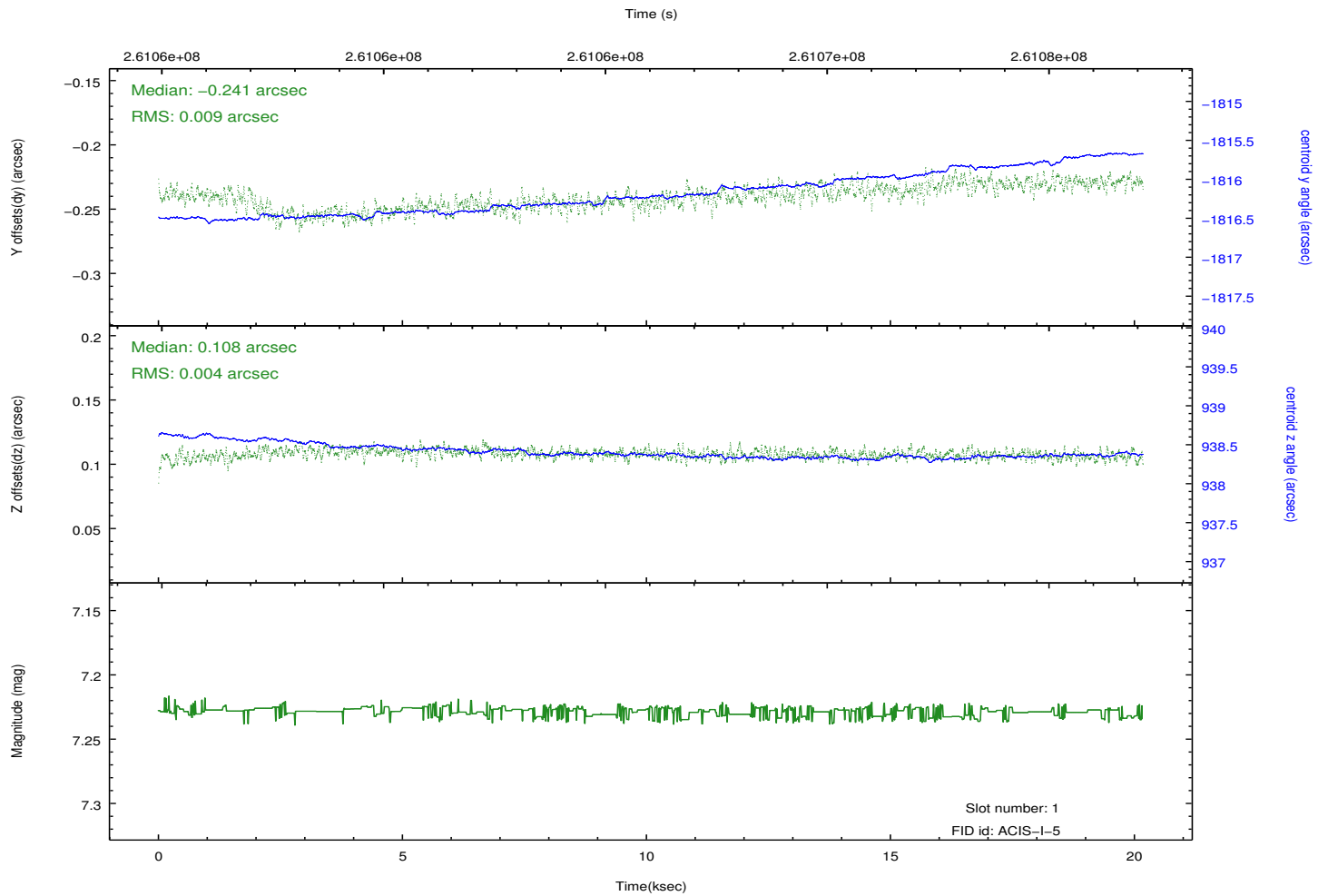
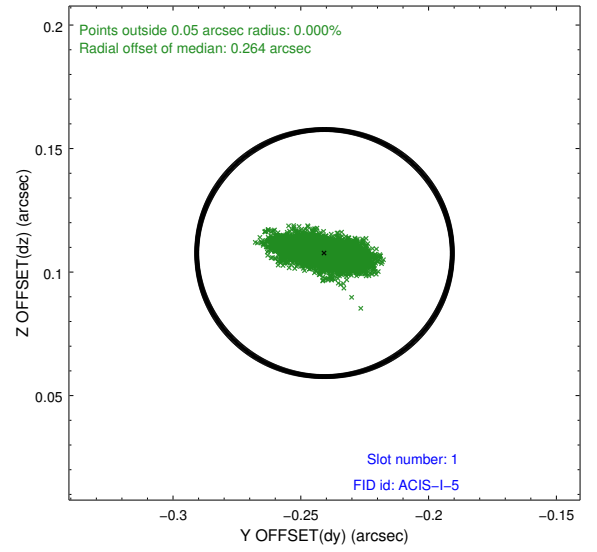
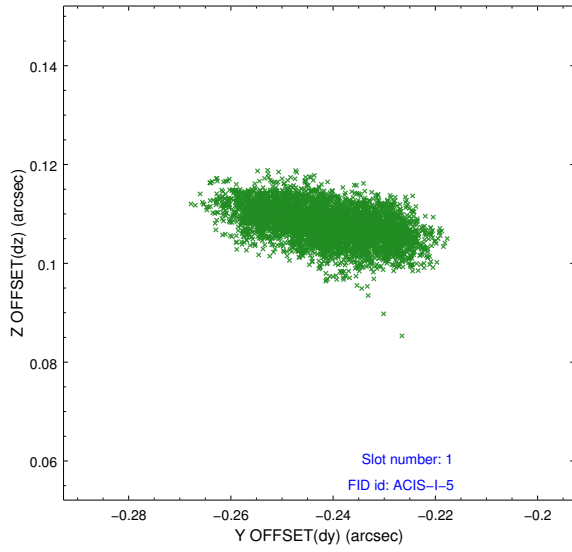


2.5 FID Slots

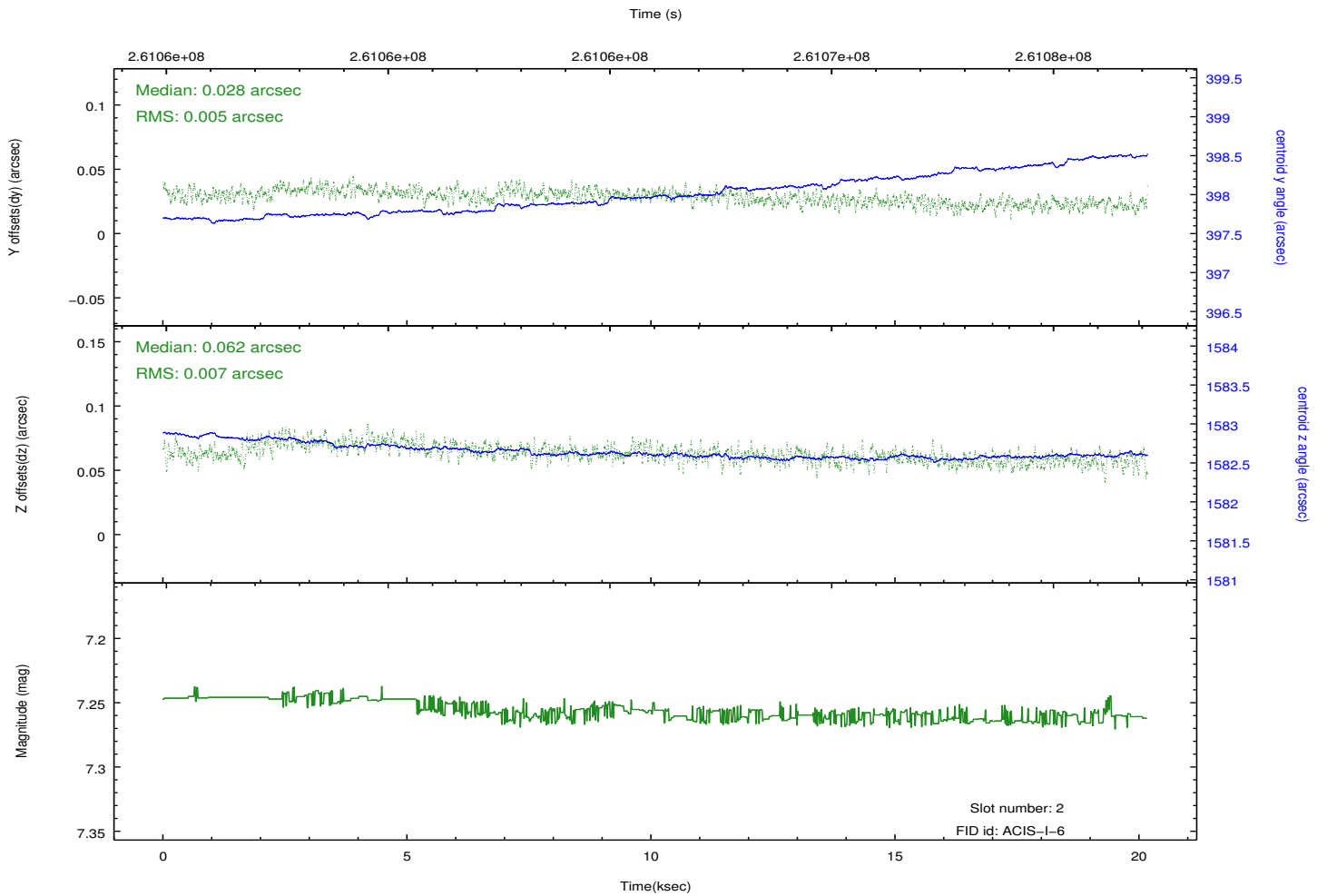
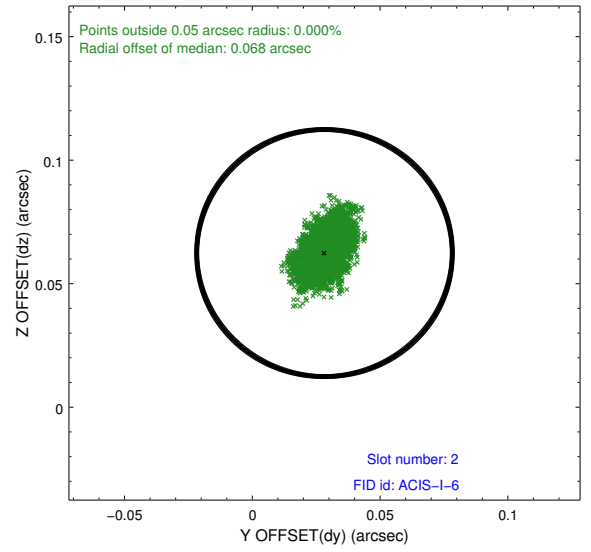
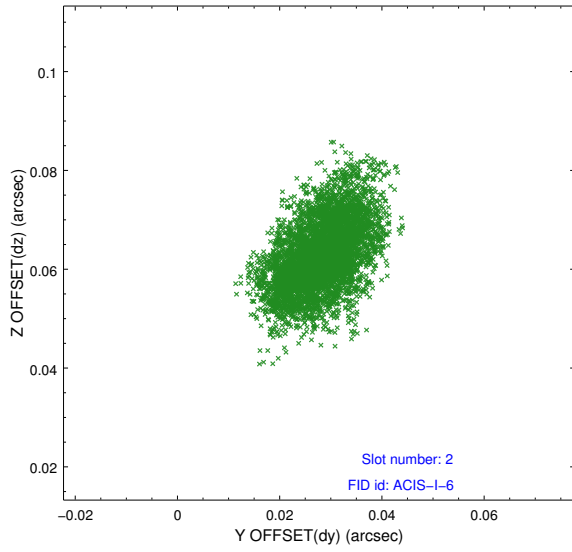
2.5.1 Slot 0



2.5.2 Slot 1



2.5.3 Slot 2



A Summary

A.1 Status

V&V Scientist	Jen Lauer
V&V Date (YYYY-MM-DD)	2012.03.30
V&V Edition	1
V&V Disposition and Status	OK
V&V Charge Time	20.0972999

A.2 Comments