

V&V Reference Report

L2 ASCDS Version : 8.5.1.1

Observation 7194 - L2 Version 3
Chandra X-Ray Center

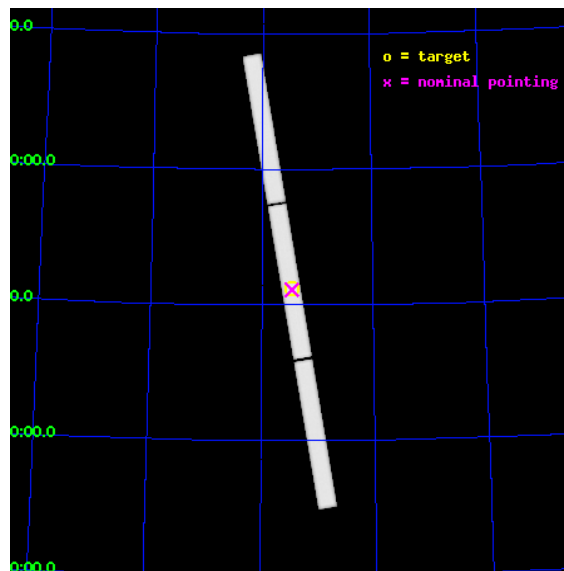
L2 Processing Date : Dec 31 2012

Contents

1	Front	2
2	OBI	3
2.1	OBI	3
2.1.1	Images	3
2.1.2	Parameters	4
2.1.3	Events	4
2.2	Compared Parameters	5
2.3	Aspect	6
2.4	Star Slots	9
2.4.1	Slot 3	9
2.4.2	Slot 4	10
2.4.3	Slot 5	11
2.4.4	Slot 6	12
2.4.5	Slot 7	13
2.5	FID Slots	14
2.5.1	Slot 0	14
2.5.2	Slot 1	15
2.5.3	Slot 2	16
3	Gratings	17
3.1	LETG Arm	17
A	Summary	19
A.1	Status	19
A.2	Comments	19

1 Front

seq_num	200330	Sequence number
obs_id	7194	Observation id
title	The location and spatial structure of the X-ray emitting plasma in the magnetically confined environment of beta Cep	Proposal title
observer	Dr Coralie Neiner	Principal investigator
object	beta Cep	Source name
ra_targ	322.165	Observer's specified target RA [deg]
dec_targ	70.560717	Observer's specified target Dec [deg]
ra_nom	322.16219027776	Nominal RA [deg]
dec_nom	70.556138808597	Nominal Dec [deg]
roll_nom	260.26999110883	Nominal Roll [deg]
revision	3	Processing version of data
ontime	38174.333010703	[s]
livetime	37875.185730935	Ontime multiplied by DTCOR
l2events	2435365	Number of level 2 events

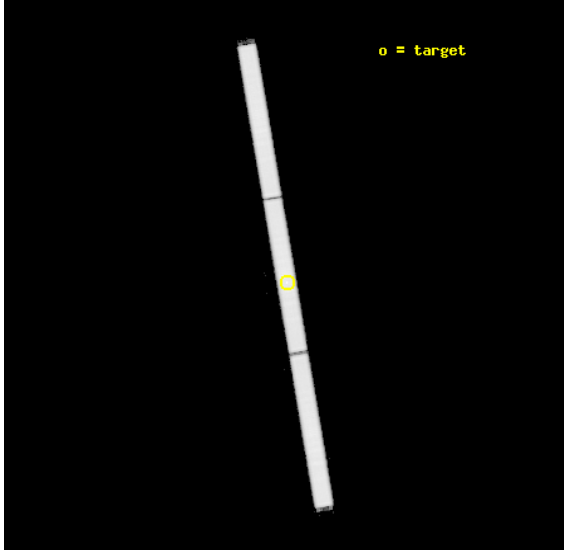


2 OBI

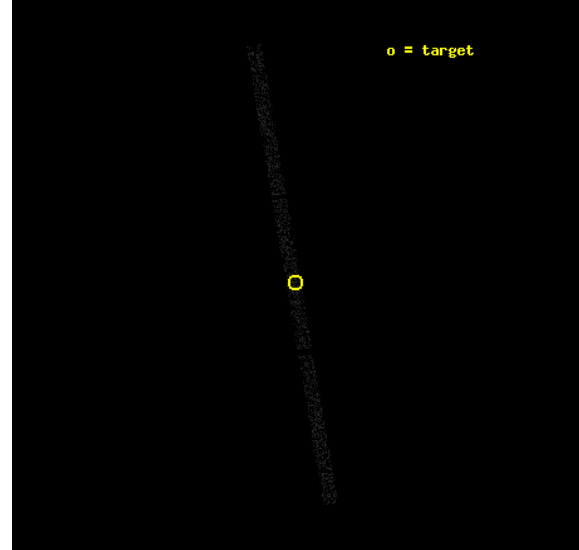
2.1 OBI

2.1.1 Images

Level 1 Image



Level 1 Bad Events



2.1.2 Parameters

obi_num	0	Obi number	sched_exp_time	38000.000000	[s] Scheduled observation exposure time
ascdsver	8.5.1.1	Processing system revision	ontime	38174.333010703	[s]
caldbver	4.5.5	 	l1events	3322498	Number of level 1 events
date	2012-12-31T10:22:25	Date and time of file creation			
revision	3	Processing version of data			

2.1.3 Events

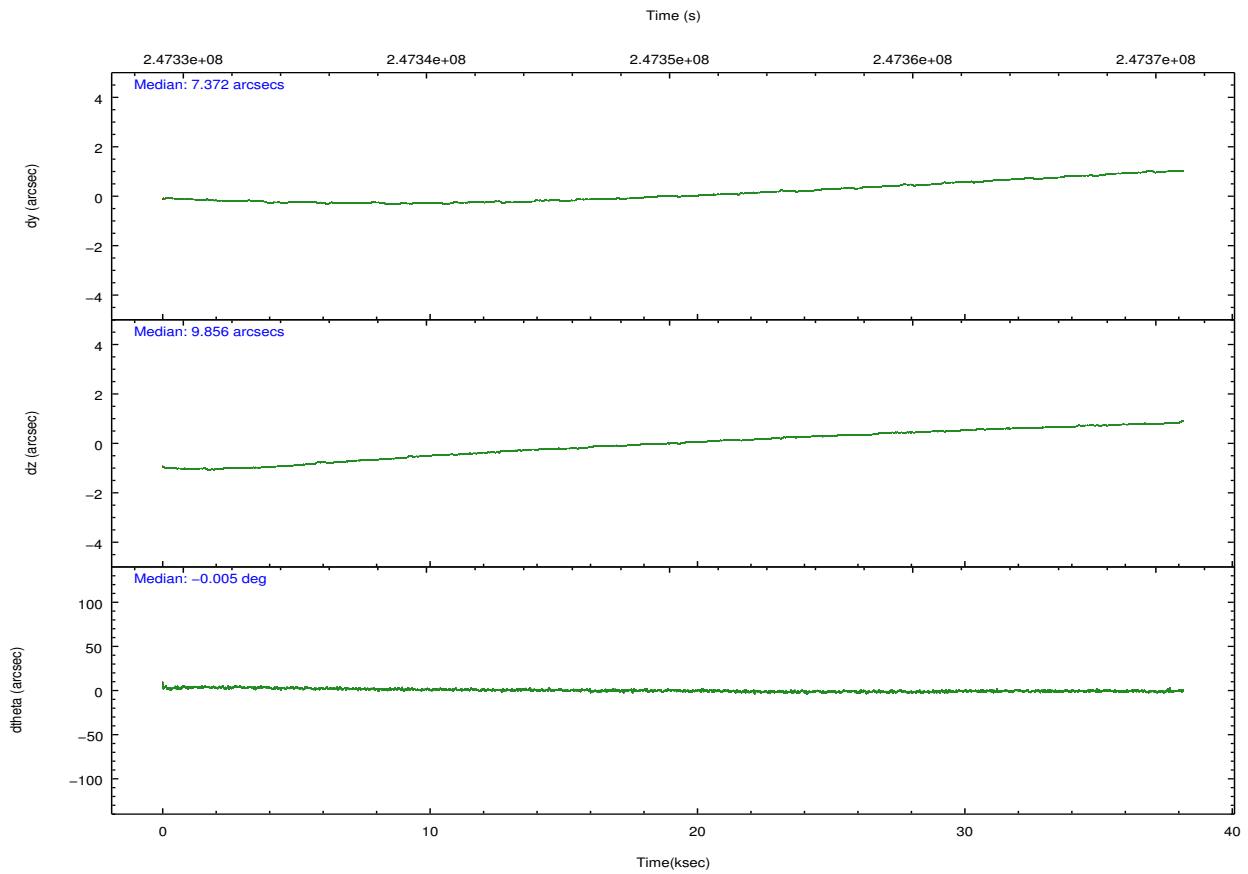
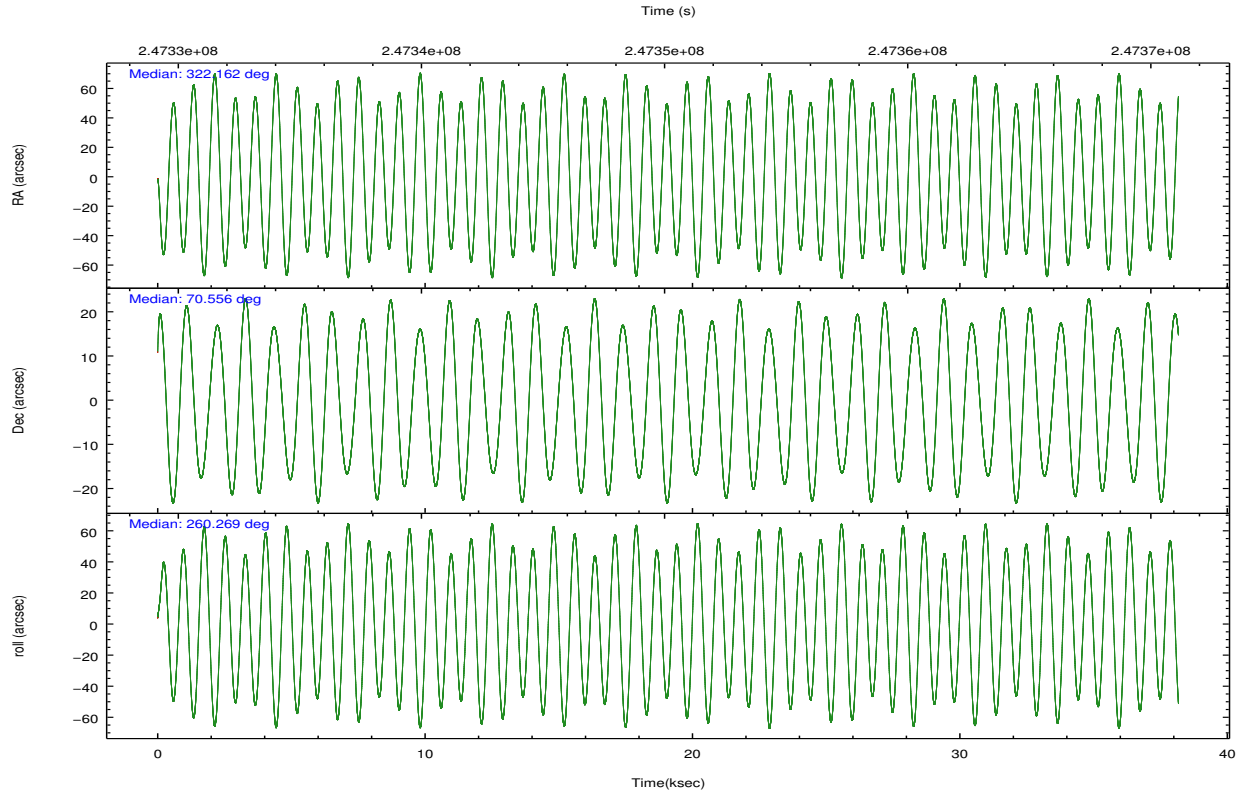
Level 1 Events

	segment 1	segment 2	segment 3
level 1 events	1114556	1095384	1112558
rejected events	23050	22519	23132
rejected %	2%	2%	2%

2.2 Compared Parameters

Parameter	Planned	Actual	Parameter	Planned	Actual
Instrument	HRC	HRC	Obspar format version number	7	7
Detector	HRC-S	HRC-S	Obspar file type	PREDICTED	ACTUAL
Grating	LETG	LETG	Obspar update status	NONE	UPDATED
Data mode	OBSERVING	OBSERVING			
Observation mode	POINTING	POINTING			
[deg] Pointing RA	322.128446	322.1621902777576			
[deg] Pointing Dec	70.582433	70.5561388085973			
[deg] Pointing Roll	260.234471	260.2699911088336			
[mm] SIM focus pos	-1.429586	-1.428180813131781			
[mm] SIM defocus	0.1037507710433287	0.1051558262725154			
[mm] SIM translation stage pos	250.455976	250.466033080201			
[mm] SIM translation stage offset	0	-0.01005468664627074			
Phase constraints	Y	Y			
[d] Phase period	12.000750	12.000750			
[d] Phase epoch (MJD)	53962.310000	53962.310000			
Phase start	0.216245	0.216245			
Phase end	0.283755	0.283755			
Phase start error	0.020000	0.020000			
Phase end error	0.020000	0.020000			
[s] Observation start time (MET)	247331231.184000	247330284.4788			
Observation start date	2005-11-02T15:06:07	2005-11-02T14:51:24			
[s] Observation end time (MET)	247369231.184000	247369936.60563			
Observation end date	2005-11-03T01:39:27	2005-11-03T01:52:16			

2.3 Aspect

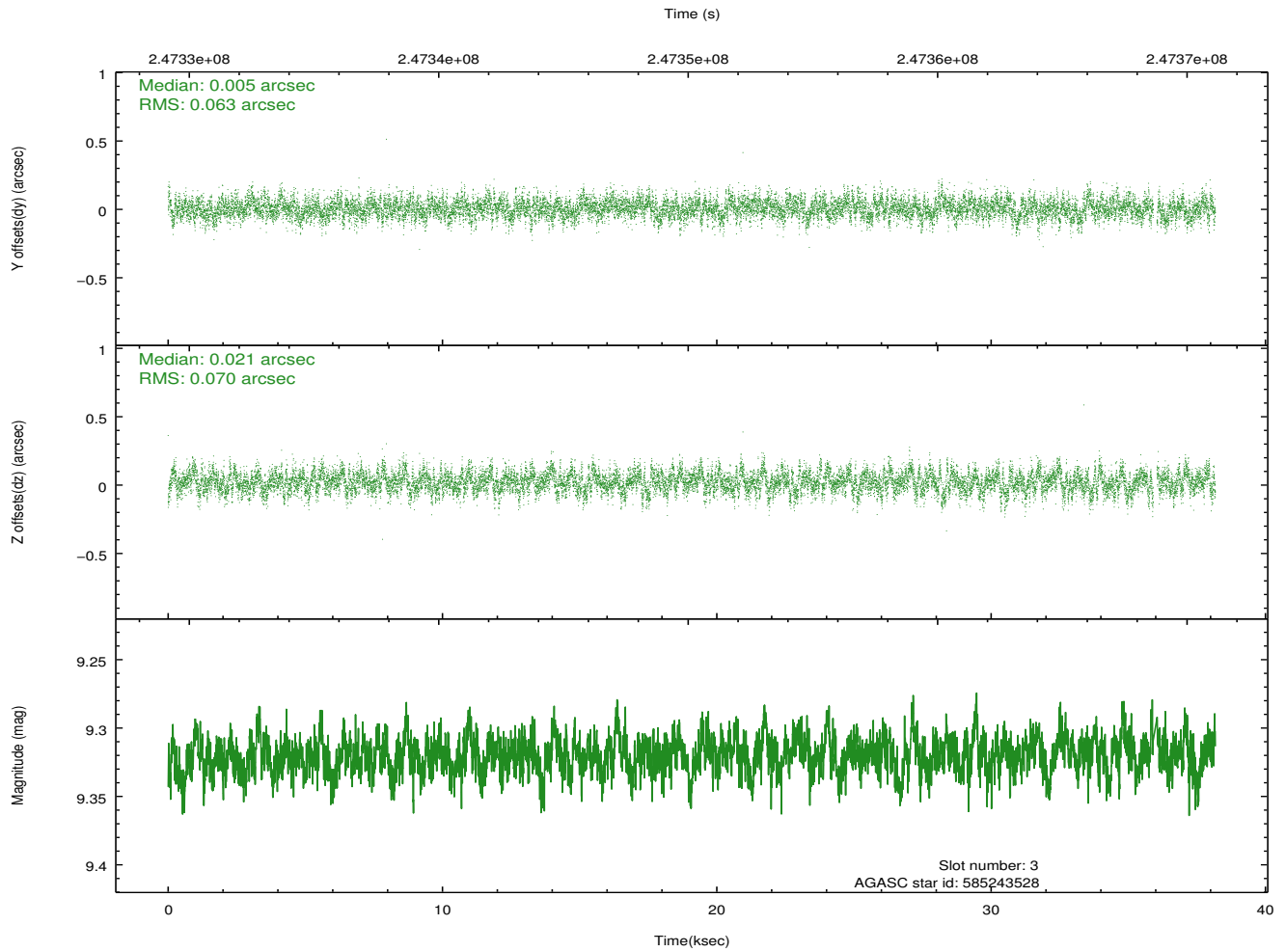
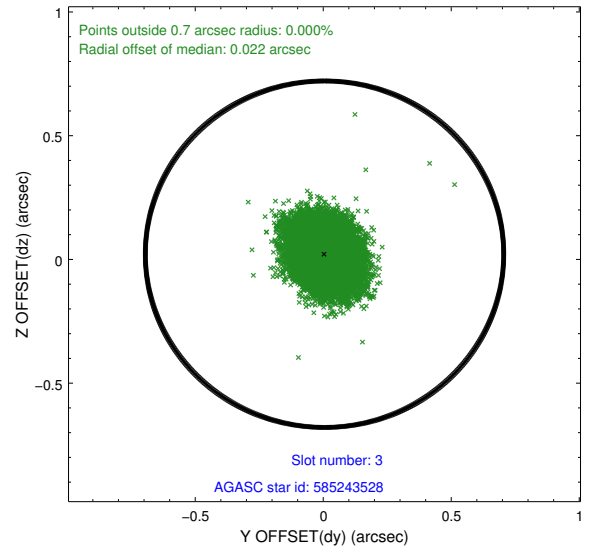
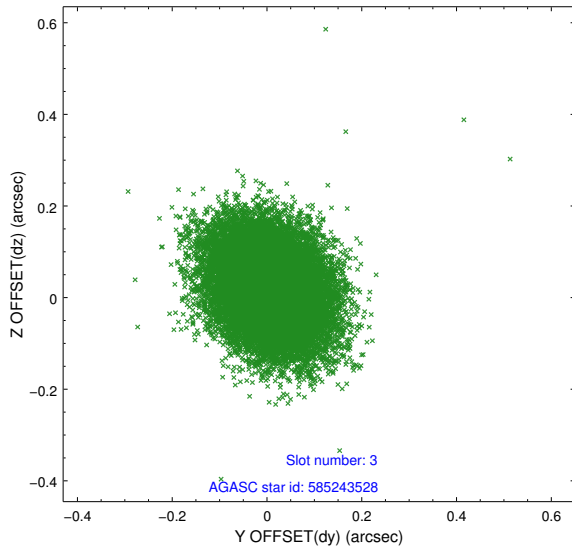


Slot Statistics

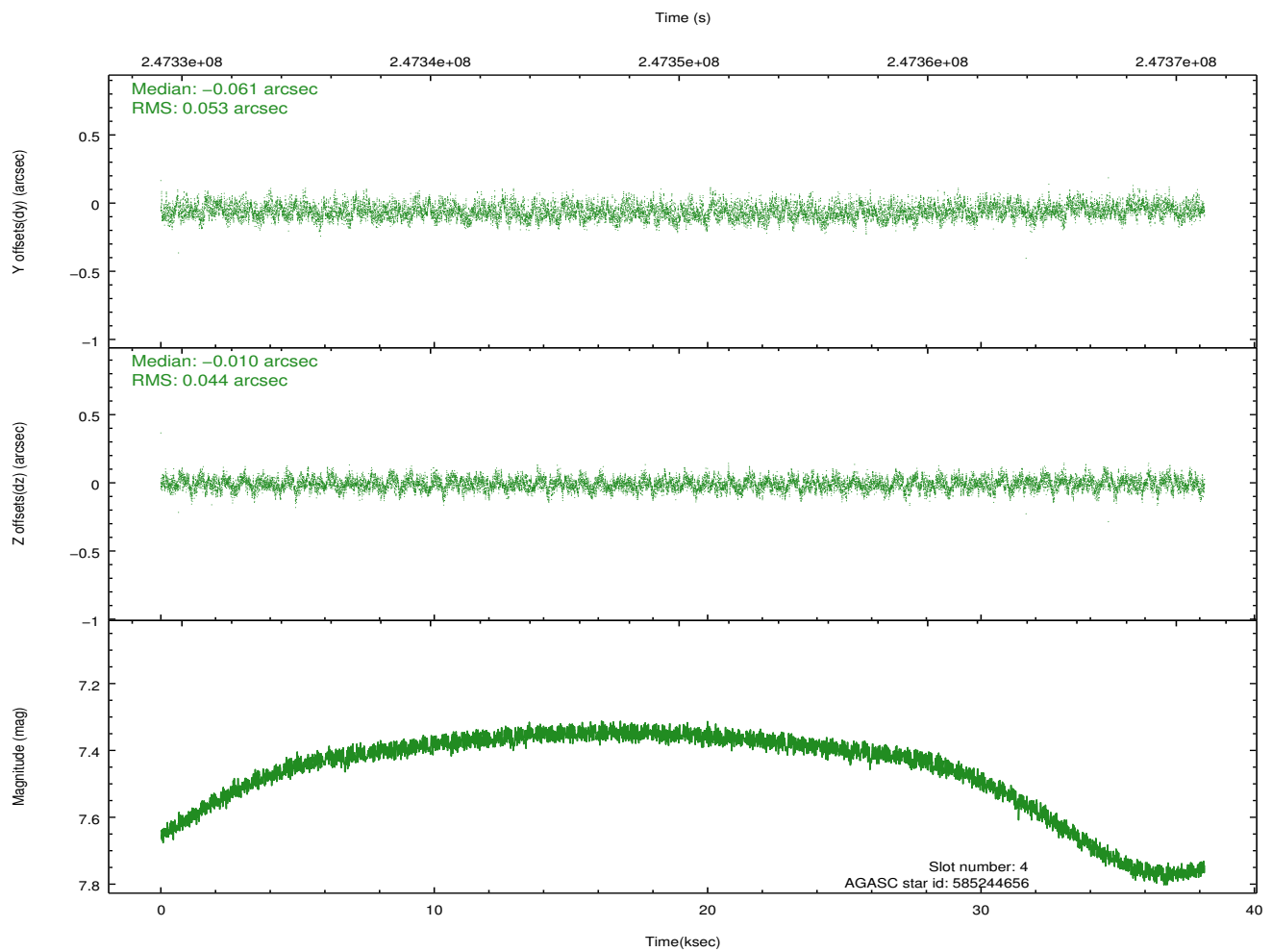
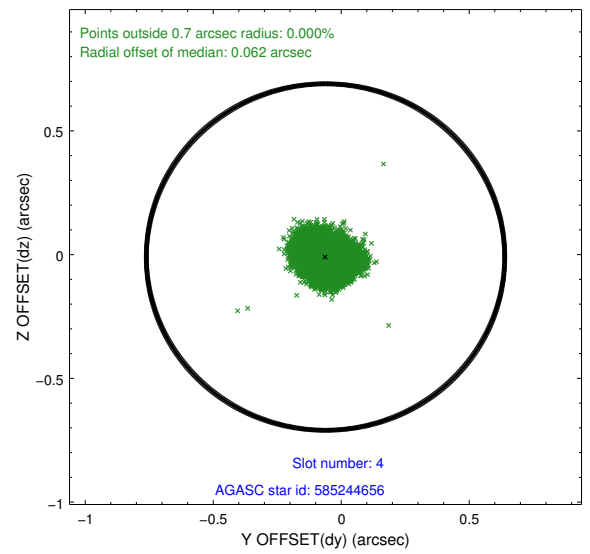
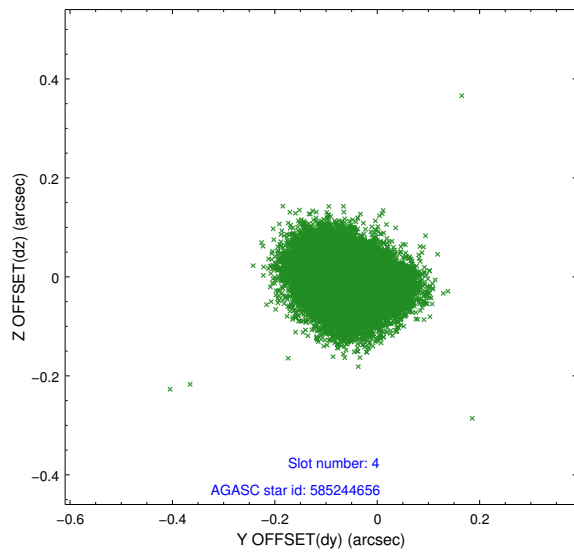
slot	status	id	mag	n_pts	med_dy	med_dz	dr1	dr2	ra	dec	mean_y	mean_z
0	FID	HRC-S-1	7.05	9312	0.075	-0.133	0.009	0.028	0.000000	0.000000	-1161.72	-458.49
1	FID	HRC-S-2	7.04	9312	0.121	-0.141	0.028	0.044	0.000000	0.000000	1237.87	-451.13
2	FID	HRC-S-4	7.02	9311	0.206	-0.030	0.023	0.043	0.000000	0.000000	1236.77	573.70
3	GUIDE	585243528	9.32	18543	0.005	0.021	0.099	0.163	323.001841	70.190189	1203.96	1288.87
4	GUIDE	585244656	7.41	18623	-0.061	-0.010	0.074	0.117	322.746463	70.823219	-981.61	572.85
5	GUIDE	585245544	7.36	18623	-0.024	-0.063	0.066	0.106	321.319997	70.477535	530.74	-895.10
6	GUIDE	585249712	9.18	18613	0.102	0.022	0.091	0.150	322.943679	70.596904	-222.66	950.91
7	GUIDE	585244168	9.03	18597	-0.025	0.026	0.076	0.126	323.050612	69.955180	2024.09	1503.37

2.4 Star Slots

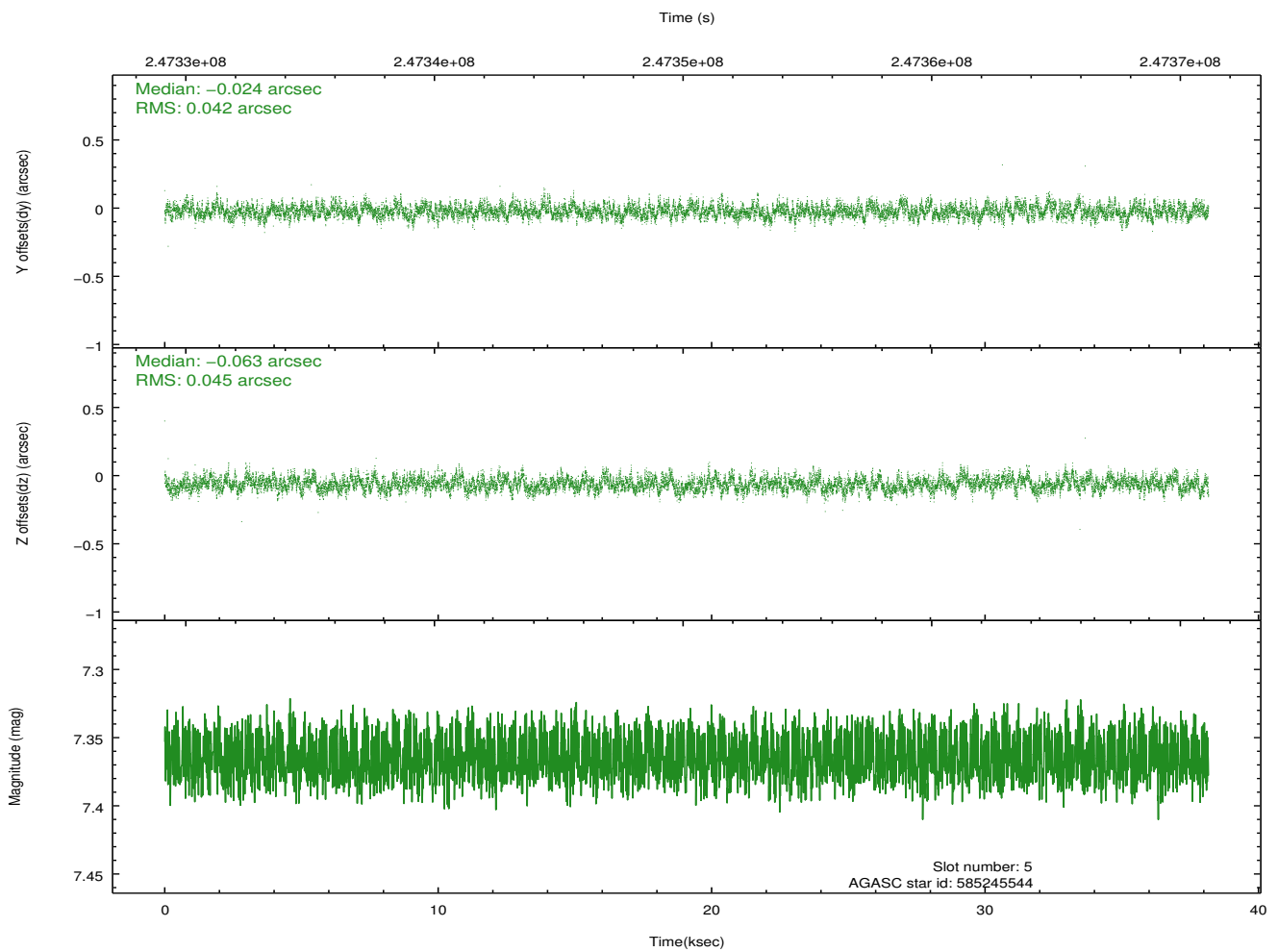
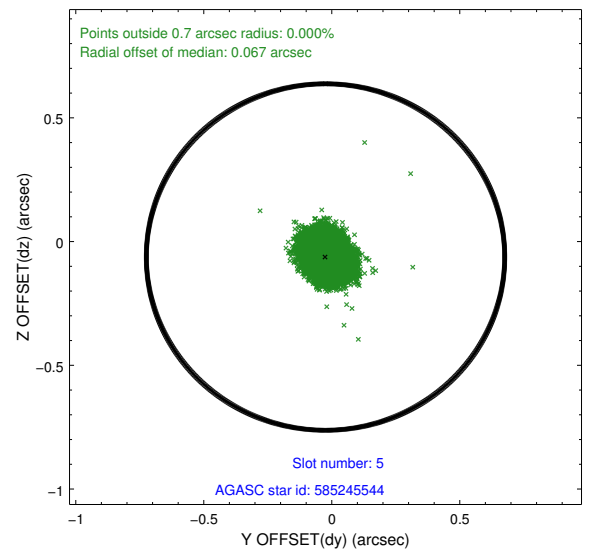
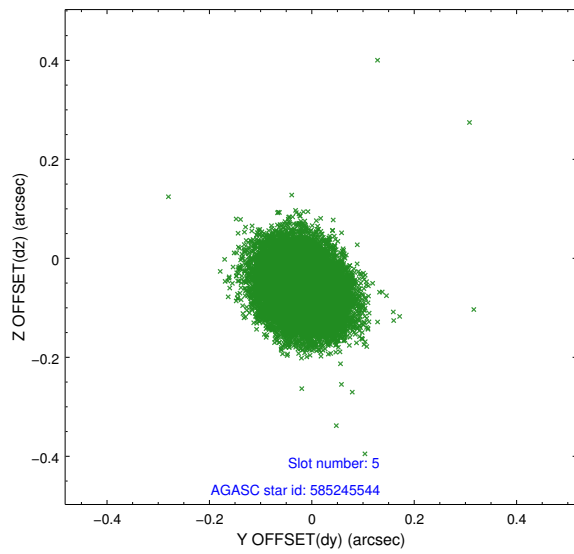
2.4.1 Slot 3



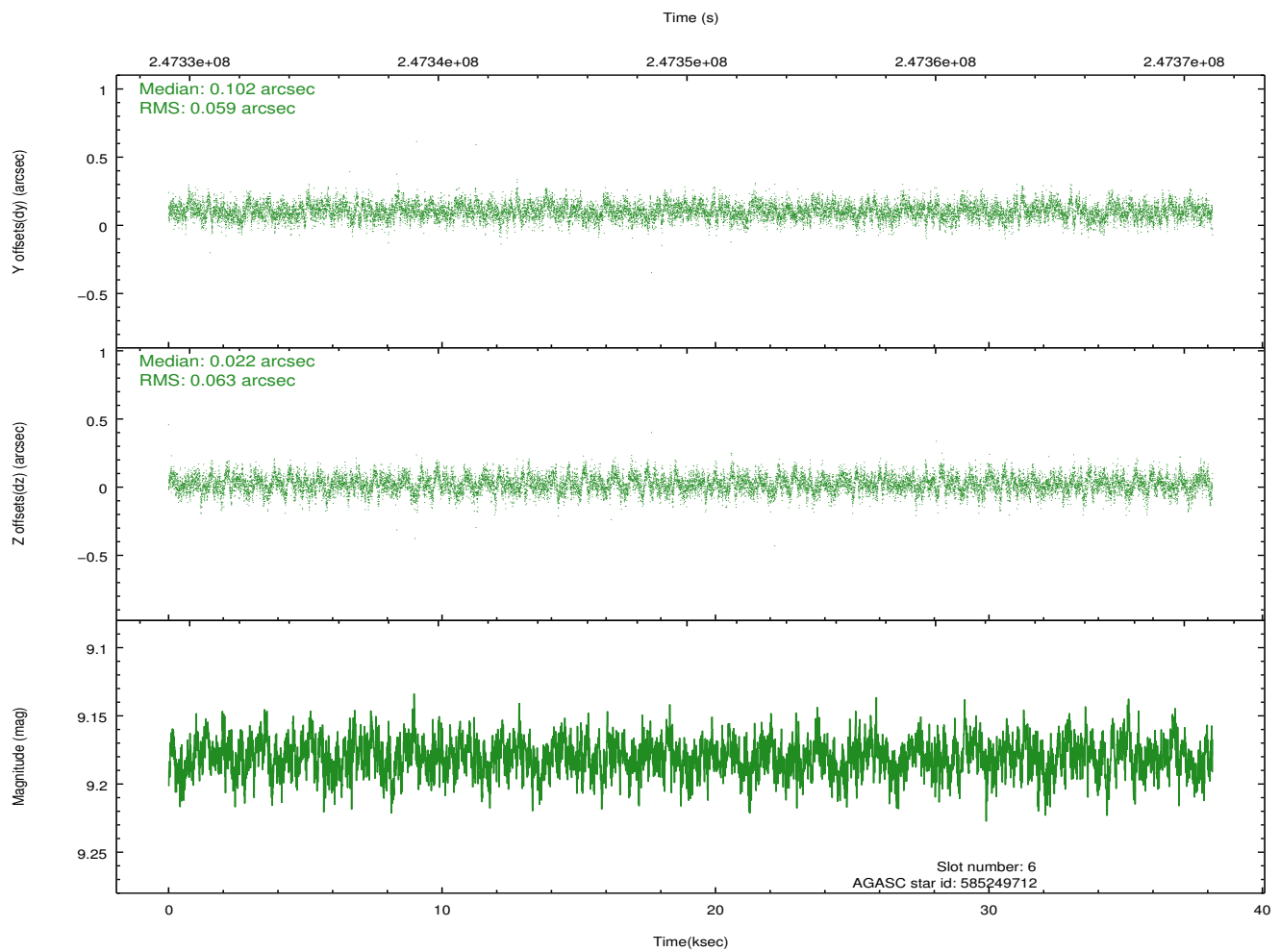
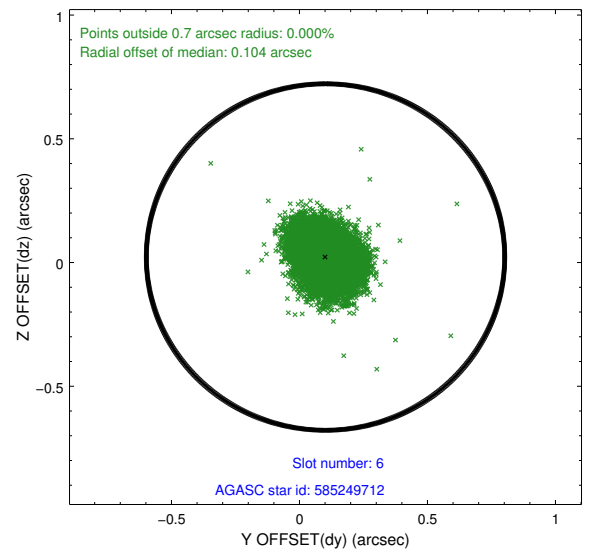
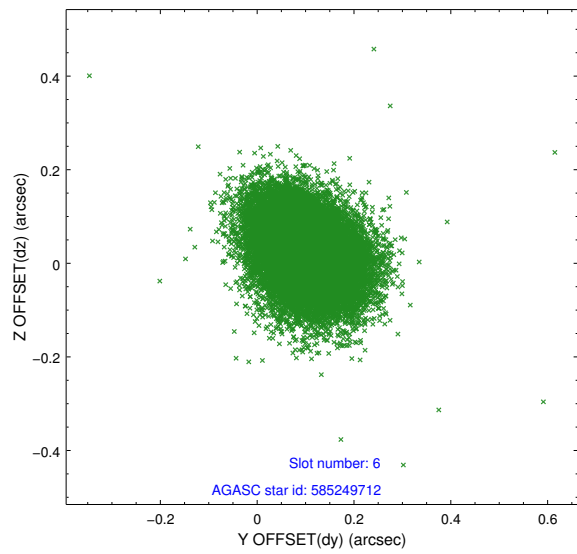
2.4.2 Slot 4



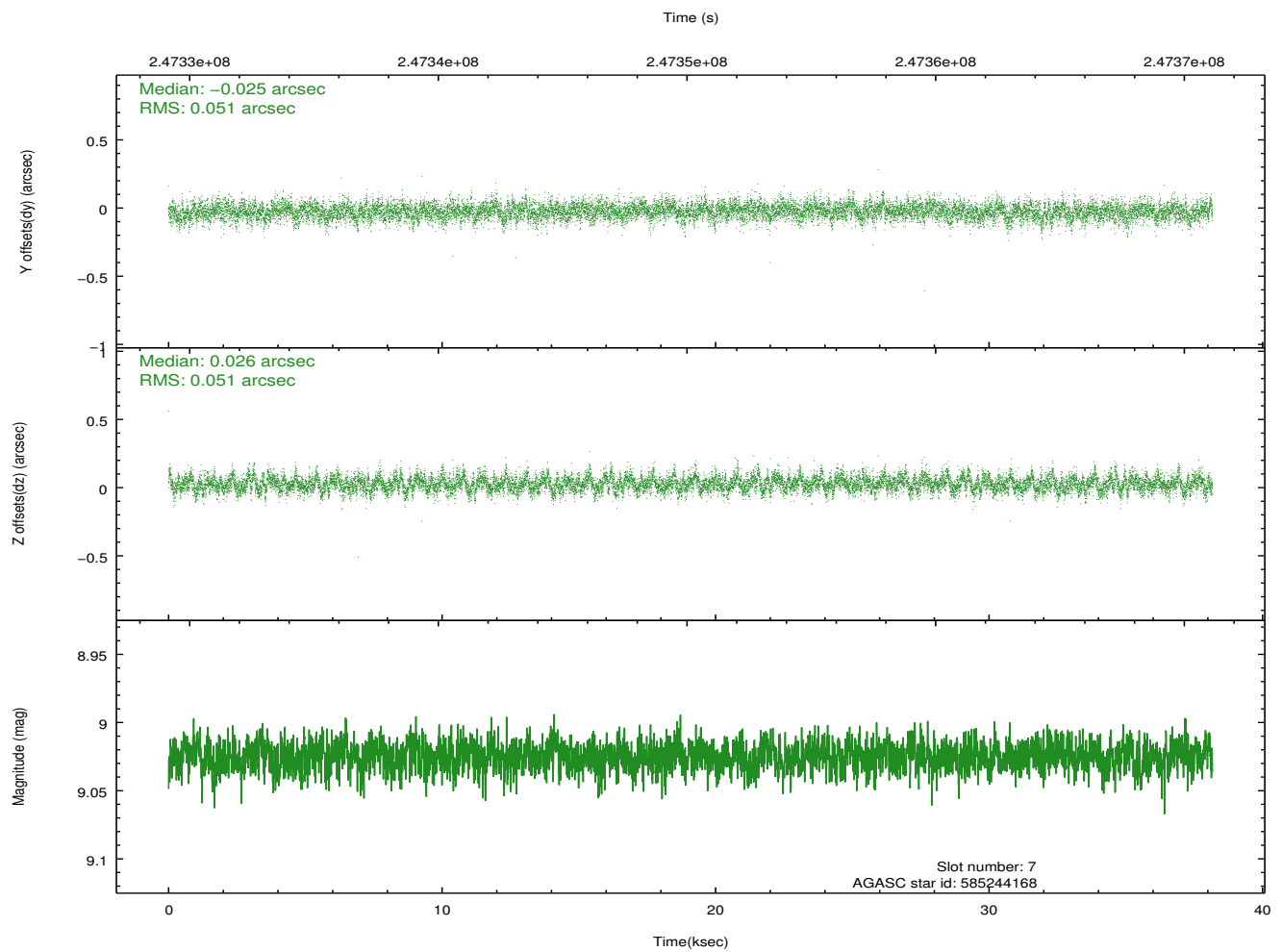
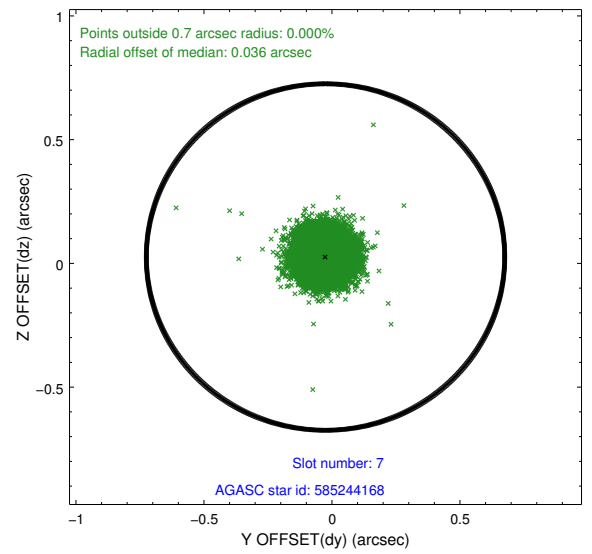
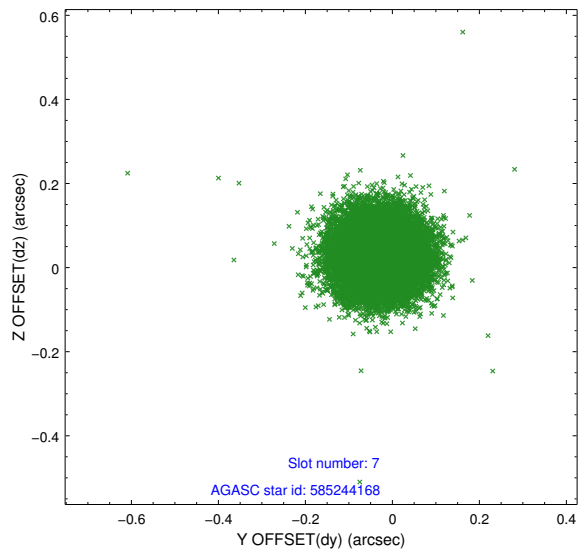
2.4.3 Slot 5



2.4.4 Slot 6

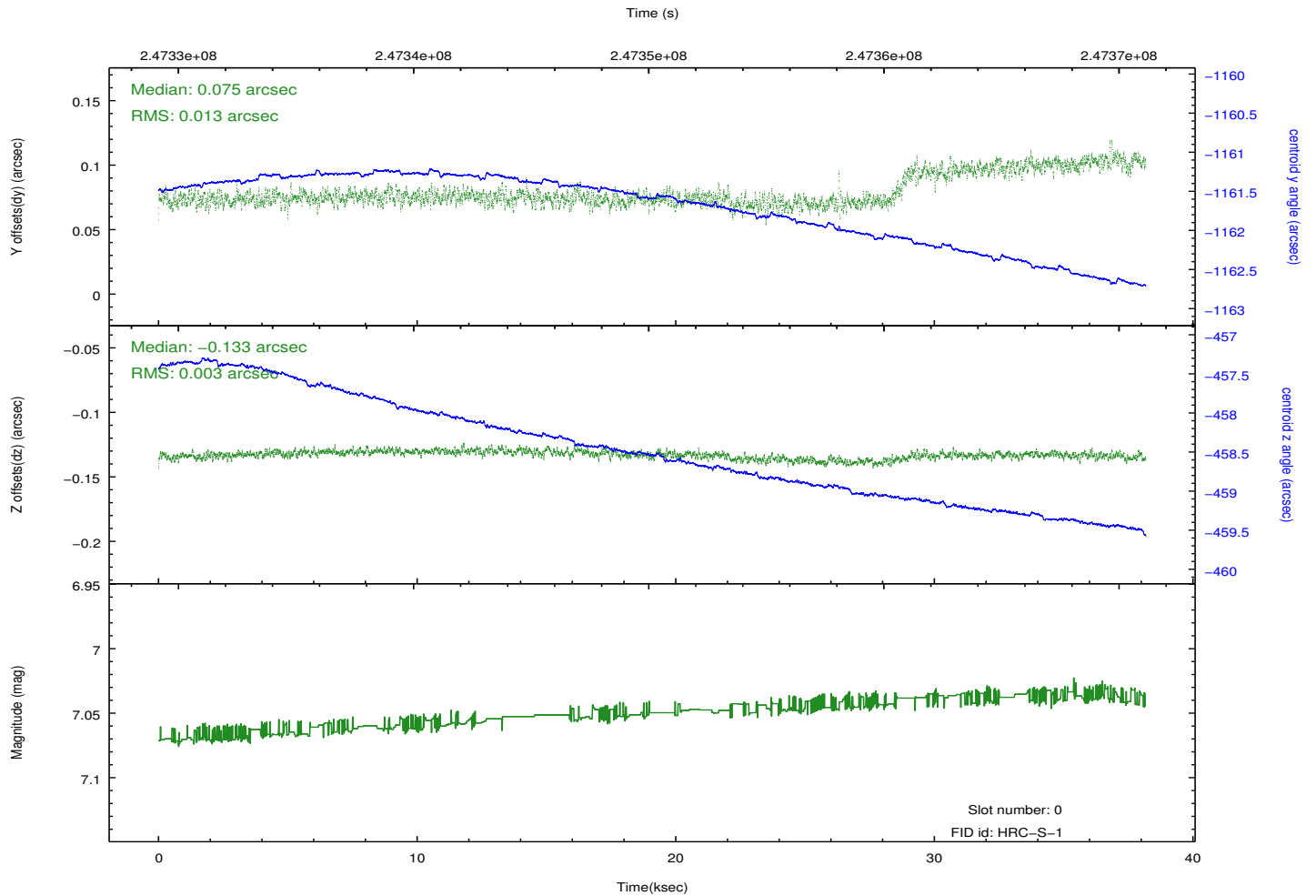
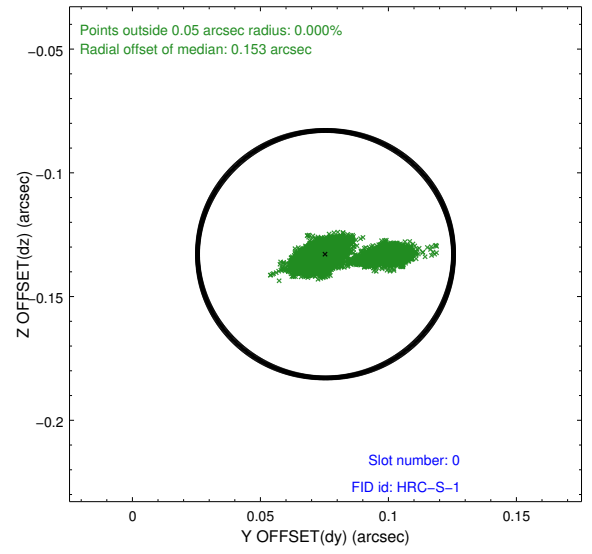
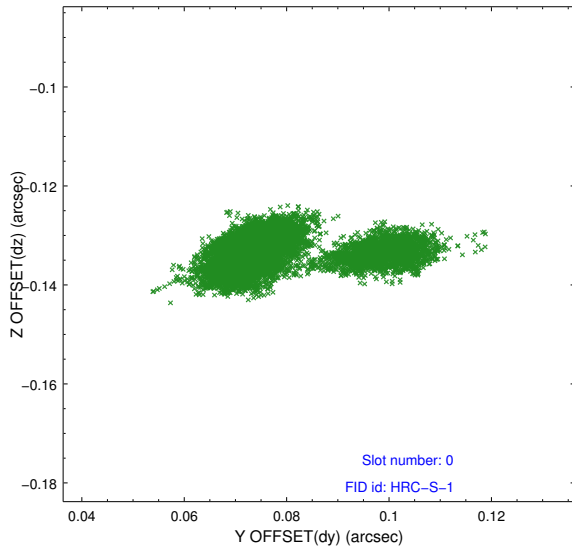


2.4.5 Slot 7

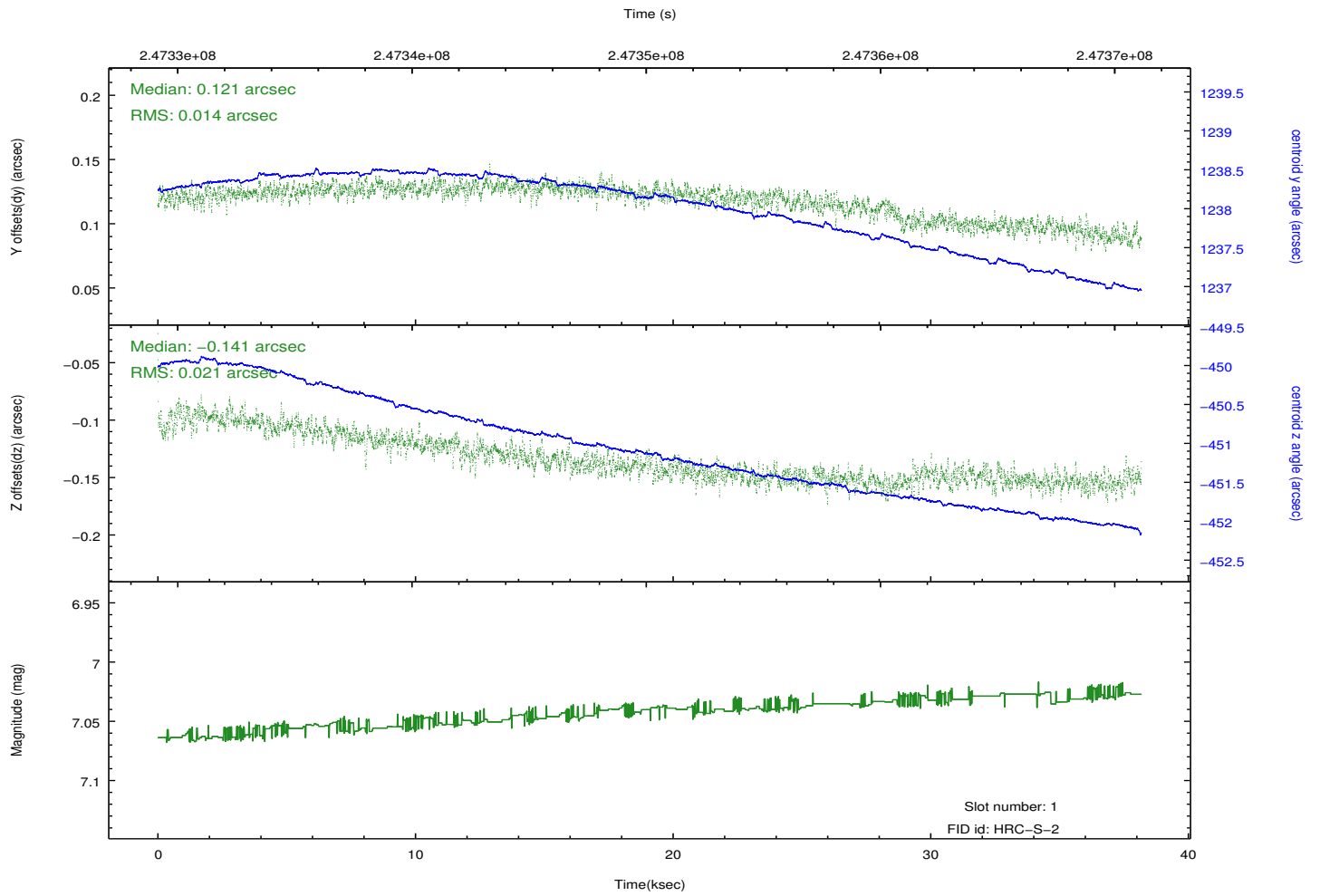
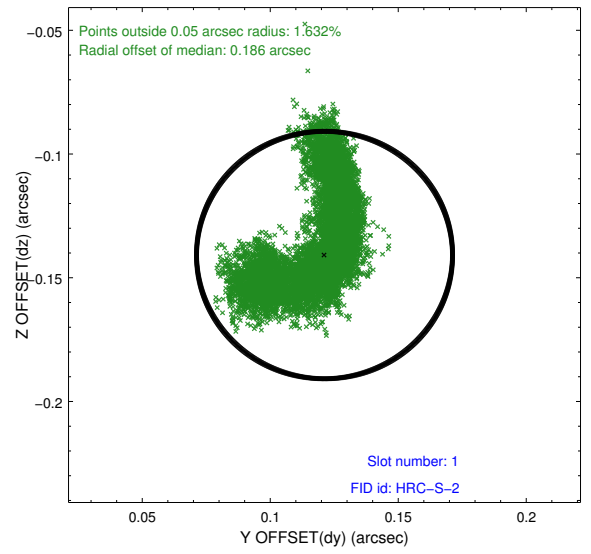
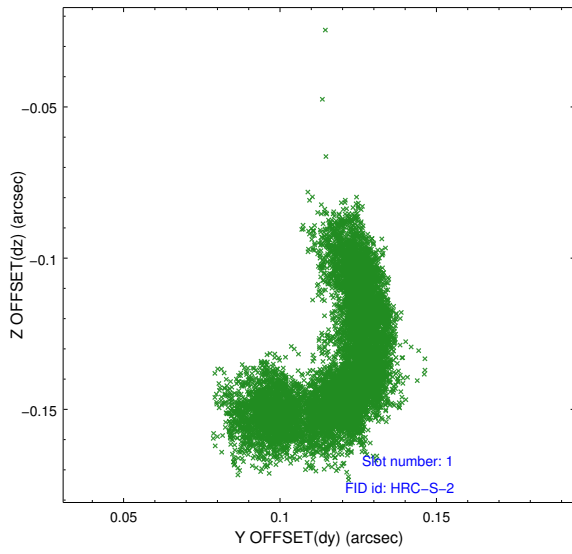


2.5 FID Slots

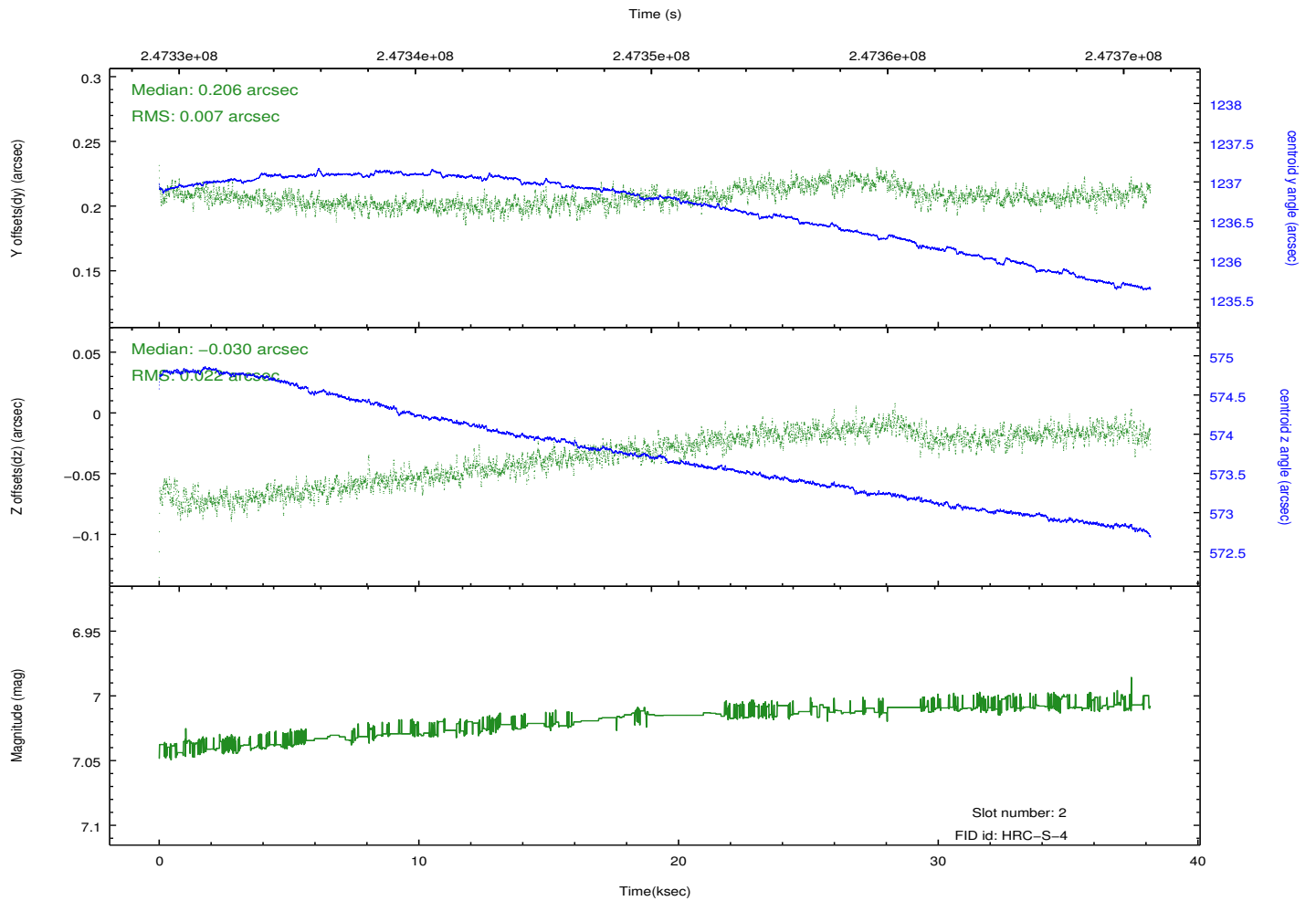
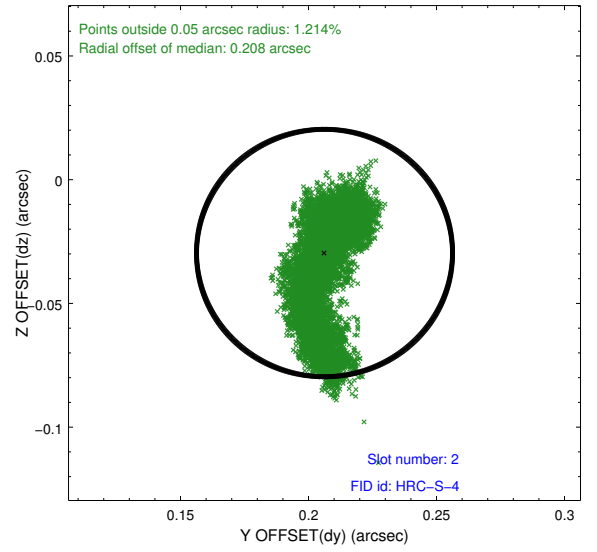
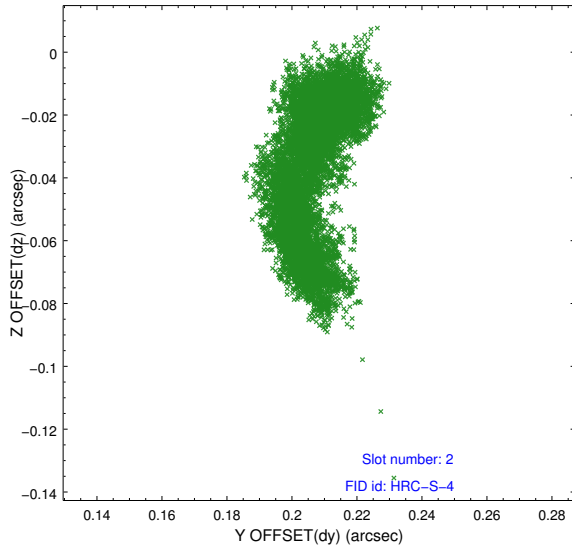
2.5.1 Slot 0



2.5.2 Slot 1

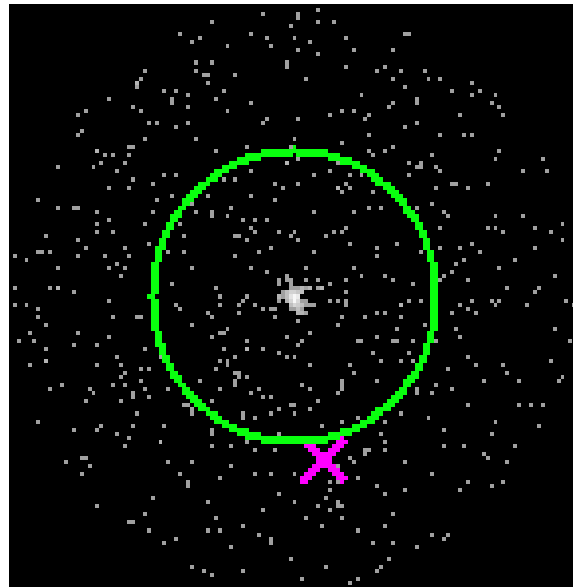


2.5.3 Slot 2

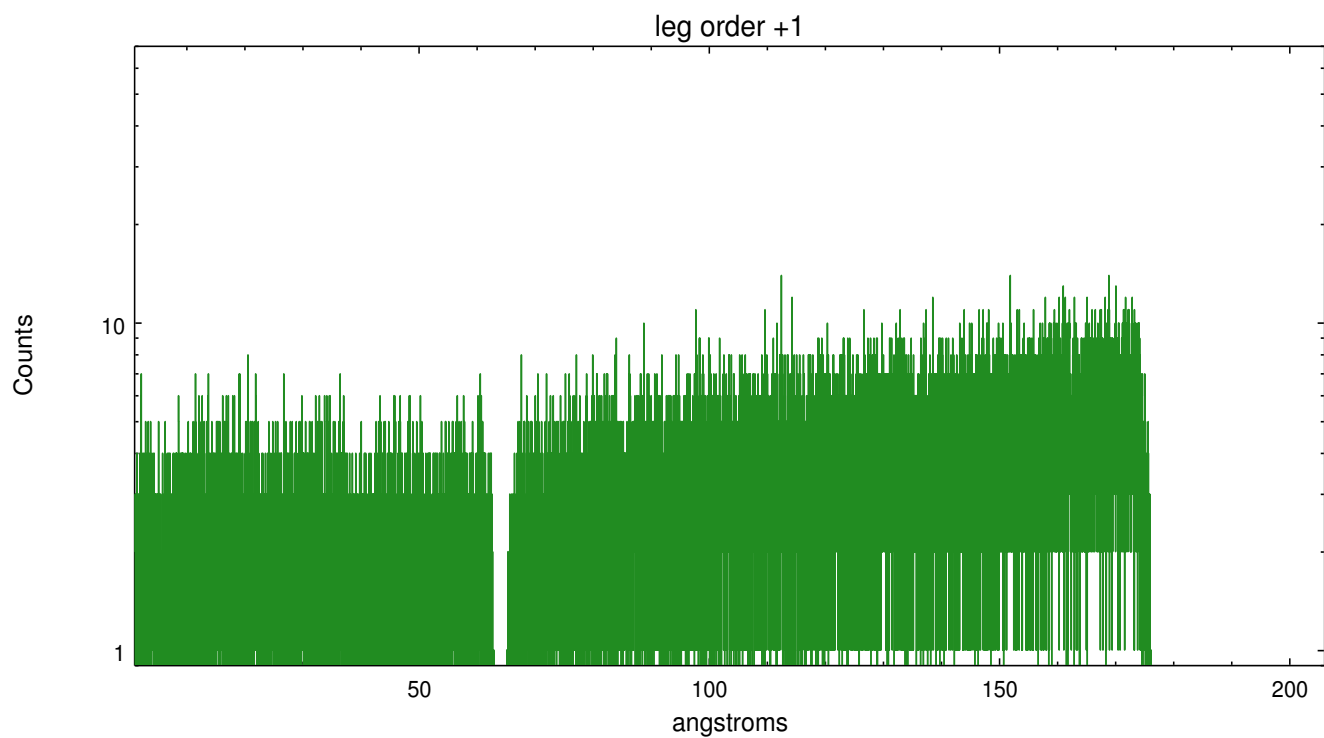
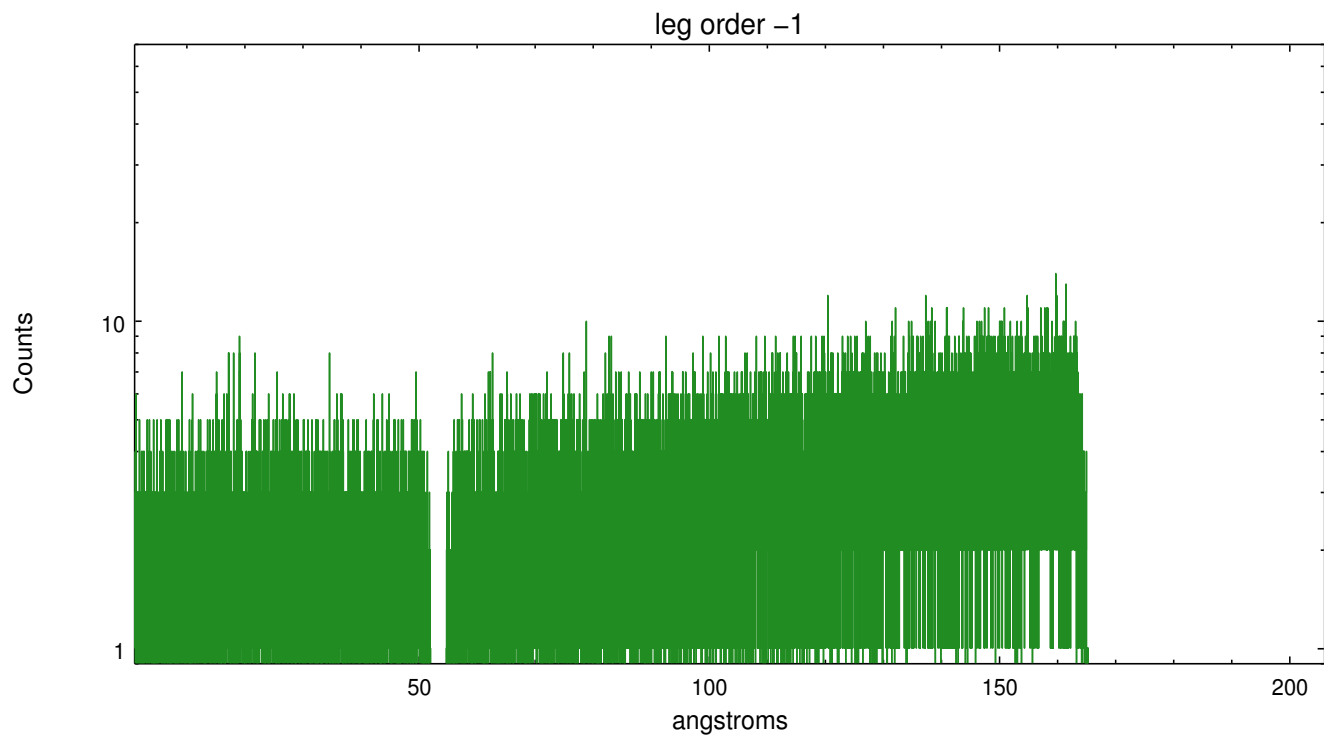


3 Gratings

3.1 LETG Arm



LETG Zero Order



A Summary

A.1 Status

V&V Scientist	Joy Nichols
V&V Date (YYYY-MM-DD)	2013.01.24
V&V Edition	1
V&V Disposition and Status	OK
V&V Charge Time	38.17433

A.2 Comments