

V&V Reference Report

L2 ASCDS Version : 8.4.3

Observation 7304 - L2 Version 3
Chandra X-Ray Center

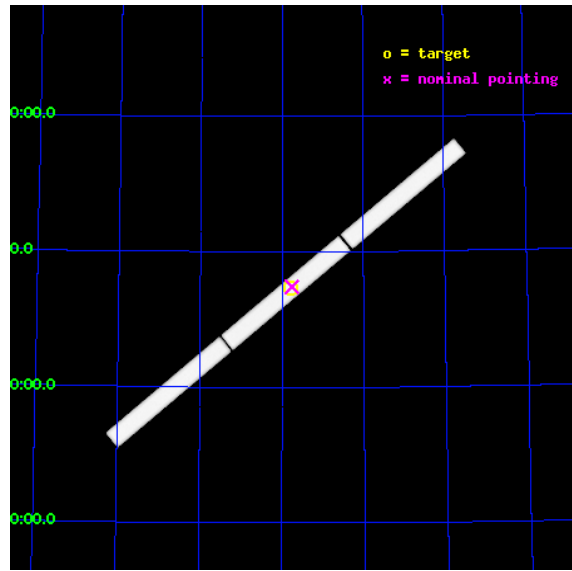
L2 Processing Date : Aug 11 2012

Contents

1	Front	2
2	OBI	3
2.1	OBI	3
2.1.1	Images	3
2.1.2	Parameters	4
2.1.3	Events	4
2.2	Compared Parameters	5
2.3	Aspect	6
2.4	Star Slots	9
2.4.1	Slot 3	9
2.4.2	Slot 4	10
2.4.3	Slot 5	11
2.4.4	Slot 6	12
2.4.5	Slot 7	13
2.5	FID Slots	14
2.5.1	Slot 0	14
2.5.2	Slot 1	15
2.5.3	Slot 2	16
3	Gratings	17
3.1	LETG Arm	17
A	Summary	19
A.1	Status	19
A.2	Comments	19

1 Front

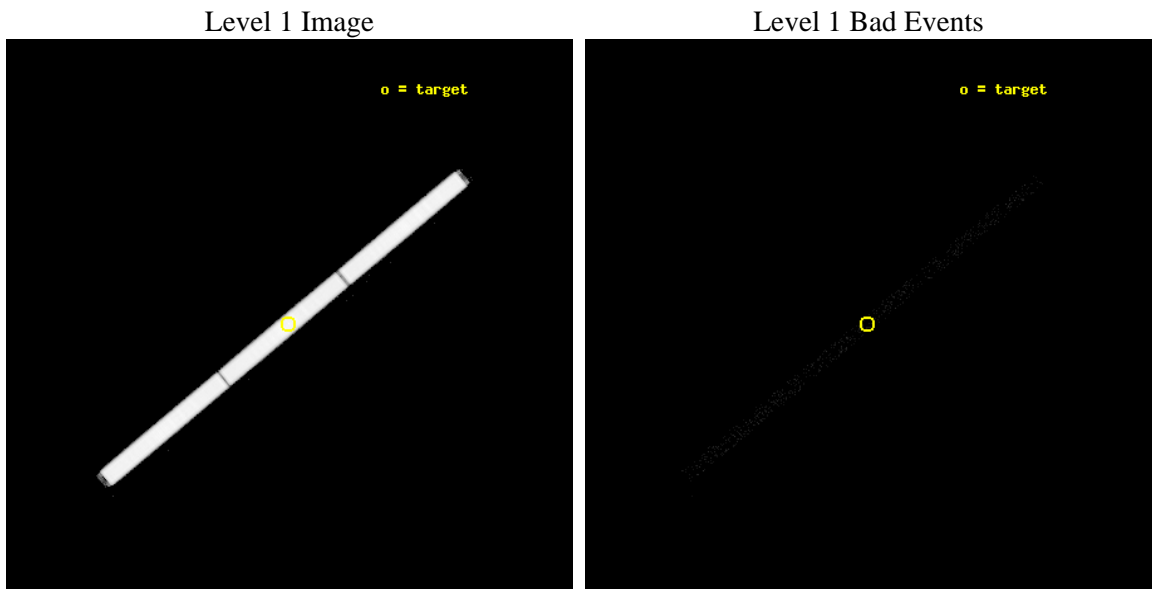
seq_num	200401	Sequence number
obs_id	7304	Observation id
title	What is the origin of H-deficient post-AGB stars?	Proposal title
observer	Prof. Klaus Werner	Principal investigator
object	PG1520+525	Source name
ra_targ	230.445	Observer's specified target RA [deg]
dec_targ	52.367917	Observer's specified target Dec [deg]
ra_nom	230.43925128333	Nominal RA [deg]
dec_nom	52.371011006043	Nominal Dec [deg]
roll_nom	140.07188861598	Nominal Roll [deg]
revision	3	Processing version of data
ontime	46188.552150965	[s]
livetime	45779.016550725	Ontime multiplied by DTCOR
l2events	3380953	Number of level 2 events



2 OBI

2.1 OBI

2.1.1 Images



2.1.2 Parameters

obi_num	0	Obi number	sched_exp_time	46000.000000	[s] Scheduled observation exposure time
ascdsver	8.4.5	Processing system revision	ontime	46188.552150965	[s]
caldbver	4.5.1.1	 	l1events	4568958	Number of level 1 events
date	2012-08-11T06:53:22	Date and time of file creation			
revision	3	Processing version of data			

2.1.3 Events

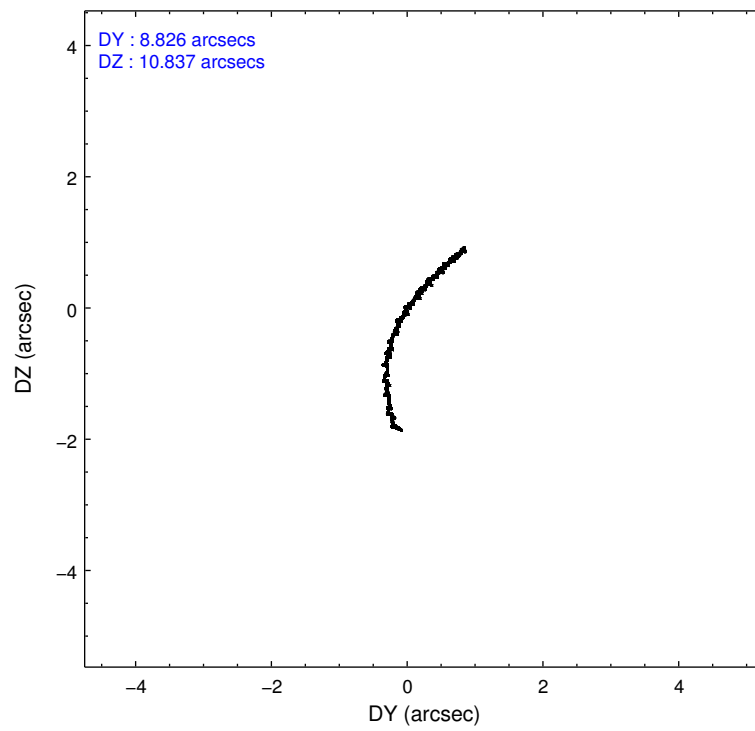
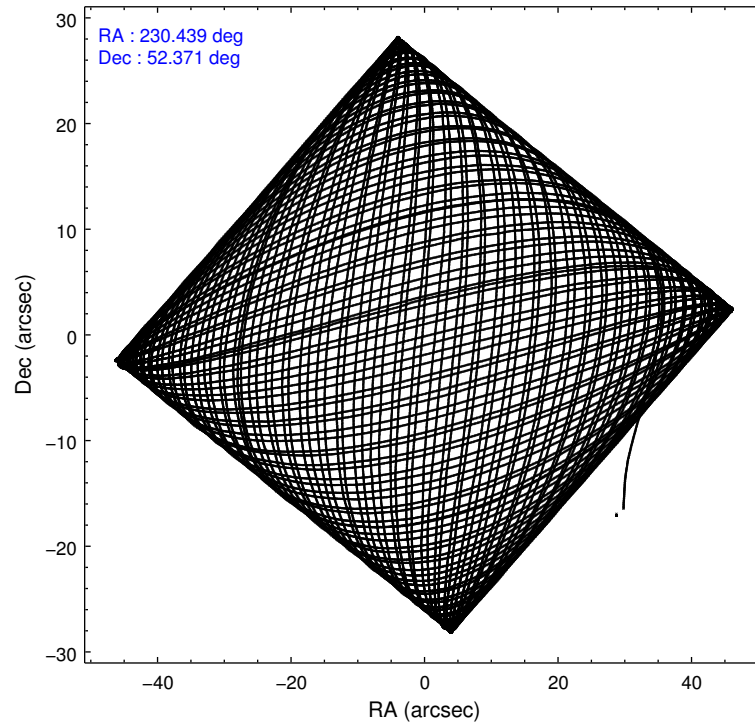
Level 1 Events

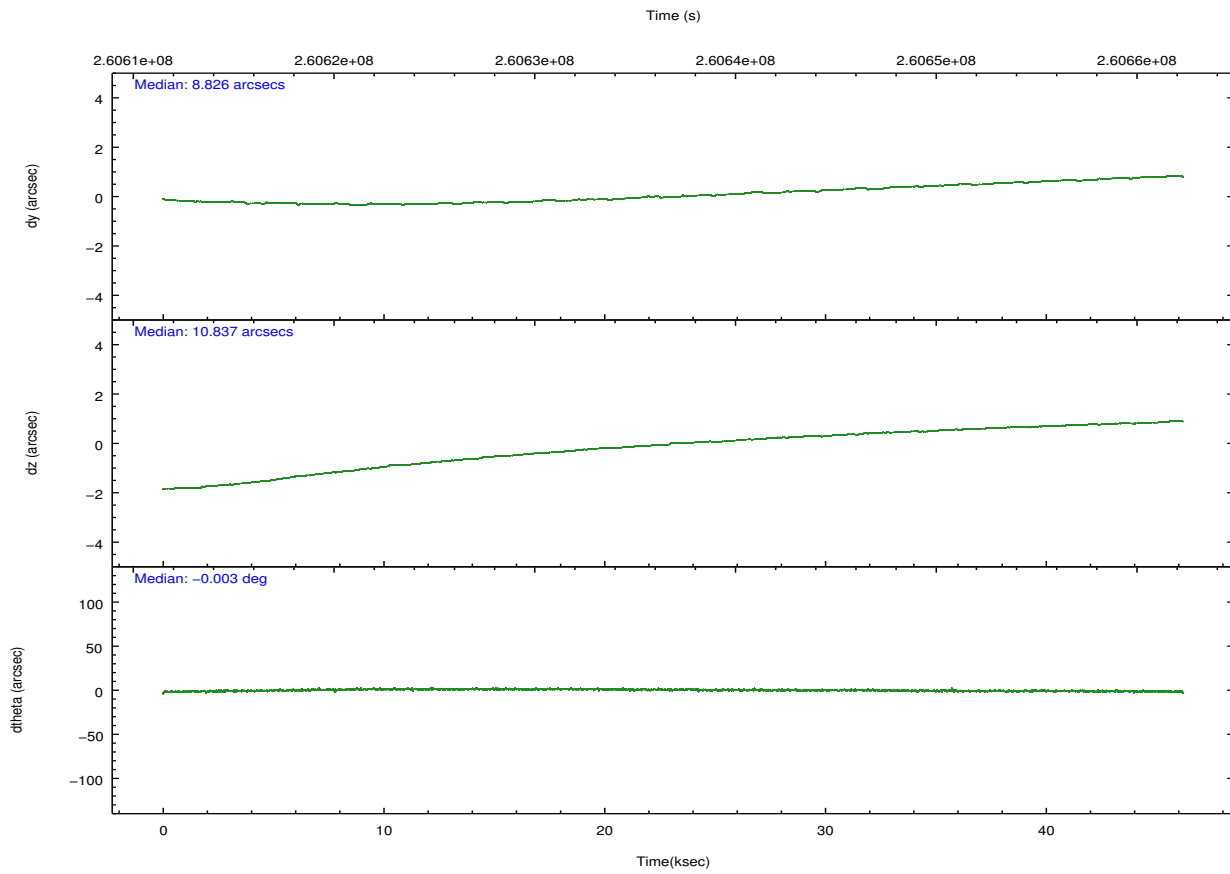
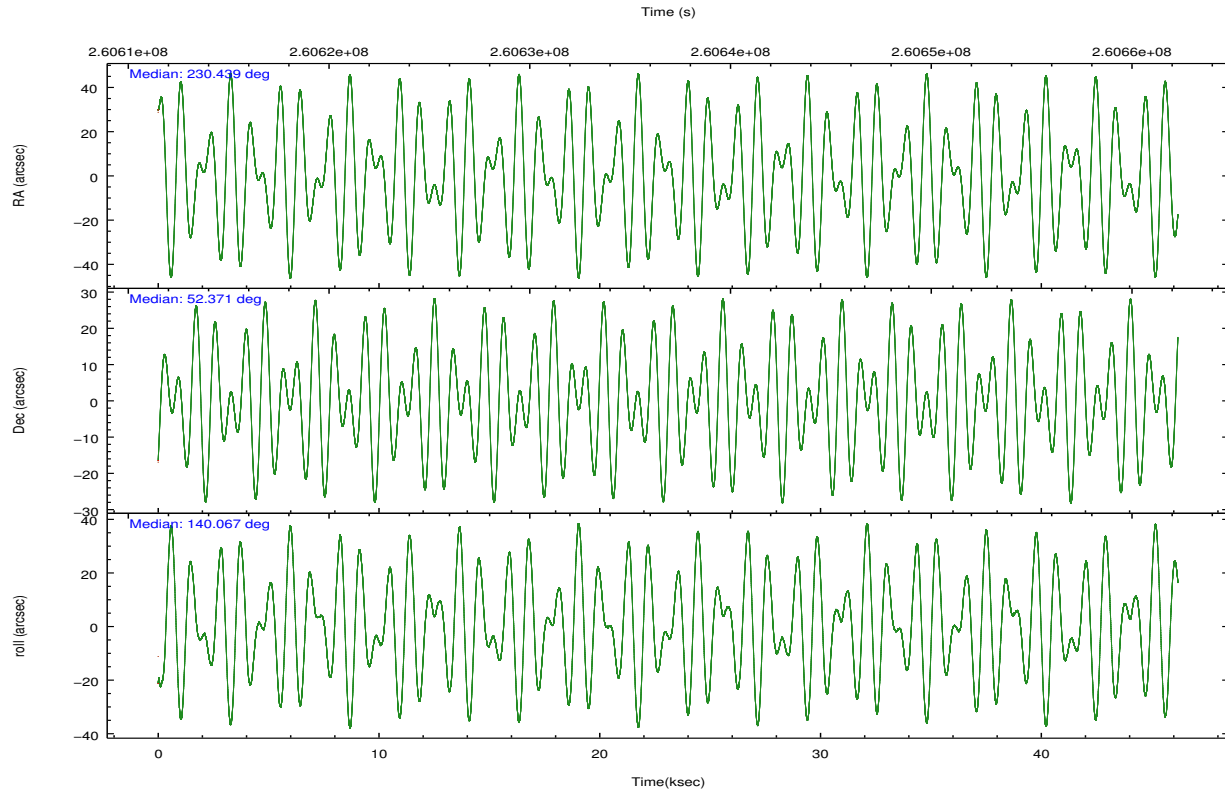
	segment 1	segment 2	segment 3
level 1 events	1543316	1490308	1535334
rejected events	28299	27502	28118
rejected %	1%	1%	1%

2.2 Compared Parameters

Parameter	Planned	Actual	Parameter	Planned	Actual
Instrument	HRC	HRC	Obspar format version number	7	7
Detector	HRC-S	HRC-S	Obspar file type	PREDICTED	ACTUAL
Grating	LETG	LETG	Obspar update status	NONE	UPDATED
Data mode	OBSERVING	OBSERVING			
Observation mode	POINTING	POINTING			
[deg] Pointing RA	230.485740	230.4392512833334			
[deg] Pointing Dec	52.367484	52.37101100604325			
[deg] Pointing Roll	139.967733	140.0718886159781			
[mm] SIM focus pos	-1.429586	-1.428180813131781			
[mm] SIM defocus	0.1037507710433287	0.1051558262725154			
[mm] SIM translation stage pos	250.455976	250.4635187648994			
[mm] SIM translation stage offset	0	-0.007540371344731511			
[s] Observation start time (MET)	260613979.184000	260612929.01956			
Observation start date	2006-04-05T08:45:14	2006-04-05T08:28:49			
[s] Observation end time (MET)	260659979.184000	260660641.23428			
Observation end date	2006-04-05T21:31:54	2006-04-05T21:44:01			

2.3 Aspect



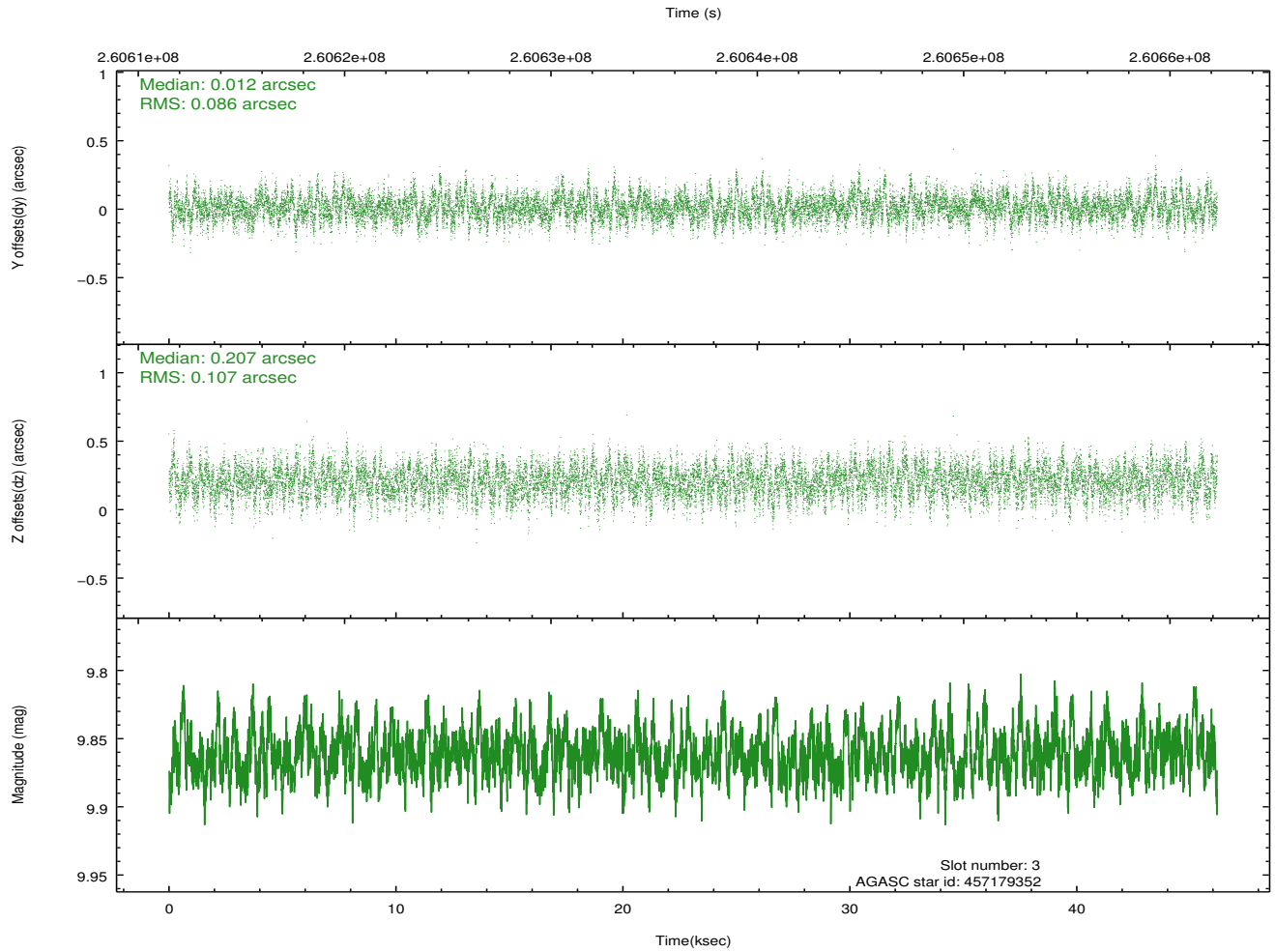
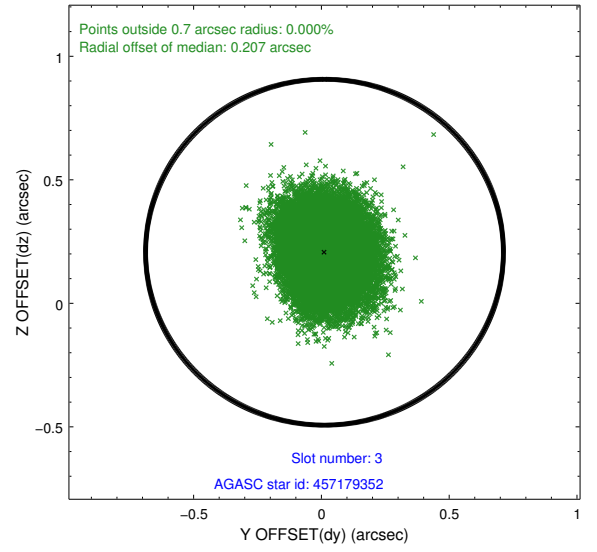
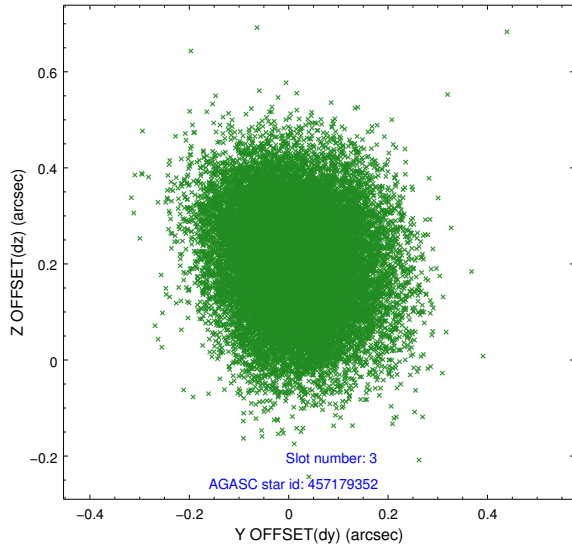


Slot Statistics

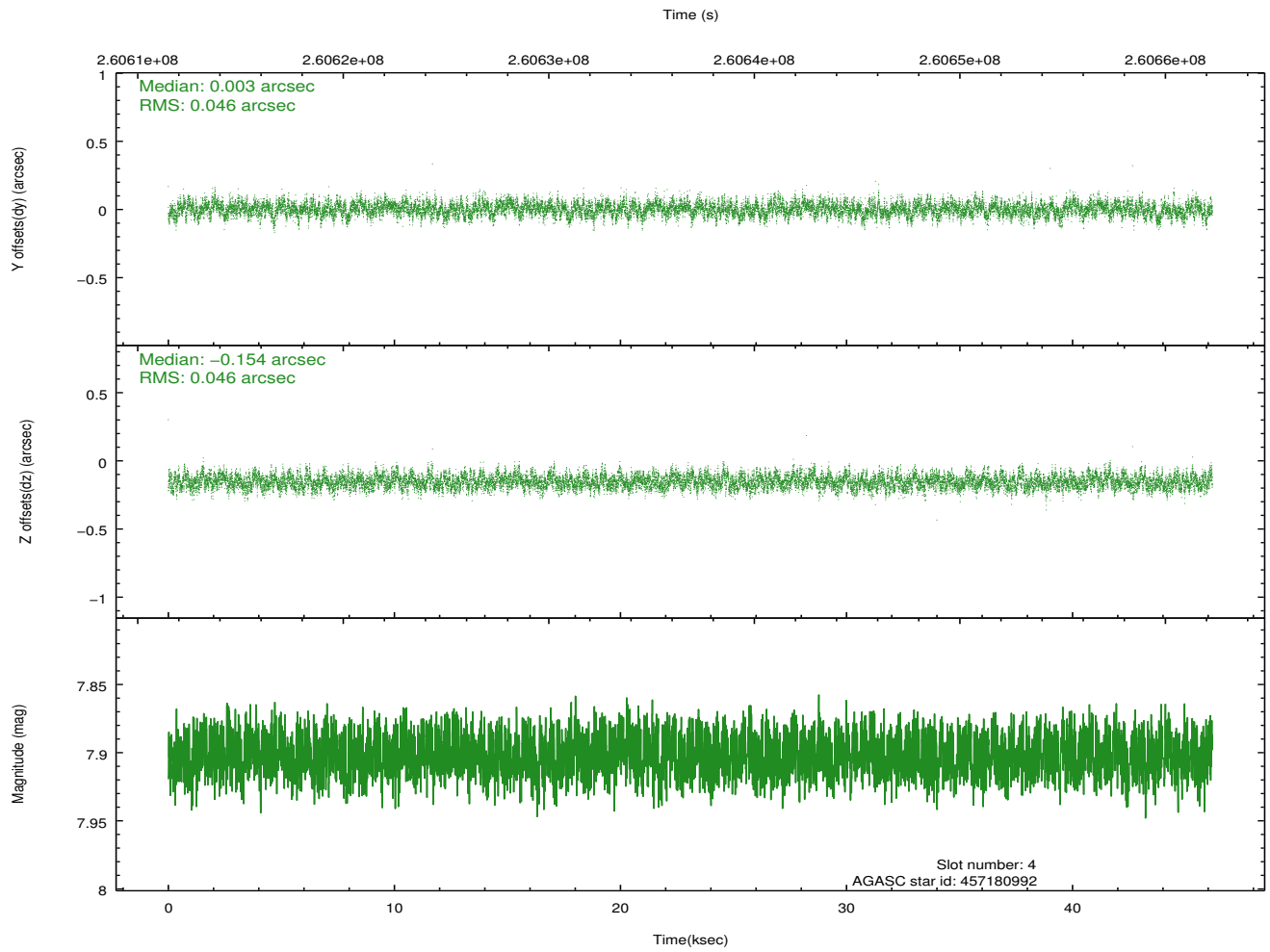
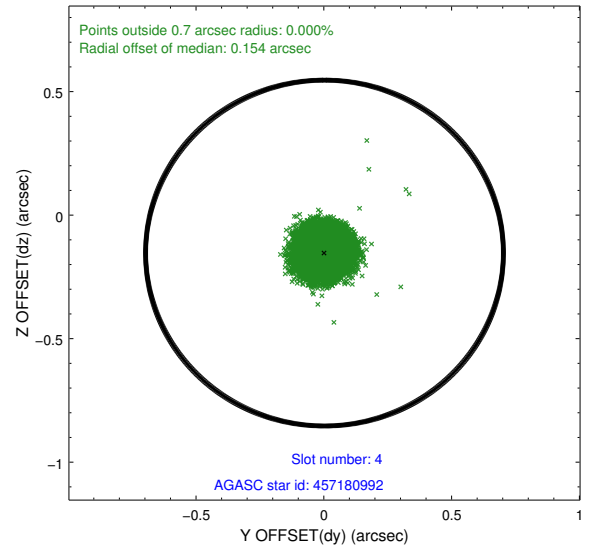
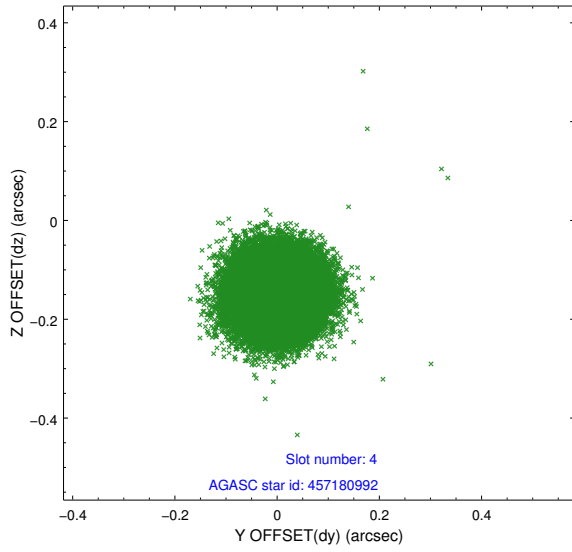
slot	status	id	mag	n_pts	med_dy	med_dz	dr1	dr2	ra	dec	mean_y	mean_z
0	FID	HRC-S-1	7.01	11267	0.140	-0.181	0.023	0.041	0.000000	0.000000	-1163.12	-459.30
1	FID	HRC-S-2	7.00	11266	0.146	-0.112	0.011	0.020	0.000000	0.000000	1236.46	-451.93
2	FID	HRC-S-3	7.02	11266	0.104	-0.009	0.030	0.051	0.000000	0.000000	-1165.76	570.35
3	GUIDE	457179352	9.86	22516	0.012	0.207	0.147	0.237	231.588393	52.490307	-1553.87	-1906.95
4	GUIDE	457180992	7.90	22528	0.003	-0.154	0.070	0.111	230.362137	52.344454	155.44	238.33
5	GUIDE	457181616	8.82	22519	-0.032	-0.030	0.079	0.129	229.954323	52.287535	714.02	969.47
6	GUIDE	457182176	8.44	22485	-0.002	-0.119	0.072	0.117	230.710636	52.153119	-875.76	270.73
7	GUIDE	506994248	8.29	22526	0.020	0.094	0.074	0.119	230.374449	53.063992	1797.83	-1764.69

2.4 Star Slots

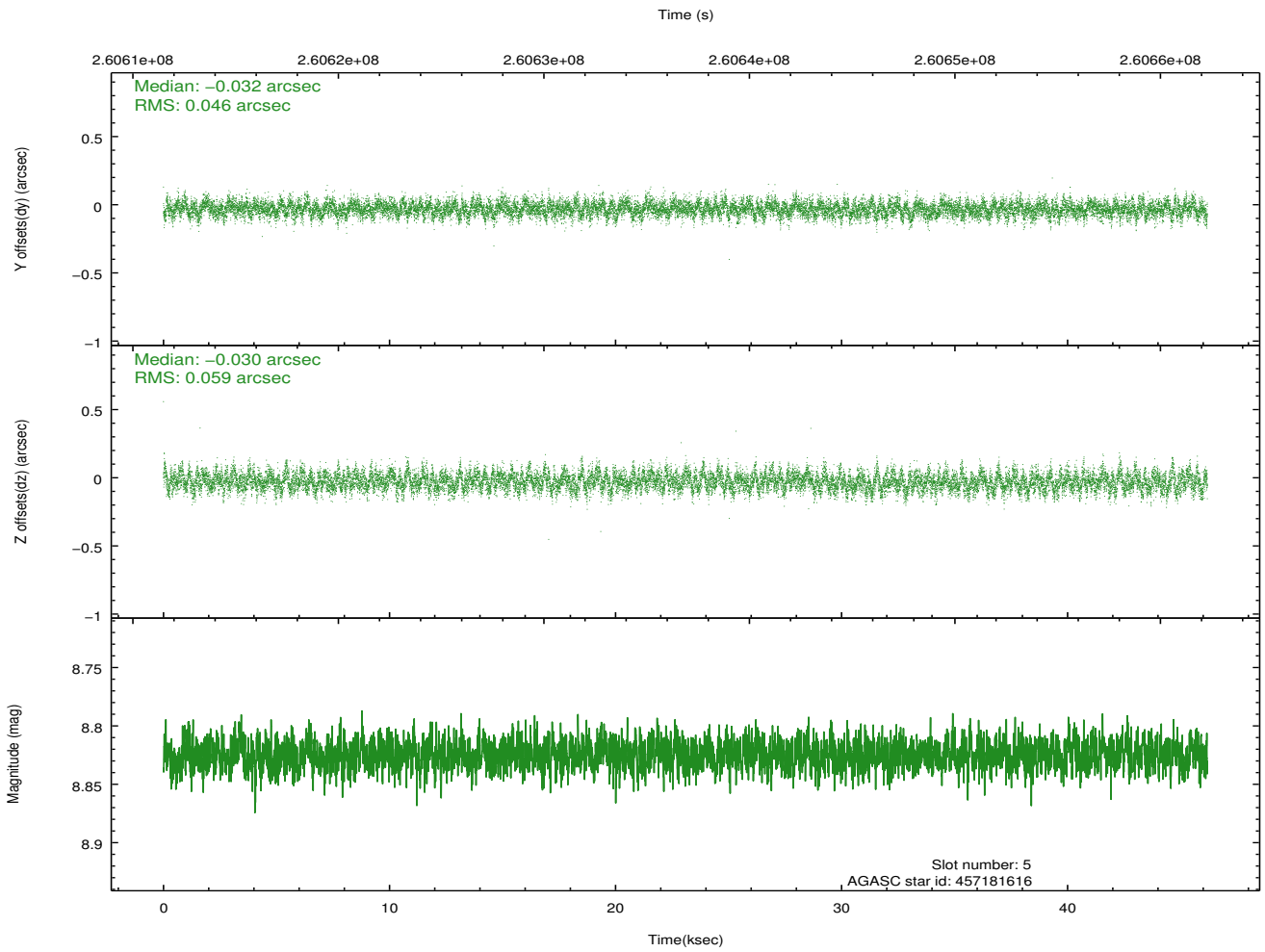
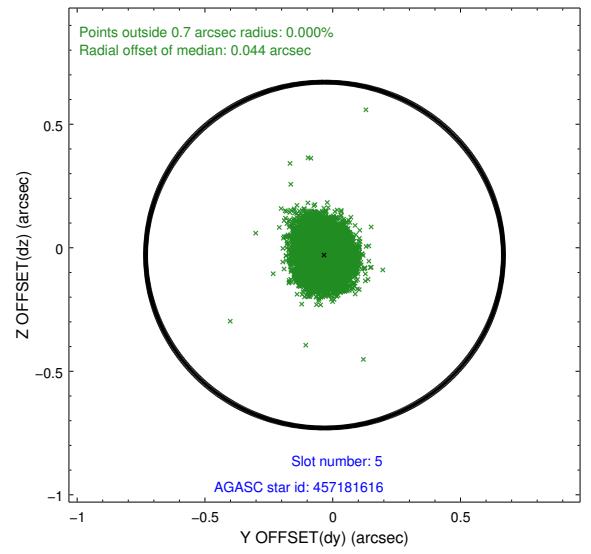
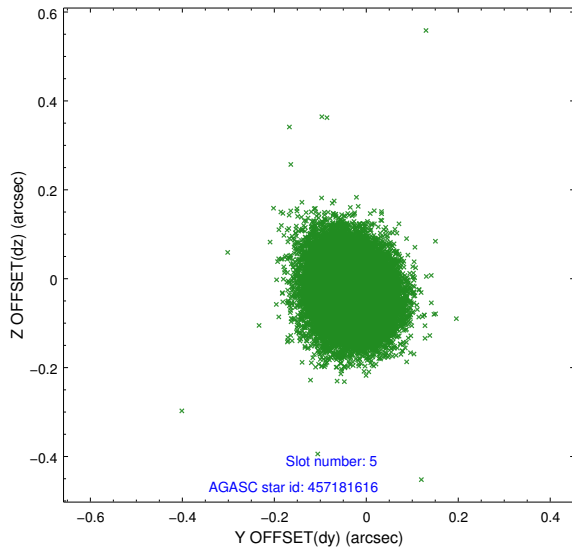
2.4.1 Slot 3



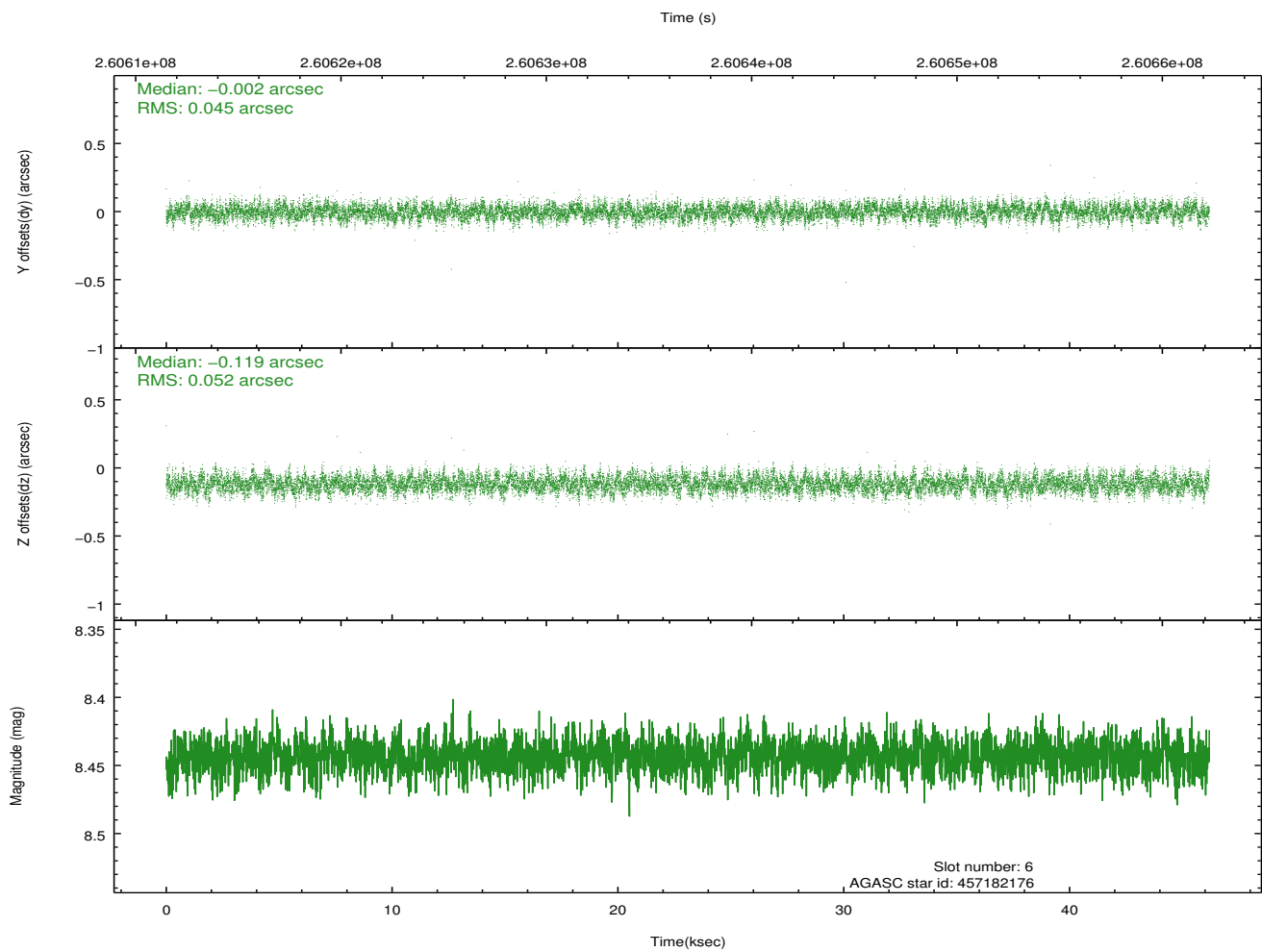
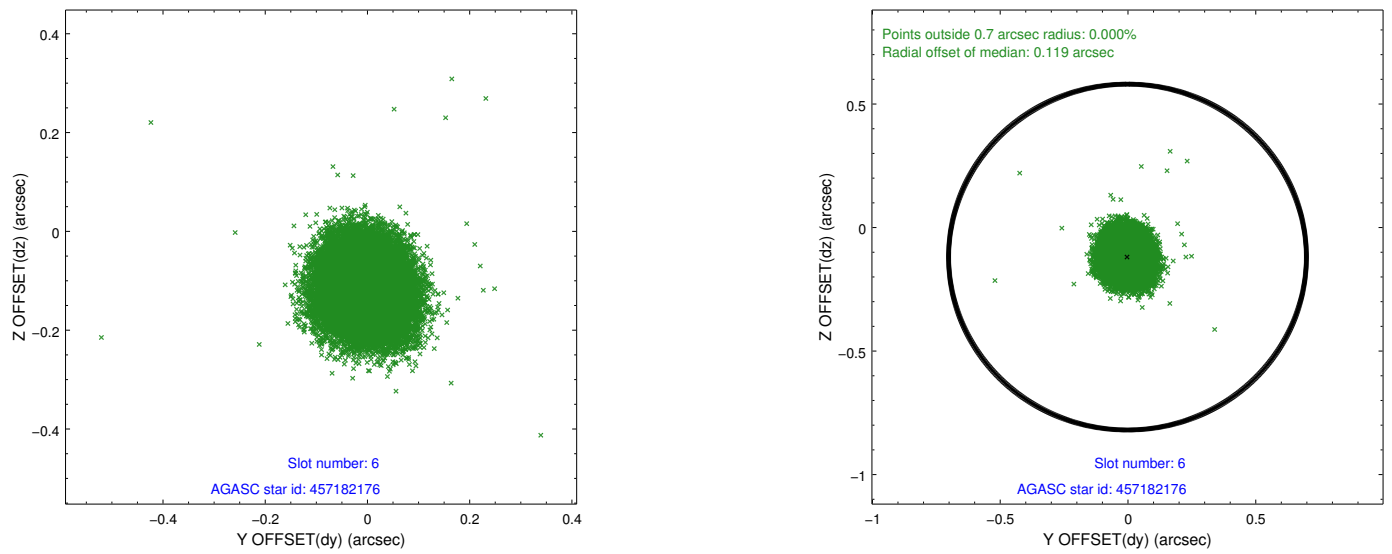
2.4.2 Slot 4



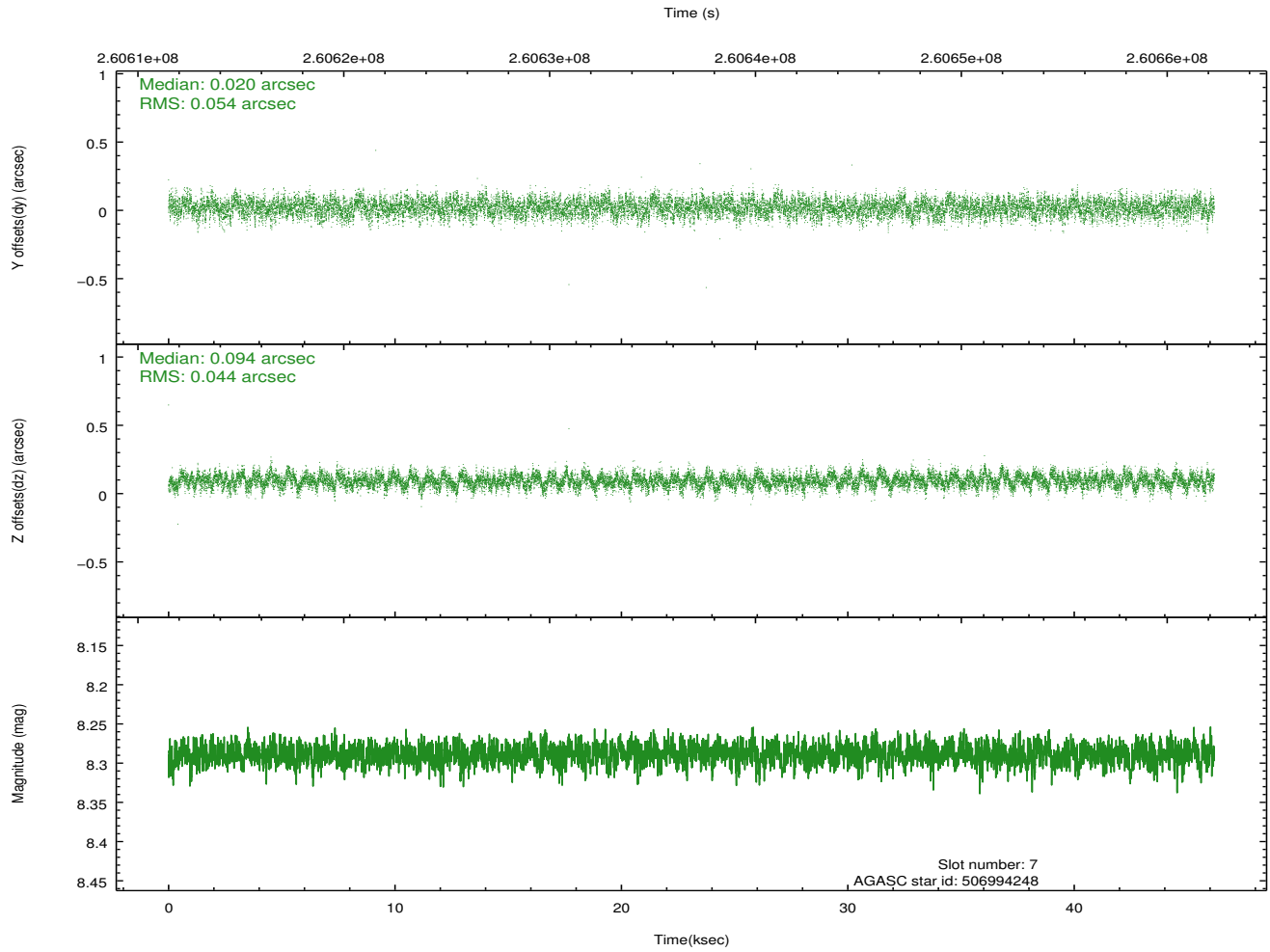
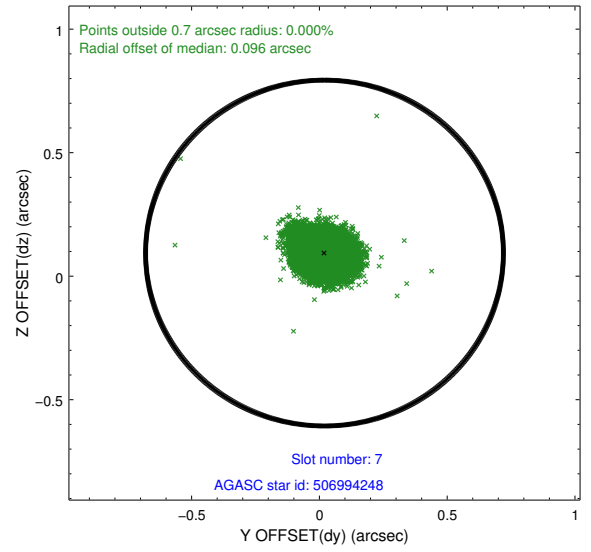
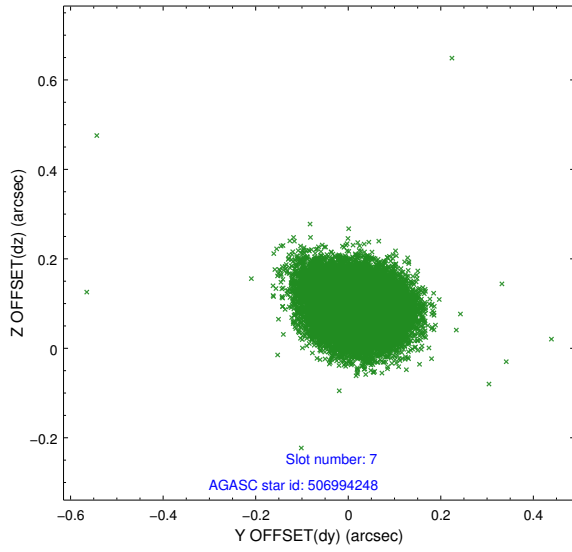
2.4.3 Slot 5



2.4.4 Slot 6

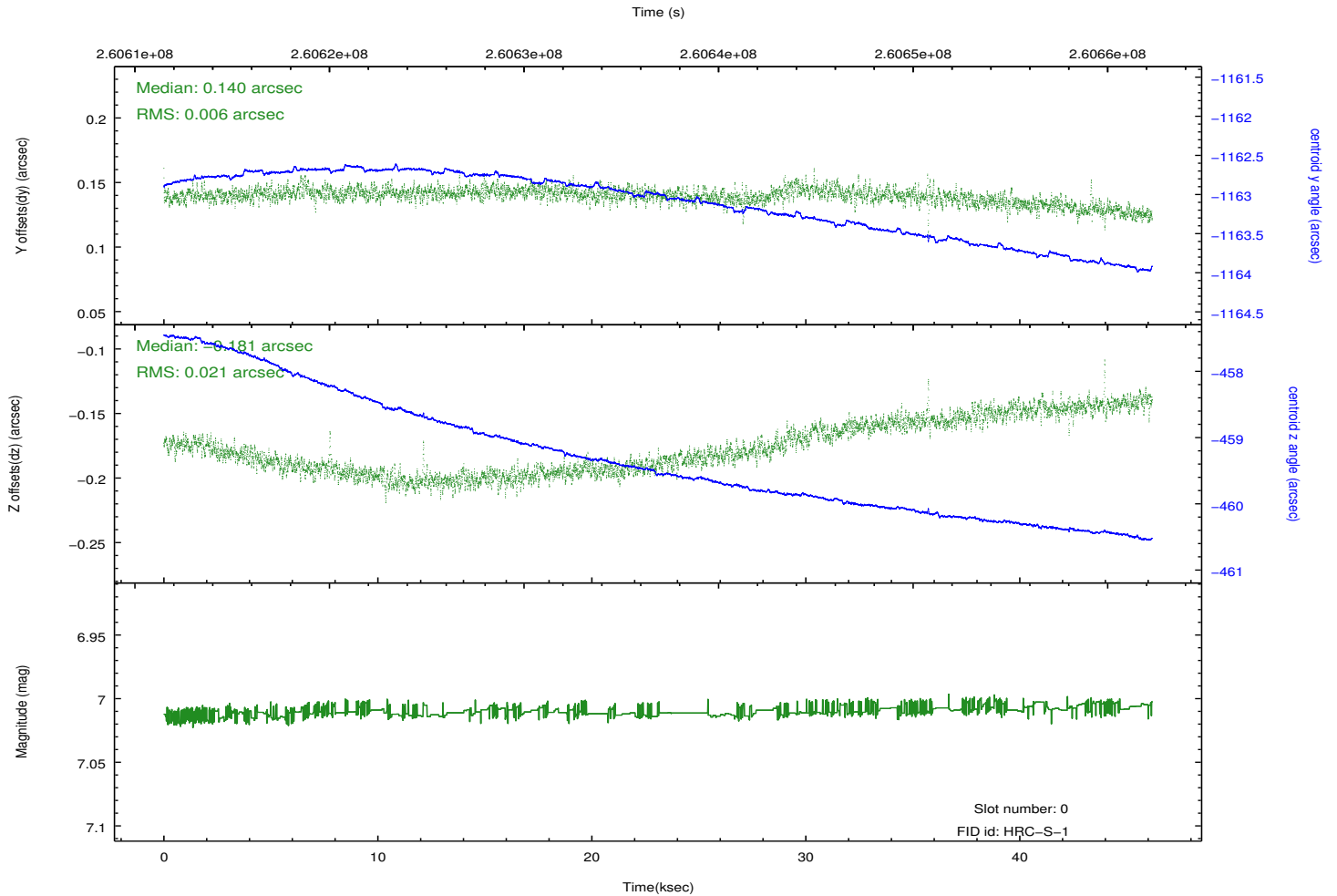
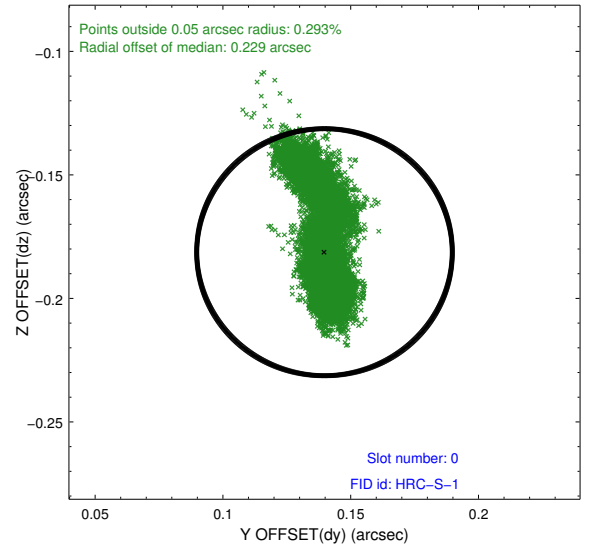
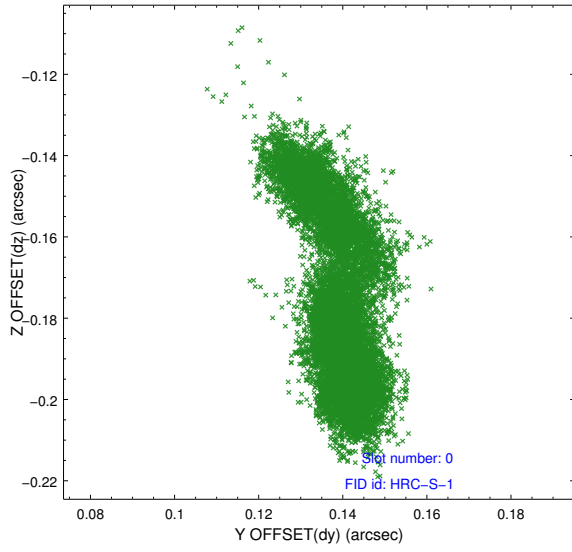


2.4.5 Slot 7

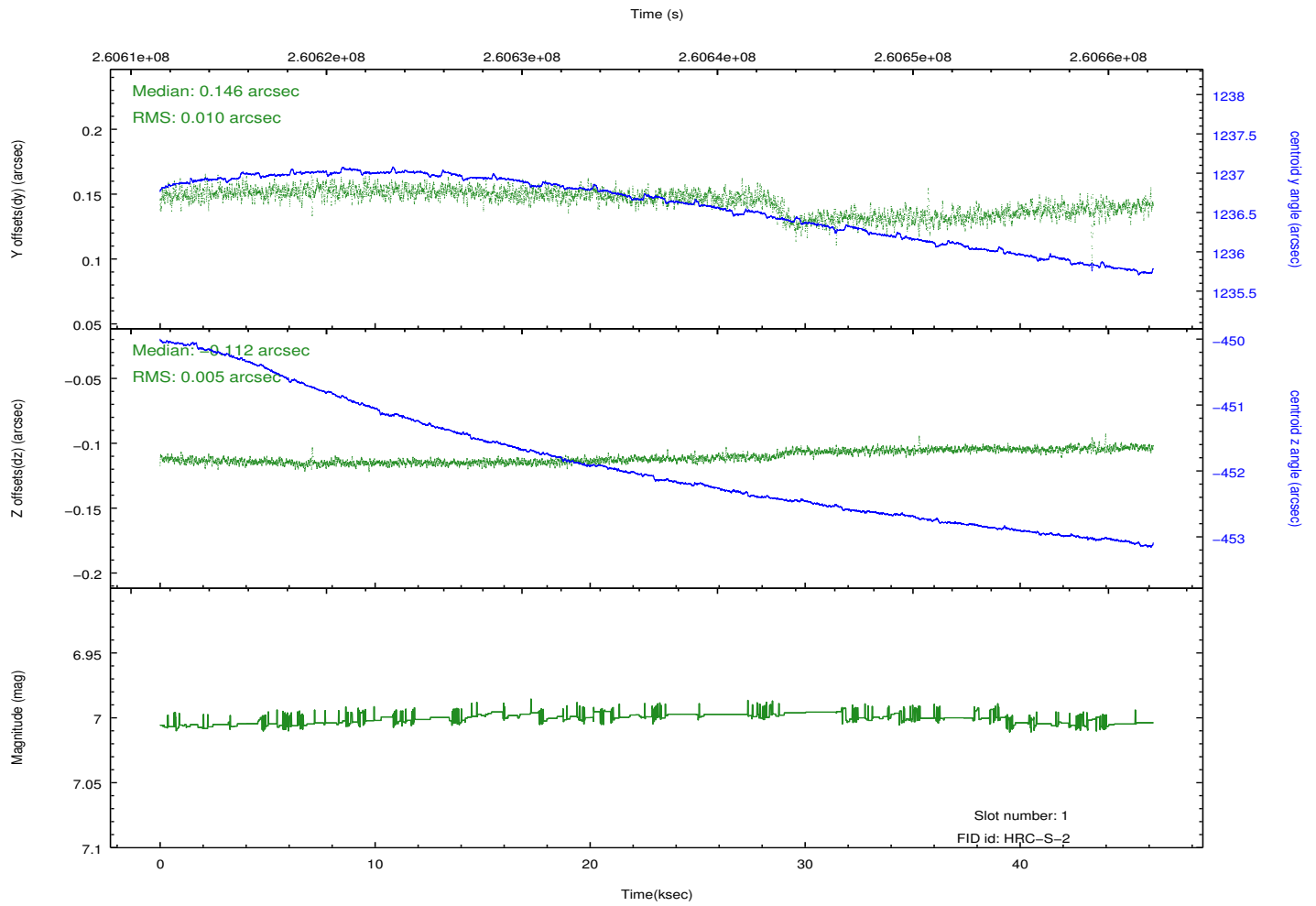
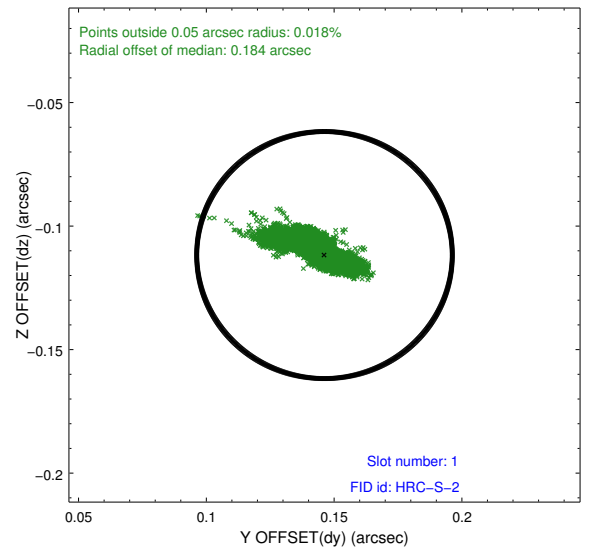
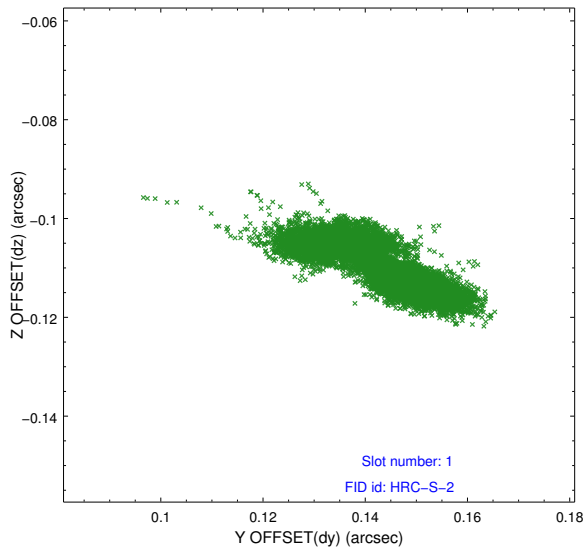


2.5 FID Slots

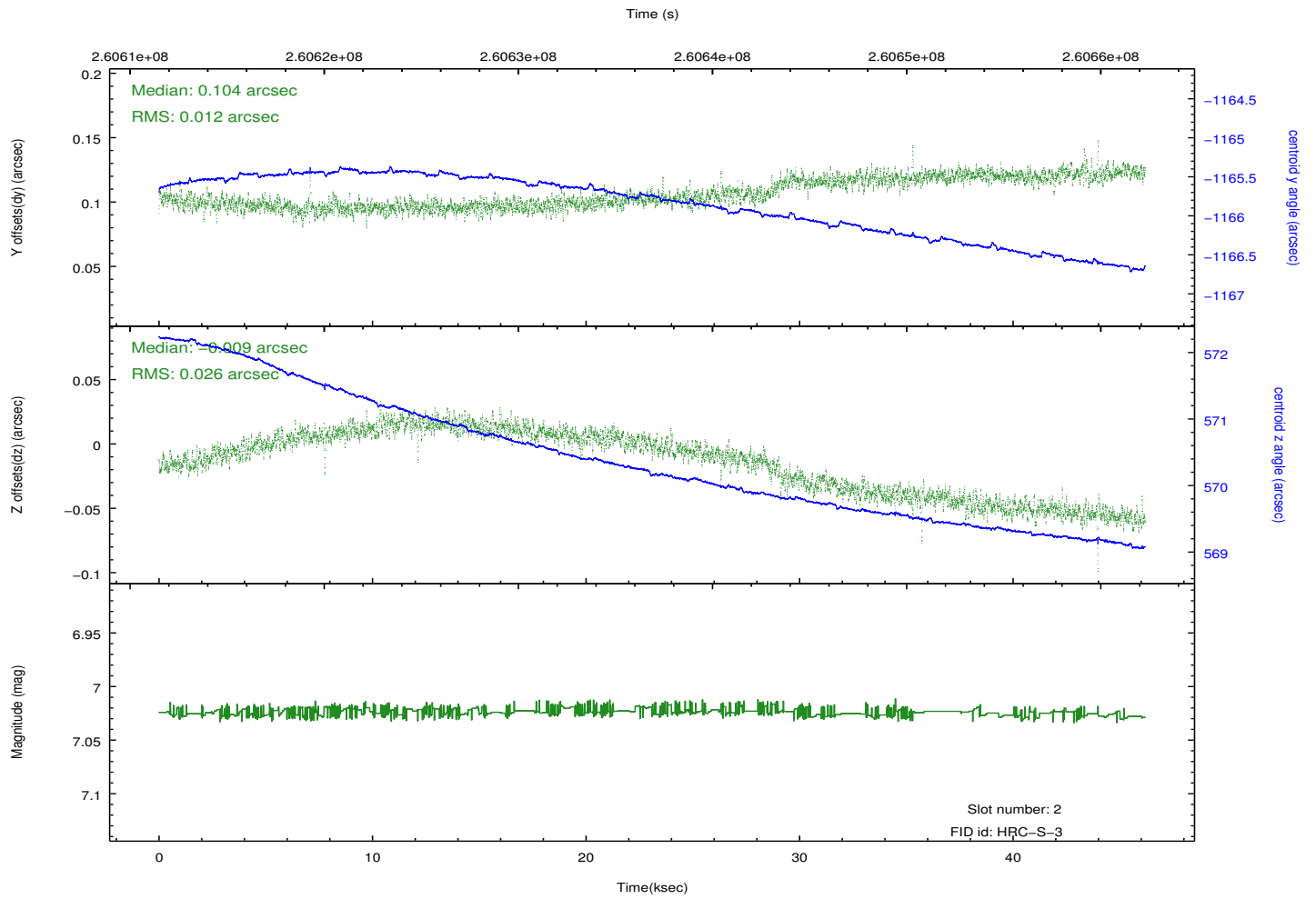
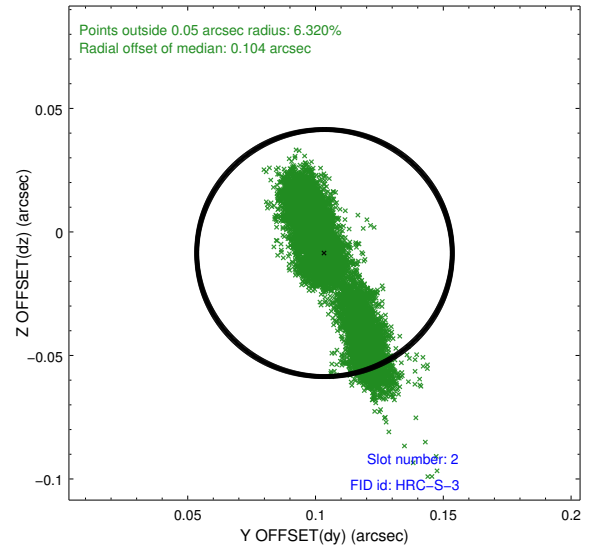
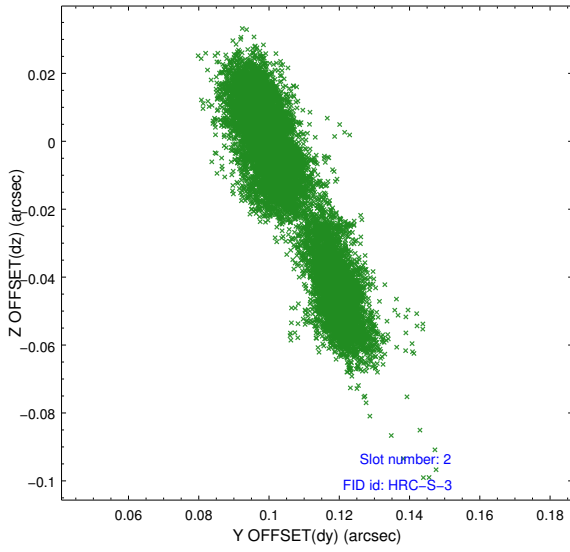
2.5.1 Slot 0



2.5.2 Slot 1

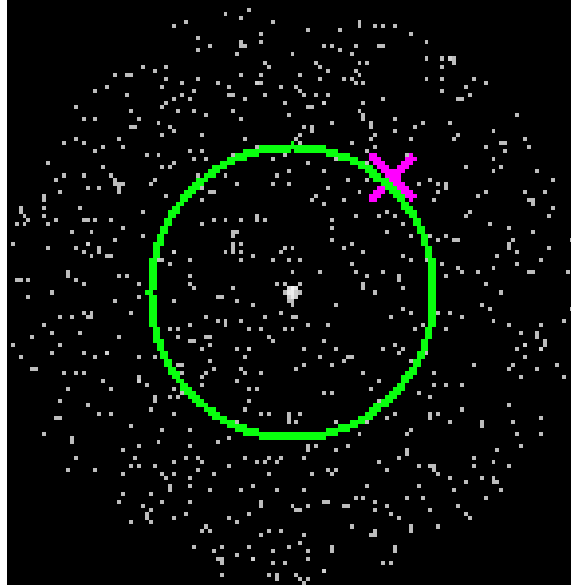


2.5.3 Slot 2

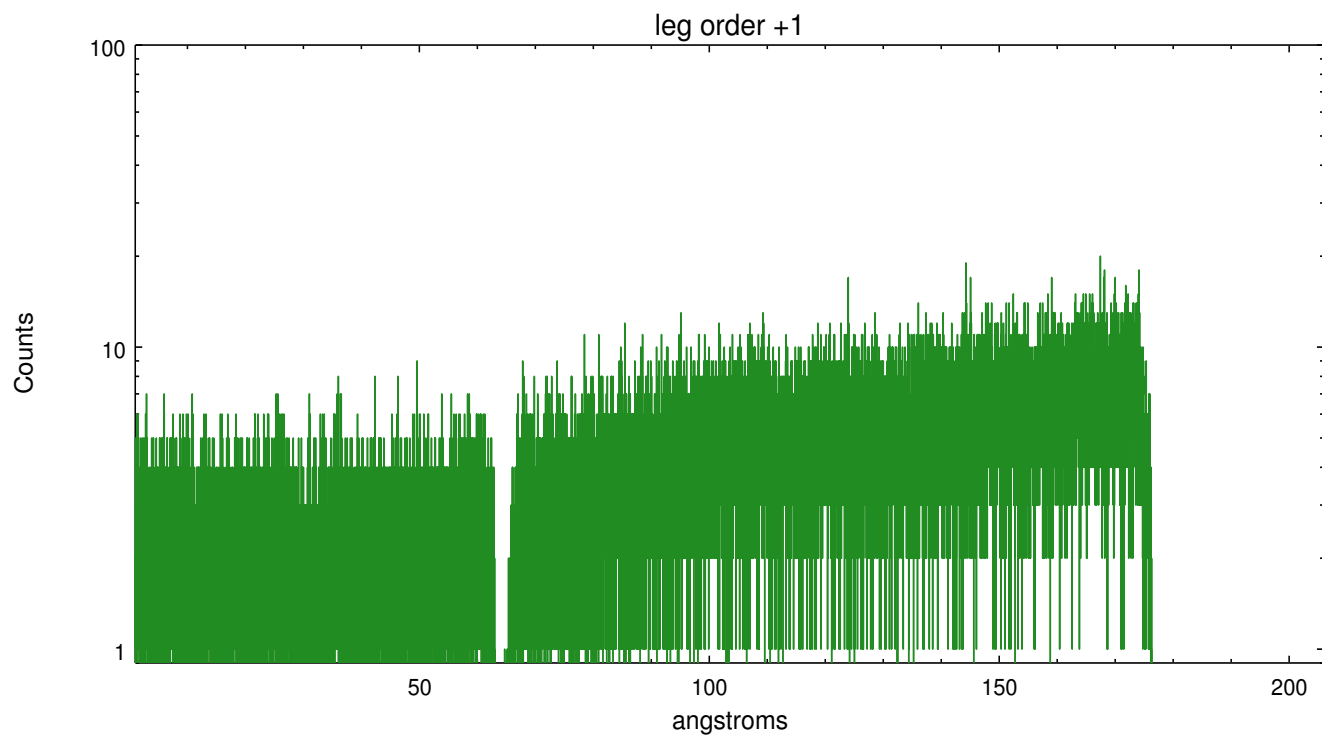
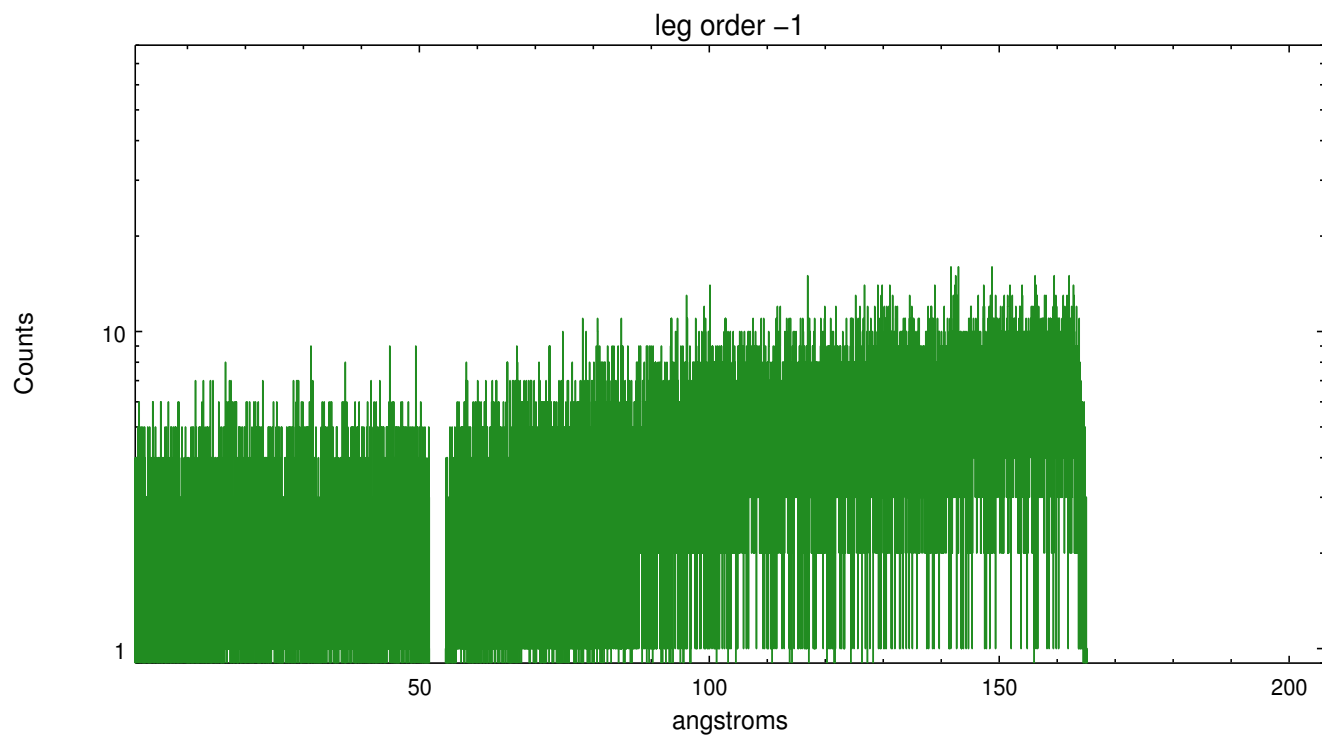


3 Gratings

3.1 LETG Arm



LETG Zero Order



A Summary

A.1 Status

V&V Scientist	Joy Nichols
V&V Date (YYYY-MM-DD)	2012.08.17
V&V Edition	1
V&V Disposition and Status	OK
V&V Charge Time	46.1885521

A.2 Comments

Spike in count rate from about 100 counts per second to about 200 counts per second between 42 and 46 ksec into the observation, due to high radiation environment. This time period is included in the good time interval.