

# V&V Reference Report

## L2 ASCDS Version : 8.4.5

Observation 744 - L2 Version 3  
Chandra X-Ray Center

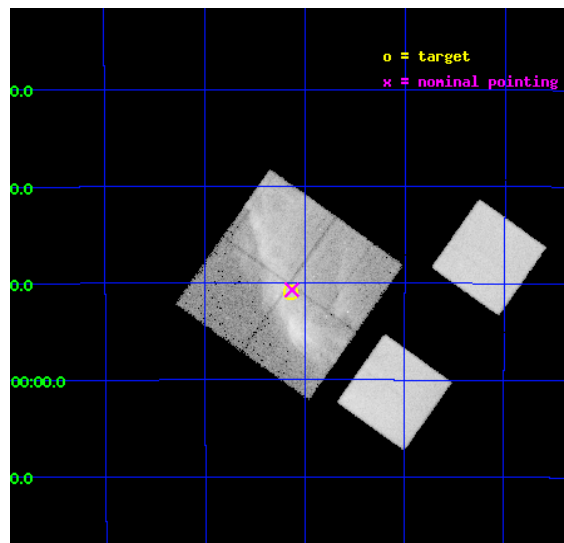
L2 Processing Date : Sep 5 2012

## Contents

<b>1</b>	<b>Front</b>	<b>2</b>
<b>2</b>	<b>OBI</b>	<b>3</b>
2.1	OBI . . . . .	3
2.1.1	Images . . . . .	3
2.1.2	Bias . . . . .	3
2.1.3	Parameters . . . . .	4
2.1.4	Events . . . . .	4
2.2	Compared Parameters . . . . .	5
2.3	Aspect . . . . .	6
2.4	Star Slots . . . . .	9
2.4.1	Slot 3 . . . . .	9
2.4.2	Slot 4 . . . . .	10
2.4.3	Slot 5 . . . . .	11
2.4.4	Slot 6 . . . . .	12
2.4.5	Slot 7 . . . . .	13
2.5	FID Slots . . . . .	14
2.5.1	Slot 0 . . . . .	14
2.5.2	Slot 1 . . . . .	15
2.5.3	Slot 2 . . . . .	16
<b>A</b>	<b>Summary</b>	<b>17</b>
A.1	Status . . . . .	17
A.2	Comments . . . . .	17

# 1 Front

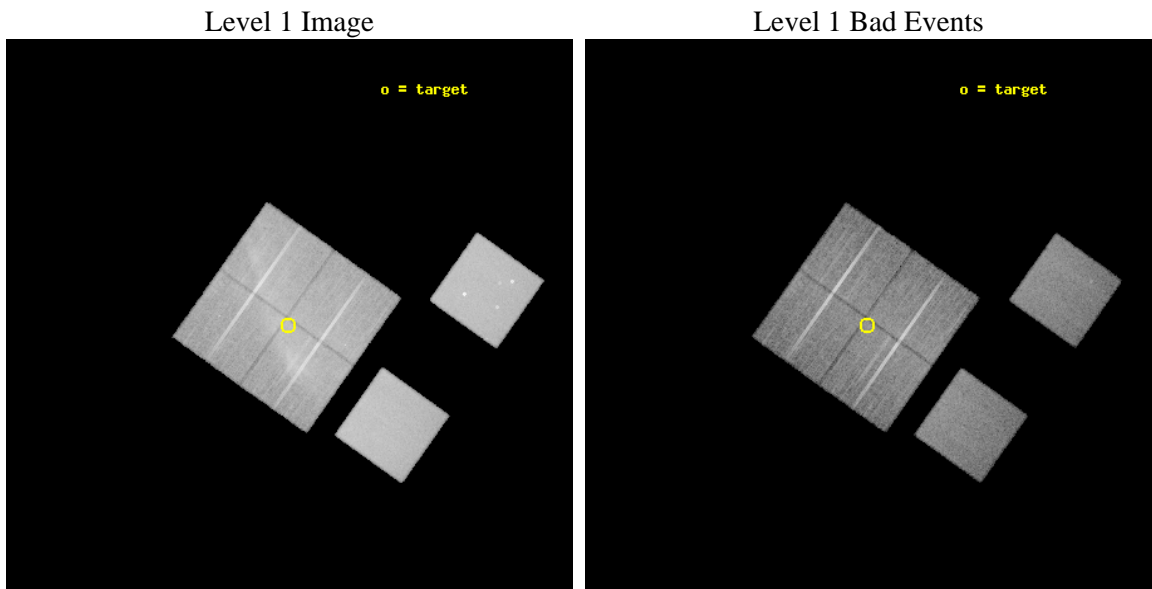
seq_num	500040	Sequence number
obs_id	744	Observation id
title	POSSIBLE EXPLOSION FRAGMENTS IN THE VELA SUPERNOVA REMNANT	Proposa
observer	Dr. Paul Plucinsky	Principal investigator
object	VELA BULLET D	Source name
dtycycle	0	&#160
cycle	P	events from which exps? Prim/Second/Both
ra_targ	135.034	Observer's specified target RA [deg]
dec_targ	-45.85	Observer's specified target Dec [deg]
ra_nom	135.03252748903	Nominal RA [deg]
dec_nom	-45.845228087482	Nominal Dec [deg]
roll_nom	125.36306050957	Nominal Roll [deg]
revision	3	Processing version of data
ontime	31052.506695628	Sum of GTIs [s]
livetime	30659.301158273	Livetime [s]
ontime0	31052.629815623	Sum of GTIs [s]
ontime1	31052.424615622	Sum of GTIs [s]
ontime2	31052.465655625	Sum of GTIs [s]
ontime3	31052.506695628	Sum of GTIs [s]
ontime5	31052.547715694	Sum of GTIs [s]
ontime7	31052.58877562	Sum of GTIs [s]
l2events	533456	Number of level 2 events



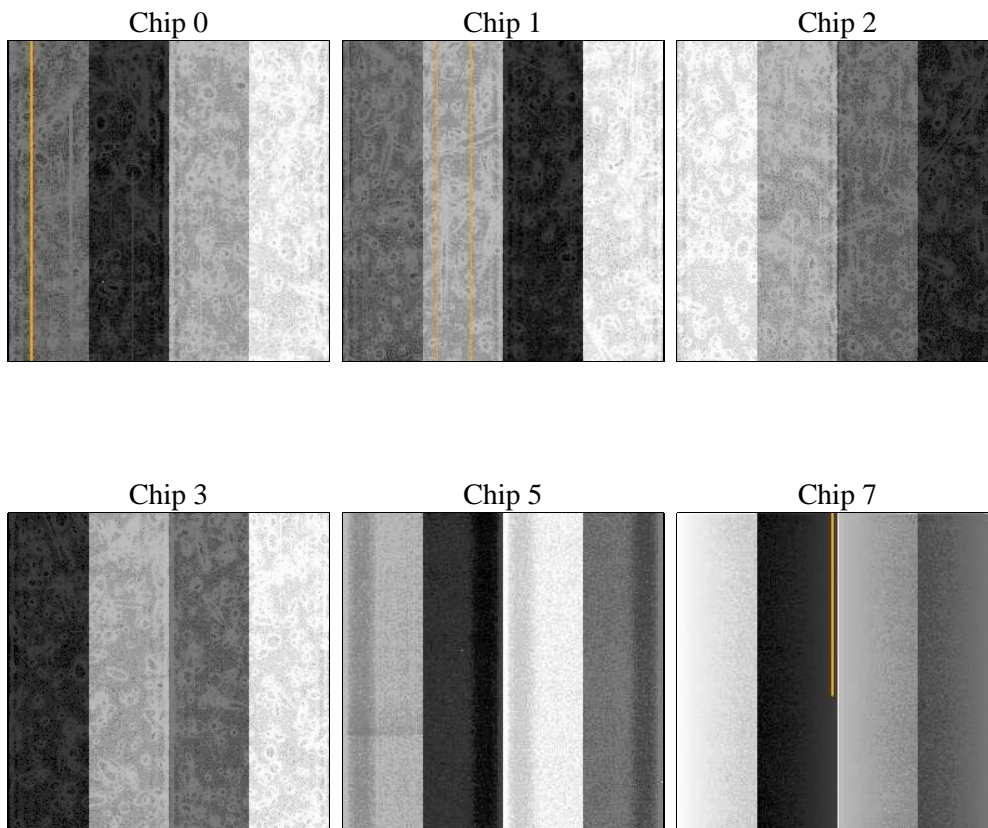
## 2 OBI

### 2.1 OBI

#### 2.1.1 Images



#### 2.1.2 Bias



### 2.1.3 Parameters

obi_num	0	Obi number	sched_exp_time	31300.000000	[s] Scheduled observation exposure time
ascdsver	8.4.5	Processing system revision	ontime	31052.506695628	Sum of GTIs [s]
caldbver	4.5.1.1	&#160	ontime0	31052.629815623	Sum of GTIs [s]
date	2012-09-05T12:35:48	Date and time of file creation	ontime1	31052.424615622	Sum of GTIs [s]
revision	3	Processing version of data	ontime2	31052.465655625	Sum of GTIs [s]
			ontime3	31052.506695628	Sum of GTIs [s]
			ontime5	31052.547715694	Sum of GTIs [s]
			ontime7	31052.58877562	Sum of GTIs [s]
			l1events	1443911	Number of level 1 events

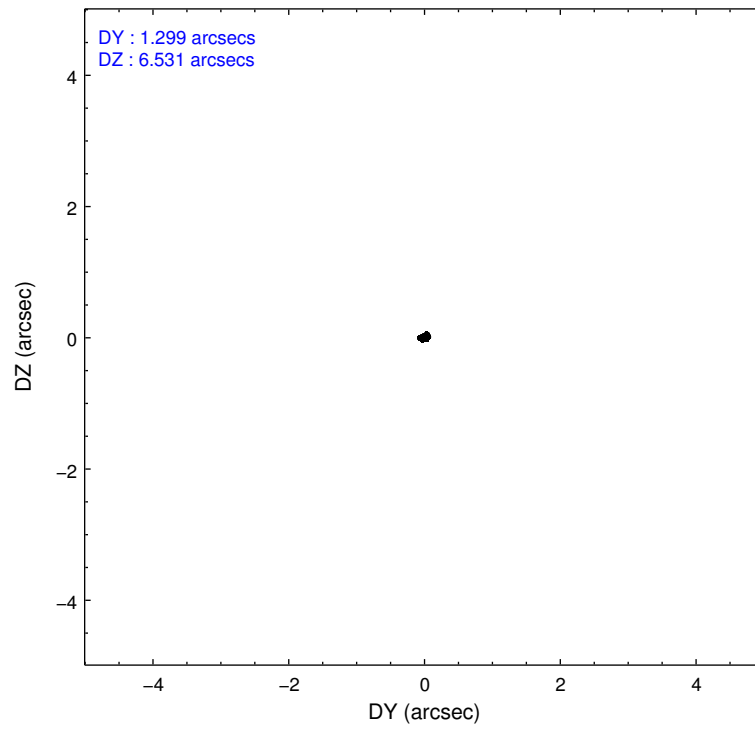
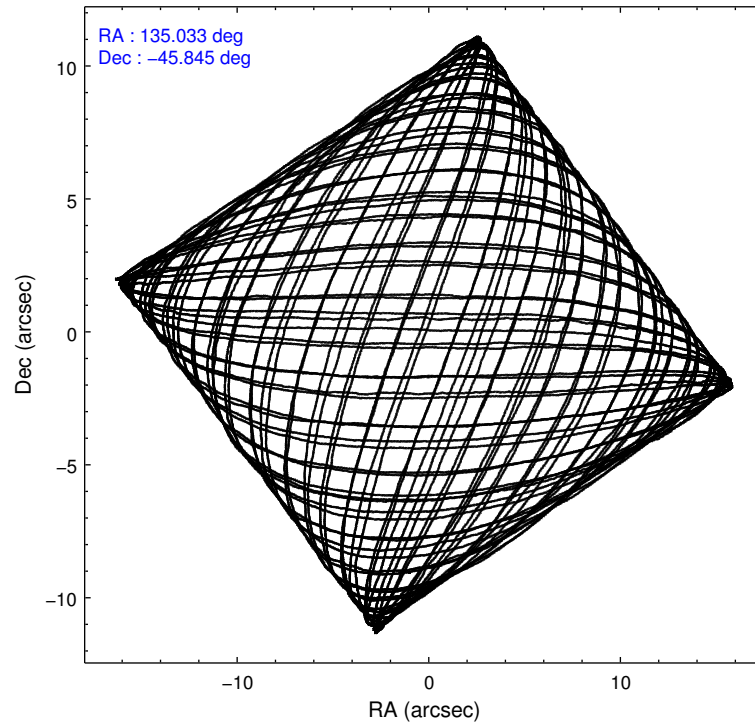
### 2.1.4 Events

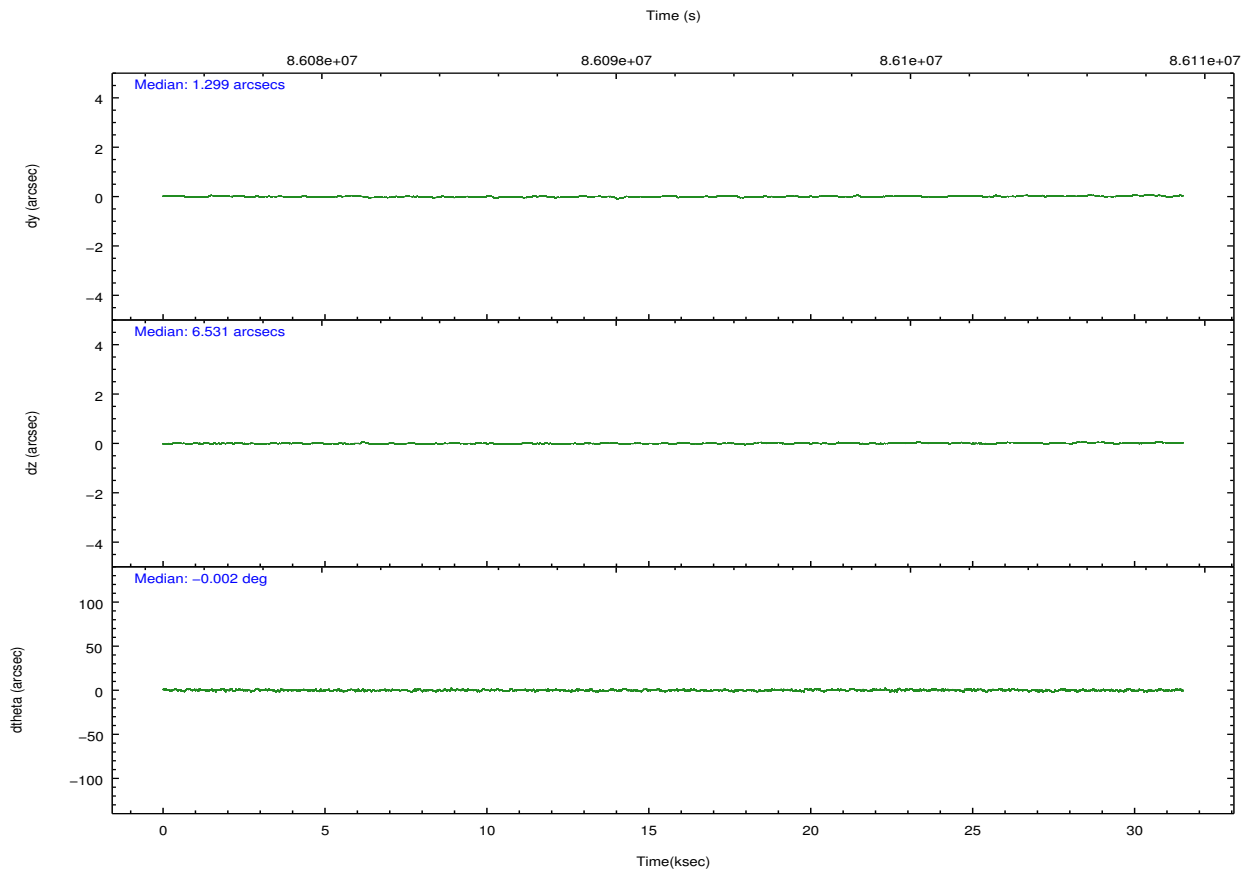
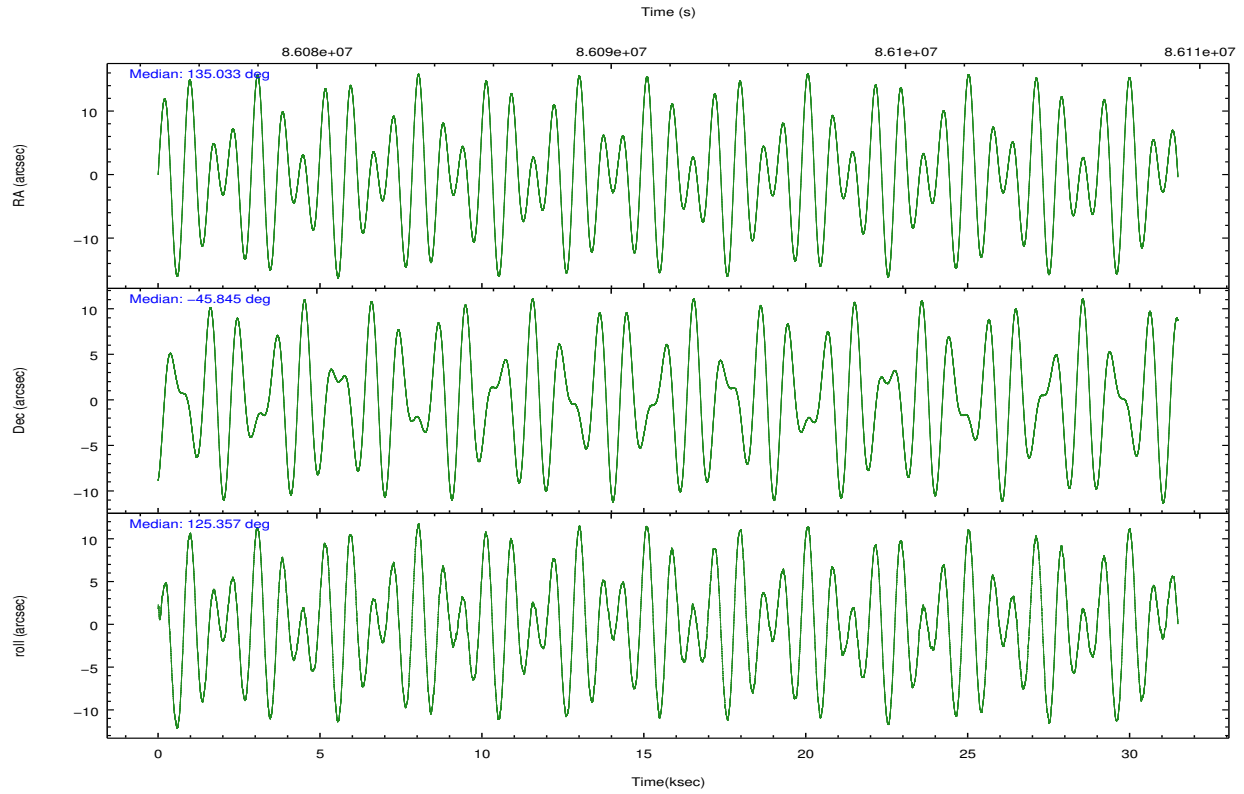
	ccd 0	ccd 1	ccd 2	ccd 3	ccd 5	ccd 7		ccd 0	ccd 1	ccd 2	ccd 3	ccd 5	ccd 7
level 1 events	237548	177809	212926	224375	299024	292229	grade 0 events	66986	20144	37481	53389	34930	33807
rejected events	152696	144065	161165	155544	133677	130306		28%	11%	17%	23%	11%	11%
rejected %	64%	81%	75%	69%	44%	44%	grade 1 events	292	149	159	259	297	240
								0%	0%	0%	0%	0%	0%
							grade 2 events	8250	5047	6181	6879	45522	34107
								3%	2%	2%	3%	15%	11%
							grade 3 events	2906	2335	2277	2474	9016	15189
								1%	1%	1%	1%	3%	5%
							grade 4 events	2878	2326	2256	2458	8644	15595
								1%	1%	1%	1%	2%	5%
							grade 5 events	6530	6468	5924	6523	19201	21833
								2%	3%	2%	2%	6%	7%
							grade 6 events	3852	3897	3574	3648	67277	63267
								1%	2%	1%	1%	22%	21%
							grade 7 events	145854	137443	155074	148745	114137	108191
								61%	77%	72%	66%	38%	37%

## 2.2 Compared Parameters

Parameter	Planned	Actual	Parameter	Planned	Actual
Instrument	ACIS	ACIS	Obspar format version number	7	7
Detector	ACIS-012357	ACIS-012357	Obspar file type	PREDICTED	ACTUAL
Grating	NONE	NONE	Obspar update status	NONE	UPDATED
Data mode	FAINT	FAINT	Number of optional ACIS chips dropped	0	0
Observation mode	POINTING	POINTING	On-chip summing requested	N	N
[deg] Pointing RA	135.068379	135.0325274890288	Subarray requested	NONE	NONE
[deg] Pointing Dec	-45.856778	-45.84522808748245	Alternating exposures requested	N	N
[deg] Pointing Roll	125.180101	125.3630605095702	[s] Primary exposure time	0.000000	3.2
[mm] SIM focus pos	-0.782348	-0.7809083437167272			
[mm] SIM defocus	0	0.001439871863259334			
[mm] SIM translation stage pos	-233.592463	-233.5874344608287			
[mm] SIM translation stage offset	0	-0.005018542100998502			
[s] Observation start time (MET)	86076376.184000	86076000.011344			
Observation start date	2000-09-23T06:05:12	2000-09-23T06:00:00			
[s] Observation end time (MET)	86107676.184000	86108205.000057			
Observation end date	2000-09-23T14:46:52	2000-09-23T14:56:45			
Read mode	TIMED	TIMED			

## 2.3 Aspect



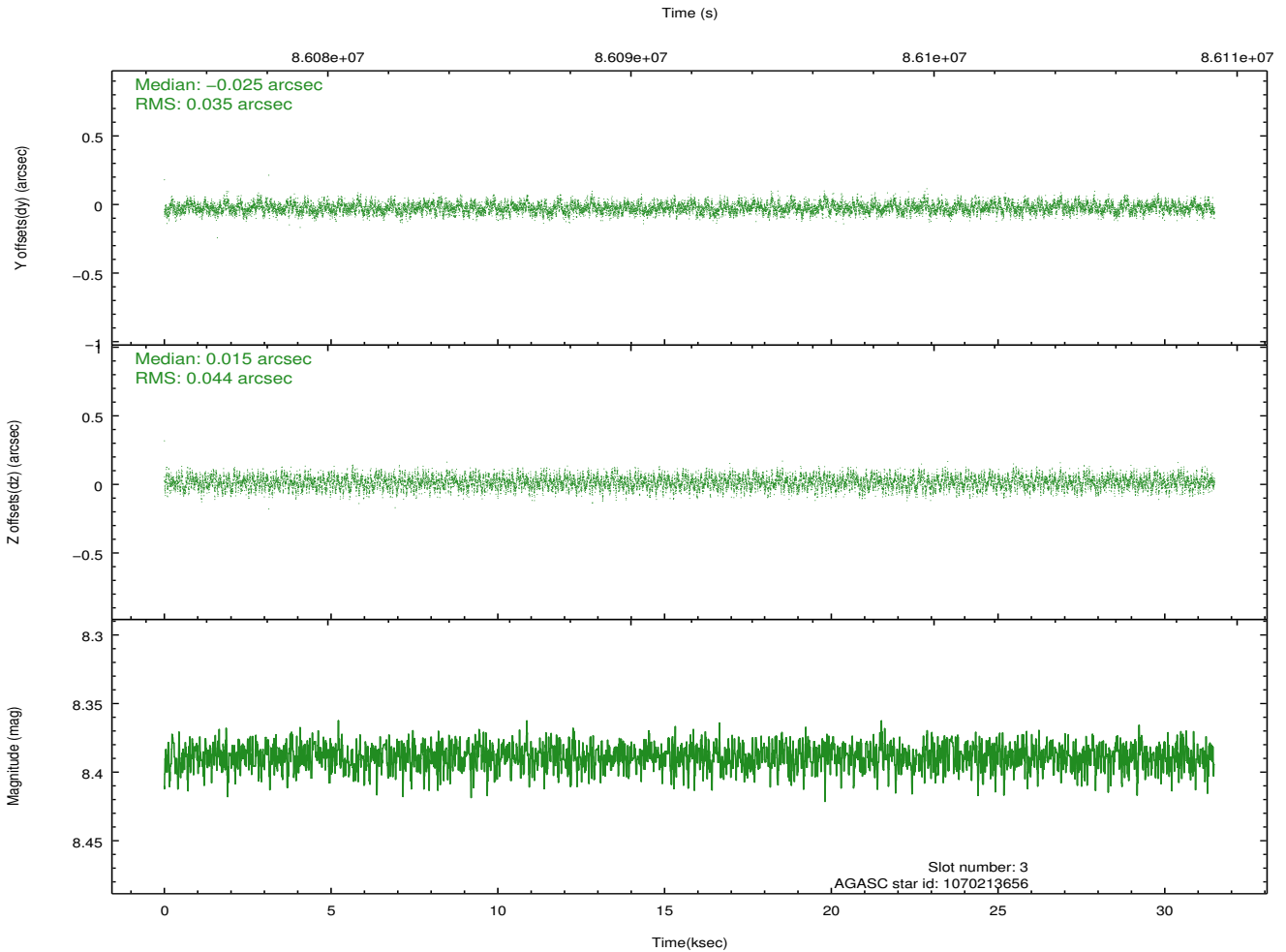
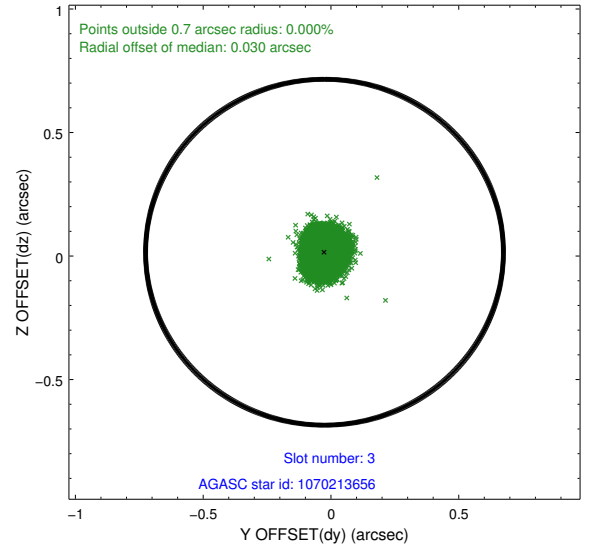
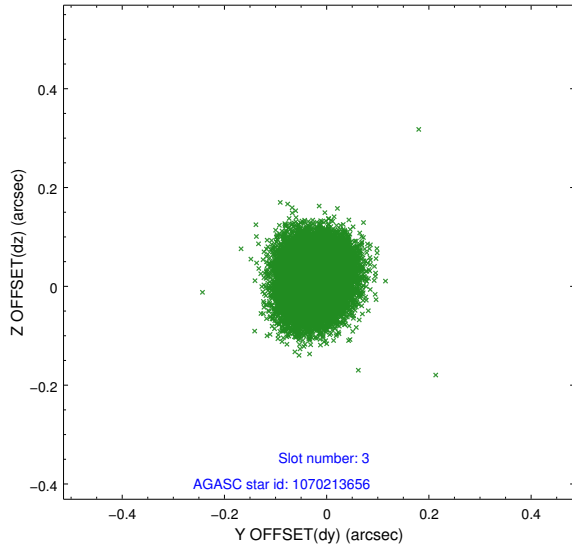


### Slot Statistics

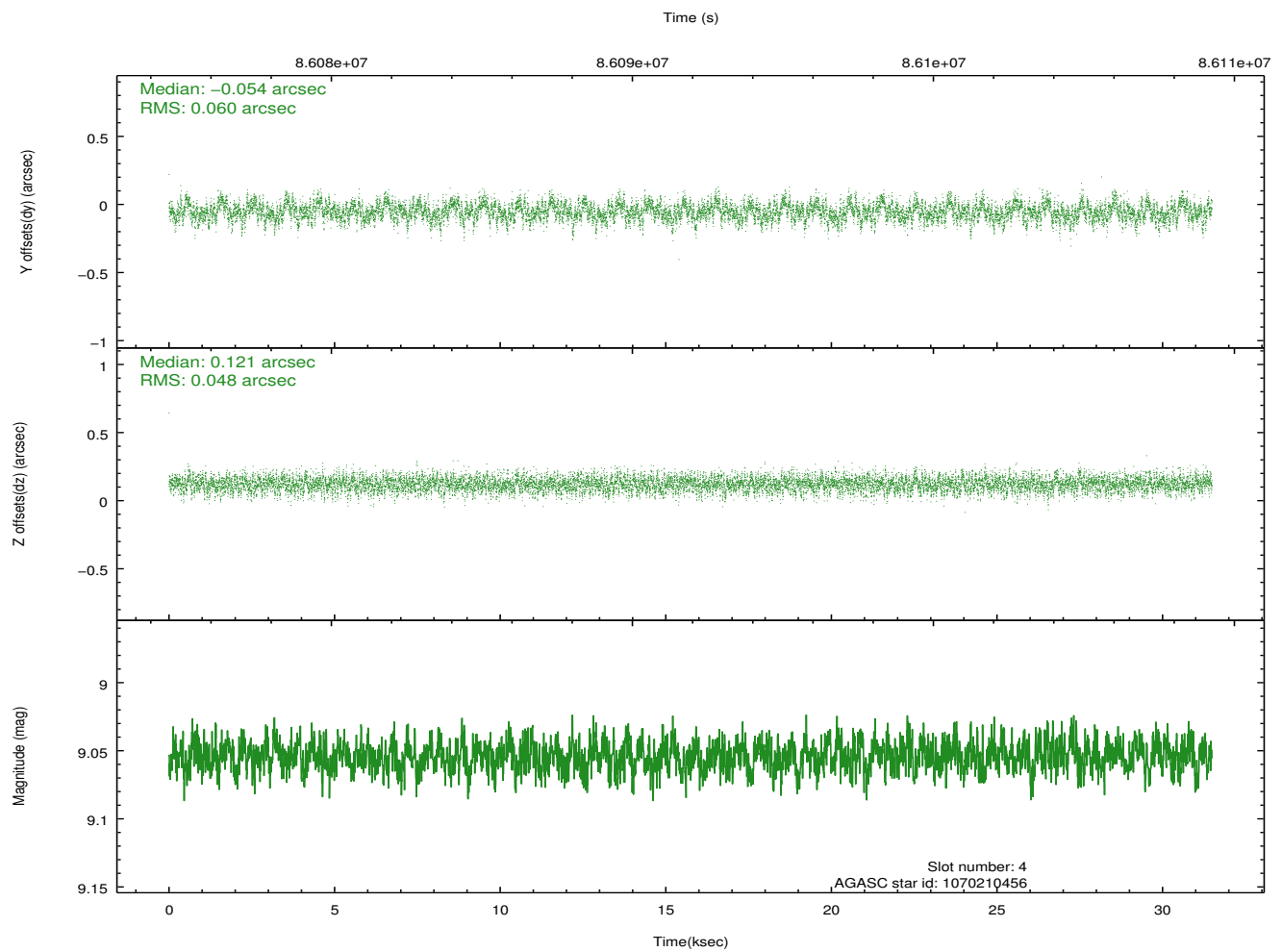
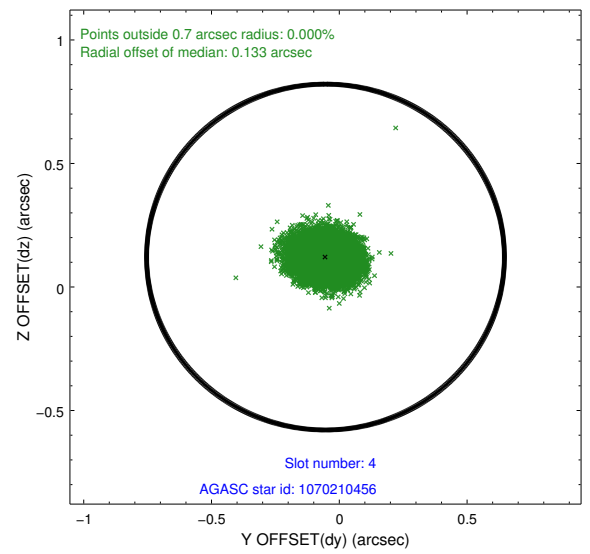
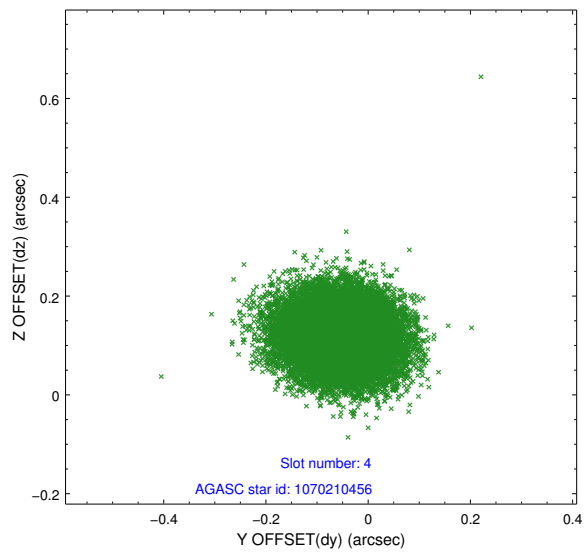
slot	status	id	mag	n_pts	med_dy	med_dz	dr1	dr2	ra	dec	mean_y	mean_z
0	FID	ACIS-I-2	7.15	7681	-0.037	-0.073	0.013	0.020	0.000000	0.000000	-755.67	-836.35
1	FID	ACIS-I-4	7.18	7680	-0.056	0.049	0.010	0.018	0.000000	0.000000	2158.34	1069.92
2	FID	ACIS-I-5	7.22	7681	-0.008	0.093	0.017	0.026	0.000000	0.000000	-1809.39	1067.87
3	GUIDE	1070213656	8.39	15359	-0.025	0.015	0.061	0.096	135.946131	-46.028158	-1777.57	-1430.28
4	GUIDE	1070210456	9.05	15356	-0.054	0.121	0.082	0.132	135.144108	-45.194483	1838.54	-1529.79
5	GUIDE	1068502936	9.45	15352	-0.006	-0.112	0.079	0.130	134.895208	-45.748910	568.22	132.64
6	GUIDE	1068499920	9.51	15357	-0.012	-0.057	0.092	0.149	134.965836	-46.459902	-1627.96	1459.40
7	GUIDE	1068499224	9.03	15356	0.095	0.033	0.083	0.134	133.849709	-45.670998	2294.10	2134.91

## 2.4 Star Slots

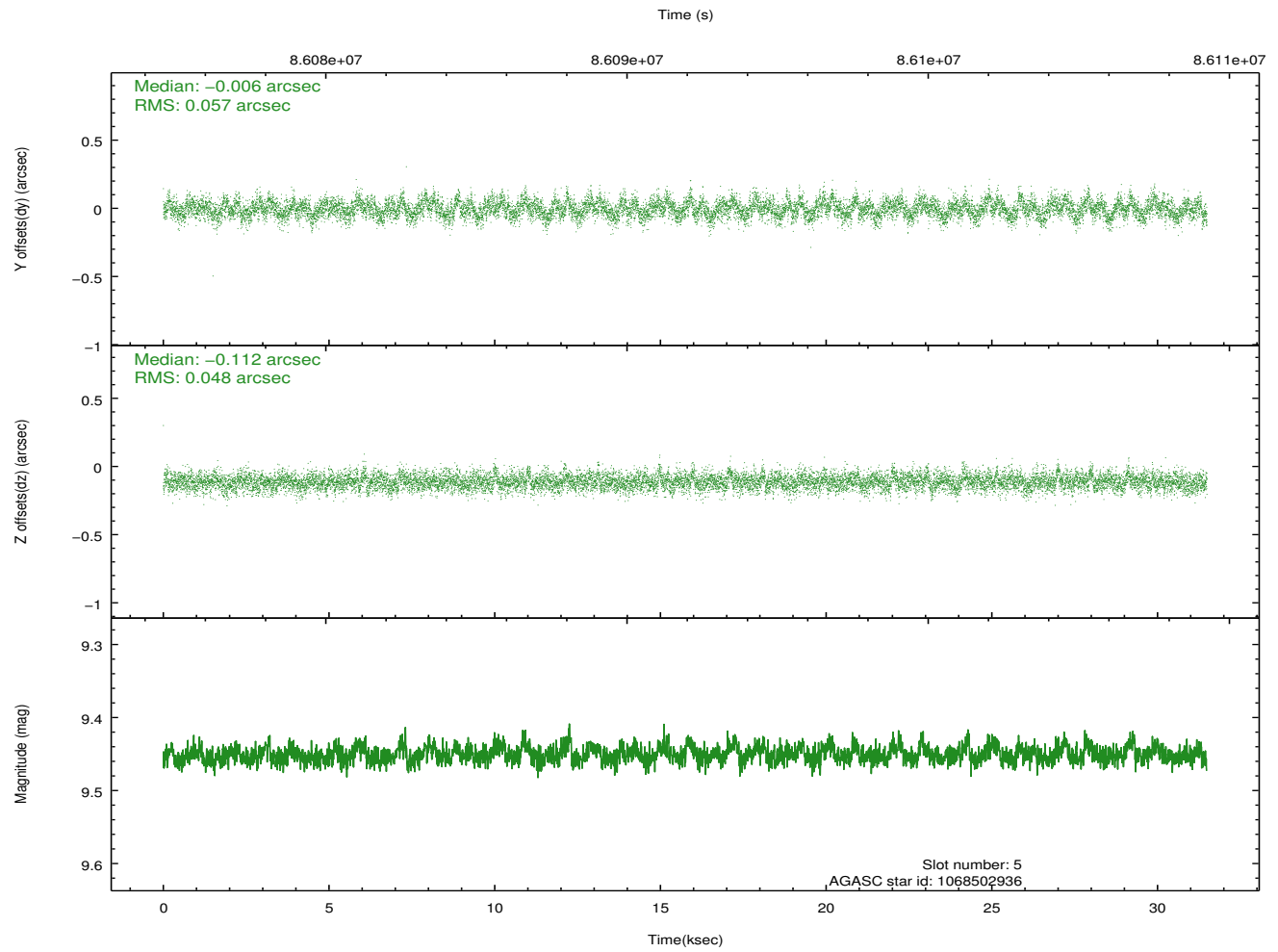
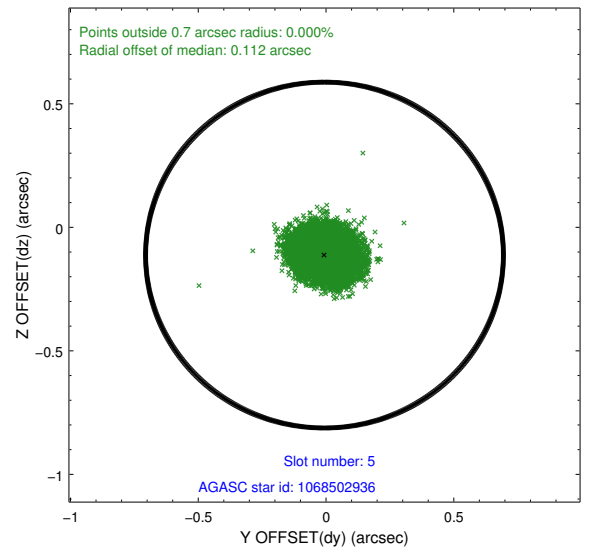
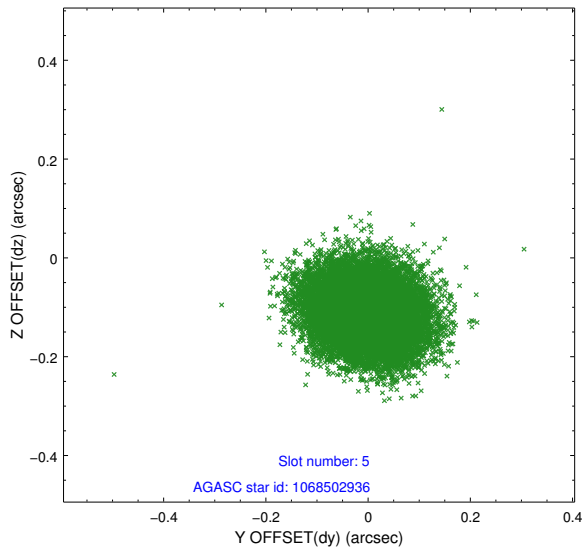
### 2.4.1 Slot 3



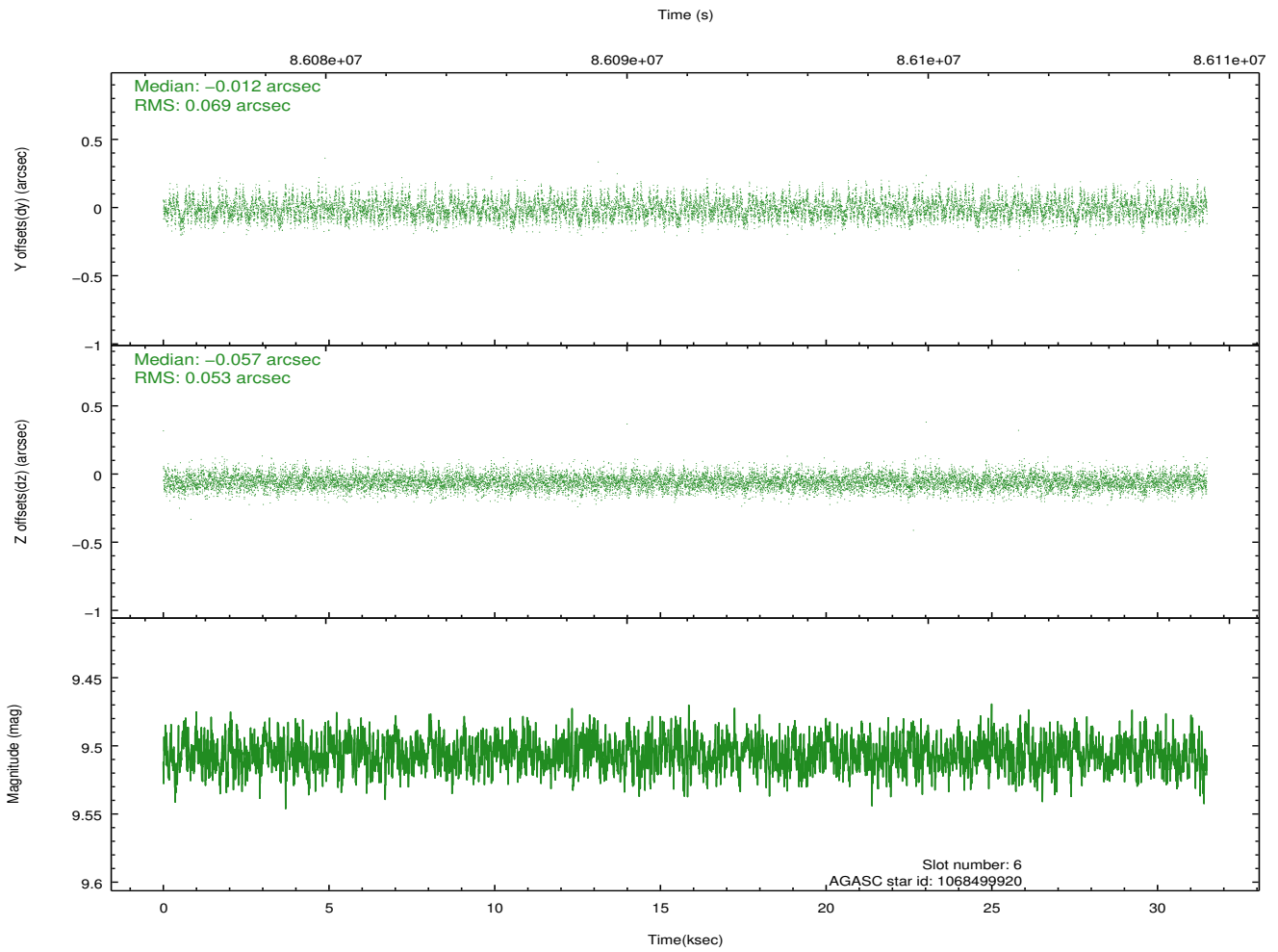
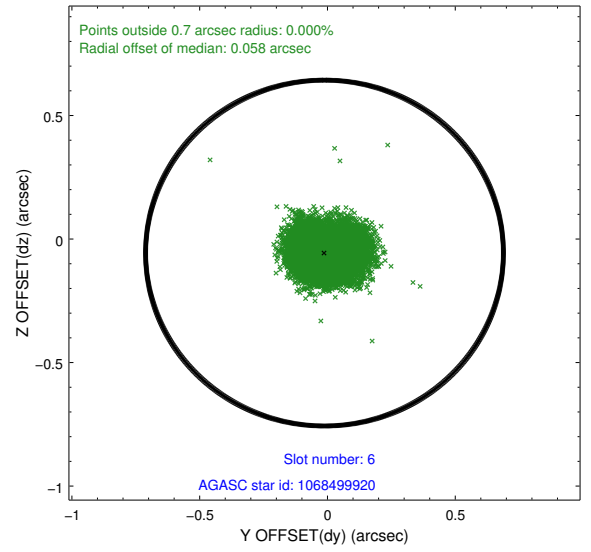
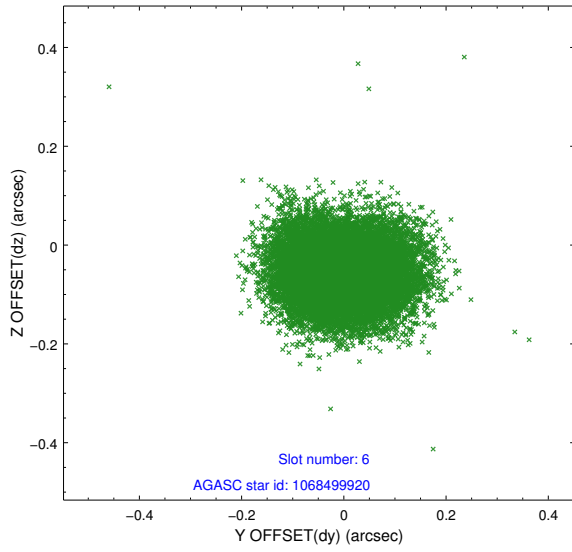
## 2.4.2 Slot 4



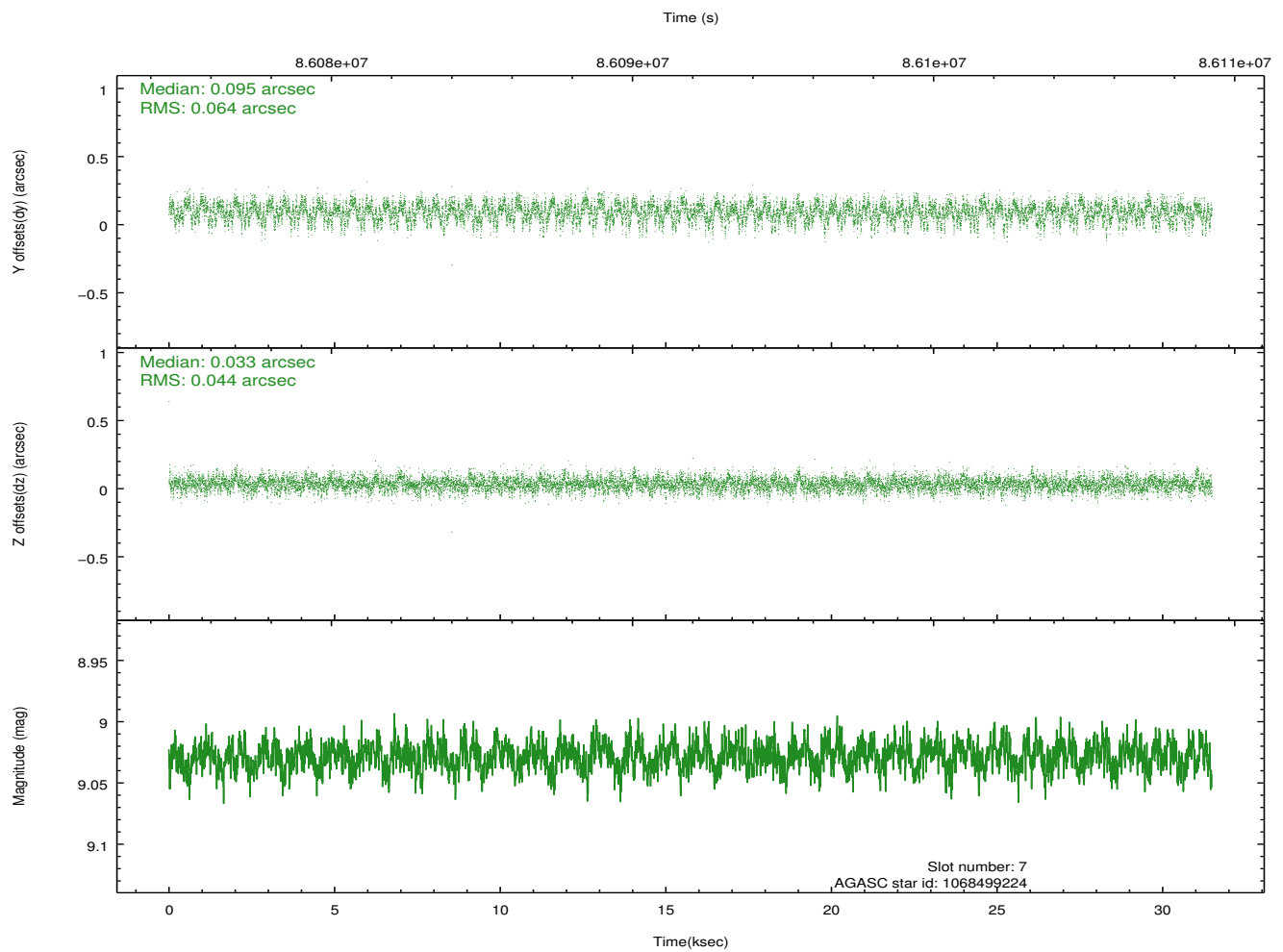
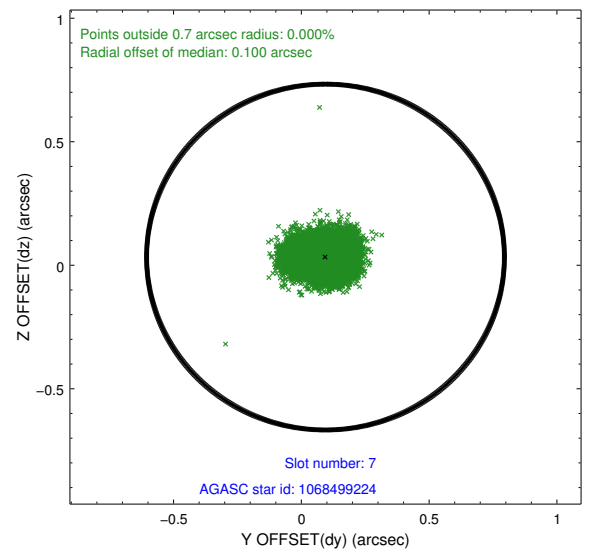
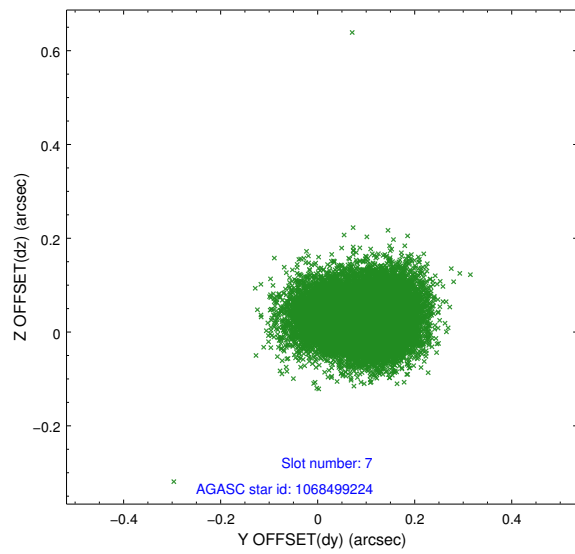
### 2.4.3 Slot 5



## 2.4.4 Slot 6

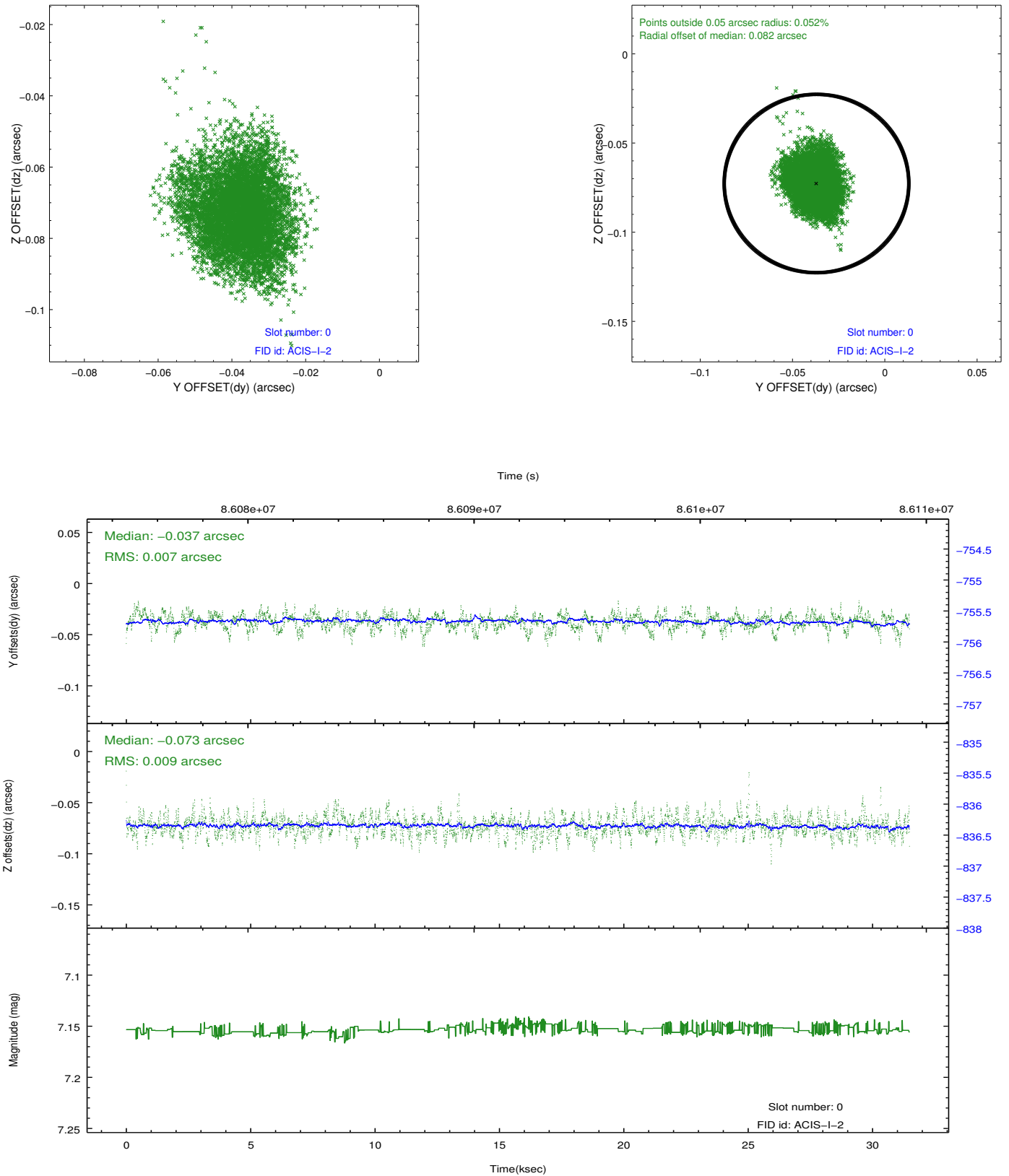


## 2.4.5 Slot 7

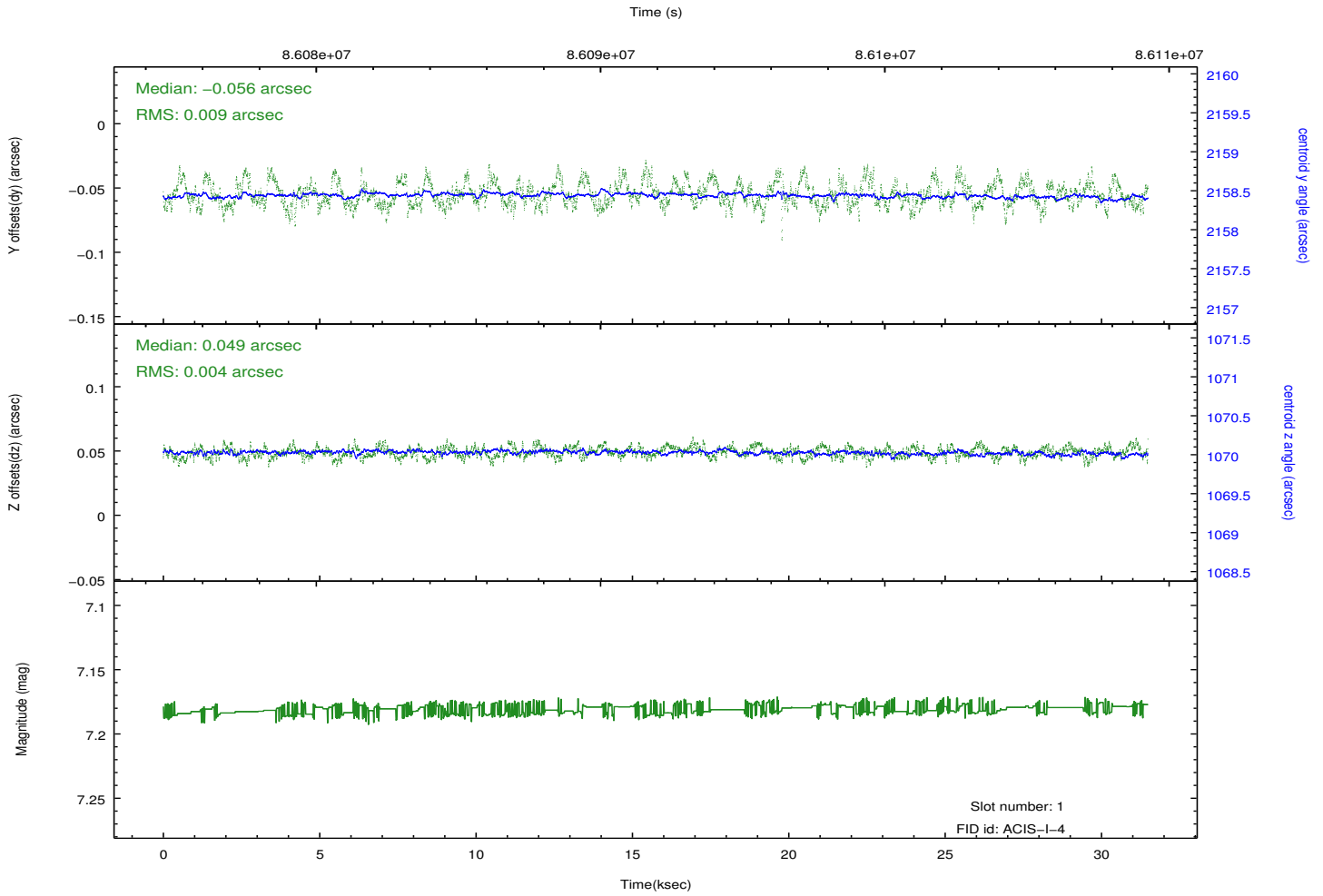
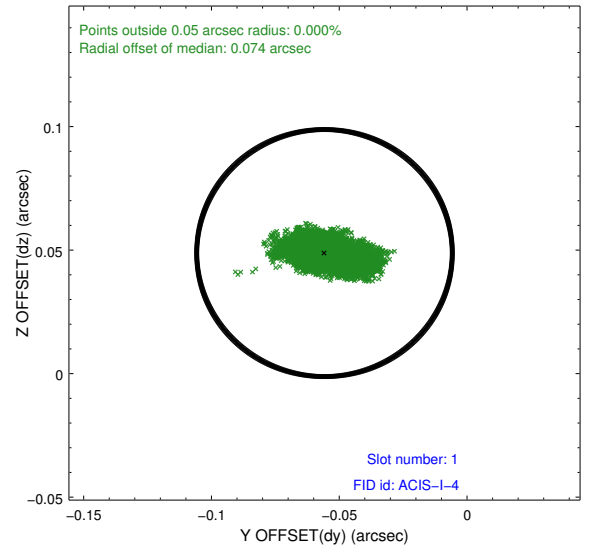
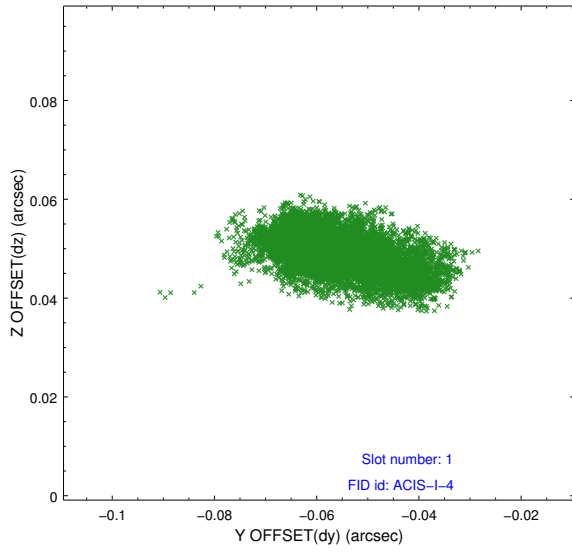


## 2.5 FID Slots

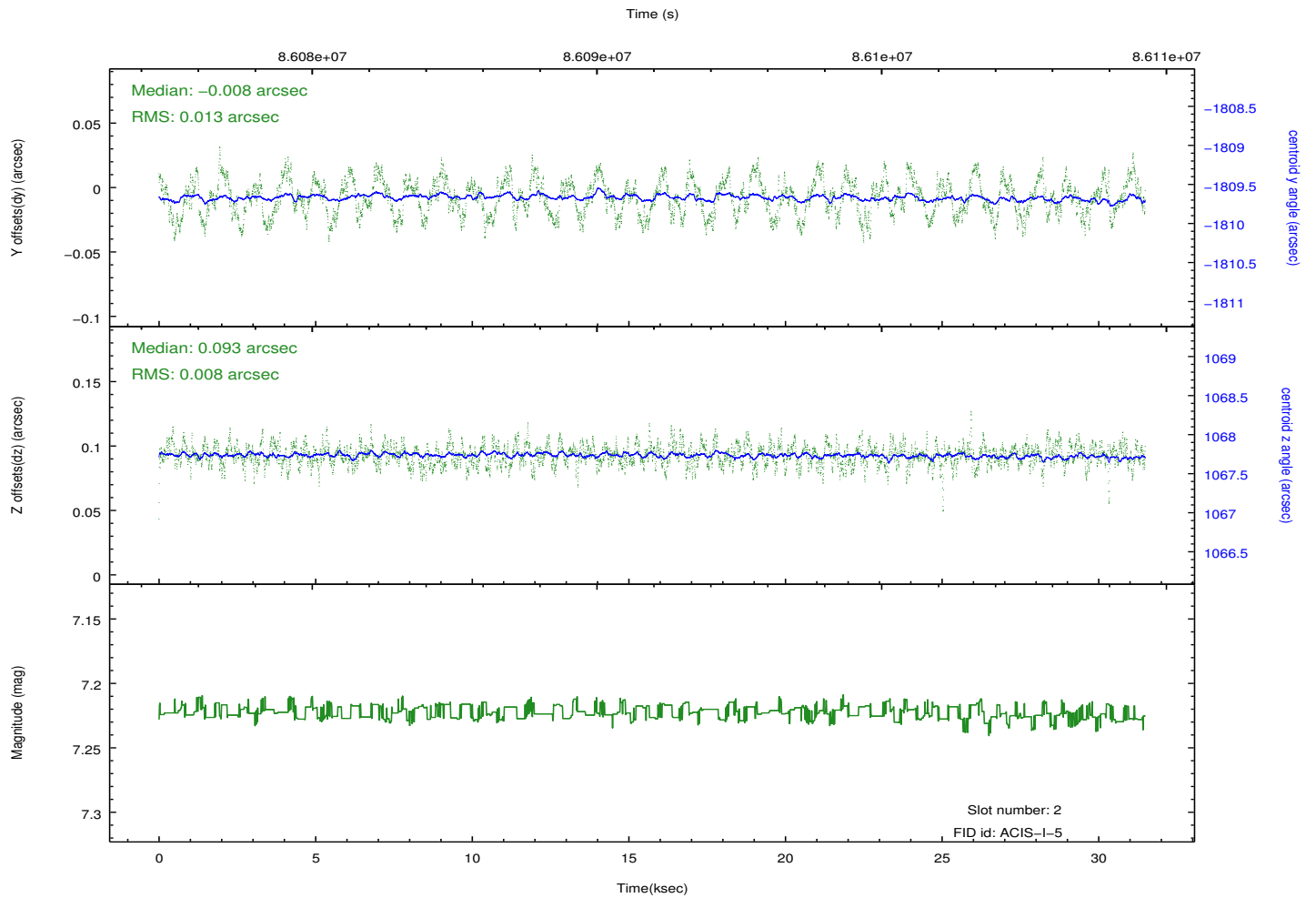
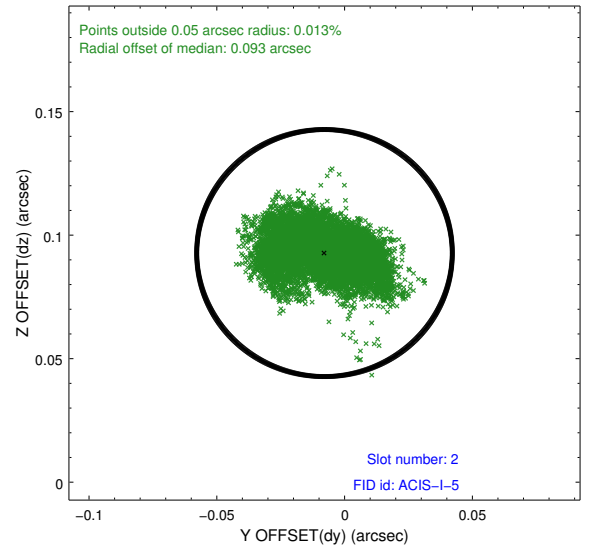
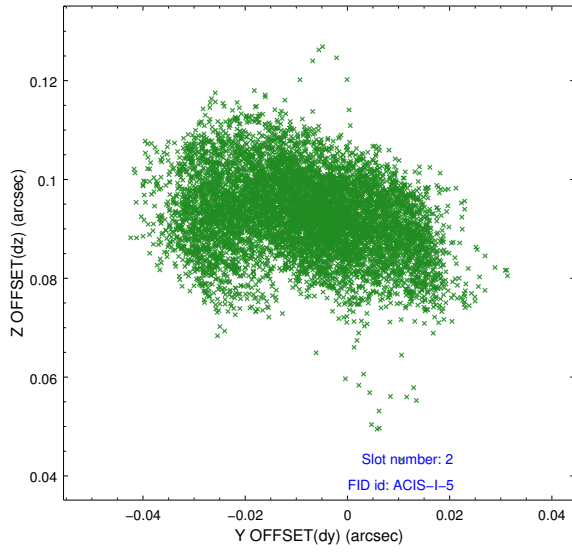
### 2.5.1 Slot 0



## 2.5.2 Slot 1



### 2.5.3 Slot 2



# A Summary

## A.1 Status

V&V Scientist	Beth Sundheim
V&V Date (YYYY-MM-DD)	2012.09.13
V&V Edition	1
V&V Disposition and Status	OK
V&V Charge Time	31.052

## A.2 Comments