

V&V Reference Report

L2 ASCDS Version : 8.4.4

Observation 7904 - L2 Version 2
Chandra X-Ray Center

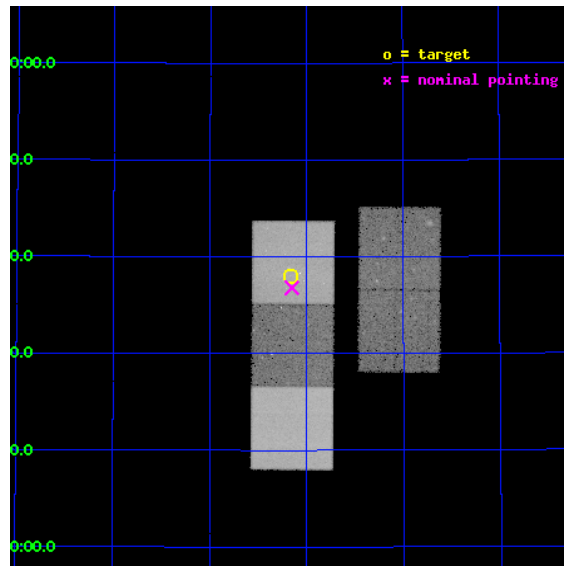
L2 Processing Date : Apr 28 2012

Contents

1	Front	2
2	OBI	3
2.1	OBI	3
2.1.1	Images	3
2.1.2	Bias	3
2.1.3	Parameters	4
2.1.4	Events	4
2.2	Compared Parameters	5
2.3	Aspect	6
2.4	Star Slots	9
2.4.1	Slot 3	9
2.4.2	Slot 4	10
2.4.3	Slot 5	11
2.4.4	Slot 6	12
2.4.5	Slot 7	13
2.5	FID Slots	14
2.5.1	Slot 0	14
2.5.2	Slot 1	15
2.5.3	Slot 2	16
A	Summary	17
A.1	Status	17
A.2	Comments	17

1 Front

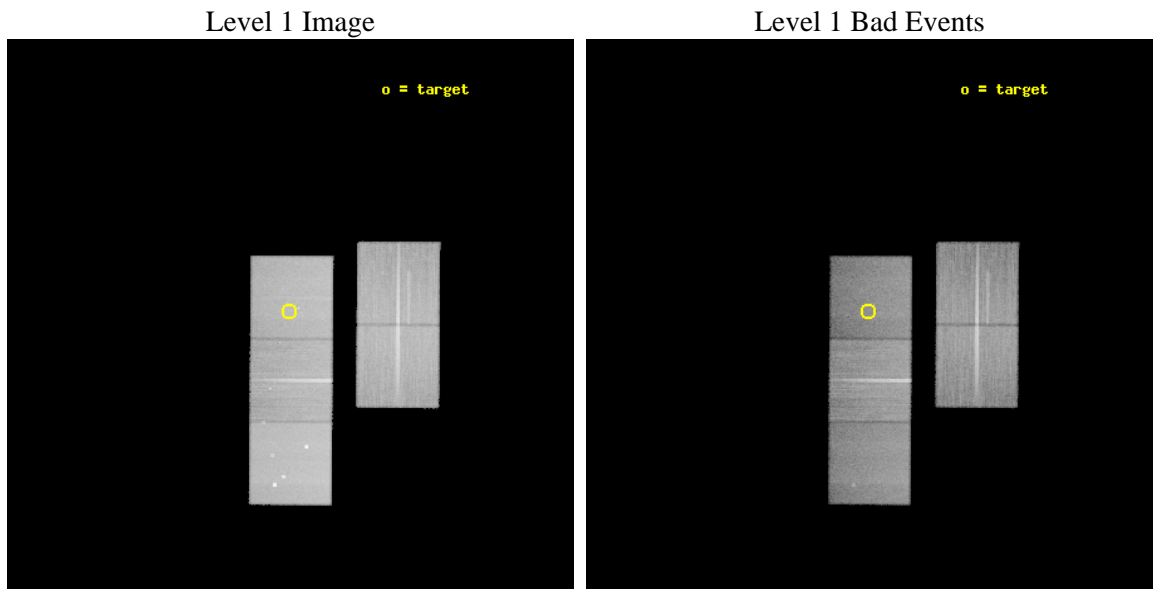
seq_num	800622	Sequence number
obs_id	7904	Observation id
title	Observations of a Distant X-ray Luminous Luminous Cluster of Galaxies	Proposal title
observer	Prof Melville Ulmer	Principal investigator
object	RXJ 1257+4738	Source name
dtcycle	0	
cycle	P	events from which exps? Prim/Second/Both
ra_targ	194.290417	Observer's specified target RA [deg]
dec_targ	47.634028	Observer's specified target Dec [deg]
ra_nom	194.28816932681	Nominal RA [deg]
dec_nom	47.613221266314	Nominal Dec [deg]
roll_nom	270.41620715766	Nominal Roll [deg]
revision	2	Processing version of data
ontime	37531.700288653	Sum of GTIs [s]
livetime	37041.320993946	Livetime [s]
ontime2	37528.559328258	Sum of GTIs [s]
ontime3	37522.277387619	Sum of GTIs [s]
ontime5	37531.700288653	Sum of GTIs [s]
ontime6	37528.559328377	Sum of GTIs [s]
ontime7	37531.700288653	Sum of GTIs [s]
l2events	422612	Number of level 2 events



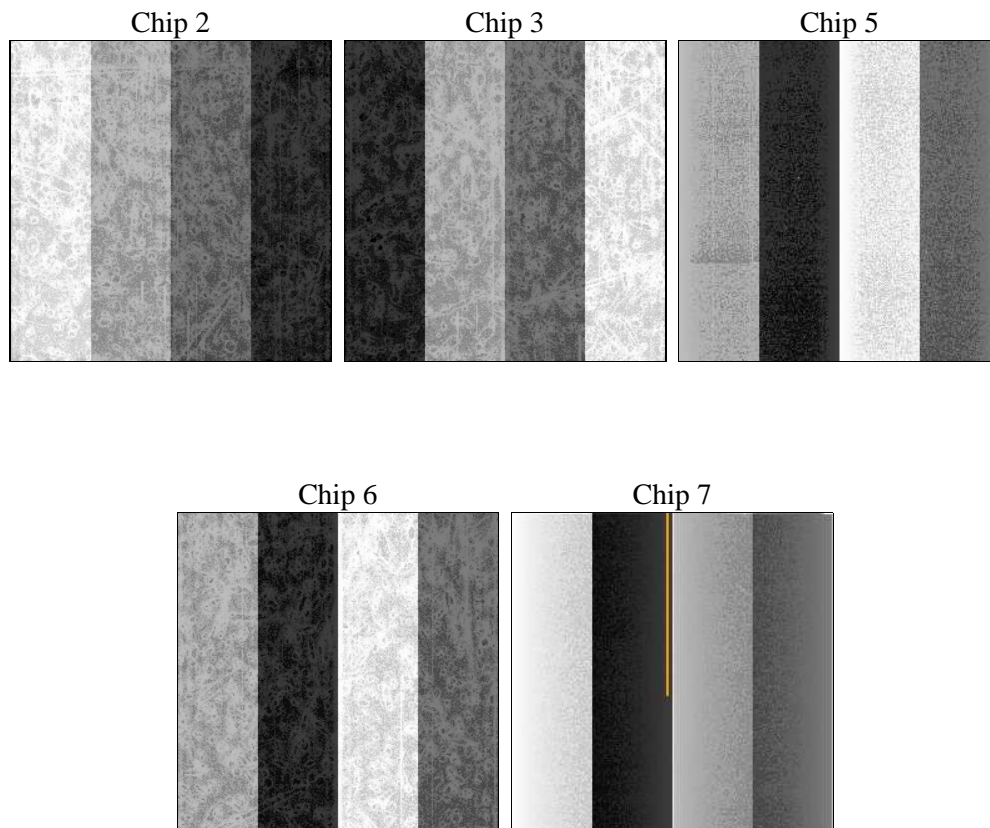
2 OBI

2.1 OBI

2.1.1 Images



2.1.2 Bias



2.1.3 Parameters

obi_num	0	Obi number	sched_exp_time	37500.000000	[s] Scheduled observation exposure time
ascdsver	8.4.4	Processing system revision	ontime	37531.700288653	Sum of GTIs [s]
caldsver	4.4.9	 	ontime2	37528.559328258	Sum of GTIs [s]
date	2012-04-28T15:10:38	Date and time of file creation	ontime3	37522.277387619	Sum of GTIs [s]
revision	2	Processing version of data	ontime5	37531.700288653	Sum of GTIs [s]
			ontime6	37528.559328377	Sum of GTIs [s]
			ontime7	37531.700288653	Sum of GTIs [s]
			l1events	1685609	Number of level 1 events

2.1.4 Events

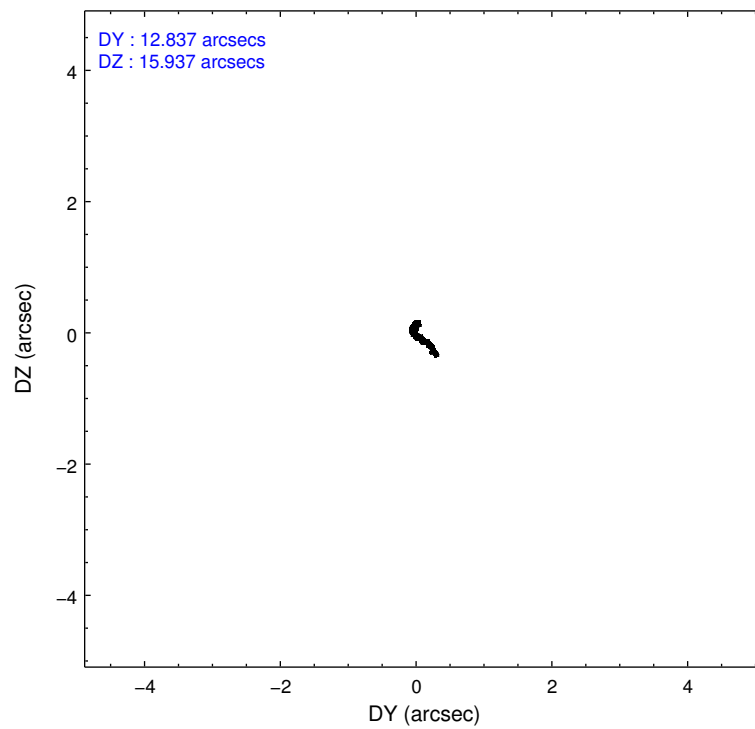
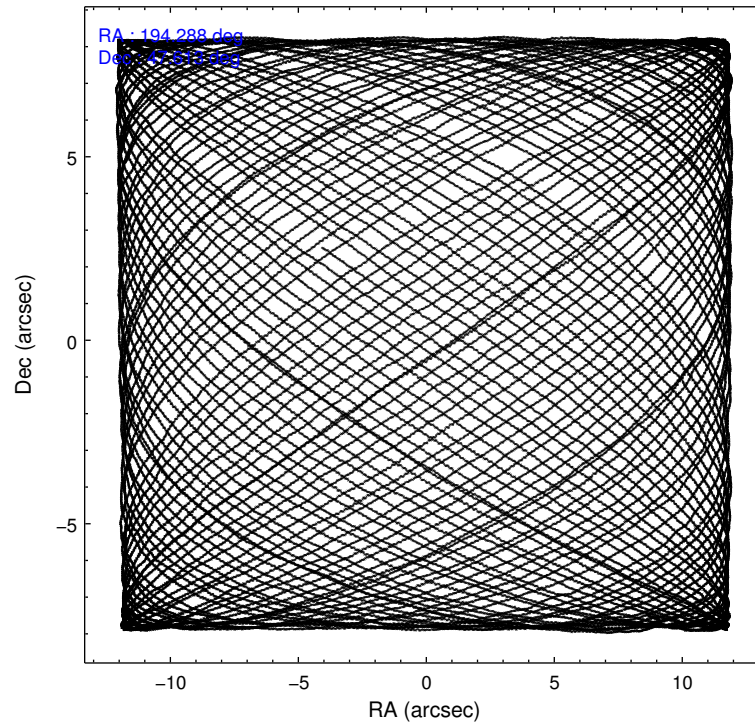
	ccd 2	ccd 3	ccd 5	ccd 6	ccd 7
level 1 events	314720	297030	422306	312274	339279
rejected events	285464	268596	210245	280745	184153
rejected %	90%	90%	49%	89%	54%

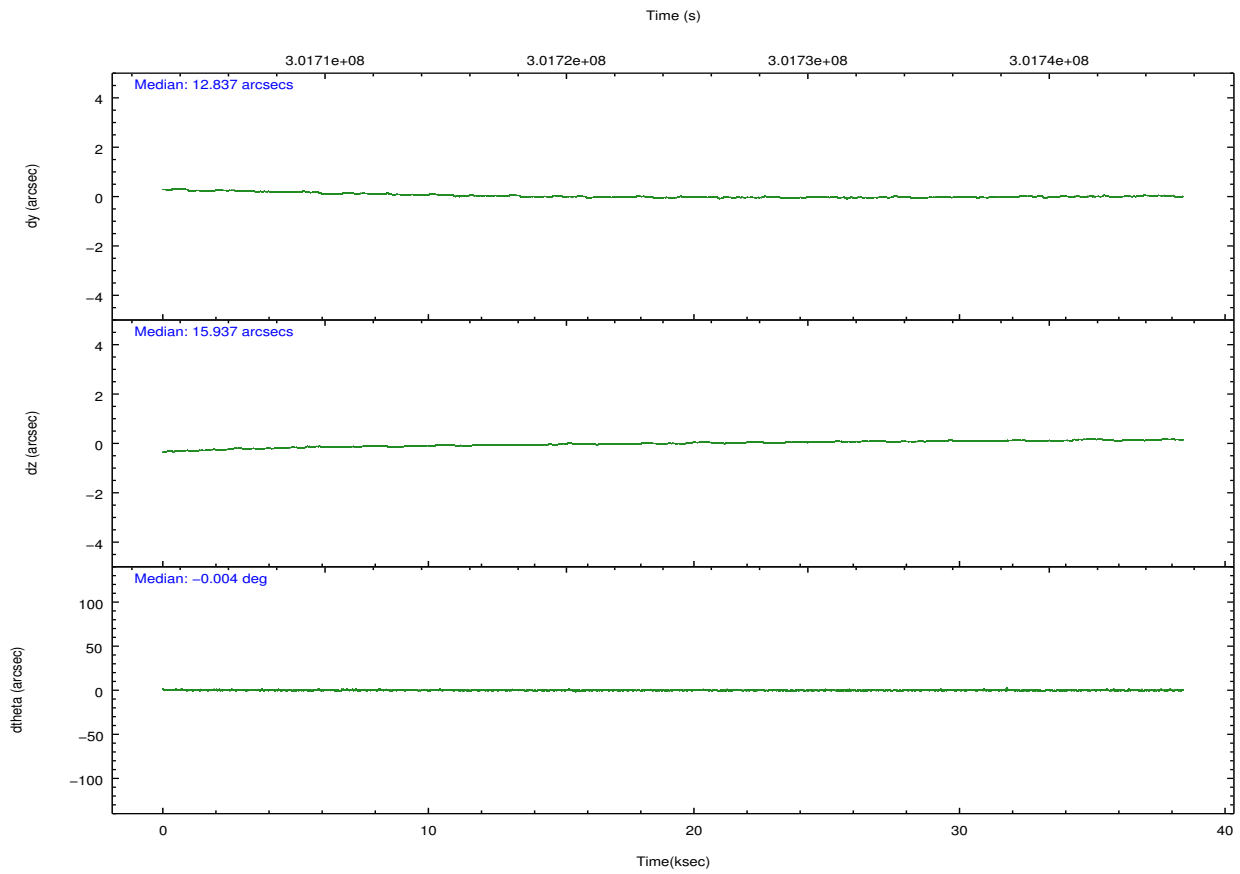
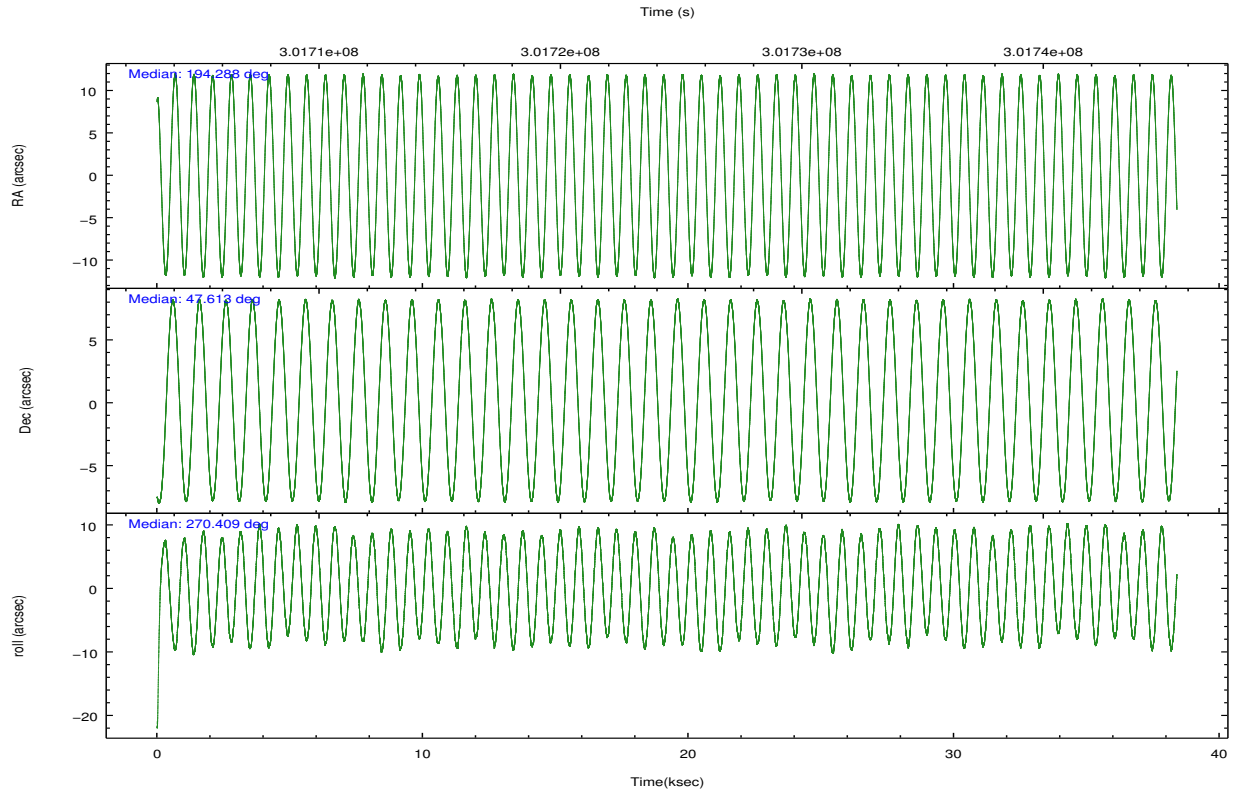
	ccd 2	ccd 3	ccd 5	ccd 6	ccd 7
grade 0 events	10368	10192	24685	11302	14752
	3%	3%	5%	3%	4%
grade 1 events	163	158	961	157	403
	0%	0%	0%	0%	0%
grade 2 events	6977	6109	61354	6876	31584
	2%	2%	14%	2%	9%
grade 3 events	3159	3241	9284	3319	14331
	1%	1%	2%	1%	4%
grade 4 events	3283	3188	8967	3432	14558
	1%	1%	2%	1%	4%
grade 5 events	9465	11901	34291	12303	35874
	3%	4%	8%	3%	10%
grade 6 events	5472	5708	107809	6608	79934
	1%	1%	25%	2%	23%
grade 7 events	275833	256533	174955	268277	147843
	87%	86%	41%	85%	43%

2.2 Compared Parameters

Parameter	Planned	Actual	Parameter	Planned	Actual
Instrument	ACIS	ACIS	Obspar format version number	7	7
Detector	ACIS-23567	ACIS-23567	Obspar file type	PREDICTED	ACTUAL
Grating	NONE	NONE	Obspar update status	NONE	UPDATED
Data mode	VFAINT	VFAINT	CCD I0 on	N	N
Observation mode	POINTING	POINTING	CCD I1 on	N	N
[deg] Pointing RA	194.267147	194.288169326806	CCD I2 on	O1	Y
[deg] Pointing Dec	47.636611	47.6132212663137	CCD I3 on	O2	Y
[deg] Pointing Roll	270.275115	270.4162071576641	CCD S0 on	N	N
[mm] SIM focus pos	-0.684267	-0.6828225247311905	CCD S1 on	Y	Y
[mm] SIM defocus	0	0.001444936568705701	CCD S2 on	Y	Y
[mm] SIM translation stage pos	-190.132523	-190.1400660498719	CCD S3 on	Y	Y
[mm] SIM translation stage offset	0	0.00754346686406393	CCD S4 on	N	N
[s] Observation start time (MET)	301706129.184000	301704843.73646	CCD S5 on	N	N
Observation start date	2007-07-24T23:14:24	2007-07-24T22:54:03	Number of optional ACIS chips dropped	0	0
[s] Observation end time (MET)	301743629.184000	301744560.95086	On-chip summing requested	N	N
Observation end date	2007-07-25T09:39:24	2007-07-25T09:56:00	Subarray requested	NONE	NONE
Read mode	TIMED	TIMED	Alternating exposures requested	N	N
			[s] Primary exposure time	0.000000	3.1

2.3 Aspect



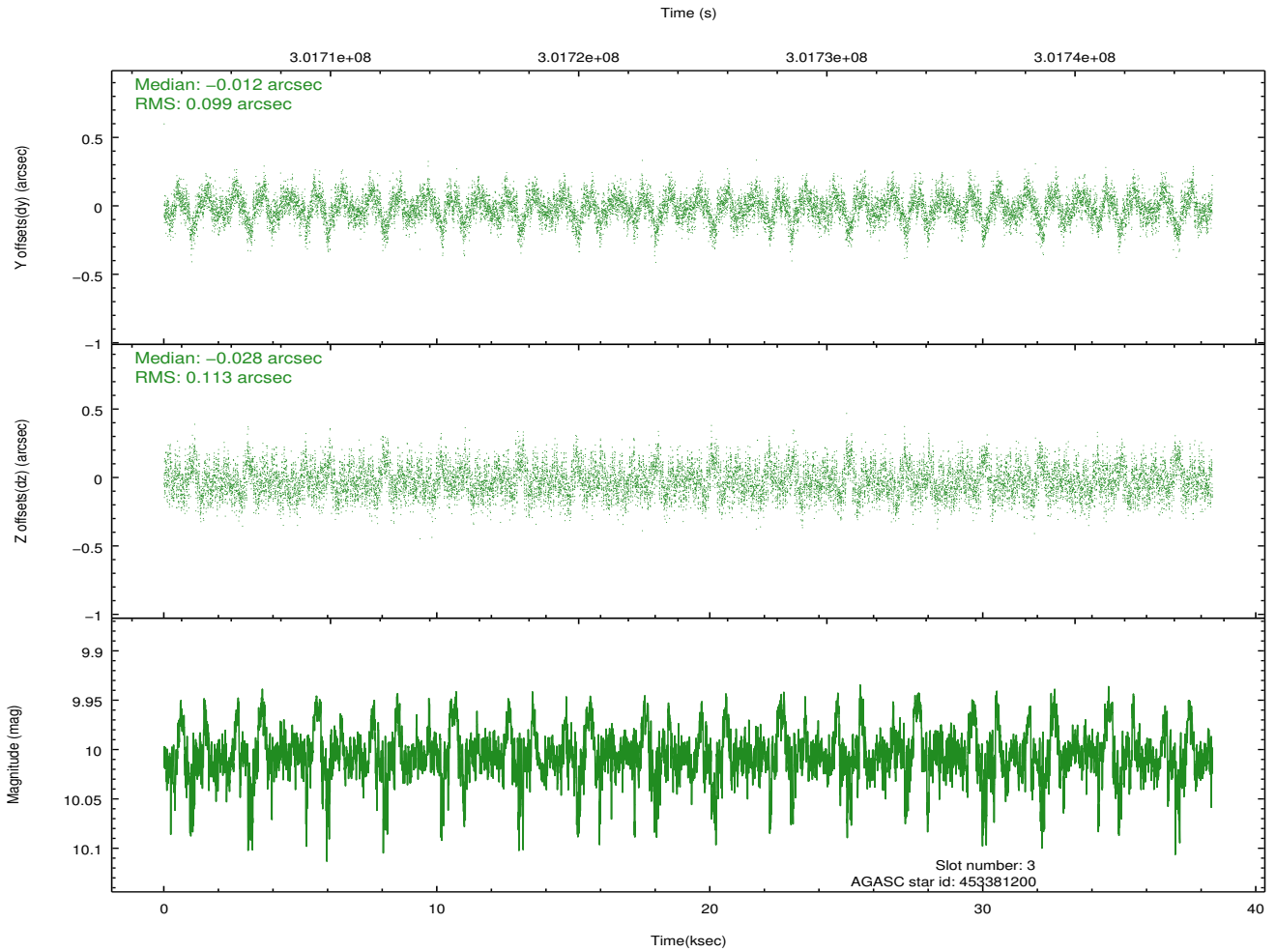
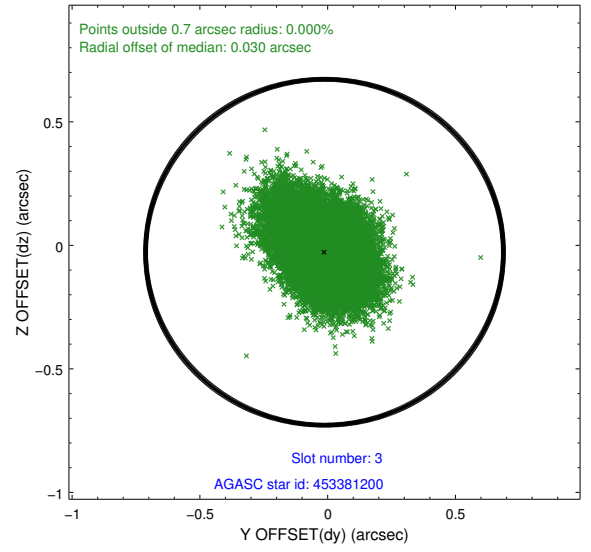
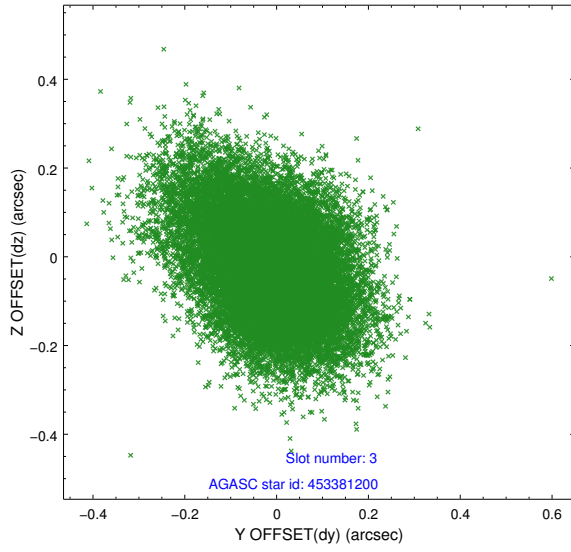


Slot Statistics

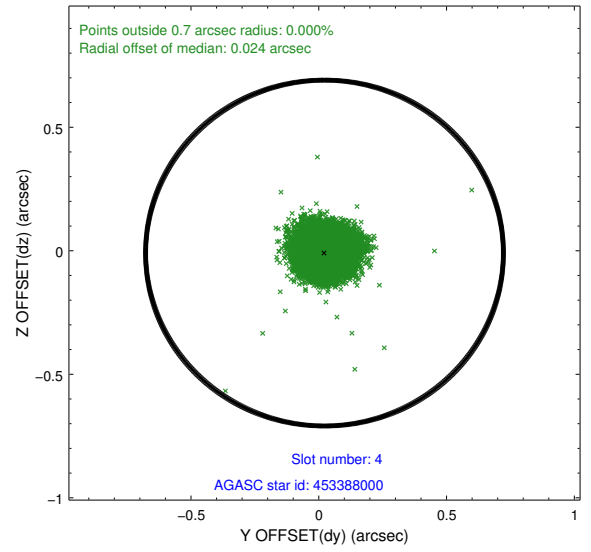
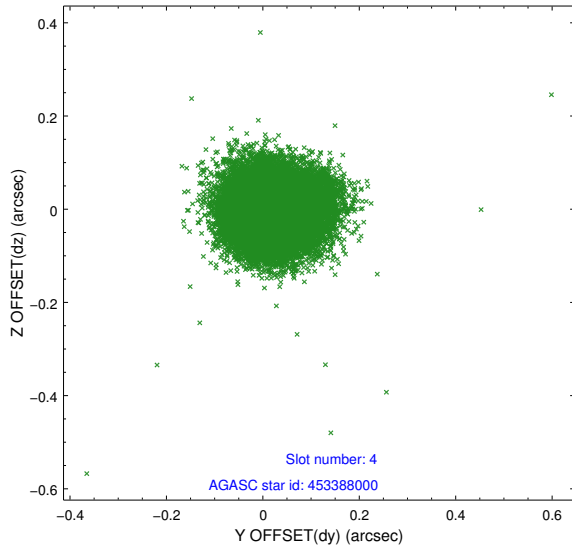
slot	status	id	mag	n_pts	med_dy	med_dz	dr1	dr2	ra	dec	mean_y	mean_z
0	FID	ACIS-S-2	7.09	9366	-0.076	-0.056	0.010	0.022	0.000000	0.000000	-765.87	-1737.38
1	FID	ACIS-S-4	7.19	9366	0.109	0.024	0.010	0.018	0.000000	0.000000	2147.59	171.15
2	FID	ACIS-S-6	7.32	9366	-0.059	0.040	0.007	0.012	0.000000	0.000000	396.17	808.59
3	GUIDE	453381200	10.01	18699	-0.012	-0.028	0.158	0.263	193.283287	47.486264	514.96	-2396.00
4	GUIDE	453388000	8.78	18724	0.022	-0.009	0.075	0.121	194.531383	48.234479	-2150.02	643.82
5	GUIDE	453391088	9.06	18716	-0.032	0.034	0.086	0.135	195.010364	47.442328	699.43	1806.64
6	GUIDE	453391488	9.52	18648	0.022	-0.028	0.109	0.173	194.670606	47.441980	703.44	979.71
7	GUIDE	453379032	9.06	18718	0.004	0.030	0.106	0.170	193.249856	47.658895	-108.13	-2466.40

2.4 Star Slots

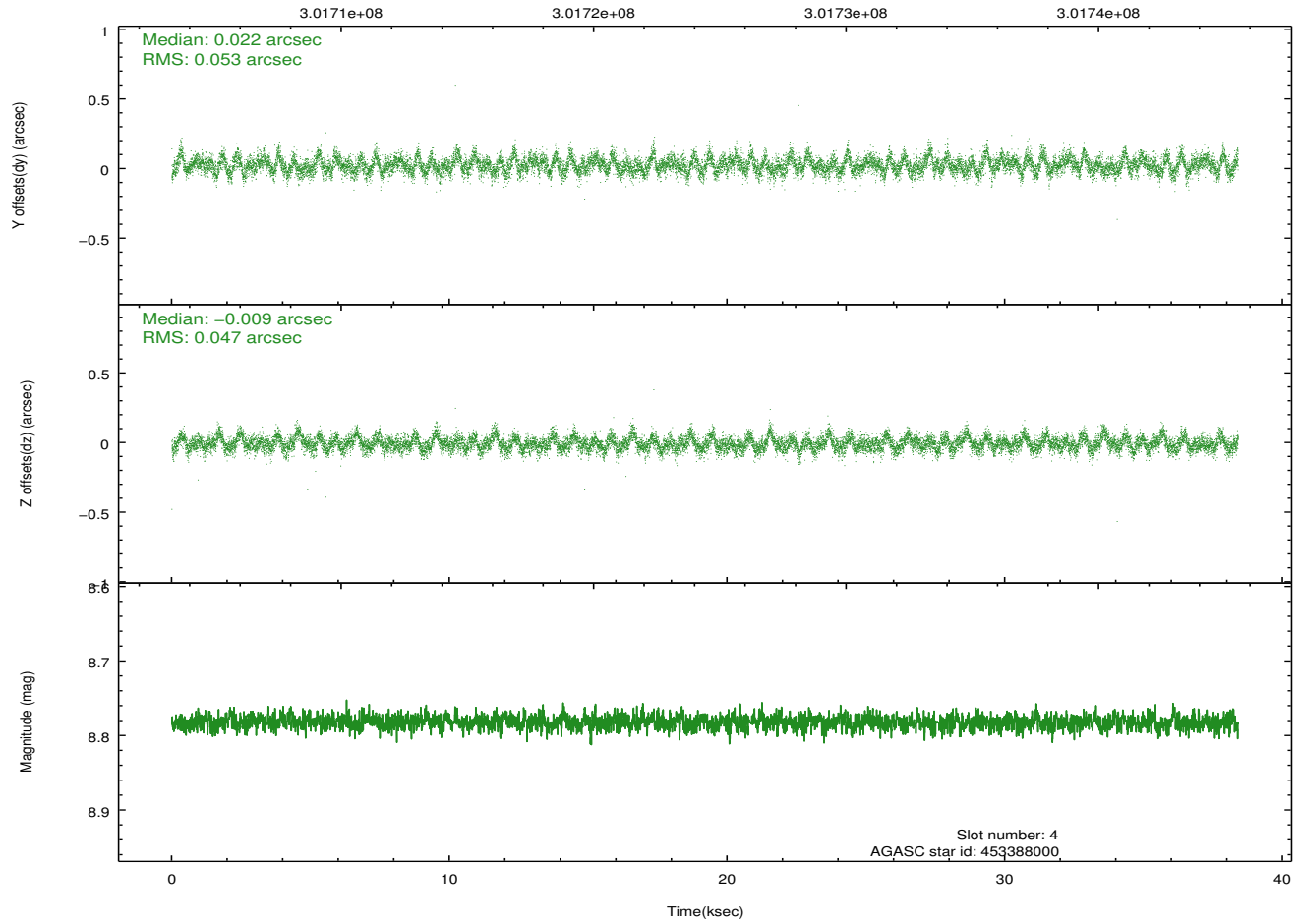
2.4.1 Slot 3



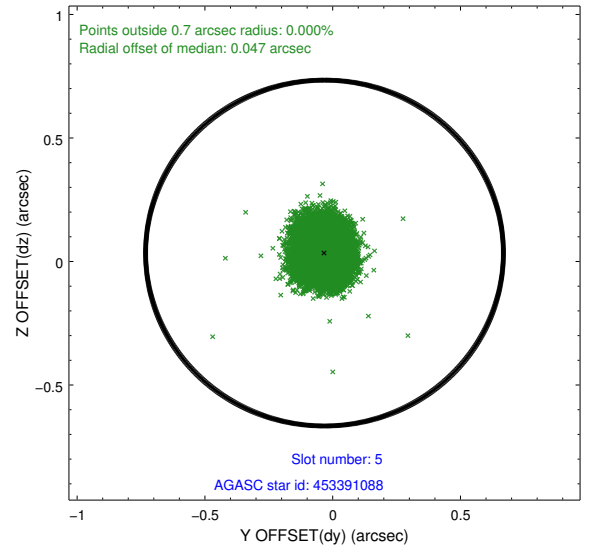
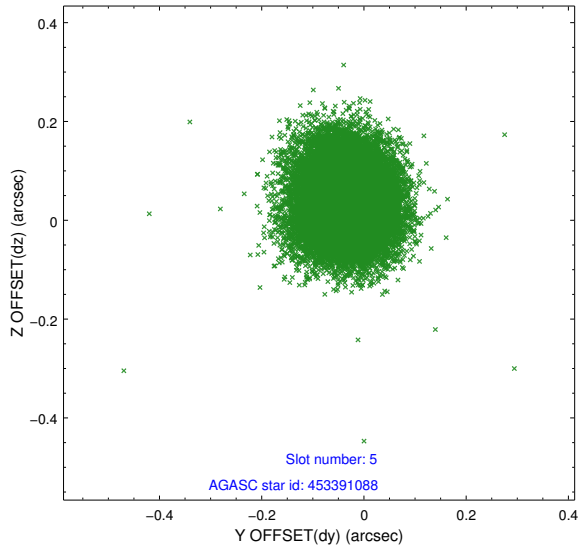
2.4.2 Slot 4



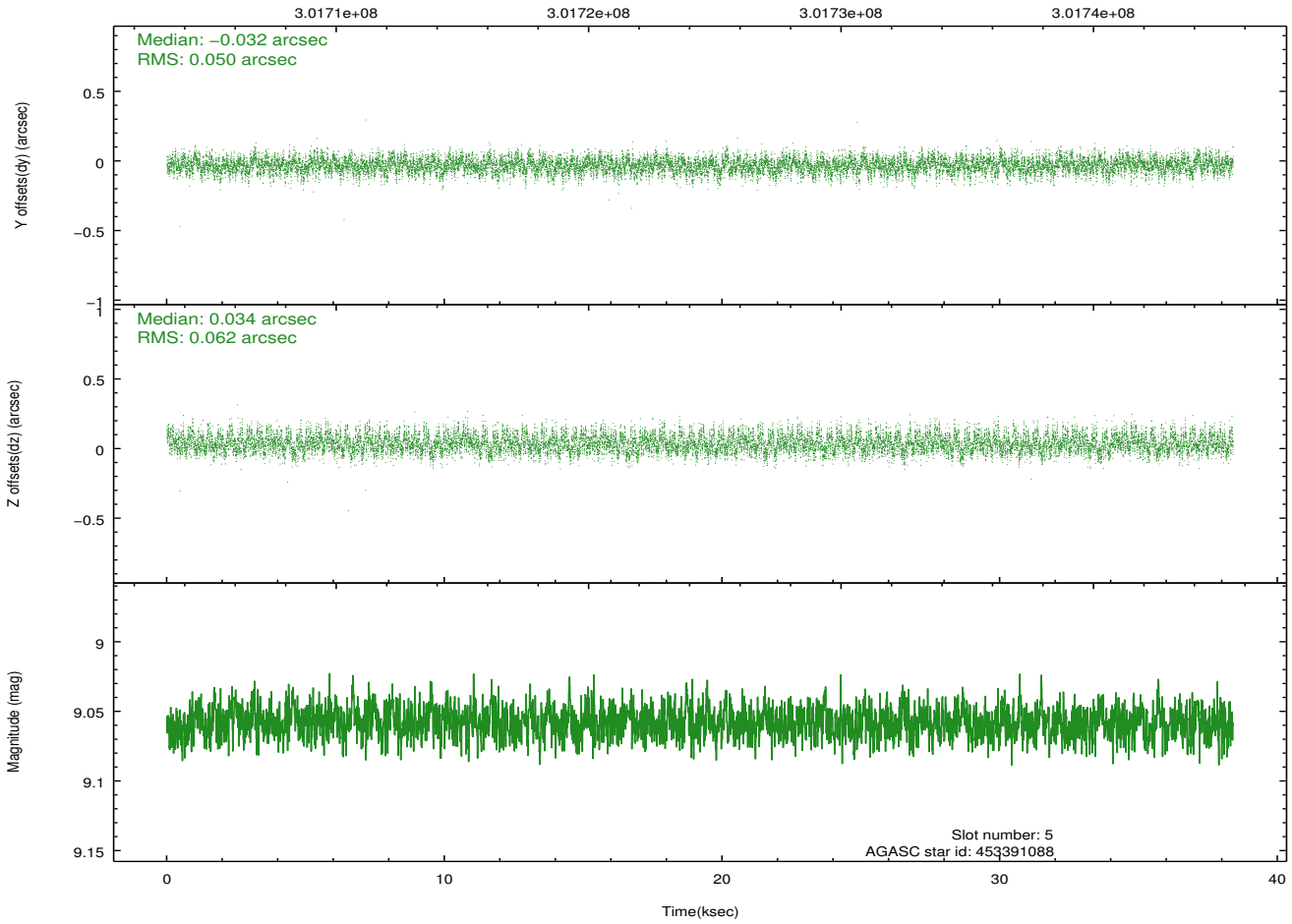
Time (s)



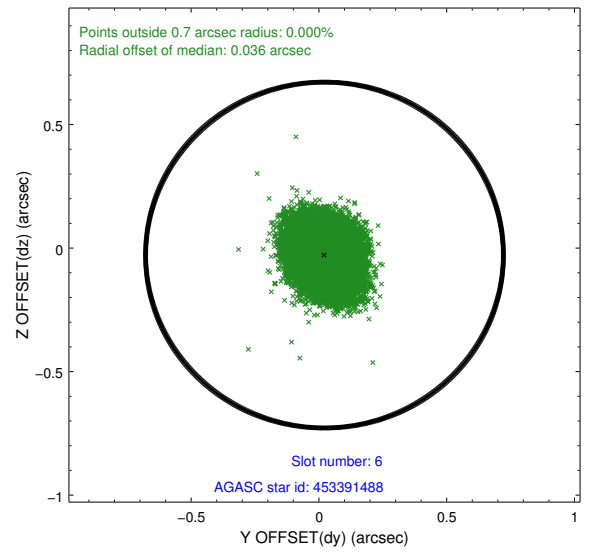
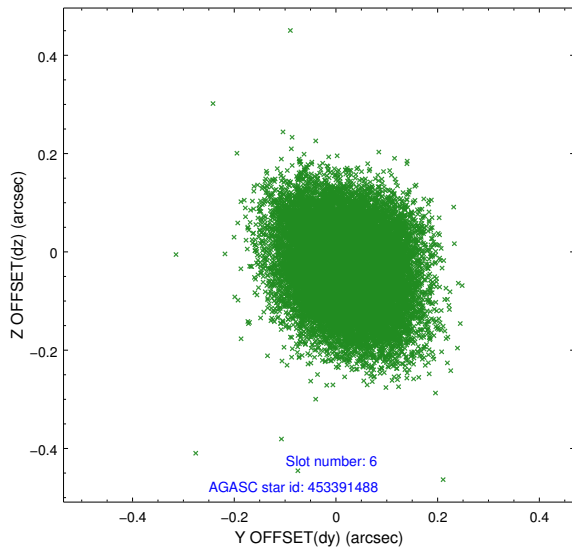
2.4.3 Slot 5



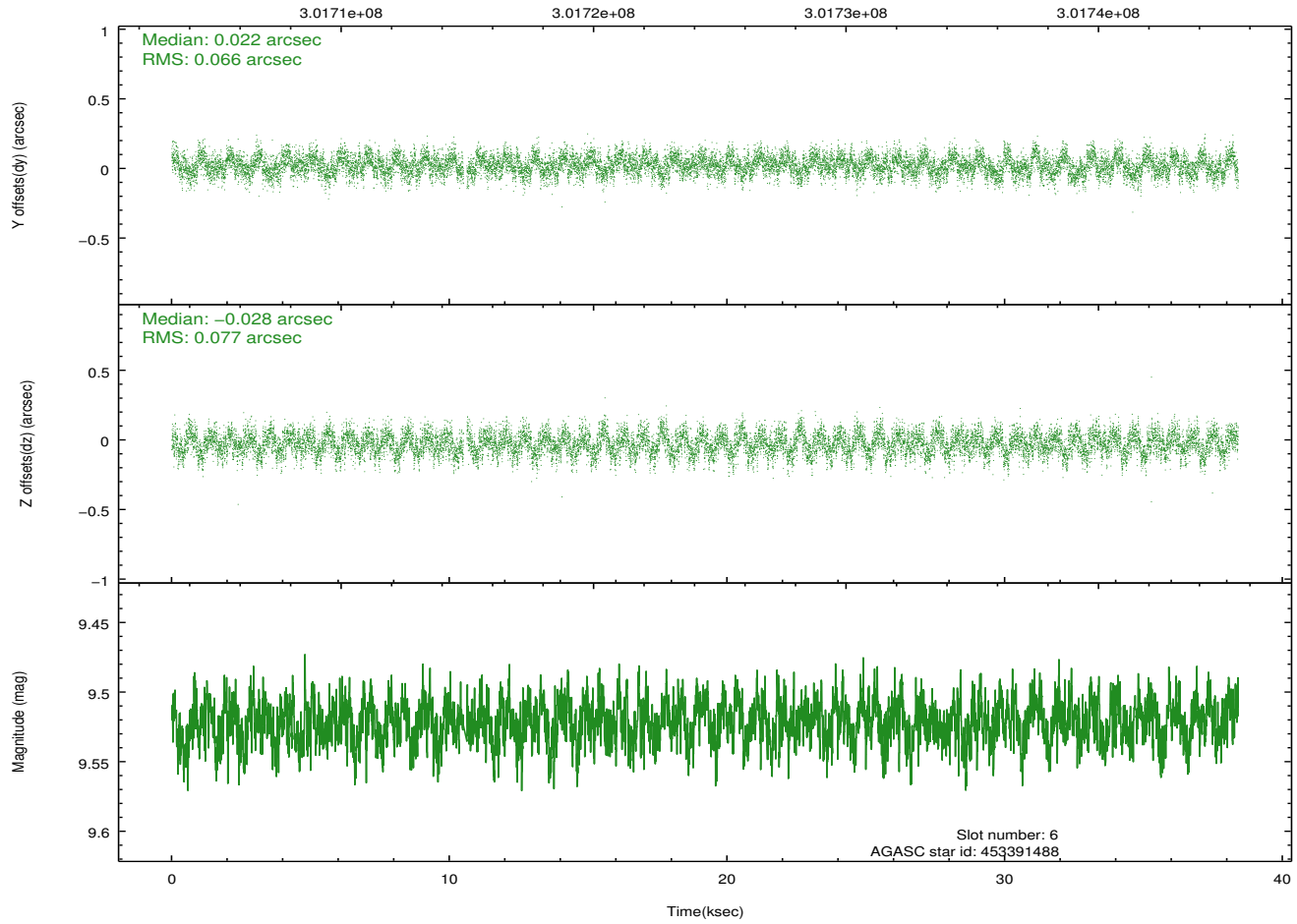
Time (s)



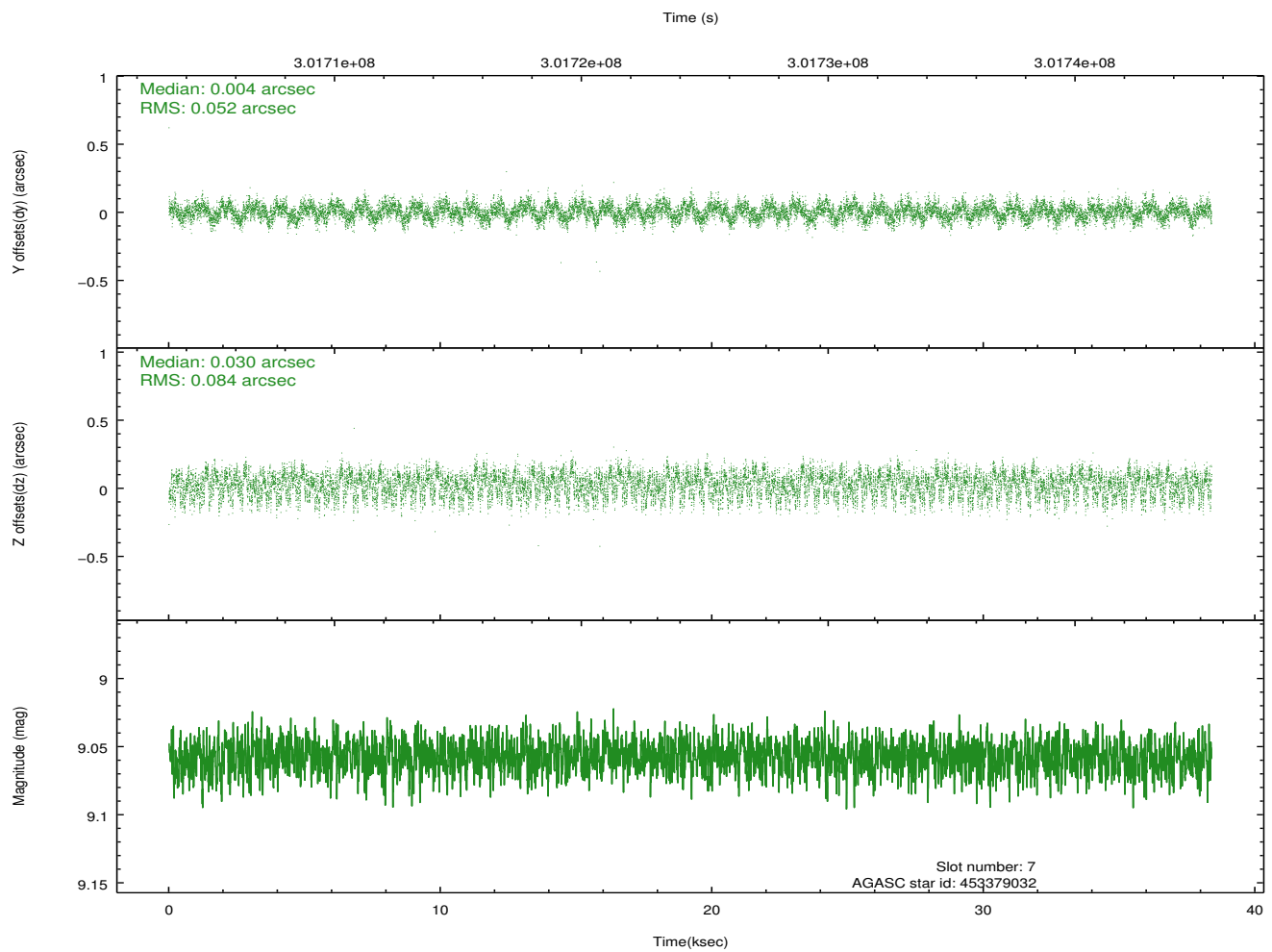
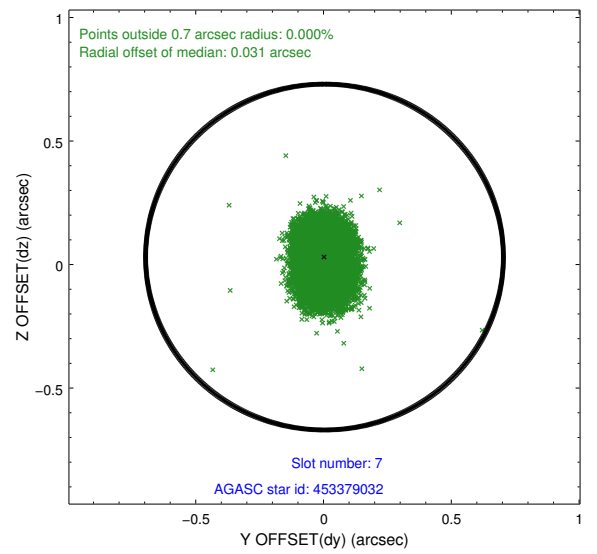
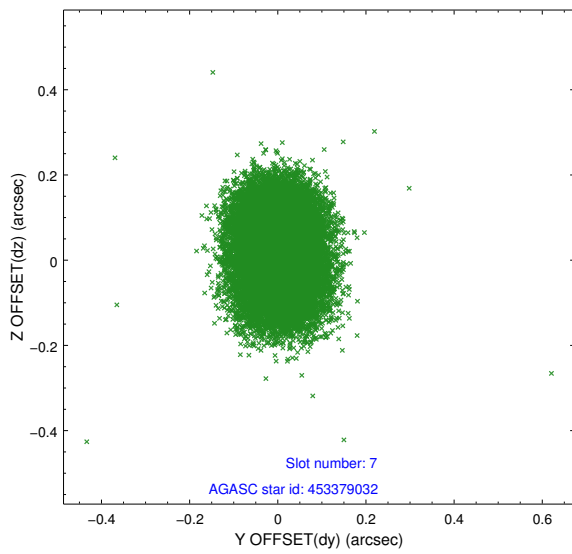
2.4.4 Slot 6



Time (s)

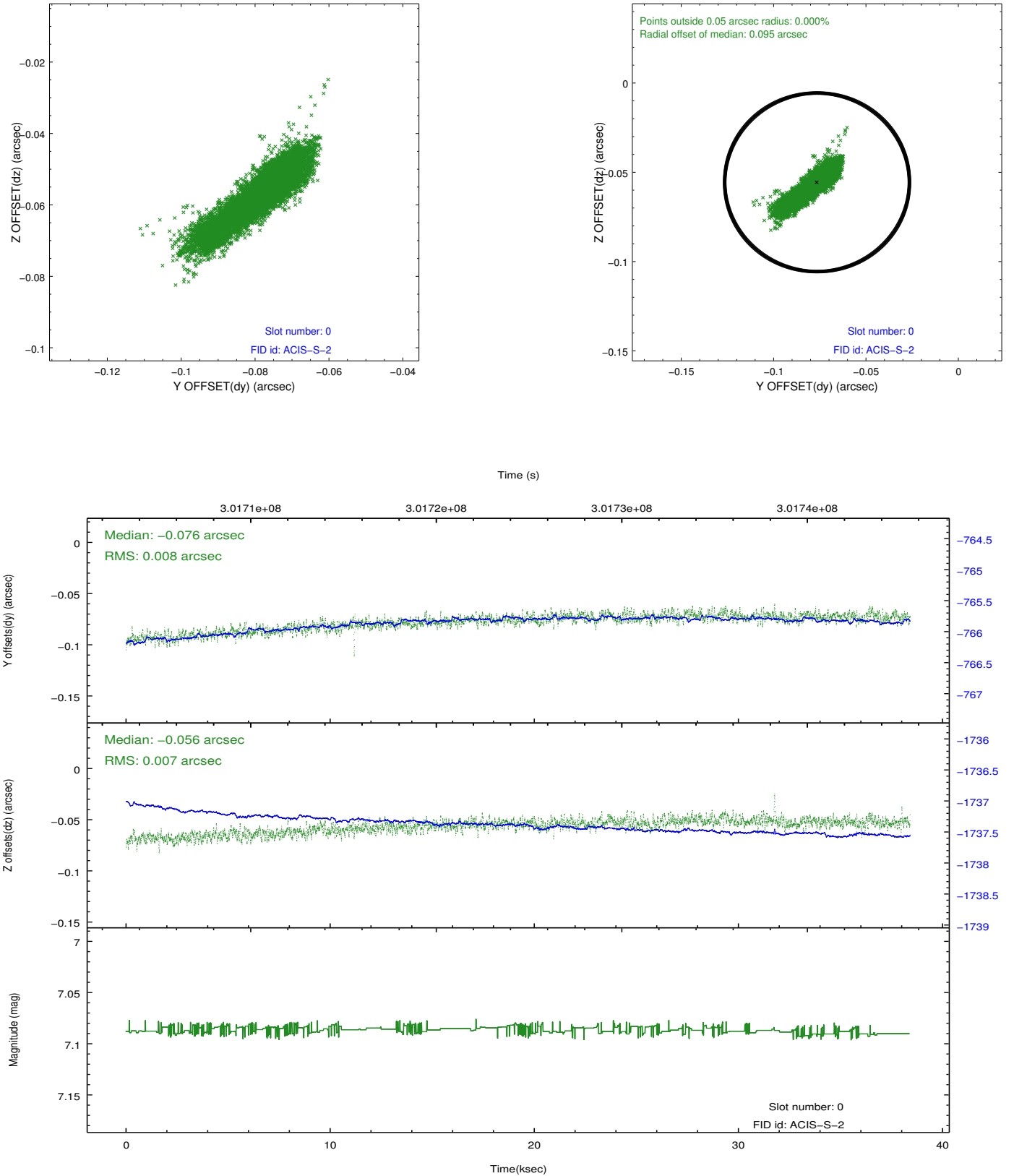


2.4.5 Slot 7

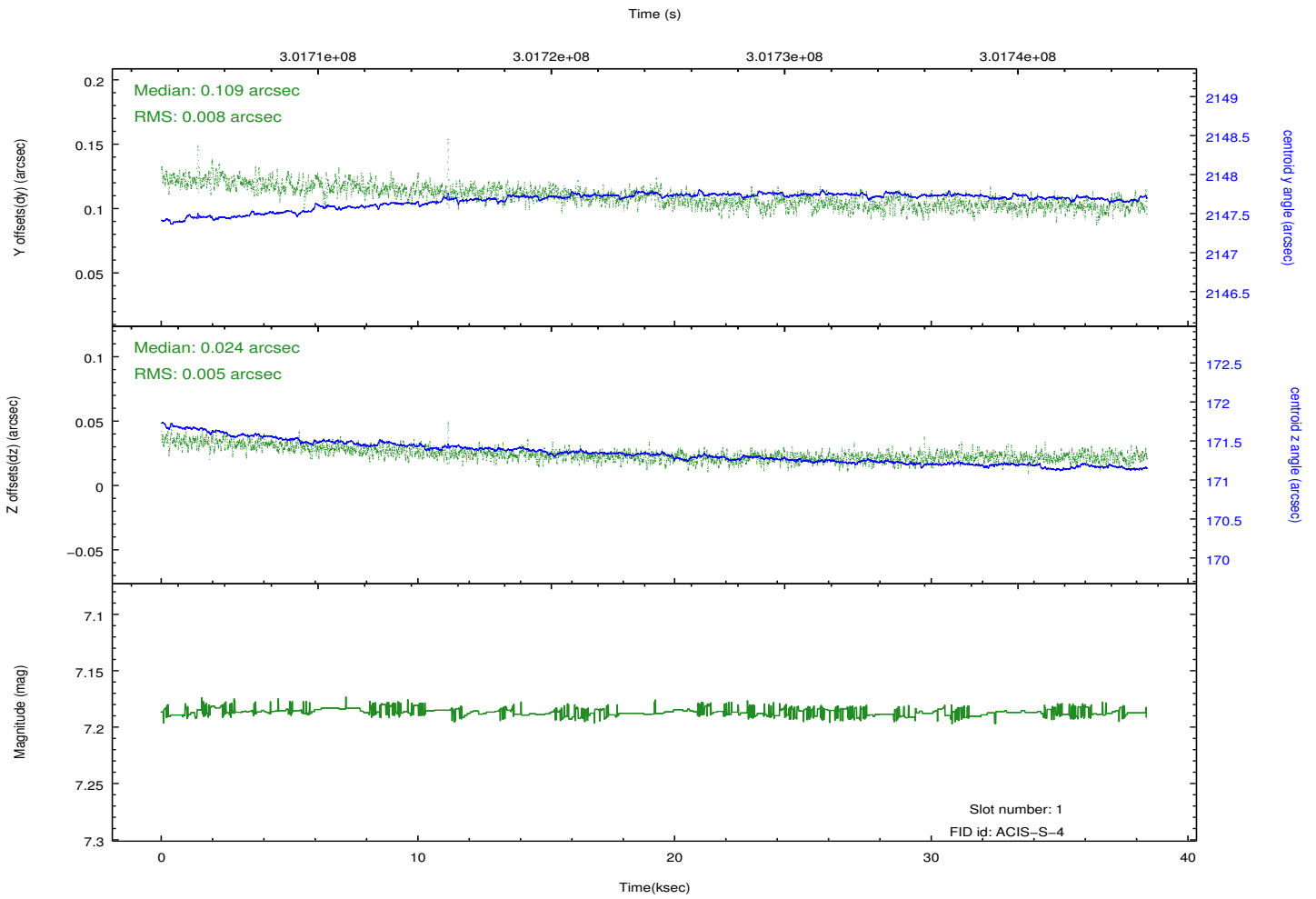
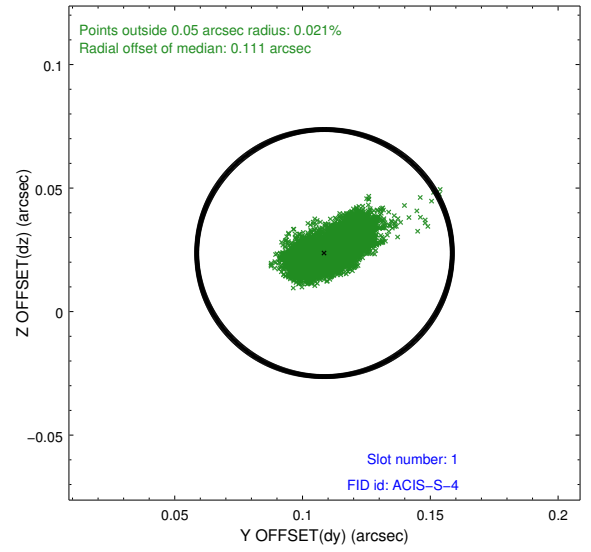
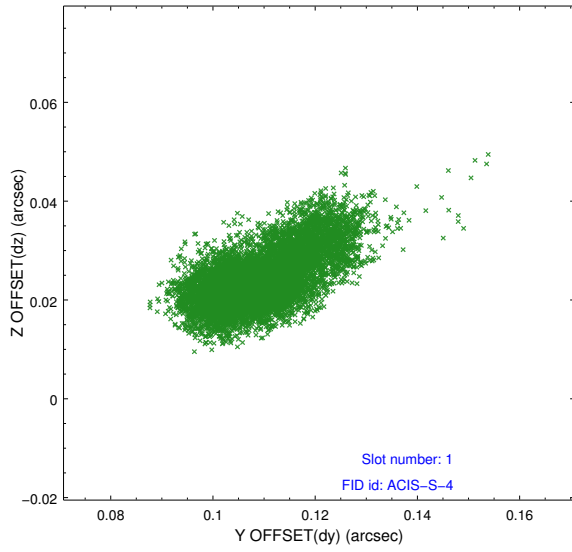


2.5 FID Slots

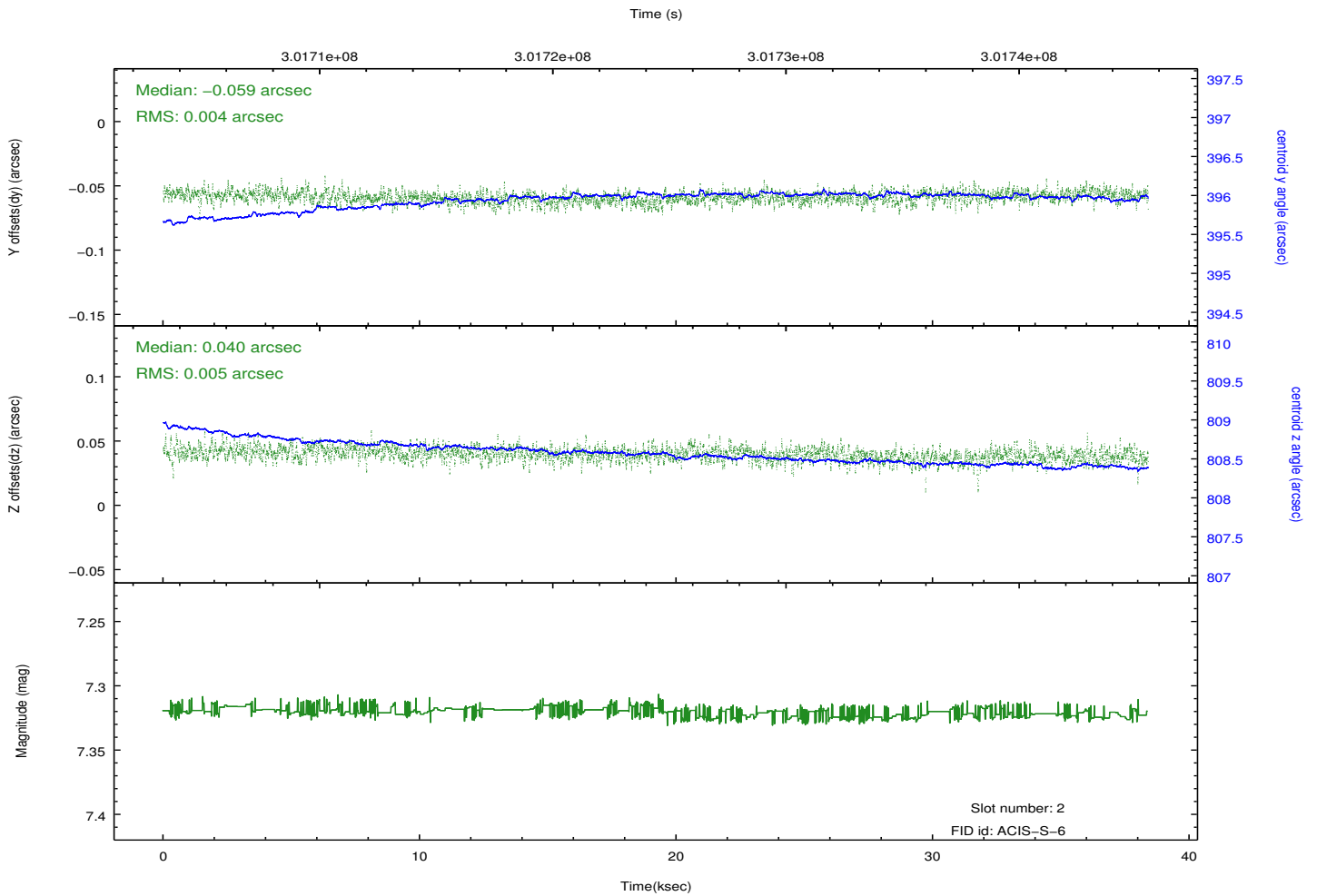
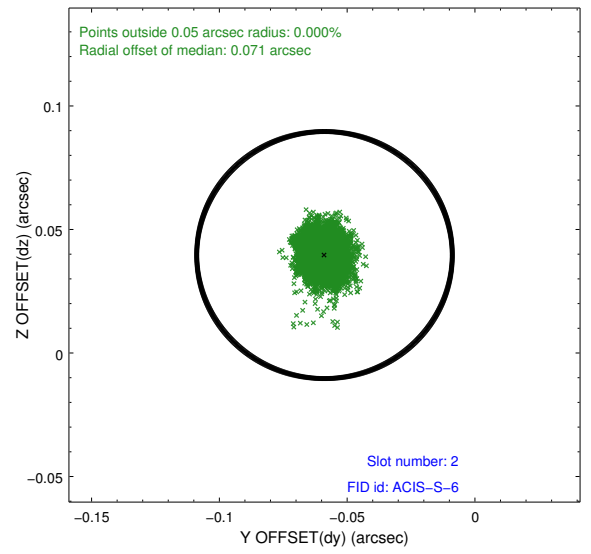
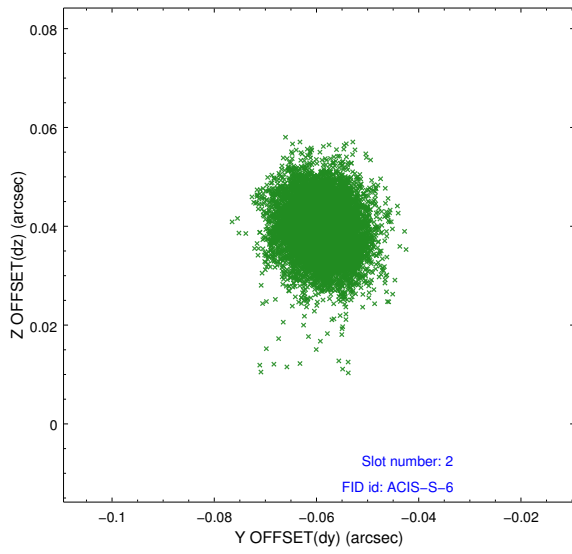
2.5.1 Slot 0



2.5.2 Slot 1



2.5.3 Slot 2



A Summary

A.1 Status

V&V Scientist	Jen Lauer
V&V Date (YYYY-MM-DD)	2012.05.01
V&V Edition	1
V&V Disposition and Status	OK
V&V Charge Time	37.5317002

A.2 Comments

Joint proposal XMM+Spitzer.