

V&V Reference Report

L2 ASCDS Version : 8.4.5

Observation 834 - L2 Version 4
Chandra X-Ray Center

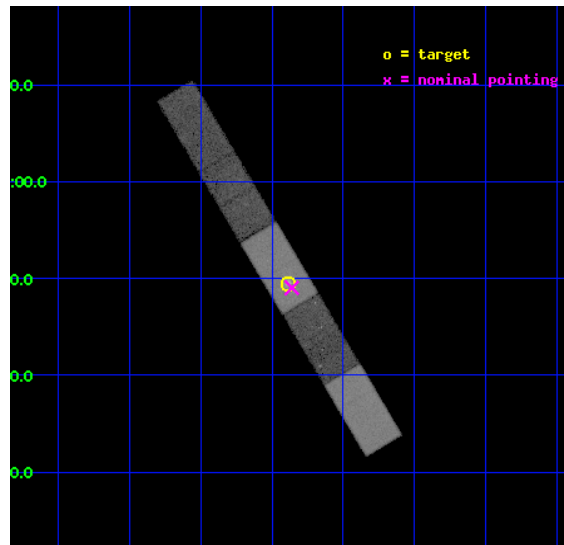
L2 Processing Date : Aug 26 2012

Contents

1	Front	2
2	OBI	3
2.1	OBI	3
2.1.1	Images	3
2.1.2	Bias	3
2.1.3	Parameters	4
2.1.4	Events	4
2.2	Compared Parameters	5
2.3	Aspect	6
2.4	Star Slots	9
2.4.1	Slot 3	9
2.4.2	Slot 4	10
2.4.3	Slot 5	11
2.4.4	Slot 6	12
2.4.5	Slot 7	13
2.5	FID Slots	14
2.5.1	Slot 0	14
2.5.2	Slot 1	15
2.5.3	Slot 2	16
A	Summary	17
A.1	Status	17
A.2	Comments	17

1 Front

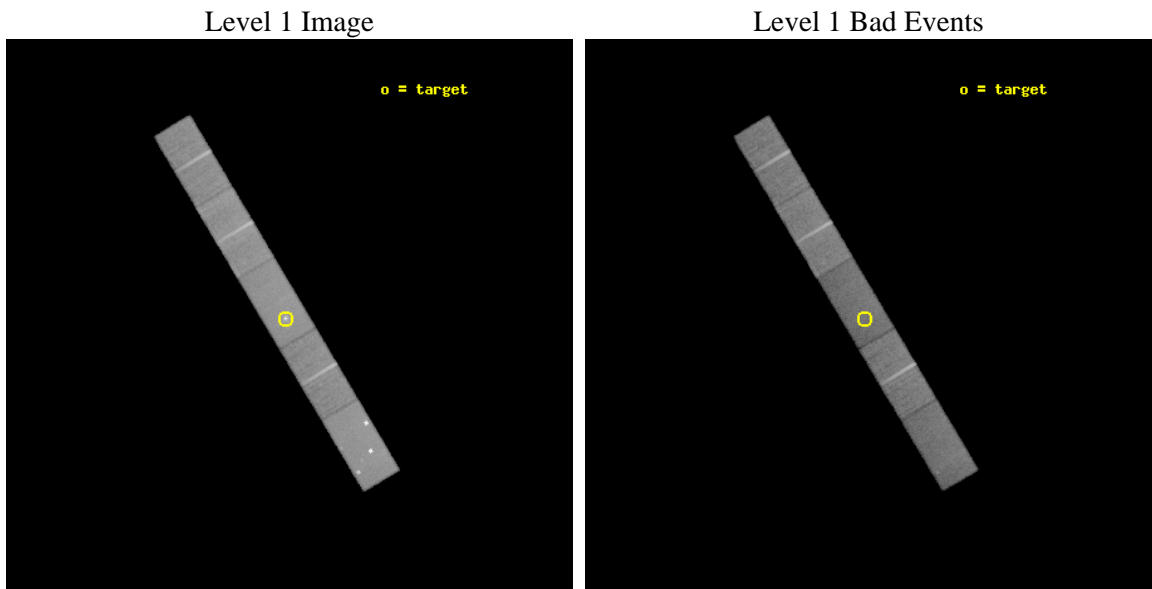
seq_num	700139	Sequence number
obs_id	834	Observation id
title	SOLVING THE PROBLEM OF THE CORE STRUCTURES AND SPECTRA OF NEARBY RADIO GALAXIES NGC 6251 AND NGC 4261	Proposal title
observer	Prof Mark Birkinshaw	Principal investigator
object	NGC 4261	Source name
dtcycle	0	
cycle	P	events from which exps? Prim/Second/Both
ra_targ	184.846667	Observer's specified target RA [deg]
dec_targ	5.824889	Observer's specified target Dec [deg]
ra_nom	184.84000120672	Nominal RA [deg]
dec_nom	5.8173815733356	Nominal Dec [deg]
roll_nom	239.11988846586	Nominal Roll [deg]
revision	4	Processing version of data
ontime	35184.59994176	Sum of GTIs [s]
livetime	34400.273701369	Livetime [s]
ontime5	35184.59994176	Sum of GTIs [s]
ontime6	35184.59994176	Sum of GTIs [s]
ontime7	35184.59994176	Sum of GTIs [s]
ontime8	35184.59994176	Sum of GTIs [s]
ontime9	35184.59994176	Sum of GTIs [s]
l2events	197087	Number of level 2 events



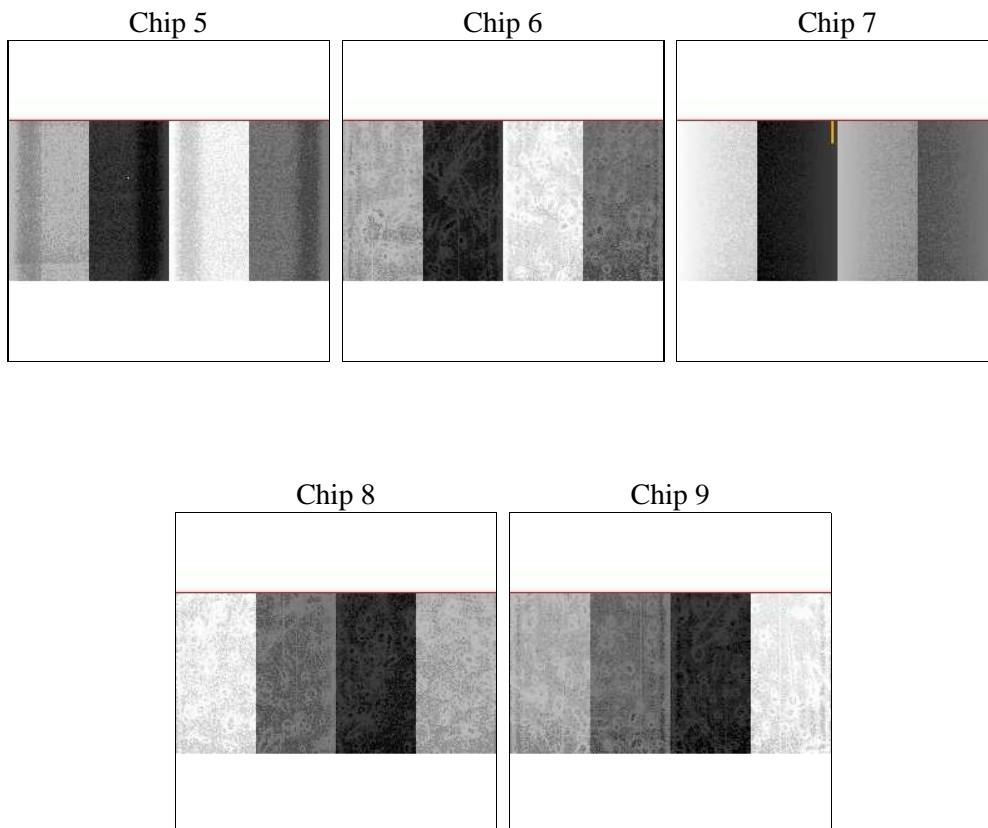
2 OBI

2.1 OBI

2.1.1 Images



2.1.2 Bias



2.1.3 Parameters

obi_num	1	Obi number	sched_exp_time	35000.000000	[s] Scheduled observation exposure time
ascdsver	8.4.5	Processing system revision	ontime	35184.59994176	Sum of GTIs [s]
caldbver	4.5.1.1	 	ontime5	35184.59994176	Sum of GTIs [s]
date	2012-08-26T21:22:27	Date and time of file creation	ontime6	35184.59994176	Sum of GTIs [s]
revision	4	Processing version of data	ontime7	35184.59994176	Sum of GTIs [s]
			ontime8	35184.59994176	Sum of GTIs [s]
			ontime9	35184.59994176	Sum of GTIs [s]
			l1events	816383	Number of level 1 events

2.1.4 Events

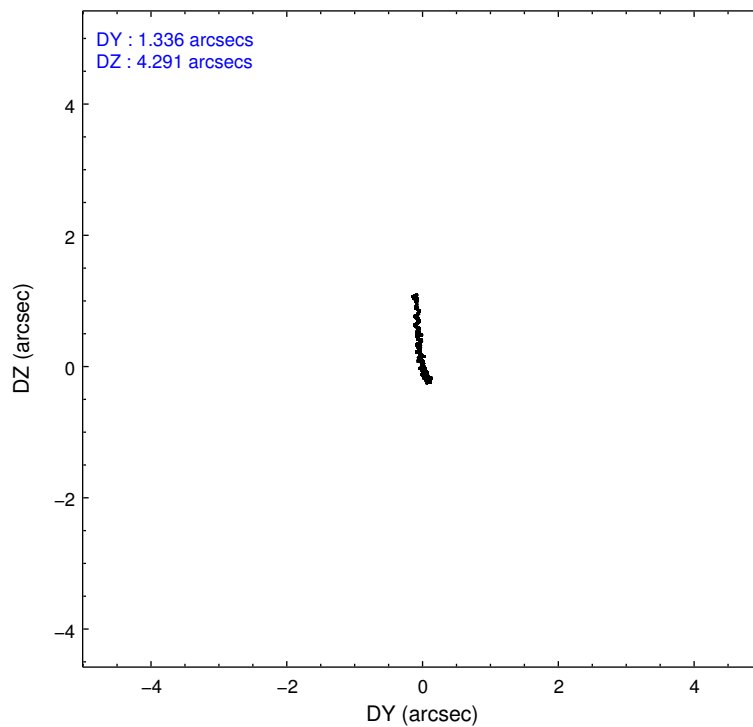
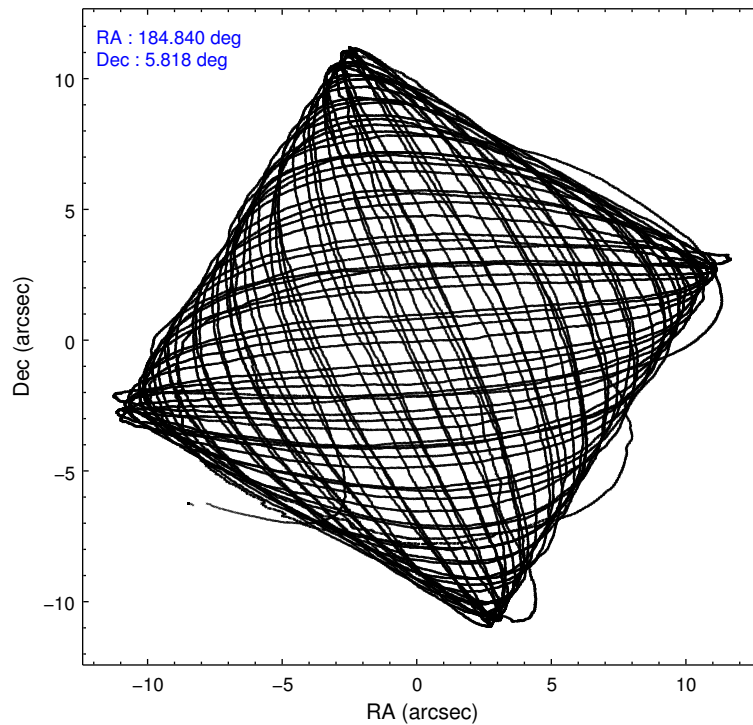
	ccd 5	ccd 6	ccd 7	ccd 8	ccd 9
level 1 events	196706	138256	168338	176579	136504
rejected events	87918	122143	85439	143563	121255
rejected %	44%	88%	50%	81%	88%

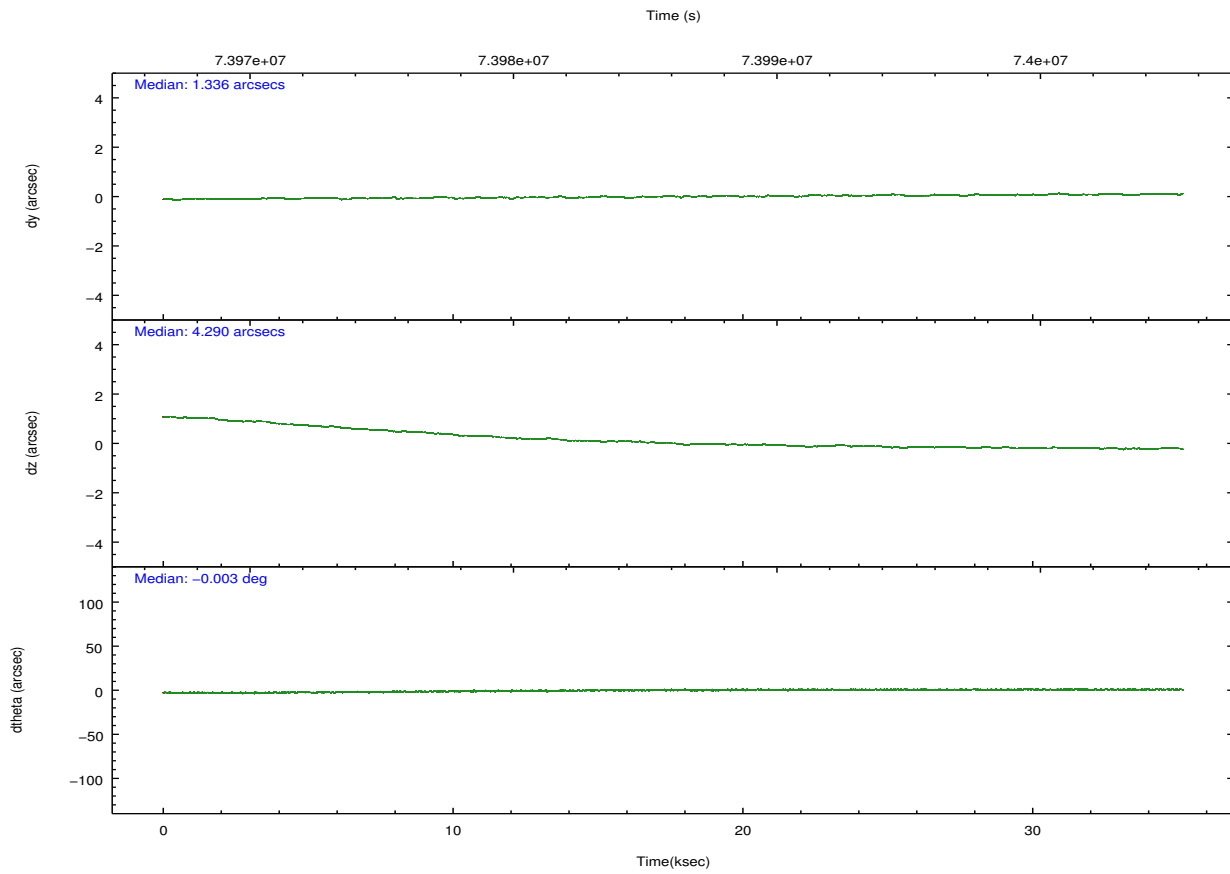
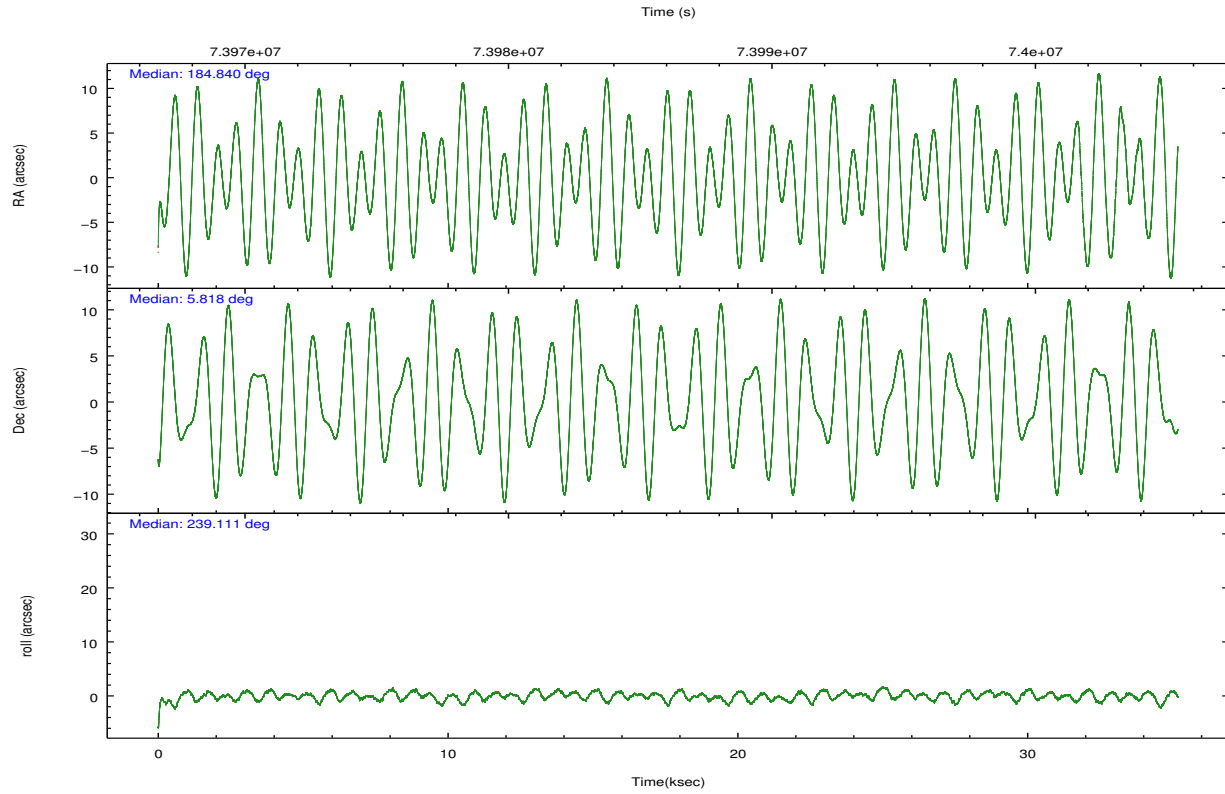
	ccd 5	ccd 6	ccd 7	ccd 8	ccd 9
grade 0 events	37484	7368	12923	10763	6373
	19%	5%	7%	6%	4%
grade 1 events	230	38	153	65	41
	0%	0%	0%	0%	0%
grade 2 events	24763	2773	17657	6823	2793
	12%	2%	10%	3%	2%
grade 3 events	4456	1835	8469	3686	1807
	2%	1%	5%	2%	1%
grade 4 events	4286	1736	8373	3369	1684
	2%	1%	4%	1%	1%
grade 5 events	12985	4599	14279	5861	4869
	6%	3%	8%	3%	3%
grade 6 events	38888	2554	36220	8659	2753
	19%	1%	21%	4%	2%
grade 7 events	73614	117353	70264	137353	116184
	37%	84%	41%	77%	85%

2.2 Compared Parameters

Parameter	Planned	Actual	Parameter	Planned	Actual
Instrument	ACIS	ACIS	Obspar format version number	7	7
Detector	ACIS-56789	ACIS-56789	Obspar file type	PREDICTED	ACTUAL
Grating	NONE	NONE	Obspar update status	NONE	UPDATED
Data mode	VFAINT	VFAINT	Number of optional ACIS chips dropped	0	0
Observation mode	POINTING	POINTING	On-chip summing requested	N	N
[deg] Pointing RA	184.840340	184.8400012067218	Subarray requested	CUSTOM	1/2
[deg] Pointing Dec	5.844824	5.81738157333558	Subarray start row	257	257
[deg] Pointing Roll	238.963223	239.1198884658589	Subarray row count	512	512
[mm] SIM focus pos	-0.684267	-0.6828225247311905	Alternating exposures requested	N	N
[mm] SIM defocus	0	0.001444936568705701	[s] Primary exposure time	0.000000	1.8
[mm] SIM translation stage pos	-190.132523	-190.1425803651734			
[mm] SIM translation stage offset	0	0.01005778216563158			
[s] Observation start time (MET)	73968647.184000	73967639.19954			
Observation start date	2000-05-06T02:49:43	2000-05-06T02:33:59			
[s] Observation end time (MET)	74003647.184000	74004849.26340599			
Observation end date	2000-05-06T12:33:03	2000-05-06T12:54:09			
Read mode	TIMED	TIMED			

2.3 Aspect



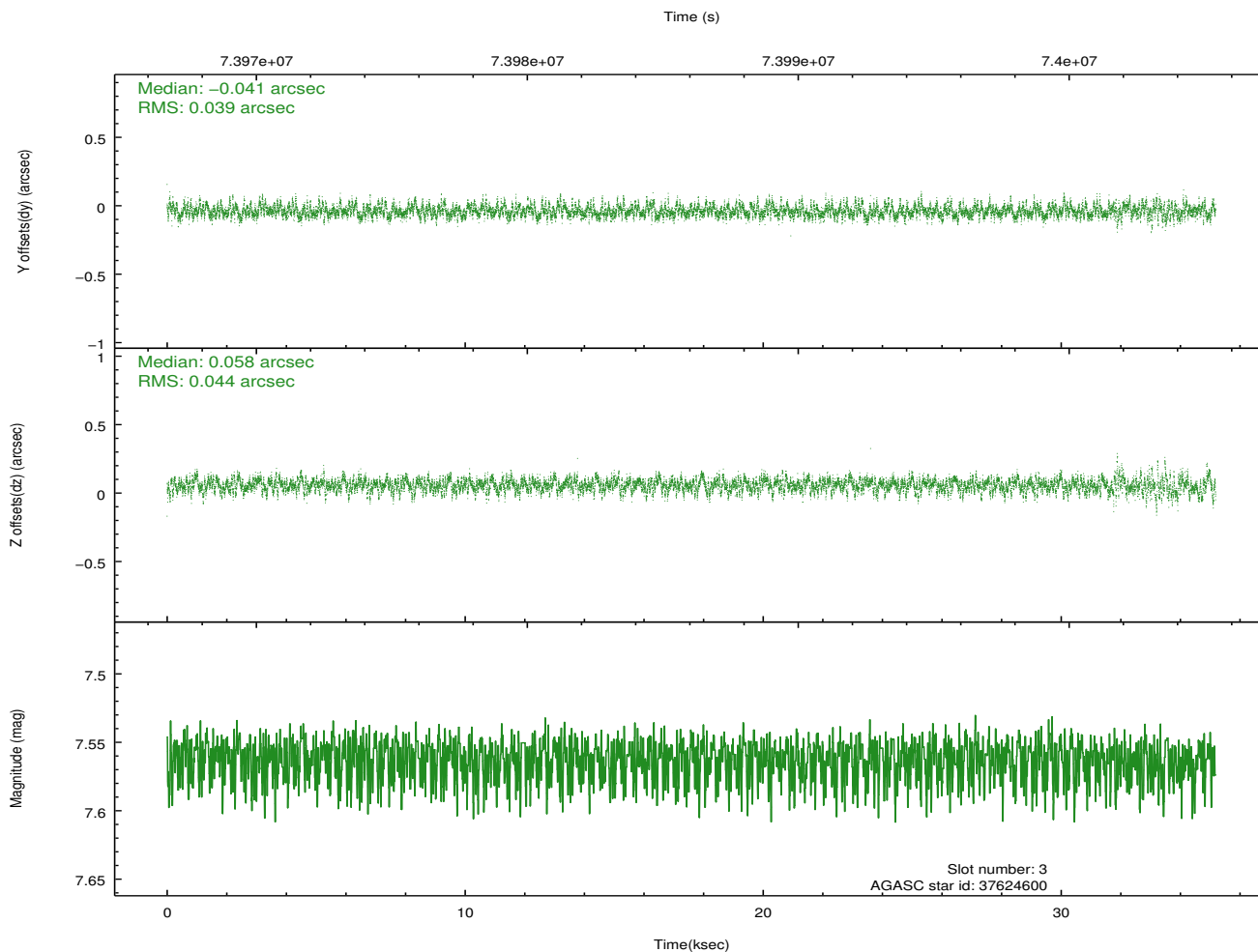
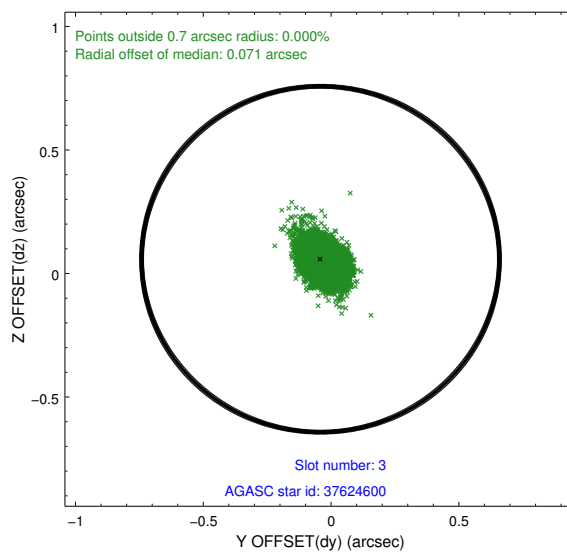
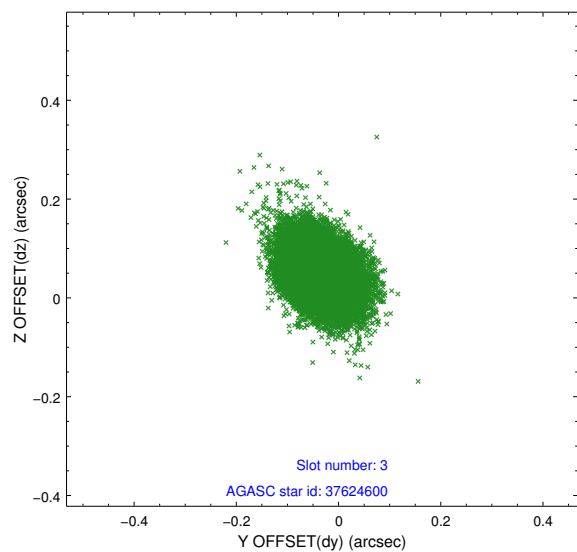


Slot Statistics

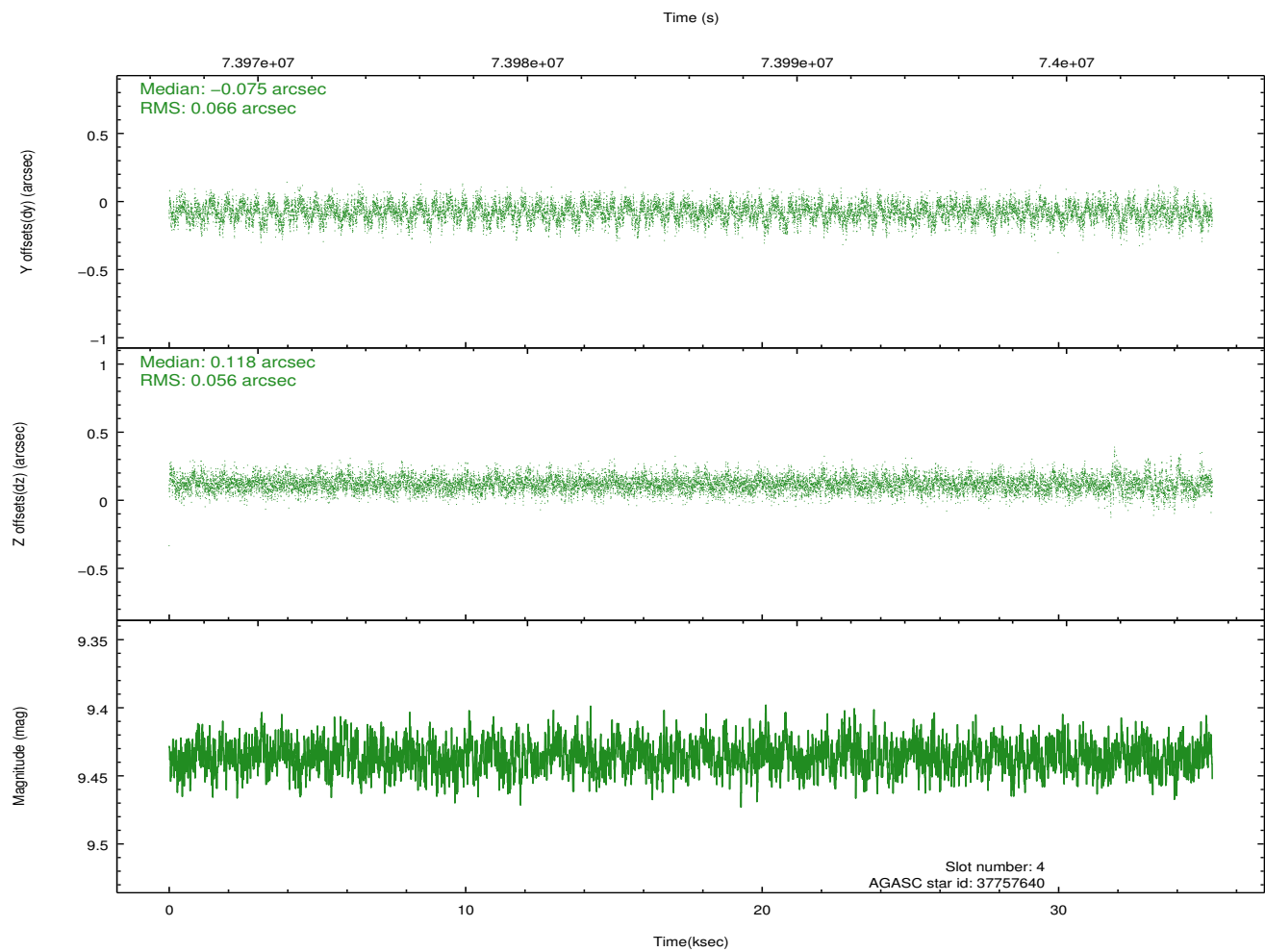
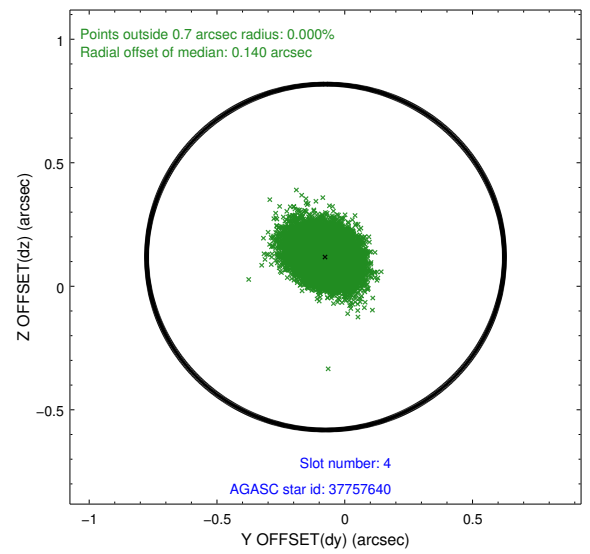
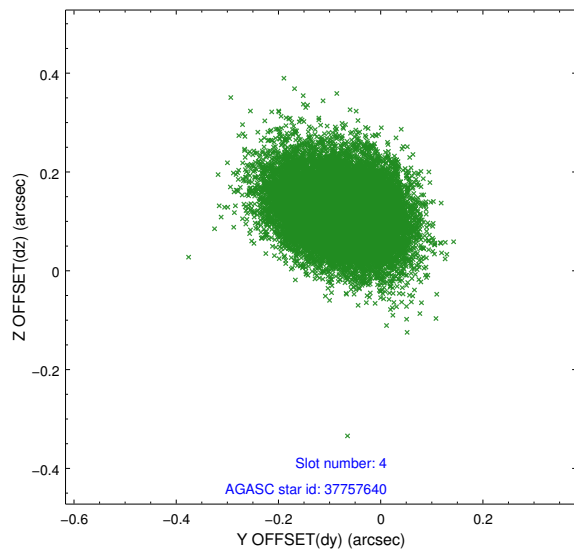
slot	status	id	mag	n_pts	med_dy	med_dz	dr1	dr2	ra	dec	mean_y	mean_z
0	FID	ACIS-S-2	7.11	8583	-0.020	-0.011	0.011	0.023	0.000000	0.000000	-753.97	-1725.51
1	FID	ACIS-S-4	7.21	8583	-0.005	0.013	0.007	0.012	0.000000	0.000000	2159.33	182.93
2	FID	ACIS-S-5	7.23	8583	-0.005	0.008	0.010	0.022	0.000000	0.000000	-1806.73	176.67
3	GUIDE	37624600	7.56	17162	-0.041	0.058	0.062	0.103	184.980551	5.671633	276.09	751.59
4	GUIDE	37757640	9.44	17153	-0.075	0.118	0.092	0.150	185.384586	6.104462	-1805.39	1186.49
5	GUIDE	37620360	9.08	17158	0.062	-0.151	0.088	0.144	183.993071	5.640227	2195.68	-2222.46
6	GUIDE	37757896	9.34	17148	-0.051	0.084	0.092	0.147	185.303648	5.490342	237.65	2079.90
7	GUIDE	37618024	9.67	17151	0.105	-0.112	0.094	0.155	184.542594	6.065940	-131.39	-1324.12

2.4 Star Slots

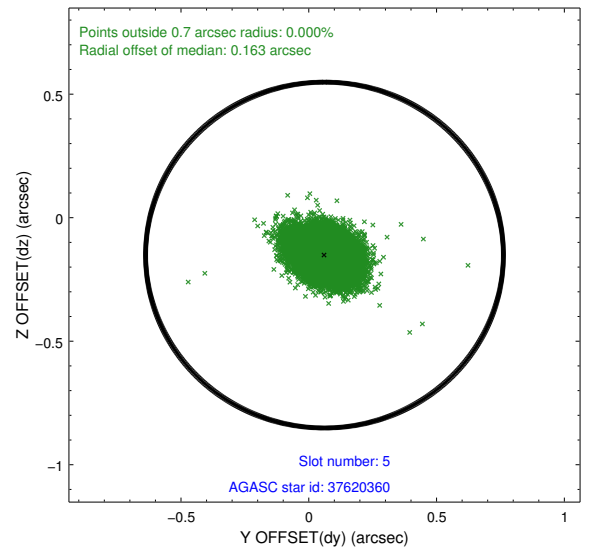
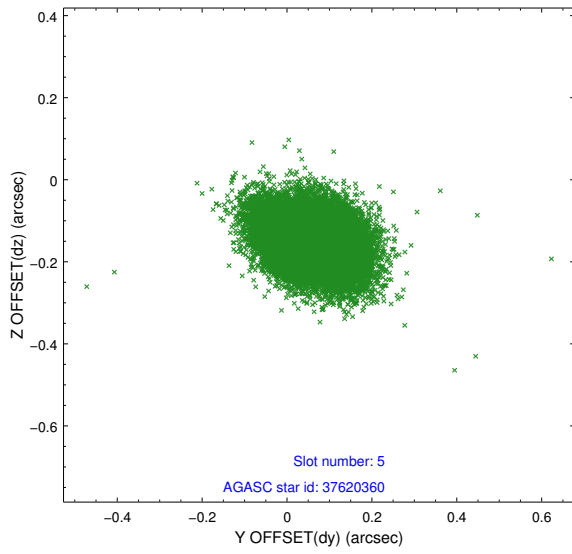
2.4.1 Slot 3



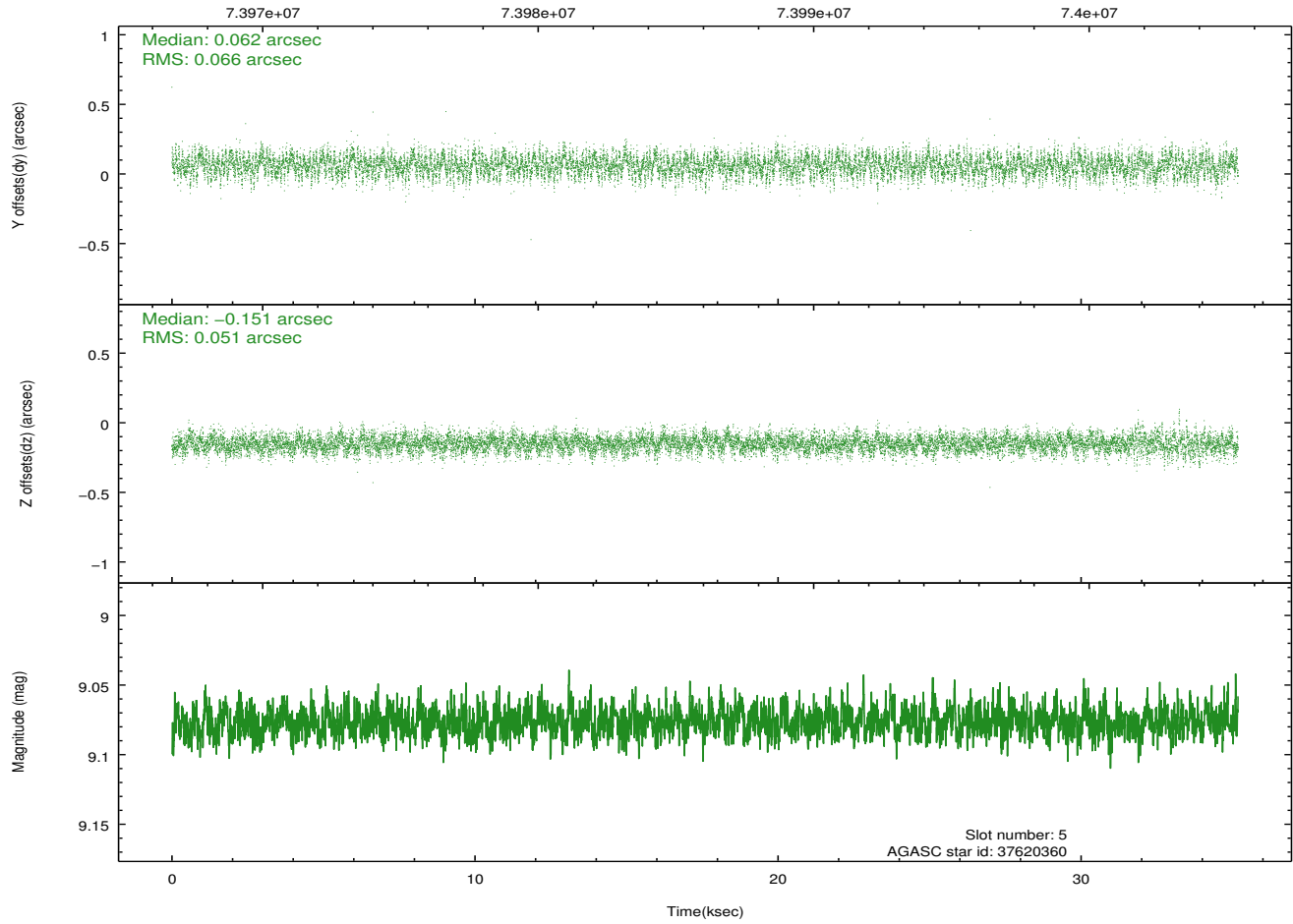
2.4.2 Slot 4



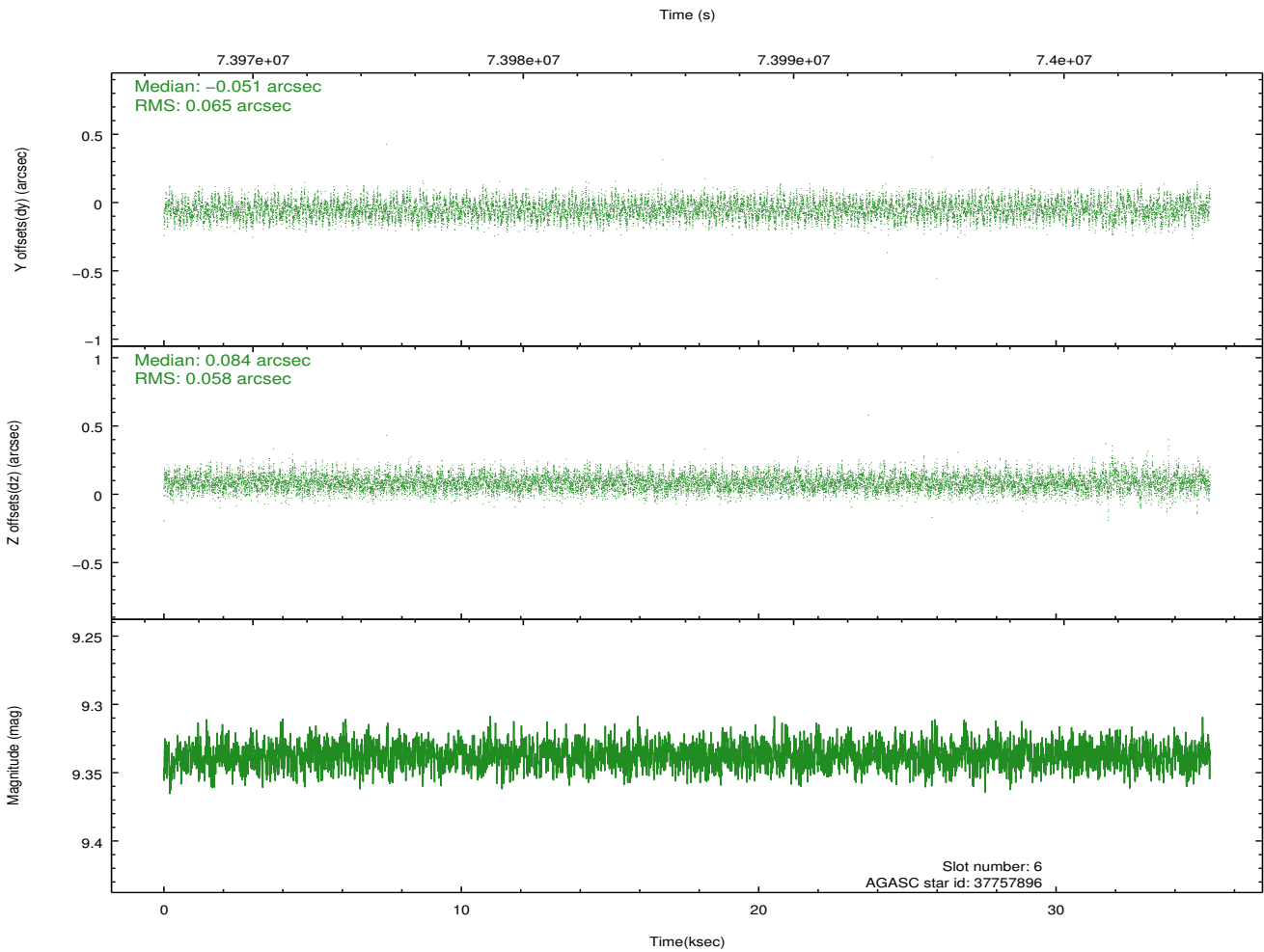
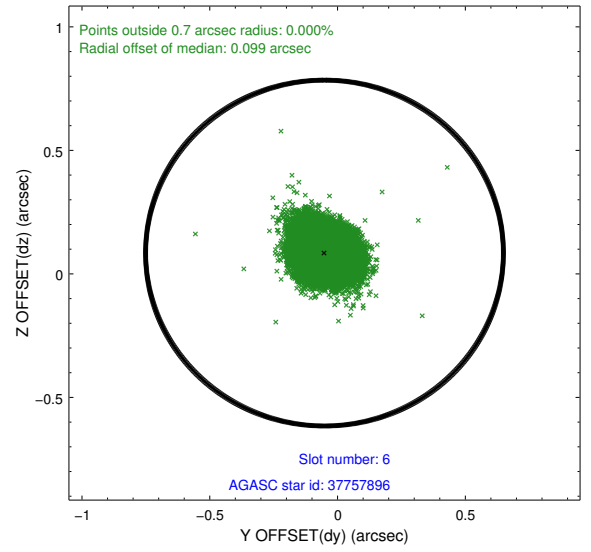
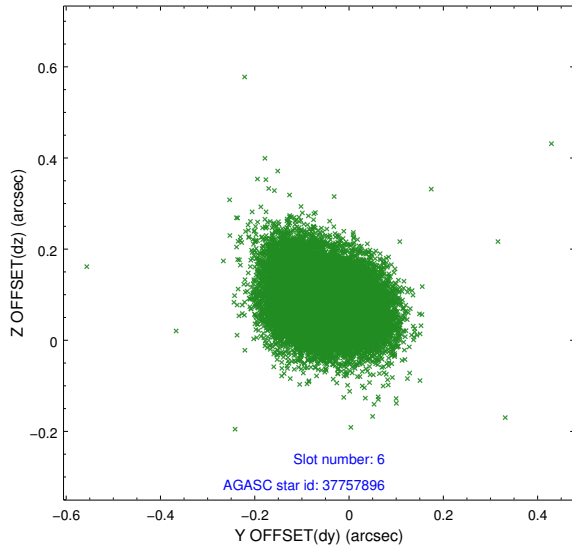
2.4.3 Slot 5



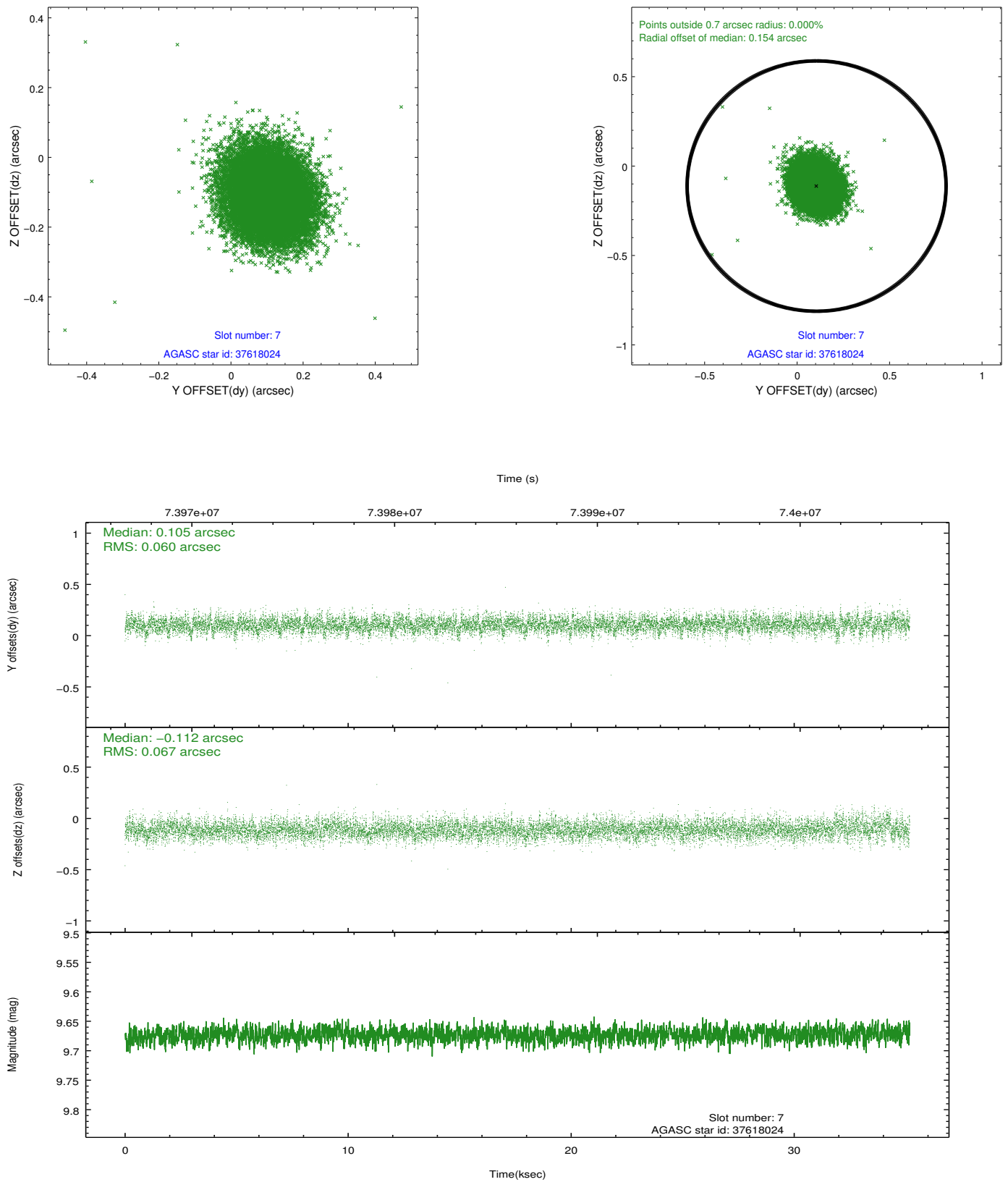
Time (s)



2.4.4 Slot 6

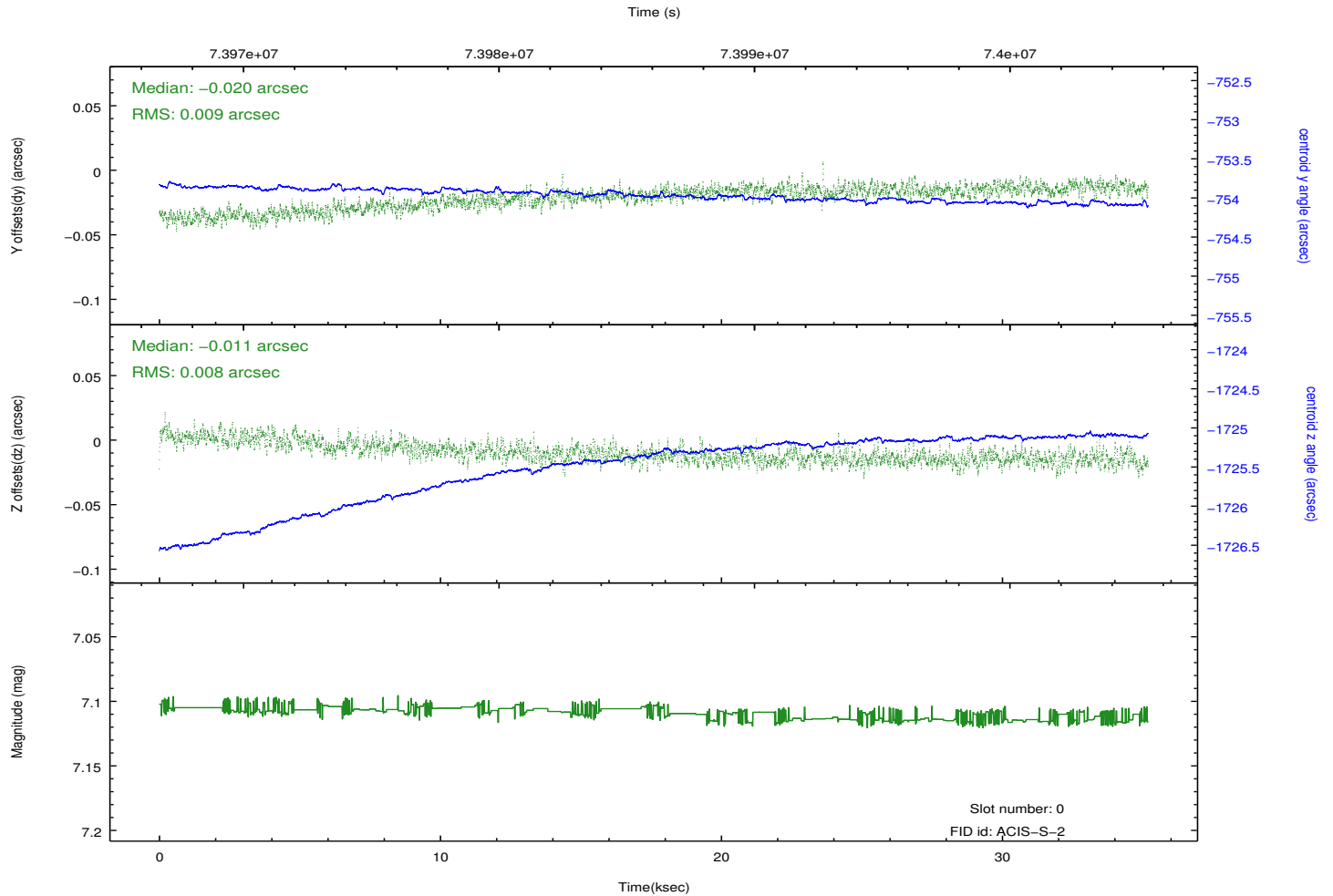
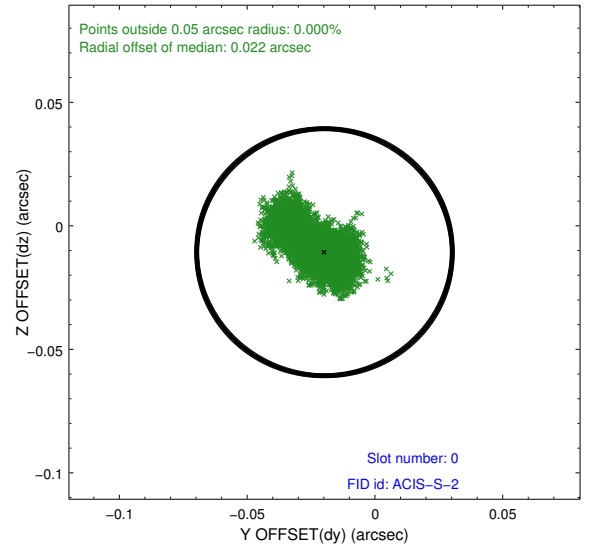
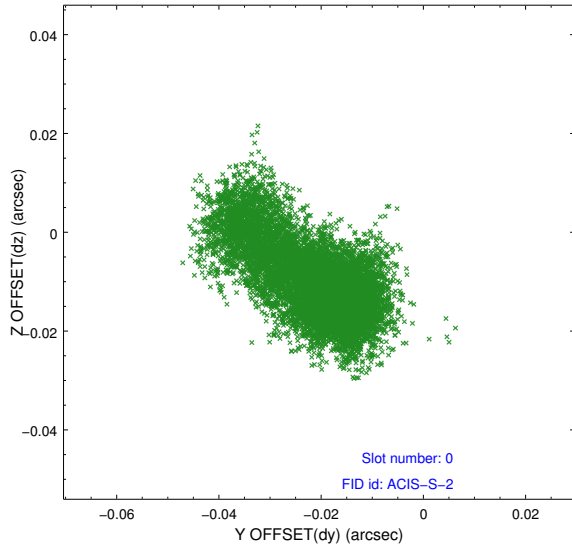


2.4.5 Slot 7

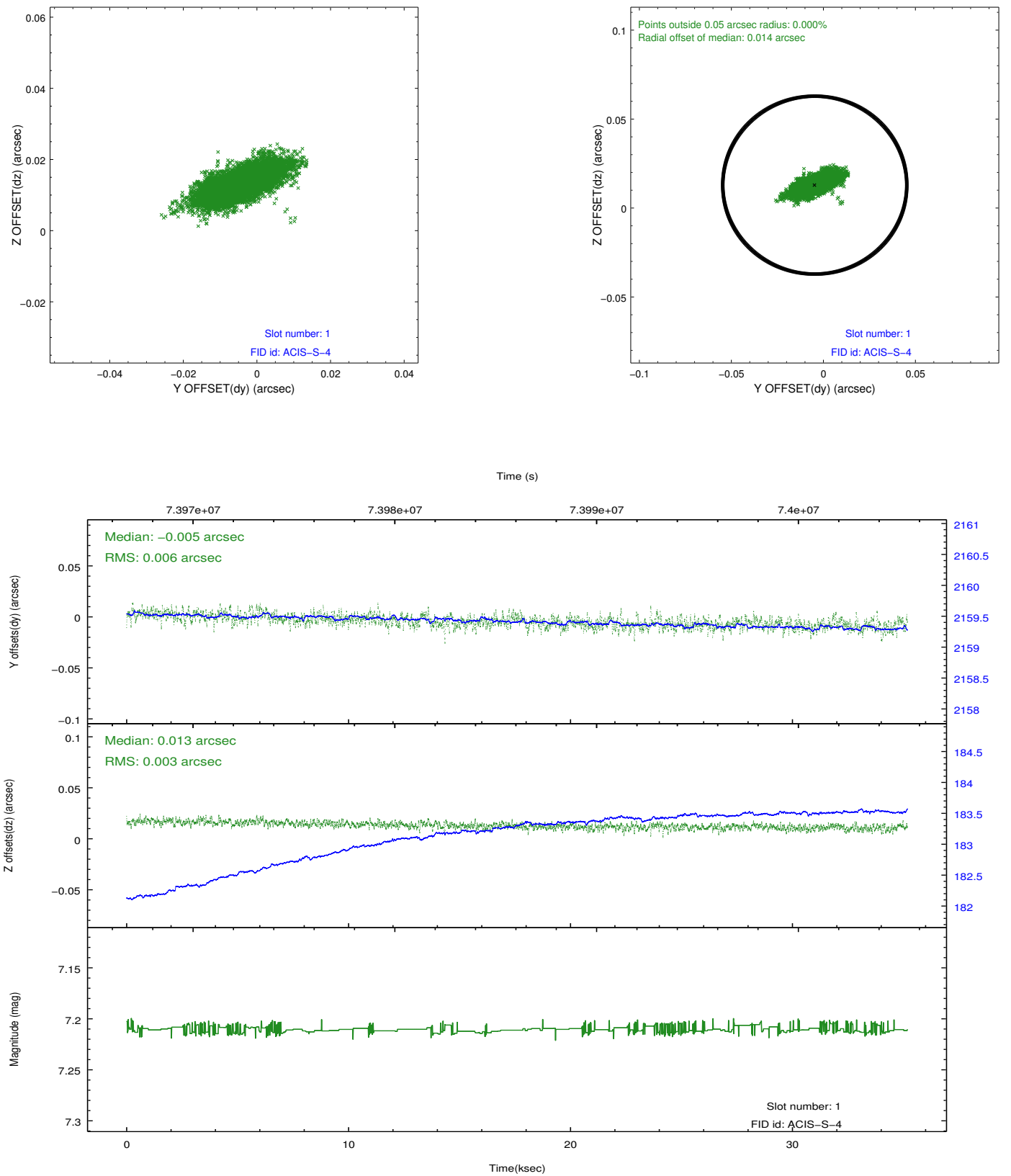


2.5 FID Slots

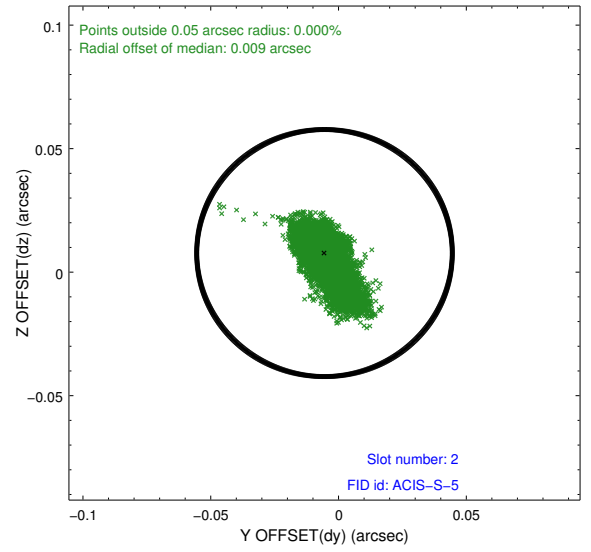
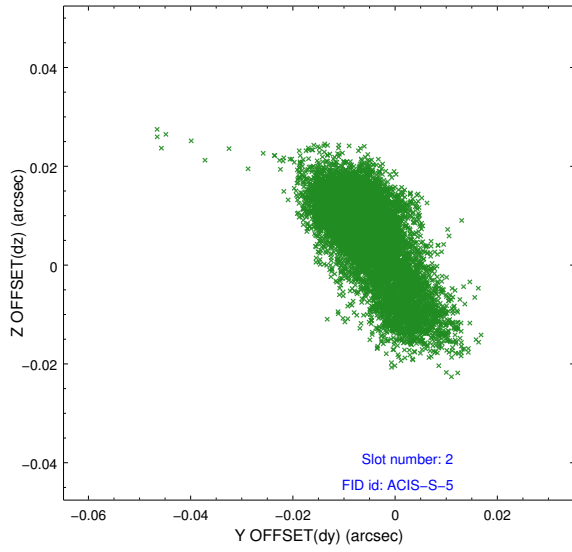
2.5.1 Slot 0



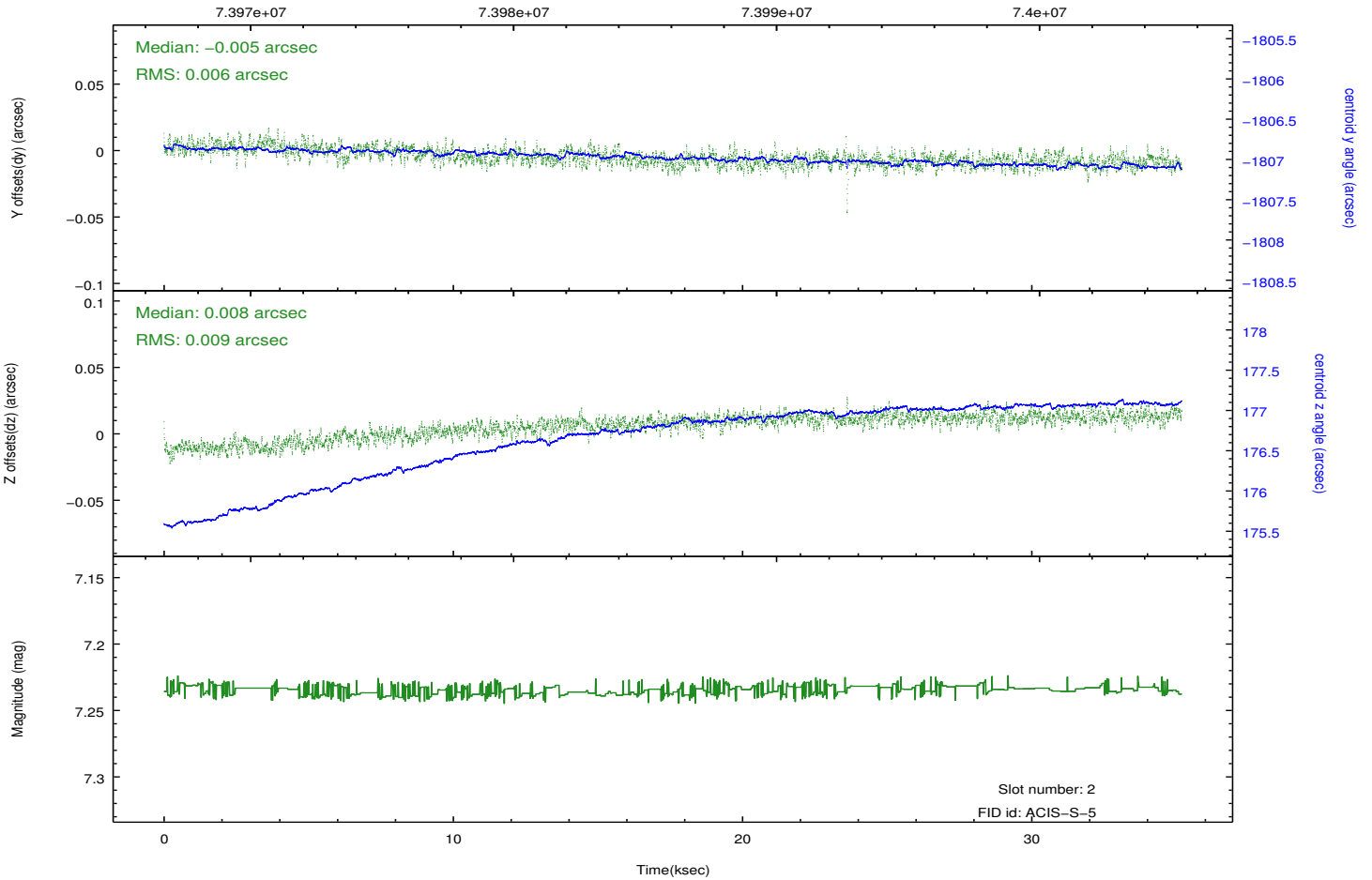
2.5.2 Slot 1



2.5.3 Slot 2



Time (s)



A Summary

A.1 Status

V&V Scientist	Jen Lauer
V&V Date (YYYY-MM-DD)	2012.08.29
V&V Edition	1
V&V Disposition and Status	OK
V&V Charge Time	35.182

A.2 Comments