

# V&V Reference Report

## L2 ASCDS Version : 8.4.4

Observation 8454 - L2 Version 3  
Chandra X-Ray Center

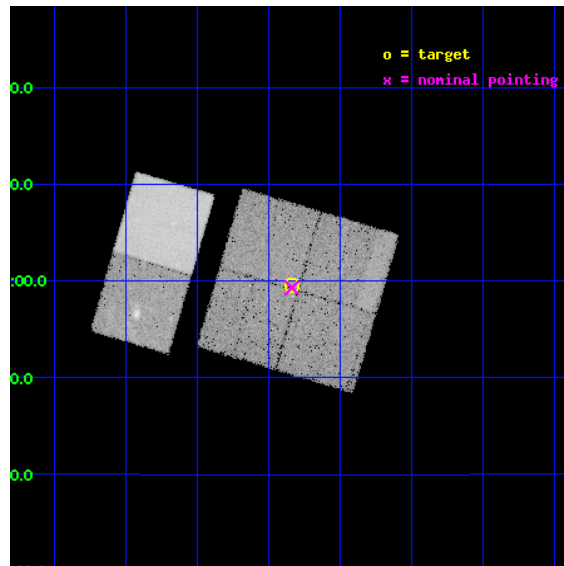
L2 Processing Date : Apr 19 2012

## Contents

<b>1</b>	<b>Front</b>	<b>2</b>
<b>2</b>	<b>OBI</b>	<b>3</b>
2.1	OBI . . . . .	3
2.1.1	Images . . . . .	3
2.1.2	Bias . . . . .	3
2.1.3	Parameters . . . . .	4
2.1.4	Events . . . . .	4
2.2	Compared Parameters . . . . .	5
2.3	Aspect . . . . .	6
2.4	Star Slots . . . . .	9
2.4.1	Slot 3 . . . . .	9
2.4.2	Slot 4 . . . . .	10
2.4.3	Slot 5 . . . . .	11
2.4.4	Slot 6 . . . . .	12
2.4.5	Slot 7 . . . . .	13
2.5	FID Slots . . . . .	14
2.5.1	Slot 0 . . . . .	14
2.5.2	Slot 1 . . . . .	15
2.5.3	Slot 2 . . . . .	16
<b>A</b>	<b>Summary</b>	<b>17</b>
A.1	Status . . . . .	17
A.2	Comments . . . . .	17

# 1 Front

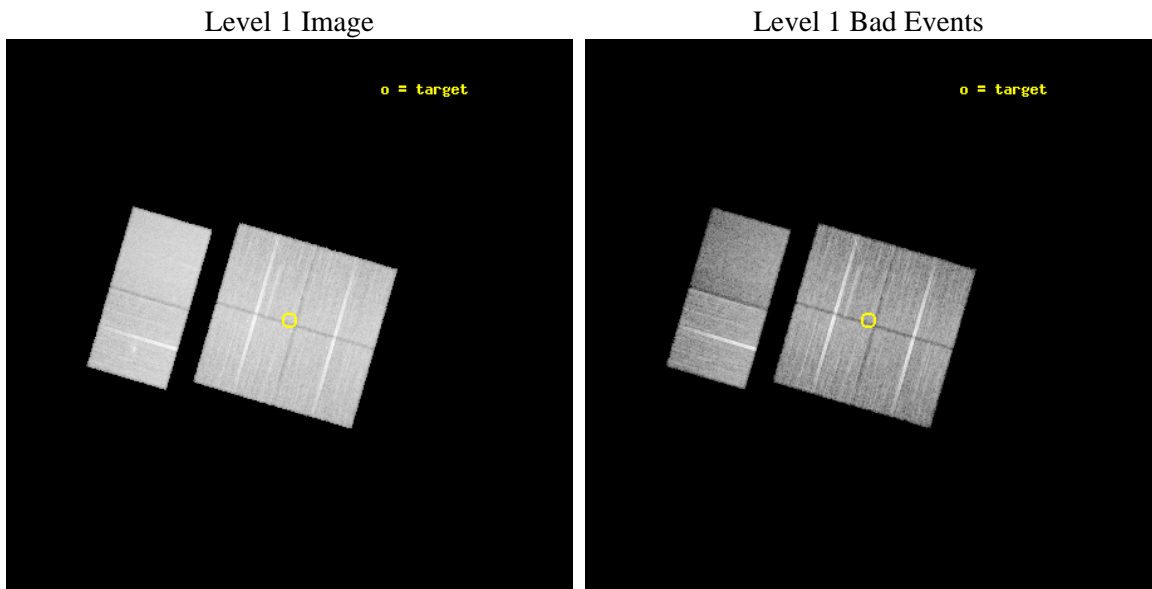
seq_num	200459	Sequence number
obs_id	8454	Observation id
title	The First ACIS Look at a Triggered Rosette Cluster	Proposal title
observer	Professor Gordon Garmire	Principal investigator
object	NGC2244 Satellite	Source name
dtycycle	0	&#160
cycle	P	events from which exps? Prim/Second/Both
ra_targ	97.71	Observer's specified target RA [deg]
dec_targ	4.992778	Observer's specified target Dec [deg]
ra_nom	97.709555484979	Nominal RA [deg]
dec_nom	4.9880830306836	Nominal Dec [deg]
roll_nom	286.3287485678	Nominal Roll [deg]
revision	3	Processing version of data
ontime	20489.476942778	Sum of GTIs [s]
livetime	20230.026848446	Livetime [s]
ontime0	20499.199923694	Sum of GTIs [s]
ontime1	20499.199923694	Sum of GTIs [s]
ontime2	20499.199923694	Sum of GTIs [s]
ontime3	20489.476942778	Sum of GTIs [s]
ontime6	20499.199923694	Sum of GTIs [s]
ontime7	20499.199923694	Sum of GTIs [s]
l2events	191992	Number of level 2 events



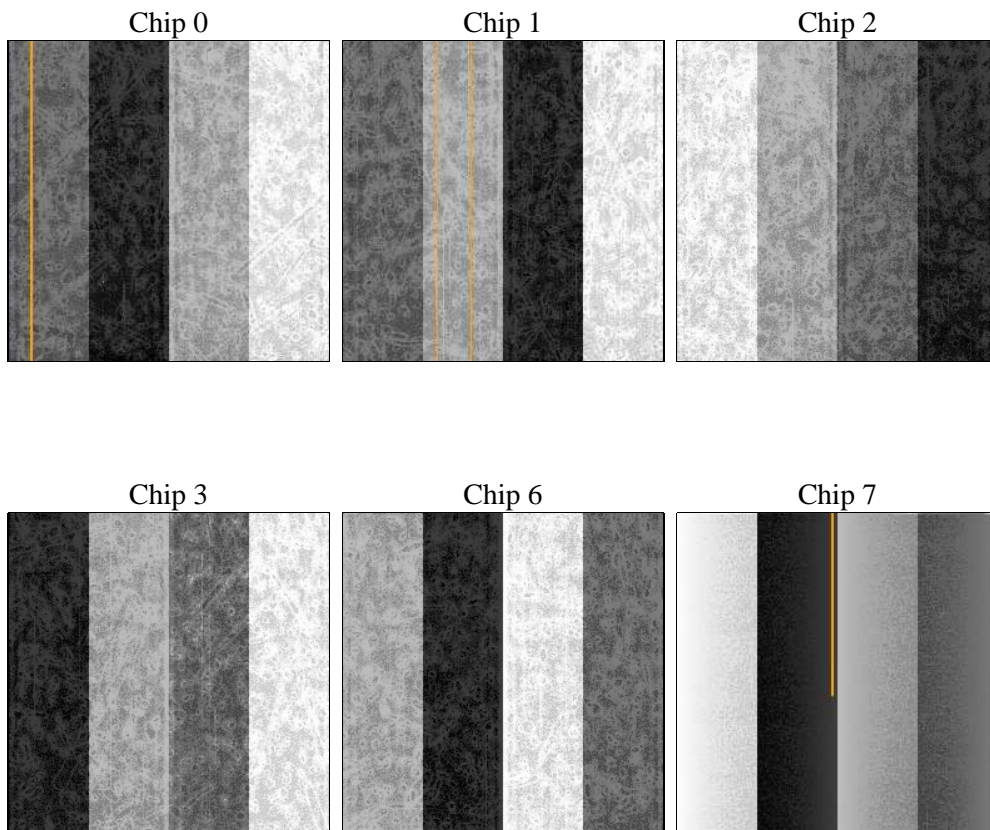
## 2 OBI

### 2.1 OBI

#### 2.1.1 Images



#### 2.1.2 Bias



### 2.1.3 Parameters

obi_num	0	Obi number	sched_exp_time	20341.062000	[s] Scheduled observation exposure time
ascdsver	8.4.4	Processing system revision	ontime	20489.476942778	Sum of GTIs [s]
caldbver	4.4.9	&#160	ontime0	20499.199923694	Sum of GTIs [s]
date	2012-04-19T15:00:36	Date and time of file creation	ontime1	20499.199923694	Sum of GTIs [s]
revision	3	Processing version of data	ontime2	20499.199923694	Sum of GTIs [s]
			ontime3	20489.476942778	Sum of GTIs [s]
			ontime6	20499.199923694	Sum of GTIs [s]
			ontime7	20499.199923694	Sum of GTIs [s]
			l1events	1046251	Number of level 1 events

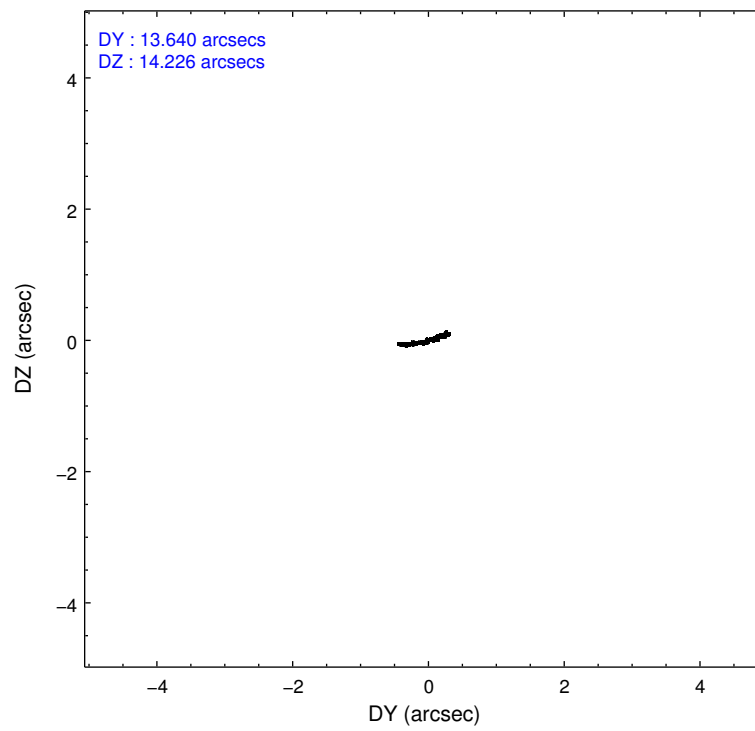
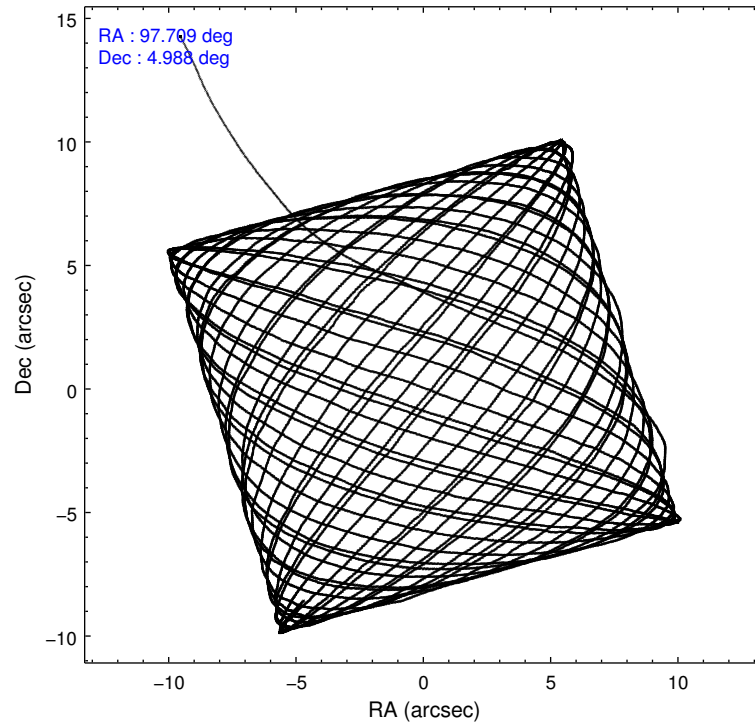
### 2.1.4 Events

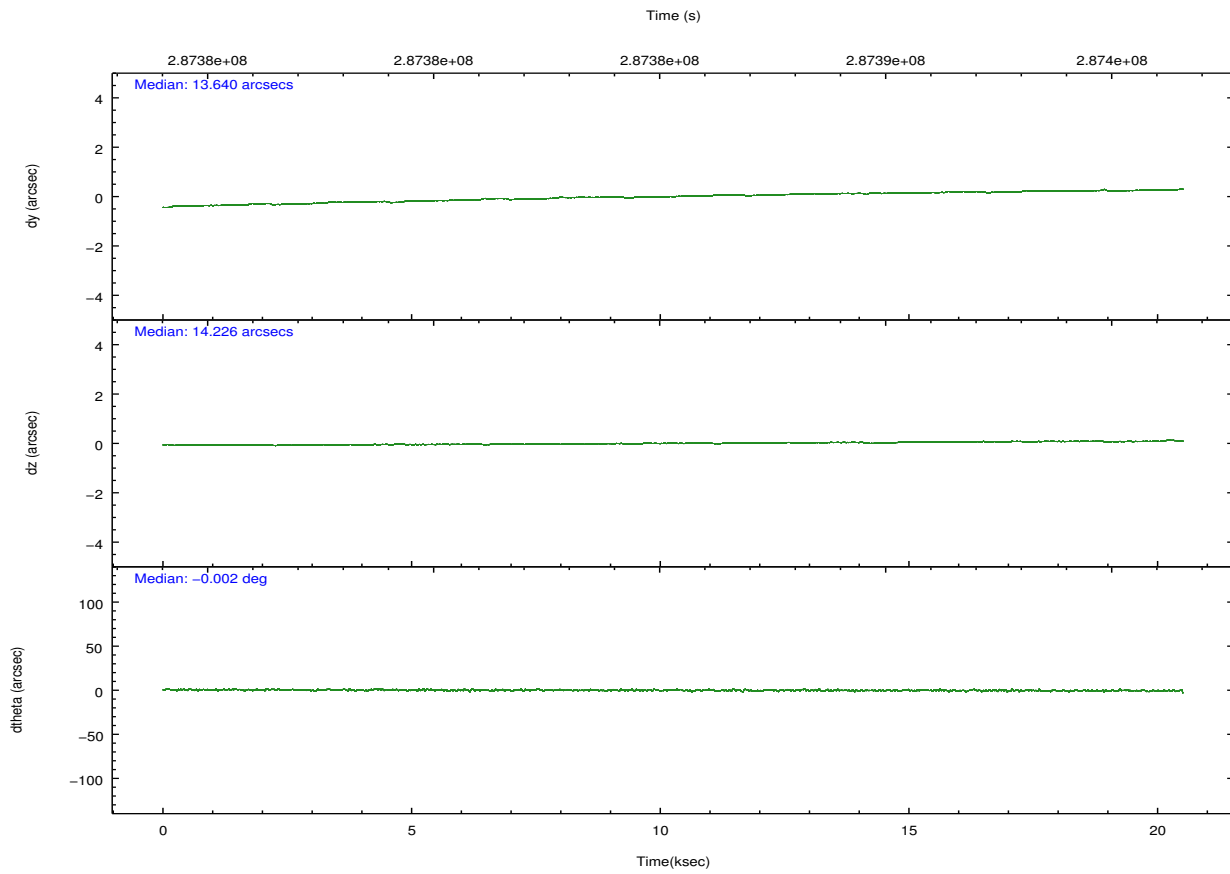
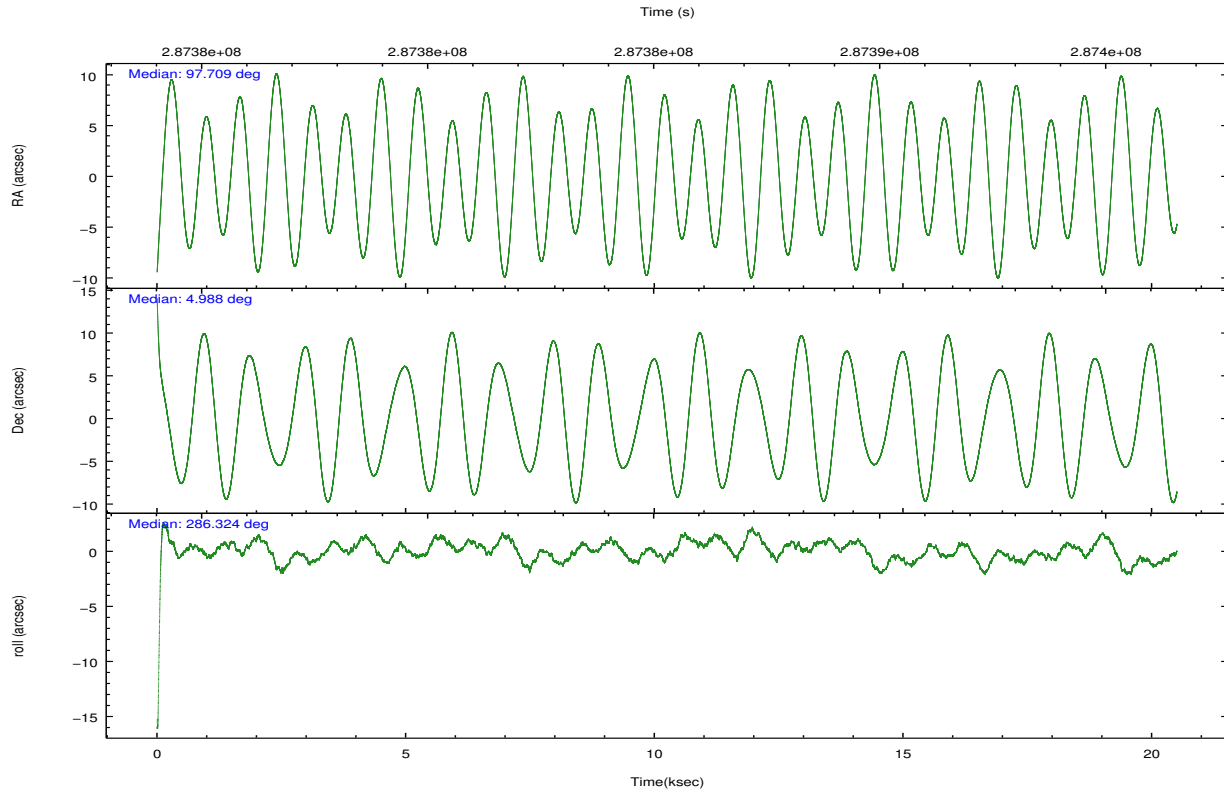
	ccd 0	ccd 1	ccd 2	ccd 3	ccd 6	ccd 7		ccd 0	ccd 1	ccd 2	ccd 3	ccd 6	ccd 7
level 1 events	157008	161424	178608	166520	184582	198109	grade 0 events	9683	11724	10230	9791	14547	9609
rejected events	135899	137173	157369	146020	156856	103406		6%	7%	5%	5%	7%	4%
rejected %	86%	84%	88%	87%	84%	52%	grade 1 events	102	110	123	110	132	225
								0%	0%	0%	0%	0%	0%
							grade 2 events	4483	4857	4455	3902	5173	19343
								2%	3%	2%	2%	2%	9%
							grade 3 events	2083	2234	1927	1968	2256	8748
								1%	1%	1%	1%	1%	4%
							grade 4 events	1986	2128	2035	2014	2187	8795
								1%	1%	1%	1%	1%	4%
							grade 5 events	5454	6069	5621	6385	6657	19487
								3%	3%	3%	3%	3%	9%
							grade 6 events	3655	4173	3420	3602	4472	52195
								2%	2%	1%	2%	2%	26%
							grade 7 events	129562	130129	150797	138748	149158	79707
								82%	80%	84%	83%	80%	40%

## 2.2 Compared Parameters

Parameter	Planned	Actual	Parameter	Planned	Actual
Instrument	ACIS	ACIS	Obspar format version number	7	7
Detector	ACIS-012367	ACIS-012367	Obspar file type	PREDICTED	ACTUAL
Grating	NONE	NONE	Obspar update status	NONE	UPDATED
Data mode	VFAINT	VFAINT	Number of optional ACIS chips dropped	0	0
Observation mode	POINTING	POINTING	On-chip summing requested	N	N
[deg] Pointing RA	97.689505	97.70955548497868	Subarray requested	NONE	NONE
[deg] Pointing Dec	5.007002	4.988083030683558	Alternating exposures requested	N	N
[deg] Pointing Roll	286.121820	286.3287485677985	[s] Primary exposure time	0.000000	3.2
[mm] SIM focus pos	-0.782348	-0.7809083437167272			
[mm] SIM defocus	0	0.001439871863259334			
[mm] SIM translation stage pos	-233.592463	-233.5874344608287			
[mm] SIM translation stage offset	0	-0.005018542100998502			
[s] Observation start time (MET)	287375209.184000	287373649.75268			
Observation start date	2007-02-09T02:25:44	2007-02-09T02:00:49			
[s] Observation end time (MET)	287395550.184000	287395783.09123			
Observation end date	2007-02-09T08:04:45	2007-02-09T08:09:43			
Read mode	TIMED	TIMED			

## 2.3 Aspect



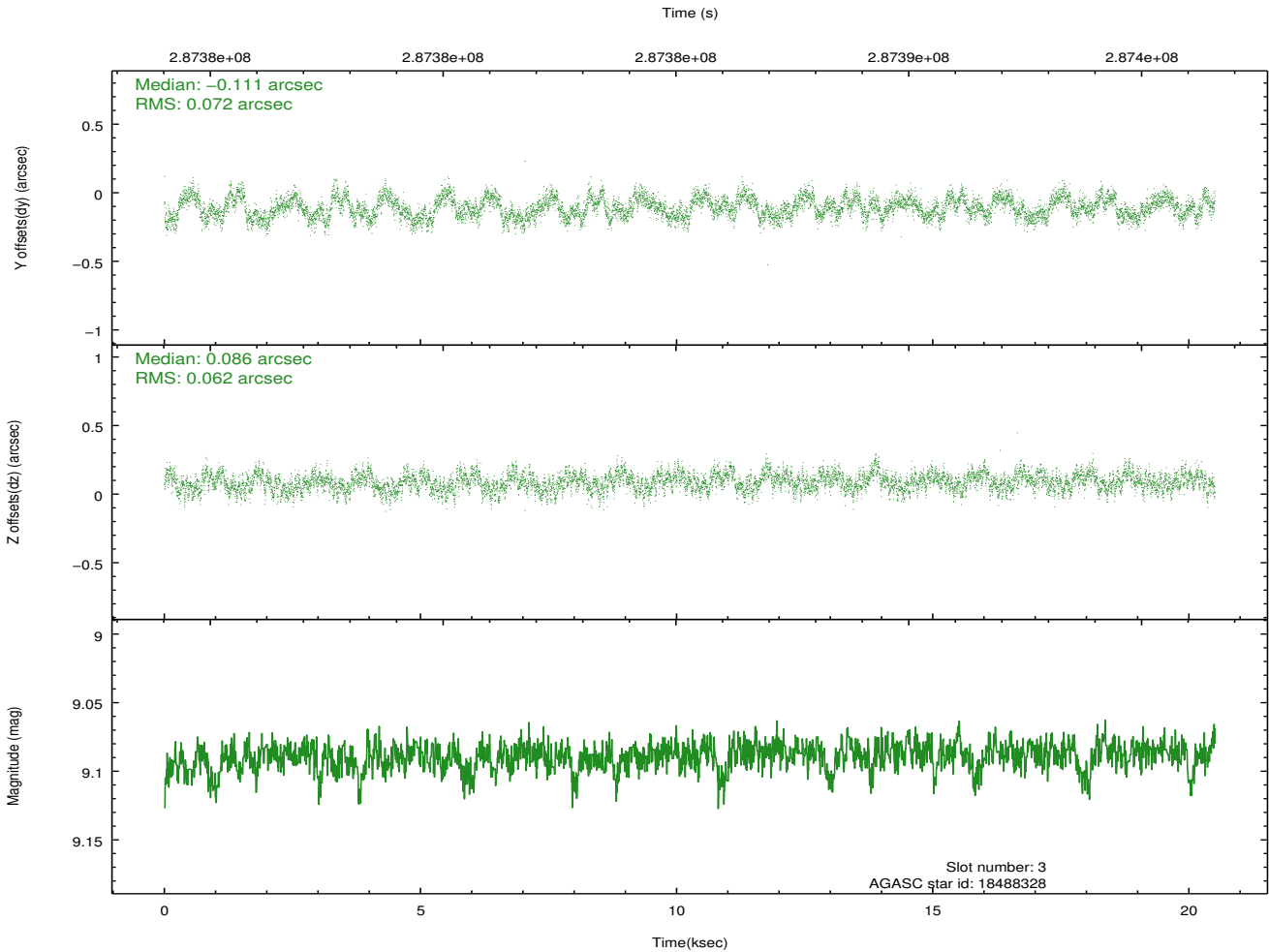
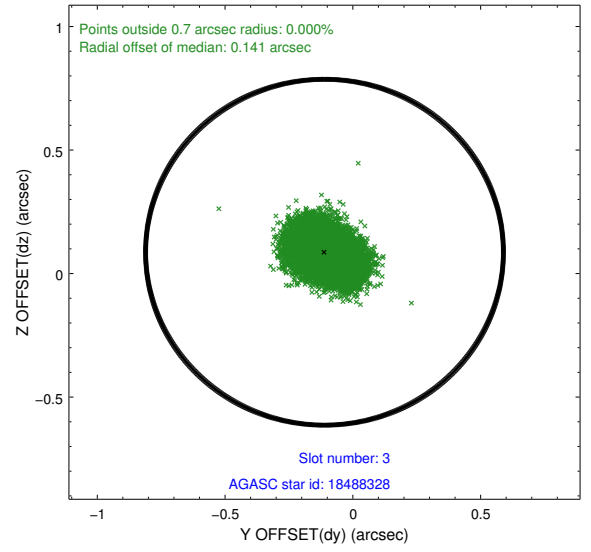
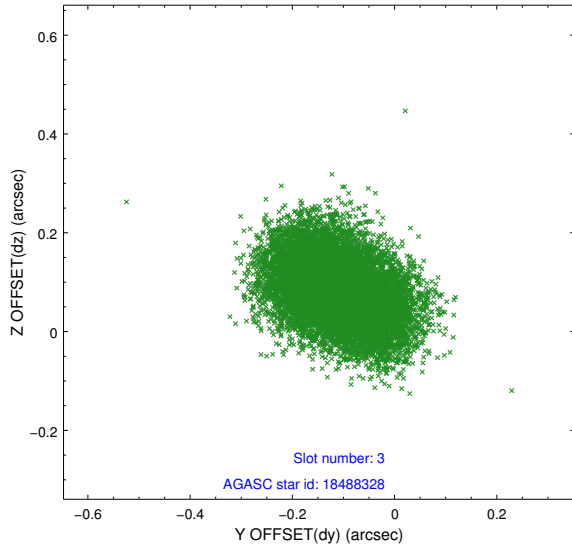


### Slot Statistics

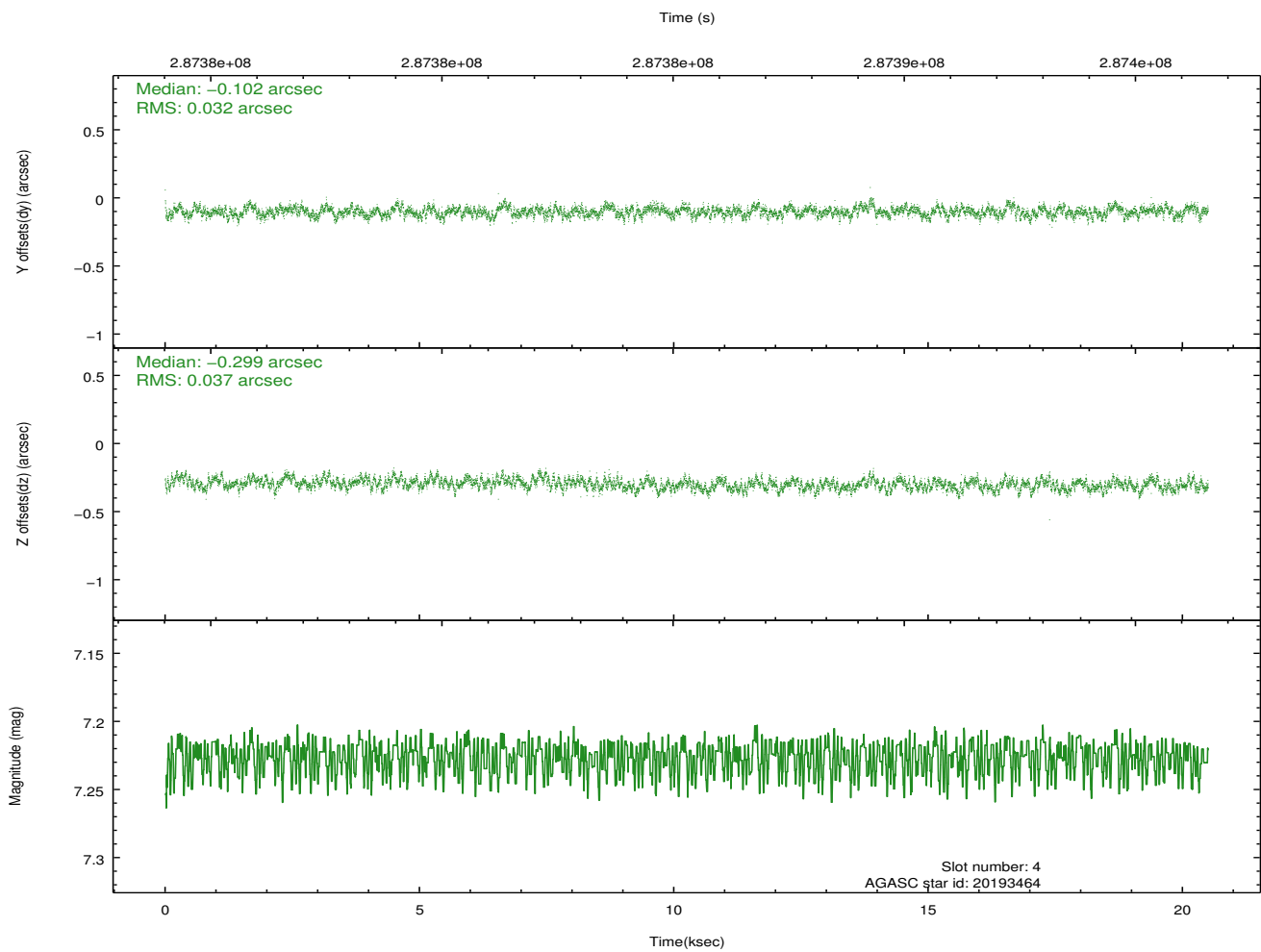
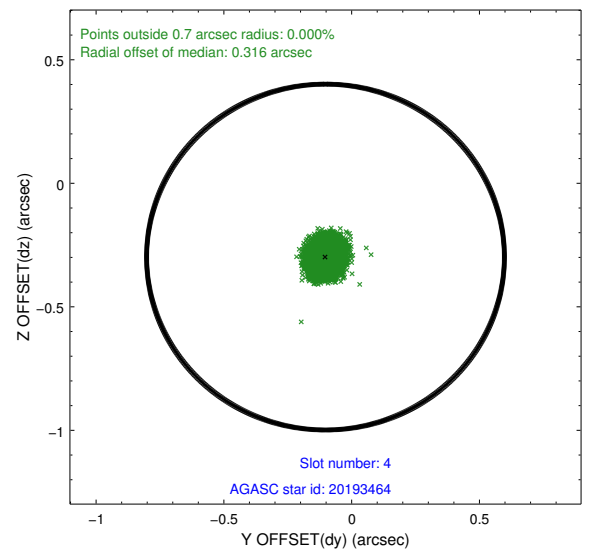
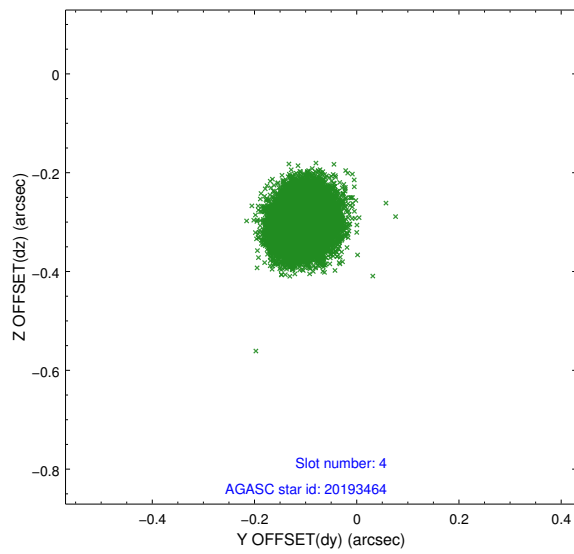
slot	status	id	mag	n_pts	med_dy	med_dz	dr1	dr2	ra	dec	mean_y	mean_z
0	FID	ACIS-I-1	7.24	5001	-0.016	0.017	0.009	0.016	0.000000	0.000000	925.86	-837.79
1	FID	ACIS-I-4	7.17	5002	0.200	0.020	0.012	0.019	0.000000	0.000000	2146.22	1061.93
2	FID	ACIS-I-5	7.22	5002	-0.283	0.034	0.011	0.019	0.000000	0.000000	-1822.18	1060.00
3	GUIDE	18488328	9.09	9997	-0.111	0.086	0.103	0.160	97.265467	5.515012	-2179.20	-951.70
4	GUIDE	20193464	7.23	10004	-0.102	-0.299	0.052	0.083	98.229775	5.396674	-811.09	2249.72
5	GUIDE	20194960	7.70	10003	0.060	0.062	0.056	0.089	97.758599	4.508135	1795.02	-259.74
6	GUIDE	18481912	9.42	9992	-0.115	-0.034	0.117	0.193	96.942596	5.349035	-1927.44	-2229.64
7	GUIDE	20196400	8.49	9929	0.273	0.190	0.080	0.128	98.462322	4.525449	2434.18	2183.93

## 2.4 Star Slots

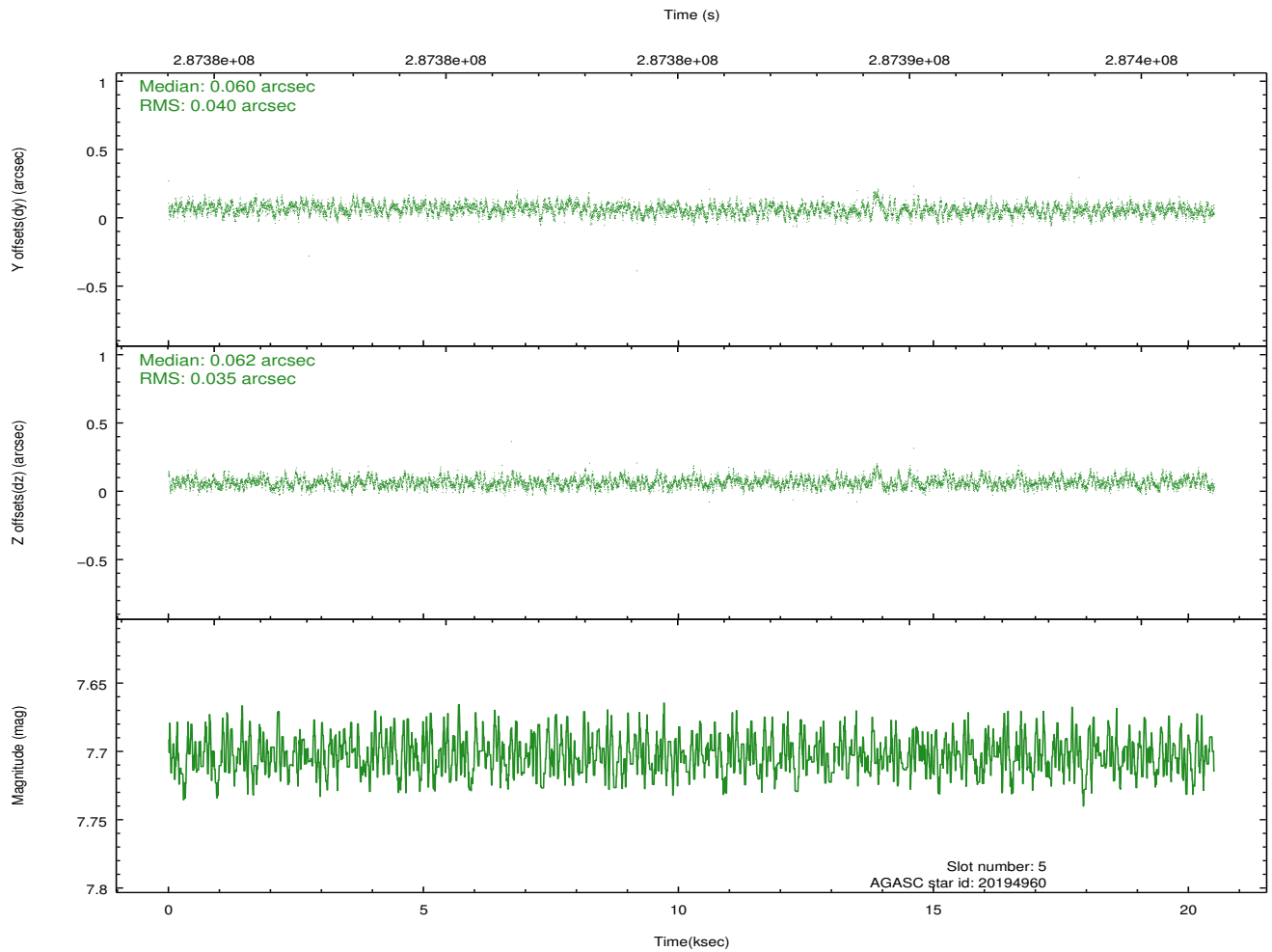
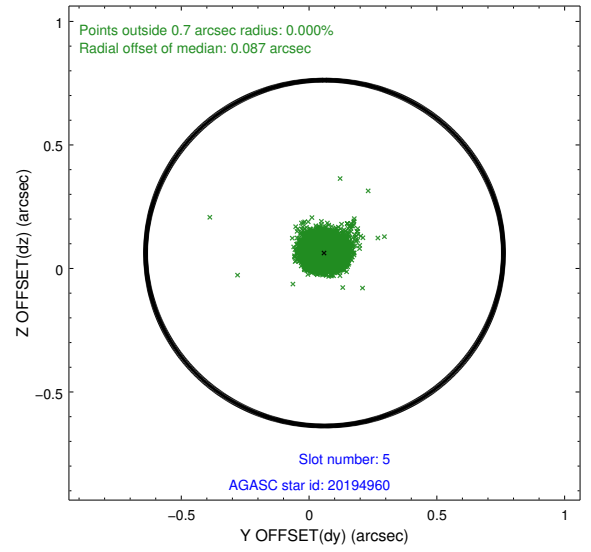
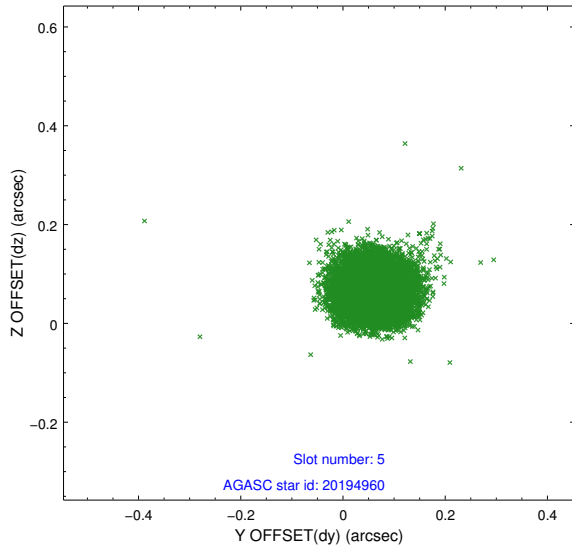
### 2.4.1 Slot 3



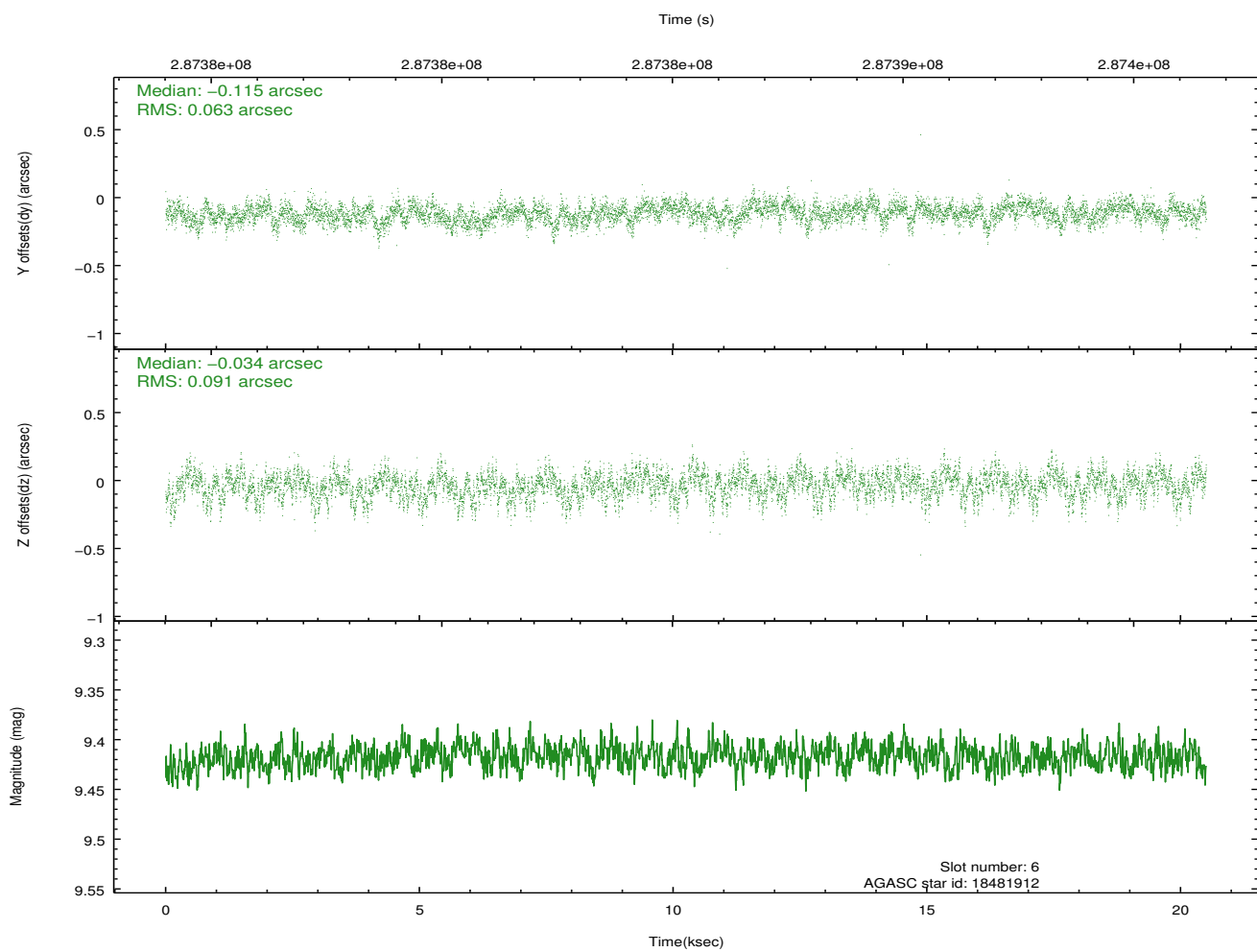
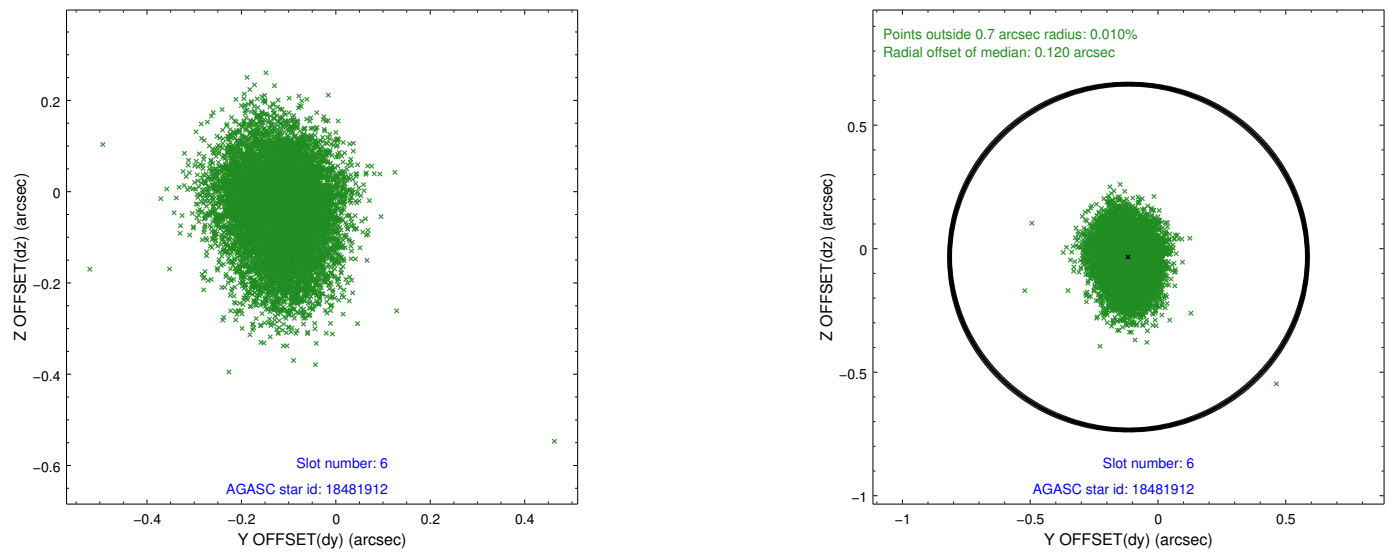
## 2.4.2 Slot 4



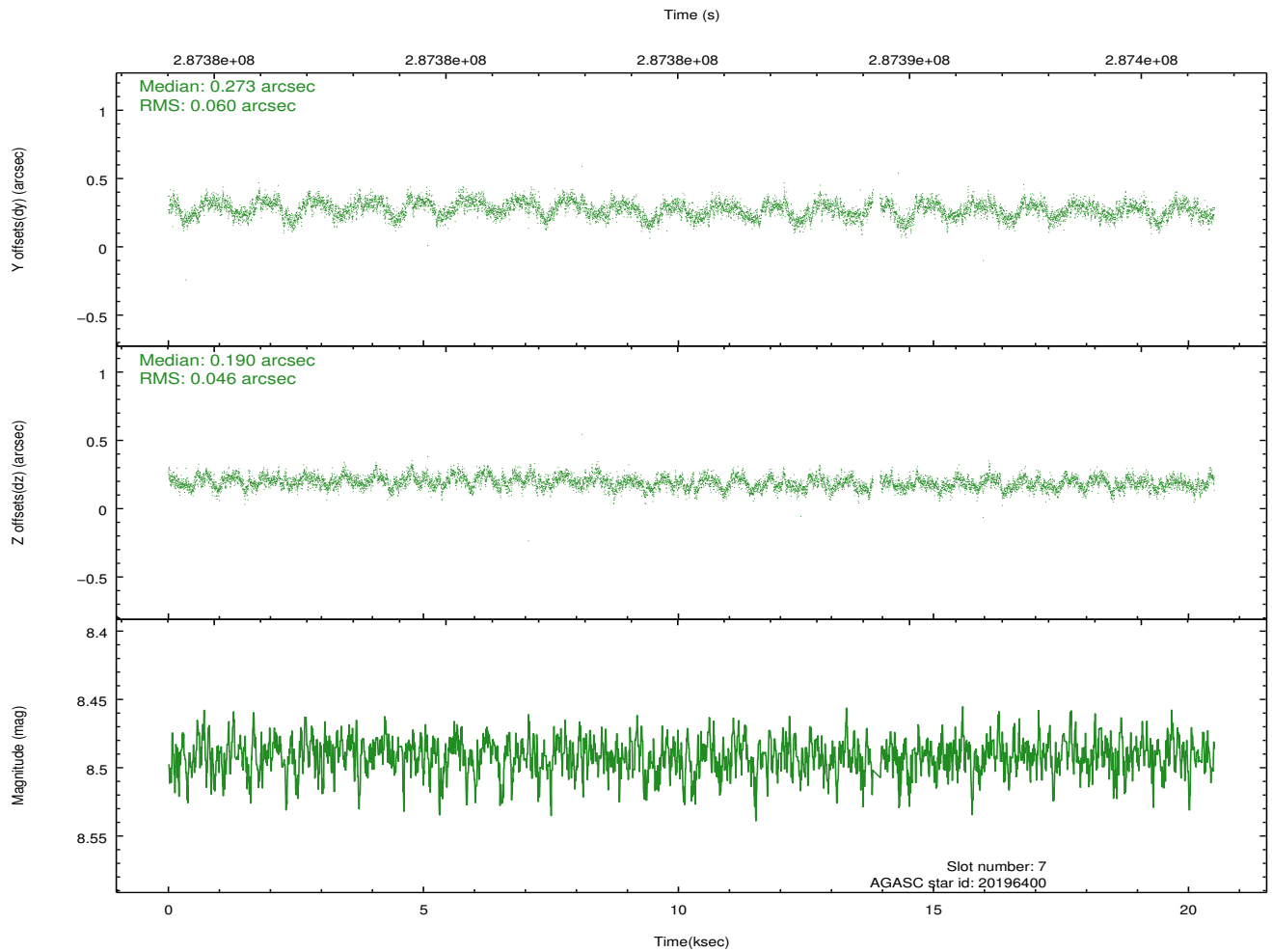
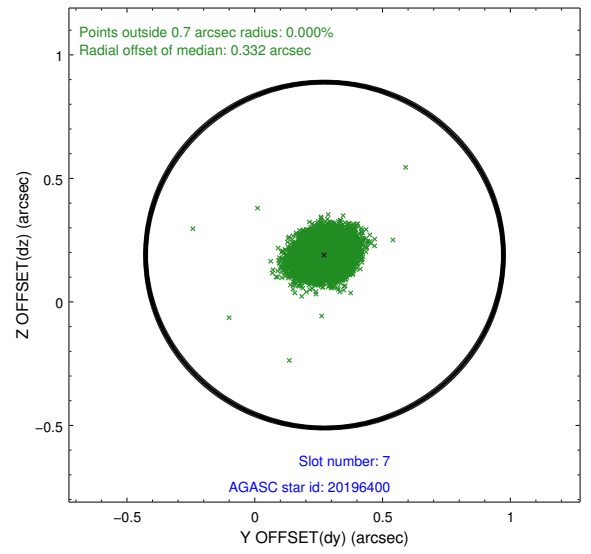
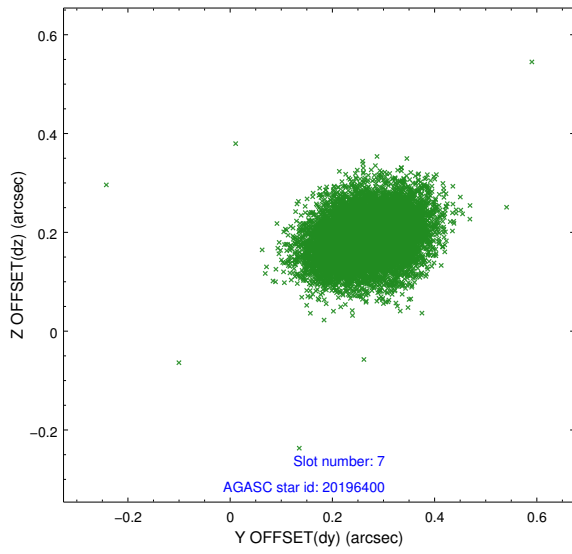
### 2.4.3 Slot 5



## 2.4.4 Slot 6

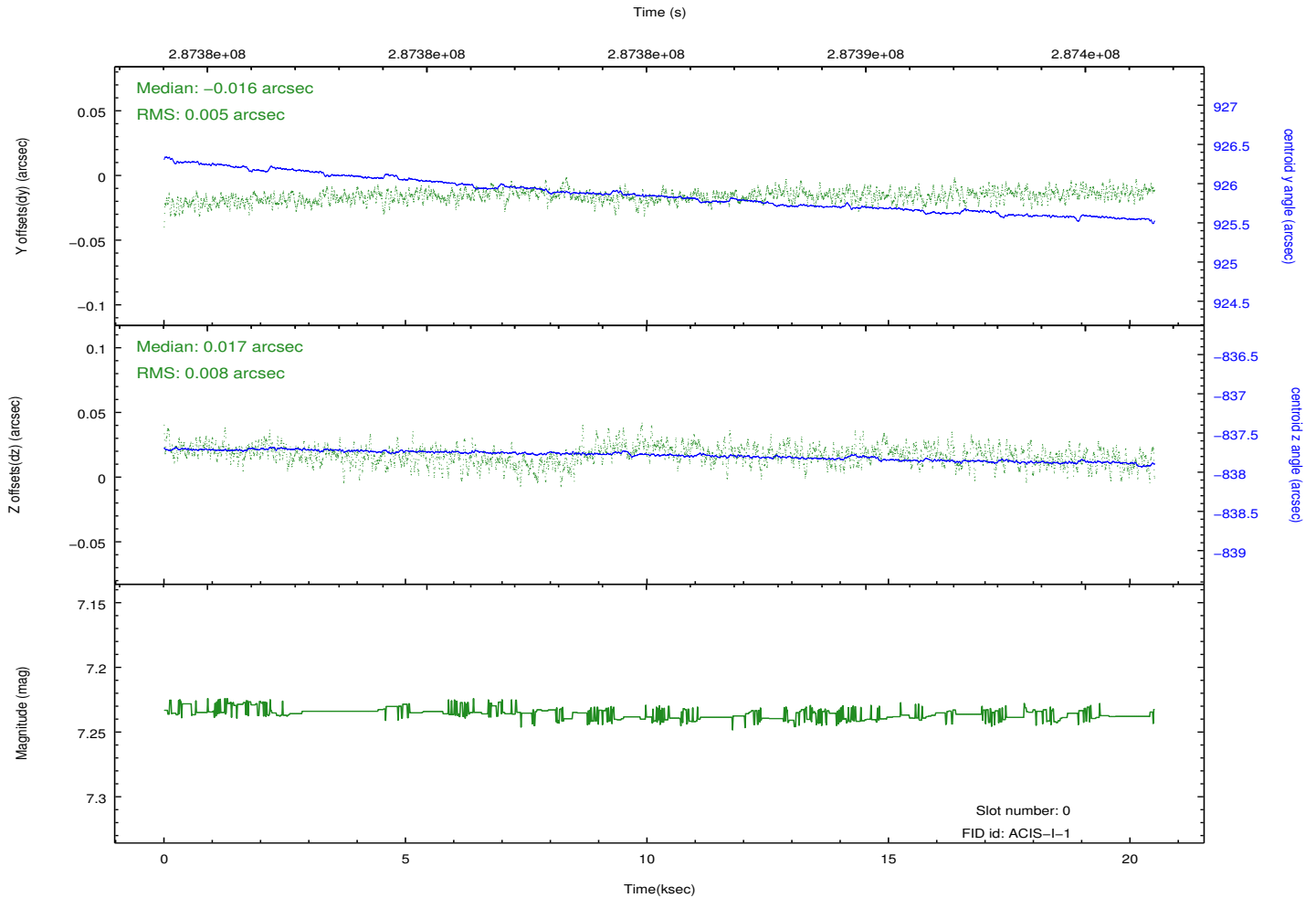
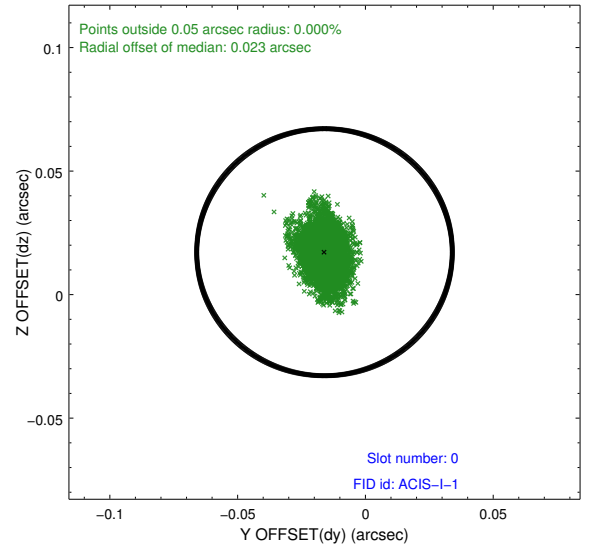
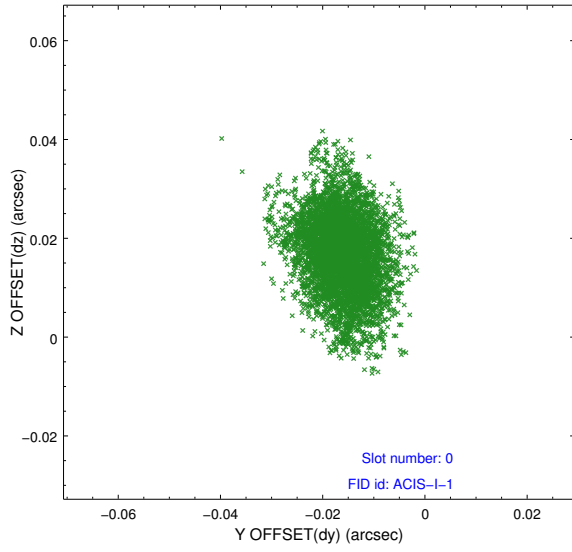


### 2.4.5 Slot 7

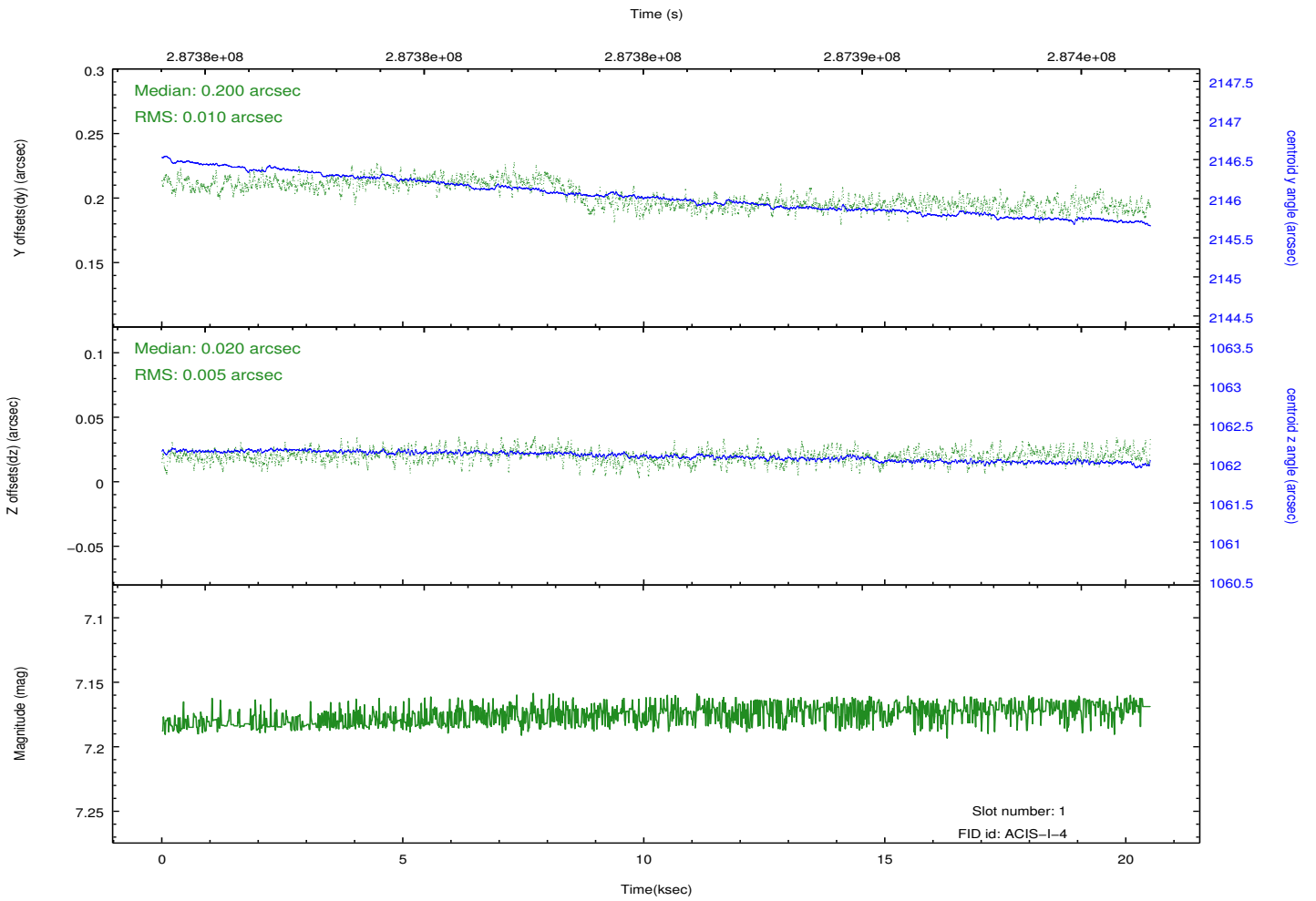
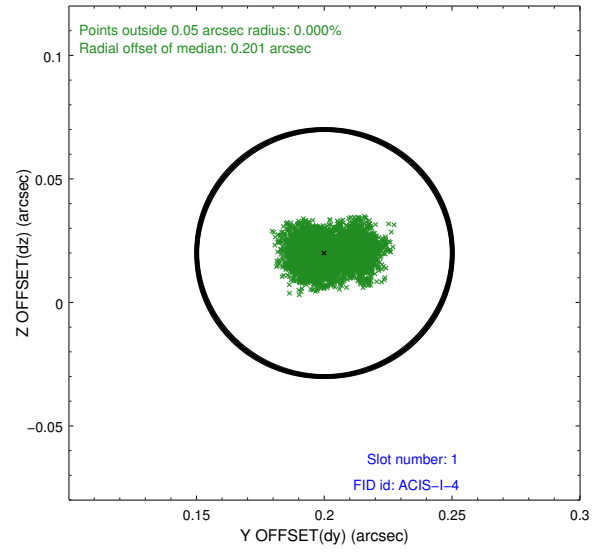
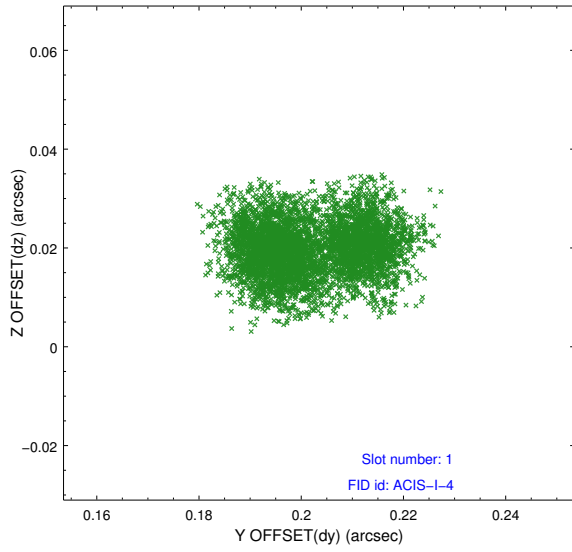


## 2.5 FID Slots

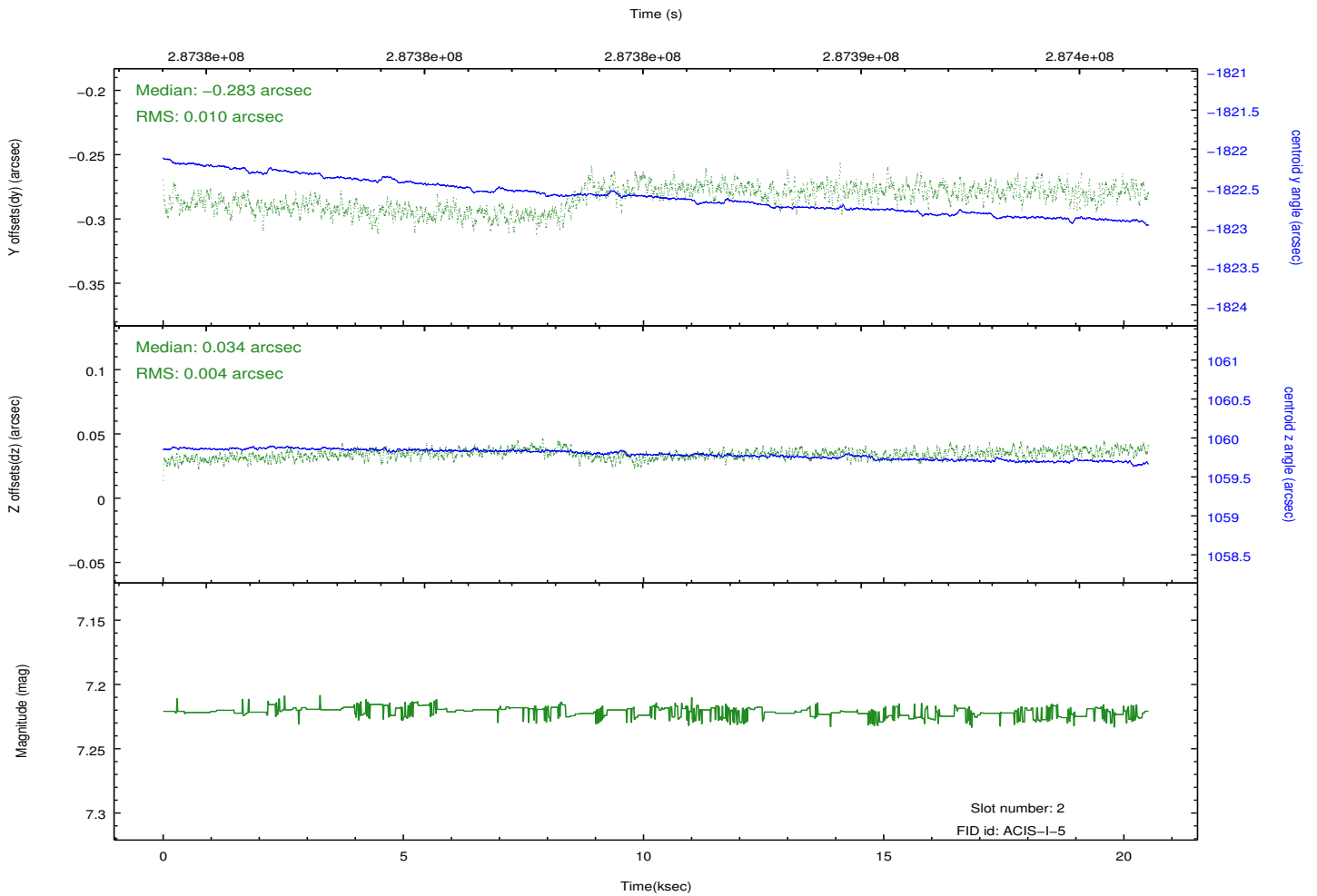
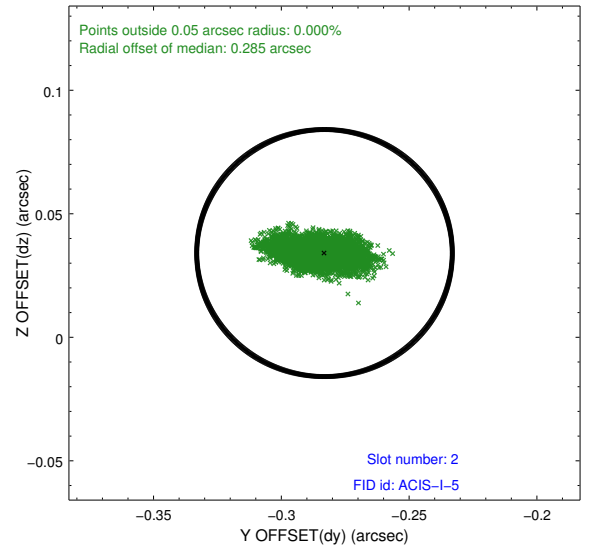
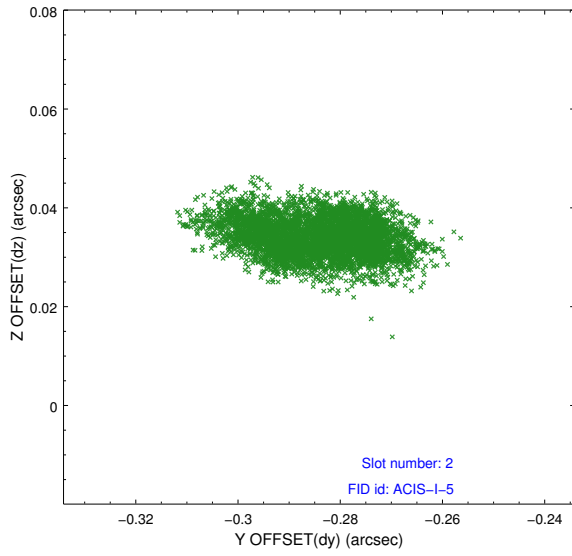
### 2.5.1 Slot 0



## 2.5.2 Slot 1



### 2.5.3 Slot 2



# A Summary

## A.1 Status

V&V Scientist	Beth Sundheim
V&V Date (YYYY-MM-DD)	2012.04.20
V&V Edition	1
V&V Disposition and Status	OK
V&V Charge Time	20.4894769

## A.2 Comments