

# V&V Reference Report

## L2 ASCDS Version : 8.4.3.1

Observation 8494 - L2 Version 3  
Chandra X-Ray Center

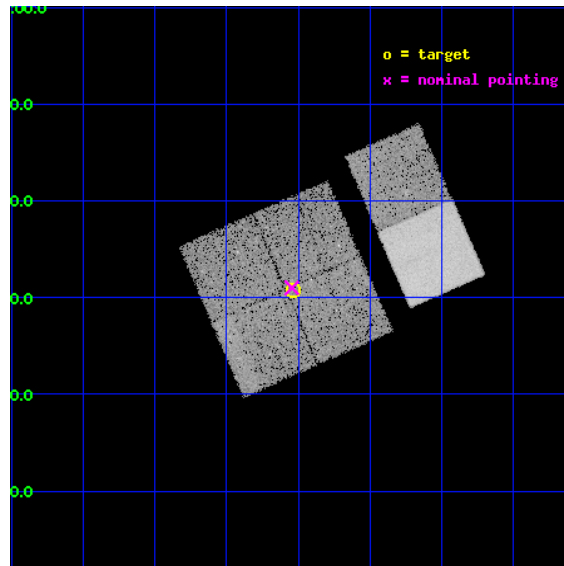
L2 Processing Date : Apr 15 2012

## Contents

<b>1</b>	<b>Front</b>	<b>2</b>
<b>2</b>	<b>OBI</b>	<b>3</b>
2.1	OBI . . . . .	3
2.1.1	Images . . . . .	3
2.1.2	Bias . . . . .	3
2.1.3	Parameters . . . . .	4
2.1.4	Events . . . . .	4
2.2	Compared Parameters . . . . .	5
2.3	Aspect . . . . .	6
2.4	Star Slots . . . . .	9
2.4.1	Slot 3 . . . . .	9
2.4.2	Slot 4 . . . . .	10
2.4.3	Slot 5 . . . . .	11
2.4.4	Slot 6 . . . . .	12
2.4.5	Slot 7 . . . . .	13
2.5	FID Slots . . . . .	14
2.5.1	Slot 0 . . . . .	14
2.5.2	Slot 1 . . . . .	15
2.5.3	Slot 2 . . . . .	16
<b>A</b>	<b>Summary</b>	<b>17</b>
A.1	Status . . . . .	17
A.2	Comments . . . . .	17

# 1 Front

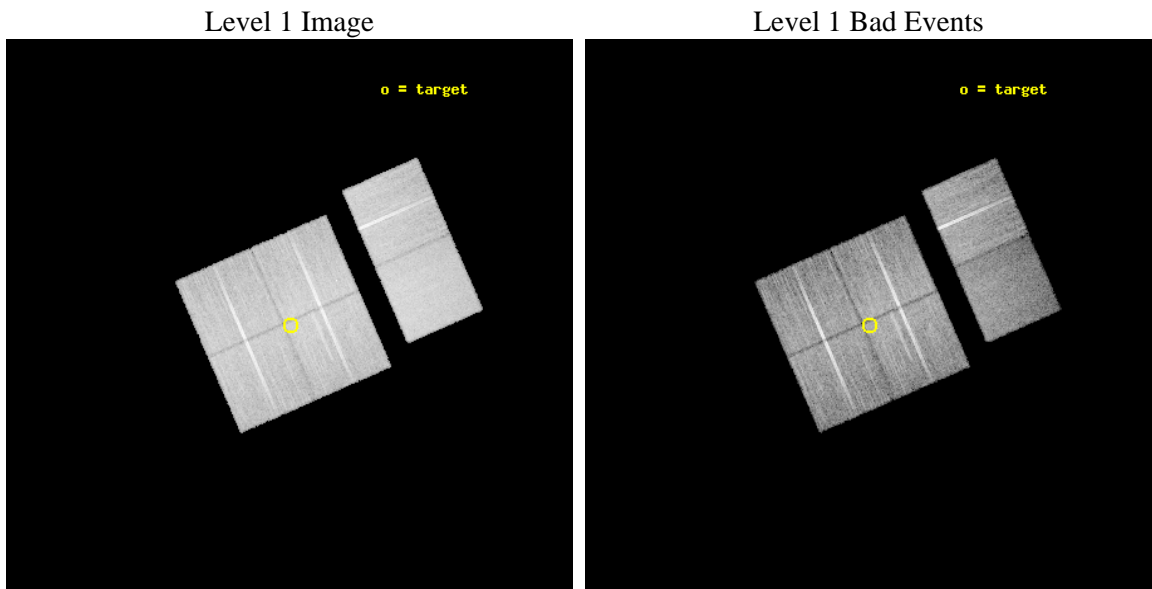
seq_num	900663	Sequence number
obs_id	8494	Observation id
title	THE CHANDRA-COSMOS SURVEY	Proposal title
observer	Dr. Martin Elvis	Principal investigator
object	C-COSMOS1-4	Source name
dtcycle	0	&#160
cycle	P	events from which exps? Prim/Second/Both
ra_targ	150.132725	Observer's specified target RA [deg]
dec_targ	2.513478	Observer's specified target Dec [deg]
ra_nom	150.13605694867	Nominal RA [deg]
dec_nom	2.5167779940294	Nominal Dec [deg]
roll_nom	66.408548256168	Nominal Roll [deg]
revision	3	Processing version of data
ontime	21033.599921703	Sum of GTIs [s]
livetime	20767.259814581	Livetime [s]
ontime0	21033.599921703	Sum of GTIs [s]
ontime1	21030.358921468	Sum of GTIs [s]
ontime2	21033.599921703	Sum of GTIs [s]
ontime3	21033.599921703	Sum of GTIs [s]
ontime6	21033.599921703	Sum of GTIs [s]
ontime7	21033.599921703	Sum of GTIs [s]
l2events	129154	Number of level 2 events



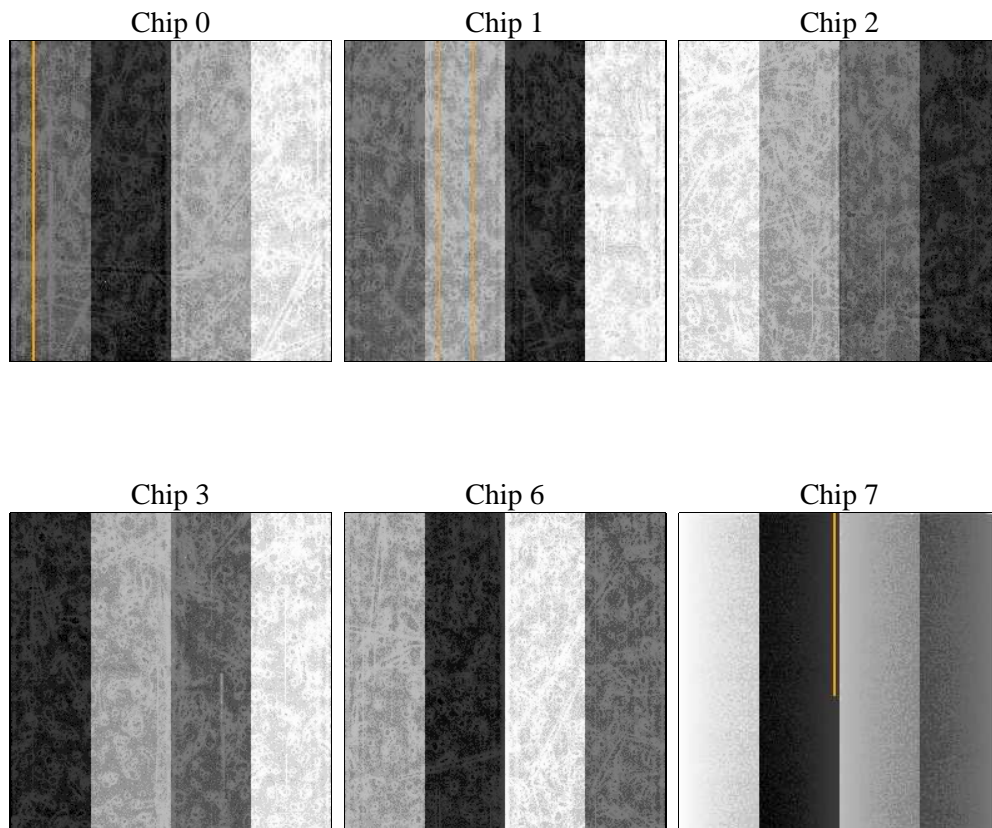
## 2 OBI

### 2.1 OBI

#### 2.1.1 Images



#### 2.1.2 Bias



### 2.1.3 Parameters

obi_num	3	Obi number	sched_exp_time	21000.000000	[s] Scheduled observation exposure time
ascdsver	8.4.3.1	Processing system revision	ontime	21033.599921703	Sum of GTIs [s]
caldsver	4.4.9	&#160	ontime0	21033.599921703	Sum of GTIs [s]
date	2012-04-15T14:45:00	Date and time of file creation	ontime1	21030.358921468	Sum of GTIs [s]
revision	3	Processing version of data	ontime2	21033.599921703	Sum of GTIs [s]
			ontime3	21033.599921703	Sum of GTIs [s]
			ontime6	21033.599921703	Sum of GTIs [s]
			ontime7	21033.599921703	Sum of GTIs [s]
			l1events	825203	Number of level 1 events

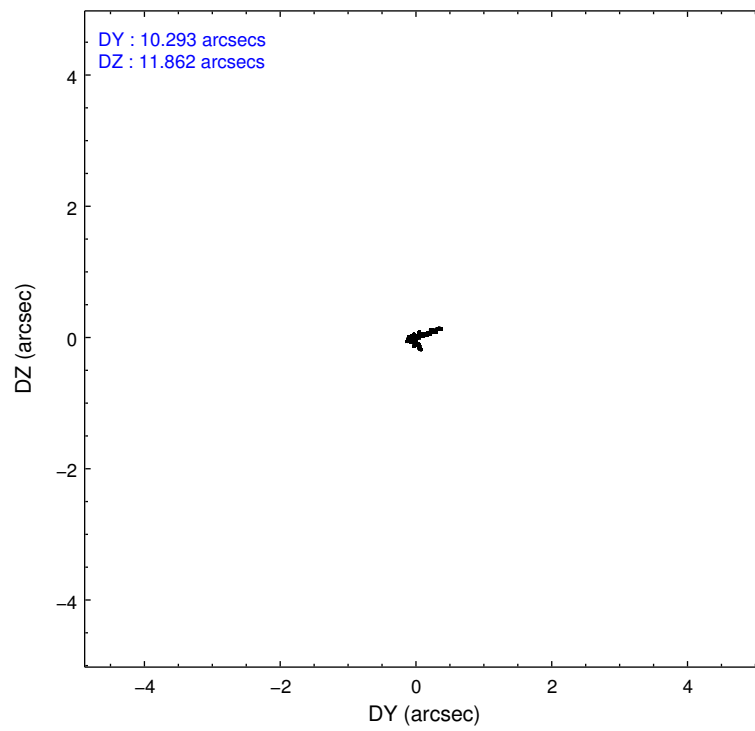
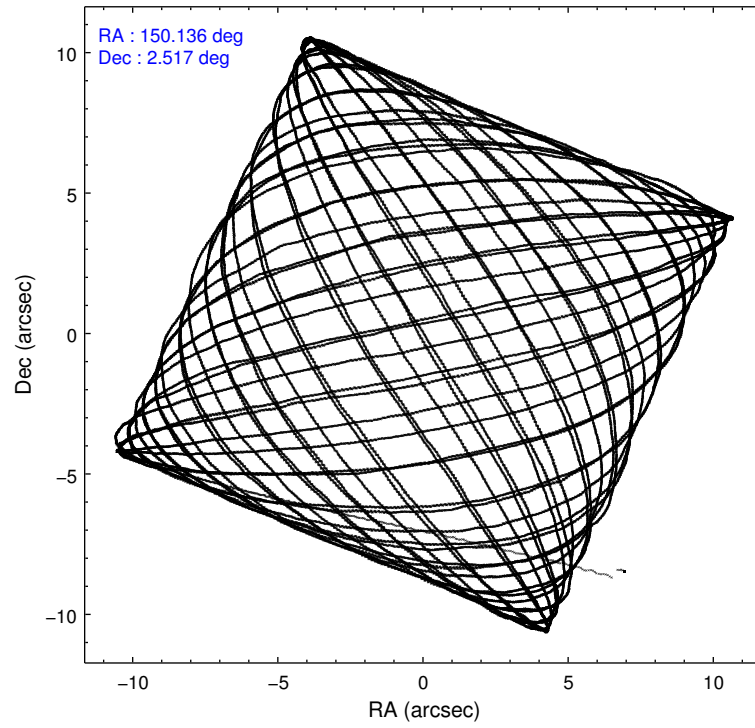
### 2.1.4 Events

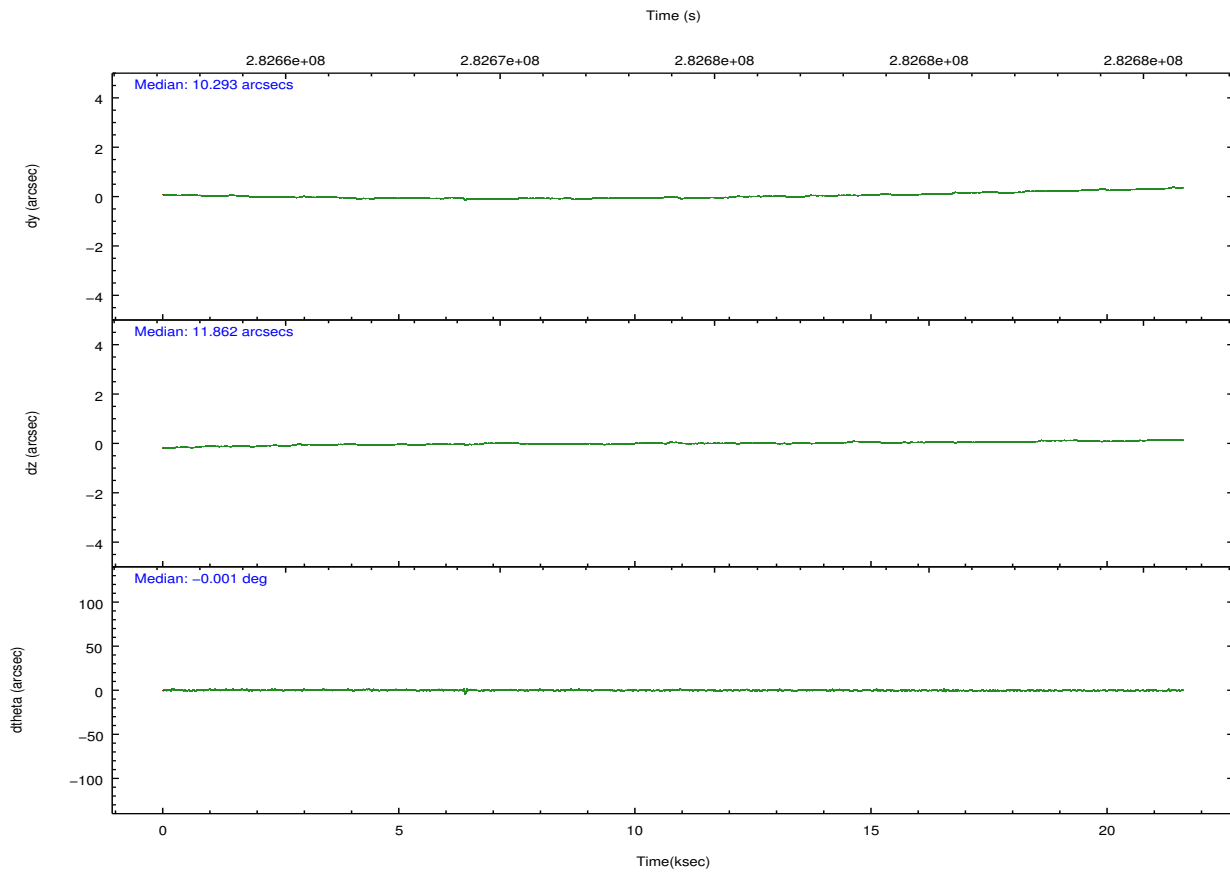
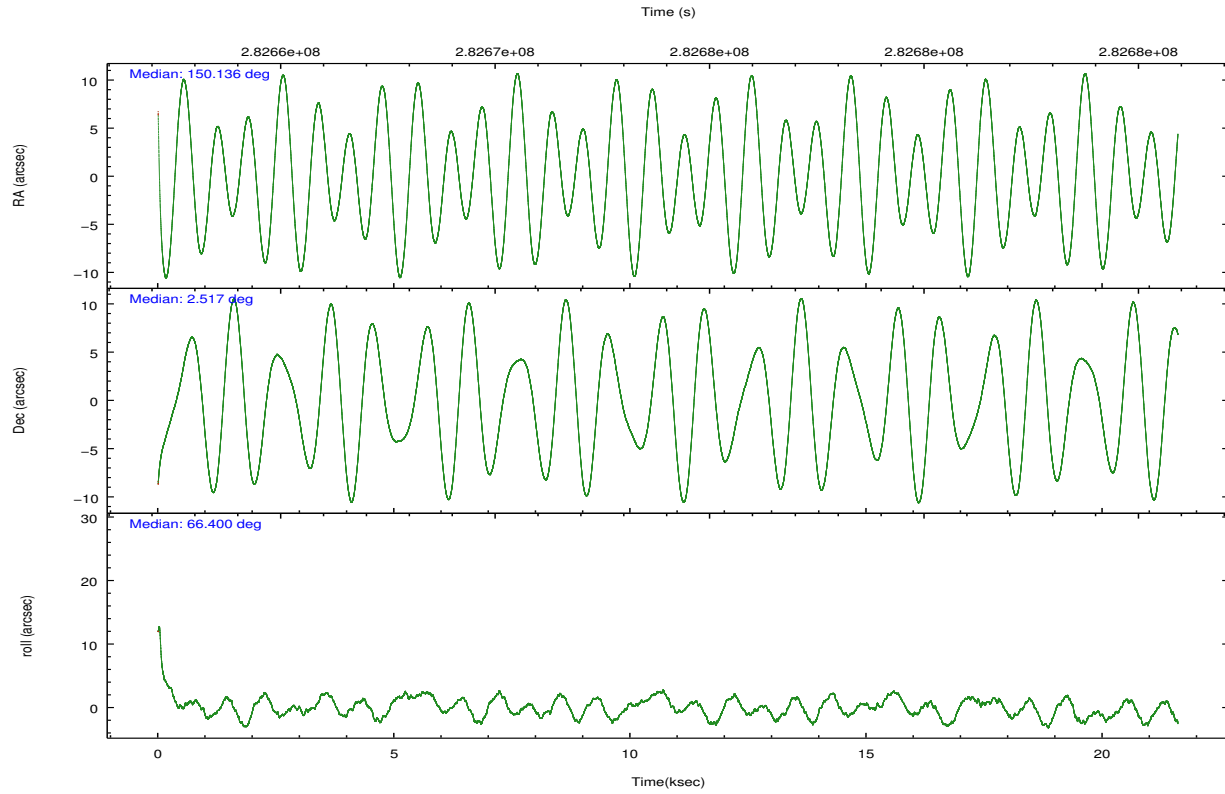
	ccd 0	ccd 1	ccd 2	ccd 3	ccd 6	ccd 7		ccd 0	ccd 1	ccd 2	ccd 3	ccd 6	ccd 7
level 1 events	126965	125710	140003	136878	141554	154093	grade 0 events	5424	5927	5727	4945	5547	6777
rejected events	112548	109695	125460	123518	126348	82869		4%	4%	4%	3%	3%	4%
rejected %	88%	87%	89%	90%	89%	53%	grade 1 events	73	64	69	76	78	194
								0%	0%	0%	0%	0%	0%
							grade 2 events	3381	3547	3364	2853	3398	14651
								2%	2%	2%	2%	2%	9%
							grade 3 events	1576	1654	1390	1514	1621	6647
								1%	1%	0%	1%	1%	4%
							grade 4 events	1371	1734	1530	1430	1505	6518
								1%	1%	1%	1%	1%	4%
							grade 5 events	4658	5209	4429	5512	5631	16039
								3%	4%	3%	4%	3%	10%
							grade 6 events	2668	3158	2539	2628	3137	36648
								2%	2%	1%	1%	2%	23%
							grade 7 events	107814	104417	120955	117920	120637	66619
								84%	83%	86%	86%	85%	43%

## 2.2 Compared Parameters

Parameter	Planned	Actual	Parameter	Planned	Actual
Instrument	ACIS	ACIS	Obspar format version number	7	7
Detector	ACIS-012367	ACIS-012367	Obspar file type	PREDICTED	ACTUAL
Grating	NONE	NONE	Obspar update status	NONE	UPDATED
Data mode	VFAINT	VFAINT	CCD I0 on	Y	Y
Observation mode	POINTING	POINTING	CCD I1 on	Y	Y
[deg] Pointing RA	150.139265	150.1360569486736	CCD I2 on	Y	Y
[deg] Pointing Dec	2.489467	2.516777994029391	CCD I3 on	Y	Y
[deg] Pointing Roll	66.199716	66.40854825616753	CCD S0 on	N	N
[mm] SIM focus pos	-0.782348	-0.7809083437167272	CCD S1 on	N	N
[mm] SIM defocus	0	0.001439871863259334	CCD S2 on	O1	Y
[mm] SIM translation stage pos	-233.592463	-233.5874344608287	CCD S3 on	O2	Y
[mm] SIM translation stage offset	0	-0.005018542100998502	CCD S4 on	N	N
[s] Observation start time (MET)	282663840.184000	282662564.00441	CCD S5 on	N	N
Observation start date	2006-12-16T13:42:55	2006-12-16T13:22:44	Number of optional ACIS chips dropped	0	0
[s] Observation end time (MET)	282684840.184000	282685613.1805	On-chip summing requested	N	N
Observation end date	2006-12-16T19:32:55	2006-12-16T19:46:53	Subarray requested	NONE	NONE
Read mode	TIMED	TIMED	Alternating exposures requested	N	N
			[s] Primary exposure time	0.000000	3.2

## 2.3 Aspect



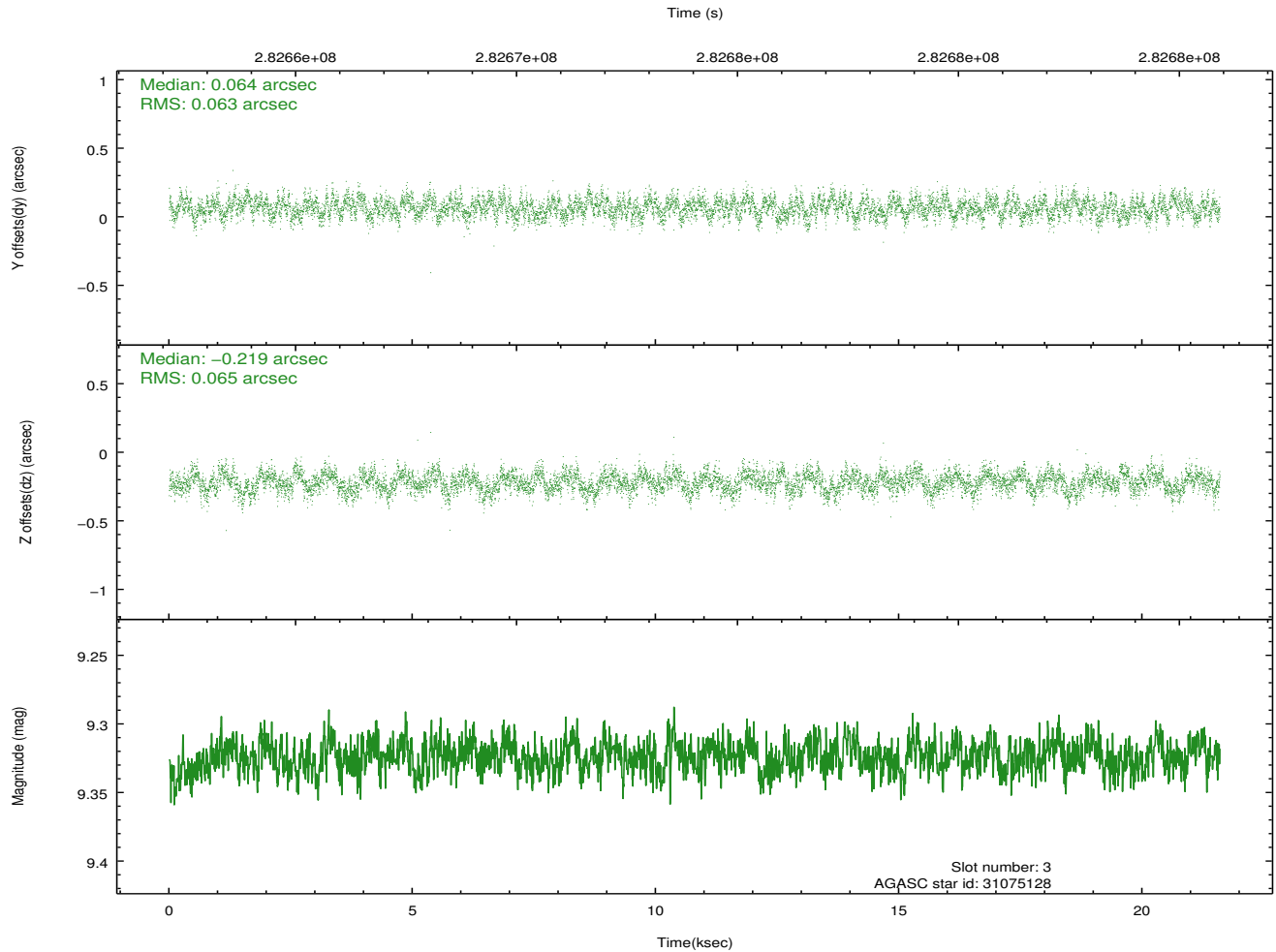
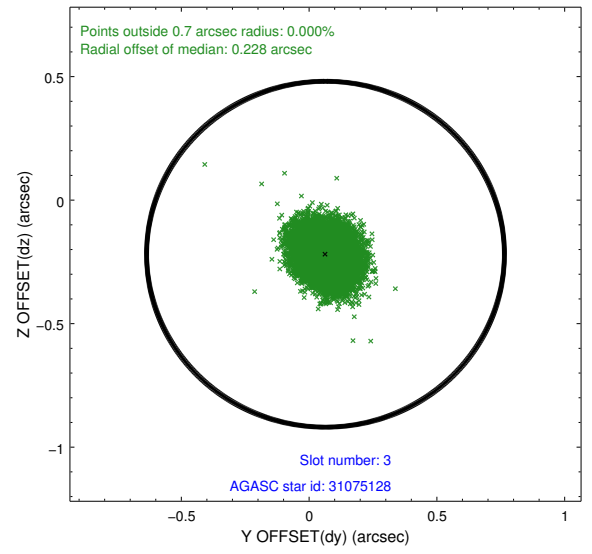
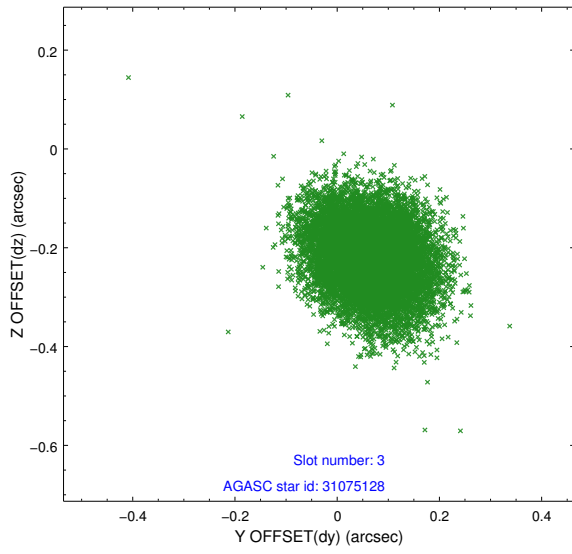


### Slot Statistics

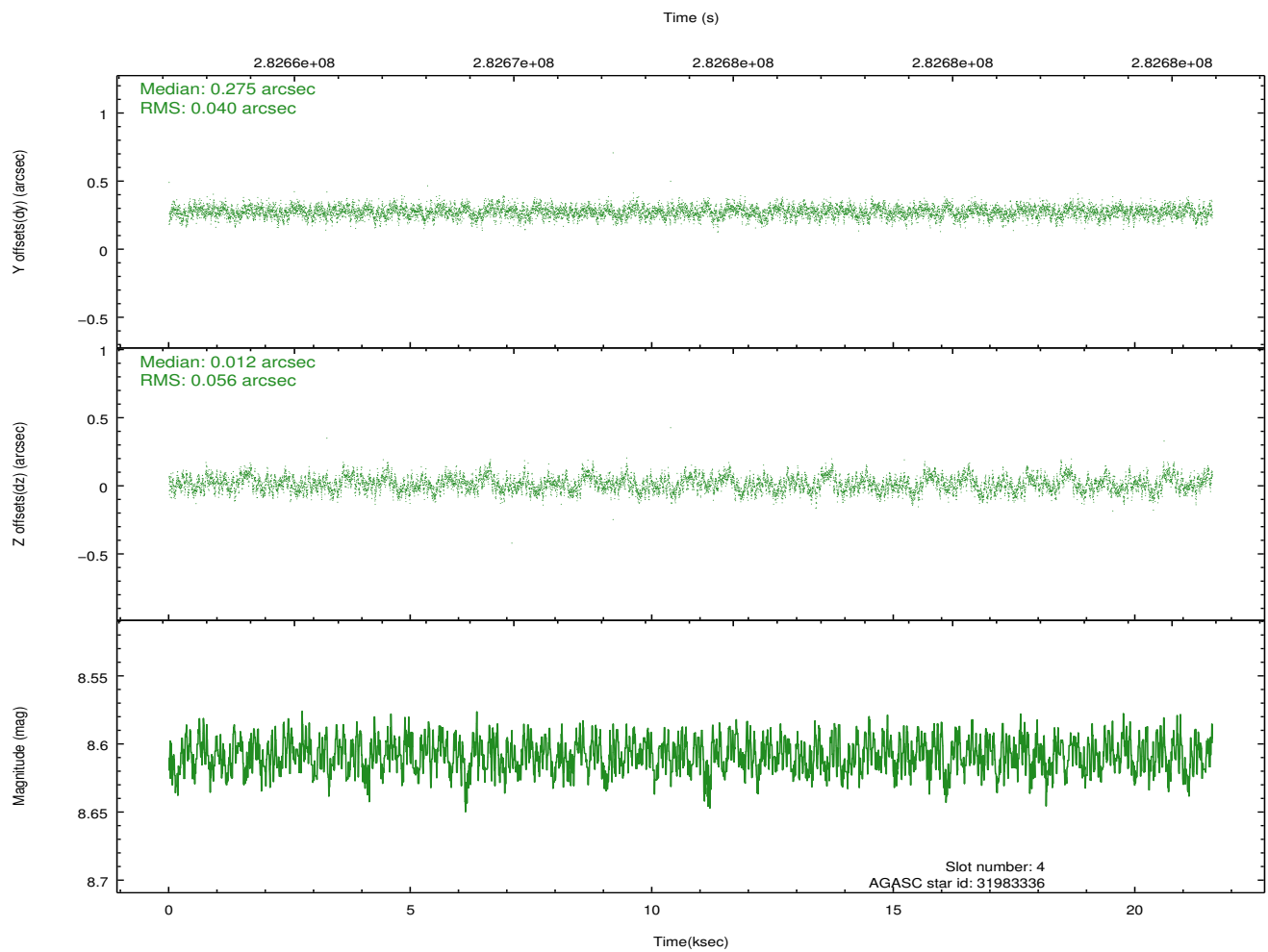
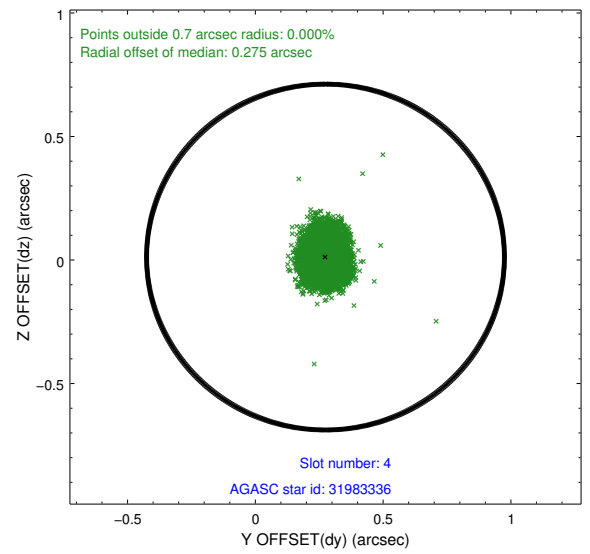
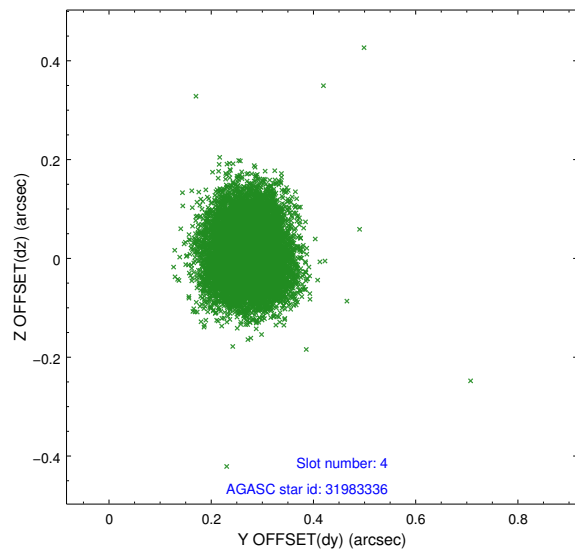
slot	status	id	mag	n_pts	med_dy	med_dz	dr1	dr2	ra	dec	mean_y	mean_z
0	FID	ACIS-I-1	7.24	5268	0.074	-0.049	0.007	0.012	0.000000	0.000000	929.31	-835.45
1	FID	ACIS-I-5	7.23	5267	-0.226	0.069	0.007	0.011	0.000000	0.000000	-1818.96	1062.14
2	FID	ACIS-I-6	7.24	5268	0.062	0.050	0.009	0.015	0.000000	0.000000	394.73	1706.76
3	GUIDE	31075128	9.32	10535	0.064	-0.219	0.097	0.154	149.584516	2.364347	-1216.80	1643.88
4	GUIDE	31983336	8.61	10531	0.275	0.012	0.073	0.118	150.429924	2.291234	-230.20	-1244.28
5	GUIDE	32374896	9.21	10530	-0.177	0.122	0.094	0.152	150.682269	2.512794	865.64	-1752.63
6	GUIDE	32387968	9.21	10533	-0.261	-0.183	0.100	0.164	150.106347	3.119099	2026.31	1023.09
7	GUIDE	31983224	9.46	10518	0.099	0.270	0.113	0.180	150.543757	1.869948	-1452.14	-2231.31

## 2.4 Star Slots

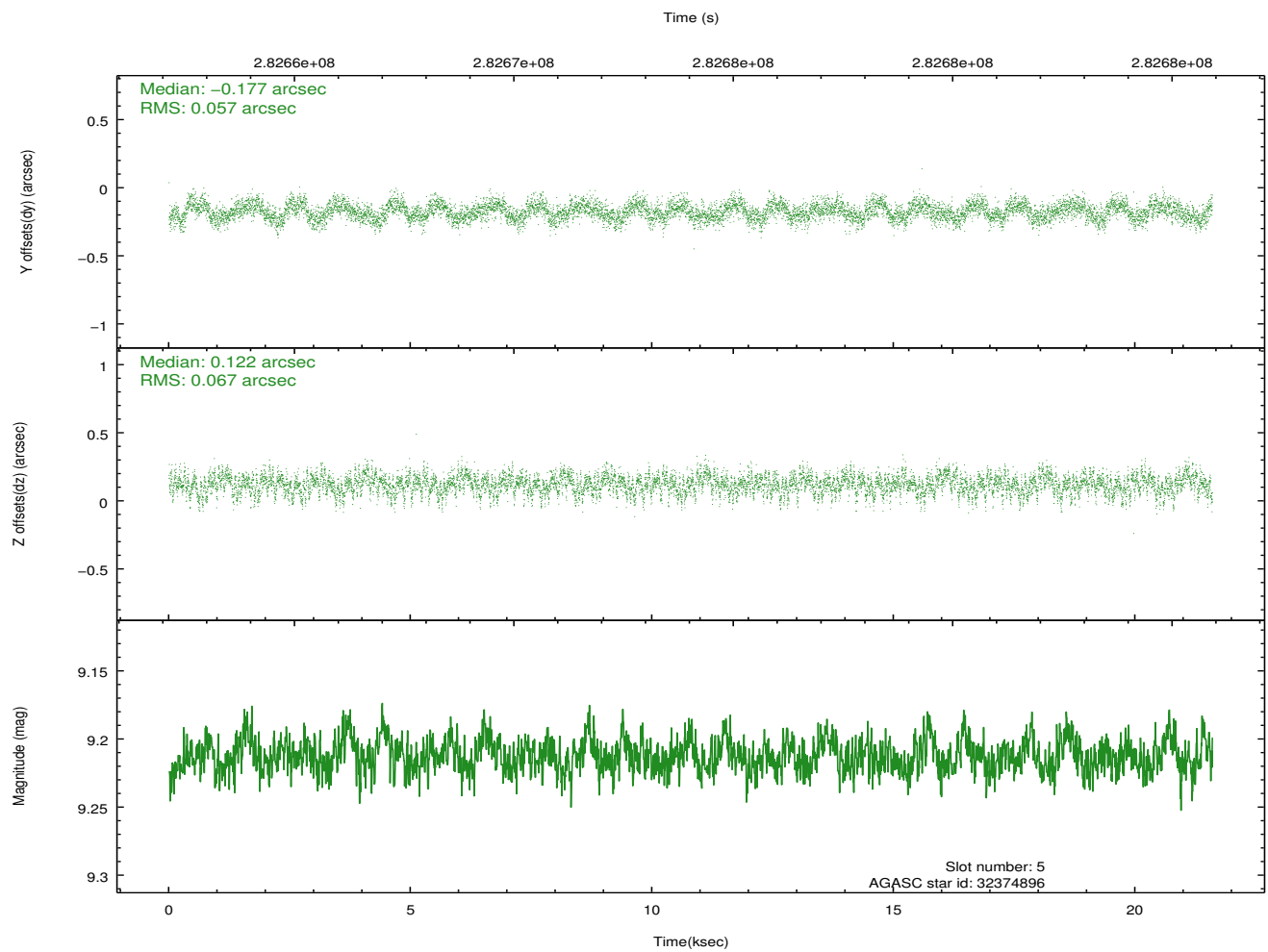
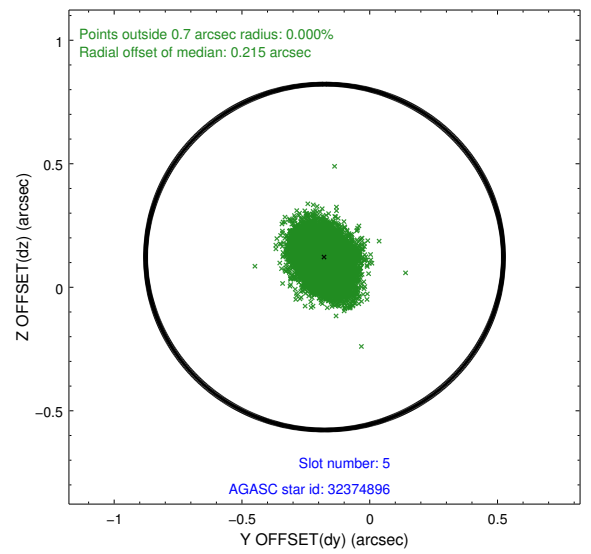
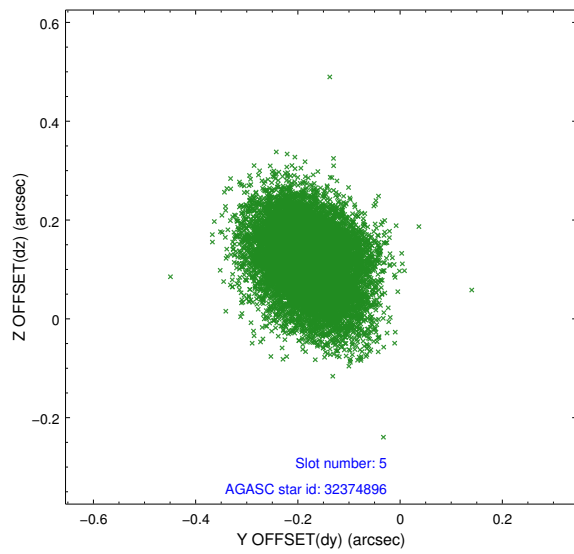
### 2.4.1 Slot 3



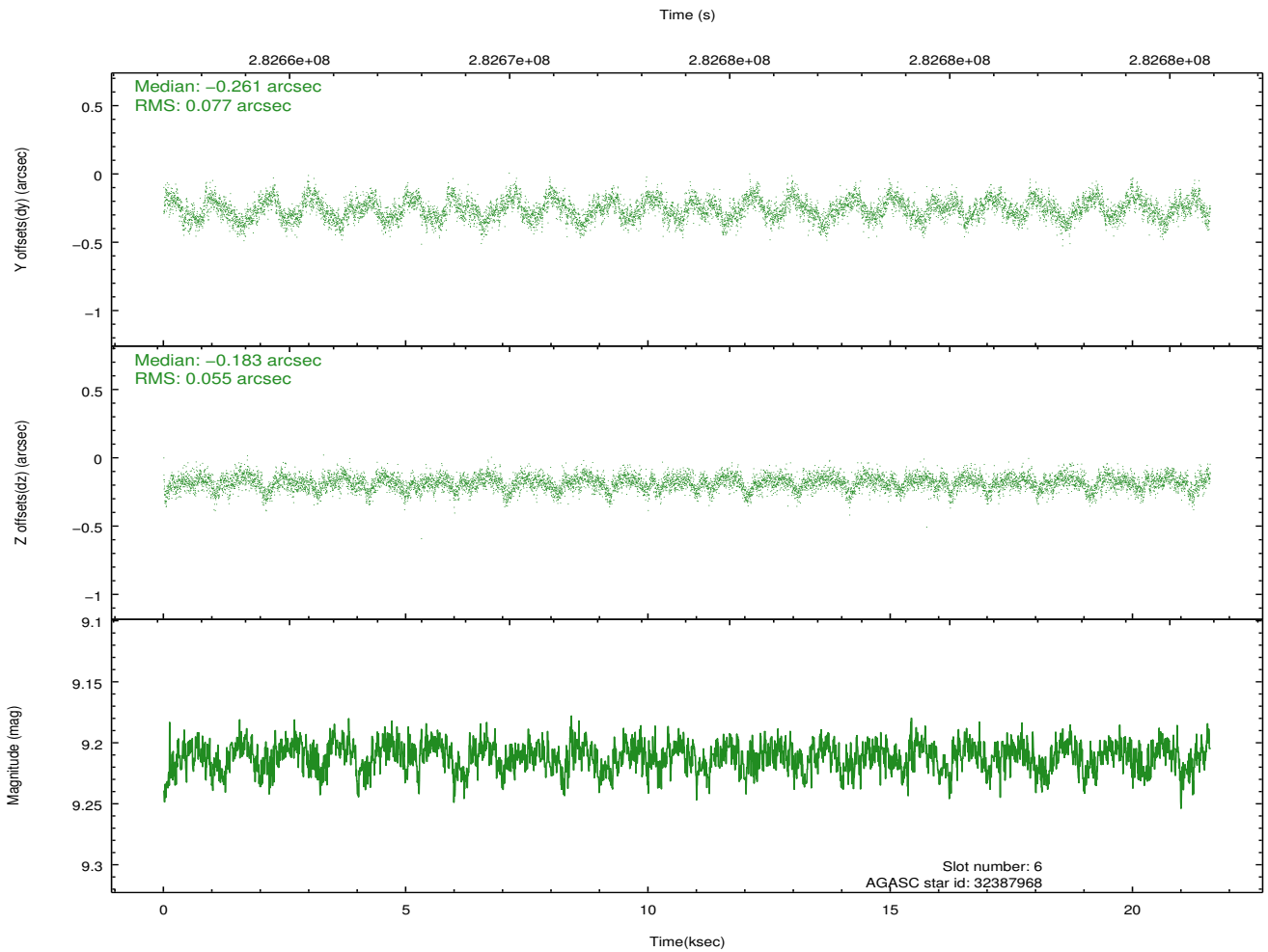
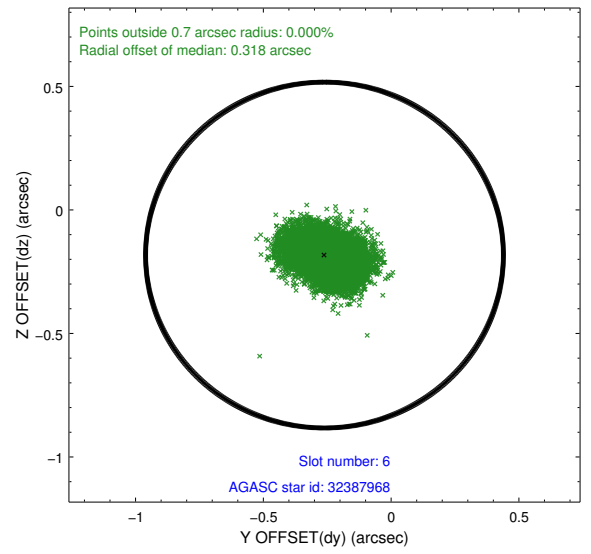
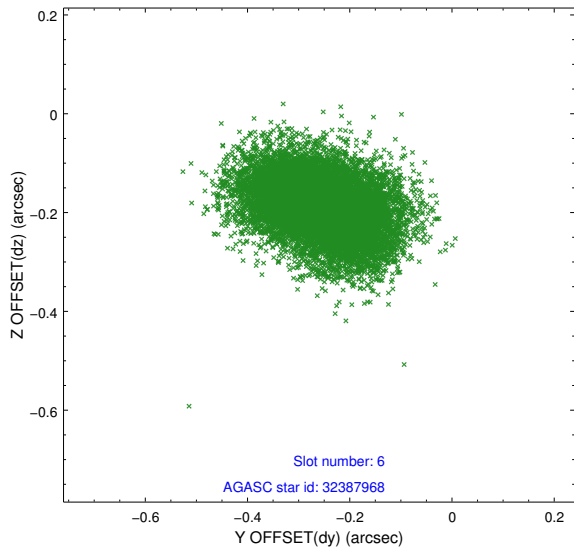
## 2.4.2 Slot 4



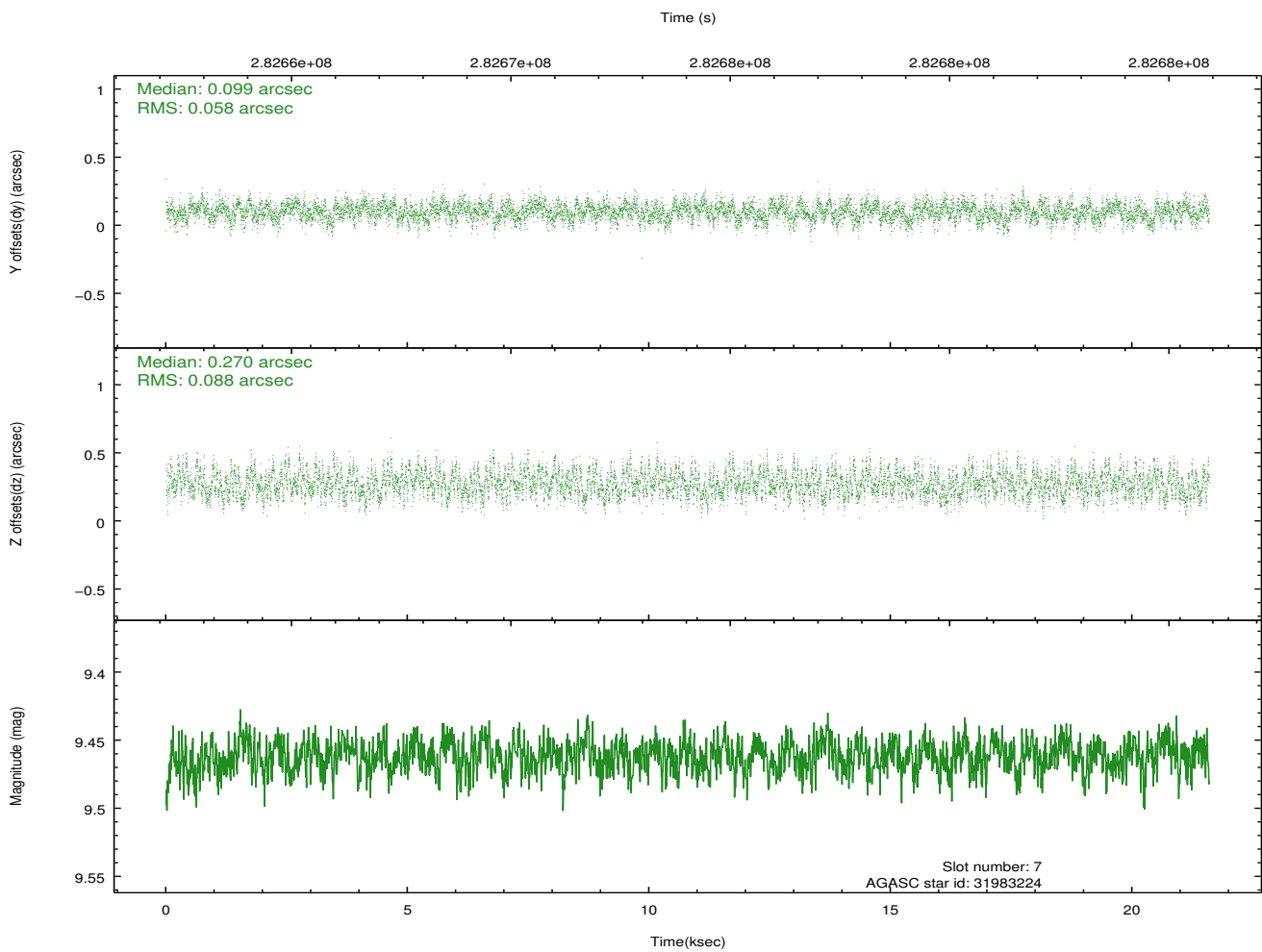
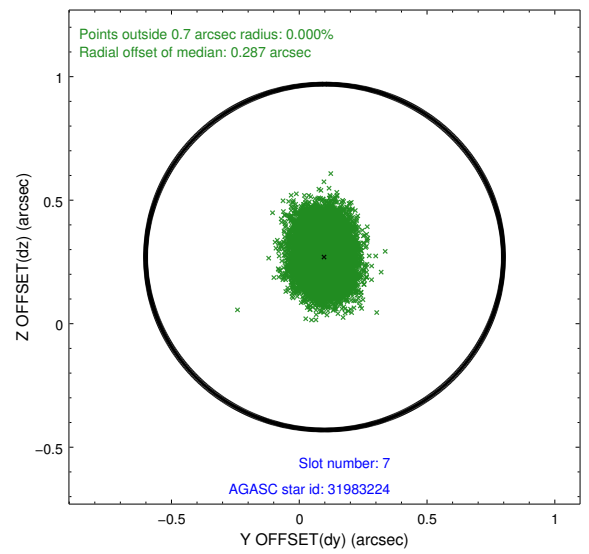
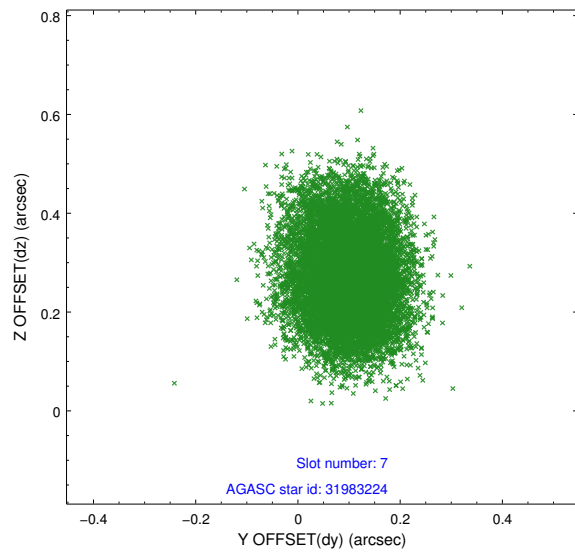
### 2.4.3 Slot 5



### 2.4.4 Slot 6

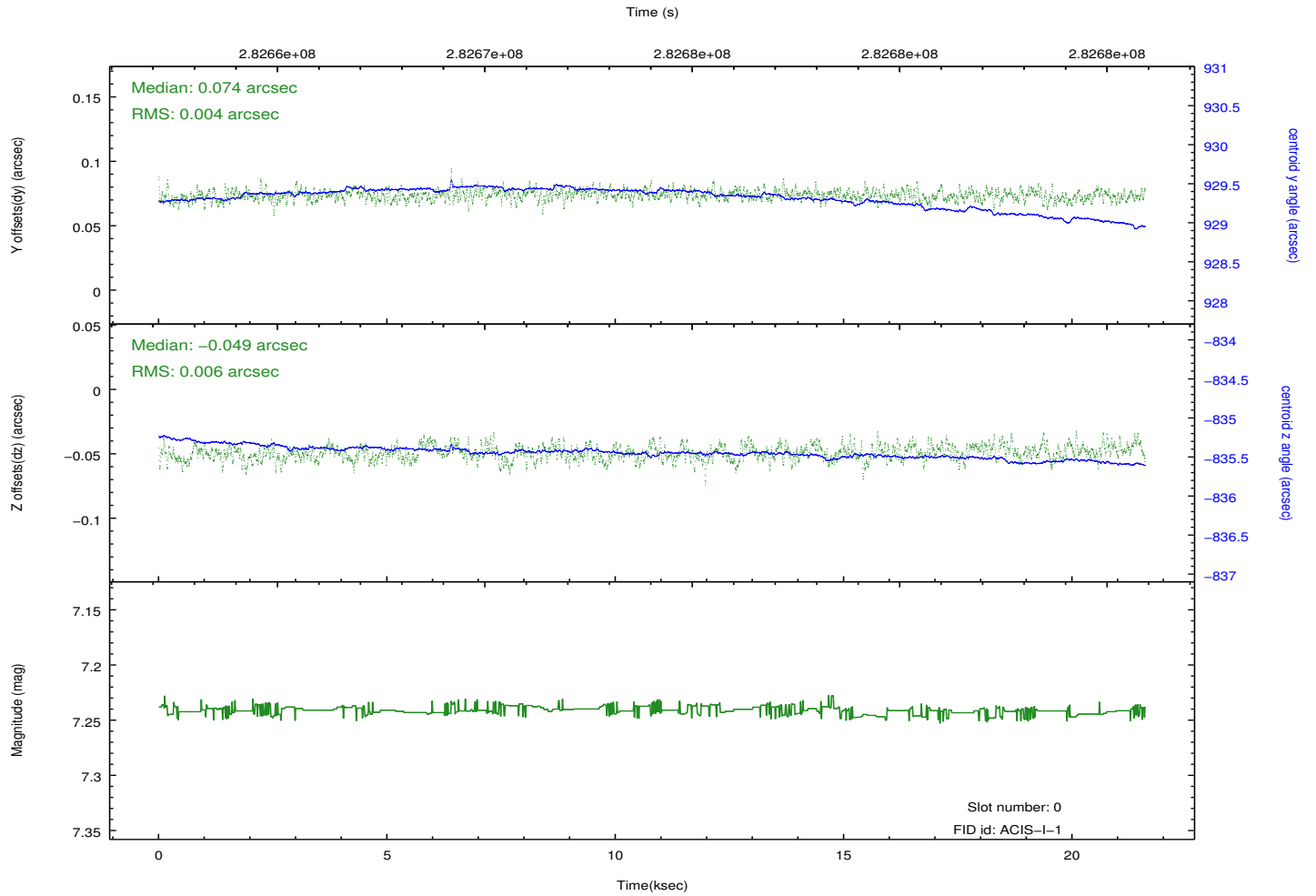
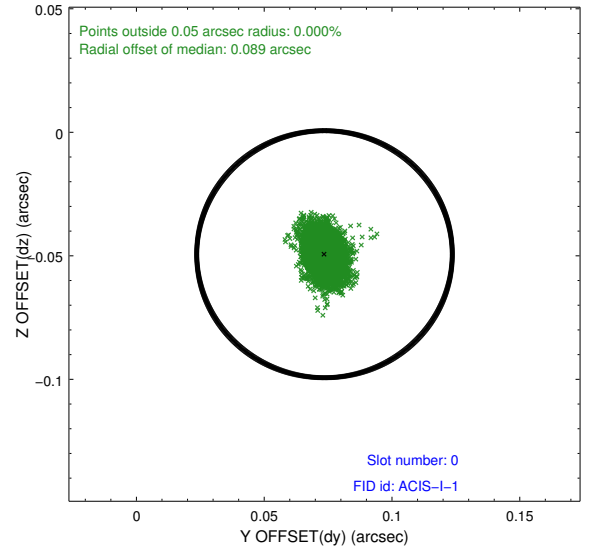
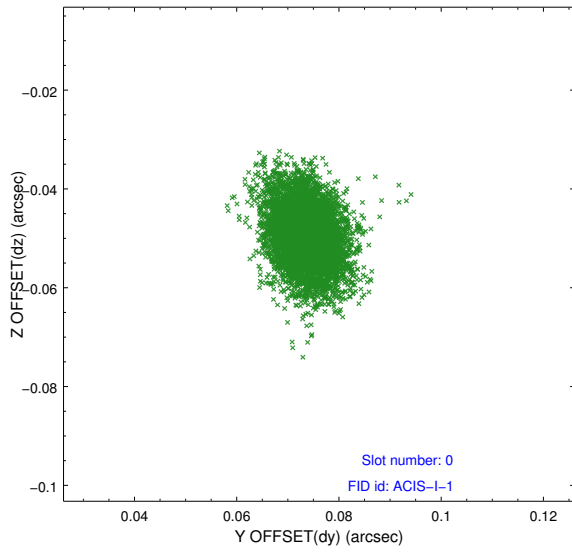


## 2.4.5 Slot 7

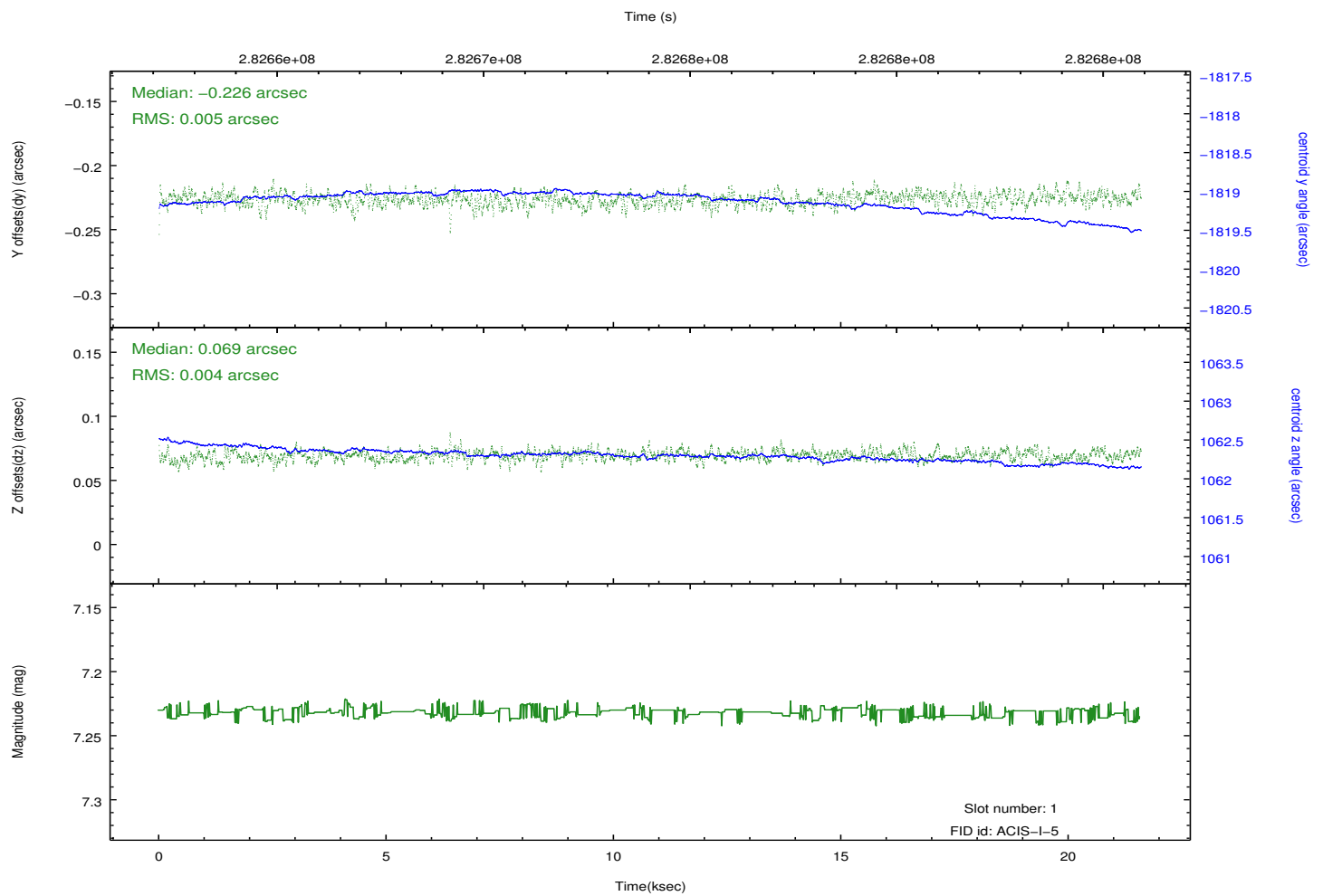
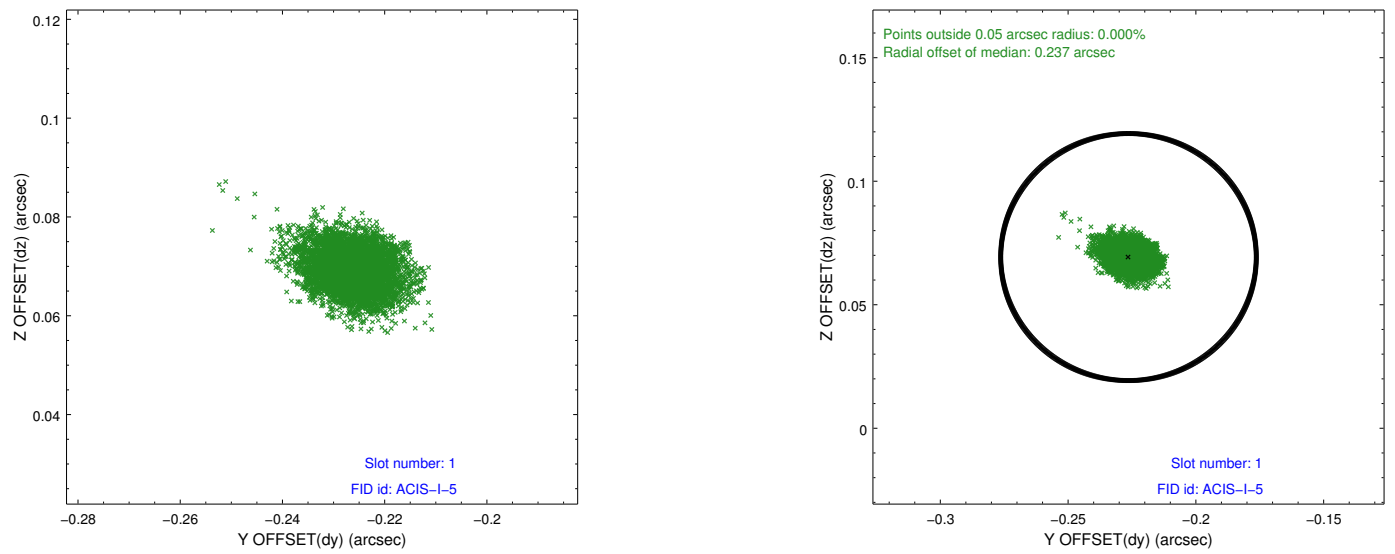


## 2.5 FID Slots

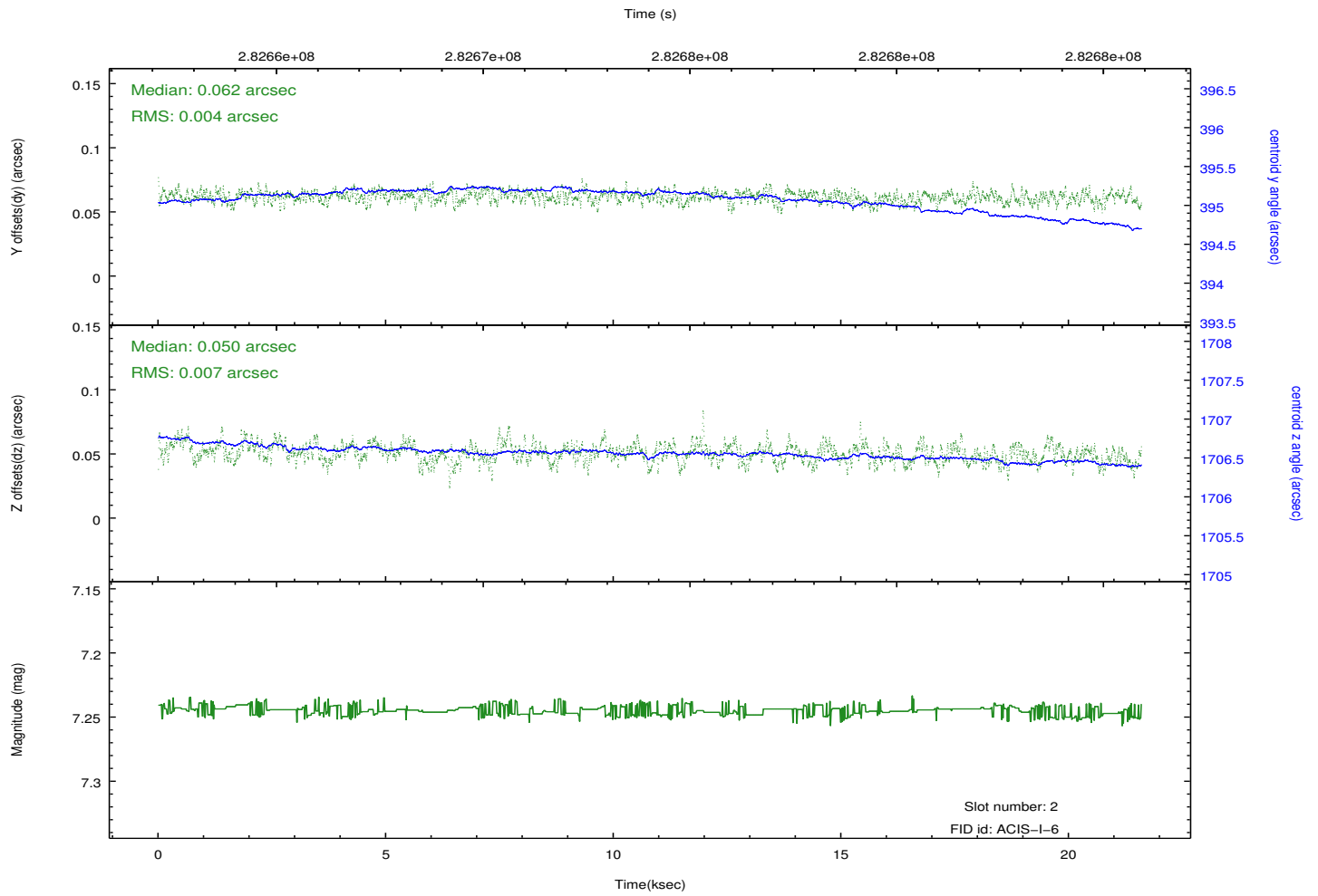
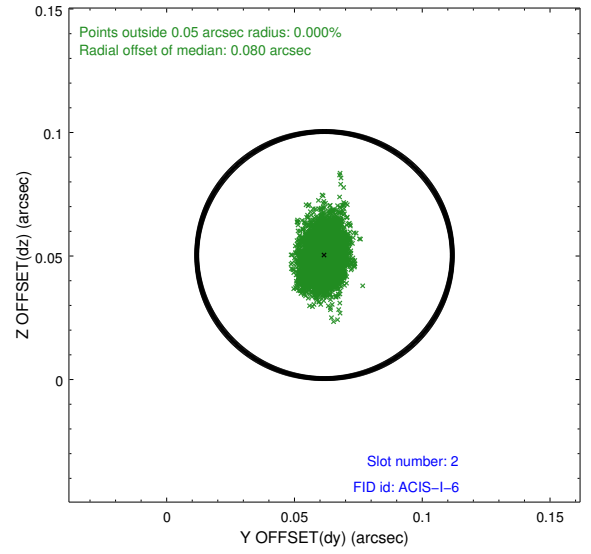
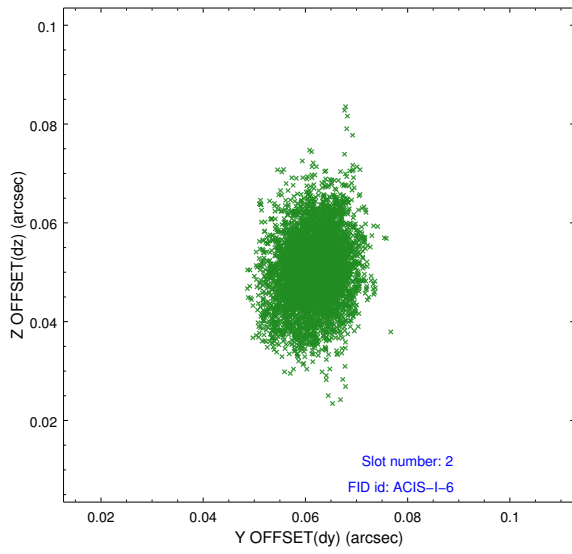
### 2.5.1 Slot 0



## 2.5.2 Slot 1



### 2.5.3 Slot 2



# A Summary

## A.1 Status

V&V Scientist	Beth Sundheim
V&V Date (YYYY-MM-DD)	2012.04.18
V&V Edition	1
V&V Disposition and Status	OK
V&V Charge Time	21.0335999

## A.2 Comments